



ALUMINIUM ACCESS RAMP FOR WHEELCHAIRS/SCOOTERS

ZT-665

USER MANUAL

FEATURES

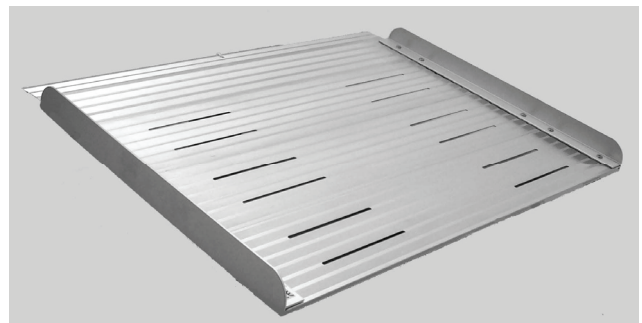
Ideal for Wheelchairs and Scooters.
Made of Aluminium
Supplied with fixing pin for step.

Length 61cm/24"

Width 56.5cm/30"

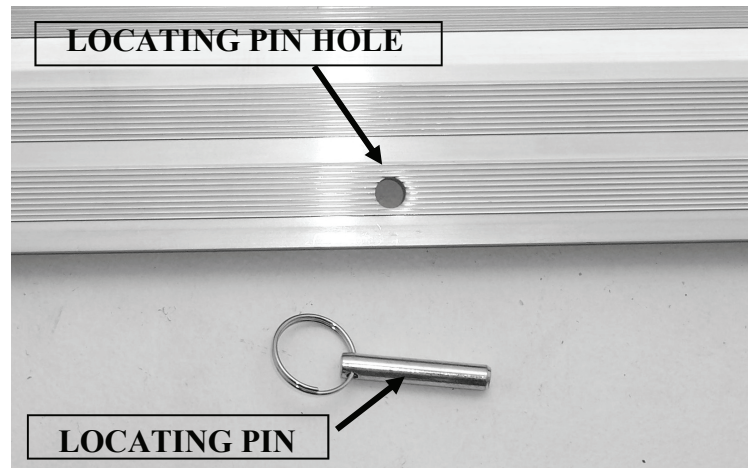
Lip 5cm/2"

Maximum User Weight 228kg/36 stone



ASSEMBLY

1. Unpack the ramp and remove all packaging.
2. Lay the ramp on the step and make sure that it sits flush on the top step and flush on the floor.
3. Drill a pilot hole in the top step through the pin locating hole and into the step.
4. Remove the ramp and re-drill the hole with a 7mm drill bit.
5. Refit the ramp and locate the locating pin through the locating hole in the ramp into the hole you have just drilled in the step.



MAINTENANCE

1. Brush with a soft hand brush, wipe with a damp Cloth.
2. Do not use any cleansers that may cause damage to the ramp.
3. Remove pin and clean the hole and pin on a regular basis so that the pin does not seize in the hole

Please ensure that this manual is read and understood before using the Wheelchair Ramp

Z-Tec Mobility, Unit 1B, Albion Works, Moor Street, Brierley Hill, West Midlands, DY5 3SZ

(April.07/1)