





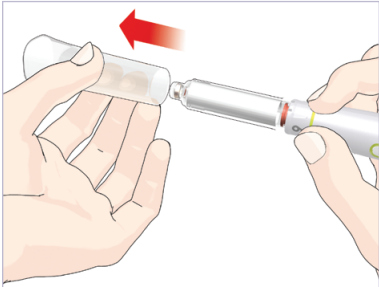
SECTION

3

Now that you have done the one-time-only New Cartridge Setup, follow Section 3 for all of your injections.

DAILY USE

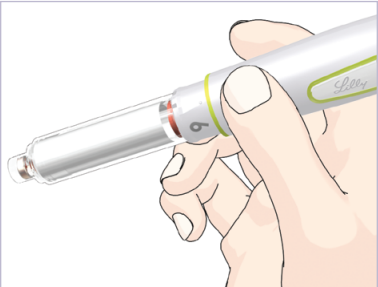
STEP 1 - CHECK THE PEN



Pull off the Pen Cap.

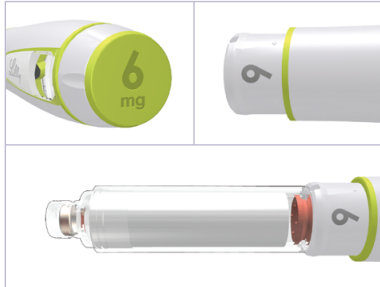
NOTE

**DO NOT USE** the Pen if any part of the Pen or Cartridge appears broken or damaged. Contact your healthcare professional.



Be sure to check the Cartridge:

- For 6 mg Cartridge Label
- For expiration date
- Contents should be clear and free of particles



Look at the Injection Button and the Front Housing to confirm it is a 6 mg Pen.



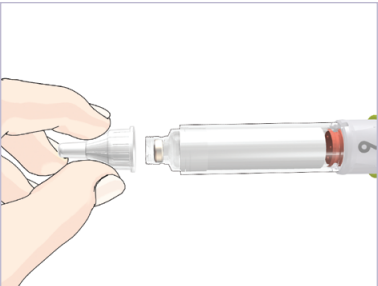
CHECK

Check that the number on the Front Housing matches the Cartridge strength on the Cartridge label. If the Pen and Cartridge do not match, contact your healthcare professional.

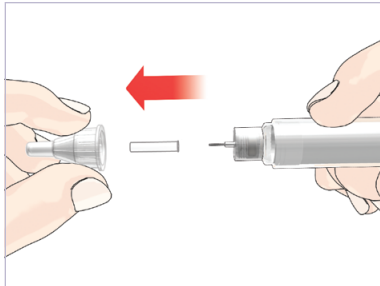
STEP 2 - ATTACH THE NEEDLE



- Remove the Paper Tab from the end of the Outer Cap.



Holding the Needle by the outer cap push the Needle **straight** onto the 6 mg Cartridge and screw on clockwise until secure



- Pull off the Outer Cap and the Inner Cap.
- Keep the Outer Cap to remove the Needle after the injection.

NOTE

Hidden Needle Cover is available separately from the HumatroPen 6 mg Kit. Refer to the Hidden Needle Cover user manual for instructions.

STEP 3 - DIAL AND INJECT THE DOSE

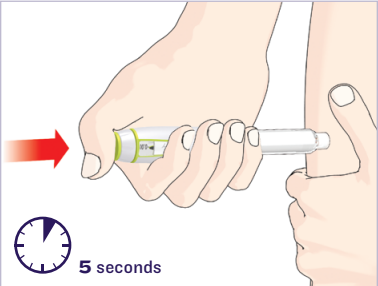


Turn the Dose Knob to desired dose.

EXAMPLE

0.25 mg shown in the drawing above.

If you dial past the desired dose, you can correct the dose by dialing backwards.

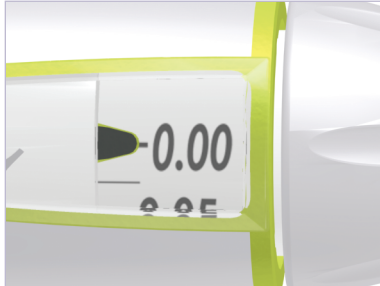


Insert the Needle as directed by your healthcare professional.

Place your thumb on the Injection Button, then slowly and firmly push the Injection Button until it stops moving.

Maintain pressure on the Injection Button for **five** seconds, then remove the Needle from the skin.

Check to make sure you see a **0.00** in the Dose Window to confirm you received the complete dose.



NOTE

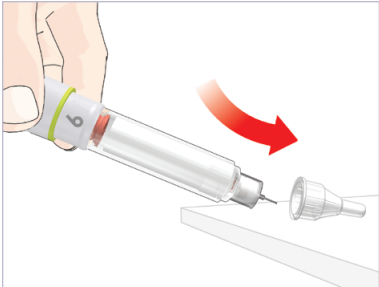
It is possible to set a dose larger than the amount of Humatrope left in the Cartridge.

At the end of the injection, the number in the Dose Window should be **0.00**. If it is not, this is the amount of Humatrope you **DID NOT** receive.

Consult with your healthcare professional on how to handle a partial dose. Remove the Needle and empty Cartridge.

For the next daily use attach a new Cartridge as shown in Section 2, Step A, and continue with New Cartridge Setup (Section 2).

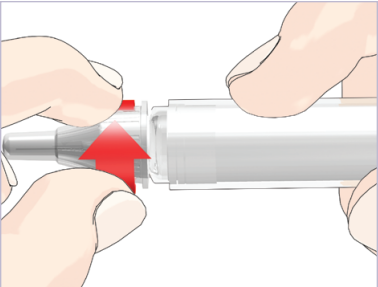
STEP 4 - REMOVE AND DISPOSE OF THE NEEDLE



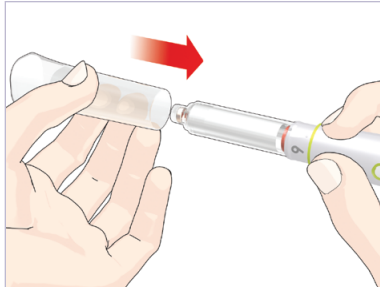
Carefully replace the Outer Cap as instructed by your healthcare professional.

NOTE

- **DO NOT STORE** the Pen with a Needle attached to prevent air from entering the Cartridge.
- **DO NOT REMOVE** this Cartridge from the Pen until the Cartridge is empty or needs to be replaced to avoid the possibility of an inaccurate dose.



While holding the cartridge in one hand unscrew the capped Needle by turning counter-clockwise. Discard the Needle as directed by your healthcare professional.



Replace the Pen Cap.

STEP 5 - STORE PEN AND CARTRIDGE FOR NEXT USE

Store the HumatroPen 6 mg properly. (See "Care and Storage for the HumatroPen 6 mg" in **Section I** of this user manual for more information.)

When it is time for your next routine dose, go to Section 3, and repeat Steps 1-5.

SECTION

4

COMMONLY ASKED QUESTIONS

1. Do I need to perform the New Cartridge Setup before every dose?

- No. The New Cartridge Setup is done only once for each Cartridge, just before a new Cartridge is used for the first time.
- The purpose of the setup is to make sure the HumatroPen 6 mg and 6 mg Cartridge are ready to use.
- If you repeat the New Cartridge Setup before each routine dose, you may run out of Humatrope early. The small amount of product used in the New Cartridge Setup will not affect the supply of Humatrope.

2. What should I do if the Cartridge Label and Pen do not match?

- **DO NOT USE** the Pen if the Cartridge strength on the Humatrope Cartridge label does not match the number on the Pen's Front Housing.
- Contact your healthcare professional for assistance or to obtain a replacement.

3. What should I do if the Humatrope is not clear after mixing?

- Be sure to gently invert the Pen up and down 10 times. **DO NOT SHAKE**. Then, let the Pen sit for at least three minutes. If the solution remains cloudy or has particles, gently invert the Pen up and down 10 more times. Let the Pen sit for five more minutes.
- If the solution remains cloudy or contains particles after reconstitution (mixing), **DO NOT USE**. Contact your healthcare professional for assistance or Lilly at **1-888-545-5972**.

4. Why are there air bubbles in the Cartridge?

- Air bubbles may remain in the Cartridge after reconstitution (mixing).
- If the Pen is stored with a Needle attached, air bubbles may form in the Cartridge. **DO NOT STORE** the Pen with a Needle attached.
- Perform the New Cartridge Setup to remove air bubbles from the Cartridge.
- Small air bubbles are normal. They will not harm you nor affect the dose.

5. Why doesn't the Screw move out when there is no Cartridge attached to the Pen?

- The Screw may not move out when you push the Injection Button unless there is a Cartridge in the Pen. This feature allows you to easily push the Screw into the Pen Body when replacing a Cartridge.
- Once a Cartridge is attached, the Screw will move out when the Injection Button is pushed.

6. What should I do if I can't attach the Cartridge to the Pen Body?

- Check that the Cartridge is not damaged or broken.
- Carefully line up the Cartridge with the Pen Body and screw together until secure. If the Cartridge and Pen cannot be screwed together contact your healthcare professional.

7. Why is it difficult to push the Injection Button when I try to inject the dose?

- The Needle may be clogged. Try attaching a new Needle.
- Pushing the Injection Button down quickly may make the Injection Button harder to push. Pushing the Injection Button more slowly may make it easier.
- Using a larger diameter Needle will make it easier to push the Injection Button during injection. Ask your healthcare professional which Needle is best for you.
- The Injection Button may become harder to push if the inside of your Pen gets dirty with Humatrope, food, drink or other materials.

8. Why doesn't the Dose Knob go to zero when I inject the dose?

- This can happen if the Humatrope Cartridge does not have enough Humatrope left in it for the full dose. It is possible to set a dose larger than the amount of Humatrope left in the Cartridge. At the end of the injection, the number in the Dose Window should be 0.00. If it is not, this is the amount of Humatrope you **DID NOT** receive. Consult with your healthcare professional on how to handle a partial dose. Remove the Needle and empty Cartridge. For the next daily use attach a new Cartridge as shown in Section 2, Step A, and continue with New Cartridge Setup (Section 2).

9. Why do I see Humatrope leaking from the Needle after I have finished the injection?

- It is normal for a single drop to remain on the tip of the Needle after the injection is complete. If you see more than one drop:
  - You may not have received your full dose. **DO NOT INJECT** another dose. Consult with your healthcare professional for assistance.
  - To prevent this, for your next dose, firmly push and hold the Injection Button in and slowly count to **five** before removing the needle from the skin (see Section 3, Step 3).

10. How can I tell when the injection is complete?

- The injection is complete when:
    - You have slowly counted to five while you are still holding the Injection Button in and before you remove the Needle from the skin.
- AND**
- **0.00** is in the center of the Dose Window.

11. What do I do if I dial past my prescribed dose?

- If you dial a dose higher than your prescribed dose, just dial the knob back to your prescribed dose without pushing in on the Injection Button.

Packaged by:  
Lilly Pharma Fertigung und Distribution  
GmbH & Co. KG  
35387 Giessen, Germany

Manufactured by Eli Lilly and Company  
Pharmaceutical Delivery Systems  
Lilly Corporate Center,  
Indianapolis, IN 46285, USA

Authorized Representative in the EU:  
Eli Lilly and Company Ltd.  
Erl Wood Manor, Windlesham, Surrey  
GU20 6PH, UK

For assistance or further information, write to:  
Eli Lilly Canada Inc.  
3650 Danforth Avenue  
Toronto, ON  
M1N 2E8

HumatroPen and the H Block designs are trademarks of Eli Lilly and Company.  
Humatrope is a registered trademark of Eli Lilly and Company.

The HumatroPen 6 mg is for use with Humatrope 6 mg Cartridges only.

© 2012 Eli Lilly and Company. All rights reserved.

User Manual Revision Date: 29 June 2012

PV 7971 CAP

CE  
0344