



# Agilent 1290 Infinity II Evaporative Light Scattering Detector

User Manual



**Agilent Technologies**

# Notices

© Agilent Technologies, Inc. 2014

No part of this manual may be reproduced in any form or by any means (including electronic storage and retrieval or translation into a foreign language) without prior agreement and written consent from Agilent Technologies, Inc. as governed by United States and international copyright laws.

## Manual Part Number

G7102-90000

## Edition

08/2014

Printed in Germany

Agilent Technologies  
Hewlett-Packard-Strasse 8  
76337 Waldbronn

## Warranty

**The material contained in this document is provided “as is,” and is subject to being changed, without notice, in future editions. Further, to the maximum extent permitted by applicable law, Agilent disclaims all warranties, either express or implied, with regard to this manual and any information contained herein, including but not limited to the implied warranties of merchantability and fitness for a particular purpose. Agilent shall not be liable for errors or for incidental or consequential damages in connection with the furnishing, use, or performance of this document or of any information contained herein. Should Agilent and the user have a separate written agreement with warranty terms covering the material in this document that conflict with these terms, the warranty terms in the separate agreement shall control.**

## Technology Licenses

The hardware and/or software described in this document are furnished under a license and may be used or copied only in accordance with the terms of such license.

## Restricted Rights Legend

If software is for use in the performance of a U.S. Government prime contract or subcontract, Software is delivered and licensed as “Commercial computer software” as defined in DFAR 252.227-7014 (June 1995), or as a “commercial item” as defined in FAR 2.101(a) or as “Restricted computer software” as defined in FAR 52.227-19 (June 1987) or any equivalent agency regulation or contract clause. Use, duplication or disclosure of Software is subject to Agilent Technologies’ standard commercial license terms, and non-DOD Departments and Agencies of the U.S. Government will

receive no greater than Restricted Rights as defined in FAR 52.227-19(c)(1-2) (June 1987). U.S. Government users will receive no greater than Limited Rights as defined in FAR 52.227-14 (June 1987) or DFAR 252.227-7015 (b)(2) (November 1995), as applicable in any technical data.

## Safety Notices

### CAUTION

A **CAUTION** notice denotes a hazard. It calls attention to an operating procedure, practice, or the like that, if not correctly performed or adhered to, could result in damage to the product or loss of important data. Do not proceed beyond a **CAUTION** notice until the indicated conditions are fully understood and met.

### WARNING

A **WARNING** notice denotes a hazard. It calls attention to an operating procedure, practice, or the like that, if not correctly performed or adhered to, could result in personal injury or death. Do not proceed beyond a **WARNING** notice until the indicated conditions are fully understood and met.

# In This Book

This manual contains information on:

- Agilent 1290 Infinity II ELSD (G7102A)

## **1 Introduction to the Detector**

This chapter gives an introduction to the module, instrument overview and internal connectors.

## **2 Site Requirements and Specifications**

This chapter provides information on environmental requirements, physical and performance specifications.

## **3 Installing the Module**

This chapter gives information about the installation of your ELSD.

## **4 LAN Configuration**

This chapter provides information on connecting the module to the control software.

## **5 Using the Module**

This chapter explains the operational parameters of the ELSD.

## **6 Optimizing Performance**

This chapter gives hints on how to optimize the performance or use additional devices.

## **7 Troubleshooting and Diagnostics**

This chapter gives an overview about the troubleshooting and diagnostic features.

### **8 Error Information**

This chapter describes the meaning of error messages, and provides information on probable causes and suggested actions on how to recover from error conditions.

### **9 Maintenance**

This chapter describes the maintenance of the ELSD.

### **10 Parts and Materials for Maintenance**

This chapter provides information on parts for maintenance.

### **11 Appendix**

This chapter provides addition information on safety, legal and web.

# Contents

<b>1</b>	<b>Introduction to the Detector</b>	<b>7</b>
	Introduction to the ELSD	8
	System Overview	9
<b>2</b>	<b>Site Requirements and Specifications</b>	<b>17</b>
	Pre-installation Requirements	18
	Site Requirements	19
	Physical Specifications	22
	Performance Specifications	23
<b>3</b>	<b>Installing the Module</b>	<b>25</b>
	Unpacking the Module	26
	Installing the Module	28
<b>4</b>	<b>LAN Configuration</b>	<b>33</b>
	What You Have to Do First	34
	TCP/IP Parameter Configuration	35
	PC and Agilent OpenLAB ChemStation and EZChrom Setup	43
<b>5</b>	<b>Using the Module</b>	<b>49</b>
	Before Using the Detector	50
	Instrument Controls	51
	Operational Parameters	55
	Controlling the ELSD During an Injection	59
	Controlling the ELSD within ChemStation or EZChrom	62
	General Considerations	63

<b>6</b>	<b>Optimizing Performance</b>	<b>67</b>
	Do's and Don'ts of ELS Detection	68
	Location of the Detector Module	69
	Pumping systems	70
	Mobile phase priming	71
<b>7</b>	<b>Troubleshooting and Diagnostics</b>	<b>73</b>
	Troubleshooting	74
	Troubleshooting an HPLC System	75
	General Problems	76
<b>8</b>	<b>Error Information</b>	<b>83</b>
	What Are Error Messages	84
	Module Specific Error Messages	85
<b>9</b>	<b>Maintenance</b>	<b>95</b>
	Introduction to Maintenance	96
	Cautions and Warnings	97
	Cleaning the Module	98
	Inspection of Cables	99
	Drying the Diffuser	100
	Cleaning the Nebuliser	101
	Cleaning Evaporator Tube	102
	Putting the Instrument into Storage	103
	Updating Detector Firmware	104
<b>10</b>	<b>Parts and Materials for Maintenance</b>	<b>109</b>
	Identifying Parts and Materials	110
<b>11</b>	<b>Appendix</b>	<b>111</b>
	General Safety Information	112
	Waste Electrical and Electronic Equipment Directive	115
	Radio Interference	116
	Agilent Technologies on Internet	117



# 1 Introduction to the Detector

Introduction to the ELSD	8
System Overview	9
Basic Principles of Operation	9
Operational Parameters	12
Overview of ELS Detector	13

This chapter gives an introduction to the module, instrument overview and internal connectors.



## Introduction to the ELSD

The Evaporative Light Scattering Detector is a unique and highly sensitive detector for semi- volatile and non- volatile solutes in a liquid stream. It is mainly used as a concentration detector for High Performance Liquid Chromatography (HPLC). The solvent stream containing the solute material is nebulized and carried by a gas flow through an evaporation chamber. The solvent is volatilized, leaving a mist of solute particles that scatter light to a photosensitive device. The signal is amplified and a voltage output provides the concentration of the solute particles passing through the light.

The Agilent 1290 Infinity II ELSD may be used alone, or as one of several detectors in a GPC or HPLC system. As the solvent or eluent is evaporated in the course of the analysis, the Agilent 1290 Infinity II ELSD must be the last in series if used in conjunction with other detectors. If the Agilent 1290 Infinity II ELSD is being used as the last detector in a series, care must be taken not to exceed the recommended backpressure in detector cells in other units.

This manual instructs the user in the installation and operation of the Agilent 1290 Infinity II ELSD for stand- alone use and control using Agilent OpenLAB (ChemStation and EZChrom editions) and Agilent ChemStation.



# System Overview

## Basic Principles of Operation

### Nebulization

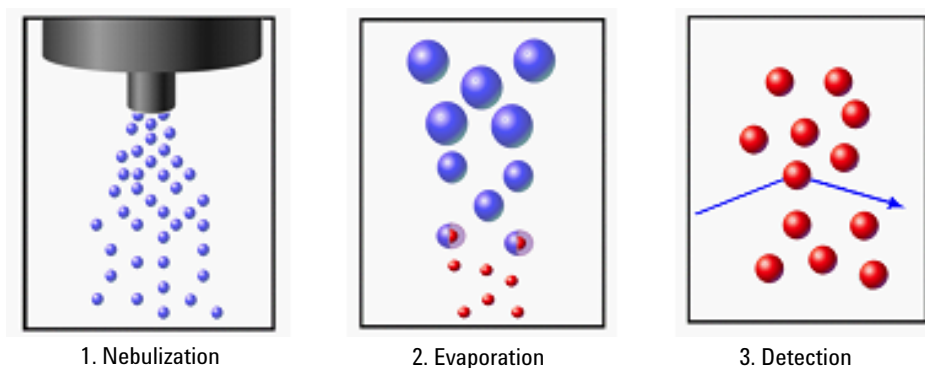
The eluent inlet is connected to the nebuliser via a short length of stainless steel capillary tube. The incoming eluent stream passes through the heated nebuliser and is mixed with the incoming nebuliser gas stream. The mixed gas and eluent stream form an aerosol plume containing a uniform dispersion of droplets that then passes as a continuous flow into the evaporator section. Any larger droplets or the inefficiently nebulized droplets collect in the nebuliser chamber waste trap and then drain off via the waste outlet into a collection bottle.

### Evaporation

After nebulization the atomized spray is propelled through the evaporation tube assisted by the carrier gas. In the evaporator section the solvent is removed leaving a stream of dry particles of the analyte. A diffuser located in the evaporator assists in the drying of the particles, acting as an efficient heat exchanger, prevents ballistic particles reaching the scattering chamber and randomizes the particle plume. The ELS Detector uses patented gas flow technology in the evaporation zone to aid evaporation at low temperatures. By adding a stream of dry nitrogen (evaporation gas) at the entrance of the evaporator tube less volatile solvents (for example, water) are easily evaporated. This evaporation gas is controlled by the user and facilitates sub-ambient operation.

## Detection

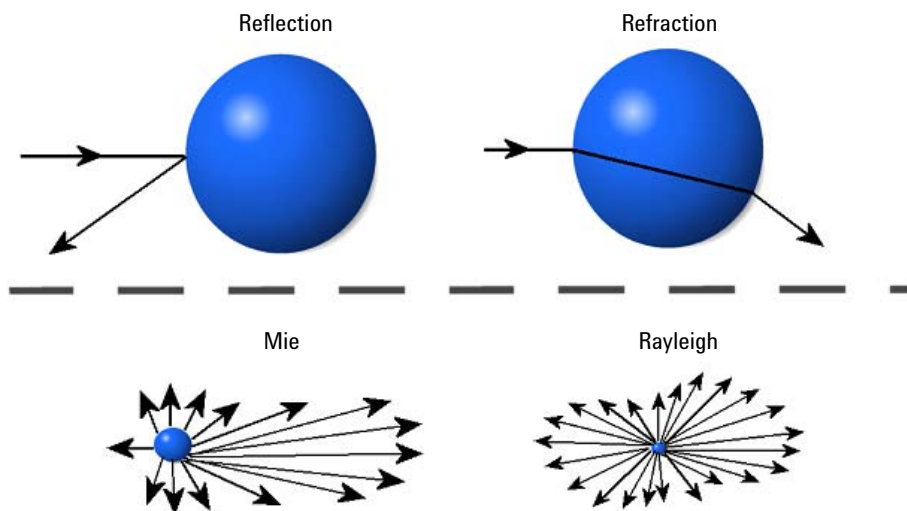
Light in the optical chamber is passed through the instrument at right angles to the direction of particle flow. A light trap is located opposite the source of light to capture the transmitted incident beam eliminating internal reflections within the instrument body. When pure solvent is being evaporated, only its vapor passes through the light path and the amount of light scattered to the photomultiplier is small and gives a constant baseline response. When a non-volatile solute is present a particle cloud passes through the light path, causing light to be scattered. This scattered light enters the optical aperture of the detection system and generates a signal response from the photodiode in real time. The quantity of light detected is dependent on the solute concentration and solute particle size distribution.



**Figure 1** Principles of Operation

## Theory

There are four main processes, by which the path of electromagnetic radiation or light can change direction, when passing through a medium containing a suspended particulate phase, see [Figure 2](#) on page 11.



**Figure 2** ELSD Scattering Mechanisms

The importance of each of these processes depends on the radius of the particle ( $r$ ) compared to the wavelength ( $\lambda$ ) of the incident light. Rayleigh scattering is predominant when  $r/\lambda$  is  $< 5 \cdot 10^{-2}$ . When particle dimensions are greater than  $\lambda/20$  they no longer behave as point sources, and Mie scattering becomes predominant. Once particle size approaches the wavelength of incident light then reflection and refraction begin to prevail.

The relative importance of refraction and reflection can be understood by examining the effects of the incident light on a single spherical particle whose equilateral axis lies in the same plane as the photodetector and light source. With this configuration, refraction is of greater significance than reflection. The majority of organic compounds have refractive indices between 1.3 and 1.5. Changes in the refractive index within this range will not greatly affect the quantity of light reaching the detector. This accounts for similarities in the sensitivity of the instrument to various compounds.

## Operational Parameters

The ELS Detector responds to all compounds that are less volatile than the mobile phase and is independent of a compound's optical properties. It therefore provides advantages over other spectroscopic detectors for detecting compounds that are deficient in a UV chromophore or fluorophore.

The removal of aqueous mobile phase within an ELSD is typically achieved by setting the evaporator temperature to the eluent's boiling point (for example 100 °C) in order to remove the solvent. For non-volatile compounds, operating at these high temperatures maximizes the signal response.

However, at these temperatures volatile and semi-volatile compounds are destroyed and are therefore not detected. This is problematic for small molecules, such as pharmaceuticals and drug candidates.

The ELS detector is specifically designed to evaporate difficult solvents at ambient and sub-temperatures in order to maximize detection of semi-volatile compounds.

The ELSD has patented technology that reduces the evaporation time of highly aqueous solvents at low temperature, and also prevents the evaporation tube becoming saturated, which would otherwise prevent further evaporation occurring.

Using this patented evaporation gas technology, a 20 µm droplet of water at 30 °C can be dried ca. 3x faster than just temperature alone. Using the Agilent 1290 Infinity II ELSD (G7102A), water can be evaporated as low as 20 °C, providing maximum sensitivity to thermally sensitive compounds. For maximum sensitivity of non-volatile compounds the evaporation gas can be turned off at higher evaporation temperatures.

Therefore, unlike other ELS detectors, where the evaporator temperature is set according to the type of mobile phase, the ELS detector evaporator temperature is independent of the mobile phase. Consequently, the ELS detector can be set at 30 °C for all types of mobile phase provided the evaporator gas flow is adjusted accordingly. This method of operation ensures that the ELSD sensitivity is maximized even for low molecular weight compounds.

To prevent against unnecessary gas usage, a controlled gas shut-off valve is integrated into the detector gas manifold. This will only allow gas to pass into the instrument when in RUN mode. Should the instrument default to STANDBY mode the gas will reduce to a default value of 1.2 SLM for 15 min before closing.

## Overview of ELS Detector

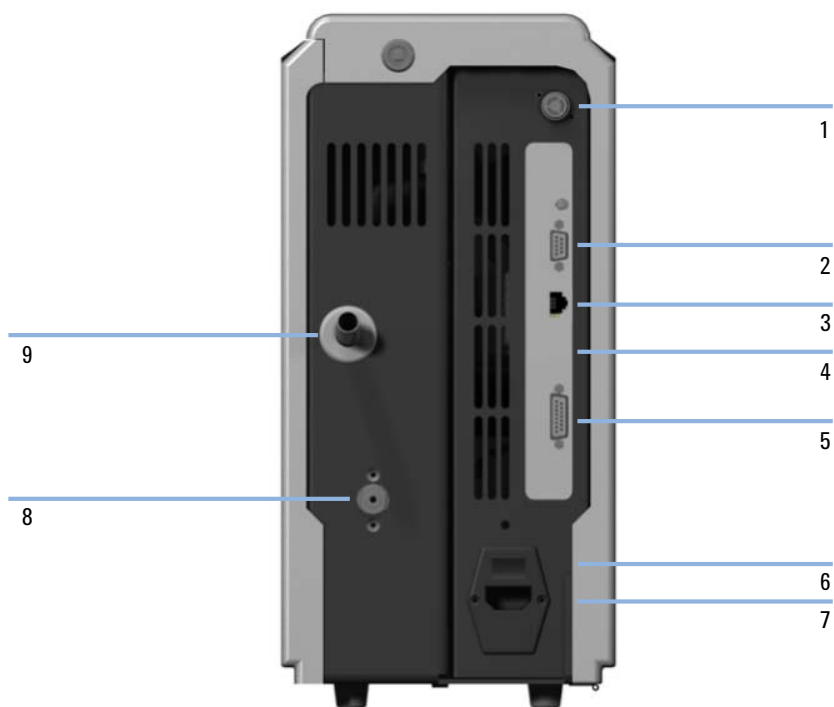


**Figure 3** ELSD overview (front)

1	Front screen display
2	Keypad
3	Eluent inlet
4	Solvent waste outlet

## 1 Introduction to the Detector

### System Overview



**Figure 4** ELSD overview (rear)

1	Vapor Sensor vent
2	Serial RS232 port
3	LAN connector
4	Firmware button
5	I/O connector (Remote Start input)
6	Mains Switch
7	Mains Input
8	Gas Inlet port
9	Exhaust port

**Table 1** ELS Detector I/O connections

	<b>I/O description</b>	<b>Pin number</b>
Inputs	Timetable Start	14 & ground
	Injection Sync	13 & ground
	Remote A/Z	7 & ground
Output	Pump stop contact closure – normally open	3 & 10
	Ground (to case)	1, 5, 6, 11

**NOTE**

In order to make appropriate remote start and A/Z connections from a third party LC, a third party remote start cable for Dimension software (Remote start cable (PL0890-0350)) can be purchased from Agilent Technologies.

# **1 Introduction to the Detector**

## **System Overview**





## 2 Site Requirements and Specifications

Pre-installation Requirements	18
Site Requirements	19
Physical Specifications	22
Performance Specifications	23
Specifications	23
Specification Conditions	24

This chapter provides information on environmental requirements, physical and performance specifications.



## **2 Site Requirements and Specifications**

### **Pre-installation Requirements**

# **Pre-installation Requirements**

For a detailed description of the environmental and operating requirements of the ELSD, please refer to the Site Preparation Checklist.

This manual will give you an overview of the ELS detector, and describe its operation in more detail.

## Site Requirements

A suitable environment is important to ensure optimal performance of the instrument, please refer to the Site Preparation Checklist for more details.

### Laser Safety

The Agilent 1290 Infinity II ELSD (G7102A) is classified as a "Laser Class 1" product (IEC825-1, CFR1040.10 & 1040.11). During normal operation of the ELSD no laser light is accessible to the user.

#### WARNING

##### Eye damage by laser light

**Hazardous laser light can injure eyes.**

- Do not remove covers and interlocks.
  - Observe and note the laser warning signs carefully.
- 

### Power Considerations

Check the operating voltage of your instrument on the IEC inlet fuse holder on rear of unit.

#### WARNING

##### Hazard of electrical shock or damage of your instrumentation

**can result, if the devices are connected to a line voltage higher than specified.**

- Connect your instrument to the specified line voltage only.
- 

#### CAUTION

Inaccessible power plug.

In case of emergency it must be possible to disconnect the instrument from the power line at any time.

- Make sure the power connector of the instrument can be easily reached and unplugged.
  - Provide sufficient space behind the power socket of the instrument to unplug the cable.
-

## Power Cords

Your detector is delivered with a power cord which matches the wall socket of your particular country or region. The plug on the power cord which connects to the rear of the instrument is identical for all types of power cord.

### **WARNING**

#### **Absence of ground connection or use of unspecified power cord**

**The absence of ground connection or the use of unspecified power cord can lead to electric shock or short circuit.**

- Never operate your instrumentation from a power outlet that has no ground connection.
  - Never use a power cord other than the Agilent Technologies power cord designed for your region.
- 

### **WARNING**

#### **Use of unsupplied cables**

**Using cables not supplied by Agilent Technologies can lead to damage of the electronic components or personal injury.**

- Never use cables other than the ones supplied by Agilent Technologies to ensure proper functionality and compliance with safety or EMC regulations.
- 

### **WARNING**

#### **Unintended use of supplied power cords**

**Using power cords for unintended purposes can lead to personal injury or damage of electronic equipment.**

- Never use the power cords that Agilent Technologies supplies with this instrument for any other equipment.
-

## Bench Space

The module dimensions and weight (see [Table 2](#) on page 22) allow you to place the module on almost any desk or laboratory bench. It needs an additional 25 cm (10 inches) of space on either side and approximately 15 cm (5.9 inches) in the rear for air circulation and electric connections.

If the bench shall carry a complete HPLC system, make sure that the bench is designed to bear the weight of all modules.

The module should be operated in a horizontal position.

## Physical Specifications

**Table 2** Physical Specifications

Type	Specification	Comments
Weight	11 kg (non-cooled), 13 kg (cooled)	
Dimensions (height × width × depth)	415 x 200 x 450 mm (16.3 x 7.9 x 17.7 inches)	
Line voltage	100 – 240 V~, ± 10 %	Wide-ranging capability
Line frequency	50 or 60 Hz, ± 5 %	
Power consumption	150 W (max)	Maximum
Ambient operating temperature	10–35 °C (50–95 °F)	
Ambient non-operating temperature	-40 – 70 °C (-40 – 158 °F)	
Humidity	< 80 % r.h. at 40 °C (104 °F)	Non-condensing
Operating altitude	Up to 2000 m (6562 ft)	
Non-operating altitude	Up to 4600 m (15091 ft)	For storing the module
Safety standards: IEC, CSA, UL	Installation category II, Pollution degree 2	For indoor use only.

# Performance Specifications

## Specifications

The instrument is suitable for indoor use only and is classified suitable under the following categories (EN 61010- 1):2010

- Installation category II
- Pollution degree 2
- Safety class 1

**Table 3** Performance Specification of the ELS Detector

Type	Specification
<b>Light Source</b>	
G7102A	LASER 405 nm, 10 mW (Class 3B)
Detector	Dual PMT with digital signal processing
Nebuliser	OFF, 25 – 90 °C
<b>Evaporator</b>	
Non-cooled	OFF, 25 – 120 °C
Cooled	OFF, 10 – 80 °C
Gas Flow Range	0.9 – 3.25 SLM (controlled gas shut-off)
Short Term Noise	<0.1 mV under specified condtns. See <a href="#">“Specification Conditions”</a> on page 24.
Drift	<1 mV/h under specified condtns. See <a href="#">“Specification Conditions”</a> on page 24.
Operating Pressure	60 – 100 psi (4.1 – 6.9 bar)
Eluent Flow range	0.2 – 5.0 mL/min
Digital Output	10, 40 or 80 Hz (24 bit)

**Table 3** Performance Specification of the ELS Detector

Type	Specification
Communication	Ethernet Serial (RS232) Remote Start Input Pump Stop: 1 Contact closure
PC control (software)	ELSD driver for OpenLAB ChemStation edition ELSD driver for OpenLAB EZChrom edition
Remote operation	Remote Start Input
Safety features	Gas shut-off Valve, Leak Detection, Laser Interlock

## Specification Conditions

ASTM: “Evaporative Light Scattering Detectors Used in Liquid Chromatography”.

**Table 4** Reference conditions

Gas flow	1.6 SLM
Neb temperature	40 °C
Evaporator temperature	40 °C
Data Rate	40 Hz
Smoothing	1

ASTM drift tests require a temperature change below 2 °C/h (3.6 °F/h) over one hour period. Our published drift specification is based on these conditions. Larger ambient temperature changes will result in larger drift. Better drift performance depends on better control of the temperature fluctuations. To realize the highest performance, minimize the frequency and the amplitude of the temperature changes to below 1 °C/h (1.8 °F/h). Turbulences around one minute or less can be ignored. ASTM measurements require that the detector should be turned on enough time before start of testing.





## **3** **Installing the Module**

Unpacking the Module	26
Delivery Checklist	27
Installing the Module	28
Connecting the Detector to your LC System	28
Checking Operation of the ELS Detector	31

This chapter gives information about the installation of your ELSD.



## Unpacking the Module

If the delivery packaging shows signs of external damage, please call your Agilent Technologies sales and service office immediately. Inform your service representative that the instrument may have been damaged during shipment.

### CAUTION

"Defective on arrival" problems

If there are signs of damage, please do not attempt to install the module. Inspection by Agilent is required to evaluate if the instrument is in good condition or damaged.

- Notify your Agilent sales and service office about the damage.
  - An Agilent service representative will inspect the instrument at your site and initiate appropriate actions.
-

## Delivery Checklist

Unpack the ELSD and accessories, and ensure that all parts and materials shown in the table below have been delivered with your module. Report any missing or damaged parts to your local Agilent Technologies sales and service office.

<b>p/n</b>	<b>Description</b>
G7102A	Agilent 1290 Infinity II Evaporative Light Scattering Detector
PL0890-0325	RS232 communication cable
8121-0008	LAN shielded cable
G4260-60005	1200 Series to ELSD Trigger Cable
G4260-63001	1200 Infinity II Trigger Cable
PL0890-0305	Gas inlet tube (2 m)
PL0890-0310	Rear exhaust hose (PVC-2 m)
G4261-63000	Solvent waste tube (1.9 m)
N/A	One power cord (region dependent)
G4260-60012	ELSD Software Drivers

## Installing the Module

### Connecting the Detector to your LC System

The ELS detector must be installed by an Agilent service representative. Your Agilent service representative will:

- Unpack the ELSD.
  - Remove all packing list items that are shipped with the instrument and present them to you for review.
  - Unpack the accessories supplied with the instrument and check that you have received everything on the packing lists.
  - Install your ELS detector.
- 1** Place the module on the bench in a vertical position.
  - 2** Connect the power cord to the IEC inlet at the rear of the unit.
  - 3** Ensure the power switch of the module is OFF (O is pressed in).
  - 4** Connect the power cable to the power connector.
  - 5** Attach the 4 mm OD gas tube into the gas inlet port at the rear of the instrument. The gas connection is a push-in fitting.
  - 6** Connect the solvent waste tube to the waste outlet at the front of the detector and position the other end into a waste collection bottle.
  - 7** Ensure that the bottom of the waste tube is below the height of the waste outlet from the instrument.

#### NOTE

Though it will not cause any damage, if the solvent waste tube becomes submerged below the solvent level inside the waste container positive pressure will be exerted on the nebuliser chamber leading to excessive baseline noise.

**WARNING**

**Risk of intoxication and contamination of detector**

**Toxic evaporation and accumulation of condensing solvent**

- The exhaust must be extracted to a suitable fume extraction system.
- Attach one end of the exhaust hose to the rear of the unit.
- Ensure the exhaust hose has an upward slope from the detector so that any condensed solvent is collected in the waste bottle at the front of the unit and to prevent it accumulating in the tubing.
- Make sure the other end of the exhaust hose is vented to a fume hood or other disposal unit.

**CAUTION**

Negative or positive backpressure at the exhaust

Baseline noise and reduced performance of the detector

- Do not connect the exhaust tubing directly to the extraction unit.

**8** Connect the exhaust hose between the exhaust outlet and a fume hood.

**9** For digital data collection and control connect the LAN cable to the LAN interface.

OR

Connect the RS232 serial cable.

**10** Connect the injection trigger cable to the Agilent autosampler.

**NOTE**

The ELS Detector is fitted with a LAN or standard RS232 3-wire serial interface.

Both connections provide a 24 bit 80 Hz (alternatively 40 or 10 Hz) digital output for connection to a PC running a data acquisition package (e.g. ChemStation software).

For further information on how to configure the PC with OpenLAB or ChemStation software (ChemStation Rev B not supported) refer to the appropriate user guide supplied with the driver install.

**NOTE**

For further information on how to configure the TCP/IP settings on the detector, see chapter *LAN Configuration*.

### 3 Installing the Module

#### Installing the Module

#### NOTE

For digital data collection using OpenLAB CDS, ChemStation or EZChrom, connect the ELS detector to the computer using the RS232 or LAN cable supplied with the detector. The 1200 Series to ELSD Trigger Cable (G4260-60005 ) is also required to start an injection, and should be used to connect to the 1200 instrument remote connector.

---

#### NOTE

The ELS Detector can be connected to auxiliary equipment, such as an autosampler, or pump via the 15pin remote start cable. The remote start cable can be configured in several ways to allow on-board timetable events to be triggered.

The ELS detector is equipped with 2 contact closures (normally-open) for stopping the operation of a pump if the unit reports an error condition. Pump stop facility must be employed if the instrument is to be left unattended, or if units are stacked.

The ELS Detector is also equipped with one contact closure, which is normally open, and two TTL logic inputs, both active-low (with internal pull-up resistors to 5 V).

For ELS-Detector I/O connections see [Table 1](#) on page 15.

---

**11** Install ELSD drivers version 1.3 or higher for full control via OpenLAB CDS ChemStation or EZChrom Edition.

**12** Connect the LC column outlet to the eluent inlet or at the detector output if a detector train is used at the front of the unit) using the shortest length of tubing possible (1/16 in OD, 0.010 in ID).

#### NOTE

The eluent from the chromatography system is connected to the central front port of the ELS Detector via a low dead volume Valco® bulkhead connector.

The liquid inlet port is connected directly to the nebuliser by a short length (130 mm) of capillary tube giving a delay volume from port to nebuliser tip of ~4 µL.

---

**13** Turn on the source gas to a pressure of about 4.1 – 6.9 bar.

## Checking Operation of the ELS Detector

- 1 Switch on the ELS Detector. If using OpenLAB CDS ChemStation or EZChrom, the front panel keypad will become locked when launching the software.
- 2 In OpenLAB CDS ChemStation or EZChrom, set operational parameters (i.e. nebuliser and evaporator temperature), and download them to the instrument. Then turn the ELS detector status to **On**.

**NOTE**

For control outside of OpenLAB CDS ChemStation or EZChrom, use the front panel to change the ELS detector settings. Initiate heating by selecting **RUN** mode using the arrow keys on the front keypad.

---

**NOTE**

When the unit has reached temperature, the baseline noise should be checked to ensure that it is < 0.2 mV peak-peak. This verifies that the gas supply is clean and dry.

---

- 3 If the baseline noise is within the limits, autozero the detector. However, if the baseline noise is outside the limits, refer to the Troubleshooting section for steps to rectify this.

**NOTE**

Baseline noise should not have increased significantly and should be  $\leq 0.5$  mV. Typically pure water should give no more than 0.4 mV peak-peak, whilst pure organic solvents should be less than 0.3 mV.

---

- 4 Turn on the eluent flow and allow the system to stabilize.
- 5 Again check the baseline noise.

Where noise and all other conditions are acceptable, the instrument is ready to begin work.

**NOTE**

Some volatile buffers can generate considerable offsets and increased noise levels.

---

### **3** **Installing the Module** Installing the Module





## 4 LAN Configuration

What You Have to Do First	34
TCP/IP Parameter Configuration	35
Configuration Using Instrument Front Panel	36
Configuration Using Web Browser	37
With Telnet	40
PC and Agilent OpenLAB ChemStation and EZChrom Setup	43
PC Setup for Local Configuration	43
Agilent ChemStation Setup	46

This chapter provides information on connecting the module to the control software.



## What You Have to Do First

The ELSD has an on-board LAN communication interface.

- 1** Note the MAC (Media Access Control) address for further reference. The MAC or hardware address of the LAN interface is a worldwide unique identifier. No other network device will have the same hardware address. The MAC address can be found at detector start up (see [“Configuration Using Instrument Front Panel”](#) on page 36).
- 2** Connect the instrument’s LAN interface to
  - the PC network card using a crossover network cable (point-to-point)  
or
  - a hub switch using a standard LAN cable.

## TCP/IP Parameter Configuration

To operate properly in a network environment, the LAN interface must be configured with valid TCP/IP network parameters. These parameters are:

- IP address
- Subnet Mask
- Default Gateway

The TCP/IP parameters can be configured by the following methods:

- by manually setting the parameters via the front panel of the detector,
- by manually setting the parameters through the G7102A ELSD web-interface,
- by manually setting the parameters through a Telnet session.

The module can be configured, via the front panel, to obtain an IP address automatically or to use a static IP address (see [Table 5](#) on page 35). When configured to obtain its IP address automatically, the module will request an IP address from the DHCP server after every power cycle.

**NOTE**

If the detector is assigned a temporary IP address (e.g DHCP server) then communication with the PC may be prevented following a power cycle of the instrument.

**Table 5** Default STATIC/IP parameters

IP address	192.168.254.27
Subnet Mask	255.255.255.0
Default Gateway	192.168.254.1

## Configuration Using Instrument Front Panel

Configuration of the TCP/IP parameters via the front panel is the recommended method for setting up the module's LAN interface. On-board configuration is only possible during the module's start-up procedure.

- 1 Power on the detector, and press any front key when the following message is displayed “**Press a key to enter communication setup**”.

### NOTE

If no key is pressed within 5 seconds, the ELSD will continue its start-up routine. The previously stored TCP/IP parameters will be used.

- 2 Select LAN using left/right arrow keys and press **AZ/Stop** to confirm.
- 3 Select either Static or DHCP (automatic) IP address assignment and press **AZ/Stop** to confirm.
- 4 If Dynamic IP address is selected, the instrument will try to obtain an IP address from the network.

When successful the detector will continue to the main menu screen.

- 5 If Static IP address is selected, the instrument will display the stored static TCP/IP settings.

### NOTE

The detector will use the default TCP/IP settings if no IP address has been programmed previously (see [Table 5](#) on page 35).

- 6 To enter a new IP address, use the up/down arrow keys.
- 7 To enter a new Subnet Mask use the up/down arrow keys.
- 8 To enter a new Gateway address use the up/down arrow keys.
- 9 When all values are populated press **AZ/Stop** to accept.

### NOTE

The instrument will return an INVALID network setting message if the IP address and Gateway combination are incompatible.

The instrument will continue to the main menu screen to confirm the settings have been implemented.

Once the LAN settings are configured they are stored in memory even after a power cycle.

**NOTE**

The MAC address and Host Names of the instrument are displayed on the LAN configuration screens for reference.

## Configuration Using Web Browser

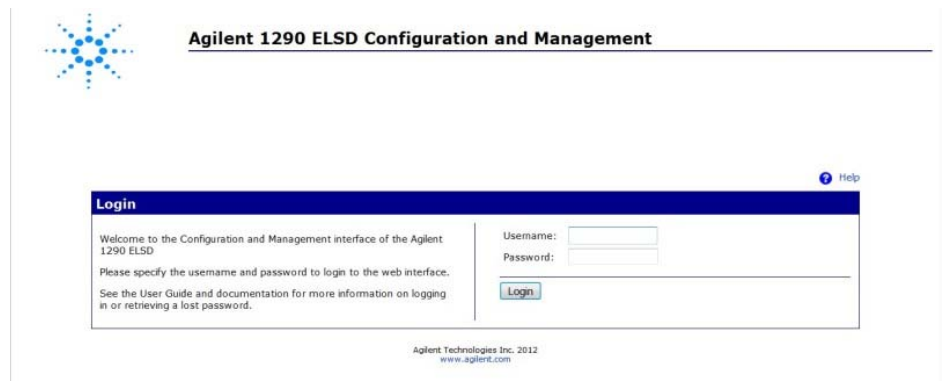
This procedure describes how to change the TCP/IP parameters and hostname using a PC, via a web browser.

- 1 Using a web browser such as Internet Explorer, type in the Host name or IP address of the ELSD into the address bar (for example <http://192.168.254.27>).

**NOTE**

The default host name is configured to the detector's serial number.

If communication is successful, the following login screen will appear:



## 4 LAN Configuration

### TCP/IP Parameter Configuration

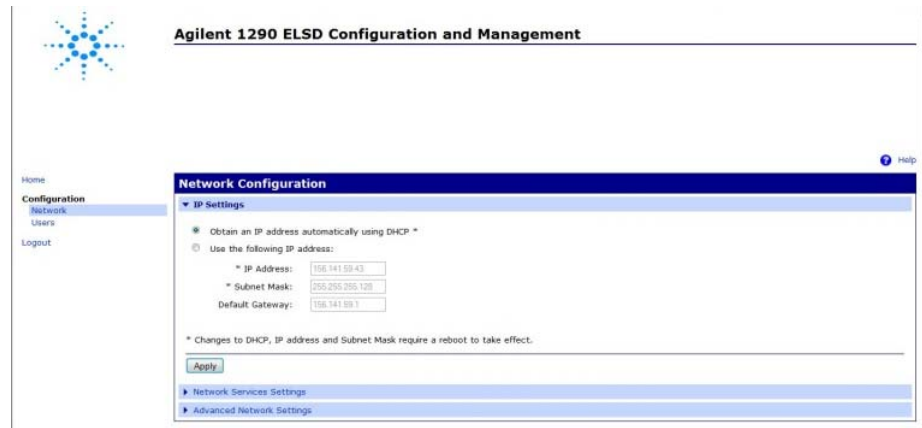
2 To login, type the following information:

- **Username:**  
**user**
- **Password:**  
**Agilent**

#### NOTE

The login details are case-sensitive.

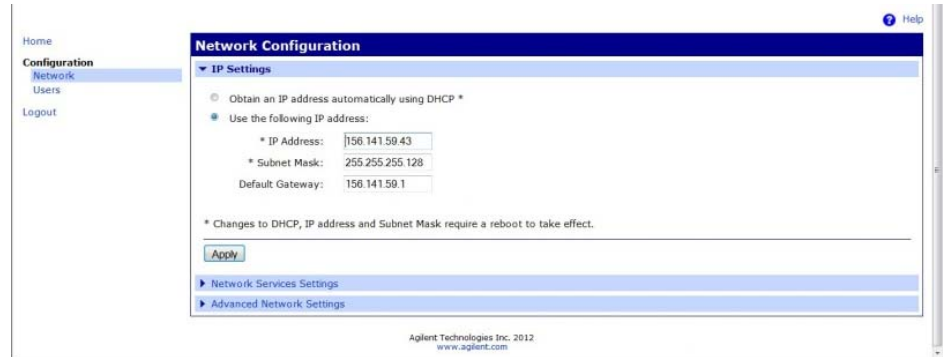
3 From the left-hand menu, select **Network** to configure the TCP/IP settings.



The detector can be configured to

- obtain an IP address automatically (DHCP),
  - use a static IP address,
  - change Hostname (Advanced Network settings).
- 4 To use a static IP address, select **Use the following IP address**.

- 5 Enter the module's **IP Address**, **Subnet Mask** and **Default Gateway** address and click **Apply**.



- 6 Select **Apply** again to confirm the changes.
- 7 Select **Logout** to close the session.
- 8 Restart the module for the new TCP/IP settings to be implemented.

**NOTE**

Contact your system administrator for assistance on configuring the detector's network settings.

**NOTE**

Changes to the TCP/IP parameters, other than those described, could render the ELSD inoperable.

## With Telnet

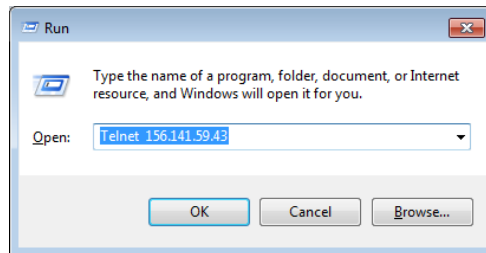
Whenever a TCP/IP connection to the module is possible (TCP/IP parameters set by any method), the parameters may be altered by opening a Telnet session.

- 1 Open the system (DOS) prompt window by clicking on Windows **Start** button and select **Run....**

OR

Press the Windows button and **R** simultaneously, and click **OK**.

- 2 Type the following into the **RUN** dialog:
  - **Telnet <IP Address>**
  - **Telnet <host name> \_** this can be set manually.



**Figure 5** Starting a Telnet session

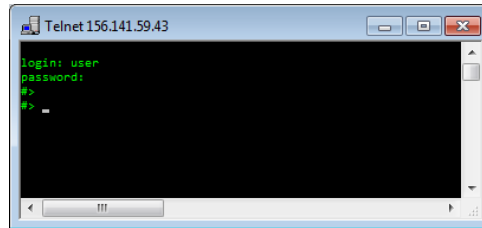
where <IP address> may be the assigned address via the instrument, a configuration session using the web interface of the default IP address (see [Table 5](#) on page 35).

### NOTE

If Telnet is not installed on your PC by default, you can turn on the feature via Windows Control Panel.



When the connection is established successfully, the module responds with the following:



**Figure 6** A connection to the module is made

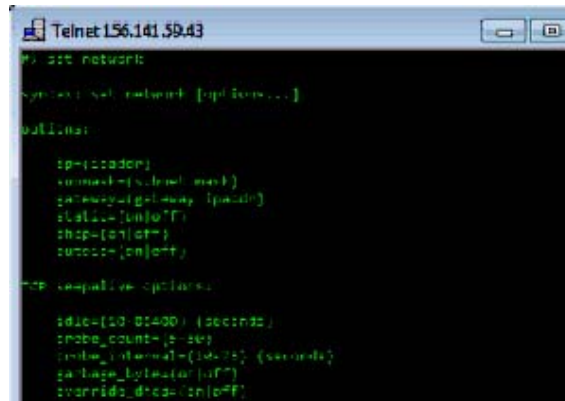
3 Enter the following information when prompted:

- **login:user**
- **Password:Agilent**

**NOTE**

The login details are case sensitive. The password will be not visible on screen.

4 At the #> prompt type **set network ?** to view the available commands.



## 4 LAN Configuration

### TCP/IP Parameter Configuration

**Table 6** Telnnet commands

Value	Description
set network ?	displays syntax and descriptions of commands
set network	displays the current settings and list of commands
set network ip=<x.x.x.x>	sets new ip address
set network submask=<x.x.x.x>	sets new subnetmask
set network gateway=<x.x.x.x>	sets new default gateway
set network static=on/off	sets the ip to not change
set network dhcp=on/off	sets the device to or to not get its id from a dhcp server
set network autoip=on/off	sets the device to or to not try to automatically get an ip
quit	closes telnnet and disconnects you

**5** To change a parameter follow the style:

Parameter value, for example:

```
set network static=on
```

```
set network ip=156.141.59.43
```

Then press **Enter**.

Parameter refers to the configuration parameter you are defining, and value refers to the definitions you are assigning to the parameter. Each entry is followed by a carriage return.

**6** When you have finished typing the configuration parameters, type **quit** and press **Enter** to exit.

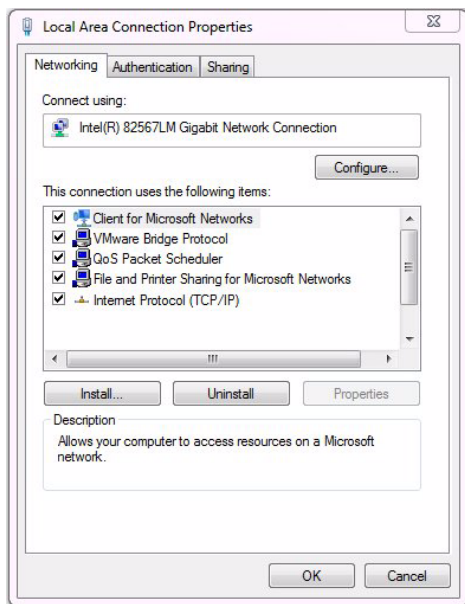
**7** Restart the module for the new TCP/IP settings to be implemented.

# PC and Agilent OpenLAB ChemStation and EZChrom Setup

## PC Setup for Local Configuration

This procedure describes how to change the TCP/IP settings on your PC to match the modules default parameters in a local configuration using a cross-over LAN cable (see [Table 5](#) on page 35).

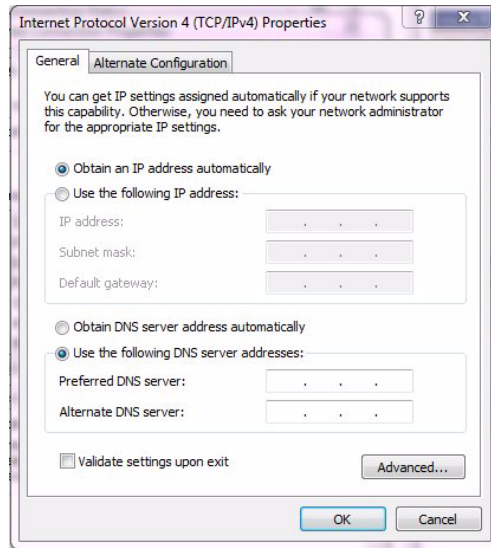
- 1 Open the **Local Area Connection Properties** and select **Internet Protocol (TCP/IP)**. Then click on **Properties**.



## 4 LAN Configuration

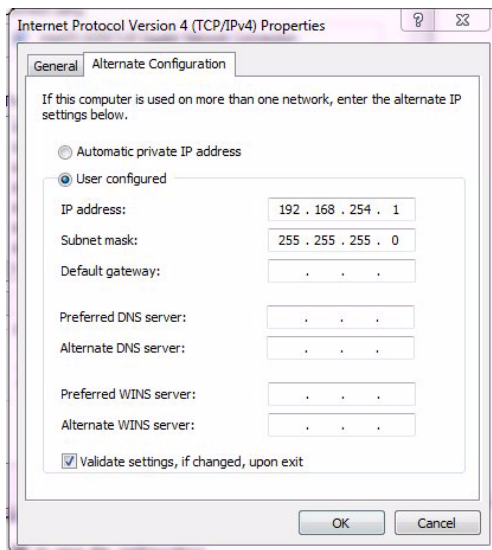
### PC and Agilent OpenLAB ChemStation and EZChrom Setup

#### 2 Select **Alternative Configuration**.



3 Enter the following IP and subnet mask address for the PC:

- **IP address:**  
192 . 168 . 254 . 1
- **Subnet mask:**  
255 . 255 . 255 . 0



4 Click **OK** to save the configuration.

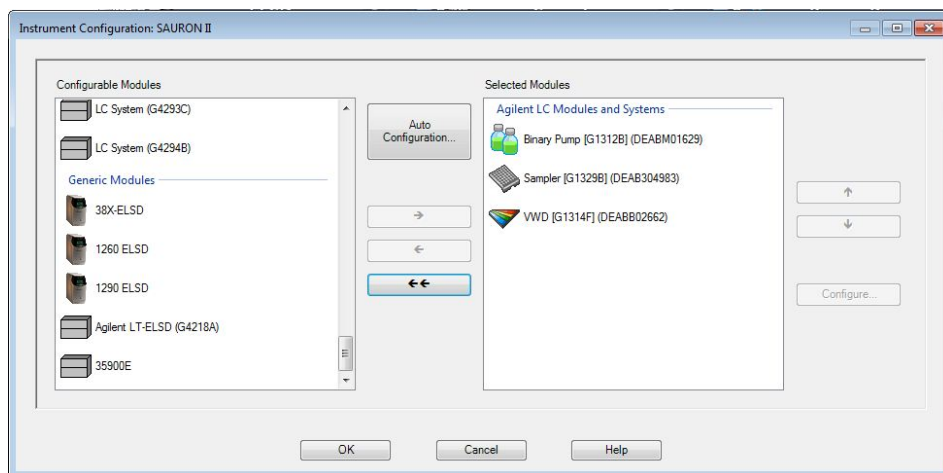
**NOTE**

It can take several seconds for the alternative network settings to take effect.

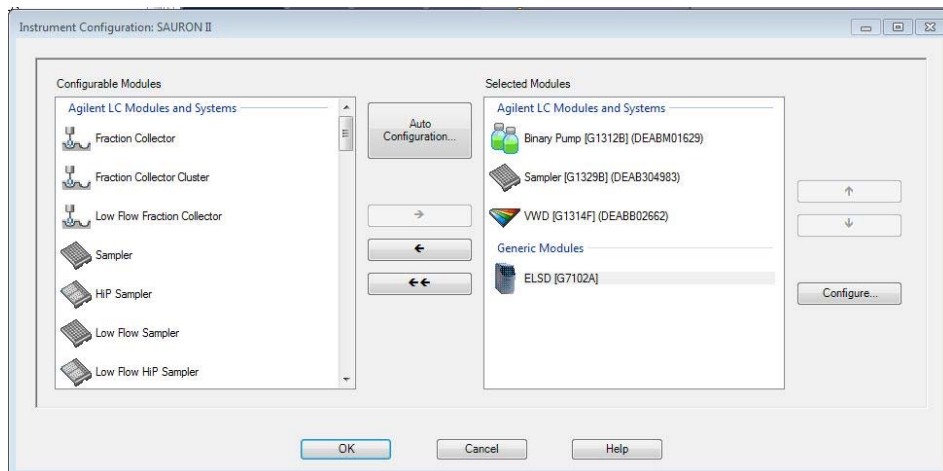
## Agilent ChemStation Setup

This procedure describes the Agilent OpenLAB ChemStation setup for the 1290 Infinity II ELSD detector (G7102A) using LAN as the communication method.

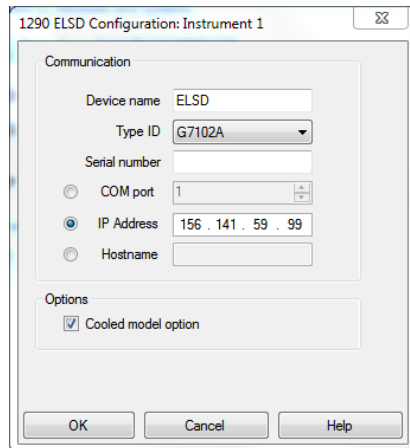
- 1 Open the **Instrument Configuration** window and select **1290 ELSD** from the **Configurable Modules** window.



- 2 Select **1290 ELSD** module and click **Configure...** to set the communication parameters.

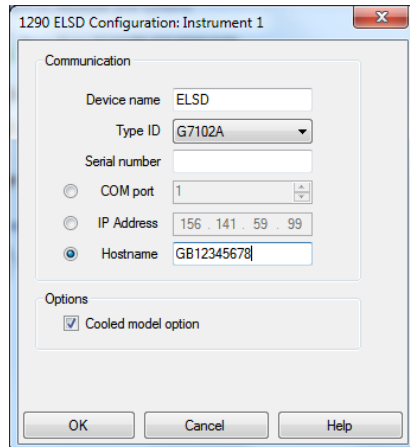


- 3 Select G7102A from the Type ID menu.

**4** Select **IP Address** and enter the module's IP address.

The screenshot shows the "1290 ELSD Configuration: Instrument 1" dialog box. Under the "Communication" section, the "IP Address" radio button is selected. The IP address field contains "156 . 141 . 59 . 99". The "Cooled model option" checkbox is checked under the "Options" section.

OR

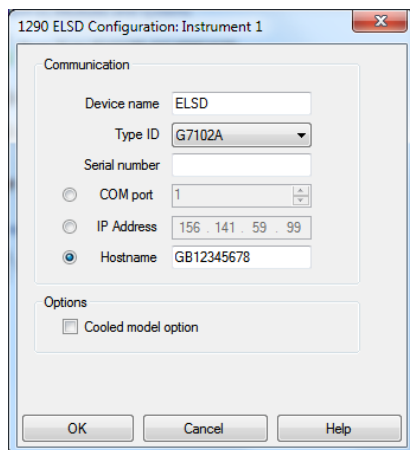
Select **Hostname** and enter the instrument's serial number.

The screenshot shows the "1290 ELSD Configuration: Instrument 1" dialog box. Under the "Communication" section, the "Hostname" radio button is selected. The hostname field contains "GB12345678". The "Cooled model option" checkbox is checked under the "Options" section.

## 4 LAN Configuration

### PC and Agilent OpenLAB ChemStation and EZChrom Setup

- 5 Cooled option is selected by default. Therefore, deselect **Cooled model option** if required.



- 6 Select **OK** to complete the configuration.

#### NOTE

The detector's serial number is the default hostname.

#### NOTE

If the detector is assigned a temporary IP address (e.g DHCP server), communication with the software might be prevented following a power cycle of the instrument.

Recommend using a static IP address to ensure communication with the software is preserved after power cycle.





## 5 Using the Module

Before Using the Detector	50
Instrument Controls	51
Display Screen	51
Keypad	51
Main menu bar	52
Sub-Menu Screen	52
Status Mode	53
Error conditions	54
Clearing an Error	54
Operational Parameters	55
Method	55
Evaporator Temperature	55
Nebuliser Temperature	56
Evaporator Gas Flow	56
Response Time (Smoothing)	57
Power Mode	57
Data Output Rate (Hz)	57
LAN (TCP/IP Settings)	58
Controlling the ELSD During an Injection	59
Real-time Operation	59
Creating a Real-time Program	59
Starting and Stopping Real-time Control	60
Controlling the ELSD within ChemStation or EZChrom	62
General Considerations	63
Solvent Recommendations	64
Sample Preparation	64
Column Considerations	64
Transferring ELSD Temperature Methods	66

This chapter explains the operational parameters of the ELSD.



## Before Using the Detector

On start-up of the Agilent 1290 Infinity II ELSD (G7102A), either Serial or LAN must be selected as the method of communication.

If Serial communication is selected, then no further configuration is required.

If LAN communication is selected, further configuration of the network settings is required (see chapter *LAN Configuration*).

## Instrument Controls

The ELS Detector can be used as a standalone detector via the front keypad and screen, as shown in [Figure 7](#) on page 51 or via PC control using software (e.g. OpenLAB CDS ChemStation).

### Display Screen

The graphical interface on the front of the instrument displays the current method, status, evaporator temperature, nebuliser temperature, gas flow and output of the instrument. Operating parameters can be altered via the interactive menu bar at the bottom of the display.



**Figure 7** ELSD display screen

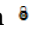
### Keypad

The four arrows on the front of the instrument are used to navigate within the interactive menu bar. The AZ/Stop key has a dual function; it can be used to auto zero the ELSD at any time, unless a timetable is running. If the AZ/Stop key is pressed during an active timetable, the timetable will stop running and the ELSD will revert to STANDBY mode.

## Main menu bar

To change the current settings, use the arrow keys to navigate across the interactive menu bar until the desired option is flashing. Using the up/down arrow keys alter the parameter to the desired setting.



When the cursor is located in the “Home” position, the actual detector values are displayed in the main screen. If the instrument is controlled via PC software, then the home key will display a locked icon  and the keypad will be disabled. To unlock the keypad, software control must be terminated.

## Sub-Menu Screen

The sub-menu screen is accessed from the front screen by selecting the ↓ key: This screen allows changes to the following electronic parameters:

<b>SMTH</b>	Set Time Constant
<b>PWR MODE</b>	Set Mode of ELSD when powered up
<b>HZ</b>	Set Data Output Rate
<b>LAN</b>	Displays the instruments TCP/IP settings With serial connection option displays “Instrument Configured for RS-232”



Figure 8 G7102A sub menu screen

## Status Mode

The ELS Detector can be operated in two modes; STANDBY or RUN, both of which are described over page:

To display the current mode and/or select a new mode, highlight the MODE function on the instrument display. The current mode will now be displayed on the screen. Using the arrow keys, scroll up or down until the desired option is displayed. The instrument acknowledges the command by displaying the mode of operation in the top right hand corner of the screen.

### Standby

The *STANDBY* mode is the “ground state” of the ELS detector, which is by default initiated automatically after power on (default can be changed using Power Mode, “Power Mode” on page 57). In *STANDBY* mode the heaters and light source are switched off, and the gas manifold valve is closed at power on. The *STANDBY* mode gives the user a control platform in which to set-up the operational parameters (gas flow, nebuliser and evaporator temperatures) before switching the unit into *RUN* mode. The instrument will default to *STANDBY* mode should an error occur on the instrument.

When the instrument is switched from *RUN* mode to *STANDBY* mode, following a command or error, then the gas management system is invoked and the gas flow set to a minimum flow of 1.2 SLM for 15 min before the gas manifold valve is closed. This minimum “blanket” gas is enough to nebulise and evacuate solvent should the instrument default to *STANDBY* mode with solvent still flowing.

#### CAUTION

Flooding the detector

If the instrument is left in Standby mode for longer than 15 minutes, gas flow to the unit is stopped to minimize gas usage.

→ The solvent pump must be turned off if the ELSD is going to be left in Standby mode longer than 15 minutes to prevent solvent flooding the detector.

## **RUN**

The RUN mode is the detector's operational mode. In this mode the instrument is controlled at the set temperatures and gas flow, and the system is fully operational. During heating or cooling the instrument will display NOT READY to show the system has not reached the set conditions. When the instrument has equilibrated READY will be displayed and the instrument is ready for use.

## **Error conditions**

The ELS Detector is equipped with a number of sensors and error checking facilities to ensure safe operation. If an error is detected the instrument gives an audible warning and a visible description of the error condition. In event of any error condition, the unit defaults into the STANDBY mode in which the heaters, light source and gas are turned off. A complete list of instrument errors and remedial actions are given in the troubleshooting section of this manual.

### **CAUTION**

Solvent flooding the detector

→ It is strongly recommended that the pump stop from the I/O connector of the ELSD is connected to the HPLC pump to prevent solvent flooding the detector should an error occur.

---

## **Clearing an Error**

Once the source of the problem has been corrected, select RUN mode to put the ELSD back into its operational state. If the problem has not been rectified the ELSD will repeatedly error when RUN mode is selected.

# Operational Parameters

## Method

The ELS Detector has 10 on board pre-set methods. These methods comprise, evaporator and nebuliser temperatures and gas flow, which can be optimized for specific applications.

These 10 on-board methods are selected using the front keypad and screen, via the METHOD option.

In addition to the 10 on-board pre-set methods, the ELS Detector has a method XXX that allows modification of the ELSD parameters to be made without the need for software control. Method XXX allows the detector to be used in standalone mode via the front screen and keypad.

### Loading a Method

To load one of the 10 on-board methods, highlight METHOD. Using the arrow keys scroll up or down to the required method number. The instrument will acknowledge the change by displaying the method number in the top left hand corner. These on-board methods cannot be edited.

## Evaporator Temperature

The evaporator temperature is the most important setting on the ELS detector. This should be set according to the volatility of the compound(s) being analyzed.

If the compound is non-volatile, e.g. sugars, then the evaporator temperature should be set to 80 – 90 °C.

If the compound is semi-volatile, or has a low molecular weight, e.g. pharmaceutical drug, then the evaporator temperature should be set between 20 – 30 °C.

The evaporator temperature ranges for the ELS models are as follows:

<b>G7102A ELSD with non-cooled option</b>	OFF, 25 – 120 °C (1 °C increments)
<b>G7102A ELSD with cooled option</b>	OFF, 10 – 80 °C (1 °C increments)

The default evaporator temperature for both models is 40 °C.

## Nebuliser Temperature

The nebuliser temperature can be used to optimize signal response in addition to evaporator temperature. Higher nebuliser temperatures increase peak response, but the nebuliser temperature must not exceed the boiling point of the mobile phase.

The nebuliser temperature range for both models is: OFF, 25 – 90 °C (1 °C increments).

The default value is 40 °C.

## Evaporator Gas Flow

The evaporator gas flow is used to control the ELS detector's evaporation process. The evaporator gas value is set according to the mobile phase composition, with higher gas flows (e.g. 1.6 SLM) being used for aqueous eluent compared to those containing organic solvents.

The higher the evaporator temperature the lower the evaporation gas setting required (e.g. 1.0 – 0.9 SLM), regardless of mobile phase composition. Likewise, as the evaporator temperature is reduced to ambient and sub-ambient temperatures, the gas flow needs to be increased to compensate (e.g. 1.6 – 1.8 SLM).

The evaporation gas range for both models is: 0.9 – 3.25 SLM (0.05 increments).

The default value is 1.6 SLM.



## Response Time (Smoothing)

The data outputted from the detector can be averaged to produce a smoother response. The smoothing width is set to the number of data points over which the data is averaged and can be regarded as a digital time constant. The smoothing range is settable from 1 – 50, (in increments of 1) which translates to 0.1 – 5.0 s.

For most HPLC applications the default value of 1 is satisfactory.

For GPC applications where peak widths can be >1 s, a value 5 s is recommended.

## Power Mode

The instrument can be configured from the front panel sub-menu (see “[Sub-Menu Screen](#)” on page 52), to start in either RUN or STANDBY mode when the unit is switched on via the rear power button.

To configure the Power Mode, select the required Status Mode (i.e. STANDBY or RUN) you wish the unit to start-up in from the sub menu screen (see “[Sub-Menu Screen](#)” on page 52). The selected option will take effect the next time the module is power cycled. If RUN mode is selected as the desired Power mode, then the instrument will use the operating parameters stored in memory. In the unlikely event that the instrument encounters a fault during power-up the unit will automatically switch to STANDBY mode.

## Data Output Rate (Hz)

The rate at which the ELS Detector outputs data can be selected from the sub-menu screen. A 10 Hz output rate is selectable for standard LC applications, a 40 Hz output rate can be chosen for faster LC separations and 80 Hz is used for UHPLC type applications with very narrow peaks. The data rate is stored in memory and is retained even after a power on/off cycle. The default value is 40 Hz.

**NOTE**

All ELSD conditions are retained on power cycling of the ELSD detector.

## LAN (TCP/IP Settings)

This screen displays the ELSD's current configured TCP/IP settings. See chapter *LAN Configuration* for details on how to set these values.

With serial connection screen option displays “Instrument Configured for RS-232”.

```
DHCP ENABLED
IP ADDR  123 . 456 . 78 . 90
SUBNET   255 . 255 . 255 . 90
GATEWAY  123 . 456 . 78 . 1
MAC      00:40:9D:54:14:26
HOST
NAME     GB12383112
```

Figure 9 TCP/IP settings

## Controlling the ELSD During an Injection

The ELS Detector has the capability to change operational parameters in real-time, during a sample injection, using an on-board timetable.

### Real-time Operation

The ELS Detector can store in memory a series of time-based events, within a single timetable. This timetable allows the operational settings of the ELSD to be changed in real-time during a run.

The evaporator temperature G7102A with cooled option, gas flow and smoothing parameters can all be configured within this timetable to change during a sample injection.

The timetable can be used to program the gas flow, in order to compensate for the change in ELSD response across a solvent gradient.

The single timetable, stored on-board the ELSD, is only customizable using the ELSD DIMENSION software, which can be purchased from Agilent (ELSD Dimension Software (PL0890-0375)). A trigger cable has to be ordered separately. Use Infinity II Trigger Cable for Dimension Software (G4260-63002) for an Infinity II system, and Remote start cable (PL0890-0350) for a third party system.

### Creating a Real-time Program

In order to create or modify the on-board timetable, DIMENSION software must be installed on your PC.

The DIMENSION software package allows you to create a timetable on a PC, which can subsequently be downloaded to the ELSD for later use.

The DIMENSION software also allows you to clear a time table from the ELSD detector memory.

## 5 Using the Module

### Controlling the ELSD During an Injection

The ELSD can only store a single timetable in memory, so the DIMENSION software can be used to create and save multiple timetables that can be downloaded individually at a later date.

For further information on how to use DIMENSION software, please refer to the DIMENSION software on-line help.

#### NOTE

Dimension software can only communicate with the ELSD using the Serial port. LAN communication is not supported in DIMENSION.

---

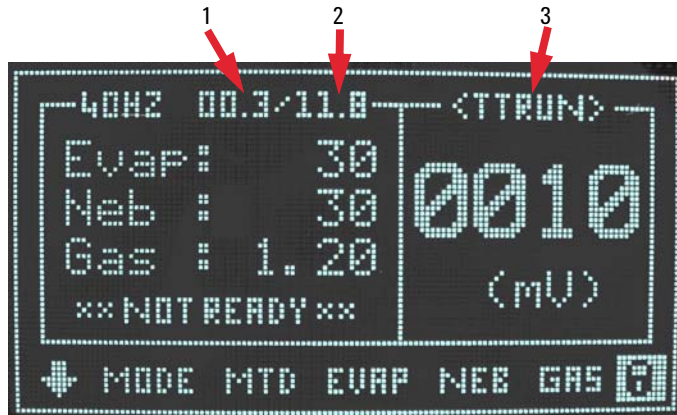
## Starting and Stopping Real-time Control

The ELSD contains an internal timer to initiate the time based events stored within the timetable. To start the internal timer and trigger the on-board timetable a contact closure input via the I/O connector on the rear of the instrument is required (see “[Overview of ELS Detector](#)” on page 13).

When the on-board timetable is triggered, the front panel of the ELSD will display TTRUN above the output, as shown in [Figure 10](#) on page 61.

When the timetable is running, the current and the total run time are displayed, in minutes, at the top-centre of the ELSD display. When the timetable reaches the end of its run time, the ELSD will revert to RUN mode and be primed ready to start the timetable again.

During an active timetable, where the evaporator temperature is being controlled, the status of the instrument will change from READY to NOT READY. This is normal behavior and will not affect the running of the timetable.



**Figure 10** ELSD front panel display during timetable operation

1	Current runtime
2	Total runtime
3	On-board Timetable is active

The **AZ/Stop** button on the instrument's front keypad can be used to interrupt the active timetable while it is running. When the **AZ/Stop** button is pressed the timetable is stopped with the instrument put into STANDBY mode.

## Controlling the ELSD within ChemStation or EZChrom

The ELS Detector can be controlled directly using OpenLAB CDS ChemStation and EZChrom editions (OpenLAB CDS ChemStation Rev B not supported). Digital data acquisition is performed without the need for an A/D interface. Controlling the ELSD using OpenLAB provides full detector functionality with the added benefit of remote automation. The ELSD Driver is supplied on the CD supplied with the detector.

For further information on how to install and configure the ELSD driver refer to the appropriate user guide supplied with the driver install.

## General Considerations

The ELS Detector should be thought of as a detector like any other designed for liquid chromatography. The main distinguishing feature is the ability to evaporate the solvent from the column eluent. Therefore, normal system set-up precautions should be remembered when starting to use the instrument. Any solvent that is intended for use with the ELSD should be fully miscible with any previously used in the liquid chromatograph. If there is any uncertainty, then a mutually miscible solvent should be run through the system as an intermediate liquid. The sample loop should also be flushed with miscible solvent where necessary. The intended eluent should be thoroughly degassed, should not contain non-volatile salts or material and should be fully compatible with the column(s). All connections should be made with zero dead volume fittings and tubing with an I.D.  $\leq 0.254$  mm ( $\leq 0.010$  in).

The ELSD requires nitrogen of purity  $>98$  %, at an inlet pressure of 4 – 6.7 bar. If in-house nitrogen is not available, we recommend the use of a nitrogen generator with a constant uninterrupted supply of high purity gas. Air can be used with non-flammable solvent systems. The eluent of choice should be fully volatile under the chosen detector parameters – any non-volatilized eluent will increase baseline noise and reduce sensitivity.

The ELS Detector is a destructive technique and must be placed last when used in series with other detectors, or used in conjunction with a flow splitter for semi-preparative applications, where partial sample collection is required.

## Solvent Recommendations

Any solvent that is intended for use with the ELS Detector should be thoroughly degassed, filtered (0.45  $\mu\text{m}$ ) and fully compatible with the column(s). Solvents that are not properly degassed may cause problems at nebulization leading to a poor reproducibility.

Non-volatile buffers are not compatible with the ELS Detector and should not be used. Only volatile mobile phase additives, such as those listed in [Table 7](#) on page 65 should be used with the ELS detector.

Tetrahydrofuran (THF) stabilized with BHT, may increase the baseline noise level. Where possible unstabilized THF should be used with the ELS detector.

Solvents with high boiling points such as N-methylpyrrolidone (NMP), Dimethylsulphoxide (DMSO), m-Cresol, and 1,2,4-Trichlorobenzene (TCB) are not recommended.

## Sample Preparation

Samples containing particulate matter should be filtered through a 0.45  $\mu\text{m}$  filter prior to injection.

## Column Considerations

The ELS detector will detect all non-volatile components in the mobile phase, which includes column-packing material. Column packing material will become chemically and mechanically broken down over the lifetime of the column, causing particles to enter the ELSD. This column “shedding” will lead to extremely high baseline.

Amino columns used with aqueous mobile phase are particularly prone to this type of shedding and should be checked regularly. To minimize column breakdown always follow the manufacturer's instruction supplied with the column.



**Table 7** Volatile mobile additives compatible with ELS detection

Mobile Phase Additive	pKa	pKb	pH Range	Bp (°C)	Mp (°C)
<b>Acids</b>					
Trifluoroacetic Acid (TFA)	0.3	13.70		72.4	-15.4
Formic Acid	3.75	10.25		100.7	8.3
Acetic Acid	4.75	9.25		116.0	16.6
<b>Bases</b>					
Ammonia	9.25	4.75		-33.4	-77.7
Methylamine	10.66	3.34		-6.6	-94.0
Ethylamine	10.81	3.19		16.6	-81.0
Triethylamine	11.01	2.99		89.3	-114.7
<b>Buffers</b>					
Ammonium Formate	3.8		3.0 – 5.0		120
	9.2		8.2 – 10.2		
Ammonium Acetate	4.8		3.8 – 5.8		111
	9.2		8.2 – 10.2		
Ammonium Bicarbonate	6.3		6.8 – 11.3		106
	9.2				
	10.3				
<b>Ion-Pair Reagent</b>					
Pentafluoropropionic acid (PFPA)	~0.6			97	
Heptafluorobutyric acid (HFBA)	~0.6			120	
Nonafluoropropionic acid (NFPA)	~0.6			140	
Tridecafluoroheptanoic acid	~0.6			175	

## Transferring ELSD Temperature Methods

The direct transfer of ELSD operating conditions from other manufacturers' ELS detectors, or other designs of ELSD (e.g. Agilent G4218A ELSD) to the ELSD will not provide equivalent performance.

As stated in “[Basic Principles of Operation](#)” on page 9, the operating temperatures of the ELS detector are set according to the type of analyte and not the mobile phase composition as with other ELS detectors. For example, when HPLC grade water is used as the mobile phase the Agilent G4218A ELSD requires an evaporation temperature between 35 – 40 °C, whereas the Agilent G7102A can be operated as low as 20 – 30 °C for the equivalent solvent.

Therefore the transfer of operating conditions from other models of ELSD to the G7102A ELSD is not valid and the only way to ensure that the detector will provide the optimum analyte signal-to-noise is to follow the guidelines outlined in “[Operational Parameters](#)” on page 12.



## 6 Optimizing Performance

Do's and Don'ts of ELS Detection 68

Location of the Detector Module 69

Pumping systems 70

Mobile phase priming 71

This chapter gives hints on how to optimize the performance or use additional devices.



## Do's and Don'ts of ELS Detection

### CAUTION

Decreased performance

High pressures on the internal chamber will lead to increased baseline noise and low sensitivity.

- NEVER block the exhaust outlet.
  - NEVER allow the solvent waste outlet tube to become immersed in the waste solvent.
  - When placing more than one HPLC detector in series, always place the ELS detector last.
  - Only use volatile mobile phase additives.
-

## Location of the Detector Module

Place the detector conveniently near your HPLC system. The modular design of the ELSD enables you to locate it anywhere within the limitations imposed by the length of the power cord, fluid lines and signal cables.

In order to keep liquid dead volume as low as possible and to minimize peak broadening in the lines, the distance between the column outlet and the flow cell inlet should be kept to a minimum.

Provide approximately four inches (10 cm) of space behind the unit so that the cooling fan intake is not impeded, and to allow easy access to the rear panel.

The ELS detector can be placed within 2 meters of an extraction unit, using the exhaust tube provided.

## **Pumping systems**

It is recommended to use a high-performance pumping system with no flow pulses to minimize nebulization problems. Inconsistent solvent flow will result in poor reproducibility.

A backpressure regulator maybe necessary on certain pumps in order to minimize pulsation. This can also be achieved by the column itself or a coil of 0.127 mm (0.005 in) ID tubing placed between the pump and the injector/injection valve.

## Mobile phase priming

The ELS detector does not require any mobile phase priming. It is recommended that priming of the LC system be performed without the ELS detector attached to prevent non-volatile impurities contaminating the ELS detector.

The mobile phase should be degassed and filtered, either by sparging with Helium or using an on-line degasser.

## **6 Optimizing Performance**

### **Mobile phase priming**





## 7 Troubleshooting and Diagnostics

Troubleshooting 74

Troubleshooting an HPLC System 75

General Problems 76

Baseline noise 76

Baseline spikes 77

Low sensitivity 77

Spiky peak tops but flat baseline 78

Large Baseline offset 78

Peak tailing 79

Instrument Fails to zero 79

No power 79

No response (completely flat baseline) 80

Temperature error as soon as instrument powered on 80

Display not on, but power connected 80

Cooled Evaporator Temperature reads zero at start-up and cannot be changed 81

Vapor sensor error occurs, but there is no solvent or vapor leak inside unit 81

Cooled Evaporator will not reach low temperature e.g. 10 °C 81

High back-pressure from detector 82

This chapter gives an overview about the troubleshooting and diagnostic features.



## Troubleshooting

If a problem is encountered Agilent Technologies advises that the troubleshooting section should be followed first to resolve the problem. If there is an error or fault and you follow the recommended course of action and the result is not satisfactory, then please direct the matter to Agilent Technologies or your local distributor.

Malfunctions within the ELS Detector can arise from three general sources:

- The ELS Detector itself can be dirty or operating outside specification.
- The HPLC system can have a broken, dirty, or non-optimally operating component, but the problem is manifesting itself in the ELS Detector.
- A mobile phase and/or column problem, which by its very nature is spread throughout the HPLC system but appears as a malfunction of the ELS Detector.

To troubleshoot the ELS Detector, you must be able to separate the performance of the ELS Detector within the HPLC system from its performance outside the HPLC system. This section begins with guidelines for testing the ELS Detector as a stand-alone. See [“Module Specific Error Messages”](#) on page 85 for possible causes and suggested solution(s).

## Troubleshooting an HPLC System

Standard practice is to add one component at a time back into the HPLC system so that the component causing the problem is easily identified if/when the condition reoccurs.

Begin troubleshooting by adding the pump to the ELS Detector first and finish by adding the column last. If another type of detector is available use it before the ELS Detector to aid in troubleshooting.

## General Problems

### Baseline noise

Probable cause	Suggested actions
1 Poor nebulisation	Increase the temperature of the nebulizer by 10 °C until the baseline noise decreases
2 Insufficient evaporation	<ul style="list-style-type: none"><li>• Increase the temperature of the evaporator by 10 °C until the baseline noise decreases</li><li>• Increase the evaporation gas flow rate</li><li>• Decrease the nebulisation temperature</li></ul>
3 Non-volatile additive in mobile phase	Use a volatile mobile phase
4 Pressure difference created inside nebuliser chamber	<ul style="list-style-type: none"><li>• Ensure that the end of the liquid waste tube is not immersed in liquid</li><li>• Ensure that the exhaust tube at rear of unit is not blocked, or extraction is too strong</li></ul>
5 Pump pulsations, especially in microbore applications where low flow rates are used	<ul style="list-style-type: none"><li>• Use a pulse free pump</li><li>• Increase the back pressure on the pump by fitting a back pressure column between the pump and the injection valve</li><li>• Use a pulse dampener directly after the pump in the system</li></ul>

## Baseline spikes

### Probable cause

- 1 Particulate matter in the gas supply
- 2 Column shedding
- 3 Poor nebulisation
- 4 Insufficient evaporation
- 5 Non-volatile additive in mobile phase

### Suggested actions

- Filter the incoming gas, or change the supply
- Replace column or fit an inline filter with a 0.2  $\mu\text{m}$  membrane filter directly after the column
- Check solvent flow rate into ELSD is constant
  - Check inlet gas flow is >60 psi and stable
- Increase the temperature of the evaporator by 10 °C until the baseline noise decreases
- Use a volatile mobile phase.

## Low sensitivity

### Probable cause

- 1 Partial blockage in Nebuliser or nebuliser inlet tube
- 2 Internal solvent trap is empty
- 3 Gas pressure too low
- 4 Laser power
- 5 Optical chamber is contaminated
- 6 Diffuser saturated with solvent

### Suggested actions

- Pump a 50/50 water/acetone mixture into ELSD at highest flow rate possible (do not exceed 5 mL/min) for 16 h
- Fill the front solvent trap with liquid until any excess flows out through front drain tube
- Ensure inlet gas pressure >60 psi
- Verify by switching the unit from S/By to RUN and check offset
- Clean contamination from windows in optical chamber
- Stop the eluent flow and increase the evaporator temperature to maximum. Increase the flow rate to 2.8 SLM and wait 1 h

## Spiky peak tops but flat baseline

### Probable cause

- 1 Inconsistent nebulization
- 2 Incorrect gas being used
- 3 Poor regulation of inlet gases
- 4 Insufficient smoothing
- 5 Sample precipitation during nebulization
- 6 Inconsistent pump flow rates

### Suggested actions

Nitrogen is the recommended gas - others can be used but may not nebulize as efficiently

Change gas to nitrogen or evaluate different nitrogen sources

- If using bottled gas, check that gas regulator is functioning correctly and giving consistent flow
- Alternatively, use a pulse dampener

The broader the peaks, the higher the smoothing value is required. Increase smoothing to 50 for Flash separations

- Reduce sample concentration or inject same loading in larger volume
- Check sample solubility in mobile phase eluents

See remedy for pump pulsation in the baseline noise section

## Large Baseline offset

### Probable cause

- 1 Inefficient evaporation
- 2 High concentration of non-volatile buffer or stabiliser
- 3 Contaminated diffuser
- 4 Optics Heater failed

### Suggested actions

Increase the evaporator temperature and/or gas flow

Use a lower concentration of stabiliser, unstabilised solvent or a more volatile buffer (ammonium acetate or ammonium formate)

Perform cleaning procedure

Refer to local distributor or Agilent Technologies

## Peak tailing

### Probable cause

- 1 Eluent particles lingering in the optical chamber
- 2 Poor chromatography

### Suggested actions

- Increase evap gas flow rate
- Optimize HPLC separation

## Instrument Fails to zero

### Probable cause

- 1 Offset too high or output unstable due to impurity in mobile phase

### Suggested actions

- Stop pump flow and switch off unit. Restart unit and A/Z without liquid flowing
- Refer to local distributor or Agilent Technologies
- Optical section contaminated and requires cleaning

## No power

### Probable cause

- 1 Mains lead not connected
- 2 Fuse failure
- 3 Power supply failure

### Suggested actions

- Attach mains lead to socket and inlet on rear of instrument
- Replace fuse
- Call Agilent Service representative

## No response (completely flat baseline)

Probable cause	Suggested actions
1 Data acquisition leads not connected	Ensure connectors to computer or integrator are securely connected
2 Light source inactive	Check LASER is functioning correctly, by stopping solvent flow, cycling the power. Then reading the offset value in RUN mode should be below 130 mV.
3 Output below 0 mV	Stop pump flow and A/Z without liquid flowing
4 Instrument in STANDBY mode	Select RUN mode
5 Nebuliser or nebuliser inlet tube blocked	Manually syringe water into ELSD front Inlet port to remove obstruction

## Temperature error as soon as instrument powered on

Probable cause	Suggested actions
1 Temperature probe fault or disconnected	<ul style="list-style-type: none"><li>• Check RTD connections</li><li>• Consult Agilent Technologies or your local agent for further advice</li></ul>

## Display not on, but power connected

Probable cause	Suggested actions
1 Instrument Power Supply	Refer to local distributor or Agilent Technologies.
2 Faulty display	Refer to local distributor or Agilent Technologies.



## Cooled Evaporator Temperature reads zero at start-up and cannot be changed

### Probable cause

- 1 Peltier cooler has not initiated correctly

### Suggested actions

- Switch detector off then on at the power socket
- Consult Agilent Technologies or your local agent if problem persists

## Vapor sensor error occurs, but there is no solvent or vapor leak inside unit

### Probable cause

- 1 Solvent vapor near the front of unit is being drawn into the unit
- 2 Faulty Vapor sensor

### Suggested actions

- Remove any solvent bottle or solvent leak that is directly in front of the detector
- Check the rear vapor sensor is not damaged/bent

## Cooled Evaporator will not reach low temperature e.g. 10 °C

### Probable cause

- 1 Ambient lab temperature too high
- 2 Faulty Peltier cooler unit

### Suggested actions

- Move detector to laboratory where ambient temperature is <25 °C
- Consult Agilent Technologies or your local agent if problem persists

## High back-pressure from detector

### Probable cause

- 1 Nebuliser or nebuliser inlet tube blocked

### Suggested actions

Manually syringe water into ELSD front Inlet port to remove obstruction



## 8 Error Information

What Are Error Messages	84
Module Specific Error Messages	85
Internal temperature exceeded lower limit	85
Internal temperature exceeded upper limit	85
On-board Vapor sensor failed	86
Rear Vapor sensor failed	86
Vapor detected	86
Leak detected	87
Fan Failed	87
Fan Stopped	88
Nebulizer temperature limit exceeded	88
Evaporator temperature limit exceeded	89
Evaporator gas flow rate limit exceeded	89
Invalid Nebulizer temperature	90
Invalid Evaporator temperature	90
Fan failed on cooled evaporator	91
Cooled evaporator current out of range or communication failed	91
Laser temperature out of range	92
Laser current out of range	92
Laser interlock open or failed	92
Communication to Laser failed	93
Leak Sensor failed	93

This chapter describes the meaning of error messages, and provides information on probable causes and suggested actions on how to recover from error conditions.



## What Are Error Messages

Error messages are displayed in the user interface when an electronic, mechanical, or hydraulic (flow path) failure occurs which requires attention before the analysis can be continued (for example, repair, or exchange of consumables is necessary). In the event of such a failure, the ELSD alarms with an error message displayed.

## Module Specific Error Messages

These errors are detector specific.

### Internal temperature exceeded lower limit

**Error ID: 10**

Air temperature inside the instrument is  $\leq 10$  °C

**Probable cause**

- 1 The environmental temperature is outside the specified operating limits of the instrument

**Suggested actions**

- Increase ambient temperature where detector is located
- Move the detector to a warmer location

### Internal temperature exceeded upper limit

**Error ID: 11**

Air temperature inside the instrument is  $> 40$  °C

**Probable cause**

- 1 The environmental temperature is outside the specified operating limits of the instrument

**Suggested actions**

- Decrease ambient temperature where detector is located
- Move the detector to a cooler location

## On-board Vapor sensor failed

**Error ID: 12**

The vapor sensor located on the main control board has failed.

**Probable cause**

- 1 Vapor sensor not connected to the main board
- 2 Defective vapor sensor

**Suggested actions**

- Please contact your Agilent service representative
- Please contact your Agilent service representative

## Rear Vapor sensor failed

**Error ID: 13**

The vapor sensor located on the rear panel of the module has failed.

**Probable cause**

- 1 Vapor sensor not connected to the main board
- 2 Defective vapor sensor

**Suggested actions**

- Please contact your Agilent service representative
- Please contact your Agilent service representative

## Vapor detected

**Error ID: 14**

**Probable cause**

- 1 External vapor being drawn into unit
- 2 Solvent leak inside unit
- 3 Exhaust tube not fitted

**Suggested actions**

- Remove any source of solvent vapors close to the module
- Please contact your Agilent service representative
- Fit black exhaust tube

## Leak detected

**Error ID: 15**

A leak was detected inside the module.

**Probable cause**

- 1 Loose nebuliser fittings
- 2 Blocked nebuliser causing leak at capillary fittings

**Suggested actions**

- Please contact your Agilent service representative
- Please contact your Agilent service representative

## Fan Failed

**Error ID: 16**

Thermal shut-down of the main cooling fan

**Probable cause**

- 1 Fan cable disconnected.
- 2 Defective fan.
- 3 Defective main board.

**Suggested actions**

- Please contact your Agilent service representative.
- Please contact your Agilent service representative.
- Please contact your Agilent service representative.

## Fan Stopped

**Error ID: 17**

A main cooling fan in the module has stopped

**Probable cause**

- 1 Obstruction of fan blades
- 2 Defective fan.
- 3 Defective main board.

**Suggested actions**

- Please contact your Agilent service representative
- Please contact your Agilent service representative.
- Please contact your Agilent service representative.

## Nebulizer temperature limit exceeded

**Error ID: 18**

Nebuliser temperature exceeded threshold after stabilizing

**Probable cause**

- 1 Defective thermocouple
- 2 Defective nebuliser heater
- 3 Defective main board.

**Suggested actions**

- Please contact your Agilent service representative
- Please contact your Agilent service representative
- Please contact your Agilent service representative.



## Evaporator temperature limit exceeded

**Error ID: 19**

Evaporator temperature exceeded threshold after stabilizing

<b>Probable cause</b>	<b>Suggested actions</b>
<b>1</b> Defective thermocouple	Please contact your Agilent service representative
<b>2</b> Defective evaporator heater assembly	Please contact your Agilent service representative
<b>3</b> Defective main board.	Please contact your Agilent service representative.

## Evaporator gas flow rate limit exceeded

**Error ID: 21**

Evaporator gas flow rate exceeded threshold after stabilizing

<b>Probable cause</b>	<b>Suggested actions</b>
<b>1</b> Insufficient gas inlet pressure	Ensure the gas inlet pressure is above 60 psi
<b>2</b> Defective mass flow controller	Please contact your Agilent service representative
<b>3</b> Gas line not connected or Mass disconnected	Check flow controller cable

## Invalid Nebulizer temperature

**Error ID: 22**

Invalid nebulizer temperature reading

**Probable cause**

- 1 Nebulizer heater not connected to the main board
- 2 Defective nebuliser heater

**Suggested actions**

- Please contact your Agilent service representative
- Please contact your Agilent service representative

## Invalid Evaporator temperature

**Error ID: 23**

Invalid evaporator temperature reading

**Probable cause**

- 1 Evaporator heater not connected to the main board
- 2 Defective evaporator heater
- 3 RTD Block to TEC board for cooled ELSD not connected to the main board

**Suggested actions**

- Please contact your Agilent service representative
- Please contact your Agilent service representative
- Ensure the evaporator heater is connected correctly

## Fan failed on cooled evaporator

**Error ID: 24**

Fans on cooled evaporator module have failed

**Probable cause**

- 1 Fan not connected to Peltier assembly
  
- 2 Defective Peltier fan

**Suggested actions**

- Ensure the fan is connected correctly
- Please contact your Agilent service representative
  
- Exchange Peltier assembly
- Please contact your Agilent service representative

## Cooled evaporator current out of range or communication failed

**Error ID: 25**

Peltier module current outside of normal range or communication to Peltier module has failed.

**Probable cause**

- 1 Defective Peltier assembly
  
- 2 Peltier assembly not connected to main board
  
- 3 Defective main board.

**Suggested actions**

- Exchange Peltier assembly
  - Please contact your Agilent service representative
  
  - Exchange Peltier assembly
  - Please contact your Agilent service representative
- Please contact your Agilent service representative.

## Laser temperature out of range

**Error ID: 26**

Temperature control on Laser assembly outside of normal operating range.

**Probable cause**

- 1 Defective Laser assembly

**Suggested actions**

Please contact your Agilent service representative

## Laser current out of range

**Error ID: 27**

Laser current outside of normal operating range.

**Probable cause**

- 1 Defective Laser assembly

**Suggested actions**

Please contact your Agilent service representative

## Laser interlock open or failed

**Error ID: 28**

The laser interlock on the detector enclosure is open or failed.

**Probable cause**

- 1 Module enclosure is open
- 2 Interlock not connected to main board
- 3 Interlock wiring is faulty
- 4 Defective main board.

**Suggested actions**

- Close the module enclosure
  - Please contact your Agilent service representative
- Please contact your Agilent service representative
- Please contact your Agilent service representative.

## Communication to Laser failed

**Error ID: 29**

Communication between main board and laser assembly has failed.

**Probable cause**

- 1** Laser assembly not connected to main board
- 2** Defective Laser assembly
- 3** Defective main board.

**Suggested actions**

- Please contact your Agilent service representative
- Please contact your Agilent service representative
- Please contact your Agilent service representative.

## Leak Sensor failed

**Error ID: 30**

The leak sensor in the module has failed.

**Probable cause**

- 1** Leak sensor not connected to the main board.
- 2** Defective leak sensor.
- 3** Defective main board.

**Suggested actions**

- Please contact your Agilent service representative.
- Please contact your Agilent service representative.
- Please contact your Agilent service representative.

## **8 Error Information**

### **Module Specific Error Messages**



## 9 Maintenance

Introduction to Maintenance	96
Cautions and Warnings	97
Cleaning the Module	98
Inspection of Cables	99
Drying the Diffuser	100
Cleaning the Nebuliser	101
Cleaning Evaporator Tube	102
Putting the Instrument into Storage	103
Updating Detector Firmware	104

This chapter describes the maintenance of the ELSD.



## Introduction to Maintenance

Trained personnel only should carry out maintenance inside the unit. There are no user serviceable parts inside the instrument. Unauthorized access to the instrument will invalidate the instrument warranty.

### Information for Service Personnel

Please note that this instrument is double fused.

The following fuses are fitted:

- 2x T2A H 250 V



## Cautions and Warnings

### WARNING

The module is partially energized when switched off, as long as the power cord is plugged in.

Repair work at the module can lead to personal injuries, e.g. electrical shock, when the cover is opened and the module is connected to power.

- Always unplug the power cable before opening the cover.
  - Do not connect the power cable to the instrument while the covers are removed.
- 

### WARNING

Toxic, flammable and hazardous solvents, samples and reagents

The handling of solvents, samples and reagents can hold health and safety risks.

- When working with these substances observe appropriate safety procedures (for example by wearing goggles, safety gloves and protective clothing) as described in the material handling and safety data sheet supplied by the vendor, and follow good laboratory practice.
  - The volume of substances should be reduced to the minimum required for the analysis.
  - Do not operate the instrument in an explosive atmosphere.
- 

### WARNING

Fire and damage to the module

Wrong fuses

- Make sure that only fuses with the required rated current and of the specified type (super-fast, fast, time delay etc) are used for replacement.
  - The use of repaired fuses and the short-circuiting of fuse-holders must be avoided.
- 

### CAUTION

Electronic boards and components are sensitive to electrostatic discharge (ESD).

ESD can damage electronic boards and components.

- Be sure to hold the board by the edges, and do not touch the electrical components. Always use ESD protection (for example, an ESD wrist strap) when handling electronic boards and components.
-

## Cleaning the Module

The exterior of the instrument should be cleaned by wiping down with a soft cloth moistened with dilute detergent solution, followed by wiping down with a cloth moistened with deionized water. Ensure that no moisture enters the instrument.

### WARNING

#### Electrical shock and burns

**Liquid in the module electronics can cause shock hazard and damage the module.**

- Switch off and disconnect power cord from instrument before cleaning.
  - Do not use an excessively damp cloth during cleaning.
  - Drain all solvent lines before opening any fittings.
  - Allow the instrument to dry off completely before reconnecting power.
-

## Inspection of Cables

Periodically inspect the connecting cables for signs of physical damage caused by abrasion, solvent spillage, impact etc.

Replace damaged cables, particularly the power cord, if any damage is observed.

## Drying the Diffuser

If the instrument has been operated incorrectly the diffuser may become blocked with liquid. This is manifested by loss of signal, increased baseline noise and in the extreme case gas bubbling out of the nebuliser drain tube. If this happens, proceed as follows:

- 1** Increase the gas flow to 2.8 SLM and increase the evaporator to maximum temperature.

The diffuser will be dried out and the instrument ready to use after approximately 1 h under these conditions.

- 2** Reset the instrument to the correct operating conditions and allow to stabilize before continuing.

## Cleaning the Nebuliser

A loss of sensitivity is a common indicator that the nebuliser requires cleaning. Flushing can remove blockages. Therefore it is recommended to initially flush the instrument with a suitable solvent (for example water).

The most common cause of nebuliser blockage is precipitation of mobile phase buffer. This blockage occurs either at the nebuliser tip or within the inlet tube leading to the nebuliser.

**To clean the nebuliser, the following procedure is recommended.**

- 1 Put the ELSD into RUN mode.
- 2 Set the evaporator and nebuliser temperatures to 40 °C and the gas flow to 1.6 SLM.
- 3 Set pump flow rate to 5 mL/min.
- 4 Remove the column, select a suitable solvent (for example water if using aqueous buffers) and pump for 3 h or set pump flow rate to 1 mL/min and run overnight.

---

**NOTE**

Pump the highest flow-rate possible if backpressure of ELSD is too high at 5 mL/min.

---

**NOTE**

It is not possible to pump solvent into the ELSD if the nebuliser becomes completely blocked.

It is strongly recommended to regularly flush the ELSD with water to keep the nebuliser clear of obstruction.

---

## Cleaning Evaporator Tube

If the evaporator tube becomes contaminated with non-volatile material resulting in poor chromatography, it is recommended that the instrument is initially washed with a solvent suitable for the contamination, or a 1:1 mixture of acetone/water.

Depending on usage, it is recommended to clean the evaporator tube once a week or every 40 h of use as a preventative routine. It is also recommended to clean the unit following the use of buffers. If cleaning the unit does not cure the problems then consult Agilent Technologies for further assistance.

---

**NOTE**

Do not use solvents that contain additives when performing the cleaning procedure.

---

**NOTE**

Ensure that the instrument is at equilibrium under the below conditions before leaving the instrument unattended.

- 
- 1 Set the evaporator temperature to 40 °C, the nebuliser temperatures at 40 °C and the gas flow to 2.8 SLM.
  - 2 Pump the “cleaning” solvent into the instrument at 1 – 2 mL/min, (whilst in the RUN mode) overnight or for a minimum of 4 h if overnight operation is not possible.

## Putting the Instrument into Storage

If the instrument is to be stored or not used for an extended period of time it is recommended to follow the procedure outlined below:

- 1** Flush the detector with a mixture of Acetone/Water (50/50) at 1 mL/min for 15 min.
- 2** Allow the instrument to cool to ambient temperature in STANDBY mode with the gas supply still connected.
- 3** Tip the instrument forwards to try and empty the solvent within the nebulization chamber through the front waste tube (i.e. into the bottle).
- 4** Pour 10 – 20 mL of acetone into the rear exhaust tube to flush out the internal solvent trap, collecting any overflow of acetone at the front solvent pipe.
- 5** Repeat step 3 to drain the acetone.
- 6** Disconnect the waste bottle.
- 7** Using the gas supply, blow nitrogen gas through the exhaust to evaporate any remaining acetone in the solvent trap. Cover the waste tube with tissue paper to collect any acetone residue.
- 8** Plug the exhaust, waste tubes and solvent inlet with the plastic caps provided.

## Updating Detector Firmware

The 1290 Infinity II ELSD Firmware can be upgraded using Lab Advisor. Where Lab Advisor is not available, the following process may be used.

The Agilent 1290 Infinity II ELSD (G7102A) also contains additional firmware on the Peltier unit and the Laser assembly.

Firmware on all three assemblies can be upgraded using the same process.

Firmware upgrade is only possible via the serial port.

<b>When</b>	For majority of internal repairs
<b>Tools required</b>	<b>Description</b> Allen keys TERA TERM software Current firmware file
<b>Parts required</b>	<b>Description</b> Serial cable (supplied with instrument)

### NOTE

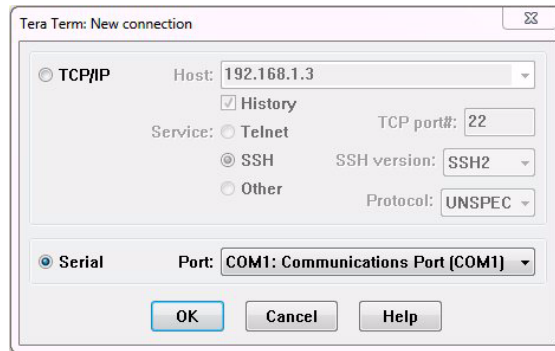
Only Firmware versions v30.42 or later are compatible with the 1290 Infinity II ELSD.

**To upgrade/downgrade the modules firmware carry out the following steps:**

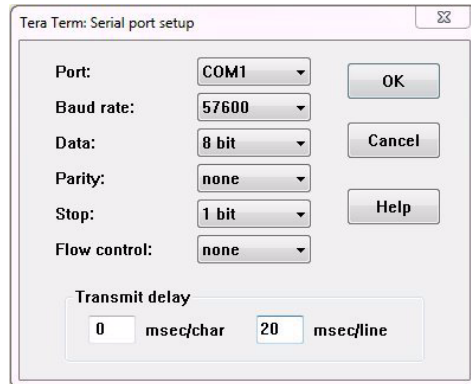
- 1 Connect the detector to a PC, via the serial port on the rear of the module, using a RS232 cable.
- 2 Open the Tera Term program, and select **File > New Connection** from the toolbar.



- 3 Select **Serial** and choose the appropriate COM port, followed by **OK**.



- 4 From the toolbar menu , select **Setup > Serial Port** to configure the serial port connection.
- 5 Set the **Serial port** to the parameters shown below and click **OK**.



The **Transmit delay** values should be set according to the table below:

**Table 8** Transmit delay values

Firmware type	msec/char	msec/line
Main	0	20
Safety	0	35
Laser	0	35

## 9 Maintenance

### Updating Detector Firmware

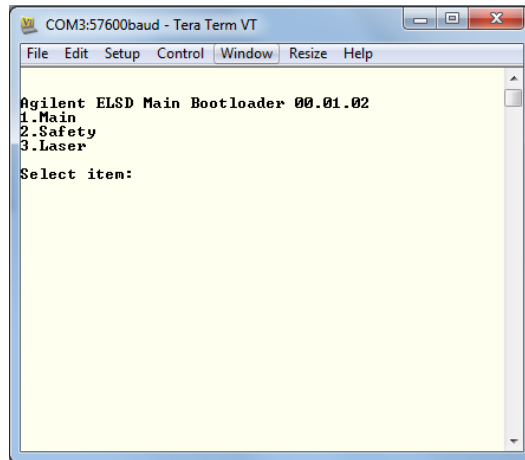
- Put the detector into Service mode by holding down the rear Flash button whilst switching on the module.

The front panel will display:

#### **SERVICE MODE**

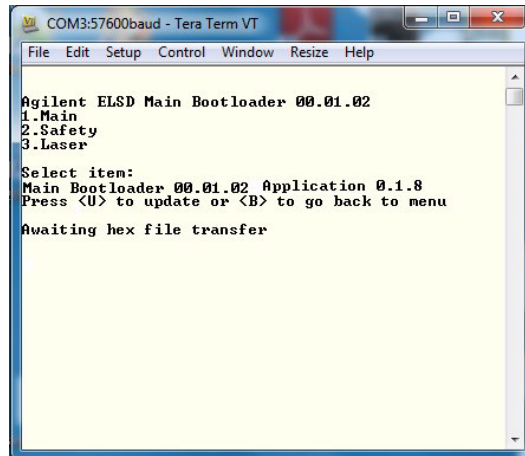
#### **Reboot for normal operation**

When in Service mode, the Tera Term displays the bootloader version and firmware menu.

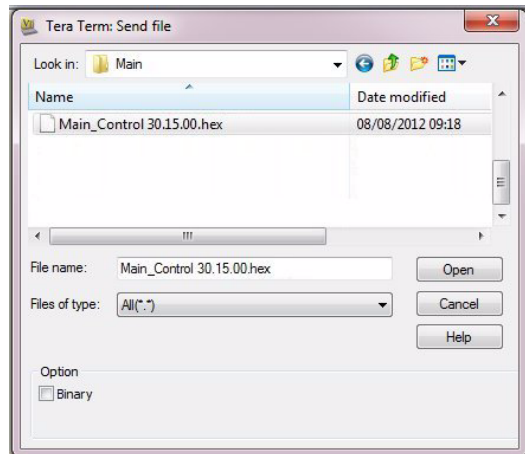


- Select the firmware you wish to upgrade/downgrade by pressing the appropriate number (e.g. press **1** to upgrade the main control firmware).

8 Press **U** to begin the update process.



9 To choose the firmware file, select the **Send File** option from the **File** menu in the toolbar and navigate to the folder where the file is located.



## 9 Maintenance

### Updating Detector Firmware

- 10 Select the firmware hex file and click **Open**.

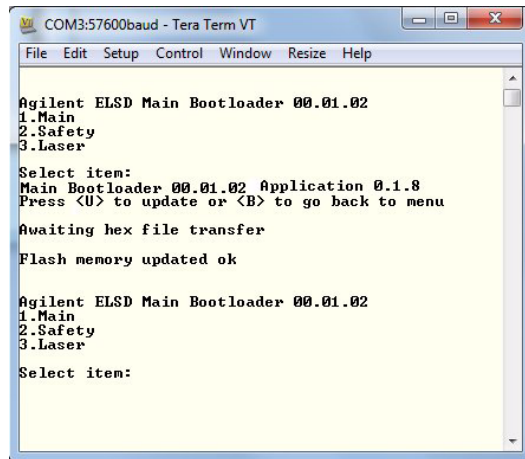
The download will begin straightaway and progress will be displayed, as shown.



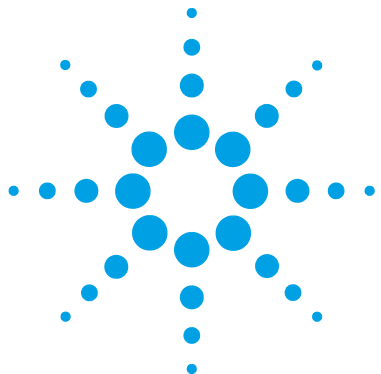
#### NOTE

Do not disconnect or turn off the detector during the transfer process.

- 11 On successful completion of the file transfer, the software will display a **Flash memory updated ok** message.



- 12 Power cycle the module and check that the firmware version displayed on the ELSD front panel at boot-up is correct.



## 10 Parts and Materials for Maintenance

Identifying Parts and Materials 110

This chapter provides information on parts for maintenance.



## Identifying Parts and Materials

<b>p/n</b>	<b>Description</b>
G7102A	Agilent 1290 Infinity II Evaporative Light Scattering Detector
PL0890-0305	Gas inlet tube (2 m)
PL0890-0310	Rear exhaust hose (PVC-2 m)
PL0890-0315	Solvent waste tube (2 m)
PL0890-0325	RS232 communication cable
G4260-63001	Infinity II Modules to ELSD Trigger Cable
G4260-63002	Infinity II Trigger Cable for Dimension Software
PL0890-0640	ELSD Air Adapter Kit
8121-0008	LAN shielded cable
G4260-60005	1200 Series to ELSD Trigger Cable
PL0890-0350	Remote start cable (3rd party cable for Dimension software)
G7102-90000	Agilent 1290 Infinity II Evaporative Light Scattering Detector User Manual



## 11 Appendix

General Safety Information [112](#)

Waste Electrical and Electronic Equipment Directive [115](#)

Radio Interference [116](#)

Agilent Technologies on Internet [117](#)








This chapter provides addition information on safety, legal and web.



## General Safety Information

### Safety Symbols

**Table 9** Safety Symbols

Symbol	Description
	The apparatus is marked with this symbol when the user should refer to the instruction manual in order to protect risk of harm to the operator and to protect the apparatus against damage.
	Indicates dangerous voltages.
	Indicates a protected ground terminal.
	The apparatus is marked with this symbol when hot surfaces are available and the user should not touch it when heated up.
	External Laser warning label located on rear of detector
	Internal Laser warning label located on light source
	Internal Laser beam label located on light source



**WARNING**

**A WARNING**

**alerts you to situations that could cause physical injury or death.**

- Do not proceed beyond a warning until you have fully understood and met the indicated conditions.
- 

**CAUTION**

**A CAUTION**

**alerts you to situations that could cause loss of data, or damage of equipment.**

- Do not proceed beyond a caution until you have fully understood and met the indicated conditions.
- 

## General Safety Information

The following general safety precautions must be observed during all phases of operation, service, and repair of this instrument. Failure to comply with these precautions or with specific warnings elsewhere in this manual violates safety standards of design, manufacture, and intended use of the instrument. Agilent Technologies assumes no liability for the customer's failure to comply with these requirements.

**WARNING**

**Ensure the proper usage of the equipment.**

**The protection provided by the equipment may be impaired.**

- The operator of this instrument is advised to use the equipment in a manner as specified in this manual.
- 

## Safety Standards

This is a Safety Class I instrument (provided with terminal for protective earthing) and has been manufactured and tested according to international safety standards.

## Operation

Before applying power, comply with the installation section. Additionally the following must be observed.

Do not remove instrument covers when operating. Before the instrument is switched on, all protective earth terminals, extension cords, auto-transformers, and devices connected to it must be connected to a protective earth via a ground socket. Any interruption of the protective earth grounding will cause a potential shock hazard that could result in serious personal injury. Whenever it is likely that the protection has been impaired, the instrument must be made inoperative and be secured against any intended operation.

Make sure that only fuses with the required rated current and of the specified type (normal blow, time delay, and so on) are used for replacement. The use of repaired fuses and the short-circuiting of fuse holders must be avoided.

Some adjustments described in the manual, are made with power supplied to the instrument, and protective covers removed. Energy available at many points may, if contacted, result in personal injury.

Any adjustment, maintenance, and repair of the opened instrument under voltage should be avoided whenever possible. When inevitable, this has to be carried out by a skilled person who is aware of the hazard involved. Do not attempt internal service or adjustment unless another person, capable of rendering first aid and resuscitation, is present. Do not replace components with power cable connected.

Do not operate the instrument in the presence of flammable gases or fumes. Operation of any electrical instrument in such an environment constitutes a definite safety hazard.

Do not install substitute parts or make any unauthorized modification to the instrument.

Capacitors inside the instrument may still be charged, even though the instrument has been disconnected from its source of supply. Dangerous voltages, capable of causing serious personal injury, are present in this instrument. Use extreme caution when handling, testing and adjusting.

When working with solvents, observe appropriate safety procedures (for example, goggles, safety gloves and protective clothing) as described in the material handling and safety data sheet by the solvent vendor, especially when toxic or hazardous solvents are used.

## Waste Electrical and Electronic Equipment Directive

### Abstract

The Waste Electrical and Electronic Equipment (WEEE) Directive (2002/96/EC), adopted by EU Commission on 13 February 2003, is introducing producer responsibility on all electric and electronic appliances starting with 13 August 2005.

#### NOTE

This product complies with the WEEE Directive (2002/96/EC) marking requirements. The affixed label indicates that you must not discard this electrical/electronic product in domestic household waste.

Product Category:

With reference to the equipment types in the WEEE Directive Annex I, this product is classed as a Monitoring and Control Instrumentation product.

---



#### NOTE

Do not dispose of in domestic household waste

To return unwanted products, contact your local Agilent office, or see [www.agilent.com](http://www.agilent.com) for more information.

---

## Radio Interference

Never use cables other than the ones supplied by Agilent Technologies to ensure proper functionality and compliance with safety or EMC regulations.

## Agilent Technologies on Internet

For the latest information on products and services visit our worldwide web site on the Internet at:

<http://www.agilent.com>

# Index

## A

Agilent  
 on internet 117  
 ambient non-operating temperature 22  
 ambient operating temperature 22

## B

baseline noise 76  
 bench space 21

## C

cleaning 98  
 column  
 consideration 64  
 communication to laser failed 93  
 considerations 63  
 controlling during injection 59  
 controlling  
 ChemStation 62  
 EZChrom 62  
 cooled evaporator current out of range or  
 communication failed 91  
 cooled evaporator temperature  
 problem 81

## D

data output rate 57  
 defect on arrival 26  
 delivery checklist 27  
 detector operation 31  
 detector sensitivity 12  
 detector  
 front view 13

overview 13  
 diffuser  
 drying 100  
 dimensions 22  
 display not on 80  
 drying  
 diffuser 100

## E

electronic waste 115  
 electrostatic discharge (ESD) 97  
 error conditions 54  
 error messages  
 communication to laser failed 93  
 cooled evaporator current out of range  
 or communication failed 91  
 evaporator gas flow rate limit  
 exceeded 89  
 evaporator temperature limit  
 exceeded 89  
 fan failed on cooled evaporator 91  
 fan failed 87  
 fan stopped 88  
 internal temperature exceeded lower  
 limit 85  
 internal temperature exceeded upper  
 limit 85  
 invalid evaporator temperature 90  
 invalid nebulizer temperature 90  
 laser current out of range 92  
 laser interlock open or failed 92  
 laser temperature out of range 92  
 leak detected 87  
 leak sensor failed 93  
 nebulizer temperature limit  
 exceeded 88

on-board vapor sensor failed 86  
 rear vapor sensor failed 86  
 vapor detected 86  
 error  
 clearing 54  
 evaporator gas flow rate limit  
 exceeded 89  
 evaporator temperature limit  
 exceeded 89  
 evaporator temperature zero 81  
 evaporator temperature 12, 55

## F

fan failed on cooled evaporator 91  
 fan failed 87  
 fan stopped 88  
 flat baseline 78, 80  
 frequency range 22

## G

gas flow 56

## H

humidity 22

## I

inspecting cables 99  
 installation  
 bench space 21  
 site requirements 17  
 instrument controls 51  
 instrument errors 54  
 instrument fails to zero 79

- interactive menu bar 52
- internal temperature exceeded lower limit 85
- internal temperature exceeded upper limit 85
- internet 117
- introduction
  - ELSD 8
- invalid evaporator temperature 90
- invalid nebulizer temperature 90
- K**
- keypad 51
- L**
- LAN interface 34
- LAN
  - TCP/IP parameter configuration 35
- large baseline offset 78
- laser current out of range 92
- laser interlock open or failed 92
- laser temperature out of range 92
- leak detected 87
- leak sensor failed 93
- line frequency 22
- line voltage 22
- location
  - detector 69
- low sensitivity 77
- M**
- MAC address 34
- main menu bar 52
- method 55
  - loading 55
- N**
- nebuliser
  - cleaning 101
  - nebulizer temperature limit exceeded 88
  - no power 79
  - no response 80
  - non-operating altitude 22
  - non-operating temperature 22
- O**
- on-board vapor sensor failed 86
- operating Altitude 22
- operating temperature 22
- operation principle
  - detection 10
  - evaporation 9
- operational parameters 12
- operation
  - real time 59
- overview of detector 13
- P**
- packaging
  - damaged 26
- parts
  - damaged 27
  - missing 27
- peak tailing 79
- physical specifications 22
- power consideration 19
- power consumption 22
- power cords 20
- power mode 57
- power switch 28
- pre-installation
  - requirements 18
- preparation
  - sample 64
- priming 71
- pump 70
- R**
- real-time control
  - starting 60
  - stopping 60
- real-time program
  - creating 59
- rear vapor sensor failed 86
- requirements
  - pre-installation 18
- response time 57
- S**
- safety class I 113
- safety
  - general information 113
  - standards 22
  - symbols 112
- site requirements 17
  - power cords 20
- smoothing 57
- solvent
  - recommendation 64
- specification conditions 24
- specification
  - physical 22
- specifications 17
- spiky peak tops 78
- status mode 53
- storage 103
- T**
- TCP/IP parameter configuration 35
  - using front panel 36
  - using web browser 37
  - with telnet 40
- TCP/IP settings
  - local configuration 43
- temperature error 80

## Index

temperature methods  
    transfer 66  
temperature 56  
troubleshooting  
    error messages 84  
    HPLC system 75

## U

unpacking 26

## V

vapor detected 86  
vapor sensor error 81  
voltage range 22

## W

waste  
    electrical and electronic  
    equipment 115  
WEEE directive 115  
weight 22





[www.agilent.com](http://www.agilent.com)

## In This Book

This manual contains information on the Agilent 1290 Infinity II Evaporative Light Scattering Detector (G7102A).

The manual describes the following:

- Introduction
- Site Requirements and Specifications
- Installation
- Using
- Optimizing
- Troubleshooting and Diagnostics
- Error Information
- Maintenance
- Parts
- Safety

© Agilent Technologies 2014

Printed in Germany  
08/2014



G7102-90000



**Agilent Technologies**