

Enabling Screen Lock Protection

You can increase your device's security by creating a screen unlock pattern (disabled by default). When enabled, you must draw the correct unlock pattern on the screen to unlock and regain access to the device.

1. Tap **Application Drawer** > **Settings** > **Location & security**.
2. Tap **Set up screen lock**.
3. Tap **Pattern** to draw pattern to unlock screen.
4. Follow on-screen instructions to draw your own personal unlock pattern and tap **Next**. Draw your unlock pattern and tap **Continue**
5. Redraw your unlock pattern again and tap **Confirm**.

9.5 Resetting the Device

You can reset your phone to its factory defaults.

1. Tap **Application Drawer** > **Settings** > **Privacy**
2. Tap **Factory data reset**.
3. Tap **Reset phone** .

Chapter 10: Using PC Tools Application

PC Tools application is a software that enables you to do the following when your device is connected to a computer. Available modes are as follows..

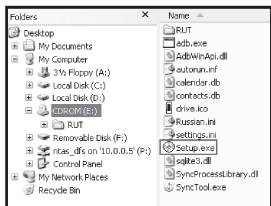
1. **Language** : Select the language .
2. **USB Mass Storage** : Allows you to use your device in U disk mode.
3. **Synchronization Tool** : Allows you to sync your device with a computer.



10.1 Using PC Tools Application

Installing the Driver

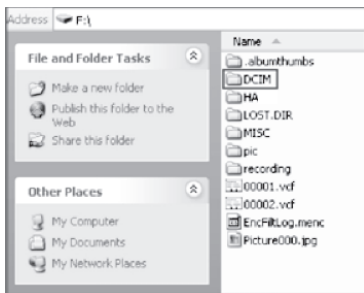
1. Turn on your device, and connect it to your computer using the USB cable.
2. From the Windows desktop, double click on **My Computer** and locate the **CD drive**.
3. Browse and double click **Setup.exe** .
4. Follow the on - screen instructions to complete the driver installation



Using Your Device as a Storage Device

To browse and transfer video, still images, music etc to a computer, do the following:

1. In PC Tools application, select USB Mass Storage.
2. The Removable Disk window appears on the screen or go to My computer and select the Removable disk.
3. Locate your desired folder and double click on the folder to open it to find more folders. For example If you choose the DCIM folder and double click on this folder then you will get the folders containing your recorded images and video clips.
4. Do the editing features like Copy , paste, rename, etc.

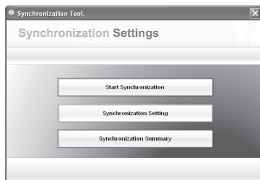


Using Your Device to Sync with a Computer

This feature allows you to sync your device with a computer.

In PC Tools application, select **Synchronization Tool**

- **Start Synchronization:** allows you to initiate synchronization.
- **Synchronization Setting:** allows you to set the synchronization settings. Follow the on-screen instructions to complete the settings.
- **Synchronization Summary:** displays the summary of the synchronization process.



Safety Information

Please read before proceeding

- Use only the batteries and power adapter provided by the manufacturer. Use of unauthorized accessories may void your warranty.
- Do not remove the battery while the device is charging.
- Avoid using the device near electromagnetic sources such as TVs, radios, and microwave ovens.
- Unplug the power adapter from the wall outlet during lightning storms to avoid electric shock or fire.
- Do not expose the device or the battery to direct sunlight.
- Do not store your device in temperatures higher than 70°C or 158°F.
- Do not use harsh chemicals or detergents to clean your device.
- Do not handle the device with wet hands while it is being charged. This may cause an electric shock or serious damage to the device.

SAFETY PRECAUTIONS FOR BATTERY USE

- Use only approved battery.
- Keep the battery dry and away from any liquid since this may cause a short circuit.
- Keep the battery away from metal objects since this may cause a short circuit.
- Do not use damaged or deformed batteries.
- If the battery emits a foul odor, discontinue use.
- Keep the battery away from babies and small children.
- If the battery leaks:
 - Do not allow the leaking fluid to come in contact with your skin, eyes or clothing. If already in contact, rinse with clean water immediately and seek medical advice.
- Keep the battery away from fire since this may cause the battery to explode.
- Do not attempt to open or service the battery yourself.
- Do not dispose battery in fire or water.
- Recycle or dispose used batteries according to the local regulations.

ROAD AND ENVIRONMENTAL SAFETY

- Turn off the device in areas with a potentially explosive atmosphere or where flammable objects exist such as gas stations, fuel depots, and chemical plants among others. Sparks from these areas could cause explosion or fire and result in injury or even death.
- Do not use hand held phones while driving a vehicle. Use hands free devices as an alternative.

SAFETY IN AIRCRAFT

Do not use the device on board an aircraft. The device network signals may cause interference to the navigation system. As a safety measurement, it is against the law in most countries to use the device on board an aircraft.

SPECIFICATIONS

Radio Band & Standard	
GSM bands	850 / 900 / 1800 / 1900
UMTS bands	900 / 1900 / 2100
GPRS	GPRS Class 12
EGPRS/EDGE	Multi-Slot Class 12
UMTS	DL / UL, HSUPA 7.2Mbps
Connectivity	
GPS	GPS / AGPS
Wi Fi	802.11 b/g
Bluetooth	2.1 + EDR
USB	USB 2.0 High-Speed client
Power	
Battery	3240mAh-with-hard packed Li Polymer
AC Adaptor	AC input voltage: 100 240Vac, 50 / 60Hz AC input current: 300mAac max. DC output voltage: 5Vdc (typical) DC output current: 2A (typical)
Temperature	
Operating	-15°C to 55°C
Charging	0°C to 40°C
Humidity	
Operating	10% to 90% non condensing

www.olive.net

The image features a black background with abstract, flowing lines in shades of green and grey. A prominent, bright green wave-like shape curves across the middle. Below it, a series of thin, grey lines form a grid pattern that also follows a curved path. The overall aesthetic is modern and digital.