

Introduction

This user manual describes the EVALSTPM34, EVALSTPM33, EVALSTPM32 evaluation board.

The STPM3x is an ASSP family of mixed signals designed for high accuracy measurement of power and energy in power line systems using the Rogowski coil, current transformer or shunt current sensors. According to p/n, the device has up to two voltages and two current channels, for energy measurement in dual-phase and single-phase (with or without neutral current monitoring) electricity metering systems.

The STPM3x devices provide instantaneous voltage and current waveforms and calculate voltage and current RMS values, active, reactive and apparent powers and energies for each channel. Moreover, they embed a full set of calibration and compensation parameters which allow the meter to fit tight accuracy standards (EN 50470-x, IEC 62053-2x, ANSI12.2x for AC watt meters). All calculated data, as well as configuration parameters, are stored in internal 32-bit registers accessible through SPI or UART peripheral.

Three boards are available for evaluation purpose:

- EVALSTPM34 board with 2 CT
- EVALSTPM33 board with CT + shunt
- EVALSTPM32 board with shunt

The main features of these boards are:

- 0.2% accuracy single-phase meter reference design
- USB port for connection to the isolated hardware programmer STEVAL-IPE023V1 and PC GUI
- RS232 and UART isolated port for connection to PC GUI
- SPI/UART switch for device peripheral selection
- 2x programmable LEDs on-board
- Digital expansion to external system-on-chip or MCU
- Power supply 3.3 V: external or through the STEVAL-IPE023V1 isolated USB board
- IEC61000 standard compliant

Contents

- 1 Overview 3**
 - 1.1 Safety rules 4
 - 1.2 Operating conditions 4
 - 1.3 Recommended readings 5
 - 1.4 Getting technical support 5

- 2 EVALSTPM34, EVALSTPM33, EVALSTPM32 board 6**
 - 2.1 Schematics 6
 - 2.2 Board description 9
 - 2.2.1 Hardware configuration 9
 - 2.2.2 Power supply 9
 - 2.2.3 Enable and reset 9
 - 2.2.4 Digital output 10
 - 2.2.5 SPI connection 10
 - 2.2.6 UART connection 11
 - 2.2.7 Metrology 11
 - 2.2.8 LED 12
 - 2.2.9 Clock 12
 - 2.2.10 Voltage reference 12
 - 2.3 Connection to the line 12
 - 2.4 Board setup 14
 - 2.4.1 Connection to PC GUI through the STEVAL-IPE023V1 14
 - 2.4.2 Connection to PC GUI through RS232 port 15
 - 2.5 Basic device configuration 15

- 3 Revision history 16**



1 Overview

Figure 1. EVALSTPM34 board

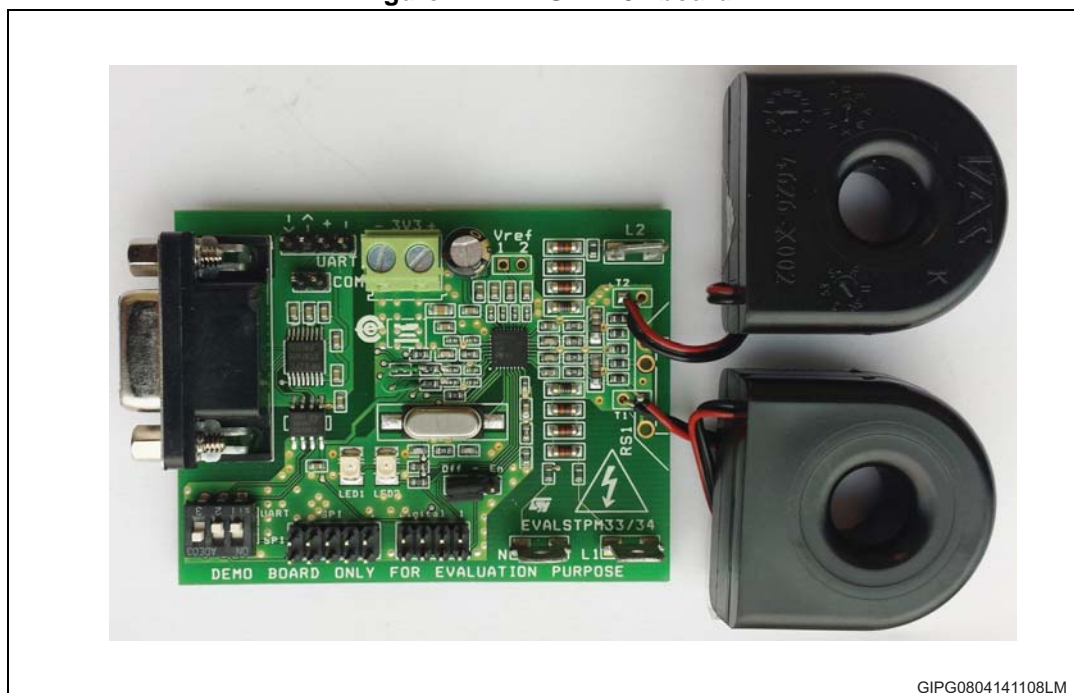


Figure 2. EVALSTPM33 board

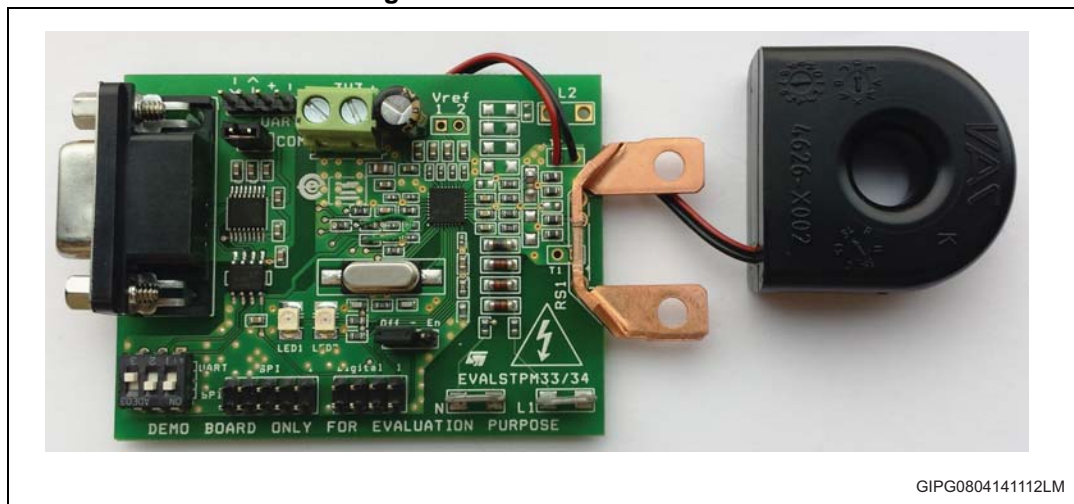
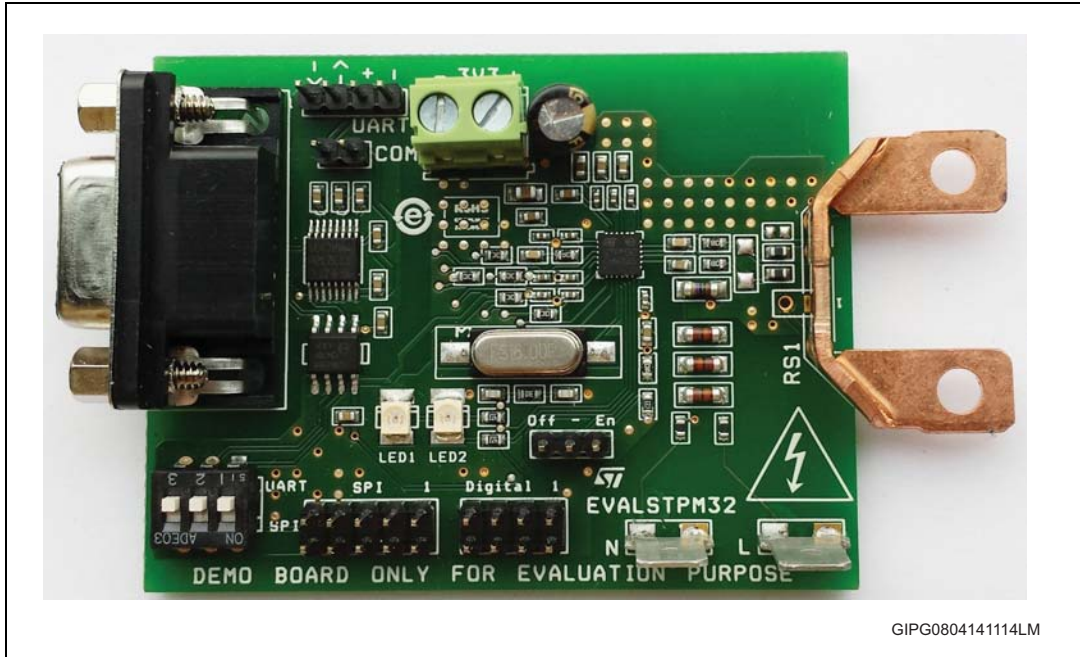


Figure 3. EVALSTPM32 board



GIPG0804141114LM

1.1 Safety rules

These boards can be connected to mains voltage (230 V/110 V). In case of improper use, wrong installation or malfunction, there is the risk of serious personal injury and damage to property. All operations such as: transport, installation, commissioning, and maintenance, should be carried out by technical skilled people (national accident prevention rules have to be observed) only.

1.2 Operating conditions

Table 1. Operating conditions

Parameter	Value
V_N nominal voltage	230 V_{RMS}
I_N nominal current	5 A_{RMS}
I_{Max} maximum current	100 A_{RMS}
C_P constant pulses	1000 imp/kWh
f_{line} line frequency	50/60 Hz \pm 10%
T_{OP} operating temperature	-40/+85 °C

1.3 Recommended readings

This document describes how to use and set up a basic test session with a GUI interface. Additional information is available in the following documents:

- STPM3x datasheet
- AN4470
- UM1719

1.4 Getting technical support

All our customers receive free technical assistance through local ST distributor/office or by visiting www.st.com; upgrades are also available free of charge on www.st.com/metering. Customers should work with the latest version of software/firmware before contacting us.

2 EVALSTPM34, EVALSTPM33, EVALSTPM32 board

2.1 Schematics

Figure 4. EVALSTPM34 and EVALSTPM33 board schematic (metrology)

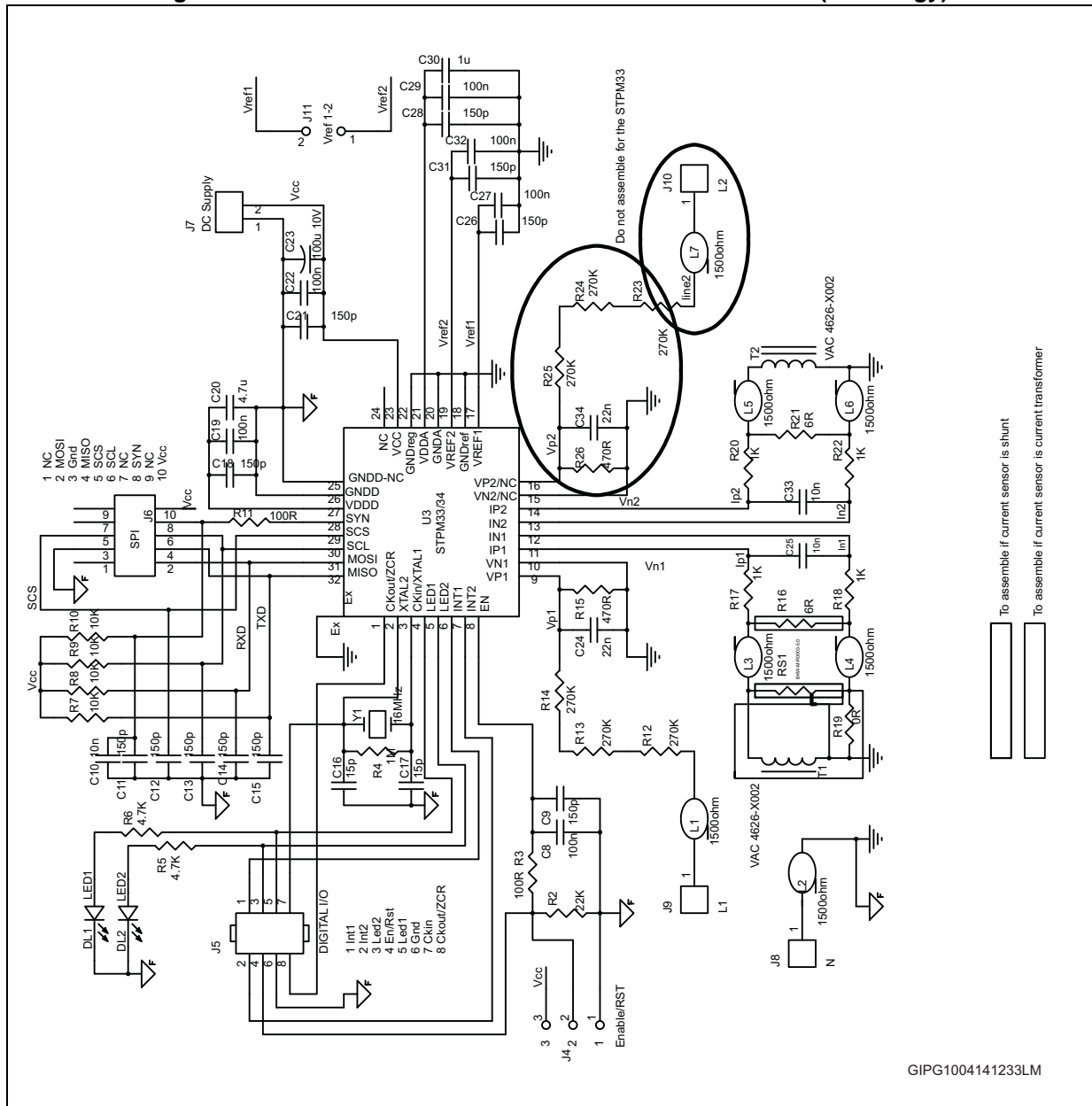


Figure 5. EVALSTPM32 board schematic (metrology)

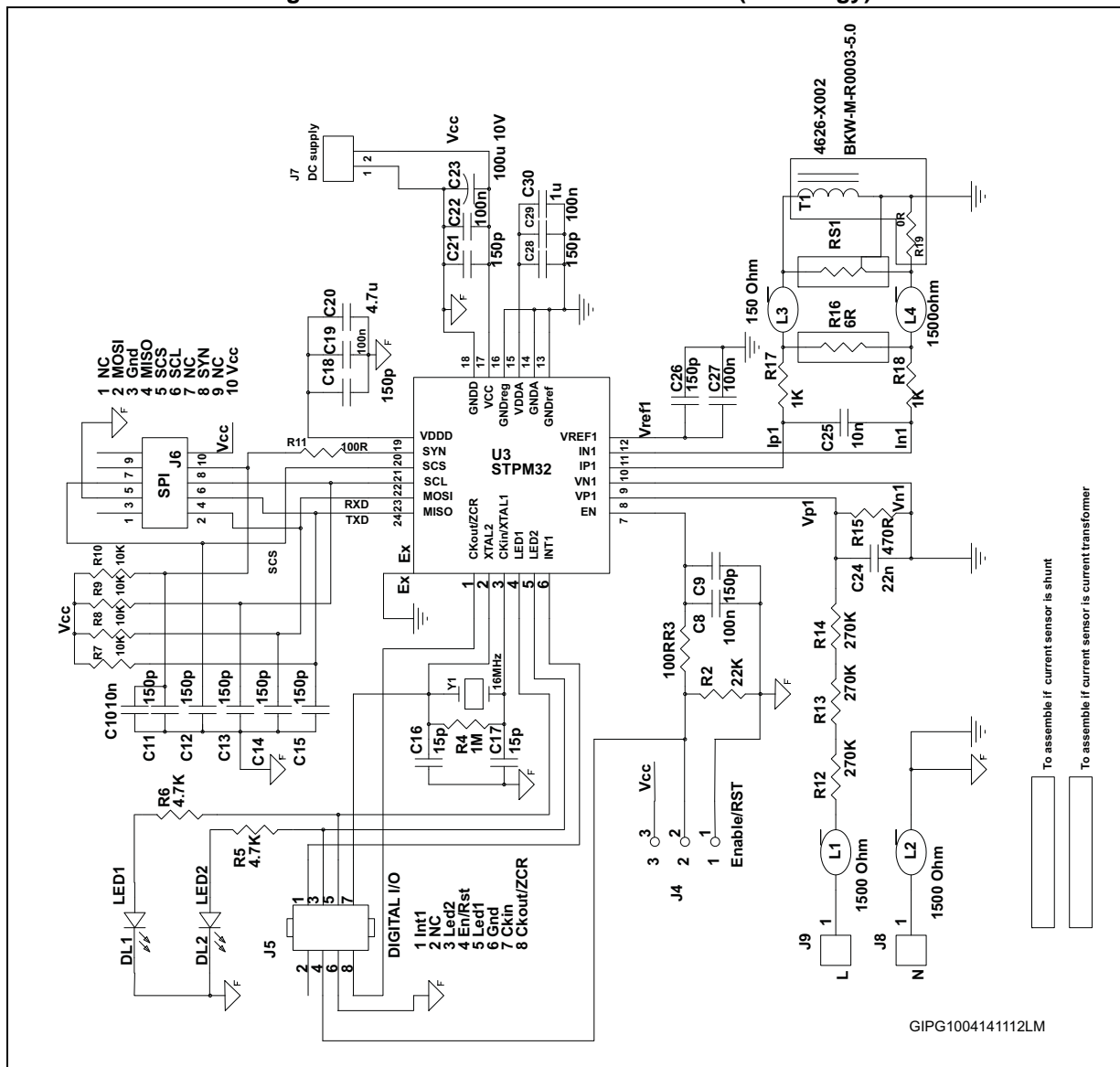
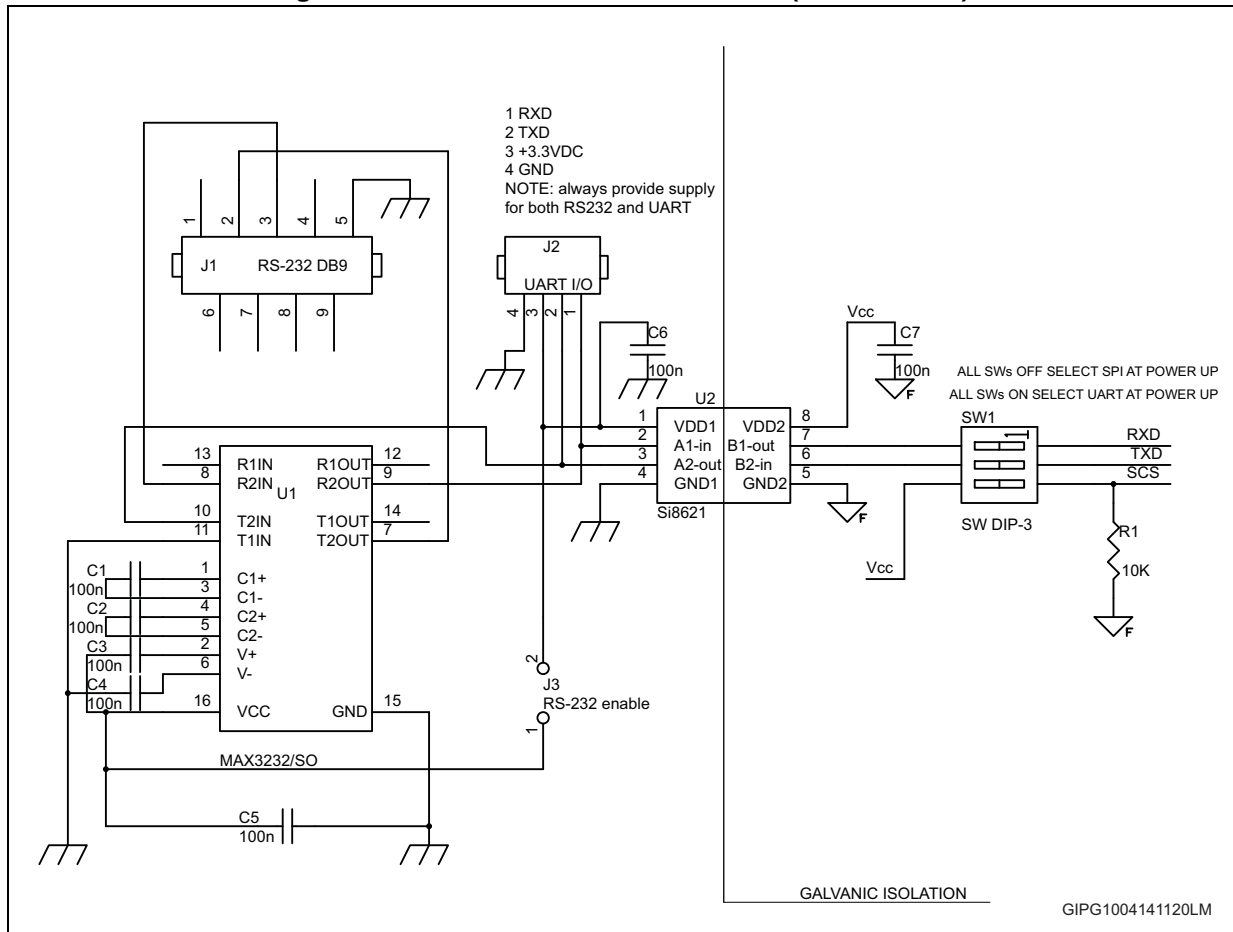


Figure 6. EVALSTPM3x board schematic (RS232/UART)



2.2 Board description

2.2.1 Hardware configuration

Table 2. EVALSTPM3x evaluation board setting and configuration terminals

Name	Description
J7	3.3 V external DC supply
J4	Device enable and reset
J5	Digital output pins
J6	SPI connector to the USB programmer/reader
J1	DB9 female connector for RS232 port
J2	UART isolated pin connector
J3	RS232 enable
J11 ⁽¹⁾	V _{REF} jumper
SWC1	DIP switch for SPI/UART peripheral selection
L1	Primary voltage
L2 ⁽²⁾	Secondary voltage
I1	Primary current
I2	Secondary current

1. For the EVALSTPM34 and the EVALSTPM33 board only.
2. For the EVALSTPM34 board only.

2.2.2 Power supply

The board does not contain a power supply. V_{CC} = 3.3 V DC supply should be provided externally, by J7 connector. If the board is interfaced to PC by the STEVAL-IPE023V1 isolated dongle, it provides the board with supply.

2.2.3 Enable and reset

The STPM3x enable pin should be shorted to V_{CC} by keeping J4 jumper in EN position. To reset the device, this jumper has to be in OFF position (GND).

2.2.4 Digital output

8-pin J5 connector provides all digital output pins of the device as listed in [Table 3](#):

Table 3. J5 connector pinout

Connector pin	STPM3x pin
1	INT1
2	INT2 ⁽¹⁾
3	LED2
4	EN/RST
5	LED1
6	GND
7	CKIN/XTAL2
8	CKOUT/ZCR

1. For the EVALSTPM34 and the EVALSTPM33 board only.

2.2.5 SPI connection

To communicate with the device using the STEVAL-IPE023V1 isolated USB dongle, the STPM3x SPI peripheral has to be selected. All SWC1 switches have to be turned in OFF position before the device powers up. SPI pins are available in J6 connector (see [Table 4](#)) for 10-pin flat cable interfacing either to the STEVAL-IPE023V1 or to an external MCU.

Table 4. J6 SPI connector pinout

Name	Description
1	Not connected
2	MOSI
3	GND
4	MISO
5	SCS
6	SCL
7	Not connected
8	SYN
9	Not connected
10	VCC

Note: The STEVAL-IPE023V1 provides isolation, while J6 pins are not isolated.

2.2.6 UART connection

UART peripheral also communicates to the device. In this case, all SWC1 switches should be in ON position when the device powers up. RS232 port is isolated from the board through Si8621 transceiver to safely connect the board to PC; in this case, J3 jumper has to be connected. UART isolated pins are also available on J2 connector ([Table 5](#)) for MCU connection; in this case J3 jumper has to be disconnected. If UART connection is used, a separate 3.3 VDC has to be provided to UART section.

Table 5. J2 UART connector

Name	Description
1	RXD
2	TXD
3	+3.3 VDC
4	GND

2.2.7 Metrology

Current sensing is performed by CT or shunt, while voltage is sensed by voltage dividers. The EVALSTPM34 board has two currents and two voltage channels, while the EVALSTPM33 has two currents and one voltage channel, the EVALSTPM32 has one current and one voltage channel available. Main design parameters are listed in [Table 6](#).

Table 6. EVALSTPM3x evaluation board parameters

Channel	Parameter	Value
Primary current	Current sensor sensitivity $k_S^{(1)}$	2.4 mV/A
	Shunt sensor sensitivity ⁽²⁾	0.3 mV/A
Primary voltage	R_1 voltage divider upper resistor ⁽³⁾	810000 Ω
	R_2 voltage divider upper resistor ⁽³⁾	470 Ω
Secondary current ⁽⁴⁾	k_S current sensor sensitivity	2.4 mV/A
Secondary voltage ⁽¹⁾	R_1 voltage divider upper resistor ⁽³⁾	810000 Ω
	R_2 voltage divider upper resistor ⁽³⁾	470 Ω
Any	C_P constant pulse	41600 pulses/kWh

1. For the EVALSTPM34 board only.
2. For the EVALSTPM32 and EVALSTPM33 board only.
3. R1, R2 names do not refer to specific resistors on the schematic, but these names indicate voltage divider resistors.
4. For the EVALSTPM34 and EVALSTPM33 board.

A 22 nF capacitor in parallel with R2 implements an antialiasing filter for voltage signal. Regarding to current signal, the antialiasing filter is given by a 10 nF capacitor and 1 kOhm resistors.

2.2.8 LED

Two LEDs are connected to programmable LED pins of the device.

2.2.9 Clock

Clocking is provided to the board through 16 MHz quartz. 1 MOhm resistor and 15 pF capacitors are used to filter noise.

2.2.10 Voltage reference

The STPM34 and STPM33 devices embed two internal independent voltage references. J11 jumper shorts V_{REF} , or it can be used to connect the external precision voltage reference. The external reference should be connected between the desired V_{REF} and GND, if a single reference has to be used for both channels, V_{REF1} and V_{REF2} should be shorted by J11.

2.3 Connection to the line

The board can be connected to line voltage and current in several ways, as shown in below pictures.

Figure 7. Board connection to phantom load, dual-phase system (STPM34)

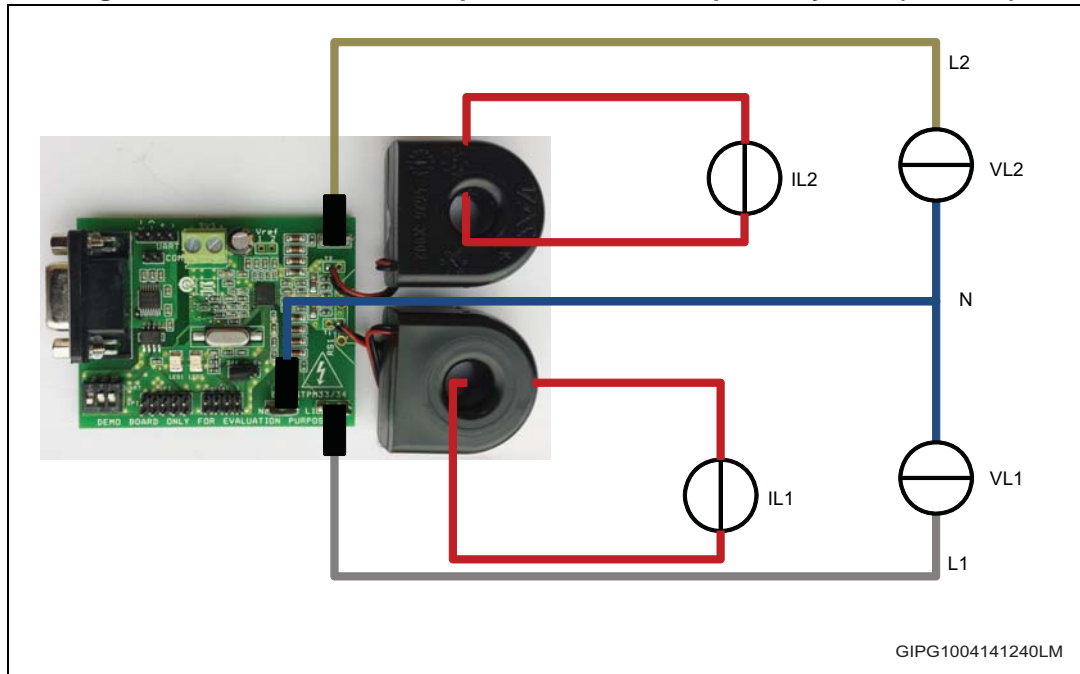


Figure 8. Board connection to phantom load, single-phase system with neutral monitoring (STPM34 and STPM33)

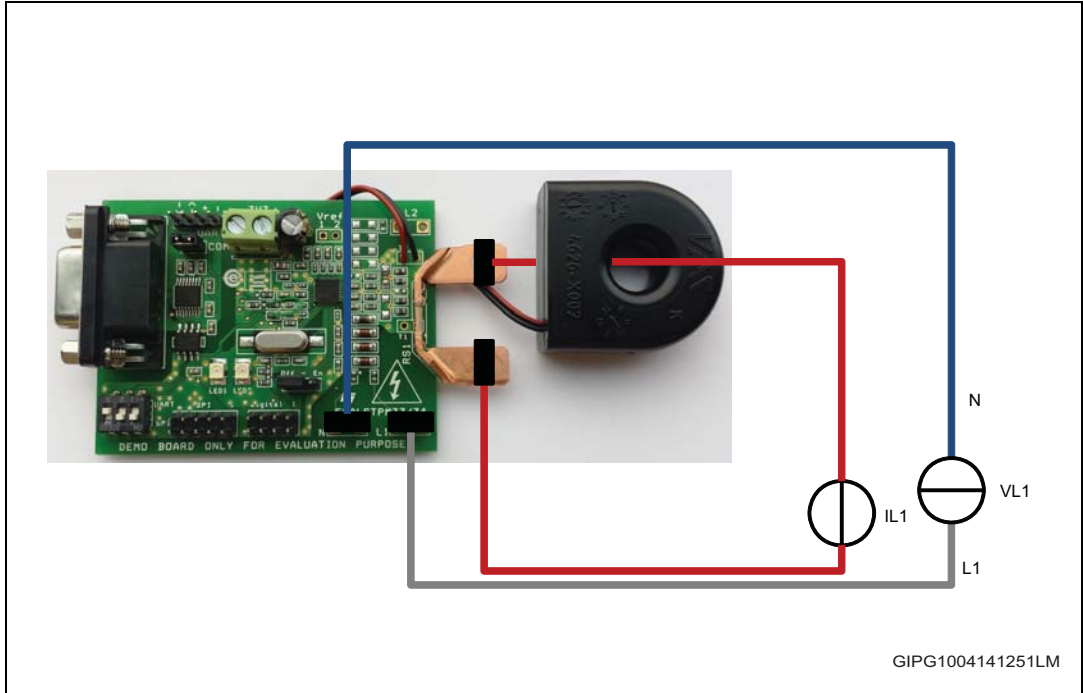


Figure 9. Board connection to phantom load, single-phase system (STPM3x)

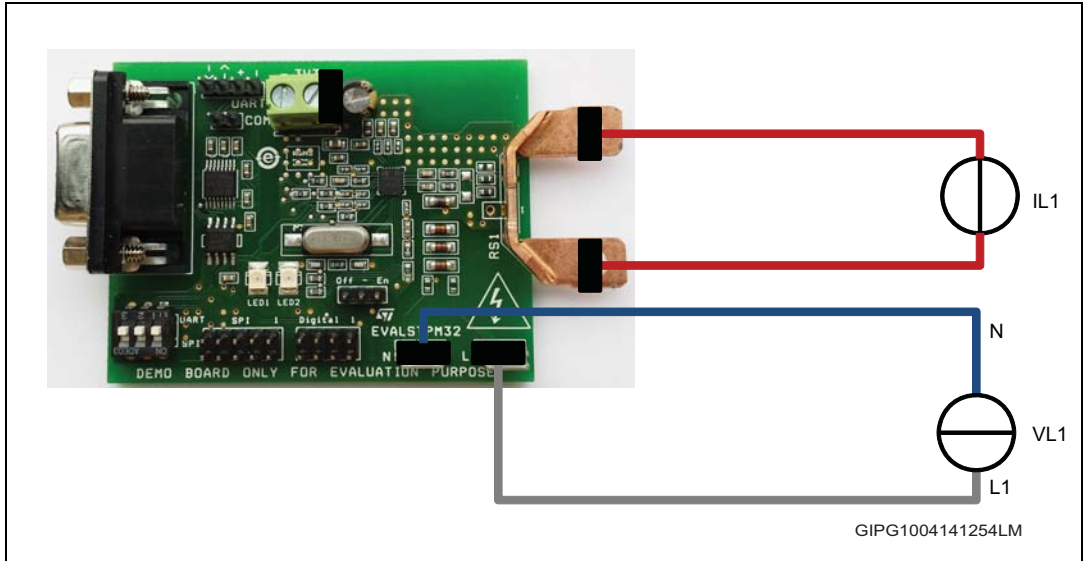
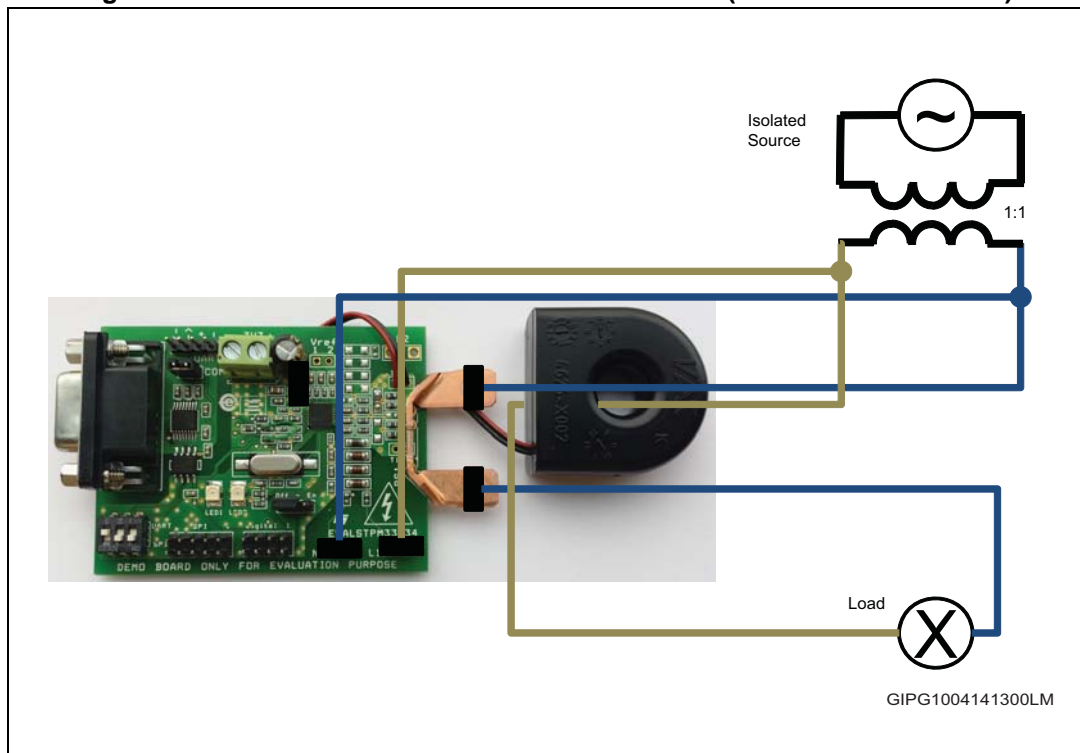


Figure 10. Board connection to isolated AC source (STPM34 and STPM33)



2.4 Board setup

Regarding to the STPM3x evaluation software setup and use, please refer to user manual UM1719.

The STEVAL-IPE023V1 is not included in the package, therefore it should be ordered separately. Please read the user manual, before using it.

2.4.1 Connection to PC GUI through the STEVAL-IPE023V1

To evaluate the board using STEVAL-IPE023V1 and the STPM3x evaluation software:

1. Put J4 enable jumper in EN position
2. Put SWC1 switches in OFF position
3. Put J4 jumper in the STEVAL-IPE023V1 board in 1 or 2 position (supply voltage set to 3.3 V)
4. Connect the EVALSTPM3x board to either AC line or power source or phantom load as shown in [Section 2.3](#), without powering it on
5. Connect the USB cable to the STEVAL-IPE023V1 board and to PC
6. Connect the flat SPI cable from USB board to the EVALSTPM3x board
7. Power on AC source
8. Open GUI
9. When green LED starts blinking click 'options', then 'interface', select 'USB' and select the proper 'serial port', baud rate is 19200
10. Read from device

2.4.2 Connection to PC GUI through RS232 port

To evaluate the board using a PC RS232 port and the STPM3x evaluation software:

11. Put J4 enable jumper in EN position
12. Enable RS232 port inserting J3 jumper
13. Put SWC1 switches in ON position
14. Connect the EVALSTPM3x board to the to either AC line or power source or phantom load as shown in [Section 2.3](#), without powering it on
15. Connect the serial cable to the board and to PC
16. Connect the flat SPI cable from USB board to the EVALSTPM3x board
17. Power on AC source
18. Open GUI
19. When green LED starts blinking click 'options', then 'interface', select 'USB' and select the proper 'serial port', baud rate is 19200
20. Read from device

2.5 Basic device configuration

During the startup, all internal device parameters are in the default value.

For the EVALSTPM34 board, primary channel gain GAIN[1:0] has to be changed to value 0 (current gain = x2), a correct energy measurement is, in this manner, assured. All other parameters can be changed according to the needs (board calibration, phase-shift compensation, desired output on the programmable pin...). For further information on the device configuration, please refer to the STPM3x datasheet.

3 Revision history

Table 7. Document revision history

Date	Revision	Changes
16-Apr-2014	1	Initial release.

Please Read Carefully:

Information in this document is provided solely in connection with ST products. STMicroelectronics NV and its subsidiaries ("ST") reserve the right to make changes, corrections, modifications or improvements, to this document, and the products and services described herein at any time, without notice.

All ST products are sold pursuant to ST's terms and conditions of sale.

Purchasers are solely responsible for the choice, selection and use of the ST products and services described herein, and ST assumes no liability whatsoever relating to the choice, selection or use of the ST products and services described herein.

No license, express or implied, by estoppel or otherwise, to any intellectual property rights is granted under this document. If any part of this document refers to any third party products or services it shall not be deemed a license grant by ST for the use of such third party products or services, or any intellectual property contained therein or considered as a warranty covering the use in any manner whatsoever of such third party products or services or any intellectual property contained therein.

UNLESS OTHERWISE SET FORTH IN ST'S TERMS AND CONDITIONS OF SALE ST DISCLAIMS ANY EXPRESS OR IMPLIED WARRANTY WITH RESPECT TO THE USE AND/OR SALE OF ST PRODUCTS INCLUDING WITHOUT LIMITATION IMPLIED WARRANTIES OF MERCHANTABILITY, FITNESS FOR A PARTICULAR PURPOSE (AND THEIR EQUIVALENTS UNDER THE LAWS OF ANY JURISDICTION), OR INFRINGEMENT OF ANY PATENT, COPYRIGHT OR OTHER INTELLECTUAL PROPERTY RIGHT.

ST PRODUCTS ARE NOT DESIGNED OR AUTHORIZED FOR USE IN: (A) SAFETY CRITICAL APPLICATIONS SUCH AS LIFE SUPPORTING, ACTIVE IMPLANTED DEVICES OR SYSTEMS WITH PRODUCT FUNCTIONAL SAFETY REQUIREMENTS; (B) AERONAUTIC APPLICATIONS; (C) AUTOMOTIVE APPLICATIONS OR ENVIRONMENTS, AND/OR (D) AEROSPACE APPLICATIONS OR ENVIRONMENTS. WHERE ST PRODUCTS ARE NOT DESIGNED FOR SUCH USE, THE PURCHASER SHALL USE PRODUCTS AT PURCHASER'S SOLE RISK, EVEN IF ST HAS BEEN INFORMED IN WRITING OF SUCH USAGE, UNLESS A PRODUCT IS EXPRESSLY DESIGNATED BY ST AS BEING INTENDED FOR "AUTOMOTIVE, AUTOMOTIVE SAFETY OR MEDICAL" INDUSTRY DOMAINS ACCORDING TO ST PRODUCT DESIGN SPECIFICATIONS. PRODUCTS FORMALLY ESCC, QML OR JAN QUALIFIED ARE DEEMED SUITABLE FOR USE IN AEROSPACE BY THE CORRESPONDING GOVERNMENTAL AGENCY.

Resale of ST products with provisions different from the statements and/or technical features set forth in this document shall immediately void any warranty granted by ST for the ST product or service described herein and shall not create or extend in any manner whatsoever, any liability of ST.

ST and the ST logo are trademarks or registered trademarks of ST in various countries.

Information in this document supersedes and replaces all information previously supplied.

The ST logo is a registered trademark of STMicroelectronics. All other names are the property of their respective owners.

© 2014 STMicroelectronics - All rights reserved

STMicroelectronics group of companies

Australia - Belgium - Brazil - Canada - China - Czech Republic - Finland - France - Germany - Hong Kong - India - Israel - Italy - Japan - Malaysia - Malta - Morocco - Philippines - Singapore - Spain - Sweden - Switzerland - United Kingdom - United States of America

www.st.com



Mouser Electronics

Authorized Distributor

Click to View Pricing, Inventory, Delivery & Lifecycle Information:

[STMicroelectronics:](#)

[EVALSTPM32](#) [EVALSTPM33](#) [EVALSTPM34](#)