

# **TRST-A10/TRST-A15 Printer Driver for Windows XP/2000 User's Manual**

First Edition : October 27, 2009  
2<sup>nd</sup> Edition : November 06, 2009

**TOSHIBA TEC SINGAPORE PTE LTD**

Copyright (C) 2009  
TOSHIBA TEC SINGAPORE PTE LTD

---

This document describes the precautions for using the TRST-A10/TRST-A15 Printer Driver for Windows XP/2000.

This document assumes that the reader is familiar with the following:

- General characteristics of Windows and Printer Driver for Windows.
- General characteristics of TRST-A10/TRST-A15 printer.

Notes:

- All rights reserved. It is prohibited to use or duplicate a part or whole of this document without the permission of TOSHIBA TEC SINGAPORE PTE LTD.
- This document is subject to change without prior notice.
- \* Microsoft, Windows, Windows 2000, and Windows XP are registered trademarks of Microsoft Corporation in the United States and/or other countries.
- \* The official name of Windows is the Microsoft Windows Operating System.

## RevisionRecord

No.SPAA-346

TRST-A10/TRST-A15-PrinterDriverforWindowsVISTA/XP/2000 User'sManual

Rev.No.	Date	Pages	Description
01	Oct27,2009	---	Originalissue
02	Nov6,2009	37	Change Dual side printing to Dual side with Single Side command and change its description
		38	Add Dual side with Double Side command and its description
		33,42	Update GUI which support Dual Side with Single Side command
		44	Add restrictions description for dual side printing control

## Table of Contents

<b>1</b>	<b>Operation Environment</b> .....	<b>5</b>
<b>2</b>	<b>How to install the Printer Driver</b> .....	<b>6</b>
2.1	Install by plug and play (Available on USB I/F and Parallel I/F) .....	6
2.1.1	Hardware Wizard .....	6
2.2	Manual Install through "Add Printer" wizard (Serial I/F) .....	10
2.2.1	Add Printer .....	10
2.3	Manual Install through "Add Printer" wizard (LAN) .....	17
2.3.1	Add Printer .....	17
<b>3</b>	<b>How to update the Printer Driver</b> .....	<b>20</b>
3.1	Update Driver .....	20
<b>4</b>	<b>How to uninstall the Printer Driver</b> .....	<b>24</b>
4.1	Uninstall Printer Driver for Windows XP .....	24
4.2	Uninstall Printer Driver for Windows 2000 .....	27
<b>5</b>	<b>Examples for receipt printing</b> .....	<b>31</b>
5.1	Receipt Printing (Single side printing) .....	31
5.1.1	Printer model setting .....	32
5.1.2	Document setting .....	33
5.1.3	Logo setting .....	34
5.1.4	Font setting .....	34
5.1.5	Barcode setting .....	36
5.1.6	Control A Font setting .....	37
5.2	Receipt Printing (Dual side printing with Single Side Command) .....	38
5.3	Receipt Printing (Dual side printing with Double Side Command) .....	39
5.4	Receipt Printing (Dual side printing with Pre-Defined data) .....	40
5.4.1	Printer model setting .....	41
5.4.2	Document setting .....	42
5.5	Print Rendering .....	44
<b>6</b>	<b>Note</b> .....	<b>45</b>
6.1	Log file setting .....	45

# 1 OperationEnvironment

Thisprinterdriverworkswithbelowenvironment.

OS	Windows2000(SP4),WindowsXP(SP1,SP2,SP3)
I/F	Serial(RS232C),USB,Parallel,LAN(Ethernet)

## 2 How to install the Printer Driver

### 2.1 Install by plug and play (Available on USB/Parallel/F) and Parallel/F)

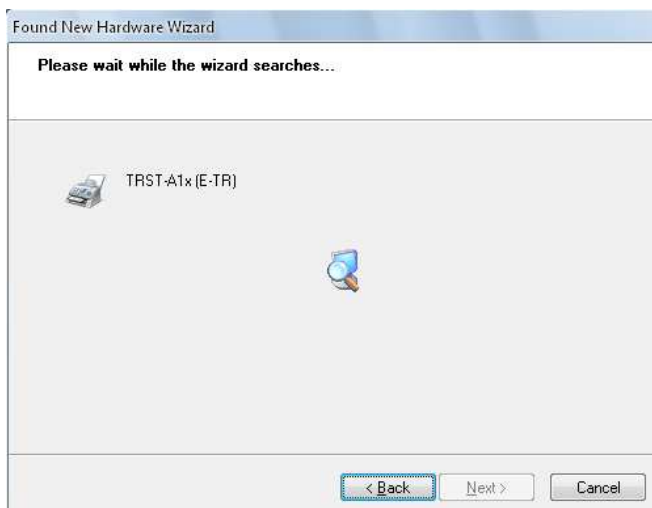
- Set the "Printer Class" of USB Type in the diagnostic settings.
- Connect the printer with switched on and your PC will detect the new printer, after that, go onto 2.1.1 ("Hardware Wizard") and allow the operation to proceed the installation.

#### 2.1.1 Hardware Wizard

Select "Install the software automatically (Recommended)". Click "Next >".



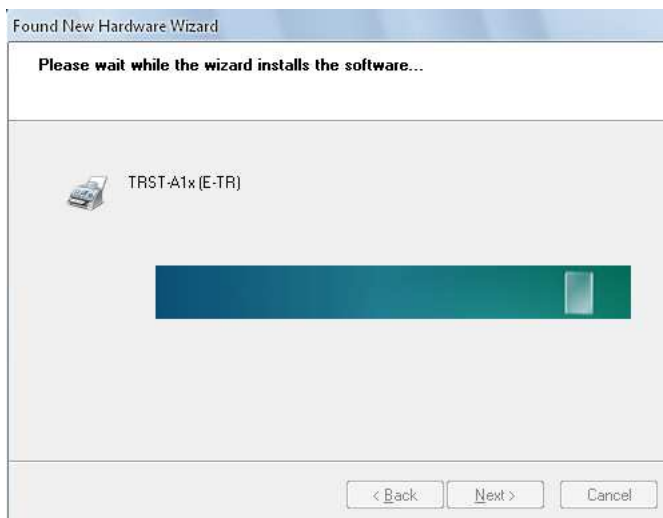
Waiting for hardware wizard to search driver.



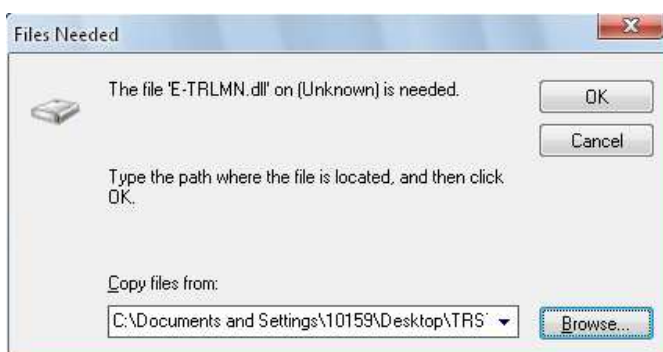
Click "Continue Anyway" to ignore below warning message.



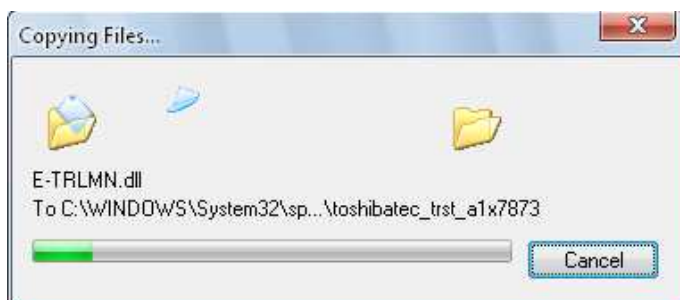
Waiting for hardware wizard to install the software.



Click "Browse..." and select the folder where the printer driver is saved. Click "OK".



Start copying the necessary files.



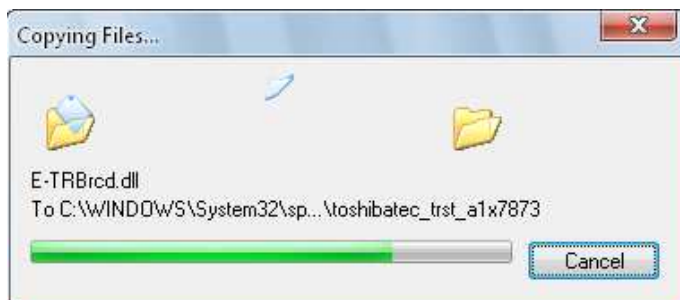
Click "OK" to continue.



Click "Browse..." and select the folder where the printer driver is saved. Click "OK".



Start copying the necessary files.

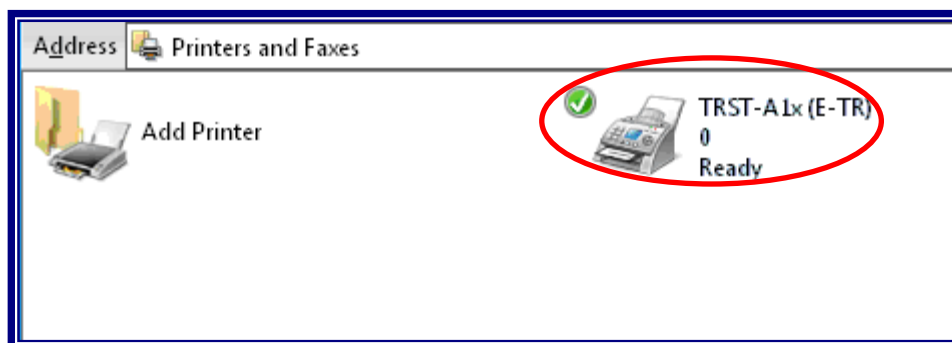




Click "Finish" to complete the installation.



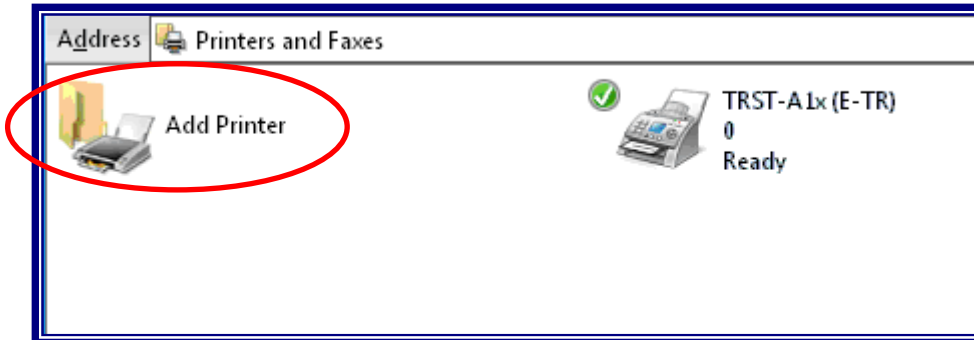
After installation finished, you'll see the "TRST-A 1x(E-TR)" icon in the "Printers and Faxes" folder.



## 2.2 Manual Install through "Add Printer" wizard (Serial/F)

### 2.2.1 Add Printer

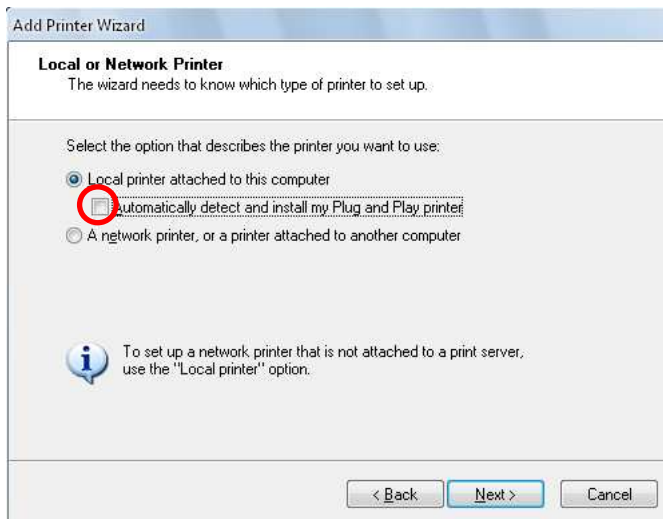
Run "Add Printer" wizard through the "Printers and Faxes" folder.



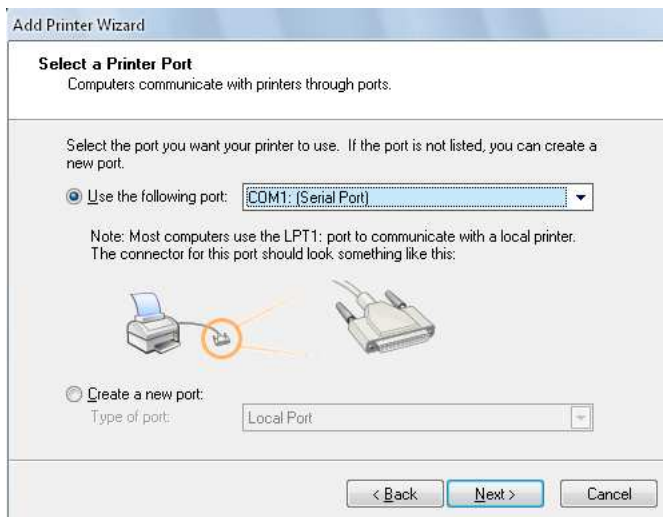
Click "Next >" on the below screen.



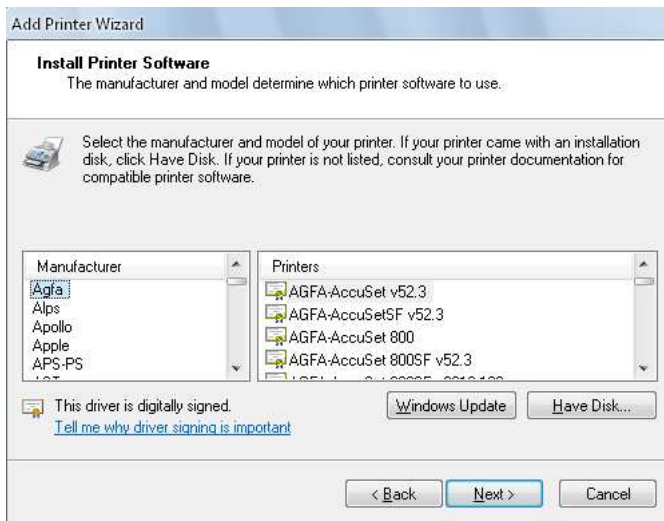
Select "Local printer attached to this computer" and **does not check** "Automatically detect and install my Plug and Play printer". Click "Next >".



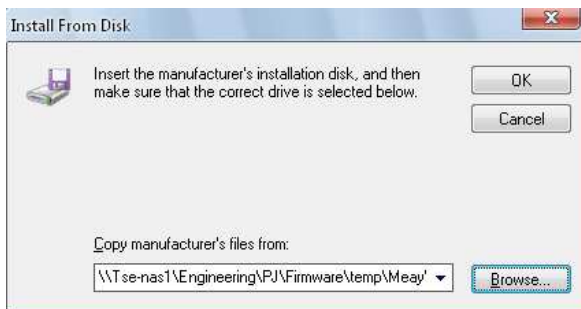
Select the port (I/F) you want to use and click "Next >".  
Below is the example for selecting "COM1" of Serial I/F.



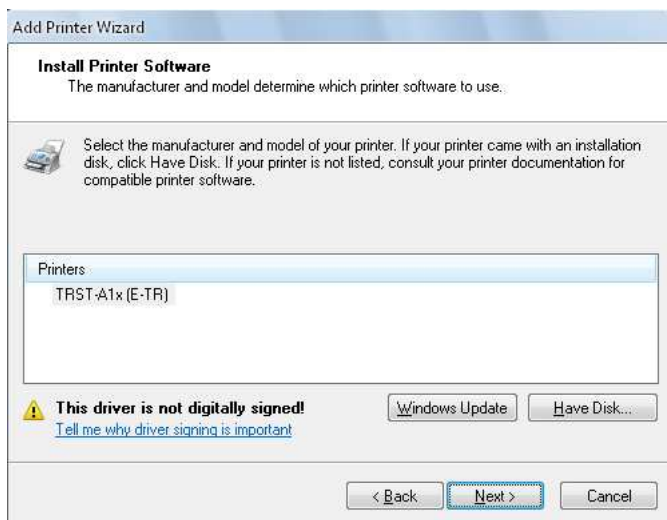
Click "Have Disk..." on below screen.



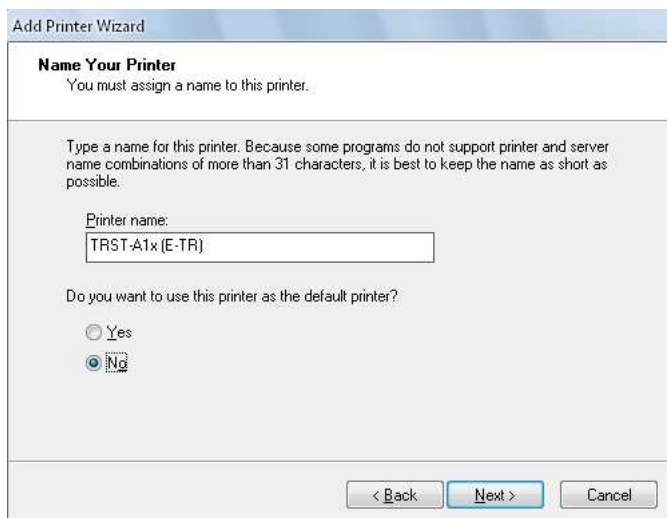
Specify the folder where the printer driver is saved. Click "OK".



Click "Next >" on below screen.



Supply a name for this printer which you want to use. And if you want to use the printer as the default printer, click "Yes". Click "Next >" to continue the installation.



Select "Do not share this printer" and click "Next >".

The screenshot shows the 'Add Printer Wizard' dialog box with the 'Printer Sharing' step selected. The title bar reads 'Add Printer Wizard'. The main heading is 'Printer Sharing' with the subtitle 'You can share this printer with other network users.' Below this, there is explanatory text: 'If you want to share this printer, you must provide a share name. You can use the suggested name or type a new one. The share name will be visible to other network users.' There are two radio button options: 'Do not share this printer' (which is selected) and 'Share name:' followed by an empty text input field. At the bottom of the dialog, there are three buttons: '< Back', 'Next >', and 'Cancel'.

If you want to print a test page, select "Yes". Click "Next >".

The screenshot shows the 'Add Printer Wizard' dialog box with the 'Print Test Page' step selected. The title bar reads 'Add Printer Wizard'. The main heading is 'Print Test Page' with the subtitle 'To confirm that the printer is installed properly, you can print a test page.' Below this, there is a question: 'Do you want to print a test page?'. There are two radio button options: 'Yes' (which is selected) and 'No'. At the bottom of the dialog, there are three buttons: '< Back', 'Next >', and 'Cancel'.

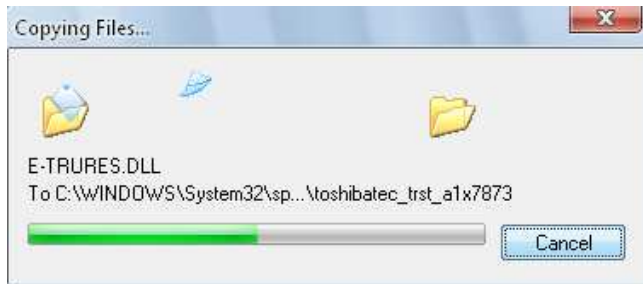
Click "Finish" to start copying the necessary files .



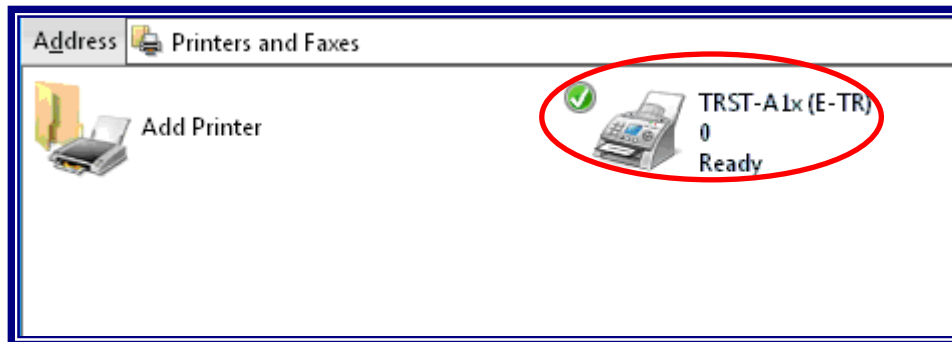
Click "Continue Anyway" to ignore below warning message and to complete the installation.



Start copying the necessary files.



After installation finished, you'll see the "TRST-A 1x(E-TR)" icon in the "Printers and Faxes" folder.

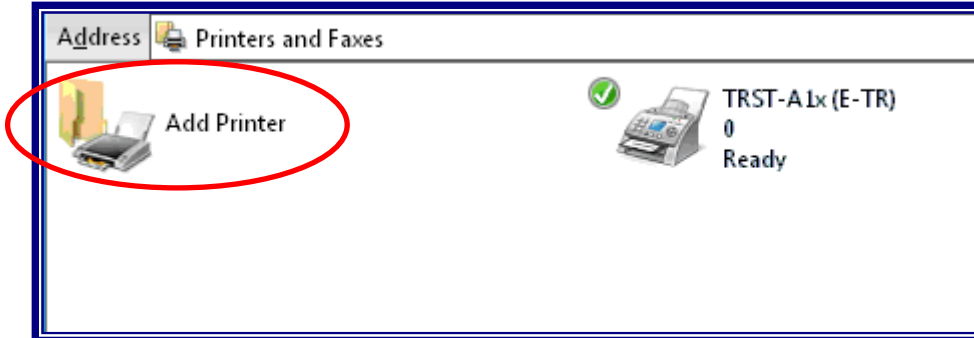




## 2.3 Manual Install through "Add Printer" wizard (LAN)

### 2.3.1 Add Printer

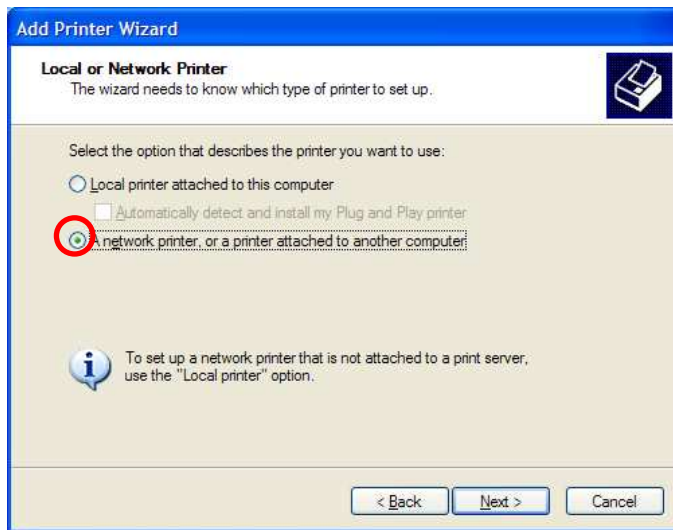
Run "Add Printer" wizard through the "Printers and Faxes" folder.



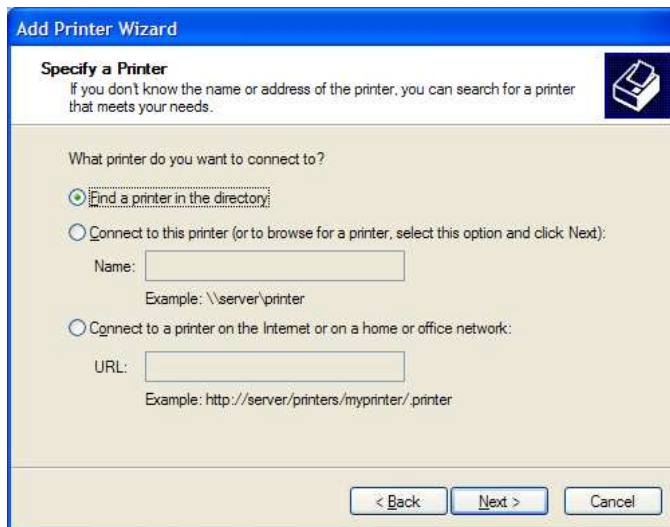
Click "Next >" on the below screen.



Select "A network printer, or a printer attached to another computer". Click "Next>".



Select the option to select a printer connected through the network and click "Next>".



Click "Have Disk..." on below screen.

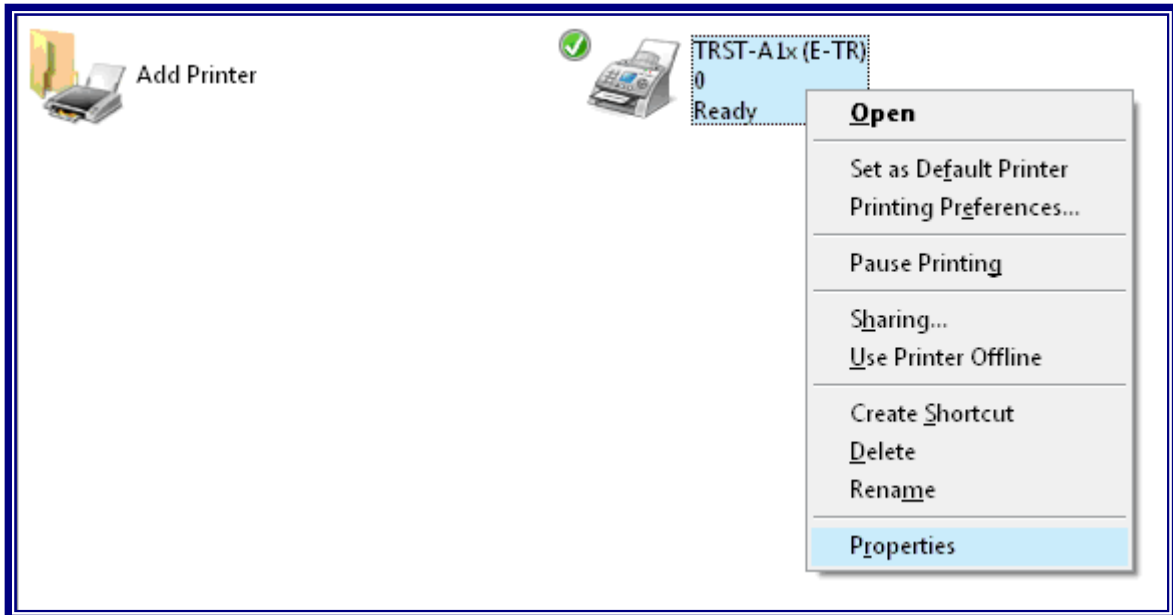


The following procedure is the same as the Serial Interface case.

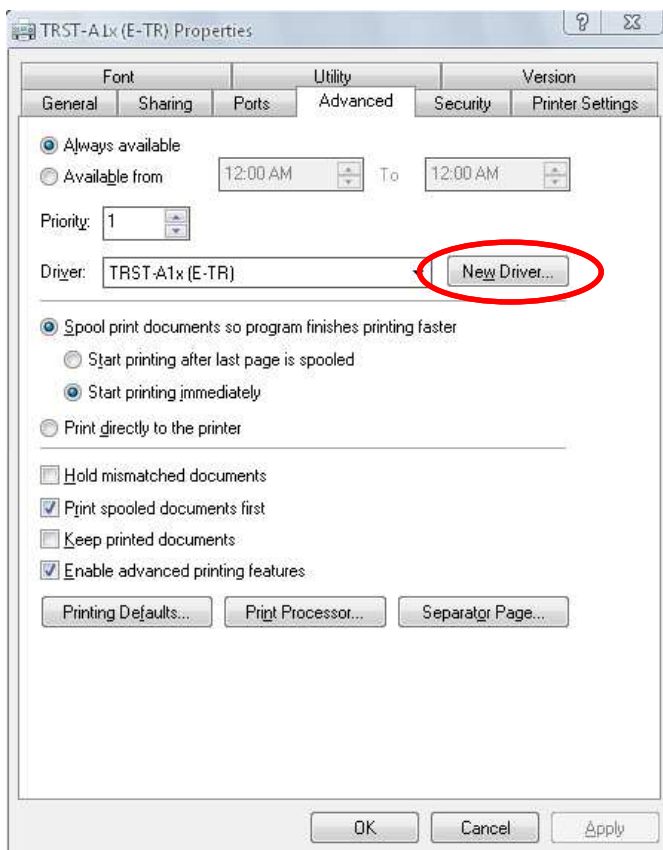
## 3 How to update the Printer Driver

### 3.1 Update Driver

Click right button and select "Properties..." on the "TRST-A1X" icon to open the printer's property.



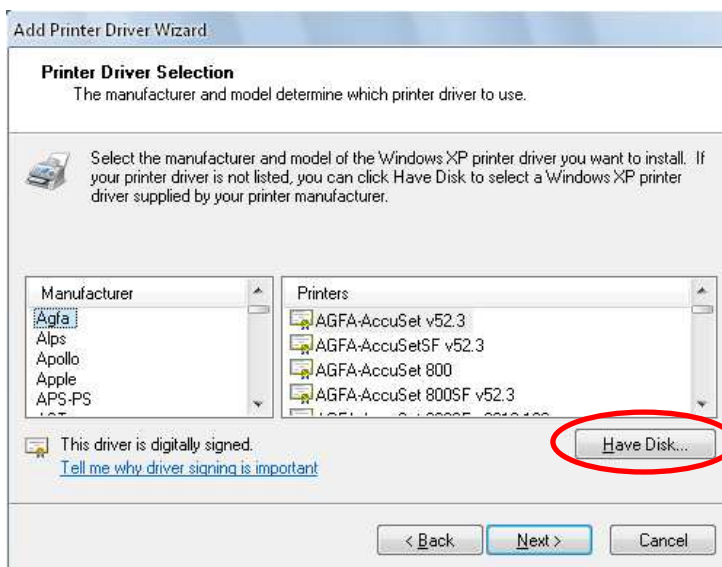
Select **advanced** tab. Click "New Driver" on below screen.



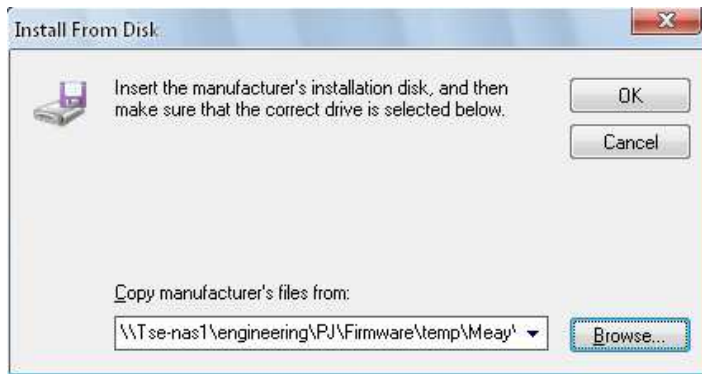
Click "Next >" on below screen.



Click "Have Disk..." on below screen.



Specify the folder where the printer driver is saved. d. Click "OK".



Click "Next >" on below screen.



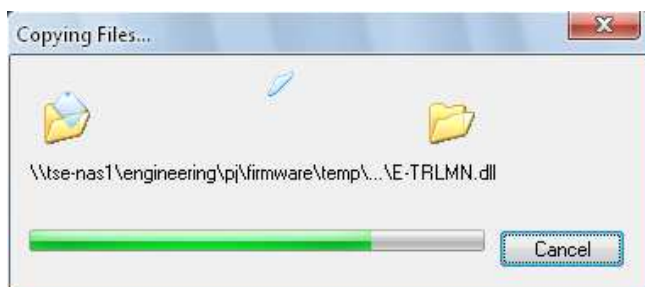
Click "Finish" to completing the driver update.



Click "Continue Anyway" to ignore below warning message.



Start copying the necessary files.

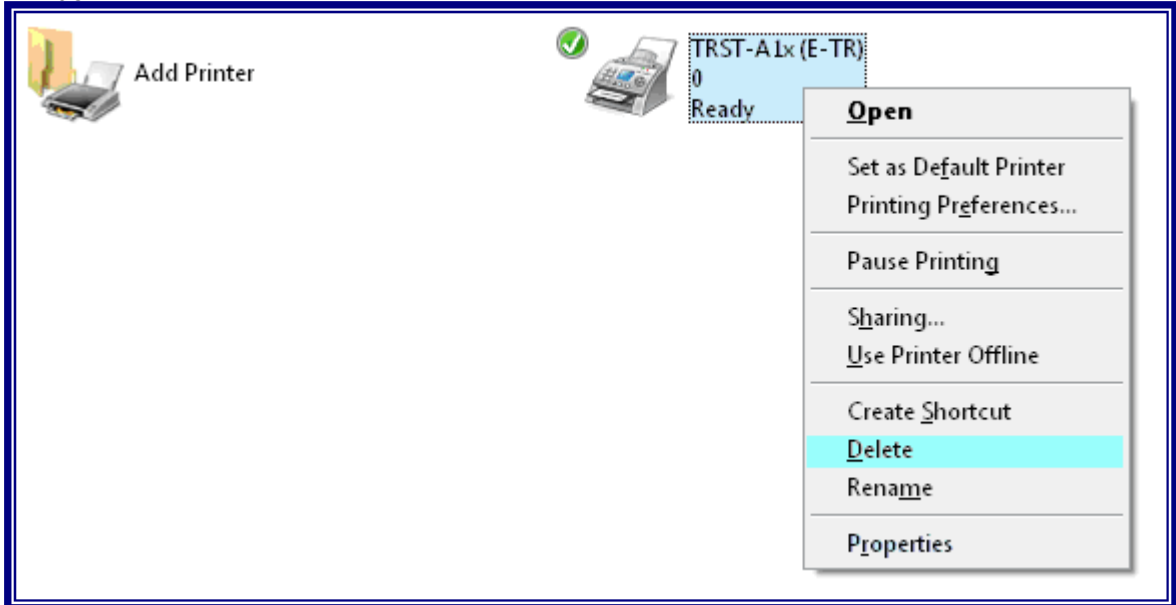


Lastly, **restart** the computer to update the printer driver.

## 4 How to uninstall the Printer Driver

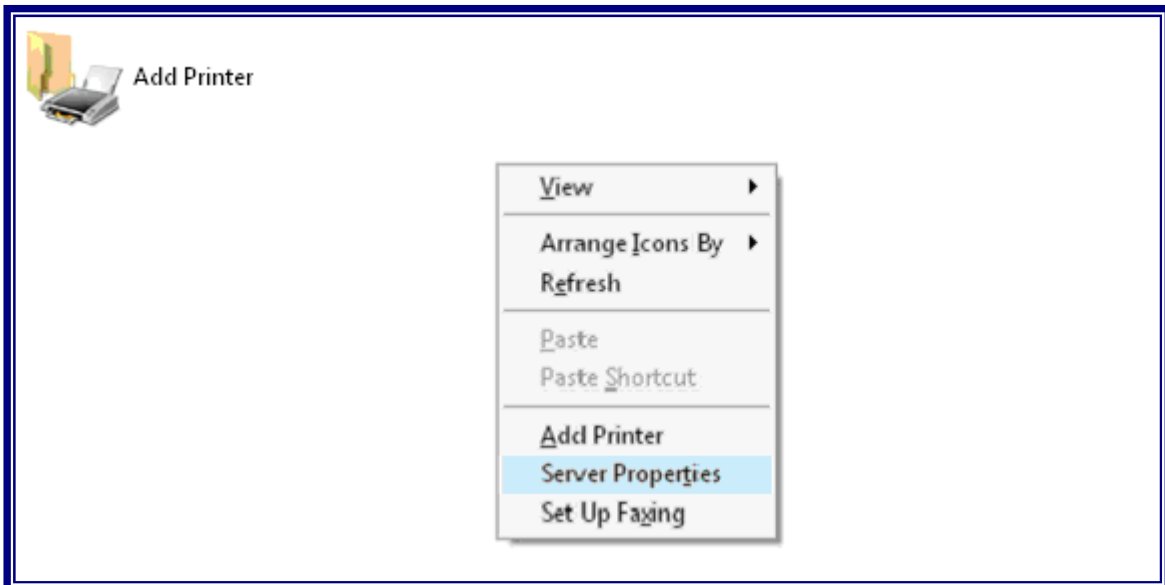
### 4.1 Uninstall Printer Driver for Windows XP

Right-click on the "TRST-A1x(E-TR)" icon in the "Printers and Faxes" folder. Select "Delete" below window.



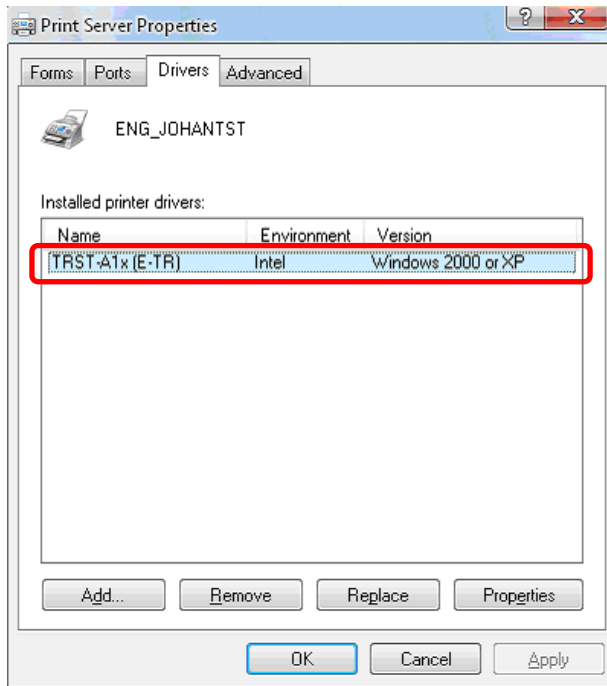
**Restart PC.**

Then right-click to select "Server Properties" on the "Printers and Faxes" folder.

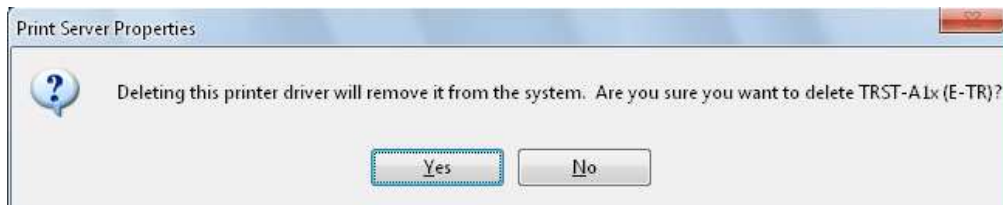




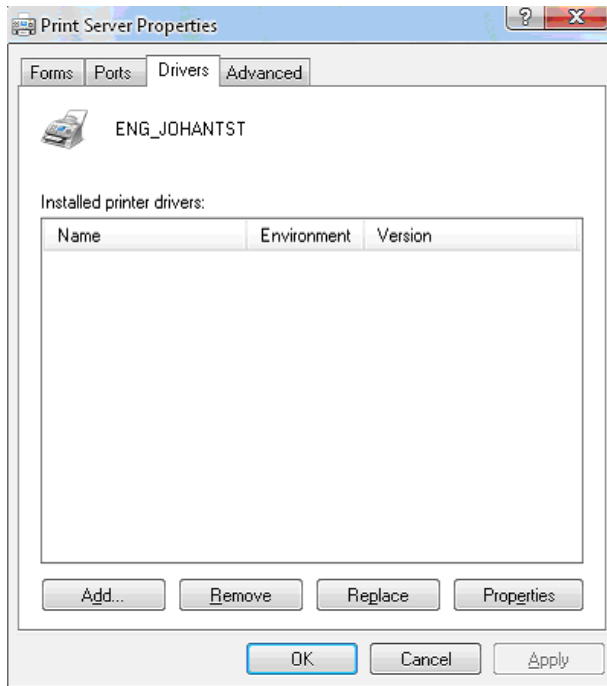
Select "TRST-A1x(E-TR)" on below screen and click "Remove".



Click "Yes" on below dialog to remove the printer driver.

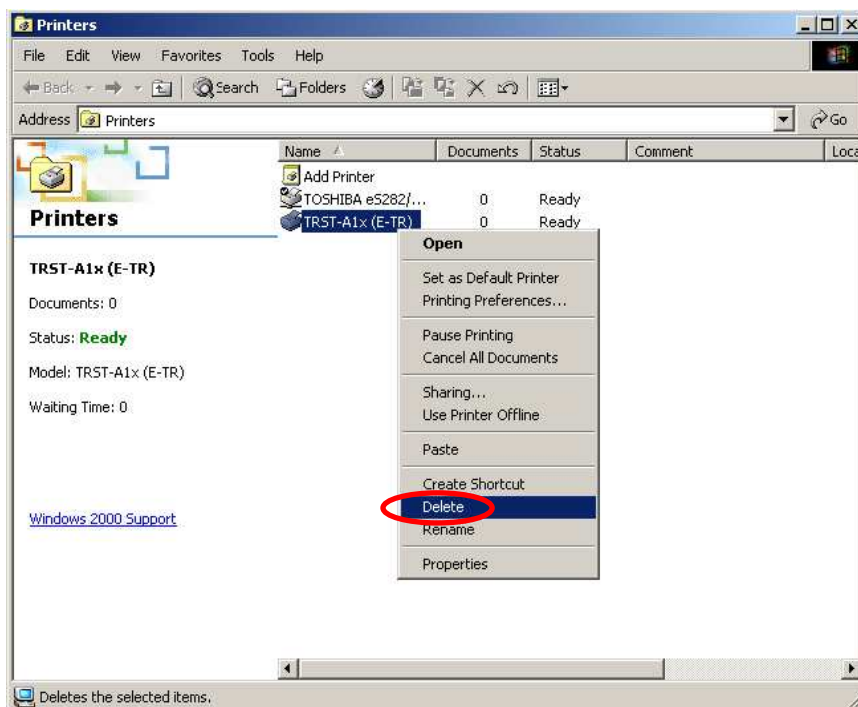


The printer driver for "TRST-A1x(E-TR)" is successfully removed.

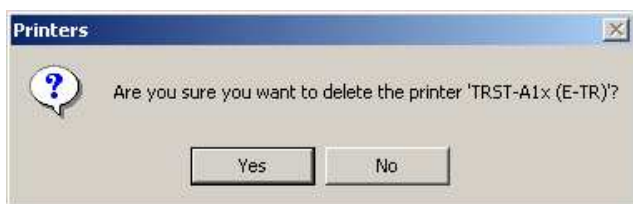


## 4.2 UninstallPrinterDriverforWindows2000

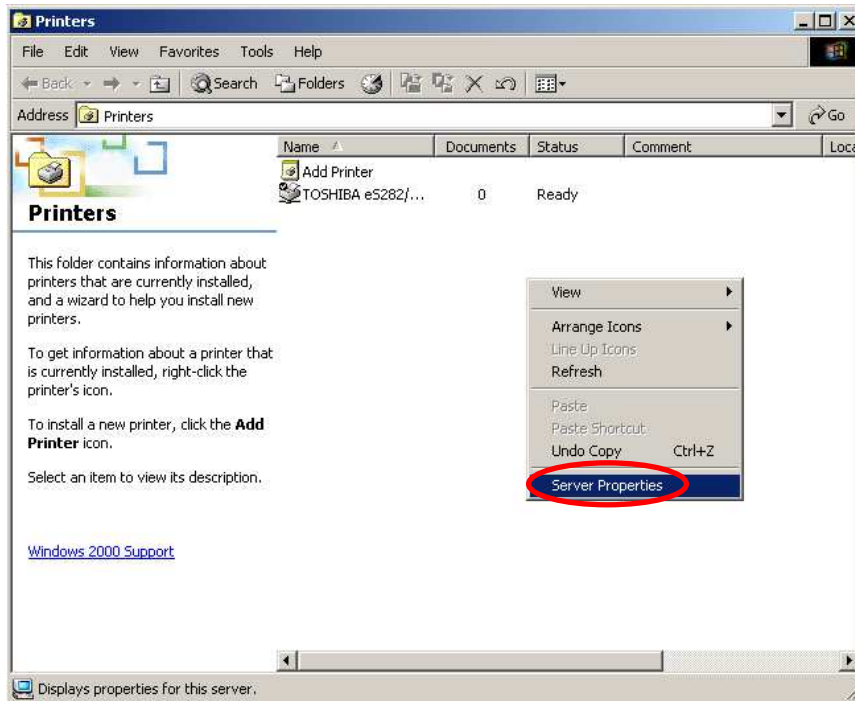
Rightclickonthe"TRST-A1x(E-TR)"iconinthe"P rinters"folder.Select"Delete"belowwindow.



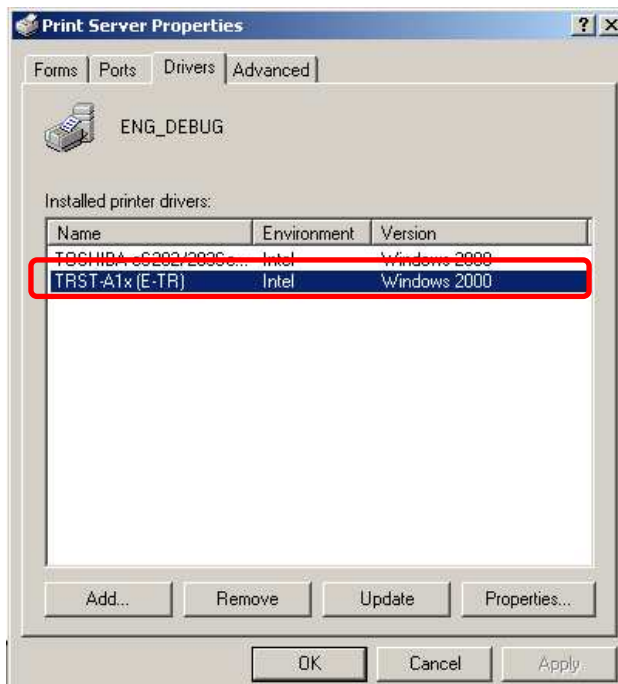
Click"Yes"onbelowdialogtodeletetheprinter" TRST-A1x(E-TR)".



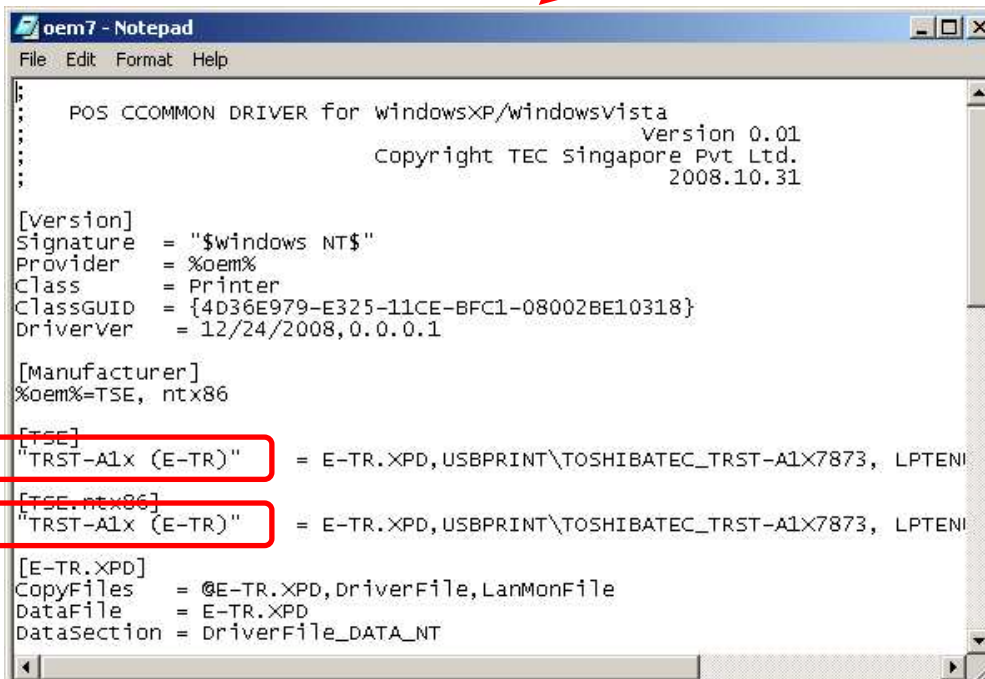
Rightclick to select "Server Properties" on "Printers" folder.



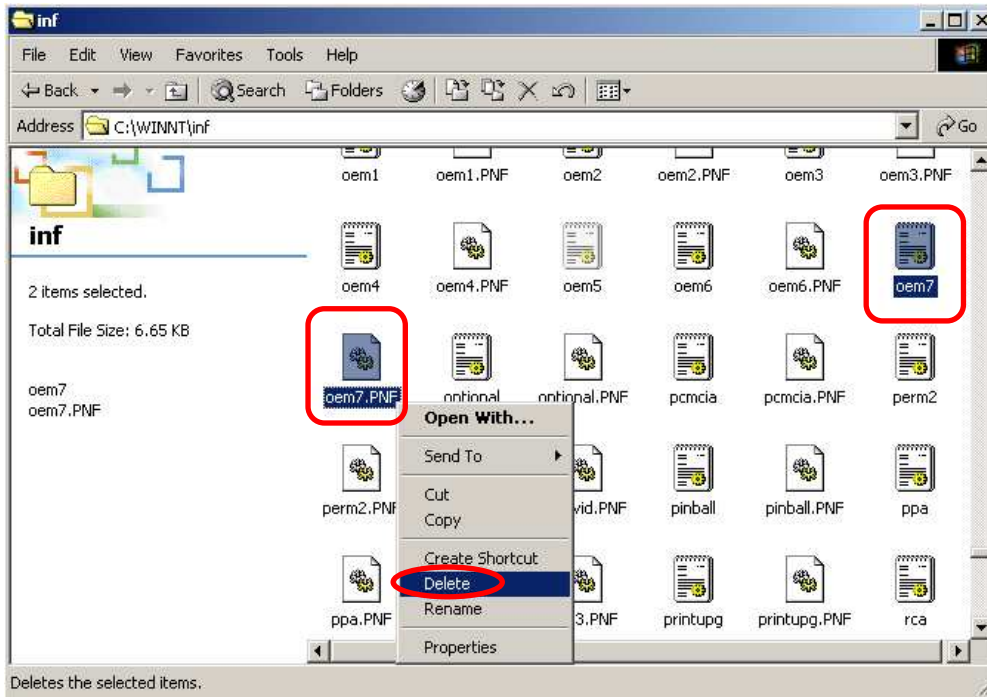
Select "TRST-A1x(E-TR)" on below screen and click "Remove".



Goto "C:\WINDOWS\inf". Open and search the "oem\_Inf" file which with content of "TRST-A1x (E-TR)".

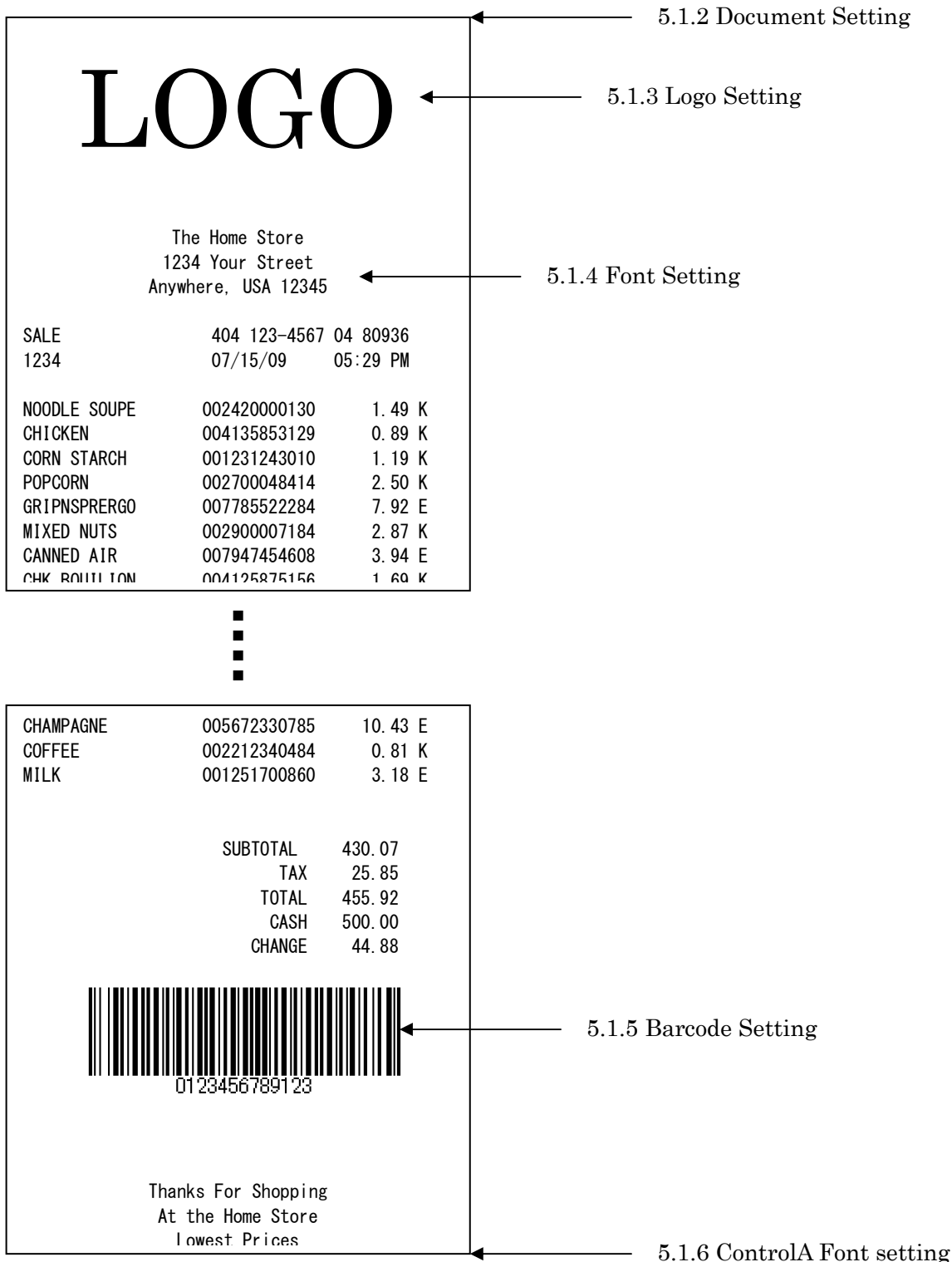


Delete both "oem\_.Inf" and "oem\_.PNF" file which with the content of "TRST-A1x(E-TR)".  
to remove the driver completely.



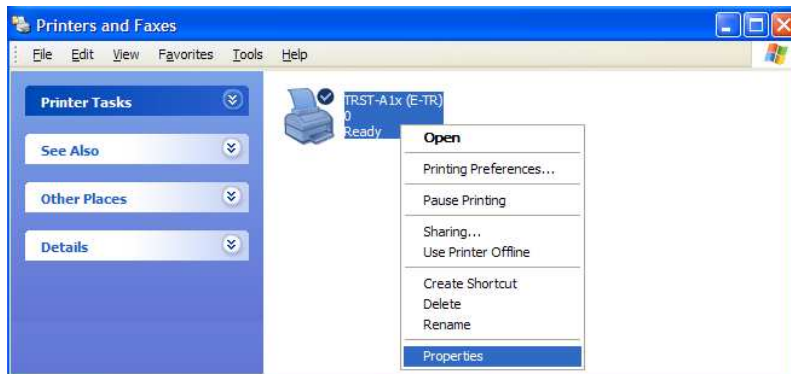
## 5 Examples for receipt printing

### 5.1 Receipt Printing (Single side printing)

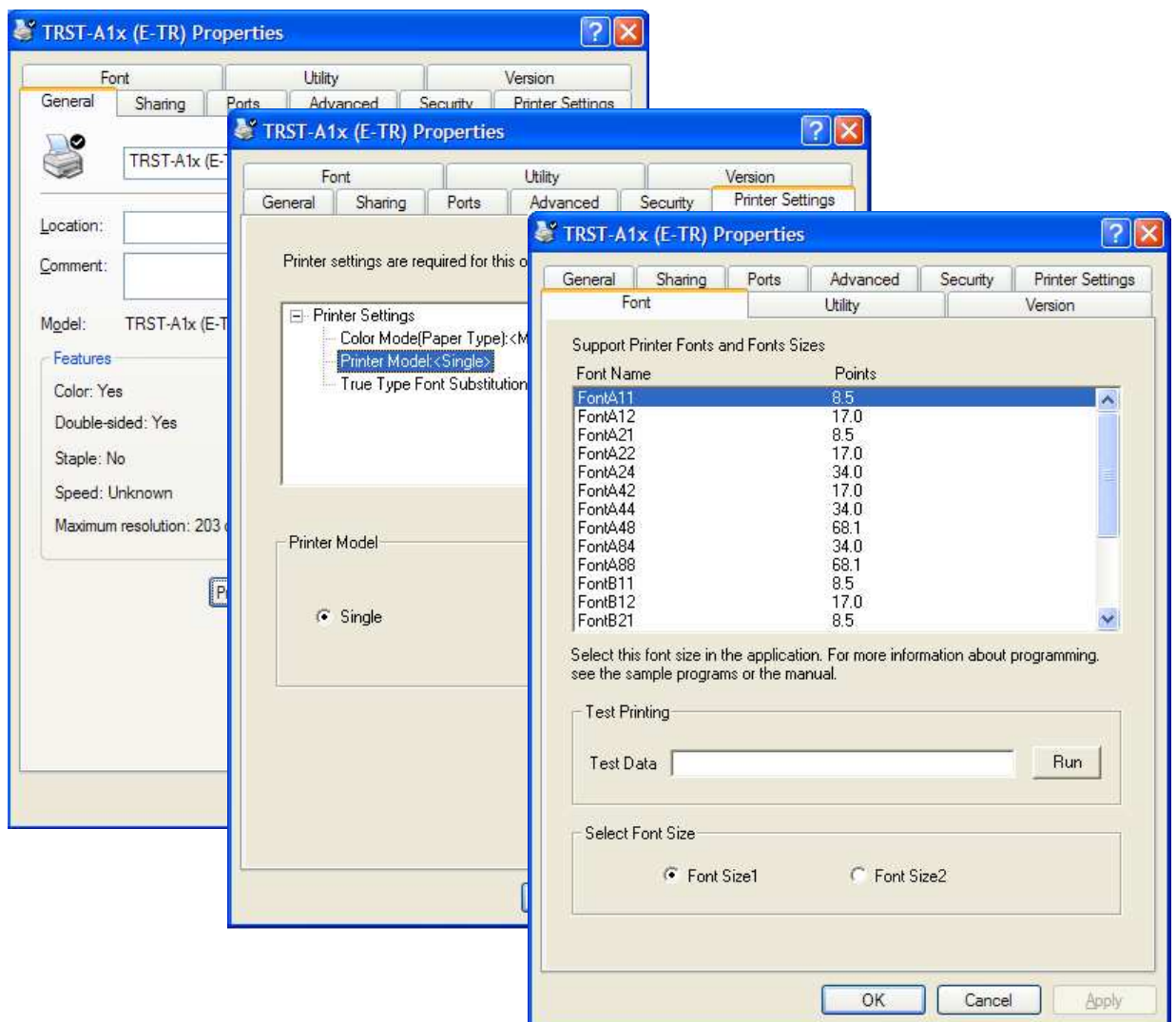


### 5.1.1 Printermodelsetting

- 1) Click right button and select "Properties" on the "TRST-A1X" icon to open the printer's property.



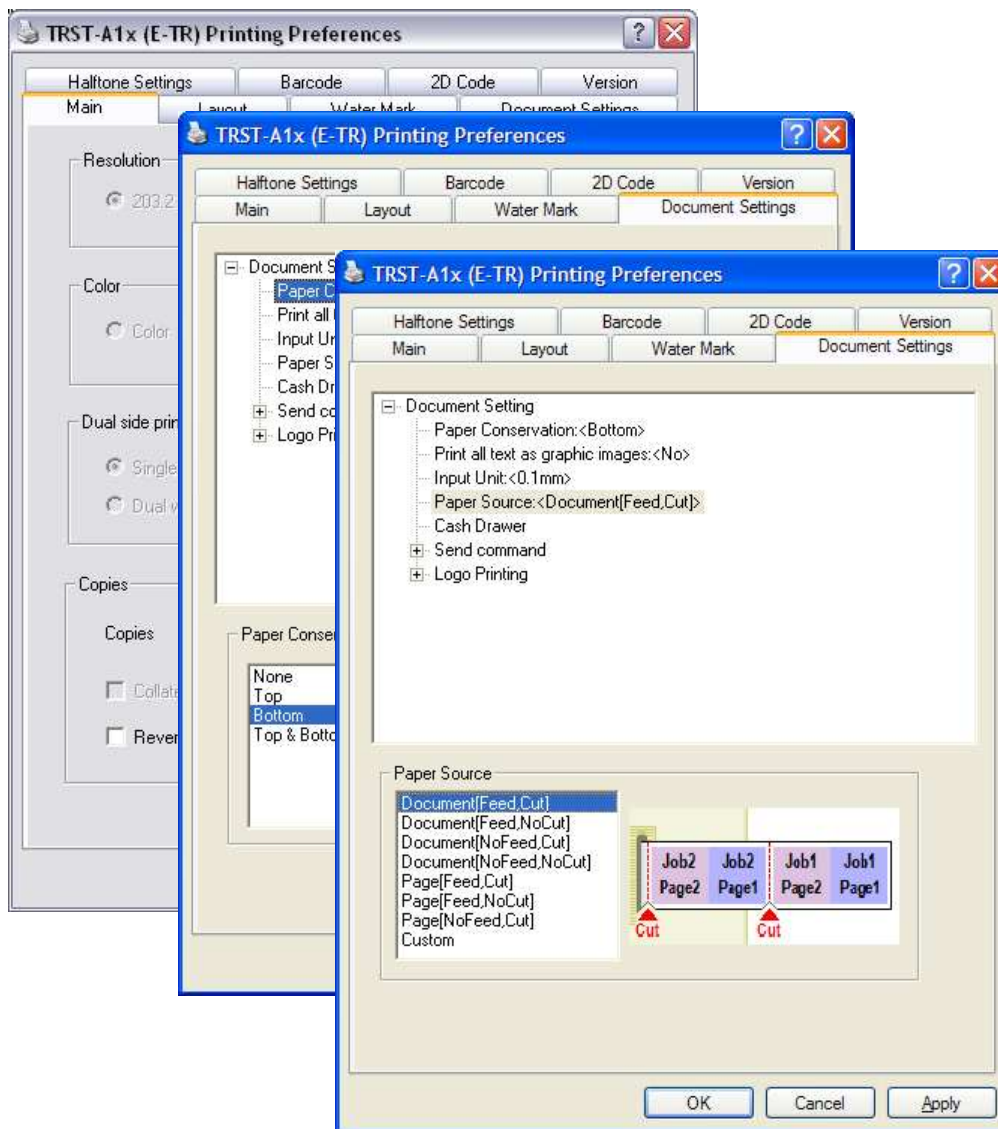
- 2) Click on **Printer Settings** tab. Select "Single" on the "Printer Model". Click "OK".  
The printer driver realizes that 1<sup>ST</sup> printer is connected.
- 3) Click on **Font** tab. Select the Font Size you want. Click "OK". Font size has to correspond to the printer font setting.





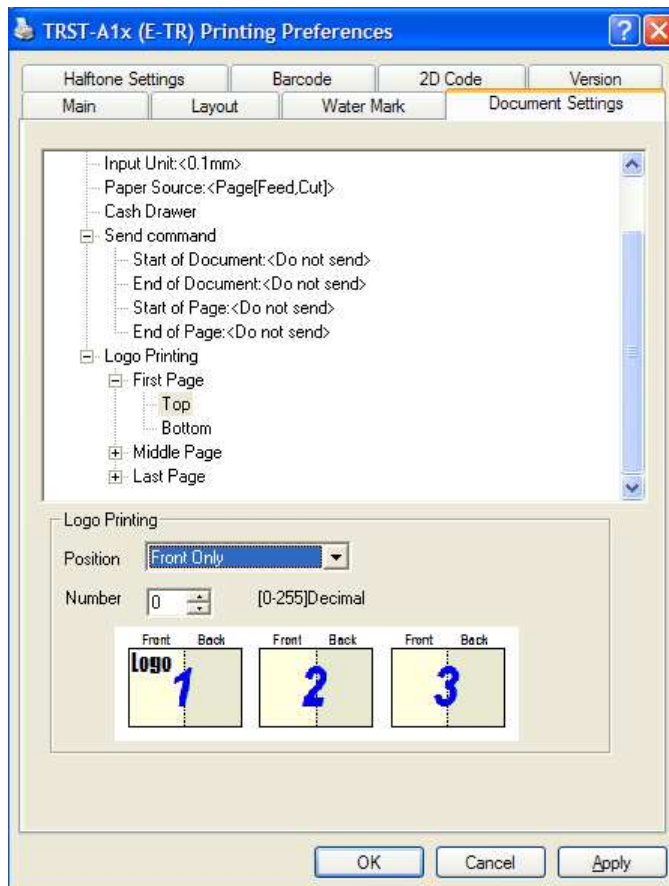
### 5.1.2 Documentsetting

- 1) In thereceiptprinting,thepaperlengthdoesn't matter.Sinceitdependsonthenumberofitems onareceipt,areceiptlengthisnotspecified.Selectthespecifiedpapersize([58mmx297mm] or[80mmx297mm])thathasthepaperwidthyoudemand.
- 2) Clickrightbuttonandselect"Properties"onthetrayiconof"TRST-A1X"toopentheprinter'sproperty (Sameas"PrinterModelSetting),andclickon"PrintingPreference"button.  
Clickon **Maintab**.Select **"single"**onDualsideprintingControl.  
Clickon **DocumentSettings** tab.Select"Bottom"onthe"PaperConservation". Click"OK".  
Alsoselect"Document[Feed,Cut]"onthe"PaperSource".Click"OK".  
Accordingtothesettingofthe"PaperConservation"andthe"PaperSource",thereceiptiscut attheproperposition(endofreceipt)automatically.



### 5.1.3 Logosetting

- 1) Click on **Document Settings** tab. Select "First Page-Top" on the "Logo Printing" to specify the logo position on the receipt. Select "Front Only" at the "Position" combo-box, also select the logo number at the "Number" combo box to specify the logo. The logo has to be downloaded by the TRST-A1x commander before this setting. Click "OK".



### 5.1.4 Fontsetting

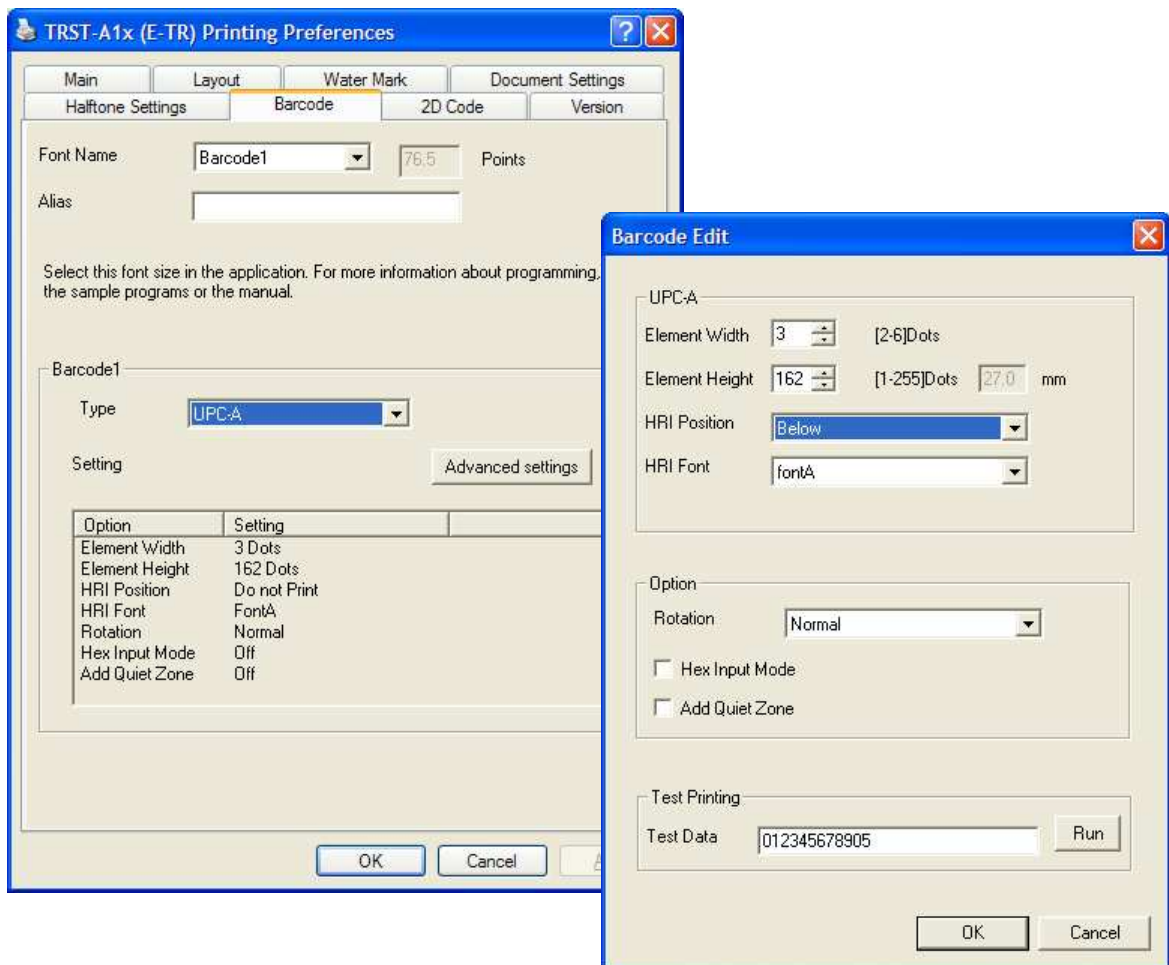
- 1) Select the printer font and send the character data to the printer. Following are printer fonts that can be selected by an application. The sizes of the fonts are fixed.

Font1				Font2			
Font Name	Point	Font Name	Point	Font Name	Point	Font Name	Point
FontA11	8.5	FontB11	8.5	FontA11	9.9	FontB11	9.9
FontA12	17.0	FontB12	17.0	FontA12	19.9	FontB12	19.9
FontA21	8.5	FontB21	8.5	FontA21	9.9	FontB21	9.9
FontA22	17.0	FontB22	17.0	FontA22	19.9	FontB22	19.9
FontA24	34.0	FontB24	34.0	FontA24	39.7	FontB24	39.7
FontA42	17.0	FontB42	17.0	FontA42	19.9	FontB42	19.9
FontA44	34.0	FontB44	34.0	FontA44	39.7	FontB44	39.7
FontA48	68.1	FontB48	68.1	FontA48	79.4	FontB48	79.4
FontA84	34.0	FontB84	34.0	FontA84	39.7	FontB84	39.7
FontA88	68.1	FontB88	68.1	FontA88	79.4	FontB88	79.4



### 5.1.5 Barcodesetting

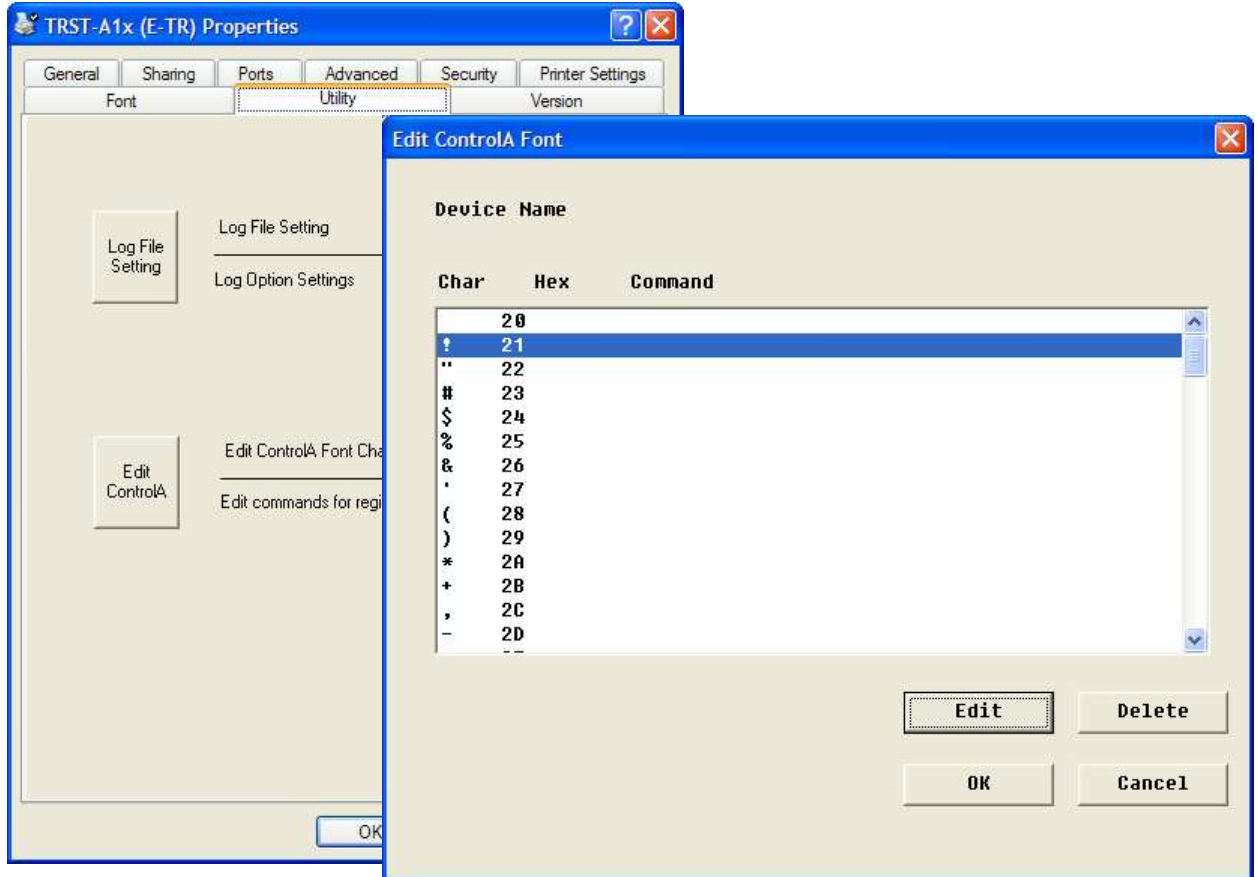
- 1) Click right button and select "Properties" on the "TRST-A1X" icon to open the printer's property (Same as "Printer Model Setting"), and click on "Printing Preference" button. Click on **Barcode** tab. Select "Barcode1" at the Font Name combo-box, and select the barcode type for Barcode1. Press "Advanced settings" button and specify the barcode attributes (width, height and HRI). Click "OK".



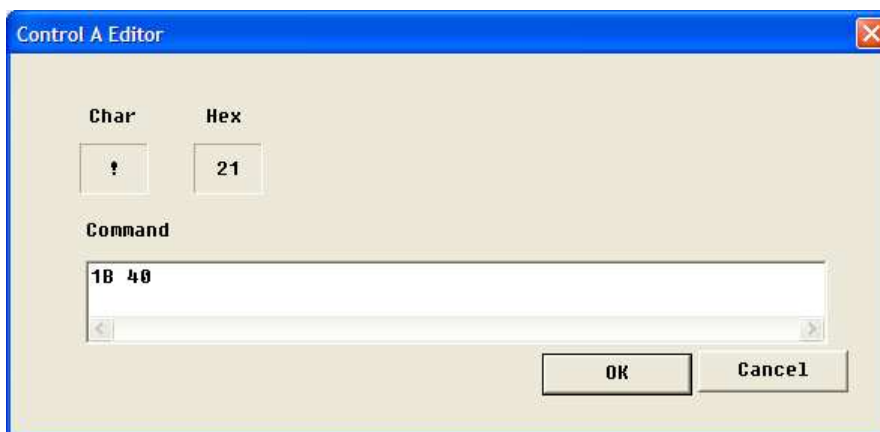
- 1) Select the Barcode1 font and send the numerical character data (e.g. "01234567890123") to the printer. Refer to "5.4 [Print Rendering](#)" in detail.

### 5.1.6 ControlAFontsetting

- 2) Click right button and select "Properties" on the "TRST-A1X" icon to open the printer's property (Same as "Printer Model Setting"), and click on "Edit ControlA" button on "Utility" Tab.
- 3) Select character "!" (0x21) and click on "Edit" button.



- 4) Input 1B 40 (Initialize the printer command) and click on OK.



- 5) Select the ControlA font and send "!" character to the printer. The printer will be initialized at the end of the receipt. Refer to "5.4 [Print Rendering](#)" in detail.

## 5.2 Receipt Printing (Dual Side Printing with Single Side Command)

Front Side

# LOGO

The Home Store  
1234 Your Street  
Anywhere, USA 12345


SALE	404 123-4567	04 80936	
1234	07/15/09	05:29 PM	

NOODLE SOUPE	002420000130	1.49 K
CHICKEN	004135853129	0.89 K
CORN STARCH	001231243010	1.19 K
POPCORN	002700048414	2.50 K
GRIPNSPRERGO	007785522284	7.92 E
MIXED NUTS	002900007184	2.87 K
CANNED AIR	007947454608	3.94 E
CHK BOUILION	004125875156	1.69 K
CHICKEN	004135853129	0.89 K
CORN STARCH	001231243010	1.19 K
POPCORN	002700048414	2.50 K
GRIPNSPRERGO	007785522284	7.92 E
MIXED NUTS	002900007184	2.87 K
CANNED AIR	007947454608	3.94 E
CHK BOUILION	004125875156	1.69 K
CHK BOUILION	004125875158	1.89 K
NOODLE SOUPE	002420000130	1.49 K
CHICKEN	004135853129	0.89 K
CORN STARCH	001231243010	1.19 K
POPCORN	002700048414	2.50 K
GRIPNSPRERGO	004125875158	1.89 K

Back Side

POPCORN	002700048414	2.50 K
GRIPNSPRERGO	007785522284	7.92 E
MIXED NUTS	002900007184	2.87 K
CANNED AIR	007947454608	3.94 E
CHK BOUILION	004125875156	1.69 K
CHICKEN	004135853129	0.89 K
CORN STARCH	001231243010	1.19 K
POPCORN	002700048414	2.50 K
GRIPNSPRERGO	007785522284	7.92 E
CHAMPAGNE	005672330785	10.43 E
COFFEE	002212340484	0.81 K
MILK	001251700860	3.18 E

SUBTOTAL	430.07
TAX	25.85
TOTAL	455.92
CASH	500.00
CHANGE	44.88



0123456789123

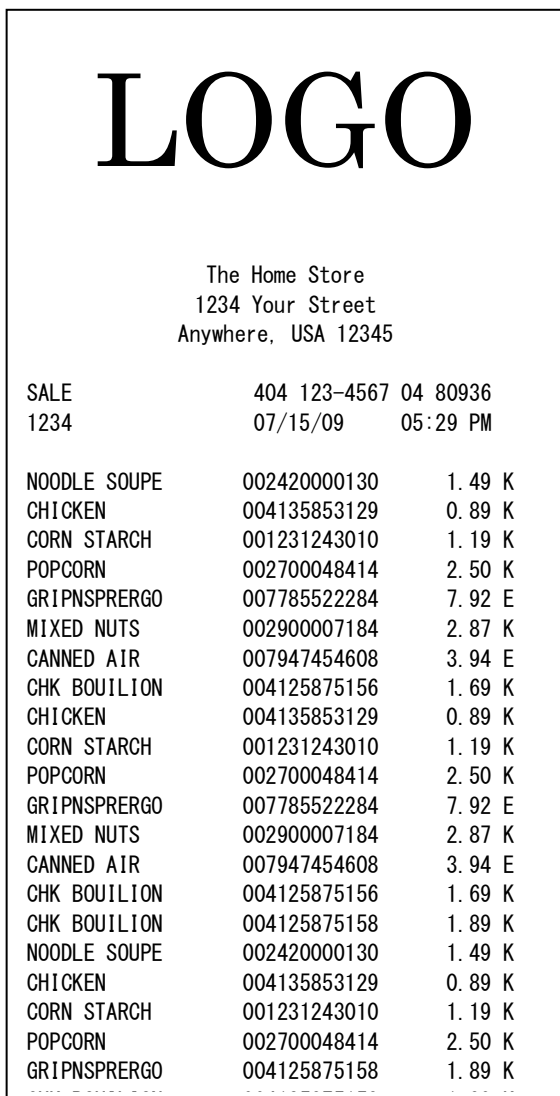
Thanks For Shopping

To print the receipt (shown in 5.1) on dual sides as "Dual Side Printing Control" in printing preference. Other settings have to be same as the single receipt. Please take note that for this printing mode, the printing result will be half on front page and half

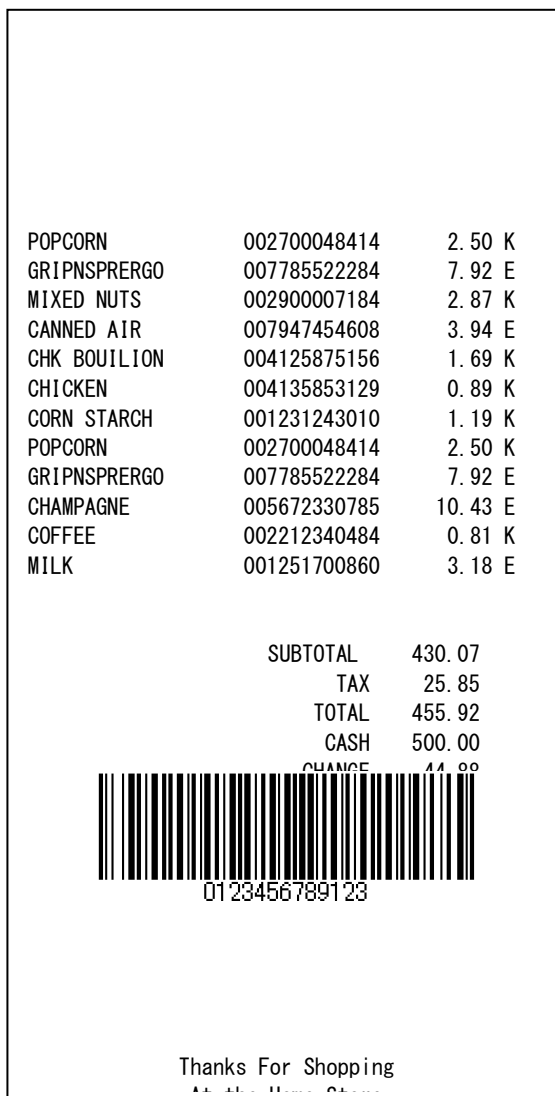
above, select the "Dualw/Single Side Cmd" of setting of the printer driver. Printing mentioned above. Documents source should be in single page and the on back page.

### 5.3 ReceiptPrinting(DualsideprintingwithDoubleSideCommand)

1<sup>st</sup> page of document on Front Side



2<sup>nd</sup> page of document on Back Side

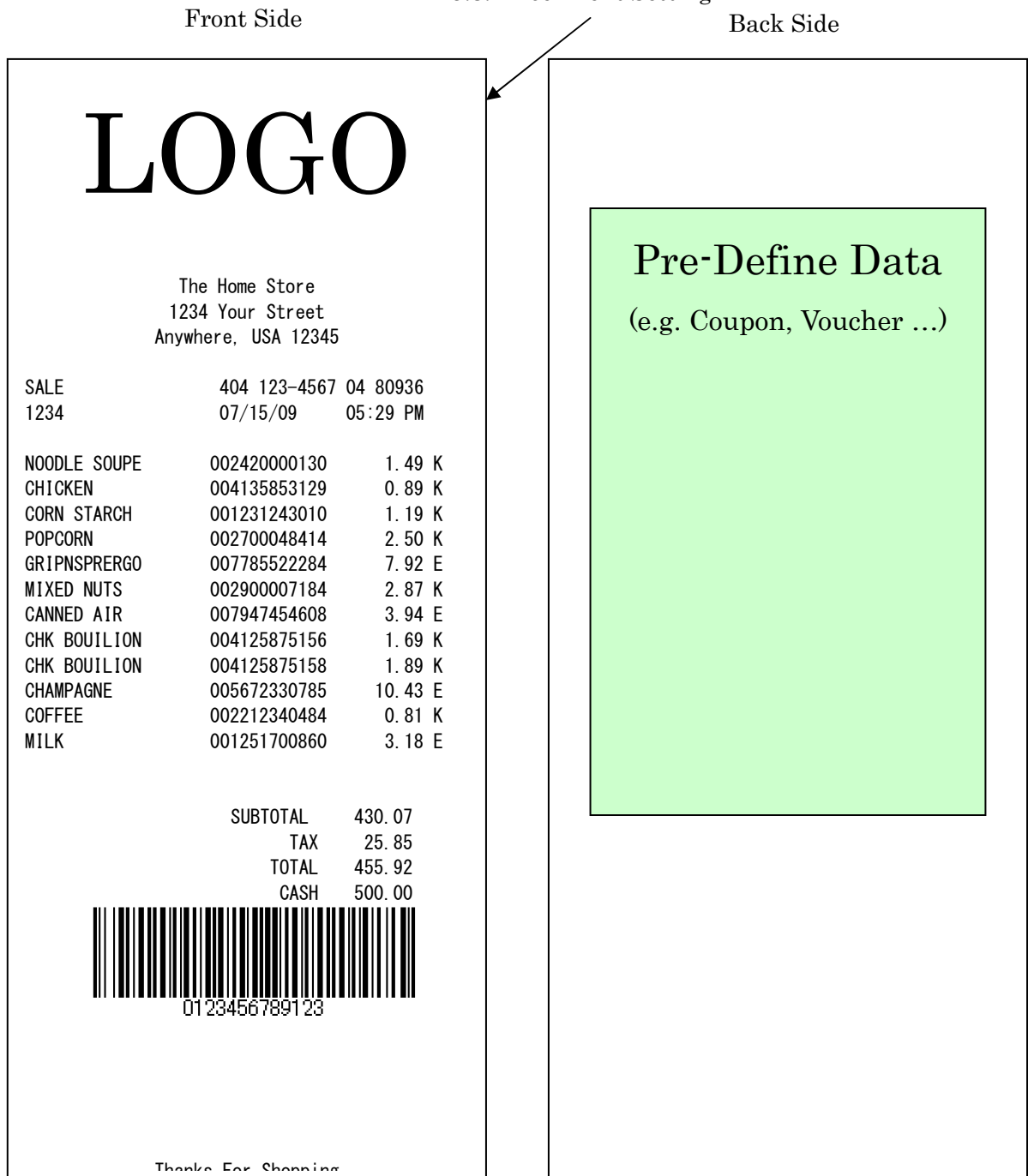


To print the above receipt (2 pages document) on double side, select the "Dualw/DoubleSideCmd" of "DualSidePrintingControl" in printing preferences. Other settings have to be same as the single receipt. Please take note that for this printing mode, the printing result will be 1<sup>st</sup> page on front page and 2<sup>nd</sup> page on back page.

On double side, select the "Dualw/DoubleSideCmd" in printing preferences of the printer driver. Other settings have to be same as the single receipt mentioned above. Document source should be in 2 pages and the printing result will be 1<sup>st</sup> page on front page and 2<sup>nd</sup> page on back page.

## 5.4 ReceiptPrinting(DualsideprintingwithPre-Defineddata)

### 5.3.2 Document Setting



This example shows only the different settings compared to the "Single Receipt Printing". Other settings not described are the same as the settings of the "Single Receipt Printing".

To print the pre-defined data on the back side, the pre-defined data has to be downloaded to the printer in advance.

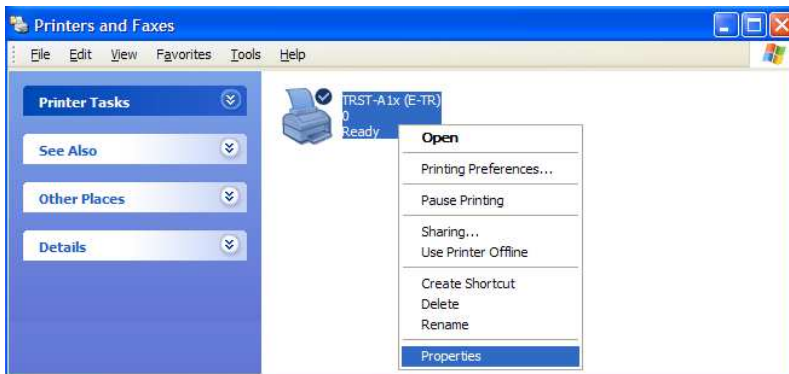
are the "Single Receipt Printing". Other settings not described are the same as the settings of the "Single Receipt Printing".

To print the pre-defined data on the back side, the pre-defined data has to be downloaded to the printer in advance.

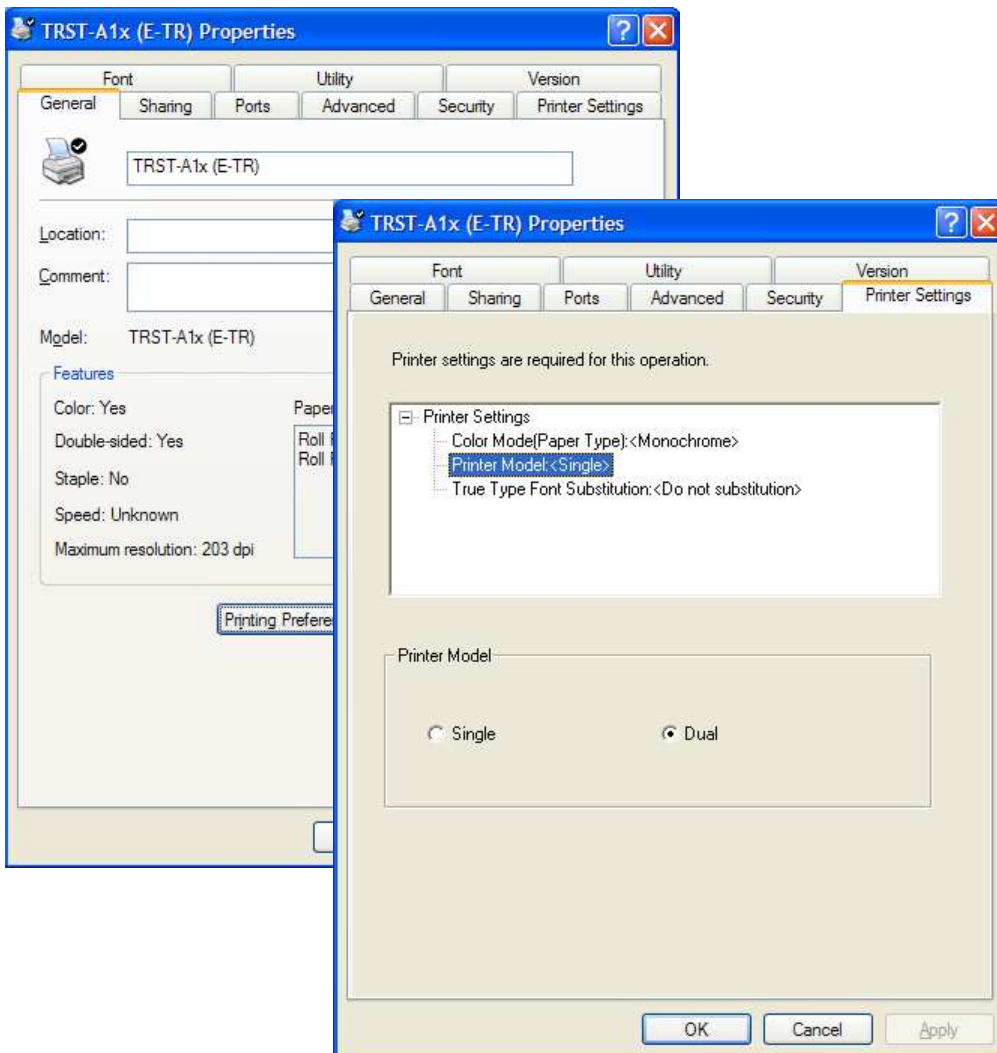


### 5.4.1 Printermodelsetting

- 1) Click right button and select "Properties" on the "TRST-A1X" icon to open the printer's property.

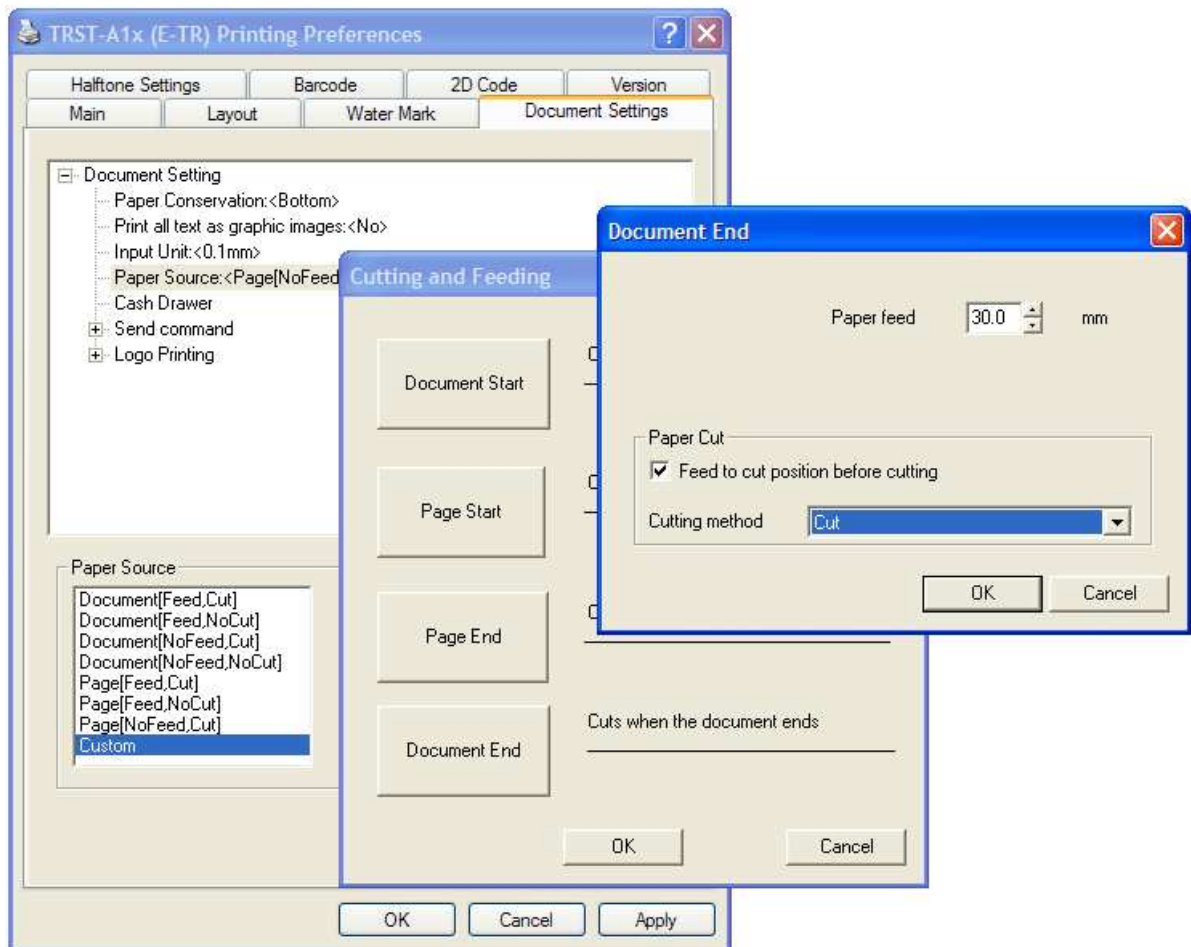


- 2) Click on **PrinterSettings** tab. Select "Dual" on the "PrinterModel". Click "OK".  
The printer driver realizes that 1<sup>ST</sup> printer is connected.



### 5.4.2 Documentsetting

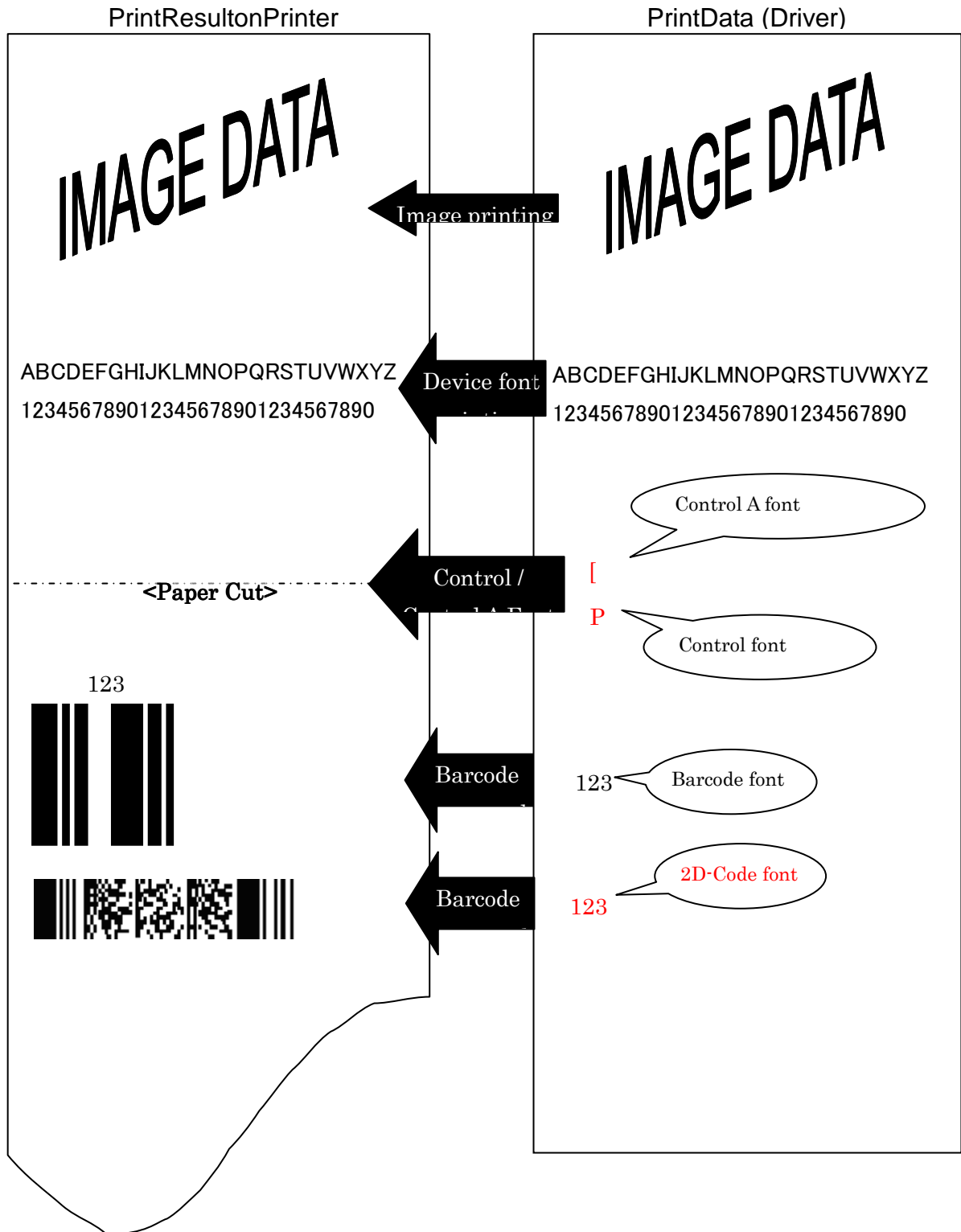
- 1) Click right button and select "Properties" on the "TRST-A1X" icon to open the printer's property (Same as "Printer Model Setting"), and click on "Printing Preference" button.  
Click on **Document Settings** tab. Select "Custom" on the "Paper Source". Click "Document End" button.  
Set the "Paper feed" to 30mm, Click on "**Feed to cut position before cutting**" and select "**Cut**" at the Cutting method combo-box. Click "OK".



2) Click on **Main** tab. Select "Dual with Pre-Defined Data" on Dual side printing Control.



## 5.5 PrintRendering



## 6 Note

### 6.1 Logfilesetting

This function is for the analysis of the printer and the printer driver issues. Therefore please don't change this setting normally. It would slow down the performance.

### 6.2 Restrictions

Following are some restrictions to be noted for dual side printing control using the driver:

	Single	Dualw/Single SideCmd	Dualw/Double SideCmd	Dualw/PredefinedData
Logo Printing	△*1	○	△*2	△*2
Top/Bottom message	X	○	△*2	△*2
Document/Page mode	○	○	△*3	△*3

\*1: User can either select "None" or "Front Only" for logo printing

\*2: If there is no backside data, the logo/message on backside will not be printed

\*3: Only Page Mode available