



eS8 User's Manual

*Rackmount 2U 8 bay
eSATA Port Multiplier Enclosure*

Version 1.0
September 2011

Table of contents

Features	P1
Specifications	P1
Overview	P1
Package Checklist	P2
Panel Layout	P2
Buildup Procedure	P3
About Port Multiplier Solution	P6

Features

- Support SATA (3/6 Gbps) HDD
- 2 × eSATA interfaces for easy connection
- Backplane design for up to 8 removable hard drive trays
- Fan cooler for self-contained ventilation
- Individual key lock of each HDD tray for physical security
- LED indicators for power and activity on each HDD tray
- Environmental monitoring with Fan/Temperature LEDs and mutable buzzer alarm.

Specifications

Host Interface	Two eSATA connectors
HDD Interface	SATA 3.0/6.0 Gbps
Data Transfer Rate	SATA up to 6 Gbps (dual cables)
LED Display	White - Power on indicator Blue - Busy (HDD Accessing) indicator
LED Display for Environmental Monitoring	FAN normal – green; fail – red (too slow rpm or stop) TEMP normal – green; over 55°C – red
Dimension	(W): 48.2 cm (H): 8.85 cm (D): 45.6 cm
Material	Heavy-duty cold-rolled steel
Power Supply	400W Single PSU Input: 90 – 230 VAC, 50 - 60 Hz Output: +5V and +12V DC
Cooling	Two set of 6 x 6 x 2.5 cm hot-swappable fans
O.S. support	OS Independent

The eSATA ports on host computer should support Port Multiplier.

Overview

i3's eS8, eSATA Port Multiplier 2U 8-bay SATA rackmount JBOD solution, is designed for direct connection to Host eSATA ports with dual high bandwidth eSATA cables for up to 8 SATA hard drives. eS8 can be configured with RAID level while connected to eSATA RAID HBA. This high performance and cost-effective 2U 8-bay eSATA Port Multiplier enclosure is the most popular solution for external drive expansion.

Package Checklist

Before installing this unit, please verify that package contains the following items.



A. Enclosure × 1



B. HDD tray (installed in the chassis) × 8



C. Power cord × 1



D. User Manual CD × 1



E. HDD mounting screw × 32



F. Key for HDD tray × 2



G. eSATA cable × 2

Notify your sales representative if any of the above items are missing or damaged.

Panel Layout



- 1. HDD power LED
- 2. HDD status LED

3. Mute button
Reset for buzzer beeping
4. Fan status LED
Normal – green
Failure – red (too slow RPM or stop)
5. Temperature LED
Normal – green
Over 55°C - red
6. Power cord receptacle
7. eSATA connectors for connection to Host system

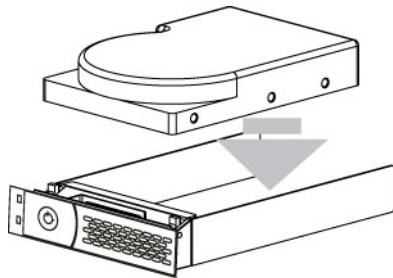
Before the buildup procedure

If you want to configure eS8 with RAID function, you have to purchase an eSATA RAID HBA card with eSATA ports and install the RAID HBA on Host computer, server, or workstation, and set up the software and driver.

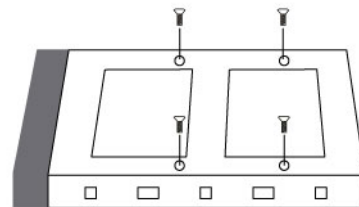


Buildup procedure

1. Take out the HDD tray and place an HDD in the tray as shown in the following figure. Tighten the four screws on HDD tray. Insert the tray with hard drive attached to it to eS8. Repeat this step for HDD1 to HDD8.



1



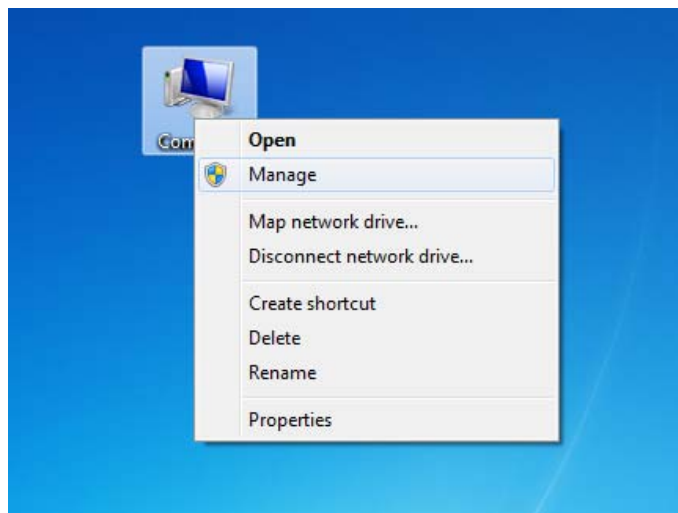
2

2. Lock the HDD trays with the enclosed key
3. Immobilize eS8 on the server rack or other proper place.
4. Connect the Host channel 1~4 to eSATA connector marked with no. 1, and channel 5~8 to eSATA connector marked with no. 2 (see the following figure). Notify your sales representative if you can't address the port number.

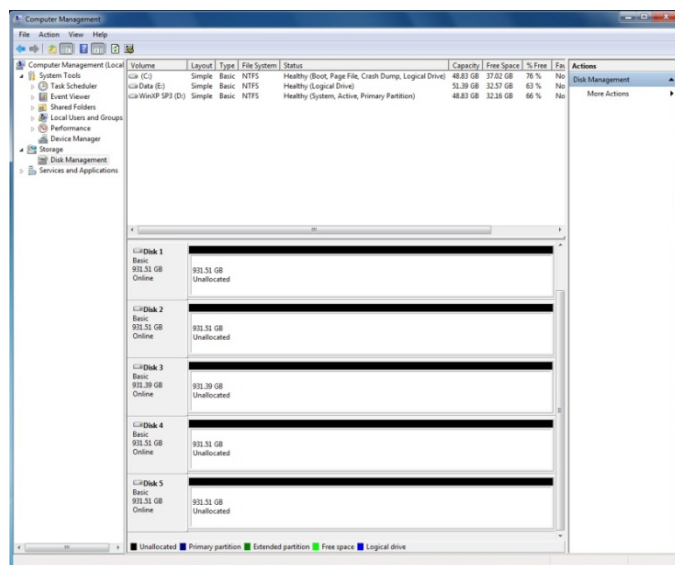


eS8

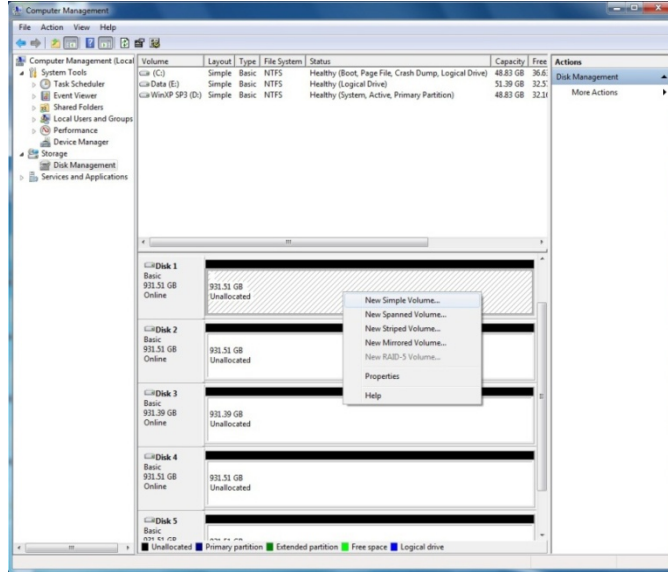
5. Connect eS8 and power source with power cord.
6. Power on eS8.
7. If you want to use eS8 with Port Multiplier function, right click Computer and select **Manage**.



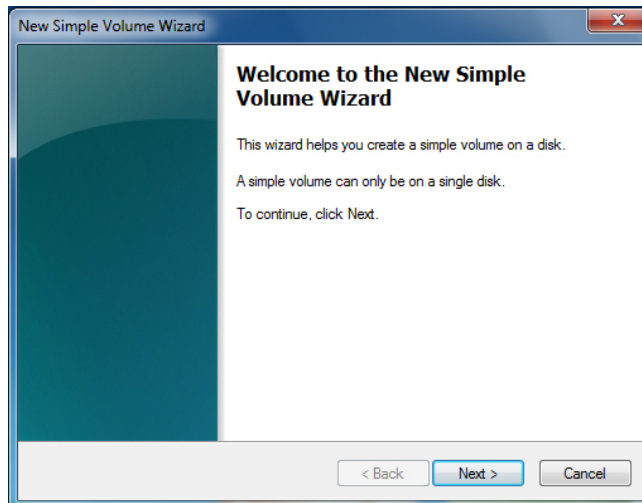
8. After Computer Management is opened, click **Disk Management**. And Disk 1 to Disk 8 will be shown at the center part of the window.



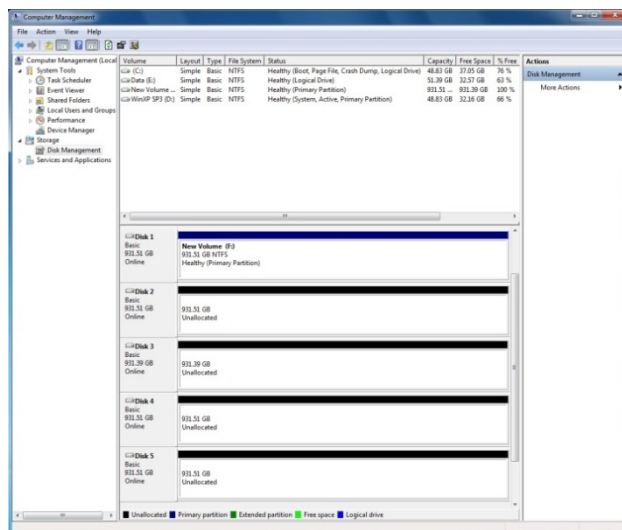
9. Right click the bar of Disk 1, and select **New Simple Volume**, and then New Simple Volume Wizard will pop up.



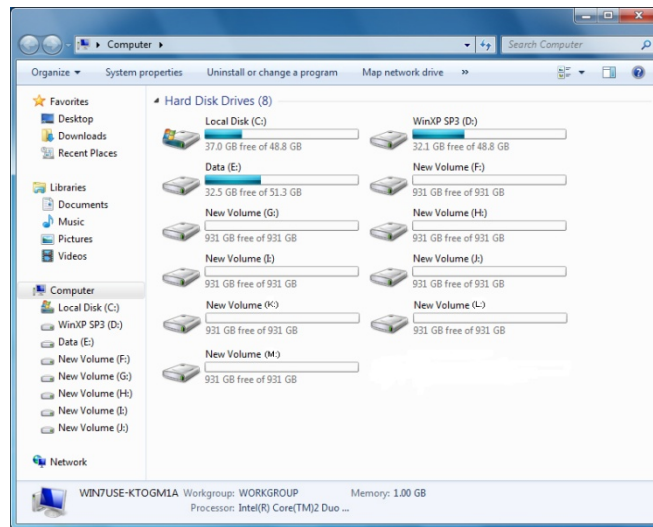
10. Click **Next** on the New Simple Volume Wizard to follow the setup procedure, and then click Finish when completing the configuration.



11. After finishing the New Simple Volume Wizard, a new volume indicating Healthy will be shown at the center part of the window. Repeat the above setup procedure to complete all the eight disks.



- After all the eight disks are completed with the New Simple Volume Wizard, click and open Computer, and all the eight disks (volumes) will be shown in the window, and users can begin to use the eight disks as eight independent volumes.



(If you want to use a RAID level with eS8, configure RAID level and capacity as you need with an eSATA RAID HBA, and then eS8 is ready to be used.)

About Port Multiplier Solution

Features and benefits:

- Two built-in Port Multiplier chips to control max. 8 HDDs.
- Only one eSATA cable to control max. 4 HDDs. (Max. cable performance 3 Gbps per cable)
- Shielding connector ensure the frequent plug/unplug as USB
- Compliant with Silicon Image SiI3124-2 SATA II PCI-X or SiI3132 SATA II PCI Express with eSATA port

