



Remo

Installation & User manual

EN



Copyright © 2005 Bewator AB, Solna.

Material from this manual may only be copied with the consent in writing of Bewator. Bewator reserves the right to alter both the content of the manual and the design of the product.

Document number: **80834-2**

Bewator AB is part of the Swedish Bewator Holding AB, which develops and markets a complete security product range that includes access control and alarm. Sales, installation and servicing are handled by a national dealer network.

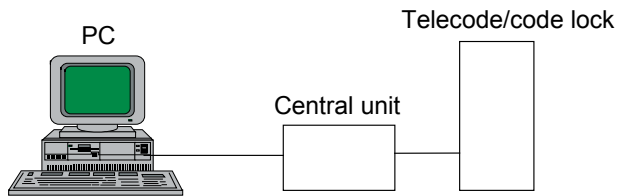
Actions (such as unauthorised manipulation, copying etc.) must not be taken with the software contained in the products and systems. Such actions are regarded as copyright violation and may result in imprisonment or fines and may likewise lead to an obligation to pay damages and compensation for using the software.

Content

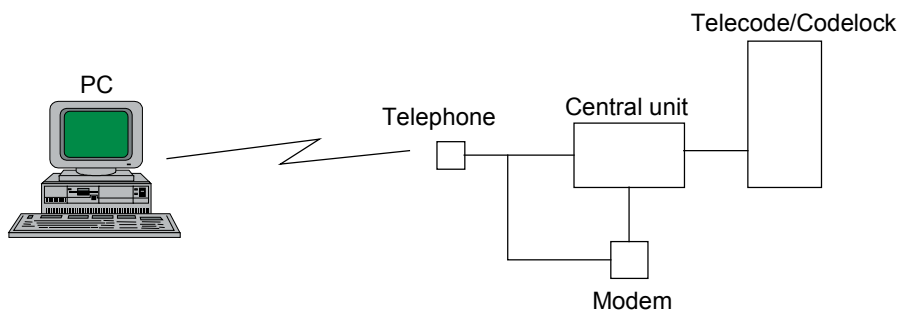
Remo – remote programming from your PC	4
Installation	5
Check version number.....	5
Replace the PROM.....	5
Connect modem and PC	6
Two telephone lines – the Telecode works during programming.....	7
Change settings	8
Set system password.....	8
Installing Remo	9
Start Remo	10
Programming.....	11
Registrera anslutna system.....	11
Log in to a connected system.....	12
Change system password.....	13
Change user name and password.....	13
Set time and date.....	14
Programme time zones.....	15
Programme doors	16
Programme codes	18
Programme telephone and quick numbers	19
Events.....	20
Print events to file	21
Technical Specification.....	21
Notes.....	22

Remo – remote programming from your PC

Using Remo you can programme the codelock central unit (KC 5000) or the Telecode central unit (TC5000) from your PC. The PC can be connected directly to the central unit or via modem.



PC directly connected to the central unit.





PC connected via modem.

Installation

The following sections describe how to install Remo software.

Check version number

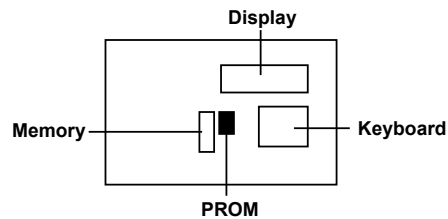
Before installing Remo, check the version number of the central unit's software.

1. Open the central unit.
2. Press  on the small keyboard located on the inside the unit.
3. Press . The version number is displayed. If the version is 3.09 or earlier, the central unit's PROM (Programmable Read Only Memory) must be replaced. See instructions below.

Replace the PROM

Follow these instructions only if the central unit's version number is 3.09 or earlier.

1. Switch off the power to the central unit.
2. Remove the PROM carefully, using a small lever to lift the PROM symmetrically from its socket. The PROM is located under the display on the central unit's door.



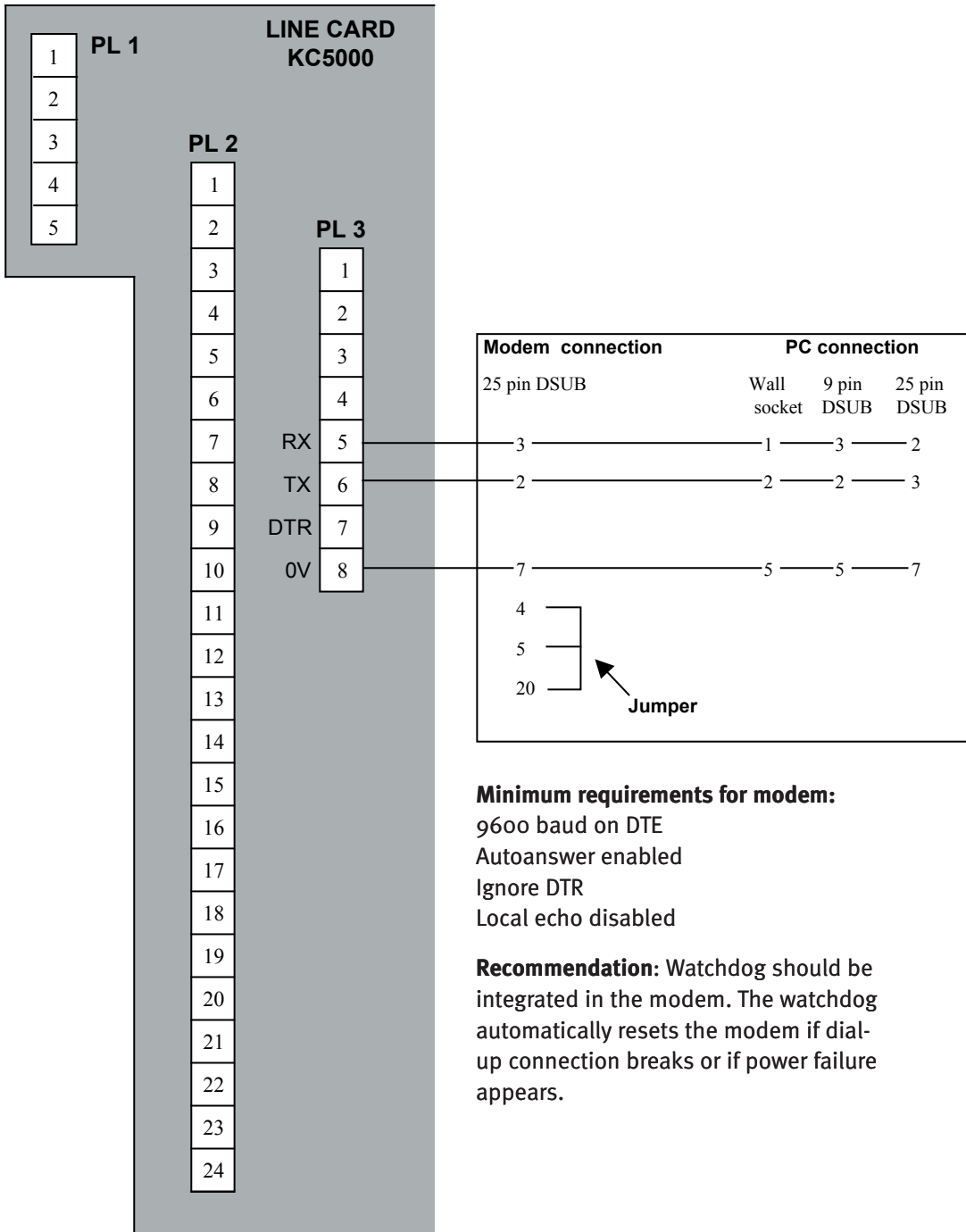
3. Insert the new PROM. Note that the indent in the PROM should point downwards and that two pins of the socket below the PROM should be empty when it is inserted.



4. Switch on the power. Check that the new version number is displayed on the LCD screen.

Connect modem and PC

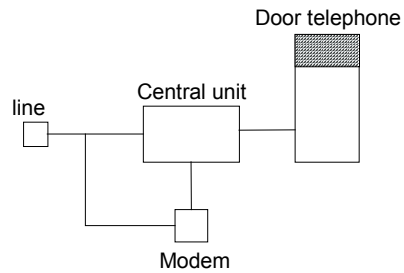
Connect a modem or a PC according to the diagram below.



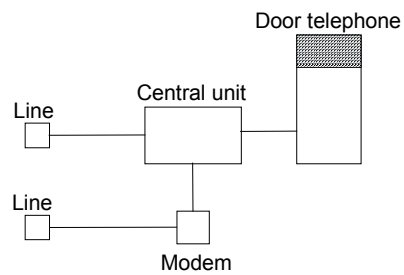
Two telephone lines – the Telecode works during programming

If it is possible to connect the central unit to one telephone line and the modem to another, the Telecode can be used while the central unit is being programmed. If only one telephone line is used, the central unit will be busy during programming which means the Telecode will not work until the programming is finished.

See the illustrations below:











The Telecode will not work during programming.



The Telecode will work during programming.

Change settings







For remote programming to work, certain settings must be changed in the central unit. Proceed as follows:

1. Press  three times. The OPTIONS MENU is displayed.
2. Press . The text ↓↑ TO STEP! is displayed.
3. Press  until ADVANCED OPTIONS is displayed.
4. Press . ENTER PARAM., VALUE is displayed.
5. Enter 620 (displayed as 62,0) and press . This disconnects the DTR input that is used for the printer. ADVANCED OPTIONS is redisplayed.
To reinstall the printer, follow steps 1-5, only enter 621 in step 5 instead.
6. Press . ENTER PARAM., VALUE is redisplayed.
7. Enter 631 (displayed as 63,1) and press . Now you have disconnected the option for the central unit to receive incoming calls.
8. Press . The central unit goes back to normal mode.

Set system password

To prevent unauthorised people programming the central unit, a system password must be set. This password will be required at a later stage in the Remo software, as you register the system to be programmed from Remo.

This is how to set the system password:

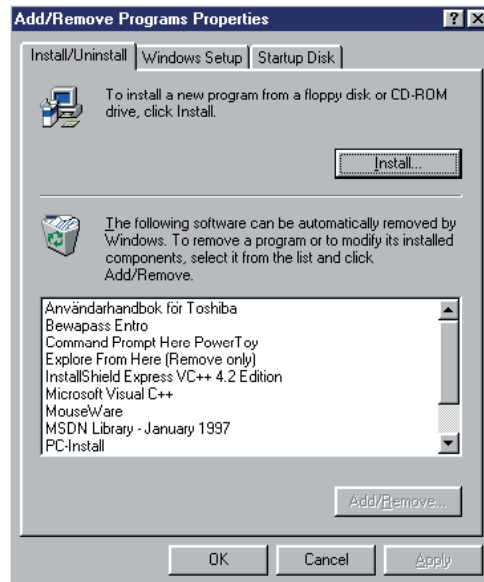
1. Press  three times. The OPTIONS MENU is displayed.
2. Press . The text ↓↑ TO STEP! is displayed.
3. Press  once. CHANGE PASSWORD is displayed.
4. Press . The text ENTER PASSWORD (XXXXXX) is displayed. If a system password already exists it will be within the parenthesis.
5. 5 Enter a six-digit password or keep the password that is displayed.
6. Press .
7. Press  to go back to normal operation.

The central unit is now set up to be programmed from the Remo program.

Installing Remo

This is how to install the Remo software on your PC:

1. Go to the Start menu; choose **Settings** and then the **Control panel**.
2. Double click the **Add/Remove Programs** icon. The following window is displayed:



3. Click **Install**. The following window is displayed.



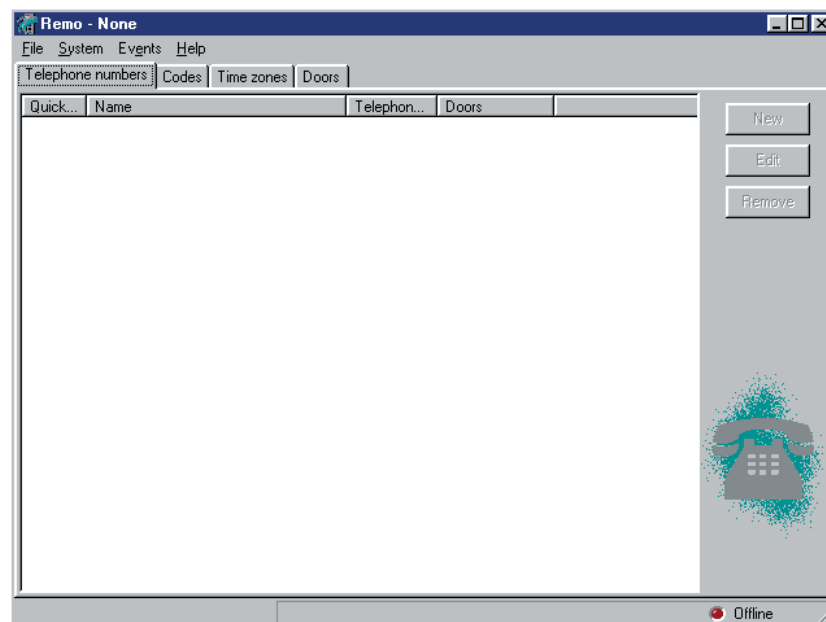
4. Insert the first installation diskette in the diskette drive and click **Next**.
5. Follow the instructions on the screen.

Start Remo

1. Go to the Start menu; choose Programs, Bewator Remo and finally Remo. The login window is displayed:



2. Enter **bewa** in the **User name** field and press TAB.
3. Enter **pass** in the **Password** field.
4. Click **OK**. This window will be displayed:



You are now logged on.

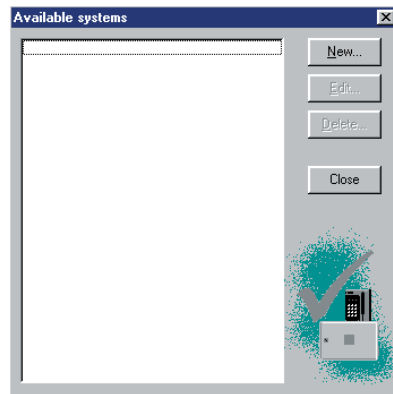
Programming

This chapter describes how to use Remo to programme the central units

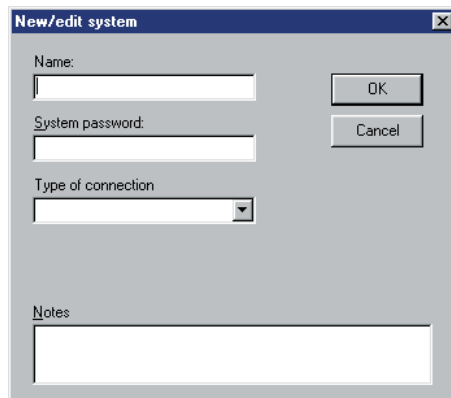
Registrera anslutna system

To be able to programme the system or systems, they have to be registered in Remo. Proceed as follows:

1. Choose **Edit** on the **System** menu. The following window is displayed:



2. Click **New**. The following window is displayed:



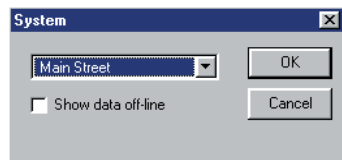
3. Choose a name for the system in the **Name** field.
4. Enter the system password in the **System password** field. The system password must have been chosen and set in the central unit by the installer
5. Click in the **Type of connection** list box and choose the required type
 - If the central unit is connected directly to the PC via a communications port (COM. port), choose **Serial**. Then choose the desired COM. port in the listbox displayed
 - If the central unit is connected via modem, choose **Modem**. Then enter the telephone number of the modem connected to the central unit
6. Type any additional information you require in the **Notes** field, for example the location of the system.
7. Click **OK**. The **Available systems** window is redisplayed.
8. To register yet another system, click **New** and proceed the same way as described above. Otherwise click **Close**.

Log in to a connected system

There are two ways of logging in to a connected system, depending on whether Remo is running or not

If Remo is running:

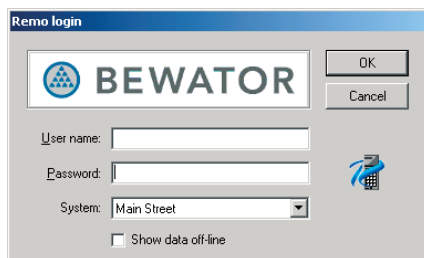
1. Choose **Log in to another system** on the **File** menu. The following window is displayed:



2. Choose the desired system in the listbox and click OK.

If Remo is not running:

1. Start Remo. The login window is displayed.



2. Enter your logon name and password and choose the desired system in the **System** listbox.
3. Click OK.

By selecting the **Show data off-line** check box before clicking OK, the system's information can be viewed without logging in. Note that in this case Remo will have no contact with the central unit, which means that any information registered at the central unit since the last time Remo was online will not be displayed.

NOTE! If the system is modem connected, transferring information from the system may take between 5 and 30 seconds (depending on the size of the system).

Change system password

The system password set by the installer for contact between the PC and the central unit should be changed.

Proceed as follows:

1. Log in to the desired system.
2. Choose **System password** on the **System** menu. The following window is displayed:

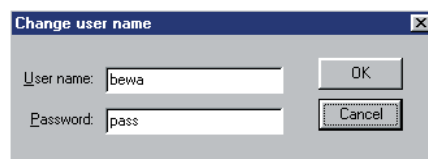


3. Enter the new six-digit password in the **New system password** field.
4. Click **OK**.

Change user name and password

The user name and password used to log on to Remo should also be changed from the default.

1. If you are not already logged on, log on to Remo using the **bewa** user name and the **pass** password.
2. Choose **Change user name** on the **File** menu. The following window is displayed:



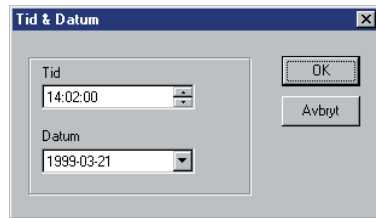
3. Enter the new user name in the **User name** field.
4. Enter the new password in the **Password** field.
5. Click **OK**.

Set time and date

This is how to check whether Remo and the central unit are synchronised regarding time and date.

Proceed as follows:

1. Choose **Time and date** on the **System** menu. The following window is displayed:



The central unit's time and date settings are displayed

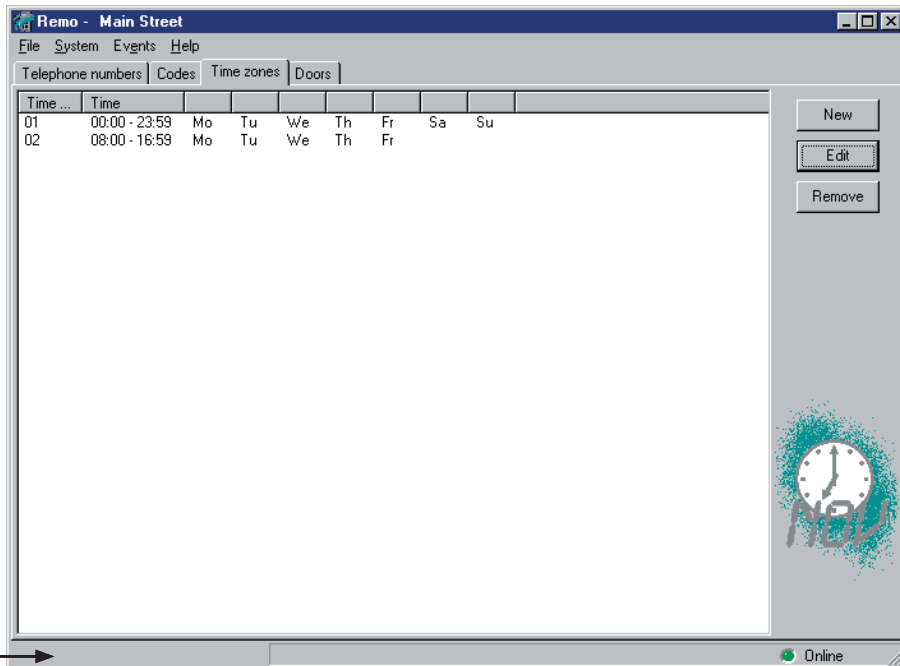
2. To change these settings, enter the desired time and date and click OK. The information is transferred to the central unit.

Programme time zones

This section describes how remote programming of time zones via the Remo software is done. For information about how time zones are used, read the Telecode 5000 or KC 5000 manuals.

This is how to programme time zones

1. Click the **Time zones** tab. This is what the window displayed might look like:

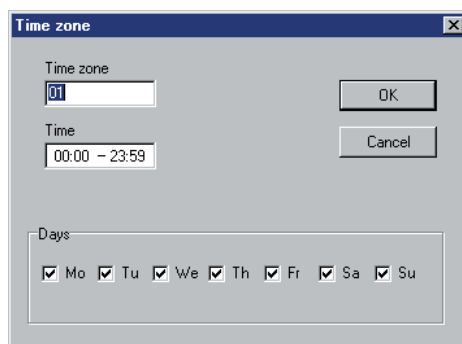


This field shows what is going on in Remo, for example "Importing time zones...".

If time zones are programmed in the central unit, these are displayed here. The information is imported from the central unit.

- To delete a time zone, select it and click **Remove**.
- To change a time zone, select it and click **Edit**.
- To create a new time zone, click **New**.

In the two latter cases the following window is displayed:

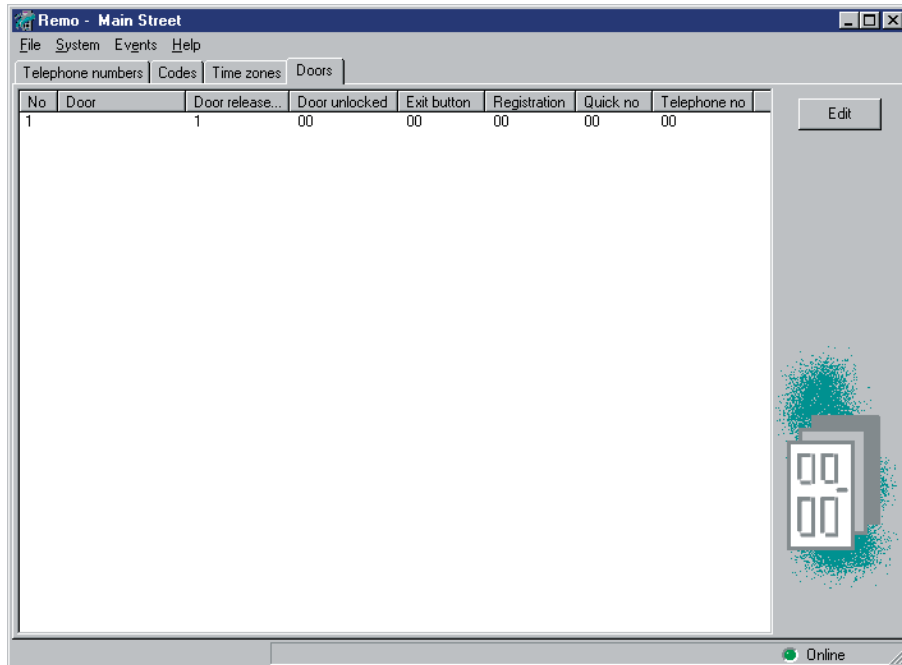


2. Enter the desired time interval in the fields next to **Time**.
3. Select which **days** the time zone should apply by clicking on the check boxes next to the desired days.
4. Click **OK**

Programme doors

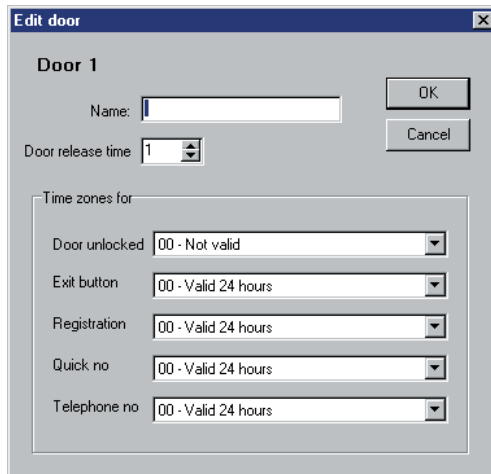
This is how to programme information about doors:

1. Click the **Doors** tab. This is what the window displayed might look like:



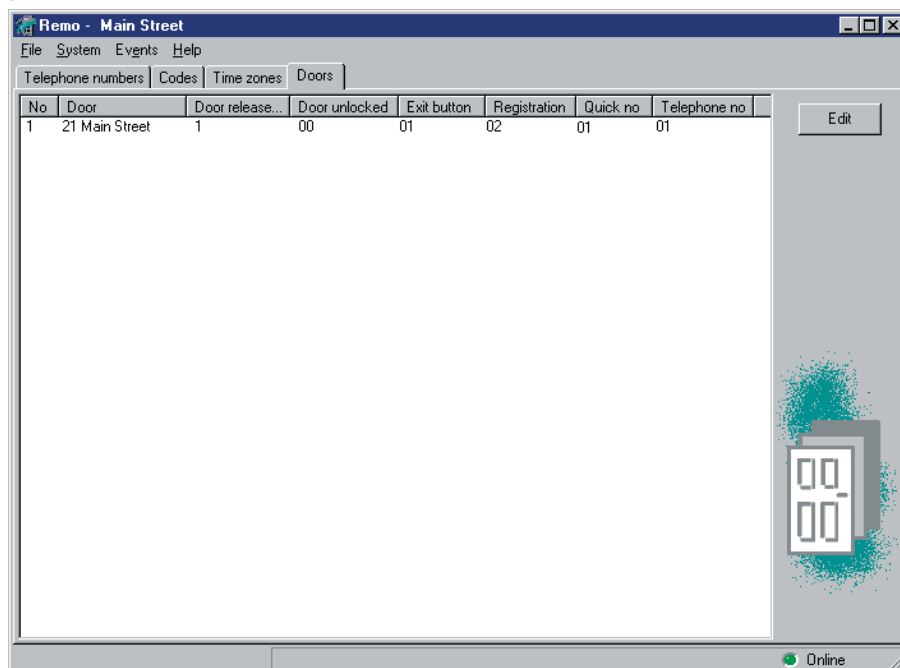
If any door information is programmed in the central unit, it is displayed here. The information is imported from the central unit.

2. Select the top row (door 1).
3. Click **Edit**. The following window is displayed:



4. Find a name for the door and type it in the **Name** field. Note that this name will not be stored in the central unit, so if another PC connects to the central unit, this name will not be shown on that PC.

5. If needed, change the door information listed below:
 - **Door release time** (0-99 seconds). The time during which the door remains unlocked following a correct code or opening from a telephone.
 - **Door unlocked.** Time zones defined for unlocked door can be chosen here.
 - **Exit button.** Time zones defined for egress buttons to work can be chosen here.
 - **Registration.** Time zones defined for event registration (for example transactions) can be chosen here.
 - **Quick no.** Time zones defined for use of quick numbers can be chosen here. (Does not apply to KC 5000.)
 - **Telephone no.** Time zones defined for use of telephone numbers can be chosen here. (Does not apply to KC 5000.)
6. Click **OK**. This is what the result might look like

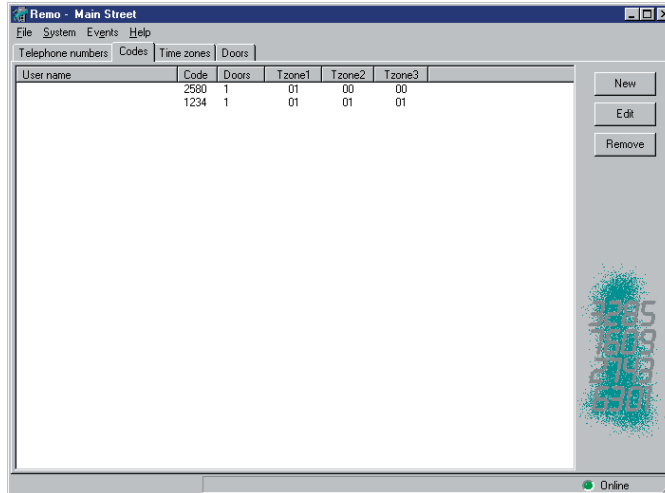


7. Select the next row and supply information about this door in the same way as described above

Programme codes

This is how to programme codes:

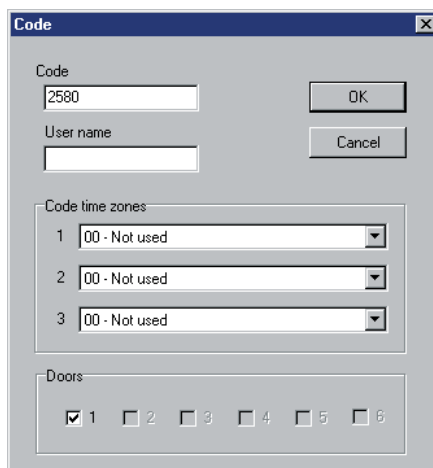
1. Click the **Codes** tab. This is what the window displayed might look like:



If there are codes programmed in the central unit, these are displayed here. The information is imported from the central unit.

- To remove a code, select the row and click **Remove**.
- To change a code, or register the name of the person using the code, select the row and click **Edit**.
- To register a new code, click **New**.

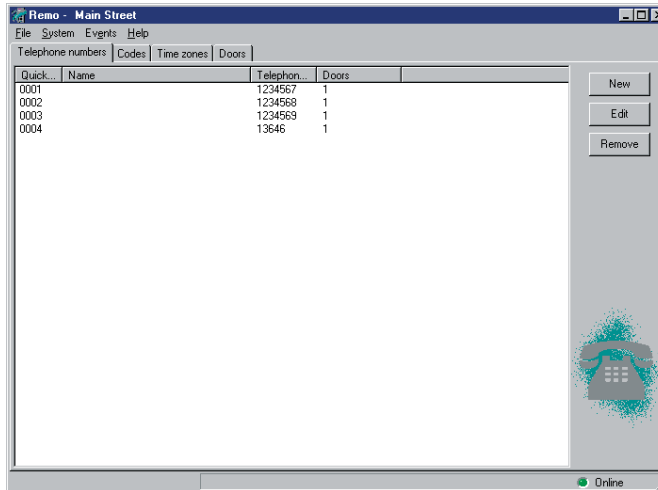
In the two latter cases, this is what the window displayed might look like:



2. Enter the desired four-digit code in the **Code** field.
3. In the **User name** field, enter the name of the person or group (for example Tenants) using the code. Note that this name will not be stored in the central unit so if another PC connects to the central unit, this name will not be shown on that PC
4. Choose the time zones (three at the most) when the code is required to work.
5. Select the doors where the code should apply.
6. Click OK. The Codes tab is redisplayed.
7. To register or change a new code, proceed as described above.

Programme telephone and quick numbers

1. This instruction only applies to programming of Telecode 5000. This is how to programme telephone and quick numbers:
2. Click the **Telephone numbers** tab. This is what the displayed window might look like:



If there are telephone and quick numbers programmed in the central unit, these are displayed here. The information is imported from the central unit.

- To delete a number, select the row and click **Remove**.
- To change a number, select the row and click **Edit**.
- To programme a new short number, click **New**.

In the two latter cases, the window displayed might look like this:

If you clicked **Edit**, the selected quick number is displayed but you can only change information about name, real telephone number and at which doors the quick number should work.

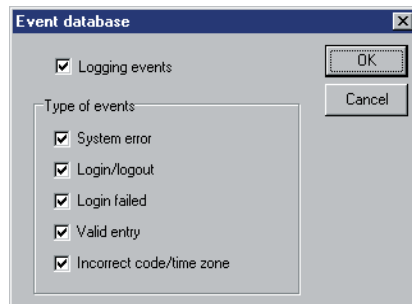
If you clicked **New**, a new quick number is generated automatically.

3. In the **Tel no** field, enter the actual telephone number corresponding to the quick number.
4. In the **Name** field, enter the name of the person to which the quick number goes.
5. Select the doors where the quick number should work.
6. Click **OK**. The Telephone numbers tab is redisplayed.
7. To register or change a new quick number/telephone number, proceed as described above.

Events

The latest 400 events are stored in the central unit. This is how to choose which events to register:

1. Choose **Change filters** on the **Events** menu. The following window is displayed:



The default setting is that all types of events are registered.

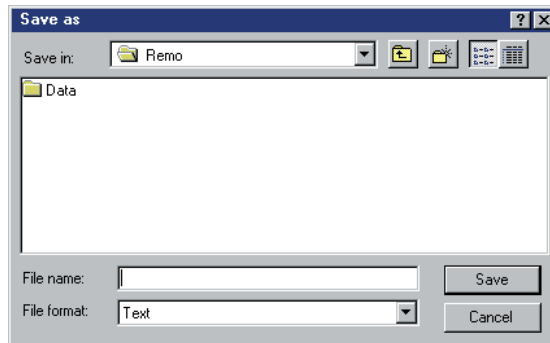
2. Deselect the check boxes for event types not to be registered or keep the default settings. Deselecting the **Logging events** check box means that no events will be registered.
3. Click **OK**.

Print events to file

If needed, events can be saved as a file and be printed. In the file and on the printout, registered events are listed under the Date, Time and Type of event headings.

Proceed as follows

1. Choose **Print to file** on the **Events** menu. The following window is displayed:



2. Go to the folder where you want to save the file.
3. Enter a name for the file in the **File name** field.
4. Click **Save**. Events printed to file are automatically erased from the central unit's memory.

Technical Specification

System requirements:

- 486 processor, 66 MHz. Pentium recommended.
- 16 Mb RAM. 32 Mb recommended.
- At least 10 Mb free hard disk space.
- CD ROM drive.
- VGA colour screen.
- Serial port with UART circuit 16C550 for connection of central unit/modem.
- Parallel port for connection of printer.
- Windows 95 (OSR2,) Windows 98, Windows 2000 or Windows XP.

