

# User Manual

**SYLVANIA**

Model number: SMPK4077



The MP3 player is a **brand-new** generation of digital portable device, supporting MP3/WAV music format, **voice recorder**, AMV format play, JPEG photograph browse and E-book text reading. Its perfect sound quality, great reliability and exquisite appearance make it a masterpiece. Devoutly hope to bring you great enjoyment in this digital era.

## Unique Features

- Exquisite Appearance  
Unique appearance designed and comfortable for handling
- Multi-Codec Player  
e.g.: MP1, MP2, MP3, WMA, WMV, ASF and WAV Music format
- Firmware Upgrade  
Providing the latest updated features via firmware upgrade from the website ([www.curtisint.com](http://www.curtisint.com))
- Drive Free U Disk  
You may manage your files directly through “Portable Disk” in “My Computer” on Windows2000 Operating System or above without driver.
- “Private Space” Disk Mode  
The flash memory can be divided into two parts by using the accessory tools and one is encrypted to hide the contents saved inaccessible by others. Keep Your Secret!
- Record/ Replay  
The player supports recording through built-in microphone and saves as WAV and ACT formats. Meanwhile it supports real digital A-B replay or comparison replay.
- 7 Preset EQ  
Normal, Rock, Pop, Classic, Soft, Jazz and DBB
- Multi-play Mode  
Normal, Repeat One, Folder, Repeat Folder, Repeat All, Random, Intro.
- Power Off  
You may set Sleep Timer or Off Time mode in your own convenience.

## Declaration

- \* Thank you for your purchase.
- \* Please read this manual carefully before using your new player.
- \* Contents in this manual may change possibly for better service.
- \* We have the right to make changes to this manual without notice.

\* If the actual operations of your player are not the same as the instruction in this manual, please visit ([www.curtisint.com](http://www.curtisint.com)) for latest product information.

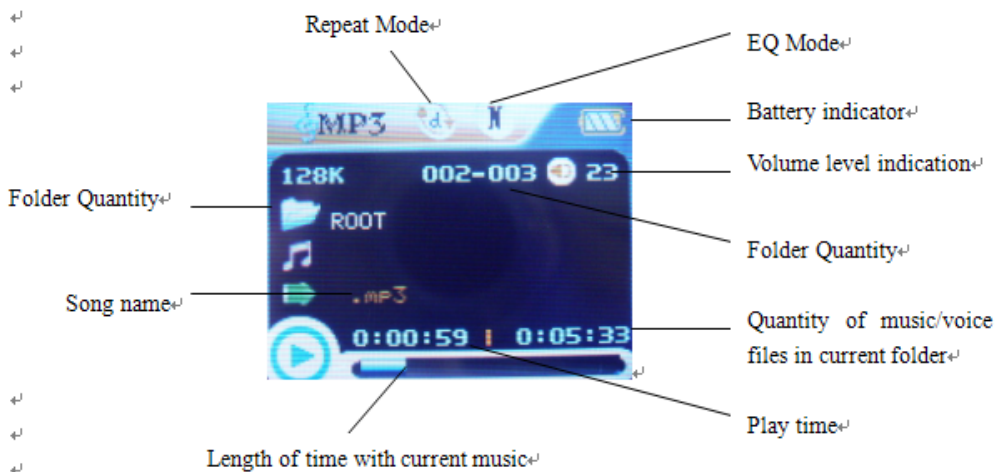
## 1. Locating the Controls

### ● Appearance & Keys




S/N	Description	S/N	Description
1	Menu button (Enter/ Return)	6	Power switch
2	Vol/ Hold key(Lock)	7	LCD display
3	Play/Stop	8	USB
4	Previous track/Rewind(⏮)/VOL-	9	Earphone head
5	Next track/Forward(⏭)/VOL+		


### ● LCD Window



- **Battery**

The player is in multilevel level battery monitoring system.

 Indicates that battery is 3.6V and the power in battery will become less when using.

 Indicates low battery power and battery should be charged up.

## Basic Operation

- **Entering Menu System**

Pressing **M button** may enter the menu system, including main menu (long press **M button** at Stop state), submenu at Play state (press **M button** to enter) and submenu at stop state (press **M button** to enter).

- **Browsing**

- Browsing music files or menu options:

- Short press **< / >** button

- Fast forward or fast backward when playing:

- Long press **< / >** button

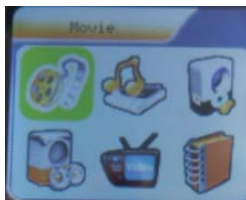
- **Entering Different Modes**

You may enter different modes from the main menu.

**Main menu:**

(Long press the **M button** to enter )

**Movie mode:**



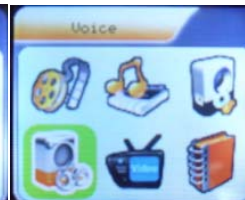
**Music mode:**



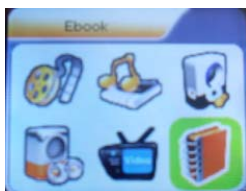
**Record mode:**



**Voice mode:**



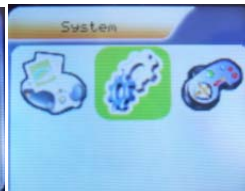
**E-Book:**



**Photo**



**System setting**



**GAME:**



- **Volume Control**

**Remark:**

*Long press **M button** to return to the main menu at the modes. When connecting the USB cable to PC, then will enter USB mode.*

At the music mode, voice mode, short press **V** buttons to enter the volume control interface and then press the **< / >** button to adjust volume (follow along with number of volume value be

changed).

- **Power On/Off**

1. Turn on by Power switch

- ◆ After push the **Power switch** ( OFF→ON) , the player turn on automatically and enter power on **“SYLVANIA”** logo interface:



- ◆ When connecting the USB plug to PC, the player turn on automatically and will be entering USB mode:

2. Turn ON/Off by Play button., after power switch to ON;


- ◆ when the player is in OFF mode, long press **Play** button to turn on
- ◆ when the player is in ON model ,long press **Play** button to turn off

## Play Music

- **Basic Operation**

1. Connect the earphone to the player	2. Turn on <b>“POWER SWITCH”</b>
3. then enter the main menu: 	4. press <b>M button</b> to enter the Music mode: 
5. Short press the <b>PLAY</b> button to play music	6. Choose music > button : to choose previous music. > button : to choose next music.
7. Volume control (Press V) press the < / > button to adjust volume.	

- **EQUALIZER Mode**

1. When playing music 	2. Press the <b>M</b> button to enter Play Submenu
3. select the 'Equalizer' and press MENU button to conform.	4. choose the EQ that you want from 7 kinds by press MENU button

- **Lyric Display**

This player supports “\*.LRC” lyric files, and lyrics may be synchronous displayed while playing music.

- How to use lyric files?


Save the lyric file with the same name as that of the corresponding music file.

For example.: Music file name: GiGi-Sky.mp3

Lyric file name: GiGi-Sky.mp3.

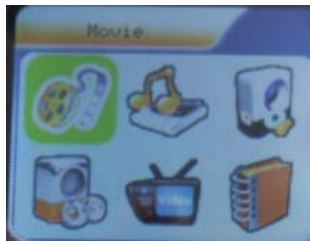
- How to know whether the lyrics exist?

If the current song has matching lyric files, the lyric sign  will be display at the top of music mode.

1. Current song has matching lyric files	2. Long press <b>M</b> to enter the Lyric Interface when playing.
3. Press <b>M</b> button to return to Music play mode. 	4. Browse lyrics manually.

## Movie mode

1. Enter the main menu and press the > button to select “MOVIE” mode.



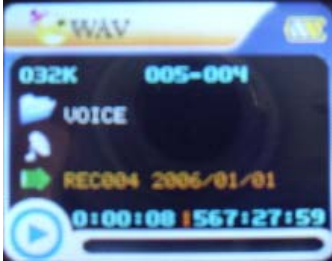


2. Press the **M** to enter.
3. press the PLAY to start playing AMV files
4. Choose movie
  - < button : to choose previous file.
  - > button : to choose next music file.
5. Volume control
  - 1) Press **V**
  - 2) Press < / > to adjust volume level.

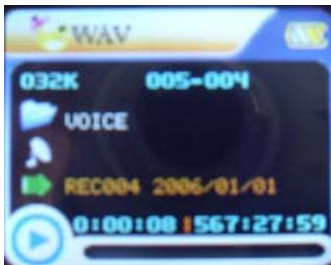
## Voice Recording

Make sure that the battery is not in the status of “low battery”.


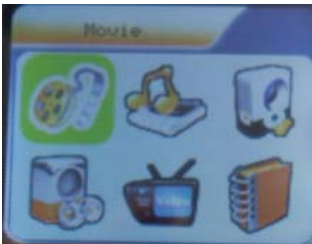
- **Recording in Record Mode**

<p>1. At the main menu.</p> 	<p>2. Press &gt; button to choose recording mode.</p> 
<p>3. Press <b>M</b> button to enter Record mode</p> 	<p>4. Press <b>Play</b> button to start recording.</p> <p>5. Press <b>Play</b> button again to pause recording.</p> <p>6. Press <b>Play</b> button to continue recording.</p> <p>7. Long press <b>Play</b> button to stop recording.</p>

- **Select REC type**

<p>1. At the record mode stop interface :</p> 	<p>2. Press <b>M button</b> to enter record submenu</p>												
<p>3. Press &gt; button to select "REC type" option</p> <p>5. Press &gt; button to select desired recording type</p> <p>6. Press <b>M</b> to confirm the type selected</p> <p>7. Press <b>PLAY</b> button to start recording</p>	<p>4. Press <b>M button</b> enter this option</p> <ul style="list-style-type: none"> <li>● <b>REC type:</b></li> </ul> <table border="1" data-bbox="922 1230 1357 1411"> <tr> <td>Fine REC</td> <td>WAV format</td> <td>Fine timbre</td> </tr> <tr> <td>Long REC</td> <td>ACT format</td> <td>Generic timbre</td> </tr> <tr> <td>Fine VCR</td> <td>WAV format</td> <td>voice control record</td> </tr> <tr> <td>Fine VCR</td> <td>ACT format</td> <td>voice control record</td> </tr> </table>	Fine REC	WAV format	Fine timbre	Long REC	ACT format	Generic timbre	Fine VCR	WAV format	voice control record	Fine VCR	ACT format	voice control record
Fine REC	WAV format	Fine timbre											
Long REC	ACT format	Generic timbre											
Fine VCR	WAV format	voice control record											
Fine VCR	ACT format	voice control record											

## Playback Files

<p>1. Enter the main menu</p> 	<p>2. Press &gt; button to choose "Voice mode"</p> 
<p>3. Press <b>M</b> button to enter Voice mode</p>	<p>4. Press <b>PLAY</b> button to start playing.</p>

interface



5. Choose music  
< button : to choose previous record file  
> button : to choose next record file.

6. Volume control  
1、Press V  
2、Press < / > to adjust volume level.

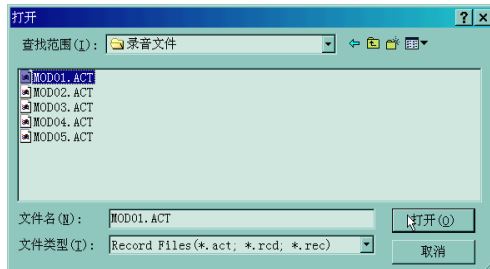
## Convert ACT format files to WAV format files

The ACT format files can be converted to WAV format files through the accessory installation tools.

1. Run "Sound Convert Tool" program, and click "Open" button.



2. Choose the ACT format files need conversion



4. Click the "Convert" button, the conversion starts



\* Besides the conversion from ACT to WAV, the accessory tool can also play WAV and MP3 files.

## photo

- 1、Entering the main menu.
- 2、Push the ">" buttons to choose "Photo"
- 3、Long press "M" buttons to enter the "Photo"



## System Setting

System parameters can be set here and every option varies according to firmware upgrading

At the menu, press > to select the "Setup":



Press **M** button to System Setting interface is as follows:

### ● Parameters Introduction

Clock (Date & time)	set the date and time when recorded files are saved
LCD set	set the period of time (second) when Backlight stays on without any operation
Language	Set different language displayed
Power off	Set a fixed time after which the player may turn power off automatically
Replay mode	Set working states on Replay mode
Online device	<b>MTP and USB Disk setting</b>
Online Mode	an option specially designed for "Private Space" function
Memory info.	Show memory capacity and percentage that has been used
Firmware Version	show firmware version
Firmware Upgrade	special for firmware upgrading
DRM time	<b>Greenwich Mean TIME</b>
Remove MTP info	<b>Exit MTP mode</b>
Exit	Exit from current interface

### ● Instruction

#### ○ "Date & time" set

1. System Setting Interface	2. Press <b>M</b> to enter Record Time Interface.
3. Press <b>V</b> to set time in sequence of "YY-MM-DD"	4. Push < / > button to adjust numbers
5. Press <b>M</b> to confirm and exit.	

#### ○ "LCD set" setting

Operating steps is as follows:

1. At System Setting interface,	2. Press > key to select "LCD set" option,
---------------------------------	--

3. Press <b>M</b> button to enter “LCD set” submenu:	4. Press <b>M</b> button to choose ‘Brightness screen savers’
5. Press < / > button to adjust time (Unit : second), and press <b>M</b> to confirm and exit.	

■ **Black screen mode**

Set fixed period of time (unit: second) when no operation on keys , the player may turn black screen automatically. If “0” is selected, function is invalid.

○ **“Language” setting**

1. At System setting interface, press < / > button to select “Language” icon:	2. Press M button to enter “Language” setting interface:
3. Press < / > button to select desired language.	4. Press <b>M</b> to confirm to exit.

Language lists as follows :( maybe add more language)

English
French
German
Italian
Spanish
Portuguese
Dutch
Turkish

○ **Power saving**

Operating steps refer to Language setting.

**Off Time** mode refers that after a fixed period of time (unit: second) when no operation on keys at Stop mode, the player may turns off automatically to save power. If “0” is selected, power saving function is invalid.

**Sleep Time** refers that you may set a fixed period of time (unit: minute) for the player to turn off automatically when no keys operation no matter which mode it is at any state. This function is specially designed for listening to music before sleep. **Note:** Setting of Sleep Timer is valid only once and the set time will be cleared after power off. The time needs to be set again next time.

○ **Replay Mode**

Manual Replay means that at A-B Replay Mode the endpoint B can be set manually only.

Auto Replay means that at A-B Replay Mode the endpoint B can be set automatically.

(Especially for English Reading files without music)

- o **Online Mode**

Operating steps refers to Equalizer setting.

Some operating systems (under Windows 2K SP4) can not support two driver letters in one USB disk. Thus, if “Private Space” function is on, choose which disk you are going to use, i.e., “single ordinary disk” or “single encrypted disk”, in order for correct display of selected disk after connecting to PC.

- o **Memory Info.**

The number displayed represents total memory capacity and the percentage refers the capacity used.

- o **Firmware Version**

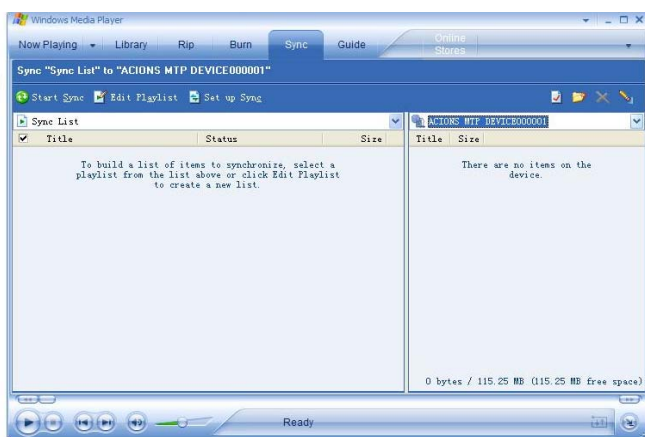
Firmware Version information the player uses can be obtained here.

- o **Firmware Upgrade**

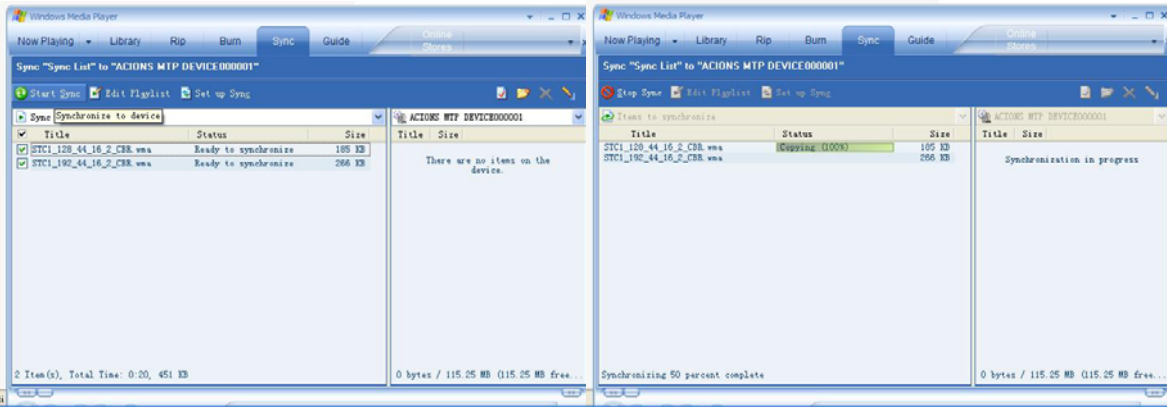
It is specially designed for Firmware Upgrade.

## Enter MTP Media

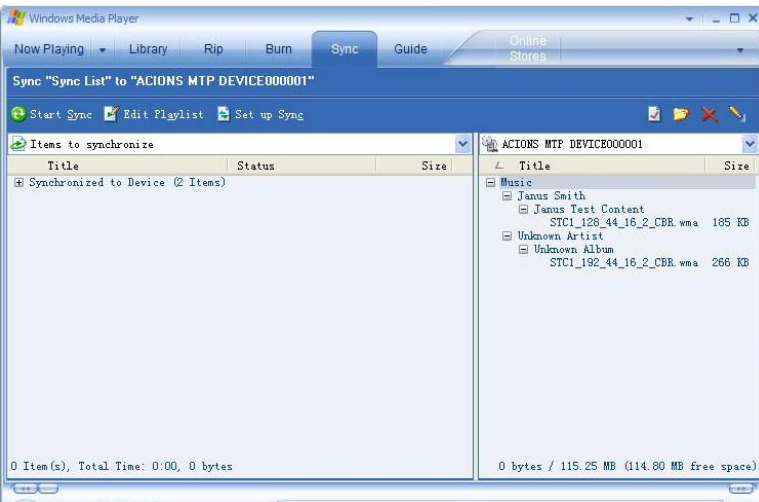
1. Choose “**Setting**” option on the main menu.
2. Press < / > to select “**Online Device**” – “**Media Device**”, Press **M** to confirm
3. Connect PC enter into MTP media player
4. Pop-up software will show MTP media player, confirm it and choose **Sync** column



5. Choose the music, and copy into documents file in left column, click “**Start Sync**”



6. After complete, you can see the music in the right column side.



7. Disconnect USB-cable, the MP3 which inside ID3 Play list with License.

## E-Book function

This function supports all TXT file.

1. Enter the main menu.	2. Press > button to choose "E-Book"
3. press <b>M</b> button to enter TXT file be select menu (if no text file the display "No files" on the screen)	4. Press > button to select desired text file to read, and then press <b>Play</b> button to enter text interface
5. Press < / > button to turn the pages in sequence. (only suitable for "Manual play" )	

## Game

1. at the main menu



2. Press > button to choose "Game" option:
3. press **M button** to enter game menu state.
4. There are 3 games inside, use < /> to select the games, press M to confirm

#### Game 1: RusBlock

- Press M to start
- V is down block; M is change direction, long press M return to main menu
- Play button is Pause; < is left; > is right

#### Game 2: Puzzle

- Press M to start
- V is up; M is return to main menu;
- < is left; > is right

#### Game 3: Sudoku

- Press M to start
- V is up and down; Play button is numbering; long press M return to main menu
- < is left; > is right

*Note: Long press "V" will lock the player*

### HOLD

1. Long press "V" key to lock (see the picture 1)
2. Then continue to long press "V" key to open the lock. (see the picture 2)



(1)



(2)

## Use USB Disk

The player supports standard USB disk function with operating system of Windows98 (driver needed), Windows 2K and above (driver free), Mac OS 10.3 and above, Linux 2.4.2 and above.

The player supports power supply through USB. At waiting Mode, press **MODE** to exit to main menu, then select to enter desired mode.

The player also supports Suspend Mode.

How to connect to PC? Power on the player and plugs the USB cable to enter the following Mode 1.

The player may display the following mode after connecting to PC:

1. Waiting state :



2. Downloading state:



3. Uploading state:



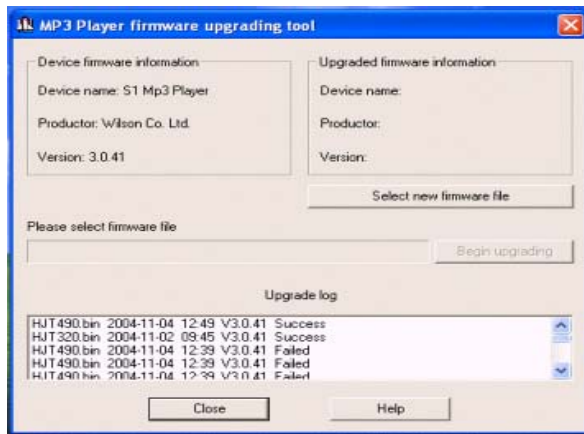
○ Created new folder

The player can identify the 99 folders set up in the U-disk.

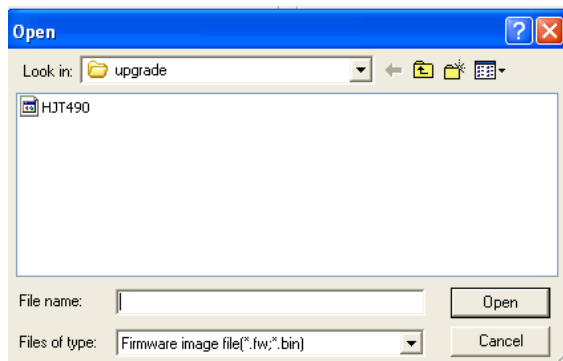
## Firmware Upgrade

The player supports firmware upgrading or maintenance through installing special tools on PC.

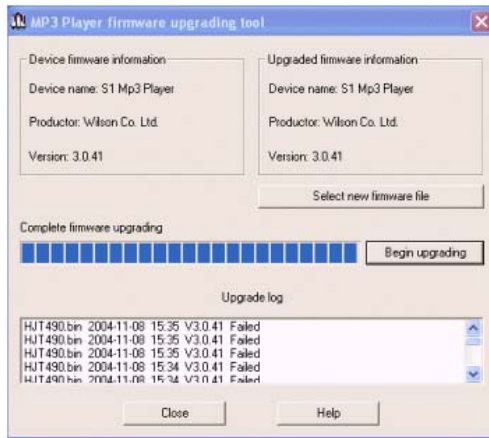
1. Enter the main menu.
2. Press > button to select "System Setting"
3. Press **M button** to enter System Setting
4. Press > button to choose "Firmware upgrade" option
5. Press M button to enter "firmware upgrade" interface:
6. Connect the player to PC
7. Run the "MP3 Player Update" program in upgrading tools on PC, then click "Select new firmware file" button. the UI is as follows:



8. Choose new firmware program (You may find it in accessory CD or download form our website.)



9、Click “Start” button, the system starts



10、upgrading.

11、If upgrading successfully, the player reset.



**Notice:**

- *Firmware upgrade is an operation to promote and optimize the performance of the player. Even if the firmware works without upgrading, there is no any influence on the normal operation of the player.*
- *Incorrect operation of firmware upgrading may cause the player working abnormally. Please read the manual carefully before operation and firmware upgrading should be operated by the people with basic knowledge in computer operation.*
- *The upgrading firmware is specially programmed for this player only and not suitable for other serial players, and other firmware is not suitable for this player as well.*

## Others setting

### ● Select Folders (At Stop Submenu)

Users can save files in different folders (folders should be created on PC in advance), to manage and play files according to different types. The player supports identification of 8 level subdirectories.

1. At Stop interface. (Current example is at Music MENU, and folders can be selected at both Record and Voice MENU as well.)
2. Press **M** to enter Stop Submenu.
3. Press **M** again to enter Select Folder interface.
4. Press < / > button to select folders at root directory.
5. Press PLAY button to confirm and return the stop interface, or short press **M button** to enter next select directories as following view.
6. Press < / > **button** to select folders at this directories.
7. Press PLAY button to confirm and return the stop interface, or short press **M button** to enter next select subdirectories as following view.
8. When did not selected folder as following states.
9. Short press **M button** to return previous directory

**Note:** Independent folders can be set at corresponding mode as Music mode, Record mode and Voice mode, i.e.,

three modes are not bound to correspond with the same folder.

- **Delete File (At Stop Submenu)**

Files can be deleted at corresponding modes as Music Mode, Voice Mode.

1. At the stop interface.
2. Press **M button** to enter stop submenu
3. Press > buttons to choose “Delete” option.
4. Press **M button** to enter Delete file folder
5. Press **M button** to enter Delete file folder submenu
6. Press > button to choose “Delete” or “Delete all”, and Press **M button** to confirm and deletion starts.

**Remark:** “Delete All” means to delete all the relevant files at current mode in current folder. (For example, at Music Mode executing “Delete All”, all the music files in current files may be deleted, while recorded files without change.)








**Note:** When deleting files on PC, please take care to eject the player safely before pulling out USB cable, otherwise files may not be deleted.

- **Play Mode (Play Submenu)**

When playing music and recorded files, different play modes can be selected.

Enter play/stop submenu to enter

The first option in Play Submenu is Play Mode. The player will play files according to the mode selected.

	Normal	Play files in current folder in normal sequence and then play other files in next folders one by one
	Repeat One	Play a single music file repeatedly
	Folder	Play all music files in current folder in sequence and stop
	Folder All	Play all music files in current folder repeatedly
	Repeat All	Play all music files repeatedly
	Random	Play music files in current folder randomly
	Intro	Play the first 10 seconds of each music file in sequence in the current folder

- **Tempo Rate (Play Submenu)**

When playing music(Only for MP3 formats) or recorded files, different tempo rate can be set (faster or slower) without changing the tone and sound. Files.

1. When playing music
2. Press **M** button to enter Play Submenu is as follows:
3. Press > button to choose Tempo Rate option
4. Press **M** button to enter Tempo Rate interface is as follows:
5. Press > button to quicken tempo rate and press < button to slow down tempo rate.

- **Replay Mode**

- **A-B Replay**

1. At Music Mode or Voice Mode
2. Press **M** to enter Play Submenu.



3. Press > to select "Replay".

4. Press **M** to enter Replay.

"A" flickers in Replay Mode icon and start point is to be set.

5. Press > to set "A".

6. After "A" set, "B" flickers in icon , and endpoint B needs to be set.

7. Press > to set "B".

Replay icon is fixed and A-B segment replay begins. When replay times count up to times set in advance, the player will quit from Replay Mode. At Replay Mode, pressing < can set "A" again to select another segment. (Setting of replay times refers to "Replay Times" in the > section.

- **Replay Times (Play Submenu)**

Operating steps refer to Backlight setting.

Replay times mean that after A-B segment has been replayed up to fixed times; it will exit from Replay Mode.

- **Replay Gap (Play Submenu)**

Operating steps refer to Backlight setting.

Replay gap means the break period between different playing times (unit: second).

## AMV Convert Tool operation introduce

This tool used for transforming the media files to the AMV file\

- 1、 Run the software can pass to click the "AMV Convert Tool", click the button, after running the software, can pass to click the add file button to add the media file.
- 2、 After choose unsettled AMV files, click the button, then click " output information" column set button enters ,choose AMV files high & length is 128\*128.
- 3、 clicks directly button and tool will begin convert be selected file, as follows chart:
- 3、 After convert completes, the AMV Player will play AMV file automatically.

## Trouble Shooting

<b>No sound is heard from headphone.</b>	<ul style="list-style-type: none"> <li>✧ Check whether Volume is set “0” and connect the headphone plugs firmly.</li> <li>✧ Check whether the headphone plug is dirty.</li> <li>✧ Corrupted MP3 may make a static noise and the sound may cut off. Make sure that the music files are not corrupted.</li> </ul>
<b>Characters in LCD are corrupted</b>	<ul style="list-style-type: none"> <li>✧ Check whether the right language has been selected.</li> </ul>
<b>Download of music files fails.</b>	<ul style="list-style-type: none"> <li>✧ Check whether USB cable is damaged and is connected properly.</li> <li>✧ Check whether driver is installed correctly.</li> <li>✧ Check whether the player’s memory is full.</li> </ul>

## Specifications

Dimension	70*52*8mm		
Weight	48g		
LCM Window	1.8”		
PC connection	USB2.0(FS) (Read: 1000K Byte, Write: 1000-900K Byte)		
Flash memory	4GB		
Battery	300mA		
	Max Play time: 6-7 hours		
Record	Sample rate	8KHz	
	Recording format	ACT, MP3	
	Recording time	35hours (ACT, 128M Flash)	
MP3、WMA、ASF	Max output of headphone	(L) 10mW+ (R) 10mW (32 Ohm)	
	MP3 bit rate	8K bps – 320K bps	
	WMA、WMV bit rate	5K bps – 384K bps	
	Frequency response	20Hz to 20KHz	
	SNR	85dB	
Music format	MP1、MP2、MP3、WMA		
Working temperature	-5 to 40 °C		
Operating System	Windows98/SE/ME/2K/XP、Mac OS 10、Linux 2.4.2		