

GV-GIS

User's Manual V2.0





© 2009 GeoVision, Inc. All rights reserved.

Under the copyright laws, this manual may not be copied, in whole or in part, without the written consent of GeoVision.

Every effort has been made to ensure that the information in this manual is accurate. GeoVision is not responsible for printing or clerical errors.

GeoVision, Inc.

9F, No. 246, Sec. 1, Neihu Rd.,

Neihu District, Taipei, Taiwan

Tel: +886-2-8797-8377

Fax: +886-2-8797-8335

<http://www.geovision.com.tw>

Trademarks used in this manual: *GeoVision*, the *GeoVision* logo and GV series products are trademarks of GeoVision, Inc. *Windows* and *Windows XP* are registered trademarks of Microsoft Corporation.

November 2009

Contents

Chapter 1 Introduction.....	1
1.1 Features	2
1.2 System Requirements.....	3
1.3 Overview of GV-GIS.....	5
1.3.1 Main Screen	5
1.3.2 Toolbar.....	6
1.3.3 Event List.....	8
Chapter 2 Getting Started	9
2.1 Installing the GV-GIS.....	9
2.2 Creating Host Accounts.....	11
2.2.1 Creating a Mobile Host.....	11
2.2.2 Creating a Fixed Host	12
2.3 Connecting Hosts to the GV-GIS	14
2.3.1 Connecting a Mobile Host.....	14
2.3.2 Connecting a Fixed Host.....	15
Chapter 3 Tracking Operations for Mobile Hosts.....	16
3.1 Starting the Tracking Services.....	16
3.2 Tracking Features	16
3.3 Viewing Live Video.....	19
3.3.1 Colorful Mode	20
3.4 Playing Back GPS Tracks	21
3.4.1 Setting Playback Default Time Range.....	23
3.4.2 Showing the Time when a Host Passed by a Point.....	24
3.4.3 Showing GPS Tracks while retrieving the recordings ..	24
3.5 Tracking Multiple Hosts	25
3.5.1 Tracking Locations	25
3.5.2 Tracking Addresses	26
3.6 Detecting Detours	27
3.6.1 Defining a Detection Area	27
3.6.2 Planning a Detection Route	28

3.7	Detecting Idle Speed	30
3.8	Detecting Over Speed	32
3.9	Viewing a List of Detection Settings	33
3.10	Searching for Places and Devices	34
Chapter 4	Monitoring Operations for Fixed Hosts	38
4.1	Starting the Monitoring Services	38
4.2	Monitoring Features	39
4.2.1	Fixed Host Icon	39
4.2.2	Camera Icon	40
4.2.3	Output Icon	41
4.3	Detecting Motion and Input-Triggered Events	41
4.4	Retrieving Recorded Video	43
4.4.1	Instant Playback	43
4.4.2	Remote ViewLog	46
Chapter 5	Advanced Operations	47
5.1	Creating an E-Map	47
5.1.1	Configuring E-Map Icon Settings	48
5.2	Adding a Place	49
5.3	Saving a View	50
5.4	Getting Driving Directions	51
5.5	Self-Defining Event Colors	52
5.6	Showing Host Position on an Alarm Event	53
5.7	Applying Longitude and Latitude Positions on Fixed Hosts	53
5.8	Monitoring GV-I/O Boxes	55
Chapter 6	Event Log Browser	56
6.1	Opening the Event Log	58
6.2	Filtering the Event Log	59
6.3	Backing up the Event Log	60
6.4	Printing the Event Log	62
Chapter 7	System Configurations	63
7.1	Layout Settings	63

7.2	Network Settings	64
7.3	Event Log Settings	65
7.4	Remote ViewLog Settings	66
7.5	Alert Intervals	67
Chapter 8	Notification Settings	68
Chapter 9	Output Alerts	70
9.1	Adding Output Devices	70
9.1	Forcing Outputs of GV-GIS	71
9.2	Forcing Outputs of a Host	71
Chapter 10	SMS Alerts	72
10.1	Setting SMS Server	72
10.2	Connecting to SMS Server	74
10.3	Sending SMS	74
10.4	Inserting ID and Camera Name to Alert Messages	75
Chapter 11	E-Mail Alerts	77
11.1	Setting Mailbox	77
11.1.1	Setting up the mailbox	77
11.1.2	Sending a Test E-Mail	78
11.2	Sending E-Mail	78
Chapter 12	Failover Support	79
Appendix	81	
A.	Dongle Options	81
B.	Upgrading the Black Dongle	81
C.	Shortcut Keys	83
D.	Specifications	84

Chapter 1 Introduction

The GV-GIS is a GIS (Geographic Information System) based central management system for GeoVision devices.

The vehicle tracking and location verification remotely from the GV-GIS is made possible by the GPS receiver installed in GV-Video Server and GV-Compact DVR to constantly obtain the GPS data (vehicle coordinates and speed) from the satellite, and through mobile internet connection (e.g. UMTS, EDGE, GPRS, GSM, etc) to transmit the GPS data to the GV-GIS.

Besides real-time vehicle tracking, you can also monitor the location of cameras and the status of I/O devices from the DVR devices, without GPS functions.

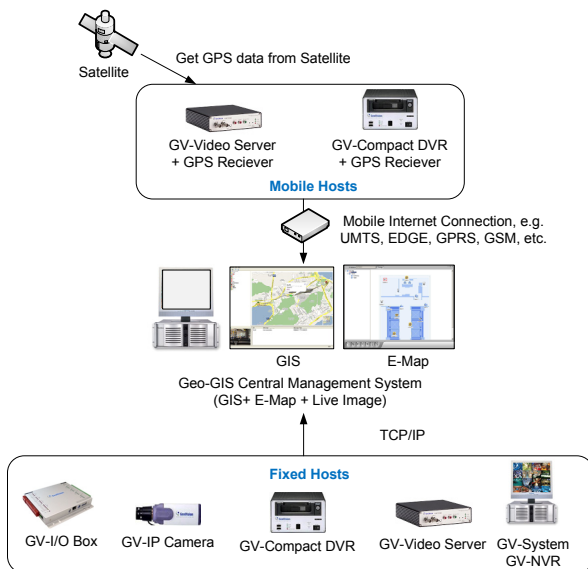


Figure 1-1

1.1 Features

- GIS central management system
- 500 vehicles tracking at one time
- Real-time vehicle GPS coordinates
- Real-time vehicle video image
- Google Maps, Microsoft Virtual Earth and user-defined maps support
- GPS Tracks playback
- Detour Detection
- Idle Speed Detection
- Over Speed Detection
- E-Map Support
- Motion and Input-triggered alert for fixed hosts
- Customized landmark (interested points) setting
- Integration with GV-I/O Box, GV-Video Server, GV-Compact DVR, GV-IP Camera, GV-System and GV-NVR

1.2 System Requirements

1. The minimum system requirements to run the GV-GIS:

Standard Version

	10 Mobile-Host Map Views	10 Mobile-Host Map Views with up to 10 Megapixel Live Views
OS	Windows 2000 / XP / Server 2003 / Vista	
CPU	Pentium 4 3.0 GHz with HT	Core 2 Quad, 2.4 GHz
Memory	2 x 512 MB Dual Channels	2 x 1 GB Dual Channels
Hard Disk	The hard disk space required to install GV-VIS (Standard Version) must be at least 1 GB.	
VGA	NVIDIA GeForce 8600 GT / ATI Radeon X1650	
DirectX	9.0c	
Browser	Microsoft Internet Explorer 7.x	

Advanced Version (Up to 500 Mobile Hosts)

	16 Mobile-Host Map Views	16 Mobile-Host Map Views with up to 16 Megapixel Live Views
OS	Windows 2000 / XP / Server 2003 / Vista	
CPU	Pentium 4 3.0 GHz with HT	Core 2 Quad, 2.4 GHz
Memory	2 x 1 GB Dual Channels	
Hard Disk	The hard disk space required to install GV-VIS (Advanced Version) must be at least 1 GB.	
VGA	NVIDIA GeForce 8600 GT / ATI Radeon X1650	
DirectX	9.0c	
Browser	Microsoft Internet Explorer 7.x	

Note: Currently the 64-bit Windows operating system is not supported.

2. DirectX 9.0C installed. Available from the software DVD.
3. Microsoft Internet Explorer 7.x.
4. A GV-GIS dongle is required for the GV-GIS software to work.
 - **The primary USB dongle provides 10 vehicle connections. The number limit is 500 connections with the increment of 5 connections at a time.**

Inform your sales representative the required number of vehicle connections so the dongle can be delivered upon your requirements. Otherwise, you can upgrade your primary dongle later by following the instructions in *Appendix B. Upgrading the Black Dongle*.

For example, if you need 33 vehicle connections and already have a primary dongle, you can upgrade the primary dongle from 10 to 35 connections.

- It is required to install drivers from the software DVD for the USB dongle to work.

Note:

1. For types of GV-GIS dongles, see *Appendix A. Dongle Options*.
 2. For the Defog and Stabilizer functions on Live View, the GV-GIS dongle with AVP function is required.
-

1.3 Overview of GV-GIS

Get yourself familiar with the Main Screen, Toolbar and Event List, as it will help you when you read further in the following sections.

1.3.1 Main Screen

Microsoft Virtual Earth is used as Map API (Application Program Interface) in this example.

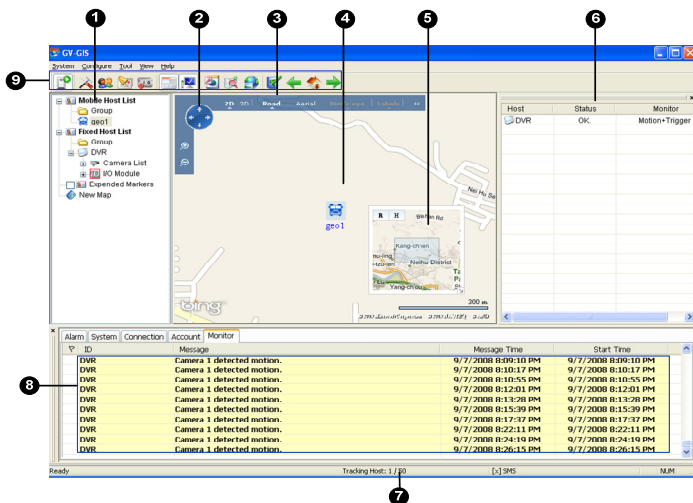



Figure 1-2

No.	Name	Description
1	Host List	Include these types of folders: Mobile Host List, Fixed Host List, Expended Markers, and New Map.

2	Navigation Controls	Use these to zoom, look and move around.
3	Views	Click these to display different views, including aerial images and street level imagery.
4	Map	This area displays the tracking map, E-Map and query results.
5	Overview Map	This view shows the location of current map view.
6	Monitor List	Activate monitoring of events of video motion and input trigger occurred at the fixed host. See 4.3 <i>Detecting Motion and Input-triggered Events</i> .
7	Tracking Host Indicator	Indicate the connected mobile hosts. Take the picture  for example. Three (3) mobile hosts are connecting to the GV-GIS while GV-GIS supports the maximum of 50 mobile hosts.
8	Event List	See <i>Event List</i> later.
9	Toolbar	See <i>Toolbar</i> later.

1.3.2 Toolbar

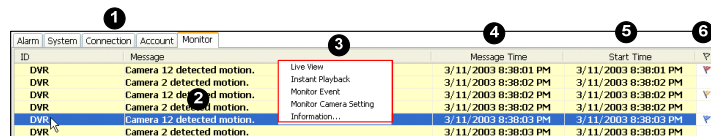


Figure 1-3

No.	Name	Description
1	Start/Stop Service	Start or stop the GV-GIS services.
2	System Configuration	Configure the system. See <i>Chapter 7 System Configurations</i> .
3	Account	Configure host accounts. See 2.2 <i>Creating Host Accounts</i> .

4	Notification Setting	Configure which event to send notifications when it happens. See <i>5.10 Notification Settings</i> .
5	Local I/O Device Control	Open the list of available I/O devices on your system.
6	Event List	Open or close the Event List on the main screen.
7	Monitor List	Open or close the Monitor List on the main screen. See <i>4.3 Detecting Motion and Input-triggered Events</i> .
8	Event Log Browser	Search for log events. See <i>Chapter 6 Event Log Browser</i> .
9	Range Query	Search for places and devices. See <i>3.9 Searching for Places and Devices</i> .
10	Track List	Track addresses of multiple mobile hosts in real time. See <i>3.5 Tracking Multiple Hosts</i> .
11	Map Setting	Configure the settings for E-Map icons. See <i>5.1 Creating an E-Map</i> .
12	Up One Level Map	Display the previous map.
13	Map Home	Display the tracking map.
14	Down One Level Map	Display the next map.

1.3.3 Event List



Alarm System Connection Account Monitor									
ID	Message		Message Time	Start Time					
DVR	Camera 12 detected motion.	Live View	3/11/2003 8:38:01 PM	3/11/2003 8:38:01 PM					
DVR	Camera 2 detected motion.	Instant Playback	3/11/2003 8:38:02 PM	3/11/2003 8:38:02 PM					
DVR	Camera 12 detected motion.	Monitor Event	3/11/2003 8:38:02 PM	3/11/2003 8:38:02 PM					
DVR	Camera 2 detected motion.	Monitor Camera Setting	3/11/2003 8:38:02 PM	3/11/2003 8:38:02 PM					
DVR	Camera 12 detected motion.	Information...	3/11/2003 8:38:03 PM	3/11/2003 8:38:03 PM					
DVR	Camera 2 detected motion.		3/11/2003 8:38:03 PM	3/11/2003 8:38:03 PM					

Figure 1-4

No.	Name	Description
1	Event Type	Include these types of events: Alarm, System, Connection, Account, and Monitor.
2	Message	Indicate associated information for each event type.
3	Selection Menu	Right-clicking a message in the Alarm, Connection and Monitor tabs allows you to instantly access some useful functions.
4	Message Time	Indicate when the GV-GIS receives an event.
5	Start Time	Indicate when an event happens at the host.
6	Flag	Flag an event for later reference.

Chapter 2 Getting Started

2.1 Installing the GV-GIS

To install the GV-GIS program to your computer:

1. Insert the Software DVD to your computer. It will run automatically and a window pops up.
2. Select **GV-GIS** and follow the on-screen instructions.
3. The first-time user will be prompted for a License Agreement.

Note *"The license of API is excluded from GeoVision products and you should apply for the license of the API by yourself in advance."*

Read through the license terms before you click **I understand and agree** to continue.

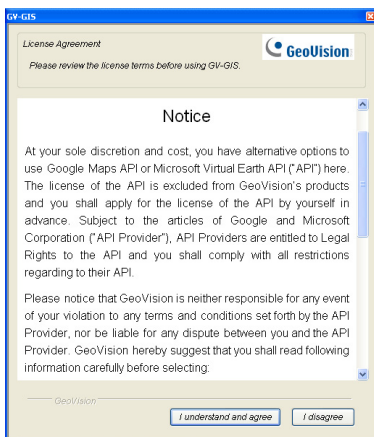


Figure 2-1

- From the “Please Select a Map API” drop-down list, select a Map API (Application Program Interface). For Google Maps, you need to sign up for an API key from Google website (<http://code.google.com/apis/maps/signup.html>), and enter the API key in the **Please enter the map authorization key or license key field**.

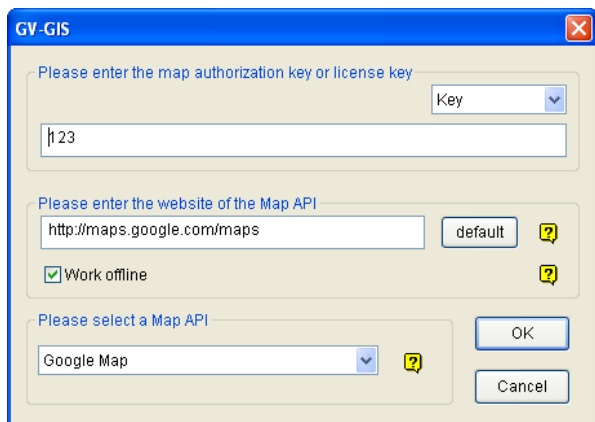


Figure 2-2

- Click **Submit** to open the main screen.

Note:

- Some GV-GIS features may not be available to your location depended on Maps API.
 - If you want to use the maps created by yourself, overwrite the files at :\\GV-GIS folder\\GIShtm-User, and select **User Defined** from the “Please Select a Map API” drop-down list.
 - If you are the paid-client of Google Maps, select **Client** from the “Please enter the map authorization key or license key” drop-down list; otherwise select Key.
-

2.2 Creating Host Accounts



Create host accounts for the DVR devices you wish to track and manage with the GV-GIS. The GV-GIS supports two types of hosts: **Mobile Host** and **Fixed Host**. Mobile hosts refer to those devices equipped with GPS receivers and installed in vehicles, while fixed hosts refer to those without GPS functions and installed at fixed locations.

2.2.1 Creating a Mobile Host

1. On the toolbar, click the **Account** button (No.3, Figure 1-3). The Account window appears.
2. Click the **Add A Group** button to create a group folder if necessary.
3. Click the **Add A Subscriber** button to create a host account.
4. Assign **ID** and **Password** for the host to log onto the GV-GIS.
5. Other information of the host such as Name, TEL, Mobile, Address and E-Mail are optional entries.
6. The **Visible Level in Map** option allows you to set the minimal zoom level of the host icon on the map. For example, if you set it to 14, you can only see the host icon on the map when zooming in to the level 14 or above. Setting the level to 0 makes the host icon always visible regardless of zoom level.

After creating host accounts, click the **Start/Stop Service** button (No.1, Figure 1-3) on the toolbar to start the GV-GIS service. Meanwhile, hosts must be configured and connected to the GV-GIS. See *Connecting Hosts to the GV-GIS* later for how hosts can log onto the GV-GIS.

2.2.2 Creating a Fixed Host

1. On the toolbar, click the **Account** button (No.3, Figure 1-3). The Account dialog box appears.
2. Click the **Add A Group** button to create a group folder if necessary.
3. Click the **Add A Fixed Host** button to create a host account.
4. In the dialog box,
 - A. Name the host in the **Host ID** field and select a device type from the **Host Type** drop-down list.
 - B. In the Connection Information section, type **IP Address**, **Login ID** and **Password** to log onto the host. Use the default communication ports, or modify port values if necessary.
 - C. In the Device Information section, click the **Update Information** button  to request the number of cameras and I/O modules installed from the host.
 - D. If you want to disable the monitoring functions to certain cameras, click the **Camera Monitor Setting** button . For details, see 4.3 *Detecting Monitor and Input-Triggered Events*.
 - E. For the **Apply the Device's GPS positions** option, see 5.7 *Applying Longitude and Latitude Positions on Fixed Hosts*.
 - F. Subscriber Information and Note are optional entries

After creating host accounts, some hosts must be configured and connected to the GV-GIS. See *Connecting Hosts to the GV-GIS* later for how hosts can log onto the GV-GIS.

Host Information

Host ID: Video Server
Host Type: Video Server

Subscriber Information

Name:
TEL:
Mobile: 1
Address:
E-Mail:
Visible Level in Map: 0

Note

GPS Position: Unavailable

Connection Information

IP Address: 192.168.1.21
Login ID: admin
Password: ****
Http Port: 80 (Default)
Command Port: 10000 (Default)
Log Port: 5552 (Default)

Device Information

Visible Level in Map: 15
Number of Cameras: 2
Number of Module: 1
Module 1
of Input: 8 # of Output: 16
☐ Apply the Device's GPS positions

OK Cancel

Figure 2-3

Note:

1. The **Visible Level in Map** option in the “Subscriber Information” section is to set the minimal zoom level of the host icon on the map. The same option in the “Device Information” section is to set the minimal zoom level of camera and I/O icons on the map. For details on the option, see step 6 in 2.2.1 *Creating a Mobile Host*.
2. The communication ports of DVR (Command Port 3388, Data Port 5611 and Log Port 5552) should match Control Center ports on that DVR.

2.3 Connecting Hosts to the GV-GIS

You need to configure hosts in order to access the GV-GIS service remotely through a network connection.

2.3.1 Connecting a Mobile Host

To perform the GPS tracking remotely from the GV-GIS, first make sure a GPS receiver is connected to the mobile host and its GPS function is activated. Then, the mobile internet connection (e.g. UMTS) on the host must be activated so that the GV-GIS can access the GPS data through the connectivity. For details on GPS and mobile internet connection, see GV-Video Server or GV-Compact DVR User's Manual.

1. Open the configuration interface of the GV-Video Server or GV-Compact DVR, and select **GV-GIS**.

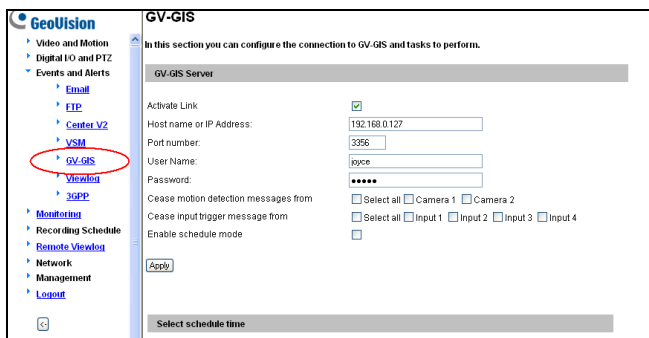


Figure 2-4

2. Select **Activate Link**.
3. Type IP address or domain name of the GV-GIS.
4. Keep **Port number** as default, or change it if necessary.

5. Type **User Name** and **Password** used to log onto the GV-GIS. These entries must match ID and Password created on the GV-GIS. See *Creating Host Accounts* earlier in this chapter.
6. Click **Apply** to start connection.

When the connection is established between the mobile host and GV-GIS, a message “*Status: Connected. Connected Time: xxx*” will be displayed at the bottom of the configuration page.

2.3.2 Connecting a Fixed Host

- **GV-System, GV-NVR:** To establish the connection, activate the **Control Center Service**.
- **GV-Video Server, GV-Compact DVR, GV-IP Camera, GV-IP Speed Dome:** It is not required to set up these fixed IP devices for connection.

Chapter 3 Tracking Operations for Mobile Hosts

You can track locations of mobile hosts in real time.

3.1 Starting the Tracking Services

After the GV-GIS service is started, drag the mobile host icon to the map. Since the host is GPS-enabled, the host icon will automatically move to its correct location on the map.

3.2 Tracking Features

On the map or the Mobile Host List, right-click the mobile host icon to have these tracking features:

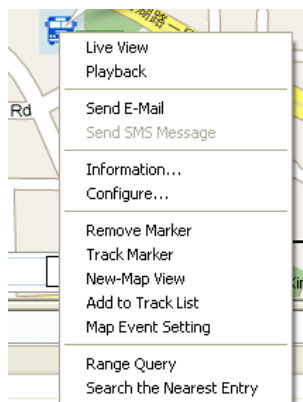

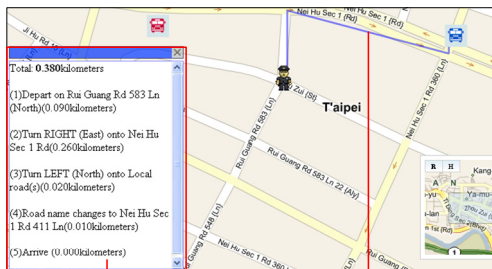


Figure 3-1

Feature	Description
Live View	Display live view. See <i>3.3 Viewing Live Video</i> .
Playback	Play back the GPS tracks recorded at the mobile host. See <i>3.4 Playing Back GPS Tracks</i> .
Send E-mail	Send an e-mail notification. See <i>Chapter 11 E-Mail Alerts</i> .
Send SMS Message	Send a SMS notification. See <i>Chapter 10 SMS Alerts</i> .
Information	Display the host information.
Configure	Link to the configuration interface of the mobile host, such as GV-Video Server and GV-Compact DVR.
Remove Marker	Remove the host icon from the map.
Track Marker	<p>Always keep the host icon staying at the center of the map when the vehicle moves. A yellow block similar to the following figure will be displayed on the map. Clicking the yellow block will stop the host tracking.</p> 
New-Map View	Track the host in a separate window. See <i>3.5 Tracking Multiple Hosts</i> .
Add to Track List	Create a Track List to track multiple hosts. See <i>3.5 Tracking Multiple Hosts</i> .
Map Event Setting	Configure detour, idle speed and over speed detection. See <i>3.6 Detecting Detours</i> , <i>3.7 Detecting Idle Speed</i> and <i>3.8 Detecting Over Speed</i> .
Range Query	Search for places and devices. See <i>3.9 Searching for Places and Devices</i> .

Search the Nearest Entry

Allow you to search for a desired host or marker. The GV-GIS will display a route and provide step-by-step directions from the host to that target. Note that depending on Maps API, this feature may not be available for your location.



The window provides the estimated distance and step-by-step directions.

The blue line provides the possible route from the selected host to the target.

3.3 Viewing Live Video

To view live video, right-click one host or camera icon and select **Live View**.

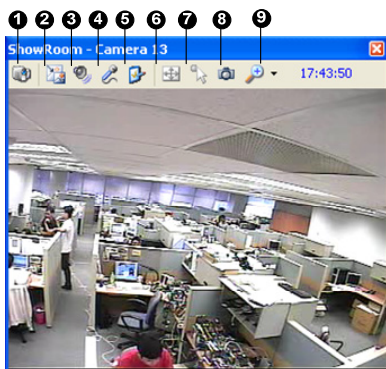


Figure 3-2

The controls on the Live View window:

No.	Name	Description
1	Change Camera	Switches to another camera of the same host.
2	Change Size	<ul style="list-style-type: none"> ■ Size: Changes the size of the live video. The size corresponds to the video resolution set at the host. ■ Defog: Enhances image visibility. ■ Stabilizer: Stabilizes live images. ■ PIP View: Refers to Picture and Picture. You can zoom in on the video. ■ PAP View: Refers to Picture and Picture. You can create a split video effect with multiple close-up views on the video.
3	Audio	Accesses audio from the host.
4	Microphone	Enables speaking to the host. A microphone must be installed properly in the computer.

5	Setting	Changes the audio and video settings. Defog settings are for adjusting the image color (Normalization) and for decreasing the fogginess of the image (Sampling Range).
6	PTZ	Activates the PTZ control.
7	Visual Automation	Allows you to change the current state of an electronic device, e.g. light ON, by clicking on its image directly. The function is only available when the same function is set at the host.
8	Snapshot	Takes the snapshot of the displayed live video.
9	Zoom	Enlarges the video by selecting 1.0x, 2.0x and 3.0x.

Note: The options below are only available when the GV-GIS dongle with AVP function is used:

Defog and **Stabilizer** options in the Change Size button; **Defog** settings in the Setting button.

3.3.1 Colorful Mode

You can enhance the coloring of live video to have more vivid and saturated images. Click the **Configure** button from the menu bar, select **DirectDraw Configuration**, select **Use Colorful Mode**, and restart the GV-GIS program for the mode to take effect.

3.4 Playing Back GPS Tracks

You can play back the GPS tracks recorded on the computer running the GV-GIS.

1. Right-click a mobile host and select **Playback**. You can also right-click an **Alarm** event on the Event List. This dialog box appears.

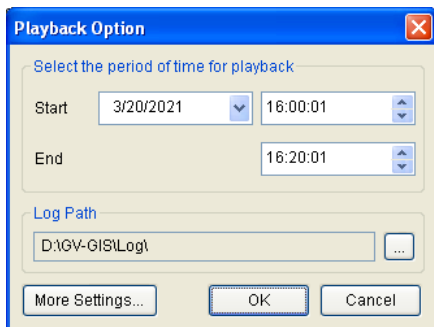


Figure 3-3

- Specify the date and a period of time of the recorded tracks. Keep the default log path **C:\GV-GIS\Log**, or modify it if necessary. Then click **OK**. The Playback window appears.

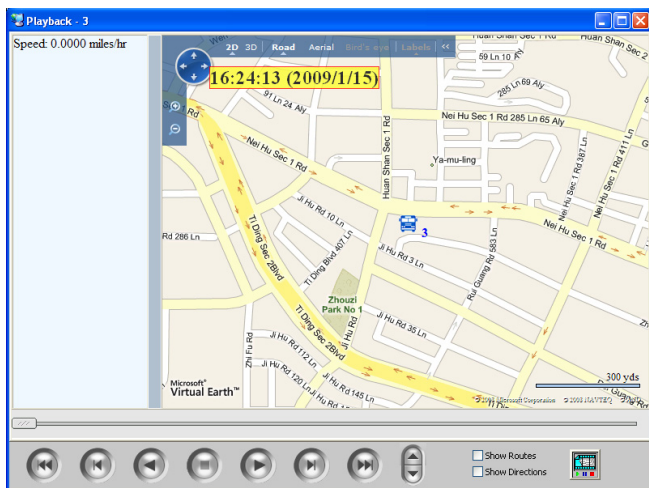



Figure 3-4

- Click the **Play** button to start.
- Select **Show Route** if you want each GPS track to be drawn as a solid line. Select **Show Directions** to display a direction icon for every GPS track in the map.
- Select the **Instant Playback** button  if you want to retrieve recorded video from the mobile host. A valid ID, Password, IP address and Port number are required to log on to the host.

Note: For Instant Playback, the mobile host needs to grant the remote access from the GV-GIS by activating the **Remote ViewLog** function on itself. For detailed playback operations, see **4.4.1 Instant Playback**.

3.4.1 Setting Playback Default Time Range

Setting the default time range for playback can save time for GV-GIS operators if they always play back the same time length of GPS tracks.

1. Click the **More Settings** button on the Playback Option dialog box (Figure 3-3). This dialog box appears.

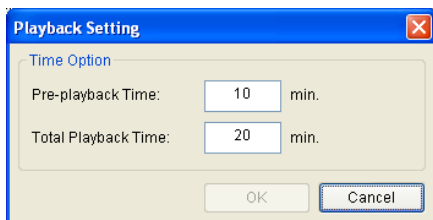


Figure 3-5

2. Set **Pre-playback Time** to define the default number of minutes prior to the Message Time when the selected **Alarm** event was triggered. This setting effects the Start time in the Playback Option (Figure 3-3).
3. Set **Total Playback Time** to define the default total length that the playback will play. This setting effects the End time in the Playback Option (Figure 3-3).
4. Click **OK**.

For example, if Pre-playback Time is set to 10 minutes and Total Playback Time is set to 30 minutes. When the message time of a selected Alarm event is at 11:30:00, the Start time will begin at 11:20:00 and End time will finish at 11:50:00.

Note: When the Playback is accessed by right-clicking a mobile host icon, the Start and End time are based on your current computer time instead of the message time of an Alarm event.

3.4.2 Showing the Time when a Host Passed by a Point

You can obtain the exact time when a host passed by a point. To do this, select **Show Rout**, click a point along the route and select **Show the time when the host passed by here**. A small window will appear showing the time when the host passed by the point on the map.

3.4.3 Showing GPS Tracks while retrieving the recordings

You can also view GPS tracks while playing recorded video from a mobile host. Click the **Instant Playback** button (Figure 3-4) to retrieve the recordings, right-click on the Single Player window, select **Render** and select **Display GPS** to display the GPS tracks with the recordings.

3.5 Tracking Multiple Hosts

The GV-GIS can track locations of multiple mobile hosts on the graphical map and provide a list of street addresses in real time.

3.5.1 Tracking Locations

You can track the locations of up to 16 mobile hosts simultaneously in separate windows or a single window.

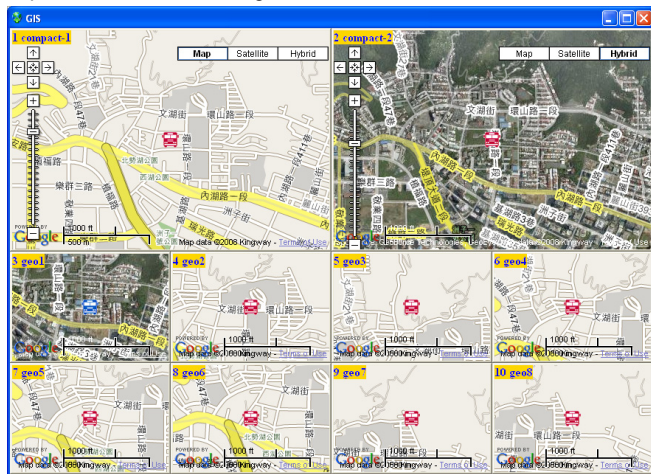


Figure 3-6 A single window

1. On the map or the Mobile Host List, right-click the desired mobile hosts, and select **New-Map View** to start tracking.
2. By default, the tracked hosts are displayed in separate windows. To display all of them on a single window, click the **System Configuration** button (No. 2, Figure 1-3) on the toolbar and change **Multi-Map Style** from Multiple Windows Mode to Single Window Mode.

- Right-clicking on the displayed window can have the options of changing map type, zooming in, zooming out, or setting the host as the tracking target on the main screen (the **Exchanged with main screen** option).

Tip: The Lock  icon can keep the tracking window always on the top of other windows.

3.5.2 Tracking Addresses

You can track street addresses of multiple mobile hosts in real time.

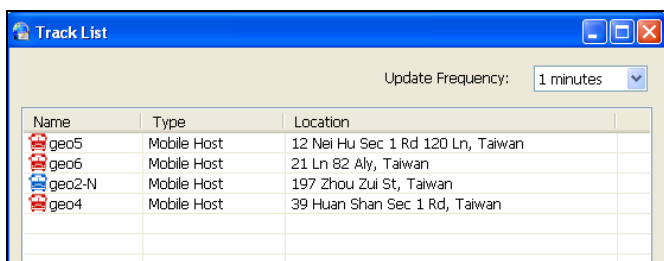


Figure 3-7

- On the map or the Mobile Host List, right-click a group or a mobile host, and select **Add to Track List**. The Track List appears.
- To add another group or mobile host, keep the Track List open. Then right-click that group or host, and select **Add to Track List**.
- Use **Update Frequency** to select how often the GV-GIS will update the GPS data.
- Minimize or close the Track List. Click the **Track List** button (No 10. Figure 1-3) on the toolbar can restore the List anytime.

3.6 Detecting Detours

A detour message will be generated in the Alarm tab of Event List when the vehicle moves out of the defined area and planned route.

To access this function, right-click a mobile host and select **Map Event Setting**.

Alarm System Connection Account Monitor	
ID	Message
geo1	Out of Detection Area.
geo1	Out of Detection Route.

Figure 3-8 Detour Messages

3.6.1 Defining a Detection Area

1. Select **Set Detection Area** on the left panel. This window appears.

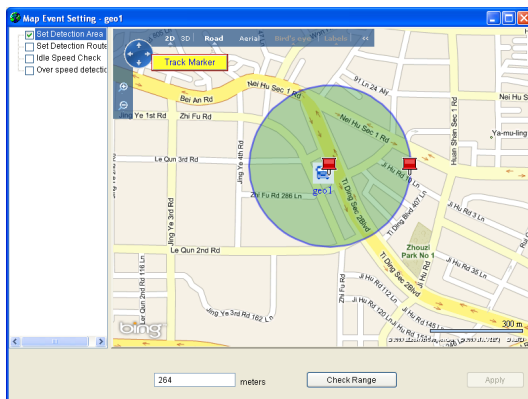


Figure 3-9

2. To define the detection range, follow one of these ways:
 - A. Specify the radius distance from the mobile host in meters or feet. Clicking **Check Range** will display a circular area on the map based on your specification.
 - B. Use the markers to move, increase or decrease the detection area.
3. Click **Apply**.

When the mobile host moves out of the defined area, the message “Out of Detection Area” will appear in the Event List. When the mobile host moves in the defined area, the message “*Within the Detection Area*” will be displayed.

3.6.2 Planning a Detection Route

1. Select **Set Detection Route** on the left panel. This window appears.

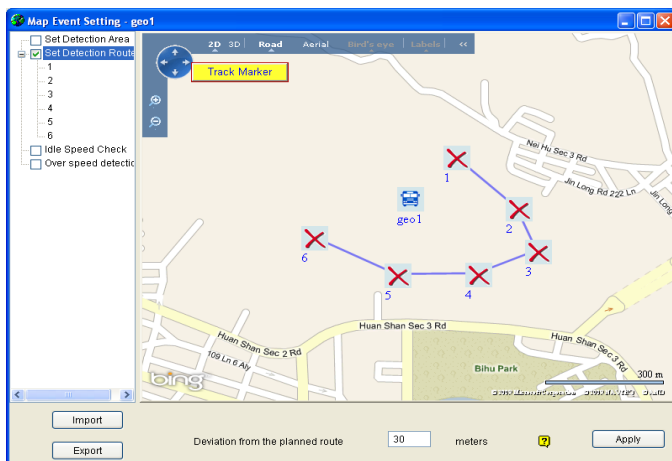


Figure 3-10

2. To plan your route, right-click on the map to set markers. Take the above figure as example. Six markers are set in the planned route.
3. In the **Deviation from the planned route** field, specify the maximum distance in meters or feet that allows the mobile host to deviate from the planned route to any distance.
4. You can click **Export** to save the settings to another location, or **Import** to apply the pre-defined route to the mobile host.
5. Click **Apply**.

When the mobile host moves out of the planned route, the message “*Out of Detection Route*” will appear in the Event List. When the mobile host moves in the planned route, the message “*Within the Detection Route*” will be displayed.

3.7 Detecting Idle Speed

An idle speed message will be generated in the Alarm tab of Event List whenever a vehicle does not cover the required distance in the given time. For example, you set a threshold that a vehicle should cover a distance of 1 km in 5 minutes. When the vehicle only covers 0.75 km in 5 minutes, the alert message will appear.

Alarm System Connection Account Monitor	
ID	Message
geo2-N	Detected Idle Speed.

Figure 3-11 Idle Speed Message

1. Right-click a mobile host and select **Map Event Setting**. This dialog box appears.

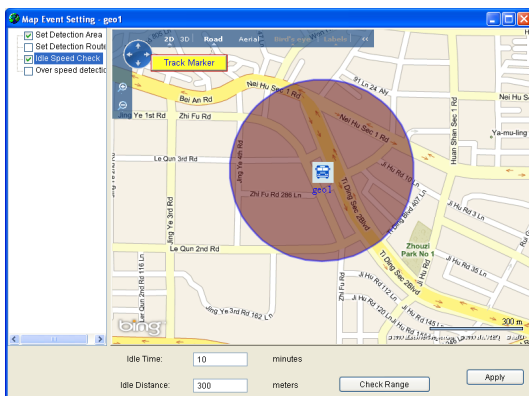


Figure 3-12

2. Select **Idle Speed Check** on the left panel.
3. In **Idle Time**, specify the time threshold.

4. In **Idle Distance**, specify the distance threshold.
5. Clicking **Check Range** will display a circular area on the map based on your specification. Click **OK** to apply the settings.

When the mobile host does not cover the specified distance in the given time, the message “Idle Speed is detected” will appear in the Event List. When the mobile host meets the threshold again, the message “Speed threshold is met” will be displayed.

3.8 Detecting Over Speed

An over-speed message will be generated in the Alarm tab of Event List whenever a vehicle has exceeded the assigned speed limit. The excessive speed that triggered the event will also be shown, e.g. 8,667000 km/hr, as illustrated below.

Alarm System Connection Account Monitor			
ID	Message	Message Time	
GIS7	Out of Detection Route.	7/29/2009 2:56:43 PM	
GIS9	Within the Detection Area.	7/29/2009 2:56:43 PM	
GIS5	Out of Detection Area.	7/29/2009 2:56:43 PM	
GIS5	Over Speed is detected. [8.667000 km/hr]	7/29/2009 2:56:44 PM	
GIS6	Out of Detection Route.	7/29/2009 2:56:49 PM	
GIS15	Out of Detection Route.	7/29/2009 2:56:49 PM	
VS04	GPS signal is lost. [ID: VS04].	7/29/2009 2:56:51 PM	
VS	GPS signal is lost. [ID: VS].	7/29/2009 2:56:51 PM	
GIS15	Within the Detection Route.	7/29/2009 2:56:58 PM	

Figure 3-13

1. Right-click a mobile host and select **Map Event Setting**. This dialog box appears.

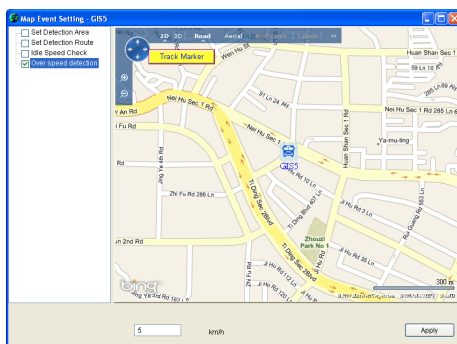


Figure 3-14

2. Select **Over Speed Detection** on the left panel.
3. Set the speed limit at the bottom of the window.

4. Click **Apply**.

Whenever the mobile host goes over the speed, the message “ Over Speed is detected” with the average driving speed per four will be shown in the Event List.

3.9 Viewing a List of Detection Settings

You can view a complete list of detection settings configured to the mobile hosts. On the menu bar, click **View** and select **Map Event List**. This dialog box will appear. The symbol “O” indicates the Detection Area, Detection Route, Idle Speed or Over Speed has been configured on the host; otherwise, the symbol “X” will be used.

ID	Area	Route
geo1	O	X
geo2-N	X	O
geo3	O	X
geo4	O	O
geo5	O	O

Figure 3-15

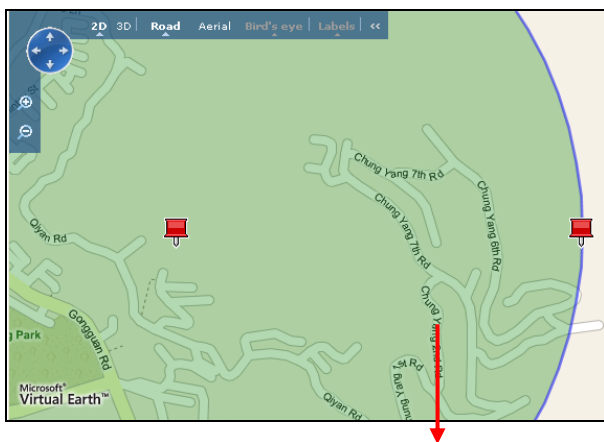
3.10 Searching for Places and Devices

You can search for any devices and places within a defined area.

1. Right-click on the map, and select **Range Query**. The Range Query dialog box appears and a circular search area is displayed on the map too.
2. To define the search area, you have two options.

Option 1: Directly drag the markers on the search area.

- Use the marker at the center of the search area to move the circle to the appropriate location. Use the marker at the rim of the search area to increase or decrease the search range.



Circular search area on
the Microsoft Virtual

Figure 3-16

Option 2: Customize the settings in the Range Query dialog box.

You can use one of these methods to define the search area:

- Specify the latitude and longitude of the center of the search area, or the address of the center. Click **Move to** to move the circular area to your specified location.

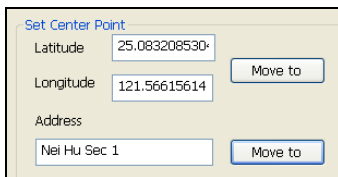
A dialog box titled "Set Center Point" with a light beige background. It contains three input fields: "Latitude" with the value "25.083208530", "Longitude" with the value "121.56615614", and "Address" with the value "Nei Hu Sec 1". Each input field has a corresponding "Move to" button to its right.

Figure 3-17

Note: To search for an address, use these formats for addresses:

"Address, city, state" or "Address, city, ZIP".

- Specify the speed of the vehicle in kilometers or miles per hour and the time in minutes the vehicle might travel. Click **Check Range** to display the range of the search area on the map based on your specification.

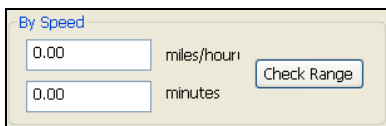
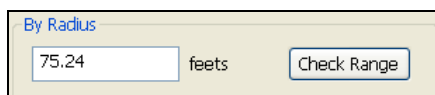
A dialog box titled "By Speed" with a light beige background. It contains two input fields: "0.00" for "miles/hour" and "0.00" for "minutes". A "Check Range" button is located to the right of the input fields.

Figure 3-18

- Specify the radius of the search area in meters or feet. Click **Check Range** to display the range of the search area on the map based on your specification.

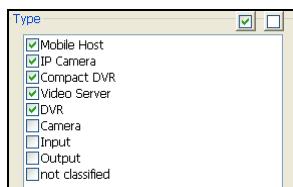


By Radius

75.24 feets

Figure 3-19

- Select the type of device or place you are looking for.



Type

- ☒ Mobile Host
- ☒ IP Camera
- ☒ Compact DVR
- ☒ Video Server
- ☒ DVR
- ☐ Camera
- ☐ Input
- ☐ Output
- ☐ not classified

Figure 3-20

- Click **Query** to display search results.

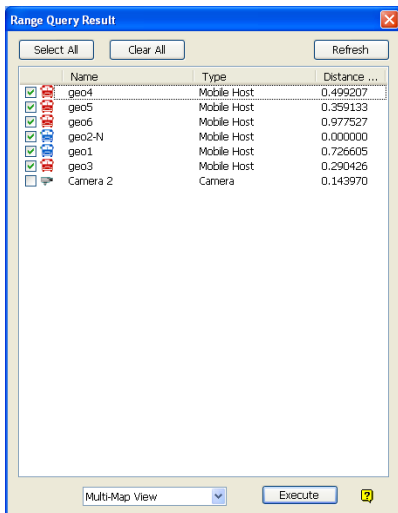


Figure 3-21

- Double-clicking any found device or place can bring it to the center of the map.
- If you want to track the found mobile hosts, select those hosts and click **Execute** to start tracking.

Note: The tracked mobile hosts are displayed in separate windows by default. If you want to display all tracked hosts in a single window, change **Multi-Map Style** in *7.1 Layout Settings*.

Chapter 4 Monitoring Operations for Fixed Hosts

You can monitor the location of a fixed host without GPS.

4.1 Starting the Monitoring Services

1. Drag the **Fixed Host**, **Camera**, **Input** and **Output** icons to their appropriate positions on either the tracking map or the created E-Map for live monitoring. For details on the E-Map, see *5.1 Creating an E-Map*.
2. You can monitor the fixed host for the alert events of video motion and input trigger. Whenever movement occurs in the images or the input device is triggered, the alert message will be generated in the Event List and the related icons will start blinking on the Host List and map to alert you. See *4.3 Detecting Motion and Input-Triggered Events*.

4.2 Monitoring Features

On the map or the Fixed Host List, right-click the Fixed Host, Camera and Output icons to have these monitoring features:

4.2.1 Fixed Host Icon

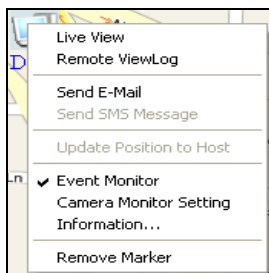


Figure 4-1

Feature	Description
Live View	Display live view. See 3.3 <i>Viewing Live Video</i> .
Remote ViewLog	Play back video recorded at the fixed host. See 4.4 <i>Retrieving Recorded Video</i> .
Send E-Mail	Send an e-mail notificaiton. See <i>Chapter 11 E-Mail Alerts</i> .
Send SMS Message	Send a SMS notification. See <i>Chapter 10 SMS Alerts</i> .
Update Position to Host	Update the fixed host's position to its Web interface. See 5.7 <i>Applying Longitude and Latitude Positions on Fixed Hosts</i> .

Event Monitor	Activate event monitoring. See 4.3 <i>Detecting Motion and Input-Trigger Events</i> .
Camera Monitor Setting	Disable the monitoring functions to certain cameras. See 4.3 <i>Detecting Motion and Input-Trigger Events</i> .
Information	Display the host information.
Remove Marker	Remove the host icon from the map.

4.2.2 Camera Icon

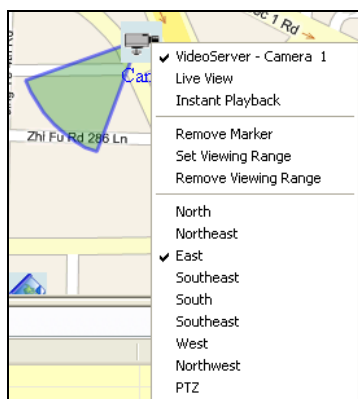


Figure 4-2

Feature	Description
Live View	Display live view. See 3.3 <i>Viewing Live Video</i> .
Instant Playback	Play back video recorded at the fixed host. See

	<i>4.4 Retrieving Recorded Video.</i>
Remove Marker	Remove the camera icon from the map.
Set Viewing Angle	Set the viewing angle of the camera.
Direction Options	Set the direction where you want the camera icon to point to, e.g. north, east and etc.
PTZ	Change the camera icon to the PTZ icon.

4.2.3 Output Icon

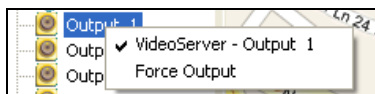


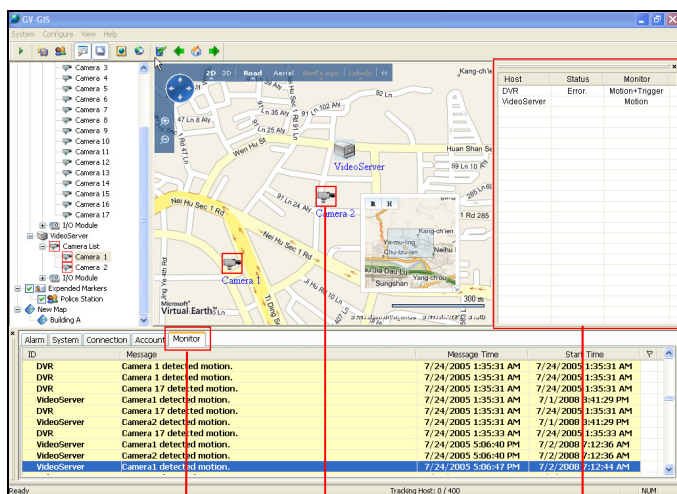
Figure 4-3

Feature	Description
Force Output	Remotely trigger the output device installed at the fixed host. For this function to work, it is required to right-click the I/O host and select Event Monitor first.

4.3 Detecting Motion and Input-Triggered Events

An alert message will be generated in the Monitor tab of Event List after video motion is detected and input device is triggered at the fixed host. Meanwhile, the related Camera and Input icons will start blinking to alert the user.

1. Right-click a fixed host to be monitored, and select **Monitor Event**. The fixed host is displayed in the Monitor List. If the List does not appear on the main screen, click the **Monitor List** button (No. 7, Figure 1-3) on the toolbar.
2. If you want to disable the monitoring functions to certain cameras, right-click the fixed host, select **Camera Monitor Setting** and clear the selections of those cameras.
3. In the Monitor List, click on the **Monitor** column. Select **Motion** to generate an alert message whenever movement occurs in the images, select **Trigger** to generate an alert message whenever the input device is triggered, or select **Motion + Trigger** to generate both types of alert messages.



Event List

Blinking Icon

Monitor List

Figure 4-4

4.4 Retrieving Recorded Video

Recorded video can be reviewed by retrieving the video from the fixed host. There are two playback options:

1. **Instant Playback:** Plays back the recorded video of a desired camera up to 5 minutes.
2. **Remote ViewLog:** Plays back the recorded video of a desired fixed host.

Note: GV-IP Camera does not support the playback function.

4.4.1 Instant Playback

Before you can review video recorded on the fixed host, the following functions must be enabled to allow remote access:

- **DVR:** Enable **Remote ViewLog Service** on Control Center Server and activate recording.
- **Video Server, Compact DVR:** Enable the **Remote ViewLog** function and activate the recording.

To retrieve recorded video, right-click the Camera icon and select **Instant Playback**. If recorded video exists, the playback window will be activated and playback will start.

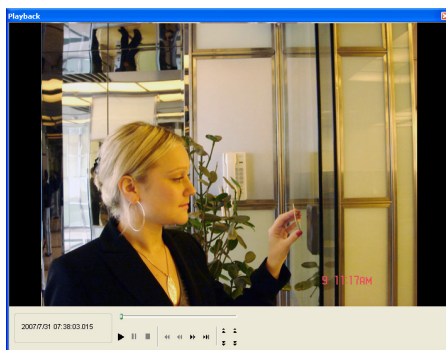
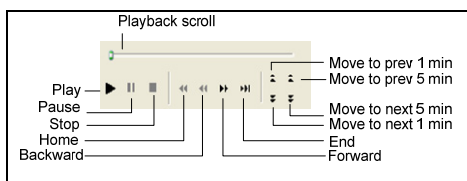


Figure 4-5



Right-click the Playback window to have the following features:

Name	Functions
Play Mode	<p>Includes these options:</p> <ul style="list-style-type: none"> • Frame by Frame: Plays back video frame by frame. • Real Time: Plays back video on real time. This mode saves waiting time for rendering, but drop frames to give the appearance of real-time playback. • Audio: Turns on or off the video sound. • Auto play next 5 minutes: Plays back video up to 5 minutes.

Render	<p>Includes these options:</p> <ul style="list-style-type: none"> • Deinterlace: Converts the interlaced video into non-interlaced video. • Scaling: Smoothens mosaic squares when enlarging a playback video, and applies the colorful mode to enhance the coloring. • Deblocking: Removes the block-like artifacts from low-quality and highly compressed video. • Defog: Enhances image visibility. • Stabilizer: Reduces camera shake. • Text overlay's camera name and time: Overlays camera name and time onto the video. • Text overlay's POS/GV-Wiegand: Overlays POS or GV-Wiegand Capture data onto the video. • Full Screen: Switches to the full screen view.
Tools	<hr/> <ul style="list-style-type: none"> • Snapshot: Saves a video image. • Save as AVI: Saves a video as avi format. • Download: Downloads the video clip from the DVR or IP video device to the local computer. <hr/>

Note: The Defog and Stabilizer only work when the functions have been applied on the recording from the DVR.

4.4.2 Remote ViewLog

Before you can review video recorded on the fixed host, the following functions must be enabled to allow remote access:

- **DVR:** Enable **Remote ViewLog Service** on Control Center Server.
- **Video Server, Compact DVR:** Enable the **Remote ViewLog** function.

To use the Remote ViewLog player, it is required to install the Remote ViewLog program from the software DVD to your GV-GIS computer.

Right-click the fixed host and select **Remote ViewLog**. The Remote ViewLog player will appear. Select the desired camera and video event to start playing. For detailed functions of the player, see *Chapter 4 Playing Back Video Files, User's Manual* on Surveillance System Software DVD.

If the player does not appear, click **Configure** on the menu bar, select **System Configuration**, click the **Remote ViewLog** tab, and verify the path of the installed Remote ViewLog program. See *7.4 Remote ViewLog Settings*.

Chapter 5 Advanced Operations

5.1 Creating an E-Map

The E-Map allows you to import a floor plan in BMP, GIF and JPG formats, and use the icons of cameras and I/O devices to edit an electronic map according to your requirements. When the cameras and I/O devices are triggered at the host, the related icons will blink to warn you.

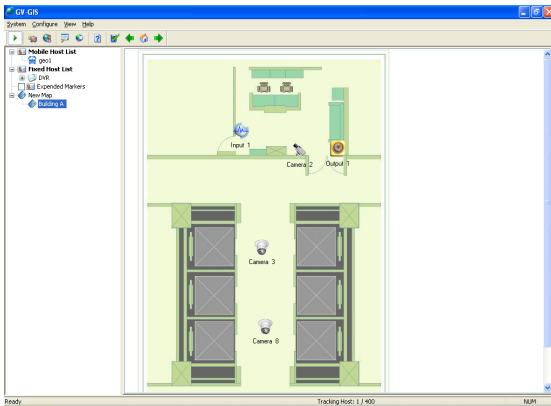


Figure 5-1

1. On the host list, right-click **New Map** and select **Add Map**. A new Map folder is created.
2. Name the map folder, and click it to open.
3. Right-click the created map folder and select **Load Map** to import a graphic file.
4. Drag and drop the icons of cameras and I/O devices from the fixed host onto the map.

5. You can set the direction where you want the camera to point to, and change the camera icon into the PTZ camera icon by right-clicking a camera icon.
6. You can also drag the created E-Map icon from the host list to the correct location on the tracking map.

Note: The icons of cameras and I/O devices are used on either the tracking map or the E-Map.

5.1.1 Configuring E-Map Icon Settings

You can set options for the E-Map icon. Click the **Map Setting** button (No. 11, Figure 1-3) on the toolbar and click the **E-Map Settings** tab. This dialog box appears.

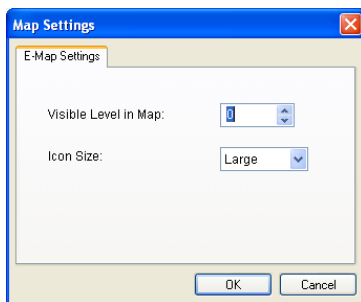


Figure 5-2

- **Visible Level in Map:** Set the minimal zoom level of the E-Map icon on the tracking map. For example, if you set it to 14, you can only see the E-Map icon on the tracking map when zooming in to the level 14 or above. Setting the level to 0 makes the E-Map icon always visible regardless of zoom level.
- **Icon Size:** Set large or small icons on the E-Map.

5.2 Adding a Place

You can add a place marker of business or point of interest to the map.

1. On the host list, right-click **Expended Markers** and select **Add Marker**. This dialog box appears.

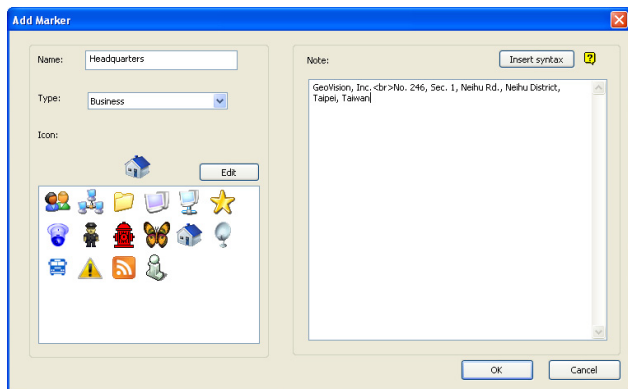


Figure 5-3

2. Name the place marker and select the icon.
3. Optionally, you can select **Type** if available and enter the details in the **Note** field to describe the place.
4. If you want to add a photo to describe the place, click **Insert Syntax** and select **Insert Image**. This dialog box appears. Click **Search** to locate the image path and name the image.

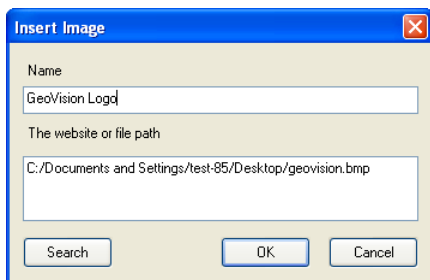


Figure 5-4

5. If you want to add a web link to describe the place, click **Insert Syntax** and select **Hyper Link**. The dialog box similar to Figure 5-35 appears. Name and enter a web address.
6. After above settings, drag the created marker to the correct location on the map.

When you click the marker, you should see the information you added to describe the location.

5.3 Saving a View

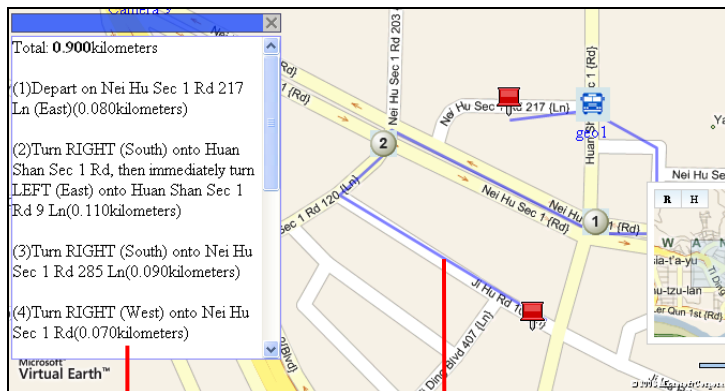
You can save a view of interest by creating a view marker. Every time when you click on the view marker, the map will return to the saved view.

1. Adjust the map to the desired view and zoom level.
2. On the host list, right-click **Expended Markers** and select **Add Map View Region**.
3. Name the view, select one icon, and click **OK**.
4. If you want to change the saved view, adjust the map to the desired view and zoom level, right-click the view marker and select **Update Region**.

5.4 Getting Driving Directions

You can get the step-by-step driving directions. This feature may not be available to your location depended on Maps API.

1. Right-click on the map, and select **From** to set the starting point.
2. Right-click on the map, and select **To** to set the stop where you want to go before reaching to the final destination. You can configure multiple stops.
3. Right-click on the map, and select **Destination** to set the destination. A possible route and step-by-step directions are displayed.



The window provides the estimated distance and step-by-step directions.

The blue line displays your possible route.

Figure 5-5

5.5 Self-Defining Event Colors

The text and background colors for each event on the Event List (Figure 1-4) can be self-defined for convenient checkup.

1. On the main screen, click **Configure** from the menu bar and select **Event List Setting**. This dialog box appears.

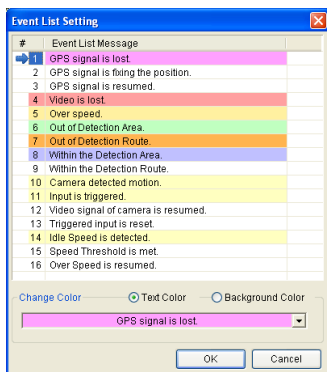


Figure 5-6

2. Select the desired type of event. It is shown in the drop-down list at the bottom of the dialog box.
3. Select **Text Color** or **Background Color**, and click on the drop-down list to edit the color.
4. Click **OK** to save the new color settings. All the events of the selected type in the Event List will change color based on the settings immediately.

5.6 Showing Host Position on an Alarm Event

You can view the previous position of the mobile host when it triggered an alarm event. In the Event List, right-click any **Alarm** event and select **Show Position**. A small window will pop up showing the past position of the mobile host that had triggered the event.

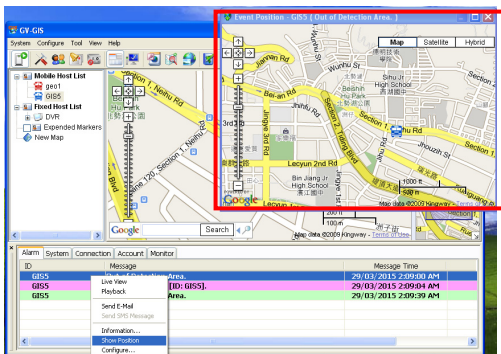


Figure 5-7

5.7 Applying Longitude and Latitude Positions on Fixed Hosts

The fixed host of GV IP devices, without GPS connectivity, can be positioned on the map. The location of the fixed host is based on the longitude and latitude values found in the Web interface of the GV IP device. By dragging the fixed host icon onto the map will automatically lock the host icon to the longitude and latitude values detected.

There are 2 methods to update the longitude and latitude values for a fixed host. Method 1 is to manually enter the longitude and latitude values for the fixed host on its Web interface. Method 2 is to drag the fixed host icon to a desired map location and GV-GIS will automatically translate the position

and fill it in the longitude and latitude fields in the Web interface of the fixed host.

Note: To access the longitude and latitude settings on the Web interfaces of GV IP devices, select **Management** and select **GPS Map Settings**.

Method 1 (When the longitude and latitude values are known):

1. Access the account setting of the fixed host.
2. In the Host Information dialog box (Figure 2-3), select **Apply the Device's GPS positions** and click **OK**. The position of the fixed host is updated based on the longitude and latitude values entered in the GV IP device's Web interface. When you drag the fixed host icon onto the map, the icon will automatically move to its correct position on the map.

Method 2 (When the longitude and latitude values are unknown):

1. Drag a fixed host icon onto the desired location on the map.
2. Right-click the fixed host and select **Update Position to Host**. The current map location for the fixed host is now updated to the longitude and latitude fields in the GV IP device's Web interface.
3. When the longitude and latitude values for the fixed host is found and set with Method 2, GV-GIS operators can follow **Method 1** steps to always lock the fixed host on the same position in the future.

5.8 Monitoring GV-I/O Boxes

You can remotely monitor the I/O status and force any output device to be triggered when needed. The application only supports **GV-I/O Box 8/16 Ports** with Ethernet Module.

To add the I/O Box, follow the steps of *Creating a Fixed Host* earlier in this chapter and select **I/O Box** to be **Host Type**. When the setup is completed, the added I/O Box will be displayed on the Fixed Host List (No. 1, Figure 1-2).

To monitor the I/O status, right-click the I/O host and select **Event Monitor**. The input and output triggers will be detected by GV-GIS.

To remotely force any output, right-click one output icon and select **Force Output**.

Chapter 6 Event Log Browser

The GV-GIS records the events in five types of logs: Alarm, System, Connection, Account and Monitor. With the event logs in the Event Log Browser, you can obtain information about tracking alarms, system activities, host connectivity, account changes and monitored events. On the toolbar, click the **Event Log Browser** button (No. 8, Figure 1-3) to start.

Tip: Right-clicking an Alarm event, you can access the functions of Remote Playback, Instant Playback and Show Position.



Figure 6-1

The buttons on the Event Log Browser:

No.	Name	Description
1	Open	Open an event log. See <i>Opening the Event Log</i> later.
2	Reload	Refresh the event log manually
3	Filter	Define the search criteria. See <i>Filtering the Event Log</i> later.
4	Refresh the Filter Result	Refresh the filter results.

5	Backup	Export the current event list. See <i>Backing Up the Event Log</i> later.
6	Page Setup	Create a header and footer for the printout of the event list. See <i>Printing the Event Log</i> later.
7	Print	Print the current event list.
8	Exit	Exit the browser.
9	Log Tab	Click the log tabs of Alarm, System, Connection, Account and Monitor to get the related log events.

6.1 Opening the Event Log

To open the log data, follow these steps:

1. Click the **Open** button (No. 1, Figure 6-1). This dialog box appears.

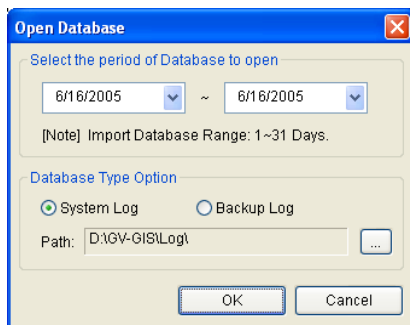


Figure 6-2

2. Specify a period of time and select the type of database. If you want to open the logs created by the system, select **System Log**; if you want to open the logs you have backed up in a local drive or CD/DVD, select **Backup Log**. Then assign the log path.
3. Click **OK**. The events matching the search criteria are displayed in the Event Log Browser.

For details on backing up logs, see *Backup Settings* later in this chapter.

Note: By default, the displaying period of time is one day, the type of database is **System Log** and the log path is at: **\GV-GIS\Log**. The default displaying period of time and log path can be modified by using the Event Log Settings (Figure 7-3).

6.2 Filtering the Event Log

You can filter log events on the defined criteria.

1. Click the **Filter** button (No. 3, Figure 6-1). This dialog box appears.

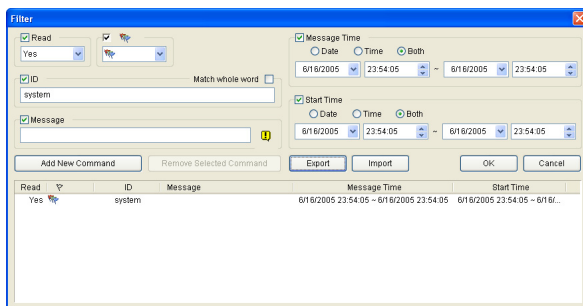


Figure 6-3

2. Specify the filter options that you want:
 - **Read:** Search for the events you have opened on the Event List that is at the bottom of the GV-GIS main screen.
 - **Flag:** Search for the flagged events.
 - **ID:** Search for the events from a specific host or related to system activities.
 - **Message:** Search for the events by keywords.
 - **Message Time:** Search for the events by the arriving time or date to the GV-GIS.
 - **Start Time:** Search by the starting time of the events occurred at the host.
3. If you want to save your filter settings to another location, click **Export**. If you want to apply the pre-defined filter settings, click **Import**.
4. Click **OK**. The events matching the filter settings are displayed in the Event Log Browser.

6.3 Backing up the Event Log

You can back up logs to a local drive, or export them to CD and DVD.

1. Click the **Backup** button (No.5, Figure 6-1). This dialog box appears.

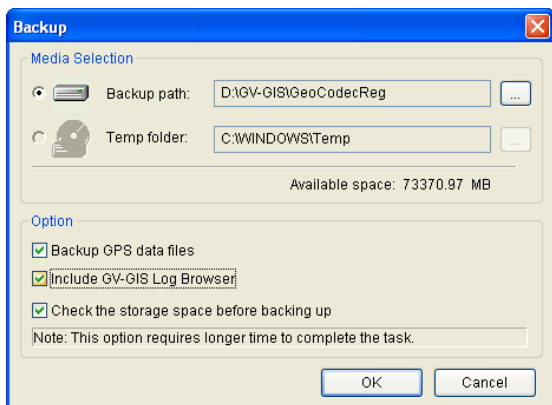


Figure 6-4

2. To back up logs to a local drive, select **Backup Path**, click the [...] button and assign a location where you want to save the files.
3. To export logs to CD and DVD, select **Temp folder**, click the [...] button and assign a location for temporary storage of backup data.
4. For backup contents, you can select **Backup GPS data files** to back up GPS data and event logs; select **Include GV-GIS Log Browser** to include the Event Log Browser program with the backup data.
5. Click **OK**.
6. If you select **Temp folder**, this dialog box appears for further setup.

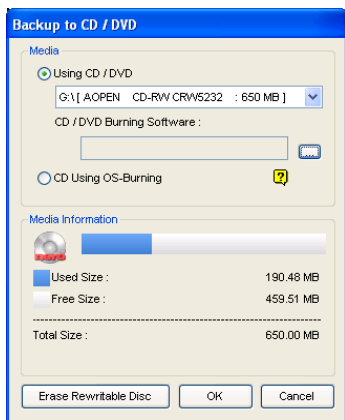


Figure 6-5

- **Using CD/DVD:** Click to back up files to the CD or DVD using the third-party software. Click the [...] button to assign the desired burning software (.exe file).
- **CD Using OS-Burning:** This option is only available when you use Windows XP, Server 2003 or Vista. It burns files to the CD or DVD using the inbuilt software of the operating system.

6.4 Printing the Event Log

You can print out the filtered log events, and define the footer and header for the printout.

1. To print the log events, click the desired log tab (No. 9, Figure 6-1) to display its log events.
2. Click the **Page Setup** Button (No. 6, Figure 6-1). This dialog box appears.

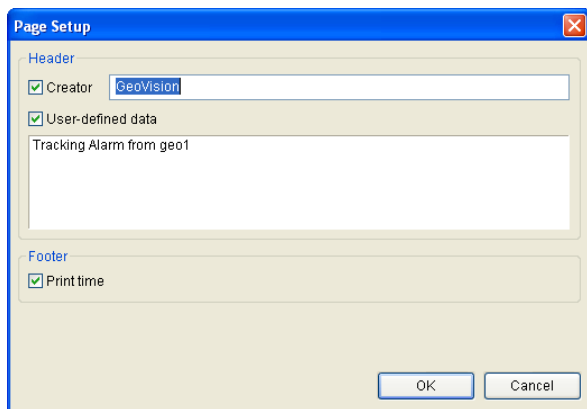


Figure 6-6

3. Select the options and type the information you want to for the header and footer and click **OK**.
4. Click the **Print** button (No. 7, Figure 6-1) to start printing.

Chapter 7 System Configurations

To configure the GV-GIS system, click the **System Configuration** button (No. 2, Figure 1-3) on the toolbar.

7.1 Layout Settings

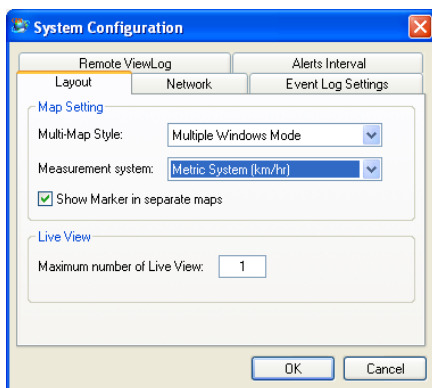


Figure 7-1

- **Multi-Map Style:** Select **Multiple Window Mode** to display tracked hosts in different windows; select **Single Window Mode** to display all tracked hosts in the same window. See 3.5 *Tracking Multiple Hosts*.
- **Measurement system:** Select imperial or metric measurements.
- **Show Marker in separate maps:** When the option is selected, the created Markers will also be shown in multiple tracking views (Figure 3-6).
- **Maximum number of Live View:** Specify the maximum number of the Live View window displayed on the screen between 1 and 16. See 3.3 *Viewing Live Video*.

7.2 Network Settings

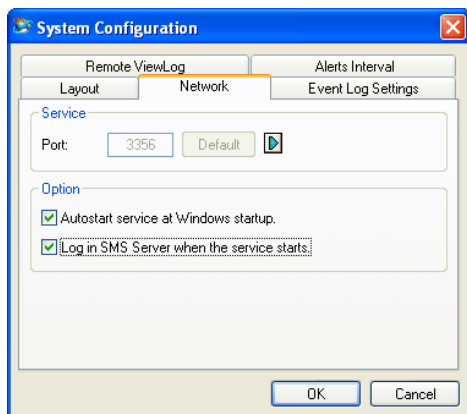


Figure 7-2

- **Port:** The default communication port is 3356.
- **Auto start service at Windows startup:** Automatically starts the GV-GIS services at Windows startup.
- **Log in SMS Server when service starts:** Automatically starts the SMS Server when GV-GIS services are started.

7.3 Event Log Settings

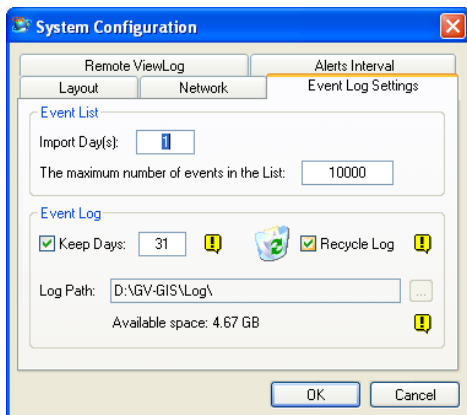


Figure 7-3

[Event List]

- **Import Day(s):** Specify the number of days for which data logs will be loaded when the Event List (No. 8, Figure 1-2) and the Event Log Browser (Figure 6-1) are opened. The number is between 1 and 7 days.
- **The maximum number of events in the List:** Specify the maximum number of events displayed in the Event List. The number is between 500 and 500000.

[Event Log]

- **Keep Days:** Select this option and specify the number of days to keep logs. Cleaning this option can keep logs for an unlimited period of time unless the disk space is full or the Recycle function is activated.
- **Recycle Log:** Selecting this option will cause the oldest files to be deleted when the storage space is lower than 500 MB.
- **Log Path:** Indicate the saved location of logs.

7.4 Remote ViewLog Settings

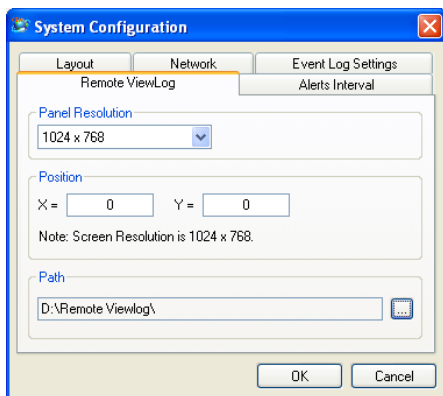


Figure 7-4

[Panel Resolution] Select the panel resolution of the Remote ViewLog player.

[Position] Set the position of the Remote ViewLog player on screen. The position settings support negative coordinates and correspond to the XY coordinates in Windows Display Properties.

[Path] Specify the saved location of the Remote ViewLog program.

7.5 Alert Intervals

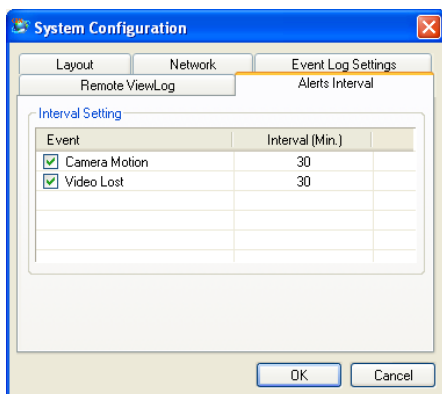


Figure 7-5

[Interval Setting] Specify the interval between the incoming messages upon Camera Motion or Video Lost. Select the event type and click on the interval column to change the time.

Chapter 8 Notification Settings

When alert conditions occur, GV-GIS can automatically activate the assigned computer and output alarm to warn GV-GIS operators while a pre-defined SMS and e-mail message are being sent out to warn related persons.

To access the function, click the **Notification** button (No. 4, Figure 1-3) on the toolbar.

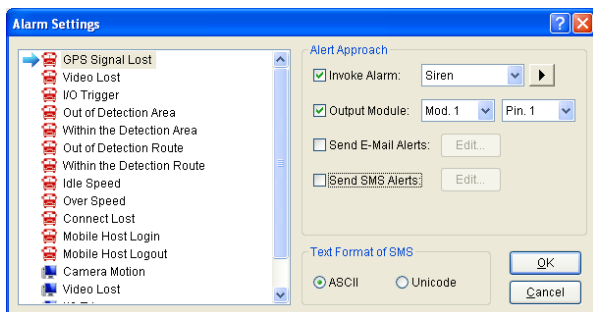


Figure 8-1

[List box] Select an alert condition in the left list box to be configured.

[Alert Approach]

- **Invoke Alarm:** Select a computer alarm from the drop-down list. Or, select **User Define** from the list to import one desired .wav sound. Click the **Arrow** button beside to test the assigned alarm.
- **Output Module:** Select an installed output model and pin number to warn the operator.
- **Send E-Mail Alerts:** Enable this option to send e-mails to warn related persons. Click the **Edit** button to edit a message. For Mailbox settings, see *Chapter 11 E-Mail Alerts*.
- **Send SMS Alerts:** Enable this option to send SMS messages to warn related persons. Click the **Edit** button to edit a message. For SMS Server settings, see *Chapter 10 SMS Alerts*.

[Text Format of SMS] ASCII for English text, limited to 160 characters.
Unicode for other languages, limited to 70 characters.

Note:

1. For SMS and e-mail alerts, it is required to configure the Mailbox and SMS Server first. It is also required to enter the e-mail address and mobile number to the individual host's account (see [2.2 Creating Host Accounts](#)).
 2. For output alarms, a GV-I/O Box should have been added to GV-GIS. See [Chapter 9 Output Alerts](#).
-

Chapter 9 Output Alerts

When alert condition occurs, you can activate the output devices installed at the GV-GIS site and at the remote host. Currently the application only supports GV-I/O modules.

9.1 Adding Output Devices

To install output devices on the GV-GIS, follow the steps below.

1. Click **Configure** from the menu bar of the main screen and select **I/O Device Setting**. This dialog box appears.

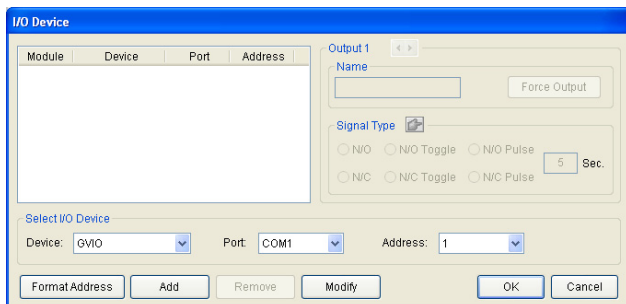


Figure 9-1

2. Select the I/O module from the Device drop-down list.
3. Select the COM port that the I/O module is connected to.
4. For the user of the GV-I/O and GV-Relay module, click the **Format Address** button to assign an address to the device. In the Format Address dialog box, start your first device with **New Address** set to 1 and click the **Write** button to write the address into the device.
5. For the user of the GV-I/O Box 4, 8 or 16 ports, the device address should be set on the device itself first. Select the correct address number from the Address drop-down list.

6. Click the **Add** button. You should see the device listed in the display window.
7. Repeat above steps to add more devices, and remember to assign a different address for each device.

Other options on the I/O Device dialog box:

[Name] Name the output device.

[Force Output] Click this button to force the output to be triggered.

[Signal Type] Select output signal to be normally closed (NC) or normal open (NO). For Toggle status, the output trigger will keep going on until a new trigger happens. For Pulse status, the output is triggered for the amount of time specified in the Sec field (seconds).

9.1 Forcing Outputs of GV-GIS

To automatically force any output to be triggered when alert conditions occur, see *Chapter 8 Notification Settings*.

To manually force any output to be triggered, click the **Local I/O Device Control** button (No. 5, Figure 1-3), select a desired module and then click **Finger** button to trigger it.

9.2 Forcing Outputs of a Host

See 4.2.3 *Output Icon*.

Chapter 10 SMS Alerts

You can send SMS messages to warn related persons when alert conditions occur.

10.1 Setting SMS Server

Before sending SMS messages, you need to define SMS Server correctly.

1. On the main screen, click **Configure** from the menu bar and select **SMS Setting**. This dialog box appears.

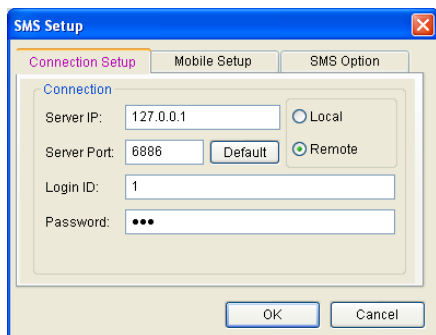


Figure 10-1

2. Type the IP address, communication port, Login ID and Password of the SMS Server.
3. If the SMS Server is installed on the same computer with the GV-GIS, select **Local**. If not, select **Remote**.
4. To configure up to three mobile numbers of operators to get notified when the GV-GIS loses connection to SMS Server, click the **Mobile Setup** tab. This dialog box appears.

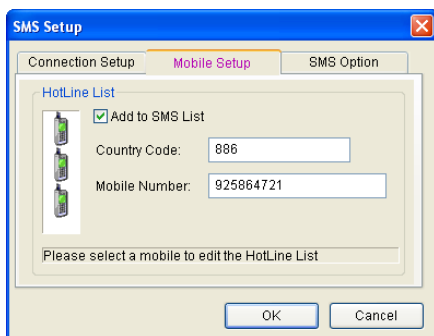


Figure 10-2

5. Select one mobile icon, select **Add to SMS List**, and type country code and mobile number.
6. To set time intervals between each SMS message when alert occurs, click the **SMS Option** tab. This dialog box appears.

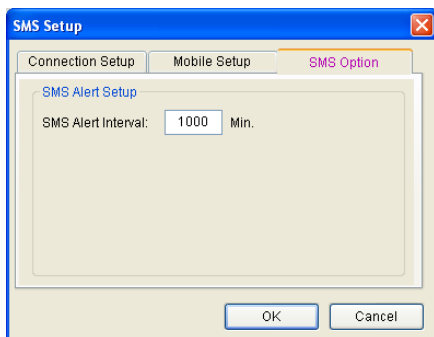


Figure 10-3

5. In the SMS Alert Setup field, set the interval between 0 and 1440 minutes.

For details on building a SMS Server, see Chapter 10, *User's Manual* on the Surveillance System Software DVD.

10.2 Connecting to SMS Server

On the main screen, select **Configure** from the menu bar and select **Connect to SMS Server** for connection to SMS Server.

10.3 Sending SMS

Once the connection of SMS Server and GV-GIS is established, there are several ways to send SMS messages.

1. To automatically send SMS messages when alert conditions occur, see *Chapter 8 Notification Settings*.
2. To manually send SMS messages to warn any person anytime, right-click one host on the Host List or on the map, select **Send SMS Message**, and enter the desired mobile number and contents for alerts.

10.4 Inserting ID and Camera Name to Alert Messages

The host's ID and camera name can be automatically inserted to your SMS message when it is sent out.

1. Click the **Notification** button (No. 4, Figure 1-3) on the toolbar. The Alarm Settings dialog box appears.
2. Select an alert condition in the left list box, select **Send SMS Alerts**. This dialog box appears.



Figure 10-4

3. Type the message text and click **Macros**. This dialog box appears.

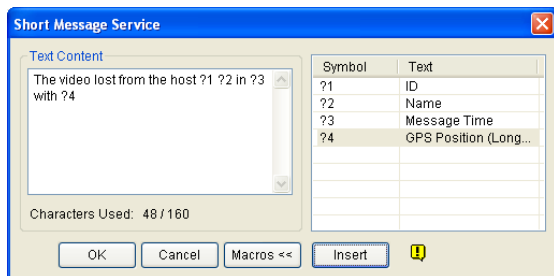


Figure 10-5

4. Place the pointer in the text where you want to insert the ID, Name, Message Time or GPS Position, select the corresponding symbol from the right column, and click **Insert**.

The symbol will be replaced with the real information when the message is displayed to a reader.

Chapter 11 E-Mail Alerts

You can send e-mails to related persons when alert conditions occur.

11.1 Setting Mailbox

Before you can send the e-mail to an e-mail account, you need to define your mailbox correctly.

11.1.1 Setting up the mailbox

1. On the main screen, click **Configure** from the menu bar and select **E-Mail Setting**. This dialog box appears.

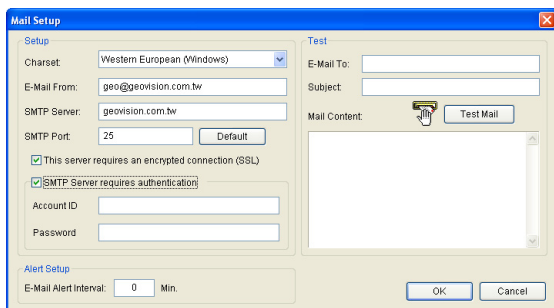


Figure 11-1

2. In the Charset field, select the set of characters and symbols that the e-mail uses.
3. In the E-Mail From field, type your e-mail address.
4. In the SMTP Server field, type the outgoing server address.
5. If your e-mail server requires an SSL (Secure Sockets Layer) authentication for connection, select **This server requires an encrypted connection (SSL)**.

6. If your e-mail service provider requires authentication for sending e-mails, select **SMTP Server requires authentication**, and type the account ID and password of your SMTP.
7. If you want to set time intervals between each e-mail message when alert occurs, in the Alert Setup field, set the interval between 0 and 1440 minutes.
8. Click **OK**.

11.1.2 Sending a Test E-Mail

After setting up your mailbox, you can use the Test section and send a message to your own e-mail account for testing.

1. Enter your own e-mail address in the E-Mail To field.
2. Enter a subject for the e-mail.
3. Type the desired message in the Mail Content field.
4. Click the **Test Mail** button.

11.2 Sending E-Mail

There are several ways to send e-mails.

1. To automatically send e-mails when alert conditions occur, see *Chapter 8 Notification Settings*.
2. To manually send e-mails to warn any person anytime, right-click any host on the Host List or on the map, select **Send E-Mail**, and enter the desired mail address and contents for alerts.

Chapter 12 Failover Support

You can configure up to two backup servers in case of the primary GV-GIS server failure. Whenever the primary fails, the backup server takes over the connection from the primary server, providing uninterrupted GIS services.

1. It is required to pre-configure the backup server with the same account settings as the primary station first.
2. On the main screen, select **System** from the menu bar, and select **Automatic Failover Support**. This dialog box appears.

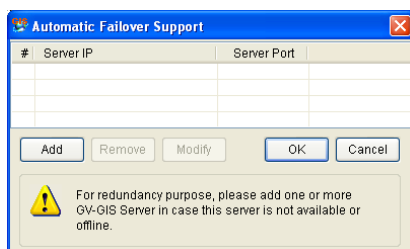


Figure 12-1

3. Click the **Add** button to add one server. This dialog box appears.

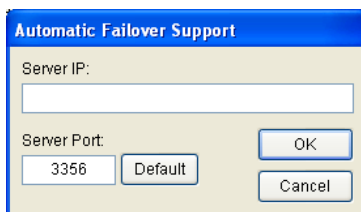


Figure 12-2

4. Type the IP Address of the backup server. Keep the default port setting or modify it if necessary.

5. Click **OK**. When the primary GV-GIS server fails, all connections from subscribers will be diverted to the backup server.

Note: Once the primary station is ready to resume the services, it is required to close the backup station so the connection from subscribers can move back to the primary.

Appendix

A. Dongle Options

You have these dongle options for GV-GIS applications:

- GIS
- GIS + AVP
- GIS + VSM
- GIS + VSM + AVP
- NVR + LPR + GIS

B. Upgrading the Black Dongle

The Black Dongle can be upgraded to include more functions or enhance the system. You need to collect the data from your dongle and send it back to GeoVision for an upgrade. The upgrade is a charged service. To upgrade your dongle, follow these steps:

1. Each dongle has its own serial number. Find it on the side of the dongle. Later this serial number will be used in naming the files for upgrading.



Figure 1

2. Insert the dongle to the computer.
3. In the GV folder, double-click **GVUsbKeyUpClient.exe**. This dialog box appears.

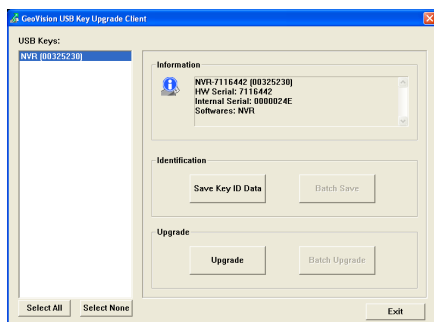


Figure 2

4. To retrieve the data from the dongle, click **Select All**. The information of the dongle is displayed in the information field. Note the displayed number of “HW Serial” should be the same as that on the dongle.
5. To save the data to your local computer, click **Save Key ID Data**. If you have more than one dongle to upgrade, click **Batch Save**. Different dongle data will be saved as separate files. The file will be named after the serial number on the dongle and saved as *.out. For example, if a dongle serial number is 7116442, the file is named “NVR-7116442.out”.
6. Send this data file to GeoVision at sales@geovision.com.tw. The GeoVision will examine the data file and send an *.in file back to you. The file name also includes the serial number of that dongle. In this example, the data file you will receive is named “NVR-7116442.in”.
7. After you receive the updated file, insert the correct dongle matching the .in file you receive, and then run **GVUsbKeyUpClient.exe**.
8. Click **Select All** to read the dongle, click **Upgrade** and then open the updated file to upgrade the dongle. You can also select more than one dongle in the list and click **Batch Upgrade** to upgrade them at the same time. Make sure these dongles match the updated files you receive.

C. Shortcut Keys

Shortcut Keys	Description
F2	Open the Account window for account settings.
F3	Open the Find dialog box for account search.
F4	Go to the tracking map.
F5	Open or close the Event List.
F6	Open or close the Monitor List.
F7	Open the Range Query dialog box to search for places and devices.
F8	Open the E-Map Setting dialog box to set the minimal zoom level of the E-Map icon on the tracking map.
F9	Open the System Configure dialog box.
F10	Open the Log Browser.

D. Specifications

Feature	Amount	Device
Mobile Host	Up to 500 hosts (depending on the Dongle in use)	GV-Video Server GV-Compact DVR
Fixed Host	Unlimited	GV-DVR/NVR GV-Video Server GV-Compact DVR GV-IP Cam GV-Speed Dome GV-Smart Box GV-I/O Box 8/16 Ports (Ethernet Module) GV-LPR GV-DSP LPR 3rd-party IP cameras
I/O Module	9 units	GV-I/O GV-I/O Box (4/8/16 Ports)
Live View	16 views	Mobile Hosts + Fixed Hosts
Map View	16 views	Mobile Hosts
Marker	Unlimited	
ViewLog	1	Remote ViewLog program required to be installed
Instant Playback	1	