

# WiFi-Doc Client for Android



## User's Manual

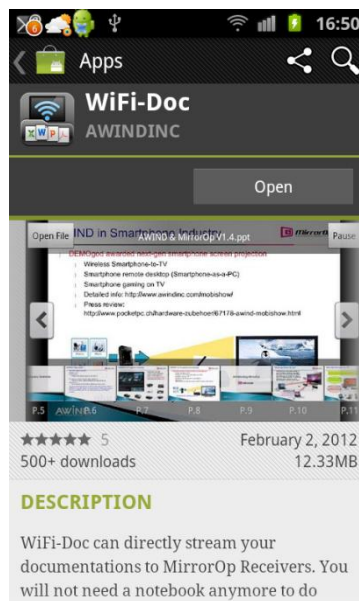
Version: 2.5  
Date: Jun 23, 2013

# 1 WiFi-Doc Utility for Android

## 1.1 Download from Google Play




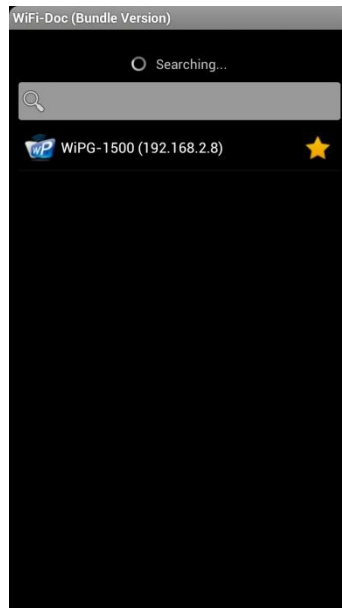
- A. Connect your phone or tablet to internet.
- B. Open the Google Play and download the WiFi-Doc application. (Figure 1)
- C. Follow the instructions to finish the installation.



(Figure 1)

## 1.2 Using WiFi-Doc with Android phone/tablet

- A. Enable the WiFi and connect to the Access Point where the WiFi-Doc compatible device is connected.
- B. Select the "WiFi-Doc" icon  to launch the app.
- C. The WiFi-Doc app will start to search for receiver devices automatically. You can use the filter to find receiver with specified name, or use the Star to mark favorite receivers. (Figure 2)



(Figure 2)

**Note.** You can press Menu button to show the following options for WiFi-Doc (Figure 3)

**Tap to enter IP address:** Enter the target device IP address manually

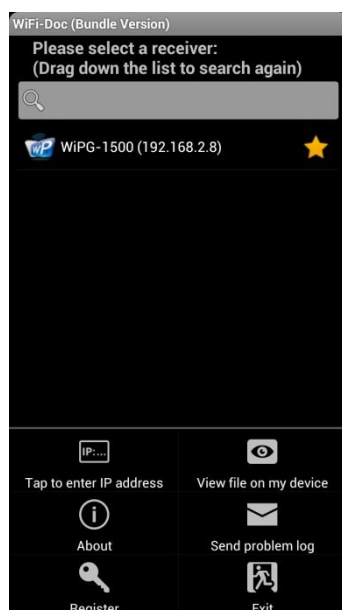
**View file on my device:** View documents or photos on your device locally.

**About:** Show WiFi-Doc version and information

**Send problem log:** If any problem occurs, use this item to send error log to engineers.

**Register:** Enter activation key to register.

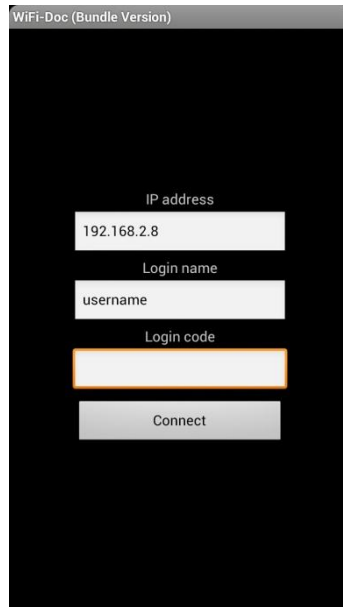
**Exit:** Exit application.



(Figure 3)

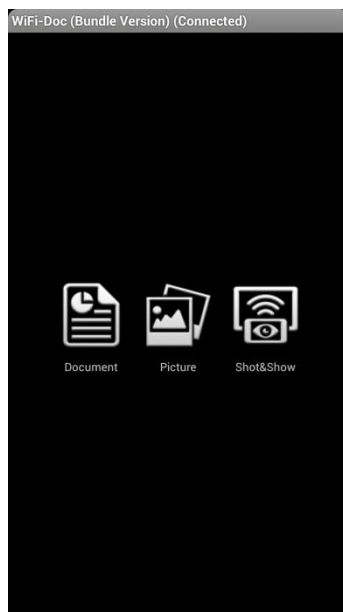
D. Enter the login code and press Connect. Press Connect directly if

the connected device disabled the login code protection. (Figure 4)



(Figure 4)

E. Select from Document/Photo/Shot&Show functions. (Figure 5)

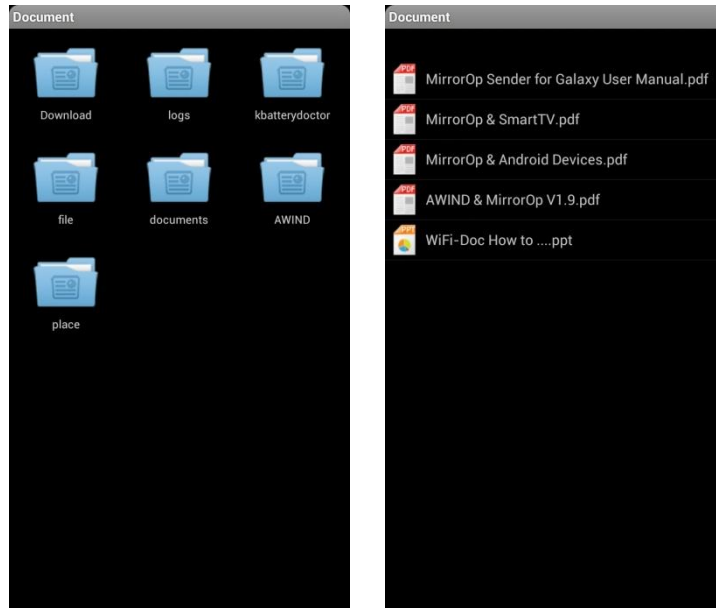


(Figure 5)

## 1.2.1 Document

You can use WiFi-Doc to project Documents (Word, Excel, PDF, text and PowerPoint files ) stored on your Android device to big screen. The document will be prepared for playback on big screens rather than for the tiny screens of your phone/tablet.

Open and select a document file. (Figure 6)



(Figure 6)

Selected file will be opened and projected to the connected receiver.

(Figure 7)



(Figure 7)

If the projection is taken over by other sender, a big Play button will be shown on the screen of WiFi-Doc. Click on the Play button to resume projection. (Figure 8)



(Figure 8)

## Gesture Controls

### Next/Previous page

As Figure 9 shows, you can use your finger to slide the screen go to the previous/next page directly.



(Figure 9)

### Go to page

As figure 10 shows, click on any page thumbnail to jump to that page.





(Figure 10)



## Zoom in/Zoom out

Use your fingers to pinch on your phone to zoom in/out the projection screen during document playback.



(Figure 11)

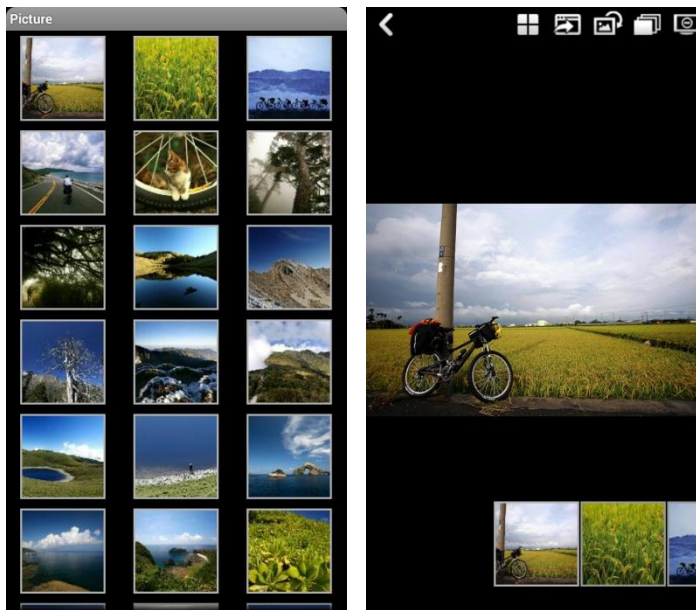
Button	Description
	Select full-screen or quadrant projection
	Enable/disable WebSlides function (need receiver support)

	<p>Start/stop projection</p>
	<p>Back to documents select screen.</p>

## 1.2.2 Photo

You can use WiFi-Doc to project Photo stored on your phone/tablet storage to screen.

Open and select the photo file. Selected photo will be projected to the receiver screen. (Figure 12)



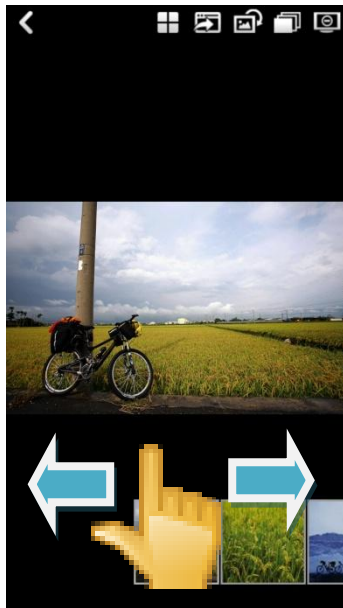
(Figure 12)

## Gesture Controls

### Next/Previous photo

As Figure 13 shows, you can use your finger to slide the screen go to the previous/next photo.





(Figure 13)

### **Go to photo**

As figure 14 shows, click on any photo thumbnail to jump to that photo.









(Figure 14)

### **Zoom in/Zoom out**

Use your fingers to pinch on your phone to zoom in/out the projection screen during photo playback.



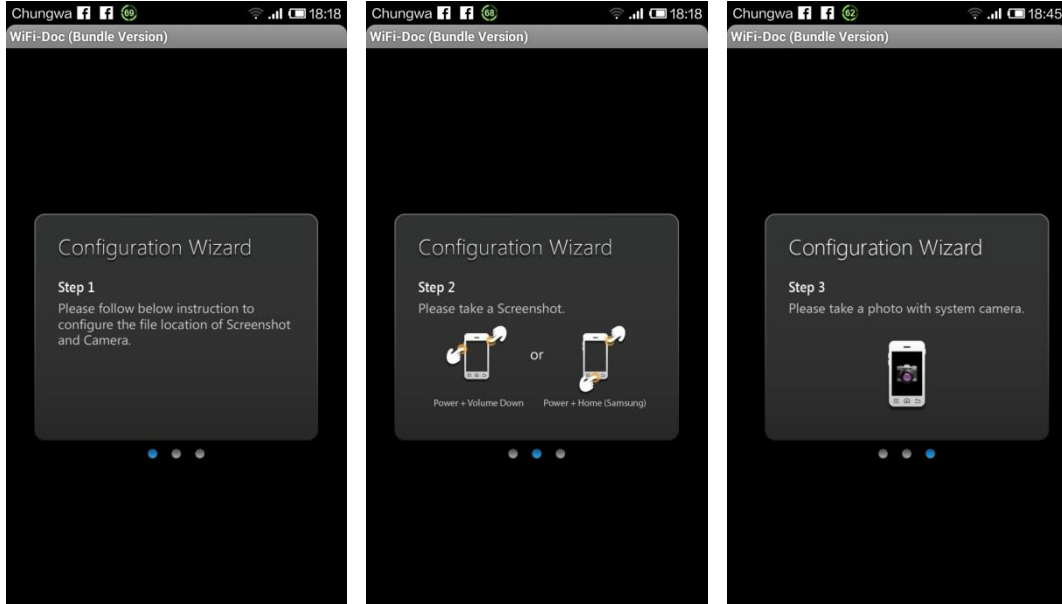
Figure 15

Button	Description
	Select full-screen or quadrant projection
	Enable/disable WebSlides function (need receiver support)
	Rotate photo clockwise
	Enable/Disable slideshow
	Start/stop projection
	Back to documents select screen.

### 1.2.3 Shot&Show

Show&Show is a useful function when you need to show the screen of your phone/tablet rather than stored documents or photos.

Before using Show&Show, you need to configure the folders of screenshots and camera of your phone to be used in WiFi-Doc. When you first enter the Show&Show function, the setup wizard will guide you to set it up.



You can skip by pressing the Back button of your phone/tablet. You can also setup the folder path by pressing the Menu button and enter the settings page.

When the setup is complete, the Show&Show standby screen will be projected to the receiver.



You can then press the Home button to go to the Home screen. To show selected screen, take a screenshot in the page you want to show. You can also use the camera to take photo of any object and show it on the receiver screen.