



PDR.net Series

USER MANUAL

ENGLISH VERSION



CONTENTS

- [Frequently Asked Questions \(FAQ LIST\)](#)
- 1. [SYSTEM REQUIREMENT](#)
- 2. [INSTALLATION PROCEDURE](#)
- 3. [PDR.net MAIN SCREEN INSTRUCTION](#)
 - [3.1 Main tool bar operation instruction](#)
 - [3.2 PTZ Control Instruction](#)
- 4. [Configuration Setting](#)
 - [4.1 Normal Setting](#)
 - [4.2 Recording Setting](#)
 - [4.2.1 Normal Record Mode Setting](#)
 - [4.2.2 Detect Record Mode Setting](#)
 - [4.2.3 Sensor Record Mode Setting](#)
 - [4.3 Detect Setting](#)
 - [4.4 Schedule Setting](#)
 - [4.5 User Setting](#)
 - [4.6 Network Setting](#)
 - [4.7 About](#)
- 5. [Playback Setting](#)
 - [5.1 Playback Operation Instruction](#)
 - [5.2 File Backup](#)
- 6. [Event List](#)
- 7. [PDR Player](#)
- 8. [Client Program](#)
 - [8.1 Client program installation instruction](#)
 - [8.2 Client program operation](#)
 - [8.3 Remote monitoring image play setting](#)
- 9. [Web Page Broadcasting Setup Instruction](#)
 - [9.1 Xitmai web server installation](#)
 - [9.2 PDR WEB CAMERA Setup](#)
 - [9.3 PDR Remote Access Instruction](#)



F.A.Q.

Frequently Asked Questions

1.How is the minimum hardware requirement?

The Minimum hardware requirement for PDR with 8-port video capture cards is Celeron 1.7MHz CPU with 256M RAM. However, the minimum hardware requirement for PDR with 12-port is Pentium 4 1.7GMHz CPU with 256M RAM. The Intel chipset motherboards are strongly recommended. In addition, a 300W power supply, heat fan, and AGP VGA with 32MB RAM are needed. Unless the motherboard supports APIC, please never plug the video capture card into the fifth PCI slot counted from AGP slot and use PCI steering function within BIOS (Please refer to the manual of motherboard). This might cause some unexpected problems such as system crash.

2.How is the compatibility of PDR with any OS?

PDR can be installed in Windows 98, Windows ME, Windows 2000 and Windows XP. Please upgrade Windows by using Windows Update before install PDR.

3.How to organize the partition before install PDR?

Please turn off the unnecessary IRQ in BIOS configuration setting such as COM ports, USB, or Sound first. The primary partition in Windows 98 and ME is 2047MB(approach to 2 GB), Windows 2000 and XP is 4096MB(approach to 4 GB). Once the installation done, please shut down the Power Option in Control Panel, and set the cache mode of CD-ROM as "Never Read before running". In addition, please install the latest drivers for the VGA card, chipset of the motherboard, and Microsoft Direct X (For the salability of your system, please install the authorized drivers downloaded from the official websites or supports.) Finally, please adjust the resolution to 800*600 16bits (SDVR is 1024*768 16bits) and the refresh rate to 60 Hz or default. Please contact with the technical supports of your organization when you have any problem of installation.

4.Why can't PDR work with the camera I installed?

This problem probably is made by incorrect driver installation. Please uninstall the current driver and re-install the correct driver for the model you have. If the driver is correct, please switch the capture card to another PCI slot and remove the unnecessary applications. The latest version of PDR is available at www.sentry21.com.tw.

5.I always get flop over on the screen of PDR

Please make sure if there is any damage or burn-in of cameras, cables, or sockets of system. Otherwise, please update the motherboard, VGA card, Direct X, or PDR.

6.Why can't I convert the file I get from playback?

As long as you pause the action when you are using playback function, you can convert the file to pictures, AVI format, backup files, or print it by right click the mouse. If your OS is Windows XP Professional with SP1 or Windows XP Home Edition, please download Indeo Video 5 plug-in from Microsoft.

7.Why can't PDR send an e-mail or alert me ?

The detect mode must be set in order to send e-mail or alert the user.

8.Why can't I use the remote monitoring program?

Please make sure if your Internet connection works and gets a value IP. IF you use the remote client program, please check if you connect the Internet via routers, firewall, or proxy servers and setup the TCP port 2000 of these equipments for the client program (The default port is 2000, please refer to configuration of remote monitoring). In addition, PC Anywhere or other remote controlling programs might have conflicts with PDR, please remove these remote controlling programs while the conflicts occur.



9. Why does XITAMI always show the homepage of copyright declaration?

There is a "WEB" folder within installation CD, please run "SETUP" in the subdirectory named "WEBSERVER". After it, please run "SETUP" in another subdirectory named "WEBCAMERA".

10. How is the image quality of remote detect system?

The quality of image of remote client program can reach 2~5 frames per second via a broadband Internet connection (Depends on the construction of Internet), but the quality of image only can reach 1~3 frames per second by using web browser.

11. Why can't it reboot automatically after I set reboot everyday?

Please ensure if there is any 16-bit program or DOS program running on background or change APACHE to XITAMI. If Windows XP pauses on "Saving your setting", Please upgrade and install Service Pack 1 for your windows XP, or change your OS to another one.

12. Why does my PDR server always crash down?

Please check if the symptom of system crash down appears regularly or not. The crash down might occur because of the instability of software or hardware when this symptom appears randomly. As long as this situation occurs, please check the hardware or re-install the OS. However, if the system crash down regularly, the system might be over heat and you should clear the dust within your PC or setup a heat fan on any component which can heat so much such as CPUs, hard disks, VGA cards, video capture cards.

13. What is the sequence of PDR installation?

After install the OS, shut down the PC and install the video capture card. When the hardware installation wizard shows up after boot, please insert the PDR installation CD to CD-ROM and select correct path you want to install in order to install the driver. Finally, click the "SETUP" in the folder and complete the entire install procedure. If you need the remote motion function, please install Web program last.

14. How can I remove PDR completely?

Run uninstall in PDR or use "Add or Remove Software" in Control Panel to remove PDR. In addition, PDR can be uninstalled by running "SETUP" of PDR.

15. What else of software do I need to install before install PDR?

Direct X 8.1 or above is only one software we strongly recommend to install before you install PDR. This can guarantee the image quality of VGA card installed in your system and improve the performance.

16.The recommended hardware equipments table and OS

OS : Windows 98SE , Windows 2000 , Windows XP (Windows 2000 is highly recommended).

MODEL	PDR_8500_16PORT T	PDR_4500_16PORT T	PDR_9016_16PORT	PDR_9008_16PORT
MAX_DISPLAY_FPS	80 FPS	160FPS	160FPS	320FPS
MAX_RECORDS_FPS	64 FPS	128FPS	128FPS	320FPS
CPU USE TYPE	P4-1.8GHz	P4-2.0GHz	P4-2.0GHz	P4-2.5GHz
RAM	256MBDDR266MHz	512MBDDR333MHz	512MBDDR333MHz	512MBDDR333MHz
MAIN BOARD	INTEL-845D,PE,GE / SIS 648,655			
FSB	533/667MHZ			
BUS MASTER	ATA-100/33 or SERIAL ATA-150			
AGP CHIP	ATI-RADEON 9000(BEST) NVIDIA GE-FORCE 4 DDR RAM			
HARD DISK	UDMA 5 ATA-100/133 7200rpm or SERIAL-ATA HARD DISK			

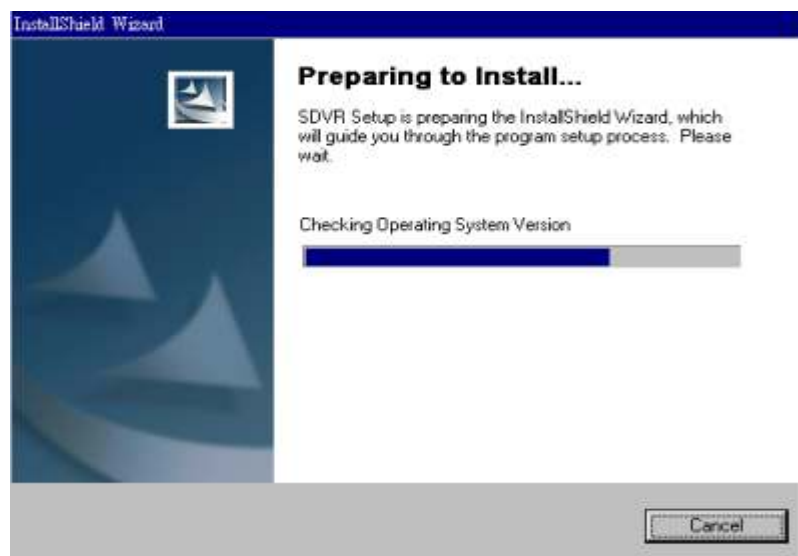
MODEL	PDR_8500_8PORT	PDR_4500_8PORT		PDR_9008_8PORT
MAX_DISPLAY_FPS	40 FPS	80FPS		160FPS
MAX_RECORDS_FPS	32 FPS	64FPS		160FPS
CPU USE TYPE	P4/P4C-1.5GHz	P4/P4C-1.5GHz		P4-1.8GHz
RAM	256MBDDR OR SD	256MBDDR		256MBDDR333MHz
MAIN BOARD	INTEL-845 / SIS 648,655			
FSB	266/533MHZ			
BUS MASTER	ATA-100/33			
AGP CHIP	ATI-RADEON 9000(BEST) NVIDIA GE-FORCE 4 DDR RAM			
HARD DISK	UDMA 5 ATA-100/133 7200rpm			

1. SYSTEM REQUIREMENT

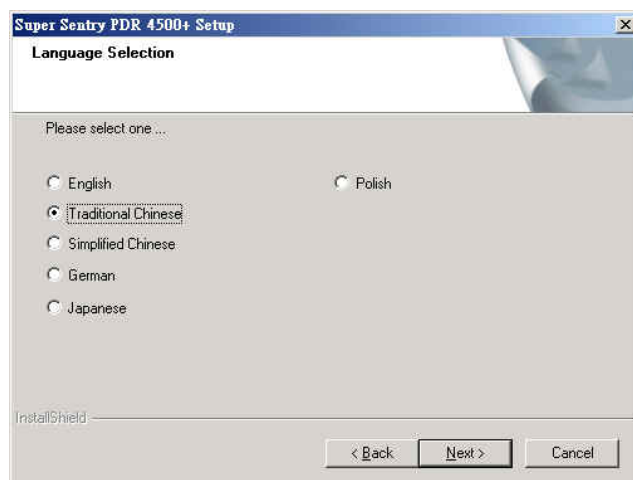
- CPU: Pentium 4 1.5G minimum and Pentium 4 2.0GB for 16-ch system
- RAM: 256MB DDR minimum
- VGA: AGP interface with 64MB RAM (Suggestion : ATi Randon series) (Please update the latest VGA driver according to your Windows OS from the manufactures' websites)
- MB: INTEL 845PE (Suggestion : INTEL CHIPSET)
- OS: Win98se, WinXP, Win2000 and Win2000 will be the best choice for this system. (Please use the Windows Update in order to improve the compatibility and stability of your system.)
- Software: DirectX 8.1 or higher

2. INSTALLATION PROCEDURE

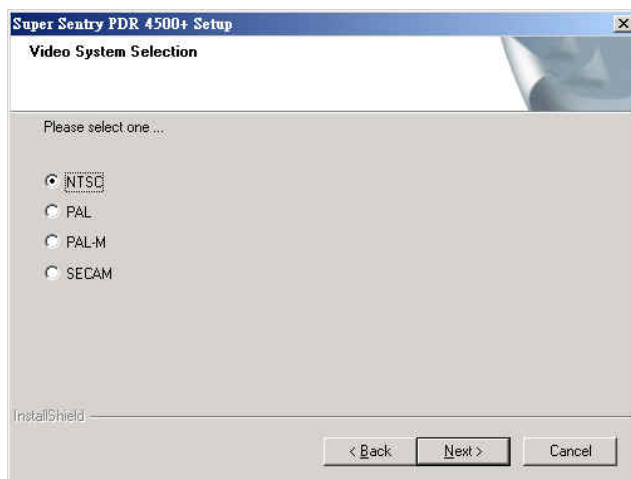
- 2.1 Please insert needed PDR capture cards into PCI slot
- 2.2 System will request capture driver while power on, please indicate the path to PDRXXXX folder in INSTALLATION CD and system will find "PCI WDM VIDEO CAPTURE 1". (Driver will continue install two times or more when you insert two card or more; that is under correct procedure.)
- 2.3 Please check if the "PDRXXXX WDM VIDEO CAPTURE " in "DEVICE MANAGER" has been installed as the capture card number you inserted.(each card will has one "Video capture 1" & one "Audio capture 1". If you insert two cards, that will show out two sets and so on.)
- 2.4 Check if every device is normal and OK without "!" or "?" mark. If any hardware conflict happens, please contact with your technical supports.
- 2.5 Please run "PDRSETUP.EXE" within INSTALLATION CD to start program installation procedure.



2.6 Select language and click “NEXT” to continue. (Default language is Traditional Chinese)



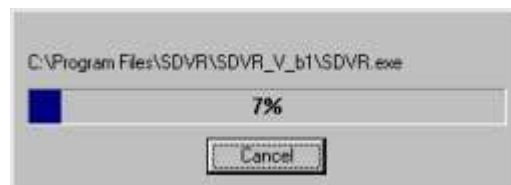
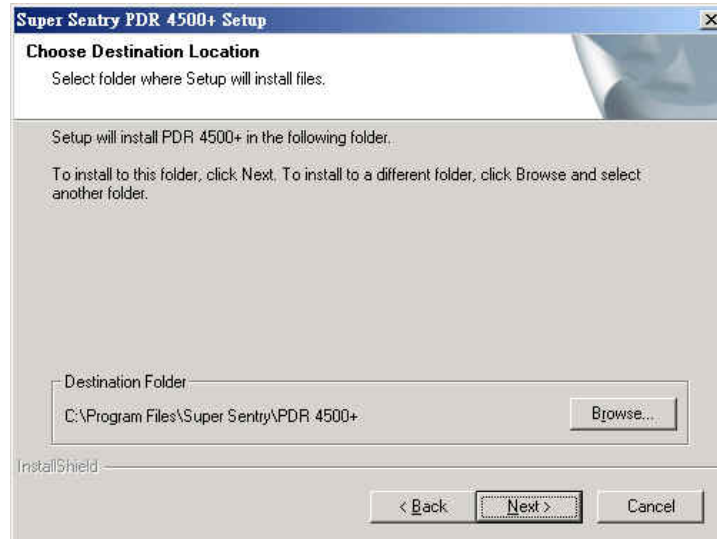
2.7 Select the video source used in your area and click “NEXT” to continue. (Default is NTSC)



2.8 Please select a CPU type of your PC to get a best system performance.



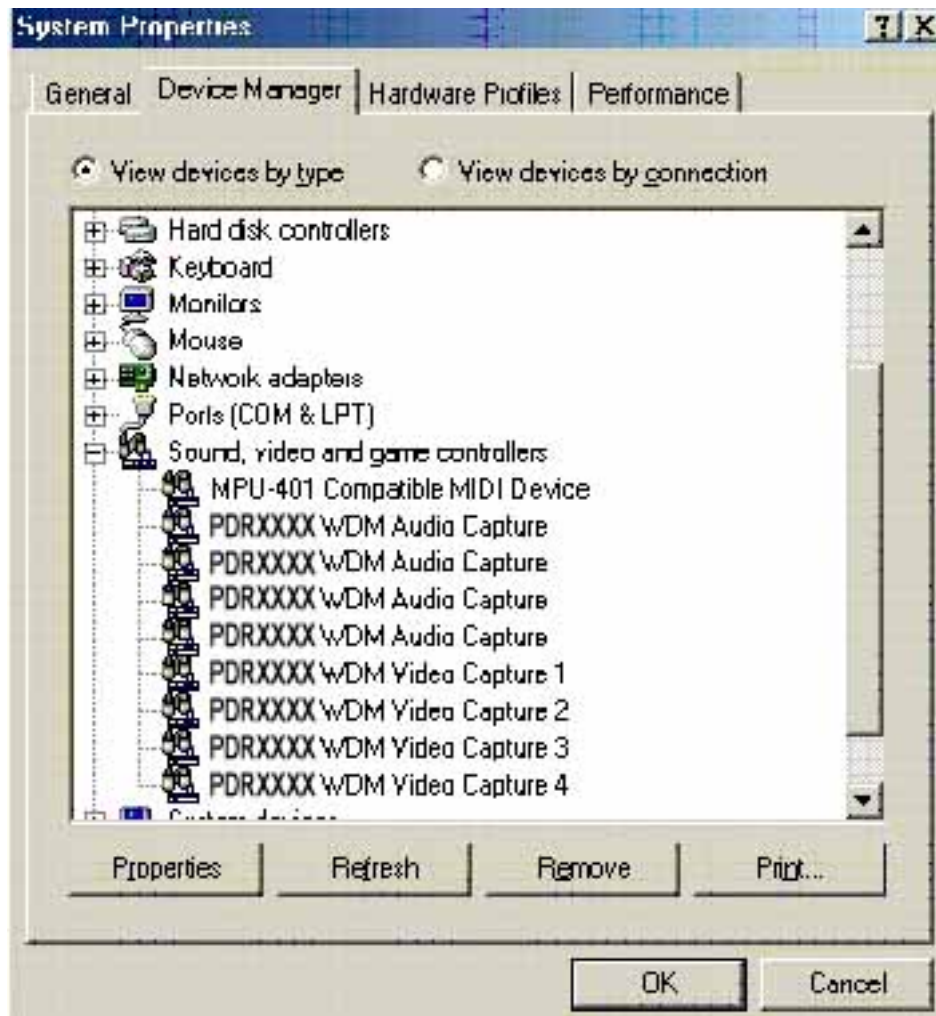
- 2.9 Choose the destination location of the monitoring program you want to install or click “NEXT” as default.



- 2.10 System will request reboot the PC after installation, please click “OK”.



- 2.11 Please check if the “PDRXXXX WDM VIDEO CAPTURE ” in “DEVICE MANAGER” has the numeral order such as 1,2,3,4 (Depending on how many capture cards you installed.)

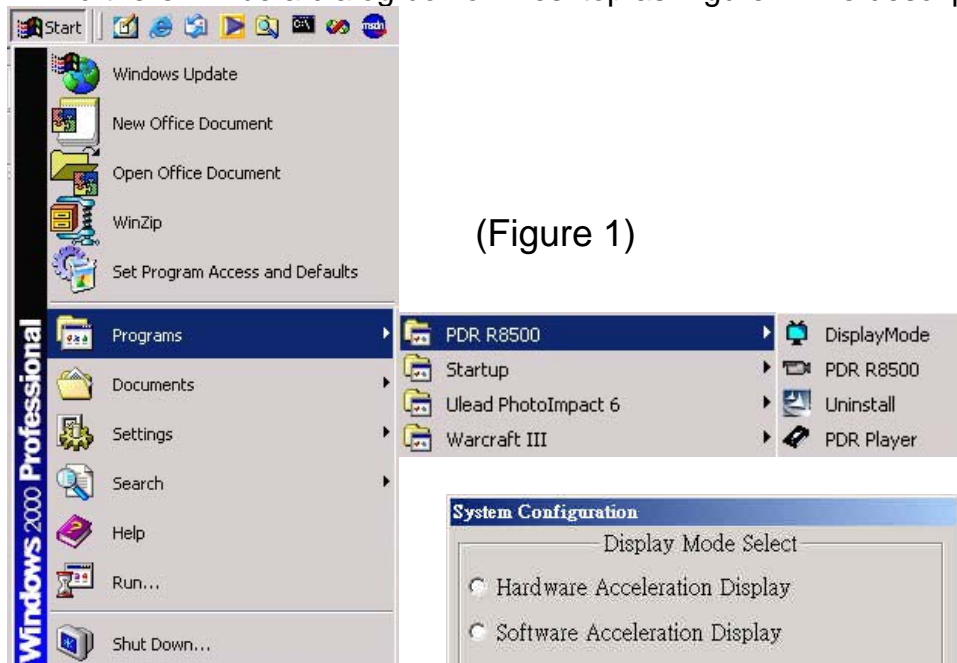


PS : If the program hasn't been installed successfully or the Device Manager looks not like the figure above, please run PDRSETUP to uninstall the program then re-install the program step by step as 2.1~2.11 mentions.

2.12 Display Mode Setting—System Configuration

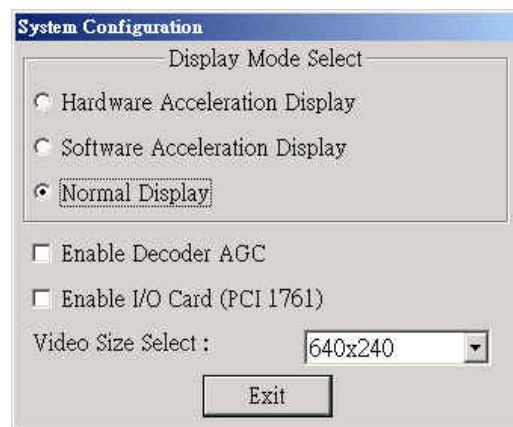
Please select [Start]—[Programs]—[PDRXXXX]—[DisplayMode] on your desktop (as Figure 1)

And there will be a dialog box on Desktop as Figure2. The description is as below:



(Figure 1)

(Figure 2)



- **Hardware Acceleration Display Mode** : For high-end VGA cards such as ATI RENDON 、 G-FORCE III/4 、 SIS 6xx with DDR VRAM. This can increase the performance of PDR series products' and reduce the usage of CPU resource with using high resolution.
- **Software Acceleration Display Mode (Default)** : For middle-level VGA cards such as TNT-2 、 ATI RAGE 、 SIS SD VRAM cards. This uses the software accelerating function provided by chipset manufacturers, but the CPU resource usage is high with normal image resolution.
- **Normal Display Mode (no accelerating)** : For low-end VGA cards, VGA integrated chipsets or PCI VGA card. This uses CPU resources and might cause the CPU resource jam with low image resolution.
- **Enable Decoder AGC (Auto gain control) (Default--Disable)** : If the lightness of camera image is too high while PDR program is running, please enable Decoder AGC.
- **Enable I/O card (PCI 1761)** : If your system is compatible with a I/O card, please enable this function to make it work.
- **Video Size Select** : Select the size your prefer. There are two different size your can choose; 640x240 and 640x480

3. PDR.net MAIN SCREEN INSTRUCTION

If the video displays not correctly while PDR main program is running, please terminate the main program and run the Display Mode of PDR in Program Files. Then switch it to DrawDib Mode and re-run PDR Program. If PDR program still can't work well, it means the VGA card or VGA driver not support Overlay display mode which supports better quality. Please update VGA driver or replace your VGA card.



There are different display modes such as 1, 4, 6, 9, 10, 16 channel models below and can be switched.



4-ch Screen



6-ch Screen



9-ch Screen



10-ch Screen






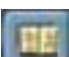











13-ch Screen



16-ch Screen

3.1 Main tool bar operation instruction

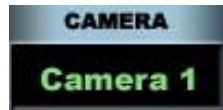


- 3.1.1  Configuration: Details please refer to 4
- 3.1.2  Display mode: Functions please refer to 4-1
- 3.1.3  Lock Mode: Disable or enable any function (Password setting please refer to 4-5).
- 3.1.4  Event Viewer: List all details of events (Need to enable detection mode)
- 3.1.5  Full Screen Mode :Switch screen to full screen.
- 3.1.6  4-ch mode: Select to see 4 channels
- 3.1.7  6-ch mode: Select to see 6 channels and it works with at least 5 video inputs.
- 3.1.8  9-ch mode : Select to see 9 channels and it works with at least 7 video inputs.
- 3.1.9  10-ch mode : Select to see 10 channels and it works at least 10 video inputs
- 3.1.10  13-ch mode : Select to see 13 channels and it works at least 11 video inputs.
- 3.1.11  16-ch mode : Select to see 16 channels and it works at least 14 video inputs.
- 3.1.12  System Off : To power off the PDR server.
- 3.1.13  02/11/19 System Date
- 3.1.14  15:52:31 System Time
- 3.1.15  073907M System states : Display the hard disk remain space.

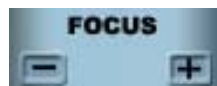
3.2 PTZ Control Instruction



PTZ controller :Pan/Tilt & Zoom Lens controller and PDR program had supported specific brand's Speed Dome. The other kind of PTZ device need to install with a PTZ decoder to make it work.



Camera ID : Display the working camera ID.



Focus : Focus adjustment.



Zoom : Lens zoom in/out adjustment.



Preset :Let the lens point an indicate location and save it for fast view operation. One camera can have 8 preset view.



Save : Click this icon and number icon to finish the preset setting.



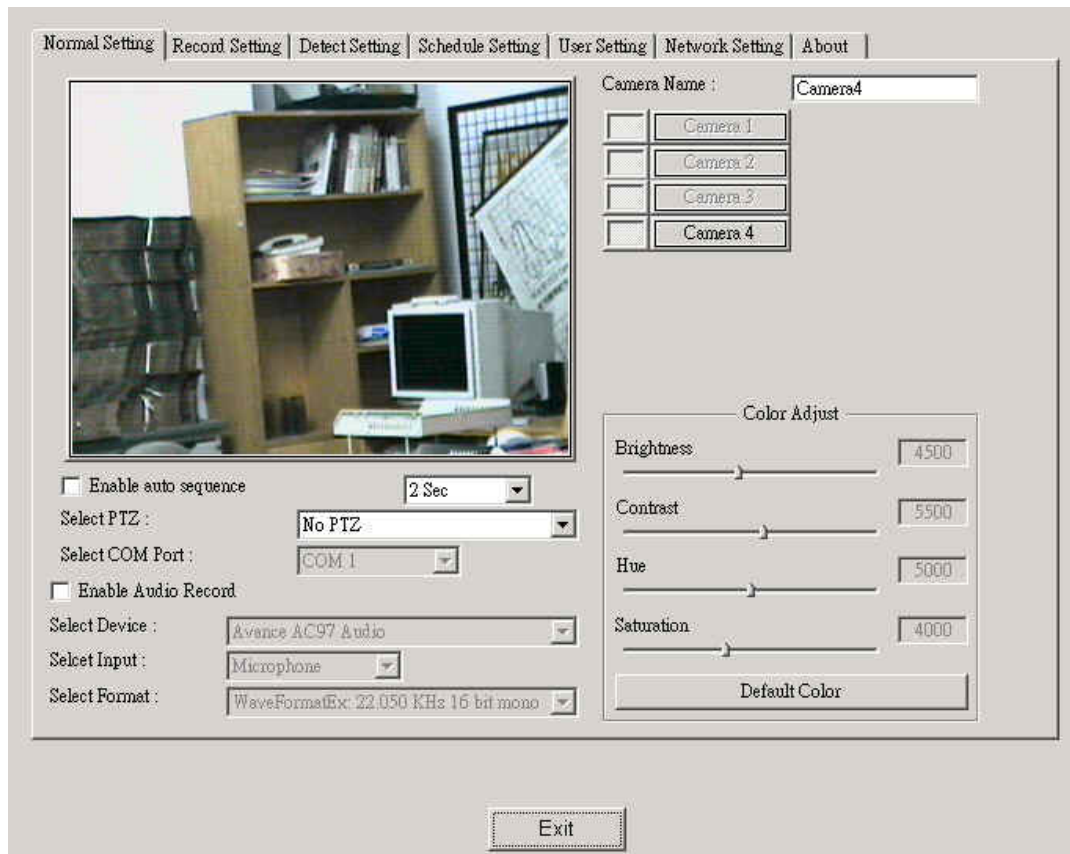
Hide the PTZ control tool bar.

4. Configuration Setting

Before you enter any configuration setting, the system will request user to fill the "User Name" & "Password" for user login as right side picture.



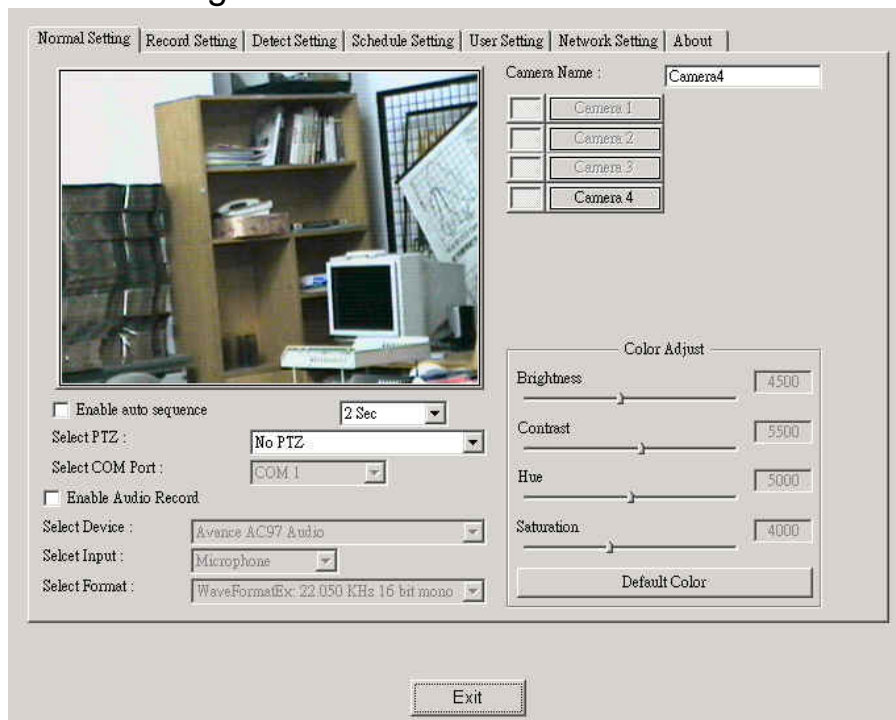
A small dialog box titled "User Login" with a blue header. It contains two input fields: "User Name :" and "Password :". Below the fields are two buttons: "OK" and "Cancel".



The main configuration window has a menu bar at the top with the following options: Normal Setting, Record Setting, Detect Setting, Schedule Setting, User Setting, Network Setting, and About. The window is divided into several sections. On the left, there is a video preview window showing a room with a desk, a computer monitor, and a bookshelf. Below the preview, there are several settings: "Enable auto sequence" (checkbox), "2 Sec" (dropdown), "Select PTZ:" (dropdown menu showing "No PTZ"), "Select COM Port:" (dropdown menu showing "COM 1"), "Enable Audio Record" (checkbox), "Select Device:" (dropdown menu showing "Avance AC97 Audio"), "Select Input:" (dropdown menu showing "Microphone"), and "Select Format:" (dropdown menu showing "WaveFormatEx: 22,050 KHz 16 bit mono"). On the right, there is a "Camera Name:" field showing "Camera4", a list of camera buttons (Camera 1, Camera 2, Camera 3, Camera 4), and a "Color Adjust" section with sliders for Brightness (4500), Contrast (5500), Hue (5000), and Saturation (4000). At the bottom right of the color adjust section is a "Default Color" button. At the very bottom center of the window is an "Exit" button.

- | | | |
|-----|-------------------------|---|
| 4-1 | Normal Setting | Normal Setting : CCD device detail adjustment. |
| 4-2 | Record Setting | Record Setting : Recording detail adjustment. |
| 4-3 | Detect Setting | Detect Setting : Motion detection area set up. |
| 4-4 | Schedule Setting | Schedule Setting : Program or System reboot and recording scheduling. |
| 4-5 | User Setting | User Setting : User name, Password and authority limitation organization. |
| 4-6 | Network Setting | Network Setting : Remote transmission setting. |
| 4-7 | About | About : Software version declaration. |
| 4-8 | Exit | Exit : Press for back to main screen. |

4.1 Normal Setting



- Camera On : Default is enable. Icon floats is camera off and cavernous icon is camera on.



- Select Camera : If you would like to adjust the image states please press the camera button before setting.

Camera Name

- Camera Name : Display function camera IR and the camera name can be changed on directly.

Default Color

- Default Color : Let the brightness, contrast, hue, saturation return to default setting.

Brightness

- Brightness : Select the camera first then adjust brightness depending on your demand.

Contrast

- Contrast : Select the camera first then adjust contrast depending on your demand.

Hue

- Hue : Select the camera first then adjust hue depending on your demand.

Saturation

- Saturation : Select the camera first then adjust saturation depending on your demand.

☐ Enable auto sequence

- Auto sequence : Enable auto sequence function then select the time interval then the system will automatically sequence.

Select PTZ

- Select PTZ : Please select exact PTZ decoder model you use.

Select COM Port

- Select COM port : Please select the exact COM port that PTZ decoder connects.

☐ Enable Audio Record

- Enable Audio Record : Enable or Disable the audio record function.

Select Device :

- Select Device : Select the audio device you would like to use of your system.

Select Input :

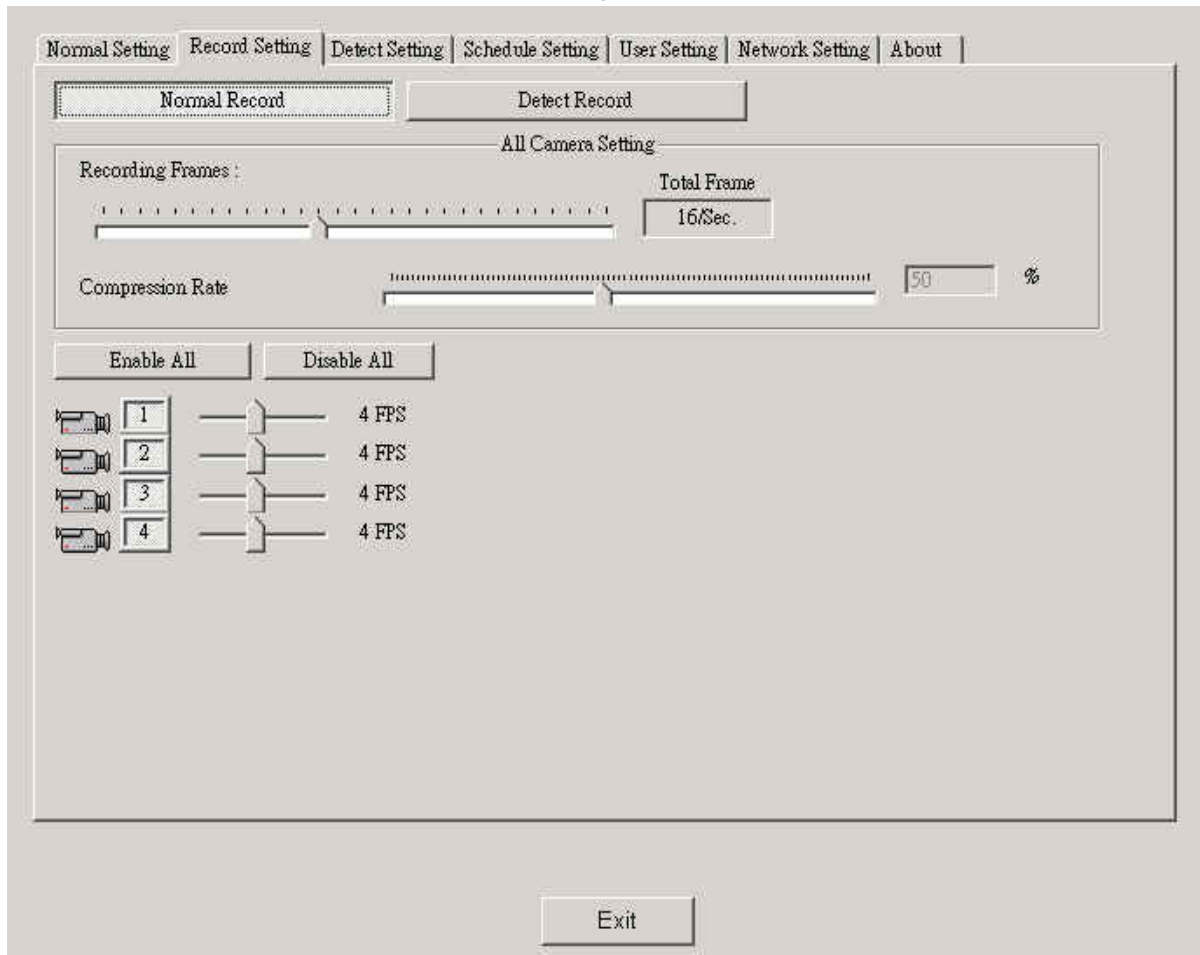
- Select Input : Select the audio input device you would like to use.

Select Format :

- Select Format : Select the format of the audio you would like to save.

4.2 Recording Setting

4.2.1 Normal Record Mode Setting



Normal Record

- Press this icon to start normal record setting.

Recording Frames

- Adjust the total recording frame rate. (More frames be recorded, more hard disk space will be needed. Total Frame 96Sec.)

Compression Rate

- Adjust the recording compression rate. (The higher compression rate can save more hard disk space and the system default is 50%.)

Enable All

- Enable all cameras recording function.

Disable All

- Disable all cameras recording function.

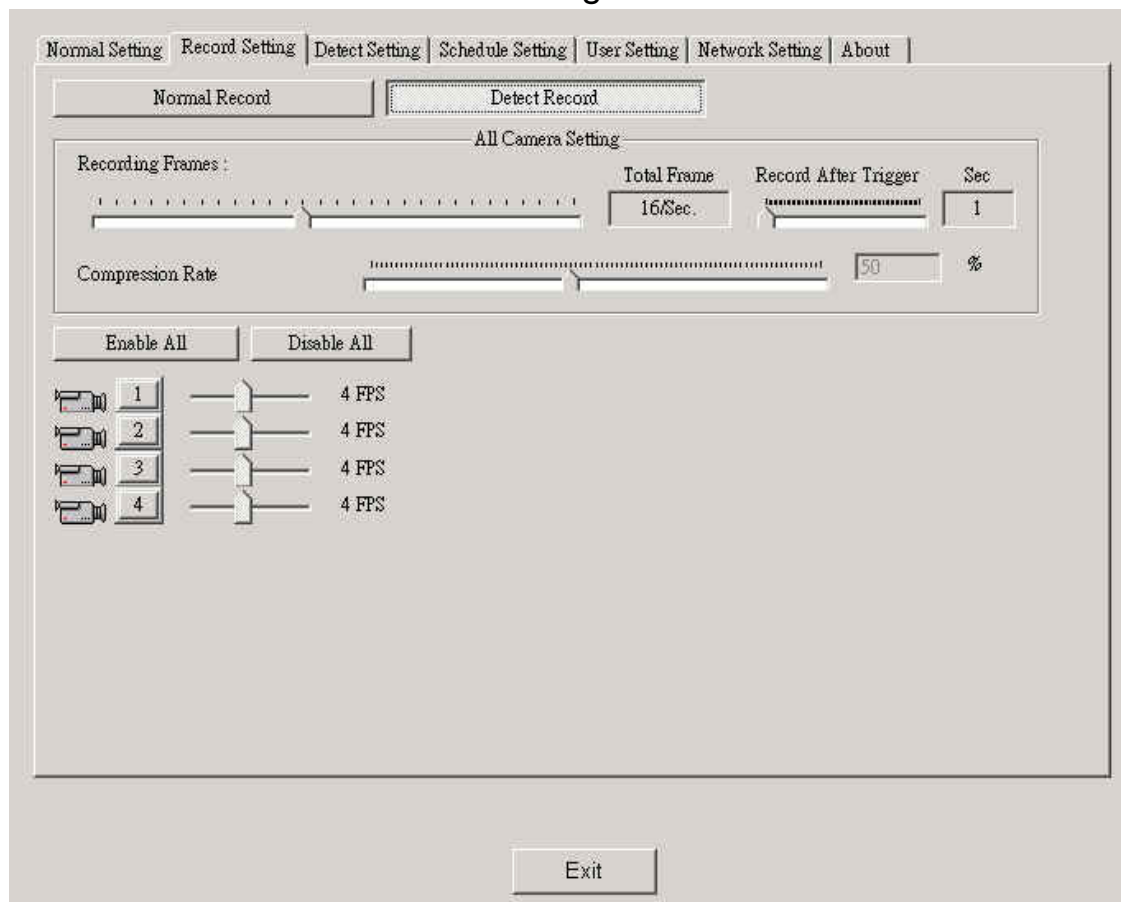
1 1

- Enable/Disable individual camera recording function. (As icon push down 1 is recording state, press again to make it up 1 can cancel recording function.)

16 FPS

- Adjust individual camera recording frame rate.

4.2.2 Detect Record Mode Setting



Detect Record

- Press this icon to start detect record mode setting.

Recording Frames

- Adjust total frame of system. (More recording frames and more hard disk space needed.)

Compression Rate

- Adjust compression rate of system. (Higher compression rate can save more hard disk space. Default is 50%)

Enable All

- Enable all camera detect record functions.

Disable All

- Disable all camera detect record functions.

1

3

- Enable/Disable camera detect record function individually. (As icon push down is recording mode and press it up can cancel detect record.)

16 FPS

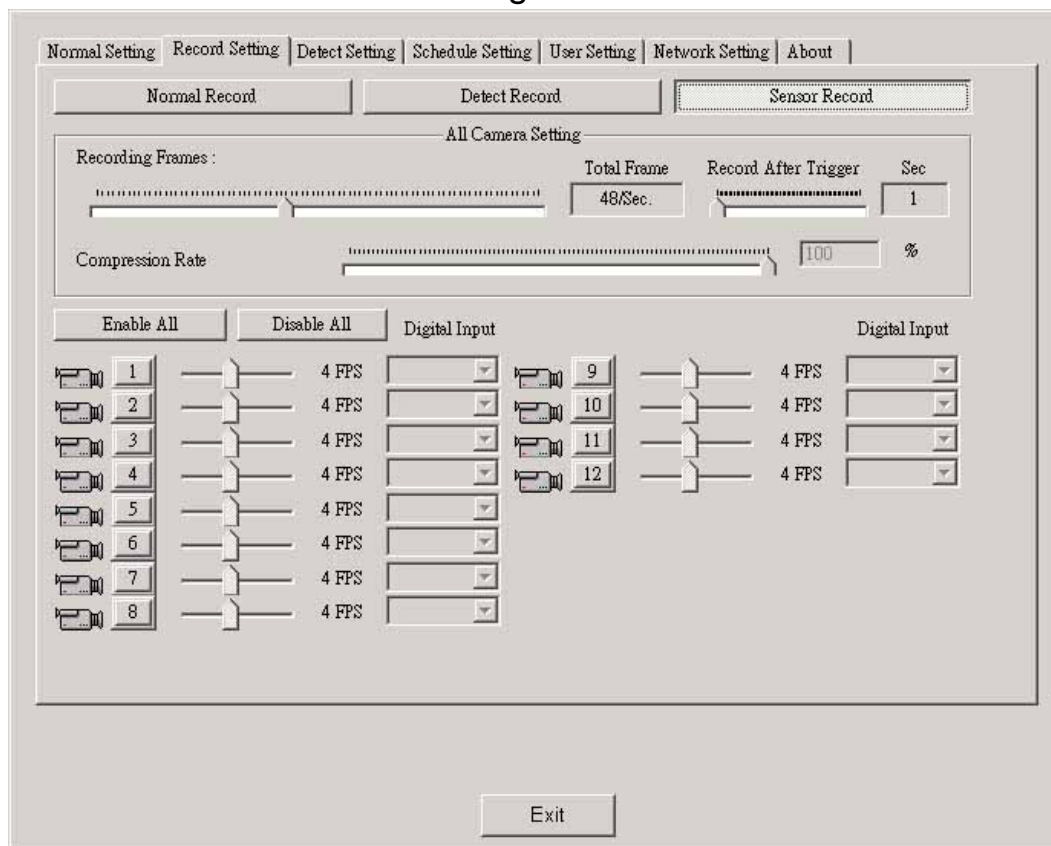
- Adjust individual camera's recording sec.

Record After Trigger

- Adjust all cameras' recording sec after event trigger. (If set in 1 sec, that means system will keep record one sec after event trigger.)

- Remark : Weighted record mode—Press **Normal Record** & **Detect Record** together can enable the weighted record mode that enable your system to have multi-working function to have normal record & detect record in the same time.

4.2.3 Sensor Record Mode Setting



Sensor Record

- Press this icon to start sensor record mode setting.

Recording Frames

- Adjust total frame of system. (More recording frames and more hard disk space needed.)

Compression Rate

- Adjust compression rate for system. (Higher compression rate and more hard disk space be saved. Default is 50%)

Enable All

- Enable whole camera sensor record function.

Disable All

- Disable whole camera sensor record function.

1

3

- Enable/Disable camera sensor record function individual. (As icon push down is recording mode and press it up can cancel sensor record.)

Record After Trigger

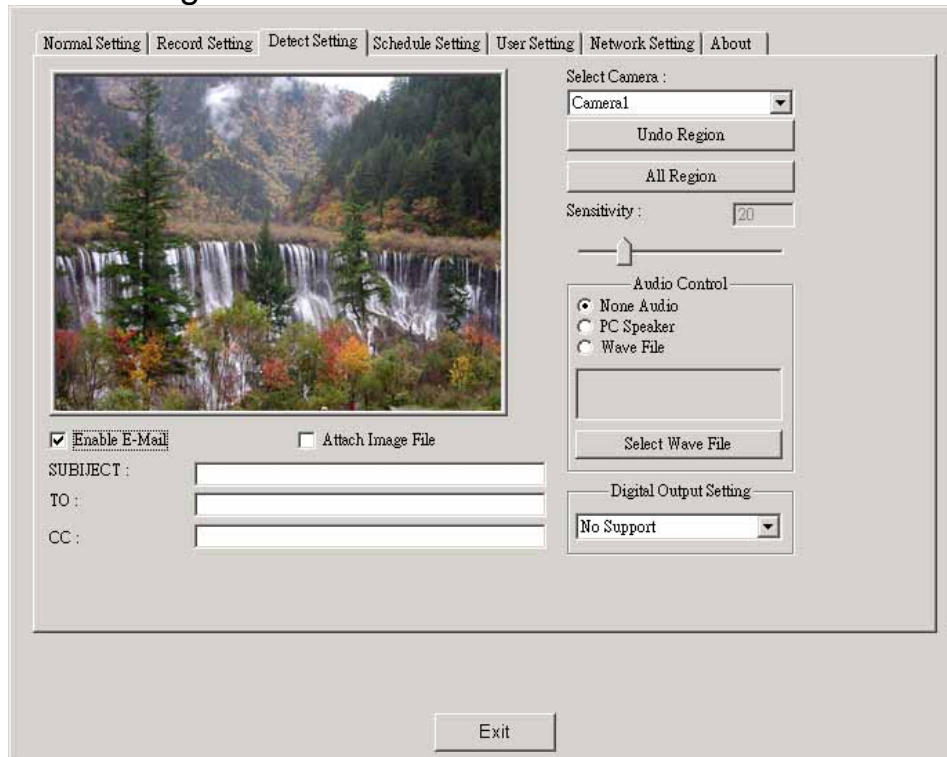
- Adjust whole camera's recording sec after event trigger. (If set in 1 sec that's meant system will keep record one sec after event trigger.)

Digital Input

- Select individual digital input sensor as Input 00

- Remark : Multi-detect record mode — Press Normal Record , Detect Record & Sensor Record together can enable the multi-detect record mode that enable your system to have multi-working function to have no only normal record & detect record and also detect external digital input signal to record in the same time.

4.3 Detect Setting



Select Camera



Undo Region

All Region

Sensitivity

Audio Control

Select Wave File

☒ Enable E-Mail

☐ Attach Image File

SUBJECT

TO :

CC :

Digital Output Setting

- Select the camera that you would like to set motion detection. (As you select camera ID then you can execute the motion detection accordingly.)
- To have motion detection region only need to keep press left key of mouse then drag demanded region. (Can be remarked at least 255 different size regions and as anything pass through the remark region that will trigger motion detection record, e-mail or sound alarm etc.)
- Delete previous detection region setting.
- Press it to have full region motion detection.
- Adjust the motion detection sensitivity (The number smaller and detection more sensitive. Default is 20.) (If the image signal too noise or the detect region includes heavy-shaking object, please turn to higher number or set another region to decrease the detect error situation.)
- Select if send PC Speaker alarm or specific Wave file out as event trigger.
- Select Wave file for audio alarm out and can re-record wave file by yourself for your favorite.
- Select if send e-mail alarm out as event trigger. (The network setting accordingly please refer to 4-6 and select "MAPI" mode that your Outlook Express need to be set in advance.) (Please stop PDR main program to test if your Outlook E-mail function work OK or not, if Outlook can't work well that the PDR E-mail function will lose efficacy.)
- Select if attached image file as sending alarm e-mail out.
- Fill in subject of alarm e-mail.
- Fill in first receiver's e-mail address.
- Fill in second or more receivers' e-mail address.
- Digital output setting and please select the port number that the digital signal output.

PORT 02

4.4 Schedule Setting

Reboot System

- Can select if reboot whole system **Every day** or **Every week** regularly & automatically make sure system work smoothly & well. (Suggestion : Rebooting system one time everyday can keep the stability of Windows.)

Restart AP

- Can select it to restart PDR program everyday or every week automatically and make sure program operation well.

Disable

- Select this to disable the automatic reboot system or restart AP function.

Item	Operation Mode	Day or Week	Beginning Time	End Time

Add

- Add new schedule record setting.

Delete

- Delete one set schedule record.

Modify

- Modify current schedule record setting.

Beginning Time

- Select beginning time of schedule setting.

End Time

- Select end time of schedule setting.

(N)Normal Capture

- Normal Capture : Press it to set all cameras' full time record on list.

(D)Detect Capture

- Detect Capture : Press it to set all cameras' detect record on list.

(S)Sensor Capture

- Sensor Capture : Press it to set all cameras' sensor trigger recording on list.

Camera Setting

- Camera Setting : Select individual camera to have normal, detect or sensor recording setting on schedule list.

4.5 User Setting

User Name	Account Setting	Playback Files	Check Event	Config Setting	Exit Program	Client User
1	Enable	Enable	Enable	Enable	Enable	Enable
2	Enable	Enable	Enable	Enable	Enable	Enable

New User Delete User

User Define

User Name :

Password :

Confirm Password :

Add User

☐ Account Setting ☐ Config Setting

☐ Playback Files ☐ Exit Program

☐ Check Event ☐ Client User

Exit

User Setting

- Overview of current users' name & authority function states. (Please refer to the figure above.)

New User

- Press to add new user setting.

Delete User

- Delete current users that already be set on the list.

User Name

- Fill in User Name.

Password

- Fill in password.

Confirm Password

- Confirm password.

Account Setting

- Select to authorize account setting function.

Playback Files

- Select to authorize playback file searching function.

Check Event

- Select to authorize event list checking function.

Config Setting

- Select to authorize configuration setting function.

Exit Program

- Select to authorize program off function.

Client User

- Select to authorize client user functions like remote monitoring accordingly.

Add User

- Click to finish new user setting as above selection done.

- P.S. System default without any preset password and only blank the space then press OK to enter any configuration screen you would like to setup. Once you set any user name and password, the whole system will be protected by the password. You can login in User Setting for deleting whole user name & password in order to get default setting.

4.6 Network Setting

Select Camera

•Click the selected camera's icon to allow remote transmission function.

Enable All

•Click the button to enable all cameras' remote transmission function.

Disable All

•Click the button to disable all cameras' remote transmission function.

Enable Stream Transmission

Select to enable stream transmission function.

Select Frame Rate

•Adjust the output frame rate of remote transmission of each cameras.(1fps~6fps) 3 f/s

Select Begin Port

•Select the begin port for remote transmission. (Min. is 2000) 2000

Quality Select

•Remote transmission image quality adjustment and it can be set in Normal/High/Best quality.

Enable Web Image Output

•Enable web page broadcasting function which can allow multi-client users to access for remote viewing pu Medium Quality

Select web template directory

•Set the web template recording files saving directory. C:\Program Files\Super Sentry\PDR 4500+

Enable MAPI

•Select MAPI to send e-mail alarm by OUTLOOK EXPRESS.

SMTP Server

•Select SMTP to send e-mail alarm directly by PDR program via SMTP server but not OUTLOOK EXPRESS.

User E-Mail

•Fill in the e-mail address that e-mail alarm needs to be sent. (To fill in as you select SMTP server for e-mail alarm.)

Current IP Address

•Display current IP address of PDR server automatically.

Enable send IP address to E-Mail?

•Support dynamic IP and the automatically display IP function. It can let client user access PDR server easily and the administrator can enable this function by filling in indicated client users' e-mail address to announce correct IP address for access.

4.7 About

Version Declaration : It includes product name, Copyright declaration, service e-mail and software version etc.



5. Playback Setting

5.1 Playback Operation Instruction



YY/MM

- Select the Year/Month **2002/11** playback.

18 19 20

- Select the date (While means no record file, green means with record files and red means the record files are under playback.)

HOUR

- Select the hour **15** to playback.

MIN

- Select the minute **58** to playback. (Each file length will be a little different, it depends on the data size.)



- Play key. (Normal speed.)
- Stop key.
- Reverse key. (Normal speed)
- Fast forward play key.
- Fast backward play key.
- Pause key



- Seek bar for fast forward & backward (Can drag the bar forward or backward only and press the right/left arrow is slow playback.



- Display screen (Multi-channel display function and you can point to the indicated image and use double-click to zoom it.)

02/01/07 21:21:28 600

- The display status includes date, house, minute, second etc.




- Back to main program.
- PS : Double-click can zoom in the image and switch the images.

5.2 File Backup

5.2.1 To backup your image file depends on your demand, please follow instruction below.

Save BMP File
Save JPG File
Print Image
Save AVI File
Backup File

Press "Pause"  under playback mode then right-click there. There will be a selection windows which allows you to save and convert the files as BMP 、JPG 、Print Image 、AVI 、Backup File. Assign the file name & folder for selected image after select the transfer format, then execute the converting process.

Save JPG File
Save BMP File

- Save BMP/JPG file : Save the captured pictures as BMP or JPG formats after assign the file name & folder.

Print Image

- Print Image : Select the image you need and select "Print Image" to print it out. (Please make sure your printer had been setup & work well.)

Save AVI File

- Save AVI File : Save the selected record files as AVI format. (Please refer to 5.2.2)

Backup File

- Backup File : Backup record files to assigned hard disk and folder. You can select a period of time to backup and press OK to backup accordingly. (Please refer to 5.2.3)



5.2.2 If you would like to convert the recording file to AVI format, please select “Save AVI File” **Save AVI File** as 5.2.1 mentions then choose the period that need to be converted and there will be a dialog box as below for converting.

File time : File Time : The file date & time you would like to save as AVI format.

Select end time : Select beginning time : Start time

Select beginning time : Select end time : Ending time.

Please indicate the path for saving AVI then press **Start** to run AVI saving. (Attention!! The AVI file size is quite big please don't convert too long period data. If you need to convert many files or a long period data please use our PDR backup program within your Installation CD for file converting. Please restart your Windows after a period backup process to keep the stability of Windows.)



5.2.3 Backup File mode : Please select **Backup Files** as figure 5.2.1 . After selecting, there will be a dialog as below and it will show out the recorded file for your selection. Please drag the files you need from **Source Files** to **Select Files** then set **Backup to:** & indicate path from **Browse...** . Click **Copy** to start backup procedure.





6. Event List (List down whole motion detection events.)

PS: Need to enable detect record function or it won't work without motion detection.





YY/MM •Year/Month searching **2002/11**

19 •Date searching (Green **20** has event record, red **19** searched date, white **18** has no event record.)

HOURL •Hour searching : Searching event by time.(Click  to get last one hour's data and click  to get next one hour's data.)

CAMERA •Camera Setting : Select the camera you would like to search.

 •Fast Seek Bar : If single event over 4 frames recorded, you can do fast searching by the bar.

 •Turn off the event list function.

Camera	Begin Time	End Time	Event Data	Frames
Camera1	11/09 15:48:00	11/09 15:48:04	動態偵測模式	16 fs
Camera1	11/09 15:48:05	11/09 15:48:06	動態偵測模式	16 fs
Camera1	11/09 15:48:06	11/09 15:48:07	動態偵測模式	16 fs
Camera1	11/09 15:48:21	11/09 15:48:22	動態偵測模式	11 fs
Camera1	11/09 15:48:23	11/09 15:48:24	動態偵測模式	11 fs
Camera1	11/09 15:48:24	11/09 15:48:25	動態偵測模式	16 fs
Camera1	11/09 15:48:26	11/09 15:48:27	動態偵測模式	16 fs
Camera1	11/09 15:48:27	11/09 15:48:28	動態偵測模式	16 fs
Camera1	11/09 15:48:28	11/09 15:48:29	動態偵測模式	16 fs
Camera1	11/09 15:48:30	11/09 15:48:31	動態偵測模式	16 fs
Camera1	11/09 15:48:31	11/09 15:48:32	動態偵測模式	16 fs

Single Event Searching: Fast searching by the screen list and it also can let you know about the event location, time, recording period.

Individual Images Display.

7. PDR Player

7.1 PDR Player Installation

7.1.1 Please click the
the installation.



PDRSetup.exe
Setup Launcher
PDR Player

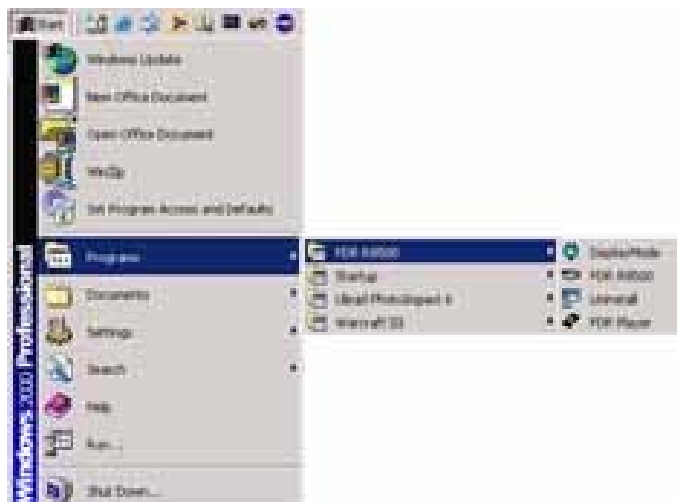
under the root of CD-ROM device and run



7.1.2 Please choose the destination location and click “Next”.

7.1.3 Please choose “Reboot” in order to finish the PDR Player installation after
entire procedure has been done.

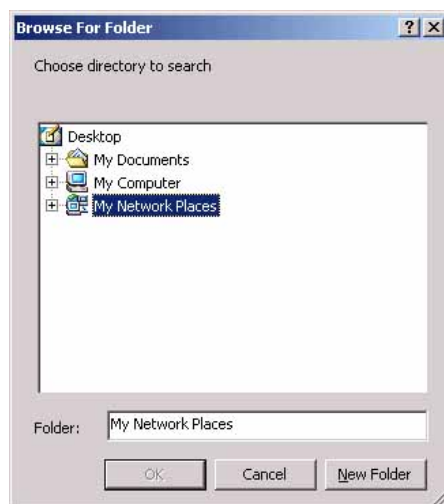
7.1.4 Please run PDR Player after reboot..



7.1.5 Please assign the location of files (Figure 1 , 2) or use automatic search (Figure 3)



(Figure 1)



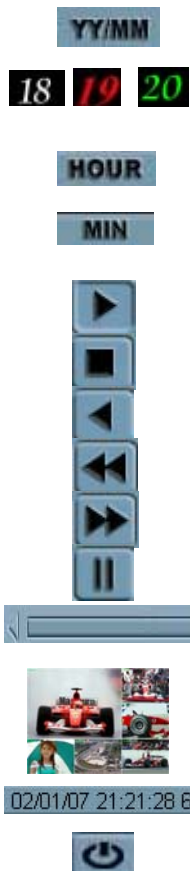
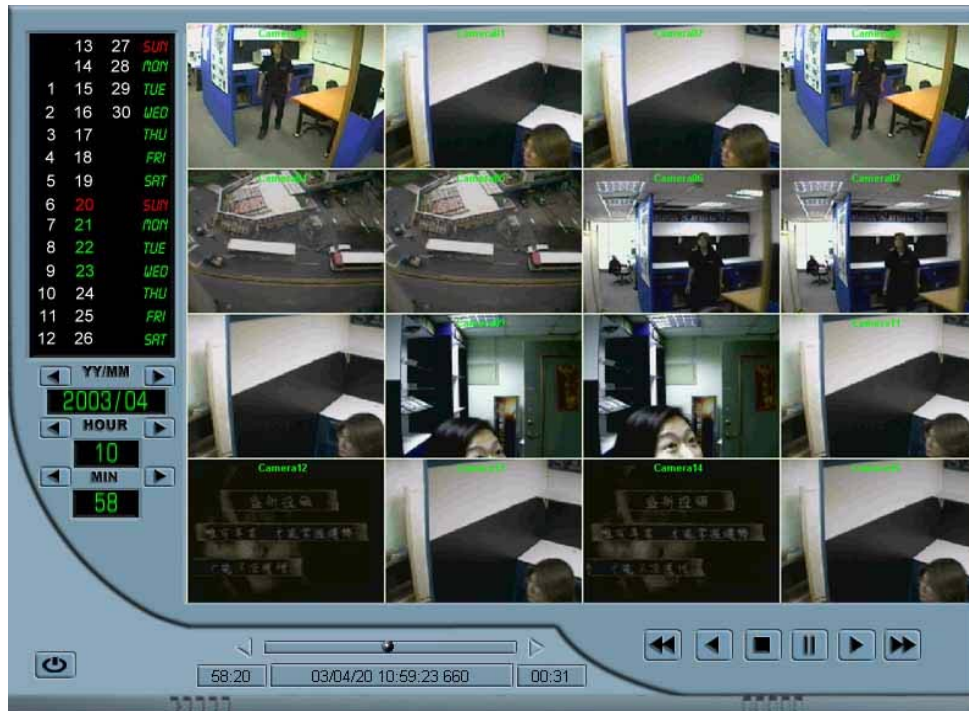
(Figure 2)

PS. Please choose Network Neighbor and find the folder that files are saved when the files locate at a remote computer (That folder has to be enabled share function)



(Figure 3)


7.2 PDR Player程式操作



- Select the Year/Month **2002/11** playback.
- Select the date (While means no record file, green means with record files and red means the record files are under playback.)
- Select the hour **15** to playback.
- Select the minute **58** to playback. (Each file length will be a little different, it depends on the data size.)
- Play key. (Normal speed.)
- Stop key.
- Reverse key. (Normal speed)
- Fast forward play key.
- Fast backward play key.
- Pause key
- Seek bar for fast forward & backward (Can drag the bar forward or backward only and press the right/left arrow is slow playback.
- Display screen (Multi-channel display function and you can point to the indicated image and use double-click to zoom it.)
- The display status includes date, house, minute, second etc.
- Back to main program.
- PS : Double-click can zoom in the image and switch the images.

7.2 File Backup

Save BMP File
Save JPG File
Print Image
Save AVI File
Backup File

Click “Pause”  under playback mode then right-click there. There will be a selection windows which allows you to save and convert the files as BMP 、JPG 、Print Image 、AVI 、Backup File. Assign the file name & folder for selected image after select the transfer format, then execute the converting process.

- Capture Picture : Select either BMP or JPG and name the file. After it, please choose the folder you would like to save.
- Print Image : Select the image you need and select “Print Image” to print it out. (Please make sure your printer had been setup & work well.)
- Save AVI file : Save the selected record files as AVI format.
- Backup File : Select the date and time of the file (Figure A) and assign the hard disk and folder (Figure B) you want to backup, then name the file and save it as WMV files

B



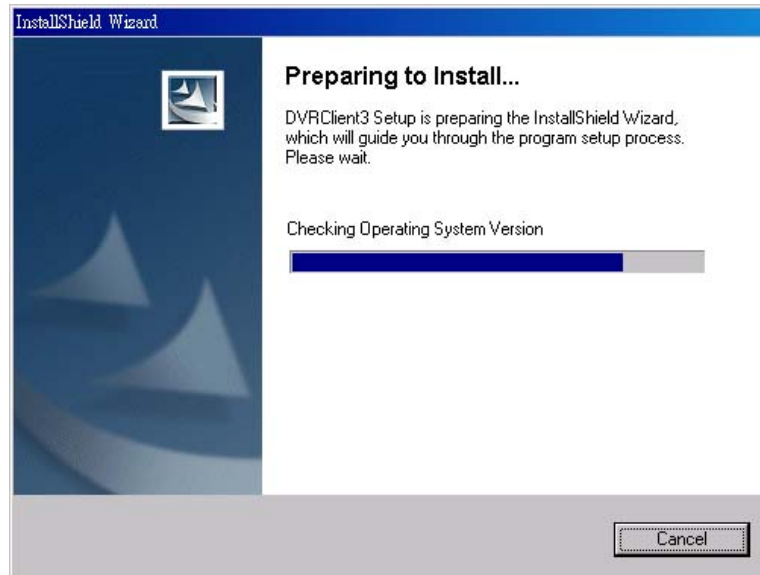
A



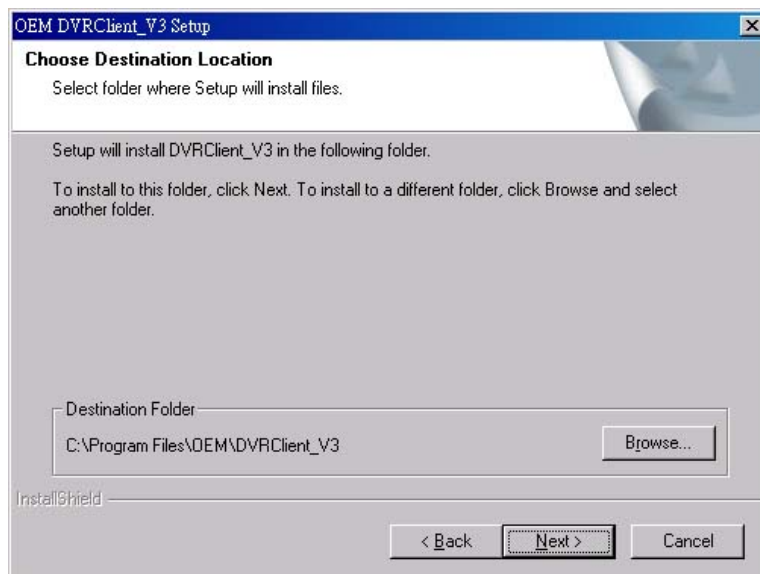
8. Client Program

8.1 Client program installation instruction

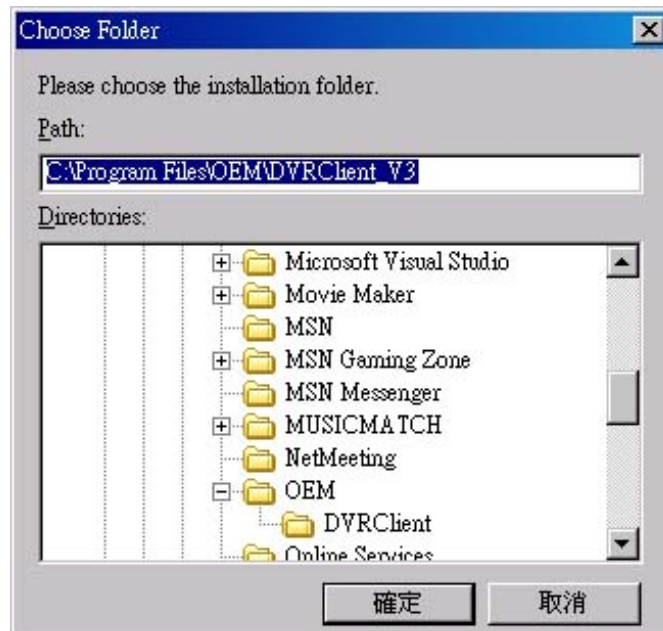
8.1.1 Please click PDR Client program's SETUP.EXE within installation CD to install.



8.1.2 Please select destination folder and click “Next” to continue.



8.1.3 Please choose the destination folder and click “OK” to next step

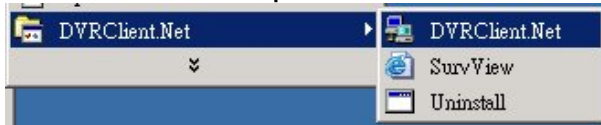


8.1.4 After installation process has been done, please select “Yes, I want to restart my computer now.” to finish the Client program installation.

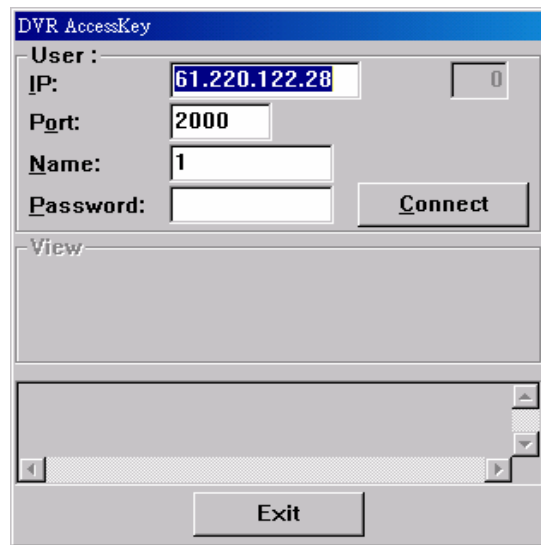
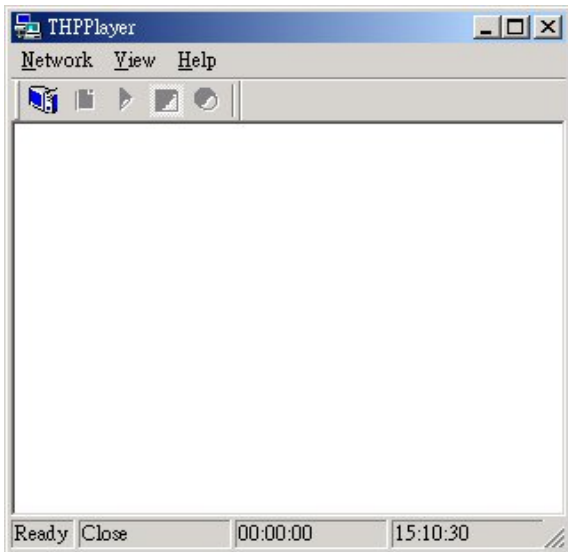


8.2 Client program operation

After PC restart, please run PDR Client Net program,



Then the Client program is enable as the figures below:



IP:

IP : Please enter IP address of PDR server for remote connection.

Port:

Port : Please enter the beginning port of PDR server

Name:

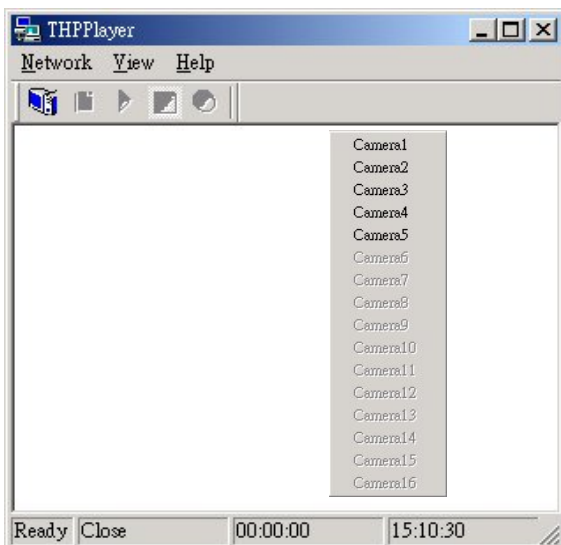
Name : Please enter login name. (Please refer to 4.5 user setting and client user need to be authorized in "Client User".)

Password:


Password : Please enter password.

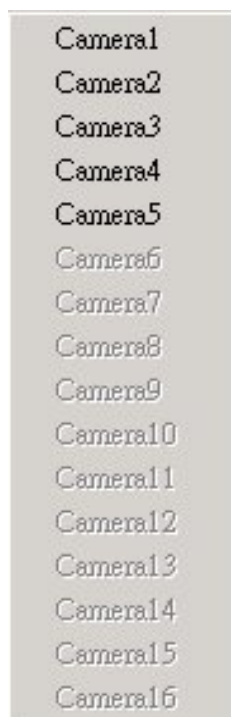
Connect

Connect : Start remote access. If access success, there will be two dialogue boxes as below

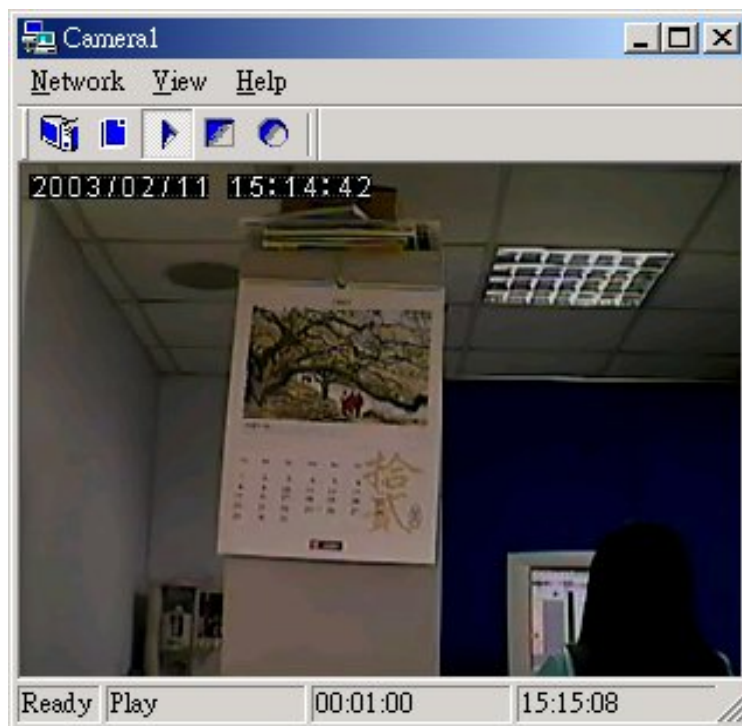


8.3 Remote monitoring image play setting

Please select camera from “Figure 1” then  key at “Figure 2” will be pushed down automatically to play the selected camera image. Regarding the detail setting, please refer to the instruction of “Figure2” below.



(Figure 1)



(Figure 2)

Network

Change PDR server setting like connection, saving path, Play, Stop, Record and etc.

View

Tool bar selection setting and select if hide fast tool bar or not.

Help

About the Client program including instruction & version description.

Camera

Select the camera you would like to see and the camera ID with black color means the camera is allowed to be accessed.



Connection Setting



Recording saving path setup



Image play



Stop image play



Star record

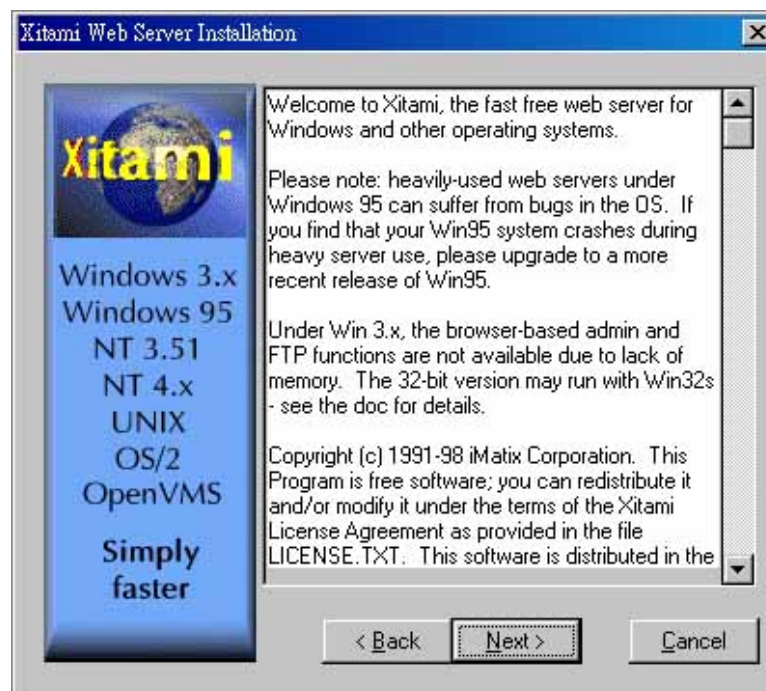
9. WebPage Broadcasting Setup Instruction.

9.1 Xitami web server installation

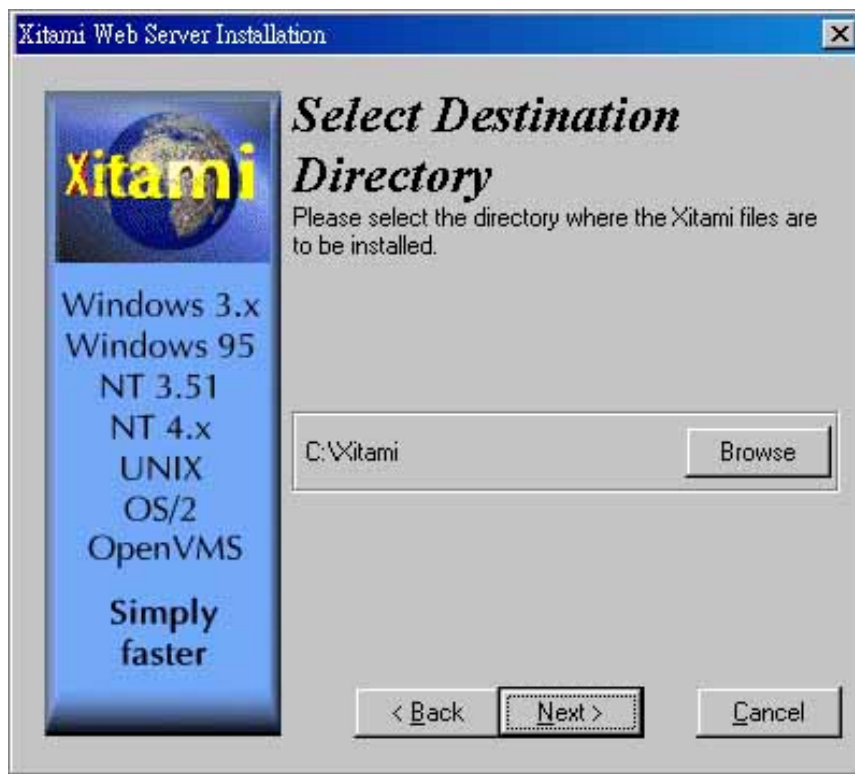
- 9.1.1 Please execute SETUP.EXE that within installation CD under WEB\WEBSERVER folder to start program install. (Please make sure your network card had ready for remote monitoring accordingly and IP setup also get ready that you can PING the IP from remote site to check if it work well.)



- 9.1.2 Please check the version of Xitami program then press “Next” to next step.



9.1.3 Please select destination directory and click “Next” to next step.



9.1.4 Please select the program group you would like Xitami belong to and click “Next” to next step.



9.1.5 Leave the “User name” & “Password” blank and click “Next” to next step.



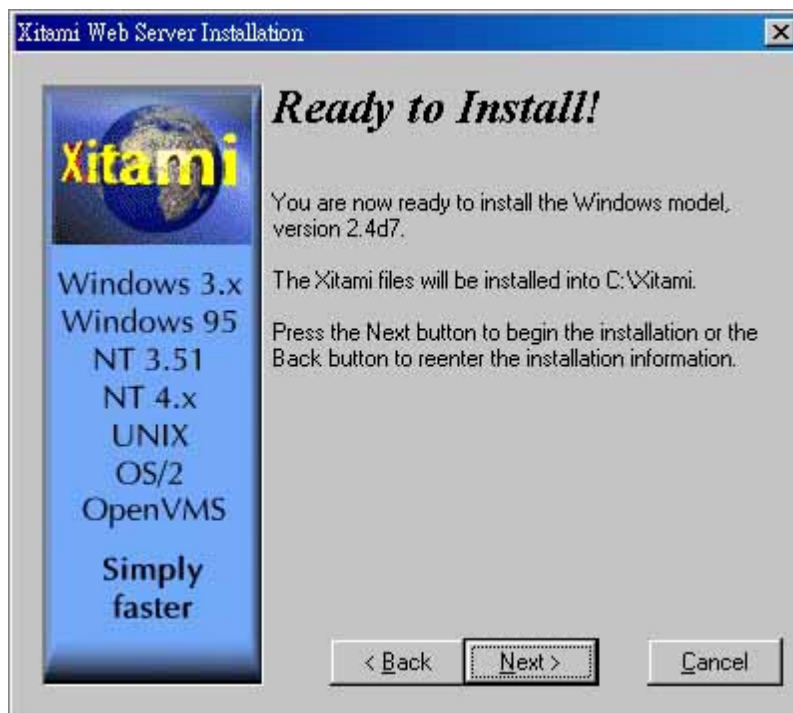
9.1.6 Please select “Yes” to let Xitami program run automatically as you logon to Windows and click “Next” to next step.



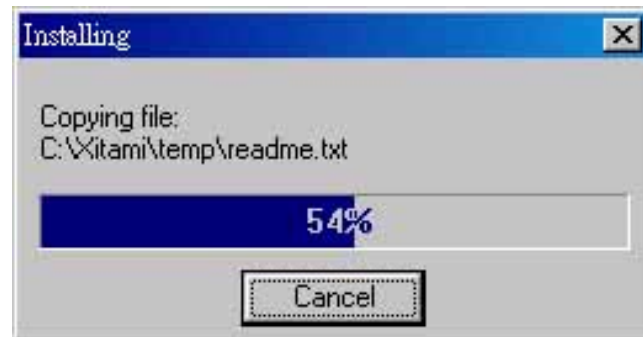
9.1.7 Please select "Normal-if you run several servers" and click "Next" to next step.



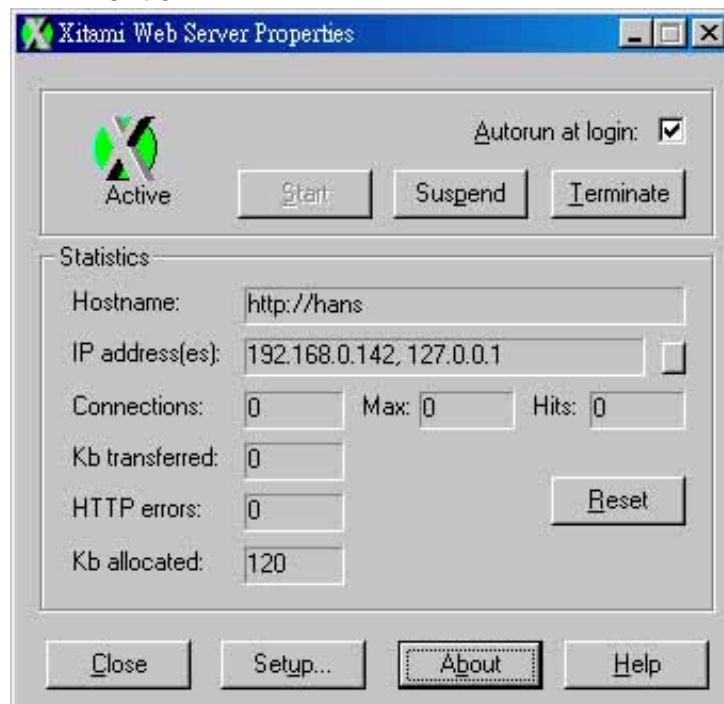
9.1.8 The installation remind you that Xitami program had installed ready and click "Next" to run installation.



9.1.9 During the installing, it will process the entire installation procedure automatically.



9.1.10 While Xitami is running, a dialogue box witch displays the current program states shows out as below. If you need to reload the program, please click "Reset" to reload. If you press "Setup..." , there will be a dialogue showing out as 9.1.11 mention.



9.1.11 Please click "OK" to close this dialogue box.



9.2 PDR WEB CAMERA Setup :

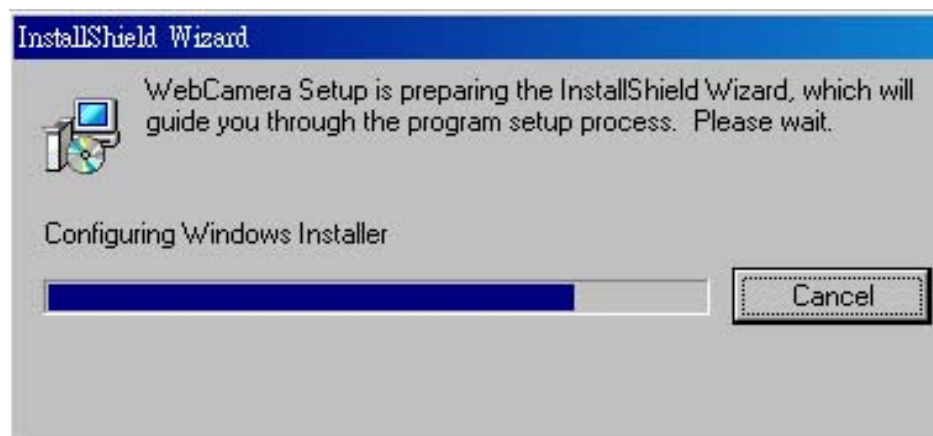
9.2.1 Please make sure the Xitmai program had installed and there will be an icon on your desktop tool bar. You can run web page program as 9.2.2 instruction.



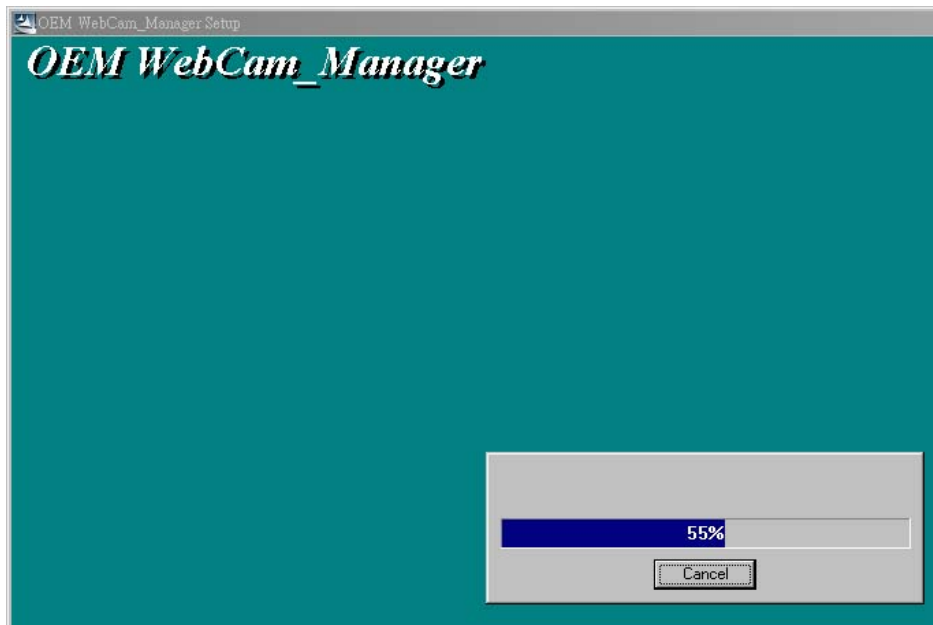
9.2.2 Please run SETUP.EXE in WEB/Web-CAMERA folder within installation CD to start installing. The procedure is listed as follows:



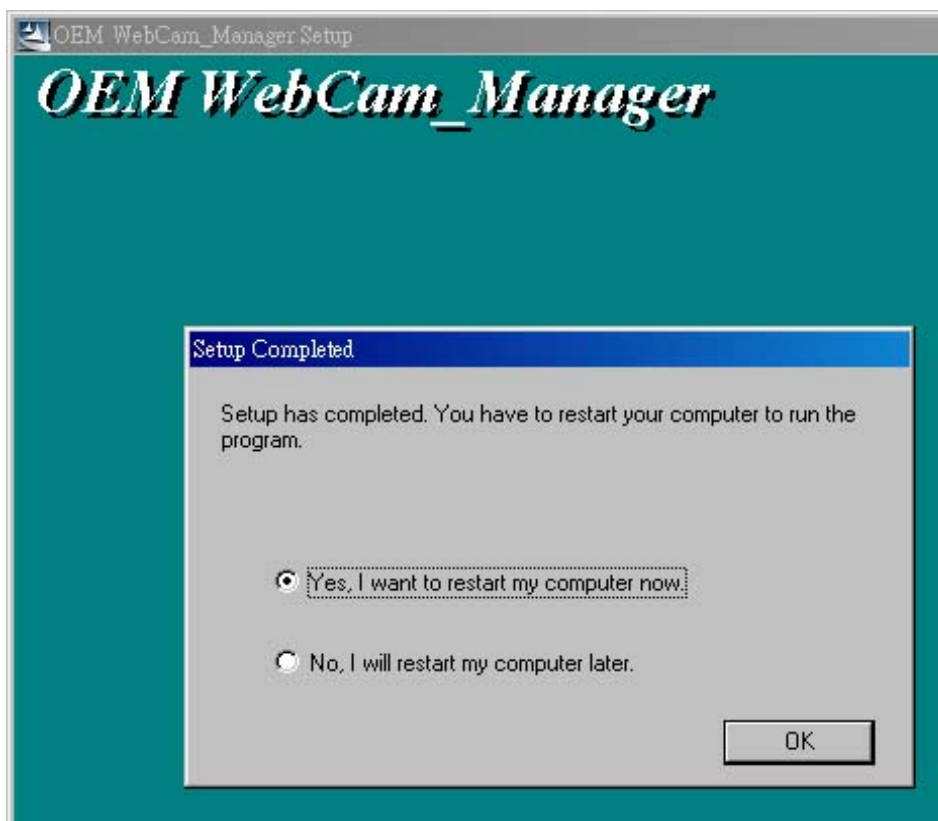
9.2.3 PDR WEB CAMERA program under installing



9.2.4 PDR WEB CAMERA starts to install and it will automatically run until the procedure has been completed.



9.2.5 After installation completed, please select restart computer to finish the WEB CAMERA program installation



9.2.6 As PDR main program restart, please change the web template directory to C:\Xitami\webpages\DVRUser\ of Network Setting then enable your webpage broadcasting function.



9.2.7 Web Camera browsing operation instruction

First, find a remote PC locates remote site and click Internet Explore. Secondly, key in PDR server's IP address and wait 5~10 sec. It will have a quad remote monitoring screen. You can select different camera image to view from selection screen for remote monitoring purpose.



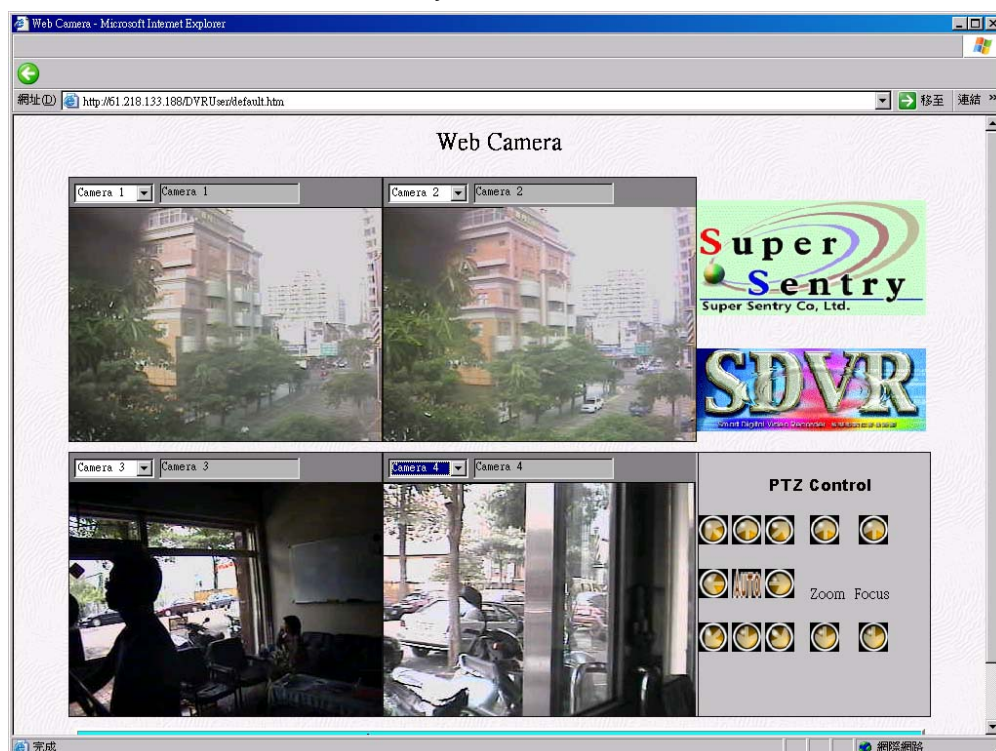
9.3 PDR Remote Access Instruction:

9.3.1 Please ensure the computer you would like to use can access Internet first and click Internet Explorer on the desktop. Eventually, enter the IP address of your PDR server at Location like the figure as below.

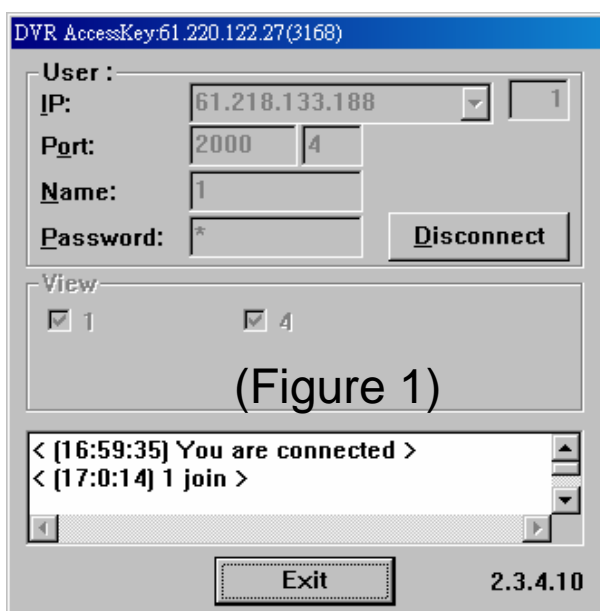
At this step, you can choose either DVR Web Camera or DVR Stream



9.3.2 After choose "Welcome to DVR Web Camera", you will have a screen as below and can choose the camera your would like to monitor.



9.3.3 After choose "Welcome to DVR Stream", please right click each frame and get the screen like Figure 1. Please right click the mouse on the frame and choose the camera you would like to monitor (Figure 2) after click "Connect" at the dialog like Figure 1. This function provides synchronous multi-monitoring function. You can monitor the cameras having different IP address at the same time by clicking the frame and following steps above simply. Clicking "MPEG-4 Client" or the time statue below can get full screen view.



9.3.4 Record Setting :

1. Double click the frame at DVR Stream and choose Set Capture File.



2. Choose the destination folder and name the file you would like to save
(default is WMV format)
PS. In order to avoid the conflict of file names, please use different names for
the files when you want to save.



3. Please Choose “Record” after the destination folder has been set and
you can play the records whenever you want.

