

Duolink[®] ImageTool

USER MANUAL

Duolink® ImageTool is an image analysis software that objectively quantifies PLA signals and cell nuclei.

Table of Contents

Product Information	5
Image Acquisition	6
Start up – Software Installation	7
Fluorescence Analysis	8
Brightfield Analysis	12
Support Information	16

Product Information

USB FLASH DRIVE

The USB flash drive contains the installation file for Duolink ImageTool.

The USB flash drive has a 16 GB storage capacity to facilitate image transfer or storage of analyzed projects.

NOTE! The USB flash drive works as a software protection key. All files and folders on the device at delivery are therefore vital. The USB flash drive must be plugged into the computer to run the software in full mode.

IMAGE IMPORT

The import function allows direct image import from four well-known microscope brands: Zeiss (.zvi), Leica (.lif), Olympus (.oif) and Nikon (.ics). It is also possible to import jpg and tiff images (grayscale and color).

SOFTWARE UPDATE

The software automatically checks monthly for new updates. Manual checks can also be done under the “Help menu”.

REQUIREMENTS

Duolink ImageTool can be installed and used on computers with the following 32-bit or 64-bit operating systems: Windows XP, Windows Vista or Windows 7.

Image Acquisition

The PLA signal is recognized as a spot; an individual signal is of sub-micrometer size. The result from a Duolink experiment is typically a number of discrete PLA signals in various locations of the studied cell- or tissue samples.

If images are acquired in a single focal plane, several signals can be either above or below the current focus. To detect all PLA signals it is thus necessary to acquire images at several focal planes through the thickness of the sample. However, you may acquire images with a single focal plane as long as all images to be compared are acquired with similar focus within the sample.

If the primary antibodies are not properly titrated, the density of signals may be so high that the signals merge. Duolink ImageTool can not quantify regions of merged signals; only separable signals can be counted. For images taken with fluorescence microscopy, a quality control function displays a warning if signals are merged.

If nuclei are densely packed or tissue sections are thick, single cell measurements may be inaccurate. Cell detection is easily verified by visual inspection of the cell outlines.

Start up – Software Installation

1. Plug in the USB flash drive. It works as a security key and must be plugged in to run the software in full mode. Start the Setup file and install the software.

Duolink ImageTool uses a project file structure. Create a new project for each new group of images you want to analyze. Imported images will be stored in a project database in the selected folder. Ensure you have sufficient storage capacity on the hard- or flash drive. If your storage capacity is limited, we recommend removing images or the entire database after analysis.

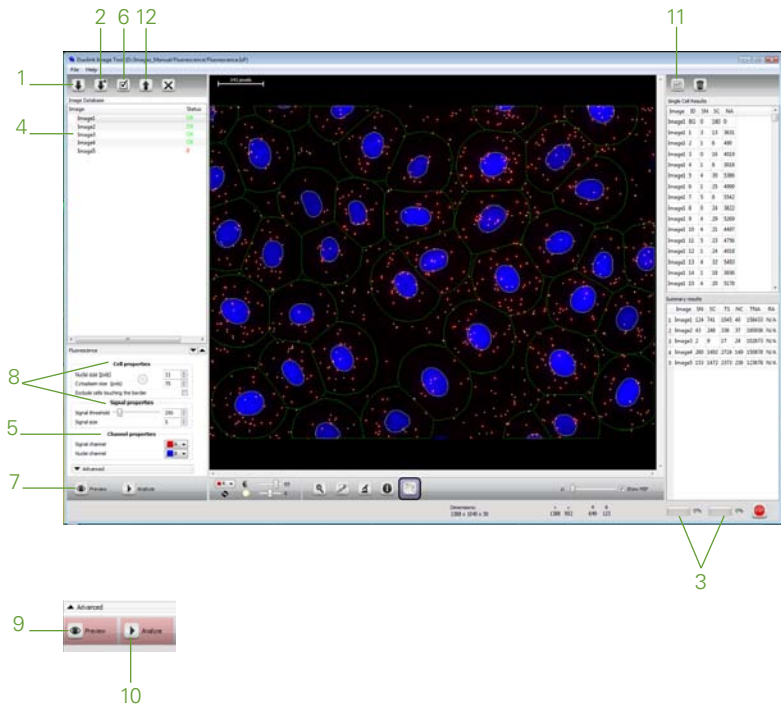
2. Create a new project. Choose “Fluorescence” or “Brightfield.”
3. Follow the further instructions on Fluorescence analysis on page 8 and Brightfield analysis on page 12.

Fluorescence Analysis

- A. Start by importing the images to be analyzed. Import the original microscope file formats if available; .zvi (Zeiss), .lif (Leica), .oif (Olympus), or .ics (Nikon) (1). Merged .tiff and .jpg color images, containing both the signal and nuclei channel, are also imported with this function. Image data where different channels and z-slices are stored in separate tiff-files can be imported with the Special TIFF import (2).

Follow the import progress on the progress bars (3).

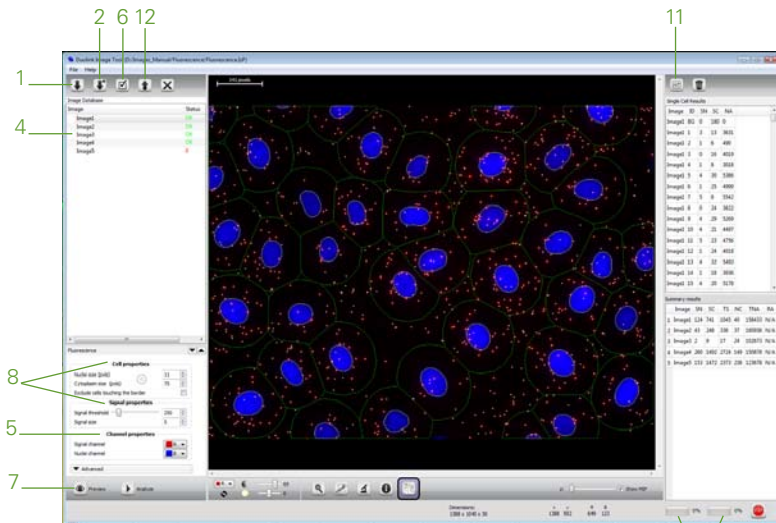
- B. A project database is created and all images imported to the database are listed (4).
- C. Change the channel properties for the signal- and nuclei channels if they are not correctly defined (5).
- D. Check image quality (6). This function checks for merged signals. Images containing merged signal regions will be marked by an "X". These images should be visually verified for analytical quality. Duolink ImageTool can not correctly quantify regions of merged signals, only separable signals are quantified. Images marked with "OK" do not contain merged signals.
- E. Select one of the images in the database and push the Preview button (7).



- F. Now start optimizing the Cell- and Signal properties (8) to quantify the number of PLA signals and nuclei in your selected image. There are a number of tools and functions to help you. The complete list of functions can be found in the Help file under the Help menu.
- G. Each time a setting is changed that is not automatically visualized on the computer screen the Preview- and Analyze buttons will be highlighted in pink. Push Preview (9) to refresh and get a new correct preview of the result overlay.
- H. PLA signals marked with white circles and nuclei outlined in yellow are quantified at analysis. The green outlines represent the user defined cytoplasm size. When the outlines and white circles correspond well to the content of the original microscope image, push Analyze (10). All images in the project database will be analyzed with the selected settings.
Follow the progress of the analysis on the progress bars (3).
- I. Click the Export result button to export the analyzed data into text files that can be opened and further analyzed with Excel (11).

The number of detected PLA signals and nuclei is exported into two text files. The Single_cell_results file contains the total number of signals per cell, and the Summary_of_results file contains the total number of signals and nuclei for each analyzed image.

Images can be exported with split color channels or as RGB images. Furthermore, the results overlay can be added to the exported images (12).

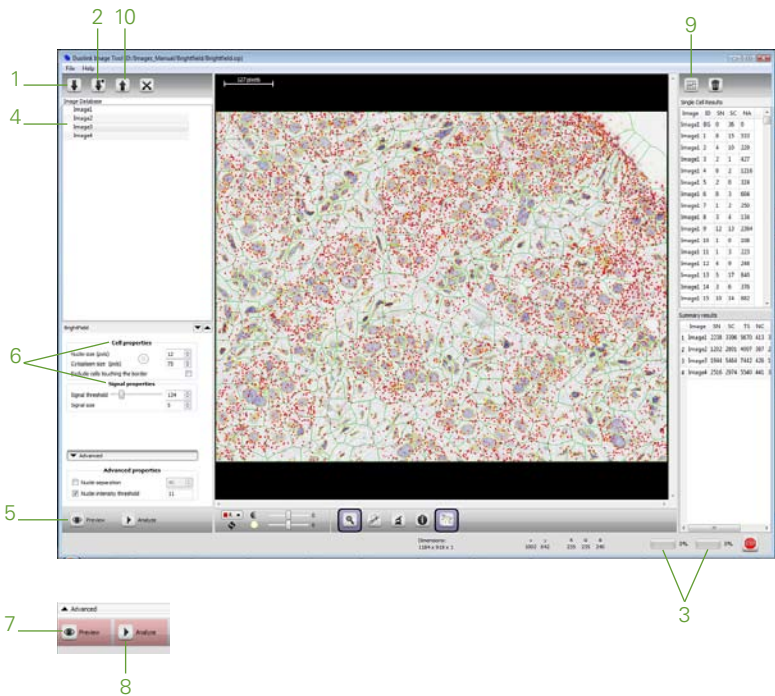


Brightfield Analysis

- A. Start by importing the images to be analyzed (1). Import the original microscope file formats if available; .zvi (Zeiss), .lif (Leica), .oif (Olympus), or .ics(Nikon). Merged .tiff and .jpg color images, containing both the signal and nuclei channel, are also imported with this function. Image data where different channels and z-slices are stored in separate tiff-files can be imported with the Special TIFF import (2).

Follow the import progress on the progress bars (3).

- B. A project database is created and all images imported to the database are listed (4).
- C. Select one of the images in the database and push the Preview button (5).
- D. Now start optimizing the Cell- and Signal properties (6) to quantify the number of PLA signals and nuclei in your selected image. There are a number of tools and functions to help you. The complete list of functions can be found in the Help file under the Help menu.
- E. Each time a setting is changed that is not automatically visualized on the computer screen the Preview- and Analyze buttons will be highlighted in pink. Push Preview (7) to refresh and get a new correct preview of the result overlay.



- F. PLA signals marked with red circles and nuclei outlined in yellow are quantified at analysis. The green outlines represent the user defined cytoplasm size. When the outlines and red circles correspond well to the content of the original microscope image, push Analyze (8). All images in the project database will be analyzed with the selected settings.

Follow the progress of the analysis on the progress bars (3).

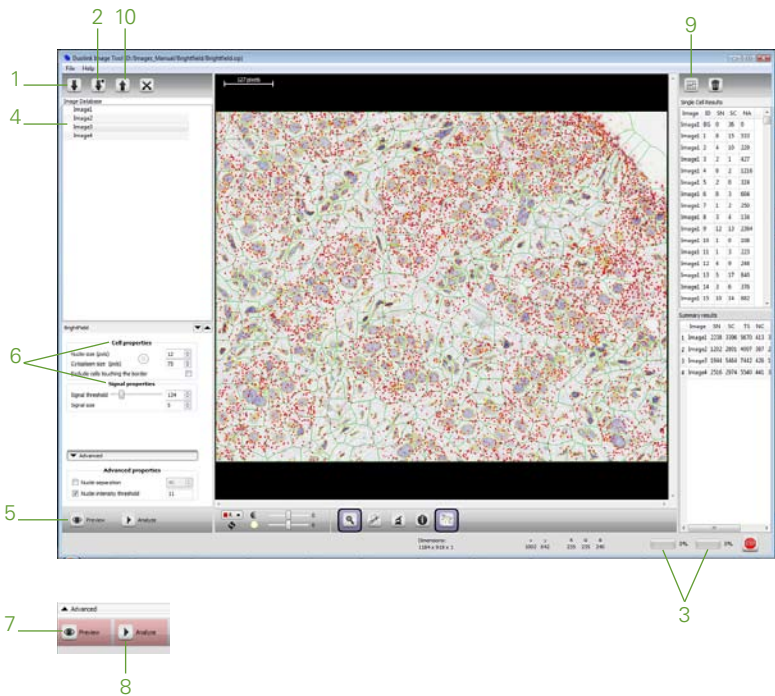
The result overlay will be available for all the images after analysis. Verify the results by comparing the result overlay with the microscope images.

- G. Click the Export result button to export the analyzed data into text files that can be opened and further analyzed with Excel (9).

The number of detected PLA signals and nuclei is exported into two text files. The `Single_cell_results` file contains the total number of signals per cell, and the `Summary_of_results` file contains the total number of signals and nuclei for each analyzed image.

Images can be exported with split color channels or as RGB images.

Furthermore, the results overlay can be added to the exported images (10).



For Technical Support, please contact us at:
support@olink.com

Duolink® ImageTool is developed by Izolde Image Intelligence.

This product is for research use only. Not for use in human diagnostic or therapeutic procedures.

This product includes a licence for non-commercial use of the Duolink product. Commercial users will require additional licenses. Please contact Olink AB for details.

There are no warranties, expressed or implied, which extend beyond this description. Olink AB is not liable for property damage, personal injury, or economic loss caused by this product.

© 2012 Olink AB. Duolink, Olink, PLA and Proseek are trademarks of Olink AB.

All third party trademarks are the property of their respective owners.

OLINK
B I O S C I E N C E

Olink Bioscience
Dag Hammarskjölds väg 52 B
SE-752 37 Uppsala, SWEDEN
www.olink.com