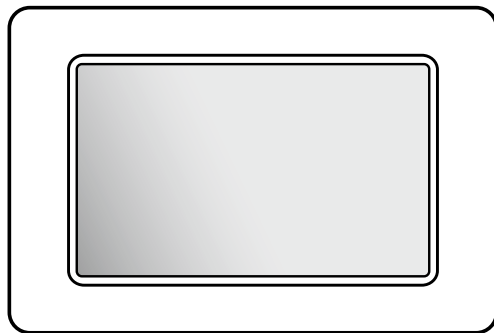




LOGIK

7" Digital Photo Frame with Interchangeable Frames

PF-A720C/PF-A720CE



User Manual

Thank you for purchasing this Digital Photo Frame. You can play your favorite JPEG files directly from a memory card or a USB thumb drive without a computer. With additional interchangeable frame you can quickly change the frame to fit your mood or match your room. Read the following instructions for more details.





Safety Warnings

GB

Some DOs and DON'Ts on the safe use of equipment

This equipment has been designed and manufactured to meet international safety standards but, like any electrical equipment, care must be taken if you are to obtain the best results and safety is to be assured.

- DO** read the operating instructions before you attempt to use the equipment.
- DO** ensure that all electrical connections (including the mains plug, extension leads and interconnections between the pieces of equipment) are properly made and in accordance with the manufacturer's instructions. Switch off and withdraw the mains plug before making or changing connections.
- DO** consult your dealer if you are ever in doubt about the installation, operation or safety of your equipment.
- DO** be careful with glass panels or doors on equipment.
- DO** route the mains lead so that it is not likely to be walked on, crushed, chafed, or subjected to excessive wear and tear or heat.

- DON'T** remove any fixed cover as this may expose dangerous voltages.
- DON'T** obstruct the ventilation openings of the equipment with items such as newspapers, tablecloths, curtains, etc. Overheating will cause damage and shorten the life of the equipment.
- DON'T** allow electrical equipment to be exposed to dripping or splashing, or objects filled with liquids, such as vases, to be placed on the equipment.
- DON'T** place hot objects or naked flame sources such as lighted candles or nightlights on, or close to equipment. High temperatures can melt plastic and lead to fires.
- DON'T** use makeshift stands and NEVER fix legs with wood screws - to ensure complete safety always fit the manufacturer's approved stand or legs with the fixings provided according to the instructions.
- DON'T** use equipment such as personal stereos or radios so that you are distracted from the requirements of traffic safety. It is illegal to watch television whilst driving.
- DON'T** listen to headphones at high volume, as such use can permanently damage your hearing.
- DON'T** leave equipment switched on when it is unattended unless it is specifically stated that it is designed for unattended operation or has a stand-by mode. Switch off using the switch on the equipment and make sure that your family know how to do this. Special arrangements may need to be made for infirm or handicapped people.
- DON'T** continue to operate the equipment if you are in any doubt about it working normally, or if it is damaged in any way - switch off, withdraw the mains plug and consult your dealer.

ABOVE ALL

- **NEVER let anyone especially children push anything into holes, slots or any other opening in the case - this could result in a fatal electrical shock;**
- **NEVER guess or take chances with electrical equipment of any kind**
- **it is better to be safe than sorry!**





Table of contents

Safety Warnings	2
Safety Information	4
Package Content	4
Product Overview	5
Preparations	6
- Attaching the stand	6
- Connecting to the power	6
Changing the Frame	6
Inserting a Memory Card or USB drive	7
Switching the Power on	7
Viewing Photos and Slide Shows	8
-Thumbnail Mode	8
-Rotation	8
Setup Menu	9
Specifications	10
Troubleshooting	11

GB



Safety Information

- Keep away from water or moisture and dusty areas.
- Ambient Temperature is 0~40°C. Never store in hot and very cold areas.
- Be carefully to keep it without dropping it or strong impact.
- Do not try to open the case alone without technical support.
- Connect the AC adapter to the DC IN jack and to power outlet.
- Only use attachments/accessories specified by the manufacturer.
- When left unused for a long period of time, the unit should be unplugged from the household AC outlet.

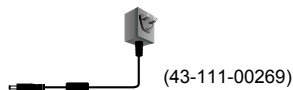
Warning: To reduce the risk of fire or electric shock, do not expose to rain, moisture, dripping or splashing.

Package Content

1. Digital Photo Frame

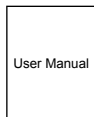


2. Power Adapter



Note: 2-pin adapter for EU market;
3-pin adapter for UK market.

3. User manual



(82-270-00180)

4. Quick Start Guide



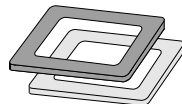
(82-270-00160)

5. Stand



(60-270-C1101)

6. Additional changeable frame x 2

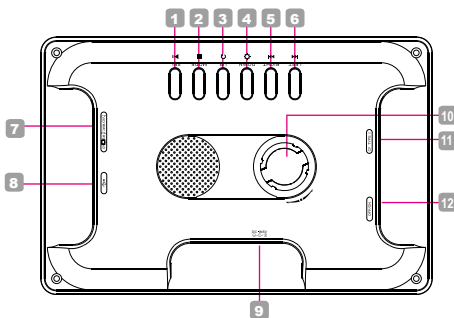


(Silver: 60-270-C0703

Pink: 60-270-C0702)

Product Overview

GB

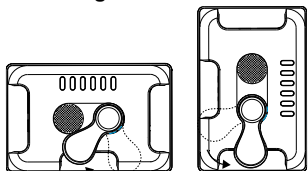


Name	Description
1 ▶ (Play/Pause)/SEL. button	<ul style="list-style-type: none">• To start/pause the sildeshow.• To confirm a setting or function.
2 ■ (Stop)/MODE button	<ul style="list-style-type: none">• To stop playback of slideshow.• To return to the main menu.
3 UP/🔄 (Rotate) button	<ul style="list-style-type: none">• To move up in the menu.• To rotate the photo by 90° clockwise.
4 DOWN/⚙️ (Brightness) button	<ul style="list-style-type: none">• To move down in the menu.• To adjust the value of brightness.
5 RIGHT/▶▶ (Next) button	<ul style="list-style-type: none">• To move right in the menu.• To display the next photo.
6 LEFT/◀◀ (Previous) button	<ul style="list-style-type: none">• To move left in the menu.• To display the previous photo.
7 SD/MMC/MS/xD Slot	To accommodate SD, MMC, MS and xD cards.
8 USB Port	To accommodate the USB devices such as a portable USB flash drive or a flash memory card reader.
9 DC IN Jack	To connect to power supply.
10 Stand receptacle	To attach to the supplied stand.
11 CF Type I Slot	To accommodate CF Type I cards.
12 Power ON/OFF switch	To turn the unit power on and off.

Preparations

GB

Attaching the stand



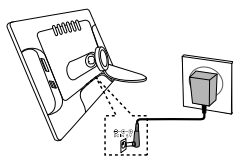
Landscape viewing

Portrait viewing

1. Insert the round end of the stand into the receptacle.
2. Slide the stand to the direction as shown until it is locked tightly in position.

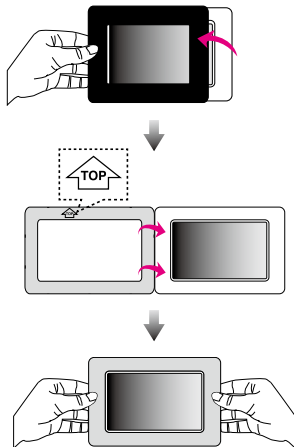
Note: The photo frame can be placed vertically or horizontally for both landscape and portrait display.

Connecting to the power




1. Connect the supplied AC power adaptor (5V, 1.5A) to the DC in jack and then plug the other end to the wall outlet.

Changing the Frame



1. Pull up the frame along its edge from the unit using your fingers.

Note: Make sure all the clips around the frame are entirely unlocked before pulling away from the unit.

2. Hold the other supplied frame with the Arrow () marking pointing upright, and then place it on the unit in an upright position.

3. Press the frame around the edge until it sits in place. Now the frame is changed successfully.



Inserting a Memory Card or USB drive

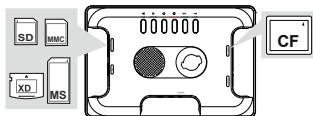
- This frame can only play JPEG format. If playing other formats, please convert the images to readable format for this unit in your computer.

GB

Warning:

Do not attempt to connect MSD/MMC/MS/xD Slot and CF Type I Slot at the same time, or it will cause the main unit work improperly. If it happens, please remove one card and restart the power on the unit.

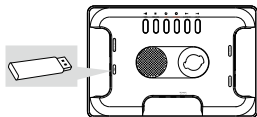
Inserting Memory Card



- Insert your memory card to the appropriate slot according to the orientation marked on the unit.

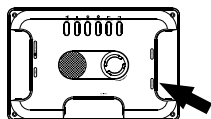
Note: To remove MMC/SD/MS/xD card or CF card, pull the card straight out.

Inserting USB drive



- Insert a USB drive to the USB port.
Note: This device can only display one storage media's contents at a time. If there are more than one storage media is used, the USB drive will be displayed first, then the memory card; when you want to display the files in the memory card, please remove the USB drive first.

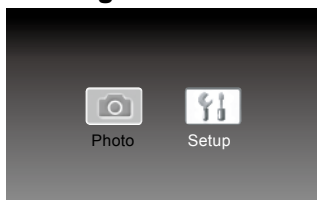
Switching the Power on



- Switch the power to the "ON" marking position to turn on the unit after inserting a memory card/USB drive.

Viewing Photos and Slide Shows

GB



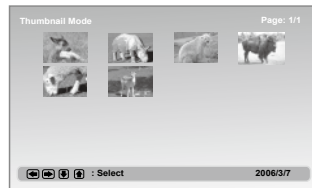
• Displaying pictures bigger than 480 x 234 will take longer time for loading.

1. Press **LEFT/RIGHT** button to select "Photo" from the main menu, then press **SEL.** button.
2. The slideshow starts to play.

Note 1 : To pause the slideshows, press **▶||** button.

Note 2: When the unit does not operate in a while at the main menu, the screen saver will be activated immediately. Press any buttons to return to the main menu again.

Thumbnail Mode



1. Press **MODE** button during the slideshow to enter the thumbnail mode.

2. Press **LEFT/RIGHT/UP/DOWN** button to select the photo you wish to play, then press **▶||** button.

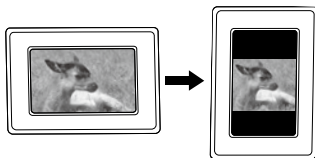
Note: If the thumbnail has more than one page, press **▶▶** button repeatedly to turn to next page. Press **◀◀** button repeatedly to return to the upper page.

3. The slide show starts to play with the photo selected.

Note 1 : Refer to the Setup Menu section on Page 9 to set up the slideshow settings.

Note 2: Press **MODE** button again to return to the main menu.

Rotation

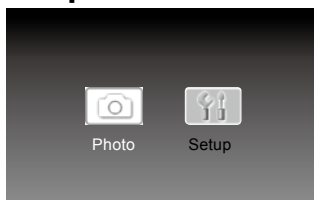


1. Press **LEFT/RIGHT** button to select the photo you wish to rotate, then press **⌚** button of the unit to rotate by 90 in clockwise direction.

Note 1 : Each press of the **⌚** button will rotate the photo by 90 degree in clockwise direction.

Note 2: All the rotate effects will be cancelled when returning to the main menu.

Setup Menu



1. Press **MODE** button to enter the Setup Menu.
2. Press **LEFT/RIGHT** button to select **(f)** "Setup" from the main menu, then press **SEL.** button.
3. Press **UP/DOWN** to select an item in OSD menu, and then press **RIGHT/UP/DOWN** to select an item from the sub-menu, as shown on the below table.
4. Press **SEL.** to confirm.

GB

Note: To leave the Setup Menu, press **MODE** button again.

OSD menus	Sub-menus	Description of operations
Interval Time	5 Sec., 15 Sec., 30 Sec., 1 Min., 5 Min., 30 Min., 1 Hour, 4 Hours, 12 Hours, 1 Day	Set up the interval time for slideshow.
Transition	No Effect, Random, Cover Up, Cover Down, Uncover Left, Push Right, Wipe Up, Wipe Down	Set up the style of transition.
Contrast	-4, -3, -2, -1, 0, +1, +2, +3, +4	Adjust the value of contrast.
OSD Language	English, French, German, Italian, Spanish, Portuguese, Dutch, Polish	Set up the language in which the OSD menu is shown on your screen.
Panel	Original	Select "Original" for playing a conventional aspect ratio of images. Black bands appear on left and right screen with a landscape viewing, or top and bottom with a portrait viewing.
	Full Screen	Select "Full Screen" to play the photos in a full screen size. (If the non 16:9 images is displayed, it will cause the image distortion when selecting the "Full Screen".)
Reset	Confirm	Select Reset to restore to the default settings.
Exit Setup Mode		Select to exit the setup menu.

Specifications

GB

Display	7" Color TFT LCD Panel
View Area	480 X 234 pixels, 16:9 ratio
Button (6)	Left, Right, Down / Brightness, Up / Rotate, Stop, Play/ Pause/Select
Brightness	130
Contrast	150:1
Changeble Frame	Yes
Stand Design	Detachable (for Portrait and Landscape)
Memory Card Slot	SD/ SDHC/ MMC/ MS/ MS Pro/ xD/ CF type I
File Format	JPEG
Power Adapter	5V / 1.5A
OSD Language	English, French, German, Italian, Spanish, Portuguese, Dutch, Polish
Dimensions	200 x 132.8 x 83.7 mm (with stand)
Weight	340g
Accessories	Power Adapter
	Stand
	User Manual
	Quick Start Guide
	Additional changeable frames (silver/ pink)



Troubleshooting

No power

- Check to make sure the power plug is plugged into the power outlet.
- Make sure there is power to the outlet.

GB

Unable to view photos on the Digital Photo Frame

- Not all JPEG files are compatible. Please open the files in the computer and resave them as JPEG files and try to playback in the device.
- Check if using compatible memory cards.

If the picture display is distorted or cannot display properly

- Go to the setup menu, then the panel setting and change the aspect ratio to match your photo: Original or Full Screen.

If picture display seems slow

- Use lower resolution picture.





Visit Partmaster.co.uk today for the easiest way to buy electrical spares and accessories.

With over 1 million spares and accessories available we can deliver direct to your door the very next day. Visit www.partmaster.co.uk or call

0870 6001 338

(UK customers only)

Calls charged at National Rate.

Note: If you require a replacement for any of the items listed below, please quote their corresponding part numbers:

User Manual	82-270-00180
Quick Start Guide	82-270-00160
Power Adapter	43-111-00269
Stand	60-270-C1101
Additional changeable frames (Silver / Pink)	Silver: 60-270-C0703
	Pink: 60-270-C0702

This symbol on the product or in the instructions means that your electrical and electronic equipment should be disposed at the end of its life separately from your household waste. There are separate collection systems for recycling in the EU. For more information, please contact the local authority or your retailer where you purchased the product.

