

Register your product and get support at

[www.philips.com/welcome](http://www.philips.com/welcome)

Downloaded from [www.vandenborre.be](http://www.vandenborre.be)

DCW8010



# User manual

**PHILIPS**

# Contents

<b>1 Important</b>	<b>4</b>
Safety	4
Notice	5
<b>2 Your wireless music system with AirPlay</b>	<b>8</b>
Introduction	8
What's in the box	8
What else you need	9
Overview of the main unit	10
Overview of the remote control	12
<b>3 Before use</b>	<b>14</b>
Connect the FM antenna	14
Connect power	14
Install/replace the remote control batteries	14
<b>4 Get started</b>	<b>16</b>
Turn on	16
Switch modes	16
Set the clock	16
<b>5 Connect to your home Wi-Fi network</b>	<b>17</b>
Method 1: Use iOS 5 Wi-Fi network login sharing	17
Method 2: Connect to a WPS router	18
Method 3: Connect to a non-WPS router	19
<b>6 Stream audio by AirPlay</b>	<b>25</b>
Stream audio from your iTunes music library	25
Control play	27
Use advanced sound settings	27
<b>7 Use the dock</b>	<b>28</b>
Compatible iPod/iPhone/iPad models	28
Enjoy audio through the dock	28
Charge your iPod/iPhone/iPad	29
Undock your iPod/iPhone	29

<b>8 Listen to FM radio</b>	<b>30</b>
Tune to an FM radio station	30
Program radio stations automatically	30
Program radio stations manually	30
Tune to a preset radio station	30
Display RDS information	31
<b>9 Play</b>	<b>32</b>
Play a disc	32
Play from a USB storage device	32
Control play	33
<b>10 Other features</b>	<b>34</b>
Set alarm timer	34
Set sleep timer	34
Listen to an external audio device	34
Listen through headphone	35
<b>11 Adjust sound</b>	<b>36</b>
Adjust volume level	36
Mute sound	36
Adjust default sound settings	36
<b>12 Adjust system settings</b>	<b>37</b>
<b>13 Update firmware</b>	<b>38</b>
Download the update file	38
Update the firmware from the configuration page	38
<b>14 Product information</b>	<b>40</b>
Specifications	40
USB playability information	41
Supported MP3 disc formats	41
RDS program types	41
<b>15 Troubleshooting</b>	<b>42</b>

# 1 Important

## Safety

Information for Europe:  
Know these safety symbols



The 'exclamation mark' calls attention to features for which you should carefully read the supplied literature to prevent operating and maintenance problems.

The 'lightening bolt' symbol indicates uninsulated components within the product that can cause an electric shock.

To reduce the risk of fire or electric shock, do not expose the product to rain or moisture and do not place any objects filled with liquids, such as vases, on the product.

- ① Read these instructions.
- ② Keep these instructions.
- ③ Heed all warnings.
- ④ Follow all instructions.
- ⑤ Do not use this product near water.
- ⑥ Clean only with dry cloth.
- ⑦ Do not block any ventilation openings. Install in accordance with the manufacturer's instructions.
- ⑧ Do not remove the casing of this product.

- ⑨ Only use this product indoors. Do not expose the product to dripping / splashing water, rain or high humidity.
- ⑩ Keep this product away from direct sunlight, naked flames or heat.
- ⑪ Do not install near any heat sources such as radiators, heat registers, stoves, or other electrical equipment (including amplifiers).
- ⑫ Do not place any other electrical equipment on the product.
- ⑬ Do not place any sources of danger on the product (e.g. objects containing liquids, burning candles).
- ⑭ This product may include batteries. Please refer to safety and disposal instructions for batteries in this user manual.
- ⑮ Where the mains plug or an appliance coupler is used as the disconnect device, the disconnect device shall remain readily operable.



### Warning

- Never remove the casing of this apparatus.
- Never lubricate any part of this apparatus.
- Never place this apparatus on other electrical equipment.
- Keep this apparatus away from direct sunlight, naked flames or heat.
- Ensure that you always have easy access to the power cord, plug or adaptor to disconnect this apparatus from the power.

Risk of overheating! Never install this apparatus in a confined space. Always leave a space of at least four inches around this apparatus for ventilation. Ensure curtains or other objects never cover the ventilation slots on this apparatus.



## Class II equipment symbol:



CLASS II apparatus with double insulation, and no protective earth provided.

## Care of the environment



Your product is designed and manufactured with high quality materials and components, which can be recycled and reused.



When this crossed-out wheeled bin symbol is attached to a product it means that the product is covered by the European Directive 2002/96/EC.

Please inform yourself about the local separate collection system for electrical and electronic products.

Please act according to your local rules and do not dispose of your old products with your normal household waste. Correct disposal of your old product helps to prevent potential negative consequences for the environment and human health.



Your product contains batteries covered by the European Directive 2006/66/EC, which cannot be disposed with normal household waste. Please inform yourself about the local rules on separate collection of batteries because correct disposal helps to prevent negative consequences for the environmental and human health.

## Environmental information

All unnecessary packaging has been omitted. We have tried to make the packaging easy to separate into three materials: cardboard (box), polystyrene foam (buffer) and polyethylene (bags, protective foam sheet.)

Your system consists of materials which can be recycled and reused if disassembled by a specialized company. Please observe the local regulations regarding the disposal of packaging materials, exhausted batteries and old equipment.

## Information about the use of batteries:



### Caution

- Risk of leakage: Only use the specified type of batteries. Do not mix new and used batteries. Do not mix different brands of batteries. Observe correct polarity. Remove batteries from products that are not in use for a longer period of time. Store batteries in a dry place.
- Risk of injury: Wear gloves when handling leaking batteries. Keep batteries out of reach of children and pets.
- Risk of explosion: Do not short circuit batteries. Do not expose batteries to excessive heat. Do not throw batteries into the fire. Do not damage or disassemble batteries. Do not recharge non-rechargeable batteries.
- Risk of swallowing batteries: The product/remote control may contain a coin type battery, which can be swallowed. Keep the battery out of reach of children at all times!

## Trademark notice

Made for



iPod



iPhone



iPad



AirPlay

“Made for iPod,” “Made for iPhone,” and “Made for iPad” mean that an electronic accessory has been designed to connect specifically to iPod, iPhone, or iPad, respectively, and has

been certified by the developer to meet Apple performance standards. Apple is not responsible for the operation of this device or its compliance with safety and regulatory standards. Please note that the use of this accessory with iPod, iPhone, or iPad may affect wireless performance.

AirPlay, iPod, and iPhone are trademarks of Apple Inc., registered in the U.S. and other countries. iPad is a trademark of Apple Inc.



The Wi-Fi CERTIFIED Logo is a certification mark of the Wi-Fi Alliance.

---

## Copyright



The making of unauthorized copies of copy-protected material, including computer programs, files, broadcasts and sound recordings, may be an infringement of copyrights and constitute a criminal offence. This equipment should not be used for such purposes.

2012 © Koninklijke Philips Electronics N.V. Specifications are subject to change without notice. Trademarks are the property of Koninklijke Philips Electronics N.V or their respective owners. Philips reserves the right to change products at any time without being obliged to adjust earlier supplies accordingly.

### Note

- The type plate is located on the back of the system.

## 2 Your wireless music system with AirPlay

Congratulations on your purchase, and welcome to Philips! To fully benefit from the support that Philips offers, register your product at [www.philips.com/welcome](http://www.philips.com/welcome).

If you contact Philips, you will be asked for the model and serial number of this product. The model number and serial number are on the back of the main unit. Write the numbers here:

Model No. \_\_\_\_\_

Serial No. \_\_\_\_\_

---

### Introduction

#### With this system, you can:

- enjoy audio from discs, USB storage devices, iPod/iPhone/iPad, and other external devices,
- listen to FM radio stations,
- charge your iPod/iPhone/iPad directly,
- stream audio from an iTunes music library that is hosted on a Mac, PC, iPhone, iPod touch, or iPad by AirPlay.

#### You can enrich sound output with these sound effects:

- Digital sound control (DSC)
- Dynamic bass boost (DBB)
- Full sound control

#### Playable media:

- Discs
  - Audio CD, CD-R, CD-RW, MP3-CD, WMA-CD
- USB storage device
  - Compatibility: USB 1.1, USB2.0
  - Class support: MSC (Mass Storage Class)
  - File system: FAT12, FAT16, FAT32
  - Files: .mp3, .wma

- Maximum number of albums/folders: 99
- Maximum number of tracks/files: 999
- Maximum level of directory: 8
- iPod, iPhone, and iPad models
  - iPad 2 and iPad
  - iPhone 4S, iPhone 4, iPhone 3GS and iPhone 3G
  - iPod touch (1st, 2nd, 3rd, and 4th generations)
  - iPod nano (2nd, 3rd, 4th, 5th, and 6th generations)

#### Compatible iTunes host devices for AirPlay:

- A Wi-Fi enabled PC/Mac with iTunes 10 or later installed on, and
- the following iPod/iPhone/iPad models with iOS 4.3 or later
  - iPad 2 and iPad
  - iPhone 4S, iPhone 4, iPhone 3GS, and iPhone 3G
  - iPod touch (1st, 2nd, 3rd, and 4th generations)

---

### What's in the box

Check and identify the contents of your package:

- Main unit
- Remote control and two AAA batteries
- FM antenna
- Wi-Fi antenna
- AC power adaptor
- Plug converter for AC power adaptor X 2
- CD-ROM (for user manual)
- Quick start guide

---

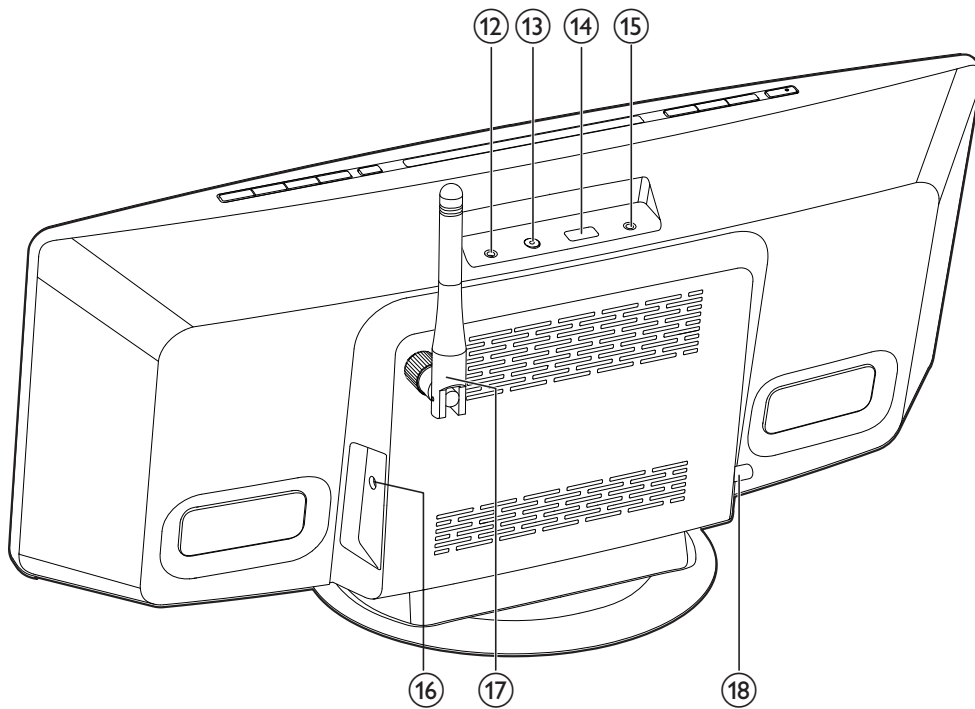
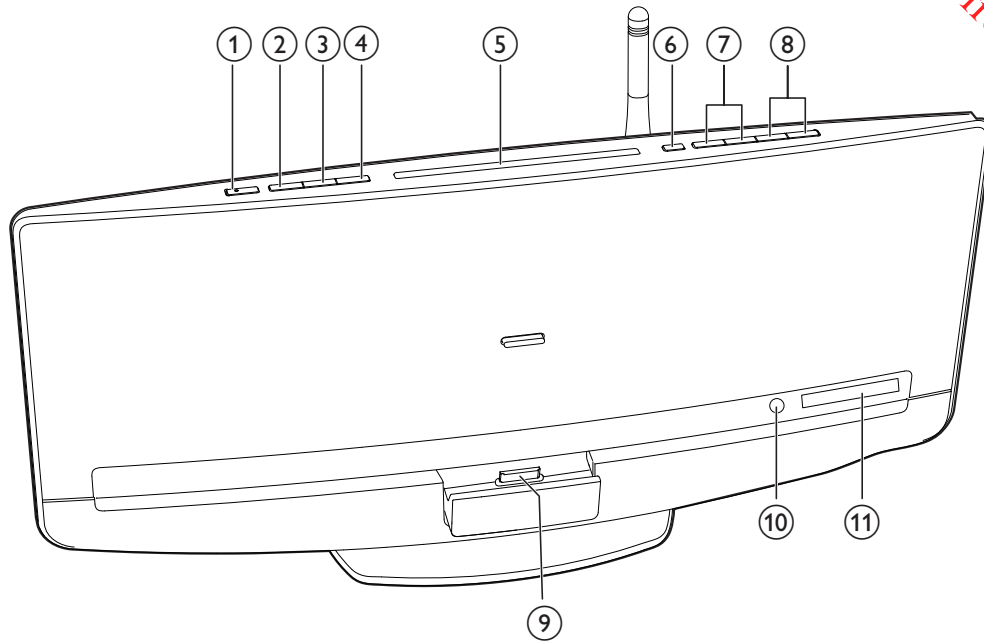
## What else you need






To stream audio wirelessly by AirPlay, you need:

- a Wi-Fi certified router; and
- a host for your iTunes music library, for example, an iPod touch/iPhone/iPad with iOS 4.3 (or later) or a Wi-Fi enabled PC/Mac with iTunes 10 (or later) installed on.

Downloaded from [www.vandenborre.be](http://www.vandenborre.be)

## Overview of the main unit



- ① 
- Turn on the system.
  - Switch the system to eco power standby mode or normal standby mode.
- ② **SOURCE**
- Press repeatedly to select a source.
- ③ 
- Start, pause, or resume play.
- ④ 
- Stop the play of music.
  - Access the playlist of a docked iPod/iPhone.
- ⑤ **Disc compartment**
- ⑥ 
- Press to eject the disc from the disc compartment.
- ⑦ 
- Skip to the previous or next track.
  - Press and hold to search within a track.
  - Tune to a radio station.
- ⑧ **VOL+/VOL-**
- Increase or decrease the volume level.
- ⑨ **Dock for iPod/iPhone/iPad**
- Connect to a compatible iPod/iPhone/iPad.
- ⑩ **IR sensor**
- Receive infrared signals from the remote control.
- ⑪ **VFD screen**
- ⑫ **MP3-LINK**
- Connect to the audio output socket (usually the headphone socket) of an external device.
- ⑬ **WIFI SETUP**
- Press to activate the setup of connection to a non-WPS router or an iPod touch/iPhone/iPad with iOS 5.X.
  - Press to activate the setup of connection to a WPS router.

- To change Wi-Fi setup after first-time setup, press and hold WIFI SETUP for more than 3 seconds to reset Wi-Fi settings.

⑭ 

- Connect to a USB storage device.

⑮ 

- Connect to a headphone with 3.5-mm connector.

⑯ **DC IN**

- Connect to the AC power adaptor.

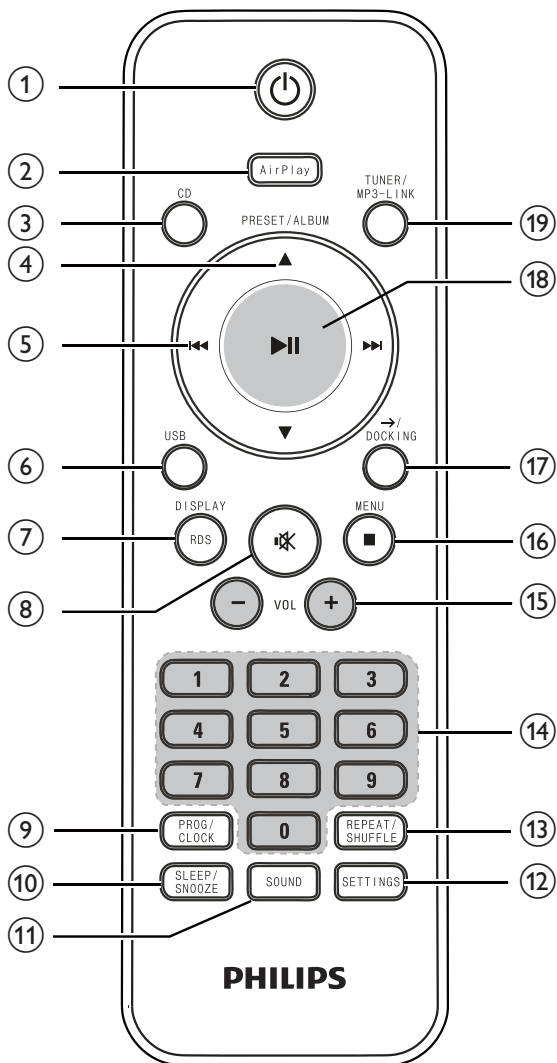
⑰ **Wi-Fi antenna**

- Fix the Wi-Fi antenna to the main unit for better emission and reception of Wi-Fi signals.

⑱ **FM ANT**

- Connect to the FM antenna.

## Overview of the remote control



- ① **Power**
- Turn on the system.
  - Switch the system to eco power standby mode or normal standby mode.
- ② **AirPlay**
- Switch the source to audio input that is streamed from your iTunes library by AirPlay.

- ③ **CD**
- Switch the source to disc.
- ④ **PRESET/ALBUM ▲ / ▼**
- Skip to the previous or next album.
  - Select a preset radio station.
  - Navigate through iPod/iPhone playlist.
- ⑤ **I◀◀ / ▶▶I**
- Skip to the previous or next track.
  - Press and hold to search within a track.
  - Tune to a radio station.
- ⑥ **USB**
- Switch the source to USB storage device.
- ⑦ **RDS/DISPLAY**
- Synchronize the clock with an RDS radio station that transmits time signals.
  - Display the current status or media information.
- ⑧ **Mute**
- Mute or restore volume.
- ⑨ **PROG/CLOCK**
- Program radio stations.
  - Set the clock.
- ⑩ **SLEEP /SNOOZE**
- Set the sleep timer or alarm timer.
- ⑪ **SOUND**
- Access the sound setting for DSC, DBB, and full sound control.
- ⑫ **SETTINGS**
- Access the menu of system settings.
- ⑬ **REPEAT/SHUFFLE**
- Select a play mode.
- ⑭ **Numeric keypad**
- ⑮ **VOL +/-**
- Increase or decrease the volume level.
- ⑯ **■ /MENU**
- Stop the play of music.
  - Access the playlist of iPod/iPhone.

⑪ → / **DOCKING**

- Switch the source to the audio input that is transferred through the dock.

⑫ ►||

- Start, pause, or resume play.

⑬ **TUNER/MP3-LINK**

- Switch the source between FM tuner or the audio input that is transferred through the **MP3-LINK** socket.

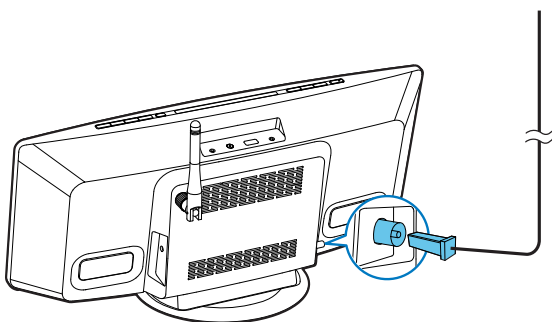
## 3 Before use

### Connect the FM antenna



#### Note

- For optimal reception, fully extend the antenna and adjust its position, or connect an outdoor antenna.
- This product does not support MW (medium wave) radio reception.



Connect the FM antenna to the **FM ANT** socket on the back panel.

### Connect power

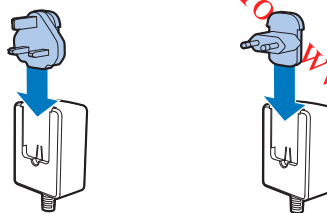


#### Caution

- Risk of product damage! Make sure that the power supply voltage matches the voltage printed on the back of the main unit.
- Risk of electric shock! Before you plug the AC power adaptor, make sure that the adaptor plug converter is fixed securely. When you unplug the AC power adaptor, always pull the plug, never the cord.
- Before you connect the AC power adaptor, make sure that you have completed all the other connections.

1

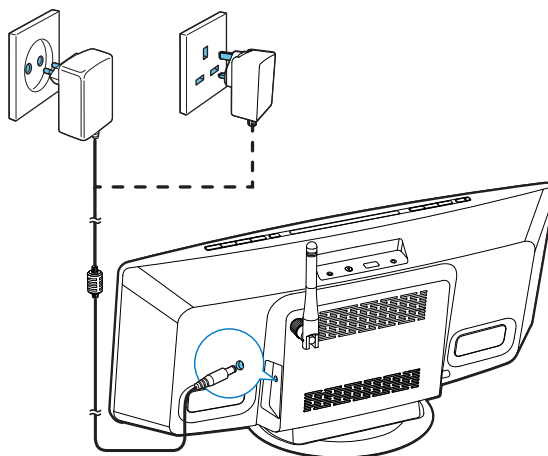
Select a adaptor plug converter and fix it to the adaptor.



2

Connect the AC power adaptor to

- the **DC IN** socket on the back panel, and
- the wall outlet.



### Install/replace the remote control batteries

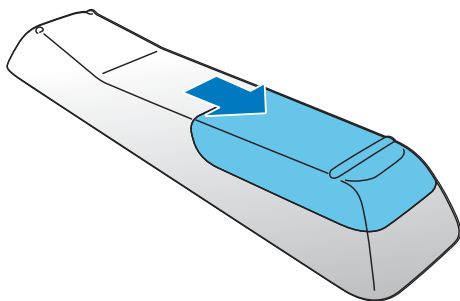


#### Caution

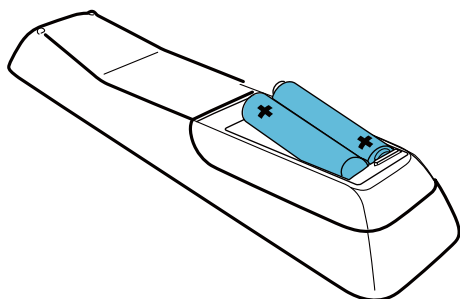
- Risk of explosion! Keep batteries away from heat, sunshine or fire. Never discard batteries in fire.

1

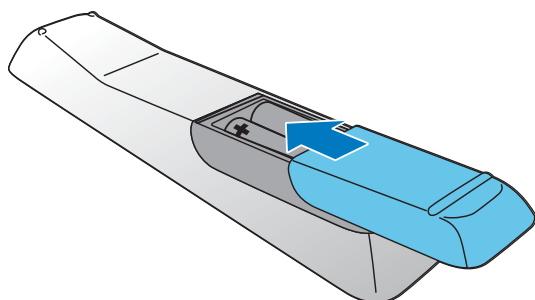
Open the battery compartment.



- 2 Insert 2 AAA batteries with correct polarity (+/-) as indicated.



- 3 Close the battery compartment.



#### Note

- Before you press any function button on the remote control, first select the correct source with the remote control instead of the main unit.
- If you do not use the remote control in a coming long time, remove the batteries.
- For better reception, point the remote control directly at the IR sensor on the front of the main unit.

## 4 Get started



### Caution

- Use of controls or adjustments or performance of procedures other than herein may result in hazardous radiation exposure or other unsafe operation.

## Turn on

After proper power connection, the system switches on automatically.

Wait for successful boot-up of the unit.

- ↳ The boot-up takes up to 35 seconds.
- ↳ During boot-up, the LED indicator in the middle of the **WIFI SETUP** button blinks yellow.
- ↳ After boot-up, if no Wi-Fi connection has been set up for this system, the LED indicator stays solid yellow.

## Switch modes

### Manually switch the modes:

- Press and hold **⏻** to switch this system to eco power standby mode.
- Press **⏻** to switch this system
  - from working mode to normal standby mode, or
  - from eco power standby mode to working mode.

## Set the clock



### Note

- During setting, if no action is made within 90 seconds, the system exits clock setting without saving earlier operations.

- 1 In normal standby mode, press **PROG/CLOCK** to activate the clock setting.  
↳ **24HOUR** (24-hour time format) blinks.
- 2 Press **◀◀/▶▶** to select **24HOUR** or **12HOUR** (12-hour time format), and then press **PROG/CLOCK** to confirm.  
↳ The hour digits blink.  
↳ If you select **12HOUR** as the time format, **PM** or **AM** is displayed.
- 3 Press **◀◀/▶▶** repeatedly to set the hour digits.
  - You can enter the digits with the numeric keypad.
- 4 Press **PROG/CLOCK** to confirm.  
↳ The minute digits blink.
- 5 Press **◀◀/▶▶** repeatedly to set the minute digits.
- 6 Press **PROG/CLOCK** to confirm the clock setting.  
↳ The set clock is displayed.



### Tip

- You can also synchronize the system clock with an RDS radio station that transmits time signals. (Refer to "Listen to FM radio" > "Display RDS information" > "Synchronize clock with RDS")

## 5 Connect to your home Wi-Fi network



To connect this system to your existing home Wi-Fi network, you need to apply your home Wi-Fi settings to it.

Choose your best setup method based on the preconditions listed below.

Precondition	Setup method
You have an iPod touch/iPhone/iPad upgraded to iOS 5.0 or later.	Method 1 (recommended) (see 'Method 1: Use iOS 5 Wi-Fi network login sharing' on page 17)
Your Wi-Fi router is enabled with WPS (Wi-Fi Protected Setup) and supports PBC (Push Button Connection).	Method 2 (see 'Method 2: Connect to a WPS router' on page 18)
You have a Wi-Fi enabled device with an Internet browser, such as an iPod touch/iPhone/iPad or a Wi-Fi enabled PC/Mac.	Method 3 (see 'Method 3: Connect to a non-WPS router' on page 19)

Before you connect this system to your home Wi-Fi network, make sure that:

- your Wi-Fi router is powered on and working properly.
- this system has been powered on and booted up successfully (see 'Turn on' on page 16).

Once connected successfully, this system will remember your home Wi-Fi settings. Whenever this system is powered on, it connects to your home Wi-Fi network automatically, and then you can enjoy music streamed by AirPlay.

### Method 1: Use iOS 5 Wi-Fi network login sharing

- 1 Connect your iPod touch/iPhone/iPad to your home Wi-Fi network.
- 2 Dock your iPod touch/iPhone/iPad to the system (see 'Enjoy audio through the dock' on page 28).
- 3 Press **WIFI SETUP** on the top panel.  
➡ The following dialog box is displayed.



- 4 Tap **ALLOW** (allow) to share your Wi-Fi settings with this system.
- 5 Wait less than 1 minute until the light stops flashing and you hear a confirmation tone.

#### Note

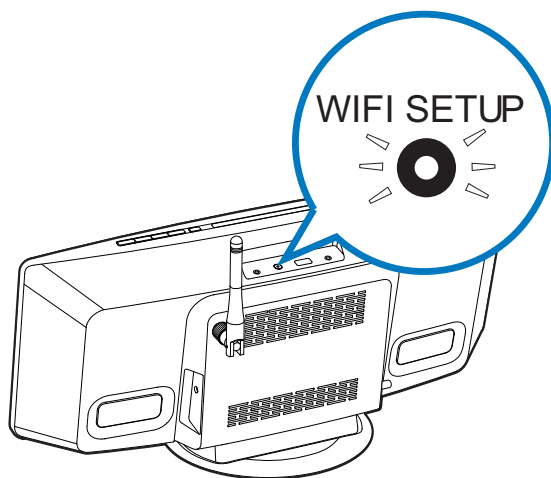
- If the confirmation tone does not beep in 2 minutes, check the IP address of this system (see 'Adjust system settings' on page 37). If the IP address is displayed as "0.0.0.0" or "192.168.1.1", reconnect the power adaptor, and then a confirmation tone beeps after boot-up.

## Method 2: Connect to a WPS router

- 1 Press the **WPS** button on your home Wi-Fi router.



- 2 Shortly after step 1, press **WIFI SETUP** on the top panel.



- The LED indicator in the middle of **WIFI SETUP** button blinks yellow and green alternately.
- Within 2 minutes, the LED indicator stops blinking and stays solid green, and the speaker beeps.
- The system is connected to your home Wi-Fi network successfully.



#### Tip

- For some Wi-Fi routers, you need to hold the **WPS** button for Wi-Fi connection or enable the WPS PBC function from the router configuration pages. See the user manuals of the specific routers for details.
- If the **WIFI SETUP** indicator on DCW8010 stays yellow, it means that the Wi-Fi connection has failed. Please wait for 2 minutes and try again. If the problem remains, try to set up the Wi-Fi connection manually.
- If the Wi-Fi connection fails again, reconnect the power adaptor, and then try again.

## Method 3: Connect to a non-WPS router

To connect this system to a non-WPS Wi-Fi router with a PC/Mac or iOS 4.3 iPod touch/iPhone/iPad, you need to access its built-in configuration web page to change its internal Wi-Fi settings.

Follow the steps below to complete the connection.

- 1 Collect settings of your home Wi-Fi router and write down on paper for use (see 'Collect settings of your home Wi-Fi router' on page 19).
- 2 Switch this system to Assisted Wi-Fi Setup mode (see 'Switch this system to Assisted Wi-Fi Setup mode' on page 20).
  - ↳ A new Wi-Fi network is created by this system, with the network name (SSID) of **Philips DCW8010 XXXXXX**.
- 3 Connect your Wi-Fi enabled device to the created new Wi-Fi network temporarily (see 'Connect your Wi-Fi enabled device to the newly created Wi-Fi network' on page 20).
- 4 Open the built-in web page of this system with the internet browser of your Wi-Fi enabled device (see 'Open the built-in web page of this system' on page 22).

- 5 Change the internal Wi-Fi settings of this system based on the settings that you wrote down on paper at step 1 (see 'Change the internal Wi-Fi settings of this system' on page 23).
- 6 Restore your Wi-Fi enabled device back to your existing home Wi-Fi settings (see 'Restore your Wi-Fi enabled device back to your existing home Wi-Fi setting' on page 24).

## Collect settings of your home Wi-Fi router



#### Note

- Always consult the user manual of your home Wi-Fi router for detailed instructions.

- 1 Connect your Wi-Fi enabled device to your existing home Wi-Fi network.
- 2 Launch the Internet browser (for example, Apple Safari or Microsoft Internet Explorer) on your Wi-Fi enabled device.
- 3 Open the configuration page of your home Wi-Fi router.
- 4 Find the Wi-Fi settings tab and write down the following information on paper:
  - (A) Network name (SSID)
  - (B) Wi-Fi security mode (usually WEP, WPA or WPA2 if enabled)
  - (C) Wi-Fi password (if Wi-Fi security is enabled)
  - (D) DHCP mode (enabled or disabled)
  - (E) Static IP address settings (if DHCP mode is disabled)

## Switch this system to Assisted Wi-Fi Setup mode

### Note

- Before you press any button on the main unit, make sure that the system has been booted up successfully (see 'Turn on' on page 16).

Press **WIFI SETUP** on the top panel.

- ↳ The LED indicator in the middle of **WIFI SETUP** button stays solid yellow.
- ↳ A new Wi-Fi network is created automatically, with the network name (SSID) of **Philips DCW8010 XXXXXX**.
- ↳ It takes up to 45 seconds for successful creation of this new Wi-Fi network.

### Note

- After you finish the manual Wi-Fi setting for this system, this new Wi-Fi network disappears.
- If you fail to enter Assisted Wi-Fi Setup mode, reconnect the power adaptor, and then try again after successful boot-up.
- Make sure that no other Philips AirPlay-enabled devices are in Assisted Wi-Fi Setup mode at the same time. Multiple new Wi-Fi networks created this way may interfere with each other.
- To change Wi-Fi setup after first-time setup, press and hold **WIFI SETUP** for more than 3 seconds to reset Wi-Fi settings. Then follow the previous steps to change your network settings.

## Connect your Wi-Fi enabled device to the newly created Wi-Fi network

The new Wi-Fi network created by this system only allows access of one Wi-Fi enabled device. To avoid interference from any other Wi-Fi device, you are recommended to temporarily disable the Wi-Fi function on your other Wi-Fi devices.

### Option 1: Use your iPod touch/iPhone/iPad

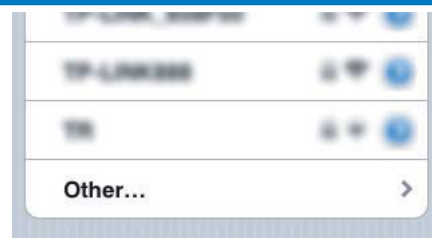
- 1 Select **Settings** -> **Wi-Fi** on your iPod touch/iPhone/iPad.




- 2 Select **Philips DCW8010 XXXXXX** from the list of available networks.



**Philips DCW8010 XXXXXX**



- 3 Wait until successful Wi-Fi connection on your iPod touch/iPhone/iPad.
- ↳  is displayed at the upper left corner of your iPod touch/iPhone/iPad.



Tip

- If **Philips DCW8010 XXXXXX** is not in the list, try to scan the available Wi-Fi networks again.

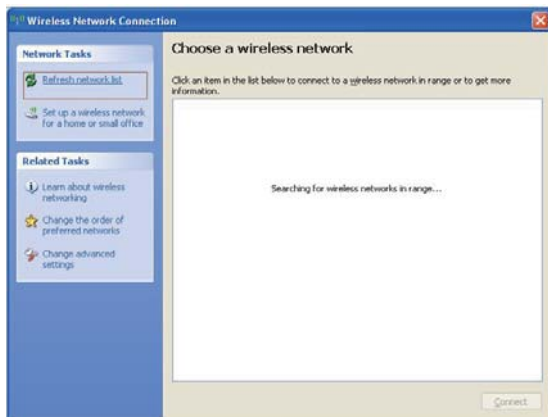
## Option 2: Use your Wi-Fi enabled PC/Mac



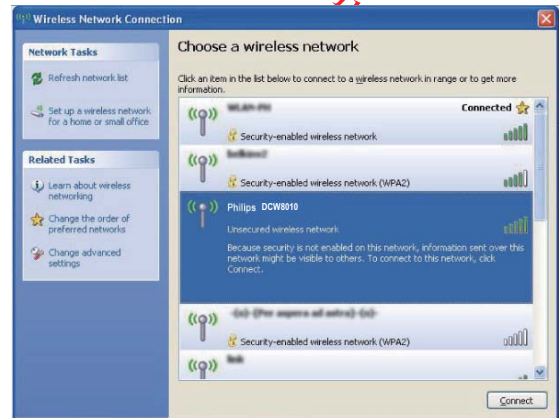
Note

- See the user manual of your PC/Mac for how to connect your PC/Mac to a Wi-Fi network.
- During Wi-Fi network connection, do not connect any network cable to your PC/Mac.

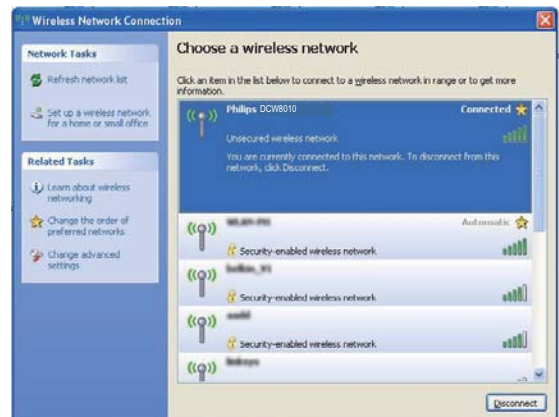
- 1 Open the Wi-Fi setup tool or control panel on your PC/Mac.
- 2 Scan the available Wi-Fi networks.



- 3 Select **Philips DCW8010 XXXXXX** from the list of available networks.



- 4 Wait until successful Wi-Fi connection on your PC/Mac.

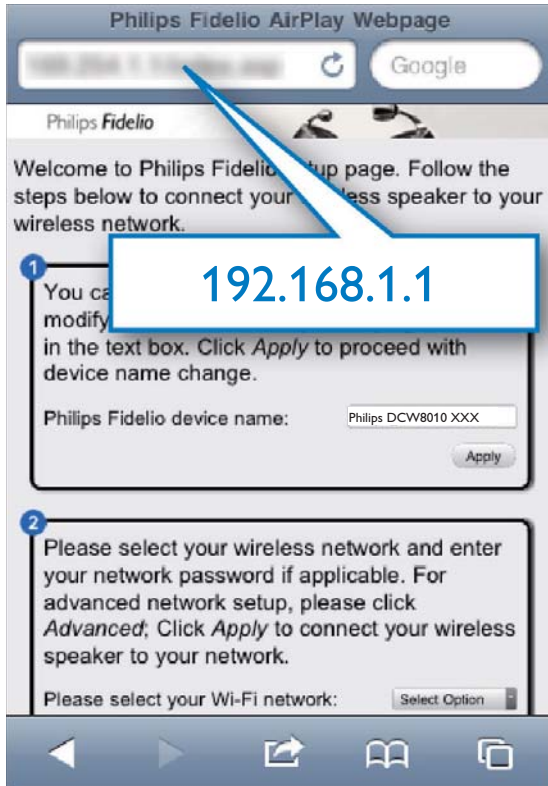


Tip

- If **Philips DCW8010 XXXXXX** is not in the list, try to scan the available Wi-Fi networks again.

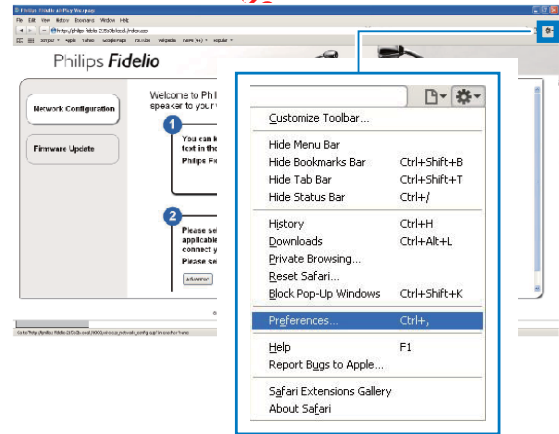
## Open the built-in web page of this system

- 1 Launch Apple **Safari** browser or any other internet browser on your Wi-Fi enabled device.
- 2 Type in **192.168.1.1** at the browser address bar and confirm.
  - ↳ The configuration web page is displayed.

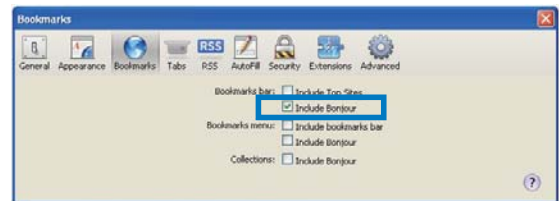


If you use Safari on your Wi-Fi enabled PC/Mac, you can also select 'Philips DCW8010 XXXXXX' from the Bonjour pull-down list to enter the configuration web page directly.

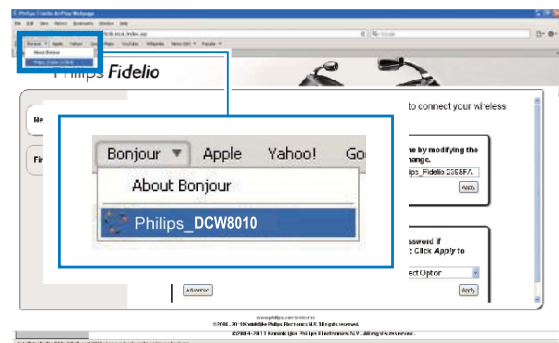
- 1 Click **\* -> Preferences**.
  - ↳ The Bookmarks menu is displayed.



- 2 Tick **Include Bonjour** for Bookmarks bar.



- 3 Select '**Philips DCW8010 XXXXXX**' from the Bonjour pull-down list shown at the bookmarks bar.
  - ↳ The configuration web page is displayed.



## Change the internal Wi-Fi settings of this system

On the configuration web page of this system, you can change the internal Wi-Fi settings for connection of this system to your existing home Wi-Fi network.

### Note

- Make sure that the settings on the configuration web page match your home Wi-Fi network settings that you wrote down on paper:



- Follow the on-screen instructions to change and confirm the internal Wi-Fi settings.
  - ➡ After a while, the indicator in the middle of **WIFI SETUP** button stops blinking and stays solid green, and the main unit beeps.
  - ➡ This system is connected to your existing home Wi-Fi network successfully.

### Note

- If the LED indicator in the middle of **WIFI SETUP** button does not stay solid green, it means that the Wi-Fi connection has failed. Reboot your Wi-Fi router and this system, and then check whether this system is connected to your Wi-Fi network. If the problem remains, try the above procedures again.
- After you finish the above changes or reboot this system, the new Wi-Fi network created by this system disappears.

### Tip

- If you like, you can change the device name of this system in **Advanced settings -> AirPlay Device Name** on its configuration web page. This is helpful for you to distinguish this system from other Philips AirPlay-enabled devices in your house.
- If you want to enter the network name (SSID) manually (for example, if you want to hide your SSID), go to **Advanced settings -> CONFIGURE MANUALLY** on the configuration web page of this system.
- To change Wi-Fi setup after first-time setup, press and hold **WIFI SETUP** for more than 3 seconds to reset the Wi-Fi setting. Then follow the previous steps to change your network settings.

## Restore your Wi-Fi enabled device back to your existing home Wi-Fi setting

### Note

- Make sure that the settings at steps 2 to 3 below match your home Wi-Fi network settings you wrote on paper.

- 1 Select **Settings** -> **Wi-Fi** on your iPod touch/iPhone/iPad.
  - Or open the list of available Wi-Fi networks on your PC/Mac.



- 2 Select your network name (SSID) from the list of available wireless networks.



- 3 Enter the network key if required.
- 4 Wait until successful Wi-Fi connection to your home Wi-Fi network.

## 6 Stream audio by AirPlay

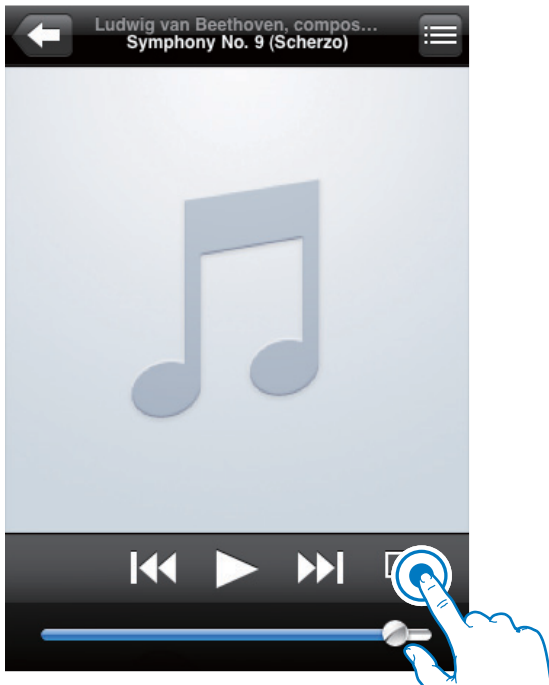
### Stream audio from your iTunes music library

#### Note

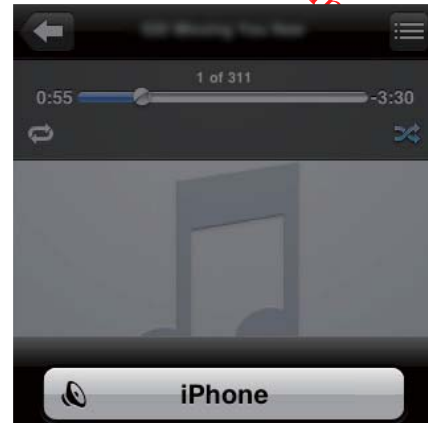
- Make sure that your iTunes host device is connected to the same Wi-Fi network as this system. Your iTunes device can be an iPod touch/iPhone/iPad installed with iOS 4.3 (or later) or a Wi-Fi enabled PC/Mac installed with iTunes 10 (or later).
- For iPhone 4S users: To ensure optimal performance of AirPlay streaming, upgrade your iPhone 4S to iOS 5.1 or later.

### Stream from your iPod touch/iPhone/iPad

- 1 Launch the **iPod/Music** application on your iPod touch/iPhone/iPad.
- 2 Tap on the AirPlay icon.



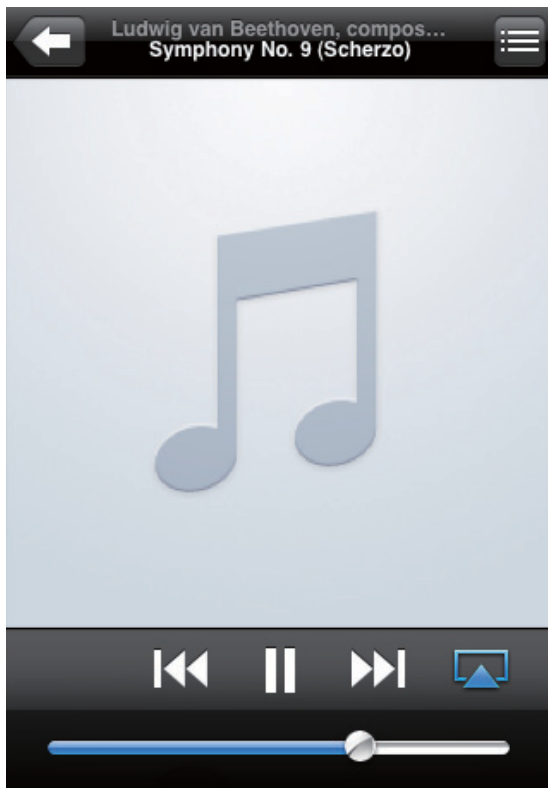
- 3 Select **Philips DCW8010 XXXXXX** (or user customized name) from the AirPlay list.



**Philips DCW8010 XXXXXX**

Cancel

- 4 Select a media file and start play.  
 ↳ After a while, you will hear music from this system.

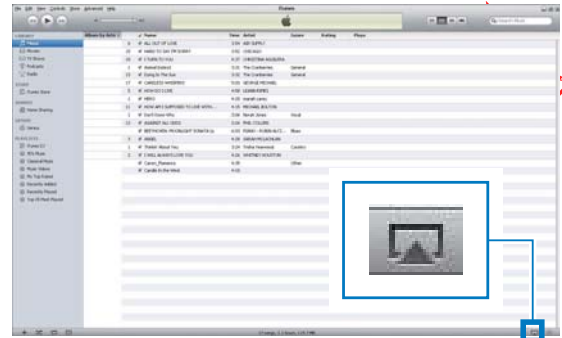


#### Note

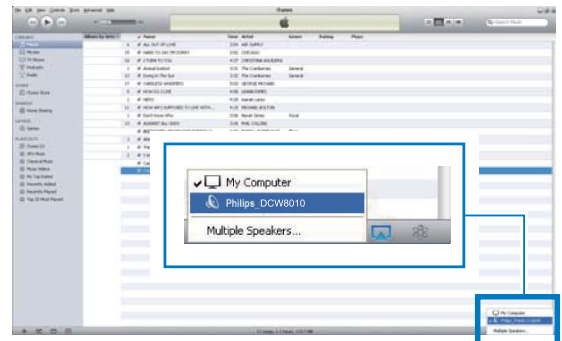
- If you fail to hear music after successful setup, do one of the following on your iPod touch/iPhone/iPad:
- (1) Disconnect and then re-connect to the same Wi-Fi router again;
- (2) Close all applications running at the background;
- (3) Power off and then power on your iPod touch/iPhone/iPad again.

## Stream from your PC/Mac

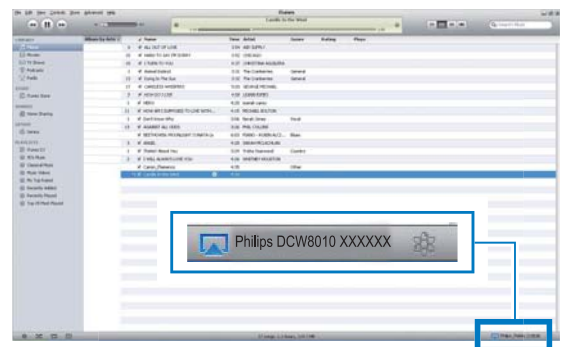
- 1 Launch iTunes 10 (or a later version) on your PC/Mac.
- 2 Click the AirPlay icon on the window.



- 3 Select **Philips DCW8010 XXXXXX** (or user customized name) from the AirPlay list.





- 4 Select a media file and start play.  
 ↳ After a while, you will hear music from this system.





#### Tip

- When you stream audio from your iTunes music library on a PC/Mac, you can select more than one AirPlay-enabled devices (if available) at step 3 to stream music to all of them at the same time.
- If you are using an earlier version of iTunes, the AirPlay icon may be  instead of .

## Control play

You can select different play options from either your iTunes host device or this system.



#### Note

- Make sure that you have successfully streamed audio from your iTunes music library to this system.

- To start or pause play, press **▶||**.
- To skip to the previous or next track, press **◀◀ / ▶▶**.
- To adjust volume, press **VOL +/-** repeatedly.
- To mute or restore volume, press **🔊**.
- To switch back to the AirPlay audio source, press **AirPlay**.



#### Tip

- If you are streaming music from a PC/Mac, to control music play from this system, launch iTunes and tick **Allow iTunes audio control from remote speakers** in **Edit** (for Windows) or **iTunes** (for Mac) -> **Preferences...** -> **Devices**.

## Use advanced sound settings

### If your iTunes host device is an iPod touch/ iPhone/iPad:

For advanced sound settings and additional features, you can use your iPod touch/iPhone/iPad to download the **Philips SoundStudio** application from Apple App Store. It is a free application from Philips.

### If your iTunes host device is a Wi-Fi enabled PC/Mac:

For advanced sound settings, you can use the equalizer available on iTunes directly (**View -> Show Equalizer**).



#### Tip

- See the iTunes help documentation for more details.

## 7 Use the dock

You can enjoy audio from iPod/iPhone through this system.



### Note

- No audio output from the headphone socket in this situation.

### Compatible iPod/iPhone/iPad models

This system supports the following iPod, iPhone, and iPad models.

- iPad 2 and iPad
- iPhone 4S, iPhone 4, iPhone 3GS, and iPhone 3G
- iPod touch (1st, 2nd, 3rd, and 4th generations)
- iPod nano (2nd, 3rd, 4th, 5th, and 6th generations)

### Enjoy audio through the dock



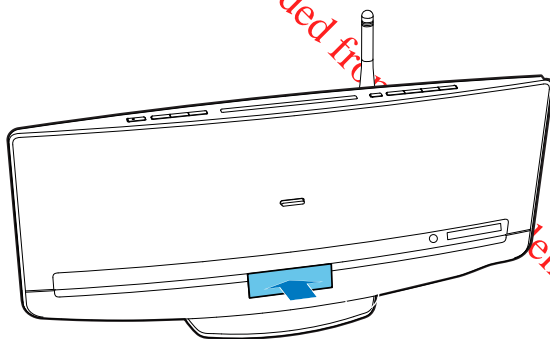
### Note

- The peak current through the dock connector is limited as 1,000 mA for iPod/iPhone and 2,100 mA for iPad/iPad 2. To avoid damage to your iPod/iPhone/iPad and this system, securely load your iPod/iPhone/iPad as indicated.

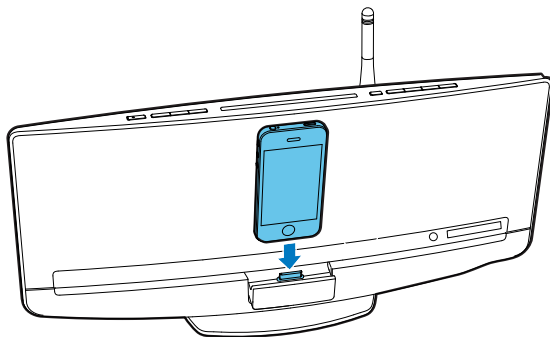
**1** Press **SOURCE** repeatedly to switch the source to **iPod\_iPhone\_iPad**.

- You can also press **DOCKING** to switch the source.

**2** Push the dock tray to eject it.



**3** Connect your iPod/iPhone/iPad to the dock.



**4** Play a track on your iPod/iPhone/iPad.

Buttons	Functions
▶	Start, pause, or resume play.
MENU/■	Access the playlist of iPod/iPhone.
▲/▼	Navigate through the playlist of iPod/iPhone.
◀◀/▶▶	Skip to the previous/next track.
	Press and hold to rewind or search forward fast.

## Charge your iPod/iPhone/iPad

Once the iPod/iPhone/iPad is docked and recognized, the charging starts.

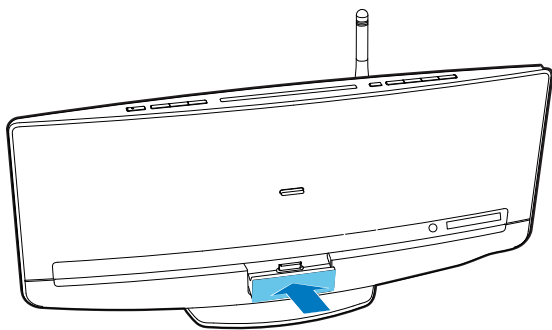
## Undock your iPod/iPhone



### Note

- Risk of damage to the dock or your iPod/iPhone: Do not twist or shake your iPod/iPhone/iPad.

- 1 Pull the iPod/iPhone/iPad out of the dock.
- 2 Push the dock tray inwards until you hear a "click" to store it.



## 8 Listen to FM radio

### Tune to an FM radio station

#### Note

- Make sure that you have connected and fully extended the FM antenna.

- 1 Press **SOURCE** or **TUNER/MP3-LINK** repeatedly to switch the source to FM tuner.  
↳ **FM** and the current frequency are displayed.
- 2 Press and hold **◀◀ / ▶▶** until **SEARCH - / SEARCH +** is displayed.  
↳ The FM tuner tunes to a station with strong reception.
  - To tune to a station at a specific frequency, press **◀◀ / ▶▶** repeatedly until the desired frequency is displayed.

### Program radio stations automatically

#### Note

- You can program a maximum of 20 preset radio stations.

- Press and hold **PROG/CLOCK** until **AUTO SRH** (automatic search) is displayed.
- ↳ All available stations are programmed in the order of waveband reception strength.
  - ↳ The first programmed radio station is broadcast automatically.

### Program radio stations manually

#### Note

- You can program a maximum of 20 preset radio stations.
- To overwrite a programmed radio station, store another one with its sequence number.

- 1 Tune to a radio station.
- 2 Press **PROG/CLOCK** to activate programming.  
↳ **PXX** (XX indicates the sequence number) blinks.
- 3 Press **▲ / ▼** to allocate a sequence number from 01 to 20 to this radio station, and then press **PROG/CLOCK** to confirm.  
↳ The preset sequence number and the frequency of this radio station are displayed.
- 4 Repeat steps 1-3 to program more stations.

### Tune to a preset radio station

- Press **▲ / ▼** to select the sequence number of that preset radio station.
- Enter its sequence number with numeric keypad.

---

## Display RDS information

RDS (Radio Data System) is a service that allows FM stations to show additional information.

- 1 Tune to an RDS radio station.
- 2 Press **DISPLAY/RDS** repeatedly to scroll through available information:
  - Station name
  - Program type such as **NEWS** (news), **SPORT** (sport), **POP M** (pop music)...
  - Text messages
  - RDS clock
  - Frequency

---

## Synchronize clock with RDS

You can synchronize system clock with an RDS radio station.

- 1 Tune to an RDS radio station that transmits time signals.
- 2 Press and hold **DISPLAY/RDS** until **CT SYNC** is displayed.
  - ↳ The system reads RDS time automatically.
  - ↳ If no time signal is received, **NO CT** is displayed.



### Note

- The accuracy of the clock depends on the RDS radio station.

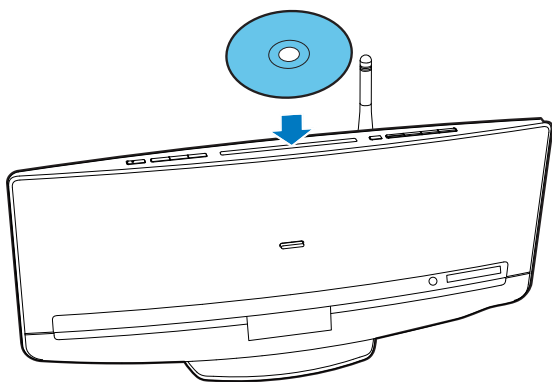
## 9 Play

### Play a disc



#### Caution

- Never insert any object other than a disc of 12-cm diameter into the disc compartment.



- 1 Press **SOURCE** repeatedly to switch the source to **DISC**.
  - You can also press **CD** to switch the source.
- 2 Insert a disc into the disc compartment with the printed side facing you.
  - ↳ Play starts automatically after a few seconds.
  - If play does not start automatically, Press **▶||** to start play.

### Play from a USB storage device

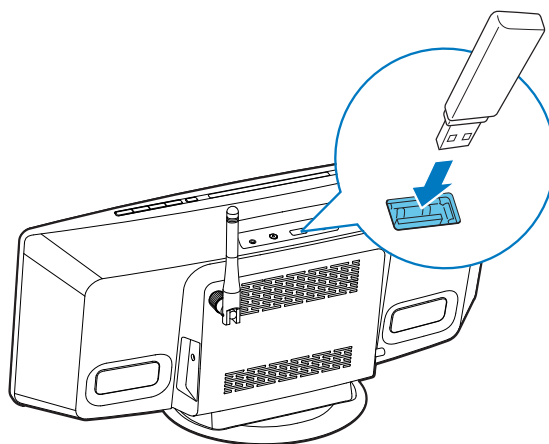
This system can play .mp3 and .wma files that are copied onto a supported USB storage device:


- Flash drive
- Memory card reader
- HDD: hard disc drive (This product can detect only a portable HDD with USB power peak current no more than 500 mA.)



#### Note

- Philips does not guarantee compatibility with all USB storage devices.
- NTFS (New Technology File System) file system is not supported.



- 1 Connect the USB storage device to the  socket.
- 2 Press **SOURCE** repeatedly to switch the source to **USB**.
  - You can also press **USB** to switch the source.
  - ↳ Play starts automatically.

If play does not start automatically,

- 1 Press **▲ / ▼** to select a folder.
- 2 Press **◀◀ / ▶▶** to select a file.
- 3 Press **▶||** to start play.

## Control play

During play, follow the instructions below to control play.

Buttons	Functions
▶	Pause or resume play.
■	Stop play.
⏮ / ⏭	Skip to the previous or next track.
	Press and hold to rewind a track or search forward fast within a track.
▲ / ▼	Skip to the previous or next album when one or more album exit.
<div>1 2 3</div> <div>4 5 6</div> <div>7 8 9</div> <div>0</div>	Enter the number of a track to play it.
REPEAT/SHUFFLE	Select an available play mode. <ul style="list-style-type: none"><li>• <b>RPT 1</b>: repeat the current track</li><li>• <b>RPT ALL</b>: repeat all tracks</li><li>• <b>SHUFFLE</b>: (press and hold to) play tracks randomly</li><li>• <b>NORMAL</b>: play tracks in sequence</li></ul>

# 10 Other features

## Set alarm timer

You can use this system as an alarm clock.



### Note

- Make sure that you have set the clock correctly.

- 1 In normal standby mode, press and hold **SLEEP/SNOOZE** until **DISC** blinks.
- 2 Press **◀◀◀ / ▶▶▶** repeatedly to select an alarm source.
- 3 Press **SLEEP/SNOOZE** to confirm.  
↳ The hour digits blink.
- 4 Press **◀◀◀ / ▶▶▶** repeatedly to set the hour digits, and then press **SLEEP/SNOOZE** to confirm.  
↳ The minute digits blink.
- 5 Press **◀◀◀ / ▶▶▶** to set the minute digits, and then press **SLEEP/SNOOZE** to confirm.  
↳ **A** (alarm) and the current time is displayed.
  - To check the alarm time, press **SLEEP/SNOOZE** in normal standby mode.
  - To deactivate the alarm timer, press **SLEEP/SNOOZE** repeatedly in normal standby mode until **A** (alarm) disappears.
  - To re-activate the alarm timer, press **SLEEP/SNOOZE** repeatedly in normal standby mode until **A** (alarm) is displayed.
  - To pause the alarm, press **SLEEP/SNOOZE** once. After five minutes, the alarm sounds again.
  - To stop the alarm, press and hold **SLEEP/SNOOZE** until **ALM STOP** is displayed.



### Tip

- you can set the hour/minute digits by the numeric keypad.

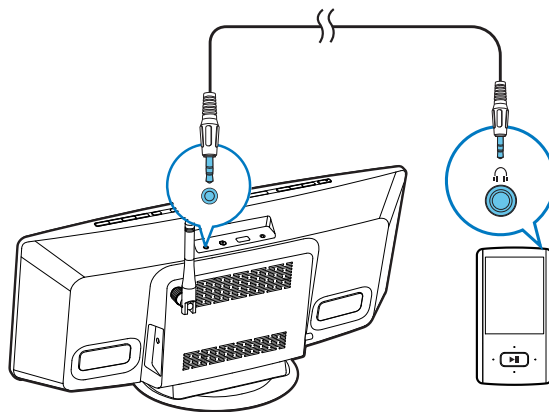
## Set sleep timer

In working mode, press **SLEEP/SNOOZE** repeatedly to select a preset period (30, 60, 90, or 120 minutes).

- To deactivate the sleep timer, press **SLEEP/SNOOZE** repeatedly until **SLEEP OFF** is displayed.

## Listen to an external audio device


You can listen to an external audio device, for example, MP3 player through this product.



- 1 Press **TUNER/MP3-LINK** repeatedly to switch the source to **MP3 LINK**.
- 2 Connect an MP3 Link cable to
  - the **MP3-LINK** socket on the top panel of the system, and
  - the headphone socket on the external device (for example, MP3 player).
- 3 Play the external device. (See the user manual of external device).

---

## Listen through headphone

Plug a headphone with 3.5-mm plug into the  socket on the top panel.



### Note

- No audio output from the headphone socket when you play the playlist of a docked iPod/iPhone/iPad. Listen through the speakers instead.

# 11 Adjust sound

The following operations are applicable to all supported media.

---

## Adjust volume level

- On the remote control, press **VOL +/-** repeatedly.
- On the main unit, press **VOL+/VOL-** repeatedly.

---

## Mute sound

- Press **MUTE** to mute or restore the sound.

---

## Adjust default sound settings

- 1 Press **SOUND** repeatedly to select one of the setting menus.
  - **DSC**: Select a preset sound equalizer.
  - **DBB**: Select a DBB sound effect or disable it.
  - **FULL SOUND**: Enable to enjoy full-range sound output.
- 2 Press **◀◀/▶▶** to select an option.

# 12 Adjust system settings

- 1 Press **SETTINGS** to access the menu of system settings.  
↳ **WIFI** is displayed.
- 2 Press **▲** / **▼** to select a menu option.
  - **WIFI**, **IP ADDR**, **DIMMER**, **NET RST**, **FAC RST**, or **VERSION**
- 3 Press **▶▶I** to view system status or change system settings.
  - To return to the upper-level menu, press **I◀◀**.

Menu Option	Function	Remarks
<b>WIFI</b>	Display the status of connection between this system and your home Wi-Fi network.	Select <b>WIFI</b> and then press <b>▶▶I</b> .
<b>IP ADDR</b>	Display the IP address of this system in your home Wi-Fi network.	Select <b>IP ADDR</b> , and then press <b>▶▶I</b> .
<b>DIMMER</b>	Select a brightness level of VFD screen.	1) Select <b>DIMMER</b> , and then press <b>▶▶I</b> . 2) Press <b>▲</b> / <b>▼</b> to select a bright level.
<b>NET RST</b>	Reset the network connection.	1) Select <b>NET RST</b> . 2) Press <b>▶▶I</b> twice to start resetting.
<b>FAC RST</b>	Reset this system to factory default settings.	1) Select <b>FAC RST</b> . 2) Press <b>▶▶I</b> twice to start resetting.
<b>VERSION</b>	Display the firmware version.	1) Select <b>VERSION</b> , and then press <b>▶▶I</b> . 2) Press <b>▲</b> / <b>▼</b> to select a version name. 3) Press <b>▶▶I</b> to display the current version.

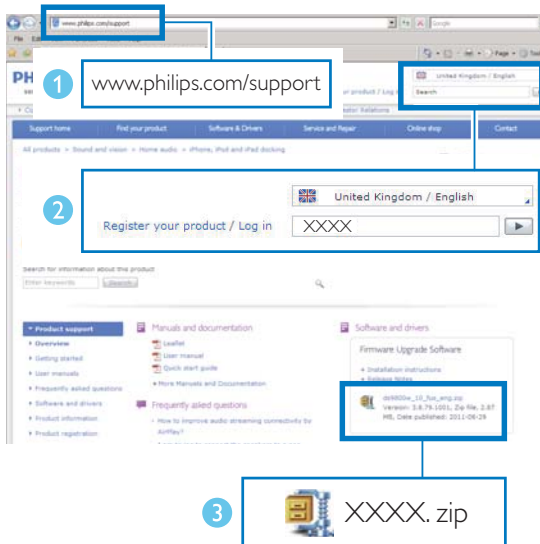
# 13 Update firmware

To improve the performance of this system, Philips may offer you new firmware for upgrade. Please register your product at [www.philips.com/welcome](http://www.philips.com/welcome) for information about the latest firmware.

## Note

- You can update the firmware with a PC/Mac only.

## Download the update file



- On your PC/Mac, go to [www.philips.com/support](http://www.philips.com/support).
- Enter the model number to find the latest firmware upgrade file available.
- Save the upgrade file to your hard drive.

## Update the firmware from the configuration page

### Warning

- Make sure that the power is not interrupted during firmware upgrade.

### Note

- If you use an internet browser other than Apple Safari on your PC/Mac, remember to go to the Wi-Fi router configuration page and write down the IP address of this system. See the user manual of your Wi-Fi router for how to find the IP addresses of devices that are connected to the Wi-Fi router.

- Power on this system (see 'Turn on' on page 16).
  - It takes up to 35 seconds for the system to boot up. During boot-up, the LED indicator in the middle of the **WIFI SETUP** button blinks yellow.
  - After boot-up, you can hear a beep and the LED indicator stays solid yellow. This system is connected to the last configured Wi-Fi network automatically.
- Make sure that this system and your PC/Mac are connected to the same Wi-Fi router.
- Open Apple **Safari** on your PC/Mac, and then select '**Philips DCW8010 XXXXXX**' (or the customized device name) from the Bonjour pull-down list.
  - Or open another internet browser on your PC/Mac, and then type in the IP address of this system (available on the Wi-Fi router configuration page) at the address bar.
    - The configuration web page of this system is displayed.
- Follow the on-screen instruction to complete the firmware update.



## Note

- In case the firmware update fails, you can try the above procedures again.
- After successful firmware update, if there is any problem with the Wi-Fi connection, reconnect the power of this system, and then set up the Wi-Fi network for this system again (see 'Connect to your home Wi-Fi network' on page 17).

# 14 Product information

## Note

- Product information is subject to change without prior notice.

## Specifications

### Amplifier

Rated output power	40 W
Frequency response	60 Hz - 20 kHz, $\pm 3$ dB
Signal-to-noise ratio	$\geq 75$ dB
MP3 LINK input	1,000 mV RMS

### Disc

Laser type	Semiconductor
Disc diameter	12 cm
Support discs	Audio CD, CD-R, CD-RW, MP3-CD, WMA-CD
Audio DAC	24 Bits / 44.1 kHz
Total harmonic distortion	< 1%

### Tuner

Tuning Range	FM: 87.5 - 108 MHz
Tuning grid	50 KHz
Sensitivity	
- Mono, 26dB S/N Ratio	<22 dBu
- Stereo, 46dB S/N	<45 dBu
Ratio	
Search Selectivity	<30 dBu
Total Harmonic Distortion	<3%
Signal to Noise Ratio	>45 dB

### Speakers

Speaker Impedance	8 Ohm
Speaker Driver	2 X 2.75" full range speaker
Sensitivity	> 82 dB/m/W

### Wireless

Wireless standard	802.11b/g
Wireless security	WEP (64 or 128 bit), WPA/WPA2 (8-63 characters)
Frequency range	2412 - 2462 MHz (CH1-CH11) (for /79, /37, /55, /97) 2412 - 2472 MHz (CH1-CH13) (for /12, /10, /05)
PBC (one button push)	Yes

### General

AC power input	100-240 V~, 50-60 Hz, 2.0 A
Output of AC-DC power adaptor	18.0 V $\equiv$ , 2.8 A
Model No. of AC-DC power adaptor	EFS05001800280CE
Trademark of AC-DC power adaptor	PHILIPS
Operation power consumption	25 W
Power consumption at standby mode	< 6 W
Power consumption at eco power standby mode	< 0.5 W
Dimensions (W x H x D)	500 x 234 x 164 mm
Net weight	3.1 kg

## USB playability information

### Compatible USB devices:

- USB flash memory (USB 2.0 or USB1.1)
- USB flash players (USB 2.0 or USB1.1)
- memory cards (requires an additional card reader to work with this unit)

### Supported formats:

- USB or memory file format FAT12, FAT16, FAT32 (sector size: 512 bytes)
- MP3 bit rate (data rate): 32-320 Kbps and variable bit rate
- WMA v9 or earlier
- Directory nesting up to a maximum of 8 levels
- Number of albums/ folders: maximum 99
- Number of tracks/titles: maximum 999
- ID3 tag v2.0 or later
- File name in Unicode UTF8 (maximum length: 128 bytes)

### Unsupported formats:

- Empty albums: an empty album is an album that does not contain MP3/ WMA files, and will not be shown in the display.
- Unsupported file formats are skipped. For example, Word documents (.doc) or MP3 files with extension .dlf are ignored and not played.
- AAC, WAV, PCM audio files
- DRM protected WMA files (.wav, .m4a, .m4p, .mp4, .aac)
- WMA files in Lossless format

## Supported MP3 disc formats

- ISO9660, Joliet
- Maximum title number: 512 (depending on file name length)
- Maximum album number: 255
- Supported sampling frequencies: 32 kHz, 44.1kHz, 48 kHz

- Supported Bit-rates: 32~256 (kbps), variable bit rates

## RDS program types

NO TYPE	No RDS programme type
NEWS	News services
AFFAIRS	Politics and current affairs
INFO	Special information programs
SPORT	Sports
EDUCATE	Education and advanced training
DRAMA	Radio plays and literature
CULTURE	Culture, religion and society
SCIENCE	Science
VARIED	Entertainment programs
POP M	Pop music
ROCK M	Rock music
MOR M	Light music
LIGHT M	Light classical music
CLASSICS	Classical music
OTHER M	Special music programs
WEATHER	Weather
FINANCE	Finance
CHILDREN	Children's programs
SOCIAL	Social Affairs
RELIGION	Religion
PHONE IN	Phone In
TRAVEL	Travel
LEISURE	Leisure
JAZZ	Jazz Music
COUNTRY	Country Music
NATION M	National Music
OLDIES	Oldies Music
FOLK M	Folk Music
DOCUMENT	Documentary
TES	Alarm Test
ALARM	Alarm

# 15 Troubleshooting



## Warning

- Never remove the casing of this product.

To keep the warranty valid, never try to repair the product yourself.

If you encounter problems when using this product, check the following points before requesting service. If the problem remains unsolved, go to the Philips Web page ([www.philips.com/support](http://www.philips.com/support)). When you contact Philips, make sure that the product is nearby and the model number and serial number are available.

Problem	Solution
No power.	Make sure that the power adaptor is securely connected to both the power supply and the CD sound machine. Make sure that there is power at the AC outlet.
No sound or poor sound.	Adjust the volume. Disconnect the headphones. Make sure that you have select the correct audio source. If you select audio input by AirPlay as the source, make sure that <ul style="list-style-type: none"><li>• the host is not muted,</li><li>• this system is selected as the AirPlay target receiver on your host,</li><li>• the network connection between the host and your Wi-Fi router is available, and</li><li>• the Wi-Fi connection between this system and your Wi-Fi router is available.</li></ul>
No response from the system.	Reconnect the power adaptor and wait about 35 seconds for this system to boot-up.
Remote control does not work.	Before you press any function button, select the correct source with the remote control instead of the main unit. Reduce the distance between the remote control and the main unit. Insert each battery with its polarity (+/- signs) aligned as indicated. Replace the batteries. Aim the remote control directly at the sensor on the front panel of the main unit.
No disc is detected.	Insert a disc of 12-cm diameter; never one of other sizes. Make sure that the label of the disc faces you. Wait until the moisture condensation at the lens is cleared. Replace or clean the disc. Make sure that the recordable disc is finalized and the format supported.
USB storage device is not supported.	Make sure that the USB storage device is compatible with the system. Try another one.

Problem	Solution
Cannot play some files on the USB storage device.	Make sure that the file format is supported.
	Make sure that the file quantity does not exceed the maximum.
Radio reception is poor.	Increase the distance between the system and other electrical appliances.
	Fully extend the antenna and adjust its position.
	Connect an outdoor FM antenna instead.
Timer does not work.	Set the clock correctly.
	Switch on the timer.
Clock/timer setting is erased.	Power is interrupted or cut off.
	Reset the clock/timer.
Wi-Fi network connection failed.	Check whether your Wi-Fi router is Wi-Fi 802.11b/g certified. This device is only compatible with Wi-Fi 802.11b/g certified routers.
	If your Wi-Fi router is Wi-Fi 802.11n certified, make sure to enable the 802.11b/g mode. This system does not support connection to routers with 802.11n only.
	This system does not support the WPS-PIN method.
	If your Wi-Fi router supports WPS and the WPS-PBC method but fails to connect to this system, try the other Wi-Fi setup methods indicated in this user manual (see 'Method 3: Connect to a non-WPS router' on page 19).
	Enable SSID broadcast on the Wi-Fi router.
	Keep away from potential sources of interference which may affect Wi-Fi signal, such as microwave ovens.
	If you fail to use your PC for Wi-Fi network setup, check whether your PC is using a Wi-Fi network. You cannot use Ethernet Wi-Fi connection for AirPlay network setup.
	make sure that the SSID name of your home router consists of alphanumeric characters, with no space or special characters like %/#?* inserted.
	If you renamed the AirPlay device ' <b>Philips DCW8010 XXXXXX</b> ' in the setting menu, do not use special characters or symbols.
	For some new types of Wi-Fi routers, a network name (SSID) may be created automatically when you use WPS for connection. Always change the default network name (SSID) to a simple one that consists of alphanumeric characters, and also change the Wi-Fi security mode to secure your network.

Problem	Solution
Occasional breaking of AirPlay music streaming	<p>Do one or all of the following:</p> <ul style="list-style-type: none"> <li>• Move this system closer to your Wi-Fi router.</li> <li>• Keep the space between this system and your Wi-Fi router clear of any obstacle.</li> <li>• Do not use Wi-Fi channel that is overlapped by the nearby Wi-Fi network.</li> <li>• Check whether your network speed is fast enough (in cases where multiple devices share the same router, the AirPlay performance may be affected). Turn off the other devices connected to your home router.</li> <li>• Enable the Quality of Service (QoS) option (if available on the Wi-Fi router).</li> <li>• Turn off other Wi-Fi routers.</li> </ul>
No AirPlay icon on my iTunes host device.	<p>Make sure that this system is already connected to your home Wi-Fi network.</p> <p>Before you open iTunes, make sure that you have enabled Bonjour service in your PC. Take Windows XP for example: to enable the service, click <b>Start -&gt; Control Panel</b>, and double-click <b>Administrative Tools -&gt; Services -&gt; Bonjour Service</b>, and then click <b>Start</b> followed by <b>OK</b> on the pop-up menu.</p> <p>If the problem remains, try to restart this system.</p>
AirPlay connection failed with Mac or PC	<p>Temporarily disable the firewall and security software to see whether it blocks the ports that AirPlay uses to stream content. See the help documentation of your firewall and security software on how to unblock the ports used by AirPlay.</p> <p>When you use iPod touch/iPhone/iPad/Mac/PC for AirPlay, if the music play breaks or stops, try to restart your iPod touch/iPhone/iPad, iTunes, or this system.</p> <p>Video streaming or FTP downloads may overload your router and therefore may cause interruptions during AirPlay music play. Try to reduce the load your router.</p>

