

Document No.: 233-UM-002

Document Type: User Manual

# **S911 Personal Locator V4 Utility & Quick Start Manual**

(Preliminary)

Version 2.0

May 18, 2012



Copyright 2012 Laipac Technology Inc.

## Release History

Revision	Date	Content
1.0	2012/04/12	It is initial release
1.1	2012/04/13	Add section “activation and inactivation of your unit”
1.11	2012/04/16	Revise section 2.2 to add more description for charging process
1.20	2012/04/25	introduction to “setupAIO20120425”
2.0	2012/05/18	Introduction to new utility “setupAIO20120511”

## **Content**

1. Knowing about your S911 Personal Locator V4
2. Getting Started
3. Un-install of previous utility
4. Installation of Utility “setupAIO”
5. Installation of USB driver
6. How to start configuration of your unit?
7. Quick configuration of your unit
8. Know more about configuration of unit
9. Go to LocationNow
10. Introduction to function buttons
11. LED indicator and unit’s working status

## 1. Knowing about your S911 Personal Locator V4

The following illustrations show the locations and names of the physical features with this product


H. Power On/Off 

B. Button 1 

G. Button 2 

J. Button 3 

I. Shift- 

When  being pressed in conjunction with **Button 1, 2, or 3**, the S-911 V4 performs alternate operations associated with those combinations of buttons.

F. Battery Charging LED Indication 

E. GPS LED Indication 

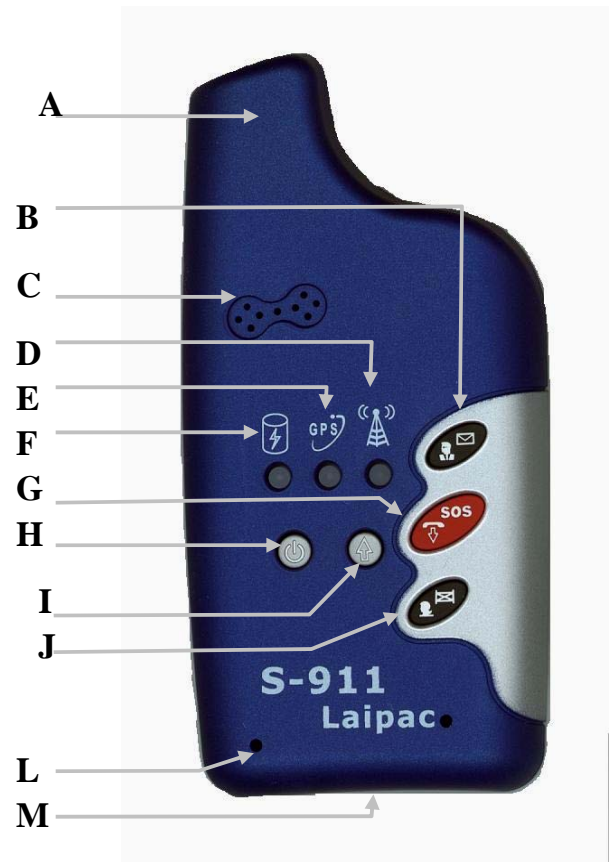
D. GSM/GPRS LED Indication 

A. GPS Antenna

C. Speaker

L. Microphone

M. USB connector for charging/Data Port



## 2. Getting Started

### 2.1 Requested by the configuration of unit

- AC-DC power adapter
- USB charging/programming Cable
- PC running Windows O.S.
- An activated SIM card with the requested GSM/GPRS service plan



Non-Contact Battery inhibitor slip

### 2.2 Charging the Battery

Before using the S-911 PL V4, user needs charge his unit's battery. Be sure to open the unit first and remove the inhibitor slip covering the on-board contacts to connect battery. In user's daily use, to speed up the unit's charging process, it is recommended that user should turn off the unit first, then, connect AC-DC power adaptor to unit through USB cable.

To charge the unit, plug the AC-DC adaptor into a wall outlet, then plug the charger's cable into the USB connector of the S-911, as shown in the picture. The Battery Status LED will turn to solid RED during charging and turn off when battery is fully charged. The whole charging process may last 3 to 4 hours to have the battery to be fully charged.



**Note: If unit keeps flashing its 3 LEDs, it means that this unit has not been configured after its leaving factory**

### **2.3 Installation of the SIM Card**

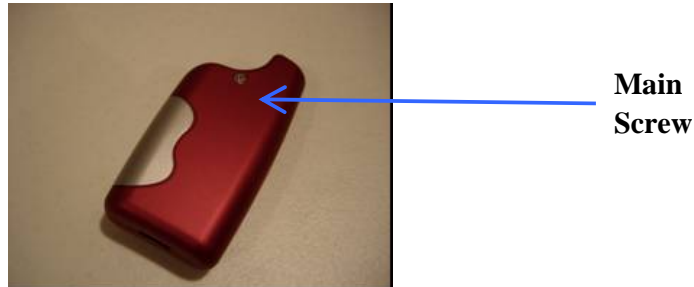
A valid SIM (Subscriber Identity Module) card must be provided by the user in order to use this device. Check with your GSM Mobile phone carriers carefully to ensure the SIM card coming with your contract or service plan, signed with carriers, is able to meet the requests from your GPS tracking service provider.

The SIM card must be a 3V SIM. The S-911 personal locator is not compatible with the older 5V version SIM cards.

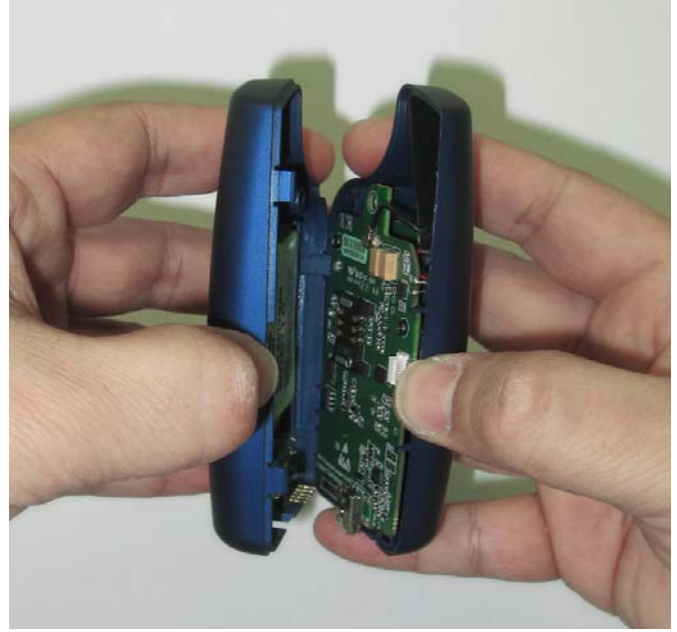
***Notes:** Your provider for location based service may supply you with an S-911 Personal Locator which has a SIM card already inside. If so, do not open the case or the warranty may be void. The S-911 Personal Locator is designed to be a robust and anti-vandalism personal safety device. It is unlike a cell phone where the battery may be easily removed. The user will find that in most situations, the SIM card has been installed by the distributor or service provider along with a warranty seal.*

If you need to insert a SIM card into your unit, follow the steps below:

#### **Step1. Remove the main screw**



#### **Step 2. Use your fingers to open the case as shown in the picture below**



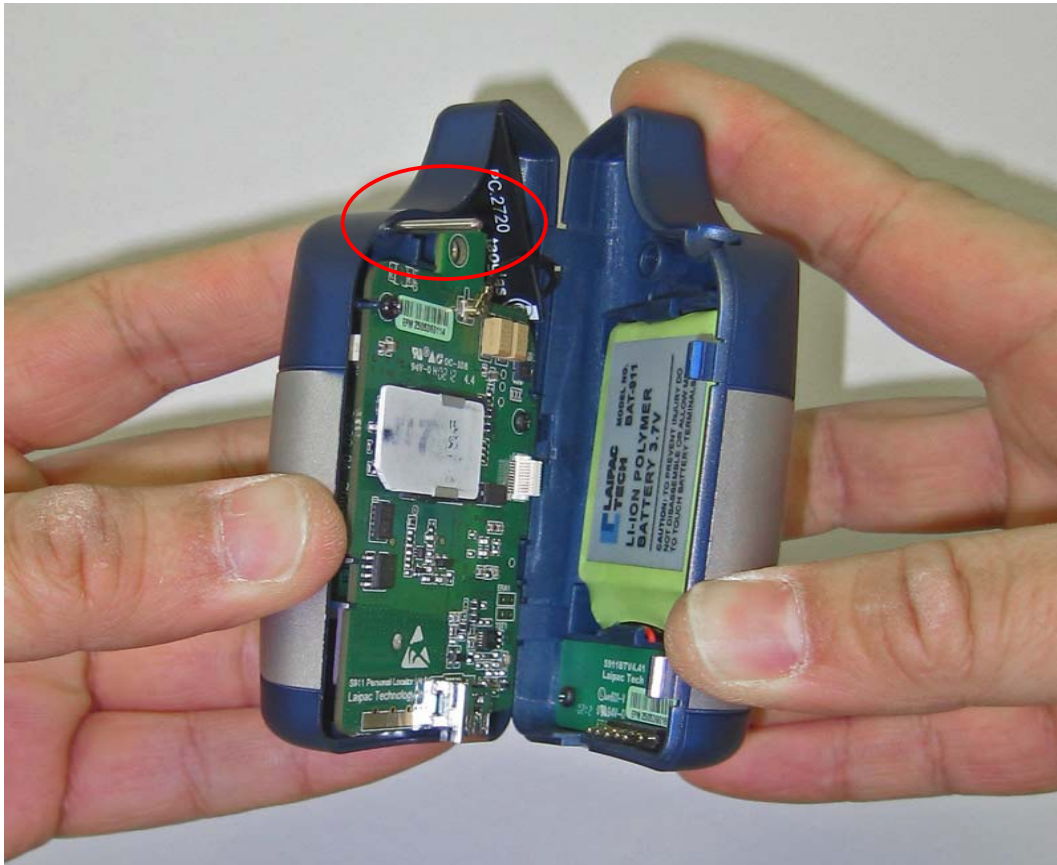
**Step 3. Follow the pictures for the placement of the SIM card**







**Step 4. Close the top and bottom cases carefully and tie them with the main screw.**







### **3. Un-installation of the utility**

If the PC or Laptop has installed the previous S911 PL V4 utility software, such as, “**Laipac Platform BE**”, or “**setupAIO20120425**”, user has to uninstall them before he installs the utility “**setupAIO20120511**”.

Otherwise, user can jump to next section now.

User should select Windows’ “All Program → Laipac Platform BE → uninstall Laipac Platform BE” to complete the un-installation.

Or, select Windows’ “All Program → Laipac Platform AIO → uninstall Laipac Platform AIO” to complete the un-installation.

#### **Note:**

For this part of user, after going through the installation of “setupAIO” utility, he/she can skip the installation procedure of USB driver described in section 5.

## **4. Installation of Utility “setupAIO”**

### **4.1 Introduction to setupAIO**

“**setupAIO**” is a stand-alone utility package for Laipac’s GPS tracking products below

- S911 Personal Locator V4 (S911-PL-V4)
- Starfinder Lite 201(SF-Lite 201)

Its first formal release version is “**setupAIO20120511**”, which is able to provide the two major functions below

- Configuration
- Firmware Update

### **4.2 How to get setupAIO**

User can download “**setupAIO**” to your PC by using the web link provided by Laipac. This utility package is a compressed file with suffix “.7z” or “.zip”, such as, “setupAIO20120511.7z” or up

Decompress it to get the executable program “setupAIO20120511.exe”

### **4.3 Installation of utility**

Run “setupAIO20120511.exe”.

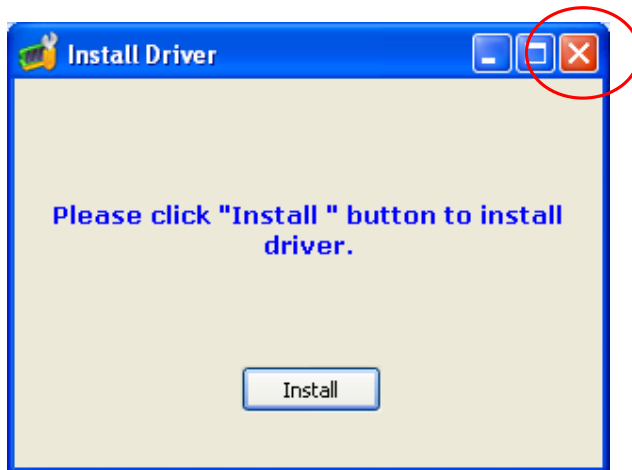
Follow “Setup Wizard” instruction, click “Next”, step by step, you will complete the installation of configuration.

## 5. Installation of USB driver

### 5.1 Installing USB driver on Windows XP

#### 5.1.1 Pre-installation

Go to Start → All Program → Laipac Platform → Install Driver



Click “Install”, then close the installation menu to complete pre-installation

#### 5.1.2 Installation of USB driver

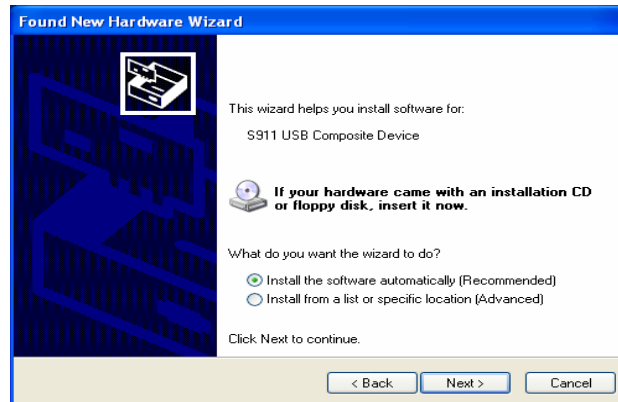
To connect your S-911 PL V4 unit with charged battery and activated SIM card through the USB cable.

**Reset S911 V4 by pressing both**  +  **buttons about 2 seconds**

If you get a “Found New Hardware” message, click the “*Yes, this time only*” then click “*Next*”. This is for the configuration of the USB interface.



If the Wizard appears again select “*Install the software automatically*” then click “*Next*”. This is for the configuration of the virtual COM port.



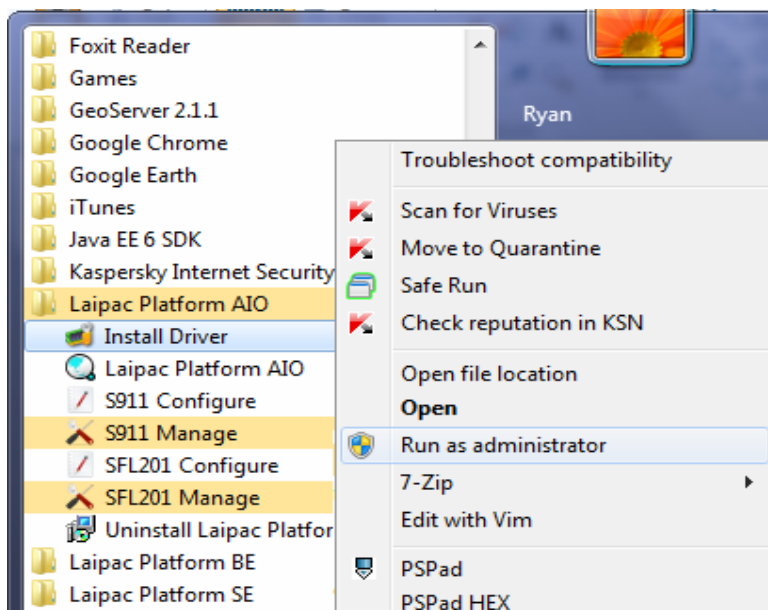
The device will be detected and will come up with another Windows digital signing warning message just click “*Continue Anyway*” then click “*Finish*”.

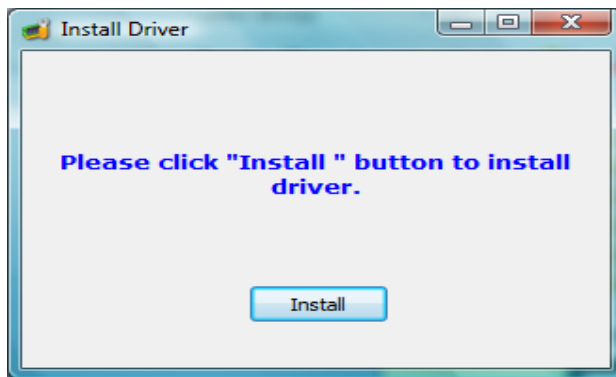
## 5.2 Installing USB driver on Windows 7 or Windows Vista

The procedure below is for Windows 7. It could be used as reference for Windows Vista.

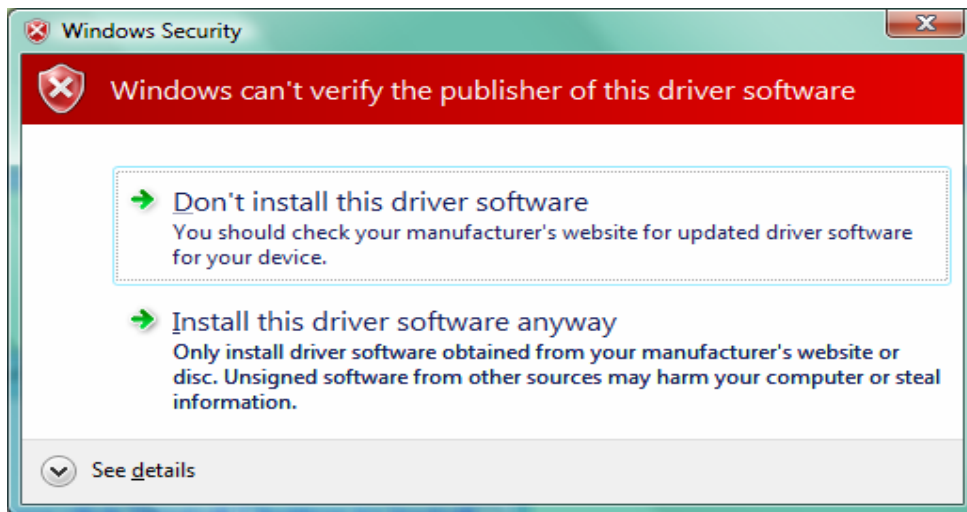
### 5.2.1 Pre-installation

Go to Start → All Program → Laipac Platform → Install Driver, then, right click to get menu below → select “**Run as administrator**”

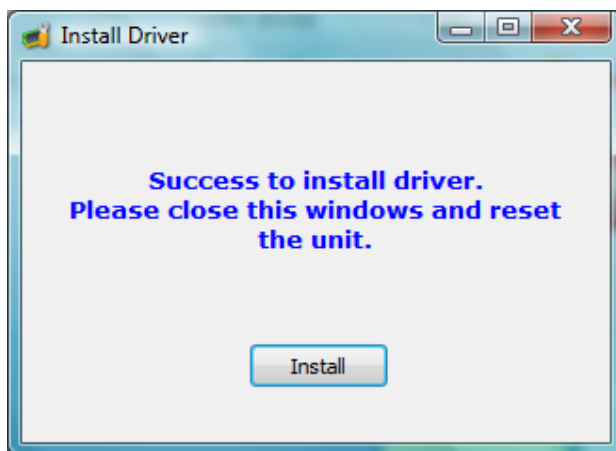




Click **“Install”**



Select **“Install this driver software anyway”**

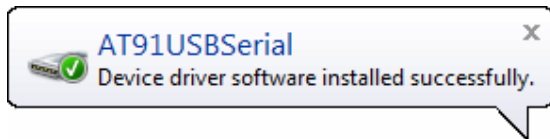


### 5.2.2 Installation of USB driver

To connect your S-911 PL V4 unit with charged battery and activated SIM card through the USB cable.

**Reset S911 V4 by pressing both**  +  **buttons about 2 seconds**

If PC screen's bottom right corner displays hint bubble below, it means USB driver has been installed successfully.

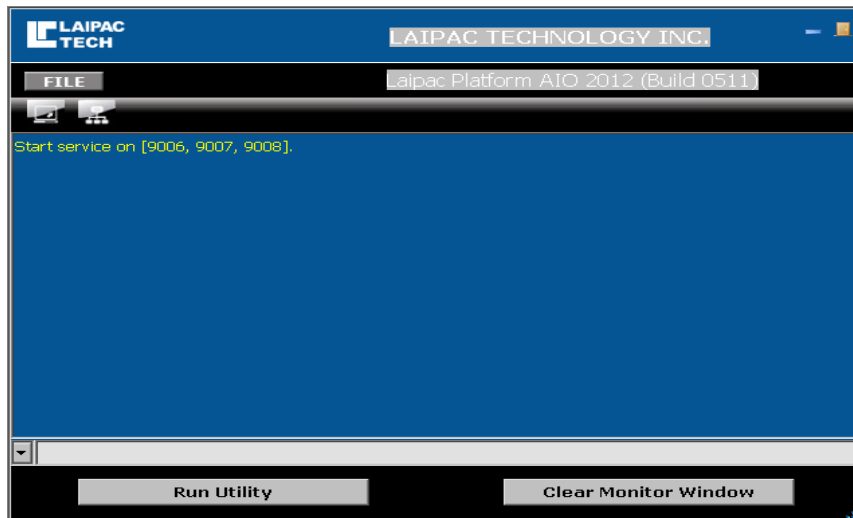


## 6. How to start Configuration of your unit?

### 6.1 Enter into setupAIO

There are 2 ways below to enter into setupAIO utility's platform menu, see Fig. 6.1-1

- a. Double click icon "Laipac Platform AIO on PC" on PC's desktop, or
- b. Go to Windows' Start → All Programs → Laipac Platform AIO → Laipac Platform AIO



**Fig. 6.1-1**



Then, click "Run Utility" button to enter into setupAIO utility's Cover Menu, Fig. 6.1-2



**Fig 6.1-2**



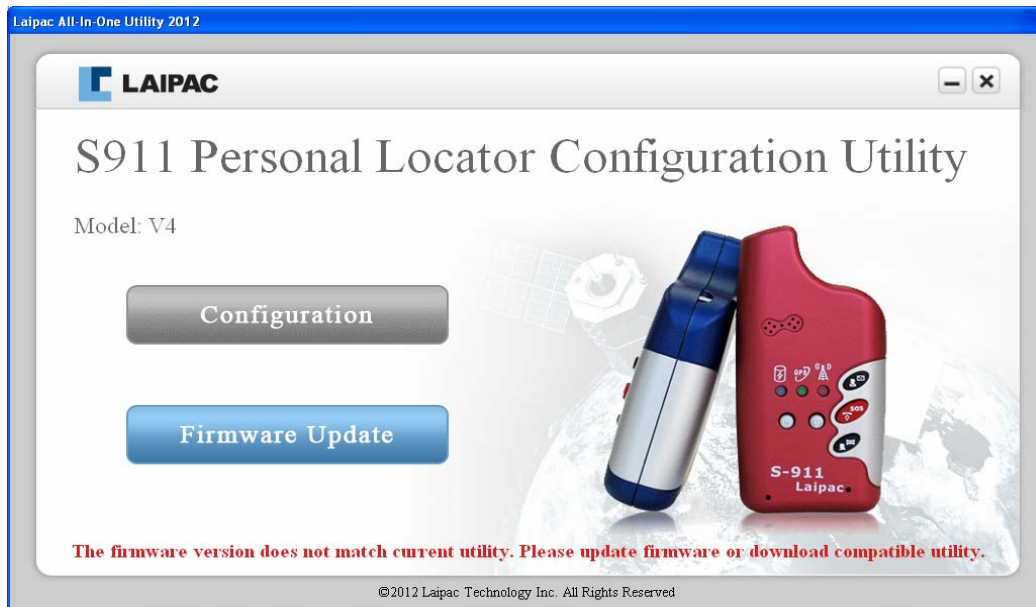
**6.2 Action on S911 PL V4 (unit)**

- (1) Connect SF-Lite unit to PC by using mini USB cable
- (2) Reset S911 V4 by pressing both  +  buttons about 2 seconds

**6.3 If unit is not with consistent firmware**

Under conditions below, user is able to see Fig. 6.3

- a. The connection between unit and utility is OK
- b. Unit is not with the consistent firmware version requested by this utility. Such as, for utility package setupAIO20120511, S911 PL V4 consistent firmware version is V1.10. If unit is with the previous version Firmware V1.02



**Fig. 6.3**

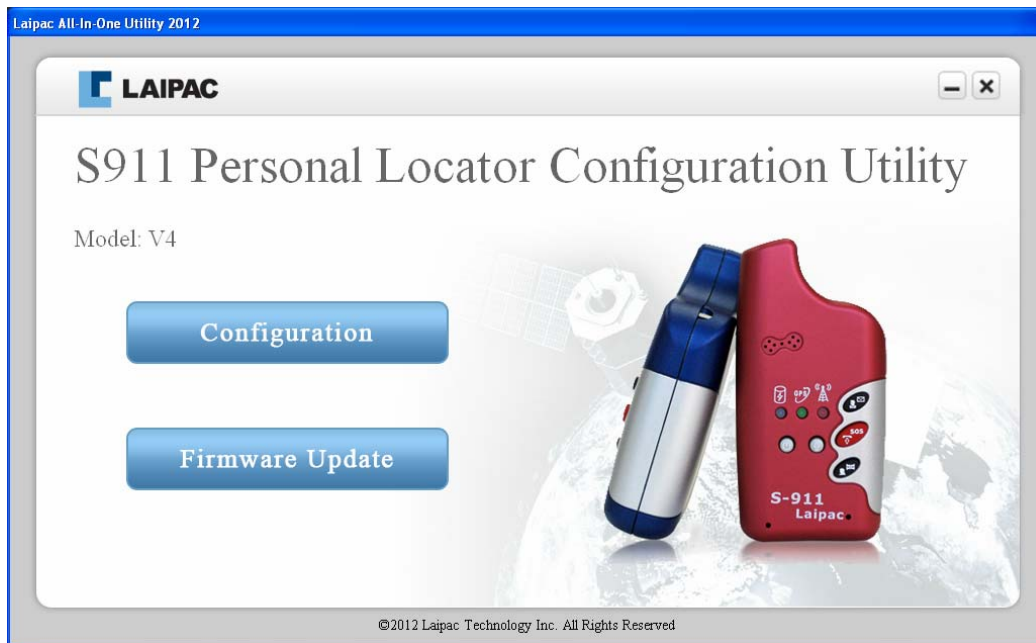
In this case, user needs to update the unit's firmware first, then, do the configuration on the unit.

For Firmware Update operation procedure, user can refer to another document, 251-UM-004, "S911 PL V4 Utility & Firmware Update Manual V2.0"

### 6.3 If unit has been activated (unlocked) and with consistent firmware

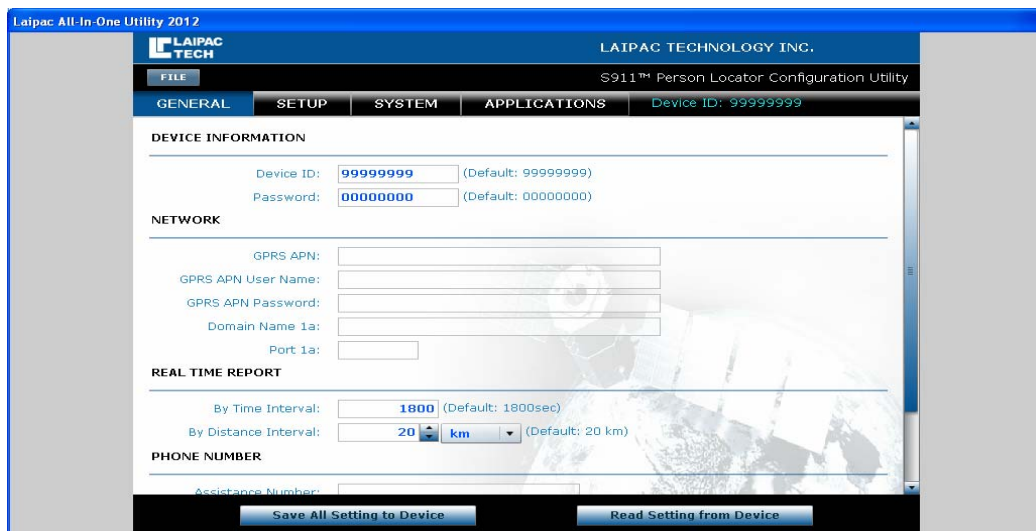
Under conditions below, user is able to see Fig. 6.3-1

- The connection between unit and utility is OK
- Unit has the consistent firmware version requested by this utility. Such as, for utility package setupAIO20120511, S911 PL V4's consistent firmware version is V1.10
- Unit has been activated (unlocked)



**Fig. 6.3-1**

User can click “Configuration” button to enter into Configuration Main Menu Fig. 6.3-2.  
Or, wait a while, automatically, user will be brought into Configuration Main Menu Fig. 6.3-2.



**Fig. 6.3-2**

## 7. Quick Configuration of your unit

### 7.1 General setting menu

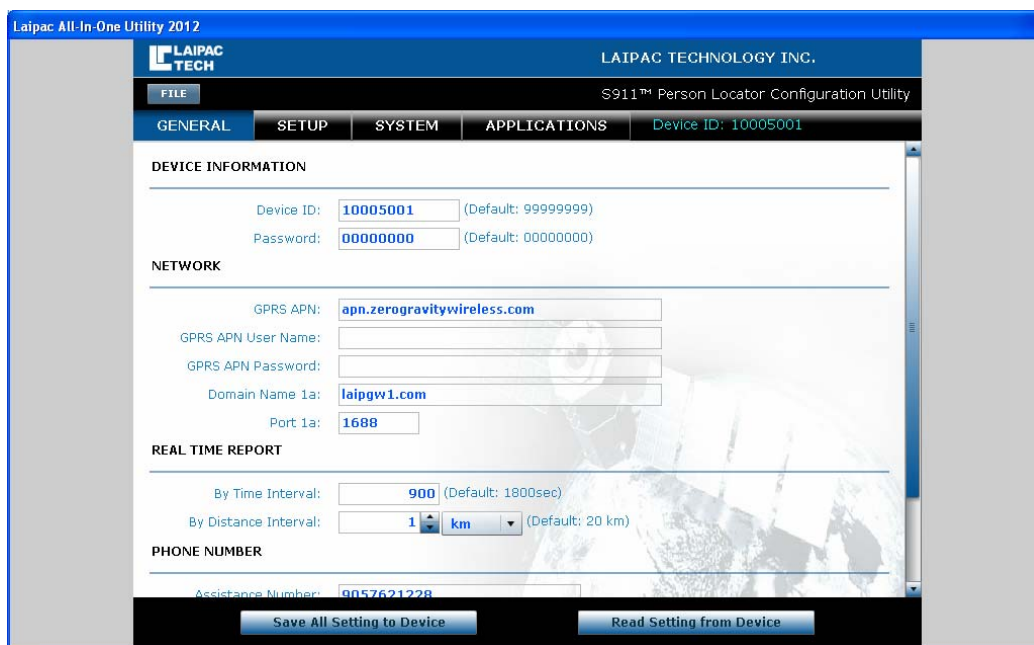


Fig. 7

Fig. 7 shows **General** setting menu. The setting items listed in this menu are those most basic setting for unit to be capable of accessing a remote location based service platform through certain GSM/GPRS network.

If user completes this menu properly and save those settings to unit, see section 6.3, he should be able to access his desired service platform now, refer to section 9.

**Device ID:** Specific unit identifier that identifies your device for online tracking. You can locate the Device ID on your Identity Leaflet or more accurately in your user account on the website [www.LocationNow.com](http://www.LocationNow.com).

**Password:** Used to protect the S911 PL V4 from other people affecting its operation with SMS commands. You can locate the Password on your Identity Leaflet.

**GPRS APN:** The Access Point Name is used by your SIM card to connect to the GPRS network. The Access Point is the carrier's server through which the traffic becomes converted from GSM to GPRS Internet traffic. Check with your SIM Card provider for this item.

**GPRS APN User Name:** The user name authorises your SIM card to access your carrier's Access Point. It could be blank in most of case.

**GPRS APN Password:** The password authenticates your SIM card to access your carrier's Access Point. It could be blank in most of case.

**Domain Name 1a:** This is the domain name of the remote server. For [www.LocationNow.com](http://www.LocationNow.com), use 'laipgw1.com'.

**Port 1a:** This is the Port used by the remote server with **Domain Name 1a**. For [www.LocationNow.com](http://www.LocationNow.com), it should be '1688'.

## 7.2 Read the unit's existing configuration

Click “Read Setting from Device” button, utility will read back the current configuration from unit. If this operation is successfully done, user should see a pop-on window to indicate “Read current setting ... Success”. See Fig. 7.2.

**Note:** If the unit has never done configuration before, this operation will be fail.

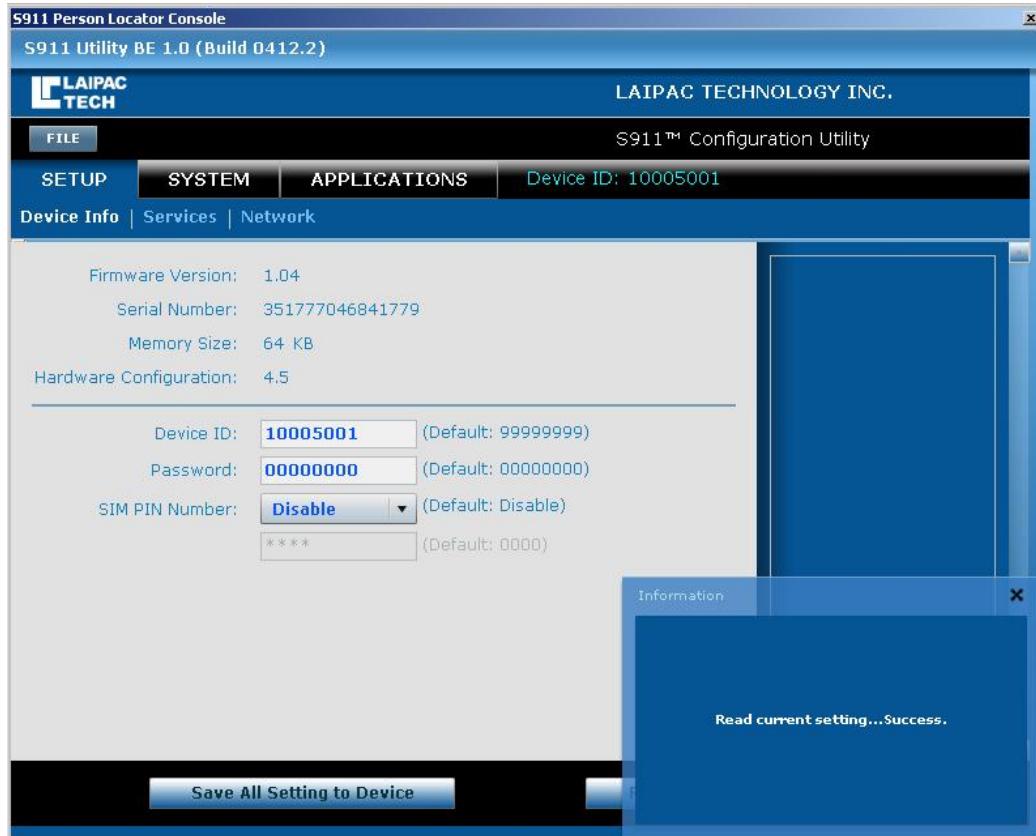


Fig. 7.2

### 7.3 Save unit's configuration

- A. Click "Save All Setting to Device" button
- B. Utility will write the edited configuration into unit and read it back to double check if this writing process is successful. If it is OK, operator should see "Writing new setting ... Success". See Fig. 7.3 below.

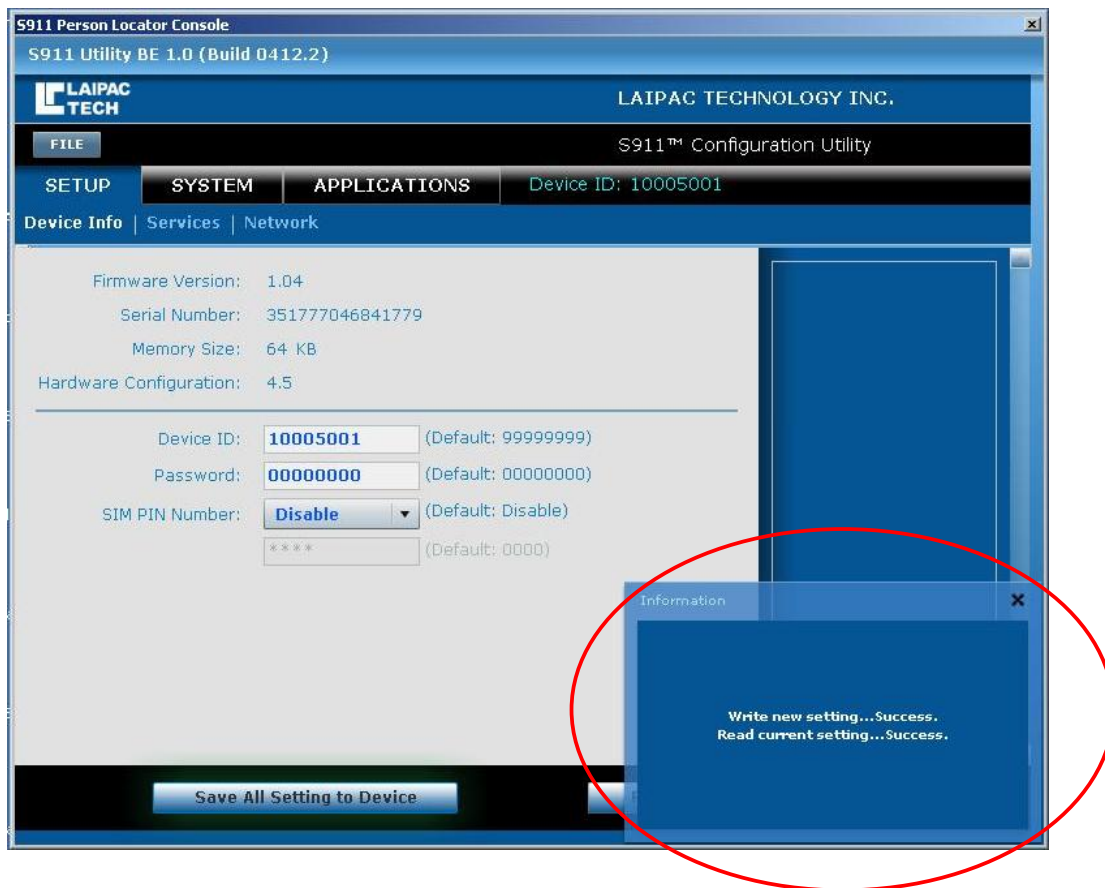


Fig. 7.3

## 8. Know more about configuration of unit

If user wants to know more about how to use his S911 PL V4, it is necessary for him to understand some key setting items are described in this section. It will be great helpful for him to configure and use his unit properly.

### 8.1 SETUP → Device ID & Password

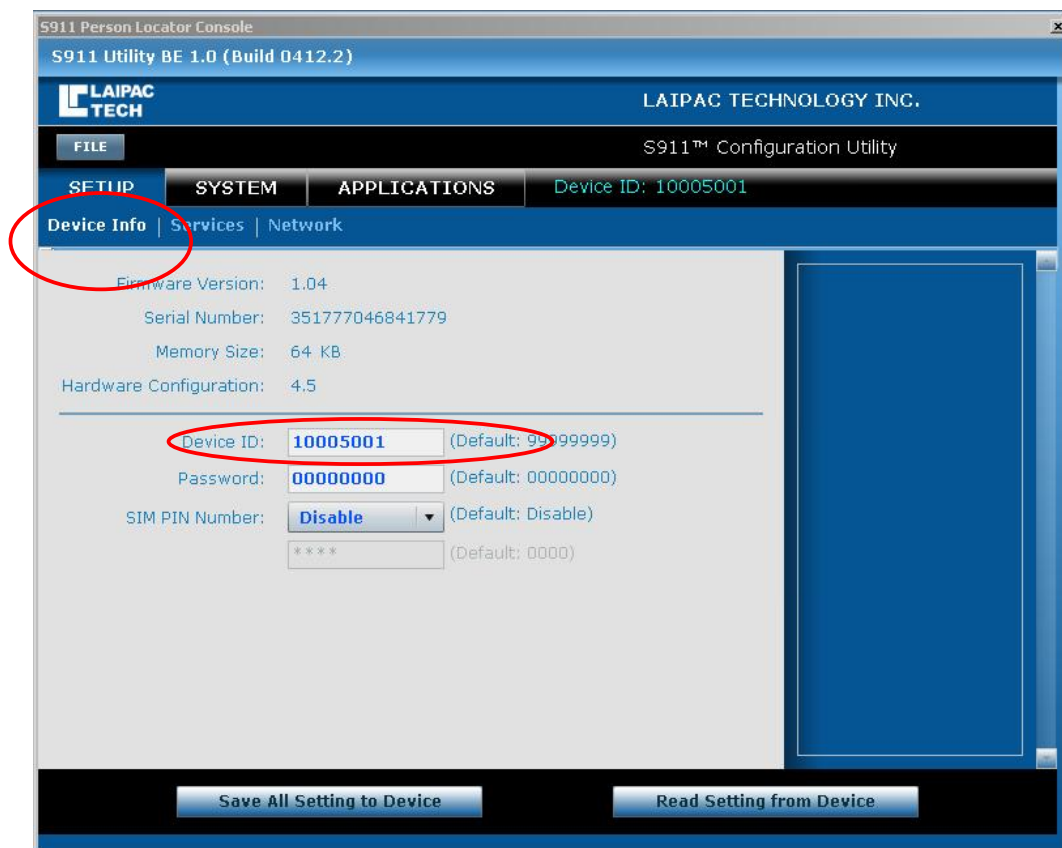
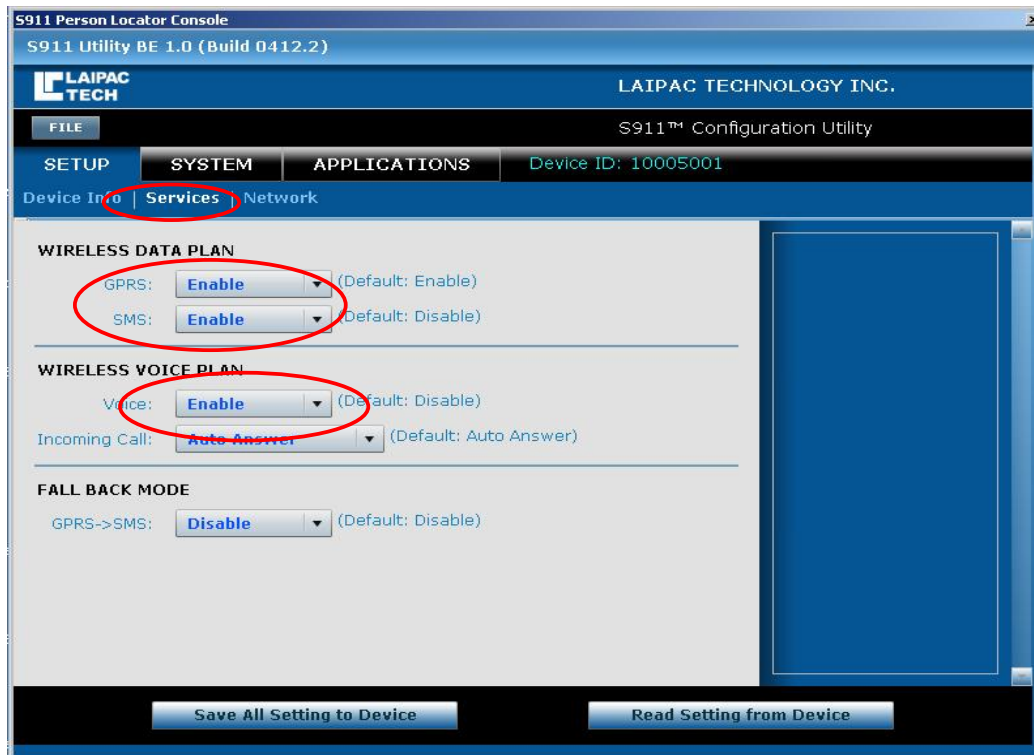


Fig. 8.1



## 8.2 SETUP → Service selection



Wireless Data Plan This section governs the default GSM connection settings or what the unit will connect to first.

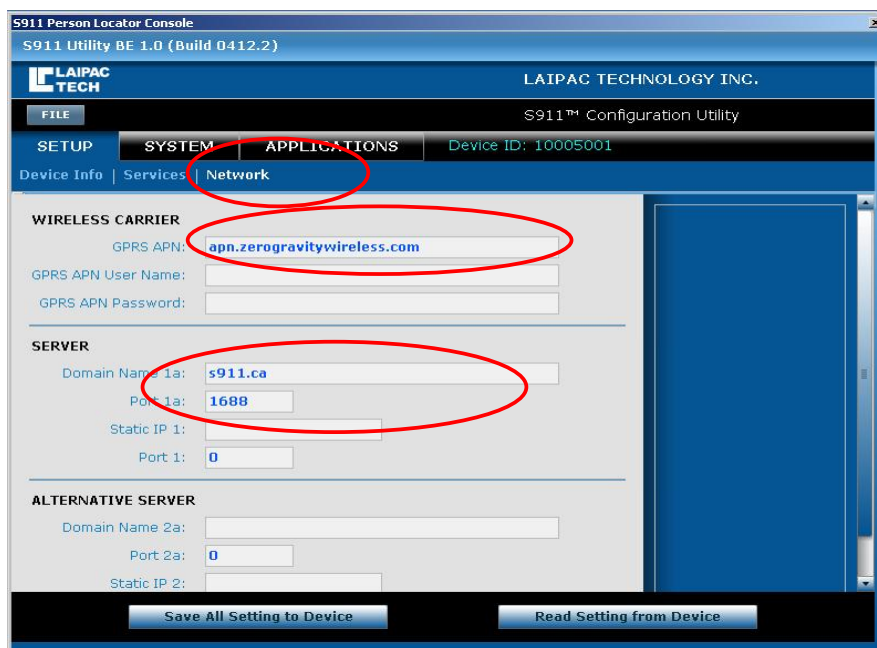
**GPRS:** If you are using LocationNow tracking services, this must be enabled. GPRS mode tells the device it will be transmitting its information across the internet.

**SMS:** If you are tracking service based on Short Message System rather than LocationNow, SMS mode should be enabled. It tells the device to transmit its information to another SMS device.

Wireless Voice Plan This section initializes the voice option in the S911 PL V4.

**Voice:** Originally, this setting is designed to tell unit if the existing SIM card is with voice calling enabled. Currently, unit has always enabled this setting actively. Of course, **if you are using SIM card without Voice Plan, no calling or voice communication can be accomplished.**

### 8.3 SETUP → Network setting



#### Wireless Carrier

This section covers the information required by the unit to access your carrier's Access Point.

#### **GPRS APN:**

The Access Point Name is used by your SIM card to connect to the GPRS network. The Access Point is the carrier's server through which the traffic becomes converted from GSM to GPRS Internet traffic. Check with your SIM Card provider for this item.

#### **User Name:**

The user name authorises your SIM card to access your carrier's Access Point. It could be blank in most of case.

#### **Password:**

The password authenticates your SIM card to access your carrier's Access Point. It could be blank in most of case.

#### Server

This section governs the destination end point for the GPRS traffic

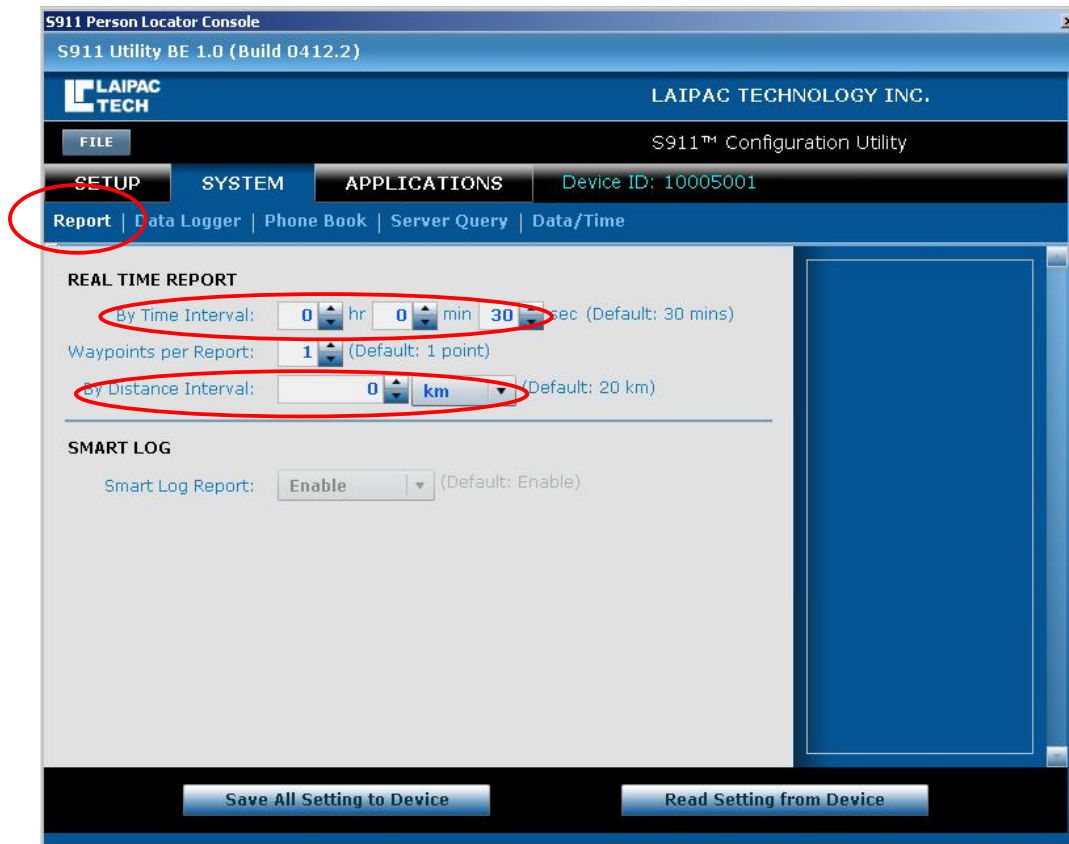
#### **Domain Name 1a:**

This is the domain name of the remote server. For [www.LocationNow.com](http://www.LocationNow.com) use 'laipgw1.com'.

#### **Port 1a:**

This is the Port used by the remote server with **Domain Name 1a**. For [www.LocationNow.com](http://www.LocationNow.com), it should be '1688'.

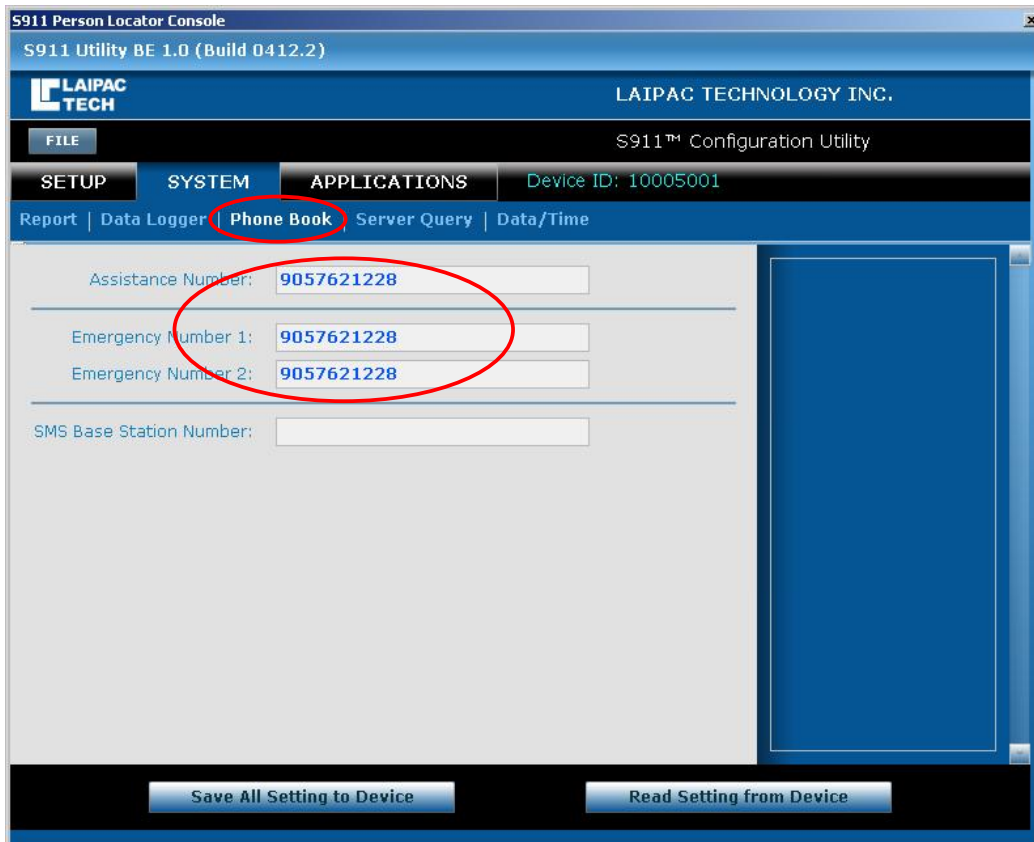
#### 8.4 System → Report → REAL TIME REPORT





Report and its setting:


This option allows you to specify how frequent the unit will send a position update. You can specify the report by time value in hours, minutes, and seconds. You can specify the report by distance value in kilometers, miles, or yards.


## 8.5 System → Phone Book



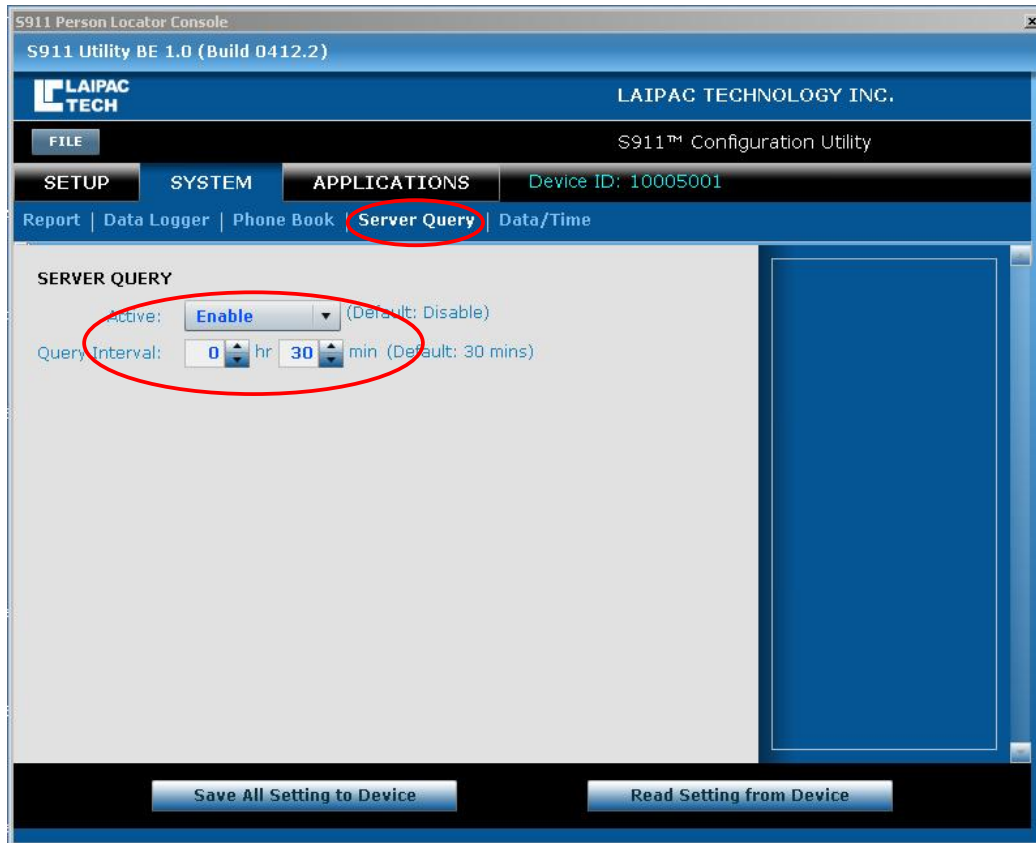
Assistance Number: When user presses the butt  +  , the following actions will be executed.

- J. Send SOS/Panic alert message to remote server.
- K. Send a SMS message to phone with Emergency No.1
- L. Dial the phone with Assistance Number

Emergency No.1: When user presses the button  , unit will dial the phone with Emergency No.1

Emergency No.2: When user presses the button  , unit will dial the phone with Emergency No.2

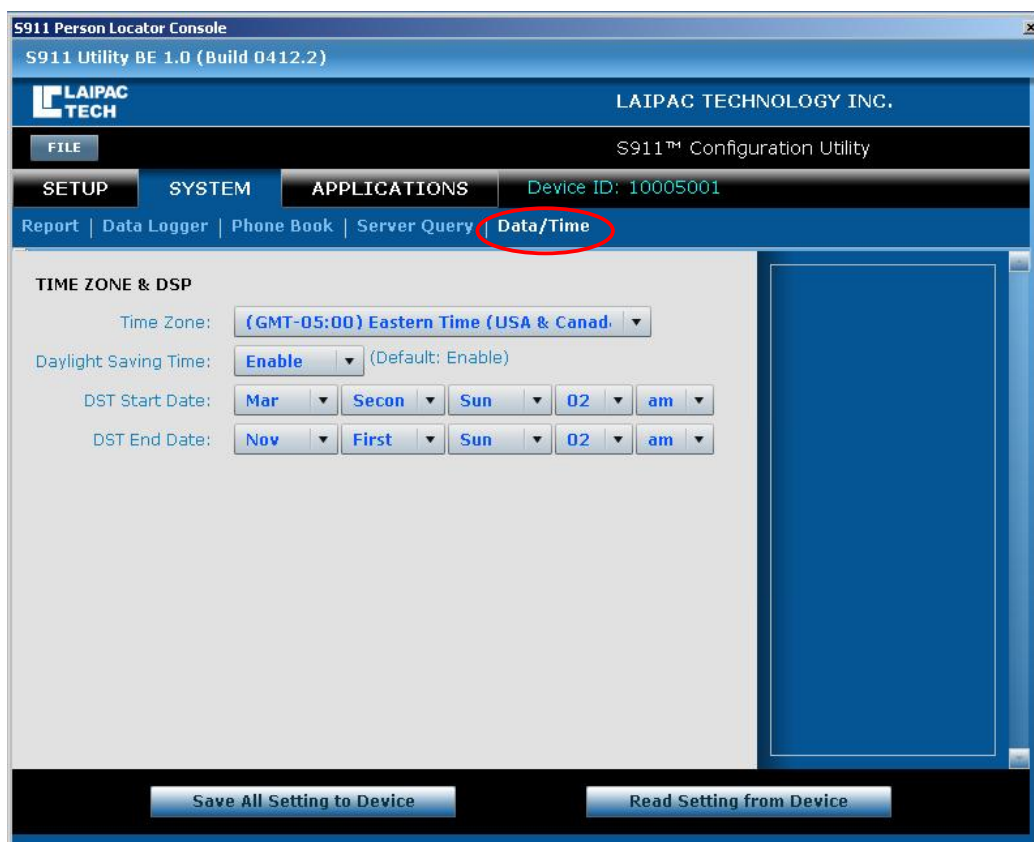
SMS Base Station: The SMS Base Station Number is used when the unit is operating in SMS mode. All of the waypoints and alert messages will be sent to the SMS Base Station Number. This number aslo can belong to a cell phone, an SMS modem or any SMS device.

**8.6 System → Server Query**

**Server Query:** Used as a GSM keep alive and tests the connection status of the S911 PL V4. This setting must be enabled first.

**Query Interval:** The actual interval in which the S911 PL V4 tests the connection between the GPRS server and itself. If there is no server response to the message the S911 PL V4 sends out, the unit will reset and try to resynchronize.

## 8.7 System → Data/Time



**Time Zone:** Use this to select your time zone so that the device knows your local time.

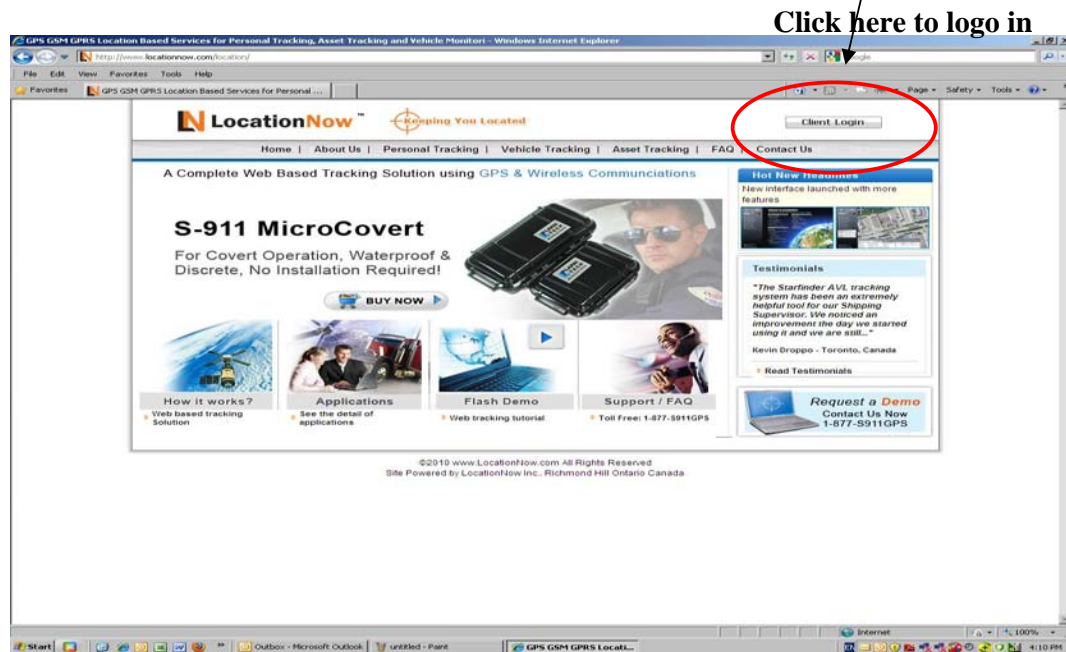
### Note:

The other setting items not mentioned here could be left as using their default setting at user's first try. For their detail definition, user can refer to S911 PL V4 user manual.

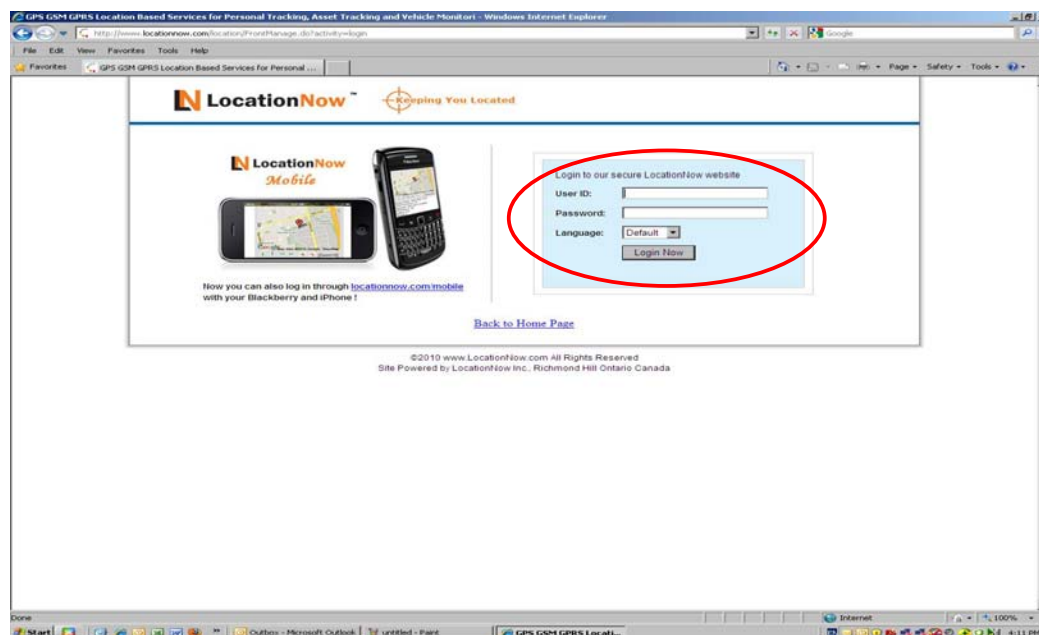
## 9. Go to LocationNow

Now, you can use your S911 V4 to access your location based service platform, such as Laipac's LocationNow, <http://www.locationnow.com/location/>

### 9.1 Logo in LocationNow



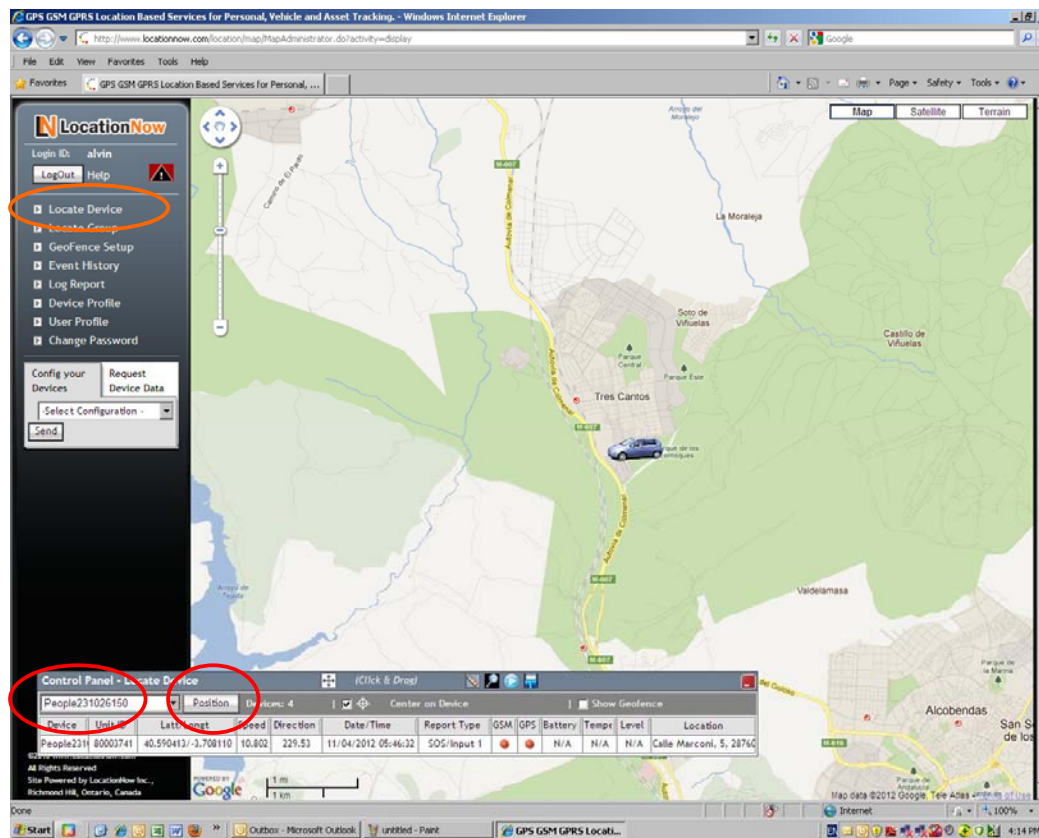
### Input your User name and Password





## 9.2 Request your unit's position

Locate device → Select Tracking Device → pick your unit from the pull down list  
→ Click “Position” to find your unit on the Map



## 10. Introduction to function buttons


H. Power On/Off 

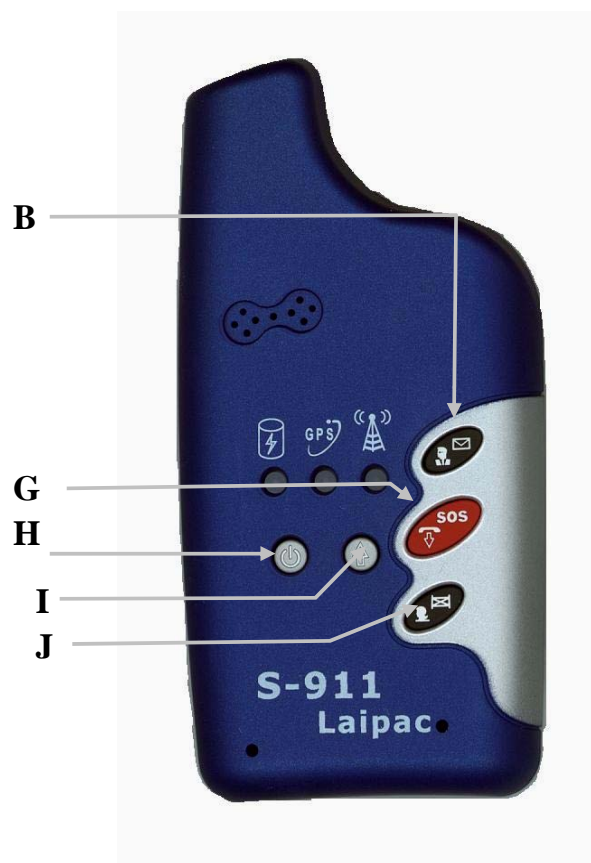
B. Button 1: Father Key 
























G. Button 2 

J. Button 3: Mother Key 

I. Shift- 

When  being pressed in conjunction with button 1, 2, or 3, the S-911 performs alternate operations associated with those combinations of buttons.

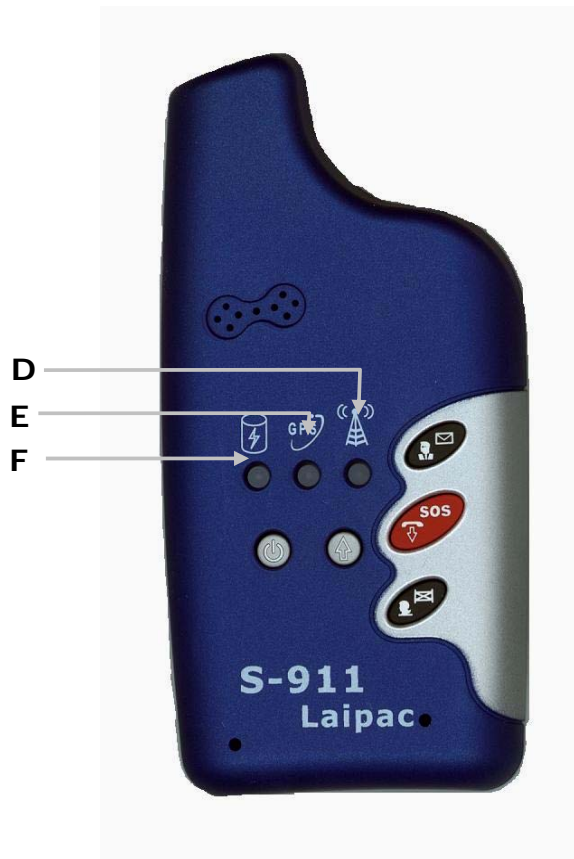


Button	Function	Description	Mode
	Power	Power on/off the unit hold  for 3 seconds	SMS GPRS
	Reset unit	Press these 2 keys together	SMS GPRS
Father Key 	Speed Dial	Press  to call emergency number 1	SMS GPRS
	*Increase Volume	During phone call, press this key To increase volume of speak	Phone call
Mother Key 	Speed Dial	Press  to call emergency number 2	SMS GPRS
	*Decrease Volume	During phone call, press this key To decrease volume of speak	Phone call
	Hang up	Answer an incoming call, press 	SMS GPRS
 		Press  followed by  to send an emergency report to assistance number	SMS GPRS
 		To set/clear the user Geo-Fence, press  followed by 	SMS GPRS
 		To send a text message with your position, press  followed by 	SMS
 		Send a position report to the control centre	GPRS

**Note:**

\*During phone call, to reduce the echo, user should set the volume of speaker properly.

## 11. LED indicator and unit's working status











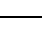
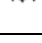
### D. Battery Charging LED Indication

When unit is under working condition, this red LED will be lighted on periodically




When unit is being charged, it should be solid on

### E. GPS LED Indication

### F. GSM/GPRS LED Indication

LED	Function	LED Color	Unit's working status
	Battery charging status	Solid Red	Battery is being charged until it reaches its maximum capacitance
	Battery charging status	*Off	Battery has been fully charged
	GPS Indication	Solid Green	Unit has got its valid position
	GPS Indication	Flashing Green	Unit is trying to locate its position
	GPS Indication	Solid Green with Red Flash	Unit is with Instance Geo-Fence enabled and has got its valid position
	GSM/GPRS Indication	Solid Red	No SIM card / Wrong frequency network / no GSM signal
	GSM/GPRS Indication	Flashing Red	Unit has registered to GSM network. It is able to work if under SMS mode.
	GSM/GPRS Indication	Flashing Green and Flashing Red	Attempting to connect to GPRS
	GSM/GPRS Indication	Solid Green with Red Flash	Connected to GPRS
	GSM/GPRS Indication	Off	GSM modem disabled

**\*Note:**

When unit is in its normal working condition and without any operation of its buttons for about 15 seconds, all LEDs will be turn off except  in order to save power. If user presses any of the buttons,  and  will be lighted on to indicate the unit's current working status.

