



MANUAL BOOK

Sensor faucet

Model: SH - F68

www.smarthome.com.vn



Mfr Code: 893604393HDF68

SmartHome Co., Ltd.

SENSOR FAUCET

AUTO FAUCET

Model: SH - F68

The high class house !

Thank you for choosing sensor faucet SH - F68 of SmartHome. For selecting SmartHome's products, you will enjoy the best warranty services and installation support from our technical experts.

This document contains useful information during installation process and product usage. Please read the instructions carefully and retain the manual in case of need.

**Warning**

Electric shock may cause injuries or death. Before installing, repairing or cleaning the device, you should check whether the device's power is disconnected.

You should request support from technical experts or Customer Contact Center to avoid electric related accidents.

You should comply with environmental regulations when discarding or recycling the device or its packing materials.

Copyright © 2013 SmartHome Co., Ltd. All rights reserved.

The sensor faucet is the product of SmartHome Company and has been registered regarding designs, utility solutions and quality certification. All violations such as copying designs and product ideas are subject to the current copyright laws of the Socialist Republic of Vietnam.

Safety information



Avoid electrical shock to the device. Avoid using voltage higher than that in the device's specifications.



Disconnect its power prior to installing, disassembling or repairing the device.



Do not clean the device with corrosive chemicals.



Do not store the device in high-temperature environment.



Do not disassemble the device if not necessary.



Warning

Comply with the safety information during the device's usage.

Contents

Introduction	04
1. General information	04
2. Product package includes	04
3. Components	06
4. Sensor range	06
5. Specifications	07
Installation	08
1. Installation with cold water supply	08
2. Installation with hot&cold water supply	12
Usage and maintenance	16
1. Adjustment	16
2. Maintenance during usage	17
3. Operation cycle	18
4. Cycle explanation	18
Troubleshooting	19

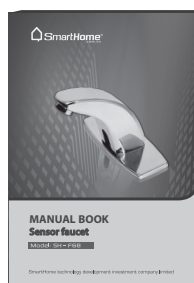
Introduction

1. General information

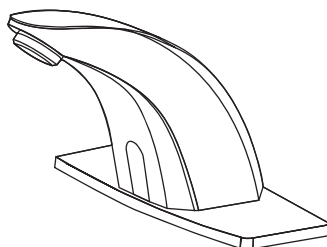
The sensor faucet operates with infrared sensor technology. When a user put his hand in the sensor range, the device will auto-flush water. The auto feature of the device brings the comforts, saves water and is absolutely safety for users.

2. Product package includes

Manual book

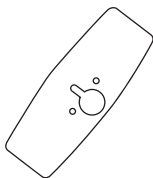


SH-F68 Smart Faucet

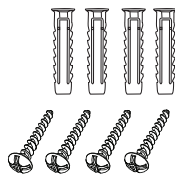


Accessories of SH-F68

Faucet base
(Qty: 1)



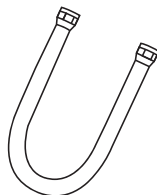
Set of screw and anchor (Qty: 4)



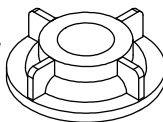
Pressure regulator
(Qty: 1)



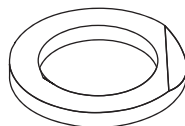
Water hose
(Qty: 2)



Fastening screw
(Qty: 1)



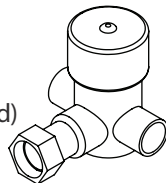
Rubber washer
(Qty: 1)



Battery
(Qty: 4)



Hot&cold mixing valve
(Optional - Not included)

**Notice**

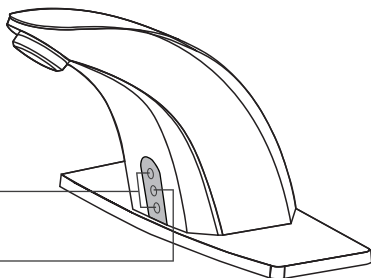
Please check to ensure that the accessories are attached to the device. Should there be any missing accessory, please contact the shop from which you purchased.

3. Components

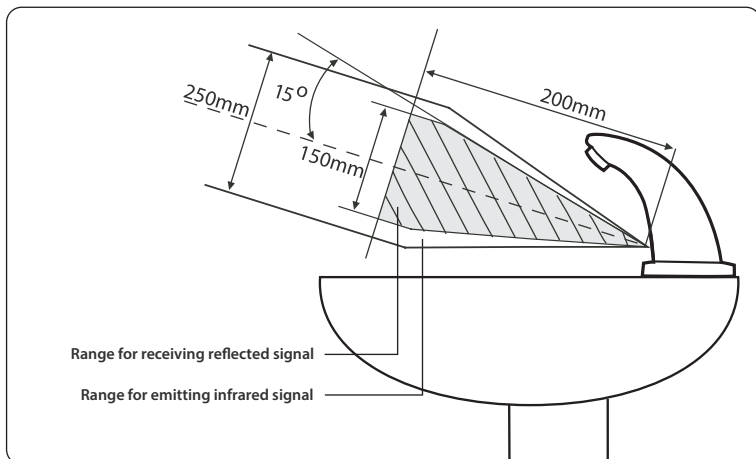
Infrared sensor component:

Emits and receives infrared signal reflected from user in sensor range, then transfers the data to the central processing unit.

Indicator light: Has notification function, the light turns on when detecting user in its sensor area.



4. Sensor range

**Note**

Sensor range can be adjusted from 15 to 20 cm under construction conditions and customer's need.

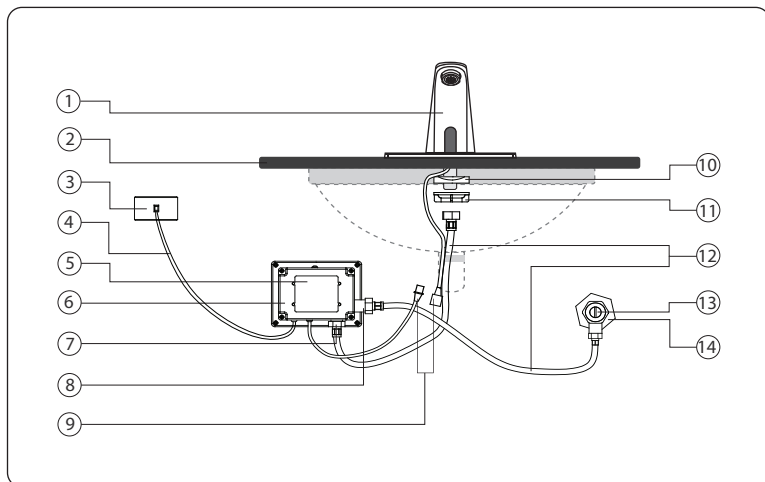
5. Specifications

Voltage	6V – 4 pin AA, Alkaline
	220VAC – 50/60Hz
Power consumption	Operating: Po = 6W
	Standby: Ps = 0.5W
Water supply pressure	0.7 – 7.6 Kgf/Cm2
Water temperature	5° - 50°C
Verification time	0.5 seconds in normal mode (AC power or battery)
	2.2 seconds in power-saving mode (battery) ^(*)
Breaking time	1 second
Water supply	Clean water without dregs
Sensor range	15cm - 20cm
Working temperature	60°C max
Dimensions (D x C x R)	Faucet body: 140 x 140 x 58 mm
	Control box: 120 x 80 x 90 mm
Faucet body weight	1kg

(*) Power-saving mode: When using battery source, after 60 minutes from the last use, the verification time increases from 0.5 seconds to 2.2 seconds. In power-saving mode, on detecting user, verification time reduces from 2.2 seconds to 0.5 seconds.

Introduction

1. Installation with cold water supply.



Note

1: Faucet body

2: Lavabo

3: Power source

4: Power Cord

5: Battery box

6: Control Box

7: Solenoid valve output

8: Solenoid valve input

9: Signal wire

10: Rubber washer

11: Fastening screw

12: Hose

13: Pressure regulator

14: Water supply

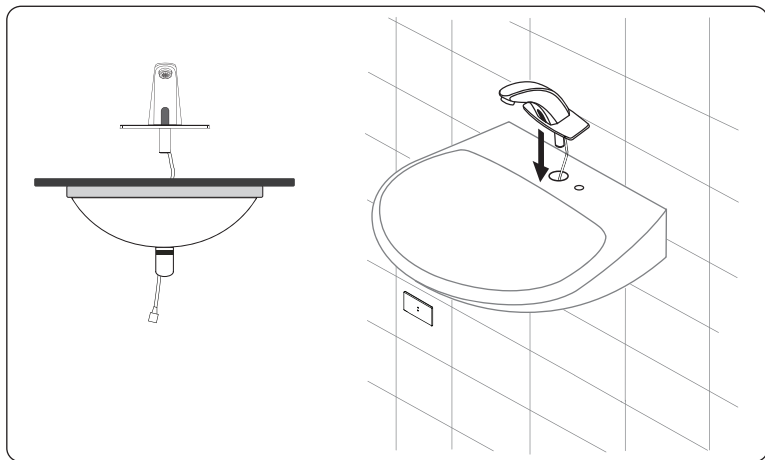


Notice

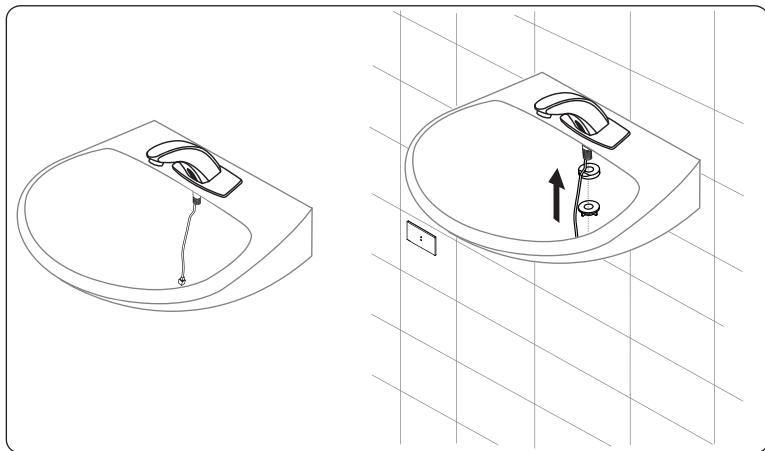
Please check actual distances and dimensions before installation.

Installation procedures

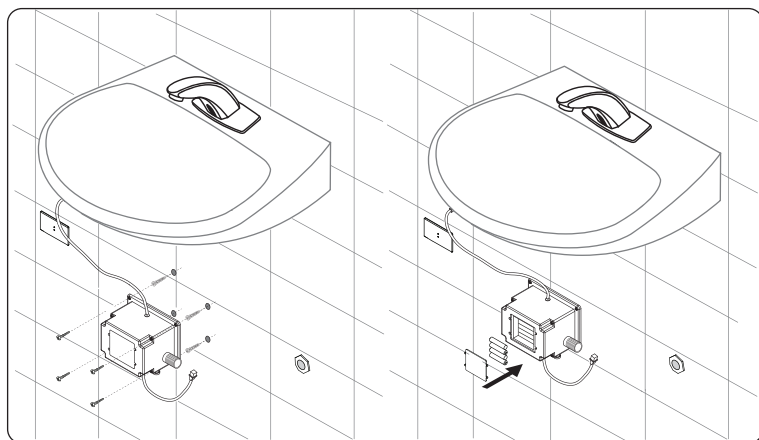
Step 1: Mount the Faucet body onto the Lavabo.



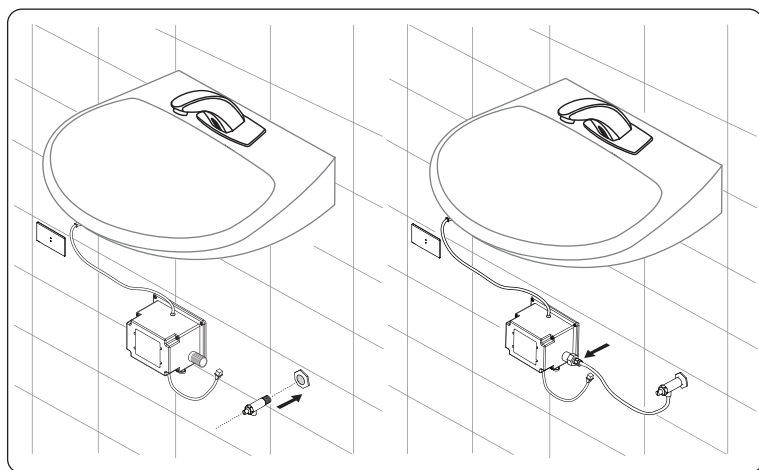
Step 2: Install the Rubber washer, Fastening screw onto the lavabo.



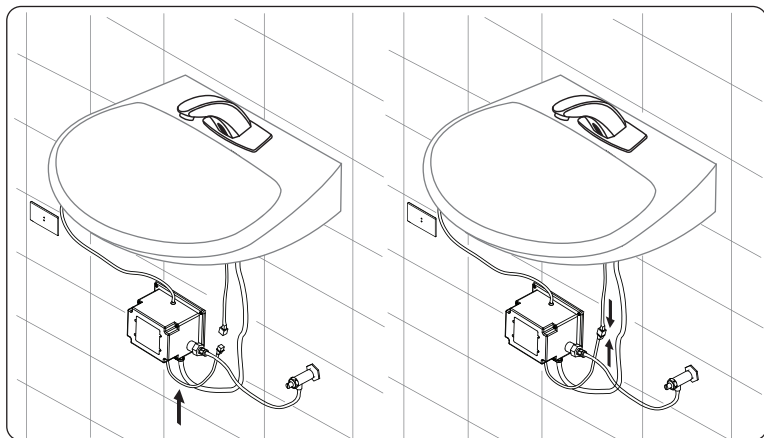
Step 3: Insert batteries into Control box, then mount Control box to the wall (the direction of control box should be exactly as shown in diagram).



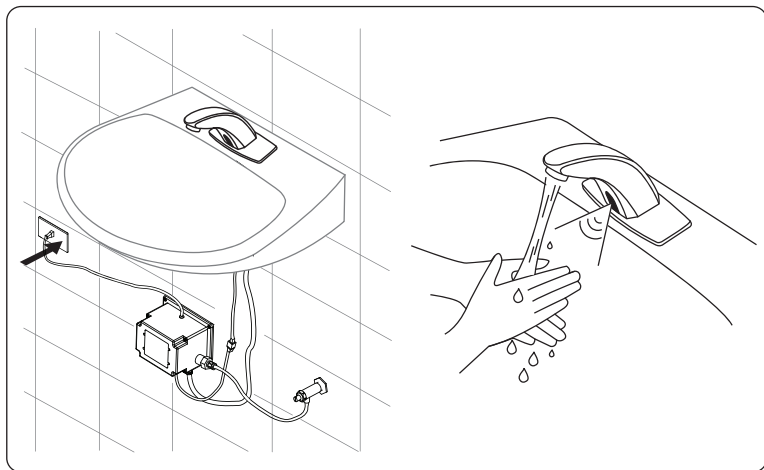
Step 4: Connect pressure regulator to water supply. Connect pressure regulator to Solenoid valve input with the Hose.



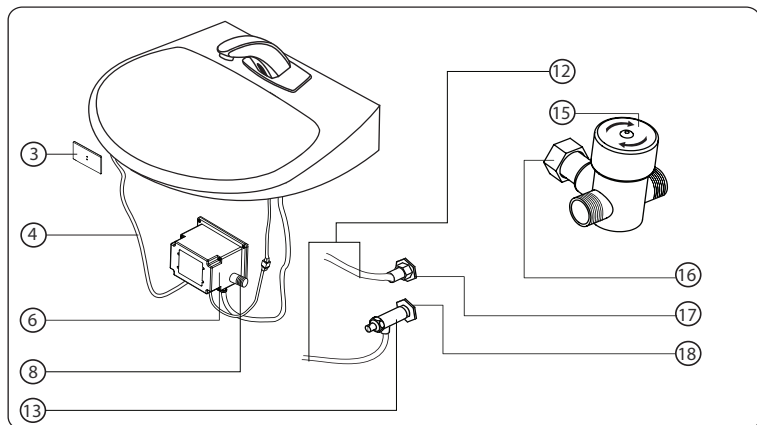
Step 5: Connect the Solenoid valve output to Faucet body with the Hose. Then connect the Signal wire.



Step 6: Connect Power cord to Power source.



2. Installation with hot&cold water supply.



The device supports hot&cold water supply with a hot/cold mixing valve.



Note

- | | |
|-------------------------|------------------------------|
| 3: Power source | 13: Pressure Regulator |
| 4: Power cord | 15: Hot-cold mixing valve |
| 6: Control Box | 16: Output to solenoid valve |
| 8: Solenoid valve input | 17: Hot water supply |
| 12: Hose | 18: Cold water supply |

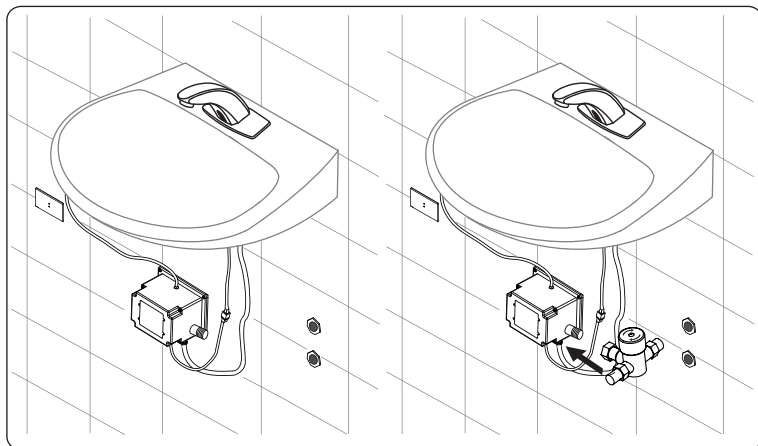


Notice

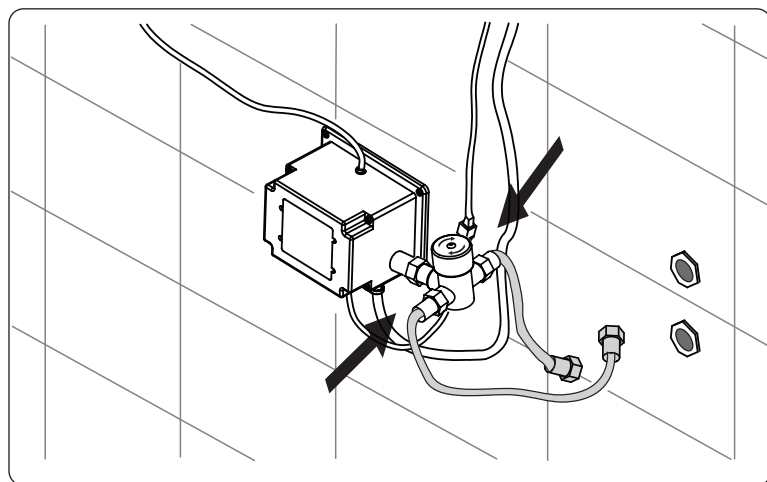
Instructions for Faucet body, Battery, Control box installations can be found on page 8, 9, 10.

Installation procedures

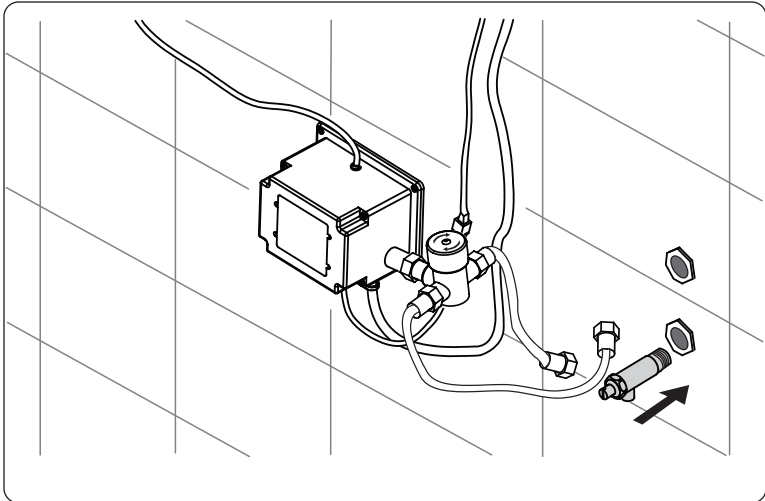
Step 1: Connect Hot/cold mixing valve to Solenoid valve input.



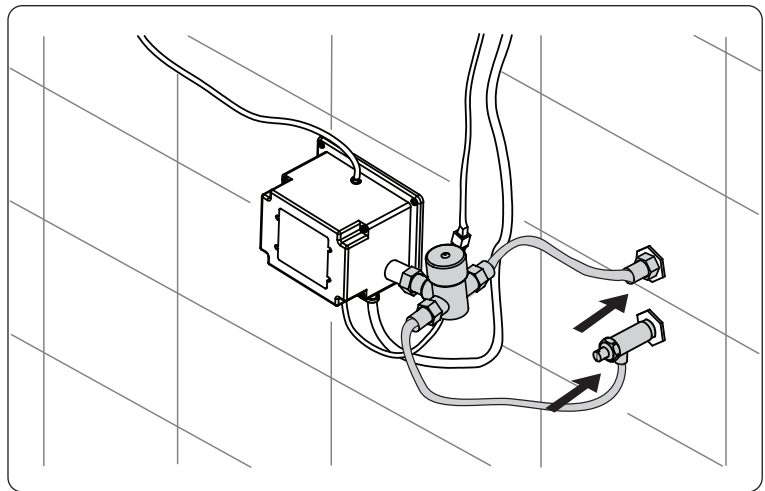
Step 2: Connect Hose to Hot/cold mixing valve.

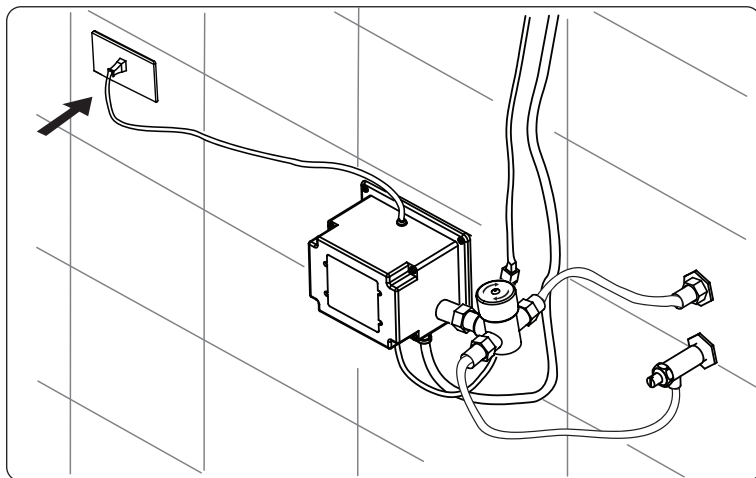


Step 3: Connect Pressure regulator to Cold water supply.



Step 4: Connect the Hoses to Relief valve and Hot water supply.



Step 5: Connect Power Cord to Power source.

Usage and maintenance

1. Adjustment.

Adjusting water supply

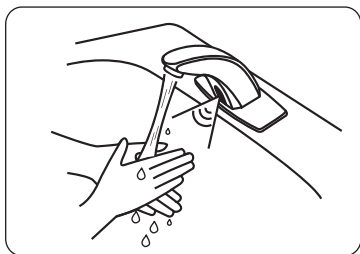
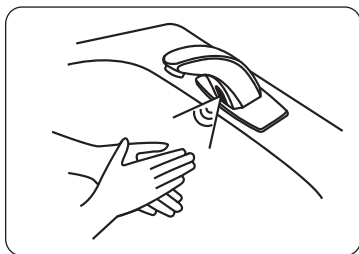
If the water supply pressure is too high or too low, you can adjust the pressure regulator which is connected to water supply source.

- Twist clockwise to lower the water supply pressure.
- Twist counter-clockwise to raise the water supply pressure.

Usage

The sensor faucet is designed and created on the base of infrared sensor principle, which ensures a safety usage. With the designed features, the sensor faucet will bring to its users a more comfortable and modern life.

When a user put his hand(s) in the sensor range for 0.5 seconds (verification time), water will automatically flush. After 1 second from hand(s) withdrawn, the water will stop.



If there is any user or obstacle in sensor range for 60 seconds, the faucet will automatically stop flushing water. The smart feature prevents water wasting due to faulty detection. Just by putting his hand in the sensor range, the user can continue his usage.

2. Maintenance during usage

Maintenance of Faucet body

After the period of usage and operation in the moist and dusty environment, the device cover may be foul due to these factors. Thus, it is necessary to clean the faucet body to keep the device clean.

Maintenance of Solenoid valve

After a period of usage, if the flushing water is weaken or leaked, it means the solenoid valve needs to be cleaned. This task should be done by technical experts.

Process of cleaning solenoid valve:

Step 1: Disconnect the device's power source, lock the water supply valve.

Step 2: Disassemble the water supply hose plugged to solenoid valve.

Step 3: Disassemble the filter of solenoid valve for cleaning.

Step 4: Let the water flush through the valve to get rid of dirt, from both directions of the valve alternatively. Keep the control box away from the water flush.

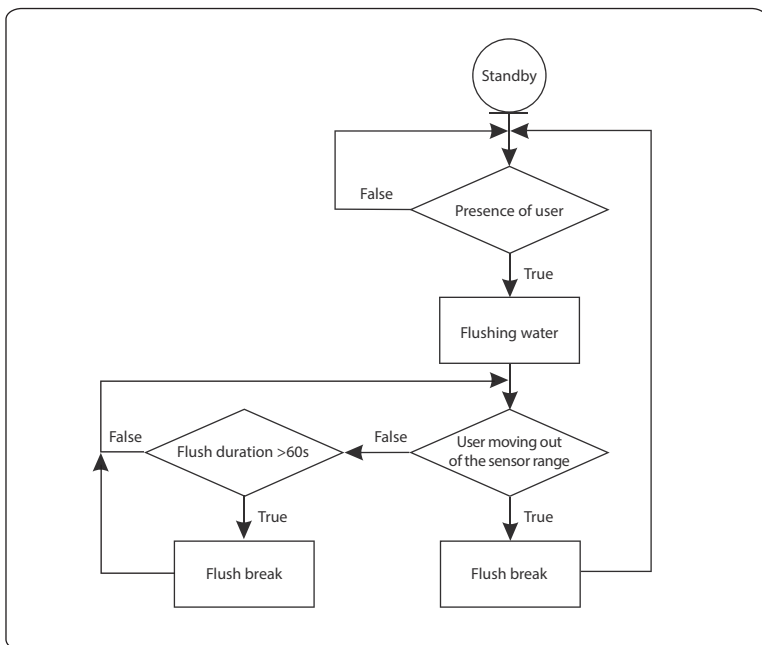
Step 5: Reassemble and check the device's operation.

In case of large object stuck in the valve which impossible to get rid of with above steps, the solenoid valve should be disassembled for cleaning. This case might require assistance from technical staffs.

Replacing batteries:

When the indicator light flashes every 2 seconds, it is time to replace batteries. The device uses 4 non-leaking Alkaline 1.5V-AA batteries such as Energizer, Duracell. Improper batteries may cause usage period reduction or malfunction to the device.

3. Operation Cycle



4. Cycle Explanation

When a user put his hands in the sensor range, water will automatically flush. After 1 second from hands withdrawn, the device will stop the flush. The 1-second period is added to guarantee the continuous working of the device during usage.

If the user put his hands in the sensor range in 60 seconds, the device will automatically stop the flush.

Just by putting his hand in the sensor range, the user can continue his usage. The smart feature prevents water wasting due to faulty detection.

Troubleshooting

Symptom 1

The device is not operating.

Checking

If water does not come out.

If the device is not powered.

If the faucet body is not connected to control system.

If the problem is not mentioned above.

Solutions

Check the water supply for the device.

Connect the device with AC power or battery.

Connect the wire from faucet body to control box.

Please contact Customer Contact Center or the local shop you purchased.

Symptom 2

The appliance keeps flushing without breaking.

Checking

If there is obstacle in sensor range of the device.

If the problem is not mentioned above.

Solutions

Take the obstacle away from sensor range.

Please contact Customer Contact Center or the local shop you purchased.

Symptom 3

Water comes out too much or too little

Checking

If the pressure regulator is adjusted improperly

If the pressure is adjusted properly

If the pressure regulator is adjusted properly but the water is still weak.

If the problem is not mentioned above.

Solutions

Adjust the pressure regulator to have the proper water pressure for your need.

Adjust the pressure regulator of the water supply of your entire restroom.

There might be obstacle or dirt in the device. Clean the solenoid valve as instructed in manual book.

Please contact Customer Contact Center or the local shop you purchased.

Symptom 4

Other problems

Checking

If water is leaking at the joints.

Solutions

Check the rubber washers, plumber's tape at those joints.

Before contacting Customer Contact Center, please double-check the information above to solve the problem.



Notice

If you need help, please contact the outlet where you made the purchase or our nearest Customer Care Center.

Please note down the product series before contacting Customer Contact Center since the warranty staff will require the information.

If there is any problem related to product, please contact Customer Contact Center:



Customer Care Center: 1900 6632