

PHOTOELECTRIC SMOKE ALARM MODEL: FFP9VHEL

Smoke Alarm User's Manual

Please read and save this manual

Photoelectric smoke alarms are generally more effective at detecting smoldering fires which can smolder for hours before bursting into flame. Sources of these fires may include cigarettes burning in couches or bedding.



MAIN FEATURES

- DC operated photoelectric type smoke alarm
- Photoelectric sensor for slow smoldering fires
- Insect proof
- Self-Test button
- Environmentally friendly non-radioactive technology
- High and stable sensitivity
- With quick fix mounting bracket for easy installation
- Fitting and battery tamper-resist feature
- LED operation indicator
- Extra loud alarm sound over 85 dB
- Low-battery and battery missing warning indicator
- Auto-reset when smoke clears

SPECIFICATION

- Model Number: FFP9VHEL
- Detection Type: Photoelectric Chamber
- Power Source: 9V DC Battery
- Standby Current: 15uA max
- Alarm Current: 700mA max
- Alarm Sound Level: 85 Decibels at 3 meters
- Operation Temperature: 5°C to 45°C
- Ambient Humidity: 10%-90%
- Sensitivity to Smoke: 3.0-6.0 %Obs /m

IMPORTANT SAFETY INFORMATION

1. This smoke alarm requires constant working 9-volt battery to operate properly. This smoke alarm WILL NOT work if DC power is not connected or has failed or been interrupted for any reason AND the battery is removed, drained or improperly connected. DO NOT use any other kind of battery except as specified. DO NOT connect this smoke alarm to any other type of smoke alarm or auxiliary device, except those listed in this manual.
2. The Test button accurately tests all smoke alarm functions. Do not use any other test method. Test smoke alarm weekly to ensure proper operation.
3. DO NOT remove or disconnect battery to quiet unwanted alarms. This will remove your protection. Open windows or fan the air around smoke alarm to silence it.
4. This smoke alarm may be installed by a licensed, qualified electrician. Observe and follow all local and national electrical and building codes for installation.
5. This smoke alarm is designed to be used inside a single unit only. In buildings with several units, each individual living unit should have its own smoke alarms. Do not install in non-residential buildings. This smoke alarm is not a substitute for a complete alarm system.

6. Install a smoke alarm in every room and on every level of the home. Smoke may not reach the smoke alarm for many reasons. For example, if a fire starts in a remote part of the home, on another level, in a chimney, wall, roof, or on the other side of a closed door, smoke may not reach the smoke alarm in time to alert household members. A smoke alarm will not promptly detect a fire except in the area or room in which it is installed.

7. Smoke alarms may not alert every household member every time. The alarm sound is loud in order to alert individuals to a potential danger. However, there may be limiting circumstances where a household member may not hear the alarm (i.e. outdoor or indoor noise, sound sleepers, drug or alcohol usage, the hard of hearing, etc.). If you suspect that this smoke alarm may not alert a household member, install and maintain specialty smoke alarms. Household member must hear the alarm's warning sound and quickly respond to it to reduce the risk of damage, injury, or death that may result from fire. If a household member is hearing impaired, install special smoke alarms with lights or vibrating devices to alert occupants.

8. Smoke alarms can only sound their alarms when they detect smoke. Smoke alarms detect combustion particles in the air. They do not sense heat, flame, or gas. This smoke alarm is designed to give audible warning of a developing fire. However, many fires are fast-burning, explosive, or intentional. Others are caused by carelessness or safety hazards. Smoke may not reach the smoke alarm QUICKLY ENOUGH to ensure safe escape.

9. Smoke alarms have limitations. This smoke alarm is not foolproof and is not warranted to protect lives or property from fire. Smoke alarms are not a substitute for insurance. Homeowners and renters should insure their lives and property. In addition, it is possible for the smoke alarm to fail at any time. For this reason, you must test the smoke alarm weekly and replace every 10 years.

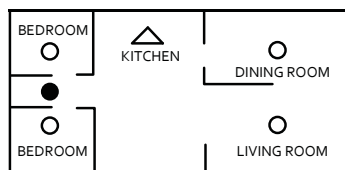
Note: For best protection, we recommend that you install a smoke alarm in every room.

SMOKE ALARM PLACEMENT

Typical single-story home

Install a smoke alarm on the ceiling or wall inside each bedroom and in the hallway outside each separate sleeping area. If a bedroom area hallway is more than 30 feet long, install a smoke alarm at each end.

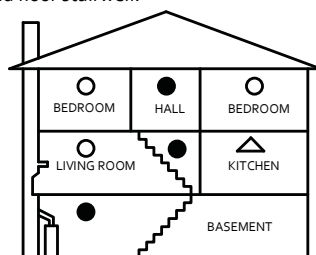
If there is a basement: Install a smoke alarm on the basement ceiling at the bottom of the stairwell.



SINGLE-STORY RESIDENCE, APARTMENT, MOBILE HOME

Typical Multi-story or split level home

Install a smoke alarm on the ceiling or wall inside each bedroom and in the hallway outside each separate sleeping area. If a bedroom area hallway is more than 30 feet long, install a smoke alarm at each end. Please install a smoke alarm on the top of a first-to-second floor stairwell.

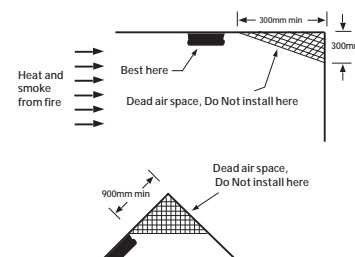


KEY:

- Minimum required smoke alarm locations
- Recommended additional smoke alarm locations
- △ Smoke alarms with hush features recommended for additional protection

IMPORTANT SMOKE ALARM PLACEMENT AND EXCEPTION INFORMATION

1. As close to the centre of the ceiling as possible or at least no closer than 300mm to any wall or corner.
2. Install a minimum of two smoke alarms in every home, no matter how small the home.
3. Install a smoke alarm in each room that is divided by a partial wall (either coming down from the ceiling at least 200mm (8 Inches), or coming up from the floor).
4. Install a smoke alarm in lived-in attics or attics which house electrical equipment like furnaces, air conditioners, or heaters.

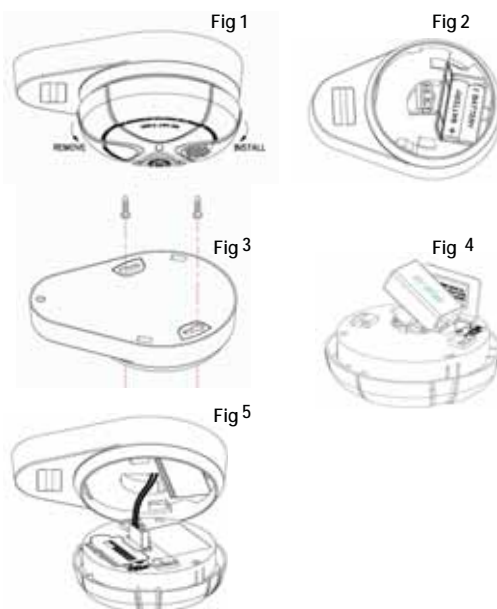


DO NOT INSTALL SMOKE ALARMS

1. Use a specialised smoke alarm with unwanted alarm control near appliances or areas where normal combustion regularly occurs (near furnaces, hot water heaters etc).
2. In areas with high humidity, like bathrooms or areas near dishwashers or washing machines. Install at least 3 Metres (10 Feet) away from these areas.
3. Near air returns or heating and cooling supply vents. Install at least 900mm (3 Feet) away from these areas. The air could blow smoke away from the detector, interrupting its alarm.
4. In rooms where temperatures may fall below 5°C or rise above 45°C
5. In extremely dusty, dirty, or insect-infested areas where loose particles interfere with smoke alarm operation.

WARNING: Incorrect orientation will result in a decrease in operational effectiveness.

HOW TO INSTALL THIS SMOKE ALARM



WARNING: Smoke alarm installation must be in accordance with the requirements of the national electrical code and any local codes that may apply.

1. Remove the mounting plate by turning anti-clockwise at the back of the smoke alarm. (See figure 1.)
2. Insert AA batteries into the battery compartment of the mounting plate. (See figure 2.) Ensure correct battery polarity is observed. Ensure the compartment cover is properly closed
3. Secure the mounting plate to the ceiling, with mounting screws. (See figure 3.)
4. Connect a new 9-volt battery to battery connector inside battery pocket of the detector.

- 4. Cont. Be sure battery is securely connected. Red LED may blink briefly when battery is installed. (See figure 4.)
 - 5. Close battery pocket door, snapping it into place.
 - 6. Connect the detector to the mounting plate by using the connecting plug (See figure 5.) Turn clockwise to lock the detector into the mounting plate. (See figure 1.)
 - 7. Push test button to test smoke alarm.
- See TESTING THE SMOKE ALARM.

OPERATING YOUR SMOKE ALARM

Once the smoke alarm has been installed A RED indicator light (LED) should flash approximately once a minute to indicate the battery is healthy and the unit is operating properly. If smoke is detected, the unit will emit a loud pulsating alarm and a RED indicator light (LED) will be flashing quickly until the air is clear.

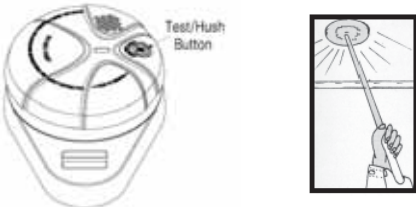
The "HUSH" feature can mute the detector if it has been advertently triggered by holding down the "TEST/HUSH" button for a few seconds.

The smoke alarm will be muted 10 minutes and then reset into normally mode after this period.

NOTE- If the smoke density increases during this time the smoke alarm will be triggered into alarm again.

TESTING THE SMOKE ALARM

- 1. Test each smoke alarm to be sure it is installed correctly and operating properly.
- 2. The push-to-test button accurately tests functions. Do not use an open flame to test this smoke alarm. You may ignite and damage the smoke alarm or your home.
- 3. Test smoke alarms weekly and upon returning from vacation or when no one has been in the household for several days.
- 4. Stand at arm's length from the smoke alarm when testing.



TEST ALL SMOKE ALARMS WEEKLY WITH THE FOLLOWING STEPS:

- 1. Firmly push the TEST button, and the smoke alarm will sound a loud beep and the escape light will turn on. The alarm will stop sounding and the light will turn off after releasing the TEST button.
- 2. If the smoke alarm does not sound or the light does not turn on, please retest the smoke alarm.

DANGER: If the alarm sounds, and smoke alarm is not being tested, the smoke alarm is sensing smoke.

THE SOUND OF THE ALARM HORN REQUIRES YOUR IMMEDIATE ATTENTION AND ACTION.

NUISANCE ALARMS

If there is a nuisance alarm simply press the test/hush button on the alarm to silence the unit for 10 minutes. If, when the alarm goes off, there is no sign of smoke, heat or noise to indicate that there is a fire, you should get your family into a safe place, before you start investigating. Check the house carefully in case there is a small fire smoldering somewhere. Check whether there is some source of smoke or fumes, for example cooking fumes being drawn past the smoke alarm by an extractor. If there are frequent nuisance/false alarms it may be necessary to re-locate the device away from the source of the fumes. If for some reason the alarm continues to sound without smoke or heat being present (due to insect infestation or contamination build-up for example) the units can be silenced by disconnecting the mains power and removing the unit. If cleaning the alarm does not correct the problem it can be returned to the manufacturer for repair or replacement.

HUSH FEATURE

This smoke alarm has a combined Test/Hush button to help you control nuisance false alarms.

- 1. To cancel a false alarm, press the Test/Hush button located on the cover. The alarm will automatically switch to a reduced sensitivity condition (very large levels of smoke from a nearby fire will override the Hush on the smoke alarms). This condition allows unwanted alarms to be silenced for a period of approximately 10 minutes.

The unit will flash the red light every 10 seconds (instead of the normal 40 seconds) to indicate the sensitivity is reduced.

On interconnected alarms, pressing the Test/Hush button on the one sensing smoke (i.e. the one with the red light flashing every second) will silence all alarms. Pressing the Hush Button on any other alarm will not cancel the alarm.

- 2. The unit will reset to normal sensitivity at the end of the silenced period. If additional silenced time is required, simply push the Test/Hush button again.

MAINTENANCE AND CLEANING

In addition to weekly testing, this smoke alarm requires yearly battery replacement and periodic cleaning to remove dust, dirt, and debris.

BATTERY REPLACEMENT

Replace battery at least once a year or immediately when the low battery signal sounds once a minute. Batteries should be replaced regularly as necessary. Replace the batteries of the escape light if not on when being tested.

WARNING: Do not use any other type of battery, other than as specified in this manual.
Do not use rechargeable batteries.

CAUTION: If the battery is incorrectly replaced, the smoke alarm will not operate and may cause damage.

- Please use high quality batteries to ensure long term performance.
- 1. Turn smoke alarm counterclockwise to detach it from the mounting plate.
 - 2. Gently pull down smoke alarm.
 - 3. Remove battery from the compartment.
 - 4. Insert a new 9-volt battery to connector. NOTE THE POLARITY OF CONNECTIONS. Ensure the metal tab is fully depressed when the battery has been fitted.
 - 5. Using the Push-to-Test button, test the smoke alarm to verify the 9V DC battery. See "TESTING THE SMOKE ALARM"
 - 6. Re-attach the smoke alarm to the mounting plate by turning smoke alarm clockwise until it snaps into place.
 - 7. Test the smoke alarm using "Test" button. See "TESTING THE SMOKE ALARM"

CHOOSING A REPLACEMENT BATTERY:

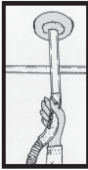
The unit requires one standard 9V battery. The following batteries are acceptable as replacements; Golden Power #6F22, Megaton #6F22; New Leader #6F22; Gold Peak #1604; Eveready #522, #1222 or equivalent quality models available from electrical or hardware stores.

CLEANING

Clean the smoke alarm at least once a month to remove dust, dirt, or debris. Using the soft brush or wand attachment to a vacuum cleaner, vacuum all sides and cover of smoke alarm. Be sure all the vents are free of debris. If necessary, use a damp cloth to clean smoke alarm cover.

IMPORTANT:

Do not attempt to remove the cover to clean inside the smoke alarm. This will void your warranty.



TROUBLESHOOTING

PROBLEM	SOLUTION
Smoke alarm does not sound when tested. NOTE: Push test button for at least five seconds while testing!	1. Remove smoke alarm from mounting plate and check that battery is properly attached to connector. 2. Clean the smoke alarm.
Smoke alarm beeps about once a minute.	Replace the battery. See battery replacement in the maintenance and cleaning section
Smoke alarm sounds unwanted alarms intermittently or when residents are cooking, taking showers, etc.	1. Clean smoke alarm. See cleaning in the maintenance and cleaning section 2. Move smoke alarm to a new location. See SMOKE ALARM PLACEMENT
The alarm sounds different than I'm used to. It starts and stops.	The alarm is operating correctly. This alarm features the internationally recognized horn signal for evacuation. The alarm sound pattern is 3 short beeps followed by a 2 second pause and then repeats.
The escape light is not on when being tested.	1. Remove smoke alarm from mounting plate and check if the batteries of the escape light are properly attached to connector. 2. Check if the smoke alarm is connected well with the mounting plate through the connecting plug.

WARNING: DO NOT disconnect battery to quiet an unwanted alarm. This will remove your protection. Fan the air or open a window to remove smoke or dust from the unit.

PRACTICE FIRE SAFETY

If the smoke alarm sounds its alarm, and you have not pushed the test button, this is a warning of a dangerous situation.

Your immediate response is necessary. To prepare for such occurrences, develop family escape plans, discuss them with all household members, and practice them regularly.

- 1. Expose everyone to the sound of a smoke alarm and explain what the sound means.
- 2. Determine two exits from each room and an escape route to the outside from each exit.
- 3. Teach all household members to touch the door and use an alternate exit if the door is hot. Instruct them not to open the door if the door is hot.
- 4. Teach household members to crawl along the floor to stay below dangerous smoke, fumes and gases.
- 5. Determine a safe meeting place for all members outside the building.

WHAT TO DO IN CASE OF FIRE

- 1. Do not panic, stay calm.
- 2. Leave the building as quickly as possible. Touch doors to feel if they are hot before opening them. Use an alternate exit if necessary. Crawl along the floor, and do not stop to collect anything.
- 3. Meet at a pre-arranged meeting place outside the building.
- 4. Call the fire department from outside the building.
- 5. Do not go back inside a burning building. Wait for the fire department to arrive.

These guidelines will assist you in the event of a fire. However, to reduce the chance that fires will start, practice fire safety rules and prevent hazardous situations.

THREE YEAR LIMITED WARRANTY

Master Distributors Pty Ltd warrants to the original consumer purchaser each new smoke alarm to be free from defects in material and workmanship under normal use and services for a period of three(3) years from the date of purchase. Master Distributors Pty Ltd agrees to repair or replace, at its option, any defective Smoke Alarm provided it is returned personally or by prepaid delivery with a copy of proof of purchase. Do not post. This warranty does not cover damage resulting from accidents, misuse or abuse or lack of reasonable care of the product. The purchaser's attention is drawn to rights it may have under the Trade Practices Act 1974 and similar state and territory legislation which cannot be excluded. Subject to those non-excluded rights and provisions and the above warranty, Master Distributors Pty Ltd, will not be liable for any injury to persons or damage to property or for any special direct or indirect or consequential loss or damage whatsoever and whether as a result of negligence or fault on the part of Master Distributors Pty Ltd. or its servants, agents, suppliers and contractors or otherwise arising out of or resulting from, whether directly or indirectly, the use, installation or maintenance of the smoke alarm and any warranties or representations are excluded unless given by Master Distributors Pty Ltd in writing.

The 9 volt battery included with this Smoke Alarm is excluded from the Master Distributors Pty Ltd, 3 year Limited Warranty. If this Smoke Alarm is installed for use by others, please leave this document or a copy for the end user.

