

● ● ● ● ● ● ● ●

ATMOTECH

PROFESSIONAL ATMOSPHERIC EFFECTS



LUNAR

STAGE HAZER

Order code: FOG08

USER MANUAL

● ● ● ● ● ● ● ●

WARNING

**FOR YOUR OWN SAFETY, PLEASE READ THIS USER MANUAL CAREFULLY
BEFORE YOUR INITIAL START-UP!**

**CAUTION!**

**Keep this equipment away from rain,
moisture and liquids.**

**SAFETY INSTRUCTIONS**

Every person involved with the installation, operation & maintenance of this equipment should:

- Be competent
- Follow the instructions of this manual



**CAUTION! TAKE CARE USING THIS EQUIPMENT!
HIGH VOLTAGE-RISK OF ELECTRIC SHOCK!!**



Before your initial start-up, please make sure that there is no damage caused during transportation. Should there be any, consult your dealer and do not use the equipment.

To maintain the equipment in good working condition and to ensure safe operation, it is necessary for the user to follow the safety instructions and warning notes written in this manual.

Please note that damages caused by user modifications to this equipment are not subject to warranty.

IMPORTANT:

The manufacturer will not accept liability for any resulting damages caused by the non-observance of this manual or any unauthorised modification to the equipment.

- Never let the power-cable come into contact with other cables. Handle the power-cable and all mains voltage connections with particular caution!
- Never remove warning or informative labels from the equipment.
- Do not open the equipment and do not modify the equipment.
- Only use the equipment indoors.
- Do not expose to flammable sources or gases.
- Always disconnect the power from the mains when equipment is not in use or before cleaning! Only handle the power-cable by the plug. Never pull out the plug by pulling the power-cable.
- Make sure that the available voltage is between 220v/240v.
- Make sure that the power-cable is never crimped or damaged. Check the equipment and the power-cable periodically.
- If the equipment is dropped or damaged, disconnect the mains power supply immediately. Have a qualified engineer inspect the equipment before operating again.
- If the equipment has been exposed to drastic temperature fluctuation (e.g. after transportation), do not switch it on immediately. The arising condensation might damage the equipment. Leave the equipment switched off until it has reached room temperature.
- If your product fails to function correctly, discontinue use immediately. Pack the unit securely (preferably in the original packing material), and return it to your Prolight dealer for service.
- Only use fuses of same type and rating.
- Repairs, servicing and power connection must only be carried out by a qualified technician. **THIS UNIT CONTAINS NO USER SERVICEABLE PARTS.**
- **WARRANTY:** One year from date of purchase.

OPERATING DETERMINATIONS

If this equipment is operated in any other way, than those described in this manual, the product may suffer damage and the warranty becomes void.

Incorrect operation may lead to danger e.g. short-circuit, burns, electric shocks etc.

Do not endanger your own safety and the safety of others!
Incorrect installation or use can cause serious damage to people and property.

Before filling the unit disconnect the mains. Never fill with hot liquids.

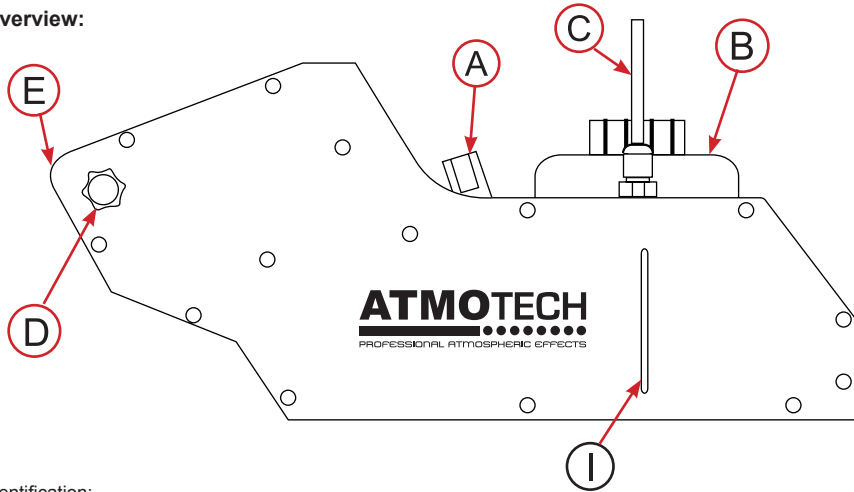
Only use high quality, water based smoke fluid recommended by the manufacturer. Other smoke fluids may cause clogging and void the warranty.

Always make sure there is sufficient smoke fluid in the tank. Operating this smoke machine without smoke fluid will cause damage to the pump as well as over heating of the heater.

Operate the unit only after you have familiarized yourself with its functions. Do not permit operation by persons not qualified for operating the unit and always drain the tank and use the original packaging if the unit is to be transported.

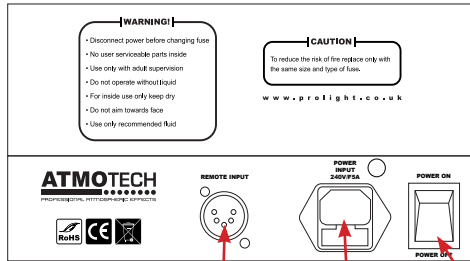
OVERVIEW

Overview:

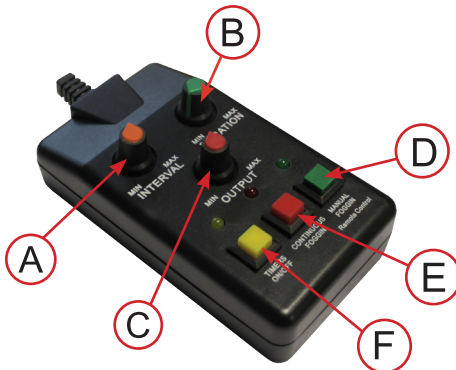


Identification:

- A, Carry handle
- B, Haze fluid container
- C, Fluid pipe
- D, Haze direction vent knob
- E, Haze output exit
- F, On/off switch
- G, Power input
- H, Timer remote input
- I, Fluid level indicator



Timer controller overview



Once the low fog machine is powered up and the haze machine has heated up to the correct temperature, the Green LED above the manual fogging button will illuminate indicating the machine is now ready for use.

Identification:

- A, Interval control
- B, Duration control
- C, Output control
- D, Manual fogging button
- E, Continuous fogging
- F, Timer on/off button

Timer remote operations:

This haze machine has a warm up time of approximately 4 minutes. Once the machine has warmed up, please follow the instructions below.

The timer remote allows the machine to be run from three different options;

Timer fogging option

To use this option, press the **“TIMER”** button so the Yellow LED is illuminated. You can now use the **“INTERVAL”**, **“DURATION”** and **“OUTPUT”** controls to set the times, length and amount of each fog burst.

To turn this option off, simply press the **“TIMER”** button again so the Yellow LED goes out.

Continuous fogging option

To use this option, press the **“CONTINUOUS”** button so the Red LED is illuminated. You can now adjust the amount of fog output by using the **“OUTPUT”** control.

To turn this option off, simply press the **“CONTINUOUS”** button so the Red LED goes out.

Manual fogging option

To use this option, simply press and hold the **“MANUAL”** fogging button until the desired amount of haze is emitted. Please note that this option will only function once the Green LED is illuminated.

STARTING OPERATION

The fluid tank of the unit needs to be filled with haze fluid before switching on. Always disconnect it from the mains supply as fluid could be spilled.

Only use quality haze fluids recommended by your dealer. We recommend high quality haze fluids. You must not use substances which are classified as **“DANGEROUS WORKING MATERIALS”** or **“FLAMMABLE FLUIDS”**.



If fluid should get inside the main housing, disconnect the unit from the mains immediately and consult a technician.

OPERATION

Switch the unit ON via the power switch. Connect the remote control to the control input socket. After the units warm up time the Green LED on the remote will light up, the unit is now ready for operation.


INSTALLATION

Install the unit in a well-ventilated area. Use in an insufficiently ventilated room can lead to the condensation of the haze fluid. The resulting slippery surface can cause accidents. Keep a minimum distance of 20cm around the unit.

Furthermore do not orientate the output nozzle directly in the direction of the audience's eyes. In order to create the best effect, there should be a distance between the unit and the audience of at least 1.5M.

Only install the haze machine on fire resistant, scratch resistant and water resistant surfaces.



Instructions:

1. Place the Haze Machine on a flat surface and remove the fog fluid tank cap.
2. Fill with  haze liquid. Any other types of fluid can damage the unit. When filled, place the cap on the fluid tank.
3. Firmly attach the timer remote cable to the proper input socket on the rear of the machine.

The unit can only be operated at floor level or sitting on any regular surface.

It is important that the haze does not shoot directly at any ones face. Therefore, do not point the output in a direction that will aim directly at a person.

Whatever the installation method you choose, do not allow the unit to have more than a 15 degree angle of inclination.

	<p>DANGER OF FIRE!</p> <p>When installing the unit, make sure there is no highly flammable material (decoration articles etc) within a minimum distance of 0.5M</p>	
---	--	--

The operator must always make sure that the safety-relating and machine-technical installations are approved by an expert before operation for the first time and after any further changes are made.

The operator has to make sure that the safety-relating and machine-technical installations are approved by an expert after every four years in the form of an acceptance test.

The operator has to make sure that the safety-relating and machine-technical installations are approved by a qualified person once a year.

	<p>DANGER TO LIFE!</p> <p>Before operation for the first time, the installation has to be approved by an expert!</p>	
---	---	--


CLEANING AND MAINTENANCE


DANGER TO LIFE!
 Disconnect from the mains before
 starting maintenance



We recommend a frequent cleaning of the unit. Please use a soft lint-free and moistened cloth. Never use alcohol or solvents!

Clean the output nozzle frequently from smoke fluid residues.

The  haze fluids we recommend are non-hazardous to the environment and can be disposed of via the sewage system.

There are no user serviceable parts inside this unit except for the fuse. Maintenance and service operations are only to be carried out by authorized dealers.

REPLACING THE FUSE

Only replace the fuse with a fuse of same type and rating.

Before replacing the fuse, disconnect from the mains.

Procedure:

- Step 1: Open the fuse holder on the rear panel with a suitable screwdriver.**
- Step 2: Remove the old fuse from the fuse holder,**
- Step 3: Install the new fuse in the fuse holder**
- Step 4: Replace the fuse holder in the housing.**

Should you need any spare parts, only use genuine parts.

If defective, please dispose of the unusable unit in accordance with the current legal regulations.

Should you have any further questions, please contact your dealer.



SPECIFICATIONS

TECHNICAL SPECIFICATIONS

Smoke output	2.500 cu.ft per minute
Warm up time	approx. 4 min
Tank capacity	2.2 L
Power consumption	500W
Power supply	240V
Dimensions	487 x 246 x 220mm
Weight	6Kgs



ATMOTECH



PROFESSIONAL ATMOSPHERIC EFFECTS

www.prolight.co.uk

