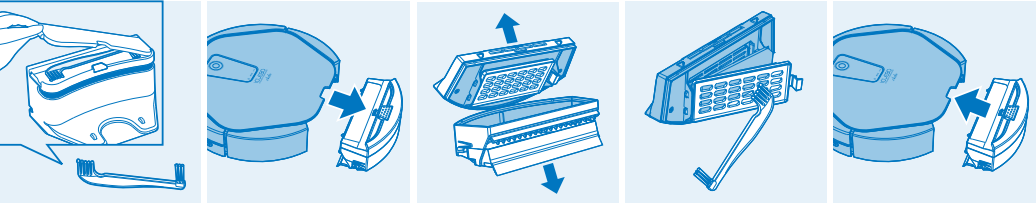
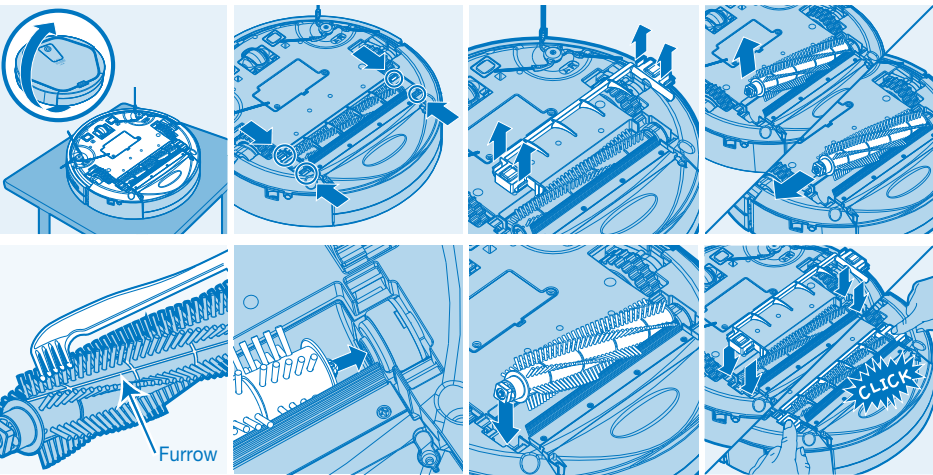


Product Care & Maintenance

1.Regularly empty the dust bin and replace the antibacterial filter



2. Cleaning Main brush

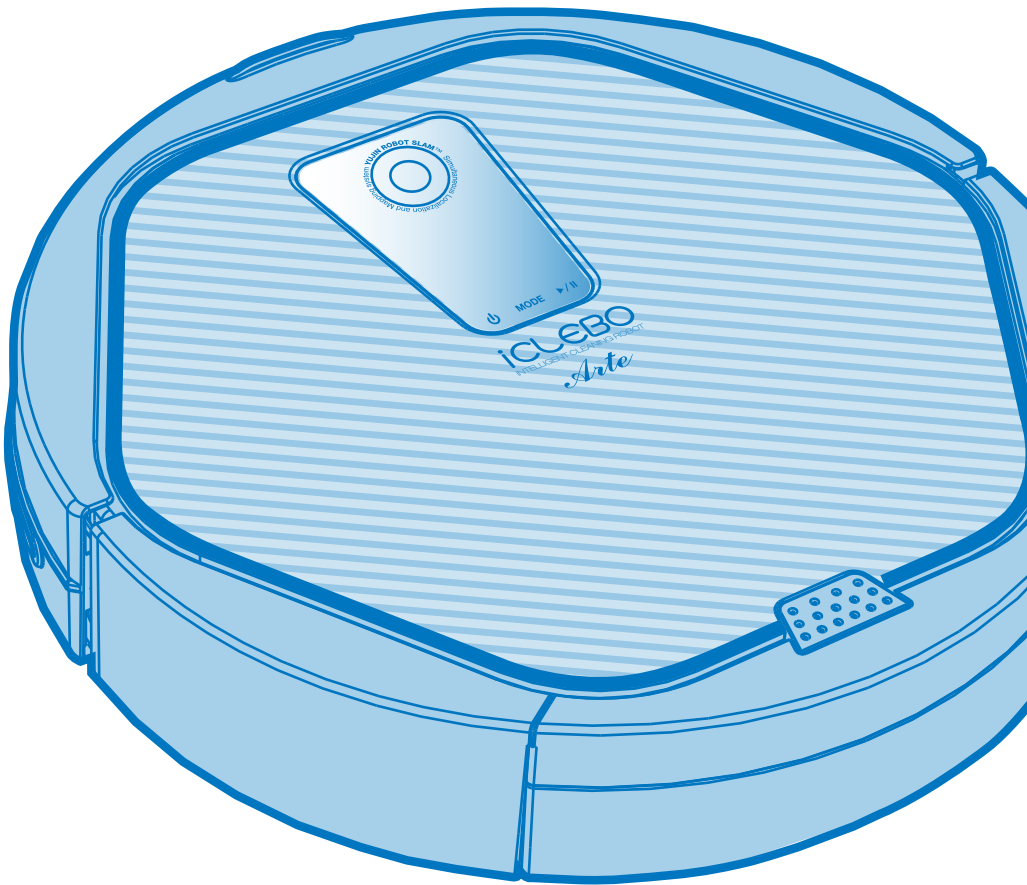


3. Check display & Solution

Check display	Cause	Solution
C 1	Lifted wheel	Move the robot cleaner to flat area.
C 2	Cannot detect floor	Move the robot cleaner to flat area in case the wheel is stuck on the threshold or porch.
C 3	Dust bin error	Dust bin is not properly assembled. : Install properly.
C 4	Wheel motor overload	Check if foreign substance such as hair or lint exists on the wheel. : Remove the foreign substance.
C 5	Brush motor overload	Check if foreign substance such as hair or lint exists on the main brush or side-brush. : Remove the foreign substance.
C 6	Suction motor overload	Clean filter, empty the dust bin.
C 7	Internal system error	Turn off the power switch of the robot cleaner then turn it on again.
C 8	Magnetic Encoder	Check the front wheel & magnetic sensor are clean & correctly inserted.

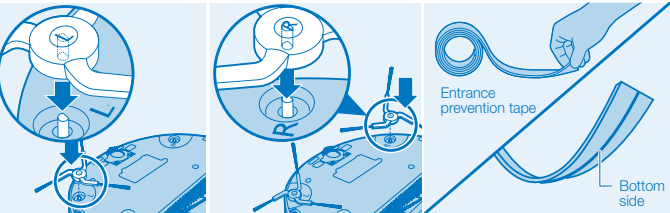


YCR-M05
Quick Guide
Vacuum Cleaning Robot iClebo Arte

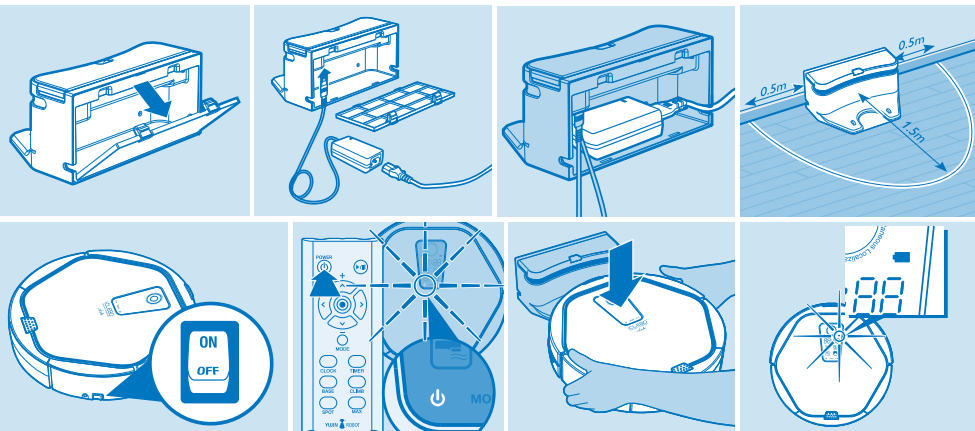


Installation of robot cleaner

1. Preparation of the vacuum cleaning robot



2. Installation of the charging station and charging



Usage of robot cleaner

1. Operation and timer settings for the vacuum cleaning robot

Classification	Start	Cleaning mode
Remote control	POWER → ▶/	POWER → MODE → ▶/ POWER → SPOT → ▶/ POWER → MAX → ▶/
Robot cleaner	POWER → ▶/	POWER → MODE → ▶/

2. Setting the clock

Classification	Time setting (Remote control is required to set the time)
Remote control	CLOCK → +, - → ENTER → +, - → ENTER
Window display	00:00 → 00:00 (Set "hour") → 00:00 (Set "minute")

- 1 Press the remote control "Clock" button to set the current time.
- 2 Use the +/- buttons to set the Hour, then press "Enter".
- 3 Use the +/- buttons to set the Minutes, then press "Enter".
- 4 Clock is now set.
- 5 Press the set button when correct time is displayed.

3. Timer Cleaning Function (RANDOM or AUTO mode)

※ Robot starts cleaning at the set time everyday, completes all the cleaning, and then returns to the charging station.

Classification	Setting the timer (Remote control is required to set the time)
Remote control	TIMER → +, - → ENTER → +, - → ENTER
Window display	00:00 → 00:00 (Set "hour") → 00:00 (Set "minute")
※ Before setting the Timer Cleaning start time, make sure to set the robot's clock to the current time. ※ Check the set time: press time button once Cancel the set time: press time button twice	

Climbing Function

- ※ "Climb" is set to "on" by default but can be deselected on the Remote Control in "Auto" or "Random" modes & also within "Max" or "Spot" cleaning. When "Climb" is set the robotic vacuum cleaner can cross obstacles up to a height of about 0.79 in. Sometimes the shape or surface of an obstacle may prevent the robot from climbing over it even when it is less than 0.79 in in height.
- ※ Deselect "Climb" when circumstances require cleaning without climbing over obstacles of 0.2 in or higher that need to be avoided (shag type rug for example) The robot will always climb up to 0.2 in in height.

※ Note: the following modes/functions can only be set using the Remote Control.

Set the mode	Cleaning mode	Explanation	Cleaning mode	Explanation
Remote control & cleaning robot	AUTO	Auto is the default cleaning mode and the robot uses 'Smart Navigation' to move in a systematic cleaning pattern to cover the entire cleaning area.	RANDOM	Randomly cleans during the set time (60 min, by default) In Random mode the cleaner often covers an area one or more times thereby increasing the thoroughness of cleaning. After selecting Random mode use the +/- and Set buttons on the Remote Control to enter the required duration of cleaning.
Only with remote control	SPOT	Zigzag part cleaning within 3.3 ft diameter	MAX	In "Max" Cleaning mode Iclebo Arte first operates as if in "Auto" mode where the robot uses its camera navigation to systematically clean the entire accessible area. After that the robot enters "Random" mode and continues cleaning as if to make doubly sure you will be happy with its work!

Status	Explanation	Status	Explanation
Mopping	The cleaning mode is automatically switched to Mopping mode once the mop plate is mounted on the bottom. It is recommended that "Climb" be deselected when in Mopping mode.	Door sill adjust	By using the "Climb" function the robotic vacuum cleaner's climbing ability will be increased from 5mm to cross obstacles up to a height of about 18mm. Sometimes the shape or surface of an obstacle may prevent the robot from climbing over it even when the obstacle is less than 18mm in height

※ If you wish to clean without climbing over obstacles of 0.2 in or higher because of the indoor environment(carpet, rug, or doorsill) set CLIMB button not to climb over obstacles over 0.2 in before usage.