

# OpenEye<sup>®</sup>

## 960H Recorder

### User Manual



## E-Series Max

OE-EMAX8

OE-EMAX16



OpenEye® OE-EMAX 960H E-Series Max Embedded Recorders  
User Manual

Manual Edition 32769AB – JULY 2014

©2014, OpenEye  
All Rights Reserved.

No part of this document may be reproduced in any means, electronic or mechanical, for any purpose, except as expressed in the Software License Agreement. OPENEYE shall not be liable for technical or editorial errors or omissions contained herein. The information in this document is subject to change without notice.

The information in this publication is provided “as is” without warranty of any kind. The entire risk arising out of the use of this information remains with recipient. In no event shall OPENEYE be liable for any direct, consequential, incidental, special, punitive, or other damages whatsoever (including without limitation, damages for loss of business profits, business interruption or loss of business information), even if OPENEYE has been advised of the possibility of such damages and whether in an action or contract or tort, including negligence.

This software and documentation are copyrighted. All other rights, including ownership of the software, are reserved to OPENEYE. OPENEYE and OpenEye, are registered trademarks of OPENEYE in the United States and elsewhere. All other brand and product names are trademarks or registered trademarks of the respective owners.

OpenEye products may include open source software that are subject to GNU GPL (General Public License), GNU LGPL (Lesser General Public License), and other similar licensing models.

If you would like a copy of the source code, as governed by the GPL and LGPL, please send, by registered mail, a certified check for \$15.00 to cover production and shipping costs. A CD with the applicable GPL and LGPL source code will be mailed to you. This offer is good for three years from the original date of purchase. Mail To: OpenEye ATTN Open Source Compliance, 23221 E Knox Ave, Liberty Lake WA 99019.

The following words and symbols mark special messages throughout this guide:

**Note** Text set off in this manner indicates information that is necessary for proper operation of the product.

**Tip** Text set off in this manner indicates information that may be helpful.

**Caution** Text set off in this manner indicates that failure to follow directions could result in damage to equipment or loss of information.

OPENEYE  
Liberty Lake, WA • U.S.A.

---

## IMPORTANT SAFEGUARDS

---

1. **Read Owner's Manual** – After unpacking this product, read the owner's manual carefully, and follow all the operating and other instructions.
2. **Power Sources** – This product should be operated only from the type of power source indicated on the label. If not sure of the type of power supply to your home or business, consult product dealer or local power company.
3. **Ventilation** – Slots and openings in the cabinet are provided for ventilation and to ensure reliable operation of the product and to protect it from overheating, and these openings must not be blocked or covered. The product should not be placed in a built-in installation such as a bookcase or rack unless proper ventilation is provided or OpenEye's instructions have been adhered to.
4. **Heat** – The product should be situated away from heat sources such as radiators, heat registers, stoves, or other products that produce heat.
5. **Water and Moisture** – Do not use this product near water. Do not exceed the humidity specifications for the product as detailed in the Appendix section in this manual.
6. **Cleaning** – Unplug this product from the wall outlet before cleaning. Do not use liquid cleaners or aerosol cleaners. Use a damp cloth for cleaning.
7. **Power Cord Protection** – Power-supply cords should not be routed so that they are likely to be walked on or pinched by items placed against them, paying particular attention to cords at plugs, receptacles, and the point where they exit the product.
8. **Overloading** – Do not overload wall outlets; extension cords, or integral convenience receptacles as this can result in a risk of fire or electrical shock.
9. **Object and Liquid Entry Points** – Never insert foreign objects into the recorder, other than the media types approved by OpenEye, as they may touch dangerous voltage points or short-out parts that could result in a fire or electrical shock. Never spill liquid of any kind on the product.
10. **Accessories** – Do not place this product on an unstable cart, stand, tripod, bracket, or table. The product may fall, causing serious personal injury and serious damage to the product.
11. **Disc Tray** – Keep fingers well clear of the disc tray as it is closing. Neglecting to do so may cause serious personal injury.
12. **Burden** – Do not place a heavy object on or step on the product. The object may fall, causing serious personal injury and serious damage to the product.
13. **Disc** – Do not use a cracked, deformed, or repaired disc. These discs are easily broken and may cause serious personal injury and product malfunction.
14. **Replaceable Batteries** – CAUTION: Risk of Risk of Explosion if Battery is replaced by an Incorrect Type. Dispose of Used Batteries According to the Instructions.
15. **Grounded Outlet** – This equipment shall be connected to a properly grounded outlet.
16. **Outlet Location** – This equipment must be installed within six feet of an easily accessible outlet.
17. **Damage Requiring Service** – Unplug the unit from the outlet and refer servicing to qualified service personnel under the following conditions:
  - When the power-supply cord or plug is damaged.
  - If liquid has been spilled, or objects have fallen into the unit.
  - If the unit has been exposed to rain or water.
  - If the unit does not operate normally by following the operating instructions. Adjust only those controls that are covered by the operating instructions as an improper

adjustment of other controls may result in damage and will often require extensive work by a qualified technician to restore the unit to its normal operation

- If the unit has been dropped or the enclosure has been damaged.
  - When the unit exhibits a distinct change in performance - this indicates a need for service.
18. **Service** – Do not attempt to service this product unless instructed to by an OpenEye engineer. Opening or removing covers may expose the user to dangerous voltage or other hazards. Refer all servicing to qualified personnel.
  19. **Replacement Parts** – When replacement parts are required, be sure the service technician has used replacement parts specified by OpenEye or have the same characteristics as the original part. Unauthorized substitutions may result in fire, electric shock or other hazards.
  20. **Safety Check** – Upon completion of any service or repairs to this unit, ask the service technician to perform safety checks to determine that the unit is in proper operating condition.

---

## NOTES ON HANDLING

---

Please retain the original shipping carton and/or packing materials supplied with this product. To ensure the integrity of this product when shipping or moving, repackage the unit as it was originally received from OpenEye.

Do not use volatile liquids, such as aerosol spray, near this product. Do not leave rubber or plastic objects in contact with this product for long periods of time. They will leave marks on the finish.

The top and rear panels of the unit may become warm after long periods of use. This is not a malfunction.

---

## NOTES ON LOCATING

---

Place the unit on a level surface. Do not use it on a shaky or unstable surface such as a wobbling table or inclined stand.

If this unit is placed next to a TV, radio, or VCR, the playback picture may become poor and the sound may be distorted. If this happens, place the recorder away from the TV, radio, or VCR.

---

## NOTES ON CLEANING

---

Use a soft dry cloth for cleaning.

For stubborn dirt, soak the cloth in a weak detergent solution, wring well and wipe. Use a dry cloth to wipe it dry. Do not use any type of solvent, such as thinner and benzene, as they may damage the surface of the recorder.

If using a chemical saturated cloth to clean the unit, follow that product's instructions.

---

## NOTES ON MAINTENANCE

---

This recorder is designed to last for long periods of time. To keep the recorder always operational we recommend regular inspection maintenance (cleaning parts or replacement). For details contact the nearest dealer.

---

## NOTES ON MOISTURE CONDENSATION

---

Moisture condensation could damage the recorder. Read the following information carefully. Moisture condensation might occur under the following circumstances:

- When this product is brought directly from a cool location to a warm location.
- When this product is moved to a hot and humid location from a cool location.
- When this product is moved to a cool and humid location from a warm location.
- When this product is used in a room where the temperature fluctuates.
- When this product is used near an air-conditioning unit vent.
- When this product is used in a humid place.

**Do not use the recorder when moisture condensation may occur.**

If the recorder is used in such a situation, it may damage discs and internal parts. Remove any CD discs, connect the power cord of the recorder to the wall outlet, turn on the recorder, and leave it for two to three hours. After two to three hours, the recorder will warm up and evaporate any moisture. Keep the recorder connected to the wall outlet and moisture will seldom occur.

---

## WARNING

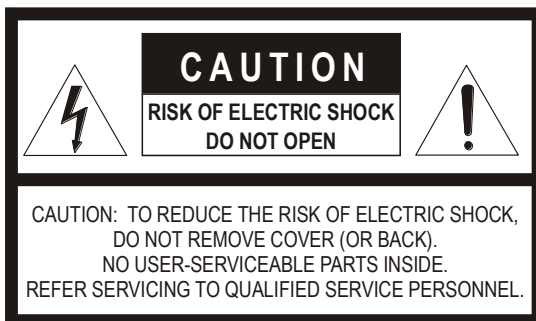
---

TO REDUCE THE RISK OF ELECTRICAL SHOCK, DO NOT EXPOSE THIS APPLIANCE TO RAIN OR MOISTURE.

DANGEROUS HIGH VOLTAGES ARE PRESENT INSIDE THE ENCLOSURE.

DO NOT OPEN THE CABINET.

REFER SERVICING TO QUALIFIED PERSONNEL ONLY.



---

## EXPLANATION OF GRAPHICAL SYMBOLS

---



The lightning flash with arrowhead symbol, within an equilateral triangle, is intended to alert the user to the presence of un-insulated "dangerous voltage" within the product enclosure that may be of sufficient magnitude to constitute a risk of electric shock to persons.

---

## FCC STATEMENT

---

This equipment has been tested and found to comply with the limits for a Class A digital device, pursuant to Part 15 of the FCC Rules. These limits are designed to provide reasonable protection against harmful interference when the equipment is operated in a commercial environment. This equipment generates, uses, and can radiate radio frequency energy and, if not installed and used in accordance with the instruction manual, may cause harmful interference to radio communications. Operation of this equipment in a residential area is likely to cause harmful interference in which case the user will be required to correct the interference at his own expense.

---

## EN 55022 Class A Notice

---

### WARNING

This is a class A product. In a domestic environment this product may cause radio interference in which case the user may be required to take adequate measures.

---

## Standard Warranty

---

OpenEye warrants all new products to be free from defects in workmanship and material under normal use **for a period of two years** after the date of purchase. Any defective product that falls under this warranty will, at OpenEye's discretion, be repaired or replaced at no additional charge. OpenEye may elect to replace defective products with new or factory reconditioned products of equal or greater value. Repairs made necessary by reason of misuse, alteration, normal wear, or accident are not covered under this warranty.

Exceptions to this are listed below:

- Three Years on all Digital Recorders
- Three years on all analog fixed cameras

All products shall be covered by a one year advance replacement warranty\*.

OpenEye will warrant all otherwise out of warranty replacement parts and repairs for 90 days from the date of OpenEye shipment.

The above warranty is the sole warranty made by OpenEye and is in lieu of all other warranties by OpenEye express and implied, including without limitation the warranties of merchantability and fitness for a particular purpose. Under no circumstances will OpenEye be liable for any consequential, incidental, special or exemplary damages arising out of or connected with the sale, delivery, use or performance of the product, even if OpenEye is apprised of the likelihood of such damages occurring. In no event shall OpenEye liability exceed the purchase price of the product.

This warranty gives you specific legal rights and you may also have other rights which vary from state to state or country to country.

*\*Requires corresponding security deposit. Advanced Replacement limited to components only outside of the USA and Canada.*

28574AG

For the most up to date information visit [www.openeye.net](http://www.openeye.net).



# TABLE OF CONTENTS

<b>Introduction.....</b>	<b>13</b>
Product Description .....	13
Features.....	14
USB Flash Drive Approved List .....	14
PTZ Compatibility List.....	15
Quick Start Instructions.....	16
Logging In for the First Time .....	16
<b>Installation.....</b>	<b>17</b>
Front Panel Controls .....	17
Rear Panel Connectors.....	18
16 Channel .....	18
8 Channel .....	19
Remote Control.....	20
Connection Guide .....	21
Connecting the Monitor.....	21
Video Inputs and Looping Outputs .....	21
Connecting to a Network .....	21
Connecting Audio .....	21
Connecting a PTZ Camera .....	22
Connecting to a Sensor Input .....	22
Connecting to a Relay Output.....	22
Turning on the Recorder .....	23
Using the Front Panel to Turn On/Off the Recorder.....	23
<b>Setup.....</b>	<b>25</b>
Setup Menus.....	25
Quick Setup .....	26
System.....	27
System Setup .....	27
Upgrade Firmware .....	28
Disk Setup .....	29
Format .....	29
Overwrite .....	30
Check .....	30
SMART Check.....	31
User Setup.....	32
Adding / Changing a User .....	33
Configuration .....	34
Shutdown.....	34

Camera.....	34
Camera Setup .....	34
Color Setup (Adjust) .....	35
PTZ Setup .....	35
Spot / Sequence Setup.....	36
Monitor Setup .....	37
Record .....	38
Recording Setup.....	38
Frame .....	38
Schedule .....	39
Holiday Setup.....	41
Audio .....	41
Emergency Recording.....	42
Using Emergency Recording.....	42
Motion/Event Setup .....	43
Input .....	43
Setting Up Motion Detection Recording.....	44
Sensor .....	45
Action .....	46
Alarm Monitor .....	47
Network.....	48
Network Setup .....	48
Serial Setup .....	49
E-mail Setup .....	50
ReportStar .....	51
Information.....	52
System Log View .....	52
Version View.....	52
Status View.....	53
<b>Operation.....</b>	<b>56</b>
Login.....	56
Default Administrator Log In .....	56
Live Display Mode .....	56
Channel Selection.....	56
Icons .....	57
Mouse-Over Menu .....	58
Instant Recording.....	58
Popup Menu .....	59
No Signal .....	59
No Permission .....	59
PTZ.....	60
PTZ Popup Menu .....	60
Create PTZ Preset Position.....	60
Search .....	61
Searching Recorded Data .....	61

Quick Search .....	61
Graphic Search.....	61
Quick Backup in Search Mode .....	62
Express Search .....	62
Event Search .....	62
Jump to First Saved Data .....	62
Jump to Last Saved Data .....	62
Daylight Saving Search .....	63
Search Popup Menu .....	63
Backup (Export) .....	64
Manual Export .....	64
Using the Backup Player.....	65
Controlling Backup Player .....	65
Setup and Save Functions.....	66
Play Back Backup Image.....	66
Screen Division Buttons.....	67
Upgrade Firmware at the Recorder .....	67
Save Settings.....	68
Save Settings .....	68
Import Settings.....	68
<b>Remote Software .....</b>	<b>69</b>
RADIUS Overview .....	69
Installing RADIUS on your PC .....	69
Web Viewer Overview.....	70
Connecting to a Recorder Using Web Viewer .....	71
Search Video Using Web Viewer.....	71
Performing a Basic Search .....	72
Status Search.....	72
Performing a Status Search .....	72
Clean Image .....	72
Print.....	73
Save .....	73
Digital Verifier Overview.....	74
Using the Digital Verifier .....	74
<b>Appendix .....</b>	<b>75</b>
Button Index.....	75
LED Status Indicators .....	75
Enter / Exit Buttons .....	75
Function Buttons.....	76
Numeric Buttons and Channels .....	76
Directional and Playback Control Buttons.....	77
Recorder Specifications .....	78

## Notes

# INTRODUCTION

## PRODUCT DESCRIPTION

---



OpenEye's E-Series recorders are powerful and affordable video management solutions, designed for easy installation and operation. Preconfigured for continuous recording and DDNS, with no additional setup required, the E-Series offers quick search, setup, and backup features. E-Series recorders use an embedded Linux operating system, which provides stability and protection from viruses.

OpenEye E-Series recorders are ready for fast and seamless integration within your existing IT infrastructure. These recorders are designed to offer unparalleled stability, security, and ease of use in each model. Your security investment has never been easier to maintain. Multiple users may connect through any network for simultaneous live viewing, and digital search. This powerful software enables users to establish recording schedules, create motion detection zones, and use PTZ controls on available attached video input devices. With the latest advancements in the E-Series firmware, searching and indexing your video archive is fast and easy.

The E-Series Max includes a DVD drive for optical media backup (CDs and DVDs) and full front panel control. The 16 channel model includes looping outputs for increased versatility for live display.

All OpenEye recorders come with free RADIUS remote management and viewing software allowing you to connect to any number of recorders from virtually anywhere using your PC or laptop. OpenEye's suite of applications allow you to remotely manage recorder settings and permissions, view live virtual multiplexed video from multiple recorders on multiple displays, monitor alarm and sensor events remotely, create custom maps of facilities, and search or backup recorded video.

# FEATURES

---

The E-Series Max includes the following features:

- DVD drive for optical media backup (CD or DVD)
- 8/16 composite video input connectors
- 16 looping video outputs (16ch model only)
- Compatible with color (NTSC or PAL) and B&W video sources
- Multiple search methods (Calendar, Event)
- Records up to 480 NTSC Images Per Second (IPS)
- Live real time video display (NTSC: 480 IPS / PAL: 400 IPS)
- Automatic termination (75 Ohm) on looping outputs
- Continuous recording with disk overwrite mode
- Continuous recording during backup, search, and remote access
- Unique motion recording configuration for each camera channel
- Custom motion detection areas for each camera channel
- Multiple recording modes (Manual / Schedule / Event)
- Audio (Mono) recording and playback
- 4 built-in sensor inputs (Normally Open or Normally Closed)
- 2 built-in relay outputs (Normally Open or Normally Closed)
- Remote access
- PTZ camera control

## USB FLASH DRIVE APPROVED LIST

---

These USB flash drives have been tested and approved to work with E-Series recorders. Other USB flash drives may also work with E-Series recorders but have not yet been tested.

<b>Manufacturer</b>	<b>Model</b>
SanDisk	Cruzer
Talent	Flash
Corsair	Voyager
Lexar	JumpDrive
Kingston	Traveler

# PTZ COMPATIBILITY LIST

---

OpenEye E-Series recorders support a wide selection of PTZ camera protocols:

OpenEye 500	ORX-1000
OpenEye 510	Pelco-D
OpenEye – Pelco D	Pelco-P
American Dynamics	PTC-400C
DynaColor	RS-485 DIRECT
D-Max	SCC-641
ERNITech	SCC-645A
FastraxII	SDM-100
Ganz-PT	SJ-3728R1
Honeywell MAXPRO	SK-P
Honeywell VCL	SK-S
Honeywell (GC-655P)	SPD-1600
Honeywell (HSD-250)	SRX-1008
Honeywell (HSD-251)	TBT-DOME
HISHARP	Vison-360
HSDN 251/230	Visiontech
KALATEL	WSD7425D
LG (LVC-A70X)	WV-CS854
LILIN	YOKO-CCTV

# QUICK START INSTRUCTIONS

---

1. Turn on the recorder. See the Turning on the Recorder section of this manual for more details.
2. Log in. The default password is **1234**.
3. Complete System Setup to set up the date, time and system ID. See the System section for more details.
4. Complete Disk Setup to set overwrite options and enable SMART Check. See the Disk Setup section for more details.
5. Complete User Setup to change the Admin password and add additional users. See the System > User Setup section for more details.
6. Complete Camera Setup for all attached cameras. See the Camera section for more detail.
7. Complete PTZ Setup for any attached Pan / Tilt / Zoom cameras. See the PTZ section for more details.
8. Create a recording schedule. See the Record section for more details.
9. Complete Sensor Setup to enable any external devices connected to sensor inputs or relay outputs. See the Record > Motion/Event section for more details.
10. Complete Motion/Event Setup to trigger recording on an event: motion, sensor, video loss. See the Motion/Event section for more details.

The recorder is now configured to record, search and playback video. See the Operation section in this manual for more information on using the recorder.

## LOGGING IN FOR THE FIRST TIME

---

Default administrative log in information:

**ID:** admin

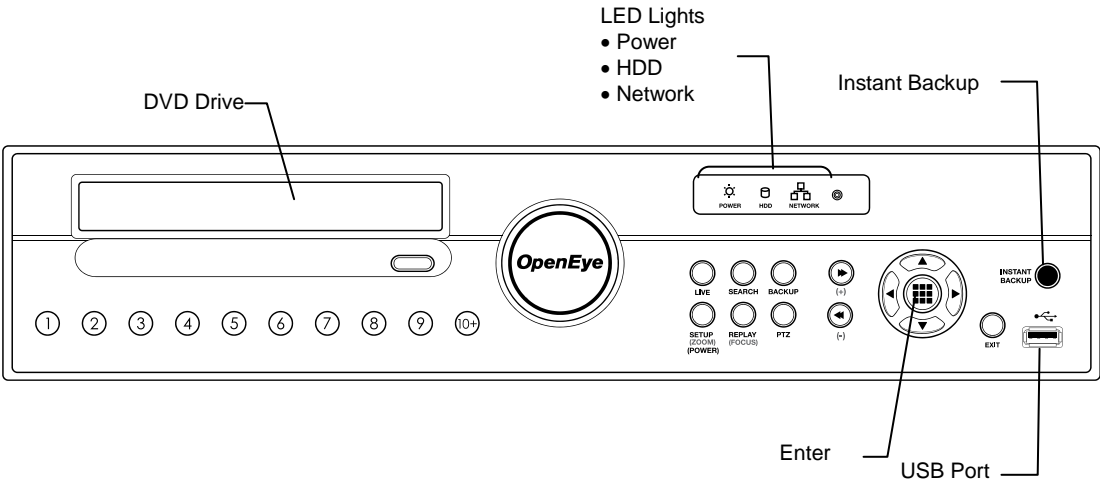
**Password:** 1234



# INSTALLATION

## FRONT PANEL CONTROLS

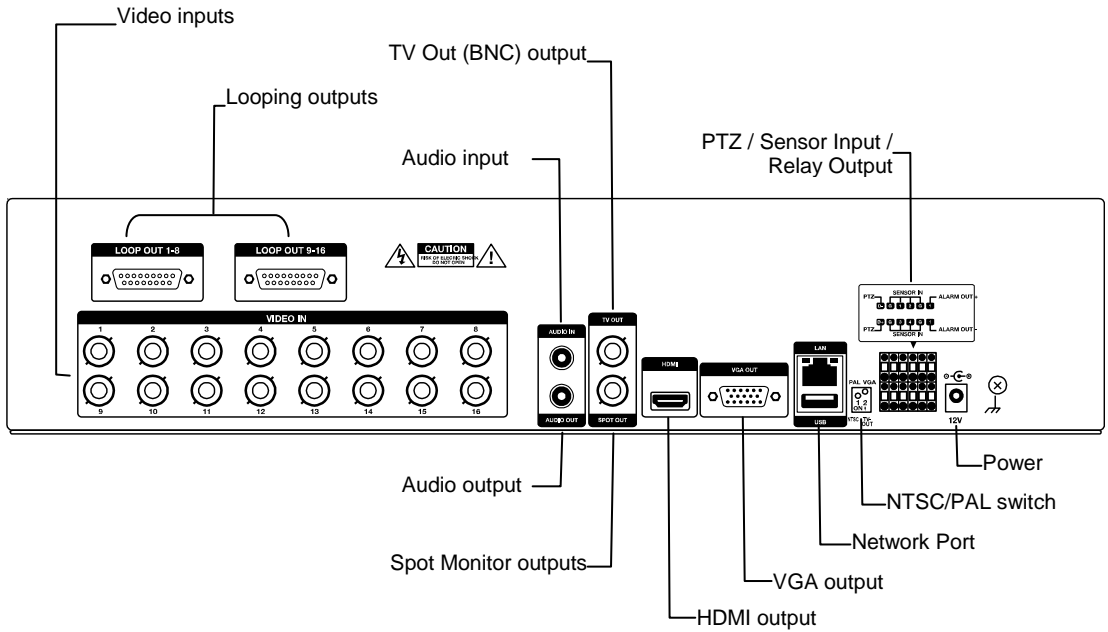
---



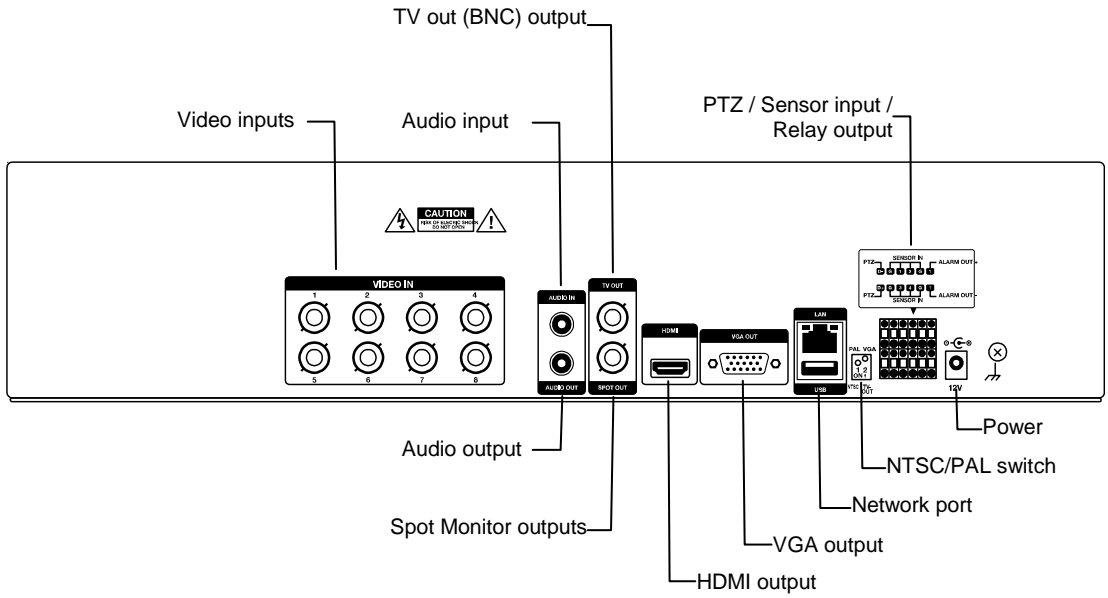
# REAR PANEL CONNECTORS

The rear panel of the recorder contains virtually all of the connectors you will be using. The diagram below shows the location and description of each connector.

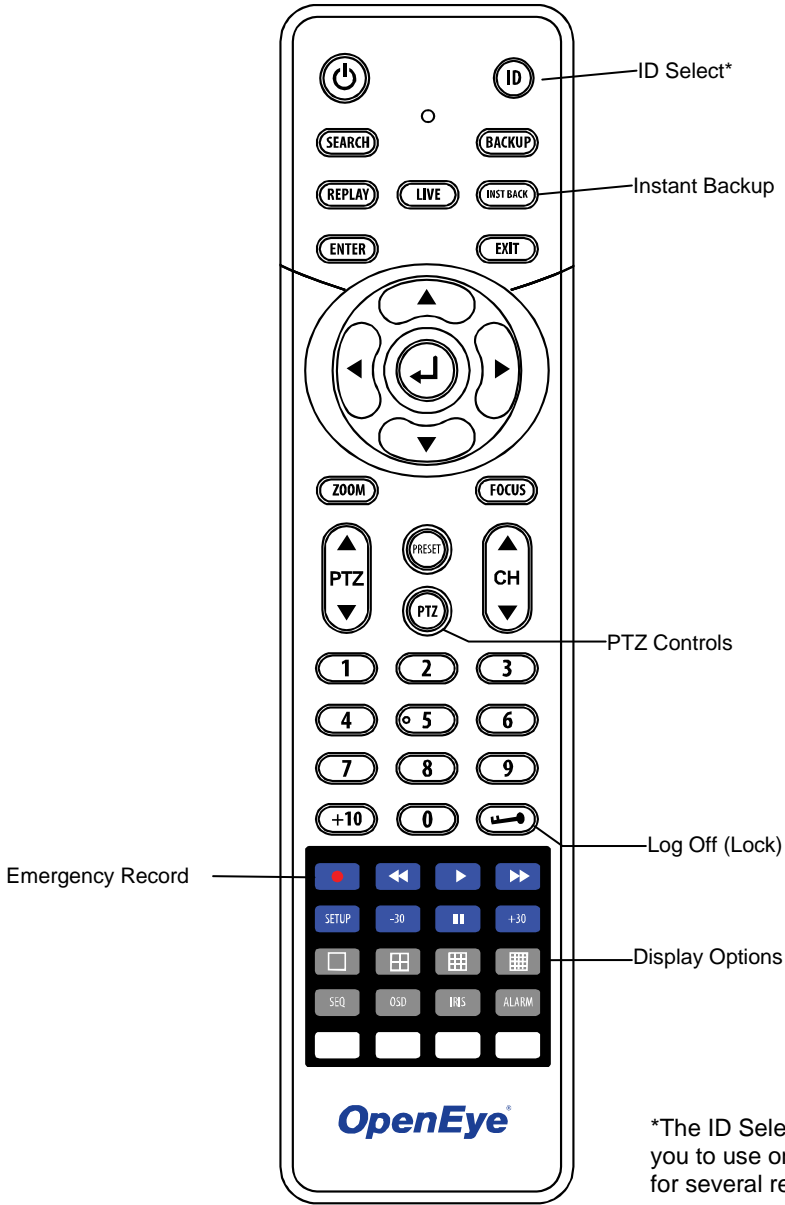
## 16 Channel



# 8 Channel



# REMOTE CONTROL



\*The ID Select button allows you to use one remote control for several recorders.

# CONNECTION GUIDE

---

## Connecting the Monitor

There are three available monitor outputs on E-Series Max recorders.

- HDMI output for HDMI monitor
- Composite Monitor output for CCTV monitor – BNC (TV OUT)
- Spot monitor output for CCTV monitor – BNC (Marked SPOT)
- VGA output for VGA monitor

## Video Inputs and Looping Outputs

The E-Series Max includes 8/16 BNC video inputs on the rear of the recorder.

## Connecting to a Network

Use the RJ45 jack on the rear of the recorder when connecting to a network.



## Connecting Audio

To record audio, connect the audio source to the connections on the audio port on the back of the recorder.

To listen to live or recorded audio connect the Audio Out Port to an amplified speaker system.

**Note** The audio output is a line level source which requires an amplified speaker system. The audio input can be from an amplified source or directly from an amplified microphone.

## Connecting a PTZ Camera

The RS485 connector can be used to control Pan / Tilt / Zoom (PTZ) cameras. See the PTZ camera manufacturer's manual for configuring the RS485 connection.

Connect RX-/TX- and RX+/TX+ of the control system to the TX-/RX- and TX+/RX+ (respectively) of the recorder.

**Note** Use the RS485 connector for external control systems such as a control keyboard.

## Connecting to a Sensor Input

To make connections on the Alarm Connector Strip: Press and hold the button and insert the wire into the hole below the button.

To disconnect the wire: Press and hold the button above the wire, and then pull it out.

### **Sensor In**

Use external devices to send a signal to the recorder when an event occurs. Mechanical or electrical switches can be wired to the Sensor In and Ground (G) connectors.

**Note** All connectors marked G are common. Connect the ground side of the sensor input and/or alarm output to the G connector.

## Connecting to a Relay Output

To make connections on the Alarm Connector Strip: Press and hold the button and insert the wire into the hole below the button.

To disconnect the wire: Press and hold the button above the wire, and then pull it out.

### **Alarm Out**

The recorder can activate external devices such as buzzers or lights. Connect the external device to the Alarm Out and Ground (G) connectors. See Sensor Setup in the manual for more details.

# TURNING ON THE RECORDER

---

1. Connect camera cables.
2. Connect a network cable and a monitor cable.
3. Connect the power cable to the recorder and wait until the main screen is displayed on the connected monitor; this process will take approximately two minutes.

**Tip** See the Connection Guide section for more details.

## Using the Front Panel to Turn On/Off the Recorder

To start the recorder:

- Press and hold the **SETUP** key on the front panel of the recorder until the lights start to flash.

To shutdown the recorder:

- Click **MENU** on the hover menu, click **SETUP**, and then click **SHUTDOWN**.  
**OR**
- Press and hold the **SETUP** key on the front panel of the recorder, log in when prompted and select **OK** to shut down.

**Note** Only authorized users can shut down the recorder.

Notes:



# SETUP

## SETUP MENUS

---



Use the setup menus to configure all of the recorder settings, schedule recording, networking and shutdown.

Connect a USB mouse to the recorder to navigate setup menus and recorder functions. See the Logging In for the First Time section if entering setup for the first time

If you do not have a USB mouse, you can press the SETUP key on the front of the recorder to enter the setup menus and log in. Use the ▲ and ▼ keys on the front of the recorder to navigate individual menus, and use the ◀ and ▶ keys to select a new setup menu.

**Note** The instructions in this manual direct you in the use of a mouse to navigate the setup and functions of the recorder. You may also use the keys on the front of the recorder.

# QUICK SETUP

---

The Quick Setup allows you to define global recording settings for an easy and custom recording schedule on the recorder.



**Global Resolution** – 352x240 / 704x240 / 704x480.

**Record Mode** – **CONTINUOUS / MOTION / SENSOR / CONTINUOUS+MOTION / CONTINUOUS+SENSOR / MOTION+SENSOR**

**Average Days to Record** – [The estimated days of recording determined by resolution, **IPS** (Images Per Second), **PICTURE QUALITY**, and available storage size]

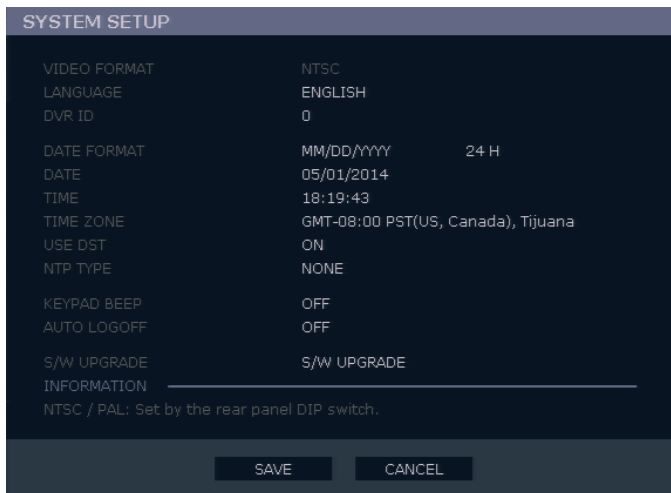
**IPS Per Channel** – 1 ~ 30 [Maximum varies with resolution]

**Picture Quality** – **LOW / NORMAL / HIGH / HIGHEST**

# SYSTEM

---

## System Setup



1. To enter System Setup, click **MENU** on the hover menu, and then click **SETUP**.
2. Click **SYSTEM**, and then click **SYSTEM SETUP**.
3. Click **SAVE** to save your updates.

**Video Format - NTSC / PAL**, Display only.

**Tip** Use the PAL/NTSC switch on the back of the recorder to change the setting.

**Language - ENGLISH / SPANISH / FRENCH** [User Selectable].

**DVR ID** - Required for the operation of multiple units when using a PTZ keyboard joy stick. Each system must have a unique ID to function properly.

**Date Format - US (MM-DD-YYYY) / EURO (DD-MM-YYYY) / ASIA (YYYY-MM-DD)** – [User Selectable].

**Date** – Click the **DATE**, and then click the values to adjust. Click **SAVE** when you are finished.

**Time** – Click the **TIME** and then click the values to adjust. Click **SAVE** when you are finished.

**Time Zone** - Click the **TIME ZONE**, and then select your desired Time Zone. Click **OK** to save.

**Note** The date and time must be set manually; changing the time zone will not automatically change the Time/Date display.

## System Setup Continued

**Use DST** – After completing the Time Zone setup, click the **USE DST** value (**ON** or **OFF**) to enable or disable Daylight Saving Time.

**NTP Type** – Click **NTP TYPE** to enable or disable a Network Time Protocol. In the NTP Type window, enable **NTP SERVER**, and then type your desired **NTP Server URL**. Click **SYNC NOW**, and then click **OK**.

**Keypad Beep** - Enables or disables audible keypad touch confirmation. (**ON / OFF**)

**Auto Log Off** – This feature will close the Setup Menu after a predetermined period of inactivity.(1 ~ 10 min, **OFF**).

**S/W Upgrade** – Start firmware upgrade from selected media (**USB** or **CD/DVD**).

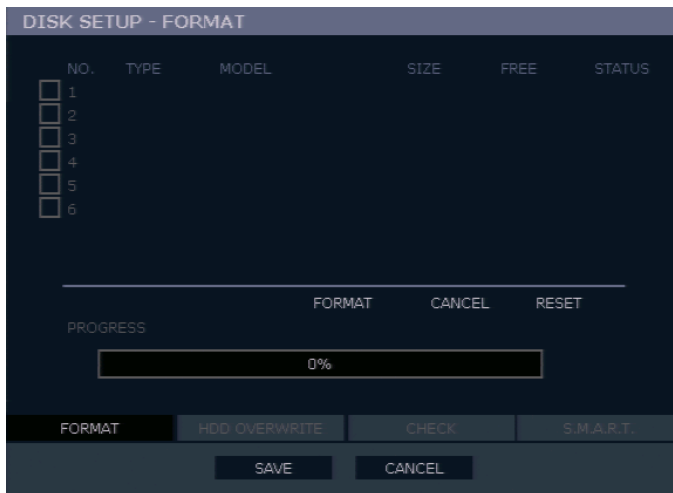
## Upgrade Firmware

1. Click **MENU** on the hover menu and select **SETUP**.
2. Click **SYSTEM**, and then click **SYSTEM SETUP**.
3. Click **S/W UPGRADE** to open the **UPGRADE FIRMWARE** window.
4. Insert the CD/DVD or connect your USB device.
5. Click **SCAN**.
6. Click **OK** to start the upgrade.

# Disk Setup

## Format

Shows installed Hard Disk Drives and the status of other attached storage devices.



To format a Hard Drive or USB device, select the appropriate device, click **FORMAT**, and then click **YES**.

**Tip** Refer to the list of Approved USB Flash Drives in the Introduction of this manual.

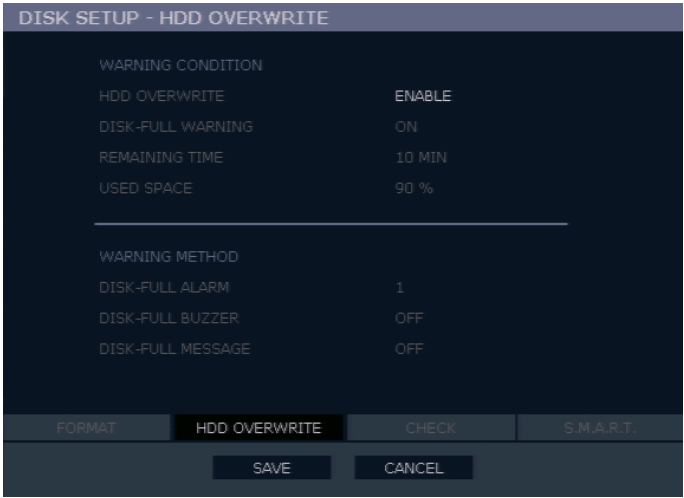
To refresh the list of connected USB devices, click **RESET**.

**Caution** All USB devices must be formatted as FAT32 before using with the recorder.

**Note** When formatting a drive, all video and other data stored on that drive will be permanently erased and cannot be recovered.

# Overwrite

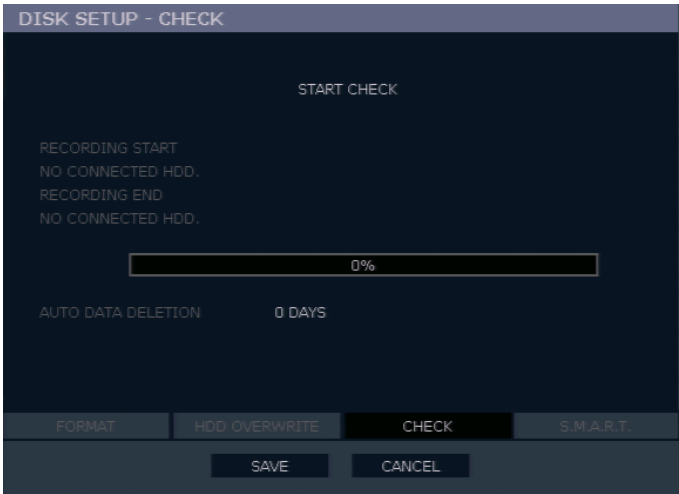
Sets options for overwriting data when the Hard Disk Drive becomes full.



- Enable **HDD OVERWRITE** to allow the recorder to write over previously recorded data, starting with the oldest date, when the HDD is full. If set to **DISABLE** the recorder will not record any new data once the HDD becomes full.
- Enable a **DISK FULL WARNING** for notification when the HDD becomes full and HDD Overwrite is disabled.

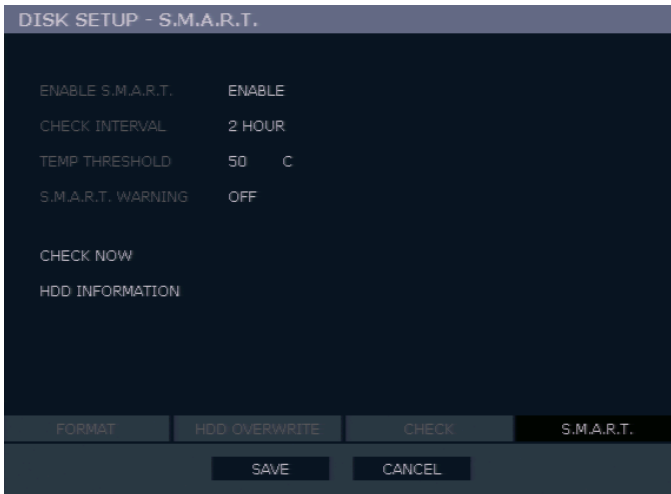
# Check

Checks the HDD for errors or failure.



## SMART Check

S.M.A.R.T. = Self Monitoring Analysis & Reporting Technology.  
Enable SMART Check to detect signs of HDD failure.



1. Set **ENABLE S.M.A.R.T.** to **ENABLE** or **DISABLE**.
2. Set a **CHECK INTERVAL** between 1 and 24 hours.
3. Define a **TEMP THRESHOLD** and select Celsius or Fahrenheit.

**Note** The recommended upper optimum operating temperature for the HDD is between 104° F to 122° F (40° C to 50° C).

4. Select a **S.M.A.R.T. WARNING** to be activated when the HDD reaches the defined threshold.
5. Click **SAVE** to save your settings.

**Tip** Select **HDD INFORMATION** and press ENTER to view the current HDD and USB drive information.

# User Setup

Use the User Setup to Add or Delete users.

USER SETUP			
	USER		
1	admin	ADD/CHANGE	DEL
2	NONE	ADD/CHANGE	DEL
3	NONE	ADD/CHANGE	DEL
4	NONE	ADD/CHANGE	DEL
5	NONE	ADD/CHANGE	DEL
6	NONE	ADD/CHANGE	DEL
7	NONE	ADD/CHANGE	DEL
8	NONE	ADD/CHANGE	DEL
9	NONE	ADD/CHANGE	DEL
10	NONE	ADD/CHANGE	DEL
PAGE2			

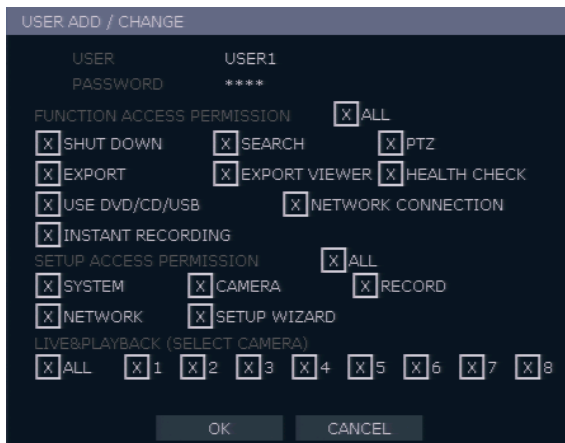
SAVE      CANCEL



## Adding / Changing a User

To add a new user:

1. Click **MENU** on the hover menu and click **SETUP**.
2. Click **SYSTEM**, and then click **USER SETUP**.
3. Click **ADD/CHANGE**.
4. Type a **USER** name.
5. Type a **PASSWORD** and **CONFIRM** for the new user.
6. Select the **FUNCTION** and **SETUP** access options for the user.
7. Select which cameras will be visible to the user in **LIVE** and **PLAYBACK** modes.



**SHUT DOWN** – Allow the user to shut down or restart the recorder.

**EXPORT** – Allow the user to perform an export or backup saved data.

**USE CD/DVD/USB** - Allow the user to use the DVD Drive or USB port. This is a server-side feature only.

**SEARCH** – Allow the user to use the search functions to locate video and access video from the current day using the REPLAY key on the front panel.

**EXPORT VIEWER** – Allow the user to include a copy of the Backup Viewer application when a local backup is made. This is a server-side feature only.

**NETWORK CONNECTION** – Allow the user to log in using Web Viewer.

**PTZ** – Allow the user control of any connected PTZ cameras.

**HEALTH CHECK** – Allow the user to use the Health Check function of RADIUS to connect to and monitor the recorder.

**INSTANT RECORDING** – Allow the user to activate the Instant Recording feature.

**SETUP ACCESS PERMISSION** – Allow the user to access the selected portion of the setup menu.

**LIVE & PLAYBACK** – Allow the user to view live and recorded data for only the selected cameras.

# Configuration

Import and Export current settings. See details in the Save Settings section.

## Shutdown

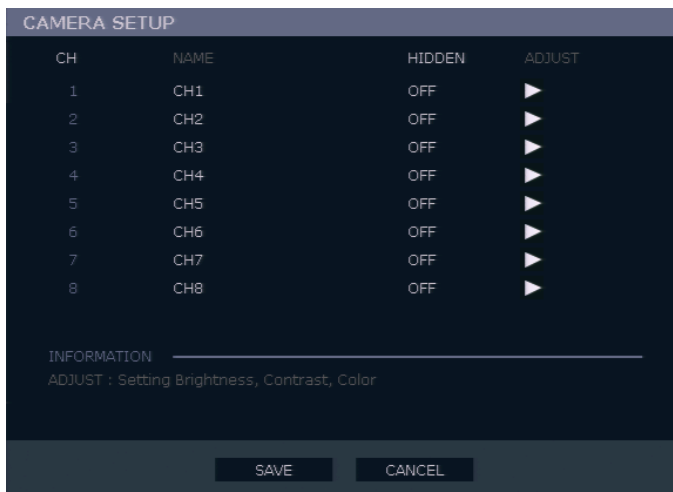
Use Shutdown to safely shutdown the system.

1. On the hover menu, click MENU, and then click SETUP.
2. Click **SYSTEM**, and then click **SHUTDOWN**.
3. Click **OK**.
4. Turn the power off when shutdown is complete by unplugging the power adapter cord on the back of the recorder.

**Note** Improper shut down of the system can cause data loss and system corruption.

# CAMERA

## Camera Setup



**CH** – Camera Channels

**NAME** – Use the on-screen keyboard to enter a camera name [user defined].

**HIDDEN – ON/OFF**

**Note** **HIDDEN** on the CAMERA SETUP page hides cameras from the main monitor (VGA/HDMI/MAIN BNC) when no users are logged in. To hide cameras from users, clear camera check boxes on the **SYSTEM > USER SETUP > ADD/CHANGE**.

**ADJUST** – Detailed camera display settings

# Color Setup (Adjust)

**CAMERA** – 1 ~ 16 [camera to apply color settings to]

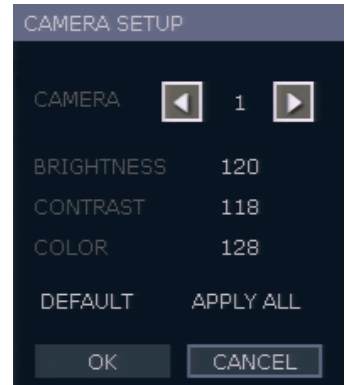
**BRIGHTNESS** – 0 ~ 20

**CONTRAST** – 0 ~ 20

**COLOR** – 0 ~ 20

**DEFAULT** – Apply default system color settings

**APPLY ALL** – Apply current color settings to all cameras



# PTZ Setup

The screenshot shows a 'PTZ SETUP' dialog box with a dark background. It contains a table with four columns: 'CH', 'BAUD RATE', 'ID', and 'PROTOCOL'. The table has 8 rows, each with a camera channel number from 1 to 8. The 'BAUD RATE' for all channels is '9600-8N1', and the 'PROTOCOL' for all channels is 'NONE'. At the bottom of the dialog, there are two buttons: 'SAVE' and 'CANCEL'.

CH	BAUD RATE	ID	PROTOCOL
1	9600-8N1	1	NONE
2	9600-8N1	2	NONE
3	9600-8N1	3	NONE
4	9600-8N1	4	NONE
5	9600-8N1	5	NONE
6	9600-8N1	6	NONE
7	9600-8N1	7	NONE
8	9600-8N1	8	NONE

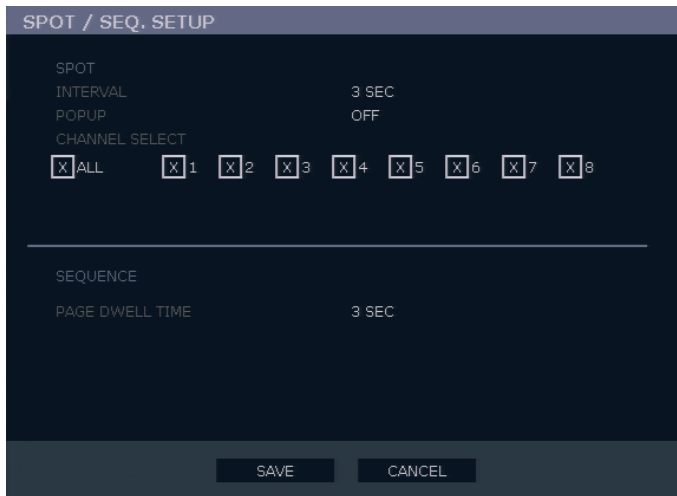
**CH** – Camera Channels

**BAUD RATE** – Sets the port information for the connected camera. [Consult the documentation provided by the camera manufacturer to obtain this information.]

**ID** – Sets the PTZ ID from 1-255

**PROTOCOL** – Select a PTZ protocol

## Spot / Sequence Setup



Spot/Sequence Setup allows you to set the parameters for the SPOT OUT on the recorder and the local live view sequencing.

**SPOT** – Configure the SPOT OUT connection.

**INTERVAL** – Set the sequence interval time (1 ~ 100 seconds).

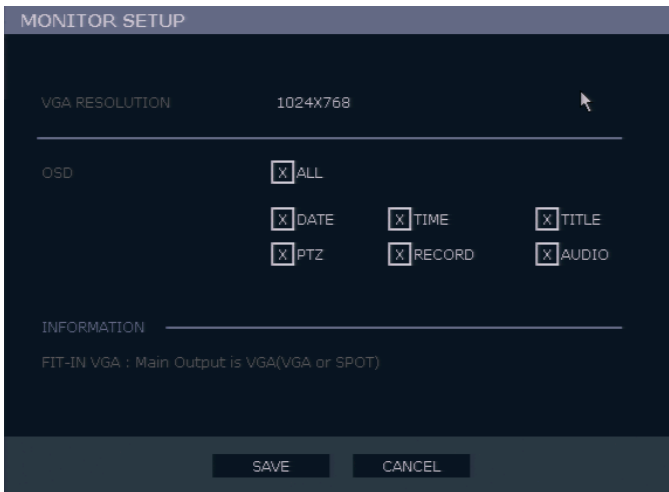
**POPUP** – When enabled, this function interrupts the sequencing when an event occurs, and switches to the event channel (ON / OFF).

**CHANNEL SELECT** – Select cameras to include in sequence (1~16, ALL).

**SEQUENCE** – Configure the appearance of the sequence on the live view screen (VGA/HDMI/MAIN BNC).

**PAGE DWELL TIME** – Set the sequence interval time for full pages (0 ~ 100 seconds).

# Monitor Setup



**TRANSPARENCY SETUP** – Set the transparency of the setup windows (0 ~ 20).

**VGA RESOLUTION** – Set monitor resolution.

**FIT-IN VGA** – Adjusts the display to display properly on a VGA monitor. When **FIT-IN VGA** is not selected, the display is adjusted to display on a monitor connected to the TV Out BNC output.

**OSD** – Select the items to display on the screen (**DATE, TIME, TITLE, PTZ, RECORD, AUDIO**).

# RECORD

## Recording Setup

### Frame

CH	ON/OFF	SIZE	IPS	QUALITY	INTENSIVE	PRE ALARM	POST ALARM
1	ON	960X480	30	NORMAL	OFF	OFF	OFF
2	ON	960X480	30	NORMAL	OFF	OFF	OFF
3	ON	960X480	30	NORMAL	OFF	OFF	OFF
4	ON	960X480	30	NORMAL	OFF	OFF	OFF
5	ON	960X480	30	NORMAL	OFF	OFF	OFF
6	ON	960X480	30	NORMAL	OFF	OFF	OFF
7	ON	960X480	30	NORMAL	OFF	OFF	OFF
8	ON	960X480	30	NORMAL	OFF	OFF	OFF

INFORMATION

USED IPS : 240 IPS / 240 IPS

FRAME SCHEDULE AUDIO INSTANT

SAVE CANCEL

**ON/OFF** – Enable or disable recording on individual camera channels.

**SIZE** – Choose the recording resolutions (**352x240 / 704x240 / 704x480 / 960x480**).

**IPS** – Choose the recording rate (**1–30** Images Per Second).

**QUALITY** – Choose the image quality (**LOW / NORMAL / HIGH / HIGHEST**).

**INTENSIVE** – Enable Intensive Recording to be triggered on a sensor or motion event (**ON/OFF**).

**Note** When a motion or sensor event occurs, **INTENSIVE RECORDING** automatically increases the recording rate to the maximum IPS that is available (based on your current recording configuration frame rate) up to 30 IPS per channel. If events occur on multiple channels with intensive recording enabled, the available IPS is evenly distributed across those channels.

**PRE ALARM** – Set the Pre-Alarm recording time (**0–5** seconds).

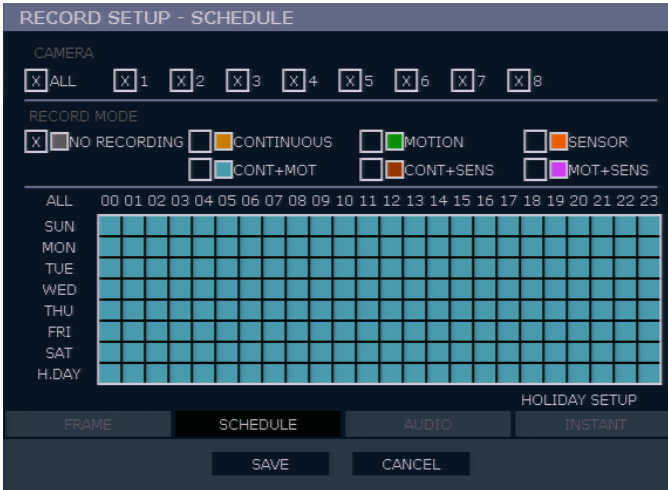
**POST ALARM** – Set the Post-Alarm recording time (**0–30** seconds).

**USED IPS** – This displays the images per second (IPS) currently used, and the total available IPS.

# Schedule

Set the recording schedule for each camera.

1. On the hover menu, click **MENU**, and then click **SETUP**.
2. Click **RECORD**, and then click **SCHEDULE**.
3. Select a camera to create a recording schedule, or select **ALL**.
4. Select your desired **RECORD MODE**.
5. Click hour block or the day of the week to set the entire day.



## NO RECORDING

No Color

No recording.

Even if you set recording frames and select **ON** in **RECORD > CAMERA**, the recorder will not record anything if you select **OFF** in **RECORD > SCHEDULE**.

## CONTINUOUS

Yellow

Continuous recording.

## MOTION

Green

MOTION-detection recording.

In this mode, the unit records only when motion is detected in the motion area, and stops recording when motion is not detected. Adjust motion area settings in **RECORD > MOTION/EVENT SETUP > INPUT**.

If you set motion to **OFF** in **RECORD > MOTION /EVENT CONFIGURATION** and set **CONT + MOT** in **SETUP > RECORD > SCHEDULE** the recorder will NOT record when motion is detected.

<b>SENSOR</b> Orange	Sensor-activated recording. In sensor mode, the unit will record when a sensor is triggered - during <b>DURATION</b> time as set in <b>RECORD &gt; MOTION /EVENT CONFIGURATION &gt; ACTION</b> .
<b>CONT+MOT</b> Sky Blue	Continuous and motion detection recording The unit records in <b>CONTINUOUS</b> mode but switches to <b>MOTION</b> when motion is detected in the motion area. The recorder also will log a Motion Event and send the event to the Remote Monitoring software. If you set motion to <b>OFF</b> in <b>RECORD &gt; MOTION /EVENT CONFIGURATION</b> and set <b>CONT + MOT</b> in <b>SETUP &gt; RECORD &gt; SCHEDULE</b> the recorder will NOT record when motion is detected.
<b>CONT+SENS</b> Brown	Continuous and sensor-activated recording In this mode, the unit records continuously and switches to <b>SENSOR</b> recording mode when a sensor is triggered. The recorder also will log a Sensor Event and send the event to the Remote Monitoring software.
<b>MOT+SENS</b> Lilac	Motion detection and sensor-activated recording. The recorder will only record when motion is detected or a sensor is triggered.

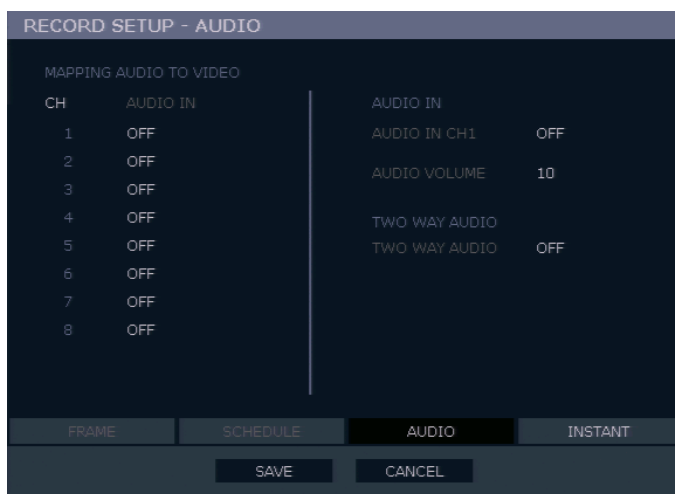


## Holiday Setup

Add a recording schedule for a specific date in **HOLIDAY SETUP**. You can add up to 32 individual holiday recording schedules. To add a new **HOLIDAY** schedule:

1. On the hover menu, click **MENU**, and then click **SETUP**.
2. Click **RECORD**, and then click **RECORD SETUP**.
3. Click **SCHEDULE**.
4. Create a recording schedule in the **H.DAY** row.
5. Click **HOLIDAY SETUP**.
6. Click the **DATE**, and set your desired holiday date using the on-screen calendar.
7. Click the **DESCRIPTION** column to type a description or name for this holiday.
8. Click **ADD** to add the holiday.

## Audio



**MAPPING AUDIO TO VIDEO** – Associate cameras to the appropriate audio channel.

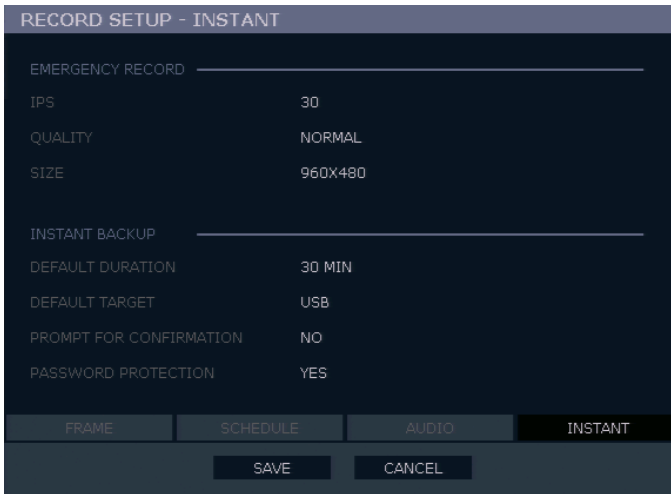
**AUDIO IN** – Enable or disable each audio channel for recording (**ON / OFF**).

**AUDIO VOLUME** – Set audio volume (**1~15**).

**TWO WAY AUDIO** – Enable or disable two-way audio (**ON / OFF**).

## Emergency Recording

Configure the recording settings for Emergency Recording and Instant Backup to use when they are activated.



The screenshot shows a dark-themed menu titled "RECORD SETUP - INSTANT". It is divided into two sections: "EMERGENCY RECORD" and "INSTANT BACKUP".

EMERGENCY RECORD	
IPS	30
QUALITY	NORMAL
SIZE	960X480

INSTANT BACKUP	
DEFAULT DURATION	30 MIN
DEFAULT TARGET	USB
PROMPT FOR CONFIRMATION	NO
PASSWORD PROTECTION	YES

At the bottom, there are four tabs: "FRAME", "SCHEDULE", "AUDIO", and "INSTANT" (which is selected). Below the tabs are two buttons: "SAVE" and "CANCEL".

### *Emergency Record:*

**IPS** – Set the recording rate per camera (in Images Per Second).

**QUALITY** – Set the picture quality (affects file size).

**SIZE** – Set the resolution of the video image.

### *Instant Backup:*

**DEFAULT DURATION** – Set the number of minutes to back up (**15, 20, 30, 40, 50, 60**). If the Default Duration is set to **30 MIN**, the recorder will export the last 30 minutes of data when the Instant Backup button is pressed.

**DEFAULT TARGET** – Set the location the recorder will export to (USB, DVD/CD). Make sure you have the selected media on hand.

**PROMPT FOR CONFIRMATION** – When enabled, the recorder will prompt the user to confirm the export.

**PASSWORD PROTECTION** – Requires the Admin user to login before Instant Backup will start.

## Using Emergency Recording

---

To activate Emergency Recording on the recorder:

- Press the REC button on the IR remote, or click the **Emergency Recording** button on the hover menu.  
The **E-REC** recording icon will appear in the lower right corner of the screen.

To cancel Emergency Recording:

- Press the REC button on the IR remote, or click **Emergency Recording** on the hover menu.  
The recorder will resume scheduled recording.

# Motion/Event Setup

Motion / Event Setup has four sections; Input, Sensor, Action, and Alarm Monitor. When an event occurs (Input), the unit records the image according to its settings (Camera Setup) and triggers an alarm (Action).

## Input

CH	MOTION	SENSITIVITY	AREA	SENSOR	VIDEO LOSS
1	ON	7	ON	OFF	OFF
2	ON	7	ON	OFF	OFF
3	ON	7	ON	OFF	OFF
4	ON	7	ON	OFF	OFF
5	ON	7	ON	OFF	OFF
6	ON	7	ON	OFF	OFF
7	ON	7	ON	OFF	OFF
8	ON	7	ON	OFF	OFF

**CH** – Channels 1-8 will appear by default. To view channels 9-16, click **CH**.

**MOTION** – Enable or disable motion input (**ON / OFF**).

**SENSITIVITY** – 1~10 (1 = least sensitive, 10 = most sensitive)

**AREA** – Define the motion detection area.

**SENSOR** – Associate a sensor with the camera channel.

**VIDEO LOSS** – Associate a channel to monitor for video loss detection.

## Setting Up Motion Detection Recording

MOTION/EVENT SETUP - INPUT					
CH	MOTION	SENSITIVITY	AREA	SENSOR	VIDEO LOSS
1	ON	7	ON	OFF	OFF
2	ON	7	ON	OFF	OFF
3	ON	7	ON	OFF	OFF
4	ON	7	ON	OFF	OFF
5	ON	7	ON	OFF	OFF
6	ON	7	ON	OFF	OFF
7	ON	7	ON	OFF	OFF
8	ON	7	ON	OFF	OFF

INPUT      SENSOR      ACTION      ALARM MONITOR

SAVE      CANCEL

To record data only when motion is detected:

1. On the hover menu, click **MENU**, and then click **SETUP**.
2. Click **RECORD**, and then click **MOTION/EVENT SETUP**.
3. Set **MOTION** to **ON**.
4. Set the motion **SENSITIVITY** level. [1~10].
5. To set a global motion area (each channel can also be configured individually), click **AREA**.
6. Use the mouse to select or clear squares on the grid:
  - a) Right click the screen, and then click **CLEAR ALL**.
  - b) Click the squares to include in the motion grid.
  - c) Right-click again, and then click **SAVE AND EXIT** to save the selected motion grid.
7. Repeat as necessary for each camera channel.
8. When motion area setup is complete select **SAVE** to save settings and exit setup.

# Sensor



## Sensor Setup

1. Set the Sensor **TYPE** to **N/O** (Normally Open) or **N/C** (Normally Closed).
2. Repeat for all sensors.
3. Click **SAVE**.

## Alarm Setup

1. Enable or disable the **SIGNAL (ON / OFF)**.
2. Set each alarm **TYPE (NO / NC)**.
3. Repeat for all relays.
4. Click **SAVE**.

## Power Off

The **POWER OFF** option is a preset function that triggers an alarm relay when the recorder loses power. This function is preconfigured to set alarm relay No. 1 to **ON** and **N/C**. When a power loss occurs, alarm relay No. 4 will open. When power is restored the alarm will close.

## S.M.A.R.T. Alarm

The **S.M.A.R.T. ALARM** option is a preset function that triggers an alarm relay when the HDD exceeds the temperature threshold configured on the **SYSTEM > DISK SETUP > S.M.A.R.T.** page. This function is preconfigured to set an alarm relay to **ON** and **N/C**. When the HDD exceeds the temperature threshold, the alarm relay will open. When the temperature is at a safe level again the alarm will close.

**Note** **SET** and **CLEAR** are used to test the alarm relay operation. **SET** is used to manually activate all relays that are set to **ON**. **CLEAR** is used to manually deactivate all relays.

## Hold Video Loss

When set, the alarm will stay on when a channel loses video. The alarm will turn off when Video returns.

# Action



**CH** – Channels 1-8 will appear by default. To view channels 9-16, click **CH**.

**Alarm** – Associate an alarm relay with a camera channel (**OFF / 1**).

**Delay** – Set the delay time for relay to activate (**0~100** seconds).

**Duration** – Set the duration of the alarm relay (**0~100** seconds).

**Preset** – Enable a PTZ camera to move to a preset position when an event occurs (**0~100**). See PTZ Control for more information.]

**Notify** – Select the type of alarm to associate with this event (**BUZZER / POPUP**).

# Alarm Monitor

Send event information to a remote client using the Alarm Monitor software.

MOTION/EVENT SETUP - ALARM MONITOR		
SEND TO ALARM MONITOR		OFF
MOTION/SENSOR		MOTION
NO.	IP ADDRESS	PORT
1	192.168.0.1	2001
2	192.168.0.1	2001
3	192.168.0.1	2001
4	192.168.0.1	2001
5	192.168.0.1	2001

INPUT    SENSOR    ACTION    **ALARM MONITOR**

SAVE    CANCEL

1. Set **SEND TO ALARM MONITOR** to **ON**.
2. Select the types of events to send to the Emergency Agent (**MOTION, SENSOR, MOTION + SENSOR**).
3. Type the **IP ADDRESS** of the remote client.
4. Type the **PORT** number.

**Note** The port number selected is the port that Alarm Monitor uses on the remote PC. The port shown in this screen must match the port shown in Emergency Agent or RADIUS and the port must be open on the remote PC.

# NETWORK

## Network Setup

Configure network settings.

NETWORK SETUP	
NETWORK	
HOST NAME	dvr
NETWORK TYPE	DHCP
IP ADDRESS	192.168.0.1
SUBNET MASK	255.255.255.0
GATEWAY	192.168.0.1
DNS	192.168.0.1
CLIENT CONFIGURATION	SETUP
TCP MTU	1500
DDNS	
DDNS SERVER	NONE
HOST NAME	-
ID	-
PASSWORD	*
ROUTER IP	OFF
STATUS	CHECK UNCHECKED

SAVE CANCEL

### Network

**HOST NAME** – Host name for the recorder on the network.

**NETWORK TYPE** – Select **STATIC IP** to manually define a static IP address. Select **DHCP** for a DHCP server to assign an IP address automatically. Contact your network administrator for more information.

**IP ADDRESS** – You can set the **IP ADDRESS** if your network type is set to **STATIC**. Contact your network administrator for this information.

**CLIENT CONFIGURATION** – Set up the connection ports and Max transfer speed for remote connections.

**CENTER PORT** – E-Series recorders use the Center port and the primary communication port to create remote connections. This port must be the same as the port setting on the remote PC.

**VIDEO PORT** –E-Series recorders use multiple ports to create remote connections. The remote port is user-defined (default 2000), and a secondary port is automatically assigned (default 2002). The recorder assigns the secondary port based on the remote port, in increments of two. (For example, if you set the remote port to 2222, then the secondary port will be 2224.) Verify that all these ports are available when setting up Network Address Translation (NAT) or firewall.

**WEB PORT** – Defines the port that Internet Explorer uses to connect over the web and view video. If this port is changed then the new port must be defined when attempting to web connect. (For example, if your IP address is 10.0.0.5 and you change the web port to 800, then you must type http://10.0.0.5:800 in your browser.)

**MAX TRANSFER SPEED** – Set network bandwidth. This feature is used for slower internet connections to throttle the amount of data the recorder sends across the network at a time.



## Network Setup continued

**DDNS** - Dynamic Domain Name Service (DDNS) is a service that allows a connection to an IP address using a hostname (URL) address instead of a numeric IP address. Most Internet Service Providers use Dynamic IP Addressing that frequently changes the public IP address of your internet connection; this means that remote connections through RADIUS and Remote would require frequent updates. DDNS automatically redirects traffic to your current IP address when using the hostname address (i.e. oe123456.openeyedvr.com).

**DDNS SERVER** – The current DDNS server.

**HOST NAME** – Hostname for the DDNS server account.

**ID** – Username for the DDNS server account.

**PASSWORD** – Password for the DDNS server account.

**STATUS** – Checks DDNS settings by attempting to communicate with the DDNS Server.

## Serial Setup

Configure connected serial devices.

SERIAL SETUP	
RS 232	RS 495
TYPE	NONE
MODEL	NONE
BAUDRATE	9600 BPS
DATA BIT	8
PARITY	NONE
STOP BIT	1

SAVE CANCEL

**Note:** E-Series Slim and E-Series Max recorders do not have an RS-232 port for connecting serial devices.

**TYPE – NONE / EXTERNAL CONTROLLER**

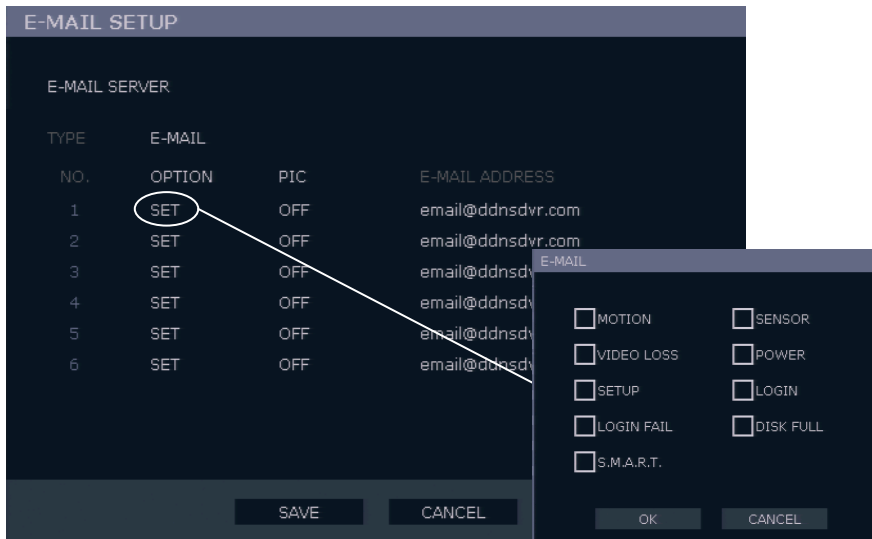
**MODEL** – Select appropriate model.

*Port Information*

**BAUD RATE / DATA BIT / PARITY / STOP BIT**

# E-mail Setup

The recorder can send an e-mail notification to up to six defined e-mail addresses when an event happens.



**E-MAIL SERVER** – Configure the recorder to use selected e-mail server (**DVR / SMTP**).

**OPTION** – Define the type of event that will trigger an e-mail notification.

**MOTION** – After a motion alarm is triggered.

**SENSOR** – After a sensor alarm is triggered.

**VIDEO LOSS** – After video loss on a camera

**POWER** – When the recorder is shutdown and restarted.

**SETUP** – When a user accesses Setup.

**LOG IN** – When a user logs in.

**LOGIN FAIL** – After one failed login attempt.

**DISK FULL** – When the HDD reaches the user-defined maximum disk full percentage. See **DISK MANAGEMENT – OVERWRITE**.

**S.M.A.R.T.** – When the HDD reaches the user-defined maximum temperature. See **DISK MANAGEMENT – S.M.A.R.T.**.

**PIC** – ON / OFF [Enable to send a picture of the event.]

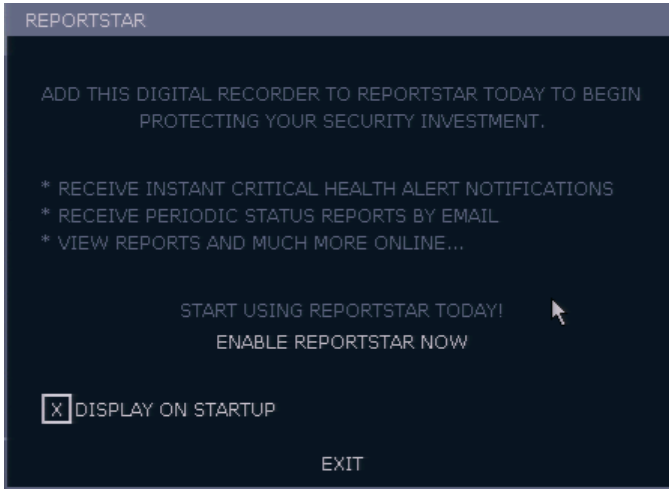
**E-MAIL ADDRESS** – Enter the e-mail address.

# ReportStar

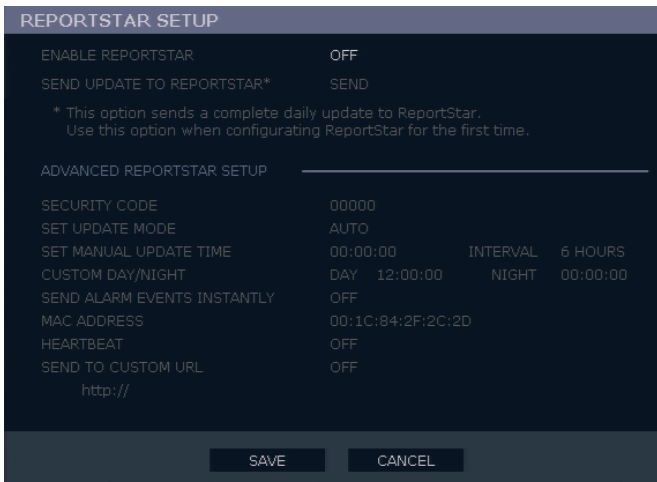
To enable ReportStar on your recorder during the initial configuration:

1. Click **ENABLE REPORTSTAR NOW**.

**Note** To enable ReportStar at any time after the initial configuration, go to **NETWORK > REPORTSTAR SETUP** and then set **ENABLE REPORTSTAR** to **ON**.



2. Log in using the admin user account. (default username: **admin**, password: **1234**)
3. Set the **CUSTOM DAY/NIGHT TIME**.
4. Click **SEND** to send a test report to ReportStar.
5. To send Alarm Events to ReportStar, set **SEND ALARM EVENTS INSTANTLY** to **ON**.
6. To send active updates to ReportStar every 5 minutes, set **HEARTBEAT** to **ON**.
7. Click **SAVE** to save your settings.

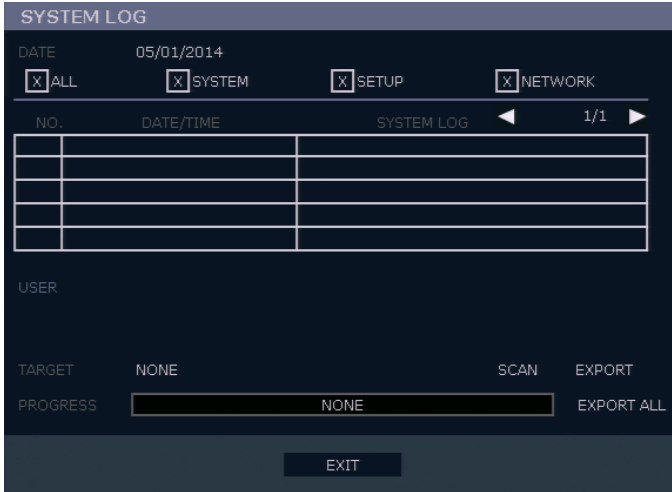


# INFORMATION

---

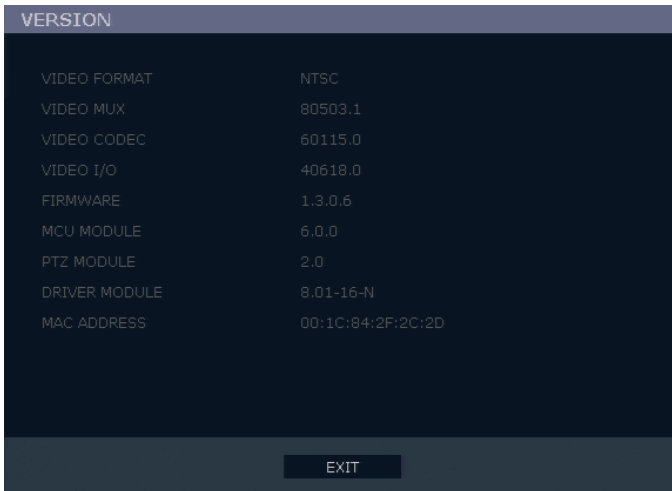
## System Log View

Displays system log information. System Log View displays the recent activity of all users on the recorder. You can export and save the System Log to review user activity.



## Version View

Displays system information and software version information for the recorder.



# Status View

Displays status screens for:

## Disk



## Record



## Audio



# Status View continued

## Sensor

STATUS - SENSOR				
SENSOR		ALARM		
NO.	TYPE	POWER OFF	OFF	
1	N/O	S.M.A.R.T. ALARM	OFF	
2	N/O	HOLD VIDEO LOSS	OFF	
3	N/O			
4	N/O	NO.	SIGNAL	TYPE
5	N/O	1	OFF	N/O
6	N/O			
7	N/O			
8	N/O			

DISK   RECORD   AUDIO   **SENSOR**   NETWORK   EVENT

EXIT

## Network

STATUS - NETWORK	
CONTENT	STATUS
HOST NAME	dvr
NETWORK TYPE	DHCP
IP ADDRESS	192.168.0.1
SUBNET MASK	255.255.255.0
GATEWAY	192.168.0.1
DNS	192.168.0.1
CENTER PORT	2000
WEB PORT	80
CLIENT	

DISK   RECORD   AUDIO   SENSOR   **NETWORK**   EVENT

EXIT

## Event

STATUS - EVENT				
CH	MOTION	SENSOR	VIDEO LOSS	ALARM
1	ON	OFF	OFF	OFF
2	ON	OFF	OFF	OFF
3	ON	OFF	OFF	OFF
4	ON	OFF	OFF	OFF
5	ON	OFF	OFF	OFF
6	ON	OFF	OFF	OFF
7	ON	OFF	OFF	OFF
8	ON	OFF	OFF	OFF

DISK   RECORD   AUDIO   SENSOR   NETWORK   **EVENT**

EXIT

Notes:

# OPERATION

## LOGIN

---

The LOG-IN window will display on the monitor until a user logs in with the correct ID and password.

**Tip** To prevent unauthorized changes to the system settings, the administrator should change the default administrator password and create a User account.

### Default Administrator Log In

The default administrator account login is:

USER: **admin**

PASSWORD: **1234**

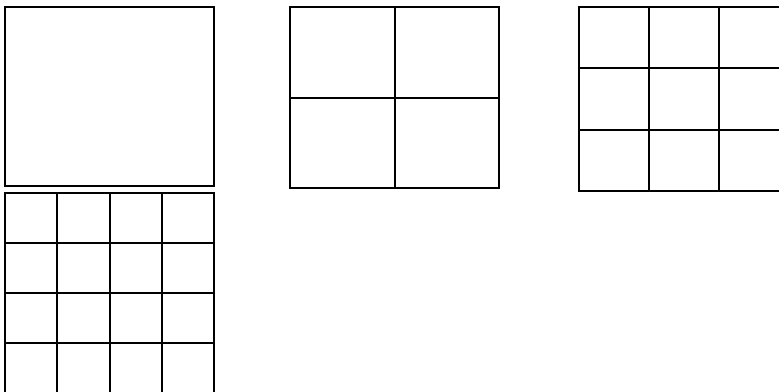
## LIVE DISPLAY MODE

---

### Channel Selection

A live image can be selected by pressing corresponding number key on the front panel of the recorder.

The images can be seen in real-time in the configuration of 1, 4, 9, 16 channels screen. To toggle through the viewing options press LIVE on the recorder.














To select a channel using a mouse, double-click the video image. To return to a previous screen mode after selecting a viewing channel, double-click again.









# Icons

In Live mode, icons or messages on the screen indicate the system mode or status.

## Right-upper corner on each CH.

	Continuous Recording
	Motion Detection Recording
	Sensor Activated Recording
	Continuous + Motion Alarm Recording
	Continuous + Sensor Activated Recording
	Motion Detection + Sensor Activated Recording
	Emergency Recording
	Sensor Activated
	Motion Detected
	Audio Channel
	PTZ Camera

## Right-bottom corner on full screen.

	No HDD, Smart Alarm & HDD Failure
	Using Emergency Recording
	Using PTZ
	Warning for exceeding temperature
	Showing sequence mode
	Showing digital zoom mode

## Mouse-Over Menu

Move the mouse to the bottom of the monitor in live mode. The hover menu will appear.



**Sequence** – Click to start camera sequence.



**Emergency Recording** – Click to start instant recording. In instant recording mode, the system records all channels at the recording rate configured on the Emergency Recording screen.



**PTZ Mode** – Click to enter PTZ mode. In PTZ mode, you can pan/tilt and zoom by moving the mouse pointer, referred to as a virtual joystick.



**Quick Search** – Click to automatically play back the most recent video clip.




**Dock Tool Menu** – Click to dock the Tool menu at the bottom of the screen. If the Tool menu is not docked, it will be shown only when you place the mouse pointer in the lower portion of the screen.

**Note** If there is no icon in the right upper corner of the live screen mode, it means that the system is not currently recording. If this is the case, you should check the recording schedule or camera setup in the main setup menu.

## Instant Recording

The IR remote and hover bar has an Instant Recording button. Press the button to instantly start recording all the channels at the recording rate configured in Emergency Record setup. All the channels, regardless of recording mode & recording on/off, will record.

 will show in live mode and a red bar represents Instant Recording video in the graphic search bar.

## Popup Menu

Right-click the live screen to open the Popup Menu.

**HIDE LIVE VIEW** – Hide the selected camera from Live view.

**RECORD CHANGE** – Change the recording settings for that channel including PPS, quality, resolution, and event response.

**PAGE SEQUENCE** – The **SEQ** icon appears on the bottom right of the screen and displayed channels will be sequentially changed.

**FREEZE ALL** – Pause all channels displayed on-screen.

**AUDIO** – Select an audio channel to play on attached speakers.

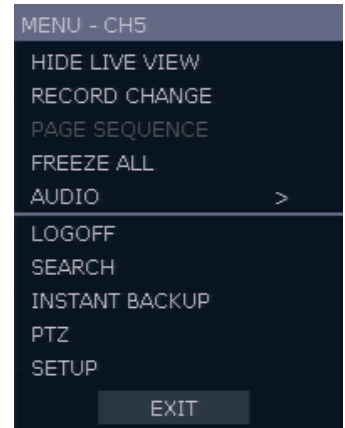
**LOGOFF** – Select to log out the active user.

**SEARCH** – Open the Search Menu.

**INSTANT BACKUP** – Backup direction to connected USB drive.

**PTZ** – Switch to PTZ mode.

**SETUP** – Open the Setup Menu.



## No Signal

If no camera is connected to a channel, NO SIGNAL appears on the display screen. When a camera is disconnected, the recorder will generate a warning sound according to the system settings.

## No Permission

The Administrator can set different levels of authorization for each user. If a user does not have permission to view a certain live or playback channel, that channel will appear black in live and playback mode. If a user attempts to access a restricted function, a NO PERMISSION warning is displayed.

# PTZ

To enter PTZ mode:

- Right-click the Live screen and select **PTZ** on the pop-up menu.  
**OR**
- Click the **PTZ** icon on the hover menu.

Drag the mouse up/down or left/right to move pan/tilt position of the camera. As you move the mouse away from the center of the screen, the camera movement speed increases. You can also zoom-in/out by using the scroll wheel on the mouse.

**Note** Full PTZ functions are available using the front panel buttons, a mouse, or a keyboard controller.

## PTZ Popup Menu

Right-click the desired camera to open the PTZ Popup menu while in PTZ mode.

<b>M</b>	Access the camera OSD menu.
<b>ZOOM</b>	Zoom in/out on PTZ camera. Enabled by default in PTZ mode.
<b>FOCUS</b>	Adjust focus on PTZ camera.
<b>IRIS</b>	Adjust the iris on PTZ camera.
<b>PRESET</b>	Go to preset position. Select the preset number. The maximum preset number is 255.
<b>PRESET TOUR</b>	Start preset tour. PRESET TOUR will sequence through all preset positions. Can only be enabled while in full screen mode.



## Create PTZ Preset Position

1. Right-click your desired PTZ camera to open the PTZ Popup menu while in PTZ mode.
2. Select a PTZ Preset ID number.
3. Click **MOVE** under **PRESET** to move the camera to the desired position.
4. Click **SET** to save the preset position.

# SEARCH


---

## Searching Recorded Data

Search recorded video on the recorder to find a specific time or event.

1. On the hover menu, click **MENU**, and then click **SEARCH**.
2. Select your **TARGET** media (**HDD / USB / CD/DVD**).
3. Select your desired search method.

## Quick Search

- On the hover menu, click  to automatically playback the latest video clip.
- Using the playback control icons, you can search recordings and control the speed of the forward or backward playback (2x, 4x, 8x, 16x, 32x).

## Graphic Search

In the search mode, move the mouse to the bottom of the screen and click the colored time bar to search the desired section of recorded video.

- The white-vertical line indicates the current search time.
- The colors of the time bar are different according to the recording method selected.

**Yellow** – Continuous recording

**Green** – Motion-detection recording

**Orange** – Sensor-activated recording

**Sky Blue** – Continuous + Motion detection recording

**Dark orange** – Continuous + Sensor-activated recording

**Pink** – Motion detection + Sensor-activated recording

**Red** – Emergency Recording

**Dark Blue** – Data recorded during DST (Daylight Saving Time)



## Quick Backup in Search Mode

You can easily archive video while watching a video playback.

**Note:** The Quick Backup is only available using the BACKUP button, provided on the 16 CH E-Series Slim recorder. 4 and 8 channel models do not provide this function.

In the search mode:

1. Press the BACKUP on the front panel to set the Start time. You will see **S [Date/Time of clip]** in right bottom of the playback monitor.
2. Continue video playback until you reach the end of the desired clip.
3. Press the BACKUP again to set the end time. The backup menu will open and you can select the backup media (**CD/DVD OR USB** thumb drive) and complete the backup.

## Express Search

Select a specific date and time to search for recordings:

1. On the hover menu, click MENU, and then click SEARCH.
2. Click **EXPRESS SEARCH**.
3. Click a date on the list.
4. Click the appropriate set of channels and then move the white vertical line indicator to select a specific time for searching.

**Tip** Dates with an asterisk contain recorded video data.

5. Click **PLAY**.
6. Use the playback controls to view the video.

## Event Search

Use the Event Search to find particular events.

The 11 most recent events display on the first Event Search/Log page. Click the arrows at the top of the screen to view the remaining entries for each date. You can filter the log results by **SENSOR, MOTION, VIDEO LOSS, and DISK FULL**.

Write the Event log to a CD/DVD or connected USB device in text file format:

1. Insert a CD/DVD, or connect a USB device to the recorder.
2. Click **SCAN**, and then click **EXPORT** to copy the log information to the CD/DVD or USB device.
3. The Event Log is saved in a dated folder as a system.log file.

## Jump to First Saved Data

Go to the first frame of the recorded data. This is the oldest image recorded.

## Jump to Last Saved Data

Go to the last frame of the recorded image. This is the latest image recorded.

## Daylight Saving Search

Daylight Saving Search is used to find recorded data after switching the time at the end of Daylight Saving Period. The System will record data with the same time stamp for two hours when they are repeated. If any overlapped time data exists the system will display the times on this page.

## Search Popup Menu

Use to access display options in Search Mode.

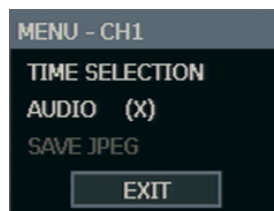
- Right-click the desired channel to open the Search Popup Menu.

**TIME SELECTION** – Change the Date/Time to search.

**AUDIO ON – ON / OFF.**

**SAVE JPEG** – Save a JPEG still image of the current frame.

**Note** **SAVE JPEG** is only available when a single camera is selected. To activate, select a single channel (full screen), pause playback, and press ENTER twice, or right click the channel to open the popup menu.



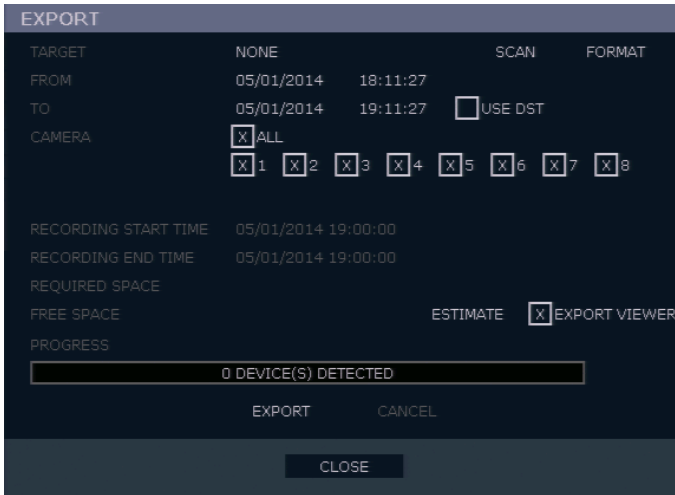
# BACKUP (EXPORT)

---

## Manual Export

Back up recorded data on a CD/DVD or connected USB device.

**Tip** Using this export method, video data is saved in a proprietary format and must be viewed using the Export Viewer software.



To configure a data backup:

1. Click **MENU** on the hover menu, and then click **BACKUP**.
2. Connect a USB device or insert a CD/DVD.
3. Click **SCAN** to locate the device.
4. Select your desired **CAMERAS** and the **FROM** and **TO** time for the backup.
5. Click **ESTIMATE** to display estimated data size and free space available.
6. Select **EXPORT VIEWER** to add the Export Viewer to the backup file.
7. Click **EXPORT**.

**Note** The recorder supports CD-RW, DVD-RW, CD+R, CD-R, DVD+R, and DVD-R.

**Caution** Refer to the USB Flash Drive Approved List in the Introduction chapter. If you are using a new USB device to back up your data, you must format it first as FAT32.

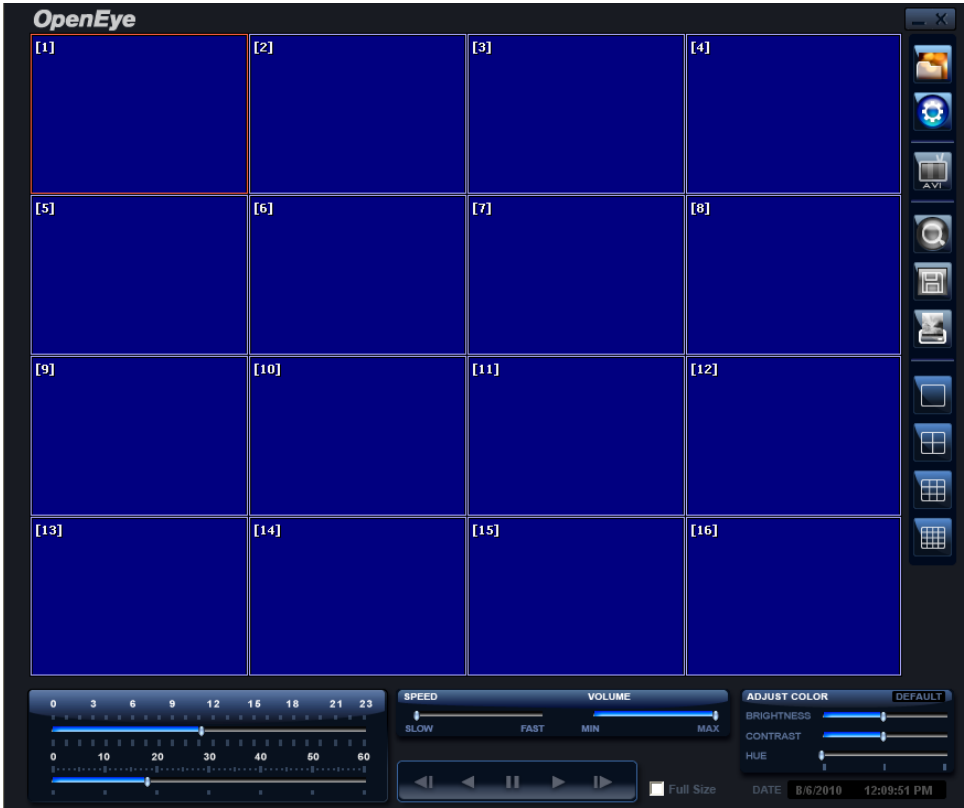
**Note** Click **ESTIMATE** before clicking **EXPORT**. If any backup parameters are changed (Date, Time, Channels) you must click **ESTIMATE** again.

**Caution** Do not shutdown the system during the backup process.



# USING THE BACKUP PLAYER

Play recorded video on a PC using Backup Player, the proprietary media player included with every backup file.



## Controlling Backup Player



## Setup and Save Functions

These function buttons allow you to configure the Backup Player and save a JPEG image or AVI video.



**OPEN** – Allows you to choose which data to open. When selecting data that is saved to your local hard drive, the video must be in a directory named DATA. Navigate to the folder above the DATA directory and click OK to see the available playback options.



**SETTINGS** – Select Direct Draw De-Interlacing for image viewing. Also allows you to include image information when exporting a JPEG.



**EXPORT AVI** –To export an AVI file: Click this button, enter the desired Digital Signature, the AVI start time, the AVI end time and to include audio data (if desired) and press OK.



**ZOOM** – Select this button to turn your cursor into a magnifying glass and click the desired camera image to zoom in.



**EXPORT JPEG** – To save a JPEG: Click this button, enter the desired Digital Signature and click OK, then browse to the desired save location.



**PRINT** – Opens the print window on your computer.

## Play Back Backup Image

Play recorded video on a PC using the proprietary media player included with every backup file.

1. Connect your CD/DVD or USB device to the PC.
2. Navigate to the files on the CD/DVD or USB drive.
3. Double-click the **MultiBackupPlayer** application.
4. Click the **Open Video File** icon and select the file to view from the desired date folder.

## Screen Division Buttons

The Screen Division buttons allows you to view cameras in groups such as two by two, three by three and four by four. The button options are shown below.



**Single Channel View** – Displays one camera channel. To return to a different Multi-Camera View, select a different Screen Division button.



**Four Channel View** – Displays cameras 1-4 in the Video Display Area. Click the button again to rotate to cameras 5-8, 9-12, etc. To return to a different Multi-Camera View, select a different Screen Division button.



**Nine Channel View** – Displays cameras 1-9 in the Video Display Area. Click the button again to rotate to cameras 9-16. To return to a different Multi-Camera View, select a different Screen Division button.



**16 Channel View** – Displays cameras 1-16 in the Video Display Area. To return to a different Multi-Camera View, select a different Screen Division button.

## UPGRADE FIRMWARE AT THE RECORDER

---

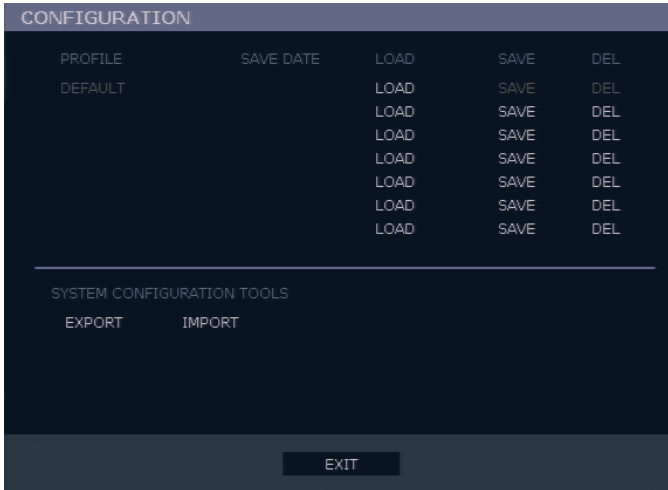
Obtain the latest software release and save the file to a CD/DVD or USB device. Please check the product web site at [www.openeye.net](http://www.openeye.net) or contact Technical Support for the latest software. See the back cover of this manual for contact information.

1. Insert a CD/DVD or USB drive with the update files.
2. On the hover menu, click **MENU**, and then click **SETUP**.
3. Click **SYSTEM**, and then click **SYSTEM SETUP**.
4. Click **S/W UPGRADE**.
5. Select the media type (**DVD/CD-ROM / USB HDD/STICK**).
6. Click **SCAN**.
7. Click **OK** to start the upgrade.

# SAVE SETTINGS

---

Use the System Setup menu to export and import saved or factory default system settings.



## Save Settings

1. On the hover menu, click **MENU**, and then click **SETUP**.
2. Click **SYSTEM**, and then click **CONFIGURATION**.
3. Select an empty **PROFILE** and define a name for the settings configuration.
4. To save settings to a USB device, click **EXPORT**.
5. Click **SAVE** and confirm to continue the export process.

## Import Settings

1. On the hover menu, click **MENU**, and then click **SETUP**.
2. Click **SYSTEMS**, and then click **CONFIGURATION**.
3. Select a previously saved **PROFILE**, and then click **LOAD**.
4. To import a profile saved on a USB device, click **IMPORT**.
5. Click **OK** to complete the import process.

# REMOTE SOFTWARE

## RADIUS OVERVIEW

---

RADIUS is Video Management Software from OpenEye that allows you to access your recorder from any PC or laptop with a network connection.

Use RADIUS to monitor live video, search recorded video, control PTZ cameras, export video, and even search live video as it happens.

For complete instructions regarding the use of RADIUS VMS software, please refer to the RADIUS user manual.

## Installing RADIUS on your PC

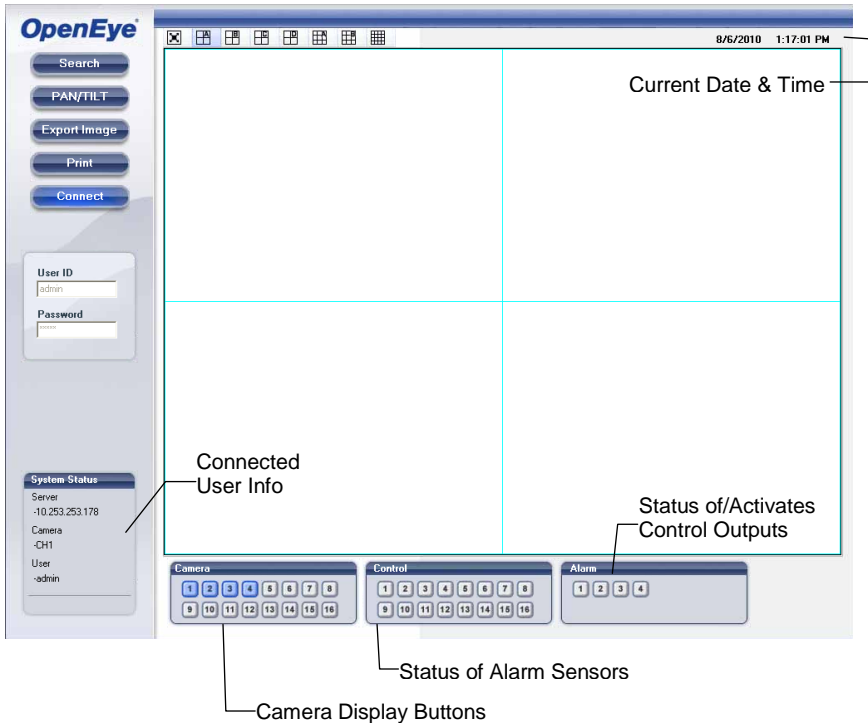
To install RADIUS on your PC, follow these instructions:

1. Locate the Software CD included with your E-Series recorder, and make sure that the PC is turned on.
2. Insert the Software CD into the CD drive.
3. Click **Start > My Computer** – or – double-click the **My Computer** icon on your desktop.
4. Locate the CD drive and double-click to display contents of the CD-ROM.
5. Double-click **OpenEye.exe** – or – right-click **OpenEye.exe** then click **Open**.
6. Click on **Install RADIUS** from the on-screen menu.
7. Follow the on-screen instructions for installing the software.
8. The Setup process will notify you when Radius is installed. Click **Finish** to complete Setup and close the installer window.

# WEB VIEWER OVERVIEW

The recorder allows access to the video using Microsoft® Internet Explorer® browser versions 6 and above.

To log in to the recorder server from the Web Viewer, a user account must be made for the user. This ensures that only authorized users are allowed to log in. In addition, each user can be assigned different privileges that allow or deny access to different functions.



- |                     |                                            |
|---------------------|--------------------------------------------|
| <b>Search</b>       | Open the Search screen.                    |
| <b>PAN/TILT</b>     | Open the PTZ controller.                   |
| <b>Export Image</b> | Save JPG file of selected image.           |
| <b>Print</b>        | Print selected image on connected printer. |
| <b>Connect</b>      | Connect to an OpenEye recorder.            |

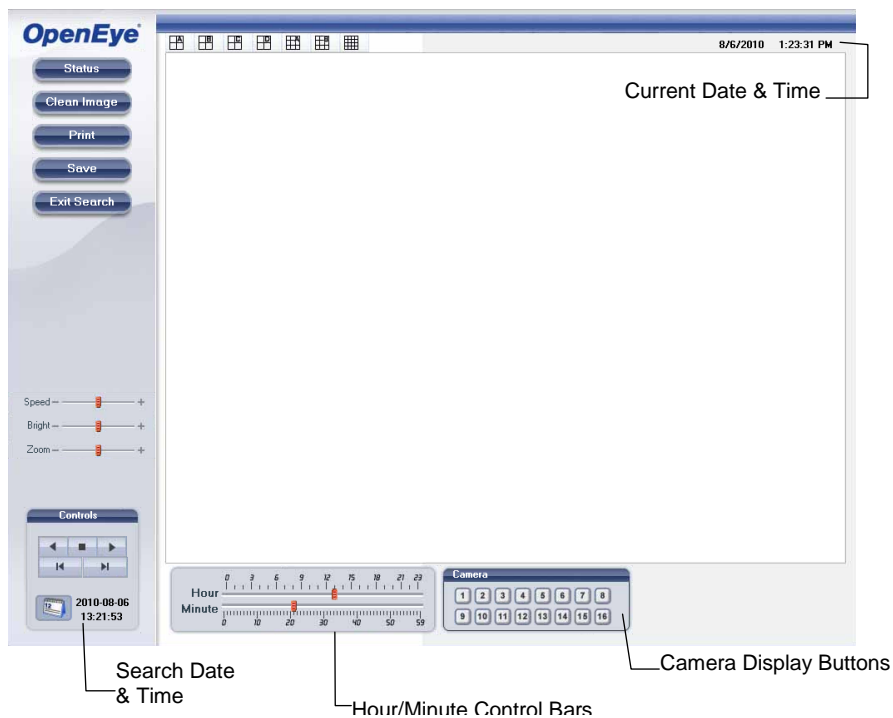
## Connecting to a Recorder Using Web Viewer

1. Open Microsoft Internet Explorer.
2. Enter the IP address of the recorder into the **Address** bar.
3. When attempting this for the first time you will be asked to accept an Active X installation. Click **Yes**.

**Note** If you receive a message saying Internet Explorer security settings do not allow you to download Active X components then you will need to adjust the browser security settings. Add the IP address of the recorder to the trusted sites list inside Internet Explorer settings. Contact the System administrator for additional help with adjusting Internet Explorer settings.

4. Type the **User ID** and **Password** of an authorized user.
5. Click **Connect**. The cameras will display.

## Search Video Using Web Viewer

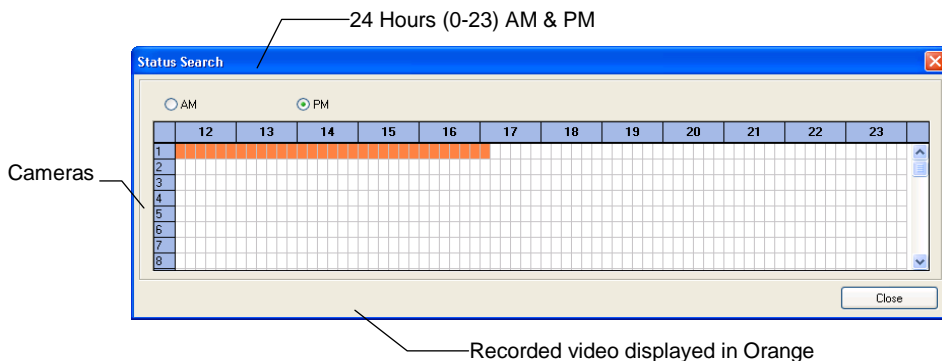


## Performing a Basic Search

1. Click the **Calendar** icon to open the calendar and select a date.
2. Select a time using the hour and minute control bars.
3. Select one or more cameras.
4. Click **Play**. (Video can be played forwards, backwards, or frame-by-frame.)

## Status Search

The Status Search option displays a timeline in graph format. Scroll through multiple cameras and easily locate hours with recorded video.



## Performing a Status Search

1. In Search mode, click **Status**.
2. Click **Date** to open the calendar and select a date.
3. Click along the orange recorded video block to select a desired camera or time frame.
4. After locating the desired video, close the **Status Search** window and use the playback controls to play forward, reverse or frame-by-frame.

## Clean Image

E-Series recorders can record video using one of three different resolutions. When using the 704 x 480 resolution, two fields are mixed. Because of the timing gap between the two fields, according to the standardized image rules, after image might occur to high speed moving images. The recorder allows the user to remove this by clicking Clean Image.



## Print

1. Use the Search screen to locate the desired frame. Double-click the image.

**Note** Only one camera can be selected at a time for this function to work.

2. Click **Print**. The **Print Options** window opens. Depending on the printer being used, there may be several printing options available. Refer to the printer manual for more information.
3. Click **Print** to print the selected images.

**Note** The message “NO DEFAULT PRINTERS INSTALLED” will display if no printer is installed.

## Save

Using the OpenEye Web Viewer, you can export single images in the Image file formats and save video clips in an .AVI format. Both .JPG and .AVI file formats are the most commonly used graphical formats today. Virtually every computer offers some type of support for these file formats which make them the most ideal formats to use.

### JPEG

Optimized for compressing full-color or grayscale photographic images, JPEG images are 24-bit (16.7 million color) graphics. Use JPEG to export a single image or frame.

### AVI

AVI image data can be stored uncompressed, but it is typically compressed using a Windows-supplied or third party compression and decompression module called a codec. AVI is used to export a video clip.

1. From the Search screen, click **Save**.
2. Select the export type, **JPEG** or **AVI**.

**Note** Different image format types provide different file-sizes, quality and compatibility.

3. Select **Mark Digital Signature** if desired.

### AVI File

- a) Select a compression Codec. Each codec provides different levels of quality, compatibility and file-size.
  - b) Enter the **Time to Save** (seconds) to record. Although 50 is the longest time displayed, a longer recording may be entered manually.
  - c) Select Quality – **50 ~ 100**. When size is not an issue, set quality to 100.
4. Click **Next** to select a save location to save file.
  5. Click **Next** to start exporting the file. The **Cancel** button exits the window without exporting file.

# DIGITAL VERIFIER OVERVIEW

JPG images and AVI video files that are exported from the recorder are automatically embedded with a digital signature. Digital signatures are a way to verify the authenticity of the images to ensure that they have not been tampered with or edited in any way. Included on the Software Installation DVD, supplied with the recorder, is the Digital Signature Verification program. This program can be installed on any Windows XP, Windows Vista or Windows 7 computer.

## Using the Digital Verifier

1. Open the Digital Verification program by selecting **Start > Programs > OpenEye > Digital Verifier > Digital Signature Verifier**.
2. Click the **Browse** button to load the JPG image.
3. Enter the Site Code of the recorder that the image was originally extracted from. (The Site Code is specified in the **System Setup** menu.)
4. Click **Verify** to continue or **Close** to close the window without verifying.

If the image has not been tampered with, a blue square will appear around the image with the message “Original image file.”



If the image has been tampered with, a red square will appear around the image with the message “Entire image changed or wrong SITE CODE.”



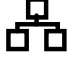


# APPENDIX



## BUTTON INDEX

---












### LED Status Indicators

 POWER	Power	Illuminates when power is supplied to the DVR.
 HDD	HDD	Flashes when the hard drive is being accessed.
 NETWORK	Network	Illuminates when the DVR is connected to a network.


### Enter / Exit Buttons

 ENTER	Enter	Input data, make selections, and open pop-up menus.
 EXIT	Exit	Return to the previous mode or menu, without saving.

## Function Buttons

	<b>Instant Backup</b>	Back up the most recent video instantly.
	<b>Search</b>	Open the search menu.
	<b>PTZ</b>	In the live view, press to enter PTZ mode.
	<b>Backup</b>	In live mode, press to open the backup menu.  For Quick Backup in the search mode: <ul style="list-style-type: none"> <li>• Press once, to set the start time.</li> <li>• Press again, to set the end time.</li> <li>• Press a third time to complete Backup.</li> </ul>
	<b>Live</b>	Change the display mode. Display switches in the following order when the LIVE key is pressed successively: (Single > 4 > 7 > 9 > 10 > 13 > 16 > Single > 4 > 7 > 9 ...split screen mode).
	<b>Setup</b>	Open the setup menu.
	<b>Zoom</b>	In PTZ mode, press to use PTZ Zoom function.
	<b>Replay</b>	Start playback of the latest recordings. (By default, the system searches recordings in the past 30 seconds. If no recording is archived, the system will play back the latest one.)
	<b>Focus</b>	In PTZ mode, press to use PTZ Zoom function.  Use the  and  buttons to adjust.

## Numeric Buttons and Channels

	<b>Numeric / Channel</b>	In live and search modes, press to watch that channel full screen.
-------------------------------------------------------------------------------------	--------------------------	--------------------------------------------------------------------

## Directional and Playback Control Buttons




---

<b>PTZ</b>	Adjust zoom, focus, and iris on a PTZ channel.
<b>Search</b>	Start reverse playback of recordings. Press successively to change the fast reverse speed.

---




---

<b>PTZ</b>	Adjust zoom, focus, and iris on a PTZ channel.
<b>Search</b>	Start playback of recordings. Press successively to change the fast forward speed.

---




---

**Navigation** Move up.

**PTZ** Move the camera view point up.

---



**Navigation** Move to the right.

**PTZ** Move the camera view point to the right.

**Search** Play recorded videos. When pressed successively, the search jumps forward in time by 30 minute increments.

**Search-Pause** Step forward one frame.

---



**Navigation** Move down.

**PTZ** Move the camera view point down.

---



**Navigation** Move to the left.

**PTZ** Move camera's view point to the left.

**Search** Play recorded videos in reverse. When pressed successively, the search jumps back in time by 30 minute increments.

**Search-Pause** Step backwards.

---

# RECORDER SPECIFICATIONS

Model	OE-EMAX8	OE-EMAX16
Camera Channels	8	16
Looping Outputs	No	Yes
Max IPS Per Channel	30	30
Recording Rate (IPS)	240	480
Live Display Rate (IPS)	240	480
Audio Channels	1	1
Video Outputs	1 VGA, 1 HDMI, 1 Spot Out/TV Out (BNC)	
Digital Relay Outputs	1	1
Alarm Sensor Inputs	4	4
Image Compression	H.264	
Recording Resolutions	CIF (352x240), 2CIF (704x240), HD1 (720x240), D1 (704x480), 960H (960x480)	
Video Signal Loss Detection	Yes	
Motion Detection	Adjustable sensitivity, Custom grid	
Remote Operation	Live View, Setup, PTZ, Firmware update (Remote and RADIUS only)	
Remote Software	OpenEye Remote, RADIUS, Web Viewer (Active X)	
PTZ Control	RS-485	
Recording Mode	Schedules for Continuous, Motion, Sensor, Pre- and Post-Alarm Recording, Instant, Quick Global Setup	
Playback Search	Multi-channel playback, Calendar and Timeline Search, Event and System Search, First and Last Search	
Backup	USB, Network	
Digital Signature Support	Digital Signature Support on AVI and JPG	
Dynamic DNS	Free for life of product	
Operating System	Linux® Embedded	
Storage (Size)	Up to 6TB	
External Storage Options	N/A	
Dimensions	<b>W:</b> 10.24" (260 mm) <b>D:</b> 9.65" (245 mm) <b>H:</b> 1.73" (44 mm)	<b>W:</b> 14.17" (360 mm) <b>D:</b> 14.96" (380 mm) <b>H:</b> 2.6" (66 mm)
Warranty	3 years / 1 year advance replacement	

[www.openeye.net](http://www.openeye.net)  
1-888-542-1103

© 2014 OpenEye

All rights reserved. No part of this publication may be reproduced by any means without written permission from OpenEye. The information in this publication is believed to be accurate in all respects. However, OpenEye cannot assume responsibility for any consequences resulting from the use thereof. The information contained herein is subject to change without notice. Revisions or new editions to this publication may be issued to incorporate such changes.