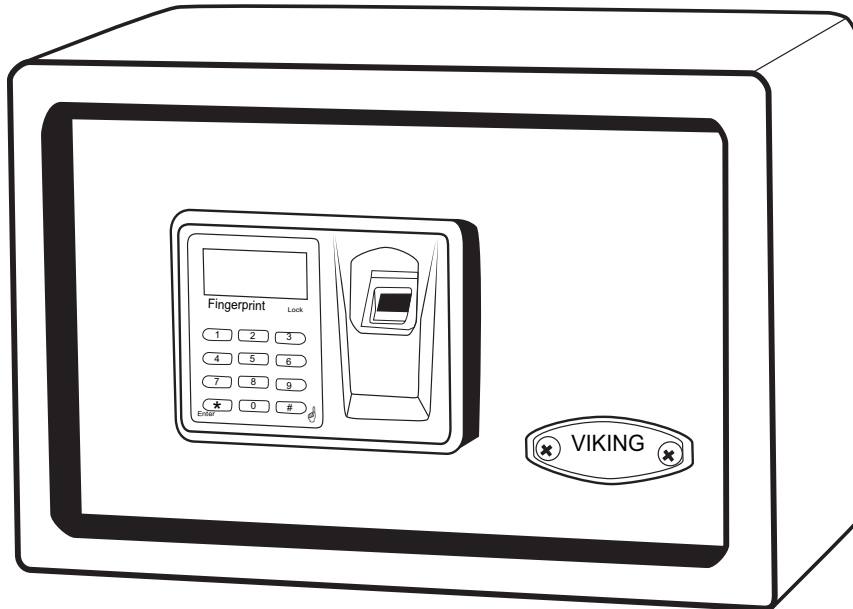




VIKING SECURITY SAFE

## BIOMETRIC FINGERPRINT - LCD - KEYPAD SAFE



<b>Body Material</b>	Steel
<b>Can be open by</b>	Fingerprint / PIN code / Key
<b>Optical Sensor</b>	500 DPI, opens in fraction of a second
<b>Fingerprint Entry</b>	Stores up to 32 fingerprints
<b>Key Pad Entry</b>	Opens with 4-8 digits PIN code
<b>Locking System</b>	Motorized door, deadbolt lock
<b>High Security Keys</b>	4 prong cross keys. Two included.
<b>LCD display</b>	Battery Level indicator, Data Count indicator, OK and Error indicator, etc.
<b>Silent Mode</b>	Silent operation
<b>Warning sound</b>	Safe starts beeping if door is left unlocked for more than 1 minute.
<b>Time Out</b>	Operation is put on HOLD for 3 minutes if 3 incorrect PIN or 5 incorrect fingerprints are input
<b>LED light</b>	Attachable accessory light, operates independently with 3 AAA batteries included
<b>Warranty</b>	One-Year Limited Warranty
<b>Batteries</b>	4 AA
<b>Included Accessories</b>	Inner floor padding, mounting hardware and batteries
<b>Fireproof</b>	No
<b>Door Thickness</b>	3/16"
<b>Body Thickness</b>	1/16"

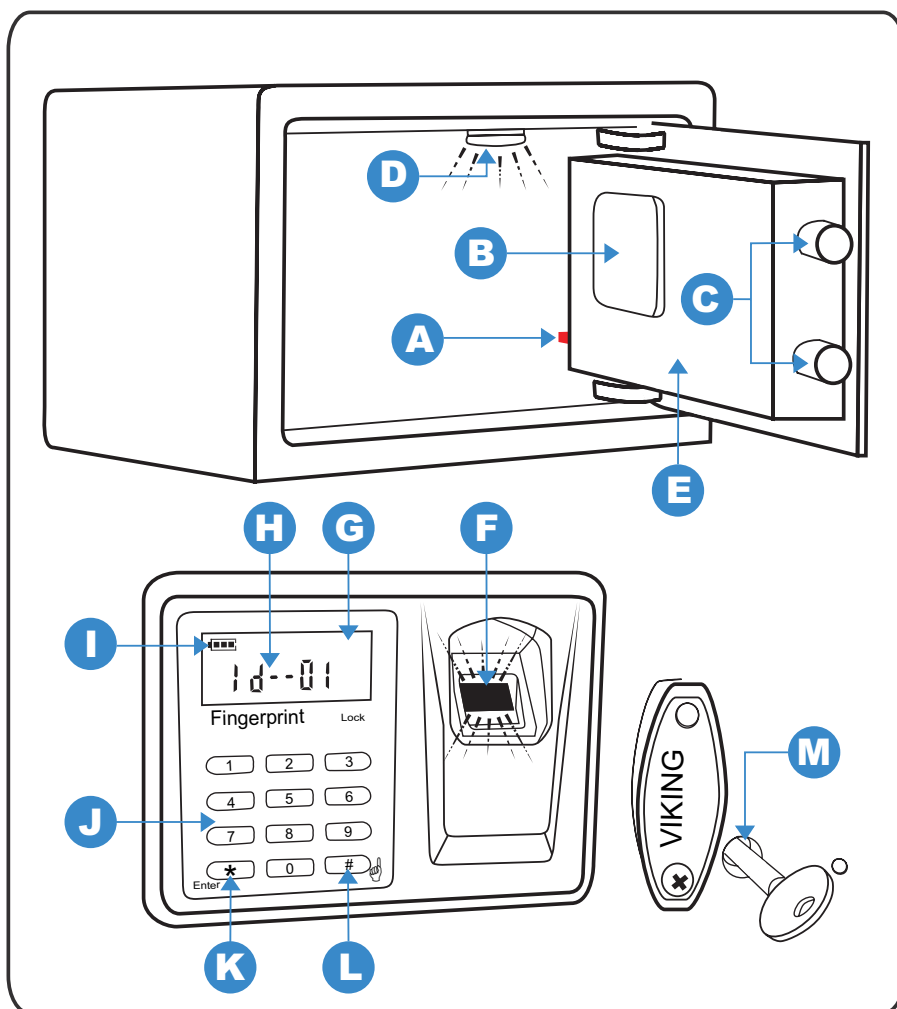
# VIKING SECURITY SAFE

## USER'S MANUAL

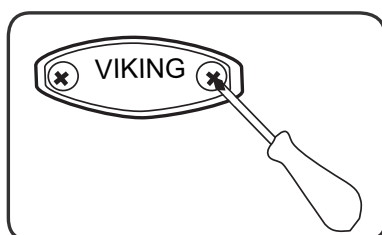
### IMPORTANT

- This safe is in Silent Mode. However, Warning Beep sounds if safe is left UNLOCKED for longer than 1 minute.
- If the safe is in lock state, locking bars sticking out, Red Button (A) is NOT functional. You cannot erase fingerprint data, program the safe nor do any operation.
- Remember to program the same fingerprint in multiple positions.
- Remember to register new PIN code, so safe can no longer be open with factory default PIN "1234"
- If safe is reset to factory default mode, any fingerprint and default PIN code can open the safe.
- Test with non-registered fingerprints and PIN code. If safe opens, the safe is still in factory default mode.
- Time Out Period locks the safe for 2 minutes if 3 incorrect PIN codes or 5 incorrect fingerprints are input. LCD displays "HOLD-Err".
- Test the keys and store them in a secure place, NOT inside of the safe.

### GENERAL DESCRIPTION



<b>A</b>	Initialization/Reset Red Button
<b>B</b>	Battery Compartment
<b>C</b>	Locking Bars
<b>D</b>	LED light (attachable accessory)
<b>E</b>	Motorized Door
<b>F</b>	Fingerprint Scanner
<b>G</b>	LCD display
<b>H</b>	Data Count Indicator
<b>I</b>	Battery Indicator
<b>J</b>	Key Pad
<b>K</b>	Star Button (*)
<b>L</b>	Pre-Scan Pound Button (#)
<b>M</b>	Logo Plate and Key Access

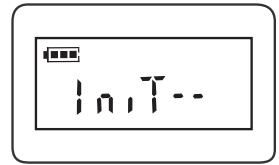


### 1. BEFORE FIRST USE

- 1.1. If safe is locked, unlock the safe with key. Keyhole is located under the Logo Plate. Remove using a Phillips screwdriver.
- 1.2. Install 4 AA batteries.

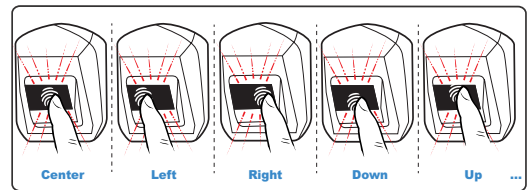
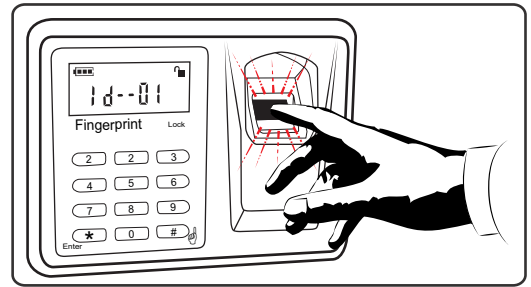
## 2. HOW TO RESET SAFE TO FACTORY DEFAULT SETTINGS

- 2.1. PRESS and HOLD down red button (A) for 10 seconds. "INIT" flashes on LCD display followed by "OK". Safe is reset to Factory Default. All data is deleted and you can begin new registration when red light comes on.



## 3. HOW TO REGISTER FINGERPRINTS ON FINGERPRINT SCANNER

- 3.1. To register fingerprints PRESS BRIEFLY red button (A). As soon as red light comes on, press your fingerprint on the glass fingerprint scanner. LCD screen will display "OK", battery indicator and data count indicator "1d - -01".
- 3.2. If the registration fails "Err" will be displayed on LCD screen. Register the same finger again by repeating Step 3.1.
- 3.3. Repeat Step 3.1 with the same fingerprint but change fingerprint position on the glass scanner - left, right, up, down, to the side.  
**Note:** The more times and various you program one fingerprint the more likely it is to open in an emergency.
- 3.4. To register a completely different fingerprint, repeat Step 3.1.



## 4. HOW TO REGISTER/CHANGE PIN CODE ON KEYPAD

**Note:** Start with Factory Default PIN 1234 if safe is new or reset. Register New PIN code using 4-8 digits. If you want to change already registered PIN, follow the same steps beginning with your Registered PIN and changing it to the New PIN. Test both PIN codes. Only Registered PIN code should open the safe.

- 4.1. Punch in default PIN "1234" and press star button (\*). Punch in the same PIN again and hold down star button (\*) until underscore ( \_ ) is displayed on the LCD screen.
- 4.2. Immediately punch in the new PIN code and press star button (\*). REPEAT once again. An "OK" will display on the LCD screen after the PIN is input twice. New PIN is registered.

## 5. HOW TO UNLOCK AND LOCK THE SAFE USING YOUR FINGERPRINT

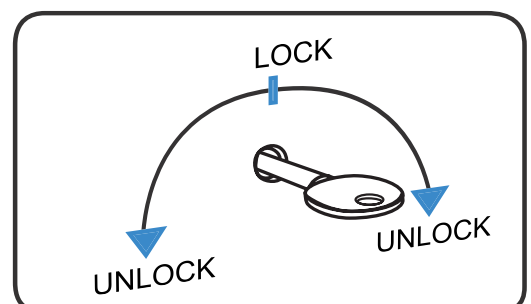
- 5.1. Using your fingerprint. Press pound button (#). When red light comes on, press a registered fingerprint on the Glass Fingerprint Scanner. Battery indicator and data count indicator "1d - -01" will display on LCD screen. Safe is Unlocked.
- 5.2. The Safe can be locked by pressing either star button (\*) or pound button (#).

## 6. HOW TO UNLOCK AND LOCK THE SAFE USING YOUR PIN CODE

- 6.1. Using PIN code. Punch in a registered PIN code and press star button (\*).
- 6.2. The Safe can be locked by pressing either star button (\*) or pound button (#).

## 7. HOW TO UNLOCK AND LOCK THE SAFE USING YOUR HIGH SECURITY KEY

- 7.1. Using Keys. Insert the key in the keyhole by holding the round head in horizontal position parallel to the floor.
- 7.2. To UNLOCK - rotate Key to the left or to the right. Both directions will unlock the safe.
- 7.3. To LOCK - rotate Key to the middle position, the round head in horizontal position parallel to the floor. Safe is locked.



## CARE AND MAINTENANCE

- To maximize the security and performance of the safe, keep Fingerprint Scanner (F) clean
- Use a dry cloth to remove any smudges or prints off the Fingerprint Scanner after each use
- DO NOT use chemicals or cleaning agents to clean the safe
- Test registered fingerprints and PIN code every 6 months
- Keep liquids away from the control panel. Spills on the control panel will cause damage and possibly electric shock
- Secure safe in a proper area to prevent from falling and causing damage or injury
- DO NOT disassemble the product. For all repairs, contact Viking Security Safe Customer Service

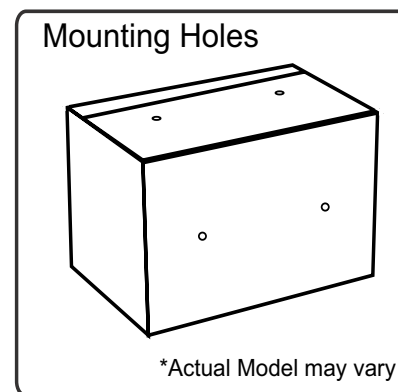
## MOUNTING INSTRUCTIONS

**It is recommended to bolt down the safe.**

**Note:** The safe may be mounted to a wall or floor. Be aware of the load bearing. Failure to do so can result in personal injury and/or damage to property. Use appropriate tools when performing work and always use eye protection

### • Wall Mounting

- Do not mount the safe without anchoring to the wall
- Find the studs in the wall, at your desired location. Most studs are 16 inches or 24 inches apart
- Check the wall for concealed wires or pipes
- Measure the location of the pre-set drill holes; mark their exact position onto the wall ensuring that the studs or anything else behind will not interfere
- Drill the appropriate size holes for the anchors you are using
- Carefully press the anchor into the holes at this time
- Mount the safe by running screws from inside of the safe and securing to anchors; ensure the safe is mounted securely.



### • Floor Mounting

- Use proper drill tools depending on the type of floor you are mounting the safe (wood, tile, or concrete)
- Measure the location of the pre-set drill holes; mark their exact position onto the floor
- Drill the appropriate size holes for the anchors you are using
- Carefully press the anchor into the holes at this time
- Mount the safe by running screws from inside of the safe and securing to anchors; ensure the safe is mounted securely.



VIKING SECURITY SAFE