

# SuperReporter 2

Professional Digital Signage Management Software

## User Manual



**CAYIN TECHNOLOGY CO., LTD.**

8F , NO. 577 , Linsen N. Rd., Taipei City104, Taiwan, R.O.C

TEL: +886-2-2595 1005

FAX: +886-2-2595 1050

2010 © CAYIN Technology Co., Ltd. All Rights Reserved

MMSR20/EN/100323

## About CAYIN

CAYIN Technology offers a complete portfolio of digital signage solutions, including media players, servers, and software, for various commercial applications, such as education, transportation, retail, hospitality, corporate use, and financial and public institutions. CAYIN is committed to being a reliable partner to its clients worldwide, and has successfully set up various application references internationally. In order to best facilitate the deployment of CAYIN products, the Company also provides tailored services to satisfy the ascending market demand for almost limitless applications.

## Copyright Notice

Copyright © 2010 CAYIN TECHNOLOGY CO., LTD. All Rights Reserved.

All the contents in this manual are the intellectual property of CAYIN Technology Co., Ltd ("CAYIN"). No part of this manual, including the products and software described in it, shall be reproduced, transferred, distributed, stored in any form, or translated into any language without the prior written permission of CAYIN. Specifications and information in this manual are subject to change at any time without obligation to notify any person of such revision or changes.

## Trademark Notice

All brand names, icons, and trademarks appeared in this manual are the sole property of their respective holders.

## Disclaimers

THE CONTENTS OF THIS MANUAL ARE PROVIDED "AS IS." CAYIN MAKES NO OTHER REPRESENTATION OR WARRANTIES, EITHER EXPRESSED OR IMPLIED WITH RESPECT TO THE CONTENTS HEREOF AND SPECIFICALLY DISCLAIMS THE IMPLIED WARRANTIES OF MERCHANTABILITY OR FITNESS FOR A PARTICULAR PURPOSE. IN NO EVENT SHALL CAYIN, ITS DIRECTORS, OFFICERS, EMPLOYEES OR AGENTS BE LIABLE FOR ANY INDIRECT, SPECIAL, INCIDENTAL, OR CONSEQUENTIAL DAMAGES (INCLUDING DAMAGES FOR LOSS OF PROFITS, LOSS OF USE OR DATA, AND THE LIKE), EVEN IF CAYIN HAS BEEN ADVISED OF THE POSSIBILITY OF SUCH DAMAGES ARISING FROM ANY DEFECT OR ERROR IN THIS MANUAL OR PRODUCT.

## Contents

About CAYIN .....	2
Copyright Notice.....	2
Trademark Notice .....	2
Disclaimers .....	2
1. System Requirement.....	4
2. Version & Edition .....	4
3. Software Installation .....	5
4. Collecting Logs.....	7
5. Create and Manage Project.....	8
5-1 Create Project .....	8
5-2 Add Player Profile .....	10
5-3 Import Player Profile .....	13
5-4 Add and Manage Content Profile .....	14
6. Statistics Report .....	16
7. Player Status Report.....	21
7-1 Search for Players.....	22
7-2 Export Connection Summary .....	23
8. Generate Report by Command-line .....	24
8-1 Use cyrm.exe and parameters.....	24
8-2 Use ‘cyrm.exe’ with Windows Scheduled Tasks.....	26

SuperReporter 2 is the advanced reporting software dedicated for CAYIN digital signage network. Incorporated with CAYIN SMP players, the software assists administrators in generating playback and system status reports instantly for multiple digital signage networks.

## 1. System Requirement

- \* Operating System: Windows® XP, Windows® Vista, or Windows® 7
- \* Display resolution: 1024 x 768 or above is recommended
- \* Processor: Intel® Pentium® 4 compatible CPU or above
- \* Memory: 512 MB minimum. 1024 MB or more is recommended
- \* Hard Disk: 10MB for program and configurations, 20GB or more for storing log records

## 2. Version & Edition

SuperReporter 2 includes four editions – Basic, Intermediate, Advanced, and Premium. A free trial version is also available. The main difference between these four editions is the project quantity. Please refer to the following table for comparison.

<b>Edition</b>	<b>Project Quantity</b>
Trial (30 days free trial)	1
Basic	1
Intermediate	3
Advanced	10
Premium	256

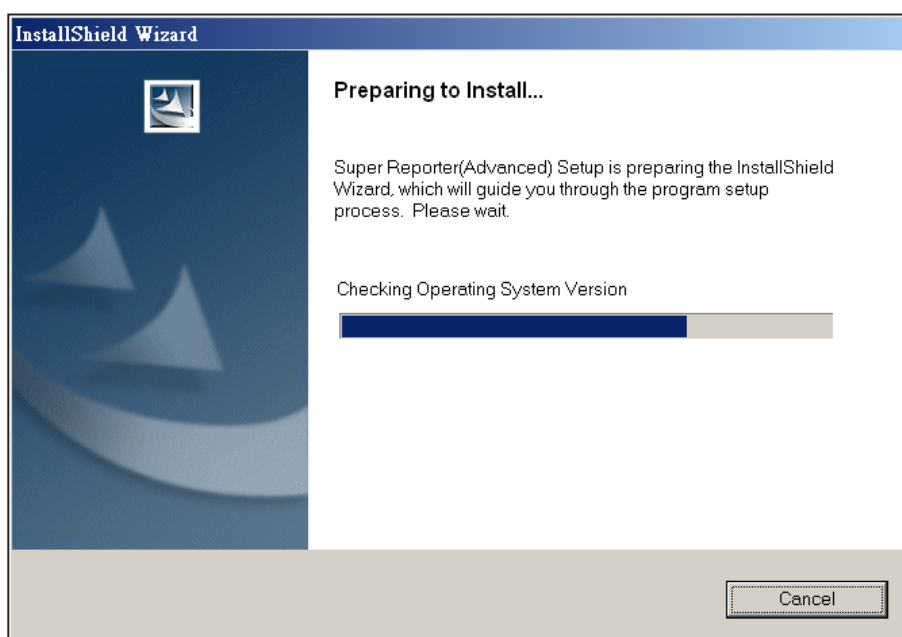
**NOTE**

You can find SuperReporter 2 Trial setup program in folder “\ **SuperReporter Trial**” of CMS or SMP Product CD.

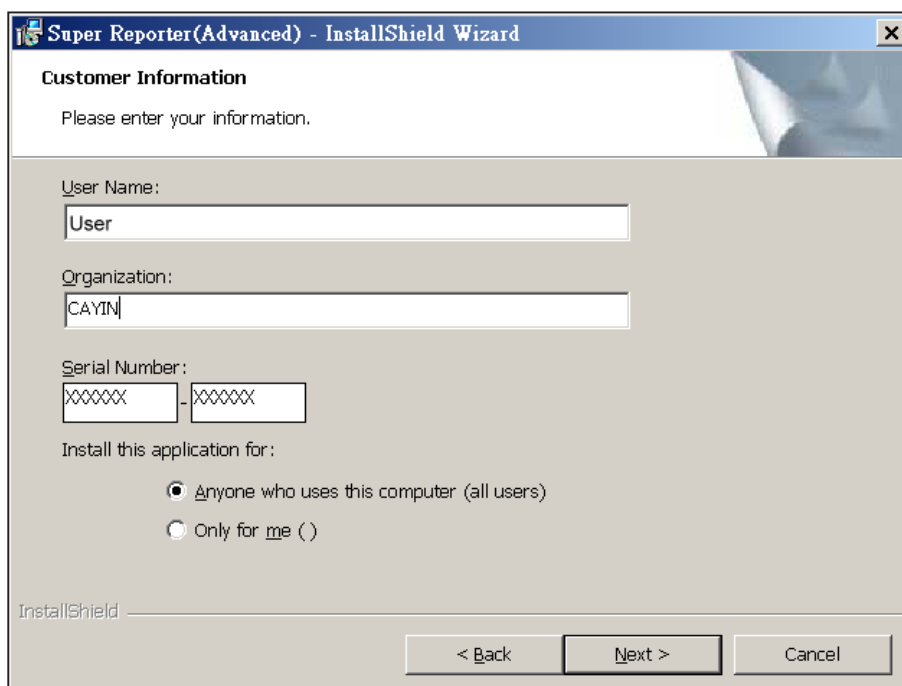
### 3. Software Installation

Follow the steps below to install SuperReporter 2 on your PC. Make sure the PC meets the system requirements beforehand.

1. Click on Setup.exe to execute the SuperReporter 2 program.
2. Click on **[Next]** after you see the Welcome window.



3. Enter Username, Company, and Serial Number, and then click on **[Next]**.

**NOTE**

SuperReporter 2 installer copies 3 executable programs to your PC: **log\_rcv.exe**, **Cyreport.exe** (SuperReporter 2), and **cyrm.exe**.

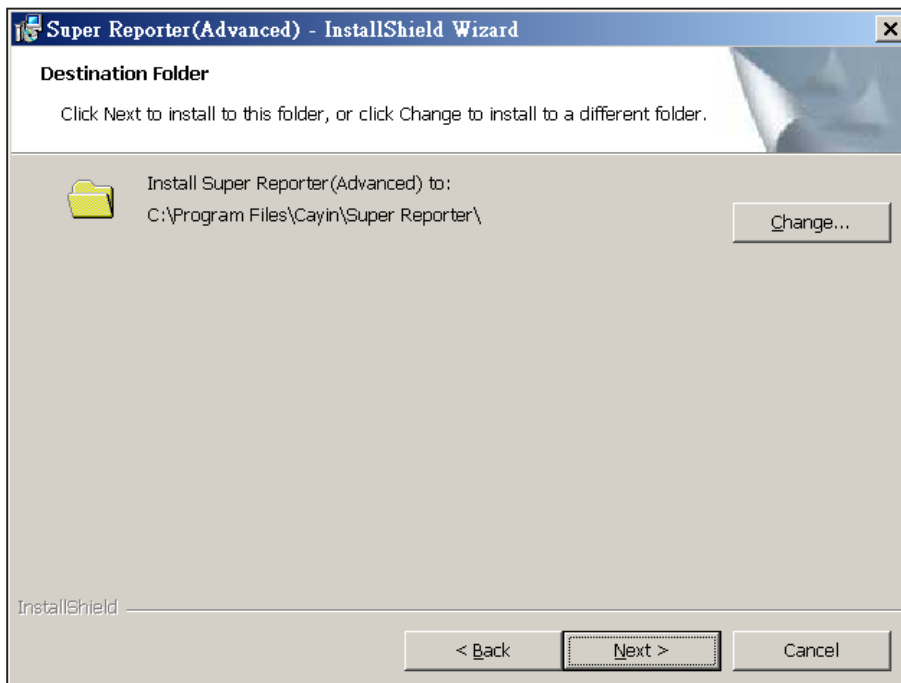
'**log\_rcv**' collects log records via Syslog protocol. It runs under DOS mode. Installer will create a shortcut of log\_rcv.exe in '**Start**' menu to make this program execute automatically after the system boots up.

'**Cyreport.exe**' (SuperReporter main program) is a Windows program. It helps to manage projects and log records and generate reports.

'**cyrm.exe**' is a command-line program. You can generate reports by using it with batch file or Windows schedulers, and send reports via email.



4. Give the installation folder path of SuperReporter 2 and click on [**Next**]. Wait a few seconds until the Setup program finishes.



## 4. Collecting Logs

1. Appoint SuperReporter 2 PC as SMP's syslog server (**Log > Syslog Server**) and enter the PC's IP address here. Then check log category item '**playback**'.

**Cayin** Web Manager  
SMP-PRO4 (Signage Media Player)

LOG

**Log Settings**

Log function helps you to create or read log records. Syslog function allows separate log software to retrieve or further analyze. Select log categories to define the log records you would like to keep in the player or server. Click "View Log" or "Export" to check the log records.

Enable Remote Log

☐ Disable remote log ☒ Send remote log by SYSLOG ☐ Send remote log by TCP

Remote log server

IP address: 172.16.0.0

Port number: 35000

Category

Category

☒ System ☒ Network ☒ Media player

☒ Playback ☐ Miscellaneous

APPLY

SAVE

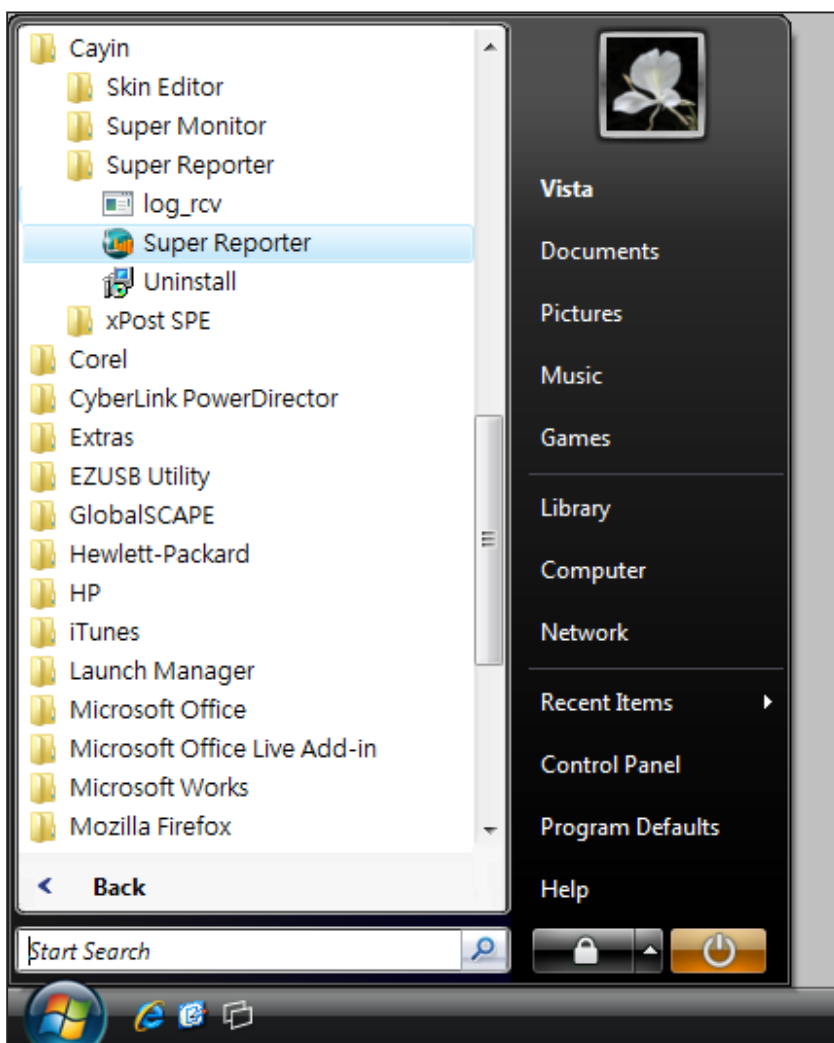
2. Run '**log\_rcv.exe**' at the path: **Start > All Program > Cayin > SuperReporter > Log\_rcv**. This will make the system start to collect log records.

## 5. Create and Manage Project

### 5-1 Create Project

SuperReporter 2 only generates reports per project (s), so project (s) have to be created before doing any log and report management. Different editions of SuperReporter 2 allow different manageable project quantities. After the installing procedures, follow the steps to create project(s).

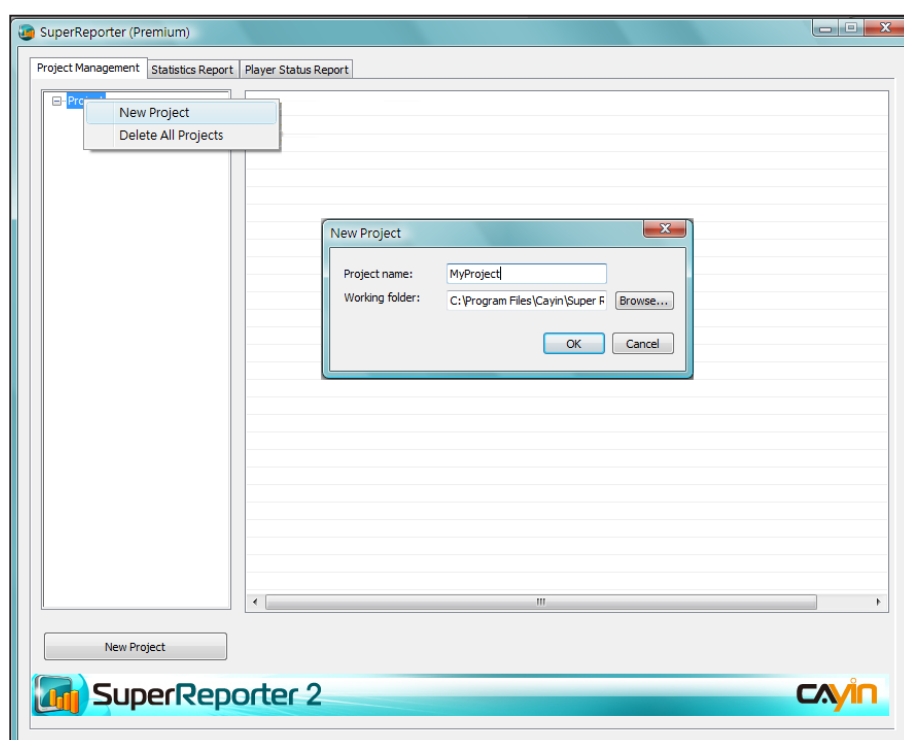
1. Execute SuperReporter 2 at the path: **Start > All Program > Cayin > SuperReporter > SuperReporter.**



**NOTE**

On the same PC, only one log\_rcv.exe can be executed at the same time. Using the same working folder on the local computer for all projects is necessary.

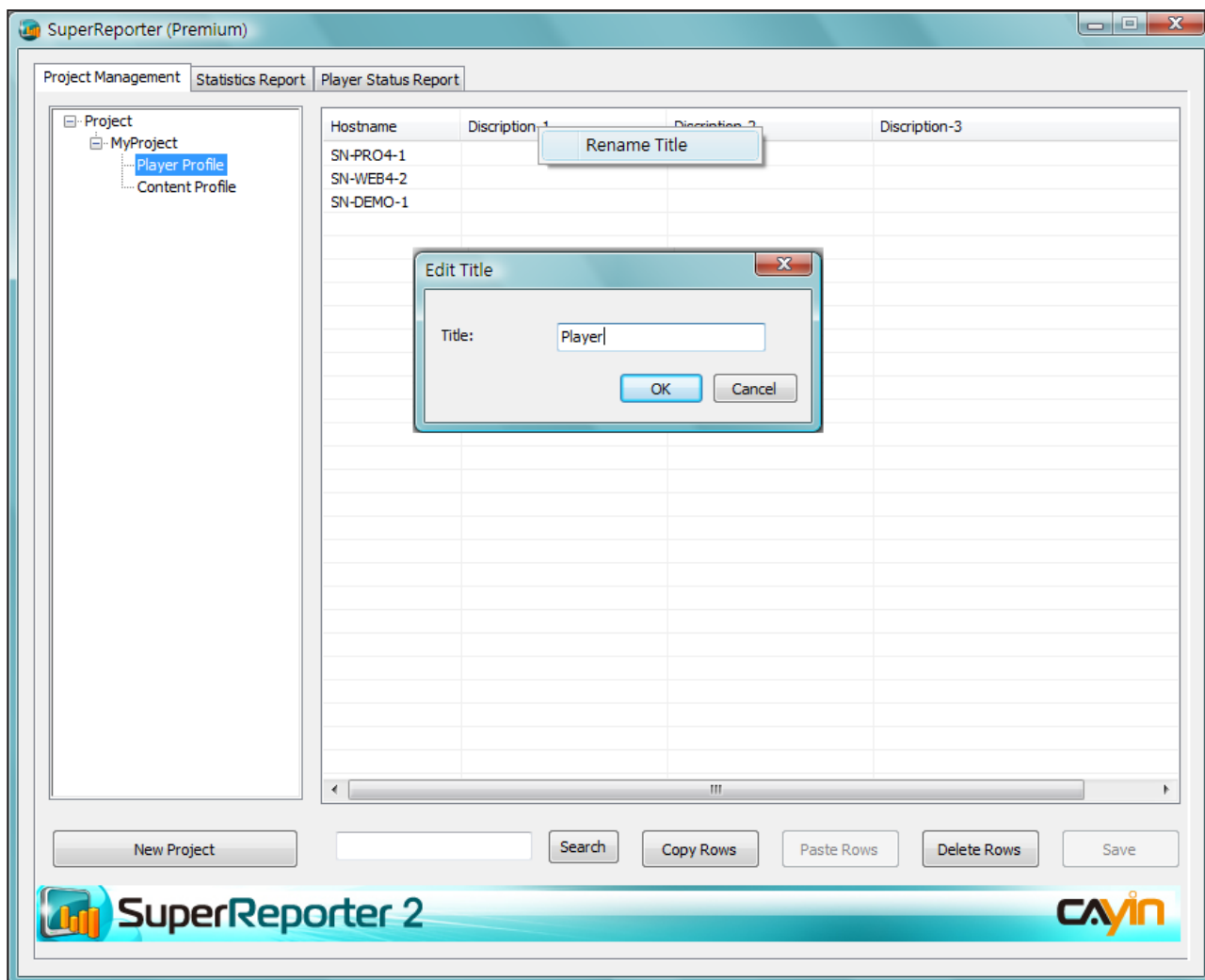
- After SuperReporter 2 starts, choose page '**Project Management**' and click [**New Project**]. In the dialog box '**New Project**', enter the project name. You can also find the path of '**Working folder**' that has to be the same folder of the program file '**log\_rcv.exe**' and is, as default, the same as the location of the path of SuperReporter in the dialog box. Normally it is not necessary to change the default path. If you need to specify another folder, where a log\_rcv.exe program must be installed and executed, click on [**Browse...**] and specify it.



- Click [**OK**] to confirm the settings.



2. You can add up to three description fields to help you identify each player. Right click your mouse on the title of the field '**Description**', then choose '**Rename Title**'. You can decide if you want to change the title name or not.



configuration, please click [**Save**] to store the information.

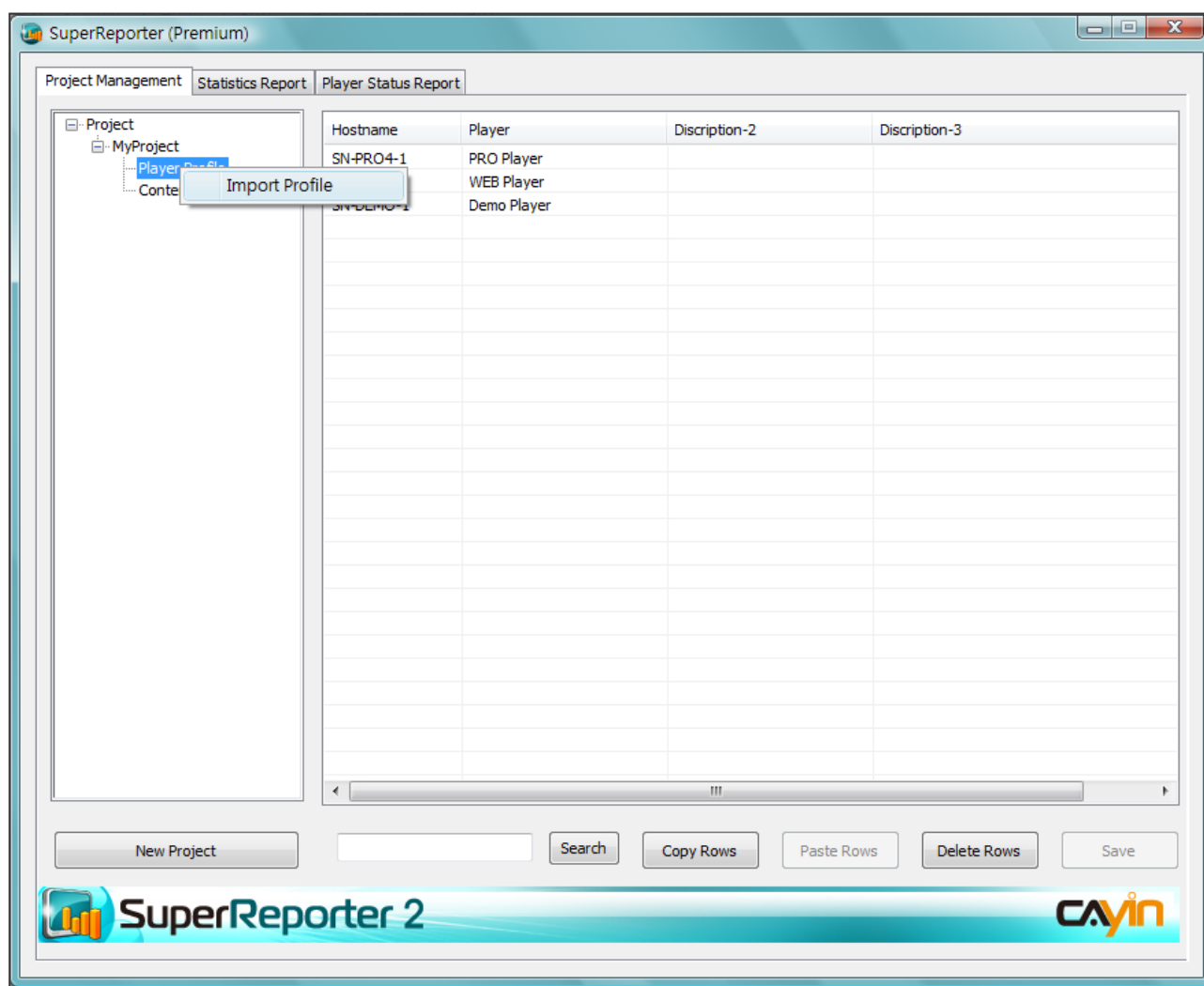


## 5-3 Import Player Profile

You can also choose to add player profiles from CAYIN's SuperMonitor by '**Import Profile**' command. If you want to do so, you have to export the player profile from SuperMonitor first. Please refer to SuperMonitor's User Manual for the detailed information about '**Export**' function.

Follow the steps below to import player profiles to SuperReporter 2.

1. Right click on project's Player Profile node.



3. Choose an '**.ini**' file that is exported from SuperMonitor, then click [**Open**].
4. You can choose either [**Replace**] to replace current players with new players or [**Merge**] to add new players and replace identical players.

## NOTE

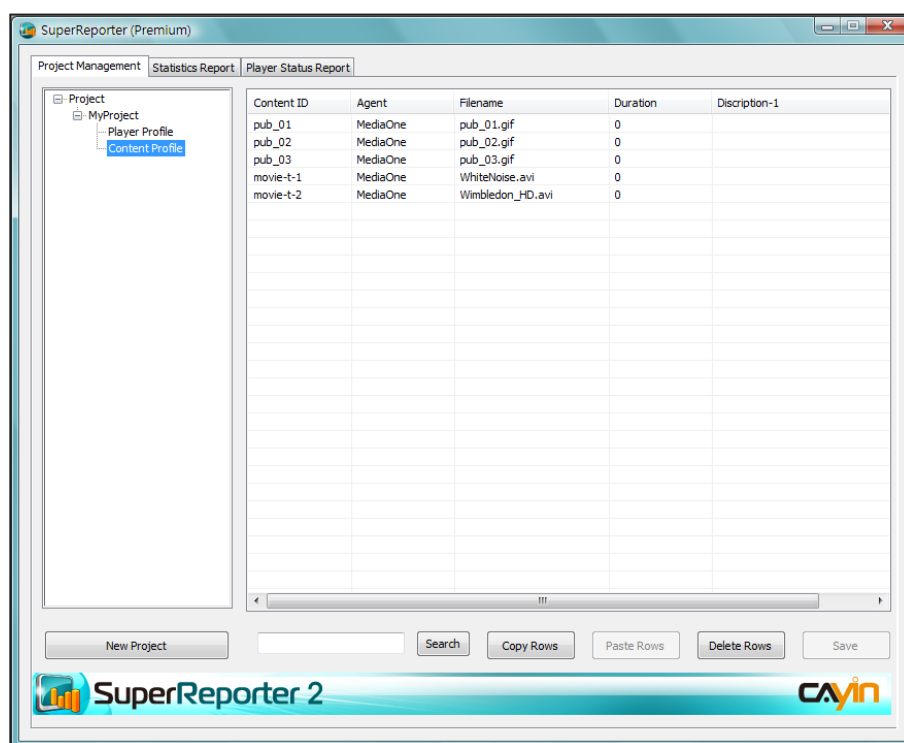
SuperReporter 2 can only create statistics for playback items with **'Billing'** logs as follows:

- a. SMP-PRO series: items of multimedia and image slideshow.
- b. SMP-WEB series: items of web playlist, embedded video in HTML items, and image/video in program.

## 5-4 Add and Manage Content Profile

SuperReporter 2 needs content file information to generate statistic reports. For each content file, you should enter its content ID, agent, and filename in Content Profile fields.

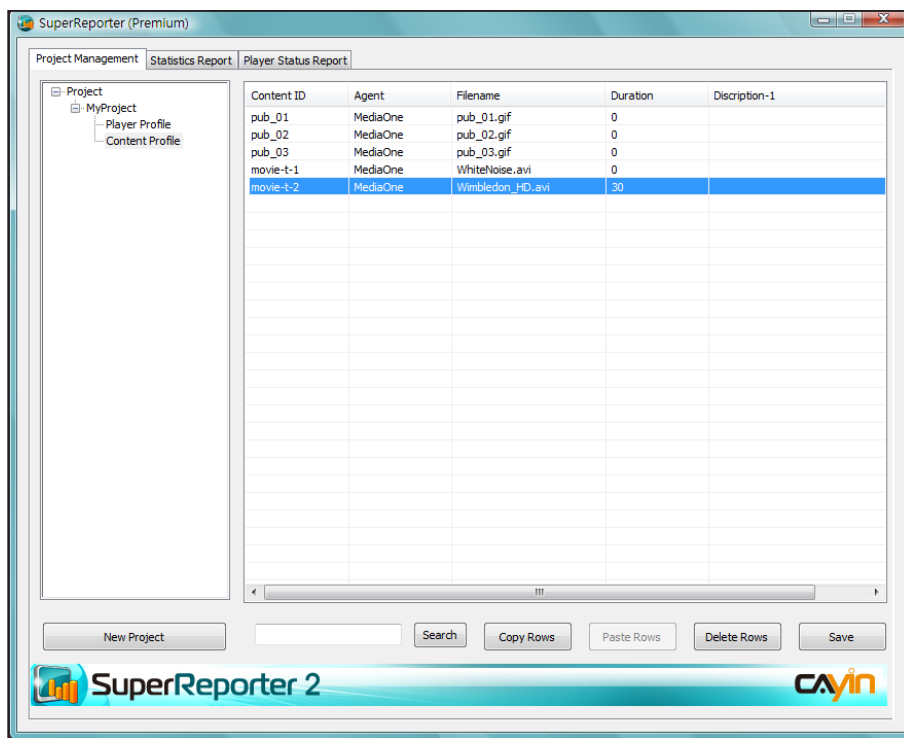
1. Click on tree node **'Content Profile'**. You can see the fields on the right.
2. Double click on field **'Content ID'**, and enter an ID according to your own rule. Please note each Content ID must be unique.
3. If you want your content files to be grouped for report generation later, please fill in the **"Agent"** field. In **'Statistic Report'**, content files will be grouped by each individual **'Agent'**. If you do not need this function, please leave this field blank.
4. Enter content's filename (e.g. **'pub\_01.gif'**). SuperReporter 2 will use this filename to trace playback and billing records in the collected logs. You can omit file extension name (e.g. **'gif'**) here.



**NOTE**

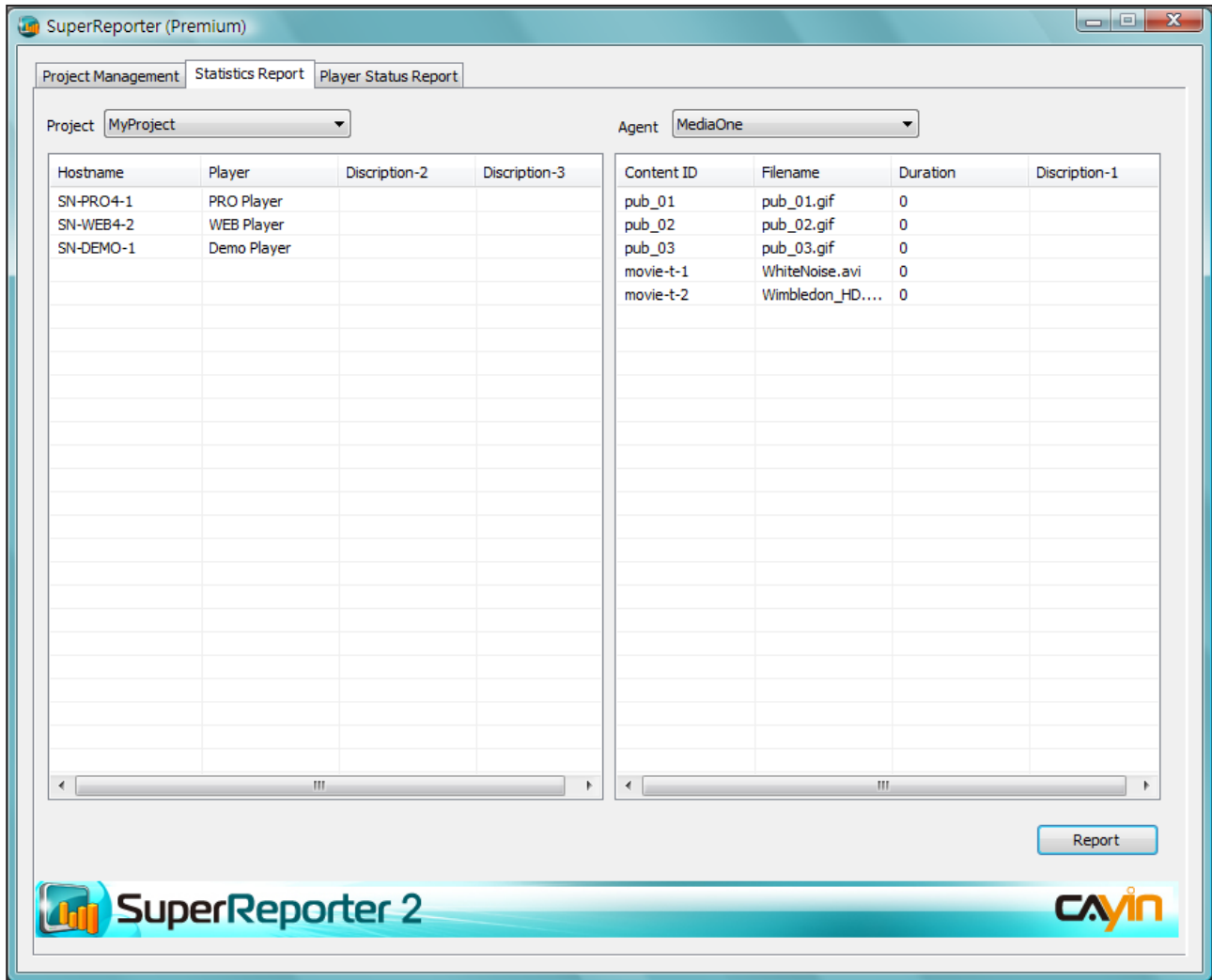
If you leave this field blank, SuperReporter uses the actual playback time to calculate the duration. Due to the unavoidable program execution error, actual playback time may have little difference each time.

5. Enter playback duration (by seconds) of multimedia files. For example, a video file playback time is 10 seconds, enter 10.
6. Click **[Save]** to adopt all the changes.



## 6. Statistics Report

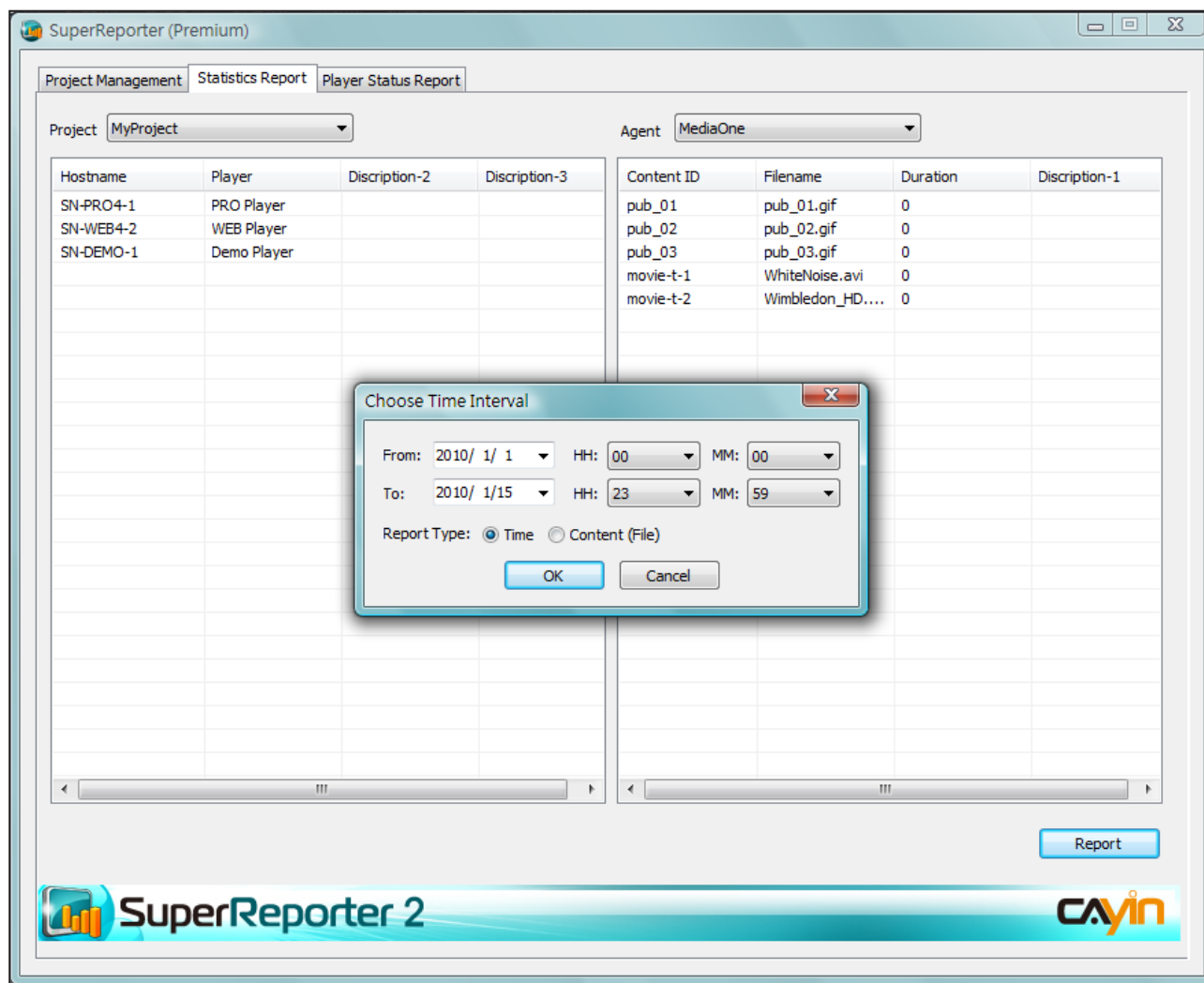
You can generate detailed playback lists and statistics per project by using **Statistics Report**.



Follow the steps to generate a statistics report.

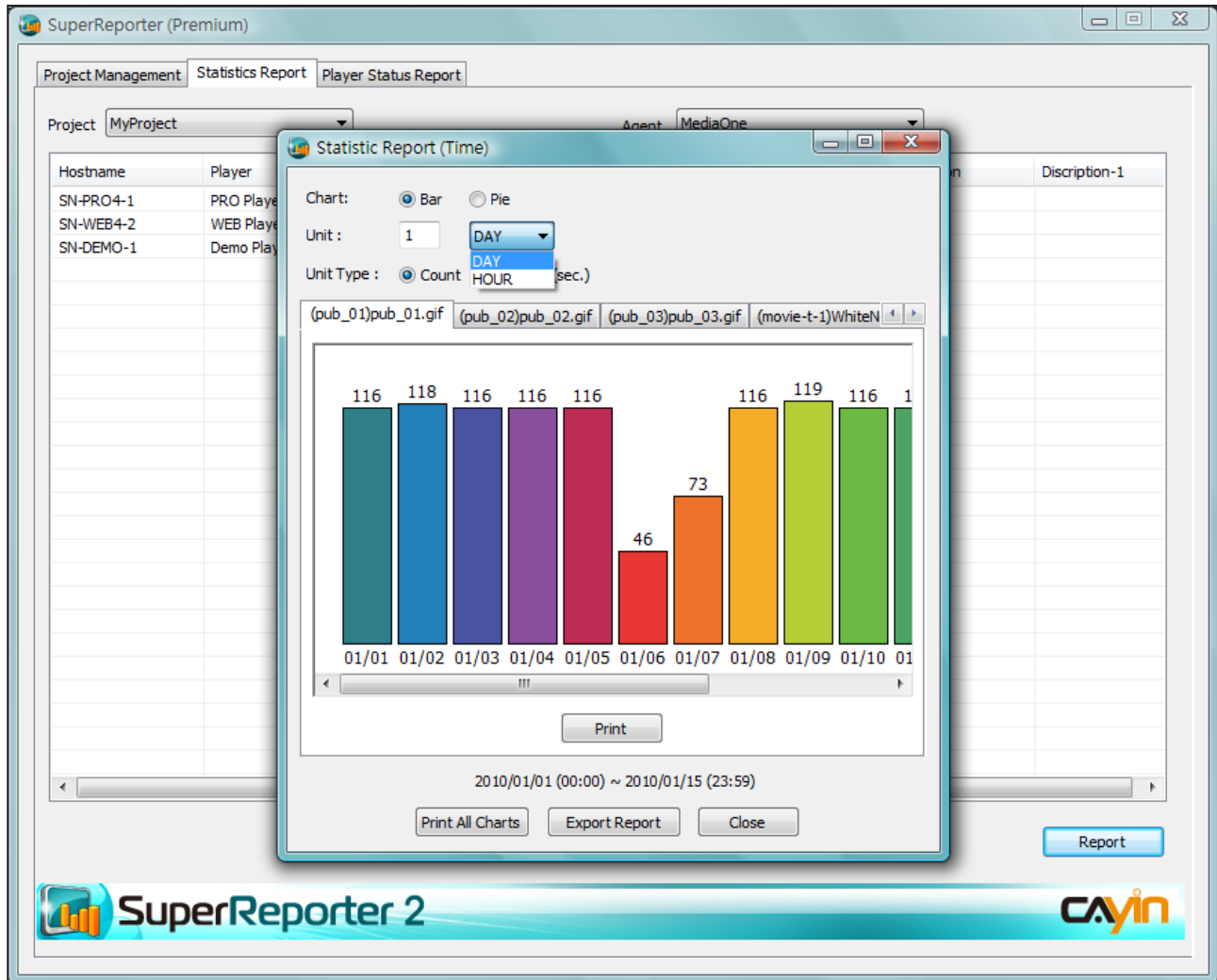
1. Click on '**Statistics Report**' page, and choose a project on the left menu and an agent on the right menu.
2. Choose one or more players on the left window and one or more content files on the right window. If you select nothing on the left or right window, it means you want to generate reports for all players or all content files.

3. Click [**Generate report**] button. You will see a pop-up window. Please choose the “**From**” and “**To**” dates and time for the report you want to generate separately. Here you can also choose if you want your report to be generated “**by Time**” or “**by Content (File)**”. Click [**OK**] to continue.



## Report type: by time

If you choose “**time**” as your report type, you will see a pop-up window below:



1. Here you can choose “**Bar**” or “**Pie**” as your chart type. Then, enter a number and select “**Day**” or “**Hour**” to indicate how you want your report to be shown. If you choose “**Day**”, then every section (Pie Chart) or bar (Bar Chart) represents statistics per day; if you choose “**Hour**”, then every section (Pie Chart) or bar (Bar Chart) represents statistics per hour. You can enter the number you want to create your personal report.
2. Choose the “**Unit Type**” for your report. You can choose “**Count**” to show the playback times of each section or “**Duration**” to show the playback time of each section.

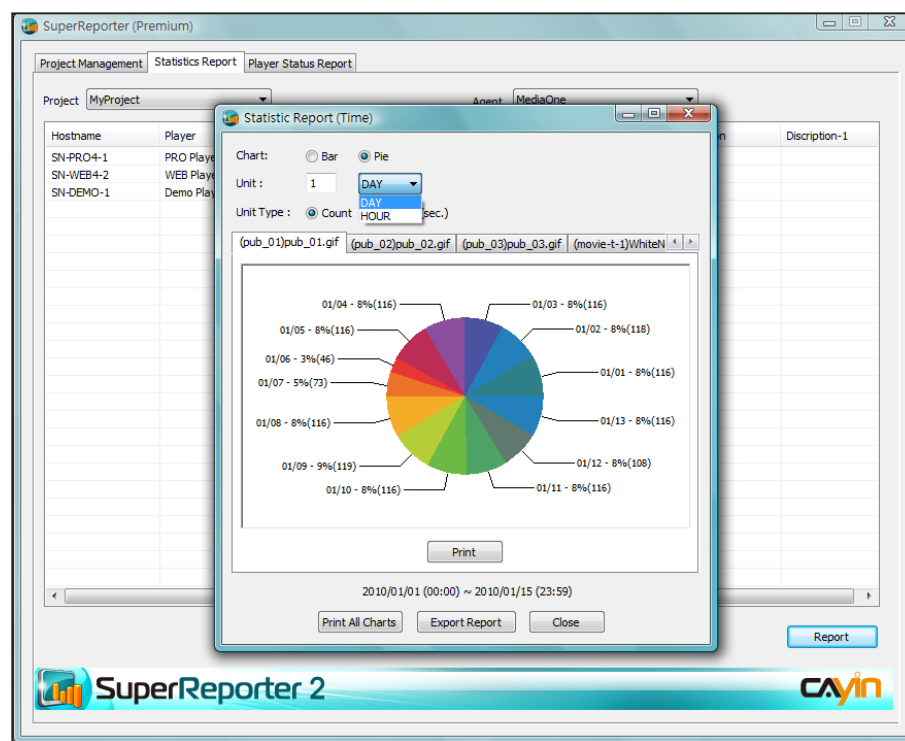
3. If you want to print out your report, please click [**Print**]. You can also choose [**Print All Chart**] or [**Export Report**] according to your requirement.
4. Click [**Close**] to finish.

### NOTE

If you choose “**Content (File)**” as your report type, the report will be generated by each content (file) only but not by “**day**” or “**hour**”

### Report type: by content (file)

If you choose “**Content (File)**” as your report type, you will see a pop-up window below:

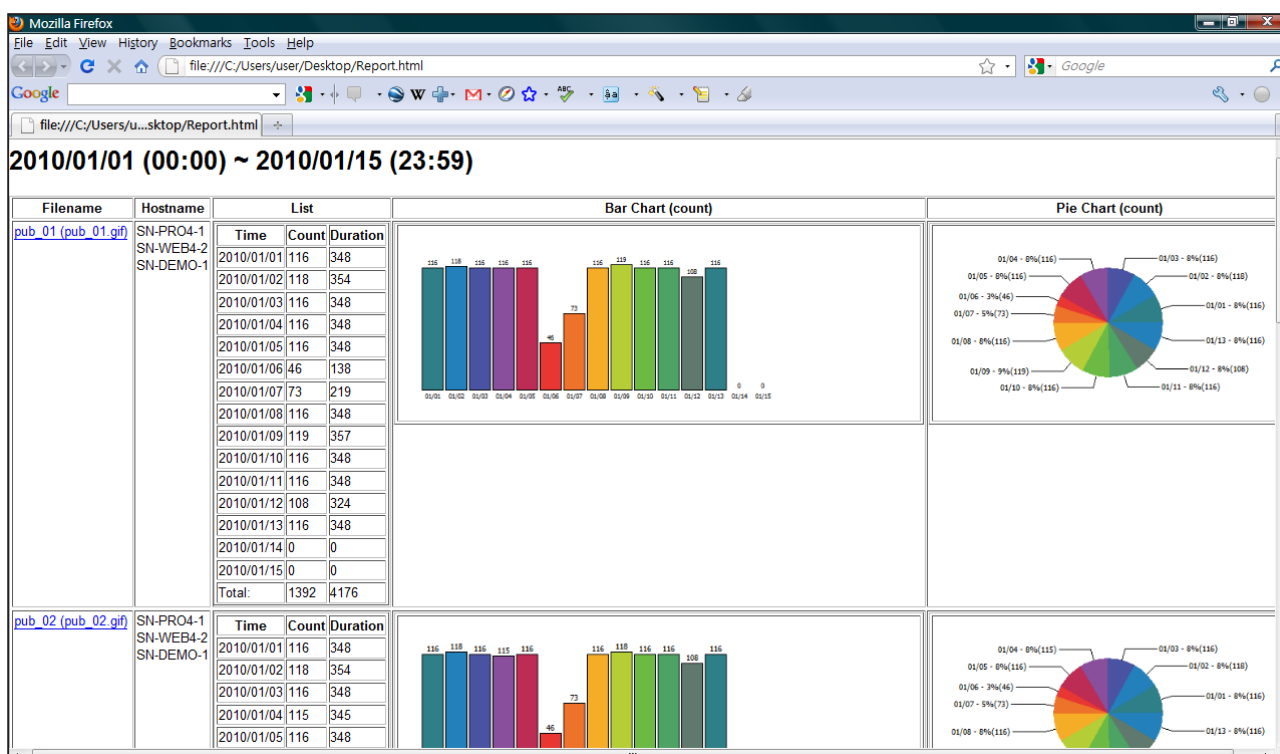


1. Here you can choose “**Bar**” or “**Pie**” as your chart type.
2. Choose the “**Unit Type**” for your report. You can choose “**Count**” to show the playback times of each section or “**Duration**” to show the playback time of each section.
3. If you want to print out your report, please click [**Print**]. You can also click [**Export Report**] to export your report.
4. Click [**Close**] to finish.

After the report is generated, all HTML and Excel files of this report will be stored in a folder which you just created. You can open the saved HTML file by your Browser (e.g. IE or Firefox) to see the report. You can also open the Excel file (.xls) for detailed data and conduct further analysis.

Book1 - Microsoft Excel

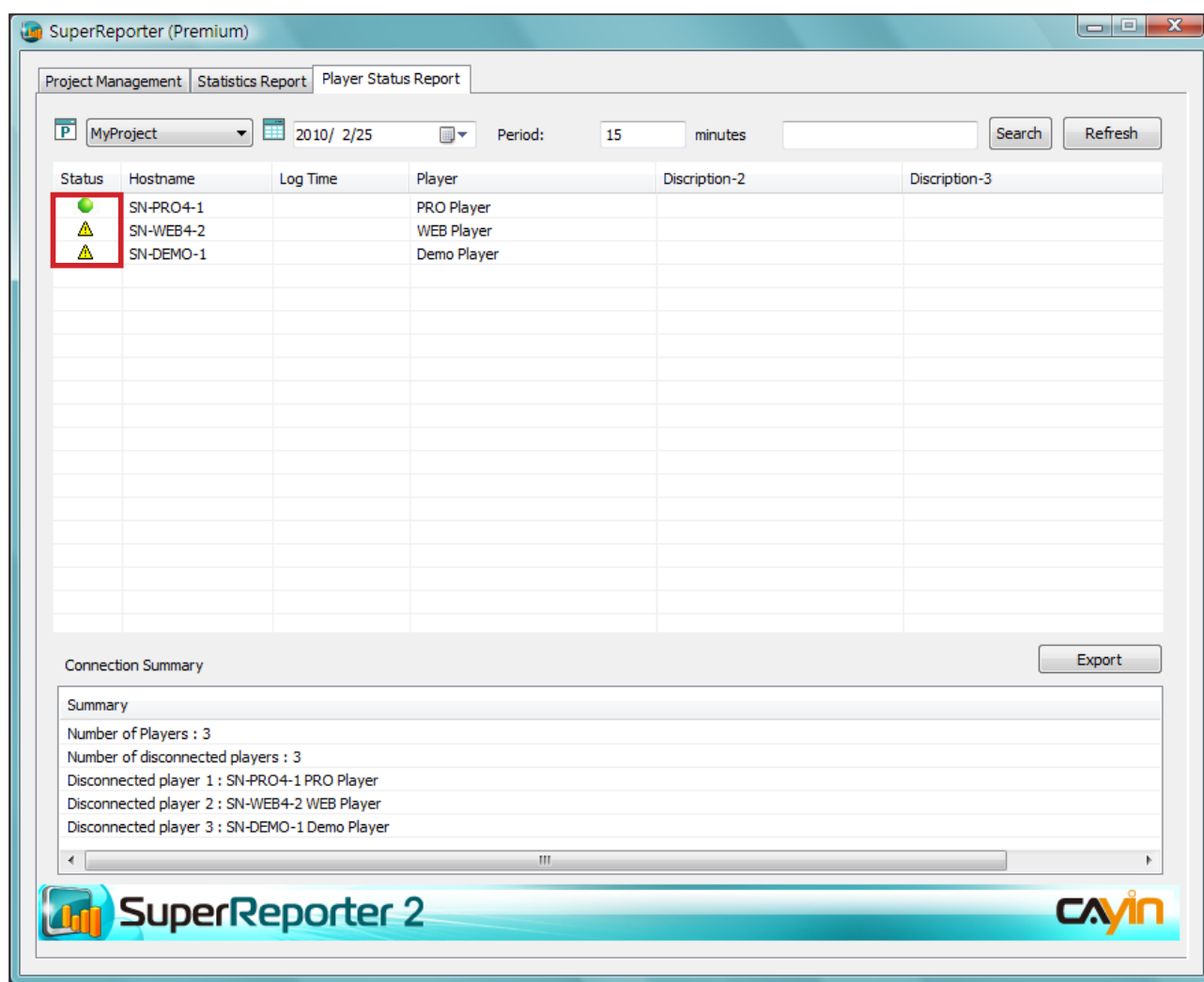
	A	B	C	D	E	F	G	H	I
1	Hostname	Time	Content ID	Filename	Duration	Discription-1			
2	SN-WEB4-2	00:06:54	movie-t-1	WhiteNoise.av	114				
3	SN-WEB4-2	00:13:52	movie-t-1	WhiteNoise.av	114				
4	SN-WEB4-2	00:20:49	movie-t-1	WhiteNoise.av	114				
5	SN-WEB4-2	00:27:46	movie-t-1	WhiteNoise.av	115				
6	SN-WEB4-2	00:34:43	movie-t-1	WhiteNoise.av	115				
7	SN-WEB4-2	00:41:39	movie-t-1	WhiteNoise.av	115				
8	SN-WEB4-2	00:48:36	movie-t-1	WhiteNoise.av	115				
9	SN-WEB4-2	00:55:32	movie-t-1	WhiteNoise.av	115				
10	SN-WEB4-2	01:02:29	movie-t-1	WhiteNoise.av	115				
11	SN-WEB4-2	01:09:26	movie-t-1	WhiteNoise.av	115				
12	SN-WEB4-2	01:16:22	movie-t-1	WhiteNoise.av	115				
13	SN-WEB4-2	01:23:18	movie-t-1	WhiteNoise.av	115				
14	SN-WEB4-2	01:30:14	movie-t-1	WhiteNoise.av	114				
15	SN-WEB4-2	01:37:11	movie-t-1	WhiteNoise.av	114				



## 7. Player Status Report

Assuming that successful log receiving represents normal functioning of the SMP players, SuperReporter 2 can also display connected SMP players' status of a specific project and date by monitoring their log receiving status.

1. Select project, date (today as default), and '**Status Period**'.
2. You can check log receiving status here. If SuperReporter receives player's log records normally, it will display green sign in front of the hostname. If SuperReporter cannot receive an SMP player's log record within the '**Status Period**', then the player status will be shown as abnormal with a warning sign. Such abnormal status may be caused due to network problems, system malfunction or shutdown of SMP players. If you see the warning sign, please proceed to verify and solve the problems. All SMP players' status will be shown below as a summary in the '**Connection Summary**' area.

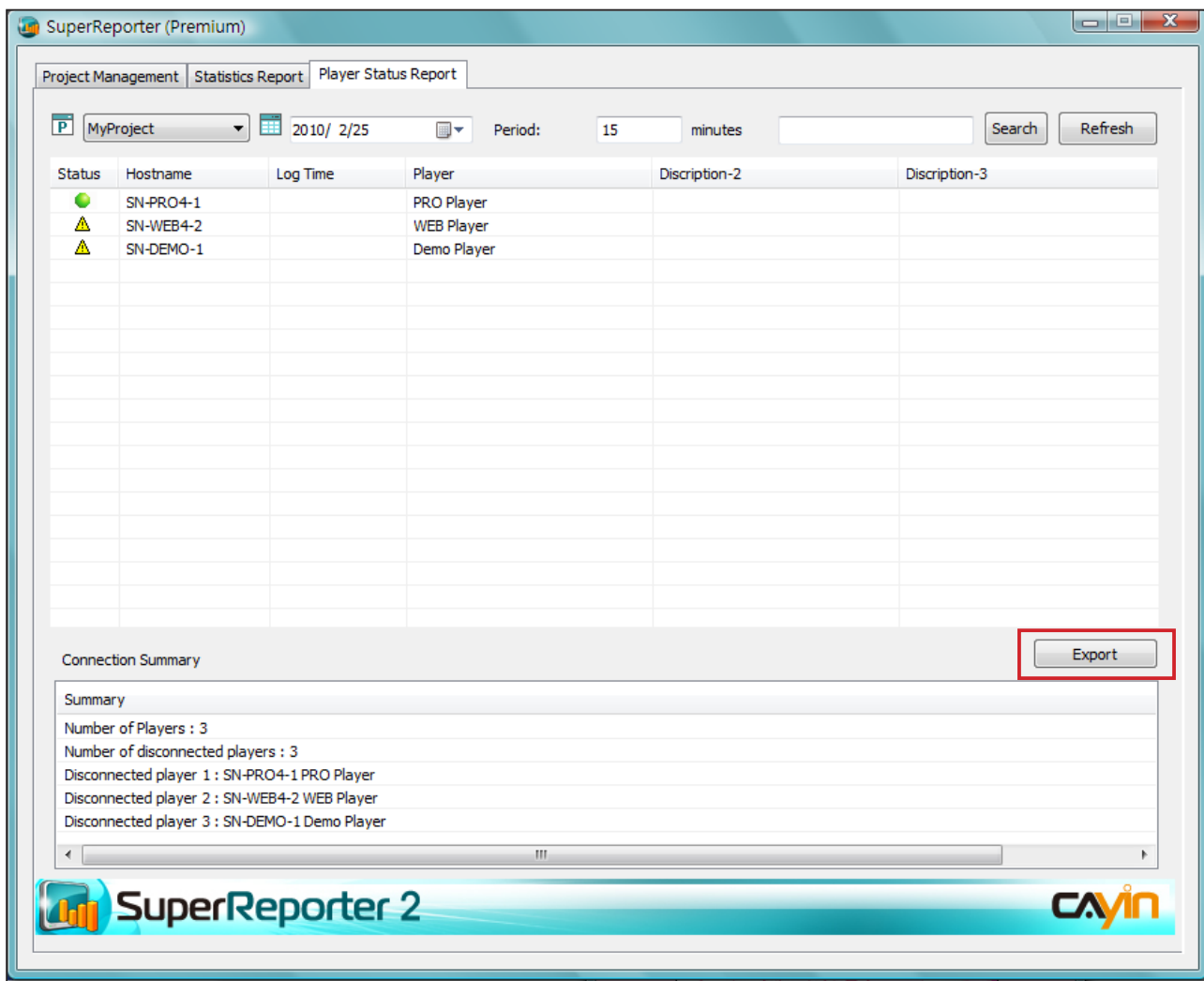




## 7-2 Export Connection Summary

Please follow the steps below to generate and export '**Connection Summary**' for your project.

1. Click '**Player Status Report**', and select a project and the date you want to generate the report.
2. Click [**Export**] to export and save the connection summary.



**NOTE**

cyrm.exe can only generate reports "**By Time**".

## 8. Generate Report by Command-line

'**cyrm.exe**' is a program that generates reports by DOS command-line. Incorporating with batch files or Windows Schedulers, SuperReporter 2 can automatically send reports daily or weekly. The following table includes the parameters that you need to configure by command-line while using '**cyrm.exe**'.

### 8-1 Use cyrm.exe and parameters

1. Go to '**Start > All Programs > Accessories > Command Prompt**' to open DOS command-line window.



2. Execute (example): "**C:\program files\cayin\super reporter\cyrm.exe**" parameter1 parameter2.....

**NOTE**

You have to execute the command at the same path as cyrm.exe

**Example:**

On February 1st, if you want to generate a report of project '**site-taipei**' including data from January 1st to January 31st and also send it to marketing staff and save a copy into your PC, the command can be issued as the follows:

```
cyrm -l -c -d 31 -i -p "site-taipei" -o e:\test -m marketing@your-company.com -s smtp.your-company.com -u username;password
```

Parameters	Example	Description
-p "project name"	-p "Taipei Project"	Name of project
-m recipient1;recipient2;...	-m user1@yourcompany.com	Recipients' email address. Use semicolon, " ; ", to separate them if several.
-o "path to save a copy of report"	-o c:\report	<b>[Optional]</b> Folder to save a copy of report. This folder should be an existing one.
-s "smtp server"	-s smtp.yourcompany.com	SMTP server IP or domain name
-u username;password	-u mis;mis_password	<b>[Optional]</b> If SMTP server needs username and password for sending email, include them here.
-t "Email subject"	-t "Weekend Report"	<b>[Optional]</b> Email subject
-l	-l	Generate ' <b>Player Status Report</b> '
-e [n minutes]	-e 15	<b>[Optional]</b> Specify ' <b>Status Period</b> '. It must be used with '-l'together.
-c	-c	Generate statistics report
-d [n days]	-d 5	Generate statistics report including data from ' <b>n</b> ' days ago to today. If today is March 10th and given -d 5 here, the program will generate a report including data from March 5th to 10th, for totally " <b>n+1</b> " days.
-r [duration   count]	-r duration	<b>[Optional]</b> You can choose the unit type as " <b>duration</b> " or " <b>count</b> " by this option. If you do not specify a setting here, system will use duration as default type.
-i	-i	<b>[Optional]</b> While using parameter -d, adding -i will make the report except today in it. For the above example, if you use ' <b>-d 5 -i</b> ', the report will include data from March 5th to 9th for totally " <b>n</b> " days.

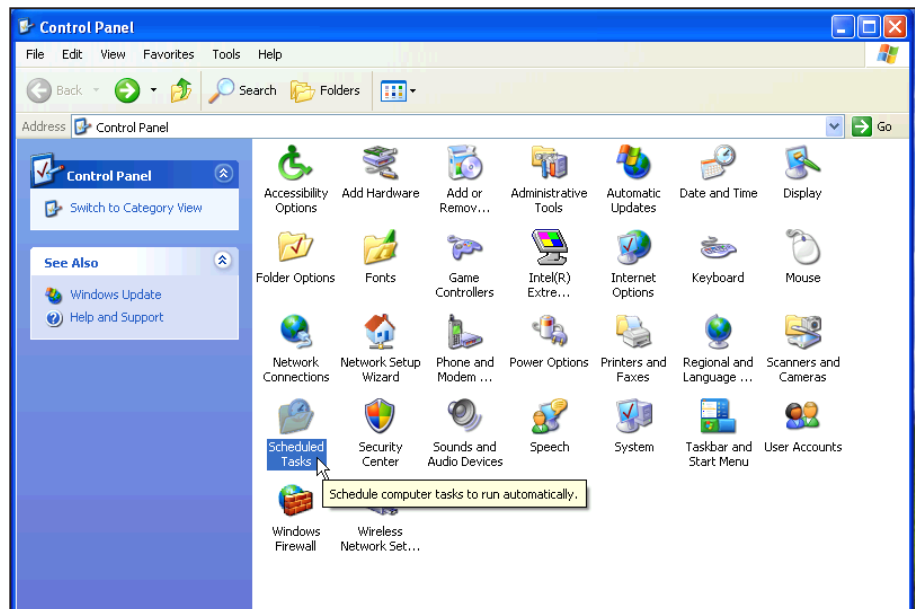
## 8-2 Use 'cym.exe' with Windows Scheduled Tasks

### NOTE

"**Windows Scheduled Tasks**" is a tool that you can schedule any scripts, program, or document to run at a time that is most convenient for you. Scheduled Tasks starts every time you start Windows and runs in the background, and it starts each task that you schedule at the time that you specify when you create the task.

**Windows Scheduled Tasks** and '**cym.exe**' can be incorporated with SuperReporter 2 to automatically and periodically generate reports.

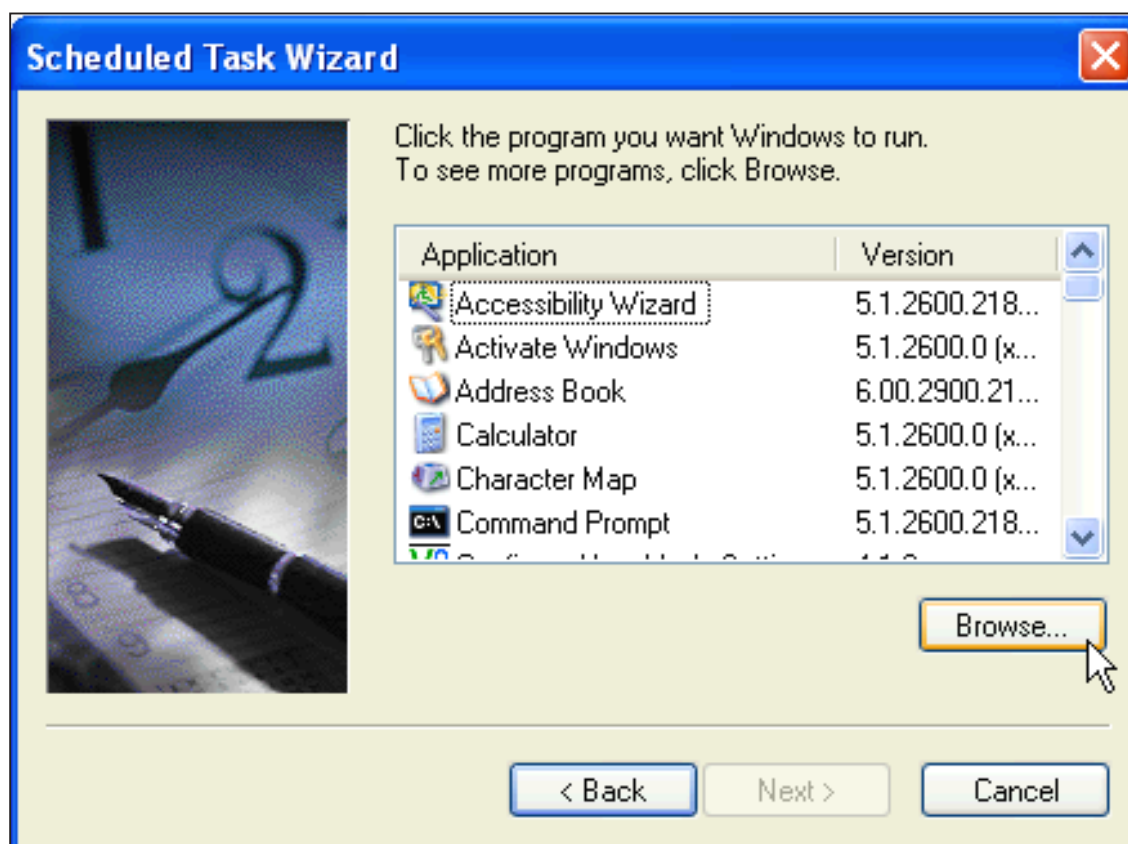
1. In Windows Control Panel, run '**Scheduled Task > Add Scheduled Task**'.



2. Double click on [**New Task**].



3. Click on [**Browse**] to locate 'cyrn.exe'.



4. Enter a task name, click [**Next**].



5. Specify a schedule here.



#### NOTE

A password is required for the Windows account access. Otherwise, Windows Scheduler may not work.

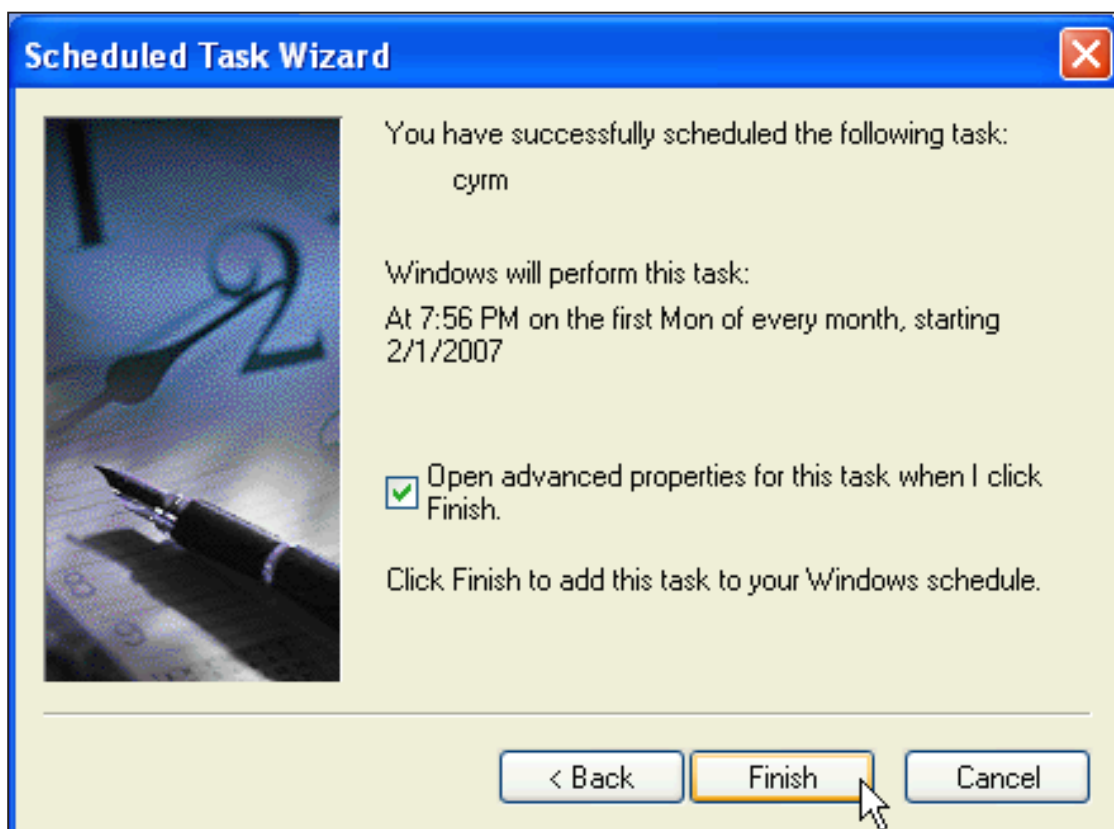
6. Enter your Windows username and password.



#### NOTE

You can write a **"batch file"** to execute multiple tasks. Assign Windows Scheduler to execute this batch file at a specific time; then SuperReporter will generate reports automatically.

7. Check on **'Open advanced properties for this task when I click Finish'** and click **'Finish'**.



8. In the advanced dialog window, enter the "**cyrm.exe**" file in the '**Run**' field (**Task > Run**).

Click [**OK**] to complete the task setting.

