

IP Kamera 9070CS-PoE

User Manual



With PoE

Release Date: 10/20/2009

Manual Version: 1.3

Warning: Any changes made to this equipment without permission may cause damages to the device!

IMPORTANT NOTICE

1. IP Kamera 9070-CS was designed for indoor use, the manufacturer responsibility for possible damages caused by outdoor use, especially in the rain.
2. Please use the power adapter provided by the dealer, the manufacturer responsibility for the possible damage from using power adapters not .
3. Do not shake the IP Kamera 9070-CS in any fashion
4. Please contact the dealer If IP Kamera 9070-CS is not working properly.

Copyright © 2008 All rights reserved. No part of this publication may be reproduced, stored in a retrieval system, or transmitted in any form or by any means, electronic, mechanical, photocopying, recording or otherwise, without the prior written consent of us.
All trademarks and products mentioned in this document are the properties of us.

Table of Content

1.) WELCOME.....	6
INTRODUCTION.....	6
MINIMUM SYSTEM REQUIREMENTS	7
2.) PRODUCT OVERVIEW	7
FEATURES.....	7
SPECIFICATION	7
PACKAGE CONTENTS.....	8
LENS SPECIFICATIONS.....	8
3.) INTERFACE DESCRIPTION	9
REAR PANEL VIEW	9
4.) HARDWARE SETUP.....	10
POE ROUTER TYPE	10
INTERNET ACCESSIBLE SETUP	10
THE NETWORK USES A ROUTER/FIREWALL TO CONNECT EACH DEVICE TO THE INTERNET	11
BY USING STATIC IP ADDRESS PROVIDED BY THE ISP.....	11
CS LENS.....	12
CONNECTING THE DEVICE	12
SD CARD.....	12
5.) SOFTWARE SETUP	12
SOFTWARE FOR IP KAMERA9070-CS POE	12
SOFTWARE FOR IP KAMERA 9070	12
INSTALLING VLC CODEC	14
USING IP EDIT.....	14
QUICK EASY SETUP (RECOMMENDED)	15
CUSTOM SETUP (ADVANCE USERS).....	16
IP SERVICE	19
6.) WEB INTERFACE.....	20
CONNECTING TO THE 9070-CS	20

THE CONTROL CONSOLE	22
LIVE VIDEO	23
TYPE AND ZOOM.....	23
MOTION DETECTION	24
ACTIVE RECORD	24
RECORD	24
SNAPSHOT	25
IMAGE	25
AUDIO.....	26
IMAGE	26
IMAGE SETTINGS.....	26
TUNE IMAGE	28
NETWORK	29
NETWORK.....	29
FTP	30
SMTP (OUTGOING E-MAIL SERVER)	30
SNTP	31
IP SERVICE.....	31
SYSTEM	32
DATE AND TIME.....	32
TIME STAMP	32
USER	33
AUDIO.....	33
LANGUAGE.....	33
UPDATE.....	34
EVENT LOG	37
APPLICATION	37
SETTING	37
SCHEDULE RECORD	44
ALARM.....	45
EPTZ-SET.....	47
HOW TO USE EPTZ WITH THE MOUSE.....	47
HOW TO ENABLE AND USE EPTZ CONTROLLER	47

7.) CONTROLLING THE DEVICE..... 48

CGI HTTP COMMANDS	48
SNAPSHOT COMMAND:	48
CHANGE NAME:	48
CHANGE IP ADDRESS:.....	48
CHANGE PORT:.....	48
CHANGE SUBNET MASK:	48
CHANGE GATEWAY:	49
CHANGE DNS:	49
MJPEG STREAMING.....	49

8.) USING RTSP WITH VLC 49

9.) USING CNT WITH SURF16 CH 52

FINDING THE MAC ADDRESS 52

ADD DEVICE USING CNT 52

10.) FREQUENTLY ASKED QUESTIONS (F.A.Q)..... 53

1.) Welcome



Introduction

The IP Kamera9070-CS PoE provides reliable, high quality solution to IP Cameras. Its distinctive 720P HD quality picture, Tri-mode video capability, SD memory storage, RTSP broadcasting capability, internal microphone and many more functions makes this small device very powerful and unique. Using innovative IP technology, the built in web server of the IP Kamera9070-CS PoE will allow you to view your IP Kamera from any remote locations around the world while bringing you world class surveillance and ease of mind. Furthermore, with CNT technology the9070-CS PoE is easy to setup & use, simply just plug and play.



Minimum System Requirements

CPU Minimum Requirements

- Intel(R), Pentium(R), DUAL Core (D), CPU 3.0GHz or equivalent
- Operating Systems: WINDOWS Operating Systems (IE5.0+SPI)
- 512 MB system memory or above
- Video Card: 3D hardware accelerator card required – 100% DirectX 9.0c compatible
- 10/100 Ethernet switch/hub
- Sound Card: DirectX 9.0c compatible sound card
- Ethernet network port/card
- Network cable
- Internet (For remote access) or Ethernet Network (Internal Network use) with some type of Internet connection, (i.e. ADSL, Cable, Dial up or any other forms of Internet service)

Software

- VLC media player 0.8.6b or above.
- Windows XP Service Pack 2 or above.
- Resolution of screen setting: 1280x960 or higher for the display of 720P

2.) Product Overview

Features

1. Compatible with all standard 1/3" CS lens
2. Tri-Mode Camera (MPG4-1/MPEG4-2/M-Jpeg)
3. Advance Motion detection trigger AVI /Jpeg save on FTP / SD card or Email
4. 3 layers (Admin, Operator, and User) Password protected
5. Resolution from CIF 352x192 up to **HD 1280x720P**
6. Supports NTP protocol to get correct time schedule.
7. 1/2.5" Advance CMOS sensor, with highly sensibility for quick response insufficient lighting.
8. Supports HTTP CGI command set. Easy for system integration
9. IP Service Search utility, to find your IP Kamera on internet with ease
10. Watchdog / Event log design
11. Adjustable frame-rate, bit-rate, rate-control type, quality factor for best image quality and speed.
12. Supports date and time marking on the captured video, and also inserted streamed data.
13. Measured End-to-End latency is less than 150ms
14. Supports adjustable backlight, brightness, contrast, saturation & sharpness
15. TV Output capabilities
16. Automatic alarm recording buffer
17. CNT Technology – Just Plug and Play no need to port forward
18. EPTZ – Electronic Pan, Tilt, and Zoom
19. 2 GB SD Memory Storage – Add convenience and storage
20. Scheduler recording capabilities
21. Email Capabilities
22. Alarm Recording Buffer
23. Supports: HTTP Web Server (HTTP), SSL, FTP client, SMTP client, NTP client, DHCP client, UPnP client, RTSP over UDP, RTP

Specification

Casing: Reinforced Aluminum

Case Color: Metallic Silver Purple

Weight: 363.7 g

Dimensions (W x L x H): 5.5cm x 16cm x 5cm





Operating Conditions: 5 – 50 °C (41 – 122 °F)

Storage Conditions: Humidity 20 – 80% RH

Power: AC Adaptor

Input: 100-240V~0.3A MAX 10-20VA, 50-60Hz

Output: +12V ! 1.0A Max 5W

Package Contents	
1.)9070-CS PoE Unit x 1 (Without Lens)	
2.) CS Lens Lens Specifications <ol style="list-style-type: none"> 1.) Format: 1/3" 2.) EFFL: 6MM 3.) Image Space F#: F1.2 4.) Field Angle: 58 degree 5.) Stop: Fixed 6.) Focus Extension: 20cm--∞ 7.) Mount; CS 8.) Outside dimensions: \varnothing 30 x 31.7 	
3.)9070-CS PoE Installation CD	
4.) AC Adaptor	(One AC adaptor will be included and will correspond to the countries power standards) Specs: Input: 100-250Vac /47-63Hz, 1A Output: 12Vdc/1A Max: 12W
5.) RJ45 Cable x 1 (Optional)	
6.) 2 GBSD Card	
7.) Camera Mounting Bracket	

3.) Interface Description

Rear Panel View

Rear View



SD Card	The IP Kamera9070-CS PoE comes with a 512 MB SD Card
Reset Button:	Reset to Manufacturer Default: Hold Reset button for 5-10 Seconds and the device will reset to manufacturer default
Video Out:	The Video out requires a BNC connector to output video to a different source.
RJ45 Ethernet:	Plug in the RJ45 Ethernet cable to the Ethernet port
DC 12 V Power Input:	Plug in the Power Adapter to the DC 12V

4.) Hardware Setup

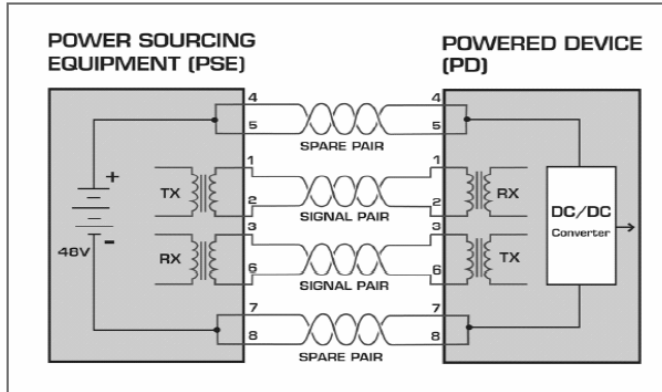
*Before setup the device make sure of the following:

- 1.) Make sure that all the package contents are all included
if anything is missing please contact the store or your distributor.
- 2.) Make sure the power adaptor is the correct specification.
- 3.) Make sure that all the cables are working correctly

PoE Router Type

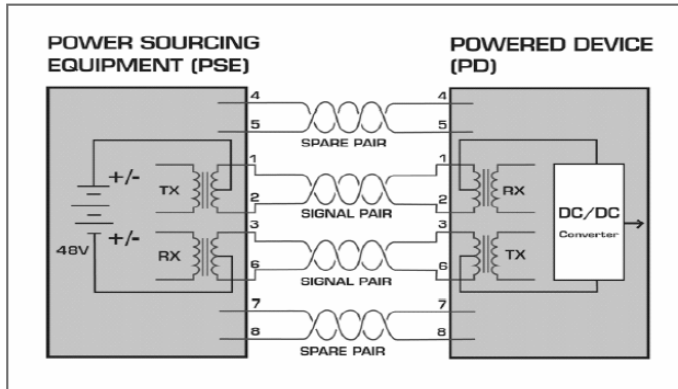
The 9070CS-PoE can use all standards of PoE Routers.

Option 1:



Power can be sourced from the PSE through spare lines in the CAT-5 cable

Option 2:



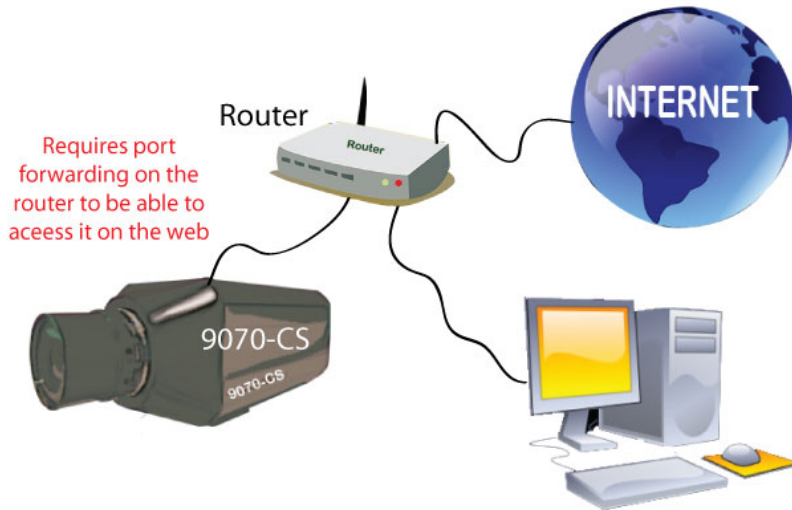
Power can be sourced from the PSE through the data lines via data transformer center taps

Please view the pictures below for reference.

Internet Accessible Setup

The internet connection can be setup in two main ways so that the 9070-IR can be accessed through the internet

The network uses a Router/Firewall to connect each device to the internet



In this case, the 9070-IR will need to be port forwarded on the router so that it can be accessed by the internet.

For example

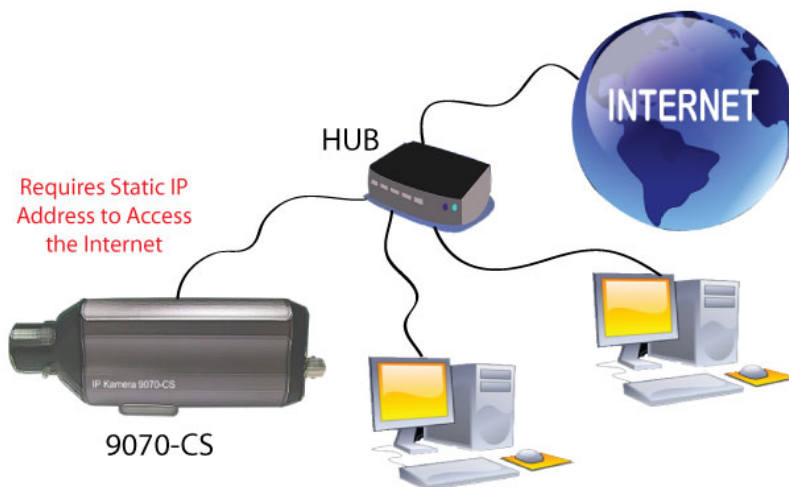
9070-IR IP Address: 192.168.1.882

9070-IR Port: 9070

On the router that is being used port forwarded (port triggered) IP Address 192.168.1.882 and port 9070. For this section you may be required to refer the user manual for the router due to the fact that each router has a different way of setting up the device.

Note: Please refer to page: 43 on how to use CNT (Cross Network Technology). With CNT no port forwarding is required to view the camera. But for normal functionality please use the web browser to view the camera.

By using static IP Address provided by the ISP.



In this case, the 9070-IR is being connected to the internet through a hub, which is different from a router. The hub does not provide DHCP, and therefore would require that this setup have a static IP Address that is provided by the ISP.

Contact the ISP to find out the static IP address so that your device can be accessed through the internet. Once a Static IP has been assigned the device will be able to automatically go onto the internet. .

CS Lens

- 1.) Carefully remove the lens from the box and the IP Kamera9070-CS PoE.
- 2.) Remove the cap from the IP Kamera9070-CS PoE.
- 3.) Remove the back cap from the lens
- 4.) Then slowly screw in the lens to the IP Kamera9070-CS PoE in a clockwise direction to tighten.
- 5.) Finally Remove the front lens cap.
- 6.) Loosen the lens focus screw and adjust the lens to your own liking. Turn the screw counterclockwise to loosen and clockwise to tighten the focus
- 7.) Adjust the lens to your own special requirements.



Connecting the Device

- 1.) Connect the IP Kamera 9070 to a HUB or Router with a RJ45 network cable.
- 2.) Connect the HUB or Router to the internet (May through ADSL/XDSL modem).
- 3.) Connect the power adapter to the DC 12V port of IP Kamera 9070.

SD Card

Simply place the SD card in the back of the9070-CS PoE with the face of the SD card facing down.

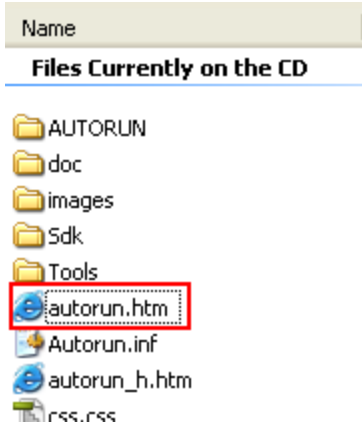
5.) Software Setup

The software for the device is located on the **Media Link-IP Family CD** that came with the device. IP Kamera Pack is located on the main page of the CD. Please follow the directions carefully and install the necessary files

Software for IP Kamera9070-CS PoE

Software for IP Kamera 9070

- 1.) First place the **Media Link-IP Family CD** that came with your device into your CD/DVD Rom drive. The CD should auto run but if it does not go to the CD/DVD Rom drive and select the file "autorun.html".



2.) Select the IP Kamera section and pick the IP Kamera and Model that you are using.



3.) Download the following software and save them to the appropriate locations.

- a. **IPEdit** - Device search tool which allows you to modify IP settings, find your on the local network and IP Service.

b. **Surf 16 CH** – 16 Channel DVR, Monitoring, & Recording Software. Views up to 16 channels on one screen.

4.) Once installation is complete please double click the **IPEdit** to configure and search for your device.

Installing VLC Codec

The files that are recorded by the9070-CS PoE requires this codec so that you are able to view the view. Download the latest version of the VLC codec and install it into your computer. You can find the latest version of the codec from here

<http://www.videolan.org/>

Using IP Edit

IPEdit is a search tool designed to setup and access the IP Kamera9070-CS PoE.

IP Service is an additional feature which searches for the device easily without having to remember long complicated IP addresses. Instead, this technology allows the user find his or her device through the internet just by device name.

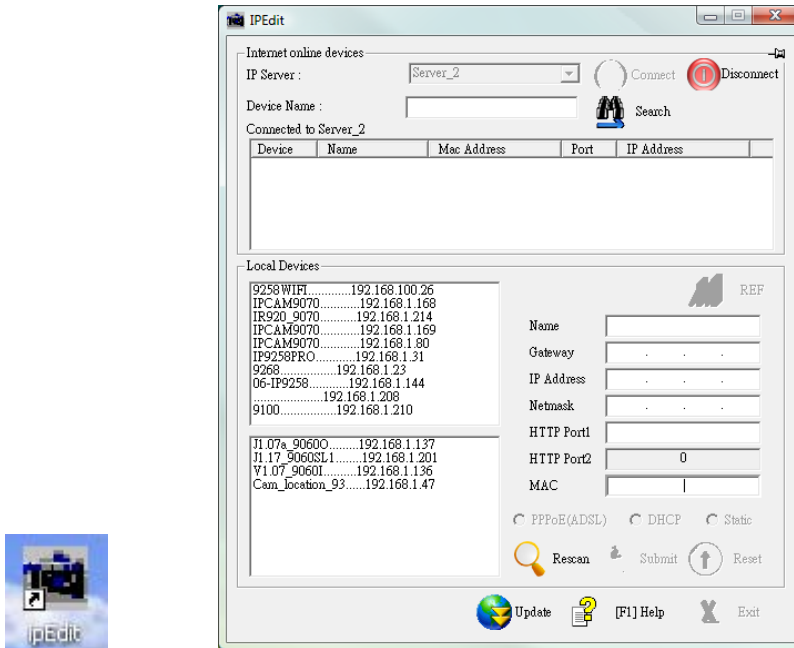
Note: Please allow the IP Kamera9070-CS PoE 1 to load before using IPEdit.

Default IP: 192.168.1.168 (When 9070 is connected to PC directly)

Default Login: Admin

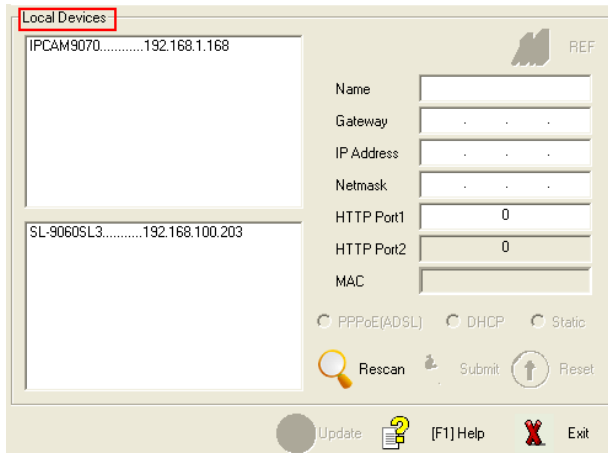
Default Password: 12345678

1.) Double click on the IPEdit icon to run the program.



- 2.) Open IPedit and any device in the same network should automatically be detected and listed in the **local devices sections**.


Note: If the device is not showing up, please hit the rescan button and wait about 1 minute

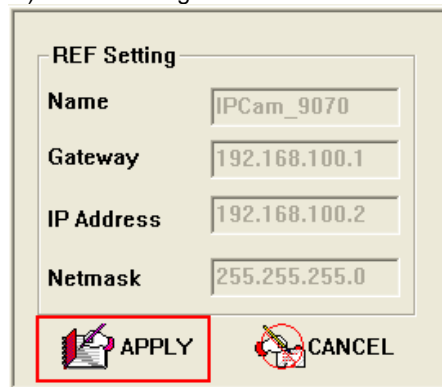


Setup the Device:

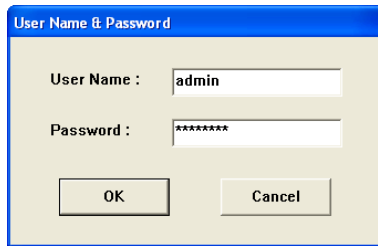
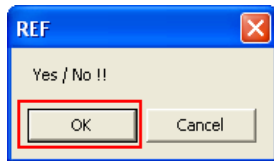
All devices will need to be on the same network if not the device cannot be accessed and will not be detected.

Quick Easy Setup (Recommended)

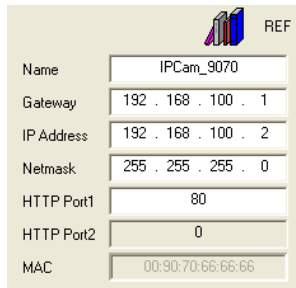
- 1.) Click on the REF button,  and wait a few seconds. IPedit will automatically detect the network settings and setup the device.
- 2.) Once settings have been detected hit the apply button to apply the new settings.



- 3.) Hit yes to confirm and Enter the login and password for the Device to Approve changes



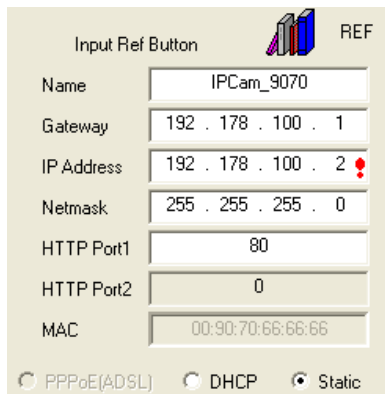
4.) Then hit the rescan button on IPEdit to confirm the changes have been made.



Custom Setup (Advance Users)

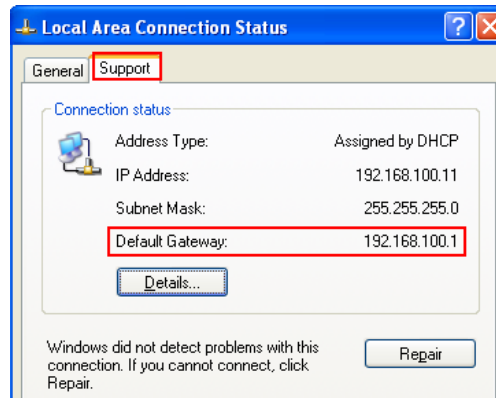
1.) Highlight the device on the local devices section and on the right side of IPEdit all network information on the device will be displayed.

If the device is not on the same network a Red Exclamation mark  will appear in the IP Network information section



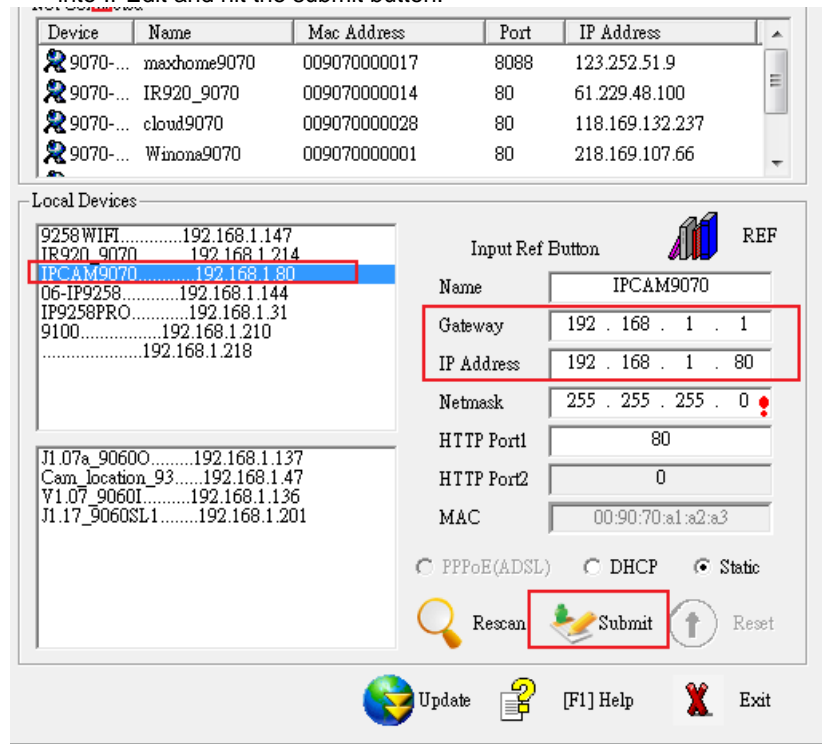
2.) To setup the device, you will need type in the correct **Gateway** and **IP Address**.

The Gateway Address: The gateway address can be obtained in Windows under the network connections page



IP Address: Make sure the first 3 sections of the IP Address matches the gateway address.
 Example: Gateway Address – 192.168.1.1 IP Address – 192.168.1.xxx

3.) Once the Default Gateway information has been obtained, enter the correct information into IPEdit and hit the submit button.



4.) Then hit the rescan button on IPEdit to confirm the changes have been made.

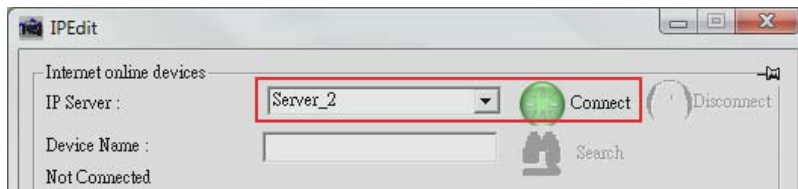
IP Service

How to use IP Service on IPEdit:

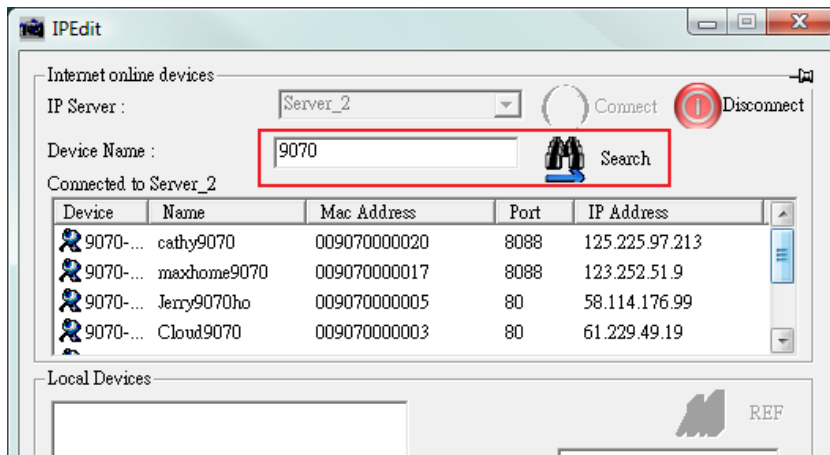
IP service allows the user to directly connect to his / her device through the internet without having to remember long confusing IP Address. Instead you only need to remember the name of the device that the you have selected. Then the user can connect to IP Service, type in the device name, and connect directly to the device.

Note: The IP Kamera9070-CS PoE requires you to select Server 2 on IP Service

- 1.) Open IPEdit, the device will show up in the Local Device Section. If you have not selected a name for the device, please refer to the section on the manual labeled: "Naming your device".
- 2.) To start IP Service, **Hit the green connect button on the top of IPEdit.**



- 3.) Once you have been connected search for your device by typing in at least the first 3 letters that you named your device with. Then hit the search button.



- 4.) Double click on your device and an Internet Explorer window will appear connecting directly to your device.

Note: It is crucial to have the IP Address of the device port forwarded from the router that you are using so you can connect to your device from anywhere. Please refer to your routers user manual on how to port forward your device.

6.) Web Interface

Connecting to the 9070-CS

Once the 9070-CS PoE has been setup correctly and access your IP Kamera 9070-CS PoE. An Internet Explorer browser screen pop up with the login screen.

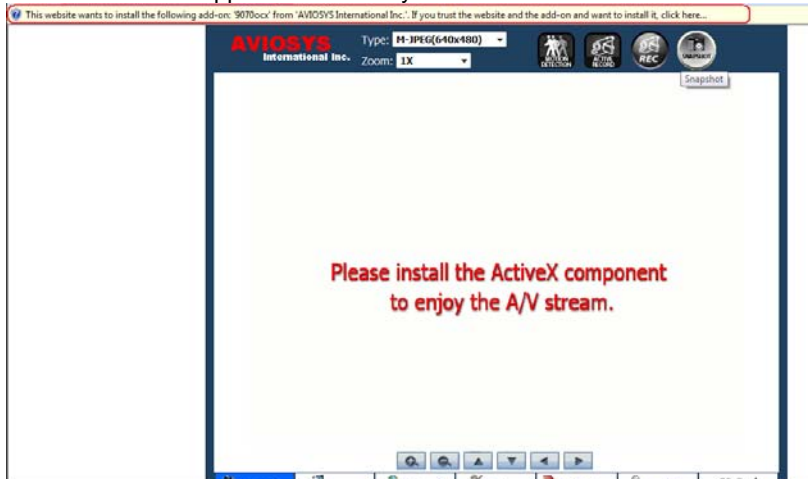


Default IP: 192.168.1.168 (When 9070 is connected to PC directly)

Default Login: Admin

Default Password: 12345678

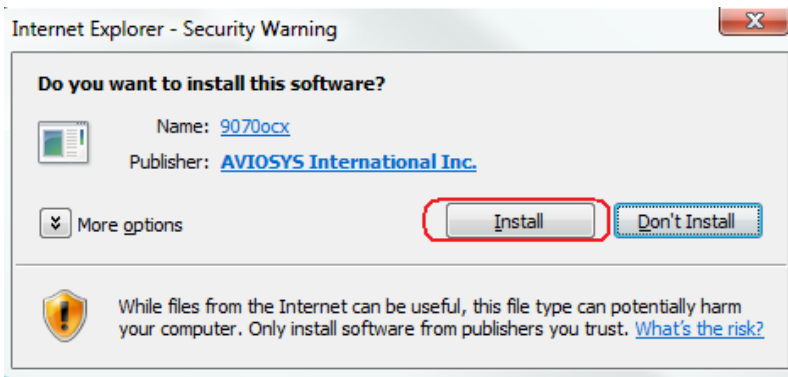
- 1.) After you have logged into the device you will be required to install active x controls. If this screen does not appear make sure you allow active x.



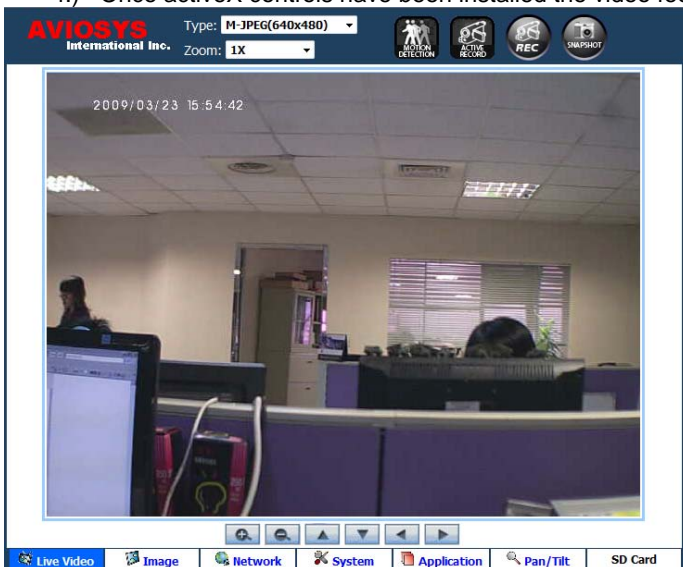
- 2.) Right click on yellow bar and install the activeX controls.



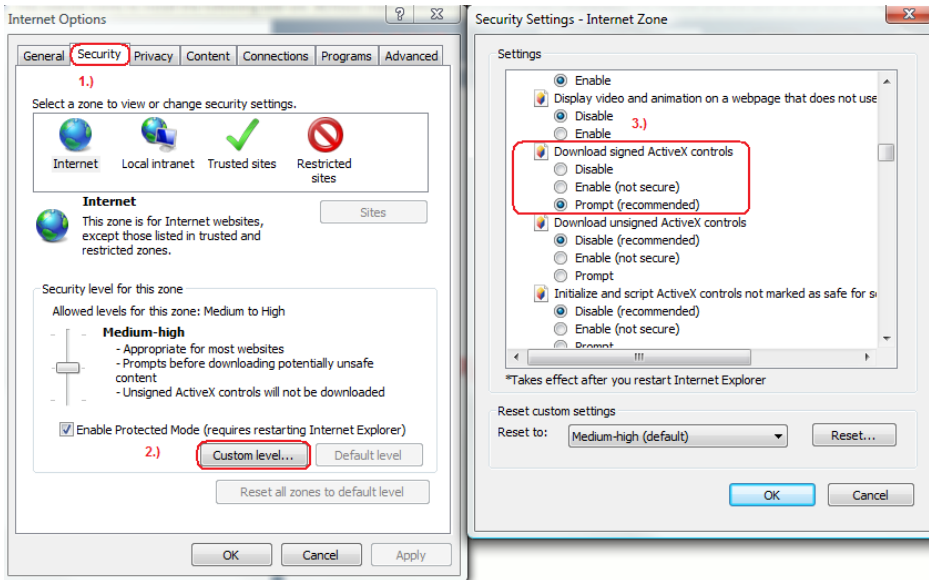
3.) Then click the install button and install the active controls.



4.) Once activeX controls have been installed the video feed will show on the screen



Note: If there is no active x controls that are showing up, please go to internet explorer and enable activeX controls.



The Control Console



The IP Kamera9070-CS PoE Control Console starts in the [Live Video](#) Section of the webpage. In this section navigate to the other options and settings of the 9070-CS PoE

[Live Video](#)

Live Video: The Live Video section allows the user to view the camera, change resolution views,

[Image](#)

Image: The Image section allows you to edit the image settings, including recording / viewing codec, frame rate, image tuning, brightness, contrast, saturation, and etc.

Network

Network: The network section allows you to change the devices network settings, ftp settings, smtp (email) settings, snmp settings, and IP service settings.

System

System: The system section allows you to change the devices date and time, set time stamp for video, users, audio settings, update, event log.

Application

Application: The application section allows you to change the video recording format, ftp storage settings, SD Card settings,

PTZ-Set

EPTZ-Set: The EPTZ allows you to zoom into the cameras image using digital zoom with pan & tilt.

Media Player

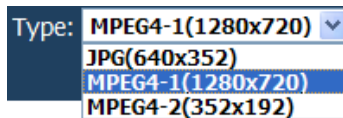
Media Player: The Media player can directly access the files in the built in memory. Each video file & picture can be accessed here and streamed through the internet.

Live Video

The Live video section of the IP Kamera 9070 is where you will live view the video of the device. From here you can change resolution, record onto current pc, take a snapshot, zoom, and detect motion detection.

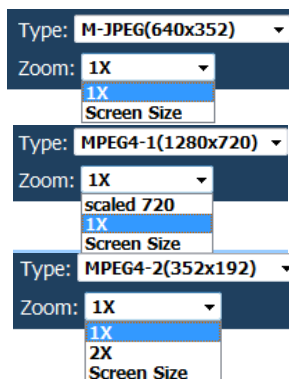
Type and Zoom

Type: The type function allows you to set the streaming format for the IP Kamera 9070. You can select from the following type of resolutions depending on the format type you have set in the image settings.



M-JPEG (640x 352)
MPEG4-1 (1280x720)
MPEG4-2 (352x192)

Zoom: The zoom function allows you to select the screen size of the stream. Depending on the type that you have selected there will be different zooms that will be available.



1X zoom: The 1X zoom is the normal view for each type.

2X zoom: This 2X zoom is 2 times the normal view for that type.

Scaled 720: Is a resolution only available in MPEG-4-1, which sets the picture at 720P.

Screen Size: Will enlarge the image to the who size of the screen. This function is very useful when trying to display on larger monitors.

Motion Detection

Motion Detection: The motion detection icon will display when motion has been detected. This setting must be activated in the application section

When no motion is detected the motion detection icons will look like the following.



But, in the case that motion is detected and recording has started, the icon will look will light up blue.



Active Record

Active Record: Active record will show up when the device is actively recording. Active recording functions like motion detection, scheduler, or an alarm will set off this automatic recording.

When active recording is not activated it will look like the picture below



When the active recording function is activated it will light up in red.



Record

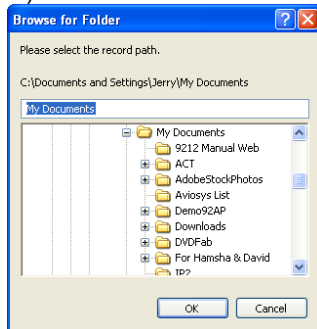
Record: The record button on the9070-CS PoE when pressed will record the live video feed and save the video into the computer viewing.

To record follow the following steps:

- 1.) Click on the record button



- 2.) Then select the folder that you would like to store the file. Then hit okay.



3.) Once the folder has been selected the device will start to record.



To stop recording click on the red icon and it will return to the original state.

Note: Remember you need VLC codec to play the video files that are recorded

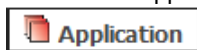
Snapshot

Snapshot: The snapshot function, creates a easy way take pictures of the current view in the IP Kamera9070-CS PoE.



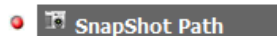
To setup the snapshot destination folder:

1.) Click on the Application link on the bottom menu



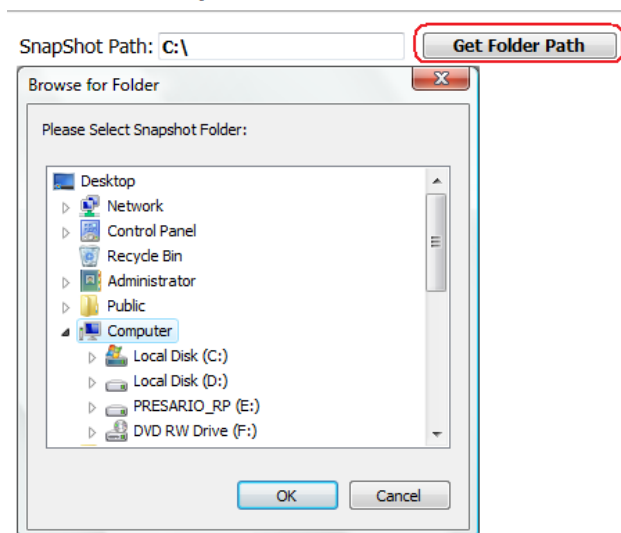
2.) Then select Snapshot path

Setting



3.) In here browse for the location where snapshot pictures will be stored. By default the snapshot path will be in C:/

Snapshot Path



To use the snapshot function:

1.) Click on the snapshot button



2.) In explorer go to the selected path and the files will be created there.

Image

The image section allows you to change the Image settings for the device and tune the image of the IP Kamera 9070

Audio

Audio: The audio function allows you to hear the sounds coming from the IP Kamera 9070's built in microphone.

To turn on the audio function:

- 1.) Click on the Audio button



- 2.) Then the audio button will start to move showing that sound is being transferred



- 3.) To turn off the audio click on the button again.

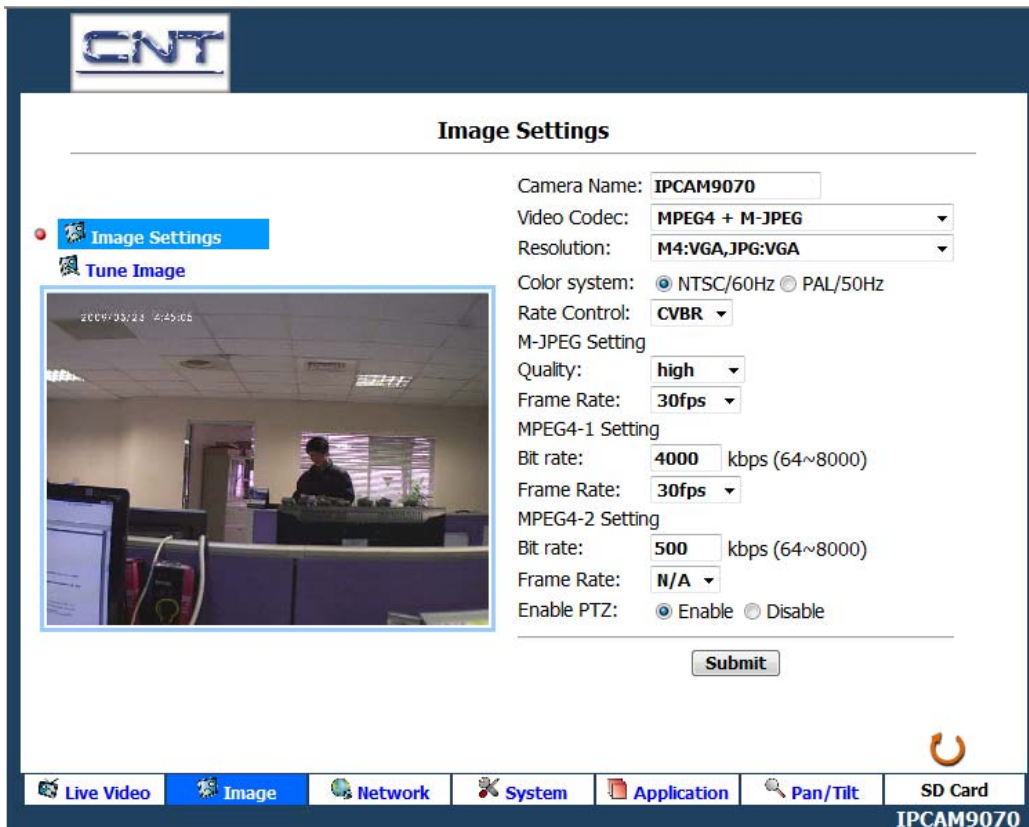
Note: Audio can only be enabled in Mpeg Mode.

Image

The image section allows you to change the Image settings for the device and tune the image of the IP Kamera9070-CS PoE

Image Settings

The Image settings section allows you to change the video settings and the Name of the Kamera.



Camera Name: Select a camera name for the device and then hit submit Camera Name:

Video Codec:

Video Codec: MPEG4+JPEG ▼

MPEG4+MPEG4+JPEG

MPEG4+JPEG

MPEG4+MPEG4

Single MPEG4

Resolution:

Resolution	
(MPEG4+MPEG4+JPEG):	M4:720P,M4:CIF,JPG:352
(MPEG4+JPEG):	M4:VGA,JPEG:VGA
(MPEG4+JPEG):	M4:720,JPEG:352
(MEG4+MPEG4):	M4:720,M4:CIF
(Single MPEG4):	M4:720

Color System: Select the broadcasting color system that pertains to your country.

NTSC/60Hz
PAL/50Hz

Rate Control: Select the Bit Rate Control that fits your needs.

CVBR: Constrained Variable Bit Rate
CBR: Constant Bit Rate

M-JPEG Settings: The available Quality settings and FPS for the M-JPEG settings are shown below

M-JPEG Quality Settings
High
Medium
Low

M-JPEG Frame Rate Settings
30 FPS
15 FPS
7.5 FPS
3 FPS
1 FPS

MPEG4-1

Bit Rate: Select a value from 64–8000.

FPS: Select a FPS from 30fps, 15fps, or 7.5fps

MPEG4-2

Bit Rate: Select a value from 64–8000.

FPS: Select a FPS from 15fps or 7.5fps

Enable EPTZ: The EPTZ on the IP Kamera 9070 a virtual EPTZ function. This function allows the user to control the video on the Live Video mode by moving left or right, zooming in and zooming out.

To use the EPTZ mode:

1.) Enable the EPTZ function and then hit the submit button.

Enable PTZ: Enable Disable

2.) Click on Live Video Mode [Live Video](#)

3.) Click on EPTZ-Set and a new control window will pop out.



From here you can control the live videos Zoom Function and direction.

Also once EPTZ is enabled, in the Live View Screen buttons will appear on the bottom for you to pan, tilt, and zoom.

Note: PTZ is only available in the mode below. When you enable PTZ it will automatically jump into that mode.

Video Codec:
 Resolution:


Tune Image

The tune image settings section allows you to control and tune the picture quality of the image. Keep in mind, the quality of the picture will also be affected by the quality of the lens that is being used.

Image Fine Tune

Image Settings

Tune Image



White Balance:

Day and Night:

TV Output: Enable Disable

Binning / Skipping mode:

BLC: ON OFF

Backlight

Brightness

Contrast

Saturation

Sharpness

White Balance: Select from the following options **auto**, **indoor**, or **outdoor**

Day and Night: Select the mode Day or Night

TV Output: Select the mode **enable** or **disable** to output to a T.V

Binning / Skipping mode: Binning enables low light-light performance. Select Binning, Skipping, 4x Binning mode (default is Binning)

BLC (Backlight control): Select from one of the options on or off to control the

Backlight: Select a value between (0~255)

Brightness: Select a value between (0~255)

Contrast: Select a value between (0~255)

Saturation: Select a value between (0~255)

Sharpness: Select a value between (0~255)

(Default Values)

Default: To Return all values to normal default click on this button.

Note: Make sure you click on the Apply button to save any changes made

Network

Network

Network

When the network settings have been changed, please restart the web browser and reconnect to the newly configured network information.
Network settings can be modified below. Static IP addressing is enabled

IP Address:

Local IP Address:

Subnet Mask:

Default Gateway:

DNS Server:

HTTP Port: (80 or 1025~65535)

MAC:

Live Video Image Network System Application PTZ-Set SD Card
IPCAM9070

The network section allows you to setup the network information for the IP Kamera 9070.

IP Address: Actual IP Address of the device can be found here

LAN IP Address: Local Area Network Address.

Subnet Mask: Subnet Mask information

Default Gateway: Default Gateway Address

DNS Server: Domain Name System Address

Http Port: Enter the port that you would like

MAC: The Mac Address information can be found here

Note: Make sure you click on the Apply button to save any changes made

FTP

FTP Server Setting

FTP is a network protocol used to transfer data please setup the correct server setting.

Network

- FTP**
- SMTP
- SNTP
- IP Service

FTP Server: Port:

User Name:

Password:

File Upload Path:

The FTP section of the IP Kamera 9070 allows you to save video clips

FTP Server: Enter the FTP server address here

User Name: Enter the FTP Username

Password: Enter the FTP Password

File Upload Path: Enter the upload path of the FTP Server

SMTP (Outgoing E-mail Server)

SMTP Server Setting

To use to E-mail function please enter Outgoing Mail Server (SMTP) of your E-mail Address.

Network

- FTP
- E-mail SMTP**
- SNTP
- IP Service

My Server Requires Authentication

Account Name:

Password:

use SSL connect: ON OFF

SMTP Server:

port:


Email Address:

Sender:

Subject:

Content:

Content words should less then 255



Live Video | **Image** | **Network** | **System** | **Application** | **PTZ-Set** | **Media Player**

Enter the SMTP E-mail server information here.

My Server Requires Authentication: Check this section if your email requires Server Authentication.

Account Name: Enter then login of the mail account

Password: Enter the password of the E-mail account

Use SSL Connect: If the email server requires SSL (Secure Sockets Layer) this option need

Sender Email: Enter the Sender Email Address

SMTP Server: Enter the SMTP Outgoing mail address

Email Address: Enter the Receiving Email address

SNTP

The SNTP is a protocol for synchronizing the clocks of computer systems.

SNTP Server Setting

- Network
- FTP
- E-mail SMTP
- SNTP**
- IP Service

SNTP is a protocol for synchronizing the clocks of computer systems over packet-switched, variable-latency data networks please setup the correct SNTP server information.

SNTP Server:

SNTP Server List:

Time Zone:

Automatically Adjust for Daylight Saving Time Changes.

SNTP Server: Enter the SNTP server address. Below are a list of free public NTP servers.

Europe — europe.pool.ntp.org

Asia — asia.pool.ntp.org

Oceania — oceania.pool.ntp.org

North America — north-america.pool.ntp.org

South America — south-america.pool.ntp.org

Africa — africa.pool.ntp.org

Time Zone: Enter the corresponding time zone

Automatically adjust for daylight saving time: Check this section if you want daylight saving time to be implemented automatically.

IP Service

IP Service

- Network
- FTP
- SMTP
- SNTP
- IP Service**

IP Service Server settings can be modified below.

Enable IP Service

IP Service TCP Server:

IP Service UDP Server:

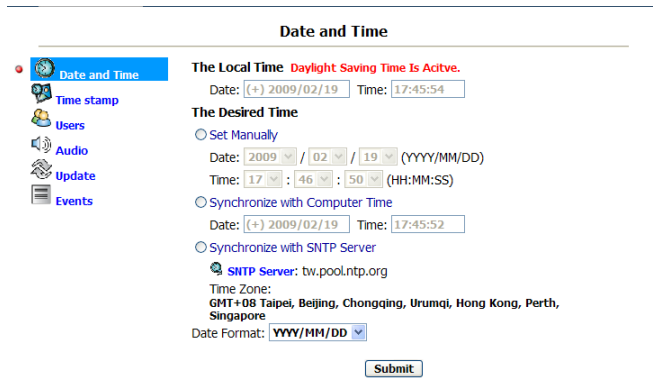
MAC:

IP service allows you to connect to the device directly without having to remember a long IP Address. Just enter the name of your device into IP Service and you can find your device as long as the port forwarding has been setup.

This section allows you to turn of this service.

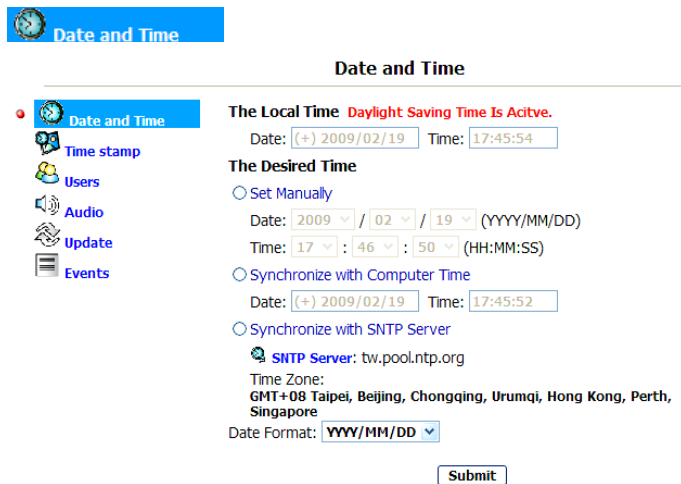
By default IP service is On. Click disable to close this feature.

System



The system section allows you to setup the IP 9070's system configurations. This includes the following

Date and Time



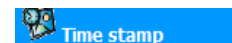
Set the date and Time of the device here.

The Local Time: The local time corresponds to the current time of the IP Kamera 9070.

Time Setup: Setup the current time of the device here

- 1.) **Set Manually:** Set the time manually
- 2.) **Synchronize with Computer Time:** Synchronize the time with the current computers time
- 3.) **Synchronize with SNTP:** Synchronize with SNTP

Time Stamp



The time stamp adds a time to the live video. When a recording is made this time stamp will show up with in the video file as well.

To enable the Time Stamp check the enable box.

Date and Time stamp

- Date and Time
- Time stamp
- Users
- Audio
- Update
- Events

Enable Date and Time stamp

Date Format:

User

Users

Users

User List:

admin:Admin

Add/Modify User

User Name:

Password:

Confirm:

Authority: Admin Operator Viewer

Users

The user setting allows you to create and remove users for access to the IP Kamera 9070.

Authority: Select one of the following options:

Admin: You can operate all functions in Web interface. Also, you can add or delete any user's account.

Operator: You can operate all functions in Web interface except user Add/Delete.

Viewer: You can only monitor the Web interface, but cannot operate all function and set parameters.

Audio

Audio

To enable audio recording, please select the enable button.

Audio Setting

Audio Recording: ON OFF

Language

Language Setting

Language Setting

Language:

The language setting section is where you can select the language that you would like to use to use the 9070. Currently there are 3 languages available: English, Chinese (Traditional), Chinese (Simplified).

The 9070 will automatically detect the favored language of choice depending the settings used in Windows.

Update



Update Firmware

Current Version Description

Kernel Version:Linux version 2.6.10_mv401_IPNC-1.1.0

UBoot Version:U-Boot 1.2.0 (Apr 21 2008 - 18:41:45) IPNC-U-1.0.2

Firmware Version:IPNC_APP v1.2.1.1

HTML Version:1.2.23

ActiveX Version:1,0,2,15

Device Version:9070

Update the device with the latest firmware.
Specify the firmware to update :

and click

Note: Do not disconnect the power of the device, during the update.
The device needs to be restarted after the update has completed.

Warning:IPCAM will restart immediately!!



The Update Firmware section is where information on the 9070 is displayed.

The **Kernel Version**, **Uboot Version**, **Firmware Version**, and other technical information on the device is displayed here.

Updating the Device

To update the device go to the update section. Here you will find the Current Version description.
To update the device:

- 1.) Browse for the correct update file.
- 2.) Hit the update button.
- 3.) A message will appear, reminding you not to disconnect when updating.

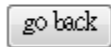


- 4.) Please view the bar on the bottom of internet explorer to make sure that the device is updated.



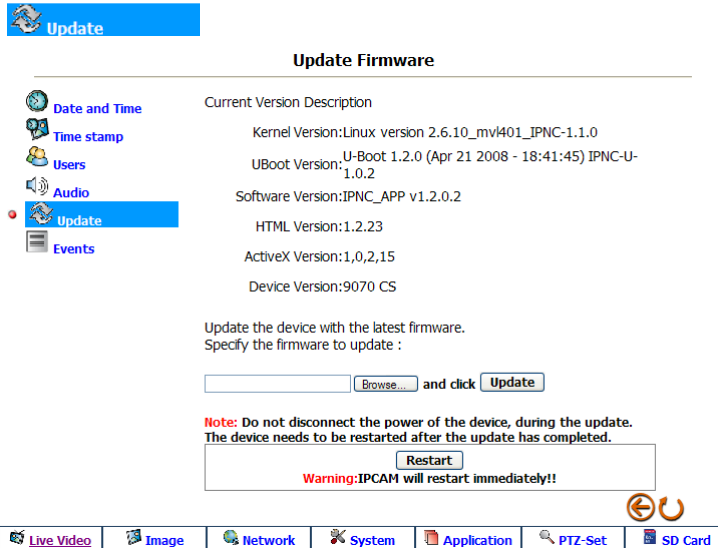
- 5.) When update is complete a new screen will appear then connect back to your device.

File create success. File system update success. Firm ware update success



Warning: Before you go to the next step make sure you have all your setting information written down. The device will reset back to manufacturers default values after you restart the device. You will need reconfigure the IP Kamera 9070, including Email, FTP, IP Address, Gateway, and etc.

- 6.) Enter update page, then hit the restart button.
- 7.) Then make sure you re-setup the device.



To update the device go to the update section. Here you will find the Current Version description.
To update the device:

- 8.) Browse for the correct update file.
- 9.) Hit the update button.
- 10.) A message will appear, reminding you not to disconnect when updating.



- 11.) Please view the bar on the bottom of internet explorer to make sure that the device is updated.

正在等候 http://58.114.176.99:8085/update.cgi...

- 12.) When update is complete a new screen will appear then connect back to your device.



- 13.) Log back into the device go to the update page, then hit the restart button.

Warning: Before you go to the next step make sure you have all your setting information written down. The device will reset back to manufacturer default values after you restart the device. You will need reconfigure the IP Kamera9070-CS PoE, including Email, FTP, IP Address, Gateway, and etc.

Event Log

Item	Date and Time	Events
1.	2009-02-23 13:24:59	admin login on 192.168.1.27
2.	2009-02-23 11:50:01	admin login on 192.168.1.27
3.	2009-02-23 10:35:00	Schedule
4.	2009-02-23 10:30:00	Schedule
5.	2009-02-23 10:05:41	admin login on 192.168.1.24
6.	2009-02-23 09:34:23	admin login on 192.168.1.88
7.	2009-02-23 09:13:20	Ethernet alarm
8.	2009-02-23 09:13:20	Ethernet alarm
9.	2009-02-23 09:13:18	Ethernet alarm
10.	2009-02-23 09:12:40	Ethernet alarm
11.	2009-02-23 09:12:39	Ethernet alarm
12.	2009-02-23 09:11:34	Ethernet alarm
13.	2009-02-23 09:11:34	Ethernet alarm
14.	2009-02-23 09:04:04	admin login on 192.168.1.88
15.	2009-02-23 08:33:52	admin login on 192.168.1.88
16.	2009-02-20 17:39:51	admin login on 192.168.1.24
17.	2009-02-20 17:09:50	admin login on 192.168.1.24
18.	2009-02-20 16:39:48	admin login on 192.168.1.24
19.	2009-02-20 16:09:47	admin login on 192.168.1.24
20.	2009-02-20 15:39:47	admin login on 192.168.1.24

Application

Setting

AVI Duration: -- Second(s)

AVI Format: MPEG4(720)

If AVI duration is '-', that means you insert the SD card .
Because at the same time, MPEG recorder only can work in the SD card.
If you want to save MPEG on the FTP or SMTP, pls remove SD card.

Submit

Record

Enable Record

Schedule

Auto Record

Alarm

Enable Alarm

Motion Detection

The Application Section allows you to setup the Video File information, FTP, SD Card, SMTP

Setting

Snapshot Path

Snapshot Path

SnapShot Path: C:\

The Snapshot path is the location where the snapshot pictures will be saved onto your computer. The default snapshot path will be set to C:\. To select the snapshot path click on the

button and select the folder where the snapshots will be saved.

Video File Video File

Video File

AVI Duration: Second(s)

AVI Format:

If AVI duration is '--', that means you insert the SD card .
Beacuse at the same time ,MPEG recorder only can work in the SD card.
If you want to save MPEG on the FTP or SMTP,please remove SD card.

Select the Video File format that the device will record in.

1.) **Avi Duration:**

From the drop-down list, select the length of an AVI file.

2.) **Avi Format:**

MPEG4(720)

MPEG4(CIF)

3.) Hit the submit button to confirm new settings.

FTP FTP

FTP Application Setting

FTP Networking

FTP Server: 192.168.1.1 Port:21

User Name:

File Upload Path: default_folder

Storage Setting

File Format:

Lefted the SD Card or Select other image Setting than you can select
more option. [Image Settings](#)
Beacuse at the same time ,MPEG recorder only can work in the SD card.
If you want to save MPEG on the FTP or SMTP,please remove SD card.

In the FTP section, you can set the file format that you would like to use for FTP transfer.

Note:

1.) Before you use the FTP function, you will need to set the FTP server information. You can click on the [FTP Networking](#) link to take you to the FTP setup section.

2.) If the SD Card is inserted into the device, the 9070 will only be able to record in M-Jpeg mode to the FTP.

SD Card SD Card

SD Card Application Setting

Split Filename Type: ▾
Split File Size (MB) : ▾
File Format: ▾

Enable Auto Overwrite
(When SD card is full, Auto Overwrite will replace oldest file.)

SD Card Capacity: 477.88 MB
SD Card Usage: 0 %

(Storage Disk Format) (Storage Disk Unmount) (Save Changes)

File Format: Select the video format that you would like to save into the SD card

Split Filename Type: Select the format that you would like to save the files in the SD card. You can pick from:

Name by Index: Creates file names according to index.

Name by Time: Creates file names according to time.

Split File Size: Select the size of each file that will be saved into the SD.
You can select from:

None, 10mb, 25mb, 50mb, & 100mb.

Enable Auto Overwrite: Auto Overwrite allows the device to automatically replace the oldest file on the SD card when it is full.

SD Format: SD format will format the entire SD card

SD Unmount: Click the SD unmount button when the SD card is being removed this will safely remove the card without any damages.

E-mail SMTP SMTP

SMTP Application Setting

SMTP Networking

SMTP Server: 192.168.1.1
Email Address: a@aa.bb

Storage Setting

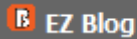
Attached File Numbers: (1 ~ 20)
Attached File Format : ▾

In the settings section, you can find the SMTP information by clicking on the SMTP tab. Here you can see the current SMTP Server information and email address.

Storage Settings

You can also select the file format in which you would like the IP Kamera9070-CS PoE to send. Select from **MPEG4** or **MJPEG**.

EZ-Blog



EZ Blog allows you to easily integrate code into your blog which will let you directly stream into your blog, website, and any compatible site. This way you can IP Kamera as more than a regular security camera but also a promotional tool.

EZ Blog

User List: Users	User Name:	<input type="text" value="guest"/>
admin:Admin	Password:	<input type="password"/>
quest:Viewer	Height:	<input type="text" value="192"/>
	Weight:	<input type="text" value="352"/>
	Embed Code (Highlight Entire Code):	<input type="text"/>
		<input type="button" value="Create Code"/>



User List: This shows the Users Available to create an Ez Blog link with. Use a guest user account to create the EZ-Blog. You can easily create on by clicking on the User link



Setup the Embed Code

Next step is to setup the Embed Code that will be implemented into your blog, website, etc.

- 1.) type in the correct password for your login account.

User Name:

Password:

- 2.) Then select the size that you would like the embedded video to be.

Height:

Weight:

- 3.) Click on the create code button.

Embed Code (Highlight Entire Code):

```
<script language="javascript" src="http://
```

Create Code

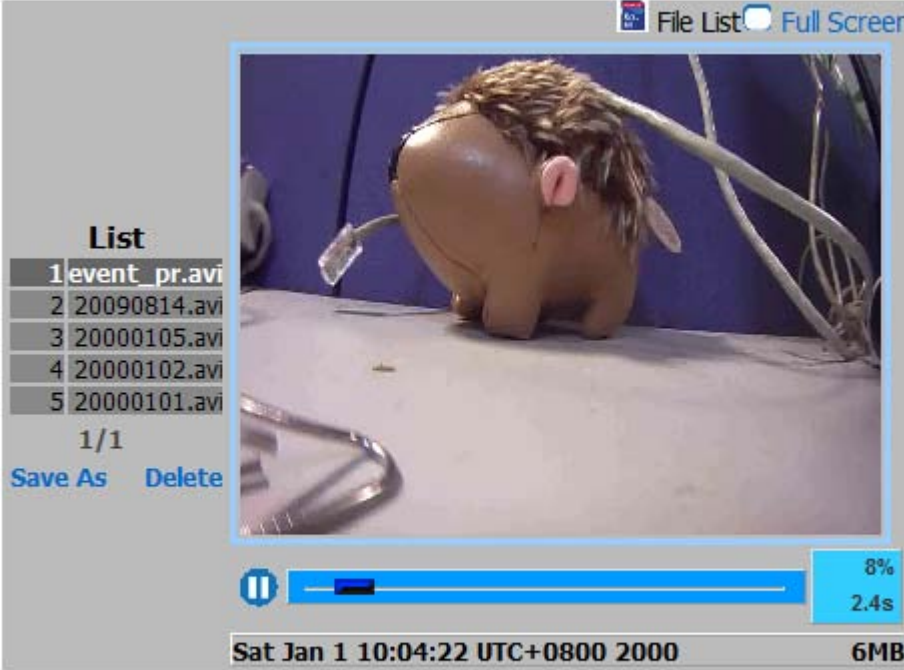
copy

- 4.) You can highlight the embed code from inside the box and then copying (ctrl + C) or you can just hit the copy button to copy the code.
- 5.) Once the code has been copied, place that code somewhere in the body of your blog or website and a video will be displayed on the screen.

Media Player

▶ Media Player

Media Player



File List Full Screen

List

1	event_pr.avi
2	20090814.avi
3	20000105.avi
4	20000102.avi
5	20000101.avi

1/1

Save As Delete

8% 2.4s

Sat Jan 1 10:04:22 UTC+0800 2000 6MB

If you can not see anything , pls download klite code.

The media player allows you to view your recordings on the SD card directly through the internet without requiring downloading the file first. This feature makes it very convenient for live streaming.

View in Full Screen

To view the IP Kamera in full screen model you will need to press the Full Screen mode.

Full Screen

My Web

My Web

Enable My Web: ON OFF

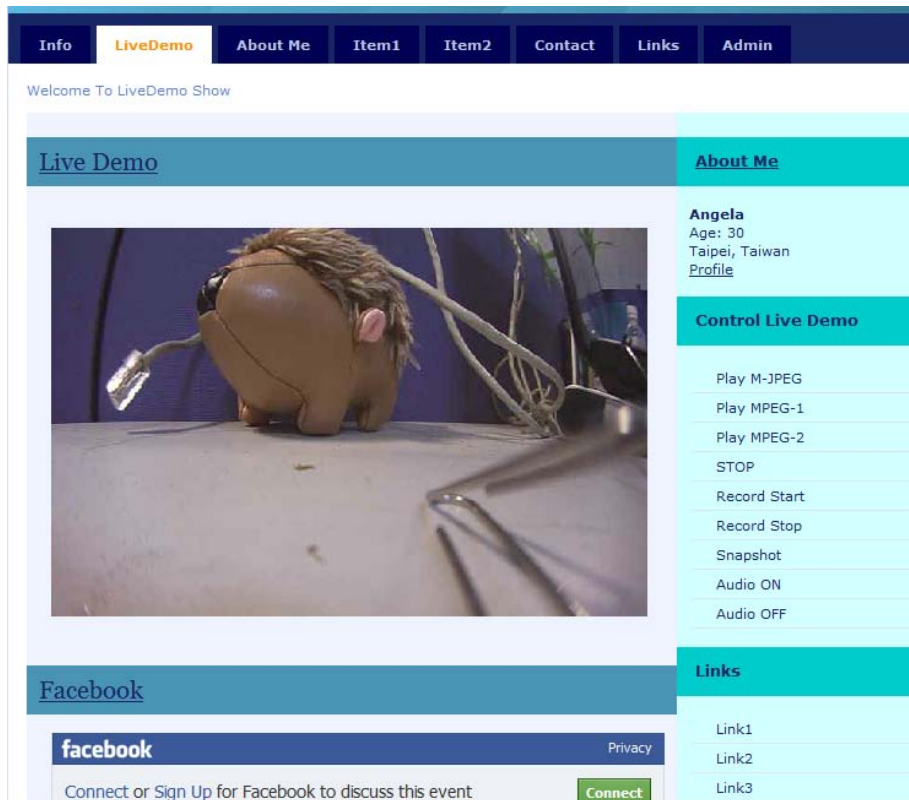
Login Required: ON OFF

Upload My Web Zip File

Download and use the sample MY Web as reference or revert the current My Web back to the manufacturer default.

My Web Sample Zip File

Revert to Default My Web



The My-Web functionality will make your IP Kamera more than just a surveillance tool. Now you can use it to promote your company, restaurant, business, school, and etc. With some basic website skills or tools any can make a My Web site.

Turning On My Web

Enable My Web: ON OFF

Login Required: ON OFF

Enable my web button:

The enable My Web button will activate the My Web functionality. Once enabled every time the device is accessed it will be set to the My Web Page.

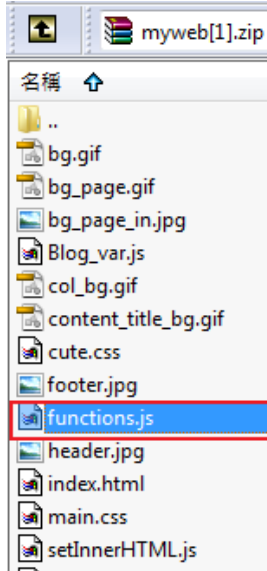
Login Required:

The login required will require your My Web users to login to the device before being able to use it. This is a way to keep unwanted viewers from entering the My Web

Setting up My Web

To setup My Web you can download the MyWeb file from the 9070.

- 1.) Click on the Download Default Page.
- 2.) Save the Zip file to a location where you can edit it
- 3.) Extract the file functions.js



- 4.) Start creating a My Web and be sure to include the functions.js into your code.
(Note: Do not include folders within the webpage.)
- 5.) After you have created the webpage, make sure to create a Zip file. Zip up the file and

Returning to default My Web page

If you would like to return your 9070 to the default My Web page click the default My Web Page button. This will reset the current My Web to the original manufacturer default.

Using My Web

To use the My Web feature:

- 1.) Use IPedit and directly log into the IP camera.
- 2.) The device will open the root page of the 9070 to the My Web page.

- If you would like to return to the normal administrator page for the 9070 you can login to the admin site.


For Example:

9070 IP Address: 192.168.12.111 **Port:**8080

Then on the web browser type in the following

<http://192.168.12.111:8080/index.htm>

Schedule Record

Schedule  Schedule

Schedule

<input checked="" type="checkbox"/>	Monday	From	10	:	30	To	22	:	35
<input checked="" type="checkbox"/>	Tuesday	From	03	:	39	To	11	:	51
<input checked="" type="checkbox"/>	Wednesday	From	03	:	23	To	19	:	23
<input checked="" type="checkbox"/>	Thursday	From	00	:	00	To	00	:	00
<input checked="" type="checkbox"/>	Friday	From	00	:	00	To	00	:	00
<input checked="" type="checkbox"/>	Saturday	From	00	:	00	To	00	:	00
<input checked="" type="checkbox"/>	Sunday	From	00	:	00	To	00	:	00

	0	1	2	3	4	5	6	7	8	9	10	11	12	13	14	15	16	17	18	19	20	21	22	23	
SUN											00:00	00:00													
MON																									
TUE																									
WED																									
THU																									
FRI																									
SAT																									

The schedule allows you to select days and times that you would like to schedule automatic recording. You can pick a day from (Sunday – Saturday) and also a option for Everyday.

To schedule automatic recording:

- Select the day that you would want to start recording.
- Select the **From time** and the **To time**.
- Once the schedule has been created hit the submit button to apply the new settings.

Schedule Record  Schedule Record

Schedule Record Application Enable Setting

Schedule Record - Upload Via  FTP

Schedule Record - Save Into  SD Card

Schedule Record allows you to select where the schedule will record the video files to.

Schedule Record – Upload Via FTP: Saves schedule recordings into FTP


Schedule Record – Save into SD Card: Saves schedule recordings into SD Card

Alarm


Enable Alarm Enable Alarm


Alarm Application Enable Setting

Connection Lost

Enable Alarm - Save Into  SD Card

Motion Detection

Enable Alarm - Upload Via  FTP

Enable Alarm - Save Into  SD Card

Enable Alarm - Upload Via  SMTP

Recording Time:

Enable Alarm Recording Buffer

Buffer Time :

(Note: For Alarm Recording Buffer to work correctly an alarm above must be activated.)

Enable Alarm – Lost Ethernet Connection: Save into SD Card:

When Ethernet connection is lost the device will automatically save into the SD card. Saving a backup.

Enable Alarm - Upload FTP

When motion is detected, the IP Kamera 9070 will upload the video file to the selected FTP server.

Enable Alarm - Save Into SD Card

When motion is detected, the IP Kamera 9070 will upload the video file to the SD card.

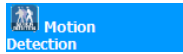
Enable Alarm – Save SMTP

When motion is detected, the IP Kamera 9070 will send the video file to in a E-mail format.

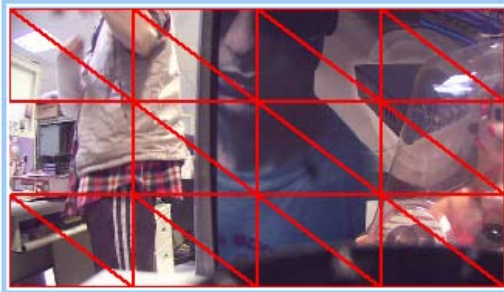
Recording Time: Set the duration of time you would like the IP Kamera9070-CS PoE to record when alarm is set off.

Enable Alarm Recording Buffer: The alarm recording buffer allows the camera to the selected amount of buffer time before an alarm has been detected. This allows the IP Kamera9070-CS PoE to start recording before any incident has occurred..

Motion Detection



Motion Detection



Click the right mouse button to show the popmenu.
Save the setting after you finish editing.

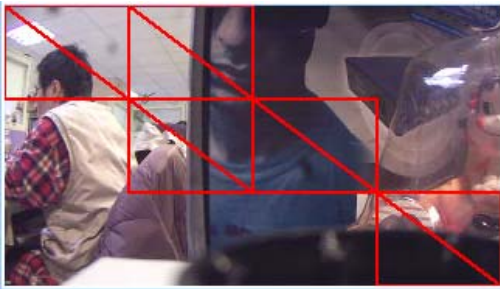
Motion Detection: Enable Disable

Sensitivity : (Customized Threshold)

Submit

To enable motion detection:

- 1.) Select Enable in the motion detection option.
- 2.) Select the sensitivity of your choice
 - a. You can pick from Lowest, Low, Medium, High, Highest
 - b. You can also customize your own threshold from (1-99)
- 3.) Once you have set your settings on the window screen click on the picture where you want the motion to be detected. Double click on the selected areas to remove the choice.



You can right click on the window screen for more options



- 4.) Once your settings have been set hit the submit button to save all changes.

EPTZ-Set

The EPTZ allows you to Pan, Tilt, & Zoom the image that you are viewing.
To activate this feature EPTZ must be enabled in the Image section of the 9070-CS PoE.

Enable PTZ: Enable Disable



Submit

Note: When EPTZ Controller is activated Video Codec mode will be switched to MPEG4 & M-Jpeg when disabled the codec will be set on Mpeg1, Mpeg2, & M-Jpeg.

How to use EPTZ with the mouse

On the Live view Video screen the EPTZ controls are:

Zoom In: Click and Hold the left mouse in the live view then release when zoomed to preferred point

Zoom into highest: Double click left mouse

Zoom out: Click and Hold the right mouse in the live view then release when zoomed to preferred point

Zoom out to screen fit: Double click right mouse

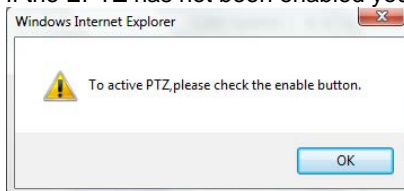
Note: When using the mouse to zoom in the snapshot function will not take a picture of the zoomed picture but the resolution size.

How to Enable and Use EPTZ Controller

Note: When EPTZ is activated Video Codec mode will be switched to MPEG4 & M-Jpeg when disabled the codec will be set on Mpeg1, Mpeg2, & M-Jpeg.

Also snapshot function works only with the EPTZ controller and not when using the mouse to EPTZ.

- 1.) Click on the EPTZ button located on the bottom of the screen of the 9070.
- 2.) If the EPTZ has not been enabled you will be notified that it must be enabled.

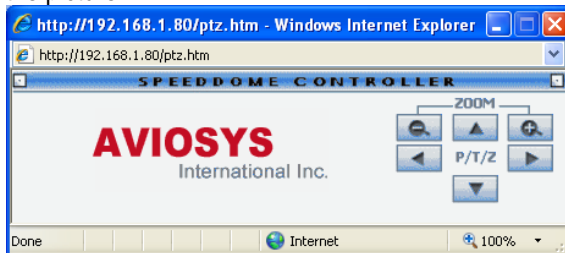


- 3.) Select Enable on the EPTZ function then hit the submit button

Enable PTZ: Enable Disable

Submit

Once the Speed dome controller is activated you can click on left, right, up, down, and zoom buttons to view the picture.



Note: To use EPTZ without activating

7.) Controlling the Device

CGI HTTP Commands

Http commands allow you to control the device with commands. The basic commands are provided below.

There are two ways to input http commands with authorization required

Password in http:

`http://login:password@ipaddress:port/command`

Password not in http:

`http://ipaddress:port/command`

Note: If you use the password not in http: command you will need to enter it when the browser asks for the password.

Snapshot Command:

The snapshot command takes a snapshot of the camera in the current view.

`http://ipaddress:port/snapshot.cgi`

Ex. http command:

<http://192.168.100.50:85/snapshot.cgi>

Change Name:

This command allows you to change the name of the IP Kamera9070-CS PoE

`http://ipaddress:port/vb.htm?cameratitle=name`

Ex. http command:

http://192.168.1.192/vb.htm?cameratitle=test_907011

Change IP Address:

This command allows you to change the IP Address of the IP Kamera9070-CS PoE

`http://ipaddress:port/vb.htm?internetip=ipaddress`

Ex. http command:

<http://192.168.1.192/vb.htm?internetip=192.168.1.191>

Change Port:

This command allows you to change the Port of the IP Kamera9070-CS PoE

`http://ipaddress:port/vb.htm?httpport=portnumber`

Ex. http command:

<http://192.168.1.192/vb.htm?httpport=1025>

Change Subnet Mask:

This command allows you to change the Subnet Mask of the IP Kamera9070-CS PoE

`http://ipaddress:port/vb.htm?subnetmask=subnetmask`

Ex. http command
<http://192.168.1.192/vb.htm?subnetmask=255.255.0.0>

Note: Default subnet mask is 255.255.0.0

Change Gateway:

This command allows you to change the gateway the IP Kamera9070-CS PoE.

<http://ipaddress:port/vb.htm?gateway=gatewayaddress>

Ex. http command
<http://192.168.1.192/vb.htm?gateway=192.168.1.1>

Change DNS:

This command allows you to change the gateway the IP Kamera9070-CS PoE.

<http://ipaddress:port/vb.htm?dnsip=dnsipaddress>

Ex. http command
<http://192.168.1.192/vb.htm?dnsip=168.95.1.1>

MJPEG Streaming

This command allows you to integrate streaming data into a software, website, or any other application.

<http://ipaddress:port/ipcam/mjpeg.cgi>

Ex. http command
<http://192.168.1.192/ipcam/mjpeg.cgi>

8.) Using RTSP with VLC

Before Setting up VLC: Make sure that the 9070-Lite is set to be the DMZ host on the router that you are using, please refer to the routers manual on how to accomplish this.

How to setup VLC media player & Open a network stream

Note: Before using RSTP you must port forward your router to the following port numbers.

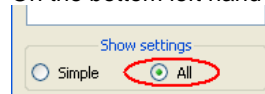
For 1280 x 720P (Mpeg4-1): **Port forward to 554**

If Port forwarding (Mpeg4-2): **Port forward to 8554**

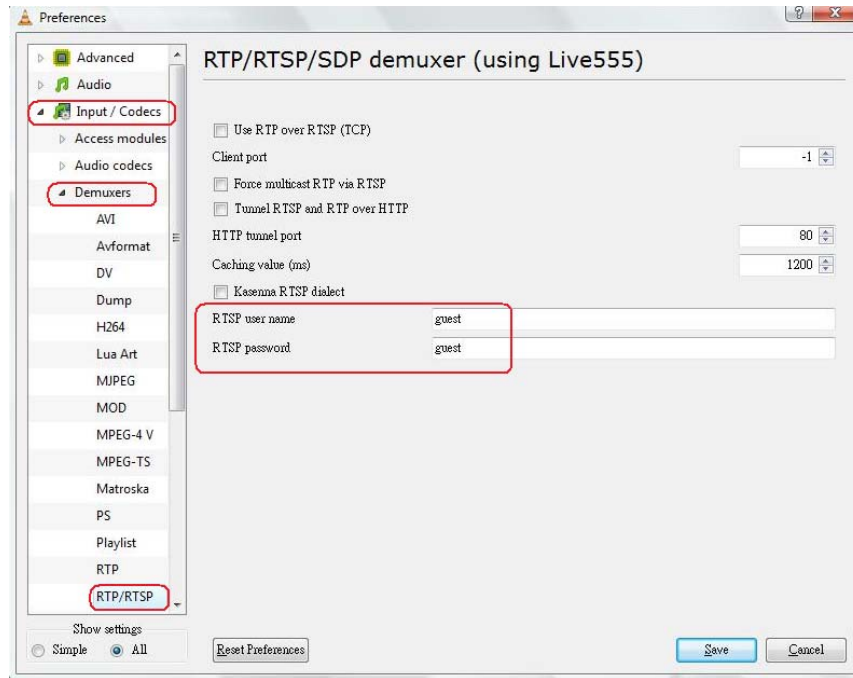
- 1.) Open VLC media Player
- 2.) Click on Tools > Preference
- 3.) On the bottom of the screen click the Reset preference button.



- 4.) On the bottom left hand side of VLC select the all under the show settings area.

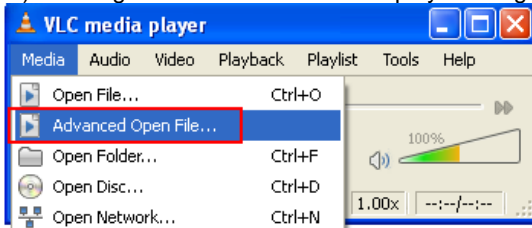


- 5.) Then in the left panel select Input / Codecs > Demuxers > RTP/RTSP and type in the **RTSP user name** and **RTSP password**.

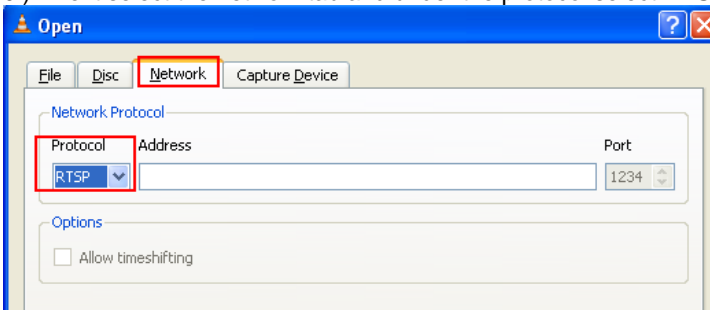


- 6.) Check the Cache value. *For low latency, it should be 70~80 based on PC's performance.*
 Note: If the video is not smooth, set the caching value from 150~1200. This problem could be due to too much congestion, busy pc, and etc.
- 7.) Save the new settings

8.) Then go back to the VLC media player and go to Media > Advance Open File

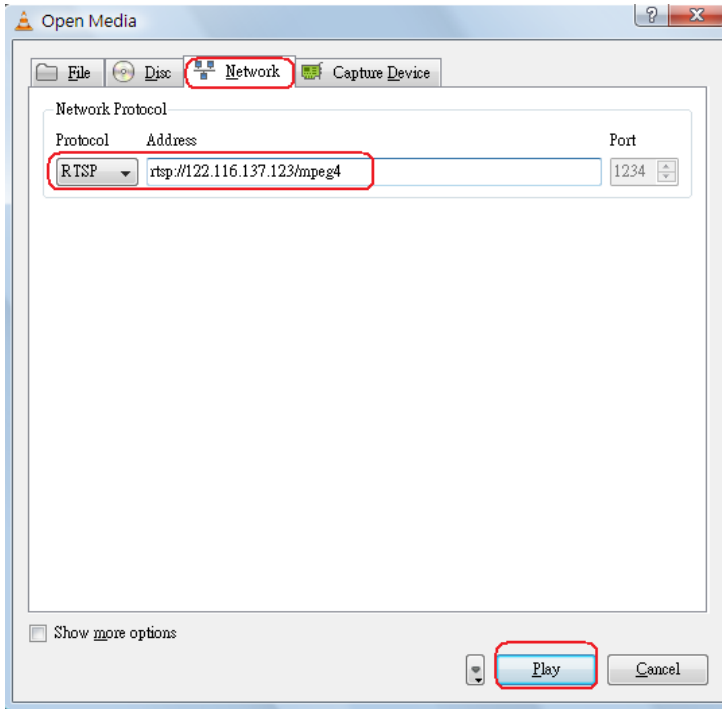


9.) Next select the network tab and under the protocol select RTSP.

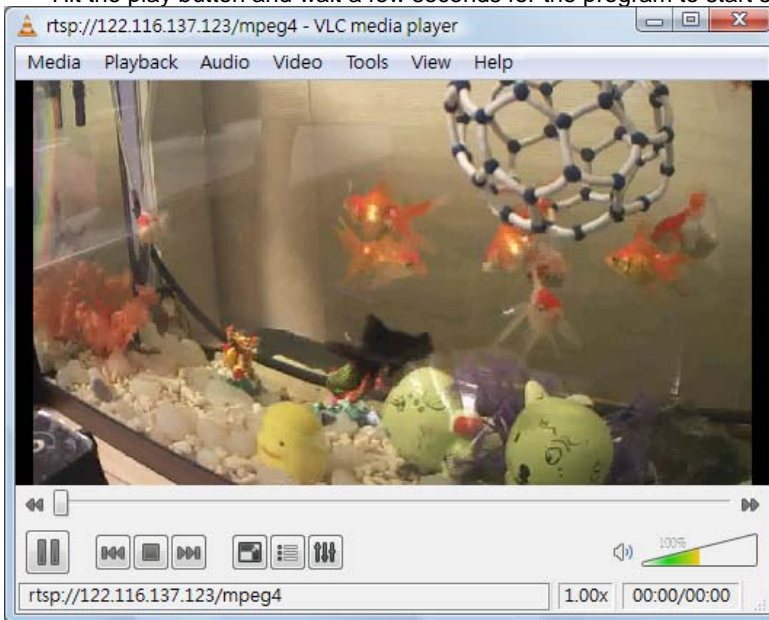


- 10.) Type in the RTSP address of your device
For Mpeg4 Stream1 : rtsp://<IP Address>/mpeg4
For Mpeg4 Stream2 : rtsp://<IP Address>:8554/mpeg4

Example: rtsp://122.116.137.123/mpeg4



Hit the play button and wait a few seconds for the program to start streaming.



9.) Using CNT with Surf16 CH

CNT makes connecting to the IP Kamera 9070 a very simple task. Using Surf 16 CH and multi device DVR monitoring software, you can easily view your 9070CS. Follow these simple steps:

Finding the MAC Address

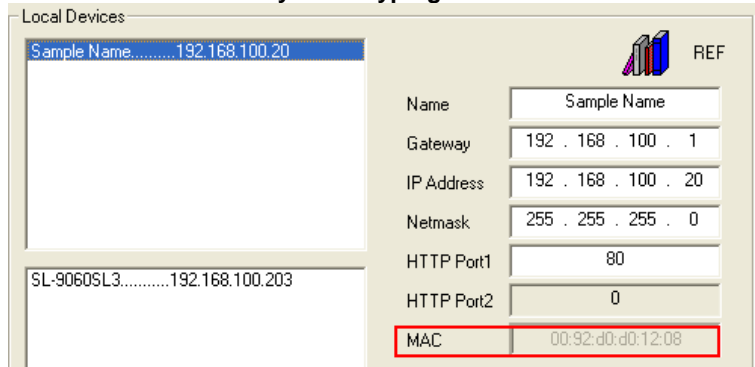
There are two ways to find the MAC address in IPEdit.

***Note: IP Server must be enabled on your device's webpage. By default IP Server is enabled.**

Find MAC Address in LAN Using IPEdit

- 1.) In IPEdit, highlight the device that you are using. On the right side of IPEdit you will find the MAC Address that you will need to use CNT.

***Note: Make sure when you are typing in the MAC address to leave out the “:”**

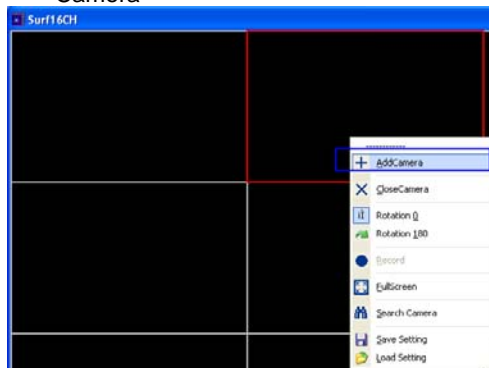


Find MAC Address in WAN Using IPService on IPEdit

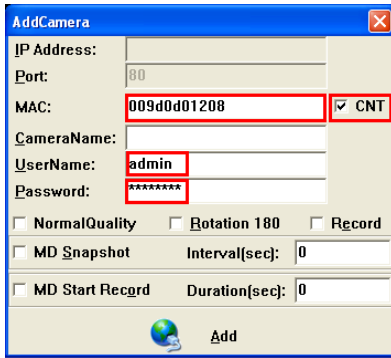
- 1.) To find your MAC Address through the internet, Open IPEdit and hit the connect button on IP Service.
- 2.) Then Type in the name of your device in this case it is "Sample Name", then hit the search button.
- 3.) Your device should be listed and the MAC address should be displayed on the screen. Copy down the MAC address and use it to connect via CNT.

Add device using CNT

- 1.) On Surf 16 Ch DVR software, right click on the screen on one of the windows and select Add Camera



- 2.) Then under the section labeled **MAC:** Type in the MAC address.



3.) Do not forget to enter the password and login.

10.) Frequently Asked Questions (F.A.Q)

Q1: Why can't I view the video files that I have recorded, nothing is playing?

Ans: VLC Codec, you can download VLC Codec from their website at:

Q2: How do I reset the device to manufacturers default values

Ans: On the back of the device there is a reset button, hold down the reset button for more than 7 seconds. Then give the 9070-CS PoE a 1 minute to restart. Once the device has restarted it will be set back to manufacturer default settings.

Default Values

Default IP: 192.168.1.168 (When 9070-CS PoE is connected to PC directly)

Default Login: Admin

Default Password: 12345678

Q3: Why does the device on EPTZ change my video mode?

Ans: When EPTZ is activated Video Codec mode will be switched to MPEG4 & M-Jpeg when disabled the codec will be set on Mpeg1, Mpeg2, & M-Jpeg.

Q4: How do I take snapshots using the EPTZ function?

Ans: When using EPTZ function remember that only the snapshot functions works with the EPTZ controller. If you are just using the mouse to Pan Tilt and Zoom into your picture you the snapshot button will not capture the screen correctly. A way you can take a picture of the screen using the EPTZ with the mouse is to click on the print screen button on your computer.

Q5: Why is the RTSP not connecting to my VLC player or Quick time Player?

Ans: To use the RTSP functionality it is necessary to first set your 9070-Lite to be the DMZ host in your network. Also be sure to port forward your device at the following ports.

Port 554 for 1280 x 720P

Port 8554 for CIF format

Please refer to the routers manual on how this is setup

Q6: How do I improve the image quality on this device?

Ans: The Image quality of the 9070 is dependent on the bit rate of the device. With a larger bit rate the device will naturally create higher quality image, but this will affect the smoothness of the streaming when accessed through the internet. To find the most optimal settings for image quality and streaming smoothness, try different bit rate settings to achieve the best fit settings. .