

# MP3 PLAYER HIDDEN CAMERA

**SKU: HCMP3**



**USER MANUAL  
FCC CE**

## THANK YOU FOR PURCHASING THE MP3 PLAYER HIDDEN CAMERA

---

Please read this manual before operating the MP3 player hidden camera and keep it handy.

The size of this gadget is mindboggling considering that it is not only a hidden camera, but also a fully functional Mp3 player— it is only slightly larger than a quarter. Keep yourself entertained while you capture your evidence. Great for personal investigators slightly bored on the job, but also prevents any suspicions about why you're wearing the device. Or, use as a sports cam and play music while biking, running, or walking.

This unit records 150 minutes of 640\*480 resolution video in full color. You also have the option of taking still photographs. All videos and photographs are stored on MicroSD cards ranging from 2GB–16GB. The rechargeable battery has a life up 2 hours.

Your purchase should include:

- 1 x MP3 Player Hidden Camera
- 1 x USB Cable
- 1 x Earphones
- 1 x Instruction Booklet

Contact **770-694-6921** if you are missing any of these components.

**GET FAMILIAR WITH YOUR MP3 PLAYER HIDDEN CAMERA**

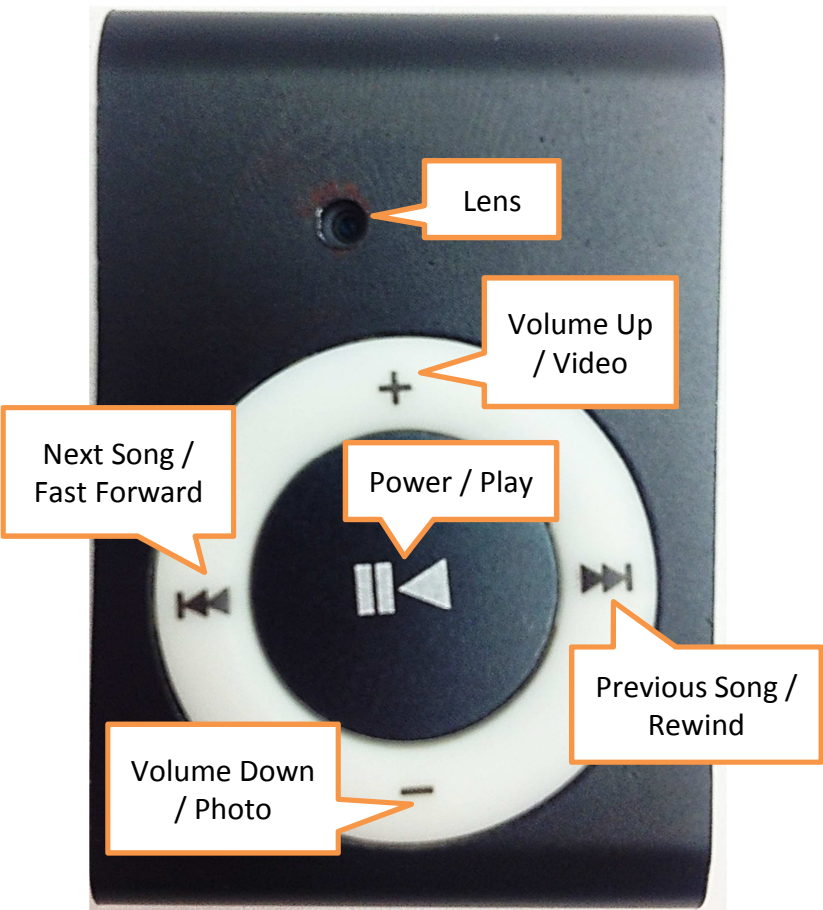


Figure 1: Front

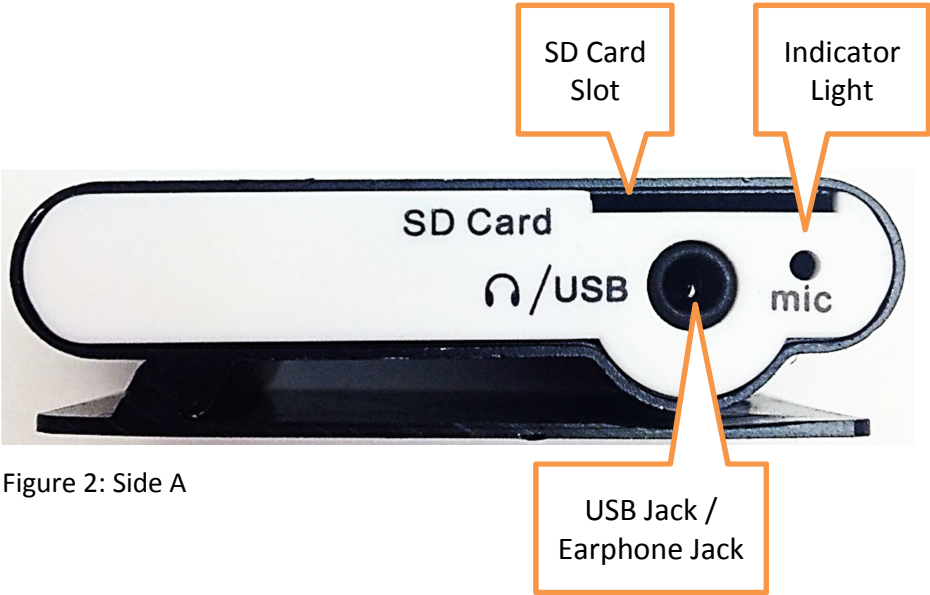


Figure 2: Side A



Figure 3: Side B

## OPERATING THE MP3 PLAYER HIDDEN CAMERA

*IMPORTANT NOTICE: Allow the device to charge 4 – 6 hours before using.*

### HOW TO CHARGE THE MP3 PLAYER

1. Plug the USB cable into the USB jack on the MP3 player
2. Plug the USB cable into your PC
  - The indicator light will blink yellow while charging
  - The indicator light will stay solid when fully charged

### HOW TO TURN ON / OFF THE MP3 PLAYER

1. Insert a MicroSD card into the slot
2. Push and hold the Power button
  - The yellow indicator light will turn on
  - The MP3 player is now in **standby mode**
3. Push and hold the Power button
  - The yellow indicator light will turn off

### HOW TO PLAY MUSIC

1. Push the Play button to play your personal music files
  - The blue indicator light will blink slowly
2. Push the Play button to pause the music
  - The blue indicator light will turn solid
3. Push the Play button to un-pause the music
  - The blue indicator light will blink slowly
4. Push and hold the Fast Forward button to fast forward through a song
5. Push the Next Song button to skip to the next song
6. Push and hold the Rewind button to rewind through a song
7. Push the Previous Song button to skip to the previous song
8. Push and hold the Play button to stop the music
  - The indicator light will turn yellow
  - The MP3 player is back in **standby mode**

## HOW TO RECORD VIDEO

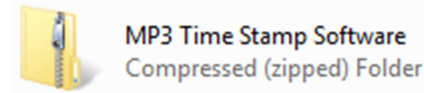
1. Put the MP3 player into **standby mode**
2. Push the Video button
  - The yellow indicator light will blink while recording
3. Push the Video button
  - The yellow indicator light will turn solid and stop recording

## HOW TO TAKE PHOTOGRAPHS

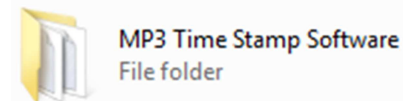
1. Put the MP3 player into **standby mode**
2. Push the Photo button
  - a. The yellow indicator light will blink once

## HOW TO RESET THE TIME AND DATE STAMP (Windows Only)

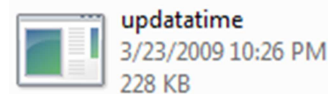
1. Connect the device to your PC using the USB Cable
2. Go to <http://mgidownloads.com/Software/>
3. Click on "MP3\_Time\_Stamp\_Software.zip"
4. Go to Start > Computer > Downloads
5. Right click MP3 Time Stamp Software zip file and select "Extract all"



6. Open the newly extracted folder
7. Open "MP3 Time Stamp Software"



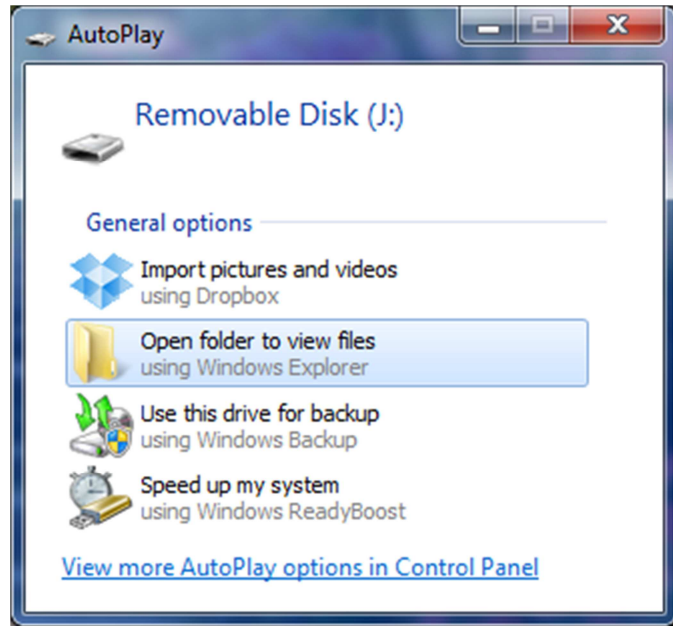
8. Click "updatetime"



9. Click "Run"

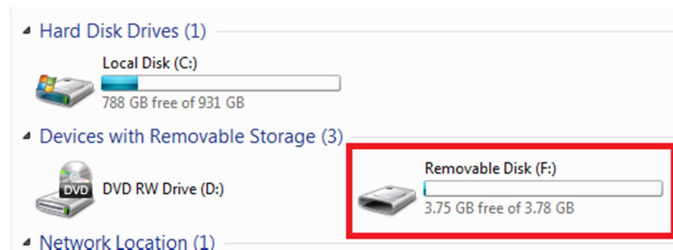
## RETRIEVE THE FILES TO YOUR PC

1. Plug the device into your PC using the USB cable
2. Locate "Removable Disk" inside the (My) Computer folder
  - AutoPlay Removable Disk > Open folder to view files



Or...

- Go to Start > Computer > Removable Disk



3. Open the Removable Disk drive

- Open the MUSIC folder to add or remove your personal music files from the MP3 player
  - Open the IMAGE folder to access the photos taken with the MP3 player
  - Open the VIDEO folder to access the videos taken with the MP3 player
4. Double click the file you want to view
    - VLC Player is recommended for watching videos

## TROUBLESHOOTING

### THE DEVICE WON'T TURN ON

- Charge the device for at least 4 hours before the first use.
- Make sure the charging cable is securely inserted into the device and into the power source.

### THE DEVICE ISN'T CHARGING

- Replace the charging cable.
- If you are charging via a wall power source, you may need to charge via your PC. The AC adapter might be bad.

### THE DEVICE HAS CRASHED

- You need to reset the device.

### MY COMPUTER DOESN'T RECOGNIZE THE DEVICE

- Unplug the device from your PC and reboot the device.
- Unplug the device from your PC and reboot your PC.
- Try using a different USB slot on your PC.
- Replace the USB cable.

### THE SOUND OR VIDEO IS UNCLEAR

- The device needs charging.

### THE YELLOW INDICATOR LIGHT BLINK WHEN I TRY TURNING ON THE MP3 PLAYER

- Insert a MicroSD card

### THE YELLOW LIGHT IS BLINKING FIVE TIMES AND THEN SHUTTING DOWN

- The battery is low

### OTHER PROBLEMS

- Call our technical support at **770-694-6921**

## SPECIFICATIONS

<b>Video Resolution</b>	640*480
<b>Video Format</b>	AVI
<b>Frames per Second</b>	30
<b>Recording Time</b>	150 minutes
<b>Vision Angle</b>	65°
<b>Motion Detection</b>	No
<b>Photo Resolution</b>	1280*960
<b>Photo Format</b>	JPG
<b>Water Resistant</b>	No
<b>Battery Life</b>	2 hours
<b>Type of Memory</b>	MicroSD Card
<b>Memory Capacity</b>	2GB–16GB
<b>Recording Capacity</b>	2GB ≈ 80 minutes (1.3 hours) 4GB ≈ 160 minutes (2.6 hours) 8GB ≈ 320 minutes (5.3 hours) 16GB ≈ 640 minutes (10.6 hours)
<b>USB Interface</b>	1.0 USB
<b>Player Software</b>	VLC recommended
<b>Operating Systems</b>	Windows 2000 Windows Me Windows XP Windows Vista Windows 7 Mac OSX Linux