



# Refrigerator user manual

English

imagine the possibilities

Thank you for purchasing a Samsung product.  
To receive a more complete service,  
please register your product at  
[www.samsung.com/global/register](http://www.samsung.com/global/register)

**SAMSUNG**

# features of your new refrigerator

---

## KEY FEATURES OF YOUR NEW REFRIGERATOR

---

Your Samsung Side-By-Side Refrigerator comes equipped with many space-saving, innovative storage and energy-efficient features.

- **Twin Cooling Plus™**

By monitoring the states of the freezer and the fridge compartments on a real time basis, it runs both of the evaporators in optimal conditions and makes it possible to maintain world best performance of humidity in the fridge compartment and extend storage life with much freshness.

- **Multi Airflow**

Provides even cooling throughout the refrigerator to maintain optimal temperatures to keep food fresh.

- **LED Tower Lighting**

See everything in a new light with LED tower lighting.

- **Premium Design Ice and Water Dispenser**

Quick and easy access to filtered water and cubed/crushed ice at your fingertips with the external dispenser.

- **External Digital Display and Control**

Controlling the refrigerator is easy with the external digital display. It shows the inside temperatures, when to change your filter and also controls the ice and water dispenser.

- **Clear View Icemaker**

The Icemaker is located in the freezer door, this ensures that all the freezer shelf space can be fully utilized. Ice cubes are quickly produced and the clear ice bucket lets you easily see the amount of ice cubes produced.

- **Auto-moisture Drawer**

A "Shape Memory Polymer" is equipped on the "Auto-moisture Drawer(crisper)", which allows the automatic humidity control. To maintain the optimal humidity in the crisper, the fine-mesh holes in the polymer control the flow of moisture through hole according to the humidity in the bin.




For easy future reference write the model and serial number down. You will find your model number on the left hand side wall of the refrigerator.


Model # \_\_\_\_\_

Serial # \_\_\_\_\_



# safety information

## SAFETY INFORMATION








-  **WARNING** • Before operating the appliance, please read this manual thoroughly and retain it for your reference.

-  **WARNING** • Because these following operating instructions cover various models, the characteristics of your refrigerator may differ slightly from those described in this manual.

### CAUTION/WARNING SYMBOLS USED

 <b>WARNING</b>	Indicates that a danger of death or serious injury exists.
 <b>CAUTION</b>	Indicates that a risk of personal injury or material damage exists.

### OTHER SYMBOLS USED

	Represents something you must NOT do.
	Represents something you must NOT disassemble.
	Represents something you must NOT touch.
	Represents something you must follow.
	Indicates that you must disconnect the power plug from the socket.
	Represents a ground is needed to prevent electric shock.
	It is recommended that this symbol be handled by service man.

**These warning signs are here to prevent injury to you and others.**

**Please follow them explicitly.**

**After reading this section, keep it in a safe place for future reference.**

- This refrigerator must be properly installed and located in accordance with the manual before it is used.
- Use this appliance only for its intended purpose as described in this instruction manual.
- We strongly recommend that any servicing be performed by a qualified individual.
- R600a or R134a can be used as a refrigerant. Check the compressor label on the rear of the appliance and the rating label inside the fridge to see which refrigerant is used for the refrigerator.



- In case of R600a refrigerant, this gas is natural gas with high environmental compatibility that is, however, also combustible. When transporting and installing the appliance, care should be taken to ensure that no parts of the refrigerating circuit are damaged.
- Refrigerant squirting out of the pipes could ignite or cause an eye injury. If a leak is detected, avoid any naked flames or potential sources of ignition and air the room in which the appliance is standing for several minutes.

# safety information

---



## **WARNING**

- In order to avoid the creation of a flammable gas-air mixture if a leak in the refrigerating circuit occurs, the size of the room in which the appliance may be sited depends on the amount of refrigerant used.
- Never start up an appliance showing any signs of damage. If in doubt, consult your dealer.
- The room must be 1 m<sup>3</sup> in size for every 8g of R600a refrigerant inside the appliance.
- The amount of refrigerant in your particular appliance is shown on the identification plate inside the appliance.
- Please dispose of the packaging material for this product in an environmentally friendly manner.
- Pull the power plug out of the socket before changing the interior light of the refrigerator.
  - Otherwise, there is a risk of electric shock.

## **SEVERE WARNING SIGNS**

---



## **WARNING**

- Do not install the refrigerator in a damp place or place where it may come in contact with water.
  - Deteriorated insulation of electrical parts may cause an electric shock or fire.
- Do not place this refrigerator in direct sunlight or expose to the heat from stoves, room heaters or other appliance.
- Allow sufficient space to install the refrigerator on a flat surface.
  - If your refrigerator is not level, the internal cooling system may not work correctly.
- Do not plug several appliances into the same power socket. The refrigerator should always be plugged into its own individual electrical which has a voltage rating that matched the rating plate.
  - This provides the best performance and also prevents overloading house wiring circuits, which could cause a fire hazard from overheated wires.
- Never unplug your refrigerator by pulling on the power cord. Always grip plug firmly and pull straight out from the outlet.
  - Damage to the cord may cause a short-circuit, fire and/or electric shock.
- Make sure that the power plug is not squashed or damaged by the back of the refrigerator.
- Do not bend the power cord excessively or place heavy articles on it.
  - This constitutes a fire hazard.
- Have the power cord repaired or replaced immediately by the manufacturer or its service agent if power cord has become frayed or damaged.
- Do not use a cord that shows cracks or abrasion damage along its length or at either end.
- If the power cord is damaged, have it replaced immediately by the manufacturer or its service agent.
- When moving the refrigerator, be careful not to roll over or damage the power cord.
- Do not insert the power plug with wet hands.
- Unplug the refrigerator before cleaning and making repairs.
- Do not use a wet or damp cloth when cleaning the plug.
- Remove any foreign matter or dust from the power plug pins.
  - Otherwise there is a risk of fire.
- If the refrigerator is disconnected from the power supply, you should wait for at least ten minutes before plugging it back.
- If the wall socket is loose, do not insert the power plug.
  - There is a risk of electric shock or fire.
- The appliance must be positioned so that the plug is accessible after installation.



- The refrigerator must be grounded.

- You must ground the refrigerator to prevent any power leakages or electric shocks caused by current leakage from the refrigerator.



- Never use gas pipes, telephone lines or other potential lightening rods as ground.

- Improper use of the ground plug can result in electric shock.

- Do not disassemble or repair the refrigerator by yourself.

- You run risk of causing a fire, malfunction and/or personal injury.

- If you smell pharmaceutical or smoke, pull out power plug immediately and contact your Samsung electronics service center.

- Keep ventilation opening in the appliance enclosure or mounting structure clear of obstruction.

- Do not use mechanical devices or any other means to accelerate the defrosting process, other than those recommended by the manufacturer.

- Do not damage the refrigerant circuit.

- Do not place or use electrical appliance inside the refrigerator/freezer, unless they are of a type recommended by the manufacturer.

- Before changing the interior light, unplug the appliance from the power supply.

- If you experience difficulty when changing the light, contact your service center.

- The appliance is not intended for use by persons (including children) with reduced physical, sensory or mental capabilities, or lack of experience and knowledge, unless they have been given supervision or instruction concerning use of the appliance by a person responsible for their safety.

- Children should be supervised to ensure that they do not play with the appliance.

- Do not let children hang on the door. If not, a serious injury may occur.

- Do not touch the inside walls of the freezer or products stored in the freezer with wet hands.

- This may cause frostbite.

- If the refrigerator is not to be used for a long period of time, pull out the power plug.

- Deterioration in the power cord insulation may cause fire.

- Do not store articles on the top of the appliance.

- When you open or close the door, the articles may fall and cause personal injury and/or material damage.

## CAUTION SIGNS



### CAUTION

- This product is intended only for the storage of food in a domestic environment.

- Manufacturer's recommended storage times and expiry dates of frozen foods should be adhered to. Refer to relevant instructions

- Bottles should be stored tightly together so that they do not fall out.

- Do not place carbonated or fizzy drinks in the freezer compartment

- Do not overfill the refrigerator with food.

- When you open the door, an item may fall out and cause personal injury or material damage.

- Do not put bottles or glass containers in the freezer.

- When the contents freeze, the glass may break and cause personal injury.

- Do not spray inflammable gas near the refrigerator.

- There is a risk of explosion or fire.

- Do not directly spray water inside or outside the refrigerator.

- There is a risk of fire or electric shock.

- Do not store volatile or flammable substances in the refrigerator.

- The storage of benzene, thinner, alcohol, ether, LP gas and other such products may cause explosions.

- If you have a long vacation planned, it is advisable to empty the appliance or use the vacation function.

- Do not re-freeze frozen foods that have thawed completely.

- Do not store pharmaceuticals products, scientific materials or temperature-sensitive products in the refrigerator.

- Products that require strict temperature controls must not be stored in the refrigerator.

- Do not put a container filled with water on the refrigerator.

- If spilled, there is a risk of fire or electric shock.

# safety information

---

## CAUTION SIGNS FOR CLEANING

---

- Do not insert your hands into the bottom area under the appliance.
  - Any sharp edges may cause personal injury.
- Never put fingers or other objects into the dispenser hole and ice chute.
  - It may cause personal injury or material damage.
- Do not use a wet or damp cloth when cleaning the plug, remove any foreign material or dust from the power plug pins.
  - Otherwise there is a risk of fire.

## WARNING SIGNS FOR DISPOSAL

---

- When disposing of this or other refrigerators, remove the door/door seals, door latch so that small children or animals cannot become trapped inside.
- Leave the shelves in place so that children may not easily climb inside.
- R600a or R134a is used as a refrigerant. Check the compressor label on the rear of the appliance or the rating label inside the fridge to see which refrigerant is used for your refrigerator. When this product contains flammable gas(Refrigerant R600a) contact your local authority in regard to safe disposal of this product.
- Cyclopentane is used as a insulation blowing gas. The gases in insulation material require special disposal procedure. Please contact your local authorities in regard to the environmentally safe disposal of this product. Ensure that none of the pipes on the back of the appliances are damaged prior to disposal. The pipes shall be broke in the open space.



In the event of a power failure, call the local office of your Electricity Company and ask how long it is going to last.

Most power failures that are corrected in an hour or two will not affect your refrigerator temperatures.

However, you should minimize the number of door openings while the power is off.

But should the power failure last more than 24hours, remove all frozen food.

For doors or lids fitted with locks and keys, the keys be kept out of the reach of children and not in the vicinity of the refrigerating appliance, in order to prevent children from being locked inside.

# safety information

---

## ADDITIONAL TIPS FOR PROPER USAGE

---



- Allow the appliance to stand for 2 hours after installation.
- To get best performance of product,
  - Do not place foods too closely in front of the vents at the rear of the appliance as it can obstruct free air circulation in the freezer compartment.
  - Wrap the food up properly or place it in airtight containers before put it into the fridge freezer
  - Do not put any newly introduced food for freezing near to already frozen food.
- There is no need to disconnect the refrigerator from the power supply if you will be away for less than three weeks. But, remove all the food if you are going away for the three weeks or more. Unplug the refrigerator and clean it, rinse and dry.
- The appliance might not operate consistently (possibility of defrosting of contents or temperature becoming too warm in the frozen food compartment) when sited for an extended period of time below the cold end of the range of temperatures for which the refrigerating appliance is designed.
- Do not store food which goes bad easily at low temperature, such as bananas, melons.
- Place the ice tray at the originally provided position by manufacturer in order to achieve optimal ice-freezing.
- Your appliance is frost free, which means there is no need to manually defrost your appliance, as this will be carried out automatically.
- Temperature rising during the defrost can comply with ISO requirement. But If you want to prevent an undue rise in the temperature of the frozen food while defrosting the appliance, please wrap the frozen food in several layers of paper such as newspaper.
- Any increase in temperature of frozen food during defrosting can shorten its storage life.
- Contains fluorinated greenhouse gases covered by the Kyoto Protocol.
- Foam blown with fluorinated greenhouse gases.

# contents

---

## **SETTING UP YOUR SIDE-BY-SIDE REFRIGERATOR**

9

- 9 Getting ready to install the refrigerator
- 11 Setting up the refrigerator doors
- 14 Levelling the refrigerator
- 15 Making minor adjustments to the doors
- 16 Checking the water dispenser line
- 17 Installing the water dispenser line
- 19 Setting up the refrigerator

## **OPERATING THE SAMSUNG SIDE-BY-SIDE REFRIGERATOR**

21

- 20 Operating the refrigerator
- 21 Using the control panel/Digital display
- 22 Controlling the temperature
- 23 Using the ice and cold water dispenser
- 24 Storing food
- 26 Using the CoolSelect Zone™ Drawer (Optional)
- 27 Removing the freezer/fridge accessories
- 28 Cleaning the refrigerator
- 29 Changing the interior lights, the water filters
- 30 Using the doors

## **TROUBLESHOOTING**

31



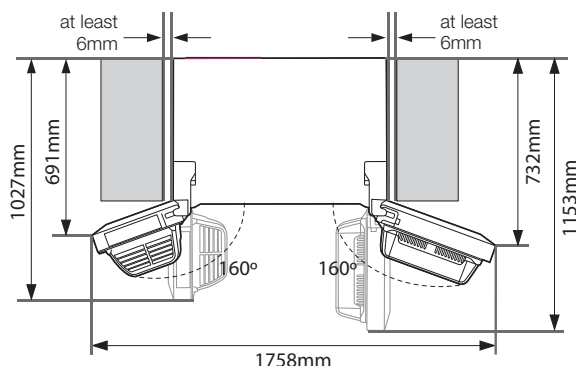
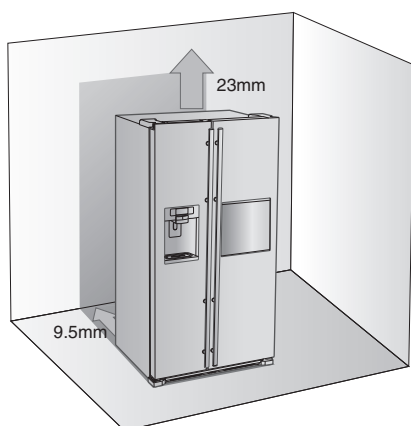
# setting up your side-by-side refrigerator

## GETTING READY TO INSTALL THE REFRIGERATOR

Congratulations on the purchase of your Samsung Side-By-Side Refrigerator. We hope you will enjoy the many state-of-the-art features and efficiencies that this new appliance has to offer.

### Selecting the best location for the refrigerator

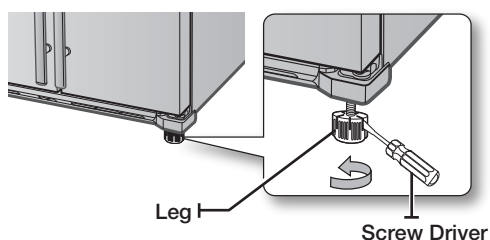
- Select a location with easy access to the water supply.
- Select a location without direct exposure to sunlight.
- Select a location with level (or nearly level) flooring.
- Select a location with enough space for the refrigerator doors to open easily.
- Allow sufficient space to install the refrigerator on a flat surface.
  - If your refrigerator is not level, the internal cooling system may not work correctly.
  - Refer to drawing and dimensions below for overall space required for use.



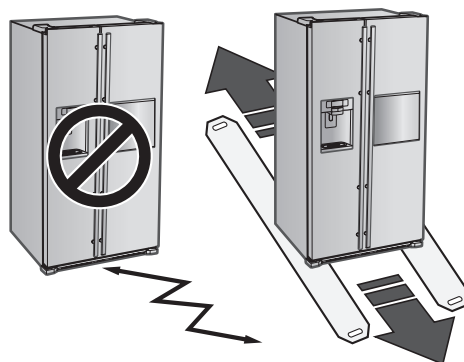
### When moving your refrigerator

To prevent floor damage be sure the front levelling legs are in the up position (above the floor). Refer to 'Levelling the refrigerator' in the manual(at page 14).

To protect the finish of the flooring, place the protection sheet such as packing carton under the refrigerator.



When installing, servicing or cleaning behind the refrigerator, be sure to pull the unit straight out and push back in straight after finishing.



First things first! Make sure that you can easily move your refrigerator to its final location by measuring doorways (both width and height), thresholds, ceilings, stairways, etc. The following chart details the exact height and depth.

MODEL			RSG5*
Dimension(mm)	Width	Without Door	908
		With Door	912
	Depth	Only Cabinet	600
		Without Handle	687
		With Handle	737
	Height	Without Door	1740
		With Door	1773



- Allow clearance to the right, left, back and top when installing. This will help reduce power consumption and keep your energy bills lower.
- Do not install the refrigerator where the temperature can drop below 10°C.
- Make sure you disconnect the water supply line BEFORE removing the freezer door. See the next section on "Separating the Water Line" to avoid damage.

## BEFORE USING ICEMAKER

### Remove

- Hold the handle as shown in figure1.
- Slightly pull up the bottom part.
- Take out the ice bucket slowly.

### Install

- Assemble it in the reverse order of disassembly.
- Push the bucket in firmly until you hear a clicking sound.
- When the bucket does not fit into its place, turn the gear handle on its back by 90 degrees and reinstall it again as shown in figure 2.

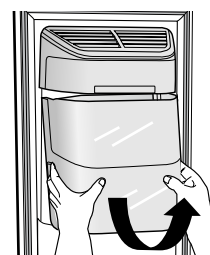


Figure1

### Before calling service

- Any sounds you hear when the ice maker dumps ice into the bucket are part of normal operation.
- Not dispensing ice for long periods may cause ice clumps in the ice bucket. Remove the remaining ice and empty the bucket.
- When ice does not come out, check the ice stuck in the chute and remove it.

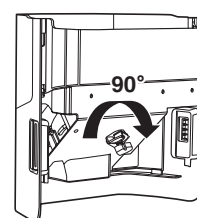
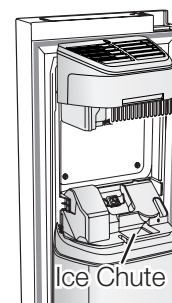


Figure2



### CAUTION

- When ICE OFF blinks on the display panel, reinsert the bucket and/or make sure it's installed properly.
- When the door is open, the Ice and water dispenser do not work.
- If you close the door hard, it may cause water spilling over the ice maker.
- To prevent dropping the ice bucket, use both hands when removing it.
- To prevent injury, be sure to clean up any ice or water that may have dropped on the floor.
- Do not let the children hang on the ice dispenser or on the bucket. They may get hurt.
- Be sure not to put your hand or any object into the ice chute. It may cause personal injury or damage mechanical parts.



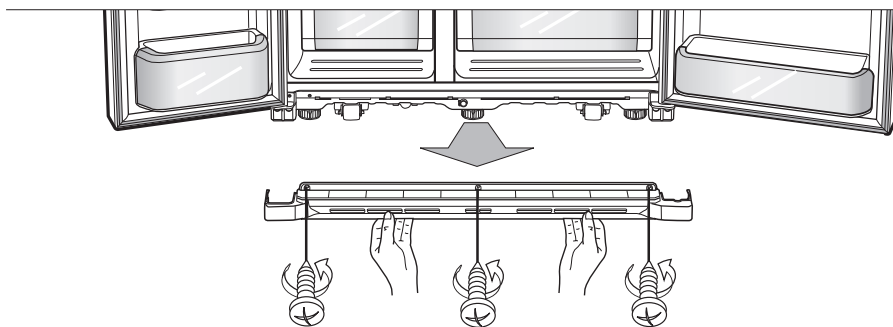
# setting up your side-by-side refrigerator

## SETTING UP THE REFRIGERATOR DOORS

If your entrance won't allow the refrigerator to pass easily through it, you can remove the doors.

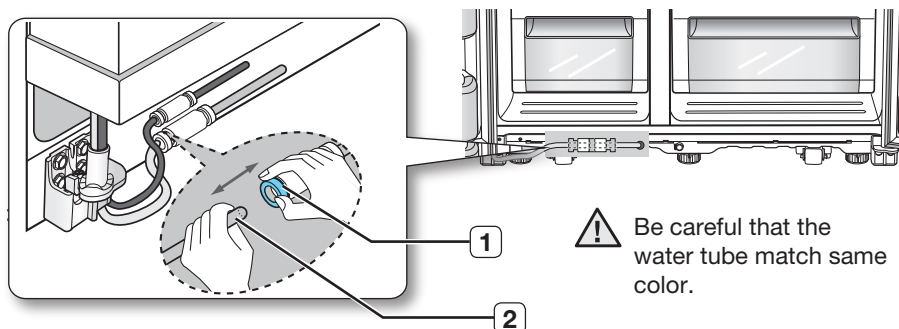
### Removing the Front Leg Cover

First, open both the freezer and refrigerator doors, and then take off the front leg cover by turning the three screws counter-clockwise.



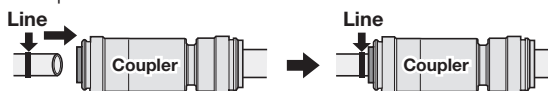
### Separating the Water Supply Line from the Refrigerator

1. Remove two water lines (gray one is for ice and the other one is for water) by pressing the coupler **1** and pulling the water line **2** away.

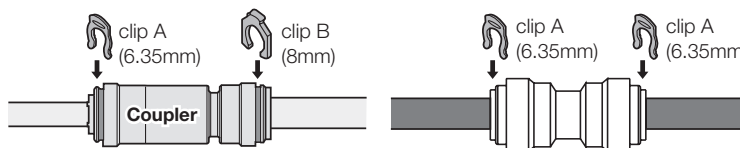


### Reattaching the Water Supply Line

1. Water line must be fully inserted to the marked line to prevent water leakage and water dripping of water dispenser.



2. Insert the 4 clips in the install pack and check that each clip holds the line firmly.

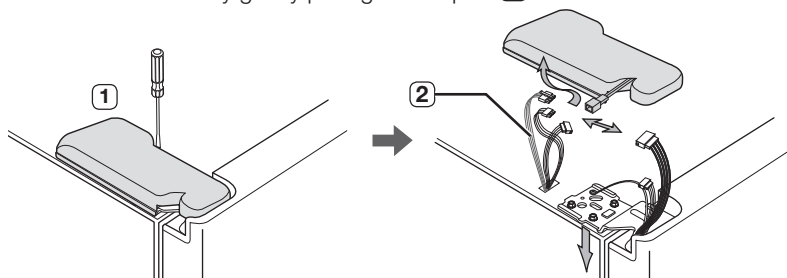


 Do not cut the water line. Gently separate it from the coupler.

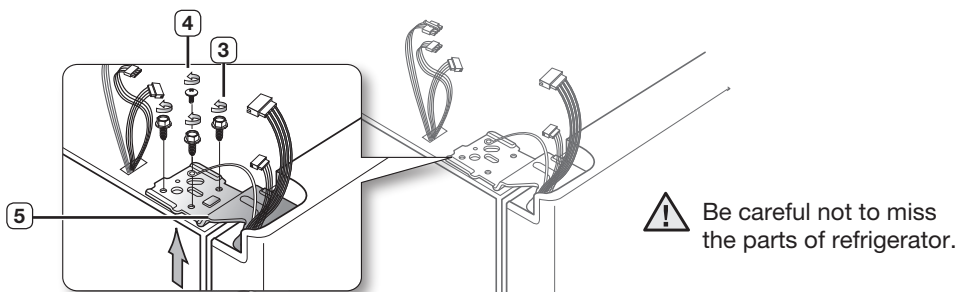
## Removing the freezer door

A few things to mention first.

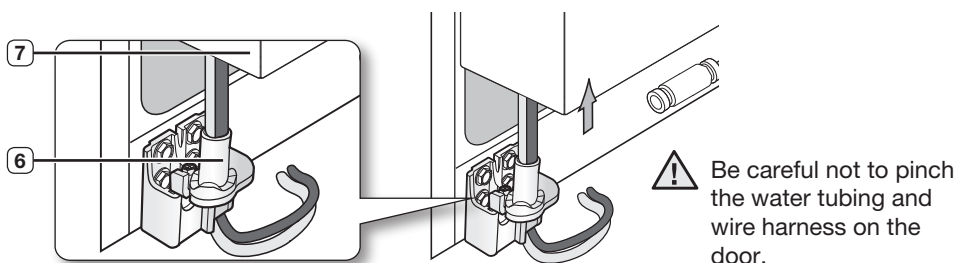
- Make sure that you lift the door straight up so the hinges are not bent or broken.
  - Be careful not to pinch the water tubing and wire harness on the door.
  - Place doors on a protected surface to prevent scratching or damage.
1. With the Freezer door closed, remove the upper hinge cover **1** using a screwdriver, and then disconnect the wires by gently pulling them apart **2**.



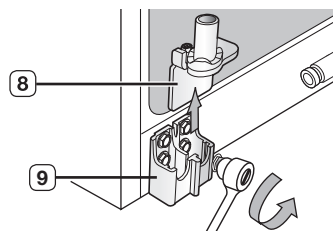
2. Remove hinge screws **3** and the ground screw **4** by turning counter-clockwise, and take off the upper hinge **5**. Be careful that the door does not fall on you as you are removing it




3. Next, remove the door from the lower hinge **6** by carefully lifting the door straight up **7**.



4. Remove the lower hinge **8** from the bracket **9** by gently lifting the lower hinge upwards.

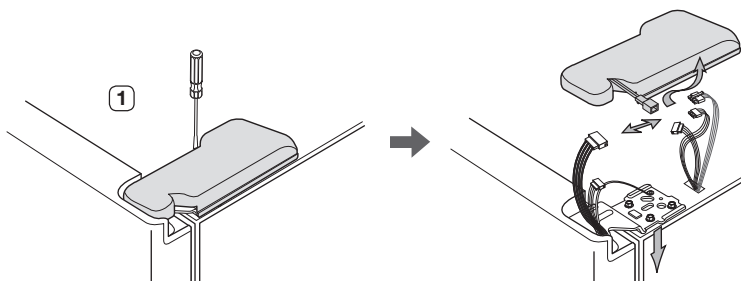


## Reattaching the freezer doors

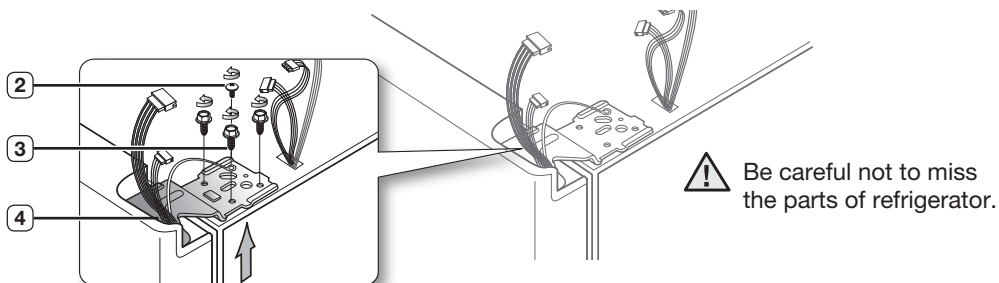
 To reattach the freezer doors, assemble parts in reverse order

## Removing the Fridge Door

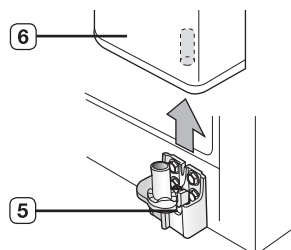
1. With the door closed, remove the upper hinge cover **1** using a screwdriver.



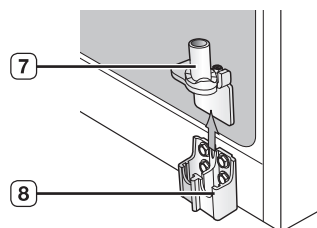
2. Remove hinge screws **2** and the ground screw **3** by turning counter-clockwise, and take off the upper hinge **4**. Be careful that the door does not fall on you as you are removing it.



3. Remove the door from the lower hinge **5** by lifting the door straight up **6**.



4. Remove the lower hinge **7** from the bracket **8** by gently lifting the lower hinge upwards.

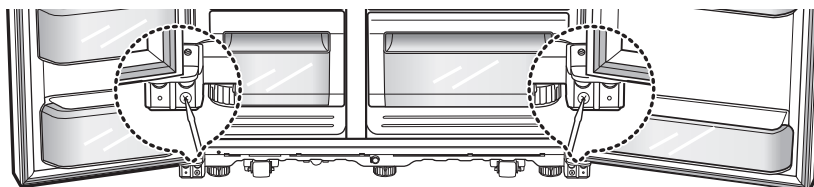


## Reattaching the Fridge door

**!** To reattach the fridge doors, assemble parts in reverse order.

## Fixing the Doors

Fix the Doors by assembling 2 screws as shown after finishing all operations.



## LEVELLING THE REFRIGERATOR

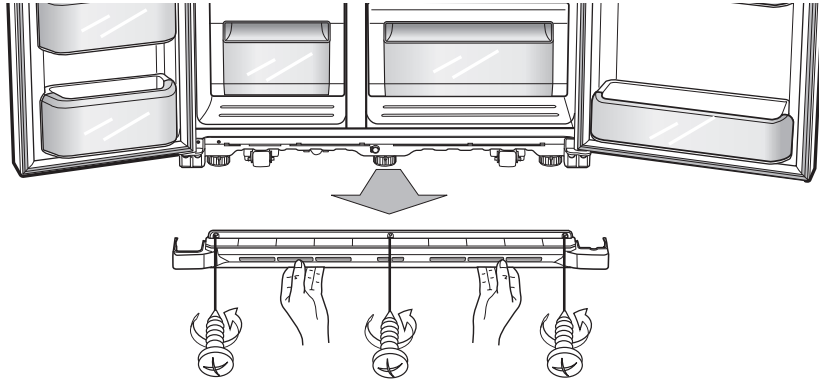
---

Now that the doors are back on the refrigerator, you want to make sure the refrigerator is level so that you can make final adjustments. If the refrigerator is not level, it will not be possible to get the doors perfectly even.

 The front of the refrigerator is also adjustable.

### Before levelling the refrigerator, remove the front leg cover

Open both the freezer and fridge doors, and then take off the front leg cover by turning the three screws counter-clockwise.



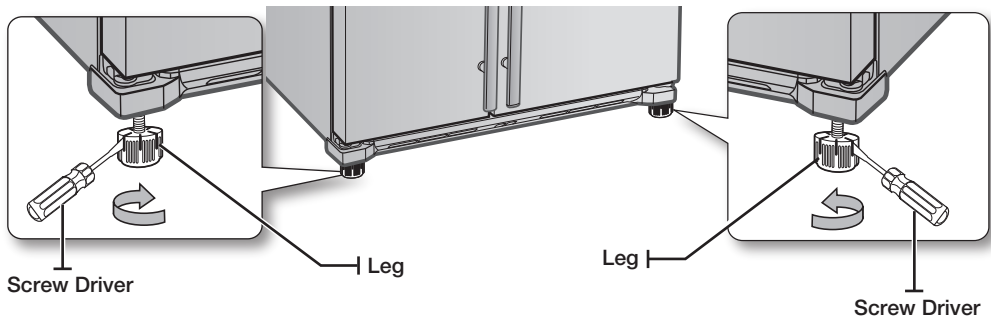
---

### When the Freezer door is lower than the fridge


Insert a flat-blade screwdriver into a slot on the Leg, turn it clockwise or counter clockwise to level the freezer.

### When the Freezer door is higher than the fridge

Insert a flat-blade screwdriver into a slot on the Leg, turn it clockwise or counter clockwise to level the fridge.



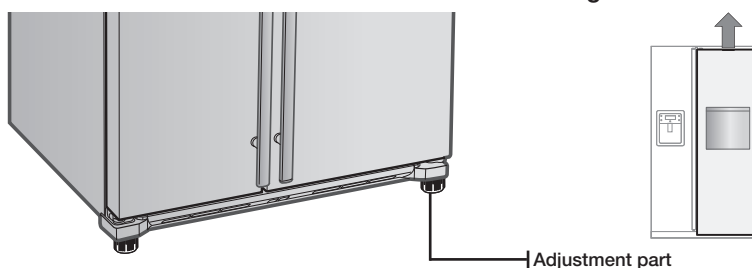
---

 Refer to the next section for the best way to make very minor adjustments to the doors.

## MAKING MINOR ADJUSTMENTS TO THE DOORS

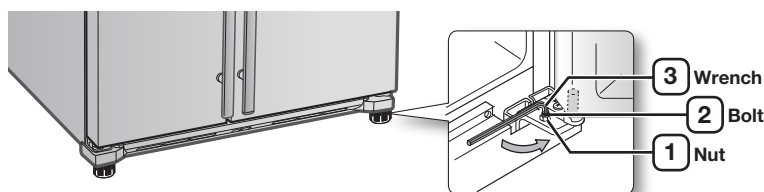
Remember, a levelling refrigerator is necessary for getting the doors perfectly even. If you need help, review the previous section on levelling the refrigerator.

**When the door of the freezer is higher than the fridge**



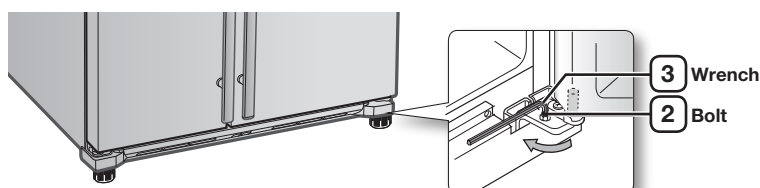
In the case of the process to correct the imbalance is the same. Open the doors and adjust them, one at a time, as follows:

1. Unscrew the nut **1** from the lower hinge until it reaches the upper end of the bolt **2**.



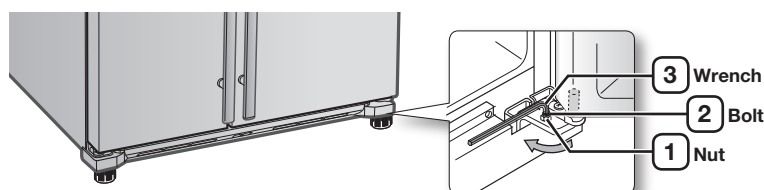
- When you release the nut **1**, make sure that you use the Allen wrench provided **3** to loosen the bolt **2** in a counter-clockwise direction. You should then be able to unscrew the nut **1** with your fingers.

2. Adjust the height difference between the doors by turning the bolt **2** clockwise or counter clockwise .



- When you turn clockwise , the door will move up.

3. After adjusting the doors, turn the nut **1** clockwise until it reaches the lower end of the bolt, then tighten the bolt again with the wrench **3** to fix the nut in place **1**.



- If you do not secure the nut firmly, the bolt may release.

## CHECKING THE WATER DISPENSER LINE

A water dispenser is just one of the helpful features on your new Samsung refrigerator. To help promote better health, the Samsung water filter removes unwanted particles from your water. However, it does not sterilize or destroy microorganisms. You will need to purchase a water purifying system to do that.

In order for the icemaker to operate properly, water pressure of 138 ~862 kPa is required. Under normal conditions, a 170 cc paper cup can be filled in 10 seconds.

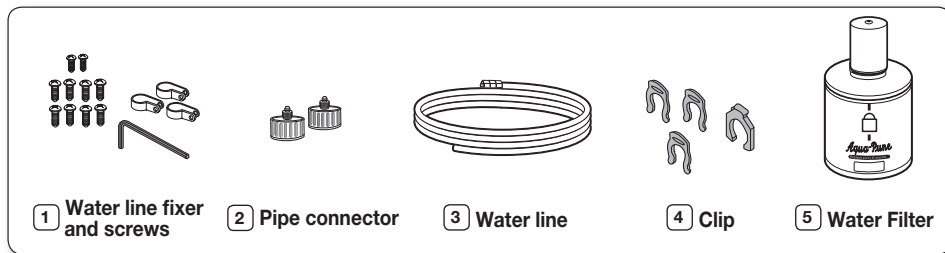
If the refrigerator is installed in an area with low water pressure (below 138 kPa), you can install a booster pump to compensate for the low pressure.

Make sure the water storage tank inside the refrigerator is properly filled. To do this, press the water dispenser lever until the water runs from the water outlet.



Water Line installation Kits are included with unit. You can find it in freezer(or fridge) drawer.

### Parts for water line Installation

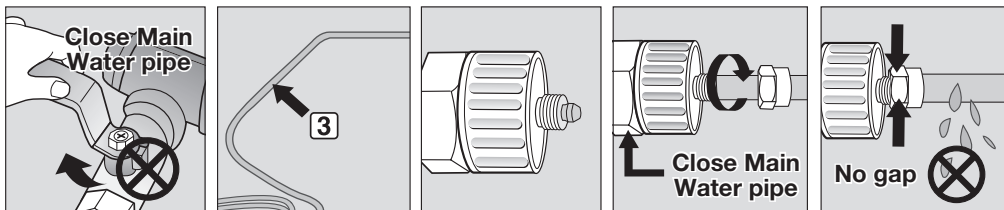


### Connecting to the water supply line

1. First, shut off the main water supply line.
2. Locate the nearest cold, drinking water line.
3. Follow the Water Line Installation Instructions in the installation kit.

#### CAUTION

The water line must be connected to the cold water pipe. If it is connected to the hot water pipe, it may cause the purifier to malfunction.



4. After connecting the water supply to the water filter, turn your main water supply back on and Dispense about 3L to clear and prime the water filter.

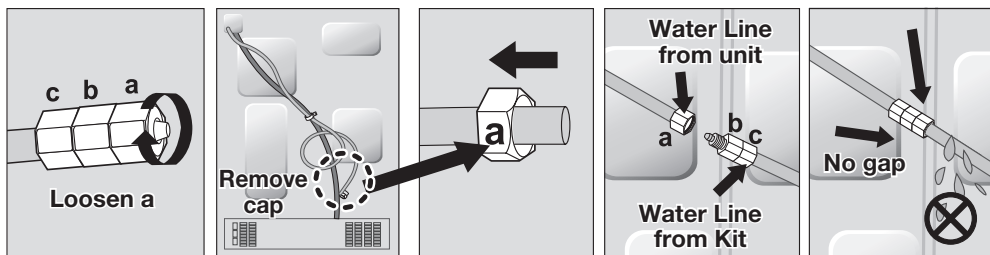


# setting up your side-by-side refrigerator

## INSTALLING THE WATER DISPENSER LINE

### Connecting the water line to the refrigerator

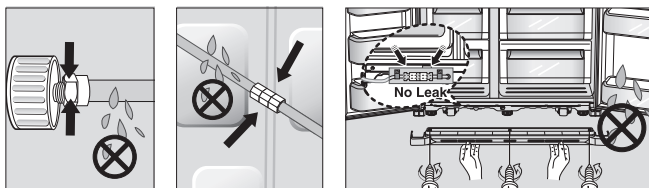
1. Remove the cap from water line on the unit and insert compression nut to the water line on the unit after disassembling from provided water line.
2. Connect both water line from the unit and water line in the kit
3. Tighten the compression nut onto the compression fitting. Be careful no gap between two items.
4. Turn water on and check for any leakage.



- Only connect the water line to a drinkable water source.  
If you have to repair or disassemble the water line, cut off 6.5mm of the plastic tubing to make sure you get a snug, leak-free connection.

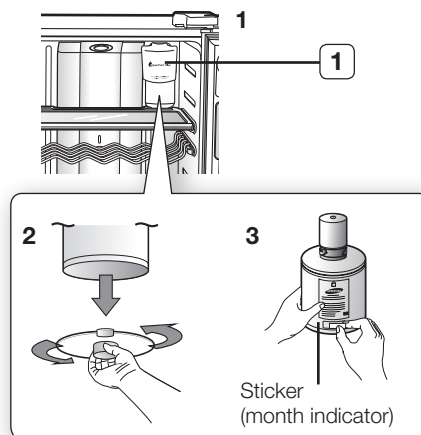
**CAUTION** Before being used, the leakage in these places should be examined

- Samsung Warranty does not cover WATER LINE INSTALLATION.
- It'll be done at customer's charge unless the retail price includes installation cost.
- Please contact Plumber or Authorized Installer for the installation if needed.
- If Water leakage occurs due to improper installation, Please contact installer.

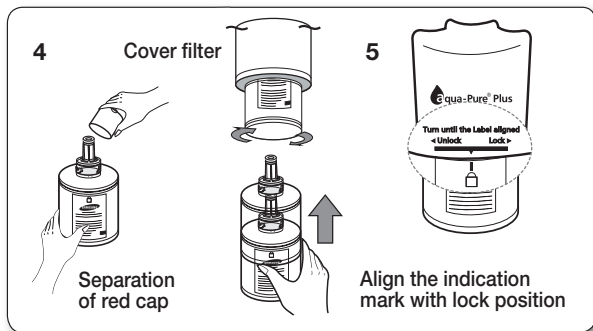


### Installing the water filter.

- Before installing the water filter, please remove the top shelf.
1. Remove the water filter cover (1)
  2. Remove the fixed cap by turning it counter clockwise. Keep the cap in a safe place for later use if you don't use a filter.
  3. Remove the water filter from the box and put a replacement indicator sticker on the filter as shown. Place a sticker on the filter that dates six months in the future. For example, if you install the water filter in March, put the "SEP" sticker on the filter to remind you to replace in September. That way you'll know when it is time to replace the filter. Normally, a filter life is about 6 months.




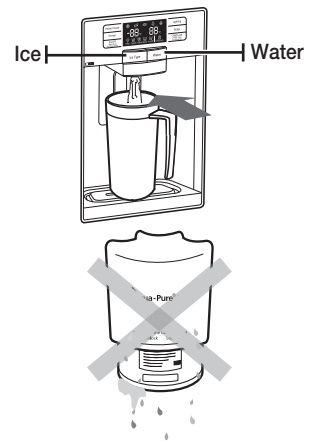
4. Remove the filter cap and insert the filter into the filter housing.
5. Slowly turn the water filter 90° clockwise to align with the printing mark on the cover, locking the filter in position. Make sure to align the water filter label mark with center of cover filter printing as illustrated. Remember, do not over-tighten.



## Removing any residual matter inside the water supply line after installing filter.

1. Turn ON the main water supply.
2. Press the Water button and push the dispenser pad.
3. Run water through the dispenser until the water runs clear (approx. 3L). This will clean the water supply system and remove air from the lines.
4. Additional flushing may be required in some households.
5. Open the refrigerator door and make sure there are no water leaks coming from the water filter.

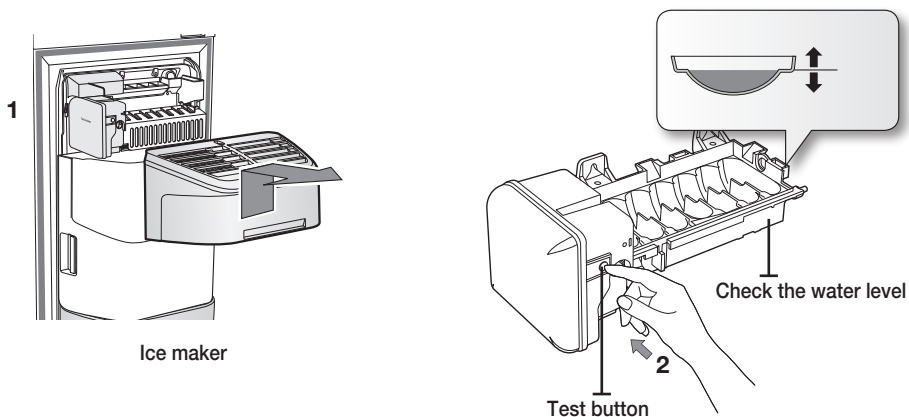
 A newly installed water filter cartridge may cause water to briefly spurt from the water dispenser. This is due to air getting into the line. It should pose no problem to operation.



## Check the amount of water supplied to the ice tray.

1. Lift up the icemaker cover and gently pull out.
2. When you press the Test button for 3 seconds, the ice cube container is filled with water from the water supply tap. Check to make sure the amount of water is correct (see the illustration below).

If the water level is too low, the ice cubes will be small. This is a water pressure problem from within the main water pipes, not the refrigerator.



- It will take a few minutes to reach the amount of water you want.
- Do not press the test button continuously when the tray is filled with ice or water as illustration below. Water may overflow or ice jamming may occur.
- When the bucket is not installed, the ice maker does not work.
- When ICE OFF blinks on the display panel, reinsert the bucket and/or make sure it's installed properly.

# setting up your side-by-side refrigerator

---

## SETTING UP THE REFRIGERATOR

---

Now that you have your new refrigerator installed and in place, you are ready to set up and enjoy the full features and functions of the appliance.

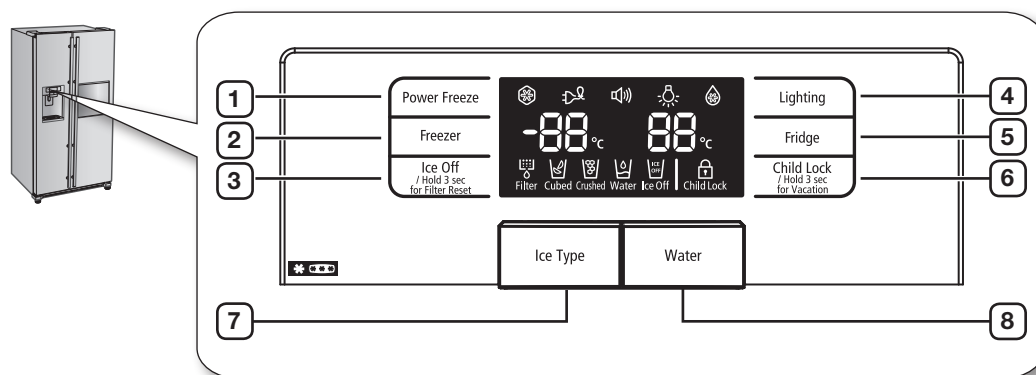
By completing the following steps, your refrigerator should be fully operational. If not, first check the power supply and electricity source or try the troubleshooting section at the back of this user guide. If you have any further questions, contact your Samsung Electronics call center.

1. Place the refrigerator in an appropriate location with reasonable clearance between the wall and the refrigerator. Refer to installation instructions in this manual.
2. Once the refrigerator is plugged in, make sure the interior light comes on when you open the doors.
3. Set the temperature control to the coldest temperature and wait for an hour. The freezer should get slightly chilled and the motor should run smoothly.
4. After powering the refrigerator, it will take a few hours to reach the appropriate temperature. Once the refrigerator temperature is sufficiently cool, you can store food and drink in the refrigerator.

# operating the SAMSUNG side-by-side refrigerator

## OPERATING THE REFRIGERATOR

### Using the Control Panel / Digital Display



<b>1 Power Freeze Button</b>	Speeds up the time needed to freeze products in the freezer. This can be helpful if you need to quickly freeze items that spoil easily or if the temperature in the freezer has warmed dramatically (For example, if the door was left open). This Function must be activated before putting large stuff in freezer compartment at least 24 hours before.
<b>2 Freezer Button</b>	Press the <b>Freezer</b> button to set the freezer to your desired temperature. You can set the temperature between -14°C and -25°C.
<b>3 Ice Off Button</b>	<p>Press the <b>Ice Off</b> button to turn the ice making function off. When Ice Off blinks on the display panel, reinsert the bucket and/or make sure it's installed properly.</p> <p>When you change the filter, press and hold this button for 3 seconds to reset the filter schedule.</p>
<b>4 Lighting Button</b>	Press the <b>Lighting</b> button for the dispenser LED lamp to stay on.
<b>5 Fridge Button</b>	Press the <b>Fridge</b> button to set the fridge to your desired temperature. You can set temperature between 1°C ~ 7°C and Power cool. Power cool will be on the display after 1°C
<b>6 Child Lock Button</b>	<p>By pressing this button, all buttons will be locked. The Ice Type button and the dispenser pad will not work either. To cancel this function, press this button again.</p> <p>If you are going on vacation or business trip or you do not need to use the refrigerator, press and hold this button for 3 seconds. The temperature in the fridge will be around 15°C and the freezer will work normally.</p>
<b>7 Ice Type Button</b>	Press the <b>Ice Type</b> button to choose cubed or crushed ice.
<b>8 Water Button</b>	Press the <b>Water</b> button for water.

## USING THE DIGITAL DISPLAY

“Freezer Temp.” indicates the current Freezer temperature.

“Fridge Temp.” indicates the current Fridge temperature.

When not in use the Display will turn off, this is normal.

### Power Freeze

This icon will light up when you activate the “Power Freeze” feature. “Power Freeze” is great for times when you need a lot of ice. When you have enough, just press the button again to cancel the “Power Freeze” mode.



When you use this function the energy consumption of the refrigerator will increase. Remember to turn it off when you don't need it and return the freezer to your original temperature setting.

### Vacation

This icon will light up when you activate the “Vacation” feature.

If you are going on vacation or business trip or you do not need to use the refrigerator, press and hold the Child Lock button for 3 seconds. The temperature in the fridge will be around 15°C and the freezer will work normally. The refrigerator section should be emptied.

### Alarm

This icon will light up all the time. The door alarm will sound if any door is open for more than 2 minutes. The beeping stops when you close the door. If you need to turn off the Alarm function, press the Lighting and Fridge buttons for 3 seconds at the same time.

### Lighting

This icon will light up when you activate the “Lighting” feature. In this case, the dispenser light (under the display) will be on constantly. If you would like the dispenser light to come on only when using the dispenser, turn the “Lighting” feature off.

### Power Cool

This icon will light up when you activate the “Power Cool” feature.

For a quick fridge cool down, use “Power Cool”.

If you select “Power Cool”, the inside temperature of the Fridge will decrease for about two and a half hours.

### Filter Indicator

When the filter indicator light changes to red, it is time to change the filter. Typically this happens about every 6 months.

The filter Indicator will be Blue when you initially insert the water filter.

The filter Indicator will be purple when you have used your water filter for 5 months.

The filter Indicator will be Red when you have used your water filter for 6 months.

After removing the old water filter and installing a new one (see page 29 for instructions on how to do this), reset the indicator status light by pressing the Ice off button for about 3 seconds.

### Cubed Ice , Crushed Ice

Enjoy cubed or crushed ice by selecting your preference from the digital control panel. The ice type light indicates the type of ice that is currently chosen.

### Water

This icon will light up when you activate the “Water” feature.

## Ice Off

This icon will light up when you activate the “Ice Off” feature. In this case, the ice will not be produced. When Ice Off blinks on the display panel, reinsert the bucket and/or make sure it’s installed properly.

## Child Lock

This icon will light up when you activate the Child Lock function by pressing Child Lock button. Press this button again to reactivate. Use this function to prevent children from tampering with temperature and filter settings. Also, this button has another function. When this button is pressed (lock indication lamp turn on), the heater for sweat control is off at a same time. If sweat is appeared around the cover dispenser or beverage station with this function, press this button again. then, the light will turn off and the sweat control function will be performed. and all keys will be unlocked at a same time.

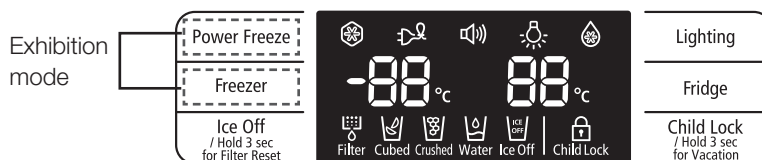
## Exhibition Mode



This function is for store display refrigerators. It is not for customer use.



In case of Exhibition Mode, the refrigerator works but doesn’t make cool air. To cancel this mode, press the Power Freeze and Freezer buttons at the same time for 8 seconds until a “Ding-dong” sound is heard and the unit will now cool.



## CONTROLLING THE TEMPERATURE

### Basic Temperature of Freezer and Fridge

The basic and recommended temperature of Freezer and Fridge compartments are -20°C/3°C. If the temperature of Freezer and Fridge compartments are too high or low, adjust the temperature manually.

### Controlling the Freezer temperature

The freezer temperature can be set between -14°C and -25°C to suit your particular needs.

Press the **Freezer** button repeatedly until the desired temperature is shown in the temperature display. Keep in mind that foods like ice cream may melt at -16°C.

The temperature display will move sequentially from -14°C and -25°C. When the display reaches -14°C, it will begin again at -25°C.

Five seconds after the new temperature is set the display will again show the actual current freezer temperature. However, this number will change as the Freezer adjusts to the new temperature.

### Controlling the Fridge temperature

The refrigerator temperature can be set between 7°C and 1°C to suit your particular needs.

Press the **Fridge** button repeatedly until the desired temperature is shown in the temperature display.

The temperature control process for the Fridge works just like the Freezer process.

Press the **Fridge** button to set your desired temperature. After a few seconds, the Fridge will begin tracking towards the newly set temperature. This will be reflected in the digital display.

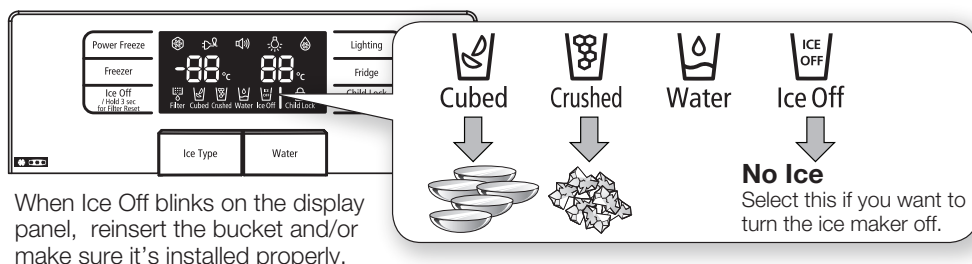
The temperature of the freezer or the refrigerator may rise from opening the doors too frequently, or if a large amount of warm or hot food is placed in either side.

This may cause the digital display to blink. Once the freezer and refrigerator return to their normal set temperatures the blinking will stop.

If the blinking continues, you may need to “reset” the refrigerator. Try unplugging the appliance, wait about 10 minutes and then plug back in.

# operating the SAMSUNG side-by-side refrigerator

## USING THE ICE AND COLD WATER DISPENSER

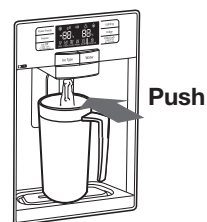


### Using the Water Dispenser

Press the Water button. Place your cup the water outlet and push gently against the dispenser pad. Make sure the glass is in line with the dispenser to prevent the water from splashing out.

To get cooler water

- The dispensed water is cool, not icy cold
- When you want colder water with ice, dispense ice to your drink glass first before filling it with water to prevent water from splashing out.



### Using the Ice Dispenser

Press the Ice Type button to select the type of ice you want.

Place your cup the ice outlet and push gently against the dispenser pad. Make sure the glass is in line with the dispenser to prevent the ice from bouncing out.

When Cubed Ice is selected after using the Crushed Ice feature, a small amount of residual crushed ice might be produced.



**WARNING**

- Do not put your fingers, hands or any other unsuitable objects in the chute or ice-maker bucket. - It may result in personal injury or material damage.
- Use only the ice maker provided with the refrigerator.
- The water supply to this refrigerator must only be installed/connected by a suitably qualified person and connect to a potable water supply only.
- In order to operate the ice maker properly, water pressure of 138 ~ 862 kPa is required.



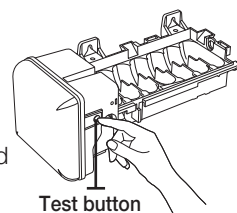
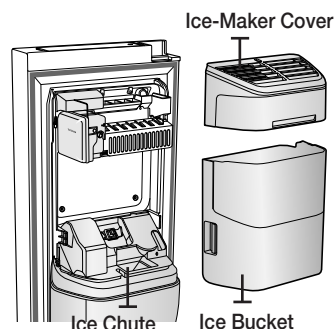
**CAUTION**

- If you have a long vacation or business trip and won't use water or ice dispensers, close the water valve. - Otherwise, water leakage may occur.
- When you have not used the Ice maker for a while, or you have opened the Freezer door frequently, the Ice may stick together. If this has occurred, empty the ice container or break up the ice with a wood kitchen tool. Do not use sharp items such as knives or forks.
- When the bucket is removed, there may still be some residual ice in the ice maker that will be produced.




**CAUTION**

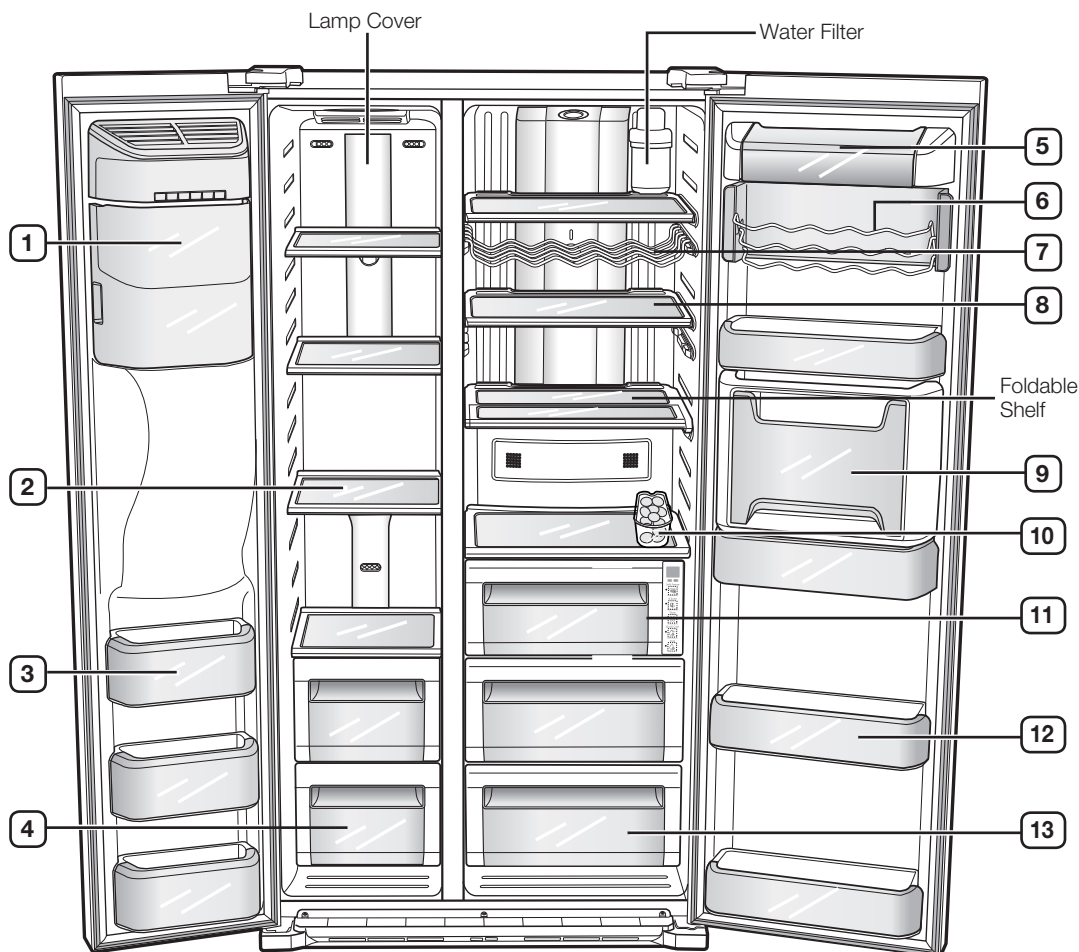
- In case ice doesn't come out, pull out the icemaker cover and press test button located on the ice maker.
- Do not press the test button continuously when the tray is filled with ice or water as illustration below. Water may overflow or ice jamming may occur




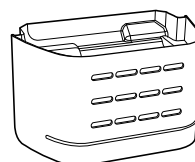
## STORING FOOD

The Samsung Side-By-Side Refrigerator has been designed to provide you with maximum spacesaving features and functions. Here are some of the customized compartments we have created to keep your food fresher, longer. Remember, in order to prevent odor penetration to the ice, stored food should be wrapped securely and as airtight as possible.


**CAUTION**  Because these following operating instructions cover various models, your refrigerator may differ those described in this manual.

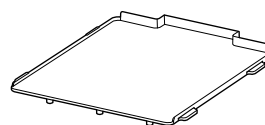


 For more space, you can store food with Guard FRE-UPP instead of the ice bucket (1).



GUARD FRE-UPP  
(Optional)





 To get more space, you can remove freezer drawers and locate the 'SHELF FRE-BOTTOM' on the bottom of the freezer, since it does not affect thermal and mechanical characteristics. A declared storage volume of frozen food storage compartment is calculated with these drawers removed.



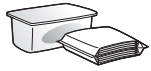





SHELF FRE-BOTTOM  
(Optional)





## Storing Food in the Freezer

<b>1 Ice Maker Bucket (Optional)</b>	<p>- Designed to store lots of ice easily.</p> <p> Do not put your fingers, hands or any other objects in the ice chute or the ice maker bucket. This may result in personal injury or material damage.</p> <p><b>WARNING</b></p>	
<b>2 Shelves</b>	Can be used to store all types of frozen food.	
<b>3 Door Bins</b>	Can be used for small packages of frozen food.	
<b>4 Drawers</b>	Best used to store meats or dry foods. Stored food should be wrapped securely using foil or other suitable wrapping materials or containers.	

## Storing Food in the Fridge

<b>5 Dairy Bin</b>	Can be used to store smaller dairy items like butter or margarine, yogurt or cream-cheese bricks.	
<b>6 Tilt Can Carry</b>	Can be used to store beverage can or bottle.	
<b>7 Wine Rack (optional)</b>	Helps wines maintain their taste by providing an optimized place for storing your wine bottles.	
<b>8 Shelves</b>	Designed to be crack-resistant. They can be used to store all types of food and drinks. Circular marks on the glass surface are a normal phenomenon and can usually be wiped clean with a damp cloth.	
<b>9 Beverage Station (optional)</b>	Can be used to store the frequently used items, such as canned beverages and snacks and allows access to these items without opening the refrigerator door.	
<b>10 Egg Container</b>	Best place to keep eggs. Place the EGG TRAY on the shelf for easy access.	
<b>11 Coolselect Zone™ (Optional)</b>	Helps to preserve the taste, and prolong the freshness of your food. Use it to store cheese, meat, poultry, fish or any other foods that are consumed on a regular basis.	
<b>12 Door Bins</b>	Designed to handle large, bulky items such as gallons of milk or other large bottles and containers.	
<b>13 Fruit &amp; Vegetable Drawer</b>	Used to preserve the freshness of your stored vegetables and fruits. It has been specifically designed to control the level of humidity within the drawer.	

 Bottles should be stored tightly together so that they do not tip and fall out when the refrigerator door is opened.

-  **WARNING**
- If you plan to go away for a significant time, empty the refrigerator and turn it off. Wipe the excess moisture from the inside of the appliance and leave the doors open. This helps keep odor and mold from developing.
  - If the refrigerator is not to be used for a long period of time, pull out the power plug.
    - Deterioration in the power cord insulation may cause fire.

## USING THE COOLSELECT ZONE™ DRAWER (OPTIONAL)

The CoolSelect Zone™ Drawer is designed to make your busy life just a little bit easier.

### Soft Freeze

When “Soft Freeze” is selected on the CoolSelect Zone™ Drawer, the temperature on the drawer digital panel displays -5°C, regardless of the overall temperature setting of the refrigerator. This feature helps keep meat and fish fresh for longer.

### Chill

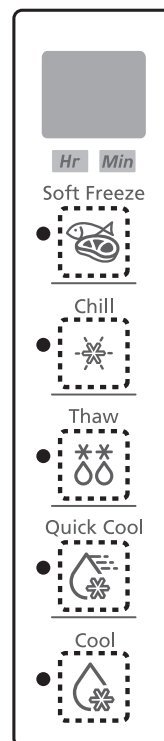
When “Chill” is selected, the temperature of the CoolSelect Zone™ Drawer is kept at -1°C, regardless of the overall temperature setting of the refrigerator. This feature also helps keep meat or fish fresh for longer.

### Thaw

When “Thaw” is selected, warm and cold air is alternately blown into the CoolSelect Zone™ Drawer. Depending on the weight of the frozen food, you can select a 4 hrs, 6 hrs, 10 hrs, and 12 hrs thawing time.

When “Thaw” ends, food is in a half-frozen state, making it easy to cut for cooking. In addition, when “Thaw” ends, the CoolSelect Zone™ Drawer returns to the original “Chill” condition. To cancel this function mid-cycle, just press any button besides **Thaw**.

Here are the approximate thawing times of meat and fish by weight (and based on a 25.4mm (1in.) thickness). This chart represents the total weight of food in the CoolSelect Zone™ Drawer.



THAW TIME	4hours	6hours	10hours	12hours
WEIGHT	363g (0.8lb)	590g (1.3lb)	771g (1.7lb)	1000g (2.2lb)


### Quick Cool


You can use the “Quick Cool” operation with the CoolSelect Zone™ Drawer to quickly cool 1~3 canned beverages in about an hour. When the “Quick Cool” process ends, the CoolSelect Zone™ Drawer automatically returns to the previously set temperature.

To cancel this operation, press the Quick Cool button again and the CoolSelect Zone™ Drawer returns to the previously set temperature.

### Cool

When “Cool” is selected, the temperature in the CoolSelect Zone™ Drawer will be the same as the overall temperature setting of the refrigerator. The drawer digital panel shows the same temperature as that of the refrigerator display panel. Since the “Cool” function mimics the refrigerator temperature, you have extra general storage space.

 Depending on the size and thickness of the meat or fish, thawing times may vary.

 When “Thaw” is in operation, any items that you do not want affected should be moved out of the drawer.

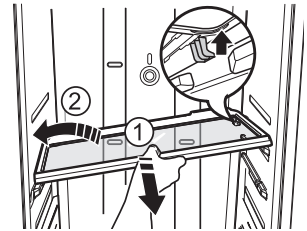
# operating the SAMSUNG side-by-side refrigerator

## REMOVING THE FREEZER/FRIDGE ACCESSORIES

Cleaning and rearranging the interior of the freezer is a snap.

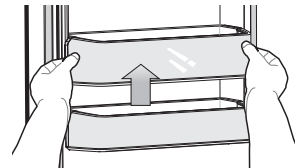
### 1. Shelves (Freezer/Fridge)

Remove the shelf by pulling the shelf out to the hole point as shown at the right figure. And then remove it by turning and lifting it up.



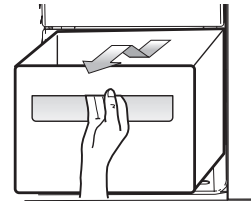
### 2. DOOR BIN

Remove the Door Bin by holding the door bin with both hands and then gently lift it up.



### 3. DRAWER

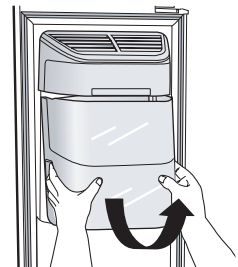
Remove the Drawer by pulling it out and slightly lifting it up.



### 4. Ice Bucket (Freezer)

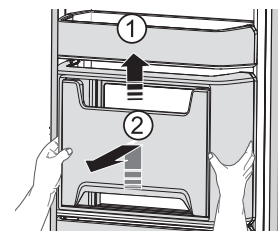
Remove the Icemaker Bucket by lifting up and pulling it out slowly.



- Grip the handle as shown in the figure
- Lift the low part slightly
- Take the ice bucket out slowly



### 5. Beverage Station (Fridge) (optional)

- Lift up the upper bin at the top of the fridge and pull it out.
- After pressing the cover wrapped with both hands, remove the beverage station cover by pulling toward up.



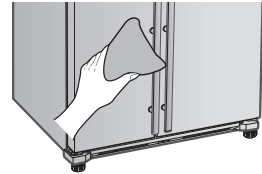
-  Do not use excessive force when removing the cover. Otherwise, the cover may break and cause injury.
-  Before removing any accessories, make sure that no food is in the way. When possible, remove the food altogether to reduce the risk of accidents.

## CLEANING THE REFRIGERATOR

Caring for your Samsung Side-By-Side Refrigerator prolongs the life of your appliance and helps keep it odor and germ-free.

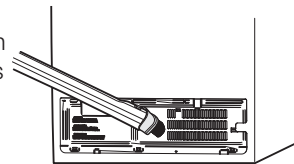
### Cleaning the Interior

Clean the inside walls and accessories with a mild detergent and then wipe dry with a soft cloth. You can remove the drawers and shelves for a more thorough cleaning. Just make sure to dry them before putting them back into place.



### Cleaning the Exterior

Wipe the digital panel and display panel with a clean, soft cloth. Spray water onto the cleaning cloth instead of spraying directly on the surface of the refrigerator. This helps ensure an even distribution of moisture to the surface. The doors, handles and cabinet surfaces should be cleaned with a mild detergent and then wiped dry with a soft cloth. To keep your appliance looking its best, the exterior should be polished once or twice a year.



Do not use Benzene, Thinner or Clorox™ for cleaning.

They may damage the surface of the appliance and can create a risk of fire.

### Cleaning the Beverage Station

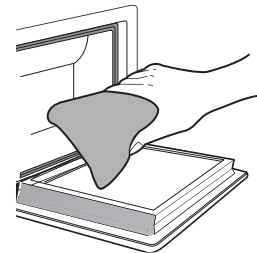
Use a damp cloth to clean the Beverage Station.

Then wipe dry with a soft cloth



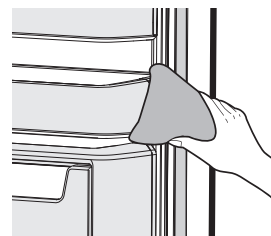
Use the soft touch type Beverage Station as follow

- In the case of opening the Home Bar, it will be opened automatically when you push the upper position of Home Bar until rattling.
- In the case of closing the Home Bar, push the upper position of Home Bar until rattling.



### Cleaning the Rubber door seals

If the rubber door seals are dirty the doors may not close properly, and the refrigerator will not operate efficiently. Keep the door seals free of grit or grime by cleaning the doors with a mild detergent and damp cloth. Wipe dry with a clean, soft cloth.



Do not spray the refrigerator with water while it is plugged in, as it may cause an electric shock. Do not clean the refrigerator with benzene, thinner or car detergent for risk of fire.

# operating the SAMSUNG side-by-side refrigerator

## CHANGING THE INTERIOR LIGHTS



**WARNING**

Pull the power plug out of the socket before changing the interior light of the refrigerator.  
- Otherwise, there is a risk of electric shock.  
If you experience difficulty when changing the light, contact your service center.



### Changing the LED Type Lighting



**CAUTION**

Do not disassemble or replace the LED type Lighting.

To change the LED Type Lighting contact Samsung service center or your authorized Samsung dealer.

## CHANGING THE WATER FILTER

The “Filter Indicator” light lets you know when it is time to change your water filter cartridge. To give you preparation time to get a new filter, the red light will come on just before the capacity of the current filter runs out. Changing the filter on time provides you with the freshest, cleanest water from your fridge.

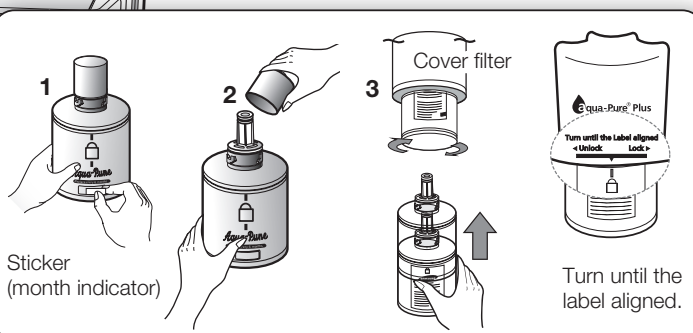
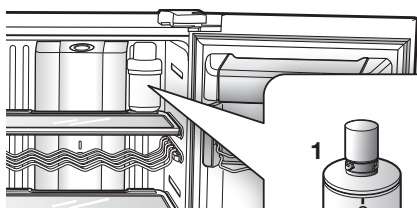


1. Remove the water filter from the box and put a month indicator sticker on the filter as shown.

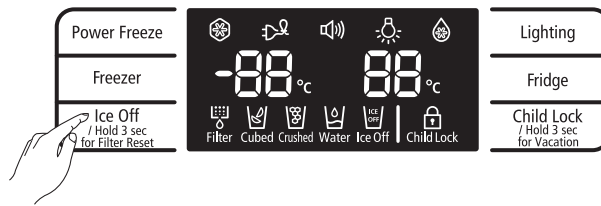
Place a sticker on the filter that dates six months in the future. For example, if you are replacing the water filter in March, put the “SEP” (September) sticker on the filter to remind you to replace in September. Normal filter life is about every 6 months.

2. Remove the new filter’s protective cap and remove the old filter.
3. Position and insert the new filter into the filter housing.

Slowly turn the water filter clockwise to align with the printing mark on the cover, locking the filter in position. Make sure to align the water filter label mark with the center of cover filter printing as illustrated. Remember, do not over-tighten.



- Once you have completed this process, hold the Ice Off button simultaneously for 3 seconds to reset the filter schedule.



- Lastly, run about 3L of water through water dispenser and throw away. Make sure that water flows clearly again before drinking.
- See installing the water filter instructions page 17.



A newly installed water filter cartridge may cause water to briefly spurt from the water dispenser. This is due to air getting into the line. It should pose no problem to operation.

### Ordering replacement filters

To order more water filter cartridges, contact your authorized Samsung dealer.

## USING THE DOORS

The refrigerator doors are equipped with a door opening and closing feature that ensures that the doors close all the way and are securely sealed.

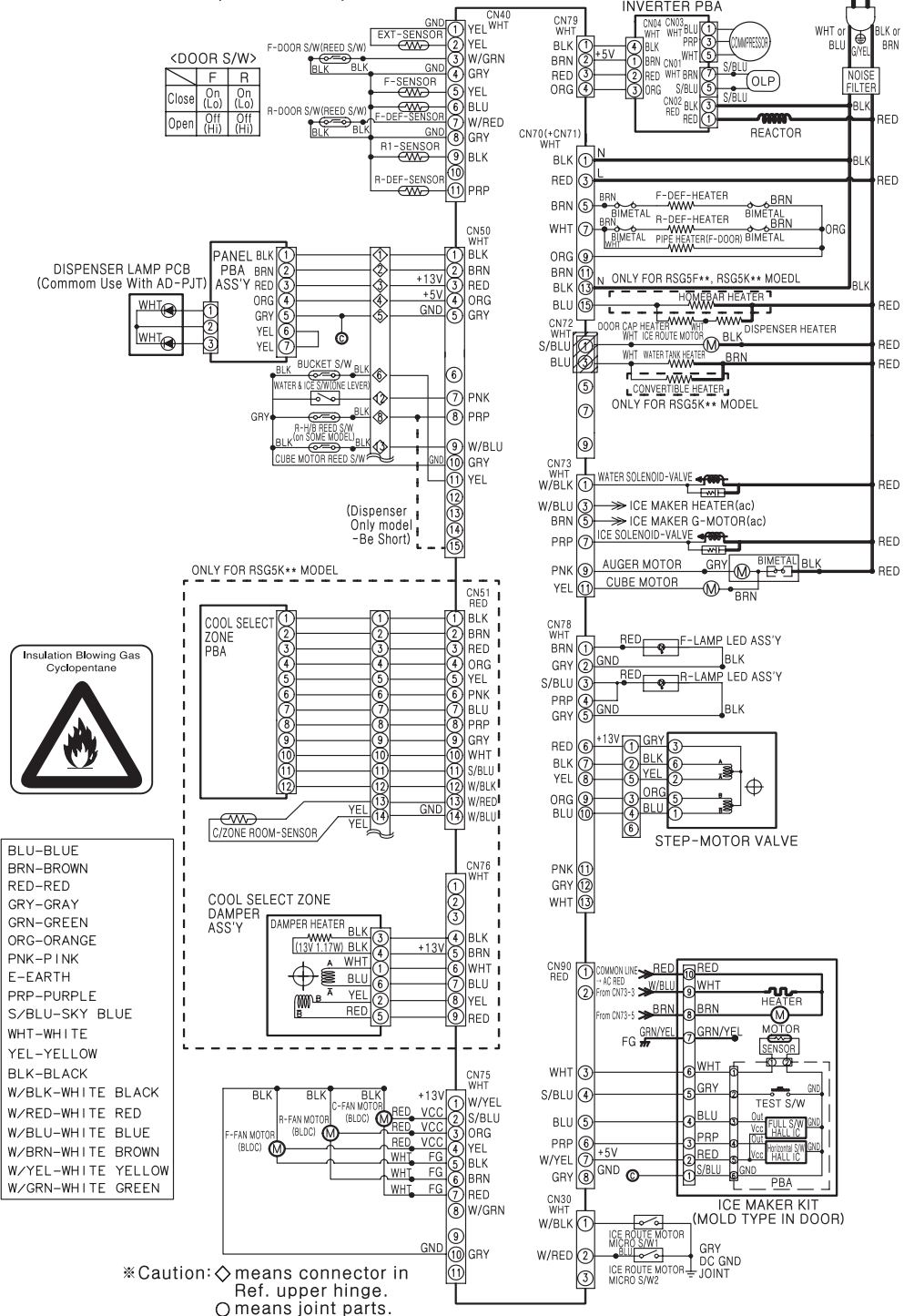
After opening beyond a certain point, the door will “catch” and remain open. When the door is ajar ahead of the catch that allows it to stay open, it will close automatically.

# troubleshooting

PROBLEM	SOLUTION
The refrigerator does not work at all or it does not chill sufficiently.	<ul style="list-style-type: none"> <li>• Check that the power plug is properly connected.</li> <li>• Is the temperature control on the display panel set to the correct temperature? Try setting it to a lower temperature.</li> <li>• Is the refrigerator in direct sunlight or located too near a heat source?</li> <li>• Is the back of the refrigerator too close to the wall and therefore keeping air from circulating?</li> </ul>
The food in the fridge is frozen.	<ul style="list-style-type: none"> <li>• Is the temperature control on the display panel set to the correct temperature? Try setting it to a warmer temperature.</li> <li>• Is the temperature in the room very low?</li> <li>• Did you store the food with a high water content in the coldest part of the fridge? Try moving those items into the body of the fridge instead of keeping them in the CoolSelect Zone™ drawer.</li> </ul>
You hear unusual noises or sounds.	<ul style="list-style-type: none"> <li>• Check that the refrigerator is level and stable.</li> <li>• Is the back of the refrigerator too close to the wall and therefore keeping air from circulating?</li> <li>• Was anything dropped behind or under the refrigerator?</li> <li>• A “ticking” sound is heard from inside the refrigerator. This is normal and occurs because various accessories are contracting or expanding in relation to the temperature of the refrigerator interior.</li> </ul>
The front corners of the appliance are hot and condensation is occurring.	<ul style="list-style-type: none"> <li>• Some heat is normal as anti-condensators are installed in the front corners of the refrigerator to prevent condensation.</li> <li>• Is the refrigerator door ajar? Condensation can occur when you leave the door open for a long time.</li> </ul>
Ice is not dispensing.	<ul style="list-style-type: none"> <li>• Did you wait for 12 hours after installation of the water supply line before making ice?</li> <li>• Is the water line connected and the shut-off valve open?</li> <li>• Did you manually stop the ice making function? Make sure Ice Type is set to Cubed or Crushed.</li> <li>• Is there any ice blocked within the ice maker bucket?</li> <li>• Is the freezer temperature too warm? Try setting the freezer temperature lower.</li> </ul>
You can hear water bubbling in the refrigerator.	<ul style="list-style-type: none"> <li>• This is normal. The bubbling comes from the refrigerant coolant liquid circulating through the refrigerator.</li> </ul>
There is a bad smell in the refrigerator.	<ul style="list-style-type: none"> <li>• Has a food item spoiled?</li> <li>• Make sure that strong smelling food (for example, fish) is wrapped so that it is airtight.</li> <li>• Clean out your freezer periodically and throw away any spoiled or suspect food.</li> </ul>
Frost forms on the walls of the freezer.	<ul style="list-style-type: none"> <li>• Is the air vent blocked? Remove any obstructions so air can circulate freely.</li> <li>• Allow sufficient space between the foods stored for efficient air circulation.</li> <li>• Is the freezer door closed properly?</li> </ul>
Water dispenser is not functioning.	<ul style="list-style-type: none"> <li>• Is the water line connected and the shut-off valve open?</li> <li>• Has the water supply line tubing been crushed or kinked? Make sure the tubing is free and clear of any obstruction.</li> <li>• Is the water tank frozen because the refrigerator temperature is too low? Try selecting a warmer setting on the main display panel.</li> </ul>

# circuit diagram

## MODEL: RSG5D\*\*, RSG5F\*\*, RSG5K\*\*





memo

---

memo

---

memo

---

## English



### **Correct Disposal of This Product (Waste Electrical & Electronic Equipment) (Applicable in the European Union and other European countries with separate collection systems)**

This marking shown on the product or its literature, indicates that it should not be disposed with other household wastes at the end of its working life. To prevent possible harm to the environment or human health from uncontrolled waste disposal, please separate this from other types of wastes and recycle it responsibly to promote the sustainable reuse of material resources.

Household users should contact either the retailer where they purchased this product, or their local government office, for details of where and how they can take this item for environmentally safe recycling.

Business users should contact their supplier and check the terms and conditions of the purchase contract. This product should not be mixed with other commercial wastes for disposal.



### Contact SAMSUNG WORLD WIDE

If you have any questions or comments relating to Samsung products, please contact the SAMSUNG customer care center.

COUNTRY	CALL	Web site
AUSTRALIA	1300 362 603	<a href="http://www.samsung.com/au">www.samsung.com/au</a>
COLOMBIA	01-8000112112	<a href="http://www.samsung.com.co">www.samsung.com.co</a>
EIRE	0818 717 100	<a href="http://www.samsung.com/ie">www.samsung.com/ie</a>
HONG KONG	3698-4698	<a href="http://www.samsung.com/hk">www.samsung.com/hk</a>
INDIA	3030 8282 , 1800 110011 , 1-800-3000-8282	<a href="http://www.samsung.com/in">www.samsung.com/in</a>
MALAYSIA	1800-88-9999	<a href="http://www.samsung.com/my">www.samsung.com/my</a>
NEW ZEALAND	0800 SAMSUNG (0800 726 786)	<a href="http://www.samsung.com/nz">www.samsung.com/nz</a>
PANAMA	800-7267	<a href="http://www.samsung.com/latin">www.samsung.com/latin</a>
PHILIPPINES	1800-10-SAMSUNG(726-7864)	<a href="http://www.samsung.com/ph">www.samsung.com/ph</a>
SINGAPORE	1800-SAMSUNG(726-7864)	<a href="http://www.samsung.com/sg">www.samsung.com/sg</a>
SOUTH AFRICA	0860-SAMSUNG(726-7864)	<a href="http://www.samsung.com/za">www.samsung.com/za</a>
U.K	0845 SAMSUNG (7267864)	<a href="http://www.samsung.com/uk">www.samsung.com/uk</a>
VIETNAM	1 800 588 889	<a href="http://www.samsung.com/vn">www.samsung.com/vn</a>



In an effort to promote recycling this user manual is printed on recycled paper.