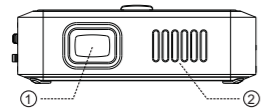


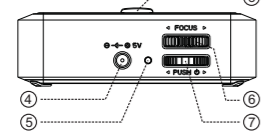
OVERVIEW

FRONT VIEW



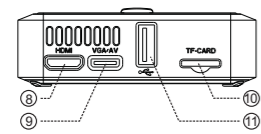
1. Projection Lens
2. Cooling Holes
3. IR Sensor

LEFT VIEW



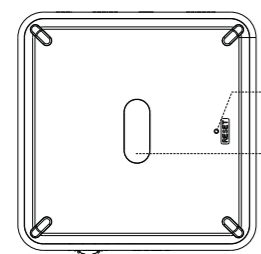
4. Power Supply Receptacle
5. LED Indicator
6. Focus

RIGHT VIEW



7. Wheel Key
- ▷ Upper wheel key
Select loop/ Volume +
- ◁ Down wheel key
Return/ Volume -
- ⊞ Middle wheel key
Short press: Confirm
Long press: Turn off

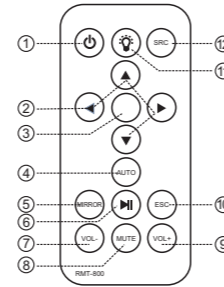
BUTTON VIEW



8. HDMI Input
9. VGA Input/AV Input
10. TF Card Slot
11. USB Input
12. Reset
13. Magnet

5

REMOTE CONTROL FUNCTIONS



1. Power On /Off
2. Up/Down/Left/Right
3. Ok
4. AUTO (detect the external input signal again)
5. Rotation/Mirror
6. Play/Pause
7. Volume Down
8. Mute
9. Volume Up
10. Return to upper menu
11. Brightness(Circular select brightness mode)
12. Return to main menu directly

6

OPERATION

STARTUP AND SHUTDOWN

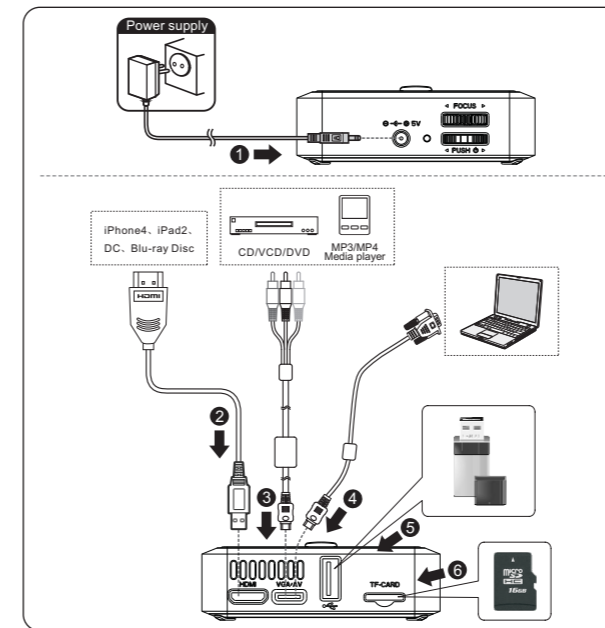
STARTUP - Connect the external power supply to DC jack on projector, see connection 1, press Power key on remote control or long press the middle wheel key on the projector to turn on the device.

SHUT DOWN - when the projector is ON, press Power key on remote control and long press the middle wheel key to turn off the device.

FOCUS ADJUSTMENT

The focus can be adjusted by turning the wheel located at the front of the projector.

CONNECTION DIAGRAM



7

BATTERY CHARGING

This device is with built-in lithium battery, indication light is red when charging, indication light becomes green when battery is full. In case the indication light is abnormal, it indicate the battery is in unusual condition or damaged, please stop using the device to prevent from the danger, and contact with the service center for maintenance.

AV INPUT

Connect with AV cable, please see 3, connect the projector with any device with AV output. Press "◀/▶" on remote control or the wheel key "▷" on projector, then you can project the video from external source by press "OK" key on remote control or middle wheel key on the projector.



(FIGURE 1)

HDMI INPUT

Connect with HDMI cable, please see 2, plug the HDMI cable into the mini HDMI jack on the projector, the other side into the HDMI device. Press "◀/▶" on remote control or the wheel key "▷" on projector, select "HDMI input" then you can project the video from external source by press "OK" key on remote control or middle wheel key on the projector.



(FIGURE 2)

VGA INPUT

When using VGA input terminal to connect to the video output of other device, the projector project the video out. Connect VGA cable, please see connection 4, plug mini VGA terminal to the VGA jack on projector, the other side to the VGA device. Press "◀/▶" on remote control or the wheel key "▷" on projector, select "VGA Input", then you can project the video from external source by press "OK" key on remote control or middle wheel key on the projector.



(FIGURE 3)

8

Lumex

USER MANUAL

PORTABLE PROJECTOR MX-60

WARNINGS



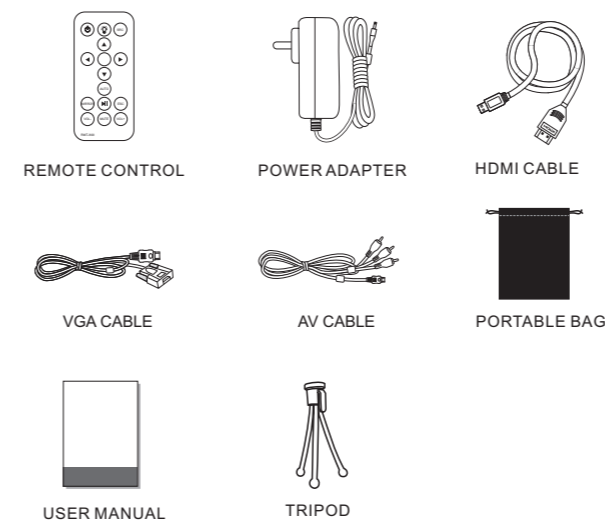
Caution: To prevent electric shock, match the wide blade on the power cord plug to the wide slot on an electric outlet. If the plug does not fit, consult a licensed electrician to replace the obsolete outlet. Do not modify the power cord plug, or you will defeat this safety feature.

Important Safety Instructions

1. Read these instructions.
2. Keep these instructions.
3. Heed all warnings.
4. Follow all instructions.
5. Do not use this apparatus near water.
6. Clean only with dry cloth.
7. Do not block any ventilation openings. Install in accordance with the manufacture's instructions.
8. Do not install near any heat sources such as radiators, heat registers, stoves, or other apparatus (including amplifiers) that produce heat.
9. Protect the power cord from being walked on or pinched particularly at plugs, convenience receptacles, and the point where they exit from the apparatus.
10. Only use attachments/accessories specified by the manufacturer.
11. Unplug this apparatus during lightning storms or when unused for long periods of time.
12. Refer all servicing to qualified service personnel. Servicing is required when the apparatus has been damaged in any way, such as power-supply cord or plug is damaged, liquid has been spilled or objects have fallen into the apparatus, the apparatus has been exposed to rain or moisture, does not operate normally, or has been dropped.
13. The apparatus shall not be exposed to dripping or splashing and that no objects filled with liquids, such as vases, shall be placed on the apparatus.
14. The mains plug or an appliance coupler is used as disconnect device, the disconnect device shall remain readily operable.
15. Do not use this apparatus in the box or in the cabinet, it should be placed on a ventilation area.
16. Warning: To reduce the risk of electric shock, do not remove the cover or back, do not expose this apparatus to rain or moisture. There are no user-serviceable parts inside. Refer servicing to qualified service personnel.

2

ACCESSORIES



3

For warranty information and registration, please log onto www.shoppjector.com.

MULTIMEDIA PLAYER

Player supports the following formats:

Picture format: JPEG, BMP, PNG

Audio format: WMA, MP3

Video format: MPEG, H.264, MJPEG, MOV, AVI, RMVB, RM, MKV, MP4

Text format: TXT

Photo, Audio, Video and Text file can be accessed via TF card and USB. Turn on the projector, go into the default main interface, please see as below:



(FIGURE 4)

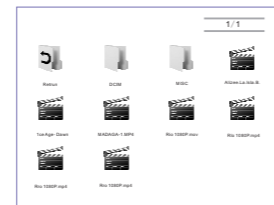
Insert the USB and TF card into the projector (see connection on page 7 at 5 6), press "◀/▶" key or "▷" wheel key to select to enter into menu of USB and TF card. Then press "OK" key on remote control or middle wheel key on the projector to enter into next menu.



(FIGURE 5)

Choose video, music, photo, text in the same way to start playing video, music, photo, text and so on, the operation is almost the same. Take browsing photo as example:

First select menu "PHOTO" and press "OK" key on remote control or middle wheel key on the projector to enter into next menu.

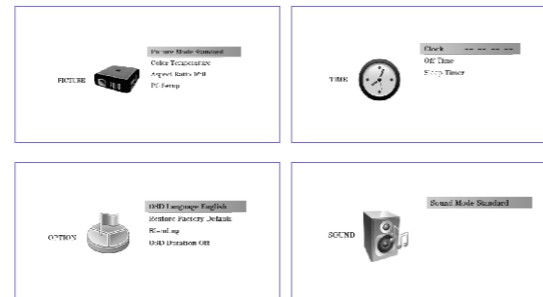


(FIGURE 6)

Select "PHOTO", press "OK" key on remote control or the wheel key on projector, the files on USB and TF card will be shown. See picture 6, select the photos you want to browse, and press "PLAY" key on remote control or the middle wheel key on projector to start the browse. Under projector mode, you can control the setup menu by press "OK" key on remote control or the middle wheel key on projector. Control menu include the functions as below, Play/Pause, Preview, Next, Stop & Exit, Repeat, background music On/Off, Play list, Information of current photo play, Clockwise rotate, Counterclockwise rotate, Zoom out, Zoom in, Move.

MENU SETTINGS

In any mode, press "SETUP" key to return to main menu. Press "◀/▶" on remote control or "▷" on wheel key of projector, select and enter in "SETUP" menu, you can set up the video, sound, time, setup, specific setup is as below.



SPECIFICATIONS

PROJECTION SYSTEM

Resolution: VGA (640x480)
 Brightness: 60 ANSI-Lumens
 Contrast Ratio: 1000:1
 Aspect ratio: 4:3
 Noise: <28 dBA
 Projection Size: Available Size 25 ~ 90 inch
 Projection Lens: Manual Focus
 Lamp: 30,000 Hours
 Projection Angle: 33.6°

GENERAL SPECS

Audio/Video Input: Stereo Audio
 Composite Video (CVBS)
 Audio Output: built-in 1 x 1W speaker
 VGA: PC VGA
 USB: Standard 4 Pin USB
 HDMI: Type C
 SD/MMC Card: SDHC
 Power Adaptor: Input: AC100 - 240V, 50Hz/60Hz
 Output: 5V--- 2A
 8 Watts
 Power Consumption: Lithium battery 2000mAh/3.7V
 Battery: 0°C - 40°C
 Operating temperature: 25% - 88%
 Operating humidity: English, Spanish, Portuguese, French, Deutsch, Italian
 Supported Languages: 150g
 Weight: 75*75*22mm(LxWxH)
 Dimensions:

MAINTENANCE

The Projector needs proper maintenance.

Lens Cleaning - You should keep the lens clean and free of dirt and debris by using a soft lint-free cloth.

General Cleaning - To clean the projector, first unplug the projector and wipe the projector with a soft lint-free cloth. Slightly moisten cloth as needed. Do not use alcohol, benzene, or other cleaning detergents as this may cause discoloration or warping of the case.

Lamp Replacement - The projector use a 20,000 hour LED lamp that does not need replacement. Do not attempt to replace the LED lamp.

Opening the Projector - There are no serviceable parts in the projector. Do not attempt to open.

Remote Control Battery Replacement - The Remote control uses a CR2025 battery. Please use only CR2025 type batteries for replacement.

TROUBLESHOOTING

THE PROJECTOR DOES NOT TURN ON

Possible Causes	Solution
On power	Check to ensure the power plug or battery source is good. Check the power adapter to ensure a proper connection with the wall outlet as well as the projector.
Over heating	Wait until the projector has fully cooled to restart.

IMAGE IS BLURRED

Possible Causes	Solution
The Projector is not in focus	Adjust the focus with the focus adjustment dial until the image comes into focus.
Lens protective film is not removed	Please tear off the protective film.
The lens is dirty	With a soft, lint-free cloth to wipe the projector lens.

REMOTE CONTROL DOES NOT WORK

Possible Causes	Solution
The remote control is dead	Replace the battery with comparable CR2025 battery

TF CARD IS NOT RECOGNIZED

Possible Causes	Solution
TF Card is not inserted properly	Re-insert TF Card
TF Card is damaged	Replace TF Card

USB DOES NOT RECOGNIZE

Possible Causes	Solution
USB is not inserted properly	Re-insert Removable Disk
USB is damaged	Replace Removable Disk

VGA PORT DOES NOT WORK

Possible Causes	Solution
VGA cable is not connected properly	Reconnect VGA cable to ensure proper connection
Laptop does not switch to external VGA mode	Switch laptop to external VGA mode
PC VGA output mode is not in range of specification of the projector	See page 15: The projector supports common formats

HDMI PORT DOES NOT WORK

Possible Causes	Solution
HDMI cable is not connected properly	Reconnect HDMI cable to ensure proper connection
Laptop does not switch to external VGA mode	Switch laptop to external VGA mode
HDMI output mode is not in range of specification of the projector	See page 15: The projector supports common formats table

AV PORT DOES NOT WORK

Possible Causes	Solution
AV cable is not connected properly	Reconnect AV cable to ensure the correct connection.
External video device, has not display	Ensure external video device has output.

THE BATTERY CAN NOT BE CHARGED

Possible Causes	Solution
the battery is damaged	Please contact with service center for maintenance (do not unpack in person).
the battery is over-heat	Please turn off the device and then re-charge when cool down.

THE PROJECTOR SUPPORTS COMMON FORMATS

Source	Signal	Refresh rate (HZ)	Resolution	
Composite video	NTSC	60	720*480	
	PAL	50	720*576	
Analog RGB (VGA)	VGA	60/66/72/75	640*480	
	SVGA	56/60/72/75	800*600	
	SXVGA	XVGA	60/70/75	1024*768
			60/70/75	1152*864
			60/75	1280*960
	WXVGA		60/72/75	1280*1024
		60/75	1280*768	
		60	1360*768	
		60/75	1280*800	
HDMI	SDTV(480i)	60	720*480	
	SDTV(576i)	50	720*576	
	SDTV(480P)	60	720*480	
	SDTV(576P)	50	720*576	
	HDTV(720P)	50/60	1280*720	
	HDTV(1080i)	50/60	1920*1080	
	HDTV(1080P)	50/60	1920*1080	



Description: DLP, DLP logo and DLP badge is a trademark of Texas Instruments Incorporated.

※ Tip: product pictures, information may be nuances and physical, if it updated without notice.