

# Dazzle\*™

## 6 In 1 Reader

---

**USER'S  
MANUAL**



**Dazzle\***

## CONTENTS

---

Getting Started — 

Connecting to a Macintosh — 

Connecting to a PC Compatible — 

How to Use the Dazzle 6 In 1 Reader — 

Dazzle OnDVD Software for  
PC compatible computers — 

Troubleshooting Your Dazzle 6 In 1  
Reader — 

Obtaining Technical Support — 

How-to Contact Us — 

# USER'S MANUAL

# 1 GETTING STARTED

Introduction — 

What's Included with the  
Dazzle 6 In 1 Reader — 

System Requirements — 

Parts of the Dazzle 6 In 1 Reader — 

Registering Your Dazzle 6 In 1 Reader — 

**Dazzle\***

# USER'S MANUAL

## Introduction

Thank you for purchasing the Dazzle 6 In 1 Reader™.

The Dazzle 6 In 1 Reader is a USB card reader/writer compatible with CompactFlash™, IBM Microdrive™, SmartMedia™, Secure Digital™ / MultiMediaCard™, and Memory Stick™ for new Apple iMac™, iBook™, G3/G4, and PC compatible owners. The Dazzle 6 In 1 Reader is easy to use and provides transfer rates of up to 1.5MB/sec. With the Dazzle 6 In 1 Reader, audio and video files, cell phone databases, and more can now be shared easily between your digital devices (cameras, cell phones, MP3 players, etc. and your computer). Simply remove the digital media from your digital device and insert it into the 6 In 1 (connected to your PC or Mac) to transfer or view your digital data.

## What's Included with the Dazzle 6 In 1 Reader

The Dazzle 6 In 1 Reader includes the following package contents:

- Dazzle 6 In 1 Reader
- Dazzle Installation CD (includes this User's Manual, driver software, and free OnDVD software for use with PC compatible computers).
- Quick-Start Guide (located on inside of insert card)
- Registration Card
- Warranty Certificate

## System Requirements

### PC Compatible:

- Desktop or laptop PC Compatible with an available USB port
- 200MHz or faster processor
- Windows® 98SE, 2000, Me, or XP
- CD-ROM Drive (for driver software and bonus software installation)
- 1MB free disk space (32MB of disk space required for installation of OnDVD software)

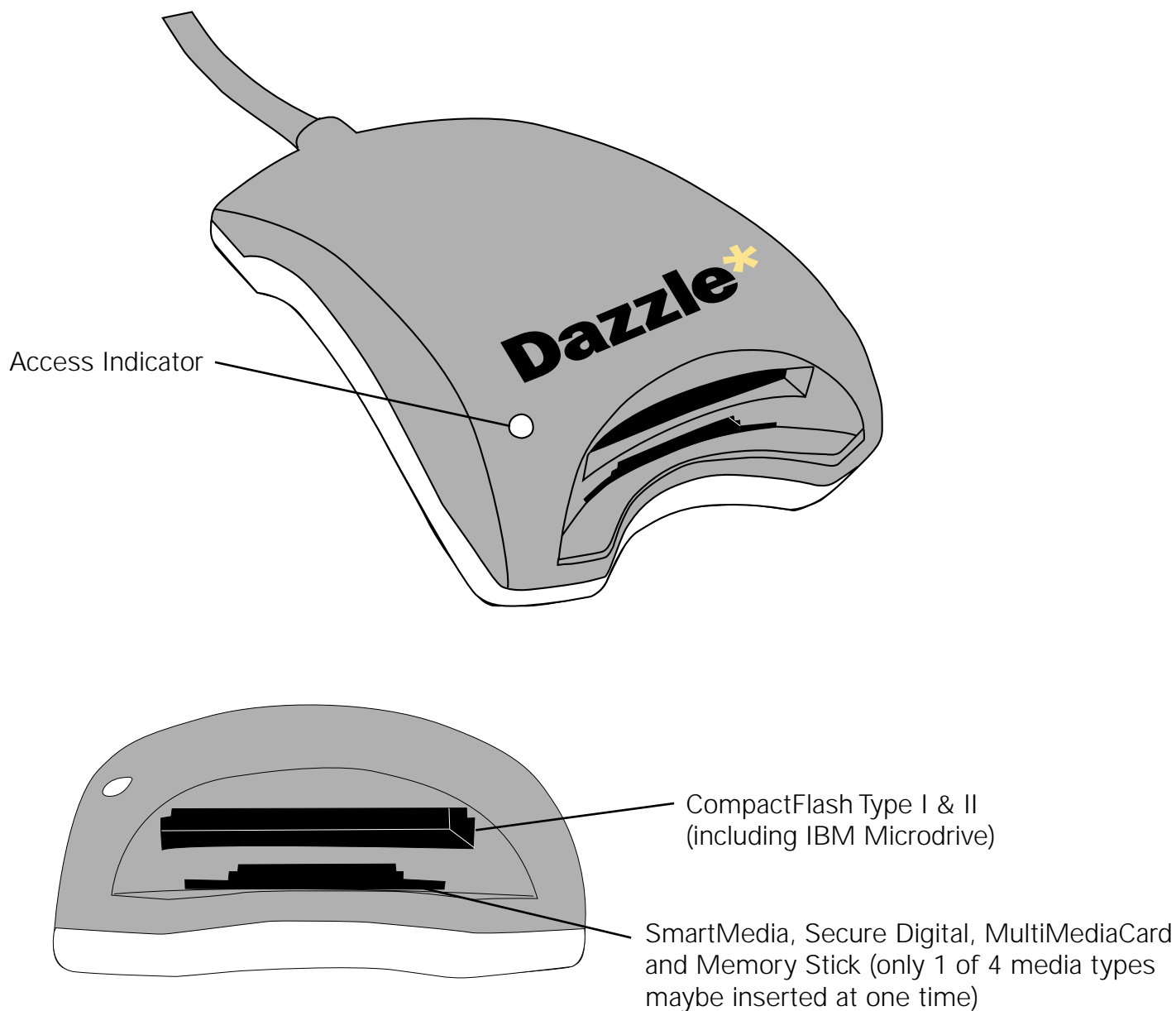
### Macintosh:

- G3 processor or faster (iMac, iBook, PowerBook, PowerMac G3 and G4)
- Available USB port
- Mac OS 9.x
- CD-ROM Drive (for software installation)
- 1MB free disk space

**Dazzle** 

# USER'S MANUAL

## Parts of the Dazzle 6 In 1 Reader



**Dazzle\***

# USER'S MANUAL

## Registering Your Dazzle 6 In 1 Reader

Thank you again for purchasing the Dazzle 6 In 1 Reader. In order for us to better serve you, we encourage you to register your card reader as soon as possible. There are several benefits to registering your card reader:

- 1.** Registering your Dazzle 6 In 1 Reader entitles you to free periodic driver software updates when available.
- 2.** Registering your Dazzle 6 In 1 Reader entitles you to technical support from Dazzle.

**There are three options for you to register the Dazzle 6 In 1 Reader:**





- 1.** Register online at <http://www.Dazzle.com/support/prodreg.html> for instant registration.
- 2.** Complete and mail the included Registration Card.
- 3.** Complete and fax the included Registration Card to Customer Service at 800-483-5106.

# CONNECTING

---

## to a Macintosh



- Installation Overview — 
- Installing the Driver Software — 
- Connecting to the USB Port — 
- Connecting to a USB Hub — 

# USER'S MANUAL

## Installation Overview

The Dazzle 6 In 1 Reader is relatively easy to install and operate. To avoid complications during the installation process, please follow the steps in order as described in this chapter. Before connecting and using the card reader, you must first install the driver software located on the accompanying Dazzle Installation CD-ROM.

## Installing the Driver Software

### Driver Software Installation on Mac OS 9.x

1. Start your Macintosh computer running Mac OS 9.x and close all open applications.
2. Insert the Dazzle Installation CD-ROM.
3. Double-click on the "6-In-1 Reader Drivers" Installer Icon.



6-in-1 Reader Drivers

4. A splash screen will appear. Click "**Continue**."

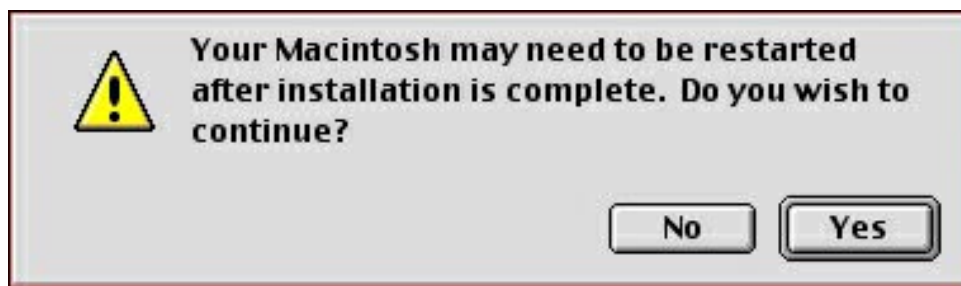




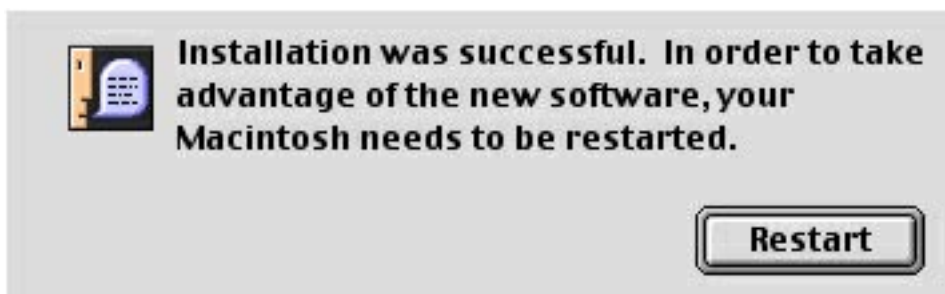
# USER'S MANUAL

5. A dialog box (similar to the illustration below) will appear advising that you may have to restart your computer after installing the software, click "**Yes**" to continue. Your Macintosh will then begin performing the installation and a status bar will appear displaying the progress of the installation.

**NOTE:** The actual driver installation should take only a few seconds.



6. A final dialog box will appear advising that the software was successfully installed. Click "**Restart**."



Congratulations! Driver installation is now complete. You may now connect the Dazzle 6 In 1 Reader to your computer after restarting. Proceed to the next page for instructions on connecting the Dazzle 6 In 1 Reader.

# USER'S MANUAL

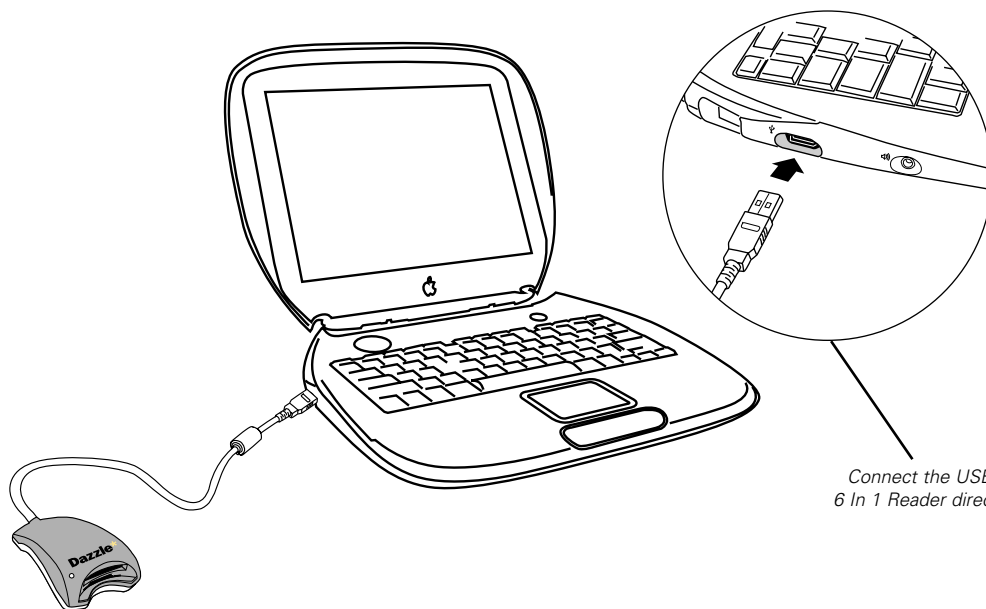
## Connecting to the USB Port

- 1. Connect the USB connector of the Dazzle 6 In 1 Reader to the USB port of your Macintosh computer.**

**NOTE:** The USB cable may be connected to the computer while the computer is running

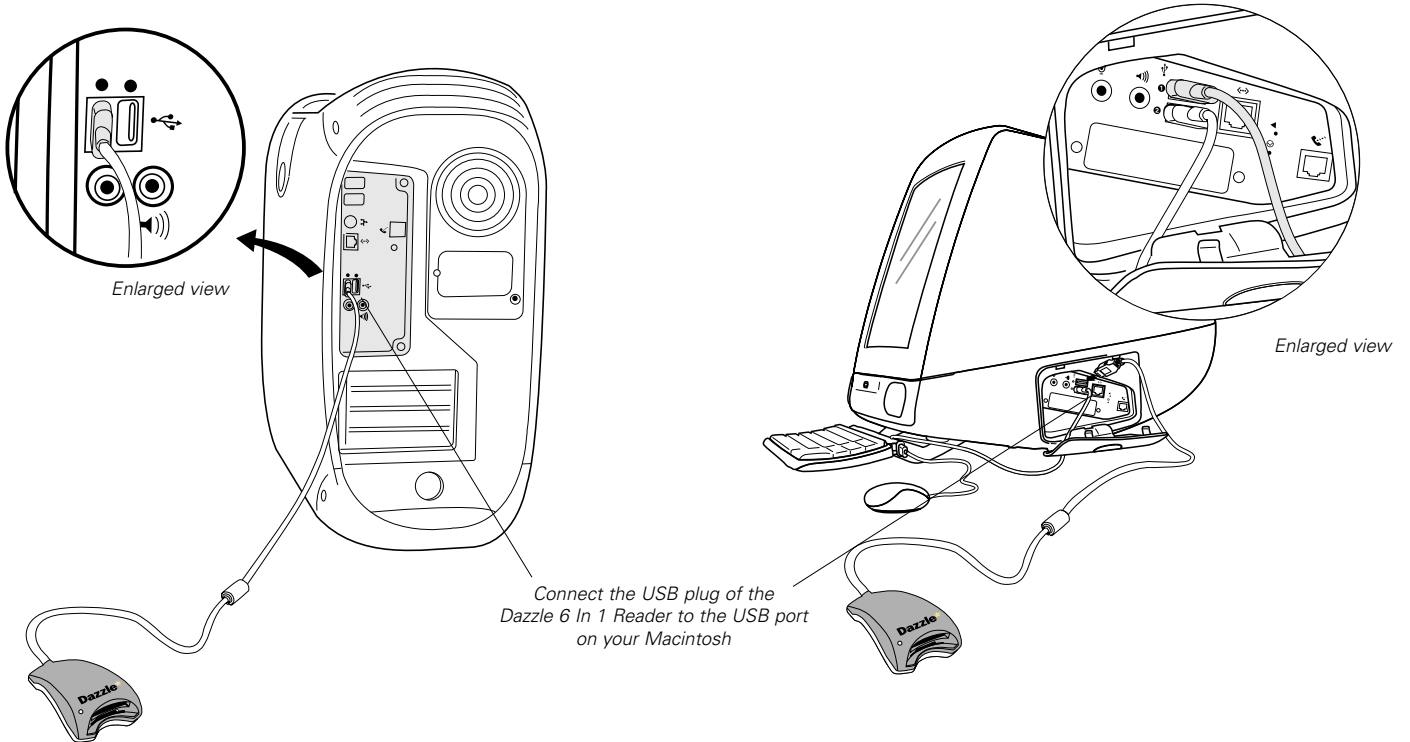
- 2. Make sure the cable ends are firmly connected.** Be careful not to confuse the upper and lower parts of the connector. Do not force connections, as this may damage the computer or the card reader.

*In the illustrations below and on the next page, the Dazzle 6 In 1 Reader connects directly to the USB port on your Macintosh. Your Dazzle card reader can also be connected to a USB hub - see page 12 for more information.*



*Connect the USB plug of the Dazzle 6 In 1 Reader directly to the USB port on your Macintosh.*

# USER'S MANUAL



# USER'S MANUAL

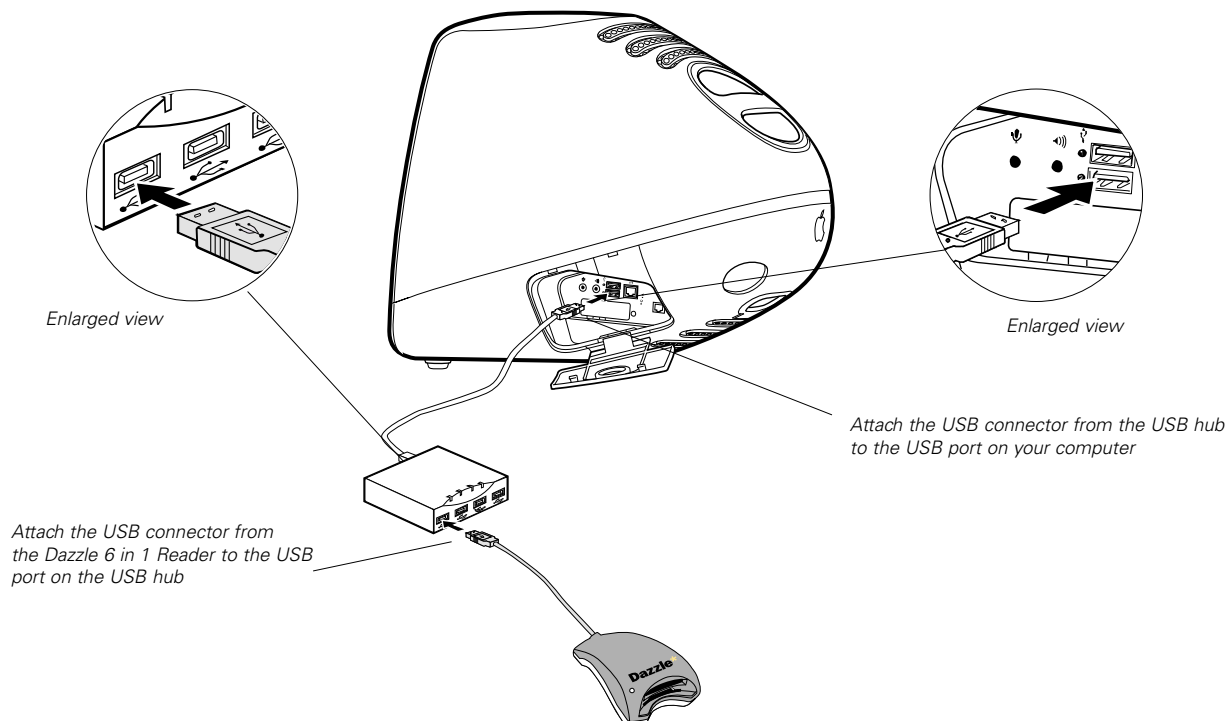
## Connecting to a USB Hub

**NOTE:** When using a Microdrive concurrent with another media, the reader becomes a high power device requiring direct connection to the host computer or self-powered hub.

- 1. Connect the USB hub (purchased separately) to the USB port on your Macintosh.**
- 2. Then connect the USB connector of the Dazzle card reader to a port on the USB hub.**

**NOTE:** The USB cable may be connected to the computer or USB hub while the computer is running.

**IMPORTANT:** Make sure the cable ends are firmly connected. Be careful not to confuse the upper and lower parts of the connector. Do not force connections, as this may damage the computer or the card reader.



# 3


## **CONNECTING** to a PC Compatible

---

**Installing the Driver Software** — 

**Installing OnDVD  
on Windows Me and XP** — 

**Connecting to the USB Port** — 

**Connecting to a USB Hub** — 

# USER'S MANUAL

## Installing the Driver Software

The Dazzle 6 in 1 Reader is relatively easy to install and operate. To avoid complications during the installation process, please follow the steps in order as described in this chapter. Before connecting and using the card reader, you must first install the driver software located on the accompanying Dazzle Installation CD-ROM.

**IMPORTANT NOTE:** Verify that your operating system requires the installation of drivers prior to installing the driver software. Driver installation is not required for Windows Me and XP. Simply connect the card reader to your computer's USB port and access your media using the "Removable Disk" icons (drive letters will also be assigned) located in "My Computer". Driver installation is required for Windows 98 SE as well as Windows 2000. Users of Windows 98SE and 2000 proceed with Step 1.

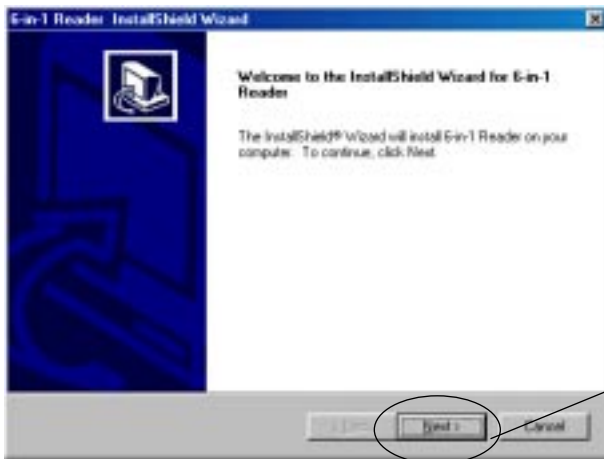
**NOTE:** The screenshots below may vary slightly from those on your computer.

## Installing the Driver Software and OnDVD Software on Windows 98SE and 2000

1. Before connecting the Dazzle 6 In 1 Reader, start your computer running Windows 98SE or Windows 2000. Please close any open applications. Insert the Dazzle Installation CD. The auto-run program will then launch the setup application. If the installer does not begin automatically, double-click on "**My Computer**." Next double-click on the drive corresponding to your CD-ROM drive, and then double-click on the "**Setup.exe**" file to begin.
2. A menu will appear with several options. Select "**Install 6 In 1 Reader Drivers**" from the menu options.



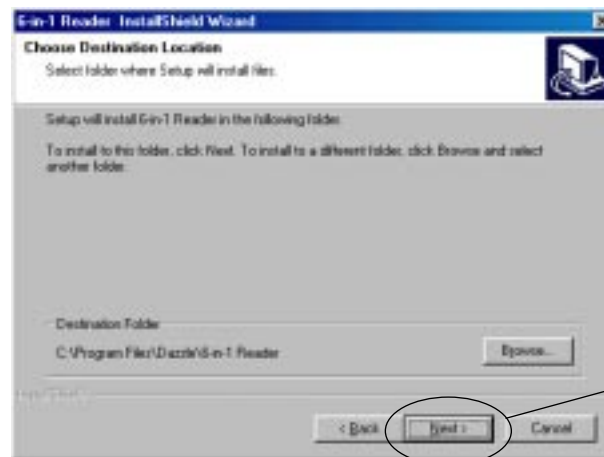
# USER'S MANUAL



- 3.** The "InstallShield Wizard for 6 In 1 Reader" welcome screen will greet you. Click **"Next"** to proceed

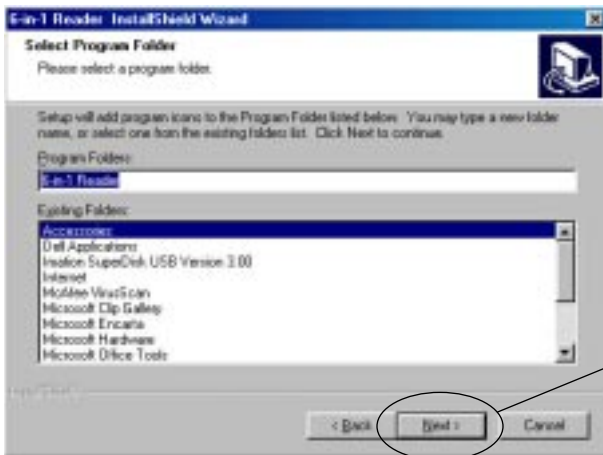


- 4.** Read the "License Agreement". To agree to the terms of the License Agreement and continue the installation click **"Yes"** as shown in the window on the left.

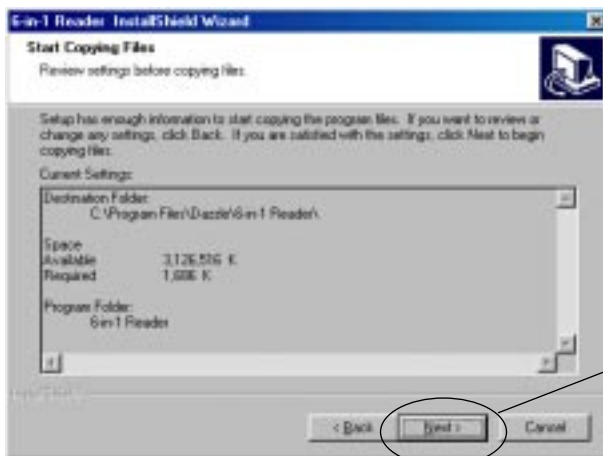


- 5.** Click **"Next"** to install the drivers to the default location on your computer.

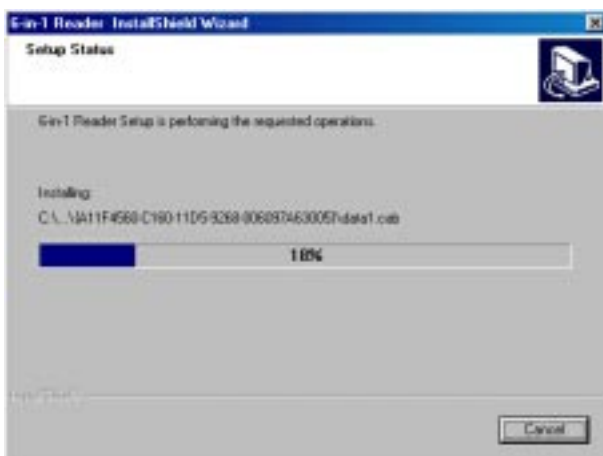
# USER'S MANUAL



6. Click **"Next"** to accept the default program folder that will be installed for your Dazzle 6 In 1 Reader.



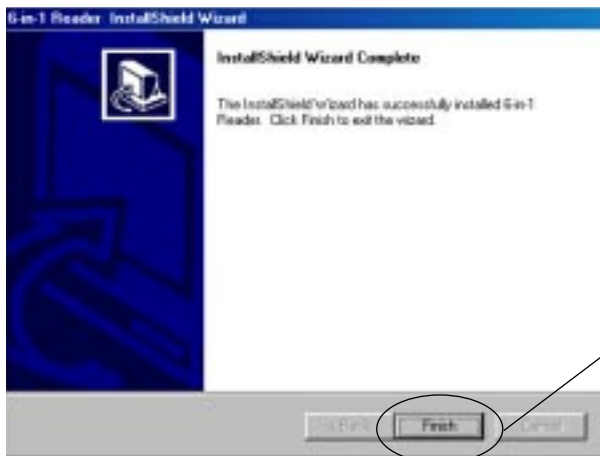
7. An overview of the installation will appear. Click **"Next"** to continue the installation.



8. You will then see a status window advising the progress of the current installation (as shown on left).



# USER'S MANUAL



9. A dialog box will appear asking if you would like to view the "ReadMe" file. To view the "ReadMe", click **"Next."** A window containing the ReadMe file will open. When finished viewing the file close the window. If you choose not to view the file, deselect the check box near "Yes I want to view the ReadMe file" and click **"Next."**

10. Click **"Finish"** to complete the driver software installation.



11. The "Install Dazzle OnDVD" splash screen will appear. To install the OnDVD software, click **"Install Dazzle OnDVD Software."** If you choose not to install the software, click **"EXIT"**, and restart your computer. Refer to the sections "Connecting to a USB Port", or "Connecting to a USB Hub" respectively for information on connecting your 6 In 1 Reader to your computer.

**NOTE:** The OnDVD software may be installed at anytime by inserting the Dazzle Installation CD and selecting **"Install Dazzle OnDVD"** from the first menu.

# USER'S MANUAL



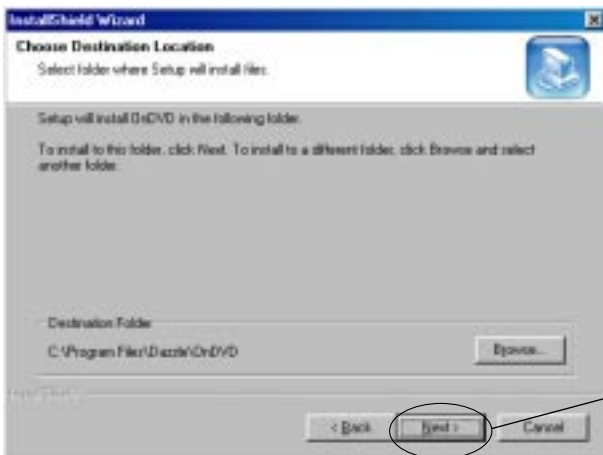
- 12.** At the OnDVD Welcome Screen, click **"Next"** to continue the installation.

Click **Next**.



- 13.** Read the License Agreement. To agree to the terms of the License Agreement and continue with the OnDVD installation, click **"Yes"** as shown on left.

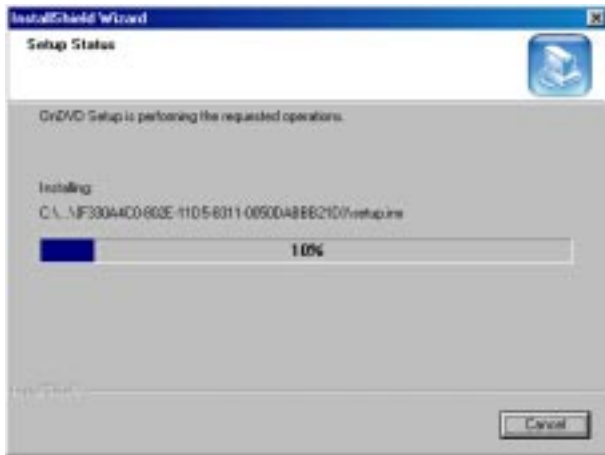
Click **Yes**



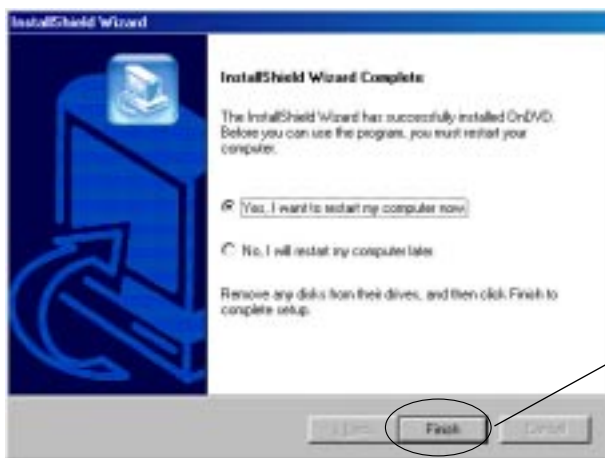
- 14.** Click **"Next"**, to install OnDVD to the default location on your computer.

Click **Next**.

# USER'S MANUAL



- 15.** OnDVD will begin the installation operation displaying a status box as shown on left.



- 16.** Click ***“Finish”*** to restart your computer.

Congratulations! The installation is now complete. You may connect the Dazzle 6 In 1 Reader to your computer after restarting. Proceed to “Connecting to a USB Port”, or, “Connecting to a USB Hub” respectively for information on connecting your 6 In 1 reader.

# USER'S MANUAL

## Installing OnDVD on Windows Me and XP:

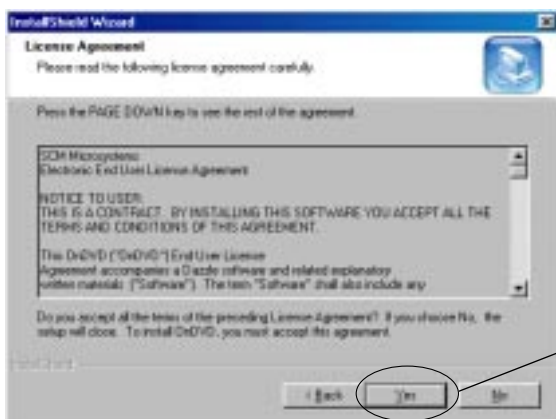


1. Insert the Dazzle Installation CD and close any open applications.
2. A menu will appear with several options. Select **"Install Dazzle OnDVD"** from the menu to begin the installation.



3. At the OnDVD Welcome screen, click **"Next"** to continue the installation.

Click **Next**

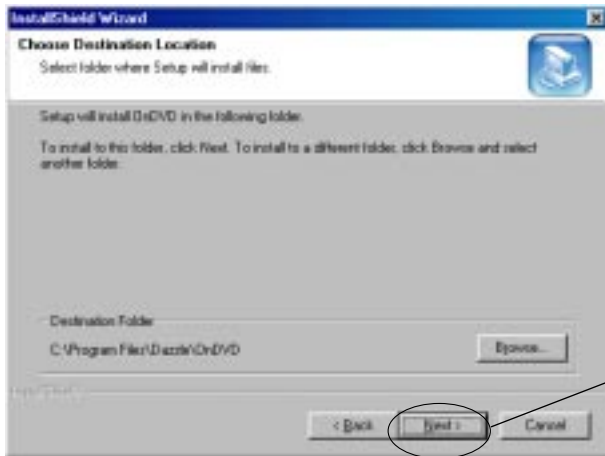


4. Read the License Agreement. To agree to the terms of the License Agreement and continue with the OnDVD installation, click **"Yes"** as shown on left.

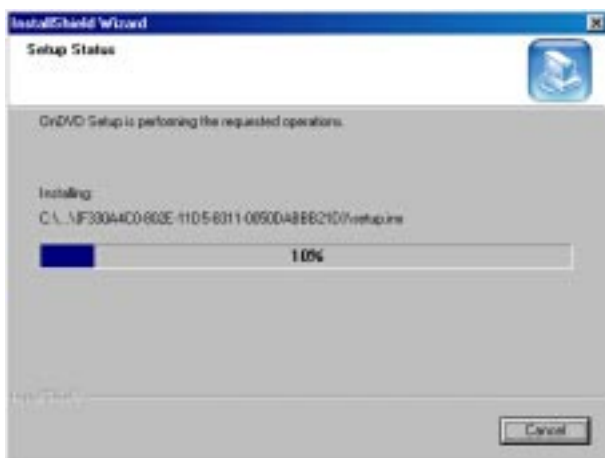
Click **Yes**

# Dazzle\*

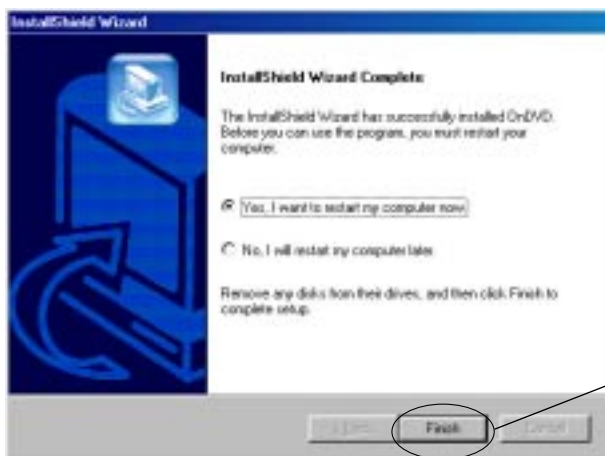
# USER'S MANUAL



5. Click **"Next"** to install OnDVD into the default location of your computer.



6. OnDVD will begin the installation operation displaying a status box as shown on left.



7. Click **"Finish"** to complete the OnDVD installation and restart your computer.

Congratulations! The Dazzle OnDVD software installation is now complete.

# USER'S MANUAL

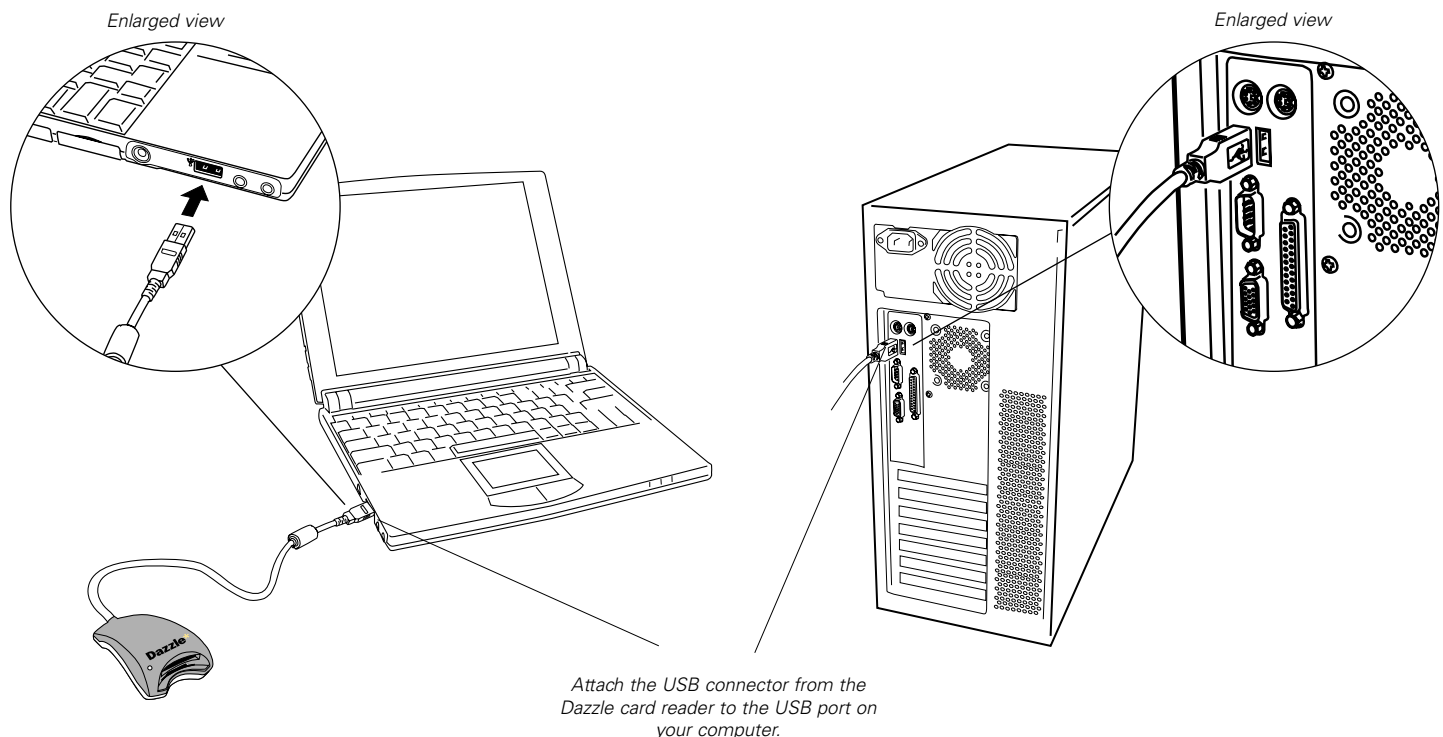
## Connecting to the USB Port

- 1. Connect the USB connector of the Dazzle 6 In 1 Reader to the USB port on your computer.**

**NOTE:** The USB cable may be connected to the computer while the computer is running.

- 2. Make sure the cable ends are firmly connected.** Be careful not to confuse the upper and lower parts of the connector. Do not force connections, as this may damage the computer or the card reader.

In the illustration below, the Dazzle card reader connects directly to the USB port on your PC compatible computer. Your Dazzle card reader can also be connected to a USB hub - see next page for more information.



# USER'S MANUAL

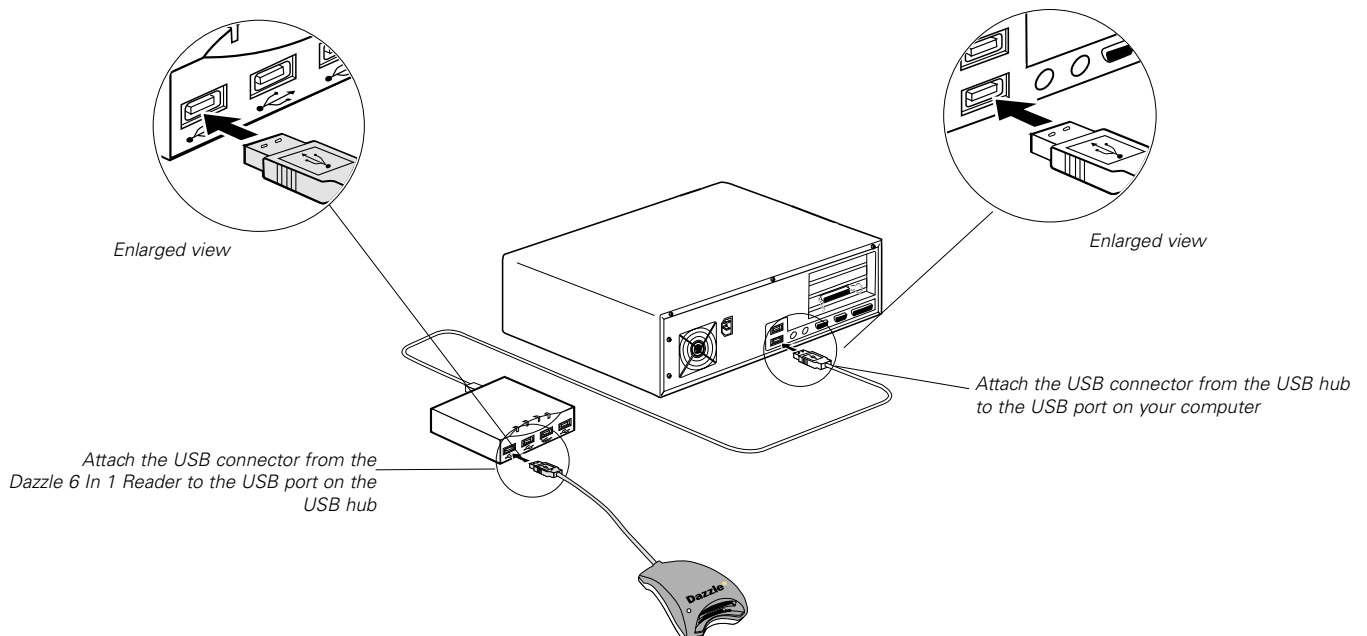
## Connecting to a USB Hub

**NOTE:** When using a Microdrive concurrent with another media, the reader becomes a high power device requiring direct connection to the host computer or self-powered hub.

- 1. Connect the USB hub (purchased separately) to your computer's USB port.**
- 2. Then connect the USB connector of the card reader to a port on the USB hub.**

**NOTE:** The USB cable may be connected to the computer or USB hub while the computer is running.

**IMPORTANT:** Make sure the cable ends are firmly connected. Be careful not to confuse the upper and lower parts of the connector. Do not force connections, as this may damage the computer or the Dazzle card reader.



## 4 HOW TO USE the Dazzle 6 In 1 Reader

Digital Media Card Compatibility — 

Inserting a SmartMedia Card — 

Inserting a CompactFlash Card — 

Inserting a MultiMediaCard  
or Secure Digital Card — 

Inserting a Memory Stick Card — 

Mounting and Accessing a Card  
(Macintosh) — 

Formatting Cards (Macintosh) — 

Removing a Card (Macintosh) — 

Inserting and Accessing a Card (PC) — 

Formatting Cards (PC) — 

Removing a Card (PC) — 



# USER'S MANUAL

This section describes the operation relating to the Dazzle 6 In 1 Reader and digital media cards. To avoid complications while attempting to use your Dazzle card reader, Dazzle recommends reading this entire chapter. For installation information, refer to “Chapter 2: Connecting to a Macintosh” (page 7) or “Chapter 3: Connecting to a PC Compatible” (page 13).

## Digital Media Card Compatibility

The Dazzle 6 In 1 Reader is a USB card reader/writer compatible with CompactFlash Type I & II, IBM Microdrive, SmartMedia, Secure Digital, MultiMediaCard, and Memory Stick digital media. Information regarding supported media types and capacities is detailed below:

The Dazzle 6 In 1 Reader is compatible with:

- SmartMedia cards in the 3.3 Volt SSFDC format only, in current capacities of up to 128MB
- All current CompactFlash cards available on the market, as well as cards in the CF II and CF+Type II formats, such as the IBM Microdrive
- Most brands of MultiMediaCard and Secure Digital formats
- Memory Stick as well as MagicGate Memory Stick media

**NOTE:** Secure mode of Sony MagicGate is not supported.

**IMPORTANT NOTE:** The lower media slot of the Dazzle 6 In 1 Reader was designed to accept SmartMedia, Secure Digital, MultiMediaCard, and Memory Stick. Only one of the four supported media types may be inserted at one time.

## Inserting a SmartMedia Card

- 1.** Position the SmartMedia card in the direction as shown in the illustration on the next page.
- 2.** Insert the card into the lower media slot with the gold contact facing down. **Gently** push the card in all the way until the card is fixed in place.

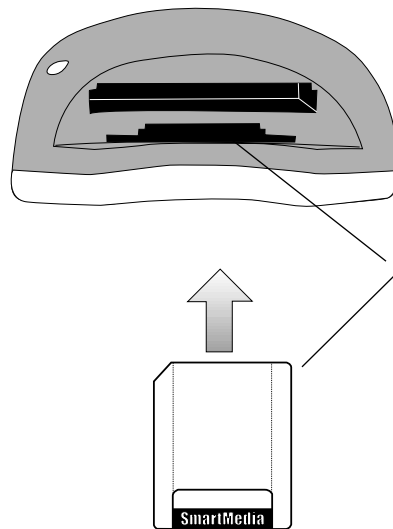
**WARNING:** Be careful not to insert the SmartMedia card in the wrong direction. Be sure to insert the SmartMedia with the gold contacts facing down. If it is forced in, the card reader or the SmartMedia may be damaged, or data on the card may be lost or corrupted. If the computer is not recognizing the media, or if it does not fit correctly, re-orientate the media and try reinserting it.

# USER'S MANUAL

## Inserting a SmartMedia Card (continued)

Insert the SmartMedia card as shown below. The Dazzle 6 In 1 Reader can only accept 3.3V SmartMedia cards. Notice the notched corner of the SmartMedia card. The location of the notch for a 3.3V SmartMedia card will appear on the right-hand side when you are looking directly at the gold contacts from the top - refer to the illustration at the bottom of the page. Flip the card over and be sure to **insert the (3.3V) SmartMedia card with the gold contacts facing down** (therefore the notch will now be located on the left when the gold contacts are face down).

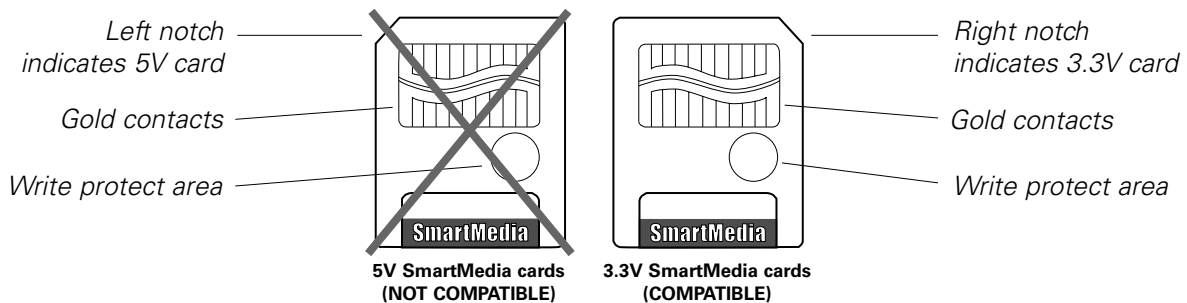
**IMPORTANT NOTE: 5V SmartMedia cards are not supported with the Dazzle 6 In 1 Reader.**



Insert card into lower slot with the notched corner inserted first and the gold contacts face down.

**Note:** As shown on the left, you should not see the gold contacts or write protect area when inserting the card into the Dazzle card reader.

### SmartMedia Card Comparison (view of cards from top)



# USER'S MANUAL

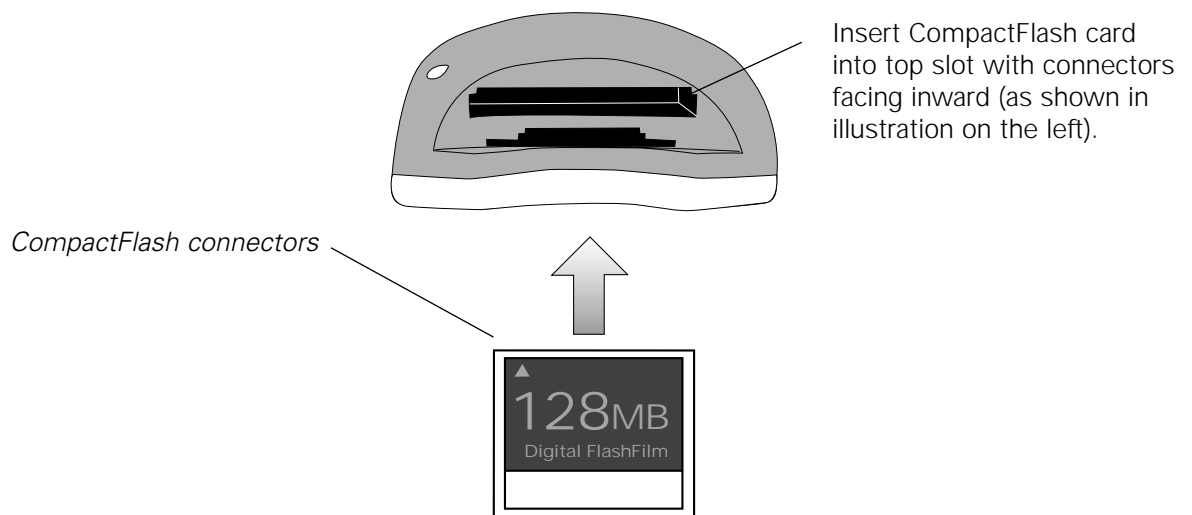
## Inserting a CompactFlash Card

**NOTE:** When using a Microdrive concurrent with another media, the reader becomes a high power device requiring direct connection to the host computer or self-powered hub.

- 1.** Position the CompactFlash card in the direction as shown in the illustration below.
- 2.** Insert the card into the top media slot being certain of the orientation - all leading manufacturers of CompactFlash cards adhere to a specification requiring a positive keying of the card. Gently push the card in all the way until the card is locked in place. The card will slide in on the molded rails and a slight amount of resistance will be felt as the connectors make contact. This is normal.

**WARNING:** Be careful not to insert the CompactFlash card in the wrong direction - be sure the connectors are facing inward and the card is not inserted upside down. If it is forced in, the card reader or CompactFlash card may be damaged or data on the card may be lost or corrupted.

**IMPORTANT:** If excessive force is required or the card just doesn't seem to fit, do not attempt to force the card in the reader, instead, contact Dazzle Technical Support for assistance.



# USER'S MANUAL

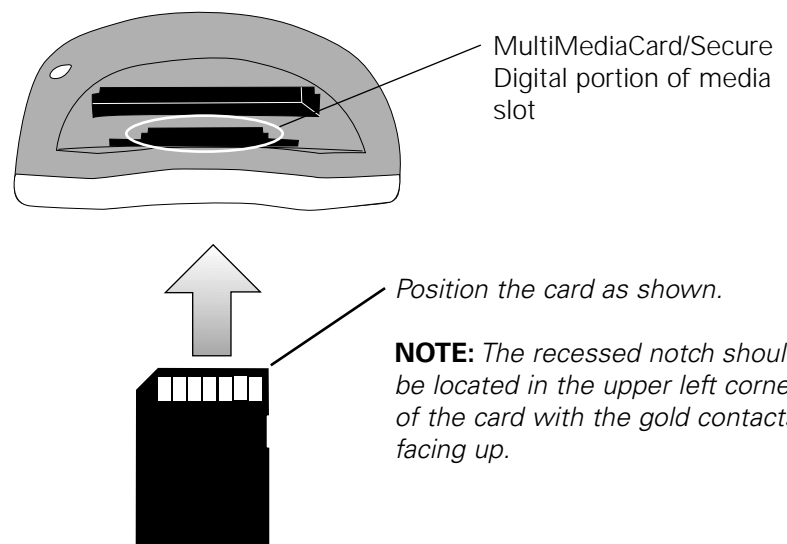
## Inserting a MultiMediaCard or Secure Digital Card

1. Position the MultiMediaCard or Secure Digital card in the direction as shown in the illustration below. A portion of the lower media slot was designed for insertion of MultiMediaCard and Secure Digital cards. This portion of the media slot will use the top of the SmartMedia slot as a guide. The Secure Digital or MultiMediaCard will slide in just above the SmartMedia slot.
2. Insert the card into the slot with the gold contacts facing up. **Gently** push the card in all the way until the card is fixed in place.

**IMPORTANT:** Notice the notched corner of the MultiMediaCard or Secure Digital card and be careful not to insert the MultiMediaCard/Secure Digital card in the wrong direction. To insert properly, be sure that the card is positioned so that the recessed notch is located on the upper left corner. You **should see** the media's gold contacts when inserting it into the slot. When inserted properly, the gold contacts will be visible and farthest from you as you look at it from the top. Refer to the illustration below for proper insertion.

**WARNING:** Insert the card gently. If it is forced in, the card reader or the actual card may be damaged, or data on the card may be lost or corrupted. If excessive force is required, or the card just doesn't seem to fit, do not attempt to force the card in the reader, instead contact Dazzle Technical Support for assistance.

**NOTE:** To utilize advanced features of Secure Digital cards as well as locking and encryption features, please refer to the documentation provided with your Secure Digital card or host device.



# USER'S MANUAL

## Inserting a Memory Stick Card

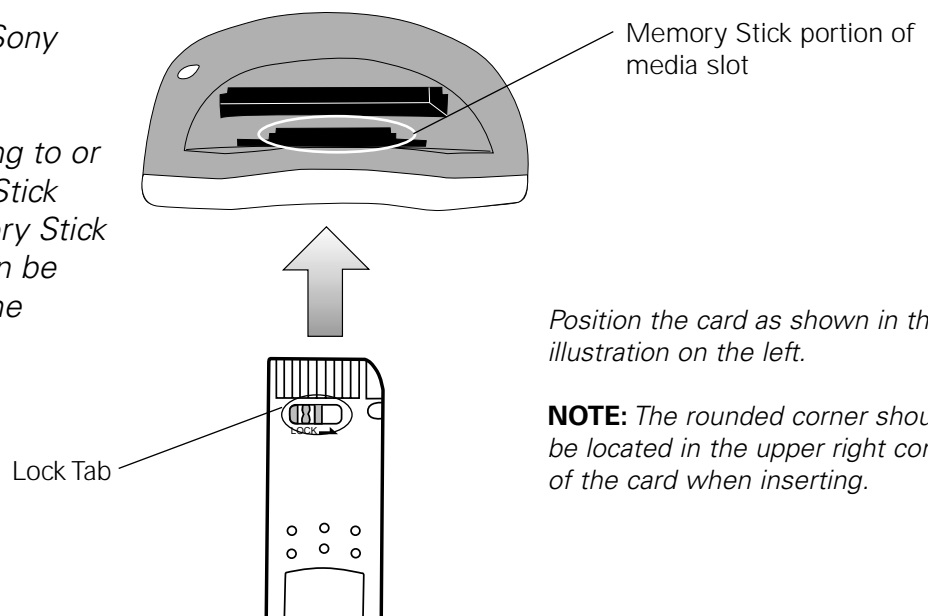
1. Position the Memory Stick in the direction as shown in the illustration below. A portion of the lower media slot was designed for insertion of Memory Stick media cards. This portion utilizes the center of the media slot for Memory Stick insertion.
2. Insert the Memory Stick into the slot with the gold contacts facing up. **Gently** push the Memory Stick in all the way until the card is fixed in place.

**IMPORTANT:** Notice the rounded corner of the Memory Stick card and be careful not to insert the Memory Stick in the wrong direction. To insert properly, be sure that the card is positioned so that the rounded corner is in the upper right corner. You **should** see the gold contacts of the Memory Stick when inserting it into the slot. When inserting properly, the gold contacts will be visible and farthest from you as you look at it from the top. Please refer to the illustration below for proper insertion.

**WARNING:** Insert the Memory Stick gently. If it is forced in, the card reader or the Memory Stick may be damaged, or data on the card may be lost or corrupted. If excessive force is required, or the card just doesn't seem to fit, do not attempt to force the card in the reader, instead contact Dazzle Technical Support for assistance.

**NOTE:** The secure mode of Sony MagicGate is not supported.

**NOTE:** If you intend on writing to or deleting from your Memory Stick media, make sure the Memory Stick is not locked. The lock tab can be found on the under side of the Memory Stick.



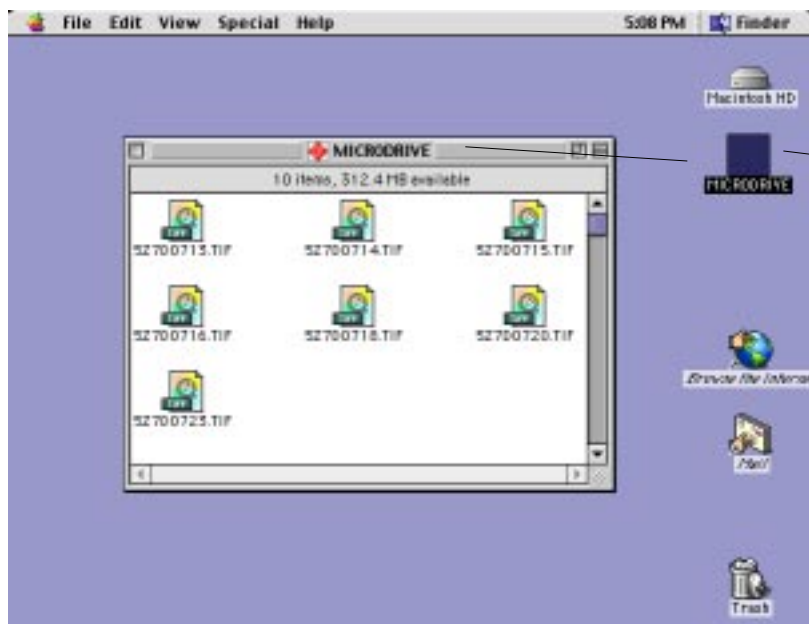
# USER'S MANUAL

## Mounting and Accessing a Card (Macintosh)

After a card is inserted on a Macintosh computer, a distinct icon will appear on the Mac OS desktop. This is the "mounted" state, which enables read and write operations for the card. The time required between card insertion and mounting depends on the type and brand of card. Usually, a card can be mounted and accessed within a few seconds.

When a card is mounted, it can be used in the same fashion as a floppy or other type of removable disk. Double-click the icon to open it's respective file window. For example, in the screen shot below - an IBM 340MB Microdrive was inserted into the Dazzle 6 In 1 Reader. By double-clicking on the Microdrive icon you will see it contains 10 high resolution TIF images taken on a professional digital camera. The images stored on this Microdrive can be copied, opened, edited, deleted, and so forth. With the Dazzle 6 In 1 Reader, audio and video files, cell phone databases, and more can now be shared easily between your digital device (camera, cell phone, MP3 player, etc) and your Macintosh.

**IMPORTANT:** Be sure you have installed the Dazzle 6 In 1 Reader drivers prior to attempting to operate the card reader. Also be sure the Apple "File Exchange" control panel is set to load in your system folder - you can activate it using the Apple "Extensions Manager" control panel.



Removable Disk Icon  
(example shown representing:  
IBM 340MB Microdrive)

**NOTE :** Files contained within a card  
can be accessed by double-clicking on  
the cards respective icon.

# Dazzle\*

# USER'S MANUAL

## Formatting Cards (Macintosh)

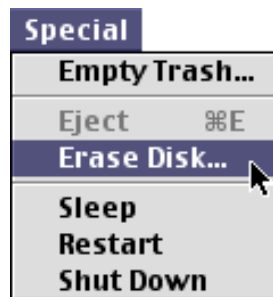
There may be instances where you may wish to format a card in the Dazzle card reader rather than in the original digital device (camera, MP3 player, etc.). There may also be times when you may be required or prompted to format your card. As such, please read the information in this section for information on formatting CompactFlash, MultiMediaCard, Secure Digital, SmartMedia, and Memory Stick cards.

**WARNING:** Formatting a card will completely erase all data currently stored on the card. If there are important images or files you wish to safeguard for later use, make a backup copy on your hard drive, CDR drive, or other type of removable media.

### Formatting CompactFlash, SmartMedia, MultiMediaCard, Secure Digital, and Memory Stick cards:

**NOTE:** Screenshots below may vary slightly from those on your computer.

1. Select the "**Erase Disk**" command in the "Special" menu (as shown below).



2. As formatting a card will completely erase any data currently stored on the card, a dialog box will appear asking if you wish to completely erase the card as shown below. Click "**Erase**" to begin formatting the card. Or, click "**Cancel**" if you do not wish to format the card.



# USER'S MANUAL

## Removing a Card (Macintosh)

1. Make sure that the "Access" indicator is not flashing. The access indicator will flash when data is being read or written on the card. Wait until the operations are complete and the access indicator is no longer flashing before attempting to remove the card. Removing a card during access operations will cause the data to be lost or corrupted.

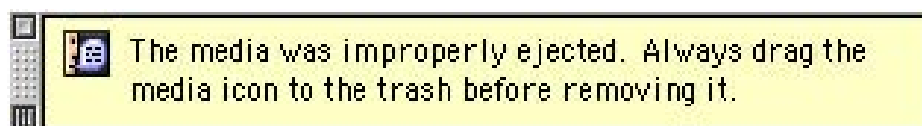


*Drag the card icon to the trash.  
The card icon will disappear and  
a dialog box similar to the one  
below will appear.*

2. Drag the card icon and drop it onto the trash icon as shown above. The card icon will disappear from the desktop. A dialog box similar to the one below will appear. It is now safe to remove the card. To remove a card, grasp the end of the card with your thumb and index fingers, and remove the card from the slot.



**WARNING:** Do not remove a mounted card without first dragging the card icon to the trash. You may risk the chance of corrupting data stored on your card if removed improperly. If removed improperly, a warning message may appear on the screen - warning you that the media was not properly ejected.



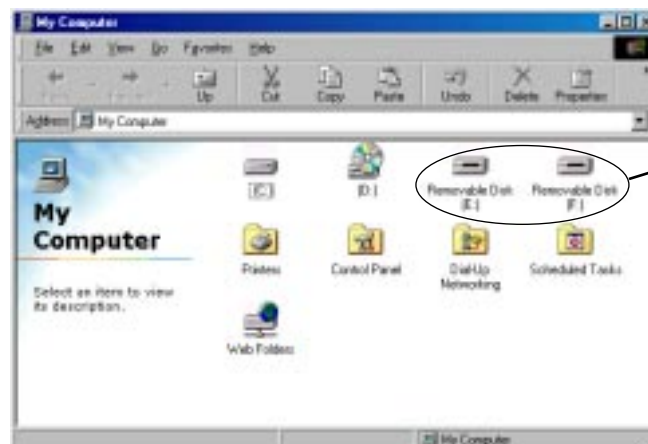


# USER'S MANUAL

## Inserting and Accessing a Card (PC)

With a PC compatible computer running Windows (98SE, 2000, Me, or XP), two "Removable Disk" icons with newly assigned driver letters (see illustration below) will appear in "My Computer". In general, the first "Removable Disk" icon will be assigned to the upper or CompactFlash slot. The second "Removable Disk" icon will be assigned to the lower or SmartMedia, Secure Digital, MultiMediaCard, and Memory Stick slot. This lower slot is designed to accept any of the four supported media types listed above. Only one of the four supported media types may be inserted at one time.

To access your digital media, double-click on the media's respective "Removable Disk" icon. If media is not inserted while double-clicking the icon, the message "Device not ready" or "Please insert a disk" will appear. Insert a card and try accessing the media again. Once you have opened the drive, the contents of the media card will be displayed. This is how you will access your images or data stored on your media.



Dazzle 6 In1 Reader  
"Removable Disk" icons.

**NOTE:** Digital cameras will usually create a folder on the digital media card, which contains your digital images. To access the digital images, you must first open the folder(s) and double-click on the icon(s) representing the digital image(s) you wish to view.

**IMPORTANT:** The lower media slot of the Dazzle 6 in 1 Reader is designed to accept one of four supported media types at one given time. In the course of usage, you may insert either SmartMedia, Secure Digital, MultiMediaCard, or Memory Stick media into the lower slot of the Dazzle 6 In 1 Reader at any one time. However, it is possible to use both the CompactFlash slot and one of the four media types supported for use in the lower media slot concurrently.

# USER'S MANUAL

## Formatting Cards (PC)

There may be instances where you may wish to format a card in the Dazzle card reader rather than in your original digital device or when the format option is not present. There may also be times when you may be required or prompted to format your card. As such, please read the information in this section for information on formatting cards.

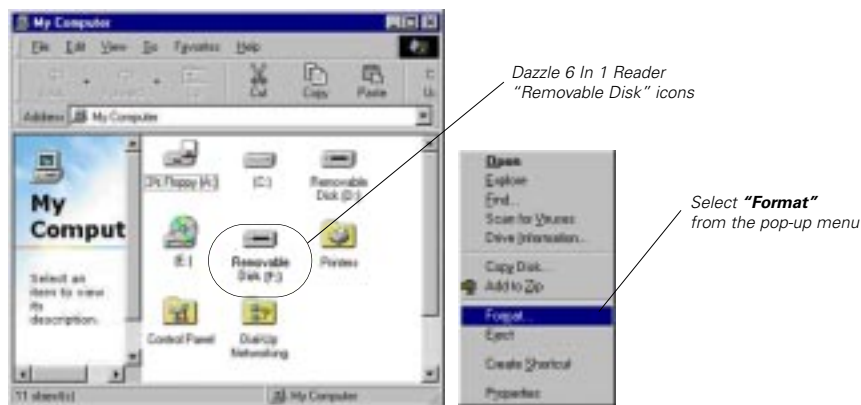
**WARNING:** *Formatting a CompactFlash, SmartMedia, MultiMediaCard, Secure Digital, or Memory Stick card will completely erase all data currently stored on the card. If there are important images or files you wish to safeguard for later use, make a backup copy on your hard drive, CDR drive, or other type of removable media.*

### Formatting CompactFlash, MultiMediaCard, Secure Digital, SmartMedia, or Memory Stick cards:

**NOTE:** If you have not installed the drivers for your Dazzle 6 In 1 Reader or if driver installation is not required; you may format the media using the standard Windows operating system format option only.

#### Windows Me and Windows XP

1. Open **"My Computer"** or **"Windows Explorer"**.
2. Right-click the **"Removable Disk"** icon (drive letter will also be assigned) that pertains to your media type and select **"Format"** from the pop-up window.

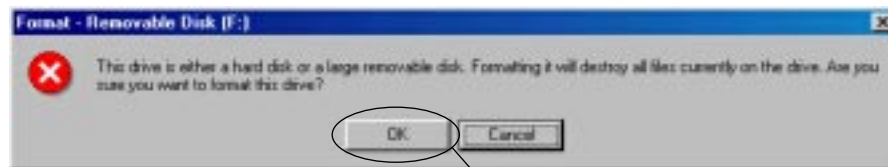


# USER'S MANUAL



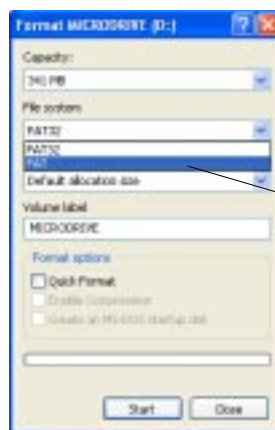
3. Select your format type (Full or Quick) and click **"Start"** to begin.

4. A dialog box similar to the example shown below will appear warning that you are about to erase everything on the media.



5. Click **"OK"** to proceed.

**IMPORTANT NOTE:** When formatting your digital media on Windows XP using the Dazzle 6 In 1 Reader, select **"FAT"** from the "File System" drop-down menu. This will ensure that your media has been properly formatted for use in digital cameras as well as other digital devices requiring the "FAT" file system.



Select **"FAT"** from the **"File System"** drop-down menu.

# USER'S MANUAL

6. Click "**Close**". Format is now complete.

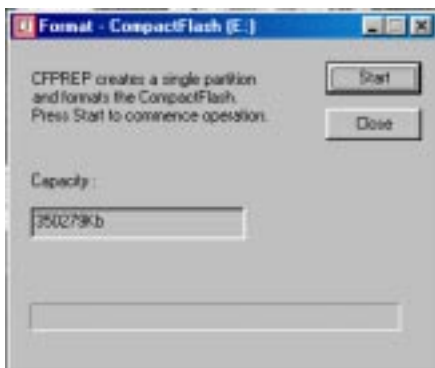


**NOTE:** Formatting your media using the standard Windows format option conforms only to Windows operating system specifications.

# USER'S MANUAL

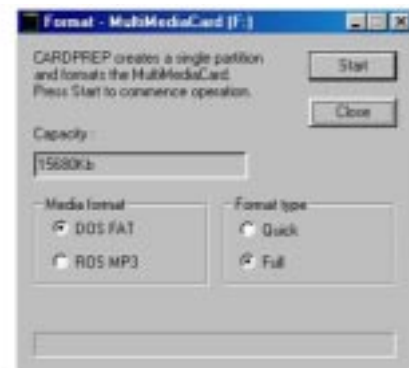
## Windows 98SE and Windows 2000

1. Click on the **"Start"** button located in the lower left hand corner of your desktop and select **"Programs"** from the pop-up menu.
2. This will display a list of the programs installed on your computer. From the list of programs select **"6 In 1 Reader"**.
3. Once you have selected the **"6 In 1 Reader"**, you will notice there is a media prep utility for each supported media type (i.e. CFPREP for CompactFlash, SMPREP SmartMedia, CARDPREP for MultiMediaCard and Secure Digital, and MSPREP for Memory Stick). Select the media prep utility that pertains to your media type. You will see a message similar to one of the examples shown below.



**CompactFlash format screen:**

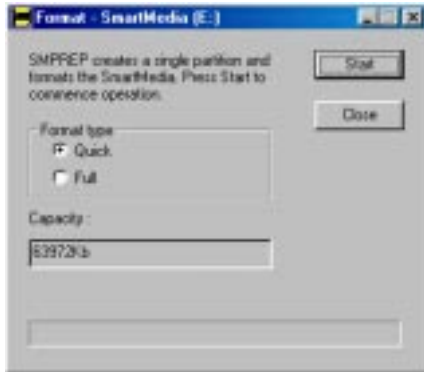
*The CFPREP utility will create a single formatted partition on your CompactFlash card - no other formatting options are available.*



**MultiMediaCard/Secure Digital format screen:**

*The CARDPREP utility for your MultiMediaCard or Secure Digital cards, provides two format options. In general, select the "DOS FAT" option to format your card. However, in some instances owners of MP3 players may be required to format a card in "ROS MP3" format. Consult the manufacturer of your MP3 device to find out if it uses this file format.*

# USER'S MANUAL



**SmartMedia format screen:**

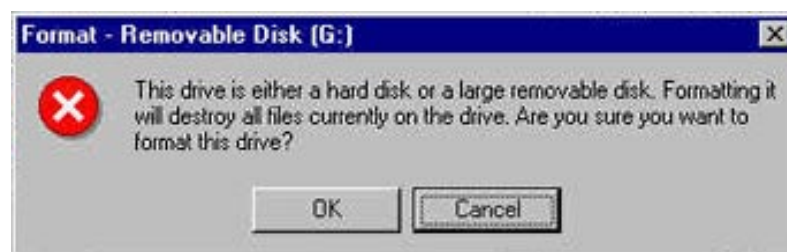
The SMPREP utility provides two format options for your SmartMedia card. The "Quick" format option is selected by default, and recommended for general use to erase data on your SmartMedia card. If you experience problems with your SmartMedia, you may wish to select the "Full" format option to completely erase and scan your SmartMedia card for any bad data blocks.



**Memory Stick format screen:**

The MSPREP utility provides two format options for your Memory Stick card. The "Quick" format option is selected by default, and recommended for general use to erase data on your Memory Stick, if you experience problems with your Memory Stick you may wish to select the "Full" format option to completely erase and scan your Memory Stick for bad data blocks.

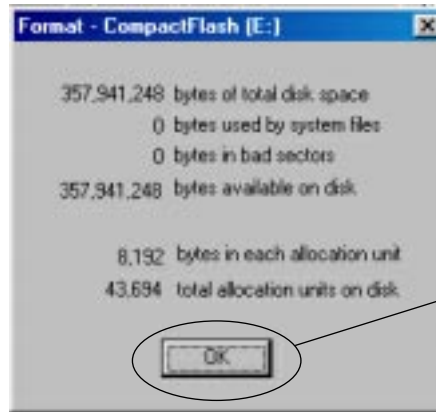
4. Click **"Start"**. A dialog box similar to the example shown below will appear warning that you are about to erase everything on the media.



5. Click **"Yes"** to proceed. This will format the media, bringing up a format status screen until the format completion.

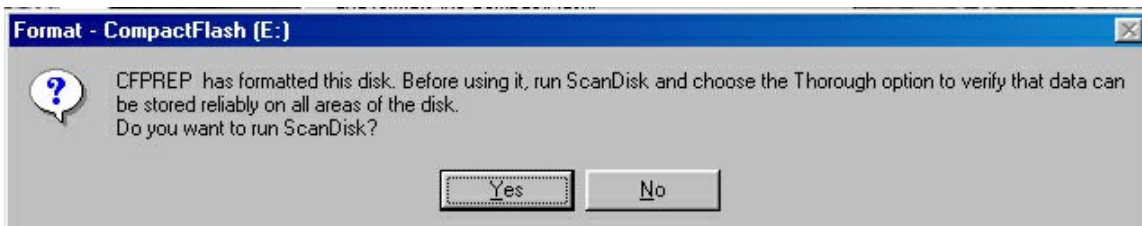
# USER'S MANUAL

6. Click **"OK"**. Formatting is now complete.



## **IMPORTANT NOTE:**

After formatting MultiMediaCard, Secure Digital, Memory Stick, and CompactFlash cards in Windows 98SE, a dialog box (similar to the one below) will appear recommending that you run the "ScanDisk" Utility. If you are experiencing problems with your card you may wish to click **"Yes"** to verify that data can be stored reliably on all areas of your card. However in day-to-day use clicking **"No"** will suffice. In Windows 2000, upon format completion, it will be suggested that you run the "Check Disk" Utility to verify that data can be stored reliably. As in Windows 98SE, if you are experiencing difficulties with your media, running the utility is recommended. If you are not experiencing difficulties, it will not be necessary to run the utility.



7. Finally, click **"Close"** on the format screen to exit the formatting utility.

# USER'S MANUAL

---

## Removing a card (PC)

- 1.** Make sure that the "Access" indicator is not flashing. The access indicator will flash when data is being read or written on the card. Wait until the operations are complete and the access indicator is no longer flashing before attempting to remove the card. Removing a card during access operations will cause the data to be lost or corrupted.
- 2.** To remove a card, grasp the end of the card with your thumb and index fingers, and remove the card from the slot.



# USER'S MANUAL

## Dazzle OnDVD

Software for PC Compatible  
Computers

Introduction — 

Definitions — 

Getting Started — 

Menu Items Reference — 

Troubleshooting — 

Upgrade Information — 

**Dazzle\***

# USER'S MANUAL

## Dazzle OnDVD Software

### INTRODUCTION

Dazzle OnDVD is easy-to-use software that lets you take your digital pictures and turn them into a slideshow you can record to a CD for playback on your DVD player. Simply select the pictures you want to put into your slideshow (maximum 500 pictures per CD), arrange them on the timeline and record the slideshow to a CD with your CD-Recorder.

OnDVD records two copies of your pictures to the CD disc. The first session is a slideshow in the VideoCD (VCD) format, which can be played back in a DVD player (or VCD player), connected to your TV. The second session is a backup copy of all your high quality pictures, which can be read back from your PC's CD-ROM or DVD-ROM drive. If you put the CD into a DVD Player, the slideshow will automatically play. If you put the CD into your PC, you can automatically look at the archived pictures.

### DEFINITIONS

CD-R Discs (CD-Recordable) - On this media type, you can write data to a CD but you cannot erase it once you have written it. Not all DVD players can read CD-R discs. If your DVD player does not read CD-R discs, try recording your slideshow on a CD-RW disc. Check your DVD player owner's manual to see if your player reads CD-R discs.

CD-RW Discs - On this type of media, you can write, erase and re-write data many times. All DVD Players should be able to read CD-RW media.

CD-Recorder - A PC peripheral which records information from a computer onto a CD-R or CD-RW disc.

DVD - Digital Video Disk. DVD is the latest format for high quality video. DVD is an extremely versatile and high quality format and is used extensively for distributing movies. DVDs can be played back in DVD players connected to a TV or also in DVD-ROM drives on a computer using DVD player software.

DVD Player - A consumer electronics device which can be connected to a TV to play back DVDs. Most DVD Players can also play back VideoCDs.

# USER'S MANUAL

## DEFINITIONS (continued)

JPG - Also known as 'JPEG', this file format is used by the vast majority of digital cameras and applications for digital photographs. JPG is the predominant file format for digital picture files on the Internet.

VCD - VideoCD. VideoCD is a special CD format normally used for video but which can also be used for photos. VCDs can be played in all VCD Players and almost all DVD players connected to a TV.

VCD Player - A consumer electronics device which can be connected to a TV to play back VideoCDs. VideoCD Players are popular in Asia but seldom found elsewhere.

## GETTING STARTED

### System Requirements-

*Operating Systems-* Windows® 98  
Windows® 2000  
Windows® NT  
Windows® ME  
Windows® XP

*CPU-* Pentium® II 300 MHz or higher  
AMD K6® III 400 MHz or higher

*RAM-* 32 MB required  
64 MB recommended  
Available Disk Space  
32 MB for Application Installation  
Up to 1 GB available for workspace

Other necessary hardware:

Digital Camera  
Flash Memory Card Reader  
CD-R or CD-RW Recorder  
DVD Player, VCD Player, CD-ROM or DVD-ROM Drive

# USER'S MANUAL

## Tutorial - How to use Dazzle OnDVD 1.5

### Creating VCD slideshows

#### *Step 1 - Locate your digital pictures*

The pictures may be in a directory on your computer or in the digital camera. In most cases, your digital camera loads pictures onto a flash memory card. Access these pictures easily by removing the card from the camera and inserting it into a flash memory card reader. You can view the contents of the card reader in Windows Explorer.

#### *Step 2 - Launch Dazzle OnDVD*

- Click the **'Start'** Button, then select **'Programs'** and then **'OnDVD'**

#### *Step 3 - Load your digital pictures*

- Click on the **'Add Directory'** button to add all the files in a folder or click **'Add Image'** to add one image at a time
- Navigate to the directory which contains the pictures you wish to import
- Select that directory or image and click **'OK'**

A dialog box will appear to inform you of how many images were added.

- Click **'OK'**

Your pictures will be added to the Picture List in the left pane of the software and a thumbnail image of the pictures will be displayed on the timeline bar in the bottom pane in the order in which they will appear in the slide show.

#### *Step 4 - Select images to view*

Click on the filename in the Picture List to display that picture in the Picture Preview window.

# USER'S MANUAL

## Tutorial (cont.)

### **Step 5** - Remove unwanted pictures

- Click on the picture that you wish to remove from your slideshow
- Click the **'Remove'** button or press the **'Delete'** key to remove the selected picture
- Click the **'Remove All'** button to remove all the pictures from your slideshow.

The selected pictures will be removed from the Picture List and the Timeline but will not be deleted from your computer.

### **Step 6** - Preview your slideshow

Before you record the CD, make sure you are happy with the slideshow by previewing it.

- Click the **'Preview'** button in the toolbar to view the slideshow
- The slideshow will return to the main screen when the preview is complete
- Press the **'Esc'** key to cancel the preview at any time

**Note:** Each picture in the slideshow will stay on the screen for 3 seconds before moving to the next picture. If you wish to increase the amount of time that a certain picture will be displayed, click the right mouse button on the name of the picture in the image list and go to **'Display Time'**. After you have changed the display time, click **'OK'**.

### **Step 7** - Write the CD

Now that you have the slideshow ready, you can create the CD.

- Insert a blank CD-R or CD-RW disc into the CD-Recorder
- Click the **'Write VCD'** button on the toolbar

### **Step 8** - Play your CD in a VCD or DVD player

Insert the CD into a VCD or DVD player, and you will be able to view your slideshow on a television screen. The slideshow plays in an auto-repeat loop. When you are finished viewing the slideshow, just press the **'Stop'** button on the DVD player and eject the disk.

# USER'S MANUAL

## Tutorial (cont.)

### *Step 9- See the original picture files on the CD*

- Insert the CD into the CD-ROM or DVD-ROM drive on your PC.
  - The viewer application should automatically open
  - If the viewer window does not automatically launch, open Windows Explorer.
  - Navigate to the drive letter of the CD-ROM or DVD-ROM drive
  - Launch the application on the CD named 'Viewer.exe'
  - The OnDVD Viewer application will be launched.
  
- In the OnDVD Viewer window, select the CD-ROM or DVD-ROM drive from the drop-down list all of the original high-resolution pictures are stored on this disc. In addition to creating a slideshow disc, you have created an archive of the original pictures on the CD.

## Webcasting

- Follow steps 1-7 above to create your slideshow
  
- Click the '**WebCast**' button and then click '**Next**'. OnDVD will create a video slideshow to send to the web. Click '**Next**' again and type in your Dazzle WebCast Theater username and password. Then click '**Login**'. If you have never used WebCast Theater before, click '**Register**' and fill out the appropriate information. Once you are finished, anyone can view your files by going to the Dazzle Webcast Theater website by first visiting [www.Dazzle.com](http://www.Dazzle.com) and selecting "**Webcast**", then "**Webcast Theater**".

# USER'S MANUAL

## MENU ITEMS REFERENCE

*File/Exit* - Closes the Dazzle OnDVD application

*Video CD/Add Picture* - Adds a specific picture to the timeline

*Video CD/Add Directory* - Adds an entire directory of pictures to the timeline

*Video CD/Remove Picture* - Removes a selected picture from the timeline

*Video CD/Remove All* - Removes all pictures in the Picture List from the timeline

*Video CD/Write VCD* - Creates a Video CD from your slideshow

*View/Picture List* - Toggles the view of the Picture List window pane

*View/Timeline* - Toggles the view of the Timeline window pane

*View/Options* - Opens the Video Standard Options. Most TV's in North America and Asia are NTSC.  
Most in Europe are PAL.

*Help/About* - Gives version information for Dazzle OnDVD

*Help/Help Topics* - Launches the help file

## TROUBLESHOOTING

### 1. My slideshow won't play on my DVD player.

- a) Check the Owner's Manual of your DVD player to see if it can read VCDs (VideoCDs). If it can, go on to step b. If it cannot, you will not be able to view your slideshow on this DVD player.
- b) If you recorded the slideshow onto a CD-R disc, check the Owner's Manual of your DVD player to see if your DVD player can read CD-R discs. If it can read a CD-R disc but it will not play the slideshow, you probably have a damaged CD-R disc. Re-record it and try again. If your DVD player cannot read CD-R discs, re-record your slideshow to a CD-RW disc and try to play it again.
- c) If you recorded the slideshow onto a CD-RW disc and it will still not play, check the bottom of the CD-RW disc for fingerprints or scratches. Re-record to a new CD-RW disc if necessary.
- d) If you are unable to find information in your DVD player Owners Manual, you can often find the information on the Internet. Check the DVD player's manufacturer website. You can also visit [www.vcdhelp.com](http://www.vcdhelp.com) for information on many different DVD players.

### 2. I can't read the archived files from the CD on my PC.

- a) You must use the included file viewer program to read the CD from your PC.
- b) If the viewer program did not automatically launch when you inserted the CD, remove the CD and re-insert it.
- c) If the viewer program still did not launch, click on the '**Viewer.exe**' file on the CD.
- d) If the viewer launched and no files are visible, re-record the CD and try again.



## TROUBLESHOOTING (continued)

### 3. I can't record to my CD-Recorder. Does OnDVD support my CD-Recorder?

- a) OnDVD supports almost all commercially available CD-Recorders and new recorders are constantly being added. If you cannot record to your CD-Recorder, check the Dazzle website for software upgrades.
- b) If you downloaded all upgrades and you can still not record to your CD-Recorder, call technical support to check on when support for your CD-Recorder will be added.
- c) Make sure the CD is blank. OnDVD requires that the destination CD be blank.

For the most up to date support information, please refer to:

**<http://www.Dazzle.com/support/trouble.html>**

## UPGRADE INFORMATION

For OnDVD upgrade information, please go to **[www.Dazzle.com](http://www.Dazzle.com)**.

# USER'S MANUAL

## Troubleshooting

---

your Dazzle 6 In 1 Reader

Common Troubleshooting Questions and Answers 

**Dazzle\***

# USER'S MANUAL

## Troubleshooting your Dazzle 6 In 1 Reader

Installation and use of the Dazzle 6 In 1 Reader is relatively easy and normally should not produce complications. However, if you are experiencing difficulties with your card reader, please refer to the following troubleshooting guide for a possible solution. Additional tips and solutions as well as product information can be found on the Dazzle interactive support website: [www.Dazzle.com/support](http://www.Dazzle.com/support). If the problems persist after trying the solutions provided below and on our web site, please contact our Technical Support Department.

### **1. I have connected my Dazzle 6 In 1 Reader to my computer's USB port and was unable to find the appropriate drivers during installation.**

#### **PC Compatible:**

Prior to connecting the Dazzle 6 In 1 Reader to your computer's USB port, you must first install the card reader driver software (if required). The Dazzle 6 In 1 Reader **does not** require driver installation on Windows Me or Windows XP. Driver installation **is required** on Windows 98SE and 2000. The software for Windows 98SE and Windows 2000 is located on the accompanying installation CD-ROM. Please refer to the section of the User's Manual titled "Installing the Driver Software" for installation instructions.

#### **Macintosh:**

Prior to connecting the Dazzle 6 In 1 Reader to your computer's USB port, you must first install the Dazzle 6 In 1 Reader driver software. Driver installation is required. The software for Mac OS 9.x is located on the accompanying installation CD-ROM. Please refer to the section of the User's Manual titled "Installing the Driver Software" for installation instructions.

# USER'S MANUAL

- 2. I have installed the Dazzle 6 In 1 Reader drivers (where necessary) and have the card reader plugged into my USB port, but when I insert my digital media card nothing happens.**

## **PC Compatible:**

The Dazzle 6 in 1 Reader is a digital card reader/writer that is accessed as a removable disk. In order to access the digital images or data stored on your media card, you must access the card reader through its "Removable Disk" icons. This can be done by first opening "**My Computer**". Here you will see two "Removable Disk" icons (drive letters will also be assigned) representing your Dazzle card reader. Now double-click on the respective "**Removable Disk**" icon to display the contents of the media inserted in your card reader. This is where your digital images or data will be located.

Digital cameras will usually create a folder on the digital media card, which will contain your digital images. Depending on the digital camera you have, the folder names will vary. Double-click on the respective folder name to access the digital images contained within. You can create a preview by double-clicking on one of the image icons.

## **Macintosh:**

Once a card is inserted on a Macintosh, a distinct icon will appear on the Mac OS desktop. This is the "mounted" state which enables read and write operations for the media. Opening the media icon will allow you access to the images stored on your respective media card. Depending on the media used, the time it takes a media card to mount may vary.

# USER'S MANUAL

### **3. I have inserted my media card into my Dazzle card reader, but I am unable to access my data. What do I do?**

If you are using a SmartMedia card, make sure that you have inserted the SmartMedia card into the Dazzle card reader with the gold contacts facing down. For more information regarding inserting your SmartMedia, please refer to the section titled "Inserting a SmartMedia Card" in the User's Manual.

If you are using a MultiMediaCard or a Secure Digital card, make sure that you have inserted the card with the gold contact facing up. For more information regarding inserting your MultiMediaCard or Secure Digital card, please refer to the section titled "Inserting a MultiMediaCard or Secure Digital Card" in the User's Manual.

If you are using a CompactFlash card or IBM Microdrive, make sure that you are inserting the media with the media label up and CompactFlash connectors inserted into the card reader first. For more information regarding inserting a CompactFlash card or an IBM Microdrive, please refer to the section titled "Inserting a CompactFlash Card" in the User's Manual.

If you are using a Memory Stick card, make sure that you are inserting the media with the gold contacts facing up. For more information regarding inserting Memory Stick cards, please refer to the section titled "Inserting a Memory Stick Card" in the User's Manual.

# USER'S MANUAL

- 4. I can see the images on my media inserted in the Dazzle 6 In 1 Reader, but how do I download them to my computer.**

**PC Compatible:**

Images and data can be downloaded or transferred to your computer using basic Windows file transfer techniques. Two of such techniques are drag and drop as well as copy and paste.

For information on both drag and drop as well as copy and paste, please refer to your Windows "Help" file, or "Help and Support" in Windows XP, under the "Start" button located in the lower left corner of your Windows desktop. Once you have opened Windows "Help", begin by clicking on the **"Index"** tab. This will display the contents of the Windows "Help". Now scroll down to and double click on "copying files, folders". To access help information in "Help and Support" on Windows XP, simply enter copy and paste into the search box.

**Macintosh:**

When a card is mounted, it can be used in the same fashion as a floppy or removable disk. Double-click on the icon to open its respective file window. Once you have opened the file window, holding down the option key, drag and drop the desired images from the media to a location of your choice.

- 5. I am trying to write to my Memory Stick card, but I am getting an error that the Memory Stick is write protected or locked.**

Please make sure that the lock tab located on the bottom of the Memory Stick media is not in the lock position.

# USER'S MANUAL

# 7

## **OBTAINING** Technical Support

**Contacting Technical Support** — 

**Returning Products for Service** — 

**Limited Warranty** — 

# USER'S MANUAL

## Contacting Technical Support

The Dazzle 6 In 1 Reader is relatively easy to maintain and operate and normally should not produce complications. However, if you need assistance or have questions of any kind, our trained staff members are ready to help. Our Technical Support Department can be reached by calling 203-315-4230 from 8:00 a.m. to 9:00 p.m. (EST), Monday through Friday or by fax at 203-483-5985. In the U.K, please contact local support at +44 118 979 1026. We recommend having your computer nearby when calling to facilitate troubleshooting. Email support as well as 24 hour Technical Support is available via our interactive support website: [www.Dazzle.com/support](http://www.Dazzle.com/support).

## Returning products for service

When calling for support, if a Technical Support specialist recommends that you return the product to Dazzle, the Technical Support specialist will transfer you to Customer Service for a **Return Merchandise Authorization (RMA)** number. The RMA number **must** appear on the outside of your shipping carton. Our Receiving Department will refuse any package that does not carry an RMA number. Pack the Dazzle 6 In 1 Reader in its original box. Be certain that it fits snugly and is surrounded with the original packing material. If original packing material is not available, product must be secured in packing material as not to cause damage.

- Improper packing can result in damage to the device, and may result in voiding the warranty.
- We will not accept an improperly packaged device.

You are responsible for paying the cost of shipping the device in for repair; we will pay the return shipping on any Warranty RMA. Be sure to include the RMA number on the outside of the box. Please ship the device to:

**SCM Microsystems, Inc.**  
**Retail Brands Group**  
**20 Carter Drive**  
**Guilford, CT 06437 USA**

**Dazzle** 



# USER'S MANUAL

## SCM Microsystems, Inc. LIMITED WARRANTY

SCM Microsystems, Inc. warranty obligations are limited to the terms set forth below:

SCM Microsystems, Inc., Retail Brands Group, ("The Company") warrants this product against defects in material and workmanship for a period of one (1) year from the date of original retail purchase. For residents of the European Union, the warranty is two (2) years from the original date of purchase.

This limited warranty is made only to the original end user purchaser ("you") of the product and does not extend to any subsequent purchasers or owners of the product. The "original end user" is the first user to put the product into service in any fashion, but the term "original end user" shall exclude dealers. Dealers shall not be entitled to the benefits of the limited warranty.

It is your responsibility to establish the warranty period by verifying the original purchase date. Accordingly, to avoid dispute, you should return the warranty card within ninety (90) days after the date of purchase.

If you discover a defect, The Company will, at its option, repair or replace this product with a new or reconditioned product at no charge to you, provided you return it during the warranty period, with transportation charges prepaid. (You can obtain additional information by contacting a Customer Service Representative at the telephone number printed on the certificate.) In the event that an alternate product is unavailable, The Company will refund the cost of goods at a pro-rated amount. To each product returned for warranty service, please attach your name, address, telephone number, and a copy of the bill of sale bearing the appropriate serial numbers as proof of date of original retail purchase, as well as a detailed description of the problem for which service is requested. Prior to returning the product, you must obtain from The Company a Return Merchandise Authorization Number (RMA#). You are responsible for packaging the product to be returned, and should take care that the product is packed in its original packaging. If the repairs are covered by the Limited Warranty and if the product was properly shipped to The Company, The Company will pay the return shipping charges.

This warranty applies only to hardware products manufactured by The Company that can be identified by The Company's trademark, trade name, or logo affixed to them. This warranty does not cover: damage resulting from accident, misuse, abuse, or neglect and/or damage during any type of transportation resulting from improper packaging; damage to any product which has been altered in any fashion, including the alteration or removal of any serial number; damage resulting from causes other than product defects, including and not by way of limitation, lack of technical skill, competence, or experience of the user, and/or failure to use the product in accordance with the instructions provided in the User's Manual; and service performed by an unauthorized person or entity.

All computer software either sold and/or licensed to a purchaser or user is done so on an "as is" basis. The only warranties relating to such software, if any, are provided by the Master Licensor of such software and are set forth in the User's Manual. The entire risk as to the quality and performance of such software is with the purchaser or user. Should such software prove defective following its purchase the purchaser or user, as the case may be (and not The Company) assumes the entire cost of all necessary servicing or repair.

Any implied warranties including fitness for use and merchantability are limited in duration to the period of the expressed warranty set forth above. The remedies provided under this warranty are exclusive and in lieu of all others.

The Company hereby expressly disclaims liability and shall not be responsible for incidental, consequential and contingent damages of any kind or nature, including, without limitation: damages to persons or property, whether a claim for such damages is based upon warranty, contract, tort or otherwise; damages due to or arising out of the loss of data; or lost profits.

The Company shall not be responsible for any damages caused by the presence of error or omission in any so-called "foreign language version" of its manuals, instructions or related materials.

SCM Microsystems, Inc., Retail Brands Group — 20 Carter Drive — Guilford, CT 06437 USA

# Dazzle\*

# USER'S MANUAL



## HOW-TO

### Contact Us

SCM Microsystems, Inc. is a leading supplier of solutions that open the Digital World by enabling people to conveniently access digital content and services. SCM Microsystems advanced silicon solutions, hardware and software enable secure exchange of electronic information for digital applications from e-commerce to broadband content delivery by providing controlled access points to platforms such as PCs, digital camera, and digital television set-top boxes. SCM Microsystems, Inc. serves the retail market through its Dazzle and Microtech product brands. Global headquarters are in Fremont, CA, with European headquarters in Munich, Germany. Operations for the company's Retail Brands Group are in Guilford, CT., U.S.A. Operating hours are Monday through Friday from 8:00 A.M. to 6:00 P.M. (U.S. Standard Time) with Dazzle Technical Support from 8:00 A.M. to 9:00 P.M. (U.S. Standard Time).

**SCM Microsystems, Inc.**  
**Retail Brands Group**  
**20 Carter Drive**  
**Guilford, 06437 USA**

**Tel: 203-315-4200**  
**Fax: 203-483-5106**  
**Website: [www.Scmmicro.com](http://www.Scmmicro.com)**

# Dazzle\*

# USER'S MANUAL

## Copyright Information

The contents of this manual are copyrighted by SCM Microsystems, Inc. and may not be reproduced in whole or in part without written permission of SCM Microsystems, Inc. The same proprietary and copyright notices must be affixed to any permitted copies as were affixed to the original. This exception does not allow copies to be made for others, whether or not sold, but all of the material purchased (with all backup copies) may be sold, given or loaned to another person. Under the law, copying includes translating into another language or format. You may use the software on a single computer owned by you and extra copies cannot be made.

Third-party products mentioned are in most cases for informational purposes only and constitute neither an endorsement nor a recommendation. SCM Microsystems, Inc. assumes no responsibility with regard to the performance or use of the products.

Product specifications and information contained herein are subject to change without notice.

© Copyright 2002 SCM Microsystems, Inc. All rights reserved. Manual version 2.0 — 1.16.02 SYS-JB

## Trademarks

Dazzle and the Dazzle insignia are registered trademarks of SCM Microsystems, Inc.

Digital FlashFilm, Compact FlashFilm, DPA Drives, and the DPA logo are trademarks of SCM Microsystems, Inc.

Microsoft, Windows, the Windows Logo, and MS-DOS are registered trademarks of Microsoft Corporation.

Apple, Macintosh, and Mac OS are registered trademarks of Apple Computer, Inc.

Mac and iMac are trademarks of Apple Computer, Inc.

CompactFlash™ is a trademark of SanDisk Corp. and is licensed royalty-free to the CFA (CompactFlash™ Association) which in turn will license it royalty-free to CFA members.

Memory Stick™ and MagicGate™ are trademarks of Sony Corp Corporation.

Secure Digital is a trademark of the Secure Digital Association.

SmartMedia and SSFDC are trademarks of the Toshiba Corporation.

MultiMediaCard is a trademark of the MultiMediaCard Association.

Microdrive is a trademark of the IBM Corporation.

All other company names and product names are trademarks or registered trademarks of their respective owners.

For more information contact:

SCM Microsystems, Inc.  
Retail Brands Group  
20 Carter Drive  
Guilford, CT 06437 USA

Web site: <http://www.Scmmicro.com>

# Dazzle\*