

## DIGITAL STEEL FIRE & SECURITY SAFE



Read this manual carefully and never store it inside the safe!

# Digital Steel Fire & Security Safe

Model 2208

## PACKAGE CONTENTS

- 1 – Digital Steel Fire & Security Safe
- 1 – Operation Manual
- 4 – “AA” Batteries
- 2 – Entry Keys
- 1 – Emergency Access Key
- 1 – Silica Gel Pack
- 1 – Removable Drawer Tray

**DO NOT RETURN SAFE TO STORE!**  
If there are any missing parts or you have difficulty setting up or operating your safe, please contact our Consumer Assistance Department by telephone:

1-877-354-5457 (USA & Canada)  
Monday–Friday 7am - 5pm PST

## PRODUCT OVERVIEW



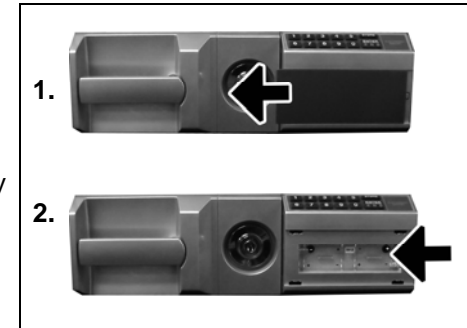
- A - Safe Body
- B - Safe Door
- C - Entry Handle
- D - Keyhole
- E - Digital Keypad
- F - Battery Cover
- G - Door Hinges
- H - Steel Casters

## SETUP & OPERATION

### STEP 1: INSTALL BATTERIES

For your convenience, we have included 4 “AA” Batteries that provide the power for the electronic controls. These must be installed before using your safe.

1. The battery compartment is located behind the dark gray panel under the keypad. To gain access, slide the panel to the left and lift off.
2. Install the 4 “AA” batteries in the battery compartment as illustrated on the inside of the compartment.
3. Re-install battery compartment cover.



### TO REPLACE BATTERIES:

For best results, it is recommended to replace the batteries when they become weak as shown on the Battery Power Level Indicator or at least once a year. **NOTE:** It is NOT RECOMMENDED to use Non-alkaline or rechargeable batteries.

**IMPORTANT:** If the batteries are fully discharged, the digital keypad will not function and the batteries will need to be replaced in order to gain access to the safe.

If the batteries are removed or fail, the keypad memory will NOT be erased and the active programmed code will still work once power has been restored.

## SETUP & OPERATION

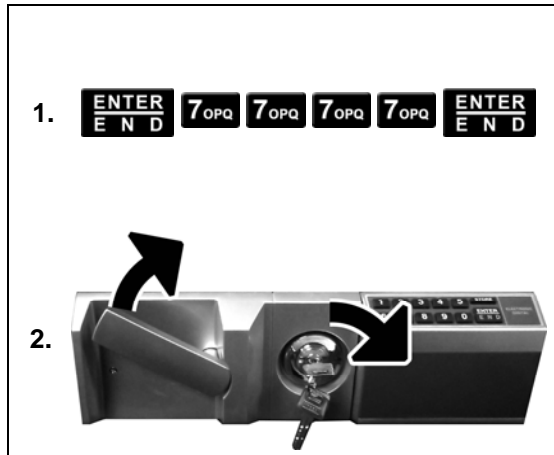
### STEP 2: UNLOCK AND OPEN THE SAFE

Your safe includes 2 Entry keys and 1 Emergency Access key.



1. On the keypad, press “ENTER” then “7 7 7 7” then “ENTER” again. If the correct code has been entered, a musical code will chime and the lock will click open.

2. Insert the “Entry Key” and turn all the way to the right (clockwise). Rotate the handle upwards and pull the door open.



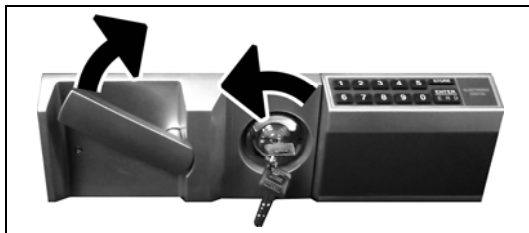
### TO LOCK THE SAFE:

Carefully close the door and rotate the handle downwards. Now turn the key all the way to the left and remove from the safe. The safe is now in locked position. The Entry key and security code will be needed to open.

## EMERGENCY ACCESS KEY

If you have forgotten your personal access code or the electronic lock is not functioning properly, you can use the Emergency Override Key to gain access.

Insert the Emergency Access key into the lock, turn all the way to the left (counterclockwise), and lift handle to open safe.



## SETUP & OPERATION

### STEP 3: PROGRAM NEW USER CODES

1. With the door open, press the small black button located near the inside center of the door.
2. You will hear a musical chime and the small green LED will glow. **NOTE:** If the green LED stops glowing, you need to press the black button and start again.
3. Using the digital keypad, you now have approximately 5 seconds to begin entering a new personal code using a minimum of 4 digits to a maximum of 16 digits.
4. Once you have entered new code, press ENTER key. You will hear a chime indicating new code is now programmed into memory.

Before closing and locking the safe door, you should enter your new code to confirm that it is correct and unlocks the safe.

For future reference, your new code should be recorded and placed in a secure location away from the safe.

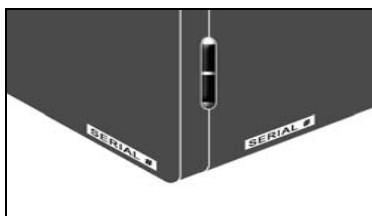
## SECURITY FEATURES

### SECURITY LOCKOUT PERIOD:

If an incorrect code is entered, the LED's will blink and a special two-tone alarm will sound. You should then re-enter the proper code. If an incorrect code is entered 4 times, the safe will enter a security lockout period of about 5 minutes. During this time, you will not be able to enter the safe.

## SAFE SERIAL NUMBER

Whenever contacting our Consumer Assistance Department, you will need to provide them with the serial number of your safe. The serial number tag is located either on the lower right front or lower front right of the safe.



## ORDERING NEW KEYS

If a key is lost or you would like additional keys, you must first contact our Consumer Assistance Department to verify ownership.

You need to provide the following:



- Safe Serial Number
- Number of keys requested
- Name / Address / Telephone
- E-mail address if available

To order by telephone, call us toll-free at: **1-877-354-5457** (USA & Canada)  
Monday - Friday / 7am - 5pm PST

After speaking with a representative you Consumer Assistance Dept. may order keys via mail by sending the LH Licensed Products, Inc., above information along with a 860 East Sandhill Avenue, check or money order for \$12.00 (U.S. Carson, CA 90746 USA funds) to:

We do accept Visa and MasterCard payments for orders received by telephone. Express Delivery available for additional charge.

*Subject to change without prior notification.*

## CONSUMER ASSISTANCE

Contact us by mail at the following address:

Consumer Assistance Dept.  
LH Licensed Products, Inc.,  
860 East Sandhill Avenue,  
Carson, CA 90746 USA

Contact us by telephone (toll-free) at:

**1-877-354-5457**  
(USA & Canada)  
Monday-Friday  
7am - 5pm PST

## LIMITED WARRANTY

LH Licensed Products, Inc., ("LHLP, Inc.") warrants that for a period of seven (7) years from the date of purchase, this product will be free from structural or mechanical defects resulting from materials or workmanship. LHLP, Inc., at its sole option and as the purchaser's sole remedy under this warranty, will repair or replace this product or any component of the product found to be defective during the warranty period. Replacement or repair will be made with a new or remanufactured product or component. If the product is no longer available, replacement may be made with a similar product of equal or greater value. THIS IS YOUR EXCLUSIVE WARRANTY.

This warranty is only valid for the original retail purchaser from the date of initial retail purchase and is not transferable. You must keep the original sales receipt. Proof of purchase is required to obtain warranty service.

LHLP, Inc. dealers, service centers, or retail stores selling this product do not have the right to alter, modify or in any way change the terms and conditions of this warranty.

This warranty does not apply to the finish on the product. This warranty does not cover normal wear and tear of parts or damage resulting from any of the following: negligent use or misuse of the product, use contrary to the operating instructions, disassembly, repair or alteration by anyone other than LHLP, Inc. or an authorized service center, improper installation, or exposure to extremes of heat or humidity. Further, the warranty does not cover Acts of God, such as fire, flood, hurricanes and tornadoes.

LHLP, Inc. shall not be liable for any incidental or consequential damages caused by the breach of any express or implied warranty or otherwise relating to the sale of this product. LHLP, Inc. is also not responsible for: costs associated with removing or installing the product; damage or loss of the contents of the product; nor for the unauthorized removal of the contents; or damages incurred during shipment.

THE ABOVE WARRANTY IS IN LIEU OF ALL OTHER WARRANTIES, EXPRESS OR IMPLIED, INCLUDING ANY WARRANTIES OF MERCHANTABILITY OR FITNESS FOR A PARTICULAR PURPOSE, AND LHLP, INC. DISCLAIMS ANY AND ALL OTHER COVENANTS AND WARRANTIES.

Except to the extent prohibited by applicable law, any implied warranty of merchantability or fitness for a particular purpose is limited in duration to the duration of the above warranty period. Some states, provinces or jurisdictions do not allow the exclusion or limitation of incidental or consequential damages or limitations on how long an implied warranty lasts, so the above limitations or exclusion may not apply to you. This warranty gives you specific legal rights, and you may also have other rights that vary from state to state, or province to province, or jurisdiction to jurisdiction.

## LIFETIME AFTER-FIRE REPLACEMENT GUARANTEE

If this Honeywell UL classified fire resistant product was purchased from LH Licensed Products, Inc. ("LHLP") and is damaged by fire at any time while still owned by you (the original owner), LHLP will ship a free replacement if you send the following to Customer Service, LH Licensed Products, Inc., 860 E. Sandhill Ave., Carson, CA 90746 USA:

1. Your name, mailing address, email address, and phone number with area code;
2. A description of the fire, the model number and a photo of the burned unit, and a copy of the report from the fire department, insurance or police.

Freight on the replacement unit is not included in the guarantee and must be paid by the consumer. If an identical product is no longer available, LHLP will provide a similar unit from its current product line. LHLP is not responsible for any loss or damage to the contents of the safe.

# Honeywell

---

*The Honeywell trademark is used under license from Honeywell International inc. Honeywell International inc. makes no representations or warranties with respect to this product.*