

Utility
Mobile Explorer
V2.1.10

User's Manual

UTT-2100

This document is copyrighted, 2003 - 2010 by ACTi Corporation. All rights are reserved. ACTi Corporation reserves the right to make improvements to the products described in this manual at any time without notice.

No part of this manual may be reproduced, copied, translated or transmitted in any form or by any means without the prior written permission of the original manufacturer. Information provided in this manual is intended to be accurate and reliable. However, the original manufacturer assumes no responsibility for its use, or for any infringements upon the rights of third parties that may result from its use.

All other product names or trademarks are properties of their respective owners.

V2.1 Edition Feb, 2009

Table of Contents

1.	OVERVIEW	5
	Introduction.....	5
	Function Specification	6
	Installation	7
	Overview	8
	Camera Setting Overview	8
	Menu Setting Overview	10
2.	GETTING STARTED	11
	Start Mobile Explorer & Setting	11
	Starting Explorer: Goto Start → Program Files → Mobile Explorer	11
	Select Camera ID	12
	Select Streaming Type	13
	Apply Changes	15
	Setting PTZ	16
	Click PTZ Button	16
	Select PTZ Protocol File	17
	Setup Address IP	18
	Setup Control	19
	Display.....	21
	Display_On_Setting	21
	Display_On_Preview	22
	Connect.....	23
	On Connecting	23
	On Connecting Failed	24
	On Connecting Failed when switch camera	25
	Preview.....	26
	Preview	26
	PTZ On Click Move	27
	Move Up	27
	Move Down	28
	Move Left	29
	Move Right	30
	Move Up Left	31
	Move Up Right	32
	Move Down Left	33
	Move Down Right	34
	Zoom In	35
	Zoom Out	36

3. MENU	37
PTZ Settings	37
PTZ Set Preset	37
PTZ Goto Preset	38
PTZ OSD	39
PTZ OSD On	40
PTZ Speed	41
Quad Setting	42
Quad Switch	42
Audio Setting	43
Audio In	43
Audio Out	44
Variable FPS.....	45
FPS Setting	45
Trigger DO1	46
Trigger DO1	46
Return	47
Return	47
Quit	48
Quit	48

Table of Figures

Figure 1-1 Camera Setting Overview	8
Figure 1-2 Menu Setting Overview	10
Figure 2-1 Start Explorer	11
Figure 2-2 Camera Setting_1	12
Figure 2-3 Camera Setting_2	13
Figure 2-4 NVR configuration	14
Figure 2-5 Apply Changes	15
Figure 2-6 StartUp PTZ	16
Figure 2-7 Select PTZ Protocol File	17
Figure 2-8 Setup Address ID	18
Figure 2-9 Setup Control_1	19
Figure 2-10 Setup Control_2	20
Figure 2-11 Display On Setting	21
Figure 2-12 Display On Preview	22
Figure 2-13 On connecting	23
Figure 2-14 On connecting Failed_1	24
Figure 2-15 On connecting Failed_2	25
Figure 2-16 On Preview	26
Figure 2-17 PTZ Move Up	27
Figure 2-18 PTZ Move Down	28
Figure 2-19 PTZ Move Left	29
Figure 2-20 PTZ Move Right	30
Figure 2-21 PTZ Move Up Left	31
Figure 2-22 PTZ Move Up Right	32
Figure 2-23 PTZ Move Down Left	33
Figure 2-24 PTZ Move Down Right	34
Figure 2-25 PTZ Zoom In	35
Figure 2-26 PTZ Zoom Out	36
Figure 3-1 PTZ Set Preset	37
Figure 3-2 PTZ Goto Preset	38
Figure 3-3 PTZ OSD	39
Figure 3-4 PTZ OSD On	40
Figure 3-5 PTZ Speed	41
Figure 3-6 Quad Switch	42
Figure 3-7 Camera Name	43
Figure 3-8 Audio	44
Figure 3-9 Variable FPS	45
Figure 3-10 Trigger DO1	46
Figure 3-11 Return	47
Figure 3-12 Quit	48

1. Overview

Introduction

Hardware Spec

1. Supported OS:
 - Windows Mobile 5.0
 - Windows Mobile 6.0
 - Pocket PC 2003
 - **Note: We are not going to assure support for all future release of Windows Mobile (such as 6.1, 7.x ...) by now. Otherwise, please contact with ACTi sales for mass installation to check the compatibility with your chosen PDA.**
2. Supported CPU:
 - Intel Xscale Series (624 Mhz recommended)
 - Samsung Series
 - TI OMAP Series
3. Tested Devices
 - HP iPaq HX2790b (recommended)
 - Dopod CHT9100, P800W, D810
 - ETEN M500
 - **Note that PTZ control is implemented with touch-screen control. If your mobile device does not support touch-screen control, then you cannot operate PTZ operation.**
4. Supported Video Profile (benchmarked with HP iPaq HX2790b)
 - **Note that you need to adjust the video profile according to your mobile devices' performance**

Function Specification

Function Spec

1. Add support to 16 channel Video Servers
2. Add support to all Devices, including streaming type TCP 1.0 and TCP 2.0
3. Add support to all product lines, including LPL, EPL and MPL
4. Add support to Quad device. User may control 1, 2, 3, 4, Quad view
5. Add support to Speed Dome PTZ control
6. Add support to on-screen PTZ, 8-directional PT control + zoom in/out
7. Add support to set preset and goto preset PTZ operation
8. Add support to PTZ OSD operations
9. Add support to PTZ speed adjustment
10. Add support to 2-way audio support.
11. Add support to camera name display on screen
12. Add support to event display on screen, including motion detection event and digital input event
13. Add support trigger digital output
14. Add support to switch channel by 1 click.
15. Add streaming type with ACTi NVR

Installation

There are 2 files provided:

1. Mobile-Explorer.exe: This file is used to run under PC, then the Mobile Explorer v2.0 will be installed on the Pocket PC
2. Mobile-Explorer.cab: This file is used to run under Pocket PC. You need to copy this file into Pocket PC, and execute this file under Pocket PC.

Overview

Camera Setting Overview

The screenshot shows a 'Mobile Explorer' window with a status bar at the top displaying signal strength, a speaker icon, the time '12:09', and an 'ok' button. The main area contains various configuration fields and checkboxes, with red numbered callouts (1-24) pointing to specific elements:

- 1: Camera ID (dropdown menu showing '1')
- 2: CameraName (text field containing 'ACM4201')
- 3: Camera IP (text field containing '10.0.1.12')
- 4: Channel NO. (text field containing '1')
- 5: Register Port (text field containing '6000')
- 6: Control Port (text field containing '6001')
- 7: User Name (text field containing 'admin')
- 8: Password (text field containing '*****')
- 9: ☒ Display Camera Name
- 10: ☒ Display MD/DI Event
- 11: ☒ PTZ Setting
- 12: ☒ Quad Video Server
- 13: ☒ Add To Switch Group
- 14: Stream Type (dropdown menu showing '2.0')
- 15: FPS (dropdown menu showing '1')
- 16: Stream ID (text field containing '0')
- 17: Resolution (dropdown menu showing '320x')
- 18: Stream Port (text field containing '6002')
- 19: HTTP Port (text field containing '80')
- 20: BitRate (dropdown menu showing '1M')
- 21: Load Default button
- 22: Apply button
- 23: Play button
- 24: Exit button

At the bottom of the window is a blue bar with a back arrow icon.

Figure 1-1 Camera Setting Overview

1. **Camera ID** : Select the camera ID number. If you are using NVR, this is the camera you will access.
2. **Name** : Define this camera name.
3. **Camera IP** : IP of the camera.
4. **Channel NO.** : Number of Channel, used when accessing a multiple channel video server.
5. **Register Port**: The port used to connect to device. Default 6000.
6. **Control Port** : Default 6001.
7. **User Name** : Name to login this IP camera.
8. **Password** : Password to login this IP camera.

9. **Display Camera Name :** Display camera name on preview.
10. **Display MD/DI Event :** Display Event Detect.
11. **PTZ :** If this IP camera is support PTZ , Enable It.
12. **Quad :** If this IP camera is a quad camera , Enable It.
13. **Add To Switch Group :** ...
14. **Streaming Type :** TCP 1.0, TCP 2.0 and NVR. Use TCP 2.0 for most devices. Use NVR if you are getting video stream through NVR, not directly from device. When you are getting video stream from NVR, NVR will resize the stream to the size you request.
15. **Streaming Port :** Default 6002.
16. **Http Port :** Default 80.
17. **Load Default :** Load default settings.
18. **Apply :** With any change , Please save your change with ‘Apply’, or the changes won’t take effect..
19. **Play :** Preview Video.
20. **Exit :** Leave this Program.

Menu Setting Overview



Figure 1-2 Menu Setting Overview

1. **Pop-Up Menu Button** : Show Menu.
2. **PTZ Set Preset** : Set PTZ Preset.
3. **PTZ Goto Preset** : Go to PTZ Preset.
4. **PTZ OSD** : On Screen Display Menu.
5. **PTZ Speed** : Set Camera Move Speed.
6. **Quad Switch** : Set Quad Monitor.
7. **Audio In** : Turn On/Off Volume.
8. **Audio Out** : Turn On/Off Microphone.
9. **Trigger DO1** : Send DO1 Signal to Device
10. **Return** : Return to Camera Setting Page.
11. **Quit** : Quit this program.

2. Getting Started

Start Mobile Explorer & Setting

Starting Explorer: Goto Start → Program Files → Mobile Explorer



Figure 2-1 Start Explorer

1. **MobileExplorer** : Click here to execute this program.

Select Camera ID

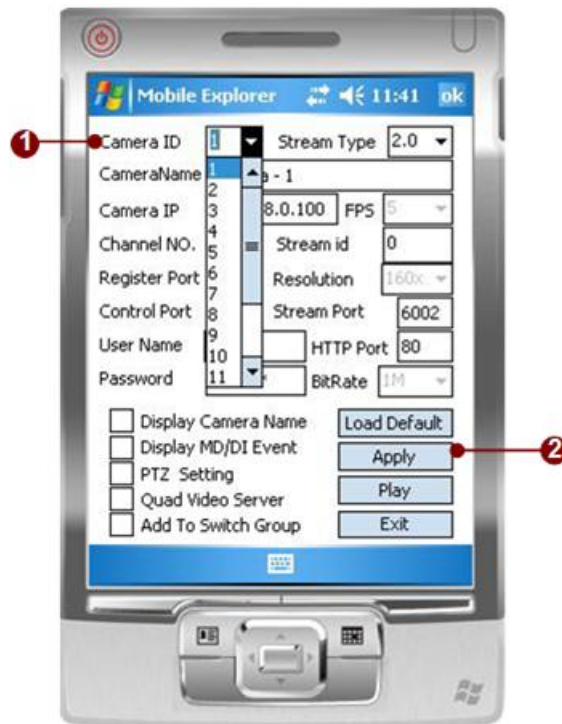


Figure 2-2 Camera Setting_1

1. **CameraID:** Choose a Camera ID.
2. **Apply :** Save this Change.

Select Streaming Type

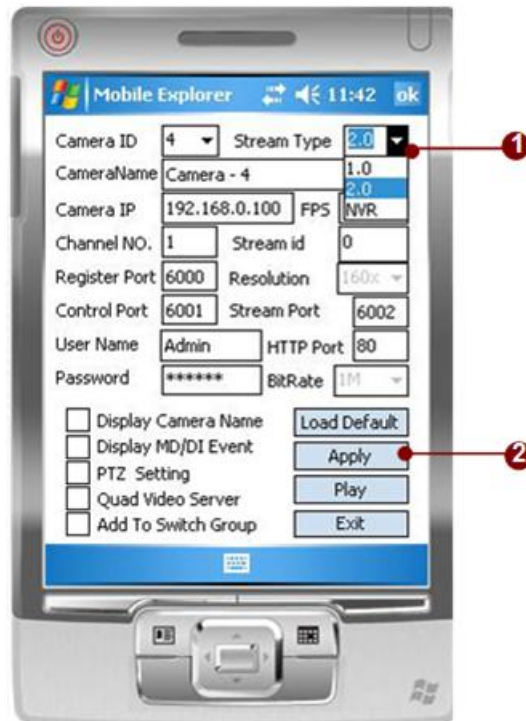


Figure 2-3 Camera Setting_2

- 1 **Streaming Type** : Choose TCP 1.0, TCP 2.0 or NVR
 - 1.1 Set with TCP1.0 and TCP2.0 in the device web configurator, before using TCP1.0 or TCP2.0 as streaming type.
 - 1.2 Set NVR as streaming type
 - 1.2.1 Initialize NVR configuration page to fill NVR login information

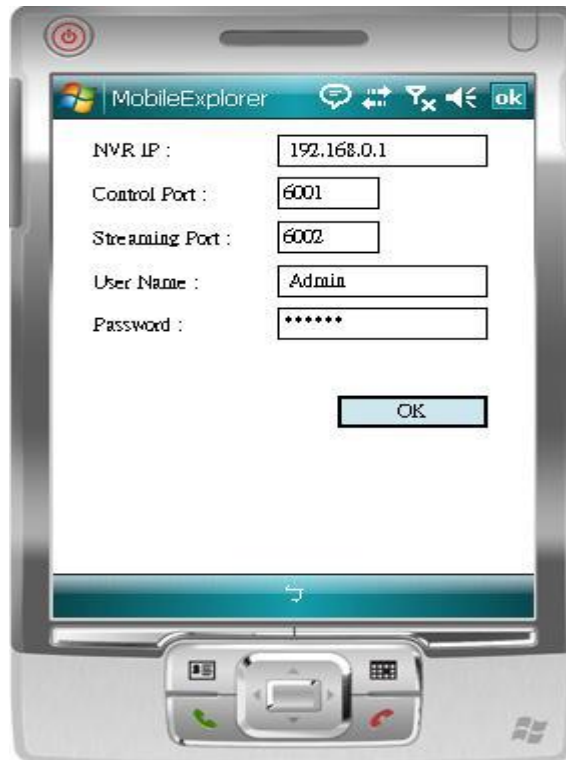


Figure 2-4 NVR configuration

1.2.2 System will also need to configure the following 3 settings in camera setting panel.

1.2.2.1 Resolution: The resolution from NVR

1.2.2.2 BitRate: The bitrate from NVR

1.2.2.3 FPS: The FPS from NVR

2 **Apply** : Save this change.

Apply Changes

The screenshot shows a 'Mobile Explorer' interface with a blue header bar containing a logo, the title 'Mobile Explorer', and a status bar with a signal strength icon, a speaker icon, and the time '12:12'. Below the header, there are several input fields and dropdown menus for camera configuration:

- Camera ID: 1 (dropdown)
- Stream Type: NVR (dropdown)
- CameraName: ACM4201 (text field)
- Camera IP: 10.0.1.12 (text field)
- FPS: 1 (dropdown)
- Channel: (text field)
- Register: (text field)
- Control P: (text field)
- User Name: admin (text field)
- HTTP Port: 80 (text field)
- Password: ***** (text field)
- BitRate: 1M (dropdown)

A pop-up message box is centered on the screen with the text 'Apply Setting' and an 'ok' button in the top right corner. Below the pop-up, there are several checkboxes and buttons:

- ☒ Display Camera Name
- ☒ Display MD/DI Event
- ☒ PTZ Setting
- ☒ Quad Video Server
- ☒ Add To Switch Group
- Buttons: Load Default, Apply, Play, Exit

At the bottom of the screen, there is a blue bar with a white back arrow icon.

Figure 2-5 Apply Changes

Press apply to save all changes. A pop-up message will show in center of screen. Click the “ok” at the top right of the message to close it.

Setting PTZ

Click PTZ Button

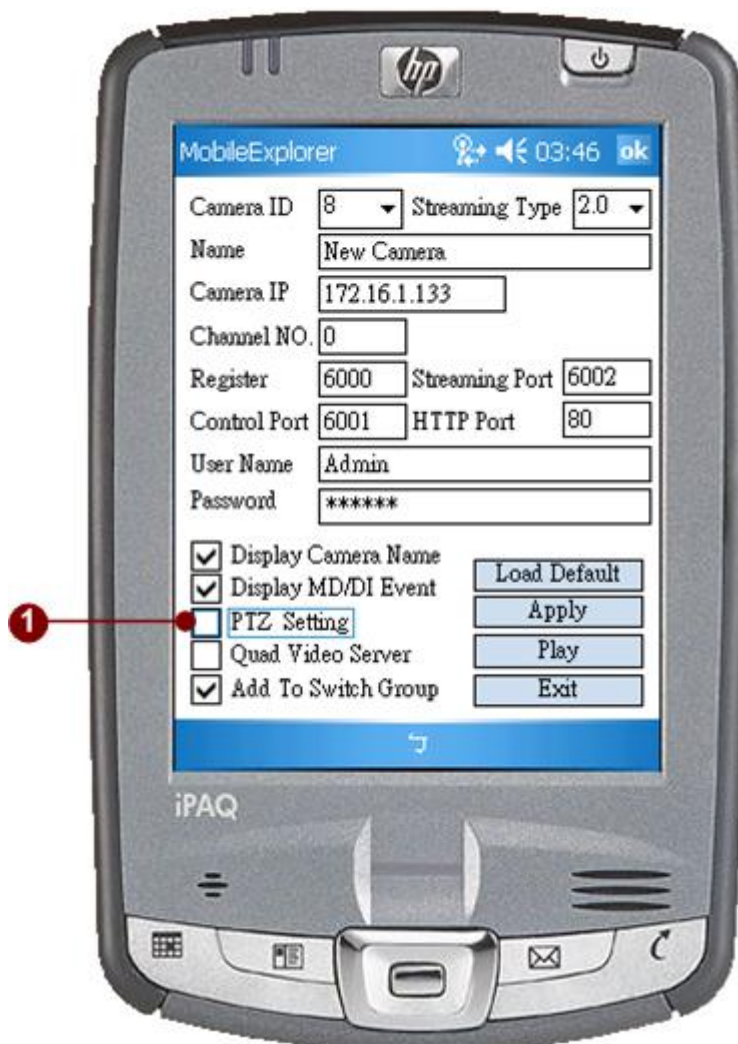


Figure 2-6 StartUp PTZ

1. **PTZ** : Click this button to go to PTZ setting screen.

Select PTZ Protocol File

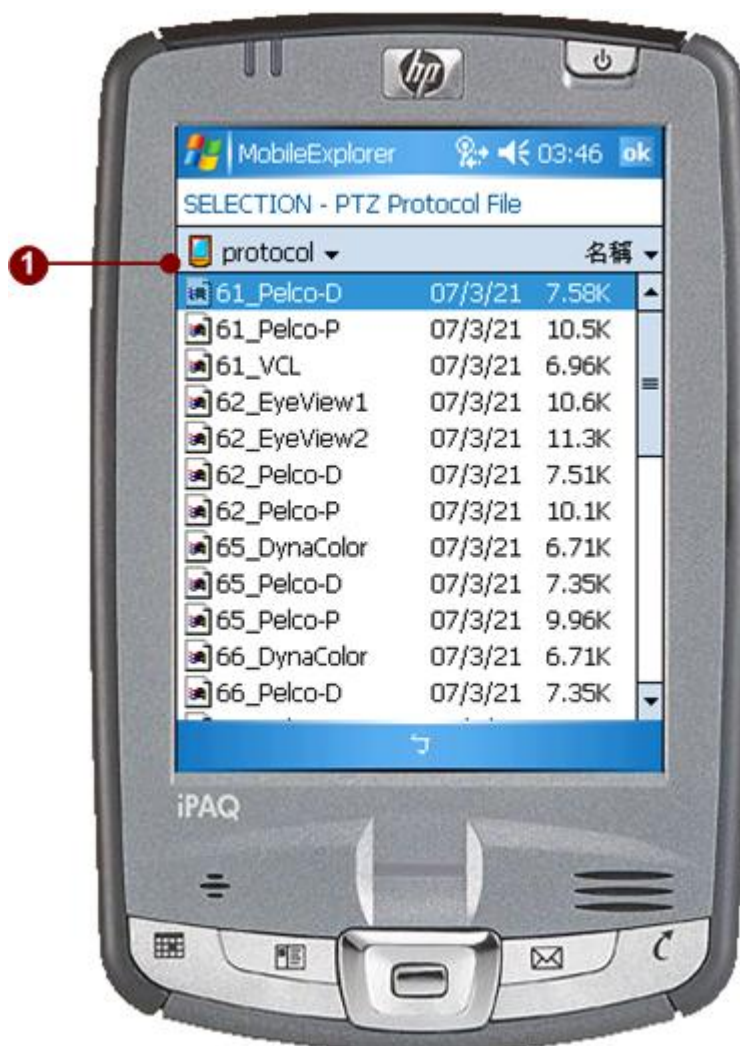


Figure 2-7 Select PTZ Protocol File

1. **Select PTZ protocol files :** Choose a PTZ protocol file that suit your camera.

Setup PTZ Address ID



Figure 2-8 Setup Address ID

1. **Address ID** : Choose Address ID of camera
2. **OK** : Press OK to apply.

Setup Control



Figure 2-9 Setup Control_1

1. **Control** : Choose PTZ Control Parity.



Figure 2-10 Setup Control_2

2. **Baud Rate** : Choose a Baud Rate.

Display

Display_On_Setting



Figure 2-11 Display On Setting

1. **Display Camera Name** : Display camera name on preview.
2. **Display MD/DI Event** : Detect MD/DI event.
3. **Apply** : Save Settings.

Display_On_Preview



Figure 2-12 Display On Preview

1. **Camera Name** : Display Camera Name here.
2. **MD** : This will show on Motion Detection.
3. **DI** : This will show on Digital Input.

Connect

Progress Bar On Connect

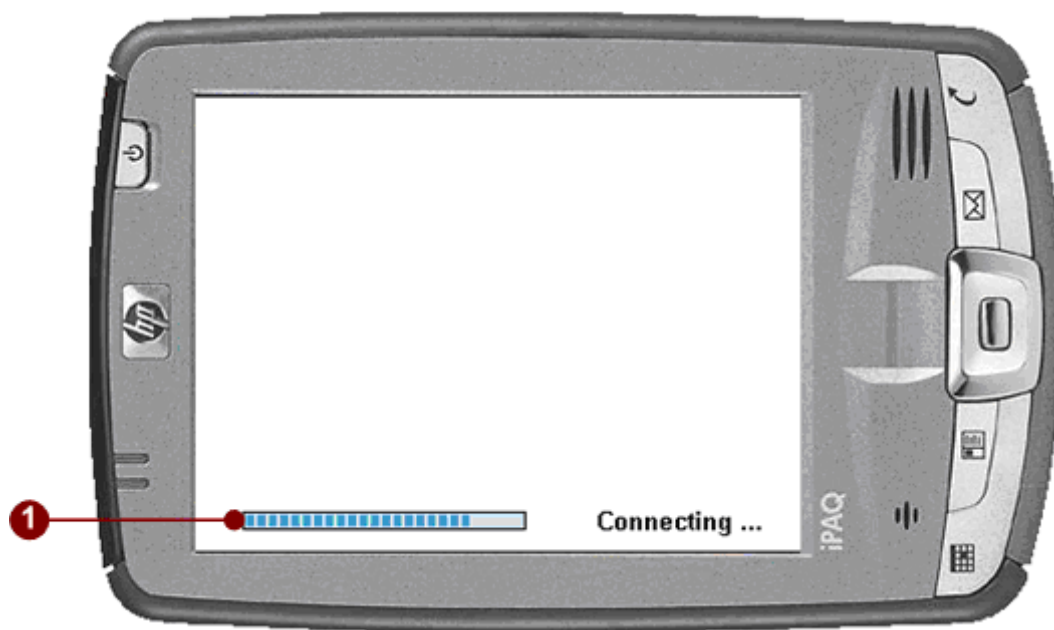


Figure 2-13 On connecting

1. **Connecting** : Connect to the IP camera with preview.

On Connect Failed

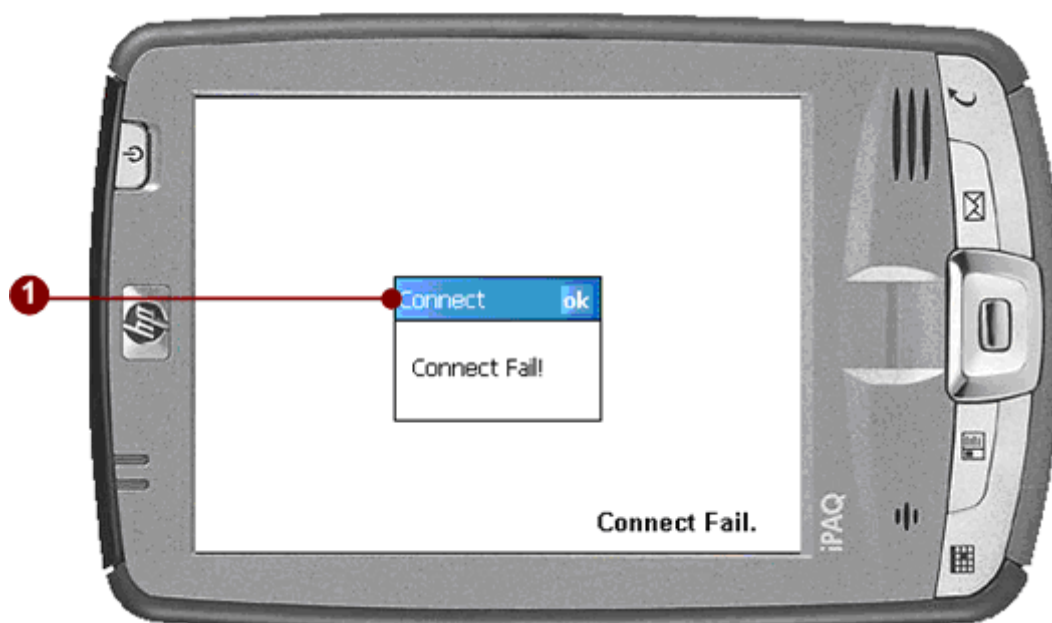


Figure 2-14 On connecting Failed_1

1. **Connecting Failed :** Connect Failed.

On Connecting Failed when switch camera

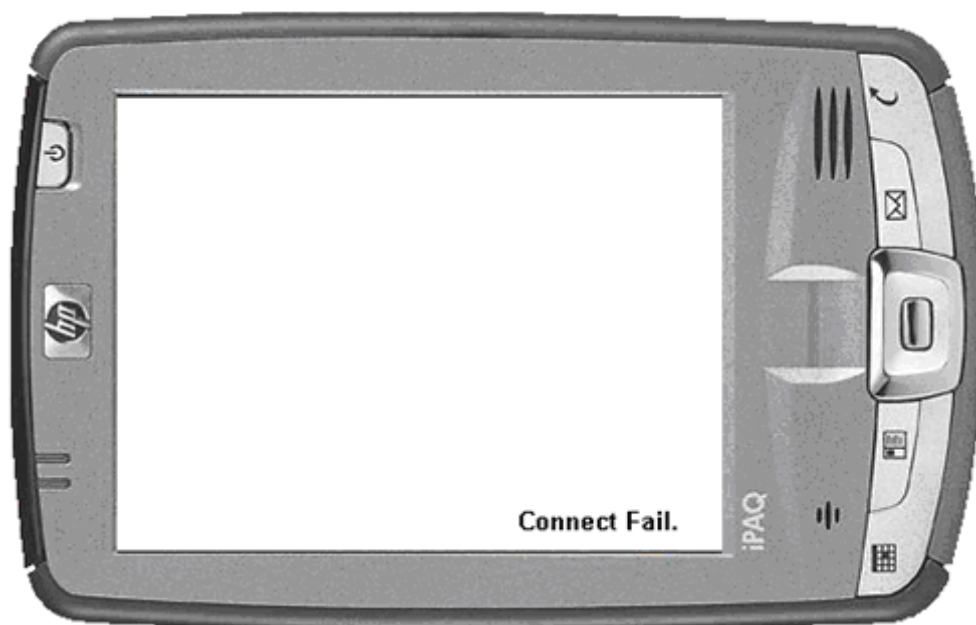


Figure 2-15 On connecting Failed_2

Preview

Preview



Figure 2-16 On Preview

PTZ On Click Move

Move Up



Figure 2-17 PTZ Move Up

1. **Move Up** : Click Here To Move Camera Up.

Move Down



Figure 2-18 PTZ Move Down

2. **Move Down** : Click Here To Move Camera Down.

Move Left



Figure 2-19 PTZ Move Left

3. **Move Left** : Click Here To Move Camera Left.

Move Right

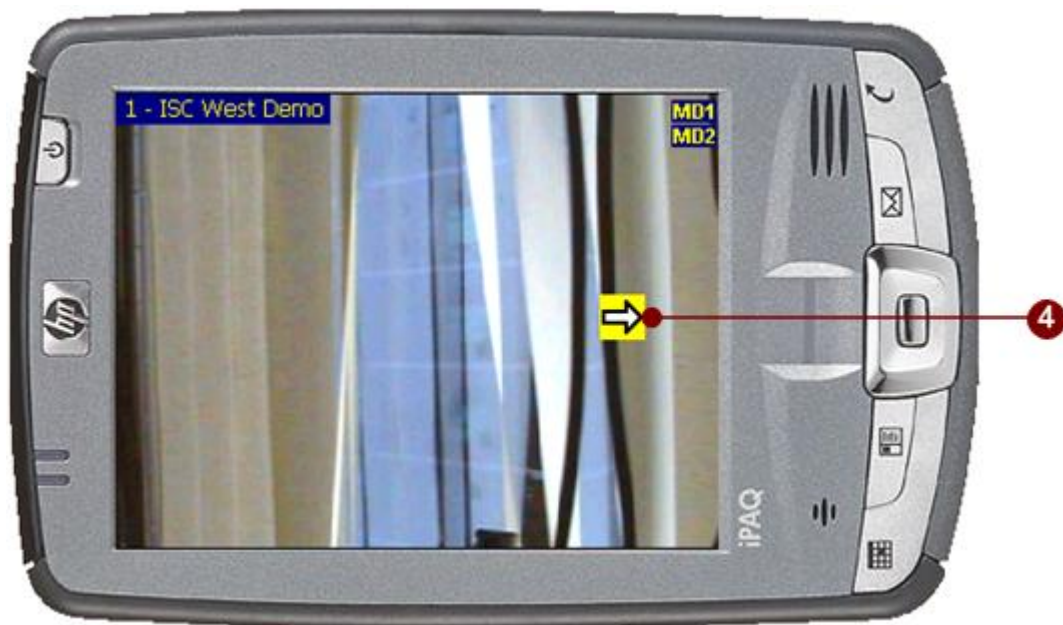


Figure 2-20 PTZ Move Right

4. **Move Right** : Click Here To Move Camera Right.

Move Up Left



Figure 2-21 PTZ Move Up Left

5. **Move Up Left** : Click Here To Move Camera Up Left.

Move Up Right



Figure 2-22 PTZ Move Up Right

6. **Move Up Right** : Click Here To Move Camera Up Right.

Move Down Left



Figure 2-23 PTZ Move Down Left

7. **Move Down Left** : Click Here To Move Camera Down Left.

Move Down Right



Figure 2-24 PTZ Move Down Right

8. **Move Down Right** : Click Here To Move Camera Down Right.

Zoom In



Figure 2-25 PTZ Zoom In

9. **Zoom In :** Click Here To Zoom In.

Zoom Out



Figure 2-26 PTZ Zoom Out

10. **Zoom Out** : Click Here To Zoom Out.

3. Menu

PTZ Settings

PTZ Set Preset

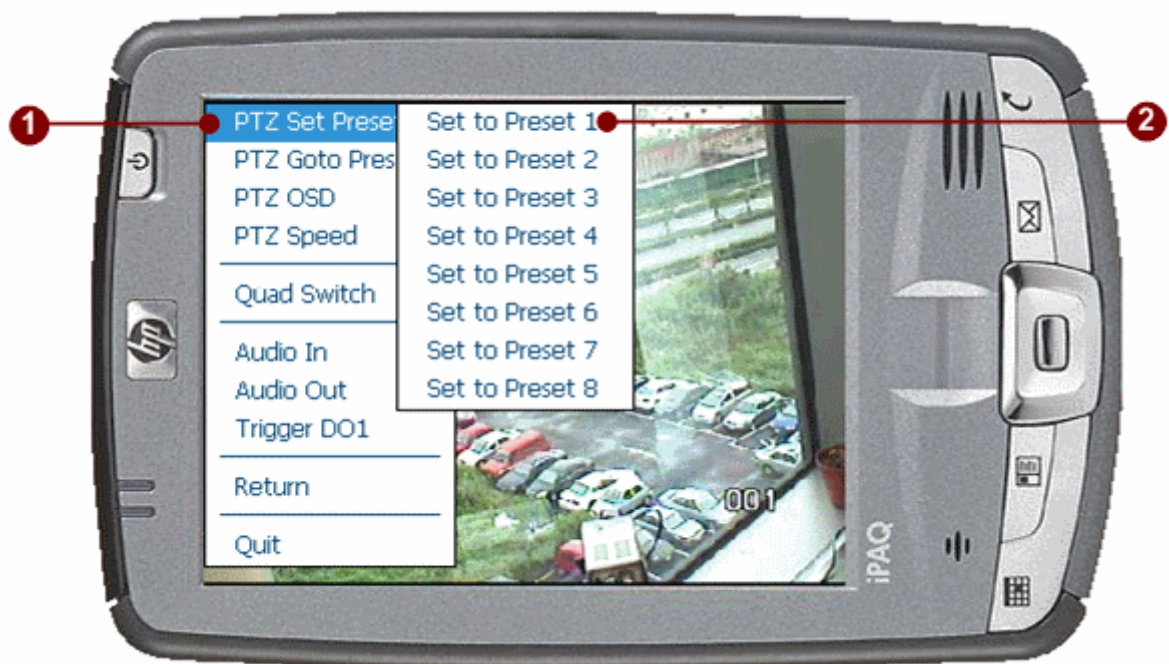


Figure 3-1 PTZ Set Preset

1. **PTZ Set Preset** : User can click this button to set PTZ preset.
2. **Set Preset Location** : Set the PTZ preset.

PTZ Goto Preset

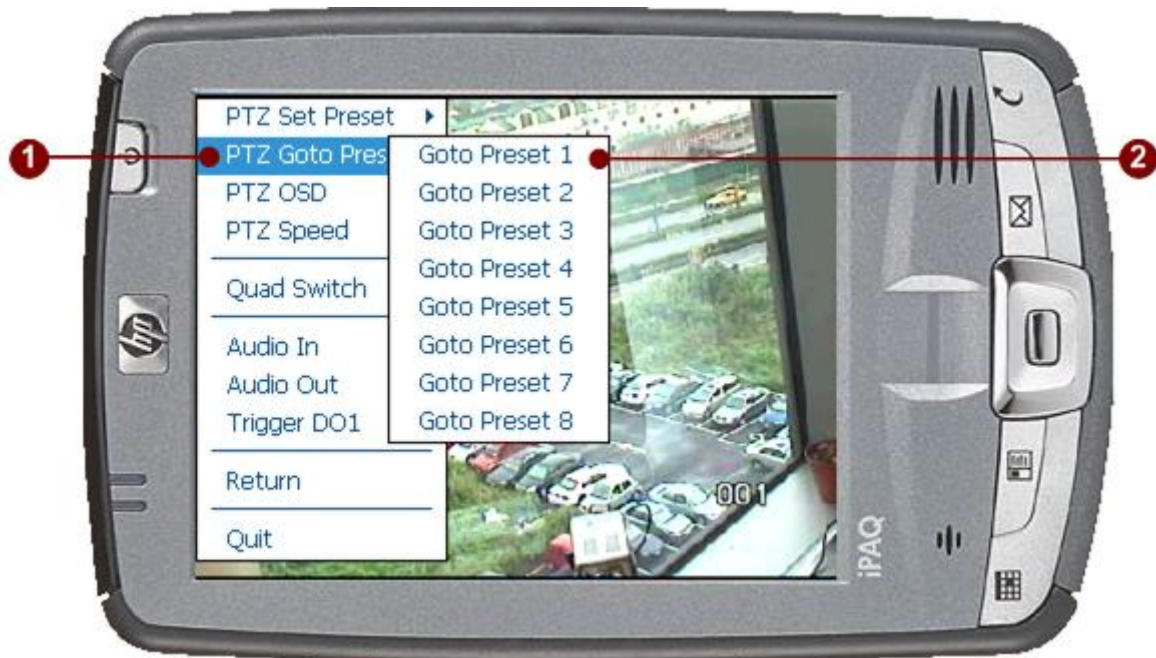


Figure 3-2 PTZ Goto Preset

1. **PTZ Goto Preset** : User can click this button to Goto PTZ preset.
2. **Goto Preset** : Go to PTZ Preset.

PTZ OSD

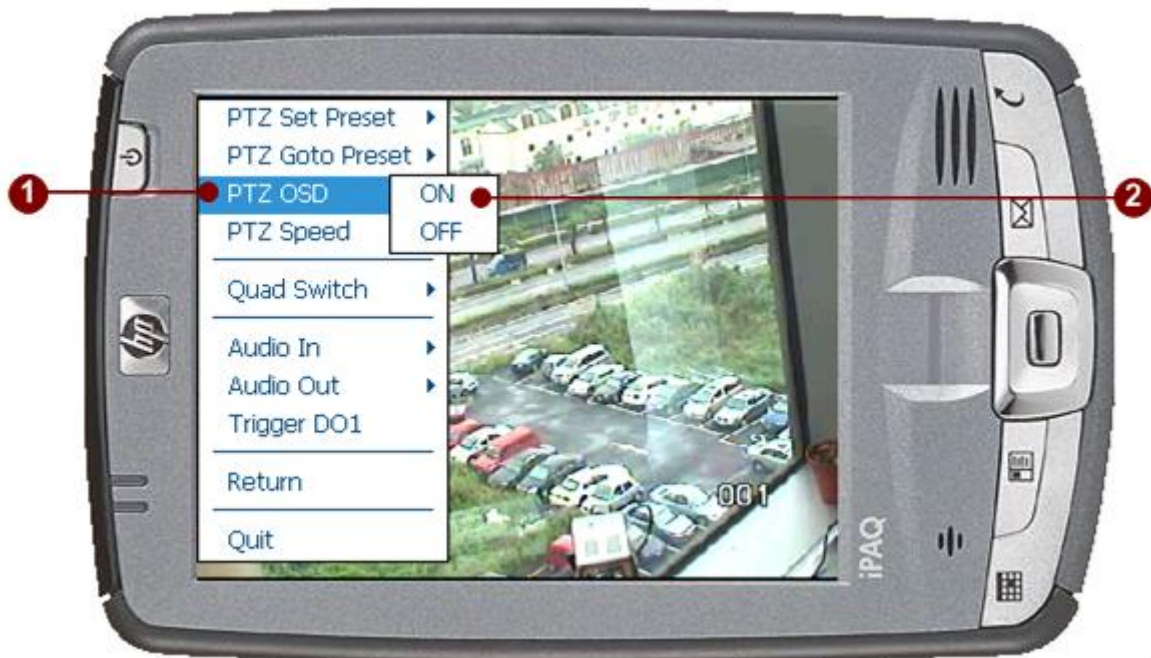


Figure 3-3 PTZ OSD

1. **PTZ OSD** : User can click this button to set PTZ OSD.
2. **On/Off** : Enable/Disable PTZ OSD.

PTZ OSD On



Figure 3-4 PTZ OSD On

1. **PTZ OSD On** : PTZ OSD will show on the screen.

PTZ Speed



Figure 3-5 PTZ Speed

1. **PTZ Speed** : User can click this button to set PTZ Speed.
2. **Speed** : Choose a speed to set this camera.

Quad Setting

Quad Switch



Figure 3-6 Quad Switch

1. **Quad Switch** : User can click this button to set monitor mode.
2. **Monitor** : Select monitor mode of the quad camera.

Audio Setting

Audio In

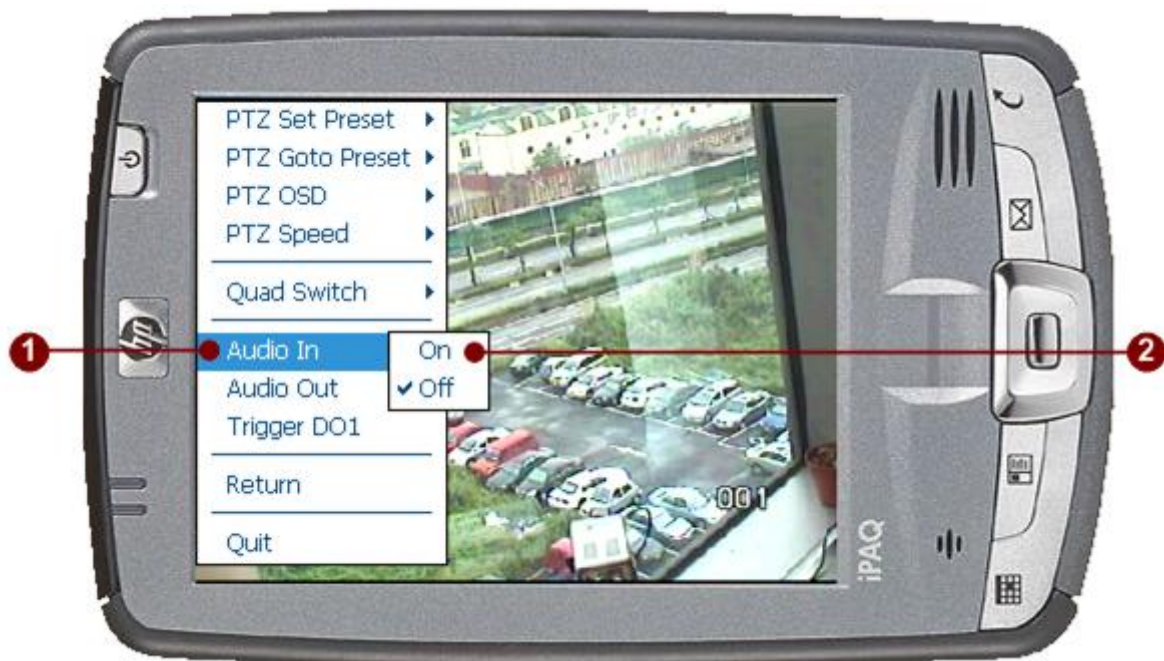


Figure 3-7 Camera Name

1. **Audio In** : User can click this button to set Audio In
2. **On/Off** : Set Audio On/Off

Audio Out



Figure 3-8 Audio

1. **Audio Out** : User can click this button to set Audio Out
2. **On/Off** : Set Audio On/Off

Variable FPS

FPS Setting

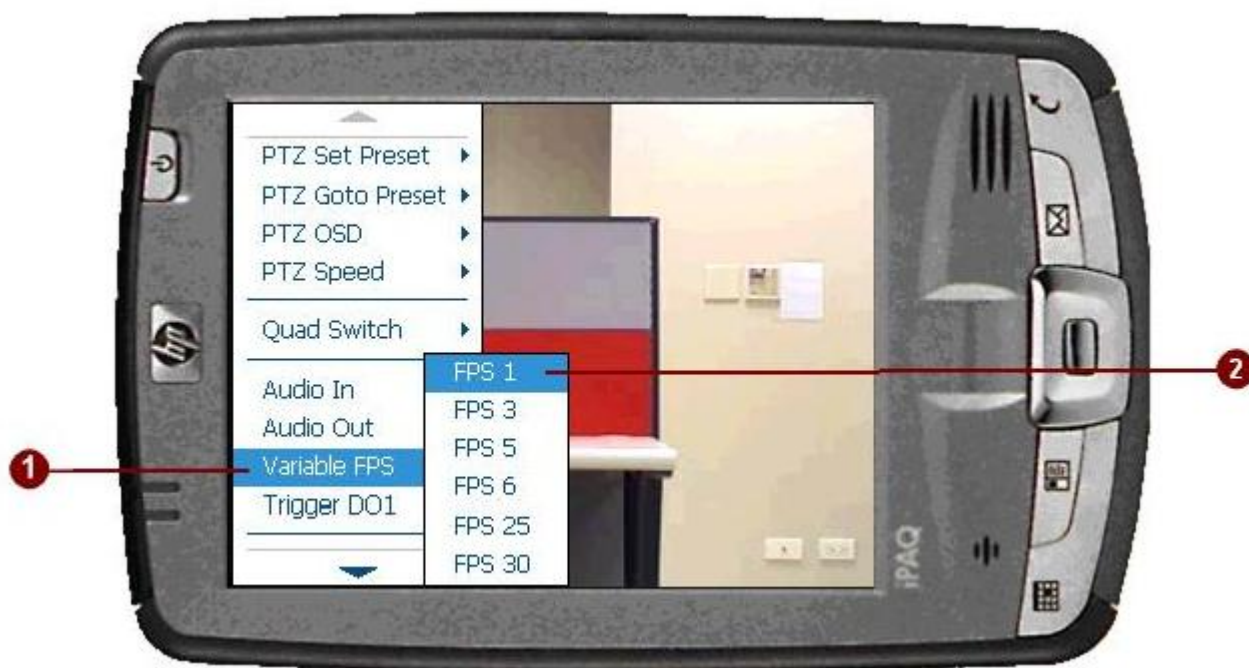


Figure 3-9 Variable FPS

1. **Variable FPS** : User can click this button to set Variable FPS
2. **FPS n** : Set Variable FPS to 1, 3, 5, 25 (PAL Mode), 1, 3, ,6, 30 (NTSC Mode)

Trigger DO1

Trigger DO1



Figure 3-10 Trigger DO1

1. **Trigger DO1** : User can click this button to set Audio Out

Return

Return



Figure 3-11 Return

1. **Return** : Return to preview screen and close menu.

Quit

Quit



Figure 3-12 Quit

1. **Quit** : Quit preview mode and back to camera setting screen.