

# **NOAO CCD MOSAIC IMAGER USER MANUAL**

**(KPNO Mosaic-1 Specific System)**

**Version: 3.0 September 1, 2004**

**Revision by Heidi Schweiker and Buell T. Jannuzi  
of the September 15, 2000 version written by George Jacoby**

With contributions from

Taft Armandroff, Todd Boroson, Jim De Veny, Steve Heathcote,  
Tod Lauer, Bob Marshall, Phil Massey, Rich Reed, Frank Valdes, David Vaughn



**The Veil Nebula (courtesy Travis Rector, Univ of Alaska Anchorage) as observed  
with the WIYN 0.9-m telescope and Mosaic-1**

[send comments on manual to [jannuzi@noao.edu](mailto:jannuzi@noao.edu) or [heidis@noao.edu](mailto:heidis@noao.edu)]

---

# Table of Contents

|  |    |
|--|----|
| 1. Mosaic-1 Overview: At Least Read This!.....                             | 4  |
| 2. Introduction.....   | 8  |
| 2.1. Instrument Overview.....  | 8  |
| 2.2. Philosophy and Structure of Manual.....                               | 8  |
| 2.3. Supplemental Information: Other manuals and Web pages to look at..... | 9  |
| 3. The Mosaic Hardware.....  | 10 |
| 3.1. The Mosaic CCDs.....  | 10 |
| 3.2. The Dewar.....  | 12 |
| 3.3. The Arcon Controllers.....  | 12 |
| 3.4. The CCD Shutter.....  | 13 |
| 3.5. The Filter Track.....   | 14 |
| 3.6. Filters For Mosaic.....   | 14 |
| 3.7. Operation of the Guider TVs.....                                      | 19 |
| 3.8. Correctors.....   | 21 |
| 3.9. Atmospheric Dispersion Corrector (at the 4-m only).....               | 23 |
| 4. Software.....   | 26 |
| 4.1. Logging in and firing up the Arcon/Mosaic software.....               | 26 |
| 4.2. Autologging.....  | 28 |
| 4.3. Restarting the Arcon software.....                                    | 28 |
| 4.4. Restart and Power Cycling of the Arcons and Nexus/Tram box.....       | 28 |
| 4.5. Shutting down the software and Logging out.....                       | 33 |
| 4.6. OBSINIT.....  | 33 |
| 4.7. Re-starting the MSE and related software.....                         | 34 |
| 4.8. Observe - The Only Command You Really Need to Know.....               | 35 |
| 4.9. Exposure Control Commands.....  | 37 |
| 4.10. Other Commands For Taking Data.....                                  | 37 |
| 4.10.1. Taking exposures of specified type.....                            | 37 |
| 4.10.2. Getting more of the same.....                                      | 38 |
| 4.10.3. Taking a test exposure.....  | 38 |
| 4.10.4. Taking your flats the easy way.....                                | 38 |
| 4.10.5. Grids and Dithering.....   | 39 |
| 4.11. Controlling the Data Capture Agent (DCA) on Tan or Emerald.....      | 42 |
| 4.12. Observing in Binned Mode.....  | 44 |
| 5. Evaluating, Recording, and Reducing Mosaic Images.....                  | 47 |
| 5.1. Working with Mosaic Data Files.....                                   | 47 |
| 5.2. Displaying and Evaluating Images at the Telescope.....                | 48 |
| 5.3. Examining the Data.....   | 50 |
| 5.4. Recording Mosaic Data.....  | 52 |
| 5.5. The Reduction of Mosaic Images.....                                   | 53 |
| 5.6. Calibration Data to Obtain At the Telescope.....                      | 53 |
| 5.7. Basic Reductions.....   | 54 |
| 5.8. The Variable Pixel Scale and Zero Point Uniformity.....               | 54 |
| 5.9. Stacking Mosaic Images.....   | 55 |
| 5.10. A Simplified Summary of the Processing Steps.....                    | 58 |
| 6. Appendix A: Miscellaneous Software Commands.....                        | 59 |
| 7. Appendix B: Differential Refraction.....                                | 61 |

|   |    |
|---|----|
| 8. Appendix C: Issues About Photometry .....                          | 62 |
| 9. Appendix D: Flat-Field Exposures .....                             | 63 |
| 10. Appendix E: Frequently Encountered Problems (FEP) .....           | 64 |
| 10.1. Mysterious messages appear and pictures cannot be taken.....    | 64 |
| 10.2. Data Doesn't Show Up on Reduction Computer. ....                | 64 |
| 10.3. "Echo" Images in adjacent CCD: "Cross-Talk".....                | 64 |
| 10.4. Bad Rows in All CCDs.....                                       | 65 |
| 10.5. Calibrating the CCD Voltages at the Start of a Block .....      | 66 |
| 10.6. The ADC does not seem to be reacting fast enough!.....          | 66 |
| 10.7. "Warning: 'ared' package not defined" when starting ARCONS..... | 67 |
| 11. Appendix F: Rarely Encountered Problems .....                     | 68 |
| 11.1. "Good" Error Messages.....                                      | 68 |
| 11.2. "New" Errors as of September 2000 .....                         | 68 |
| 11.3. Image display fails to complete automatically.....              | 69 |

---

# 1. Mosaic-1 Overview: At Least Read This!

The Mosaic-1 and Mosaic-2 imagers are wide-field optical imaging cameras built for use at Kitt Peak National Observatory and Cerro Tololo Inter-American Observatory. These two cameras are nearly identical, but do differ in some respects. The operation of each of these cameras (Mosaic-1 at the KPNO 4m and WIYN 0.9m; Mosaic-2 at the CTIO 4m) also differ in some specifics. This manual contains much information that is common to both cameras, but is focused on the specifics of using the Mosaic-1 at the KPNO 4m and WIYN 0.9m

---

## General Characteristics:

|  |  |
|--|--|
| Arrays:                                | 8 2048x4096 SITE CCDs; thinned , science grade<br>8192 x 8192 @ 16 bits, plus header, overscan:~135 Mbytes   |
| Pixels size:                           | 15-um (0.26"/pixel at the 4-m; 0.43"/pixel at the 0.9-m)   |
| Read-noise:                            | ~6 e <sup>-</sup>  |
| DQE:                                   | 86% peak at 6500Å (average for 8 CCDs; see also Figure 3.1.2)  |
| Dark-current:                          | ~5 e <sup>-</sup> /pixel/hr  |
| Read-out time<br>(including overhead): | 2 minutes 34 seconds (1 min 6 sec when binned 2x2)   |
| CCD Gaps:                              | ~0.7 mm (~50 pixels) in rows; ~0.5 mm (~35 pixels) in columns  |
| Cosmetics:                             | Good to excellent: typically 2 bad columns per CCD, but many 2-8 pixel areas of 5% variation (flatfield completely) and some very large areas of 10% variations that all flatfield to <0.5%  |
| Filters:                               | 5.75"x5.75"; parfocal,34 filters now available at KPNO (a list of all available filters can be found here <a href="http://www.noao.edu/kpno/mosaic/filters/filters.html">http://www.noao.edu/kpno/mosaic/filters/filters.html</a> ) (UBVRI; see Sec 2.6) |
| Saturation:                            | Typically, linear to 0.1% to 70,000 e <sup>-</sup>   |
| Gain:                                  | ~3 e <sup>-</sup> /ADU   |

### KPNO Mayall 4-Meter Parameters:

Count Rates: At UBVRI=20th mag: U: 35; B:330; V: 340; R: 410; I: 225 e-  
/sec  
FOV: 36'x36', XIMTOOL Orientation: North- left, East-down  
Scale: 0.26"/pixel at center; decreases quadratically by 6.5% out to  
corners  
Image quality: PSF quite constant across the FOV, but ~6% larger in linear  
scale at the corners  
Artifacts: Faint ~2600-pixel wide image of the pupil in each image (~1%  
at UI, 0.8% at BVR, 2-4% in narrow-band filters).  
Typical focus: -9900 at ~17C (-10200 for U; approximately -300 unit offset  
for U-band); change with temperature: -90 units per degree C  
ADC: Atmospheric Dispersion Correction: For broad-band filters,  
use ADC in "track mode" with appropriate filter selected. For  
flat-fields and narrow-band exposures, use the "null" position  
or closest broad-band filter mode in wavelength.

### WIYN 0.9-Meter (formerly KPNO 0.9m) Parameters:

Count Rates: At UBVRI=20th mag: U: 2; B: 14; V: 15; R: 16; I: 9 e-/sec  
FOV: 59'x59', XIMTOOL Orientation: North-left, East-up  
Scale: 0.43"/pixel  
Image quality: PSF fairly constant across the field, but a 20-30 focus unit tilt  
is present.  
Typical focus: 31000 at 10C (31050 for U); change with temperature +80 units  
per degree C.

**Data Acquisition:** *Acquisition* commands are given on computers named **rush** (at KP4m) or **rust** (at W0.9m). These computers are currently accessed by the user via a VNC display on **tan** (at KP4m) and **emerald** (at W0.9m).

**Data Reduction:** At the KP4m images can be inspected and processed using the computers **tan** or **nutmeg**. At the W0.9m this work is done on **emerald**.

## All the Commands That Are Likely To Be Needed

### Observing Commands -- on Rush (at KP4m) or Rust (W0.9m)

|                  |  |
|------------------|--|
| <b>observe</b>   | take one or more exposures prompting for the exposure type                       |
| <b>doobs</b>     | a script which takes flats/objects for a list of filters                         |
| <b>mosdither</b> | takes (typically 5) dithered images in a single filter to fill the gaps in array |
| <b>more</b>      | take more exposures just like the last one                                       |
| <b>test</b>      | take a test exposure. The output image, test, is overwritten each time           |
| <b>object</b>    | take one or more object exposures  |
| <b>zero</b>      | take one or more zero (bias) exposures   |
| <b>dark</b>      | take one or more dark exposures  |
| <b>dflat</b>     | take one or more dome flats  |
| <b>sflat</b>     | take one or more sky flats   |
| <b>focus</b>     | take a focus frame   |
| <b>recover</b>   | recover data (if possible) following a crash of the DCA during readout           |

### Exposure Control Commands

|                 |   |
|-----------------|---|
| <b>pause</b>    | pause exposure (e.g. clouds) [ <b>do not ABORT or STOP from within pause!</b> ] |
| <b>resume</b>   | Resume a paused exposure [ <b>then ABORT or STOP if necessary!</b> ]            |
| <b>tchange</b>  | increase or decrease the exposure time  |
| <b>stop</b>     | stop an exposure (and sequence of exposures) reading out the detector           |
| <b>abort</b>    | abort an exposure (or sequence) discarding the data                             |
| <b>pictitle</b> | Change the title of the picture   |

### Quick-look and Taping Commands -- on Tan (at KP4m) or Emerald (W0.9m)

|                   |  |
|-------------------|--|
| <b>Mscdisplay</b> | display an entire mosaic frame                             |
| <b>Mscexamine</b> | general tool for examining images                          |
| <b>Mscwfits</b>   | write mosaic frames to tape in multi-extension FITS format |

**Caution:** Tape your data as you go; DLT-7000 (~250 images/tape) and Exabyte drives (~35 images/tape), and DDS-4 DAT drives (~145 images/tape) are available. On **nutmeg** (KP4m) it takes the following times to write/read images using mscwfits: DDS-4 DAT 49/54 sec, Exabyte 1:29/1:14, DLT (no compression) 0:37/1:02). DVD writer (4 GBytes) and CD/RW are also available. Please be off the computer by noon of your last day!

You can purchase DLT, DAT and Exabyte tapes as well as DVDs (DVD-R 4x) at the Kitt Peak Administration office, but bringing your own is cheaper.

**Calibration data:**

If you wish, take darks matching expected exposure times, although we have not measured significant dark current with the current version of the instrument.

Take dome flats and/or twilight flats (night sky flats work even better!)

Take zeroes (i.e., biases) -- Darken the dome for darks and zeroes!

---

## 2. Introduction

---

### 2.1. Instrument Overview

The NOAO CCD Mosaic cameras are wide field imagers having 8192 x 8192 pixels. At the KPNO 4-m, where the pixels are 0.26" on the sky, this provides a field of view of 36 arcmin on a side. At the WIYN 0.9-m, where the pixels are 0.43" on the sky, the field of view is 59 arcmin on a side.

Each unbinned exposure with the camera requires 2:34 of over-head (including exposure preparation time and CCD readout). When used with binning, the readout time for MOSAIC is reduced but the preparation overhead remains. When used with 2x2 binning the total exposure over-head is 1:06. The CCDs are read out through 4 Arcon controllers to a data taking computer (known as **rush** at the 4-m and **rust** at the 0.9-m), which serves as an intermediary data gateway. The pictures really end up on a faster computer (known as **emerald** at the W0.9-m and **tan** at the KP4-m) where you can display and examine the data, perform full reductions, and tape the data much more effectively. **Rush** and **Rust** should be used only to do the minimal work required to take observations because the data rate through it is tremendous and nearly pegs the CPU at 100%.

Pictures are 135 Mbytes each. A typical night of ~70 pictures produces about 10 Gbytes. Be aware that processing this data, even just reading it, is a major task for many computing systems. We recommend using a DDS-4 or DLT tape; however, we provide Exabyte 820 (8505XL compatible) drives for those who do not have DDS-4s or DLTs. Provide enough time to tape your data each night. With the Exabytes, an image takes ~1min20sec to tape using **tan**, so 70 pictures will take nearly 2 hours even without a verification pass. We also offer DDS-4 DAT, DVD and CD/RW at both telescopes.

The Mosaic cameras require large (5.75 inch) filters to avoid vignetting. We can provide an adapter for 4 inch filters, but using them makes poor use of the Mosaic's wide-field.

### 2.2. Philosophy and Structure of Manual

This manual was originally intended for an observer planning to use either of the NOAO CCD Mosaic imagers. It is not intended to serve as a hardware or software reference document describing the inner working of the Mosaics, although some details at that level are present to help the observer plan observing strategies. Also, we assume that the observer is already familiar with CCD cameras, observations, and reducing data. The current version is Mosaic-1 centric, i.e. focused on the Mosaic camera available at KPNO.



Two very brief summary pages are at the front of this manual. If you've read this far, and don't plan to read any further, be sure you understand those 2 pages.

Development of the Mosaic systems is a continuing process, although only very minor adjustments are being made at this time. Throughout the lifetime of the instruments, filters will be added, old ones replaced, and software enhanced. This manual represents the status as of the date on the cover page. We expect to revise the manual occasionally to include information gained during engineering runs, as well as to reflect new filters.

This manual also appears as an HTML document on the NOAO WWW pages (<http://www.noao.edu/kpno/manuals>). It can be downloaded as a PDF file via anonymous FTP to [ftp.noao.edu](ftp://ftp.noao.edu), cd [kpno/manuals](ftp://ftp.noao.edu/kpno/manuals), binary, get mosaic\_man.pdf. We welcome suggestions for improving this manual.

### **2.3. Supplemental Information: Other manuals and Web pages to look at**

Other useful information regarding the use of the Mosaics, CCDs, and observing and reduction software can be found at:

[NOAO Mosaic Camera web pages](http://www.noao.edu/noao/mosaic) (<http://www.noao.edu/noao/mosaic>)

[Direct Imaging Manual](http://www.noao.edu/kpno/manuals/dim/dim.html) (<http://www.noao.edu/kpno/manuals/dim/dim.html>)

[NOAO/KPNO Mosaic Web Page](http://www.noao.edu/kpno/mosaic/mosaic.html) (<http://www.noao.edu/kpno/mosaic/mosaic.html>)

[NOAO/CTIO Mosaic Web Pages](http://www.noao.edu/ctio/mosaic) (<http://www.noao.edu/ctio/mosaic>)

[WIYN 0.9-m User's Manual](http://www.noao.edu/0.9m/manual.html) (<http://www.noao.edu/0.9m/manual.html>)

[Buell Jannuzi's Reduction Guide](http://www.noao.edu/noao/naodeep/ReductionOpt/frames.html)

(<http://www.noao.edu/noao/naodeep/ReductionOpt/frames.html>)

#### **Various Publications (SPIE, ADASS, ?)**

[Mosaic Data Handling System](http://www.noao.edu/noao/meetings/spie98/mdhs.ps) (Valdes 1998, SPIE 3355, 497)  
(<http://www.noao.edu/noao/meetings/spie98/mdhs.ps>)

[CCD Detector upgrade for NOAO's 8192 x 8192 Mosaic](http://www.noao.edu/noao/meetings/spie98/wolfe.html) (Wolfe 1998, SPIE 3355, 487)  
(<http://www.noao.edu/noao/meetings/spie98/wolfe.html>)

[What is better than an 8K x 8K Mosaic?](http://www.noao.edu/noao/meetings/spie98/muller.ps) (Muller 1998, SPIE 3355, 577)  
(<http://www.noao.edu/noao/meetings/spie98/muller.ps>)

[A New Wide Field Corrector for the Kitt Peak Mayall 4-m](http://www.noao.edu/noao/meetings/spie98/jacoby.ps) (Jacoby 1998, SPIE 3355, 721)  
(<http://www.noao.edu/noao/meetings/spie98/jacoby.ps>)

---

## 3. The Mosaic Hardware

---

### 3.1. The Mosaic CCDs

The Mosaic Imager features eight 2048 (serial or pixels/row) x 4096 (parallel or pixels/column) 15  $\mu\text{m}$  pixel CCDs arranged as an 8192 x 8192 pixel detector. The Mosaic-1 CCDs are read out through a single amplifier per chip simultaneously to 8 controller inputs (on 4 Arcon controllers). For Mosaic-2 (at CTIO) 16 amplifiers, 2 per CCD, are working and can be readout simultaneously. Unfortunately, two of the CCDs in Mosaic-1 only have one working amplifier, limiting Mosaic-1 to work in 8 channel mode. The resulting mosaic array is a square about 5 inches on an edge. The gaps between CCDs are about 0.7 mm in the row direction and 0.5 mm in the column direction. [See Figure 3.1.1 showing an image labeled with chip numbers.] The Mosaic Imager is populated with thinned, AR coated SITE CCDs. These chips have only minor flaws that have little effect on their scientific performance, but they do require careful calibration to attain excellent flat-fielded images.

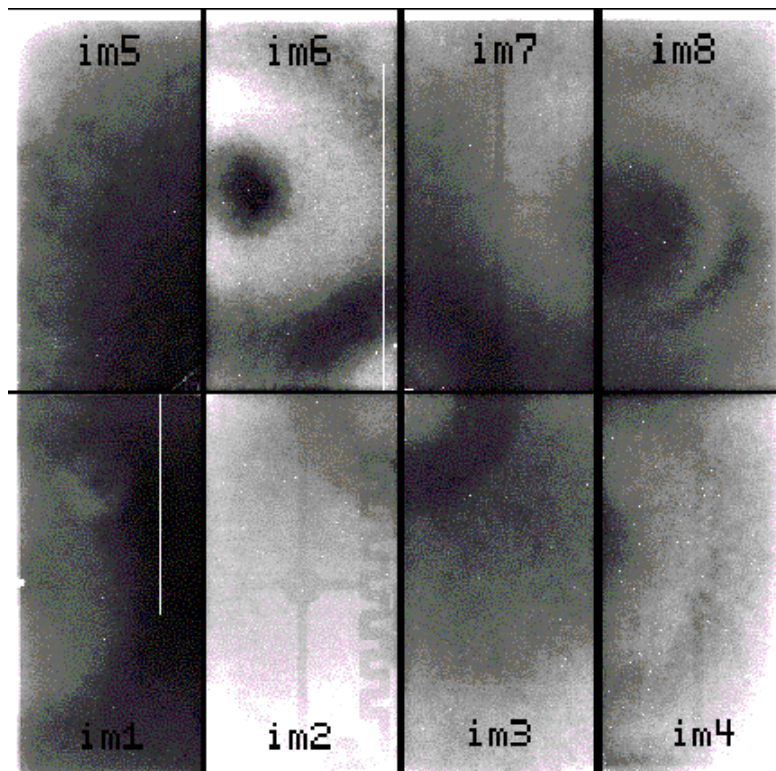


Figure 3.1.1: A Flat-field (R band) map of the CCDs in the Mosaic with their 'extensions' (im1, im2, im3, ?) as used in the IRAF nomenclature (see section 5).

Figure 3.1.2 shows the average QE for the 8 CCDs. Individual CCDs deviate from this curve as shown in Figure 3.1.3.

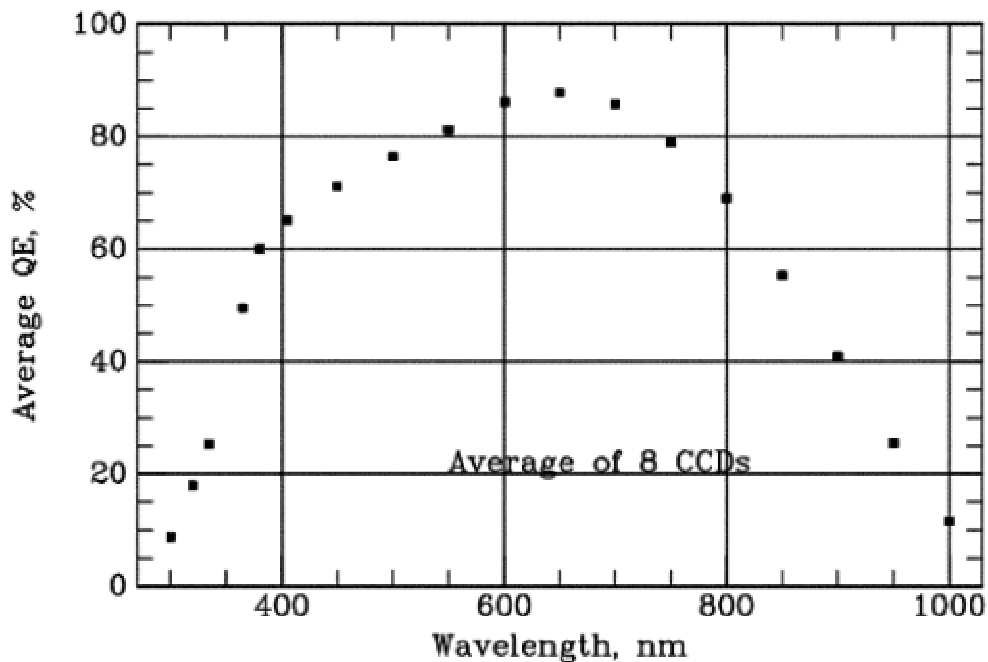


Figure 3.1.2: The average QE for the 8 SITE CCDs in Mosaic I.

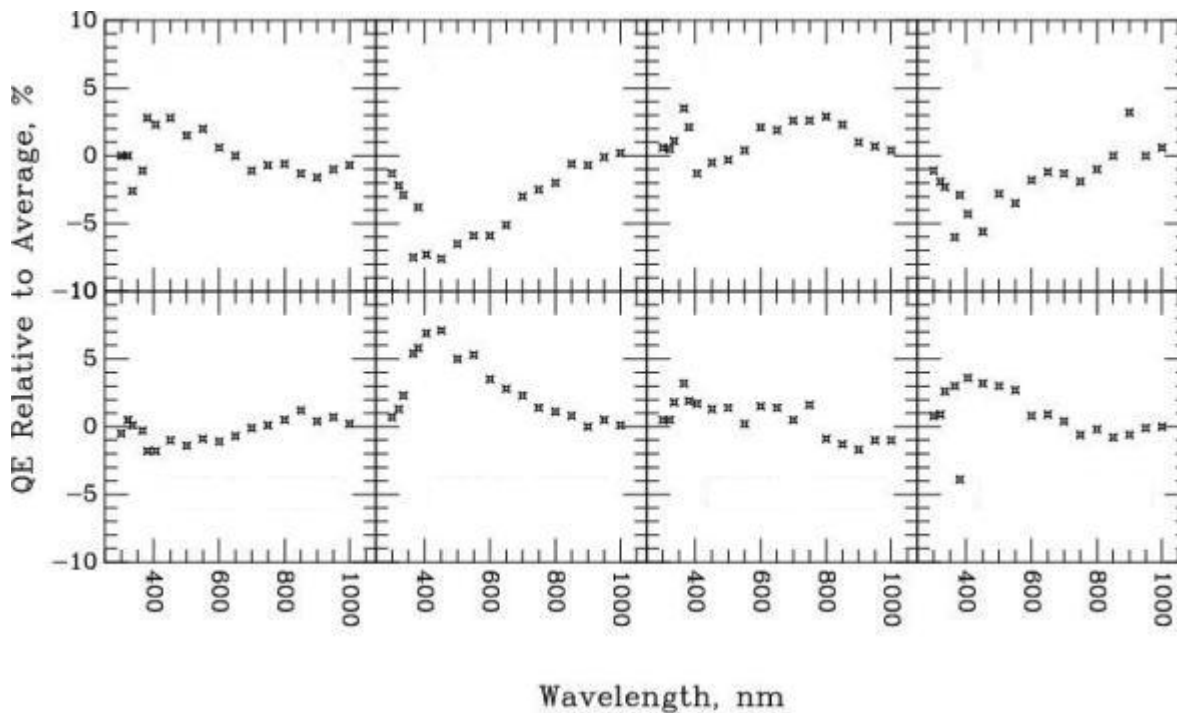


Figure 3.1.3: The QE differences relative to the average for the 8 SITE CCDs in Mosaic I. Also shown are the readnoise (RN) and gain (GN) values for each CCD.

## 3.2. The Dewar

The Mosaic dewar is a large (6.3 liter) vacuum vessel radiatively coupled to the CCD mount. It is the large round cylindrical object in the center of Figure 3.2.1. The hold time of the dewar is 17 hours. It is filled by an observing technician at the start and end of each night.

Several temperatures within the dewar are monitored and displayed in the Mosaic Graphical User Interface (GUI). The CCDs should be between -83 and -98 C. The dewar tank is cooled to -166 C or cooler. A good way to detect the exhaustion of LN2 is the warming of the 'fill neck' temperature, which is normally near 0 C. If this temperature begins to rise much above zero or any of the temperature boxes turn and stay red, call for assistance to have the dewar filled. Mosaic automatically e-mails mountain personnel if various temperatures rise to levels that indicate a warm-up.

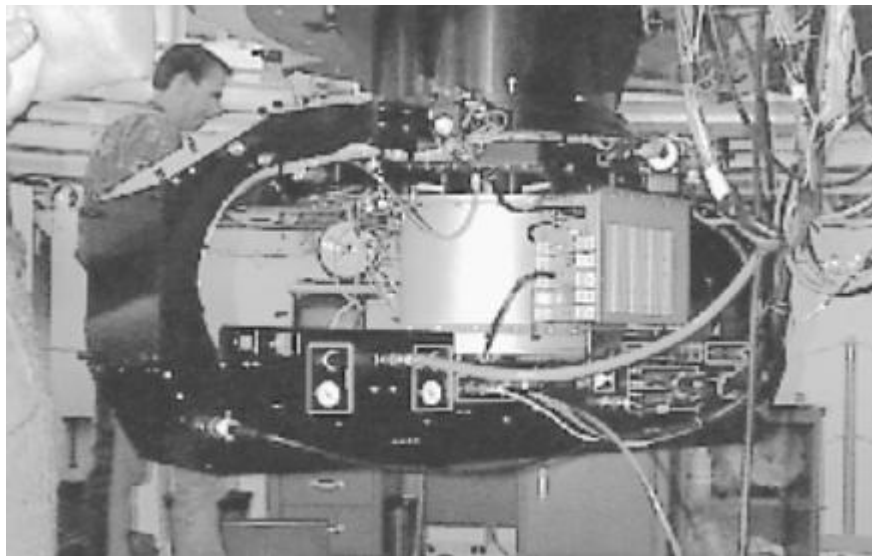


Figure 3.2.1: The Mosaic system mounted at the back of the 0.9-m telescope. The dewar containing the 8 CCDs is the silvery, cylindrical object in the middle. It is surrounded by the filter track, which is housed in the large black oval that extends horizontally across most of the picture.

## 3.3. The Arcon Controllers

The eight CCDs are read out through four Arcon controllers. These controllers run at 100 kpix/sec per CCD, yielding a readout time, including all overheads, of ~2min34sec for Mosaic-1 (only a single amplifier is used). Data values are stored as 16-bit unsigned integers. For further details about the Arcon controller systems, see the [technical paper by Roger Smith](http://www.ctio.noao.edu/instruments/arcon/arcon.html) (<http://www.ctio.noao.edu/instruments/arcon/arcon.html>).

The data taking computer (**rush** or **rust**) is a 125 Mhz Sun Sparcstation 10 running SunOS. It has sufficient resources to manage the data acquisition, but not

much more. The large data volume is handed off to the reduction computer (**tan** (KP4m) or **emerald** (W0.9m)) via Fast Ethernet for all analysis and reductions, thereby relieving **rush/rust** of unnecessary loads. These are fast Linux boxes with >100 Gbytes of disk and >1 Gbyte of RAM.

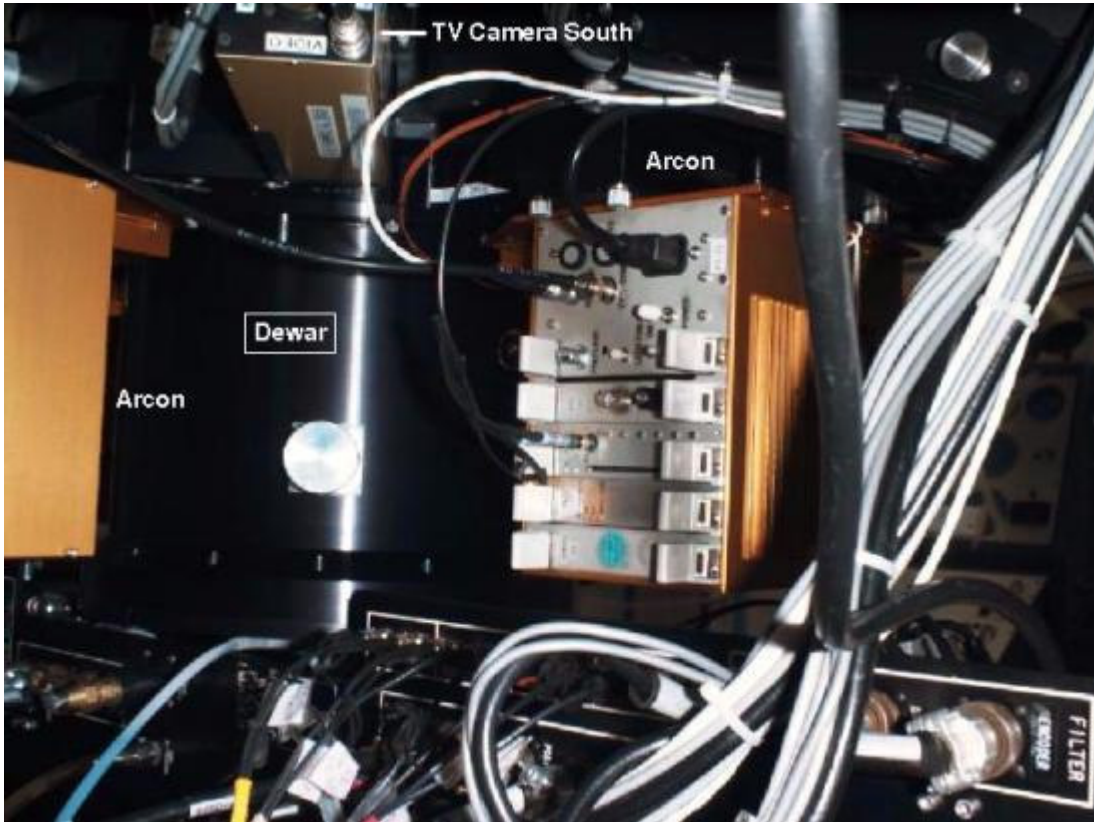


Figure 3.3.1: A view of the Mosaic system on the 0.9-m telescope indicating 2 of the 4 Arcon controllers. Also the south guide TV housing can be seen, as well as the Mosaic dewar (now appearing in black).

### 3.4. The CCD Shutter

The shutter consists of a pair of opposing sliding blades, one of which has rectangular slots open for the guide field. The blades are attached to pneumatically driven cylinders to provide very fast control of the shutter. This design allows the TV guide fields to be shuttered independently of the science field. In the *guide* mode, the closed shutter still allows the TV guide cameras to see the sky. In the *dark* mode, these fields are closed as well. The acquisition software controls which mode the shutter remains in between exposures. For *object* observations, the shutter goes to the *guide* mode before the exposure begins. For requested observation types of *dark*, *flat*, or *zero*, the shutter goes to the *dark* mode before the exposure begins (and remains in this mode after the exposure and readout are completed). Note that the TV fields are always open when the shutter is open; the different shutter modes only control the TV fields when the science shutter is closed. If you have been taking darks, flats, or



zeros, you may need to set the shutter mode to *guide* in order to get light to the TV guide camera.

The time for the blades to move completely across the field is 23 msec. The motion of the blades during both opening and closing are in the same direction so that the exposure level is nearly constant over the array. The motion of the shutter blades is along columns. The accuracy of the shutter has been measured to be ~3% in a 1-second exposure (that is, the exposure is really 0.97 seconds; see also Section 8).

### 3.5. The Filter Track

The filter track holds 14 filters. For each filter position, there is a filter for the CCD field, and two separate filters for the two TV fields. Separate filters are used so that a narrow bandpass science filter does not constrain the observer to find very bright guide stars. Normally, one would use clear (BK7) filters for the TV, but one can use a red filter to minimize moonlight or match the science filter more accurately. One might want to match the science filter, at least approximately, to minimize a guider drift. Even at the 4-m, residuals after the correction from the ADC are of order 0.1-0.2 arcsec. This, and all filter decisions, must be made ahead of time, as the filters can only be changed during the day by a qualified observing technician.

Adaptors exist to allow the use of 4-inch-square (1 adaptor) and 2-inch-square (2 adaptors). At the 0.9-m (f/7.5), these 4-inch filters illuminate approximately 6K X 6K pixels (56% of the total sky area); At the 4-m, 4-inch filters illuminate approximately 5.5K X 5.5K pixels (46% of the total sky area).

The positioning of the filter track is highly repeatable. However, the acceleration of the track can occasionally dislodge dust particles between filter moves, particularly if intervening movements have turned the filter upside down. In all cases, the filter track software moves the track in the direction that minimizes the distance moved to reach the requested filter position.

In addition to the 14-position filter track, there is a manual slide that can hold a single filter of the same size (5.75 inches square). This may be used, for example, to hold a bandpass filter when polarization filters are used in the track. Use of an additional 'hand-insert filter' changes the focus. At the 4-m, changing, inserting, or removing this filter can only be done at the maintenance (Southeast Annex) position.

### 3.6. Filters For Mosaic

To fully utilize the field of view of the 8Kx8K, filters must be 5.75 inches (146 mm) square, and have 5.43 inches (138 mm) clear aperture. The optimum thickness that preserves image quality over the entire field of view is 0.47 inches (12.0 mm). All NOAO mosaic filters adhere to these specifications to maintain a parfocal condition. Thus, neither the telescope nor the guide TVs should require a focus change when switching between filters. There is one exception, the CuSO<sub>4</sub> U filter

(k1001), for which there is a focus offset. Some of the currently available filters and approximate count rates ( $e^-/\text{sec}$ ) for a 20<sup>th</sup> mag star are:

| Filter                                     | TV     | Peak T% | 4-m          |      |         | 0.9-m        |      |         |
|--|--------|---------|--------------|------|---------|--------------|------|---------|
|  |        |         | Central Wave | FWHM | $e^-/s$ | Central Wave | FWHM | $e^-/s$ |
| U  | S8612  | 79.5    | 3577         | 646  | 35      | 3577         | 647  | 2       |
| B  | BG-38  | 69.3    | 4360         | 990  | 330     | 4360         | 990  | 14      |
| V  | BK-7   | 88.4    | 5370         | 940  | 340     | 5370         | 940  | 15      |
| R  | RG-610 | 86.2    | 6440         | 1510 | 410     | 6440         | 1510 | 16      |
| I  | BK-7   | 93.9    | 8220         | 1930 | 225     | 8220         | 1930 | 9       |
| H <sup><math>\alpha</math></sup>           | BK-7   | 94.3    | 6569         | 80   |         | ~6575        | ~80  |         |
| H <sup><math>\alpha</math></sup> +4        | BK-7   | 91.2    | 6611         | 81   |         | ~6615        | ~81  |         |
| H <sup><math>\alpha</math></sup> +8        | BK-7   | 89.5    | 6650         | 81   |         | ~6656        | ~81  |         |
| H <sup><math>\alpha</math></sup> +12       | BK-7   | 86.1    | 6692         | 81   |         | ~6695        | ~81  |         |
| H <sup><math>\alpha</math></sup> +16/[SII] | BK-7   | 90.7    | 6730         | 80   |         | ~6736        | ~80  |         |
| SDSS g'                                    | BK-7   | 90.2    | 4813         | 1537 |         | 4813         | 1537 |         |
| SDSS r'                                    | BK-7   | 91.8    | 6287         | 1468 |         | 6287         | 1468 |         |
| SDSS i'                                    | BK-7   | 94.6    | 7732         | 1548 |         | 7732         | 1548 |         |
| SDSS z'                                    | BK-7   | 94.8    | 9400         | 2000 |         | 9400         | 2000 |         |
| [OIII] #2                                  | BK-7   | 75.2    | 5021         | 55   |         | ~5027        | ~53  |         |
| [OIII]+29#2                                | BK-7   | 90.5    | 5305         | 241  |         | ~5305        | 241  |         |
| White                                      | BK-7   | 97.2    | 5600         | 6800 |         | 5600         | 6800 |         |
| Wash M                                     | BG-38  | 87.1    | 5100         | 1140 |         | 5100         | 1140 |         |
| Wash C                                     | S8612  | 75.4    | 3860         | 1034 |         | 3860         | 1034 |         |
| DDO 51                                     | BK-7   | 85.1    | 5132         | 161  |         | ~5132        | 161  |         |
| WR CIII                                    | BK-7   | 68.4    | 4653         | 52   |         | ~4660        | ~50  |         |
| WR HeII                                    | BK-7   | 73.3    | 4690         | 51   |         | ~4695        | ~49  |         |
| WR 475                                     | BK-7   | 78.8    | 4750         | 51   |         | ~4755        | ~49  |         |
| WR CIV                                     | BK-7   | 72.7    | ~5816        | 46   |         | 5823         | 42   |         |

See Figures 3.6.1 through 3.6.5 for plots of the current filter transmission curves. [ASCII Tables](#) that describe the transmissions are available on the Mosaic Web Pages.

The U-band filter is based on the same formulation as our 4" filter set (liquid  $\text{CuSO}_4 + \text{UG-1}$ ). Because containment of the liquid requires a thickness around the edge that exceeds the nominal Mosaic dead zone, some vignetting is present. At the 4-m, the vignetting introduces a 20% loss of light at the edge, but recovers to zero-loss at 200 pixels from the edge.

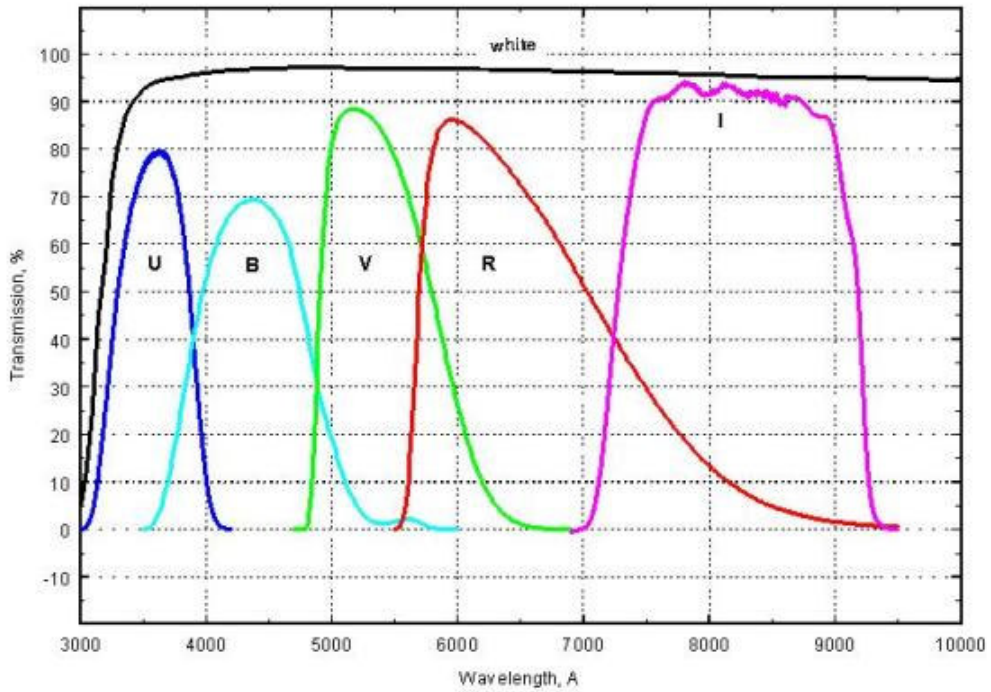


Figure 3.6.1: The broad band filter set, including the 'White' filter.



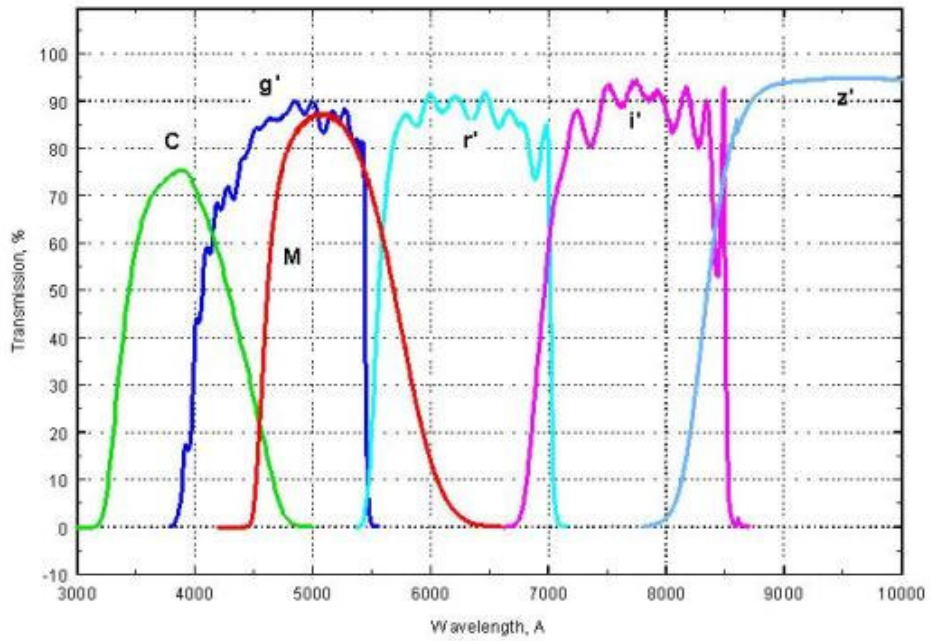


Figure 3.6.2: The SDSS  $g'$ ,  $r'$ ,  $i'$ , and  $z'$  filters, along with Washington C and M (M is the smooth curve slightly redder than  $g'$ ).

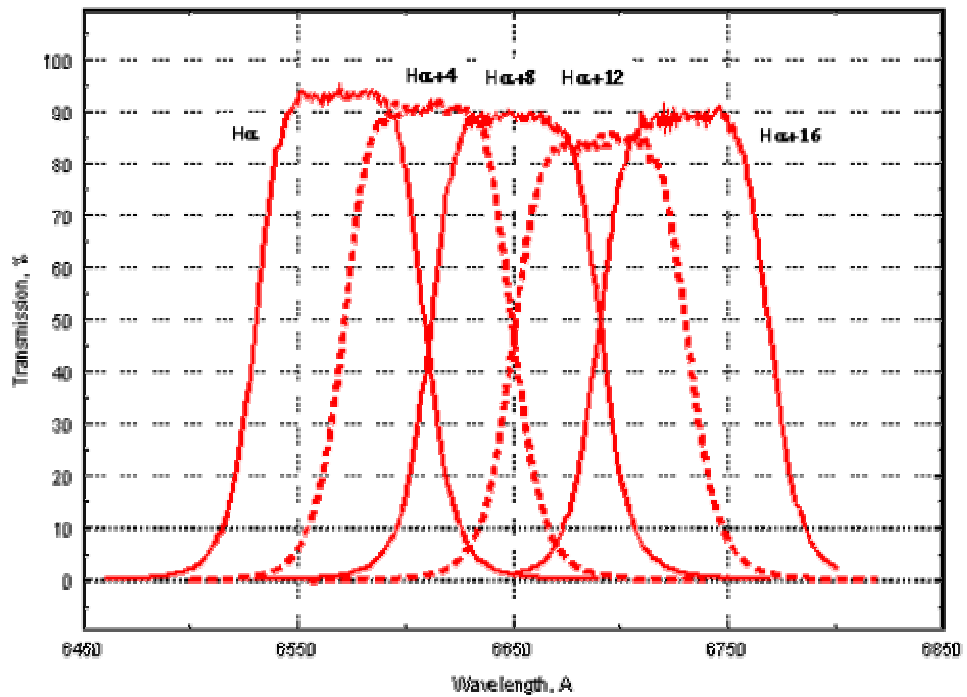


Figure 3.6.3: The current set of  $H^\alpha$  (plus redshifted) filters. Note that  $H^\alpha+16$  serves as a [SII] filter.

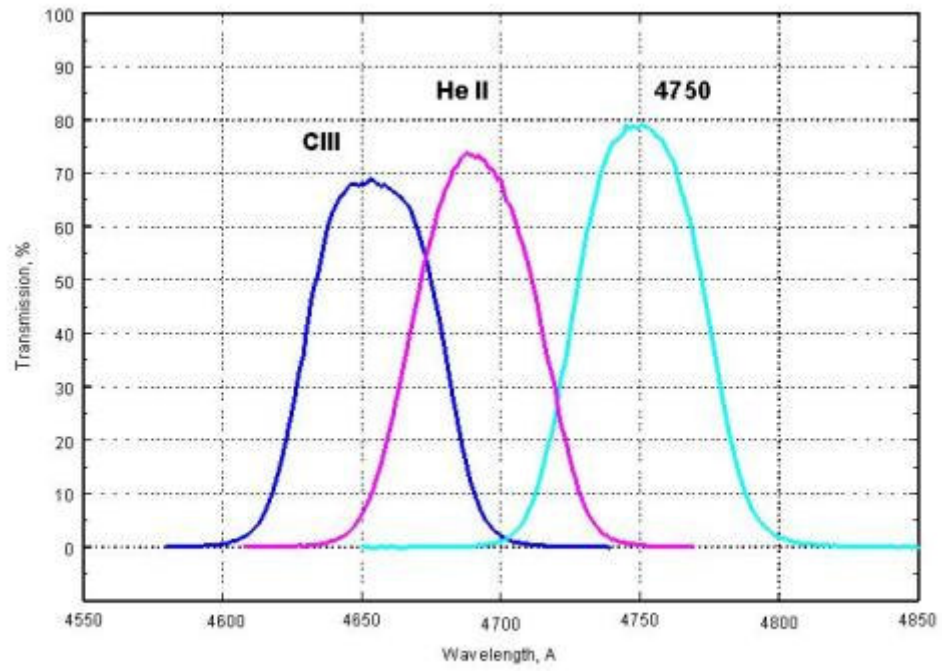


Figure 3.6.4: The blue Wolf-Rayet filters for [CIII], He II, and a continuum at 4750.

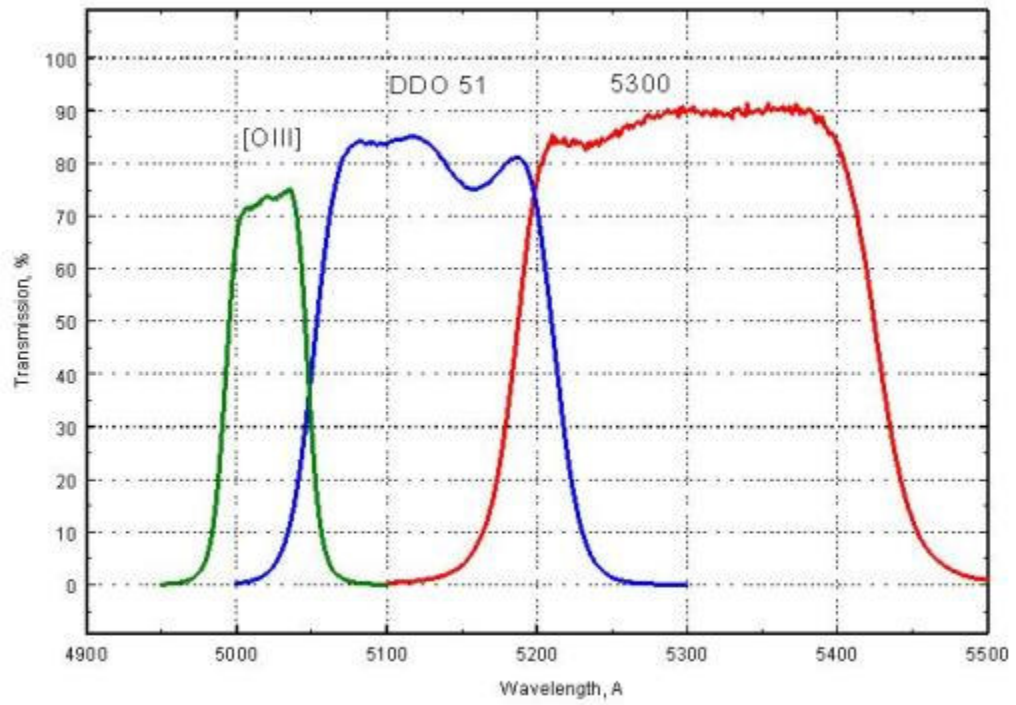


Figure 3.6.5: The [OIII] on-band and off-band filters, plus DDO 51.

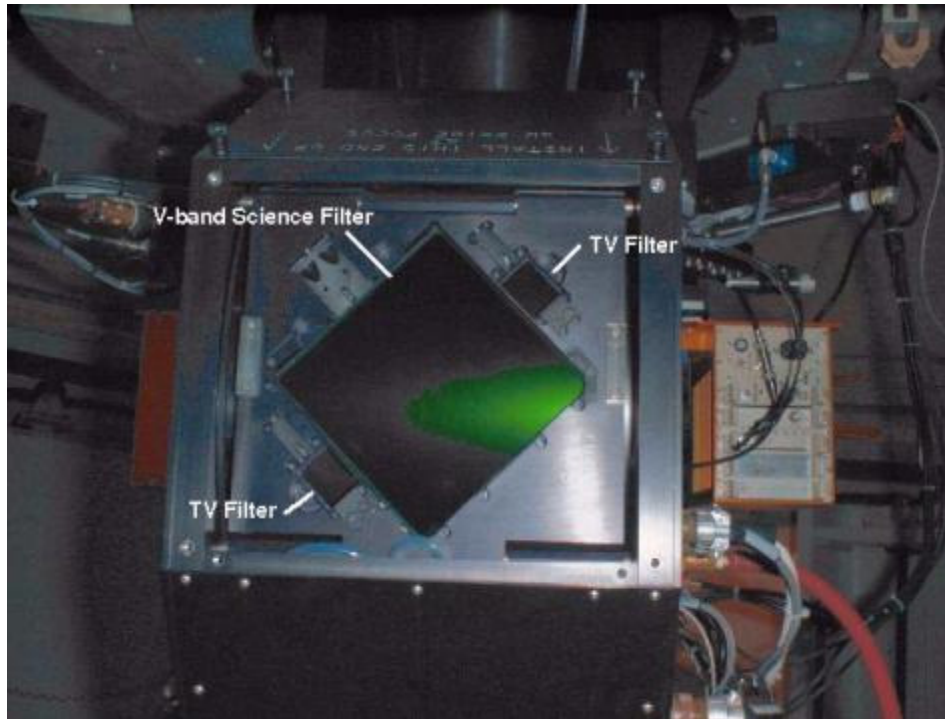


Figure 3.6.6: The V-band filter installed in the filter track. The 2 TV guider filters are visible to the lower left and upper right of the science filter. An Arcon controller can be seen in the background to the right.

### 3.7. Operation of the Guider TVs

Guiding with the Mosaic is accomplished using one of two TV cameras on the north and south sides of the science field. These are intensified fiber-optically coupled CCD cameras ("ICCDs"), and so, they can be damaged if exposed to bright light. The video signal from the selected TV camera is fed to the guider system. The field of view of each camera is about 2.2 arcmin on a side at the 4-m and about 5 arcmin on a side at the 0.9-m.

The field of view of the TVs is fixed with respect to the science field. At the 4-m, the fields are approximately 1440 arcsec north and south of the center of the science field. At the 0.9-m, the fields are approximately 2400 arcsec north and south of the center of the science field. TV focus can be moved remotely; offsets are -0.9 and -1.7 at the 4-m, and -0.1 and -1.9 at the 0.9-m, for the north and south TVs, respectively.

At a given location, suitable guide stars are almost always available without moving the telescope from the desired position. We find that we can guide at the 4-m on stars as faint as  $V=20$  in full moon, and at the 0.9-m to  $V\sim 17$  near full moon.

The TVs and guider are controlled by the telescope operator at the 4-m, but by the observer at the 0.9-meter. The observer needs to first select the N or S TV on the

distribution panel (see Figure 3.7.1). For the selected TV, on the ICCD Control Panel:

1. Turn the high-voltage potentiometer completely counterclockwise (10 turn pot)
2. Toggle the power switch on (on TV screen, pixel defects will appear)
3. Neutral density switch should be down (off)
4. Push the momentary button to enable high voltage
5. Slowly turn the high voltage potentiometer clockwise, monitoring TVs until guide stars appear
6. Acquire a guidestar on the computer **moss** and initiate guiding (consult the 0.9-m telescope user's guide ([http://www.noao.edu/0.9m/Tel\\_Op.html](http://www.noao.edu/0.9m/Tel_Op.html)) for details on step 6)

When switching between the two TVs, be sure to turn the high voltage potentiometer counterclockwise and turn off high voltage on the TV no longer in use.

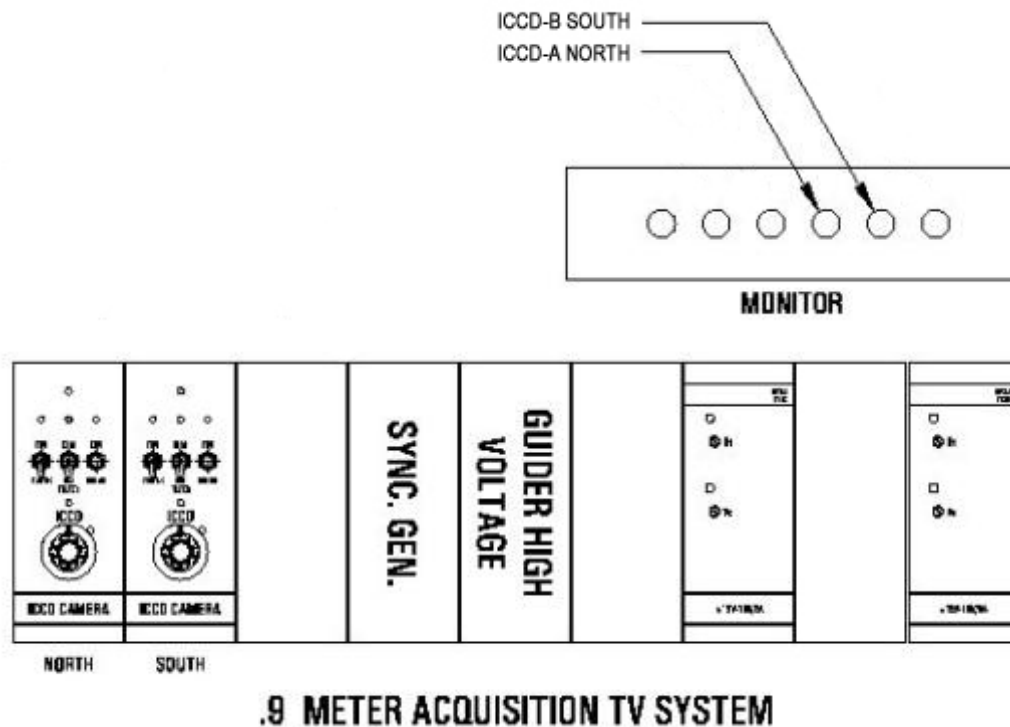


Figure 3.7.1: A schematic drawing of the layout of the TV control panels at the 0.9-m. Only the two leftmost panels in the lower rack are used with the Mosaic TVs. The upper rack is used to select which TV/video signal is seen on the monitor.

### 3.8. Correctors

The 4-m corrector is a 4-element fused silica (for maximum U-band efficiency) design with additional internal prisms that serve as an atmospheric dispersion corrector (ADC). See Figure 3.8.1 below for the optical layout and refer to [Jacoby et al.](#) (1998, SPIE 3355, 721) for a detailed description of the corrector and ADC.

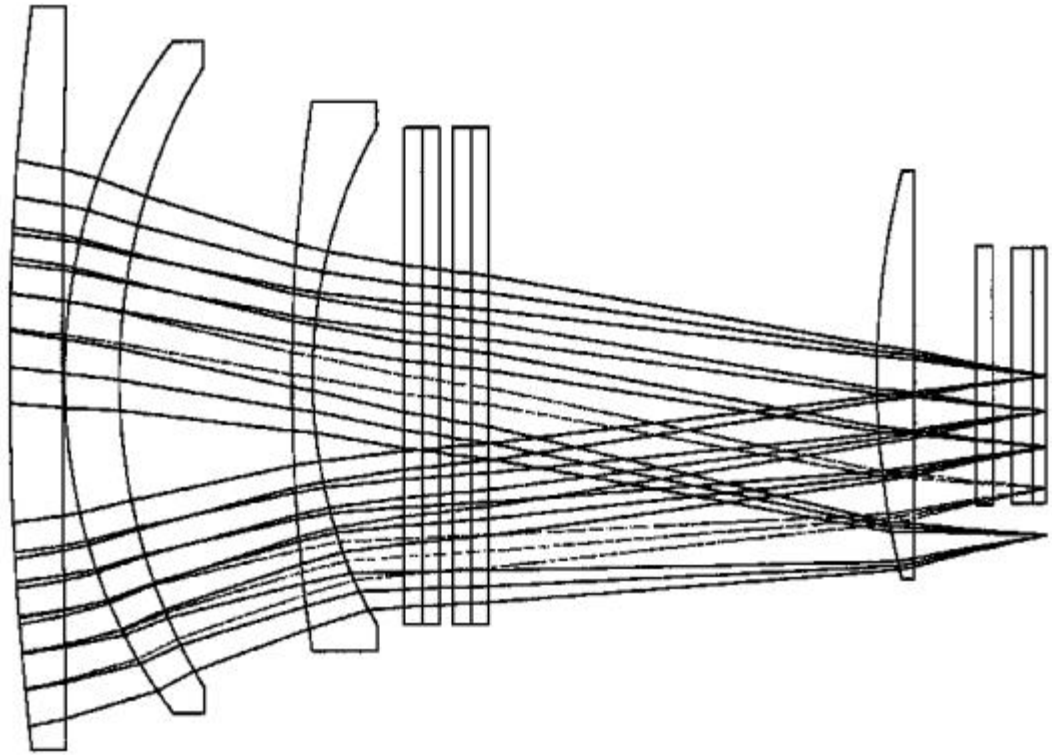


Figure 3.8.1: The 4-m corrector optical layout. All elements are made from fused silica except for the ADC components, which are made from LLF6, UBK7, LLF6, and UBK7 as viewed from left to right. At the right are the science filter, dewar window, and CCD (from left to right). The ADC elements appear in the middle as 4 planar elements (although they are wedged).

The 0.9-m corrector is a simple 2-element fused silica design. There is no ADC at the 0.9-m. See Figure 3.8.2 below for the optical layout.

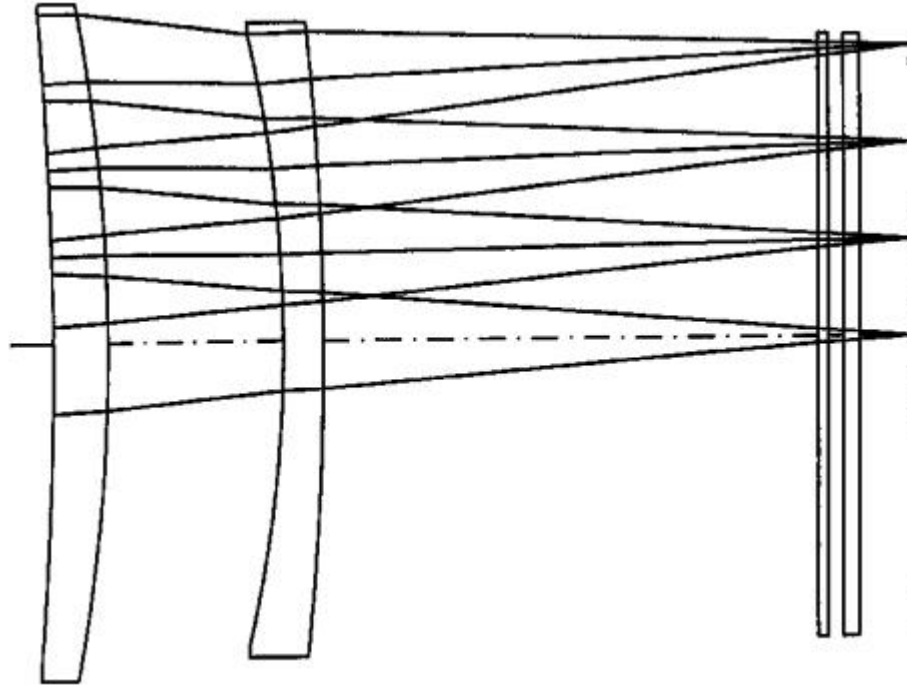


Figure 3.8.2: The 0.9-m corrector optical layout. Both elements are made from fused silica. At the right are the science filter, dewar window, and CCD (from left to right).

*Coatings and Scattered Light:* All optics have been coated with very broad-band multi-layer anti-reflection coatings to improve photon collection efficiency and to reduce scattered light. Surface losses are  $\sim 10\%$  from below  $3500 \text{ \AA}$  to longward of  $9500 \text{ \AA}$  at the 4-m and better at the 0.9-m. In addition, all interior structural surfaces have been blackened to minimize scattered light. Tests at the telescope indicate that the new correctors suffer significantly less than the old correctors from scattering. Nevertheless, with the very wide fields being imaged, bright stars are inevitable, producing some ghosting from bright objects in certain fields.

*Image quality:* The 4-m images are excellent across the entire  $35' \times 35'$  field. On good nights, we have documented uniform  $0.65'$  images in R. There is no measurable focus gradient or PSF variation to within  $\leq \sim 10\%$ .

The 0.9-m telescope is not as well corrected. There is a small focus gradient across the  $59' \times 59'$  field amounting to 20-30 focus units. Images in the corners of the mosaic degrade somewhat, especially in the lower-left corner (CCD #1). Also, the corners of the field are slightly vignetted ( $\sim 5\text{-}10\%$ ) by the internal telescope baffle.

*Image Scale:* The 4-m scale is slightly variable (6.3%) due to pincushion distortions, from  $0.261''$  per pixel at the center ( $f/3.1$ ) to  $0.245''$  per pixel ( $f/3.3$ ) at the corner of the field.

The 0.9-m scale is  $0.425''$  per pixel. The spatial variation is small, with the scale decreasing to  $\sim 0.420''$  per pixel at the corner of the field.



*Ghost Pupil:* When using narrow-band interference, very blue (e.g. U) or red (e.g. I, z') band filters at the 4-m, a faint image of the telescope pupil falls on the CCD and has a diameter of about 10 arcmin. Depending on the bandpass and construction of the filter, this reflection typically manifests itself at <1% for broad band to 2-4 % (narrow-band [OIII], H $\alpha$ , U, I, z') level above the background. It arises from an internal reflection off the front surface of the rear element of the corrector despite the use of an extremely good anti-reflection (AR) coating. Our investigation suggests that similar 4-element correctors currently in use should exhibit a similar effect, and tests performed by Alistair Walker with the CTIO 4-m confirm this analysis.

Although the ghost pupil can subjectively appear severe when viewed at high contrast (for narrow-band filters), photometric accuracy is preserved when this additive term is removed during the reductions. One can avoid the affected region on the Mosaic array by moving the telescope slightly if there is any concern about the reduction process [see Sec. 4].

For a description of how to correct for pupil ghost images in your observations you can read the discussion in the [NOAO Deep Wide-Field Survey MOSAIC Reduction Cookbook](http://www.noao.edu/noao/noaodeep/ReductionOpt/frames.html) (<http://www.noao.edu/noao/noaodeep/ReductionOpt/frames.html>).

### 3.9. Atmospheric Dispersion Corrector (at the 4-m only)

The Earth's atmosphere disperses the light from stars significantly when observing away from zenith. The effect is greatest and similar at U and B where the stellar image is stretched, for example, ~0.5" at a zenith distance of 45° (1.4 airmasses), and 0.9" at 60° (2 airmasses). The ADC prisms can be configured via a rotation to counter this effect nearly completely, thereby greatly reducing the elongation of the image introduced by the atmosphere.

*Modes of Operations:* There are 3 modes that the ADC system can be used<sup>1</sup>. Null mode, where the ADCs make no correction; Track mode, where corrections are periodically updated; and, Preset mode, where the corrections are preset at the beginning of an exposure to be correct for the middle of the exposure, but otherwise

---

<sup>1</sup> The 3 ADC modes in more detail are:

1. Null Mode: The ADC prisms are set to a fixed position that makes no correction for the atmosphere.
2. Track Mode: The positions of the ADC prisms are automatically updated at a periodic rate (typically, 60 second intervals) to account for the changing zenith and azimuth directions of the telescope as it moves (e.g., as it tracks during an observation or slews to a new position).
3. Preset Mode: The positions of the ADC prisms are set to a pre-determined location as demanded by the mid-point of the exposure. In this mode, movement of the ADC prisms is synchronized with the data acquisition sequence. In this mode, the ADC prisms do not move during the exposure.

not moved. We recommend using Track mode to improve the image quality with a minimum of attention to the ADC operations.

*ADC Filter Mode:* In Modes 2 and 3 (Track and Preset), the positions of the prisms are dependent on the observing bandpass because the optimum corrections have a color-dependent functionality. Thus, in using the ADC, it is important to select the proper filter mode in the ADC GUI on **rush**.

While the ADC is not necessary to compensate for atmospheric dispersion when using narrow-band filters, the guide cameras have separate broad-band filters [see sec 2.7] that will see the effects of atmospheric dispersion. Differential refraction between the guider and the science CCDs will change as a function of telescope position, and will cause blurring for long exposures at high zenith distances if the ADC is set to Null Mode. In this case, the observer should select an ADC Filter Mode that encompasses both the narrow-band filter and the TV camera filter bandpasses and select ADC mode 2 or 3 (track or preset).

*The ADC GUI:* Control of the ADC prisms and modes is selected via the ADC GUI (see Figure 3.9.1). Status of the ADC prisms also is displayed in the GUI window. The primary user parameters in the GUI that concern the observer are the ADC Mode (Null, Track, Preset) and ADC Filter Mode (U, B, V, R, I).

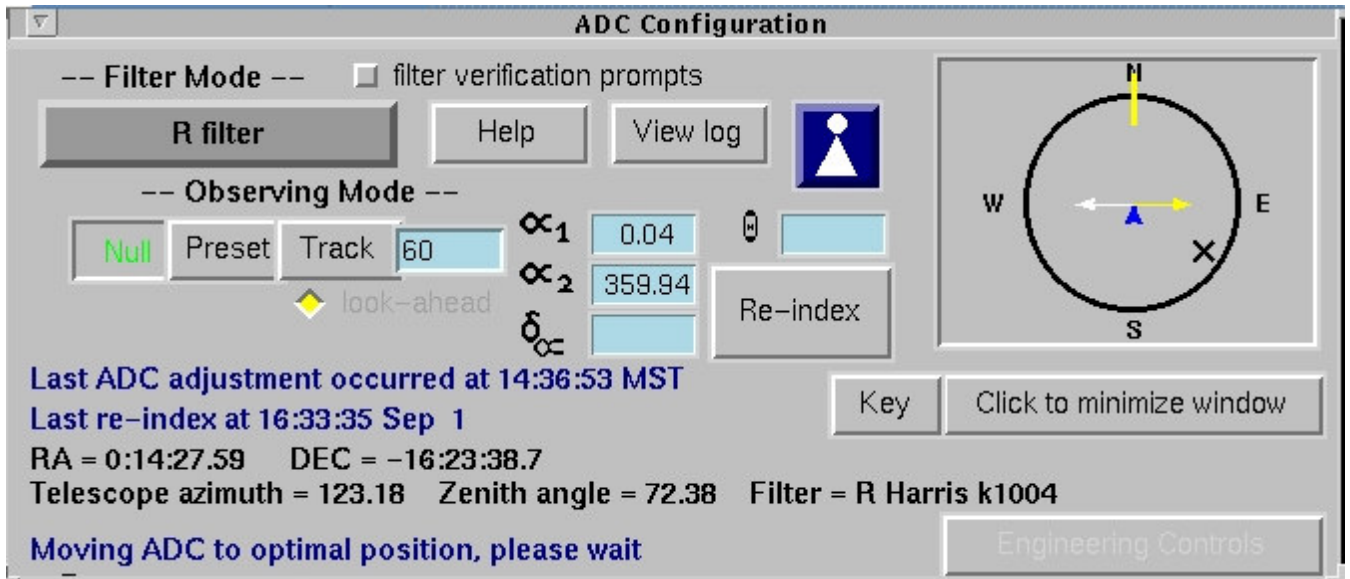


Figure 3.9.1: The ADC GUI.

When you change the filter you are using with the ADC in use you will be prompted to confirm that you want to change the operating mode of the ADC. There is no beep, or other sound warning that the system is waiting for your confirmation. There is a pop-up window that asks you to pick the appropriate mode. If you would rather have the system automatically decide which is the correct mode, you can unclick the selection button in the GUI (see figure 3.9.1). The default mode for each



filter is listed at [http://www.noao.edu/kpno/mosaic/filters/filter\\_names](http://www.noao.edu/kpno/mosaic/filters/filter_names). Note that the default of start-up mode of operation is for the system to prompt the observer to confirm the ADC mode before starting the first observation with a new filter.

---

## 4. Software

---

### 4.1. Logging in and firing up the Arcon/Mosaic software

Before you can begin to take data you must log in on *both* the data acquisition (**rush/rust**) and data reduction (**tan/emerald**) computers. We are currently controlling the Mosaic-1 with **rush** (KP4m) or **rust** (W0.9m) with the data handling and analysis being done with **tan** (KP4m) or **emerald** (W0.9m). Both **emerald** and **tan** have 3 monitors labeled **tan/emerald:0.0** (center monitor), **tan/emerald:0.1** (left monitor), and **tan/emerald:0.2** (right monitor). At the 4m there is an additional data reduction computer, **nutmeg**, which has a dual processor. *Note that the home directory for **tan** is /md1/4meter and on **nutmeg** is /md4/4meter.*

To begin your observing session you should follow these steps at either the 4m or 0.9m.

1. Log on to **tan (emerald)** as user 4meter (36inch). The computer **tan** is a fast computer with two CPUs (1.667 GHz AMD processors) and 1 Gbyte of memory operating under Linux. The computer **emerald** is also a fast Linux box with a 3.4 GHz (Pentium 4) CPU and 2 Gbytes of memory.
2. On the central console (tan:0.0 or emerald:0.0) right click on the background to bring up the menu of options. The top option is "*Start Interfaces for MOSAIC CCD*". Select this option. This will open the VNC<sup>2</sup> client in tan:0.1 (or emerald:0.1) in which the windows from **rush** (or **rust**) will be displayed. It will also start the DCA (Data Capture Agent) and associated GUI of the data handling system in the center monitor (tan:0.0) as well as the Ximtool display in tan:0.2 (or emerald:0.2), displayed on the right monitor. The right monitor is only an 8-bit display (to accommodate the current version of X-imtool; a new version with 24-bit color is under development) and should only be used for the display window or there will be problems with the allocation of colors to the display window. We are still working out some undesirable features in this display. If you would rather use DS9 as an option for the image display, kill the Ximtool window, right click on the background of tan:0.2 to bring up the menu, and select DS9. DS9 should work fine as your display device. If you want to switch back to Ximtool, you will have to log out of **tan** and then log back in and restart as described above. This

---

<sup>2</sup> VNC stands for Virtual Network Computing, a software program that allows one to view and manipulate windows on another computer. We use VNC to remotely view the Arcon control computers (**rush** at the 4m and **rust** at the 0.9m). For more information on VNC see <http://www.realvnc.com>.

will not affect the operation of **rush**, but should not be done when you are reading out an exposure or you will lose that exposure.

3. In the VNC viewer window on **tan** or **emerald**, click in the background of the display and select (Re)START ARCONS. This should bring up all of the MOSAIC GUI's controlled by **rush (rust)**.

This process takes about 2 minutes and you must also answer one question. A small window labeled "ARCON Console" will appear near the left center of the screen in which various messages will scroll by. After a few seconds a larger window labeled "ARCON Acquisition" will open immediately below this; this is the window you will use for entering all data acquisition commands. A brief greeting message will appear in this window and, eventually, you should be asked

**Do you want to synchronize parameters? (yes)**

When you reply "yes" (or just hit [cr]), the detector parameters loaded into Arcon will match those stored in detpars and the positions of the motors recorded in instrpars will correspond to reality. We currently recommend saying yes at the start of an observing run, but "no" during subsequent restarts. This saves slightly on the start-up time. In either case the IRAF package menus will be printed and the cl> prompt will appear. Some further windows will also pop up at this point. The system is now ready for you to begin observing.

Occasionally things will get hung up during the process of downloading and initializing the Arcon software. If this happens you may see the message (but probably not)

```
*****
**
*FAILURE DURING ARCON STARTUP !!!*
**
*Use re-start button to try again*
**
*****
```

In the majority of cases, simply performing the restart procedure will fix this problem, although it may be necessary to try this more than once. If after repeated attempts the system will not start, refer to the **Frequently Encountered Problems** section for further advice.

- Right click on the background of TAN:0.0 (or Emerald:0.0) and select (Re)start DCA. When you started ARCONS on **rush (rust)**, the start-up procedure will

have killed the previously started DCA. You can restart the DCA right after you start the ARCONS on **rush (rust)**, you do not need to wait until the ARCON start-up has completed.

The system is now ready for you to start observing.

## 4.2. Autologging

If you would like to use electronic auto-logging of your observations, you will need to follow the [instructions here](http://www.noao.edu/kpno/manuals/aol) (<http://www.noao.edu/kpno/manuals/aol>), including running loginit in a data-reduction window on **tan** (or **emerald**)

## 4.3. Restarting the Arcon software

Every so often, something or other happens which causes the Arcon software to hang, or otherwise get confused. In the vast majority of cases this can be fixed by simply restarting the software running on **rush/rust**. This takes only a couple of minutes.

- **On rush/rust** (inside the VNC window on tan:0.1 or emerald:0.1): Move the mouse pointer to an empty section of the desktop and hold down the right hand button to bring up the desktop menu. Select the item "*End ARCON Session*" and release the mouse button. After a few seconds the ARCON console, Acquisition, status and countdown windows will disappear. Once the windows have successfully closed, and the CPU meter has dropped to zero you can then restart the Arcon Session. Again bring up the desktop menu via the right hand mouse button and select "*(Re)Start ARCON session*". The software will go through the startup procedure described in [4.1]. You should normally answer "yes" to "do you want to synchronize parameters". This ensures that the detector parameters and filter positions, etc. match those in use prior to the re-start. Any other windows on the desk top will be untouched so any processes running in them will be unaffected, and you can continue to work in these windows.

When you *(Re)Start Arcons* the DCA on **tan** or **emerald** will close. You will need to restart it again. To do this, hold down the right hand button to bring up the desktop menu and select "*(Re)Start DCA*" and release the mouse button.

## 4.4. Restart and Power Cycling of the Arcons and Nexus/Tram box

Occasionally, the Arcon controllers get into a weird state. There are roughly 5 levels of severity with which the user can respond.

- 1) Restart the Arcons: Use the pull-down menu on the data taking computer (**rush/rust**) to select End ARCON session. After the windows have successfully closed and the CPU has returned to zero, select Start ARCON session from the

background pull-down menu. This will take a little while. It may take several (3-5) Restarts to succeed. Always try at least 3 Restarts before proceeding to the next level of severity listed below.

2) Logout and Restart the Arcons: End the ARCON session on the data acquisition (**rush/rust**) computer and completely log out of the data reduction (**tan/emerald**) computer. Log back in and select "Start Interfaces for MOSAIC CCD". This will start the ARCON session, DCA, and Ximtool-alt. If there are still problems starting the ARCONS go to level 3.

3) Try some diagnostics: open a Unix window on the Data Acquisition computer, and then run the following diagnostic commands that check for communication with the Arcons:

```
/xp/source/sun/bin/nexus0123
```

```
/xp/source/sun/bin/aset0123
```

These should complete normally for all 4 Arcons. If they fail to complete, try a few more times. If the errors are persistent, power cycle the TRAM box (see figures 4.4.1). At the KP4m power cycling the TRAM box is done remotely (see below). At the W0.9m this is done manually (see below).

## **REMOTE POWER CYCLING OF THE TRAM BOX (4M ONLY)**

- a) Open an xterm window on Rush.
- b) Telnet **4m-nexus-power** (140.252.52.74).
- c) Log in as **4meter** - enter the password.
- d) This window will print some information. Type **off 1** and confirm with **Yes**.
- e) Count slowly to 50. Type **on 1** and confirm with **Yes**.

## **MANUALLY POWER CYCLING OF THE TRAM BOX (0.9M ONLY)**

- a) Locate the TRAM box in the computer room (see figure 4.4.1 below).
- b) Turn the power on the TRAM box off, wait 30 seconds and turn the power back on.

Try the "/xp" commands again. If the "/xp" commands succeed, then try the following commands from a Unix window on the Data Acquisition computer. This is a subset of the normal Arcon startup.

**cd**

**arcon\_user**

This will take a few minutes and tries to bring up the Arcons completely, but not the other windows (GUI, IRAF). If it fails the first time, try a few more times. If it succeeds or fails, type "arsh stop" to exit the window. If successful, attempt another Arcon restart. If it fails, try 3 more times. If you still cannot get arcon\_user to complete, go to level 4.

4) Reboot the data-taking computer (**rush/rust**):

a) End the ARCON session by selecting "End ARCON session" on the Data Acquisition computer (**rush/rust**).

b) Open an xterm window from the background menu on **rush/rust**.

c) Type "reboot-rush" (at KP4m) or "reboot-rust" (at W0.9m).

d) Wait a couple minutes for the reboot to complete. While waiting, cycle the power on the TRAM box (see the TRAM box power cycling procedures above).

e) Restart the VNC client to **rush/rust** via the background menu on **tan/emerald** and start the Arcons via the background menu "(Re)Start Arcon Session".

f) You may have to execute the level 3 commands to make any progress.

g) At this point, it probably won't hurt to restart the DCA on the data reduction computer using the pull-down menu.

5) This is the most serious mode and it should be done with the cognizance of NOAO personnel. This will be a total restart of the system. Follow the process in item (4) above for the data-taking computer, but only through step (c). Then quit the DCA on **tan** or **emerald**

**AT THE 4-M** it is possible to cycle power to the instrument and Nexus/Tram box remotely:

a) From a UNIX prompt type **telnet 4m-nexus-power**. Use 4meter as the username. The password is posted in the control room. To turn off the power to the Nexus/TRAM box type **off 1** at the prompt and confirm with **Yes**.

b) From another UNIX prompt type **telnet 4m-pf-power**. Use 4meter as the username. The password is posted in the control room. To turn off the ARCON power controller type **off 1** at the prompt and confirm with **Yes**.

c) Slowly count to 50.

d) Turn on the ARCON power controller by typing **on 1** at the prompt in the **4m-pf-power** window.

e) Turn on the Nexus box by typing **on 1** at the prompt in the **4m-nexus-power** window.

f) If the system still fails to run, try steps (1-3) several times. If that fails, call for help.

**AT THE 0.9-M** you will need to bring the telescope to zenith and cycle the power on the instrument manually:

a) Power off the Nexus/TRAM box in the computer room (see figure 4.4.1).

b) Go to the instrument and power off the Arcons. There are 4 red power switches located on a power plug strip (see figure 4.4.2). Wait 10 seconds. Power on the 4 Arcons.

c) Complete step (4d) by powering the TRAM box on.

d) Log back into both computers to restart the Arcon and DCA software.

e) If the system still fails to run, try steps (1-3) several times. If that fails, call for help.



Figure 4.4.1: The Arcon "TRAM" box with Power Switch noted. At the KP4m you should not need to use this switch - see section 10.2.

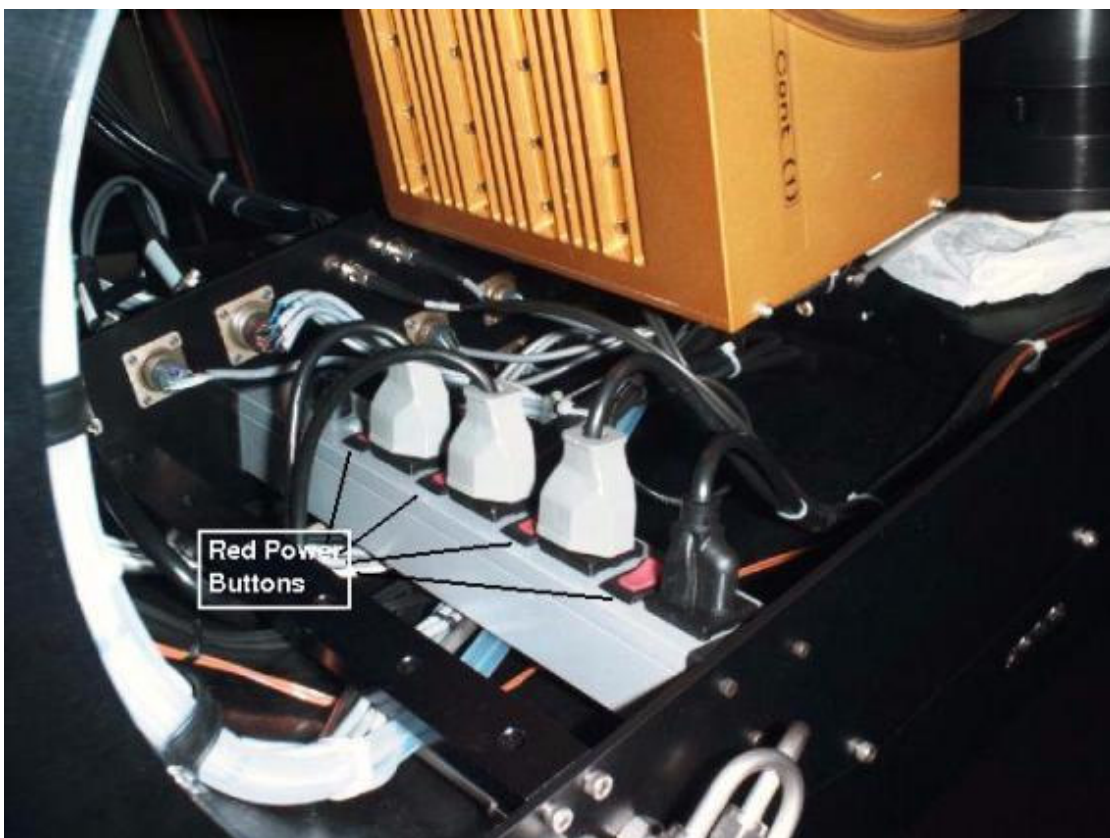


Figure 4.4.2: The Arcon power strip with 4 power switches noted.



## 4.5. Shutting down the software and Logging out

During your run, you may wish to stay logged in continuously to maintain your window environment, especially if you've taken some time to move and resize dozens of windows. On the other hand some folks feel that a "clean" environment makes for healthier observing, thus you may wish to log out at the end of every night to reset any gremlins back to their initial conditions. In all cases, after your last night, you should log out completely from both **rush/rust** and **tan/emerald**.

To log out of **tan** or **emerald** it is not necessary to shutdown Arcons - you can simply close the VNC window. However one can first end the Arcon session on **rush/rust** if desired.

- **On rush/rust:** Move the pointer to an empty section of the desktop (in the rush-VNC window) and hold down the right hand button to bring up the desktop menu. Select the item "End ARCON Session" and release the mouse button. After a few seconds the Arcon console, acquisition, status and countdown windows will disappear. Any other windows on the desk top will be untouched so any processes running in them will be unaffected, and you can continue to work in these windows. Then close the VNC window by clicking the 'X' in the upper right-hand corner of the window.
- **On tan/emerald:** select "Logout '4meter?..." from the 'K' start menu at the bottom left corner of the screen.

## 4.6. OBSINIT

At the very beginning of your observing run, you should clean off all of the previous observer's images and files, and reinitialize all of the IRAF parameters to their default values. This must be done separately on both **rush/rust** and **tan/emerald**.

You, or the instrument assistant, can accomplish this as follows:

On **tan** (or **emerald**)

- Log on using the observer login and password posted on the machine.
- In the IRAF "Data Reduction" window, and any other IRAF sessions that may be running, type **logout**. The window should vanish.
- Select "Unix Xgterm" from the root menu. (Move the mouse to any blank area of the screen, and hold down the right mouse button. Slide the mouse down to "Unix Xgterm".)
- In the new window, type **obsinit** and answer the questions appropriately.

On **rush** (or **rust**):

*If an Arcon session is active on **rush** or **rust**,*

- Shutdown the Arcon session. (Move the mouse to any blank section of the desktop and hold down the right hand button. Select the item "End ARCON Session" and release the mouse button.
- Log out of any IRAF cl sessions that may be running.
- Select "Unix Xgterm" from the root menu. (Move the mouse to any blank area of the screen, and hold down the right mouse button. Slide the mouse down to "Unix Xgterm".)
- In the new window, type **obsinit** and answer the questions

On **rush** (or **rust**):

*If an Arcon session is not active on **rush/rust**,*

- Open a "xgterm" window in the VNC window for **rush/rust**.
- At the rush UNIX prompt, type **obsinit** and answer the questions

The reason for the above procedure is that you cannot have IRAF running during an **obsinit** because parameters will not be reset correctly. Make sure that you have logged out of each IRAF window before running **obsinit**.

Note that the user has the option of selecting whether CNTL-z or CNTL-d will be the default for an end-of-file command; the former is the standard at NOAO, but the latter is the standard at many other places. If you simply wish to set all of the IRAF parameters back to their default values, you may run this in the middle of your observing run without losing any files.

## 4.7. Re-starting the MSE and related software

The software (MSE) which controls the instrument (filter track, TV cameras, etc.) and the communications software which links everything together (MPG-router) are normally started by support personnel when the instrument is installed on the telescope. However, a restart may be necessary from time to time. If the M CCD configuration screen shows ????? instead of numbers for the TV camera focus and temperature readouts, then there may be a problem with this software.

```
rush% rsh taupe (at the 0.9-m, or cinnamon at the 4-m)
taupe% ps -ax | grep msmid
is it there ? no
taupe% start-msmid
```

## 4.8. Observe - The Only Command You Really Need to Know

All data taking can be done by using a single command: observe. This command takes one or more CCD exposures, as in the following example:

```
cl> observe
Exposure type (|zero|dark|object|comp|pflat|dflat|sflat|focus)
(zero): obj
Number of exposures to take (1:) (1):
Exposure time (0.): (0.): 300
Title of picture: M33 V
Filter in wheel one (B): V
Telescope focus (0.): -10200
Filter1 = VTelfocus = -10200.00000
Image obj022
Mosaic1 [1:8315, 1:8220] bin=[1:1], gain 1
cl>
Observation finished...
```

You will be prompted for all the information required which includes:

- Exposure type: can be "zero" (sometimes referred to as bias), "dark", "object", "dflat", "sflat" or "focus". Note that when selecting from a list of options like this you may enter any unique abbreviation. Focus exposures, which are somewhat special, are described fully below in taking a focus frame.
- Number of exposures to take: a sequence of this number of pictures, all having the same parameters, will be taken.
- Exposure time: the integration time in seconds (which need not be an integer). This parameter will not be requested in the case of exposures of type "zero" for which it is 0.0 by definition.
- Title of picture: this will be included as the title in the image header.

In each parameter query you are supplied with a default value, which you can accept by simply hitting [CR]; these default values are just the previous entries. If you make a mistake, or change your mind, you can abort the command during the parameter entry stage by typing ctrl-c; the superstitious may enter the command flpr at this point in order to ward-off the evil eye. For exposures of types other than "zero" and "dark", you may also be prompted for the following parameters of the instrument/telescope:

- filter in wheel one: the required filter. Note that filters are specified by name, rather than by their position in the filter wheel; the way this translation is set up is described in wheel psets.

- Telescope Focus: the telescope focus setting

You can control whether you will be prompted for these instrument-related parameters during observations (see section on motor control). Once you have entered all the necessary information, there will be a short pause while the motors in the instrument are moved to the required positions and then your CCD exposure will begin. A short message will be printed which includes the name of the picture which will result. This name is derived from the exposure type by appending a running number which is automatically incremented after each exposure (how this number can be adjusted and alternate naming schemes are described in **obspars**). The image will be created in the current directory (at the time the observe command was issued).

The observe command terminates as soon as the exposure starts and you can enter other commands in the IRAF acquisition window. While you could type any IRAF command you like, we suggest you keep this window free for entering the special exposure control commands.

The status window will keep you informed of the progress of your exposure. As soon as the exposure starts the first line will change from 'CONTINUOUSLY\_ERASING' to 'INTEGRATING' and the status window will also show parameters of the exposure such as the picture title. A counter in the status window, and more legibly the countdown window, will begin counting down the time remaining in the exposure. Another counter will count up the dark time - the time since the CCD stopped being erased. This will be slightly greater than the elapsed exposure time due to overheads in the controller, and will of course be very much longer if you paused the exposure.

When the exposure finishes, the CCD will be read out. The first line in the status window will change to "READING" and the "buffers read" counter will indicate the number of buffers of data successfully transferred to the Sun. The data is initially written in the controller's internal format to a spool file, but it is automatically converted into a FITS format image on **tan/emerald** within a few seconds of the exposure finishing. The end of each exposure is accompanied by distinct sound from **tan**'s speakers.

If you requested that observe take only a single exposure, the message "observation finished ....." will appear in the IRAF interface window as soon as the readout is complete; things are then ready for you to start another exposure. If, instead, you requested a sequence of several pictures, the next exposure will start automatically. You may immediately examine or process the resulting image even though the sequence is not complete. Note that the "pictures remaining" counter in the status window shows how many exposures remain in the sequence. Once the final picture has been readout, the message "sequence finished ....." will appear in the IRAF interface window. Should you miss the end of sequence or end of exposure message, note that the CCD is idle and things are ready for you to initiate new exposures, whenever the top line of the status display reads 'CONTINUOUSLY\_ERASING'.

## 4.9. Exposure Control Commands

The following commands can be used to modify an ongoing exposure:

- **pause** - Pause the exposure e.g. while waiting out passing clouds.
- **resume** - Resume a paused exposure.
- **tchange** - Change exposure time. You will be prompted for the amount by which to change the exposure, which may be positive or negative. If used during a sequence the duration of the present exposure and all subsequent exposures is changed.
- **stop** - Stop the exposure early, read out the CCD and save the data to disk. If used during a sequence, the sequence is also terminated.
- **abort** - Abort the exposure. The CCD is not read out and any data collected during the exposure is irrevocably lost. If used during a sequence, the sequence is also terminated. **Do not abort a PAUSED exposure! - resume first, or suffer serious consequences!** (i.e., results in a hung system, which will need a restart).
- **pictitle** - If when entering the title you typed M31 when you meant M33 you can use this command to give your image a new title.

## 4.10. Other Commands For Taking Data

### 4.10.1. Taking exposures of specified type

In addition to observe, there are specific commands to take one or more pictures of each type:

- **dark** - Take one or more exposures of type dark
- **dflat** - Take one or more exposures of type dome flat
- **object** - Take one or more exposures of type object
- **sflat** - Take one or more exposures of type sky flat
- **zero** - Take one or more exposures of type bias

Except, of course, for the exposure type, these commands take the same parameters (and prompt for them in the same order) as does observe. Apart from saving you entering that one extra parameter, use of these commands allows one to set default parameter values, and also select which parameters are prompted for according to picture type.

**While we were having trouble taking bias sequences at the KP4m during 2002-2003, they are working again. Please feel free to take sequences of exposures without fear of hanging the system. At the W0.9m there is still a problem. Please use the script biases9.cl to take a sequence of biases.**

### 4.10.2. Getting more of the same

Another useful command is:

- **more** -Take one or more exposures exactly like the previous one

The more command is slightly unusual in the way it prompts for parameters (it is patterned after commands like `directory` and `help`). If you type

```
cl> more
```

you will not be prompted for the number of exposures (as one might expect) but rather a single exposure will be taken (which more often than not is what you actually wanted to do). Conversely

```
cl> more 10
```

will take ten more exposures.

### 4.10.3. Taking a test exposure

The test command is just like `observe` except that instead of creating a new image it always writes to an image called **test.fits** (overwriting any earlier version). This can be useful e.g. for checking you have the field centered correctly. If you change your mind and decide you want to keep the data just rename the image **test.fits**.

### 4.10.4. Taking your flats the easy way

It's the end of the night. You have taken data through a bunch of different filters. Now you need to get flats for them all. And all you really want to do is go to sleep .....

Well **doobs** is for you. With this task it is possible to take flat fields, or exposures of the same object, in a list of filters. [The major limitation for taking flats is that the lamp brightness level will be the same for all exposures.] For example,

```
cl> doobs
Exposure type (|object|dflat|sflat|): df
Number of exposures to take in each filter (1:) (1): 5
list of filters in wheel1: B,V,R,I
List of exposure times: 15,10,5
The following pictures will be taken:
PicturesFilter1Exposure
31 - 35B15
36 - 40V10
41 - 45R5
41 - 45I5
Title for pictures: Dome flats night1
Filter1 = BTelfocus = -9300.0000
```

```

Images dflat031 - dflat035
Mosaic1 [1:8315, 1:8220] bin=[1:1], gain 1
Sequence finished...
Filter1 = ITefocus = -9300.0000
Images dflat041 - dflat045
Mosaic1 [1:8315, 1:8220] bin=[1:1], gain 1
Sequence finished...
All exposures finished ...

```

will take sequences of 5 dome flats each in B (15s exposures), V (10s), and R and I (5s each). Note that the list of exposure times may be shorter than the list of filters; in this case the last exposure time is used for all the remaining filters as in the example. The list of exposure times can also be longer in which case multiple exposures of different times will be taken in the last filter. Thus, for instance, a list of filters of "B" and a list of exposures of 30,300 would take a 30s and a 300s exposure in the B filter.

Note that **doobs** is simply a cl script based on the observe command. One consequence of this is the user's terminal will be tied up while the script is running. If you realize you have made a mistake after starting the script and want to stop execution of **doobs**, first type Ctrl-C which will abort the script, then type abort (stop) which will terminate the sequence of exposures currently being executed.

#### 4.10.5. Grids and Dithering

If you want to make a cosmetically clean image, it is necessary to take multiple exposures at slightly different telescope pointings to fill in the gaps between CCDs (and eliminate bad columns). Two scripts have been provided to help in this task

- **mosdither** - takes images at a series of positions read from a file:

```

cl> lpar mosdither
exposure= 420. Exposure time
title= " Tr7 I dithered" Title for pictures
(offsets= "ditherdb$todd.dat") file containing offsets
(npics= 1) Number of exposures at each position
(units= "pixels") units of offset
(gohome= yes) return to starting position at end of grid
(guider_contr= "offon") Guider control mode
(resume= no) start at position_number rather than beginning
(position_num= 2) starting line number in file
(old_mode= no) run in old (but tested) mode
(fd= "") internal use only
(mode= "ql")

```

```

cl> mosdither
Exposure time (0.:) (420.):
Title for pictures (test): Tr7 I dithered
Filter in wheel one (I):
Telescope focus (3000.:6000.) (4400.): 4440
Filter1 = I
Telfocus = 4440.00000
Image obj026
Mosaic1 [1:8315, 1:8220] bin=[1:1], gain 1
Observation finished...
Hit any key when ready (guider working etc.) >
Image obj027
Mosaic1 [1:8315, 1:8220] bin=[1:1], gain 1 .....
Observation finished...
All exposures finished ...

```

After each telescope movement the program pauses to allow time to reposition the guider; hit any key when ready to continue. At the end of the sequence the telescope will (by default) be returned to the starting position so that the process can be repeated in another filter.

The telescope positions are expressed as offsets in RA and Dec relative to the position of the telescope when the command is started; they may be given in units of pixels or of arcseconds. The file `ditherdb$todd.dat` contains a recommended dither pattern for filling in the interchip gaps.

```

# Todd Boroson's canned dither scheme for the NOAO mosaic
# Offset relative to current telescope position
# RA (pixels) Dec (pixels)
0 0
200 -200
-200 200
100 100
-100 -100

```

The user may instead use their own file by setting the parameter offsets to the name of the file. Phil Massey contributes the following table of aerial coverage when using the above dither offsets. Entries in the table represent what fraction of the imaging area receives 20%, 40%, 60%, 80%, and 100% of the integration time.

| Fraction of Exposure Time | Total Image area (8697 x 8642) | Central Image Area (8297 x 8242) |
|---------------------------|--------------------------------|----------------------------------|
| 20%                       | 4.6%                           | 0.0%                             |
| 40%                       | 4.4%                           | 0.0%                             |
| 60%                       | 4.4%                           | 4.9%                             |
| 80%                       | 11.8%                          | 13.0%                            |
| 100%                      | 74.5%                          | 81.8%                            |



Many mosdither options have now been used. Feel free to contact us for more advice on setting up your own custom pattern.

- **mosgrid** - is similar except that it takes images on a regularly spaced grid. The grid is specified by the starting offset, spacing, and number of positions in RA and Dec; again these may be given in arcseconds or in pixels.

```
cl> lpar mosgrid
exposure= 60. Exposure time
title= "Tr7 I grid" Title for pictures
(npics= 1) Number of exposures at each position
(xstart= 0.) initial offset in RA from current position
(xstep= 20.) step size in RA
(xsteps= 20) Number of steps in RA
(ystart= 0.) initial offset in Dec from current position
(ystep= 20.) step size in Dec
(ysteps= 2) Number of steps in Dec
(units = "pixels")units of offset
(gohome= yes) return to starting position at end of grid
(guider_contr= "none") Guider control mode
(resume= no) resume at next position in grid (after quitting
(position_num= 4) starting position in grid
(mode= "ql")

cl> mosgrid
Exposure time (0.:) (60.):
Title for pictures (Tr7 I grid):
Filter in wheel one (I):
Telescope focus (3000.:6000.) (4440.):
Filter1= I Telfocus = 4440.00000
Image obj031
Mosaic1 [1:8315, 1:8220] bin=[1:1], gain 1
Observation finished...
Hit any key when ready (guider working etc.) > .....
Observation finished...
All exposures finished ...
```

Both **mosdither** and **mosgrid** include several important user options as hidden parameters. First, there is `guider_control`, which can be set to "none" if you are not using the guider at all, "wait" which waits for the observer to do whatever they wish to do before starting the next exposure, and "onoff" which should be used most often when you are using the guider. In the "onoff" mode, the guider is turned off, the telescope is moved by the proper dither/grid motion, and you are prompted to hit any key when the guider has been readjusted for the motion of the telescope/guide star; when you hit a key, the guider control is automatically restarted.

In addition, **position\_num** provides control to pick up in the middle of a dither/grid sequence should a crash occur before the sequence was completed.

## 4.11. Controlling the Data Capture Agent (DCA) on Tan or Emerald

A screen capture of the current set of graphical user interface (GUI) control windows that control data acquisition and post-processing on **tan/emerald** is shown below. Most operations should be self-explanatory, but for that rare button that defies interpretation, the on-line help button should clarify the situation.

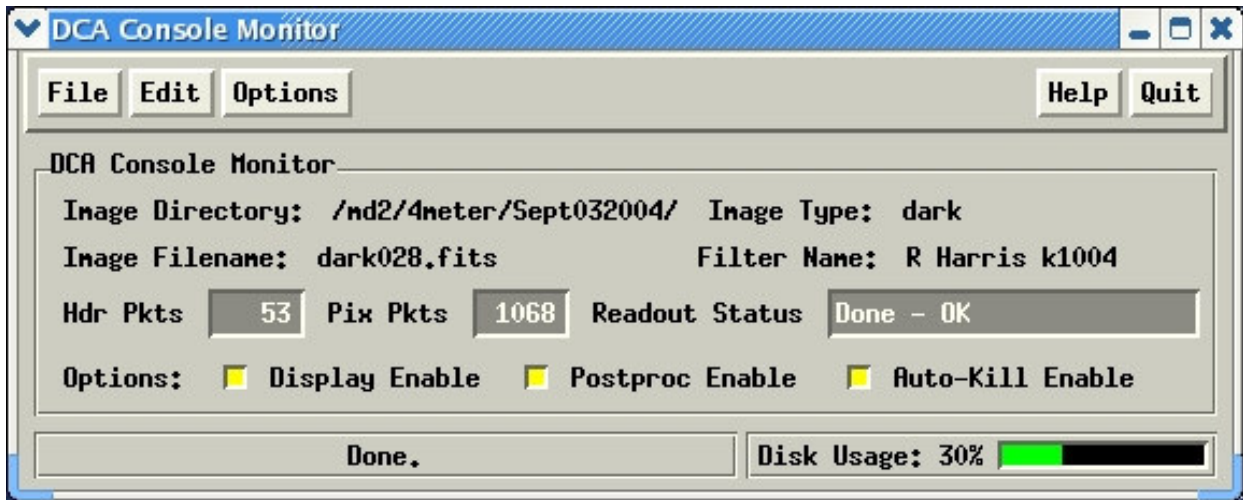


Figure 4.11.1: The main GUI panel for the DCA. Verify that the directory shown is where you want your pictures to go (controlled via the Arcon IRAF window using "cd"). You can watch the packets count up as the picture is read out.

Briefly, the Main DCA GUI provides control for you to:

1. turn on or off the auto-display of images ("Display Enable" box) as they are being read out. Turn this off for very short exposures (e.g., biases).
2. enable the post-acquisition processing ("Postproc Enable")
3. allow auto-termination of the current display process if another image is read out before the previous display completes ("Auto-Kill Enable")

You can also monitor the status of the readout (bottom line gives percent of readout), and verify that the filter and image type are correct.

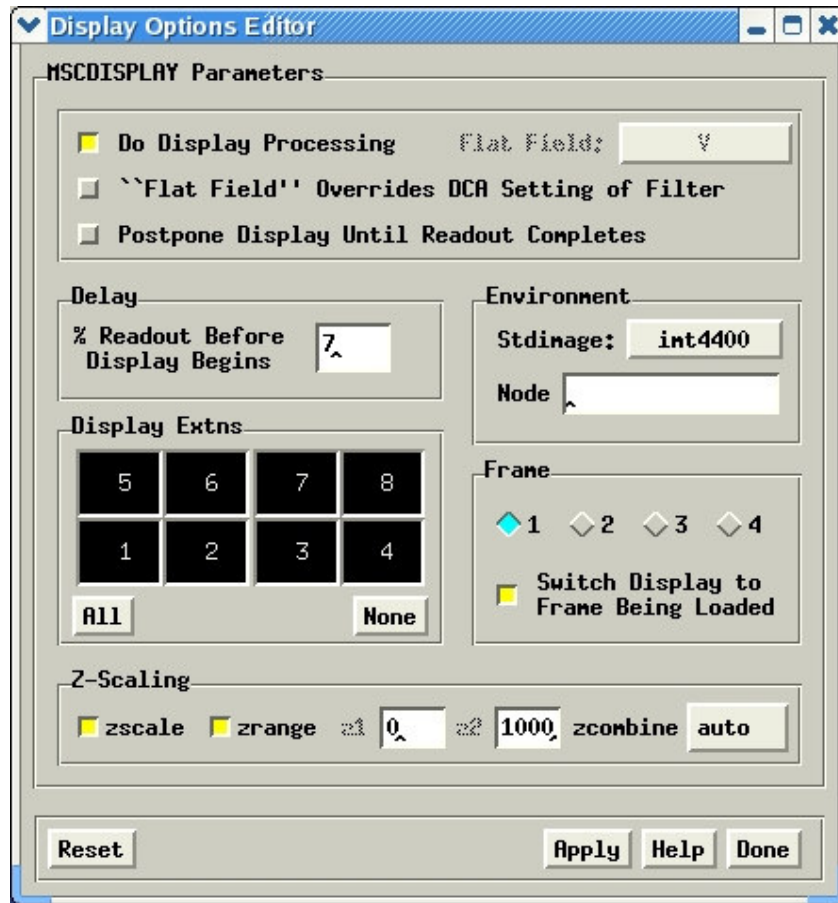


Figure 4.11.2: The Display Options Editor GUI panel for the DCA. This GUI offers control of several complex functions.

The "Display Options Editor" panel allows you to:

1. enable "on-the-fly" processing (overscan subtraction, flat-fielding) of the raw image (flat-fielding applies to 'object' types only) to provide a cleaner image for quick-look examination; otherwise, sensitivity variations across the chips make it very hard to see faint objects. This option requires about 20 CPU seconds beyond a simple display of the image. *It does not affect the saved data, but only the appearance of the displayed imaged.*
2. override the flat-field to be used in the "on-the-fly" processing. You must pull-down the proper filter name *prior to the start of readout* - in some cases, the proper flat-field may not be available for the filter you are using, but a recommended alternative can be used (noted with the "→" sign).
3. postpone the display until full readout is complete ("Display After Readout Completes") - this option provides a speed advantage when displaying over a network to another computer.
4. change the resolution of the display (Stdimage) to speed up the display process, or to improve the visual look of the display (smaller **imt** numbers make the display faster, but average more pixels together when displaying the image, thereby losing resolution).

5. change the "Node", or name of the computer being used for the display - normally, this is the same computer that the DCA runs on (usually **tan** or **emerald**) and no entry is needed here.
6. preset the primary display parameters (zscale, zrange, z1, z2)
7. select which frame the new frame will be displayed into
8. choose whether the display screen will switch to the frame showing the new data automatically (if you are examining an earlier image, the change to the new picture is disconcerting)
9. adjust the delay before display begins - usually 7% of the picture is enough; the display program must collect some data to determine the data range before showing you the image; otherwise, the image might appear all white or all black, causing great, but unnecessary, concern about the data.

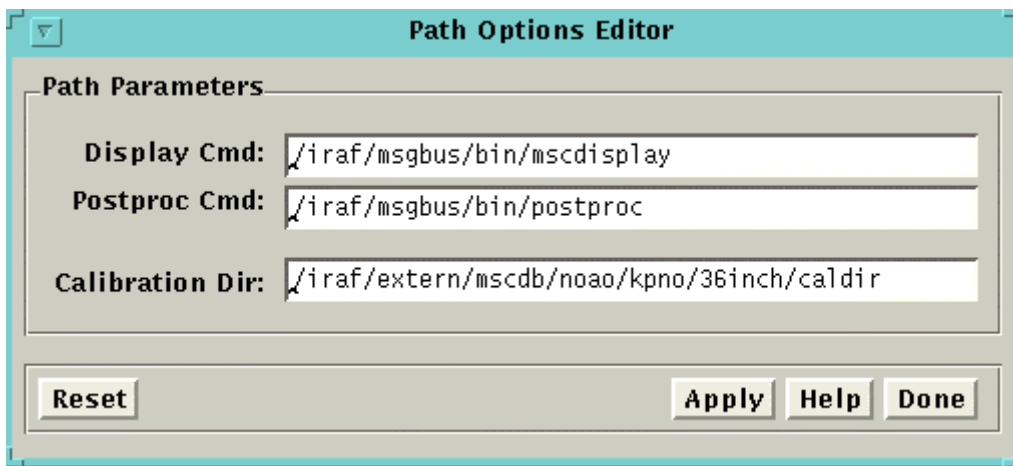


Figure 4.11.3: The Path Options Editor GUI panel for the DCA. This GUI controls the names of commands and locations of files. Normally, you never need to see this panel. If you change the command names for the display task or the postprocessing script, you are flying solo.

In order to calibrate new images as they are being read from the Mosaic on-the-fly, typical biases and flatfield images are kept in a directory. The "Calibration Dir" allows you to change the location where these images are stored. We are developing tools so that the average user can build the specially processed and compressed flat field images used by the display processor. When these are completed, it may be useful to construct your own directory of flats. For now, adjust this parameter at your own risk.

## 4.12. Observing in Binned Mode

Some science programs need the full field of view of MOSAIC, but greatly need to reduce the amount of over-head in taking an image (down to 1:06 from 2:34 for 2x2 binning). If you do not need the full spatial resolution, one way to reduce the over-head is to read-out the CCDs in binned mode. There are other reasons some programs might want to bin their data during readout. In this section we describe how you can switch the binning and provide some additional information on how the operational behavior of the observing system works when using binning.

To set the binning, in the ARCON console (on rush or rust), run **setdet** and be sure to exit setdet with Ctrl-D.

```

                                I R A F
                        Image Reduction and Analysis Facility
PACKAGE = astronomer
      TASK = detpars

(gain =                          2) Gain setting
(xsum =                          2) pixels summed in X direction
(ysum =                          2) pixels summed in Y direction
(ysize =                         8192) Height of centered ROI (full
width)
(pixsize=                        15.) Pixel size in microns
(napixel=                       2048) Detector size in X
(nypixel=                       4096) Detector size in Y
(detname=                       Mosaic1) Detector identification
(mode = ql)
```

After exiting the setdet parameter file with Ctrl-D you should get the following feedback. If it does not appear, most likely you have not successfully changed binning modes.

```
DEBUG -- Starting continuous erase
DEBUG -- Starting continuous erase
DEBUG -- Starting continuous erase
DEBUG -- Starting continuous erase
```

In the example above we have set the binning mode to 2 by 2 by adjusting the *xsum* and *ysum* parameters. To switch back to unbinned mode, run setdet again and reset these parameters. Do not adjust the GAIN mode. After running setdet, subsequent exposures should appear in the desired mode. Check your first exposure to make sure it is the format you desire. We have occasionally seen the setdet task fail to reset the mode. Normally just running the task again will succeed in adjusting the mode, but occasionally you will have to restart the ARCONS and try setdet again.

Please note that several features of the MOSAIC system do not currently work as well when observing in binned mode. These include the following:

- The display processing controlled by the DCA (applying the on-the-fly flat and over-scan, bias, correction) does not work as well. We suggest you turn off this feature.
- The msceamine, which can normally be used to display object shapes and intensities of portions of the image even while the image is being readout, will not work properly. Images of objects which are round will appear pixelated when the "e" (contour-plot) and other options are used.

- The cores of bright/saturated stars are not handled properly and will be negative. These will appear as white "holes" in the centers of these stars when the image is displayed. Photometry of the other objects (lower counts) is not affected.

Remember that you will need to take bias frames and flats in binned mode to go with your binned science frames.

One can also block average the images (MSCBLKAVG) after readout if data volume is the real issue.

---

## 5. Evaluating, Recording, and Reducing Mosaic Images

---

In this section we discuss the software and observing procedures needed for the following:

1. How to evaluate the observations as they are obtained at the telescope, including how to display Mosaic images, how to evaluate the telescope focus, and edit and examine the image headers. We also discuss how to log the observations.
2. How to read and write the data from/to tape.
3. Calibration observations that should be obtained at the telescope
4. How to reduce the images.

Observers familiar with CCD cameras and the IRAF reduction and analysis software will find the processing of Mosaic images to be similar to cameras of more modest size. At the same time, there are a number of important differences that we touch upon briefly here. To start with, Mosaic images are recorded in a special multi-extension FITS format (MEF). In brief, the Mosaic CCDs are saved as individual images grouped together as separate entities in a larger FITS file; only at the end of the reduction are the CCDs assembled as a single large astronomical image. Because of this special format, most IRAF routines will not work directly on the full raw Mosaic files. To provide for processing of the special Mosaic format, as well as reduction and analysis tasks specific to Mosaic, we have developed a set of IRAF routines available under the MSCRED package. Almost all of the software tasks that we discuss below presume that you will be working within this environment.

A key factor that drives both the data taking and reduction of Mosaic images is the presumption that the final astronomical exposure will be built from a number of Mosaic images obtained by dithering the telescope. This places strong demands on the quality of the data reduction to ensure the uniformity of the photometric response of the reduced image.

### 5.1. Working with Mosaic Data Files

An excellent summary of the Mosaic reduction routines is provided in the two guides written by Frank Valdes: [Mosaic Data Reduction System](http://iraf.noao.edu/projects/ccdmosaic/Reductions) (<http://iraf.noao.edu/projects/ccdmosaic/Reductions>) and. **Guide to the NOAO Mosaic Data Handling System** (<http://www.noao.edu/noao/meetings/spie98/mdhs.ps>). We encourage Mosaic users



to read through these documents before attempting to reduce their data. The guides also provide a thorough description of all MSCRED tasks that may be valuable during the night's observing.

The NOAO Mosaic data format produced by the Data Capture Agent (DCA) is a multi-extension FITS (MEF) file. The file contains nine FITS header and data units (HDU). The first HDU, called the primary or global header unit, contains only header information, which is common to all the CCD images. The remaining eight HDUs, called extensions, contain the images from the eight CCDs.

The fact that the image data are stored as FITS format images is not particularly significant. A single FITS format image file may be treated in the same way as any other IRAF image format. The significant feature is the multi-image nature of the data format. This means that commands that operate on images need to have the image or images within the file specified. Only commands specifically intended to operate on MEF files, such as those in the MSCRED package, can be used by simply specifying the file name. Commands that operate on files rather than images, such as copying a file, may be used on MEF files. In general, it is safest to use only MSCRED commands on MEF files. IRAF V2.11 is required to run MSCRED. As of September 1, 2004, we are running IRAF V2.12.2a as well as MSCRED V4.8 on **tan**, **emerald** and **nutmeg**.

The basic syntax for specifying an image in a MEF file to an IRAF task is:

**filename[extension]**

where "filename" is the name of the file. The ".fits" extension does not need to be used. The "extension" is the name of the image. For the NOAO Mosaic data the eight CCD images have the names 'im1' through 'im8' (but the simple '1' through '8' works, too). The extension position in the file (where the first extension is 1) may also be used. To access the global header (for listing or editing) the extension number is 0; i.e. filename[0].

There is currently no wildcard notation for specifying a set of extensions. So to apply an arbitrary IRAF command that takes a list of images you must either prepare an @list (or type the list explicitly) or use the special MSCCMD command. The task MSCCMD takes an IRAF command with the image list parameter replaced by the special string "\$input". The input list of Mosaic files will then be expanded to a list of image extensions. Section 4.3 illustrates the use of MSCCMD with the HSELECT task.

## 5.2. Displaying and Evaluating Images at the Telescope.

During observing, a small set of IRAF commands are commonly used to examine the data. This section describes these common commands. While this

section is oriented to examining the data at the telescope during the course of observing, the tools described here would also be used when later reducing data.

The two commands, `DISPLAY` and `MSCDISPLAY`, are used to display the images in `XIMTOOL`. The `DISPLAY` task is used to display individual images - in this context, the individual CCDs in a Mosaic exposure. There are many display options that are discussed in the help page. The only special factor in using this task with the Mosaic data is that you must specify which image to display using the image extension syntax discussed previously. As an example, to display the central portion of extension `im3` (i.e., `CCD#3`) in the first frame and the whole image in the second frame:

```
cl> display obj123[3] 1 fill-  
cl> display obj123[3] 2 fill+
```

The `MSCDISPLAY` task is based on `DISPLAY` with a number of specialized enhancements for displaying Mosaic data. It displays the entire Mosaic observation in a single frame by "filling" each image in a tiled region of the frame buffer. The default filling (defined by the `order` parameter) sub samples the image by uniform integer steps to fit the tile and then replicates pixels to scale to the full tile size. The resolution is set by the frame buffer size defined by the "stdimage" variable. An example command is

```
cl> msdisplay obj123 1
```

Many of the parameters in `MSCDISPLAY` are the same as `DISPLAY` and there are also a few that are specific to the task of displaying a mosaic of CCD images. The mapping of the pixel values to gray levels includes the same automatic or range scaling algorithms as in `DISPLAY`. This is done for each image in the mosaic separately. The new parameter "zcombine" then selects whether to display each image with its own display range ("none") or to combine the display ranges into a single display range based on the minimum and maximum values ("minmax"), the average of the minimum and maximum values ("average"), or the median of the minimum and maximum values. The independent scaling may be most appropriate for raw data while the "minmax" scaling is recommended for processed data. Another new optional answer here is "auto", which is the default, will try to use the best option, given the status of the data.

There is a new parameter set, too, called "mimpars", which controls the on-the-fly processing. You can select overscan correction, flat-field correction, both, or none.

`MSCDISPLAY` offers a special mode of display not previously available. If invoked before the readout of the Mosaic array is complete, `MSCDISPLAY` will begin painting the `XIMTOOL` screen with as much data as are available at that moment. When automatic gray level scaling is used it will compute the scaling based on the amount of data present when it starts. It will then keep the same scaling for

the number of display and sleep cycles given by the "niterate" parameter after which it will compute a new display scaling and reload all the currently recorded data. Thus a small value for the niterate parameter will update the scaling frequently and a large value will update more infrequently. The trade-off is that calculating the scaling takes a significant amount of time and causes the whole display to be reloaded, while using only the first scaling based on just a little bit of data may result in poor scaling values. Generally, we recommend infrequent updates because of the very lengthy time required to display an entire image. [This use of MSCDISPLAY is only sensible if automatic displaying is disabled from the DCA GUI.]

The MSCDISPLAY task is automatically started when a new image is reading out. The IRAF Data Capture Agent (DCA) controls this default behavior. Whether to display or not is controlled by the DCA user interface, the DCA GUI (see Sec 4.9).

### 5.3. Examining the Data

Once you have displayed the Mosaic exposure, you will need a few more commands specific to Mosaic to interact with the display to do such things as looking at exposure levels, checking the focus, and so on. Just as we have written MSCDISPLAY as a special version of DISPLAY, we provide the MSCEXAMINE routine as an analog of the standard IMEXAMINE to allow for interactive examination of Mosaic images. MSCEXAMINE is essentially the same as the standard IMEXAMINE task except that it translates the cursor position in a tiled mosaic display into the image coordinates of the appropriate extension image. Line and column plots also piece together the extensions at the particular line or column of the mosaic display. To enter the task after displaying an image the command is:

```
cl> msceexam
```

As with IMEXAMINE, one may specify the Mosaic MEF filename to be examined and if it is not currently display it will be displayed using the current parameters of MSCDISPLAY. To modify the radial plot parameters in MSCEXAMINE, type:

```
cl> rimexam2
```

which is analogous to "rimexam" for IMEXAMINE. Or, you can use the "approved" mechanism for modifying parameters within the "?EXAM" tasks by typing "g" to switch the focus of the mouse cursor to the graphics window ("i" gets you back to the image) and typing ":e" to edit the parameters of the sub-task being execute.

For evaluating focus sequence exposures you may use MSCEXAMINE or MSCFOCUS. With the former you measure individual widths and keep track of the focus values yourself. With MSCFOCUS, which is a Mosaic version of KPNOFOCUS, you mark the top exposure (on any CCD) for each star and the task measures all the exposures in the sequence and estimates the best focus value using

information recorded in the data file. To run MSCFOCUS on a displayed exposure just give the command (with a file name it will display the exposure if needed):

```
cl> mscfocus
```

To measure pixel statistics you may use MSCEXAMINE or MSCSTAT, a Mosaic version of IMSTAT. MSCSTAT runs IMSTAT on each of the selected extensions in a list of Mosaic files. To restrict the measurement to a region you use image sections which apply to all of the selected extensions. For example, to measure statistics at the center of a set of observations the command would be something like:

```
cl> mscstat *.fits[900:1200,2000:2300]
```

There was some discussion earlier concerning use of generic image tasks with the NOAO Mosaic data. The tasks IMHEADER and HSELECT fall into this category. The two important points to keep in mind are that you must specify either an extension name or the extension position and that the headers of an extension are the combination of the global header and the extension headers.

Often one does not need to list all the headers for all the extensions. The image title and many keywords of interest are common to all the extensions. Thus one of the following commands will be sufficient to get header information about an exposure or set of exposures:

```
cl> imhead obj*[1] l- # Title listing
```

```
cl> imhead obj123[1] l+ | page # Paged long listing
```

```
cl> hselect obj*[1] $I,filter,exptime,obstime yes
```

If you need to list header information from all the extensions then you need to take the additional step of creating an @file. For example to get the default read noise and gain values for each CCD:

```
cl> imextensions obj123 > list123  
cl> hselect @list123 $I,rdnoise,gain yes
```

Rather than create an @list you can use MSCCMD:

```
cl> msccmd 'hselect $input $I,rdnoise,gain yes'
```

The CCDLIST task in the MSCRED package is specialized for the Mosaic data. It provides a compact description of the name, title, pixel type, filter, amplifier, and processing flags. By default, it lists all the extensions, but the "extname" parameter may be used to select a particular extension. Because all extensions should

generally be at the same state of reduction it may be desirable to list only the first extension. Like most of the CCD reduction tasks you can also select only a certain type of exposure for listing. Examples of the two modes are:

```
# Summary for all exposures
cl> ccdlist *.fits extname=im1
# Summary for all object exposures
cl> ccdlist *.fits extname=im1 ccdtype=object
# List of all extensions.
cl> ccdlist obj123
```

## 5.4. Recording Mosaic Data

Recording your data to tape consists of allocating the tape drive and using MSCWFITS to write the Mosaic format files to a FITS format tape. Every exposure produces 135 Mbytes of raw data, and so, after a good night, an observer may have 100 images, or 13.5 Gbytes of data. Writing this volume of bits consumes a great deal of time and tape, comparable to more than 5 hours and 3 Exabyte 8505 tapes (possibly only 2 tapes if compression is used). We offer a DLT-7000 tape drive at both the 4-m and 0.9-m, and a drive is available downtown for those needing to transfer tapes to other technologies. The DLT-7000 can write tapes about 3 times faster than the Exabyte 8505 and the tape cartridge holds 7 times the data volume. While tape cartridges cost \$70, they can hold roughly 3 nights of data. In addition, we also offer DDS-4 DAT drives at the 4-m and 0.9-m, which can hold up to 30 Gbytes (compressed) on a \$25 tape, and can write an image in 40 seconds. As an alternative, we also offer two Exabyte 8505-compatible (actually, Eliant 820) drives at both telescopes. For ease of portability we also offer DVD writers on **tan**, **nutmeg** and **emerald**. While all media can be purchased on Kitt Peak, it is cheaper to bring your own. Prices are as follows: Exabytes = \$5, DDS-4 Dat = \$25, DLT = \$70, CD = \$1, DVD = \$2.

### Tape Drives and Device Names at the KPNO 4meter and WIYN 0.9m

| Computer        | IRAF Name | UNIX Name | Description |
|-----------------|-----------|-----------|-------------|
| Nutmeg (KP4m)   | mtb       | /dev/nst1 | EXABYTE     |
| Nutmeg (KP4m)   | mtc       | /dev/nst0 | DDS4-DAT    |
| Nutmeg (KP4m)   | mta       | /dev/nst2 | DLT-7000    |
| Tan (KP4m)      | mtb       | /dev/nst0 | EXABYTE     |
| Tan (KP4m)      | mtc       | /dev/nst1 | DDS4-DAT    |
| Emerald (W0.9m) | mtb       | /dev/nst1 | EXABYTE     |
| Emerald (W0.9m) | mtc       | /dev/nst0 | DDS4-DAT    |
| Emerald (W0.9m) | mta       | /dev/nst2 | DLT-7000    |

## 5.5. The Reduction of Mosaic Images

The reduction of Mosaic camera images at first glance is just like that of any other CCD camera, ignoring the immense amount of data contained in a single Mosaic image. As is standard for other cameras, reduction requires overscan correction, followed by zero and flat field corrections. In detail, however, full reduction of Mosaic data requires a number of steps not normally encountered in the routine reduction of other CCD camera images. The driving factor in Mosaic reduction is the expectation that the observer will not simply obtain a single Mosaic exposure of an astronomical field, but may want to construct a deep integration from several Mosaic images spatially offset or "dithered" from each other to cover both the gaps between the individual CCDs and any defects. Stacking dithered Mosaic images places high demands on the uniformity of the initial data reduction as well as requiring several additional steps once the basic reduction of the individual exposures is complete. See [Buell Jannuzi's Draft Guide to NOAO Deep Wide-Field Sruvey MOSIAC Reductions](http://www.noao.edu/noao/noaodeep/ReductionOpt/frames.html) (<http://www.noao.edu/noao/noaodeep/ReductionOpt/frames.html>) for more information on Mosaic data reductions.

The Mosaic camera also has a spatially variable pixel scale that has important implications for ensuring a uniform photometric zeropoint in the reduced images.

## 5.6. Calibration Data to Obtain At the Telescope

Good data reduction begins with obtaining good calibration data at the telescope. Dark frames may be required, but usually not. It is safe practice to obtain darks with exposures similar to your science images. Dome flats provide basic flattening of the frames to 1% or so, but night sky flats or illumination corrections likely are required to produce images that can be stacked without introducing obvious artifacts. Using night sky flats, we can flatten images to 0.1%; twilight flats do not appear to work quite as well as dark sky flats due to regions of variable thinning that cause slightly wavelength-dependent features, but they work better than dome flats.

The default Mosaic dither pattern is a sequence of 5 exposures designed to insure at least 80% coverage for all portions of an astronomical image, given the gaps between the CCDs

Finally, good astrometry is required to register and stack the Mosaic images. We have derived solutions for most filters, but the scale varies slightly with color, so you may want to image an astrometric field if you are using your own filters. Our experience indicates that the array is geometrically very stable.

## 5.7. Basic Reductions

Almost all of the basic image reduction is done under the IRAF MSCRED package. Before you get started, you should be aware that the Mosaic multi-extension FITS data format means that you will have to be careful to stick to the routines in MSCRED that can handle this format. In many cases, useful routines from CCDRED have been rewritten with the same name to be available in the MSCRED package. IRAF routines in other packages can be used on one CCD at a time either in scripts or the command line, but will not work directly on an entire mosaic image at once. There is an MSCCMD routine that acts as an interpreter, allowing you to use traditional IRAF routines on the Mosaic files if you need to use additional IRAF routines.

One of the first things that you're likely to do is to stack sequences of zero, dark, and flat exposures to produce "superimages" to feed into CCDPROC. On the assumption that the darks and zeros are all the same, using ZEROCOMBINE and DARKCOMBINE presents no complications. On the other hand, you are likely to want to scale the flats by their modes, and this at present can be tricky. Because of the importance of image defects, modes and other statistics can be biased by bad values. Normally, a bad pixel mask will be available in the Mosaic database to improve the situation. If you are after the ultimate in flat-fielding, you can (1) estimate the mode in two passes, where the first pass restricted the range of allowable pixel intensities to "plausible" values, and (2) the second pass used the mode from the first pass to limit the range of allowable values to between zero and twice the initial mode.

With good zero, dark, and flat field images in hand, the basic image reduction is done with the MSCRED version of CCDPROC. If your data consists of a dither-sequence that you intend to stack later, we recommend that you do not interpolate over bad pixels; this is more logically done downstream, as we discuss later. One of the last basic steps that you may attempt is to build a sky flat or illumination correction from a portion of your reduced data. You could try going directly to a sky flat without any prior reduction with a dome flat (or any other serviceable flat), but working with roughly-flattened data first allows for more accurate estimation of the mode in the presence of faint astronomical sources, and further allows for better detection and rejection of biased regions of the images. At the same time, flat field reductions will produce wild values in the few defect regions, so extra care is required when estimating modes or other statistics from flattened data.

## 5.8. The Variable Pixel Scale and Zero Point Uniformity

A key assumption in traditional reduction of CCD images is that the pixel scale is uniform and that a properly reduced blank sky image will have a uniform and flat appearance. This is not correct when the pixel scale varies over the field. In the case of Mosaic, the pixel scale decreases approximately quadratically from the field center, with the pixels in the field corners being 6% smaller in the radial direction,

and 8% smaller in area, given the complete astrometric description of the field. Pixels in field corners thus would properly report only 92% of the sky level seen in the field center, even with uniform sensitivity. At the same time the same number of *total* photons would be detected from a star regardless of how many pixels the PSF would be distributed over. Forcing the sky to be uniform over the image would have the deleterious effect of causing the photometric zeropoint to vary from center to field corners by 8%. Note that this effect is different from vignetting, where the flux actually delivered to the image margins is less than that at the center, an effect that is corrected by the flat field.

In practice, the photometric effect of the variable pixel scale can be ignored provided that the reduced images will be part of a dither-sequence to be stacked later on. As discussed below, prior to stacking the images, they first must be re-gridded to a tangent-plane projection, which has pixels of essentially constant angular scale. This is done with the MSCIMAGE task, which re-grids the pixels and has a "flux conservation" option that can scale the pixels photometrically by the associated area change. If this function is disabled, then "improperly" flattened images will have a uniform zero point restored with this option turned off. In short, the flat field already adjusted (if inappropriately) for the different pixel sizes, so MSCIMAGE would then do no further adjustment. Stars would be too bright in the corners of the flattened images, but after re-gridding, their total fluxes would be scaled down to the appropriate values.

If the Mosaic images are to be analyzed individually, however, as might be done for standard star fields, then after the flat field reductions are complete, the differential scale effects must be restored. The correction process is simple; the scale at any point in the Mosaic field is already known from the astrometry, so one could just calculate and multiply by a correction surface. The final image would appear to have a variable sky level, but would be photometrically uniform. We also note that performing surface photometry on Mosaic images with their native sampling can cause biased results unless care is taken to track the changes in the pixel scale.

## 5.9. Stacking Mosaic Images

In many ways the real work of reducing Mosaic data comes when preparing to stack the images to make a final deep image free from gaps and artifacts. Not only is there a premium on having well-flattened data to begin with, but one must also understand the relative photometric and sky level variations among the images in a dither-set. At any point in the final stacked image, different frames will be making differing contributions. Any differences in scaling will produce noticeable artifacts in the final sky background or zeropoint. In practice we have found that the stacking works beautifully with data obtained under clear conditions and with no bright stars near the fields; on the other hand we have found that simple reduction strategies produce very poorly stacked images if the shape of the sky over the field or scattered light contributions varied over the course of a dither-sequence (or over the course of the night used to define the sky flat).



The first step in stacking the reduced Mosaic images is to register them to a common coordinate system. This is done with the MSCZERO and MSCCMATCH programs. The MSCZERO routine can be used to set the coordinate system origin for any given image, given a known position or even *ad hoc* position for any star. MSCCMATCH produces a revised astrometric solution for each dithered image; this is essential because of small linear shifts during the dither process, and because of rotations introduced by differential atmospheric refraction across the field.

There are three important uses of MSCZERO. The first is to set the coordinate zero point fairly accurately and then read back coordinates. With a reference star one can obtain useful "real-time" coordinates at the telescope. The second use of MSCZERO is to identify a list of stars in one "fiducial" image that will be located in the other images in the dither-set. A third use is to reset the origins of the other images in the dither-set to match the fiducial image in the event that the coordinate origin is lost or corrupted (as happened a few times in our reductions). The MSCZERO routine uses the known astrometric description of the Mosaic field so that the location of any star identified can be used to set a global origin. In passing, we note that the quality of the astrometric solution is excellent; stars can be located to a fraction of a pixel (0.26" at the 4-m) in all portions of the field.

MSCCMATCH uses the astrometric solution and recorded relative telescope offsets to locate the registration stars in a given image (it can also be assisted by running the images through MSCZERO if this assumption fails for some reason). Once a given star is located, it is cross-correlated with the same star in the fiducial image to calculate a positional offset. You have the option to review the quality of the match to decide if it is acceptable. The final offset is the average of the individual offsets, with a check for outliers. This interactive approach gives the best confidence that the correct offsets are being used, but the entire process can be run in an automated fashion. Also, MSCCMATCH can access a position catalog and interactively display the known stars on the Mosaic image to provide a totally independent solution for each dithered frame.

The penultimate step in stacking Mosaic images is to re-grid them into *common* tangent-plane projections using MSCIMAGE. The use of a common projection aligned to the centers of the pixels is done so that the shift and stack step does not require any further re-sampling. Up to this point the individual CCD images are each stored in their own partition in the multi-extensions FITS files. MSCIMAGE "pastes" the individual CCDs into a large single FITS image, accounting for their accurate relative positions and rotations, given the astrometric description of the field. MSCIMAGE further re-grids the pixels into a tangent-plane projection, which yields pixels of essentially constant angular size over the extent of the Mosaic field. This is also the best point to fold in knowledge of the bad pixel map. The bad pixel map itself can be re-gridded by MSCIMAGE, giving the final routine, MSCSTACK, complete knowledge of where the bad pixels are. If the bad pixels had been replaced prior to this point, and had not been flagged in the Mosaic images themselves, their locations would have been unavailable in the final stacking.

[Some of us prefer to clear out the bad pixels right at the beginning of the CCDPROC process.]

Re-gridding the Mosaic images requires a method to calculate new pixels interpolated from the original ones. One can select from any number of the standard IRAF interpolation routines; however, given the immense quantity of the data involved, we have always selected bilinear interpolation for speed considerations. Unfortunately, bilinear interpolation smoothes the noise slightly, and as the new pixel grid beats against the original grid, the noise in the tangent-plane image shows bands of coherent noise structure. This will be reduced somewhat in the final stacked image, given the spatial de-coherence of the images in the dither-set. Choosing the "sinc" interpolator significantly reduces the coherence but takes several times longer to process, and may introduce a characteristic ringing around bad pixels. Lastly, as noted above, MSCIMAGE has the option to correct the flux in the re-gridded pixels for the variable pixel scale. Use of this option should only be invoked when this information is preserved in the flattened images to begin with.

The final step is to combine the re-projected dither-set images using MSCSTACK. This is the stage where careful attention must be paid to variations in zero point and sky level among the images. Even on photometric nights, the sky level is likely to change over the course of the dither-sequence. You can use the image modes to track the sky level, but again, one must be careful that the mode is not biased by bad pixels and defects. You can, for example, calculate the average sky level for a dither-sequence and then give MSCSTACK a file specifying additive offsets for each image about this average. At this stage you should also account for any photometric variations among the images. MSCSTACK can also accept a file of multiplicative offsets. These might be based on an atmospheric extinction curve on photometric nights, or determined by comparing stars among the dither-set. Or, you can specify a relatively representative image section and have MSCSTACK compute the modes.

The final stacking of the image by MSCSTACK can be done with any of the standard combining algorithms within the IRAF combine tasks. Some of us prefer to use an average value with sigma rejection; we also make complete use of the bad pixel map at this stage to eliminate known defects. One might be tempted to use a simple median, but in the limiting case of a large number of images this will only yield ~80% of the signal-to-noise available from an average. On the assumption that most vectors of pixels to be stacked will be valid, an average (with occasional rejection) gives the best answer.

Going all the way through to this stage has produced final stacked images of variable quality, depending on the conditions of the observation. In non-photometric conditions the sky may not be flat; further, scattered light from nearby objects may affect the sky over large areas - unfortunately, the pattern of scattered light varies as the telescope is dithered. A further complication is that computation of an average mode for an image may be affected by scattered light that affects only a small

portion of the Mosaic field. At this time we are still working on a solution for stacking images of this type; the solution is likely to require fitting and subtracting a sky surface to the individual Mosaic images prior to feeding them to MSCSTACK. When conditions are favorable, however, we have produced beautifully flat-stacked images free from defects, showing the full scientific potential of Mosaic camera, and providing a suitable reward for our hard work.

## 5.10. A Simplified Summary of the Processing Steps

George Jacoby contributes the following sequence. It represents as simple a sequence as makes sense for dithered Mosaic images taken under good conditions.

- I.CCDPROC - to correct for cross-talk, trim overscan, bias subtraction, and flat-fielding.
- II.MSCZERO - apply a uniform astrometric zeropoint to all images of all colors in a sequence, dithered or not. Identify a star in each frame and set its zeropoint to be identical.
- III.MSCZERO - using the "w" key, identify 10-20 stars per CCD in one of the frames in the sequence.
- IV.MSCMATCH - correct for rotations and minor zeropoint offsets. I run this interactively to be sure the solutions are good.
- V.MSCIMAGE - select a single image that will serve as a reference for all other images of this field. All other images will then have the correct geometry for stacking and later comparison.
- VI.MSCSTACK - add up the dithered sets
- VII.IMCOPY - up to this point, you have created single images constructed from the 5 or more images in each of the dithered sets. Because each image stared at a different piece of sky, there will be offsets between the images, and each image may have a unique size. I use IMCOPY to select a region of each image that is common to all images. In effect, IMCOPY provides a fast method to shift all the final images to a common astrometric system using integer pixel shifts. You may also use IMSHIFT to apply a fractional pixel shift, but this introduces another interpolation that I have not found necessary.

---

## 6. Appendix A: Miscellaneous Software Commands

---

### Parameter Sets and Related Commands

**newpset** unlearn specified parameter sets (“psets”) restoring default values

### General Parameters

**obspars** parameter set (“pset”) containing general observation parameters (picnum, parameters of focus frames, observer, etc.)

**telpars** parameter set containing telescope parameters (not much, though)

### Detector Parameters

**detpars** pset containing parameters of the detector (binning)  
**detector** download detector parameters from detpars to the controller

**setdet** edit detpars and then execute the detector command: **do not use!**

**ccdinfo** list parameters of detector and other interesting information

**kleenex** guarantee that all the “ex” tasks (e.g., muxnex) have shut down

### Instrument Parameters

**instrpars** pset containing instrument parameters (filter, telescope focus, etc.)

**wheel1** pset containing filter names and related information  
**motor** move motors in the instrument or read current positions: Includes

**motor move** move motors prompting the user for the required positions

**motor go** move motors to the positions specified in instrpars

**motor status** list current positions of motors

**motor enable** disable/enable movement of individual motors

**motor init** initialize filter wheel names

**instrument** “ICE”-like synonym for "motor move"

### Additional Commands for support staff

**connect** establish the connection between the IRAF UI and

|                         |  |
|-------------------------|--|
|                         | Arcon controller   |
| <b>disconnect</b>       | break the connection between the IRAF UI and Arcon controller                                  |
| <b>reconnect</b>        | break and re-establish the connection between IRAF and Arcon                                   |
| <b>send</b>             | a command to the detector controller (Arcon)   |
| <b>pconv</b>            | send a command to picread/picfeed  |
| <b>arsh</b>             | send a command to arsh/clarsh  |
| <b>mux</b>              | send a command to muxnex   |
| <b>fhdr</b>             | send command to fitsheader server  |
| <b>shutter</b>          | Command Arcon to open/close the shutter  |
| <b>gwcopen</b>          | establish the connection between IRAF and the instrument                                       |
| <b>gwcclose</b>         | break the connection between IRAF and the instrument   |
| <b>gwcsend</b>          | send a command to the instrument controller  |
| <b>mseshutter</b>       | Command the instrument controller to open/close the shutter and set the shutter ready position |
| <b>mailtemps off</b>    | disable temperature warning emails   |
| <b>mailtemps on</b>     | enable temperature warning emails  |
| <b>mailtemps status</b> | reports whether the temperature warning emails will be sent (on) or not (off)                  |
| <b>savewheel1</b>       | entered into an xterm window this saves the current filter list                                |

---

## 7. Appendix B: Differential Refraction

---

With the wide field of the Mosaic imager, one should be aware of the special conditions imposed by differential atmospheric refraction during exposures. [Gary Bernstein motivated this section.]

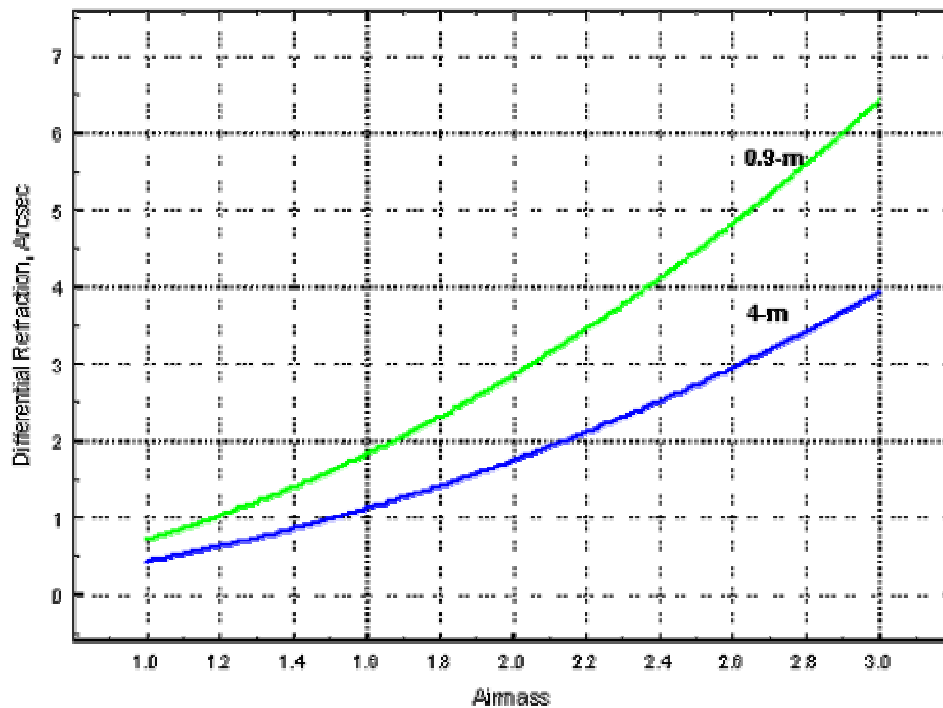


Figure B.1: This plot shows the differential prismatic distortion due to atmospheric refraction over the extent of the Mosaic field. The difference in angular displacement of a star between the center and corner of the Mosaic array is shown as a function of airmass for the 4m and 0.9m cameras. Note that this effect does not vanish at the zenith, as even the angular extent of the Mosaic field at the zenith is large enough for differential prismatic distortion to be present. The particular curves shown are for an STP atmosphere. The actual displacement will vary with temperature, and in general will be slightly lower, given the altitude of KPNO. The prismatic distortion will also occur only parallel to a vector pointing to the horizon; the “center-to-corner” displacement is thus meant only to be representative of typical angular distances within the Mosaic field. Note that as a Mosaic field transits a range of airmasses, as might occur in a dither sequence, the differential prismatic distortion will vary over the sequence.

---

## 8. Appendix C: Issues About Photometry

---

A common goal of observing with Mosaic is to derive photometric magnitudes for many objects. Due to the wide field and multi-CCD nature of Mosaic, though, there are several issues that may affect the accuracy of one's results, and in particular, the hope of achieving 1% photometry.

**CCD-to-CCD sensitivity differences:** While flat-fields remove the gross sensitivity differences across the CCDs, each CCD exhibits its own spectral response. Relative to the B-band, U sensitivity varies by up to 10% and V by 5% from CCD to CCD. Consequently, the color terms for one CCD are not applicable to data taken with another CCD. At a minimum, therefore, one must know the color terms for each CCD. But there is another quirk: if data are taken in "dithered" mode, then some stars may have been exposed across several different CCDs, each with different spectral properties. Photometry from the stacked image will be sensitive to the combination of color terms.

**Variations in spectral characteristics on a single CCD:** even across a single CCD, there are variations in sensitivity approaching 4% (U relative to B). This problem, though, is not new; the old TI and Tektronix CCDs also exhibit variations almost as large.

**Shutter corrections:** The large shutter for Mosaic is not perfectly accurate. That is, a command for a 1 second exposure will not open the shutter across the entire array for exactly 1.000 seconds. As of November 2003, a 1 second exposure held the shutter open for 0.97 seconds at the top of the array and 0.96 seconds at the bottom. This effect can be measured and calibrated out, but it can also be avoided with longer exposures since the shutter error is a constant offset in time.

---

## 9. Appendix D: Flat-Field Exposures

---

Typical Dome flat-field exposures for each filter are given below. These exposures should produce pictures having 5,000-10,000 ADU per pixel to stay within the linear regime (note that each ADU represents ~3 electrons, so there is plenty of signal with these recommendations. To minimize thinking at the telescope, we tried to use the maximum voltage settings when possible (4m: 53V; 0.9m: 100%).

**Flat Field Lamp Settings and Exposure Times**

| Filter   | 4meter       |               | 0.9m         |               |
|----------|--------------|---------------|--------------|---------------|
|          | Lamp Setting | Exposure Time | Lamp Setting | Exposure Time |
| U        | High 53V     | 8s            | High 100%    | 10s           |
| B        | Low 53V      | 18s           | Low 100%     | 18s           |
| V        | Low 53V      | 12s           | Low 100%     | 8s            |
| R        | Low 53V      | 12s           | Low 100%     | 5s            |
| I        | Low 53V      | 15s           | Low 100%     | 6s            |
| Halp     | High 20V     | 9s            | Low 100%     | 6s            |
| Halp +4  | High 20V     | 8s            | Low 100%     | 60s           |
| Halp +8  |              |               | Low 100%     | 60s           |
| Halp +16 | High 20V     | 9s            | Low 100%     | 60s           |
| OIII     | High 53V     | 2s            | High 100%    | 3s            |
| OIII+29  |              |               | Low 100%     | 28s           |
| g'       | Low 53V      | 10s           | Low 100%     | 4s            |
| r'       | Low 53V      | 12s           | Low 100%     | 5s            |
| i'       | Low 53V      | 18s           | Low 100%     | 6s            |
| z'       | Low 53V      | 22s           | Low 100%     | 11s           |
| Wash M   |              |               | Low 100%     | 3s            |
| DD051    | High 20V     | 35s           | Low 100%     | 18s           |
| VR       | Low 53V      | 8s            |              |               |
| Bw       | Low 53V      | 15s           |              |               |
| wh       | Low 53V      | 3s            | Low 50%      | 5s            |



---

## 10. Appendix E: Frequently Encountered Problems (FEP)

---

Listed below are some problems that have been seen with Mosaic. In some cases, we have known solutions; in other cases, the solutions are more magical.

### 10.1. Mysterious messages appear and pictures cannot be taken.

Occasionally, the Arcon controllers get into a weird state. See section 4.4 for recovery procedures.

### 10.2. Data Doesn't Show Up on Reduction Computer.

Occasionally, and we don't yet understand why or when, the Mosaic reads out but the data fails to transfer to the reduction computer. If you act now, you may be able to save the picture. Restart the DCA on **tan/emerald**. Type "recover" on the acquisition computer (**rush/rust**) in the IRAF data-taking window. [We have only seen this problem very occasionally when the Arcons are restarted multiple times.] Unfortunately, "recover" generally will not salvage a readout that hangs after only a portion of the image has been readout.

### 10.3. "Echo" Images in adjacent CCD: "Cross-Talk"

Due to electrical cross-talk between the CCD pairs controlled by a single Arcon controller (each Arcon runs 2 of the 8 CCDs), the data stored for one of the CCDs in each pair has an echo of the other. Specifically, the stored pixel values for the affected CCD are the true values plus a very small fraction of the counts measured in the paired CCD. The effect is most noticeable for saturated and nearly saturated stars (>20,000 ADUs), whose echoes appear at the 10 to 30 ADU level in the second CCD. For Mosaic-1 we see echoes in CCDs #1, 3, 6, 8 arising from the CCDs #2, 4, 5, and 7 respectively. CCDs 2, 4, 5, and 7 show no sign of a matching echo from their paired CCDs. The Mosaic-2 has similar cross-talk between amplifiers, but in a more complex matching due to the 16-amp readout. For both instruments these echoes can be effectively removed with the CCDPROC "xtalkcor" option turned on. While the magnitude of the cross-talk is generally stable, it does change on relatively long time-scales. We have a library of past xtalk coefficients used for the correction process available in IRAF (in msbdb\$) and at <http://www.noao.edu/noao/mosaic/mosaic/calibs.html>. It is possible to calculate your own set of new coefficients from your own data using the xtcoeff task in the mscred package of IRAF. One can also adjust the provided files slightly and reprocess, checking the residuals until they are smaller than the noise in the image. A more complete discussion of how to determine your own coefficients will be included in a

future update or you may contact Buell Jannuzi at [jannuzi@noao.edu](mailto:jannuzi@noao.edu) for more information.

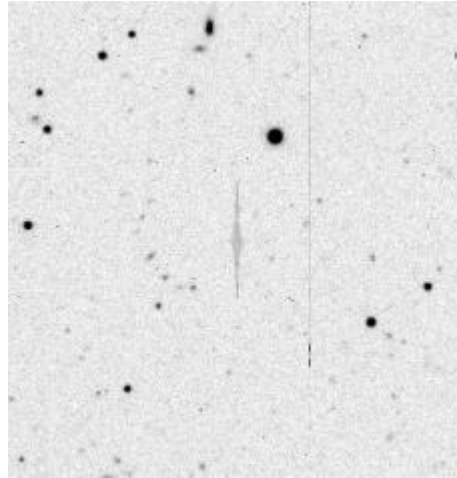


Figure 10.3.1: A sample "echo" appearing in CCD #3 from a saturated star in CCD #4.

#### 10.4. Bad Rows in All CCDs

We are occasionally seeing images in which one or more bad rows appear in all the CCDs. An example is shown below in Figure 10.4.1. The cause is unknown but common to both Mosaic systems (KPNO and CTIO). Not much can be done with the images to fix them, but a subsequent median, say from a dithered sequence, ought to reject outlying pixels.

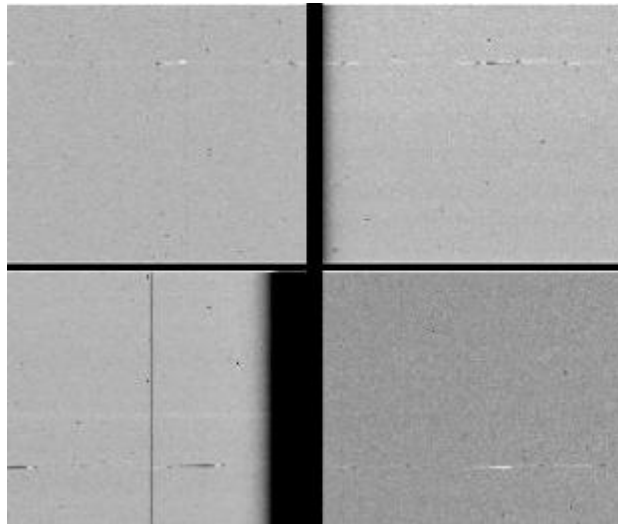


Figure 10.4.1: A region of a mosaic image from CCDs 3 and 4 (bottom) and 7 and 8 (top) showing a series of bad rows. CCD 3 has a bad column down the middle. The bad rows are about a quarter of the way from the bottom of CCDs 3 and 4, and a quarter of the way from the top of CCDs 7 and 8.

## 10.5. Calibrating the CCD Voltages at the Start of a Block

CAUTION: The following procedure should only be performed by NOAO technical staff. A typing error can easily leave the Mosaic system in an unusable state!

At the start of a run, or if the ambient temperature has changed more than about 10 degrees C, it is necessary to calibrate the Arcon boards. If you don't do this, then subsequent Arcon restarts will take an extra 5 minutes or so.

From the ARCON Console window, type:

```
arsh> all video calibrate input
```

This may take up to 6 minutes. Then type the following sequence:

```
arsh> b1 video report
```

```
arsh> b2 video report
```

```
arsh> b3 video report
```

```
arsh> b4 video report
```

[The "b" numbers refer to the Arcon box numbers.] After each command, review the line that starts with "coarseinput(0)". There are 4 numbers, for which 2 will be exactly 0 when running in 8 channel mode. The other 2 numbers should be around 3000.

Now, edit the file on RUSH called /data1/4meter/.arshrc or /data1/36inch/.arshrc, which, near the bottom has a set of lines like:

```
b1 video calibrate input 3092307732053218
```

```
b2 video calibrate input 3085306230513208
```

```
b3 video calibrate input 3027311230343047
```

```
b4 video calibrate input 3264325430463031
```

Change the non-zero numbers for each of the 4 lines and restart the Arcons. The next time the Arcons are started, the automatic CCD voltage calibrations will begin with these approximate values, and should take less time to process.

## 10.6. The ADC does not seem to be reacting fast enough!

The ADC GUI does not respond instantaneously to the motion of the ADC prisms. There is a time delay. If you restart ARCONS the GUI will occasionally not

even show the normal positions of the prisms, but as soon as you turn on either of the non-null modes and/or move the telescope, the display will update. Similarly, you might start an exposure and hear the shutter open before you see the ADC GUI update the positions of the prisms. Be assured the prisms are moved before the shutter opens, it is just the updating of the GUI that is lower priority for the CPU of rush/rust.

### **10.7. Warning message "Warning: 'ared' package not defined" when starting ARCONS.**

When I start-up ARCONS, I see a warning message "Warning: 'ared' package not defined", do I need to worry about this? No, you can ignore this warning.

---

# 11. Appendix F: Rarely Encountered Problems

---

Below are problems that have been seen in the past, but rarely occur these days (if at all).

## 11.1. "Good" Error Messages

Despite considerable detective work, a number of error messages appear during the course of system startup that are completely benign and can be ignored. At this time, only one such error survives:

a) **ERROR -- Unsolicited data or missing data address** -- During an Arcon restart, you will always see 6-8 messages.

b) **WARNING -- Command timed out waiting for sub-command** - This can sometimes be benign, and sometimes serious. It often shows up at the end of a sequence of exposures.

c) **ERROR -- Still processing last command, please WaitForDone** - This has also been seen at the end of a sequence with no serious consequences.

## 11.2. "New" Errors as of September 2000

With the upgraded video processor boards installed during the summer of 2000, several new error messages are available for you to ponder. Generally, these are bad messages, meaning that you have to restart the Arcons to take pictures. But, of course, you should try to ignore them first.

The "Index too small" error is bad. It usually occurs during an Arcon start. Often a few more startup attempts will clear the path to success.

**ERROR -- Index too small: Calibrate**

The SEVERE ERROR shown below is just one of a few dozen that will appear at once. These mean that the CCD has been powered down by the Arcon, thinking that the AC power is suspect. You will not be able to take a picture and an Arcon restart will be needed. Check with someone, though, about that suspect AC power.

**SEVERE ERROR -- B4 Testpoint 3 (LG1) (reading -14.96) is under absolute limit - 6.000000**

### **11.3. Image display fails to complete automatically.**

If the data rate is fast and the DCA computer is busy with other tasks, the display process cannot keep up and falls behind. When taking short exposures of this type, we suggest turning off the "autodisplay" option on the DCA GUI panel. The current default is for the DCA to "kill" the previously running display process.

---