

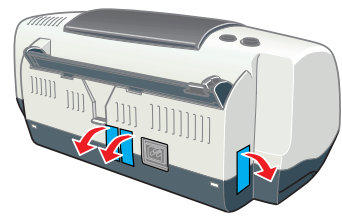
Start Here

EPSON Stylus® C43 Series

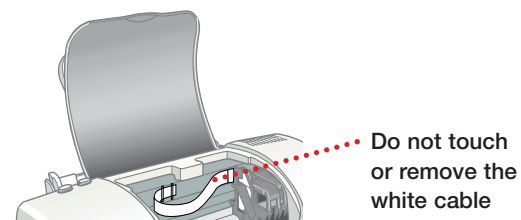
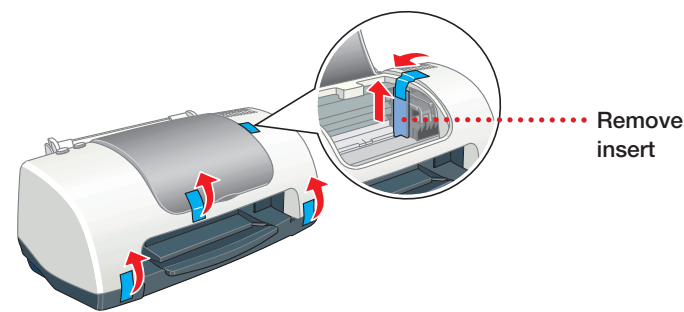
Read these instructions before using the printer.

1 Unpack

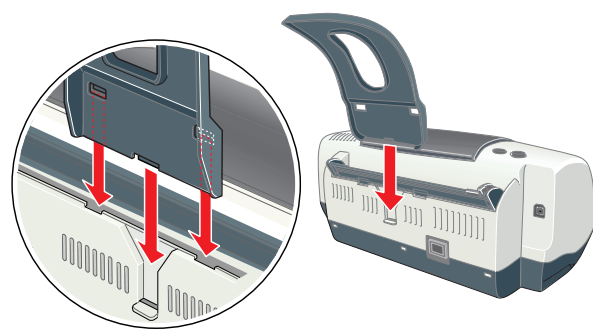
- 1 Remove the tape and packing material from the printer.



- 2 Open the cover. Then peel off the tape and remove the insert. Do not touch or remove the white cable inside the printer.

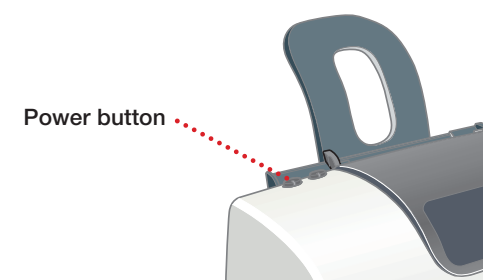


- 3 Insert the paper support into the three slots on the back of the printer.



2 Power On

- 1 Find the power cord that came in the box and connect one end to the printer.
- 2 Plug the other end into a grounded electrical outlet.
- 3 Press down firmly on the power button until the green power light comes on.



Caution: Use only the printer's power button to turn the printer on or off.

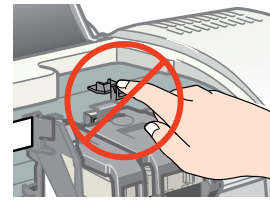
3 Load Ink

Note: The ink cartridges that came with your printer have a lower yield due to the ink loading process. This process is carried out the first time you turn on your printer and guarantees a better performance.

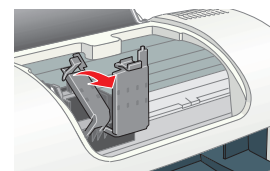
Caution: Keep ink cartridges out of the reach of children and do not drink the ink.

- 1 Open the printer cover.

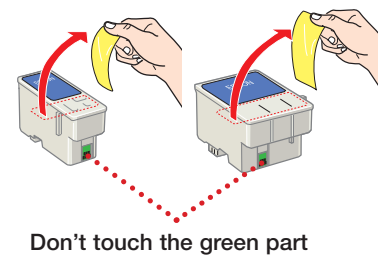
Caution: Don't touch the sensor behind the ink cartridge holders.



- 2 Lift up the ink cartridge clamps.

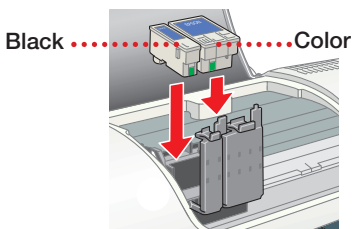


- 3 Unpack the ink cartridges that came with your printer and remove the yellow tape only.

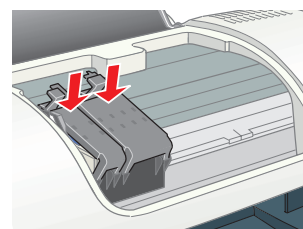


- 4 Insert both cartridges.

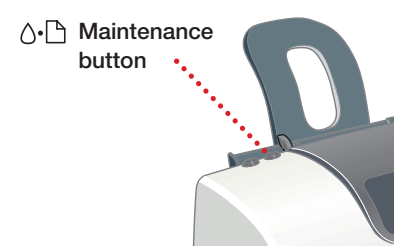
Caution: You must install both cartridges or the printer won't work.



- 5 Press down on the cartridge clamps until they click shut.



- 6 Press the maintenance button. The green power light flashes and you hear the printer charge its ink.



- 7 Close the printer cover. When the green power light stops flashing, charging is done.
- Caution:** Never turn off the printer while the green power light is flashing, or you'll waste ink.

4 Connect the Printer

Note: Turn off your computer before connecting the interface cable. Don't turn on your computer until you are instructed to do so.

Printer cables are not included with your printer. You need only one of the following cables:

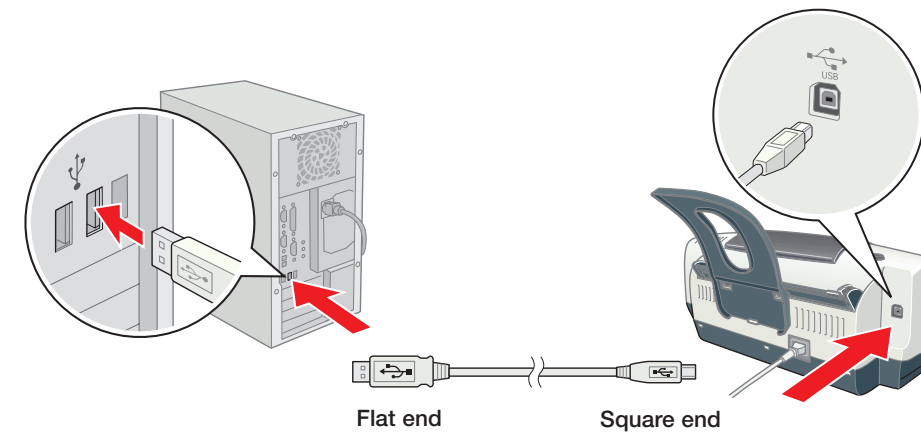
- USB cable (Windows® or Macintosh®) or
- Parallel cable (Windows only)

Note: If you have Windows 95, you must use a parallel cable.

continue

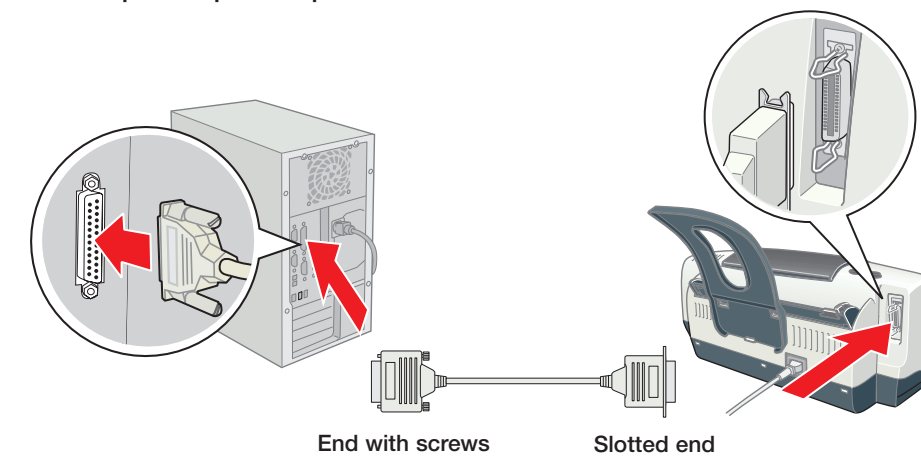
USB Cable Users (Windows or Mac®)

- 1 Make sure your computer is turned off. Keep it turned off until section 6, "Install Software." (Click Start and select your Shut Down or Turn Off option.)
- 2 Plug the square end of the cable into the USB port on your printer.
- 3 Plug the flat end of the cable into any available USB port on your computer.



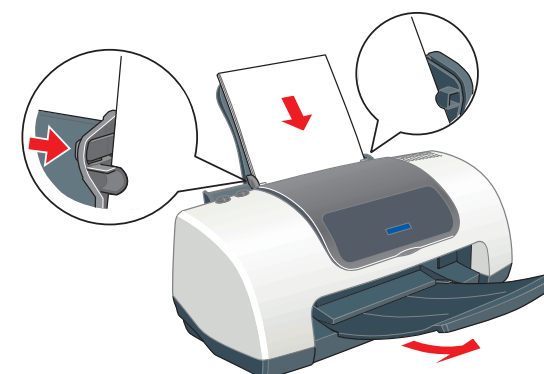
Parallel Cable Users (Windows only)

- 1 Make sure your computer is turned off. Keep it turned off until section 6, "Install Software." (Click Start and select your Shut Down or Turn Off option.)
- 2 Plug the end of the cable with the slotted connector into the parallel port on the side of the printer, then secure it with the wire clips.
- 3 Plug the end of the cable with the screws on the side into your computer's parallel port and secure it.



5 Load Paper

- 1 Set some paper behind the tab on the right edge guide. Don't force it in.
- 2 Press in the locking tab on the left edge guide and slide it against the paper.

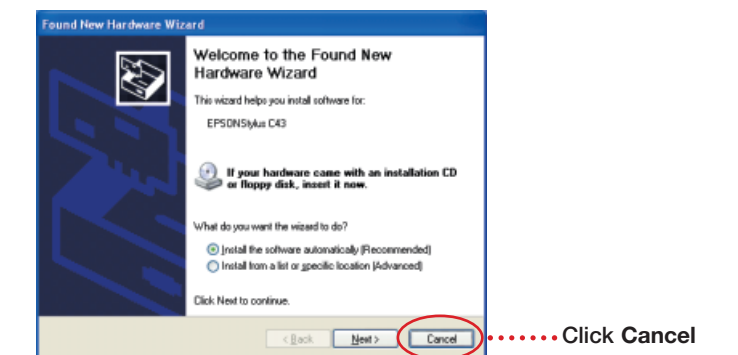


- 3 Pull out the output tray.
- Note:** If you're using special EPSON® paper, make sure you load the brighter, whiter side face up.

6 Install Software

Windows

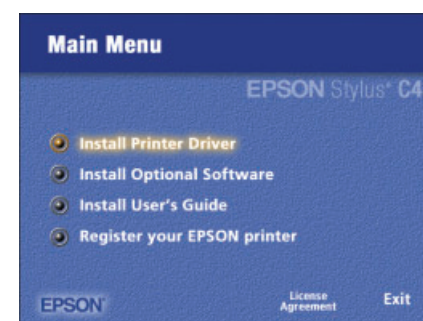
- 1 Make sure your printer is connected and turned on, then turn on your computer.
- 2 When you see the Found New Hardware Wizard screen, click Cancel. (If you're using a parallel cable, you may not see this screen until later.)



- 3 Insert the printer software CD-ROM in your CD-ROM or DVD drive. If you see any other Windows screens, close or cancel them.
- 4 The installer starts automatically. Select English. If the language selection screen doesn't appear, do the following:
Windows XP: Click Start, then click My Computer. Double-click the EPSON CD-ROM icon, then double-click the EPSON icon.
Other Windows systems: Double-click My Computer. Double-click the EPSON CD-ROM icon, then double-click the EPSON icon.

- 5 You see the license agreement. Read the license agreement and click Agree.

- 6 You see the Main Menu. Click Install Printer Driver and follow the on-screen instructions.

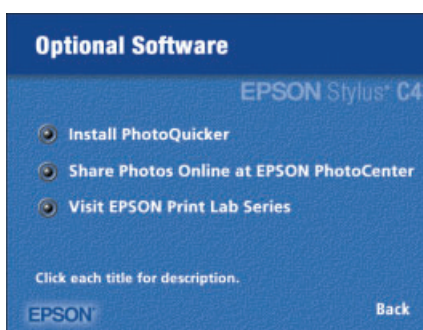


Note: If you see a screen asking you to turn on the printer, make sure the printer is connected and turned on and wait for the computer to detect the printer port.

- 7 At the end of the installation, click OK.

- 8 Click on Install Optional Software.

Select the software you want to install and follow the on-screen instructions.



- 9 When you're done, click Back to return to the Main Menu.

- 10 Click on Install User's Guide, then follow the on-screen instructions to install the printer manual on your desktop.

Note: You need a browser—such as Microsoft® Internet Explorer 4.0 or later or Netscape® 4.0 or later—to view the guide.


- 11 Click on Register your EPSON Printer to register your printer online. When you're done, close your browser and click Exit on the Main Menu to close the installation program and remove the EPSON CD.

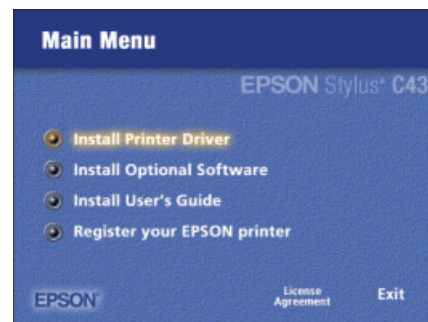
You're ready to print! See your electronic User's Guide for details.


Turn over.....

Macintosh

Note: To print from Macintosh Classic applications as well as OS X applications, follow the steps below in OS X, then restart your Macintosh in OS 9 and follow the steps below again.

- 1 Make sure your printer is connected and turned on. Then turn on your computer.
- 2 Put the EPSON CD in your CD-ROM or DVD drive and wait a few seconds for the CD to be recognized.
- 3 If the CD-ROM window doesn't open automatically, double-click the EPSON CD-ROM icon. Then double-click the  EPSON installer icon.
- 4 Select English.
- 5 You see the license agreement. Read the license agreement and click **Agree**.
- 6 You see the Main Menu. Click **Install Printer Driver**. In Mac OS X, enter your administrator password and click **OK**.

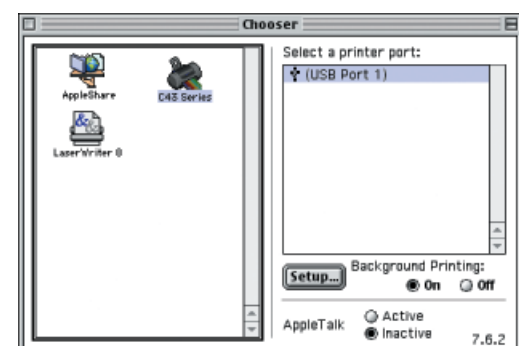


- 7 Follow the instructions on the screen to install the software and restart your Macintosh.
- 8 After your Macintosh restarts, double-click the EPSON CD-ROM icon (if necessary). Then double-click the  EPSON installer. Select **English**.
- 9 Click **Install Optional Software** and follow the instructions on the screen.
- 10 Click **Install User's Guide** and follow the instructions on the screen to install the *EPSON User's Guide* on your desktop.
Note: You need a browser—such as Microsoft Internet Explorer 4.0 or later or Netscape 4.0 or later—to view the guide.
- 11 When you're done, click **Back** to return to the Main Menu.
- 12 Click on **Register your EPSON Printer** to register your printer online. When you're done, close your browser and click **Exit** on the Main Menu to close the installation program and remove the EPSON CD.

Continue with the instructions in the next column to select your printer in your operating system.

Mac OS 8.6 to 9.x

- 1 Open the Apple® menu and select **Chooser**.
- 2 Click the **C43 Series** icon, click your **USB port**, and turn on **Background printing**.

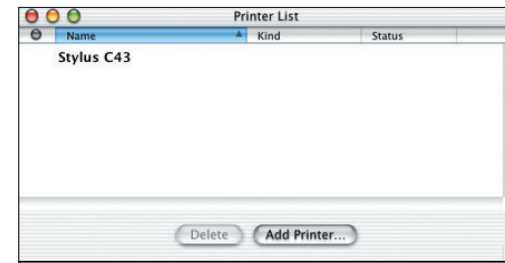


- 3 Close the **Chooser**.

continue

Mac OS X 10.1.x to 10.2.x

- 1 Open the **Applications** folder on your hard drive, then open the **Utilities** folder and select **Print Center**.
- 2 Select **Stylus C43** in the **Printer List** window and click the **Add** or **Add printer** icon.
Note: If your printer does not appear on the **Printer List**, make sure the printer is connected and turned on.
- 3 Select **EPSON USB** from the pull-down menu, click **Stylus C43**, then select **All** from the **Page Setup** drop-down list.



- 4 Click **Add** or **Add printer**. You see the printer list with the Stylus C43.
- 5 Close **Print Center**.

You're ready to print! See your electronic *User's Guide* for details.

Replacing Ink Cartridges





Black cartridge:
T038120




Color cartridge:
T039020

Caution: To ensure good results, use genuine EPSON ink cartridges and don't refill them. Other products may cause damage to your printer not covered by EPSON's warranty.

Low ink The red  error light flashes and a status screen appears telling you which cartridge is low.

Empty cartridge The  error light stays lit and the empty cartridge is indicated on the screen; you must replace it to continue printing.

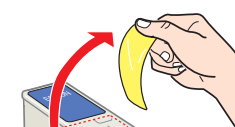
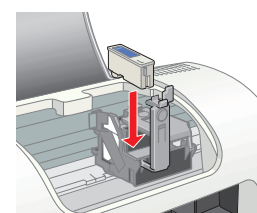
- 1 Open the printer cover and press the  maintenance button for 6 seconds. The print head moves to the cartridge's replacement position. (If both cartridges need replacement, the print head moves to the black cartridge position first.)

- 2 Lift the ink cartridge clamp and remove the cartridge.


- 3 Unpack the new ink cartridge and remove the yellow tape only.



- 4 Insert the new cartridge.

- 5 Press down on the cartridge clamp until it clicks shut.



Don't touch the green part

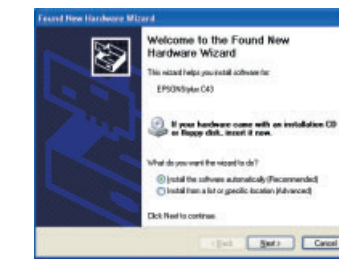
- 6 Press the  maintenance button. (If the other cartridge needs replacement, the print head moves into loading position. Repeat steps 2 through 6.) Then close the printer cover.

- 7 Wait until ink charging is finished (the green  power light stops flashing and the  error light goes out).

Note: Do not remove empty cartridges until you are ready to replace them or the print nozzles may get clogged. Leave the ink cartridges installed when you transport the printer.


Problems?


You don't see the Found New Hardware screen when you install the Windows printer software.



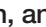
Make sure your printer is on and the interface cable is securely connected to your printer's USB or parallel port.

If you still don't see the screen, pull the interface cable out of the computer's USB or parallel port and reinsert it.

The red  error light is on (nothing prints).

If paper is out, load more paper and press the  maintenance button to resume printing.

If paper is jammed, press the  maintenance button to eject it.

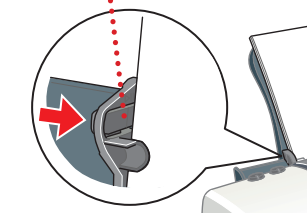
If the paper doesn't eject, turn off the printer, open the cover, and pull the paper out from the front. Then reload paper, turn the printer on, and press the  maintenance button.

Paper jams frequently.

Use new, smooth, high-quality paper.

Don't load paper above this mark

Don't load paper above the arrow mark inside the left edge guide.



Place the paper against the right edge behind the tabs. Slide the left edge guide against it, but not too tightly.

You see banding (light lines) or your printout is blurry or smeared.



The print head nozzles may need cleaning; see the *User's Manual* for instructions.

The ink cartridges may need replacing. See the ink cartridge replacement instruction in the previous section.

Make sure the printable side of the paper is face up. It's usually whiter or shinier.

For more solutions to problems, see your on-screen *User's Guide*.

Getting Help

EPSON provides technical assistance through the electronic support services and automated telephone services listed below:

World Wide Web

From the Internet, you can reach EPSON at <http://www.latin.epson.com>. Here you can download drivers and other files, look at product and troubleshooting information, and receive technical advice through e-mail.

Telephone service

Country	Telephone number	Country	Telephone number
Argentina	(54-11) 4346-0300	Mexico	
Chile	(56-2) 230-9500	Mexico, D.F.	(52-55) 532-84008
Colombia	(57-1) 523-5000	Other cities	(01-800) 506-0700
Costa Rica	(50-6) 210-9555 (1-800) 377-6627	Peru	(51-1) 224-2336
		Venezuela	(58- 212) 240-1111

If your country doesn't appear on the list, contact your nearest EPSON distributor.

Viewing Your Manual


To view your printer manual, just double-click the **ES C43 Manual** icon on your desktop.

If you did not install your manual, follow the steps below to install it:

Windows

- 1 Put the EPSON CD-ROM in your drive.
- 2 Select **English**.
- 3 You see the Main Menu. Click **Install Printer Manual**.

Macintosh

- 1 Put the EPSON CD-ROM in your drive.
- 2 Select the EPSON CD-ROM icon on your desktop, if necessary. Then double-click  EPSON Installer in your CD-ROM window.
- 3 Select **English**.
- 4 You see the Main Menu. Click **Install Printer Manual**.

EPSON Ink and Paper

Use genuine EPSON inks and paper to get the best results from your EPSON printer! You can purchase ink cartridges, paper, and accessories from your local retailer.

Here are three EPSON papers designed to work with your printer:



Premium Bright White Paper delivers crisp black text and vivid, colorful images. It's perfect for everyday printing.



High Quality Ink Jet Paper is ideal for printing all types of documents, including text, photos, digital images, clip art, etc.



All-Purpose Glossy Paper can be used for all of your everyday glossy printing needs. Print colorful photos, presentations, flyers and more on smooth, glossy, bright white paper.