

CONTENTS

1. INTRODUCTION	2
1.1. Technical specifications	2
1.2. System requirements	2
1.3. Package contents	2
2. SOFTWARE INSTALLATION.....	3
2.1. Driver installation	3
2.1.1. <i>Driver installation for Windows 98 SE</i>	3
2.1.2. <i>Driver installation for Windows Millennium</i>	4
2.1.3. <i>Driver installation for Windows 2000</i>	5
2.1.4. <i>Driver installation for Windows XP</i>	7
2.2. Application installation	8
3. SOUND MODULE OVERVIEW.....	10
4. SOUND MODULE CONFIGURATION.....	11
4.1. The Gamesurround Muse Pocket control panel	11
4.2. Audio CD playback	13
4.3. Volume settings	15
4.3.1. <i>Using the volume button</i>	15
4.3.2. <i>Using headphones</i>	15
4.3.3. <i>Optimizing volume in games</i>	15
5. TECHNICAL SUPPORT	16
5.1. Warranty information	16
5.2. Save time by registering your product online!	16

ENGLISH

FRANÇAIS

DEUTSCH

NEDERLAND

ITALIANO

ESPAÑOL

1. INTRODUCTION

1.1. Technical specifications

Data transfer	USB 1.1 or USB 2.0 bus
Audio quality	<ul style="list-style-type: none"> - CD and professional audio quality - 16-bit, mono/stereo 11kHz to 48kHz in full duplex mode - 16-bit audio recording and playback at 22/32/44/48kHz
Audio compatibility	Sensaura®-based 3D positional audio with support for Microsoft® DirectSound®, DirectMusic®, EAX® 1.0, EAX® 2.0 and A3D® 1.0
Connections and cables	<ul style="list-style-type: none"> ▪ 140cm USB cable for connecting the sound module to your PC ▪ Stereo minijack connectors: <ul style="list-style-type: none"> - 3 output connectors for up to 5.1-channel speaker system connection, - 1 output connector for headphone connection, - 2 input connectors for Line In and microphone connection.

1.2. System requirements

- Intel Pentium III or AMD Athlon 500MHz and higher or compatible
- USB 1.1 port (USB 2.0 supported)
- 32MB RAM
- 10MB hard disk space
- CD-ROM or DVD-ROM drive
- Microsoft Windows 98 SE or later
- Amplified speakers or stereo headphones

1.3. Package contents

- Gamesurround Muse Pocket sound module
- Installation CD-ROM containing:
 - Microsoft Windows 98 SE, Millennium, 2000 and XP drivers
 - Hercules MediaStation II audio recording and playback utility (electronic documentation included)
- User Manual

2. SOFTWARE INSTALLATION

Before plugging in your USB bus-powered Gamesurround Muse Pocket sound module, you must first install the related drivers and software.

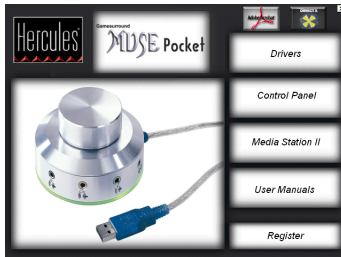
Note: your installation screens and procedure may vary slightly from those described in this manual.



Because drivers and software are constantly being developed, the ones provided on the installation CD-ROM may not be the most recent versions. You can visit the Hercules website (www.hercules.com) to verify this and, if necessary, download the very latest versions.

2.1. Driver installation


2.1.1. Driver installation for Windows 98 SE

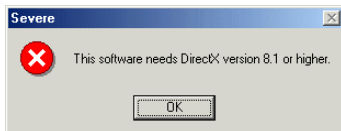


- Insert the installation CD-ROM in your CD-ROM drive.


The installation menu automatically appears, presenting all the different options available.

If the installation menu does not launch automatically:

- Double-click on **My Computer**.
- Double-click on the CD-ROM drive  icon.
- Click on **Drivers**.



A warning message appears if the latest version of DirectX is not installed on your computer:

- Click on **OK**.
- Click on  in the installation menu to install DirectX.
- Follow the on-screen instructions.

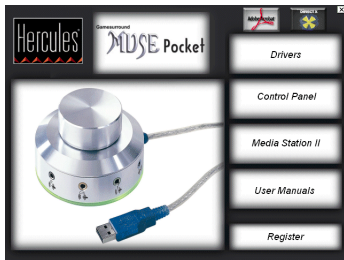
Windows prompts you to restart your computer.

- Click on **Finish**.
- When Windows restarts, click on **Drivers** in the installation menu.

- Follow the on-screen instructions.

Windows prompts you to restart your computer.

- Click on **Finish**.
- When Windows restarts, plug the Gamesurround Muse Pocket connector into a USB port on your computer.
- Follow the on-screen instructions to install both the composite and HID default drivers.



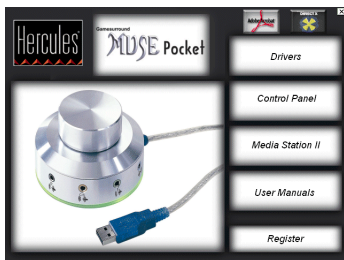
- Click on **Control Panel**.
- Follow the on-screen instructions.
- Click on **Finish** to complete the setup.

A dialog box prompts you to restart your computer.

- Click on **OK**.

When Windows restarts, the  icon appears in the Windows taskbar.


2.1.2.Driver installation for Windows Millennium

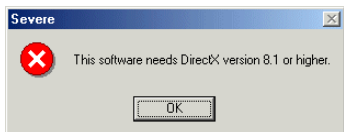


- Plug the Gamesurround Muse Pocket connector into a USB port on your computer.
- Insert the installation CD-ROM in your CD-ROM drive.

The installation menu automatically appears, presenting all the different options available.

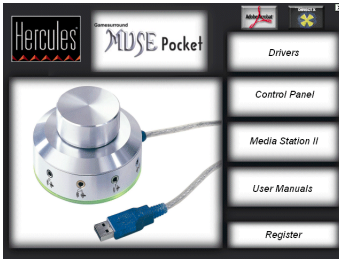
If the installation menu does not launch automatically:


- Double-click on **My Computer**.
- Double-click on the CD-ROM drive  icon.
- Click on **Drivers**.



A warning message appears if the latest version of DirectX is not installed on your computer:

- Click on **OK**.



- Click on  in the installation menu to install DirectX.
- Follow the on-screen instructions.


Windows prompts you to restart your computer.

- Click on **Finish**.
- When Windows restarts, click on **Drivers** in the installation menu.

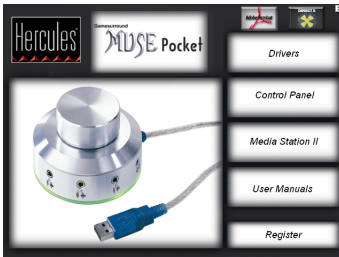
- Follow the on-screen instructions.

Windows prompts you to restart your computer.

- Click on **Finish**.
- When Windows restarts, click on **Control Panel**.
- Follow the on-screen instructions.
- Click on **Finish** to complete the setup.

The  icon appears in the Windows taskbar.


2.1.3. Driver installation for Windows 2000

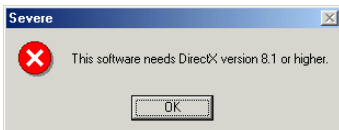


- Plug the Gamesurround Muse Pocket connector into a USB port on your computer.
- Insert the installation CD-ROM in your CD-ROM drive.


The installation menu automatically appears, presenting all the different options available.

If the installation menu does not launch automatically:

- Double-click on **My Computer**.
- Double-click on the CD-ROM drive  icon.
- Click on **Drivers**.



A warning message appears if the latest version of DirectX is not installed on your computer:

- Click on **OK**.
- Click on  in the installation menu to install DirectX.
- Follow the on-screen instructions.

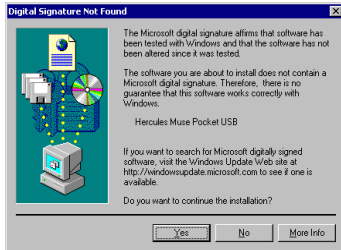
Windows prompts you to restart your computer.

- Click on **Finish**.
- When Windows restarts, click on **Drivers** in the installation menu.

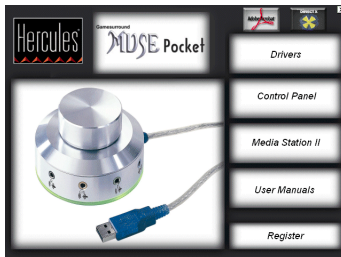
- Follow the on-screen instructions.


The Digital Signature Not Found dialog box appears.

- Click on **Yes**.
- Click on **Finish** to complete the setup.



- Click on **Control Panel**.
- Follow the on-screen instructions.
- Click on **Finish** to complete the setup.



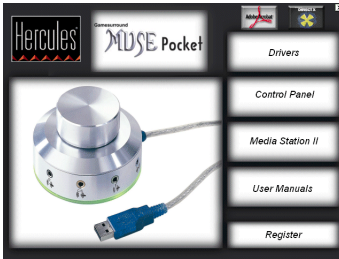
The  icon appears in the Windows taskbar.



To optimize your sound module for Windows 2000:

- Click on **Start/Settings/Control Panel**.
- Double-click on the **Sounds and Multimedia** icon.
- Select the **Audio** tab.
- Verify that **Hercules Muse Pocket USB** appears in the **Preferred device** drop-down lists for **Sound Playback** and **Sound Recording** to set Gamesurround Muse Pocket as your default audio playback and recording device.
- Click on **Advanced** in the **Sound Playback** section.
- Select the **Performance** tab.
- Set the **Hardware acceleration** slider to **Full**.
- Click on **Apply/OK** and then click on **OK**.


2.1.4. Driver installation for Windows XP



- Plug the Gamesurround Muse Pocket connector into a USB port on your computer.
- Insert the installation CD-ROM in your CD-ROM drive.

The installation menu automatically appears, presenting all the different options available.

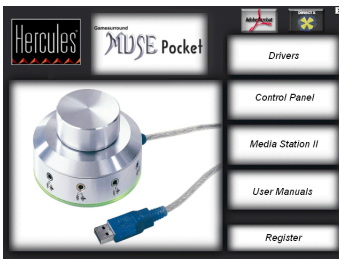
If the installation menu does not launch automatically:

- Double-click on **My Computer**.
- Double-click on the CD-ROM drive  icon.
- Click on **Drivers**.
- Follow the on-screen instructions.




The Hardware Installation dialog box appears.

- Click on **Continue Anyway**.
- Click on **Finish** to complete the setup.



- Click on **Control Panel**.
- Follow the on-screen instructions.
- Click on **Finish** to complete the setup.

The  icon appears in the Windows taskbar.

ENGLISH

FRANÇAIS

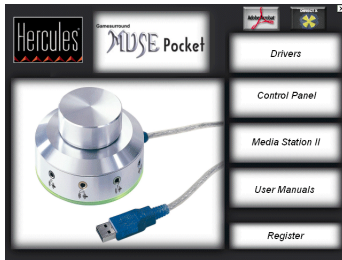
DEUTSCH

NEDERLAND

ITALIANO

ESPAÑOL


2.2. Application installation





- Insert the installation CD-ROM in your CD-ROM drive.

The installation menu automatically appears, presenting all the different options available.

If the installation menu does not launch automatically:

- Double-click on **My Computer**.
- Double-click on the CD-ROM drive  icon.

- Select the elements you wish to install and follow the on-screen instructions to install them.


	<p><i>DirectX</i></p> <p>Install DirectX to take advantage of all the latest innovations in the world of 3D sound.</p>
	<p><i>Adobe Acrobat Reader</i></p> <p>Acrobat Reader allows you to view, navigate and print documents in PDF format.</p>
<p><i>User Manuals</i></p>	<p><i>Documentation</i></p> <p>Install the pdf version of the Gamesurround Muse Pocket manual on your PC.</p> <p>Once installed, access the manual by clicking on:</p> <p>Start/Programs/Hercules/Audio/Gamesurround Muse Pocket USB/User Manual.</p>
<p><i>Media Station II</i></p>	<p><i>Hercules MediaStation II</i></p> <p>Hercules MediaStation II is a multifunctional software package for easy playback of digital music and video files, as well as image viewing*.</p> <p>Hercules MediaStation II allows you to listen to songs and mix or record* different styles of music.</p> <p>Using the software's digital video and image viewing feature, users can even create great slideshows with photos from a digital camera!</p> <p>Intuitive and sophisticated, Hercules MediaStation II is destined to become your favorite everyday software companion!</p> <p><small>*See your electronic documentation or options window for a list of supported formats.</small></p>

A rectangular button with a gradient background and the word "Register" in a serif font.

Save time by registering your product online!

Registering with us in this way will simplify the process if you ever need to contact our technical support team.

If you have aborted the installation procedure, proceed as follows to launch the installation menu again:

- Double-click on **My Computer**.
- Double-click on the CD-ROM drive  icon.

Log on now to our website (www.hercules.com) to download the latest drivers and software, consult the list of Frequently Asked Questions (FAQ) relating to your sound module and take advantage of user manual updates. You can also have a look at the complete range of Hercules products and find out about forthcoming releases.

ENGLISH

FRANÇAIS

DEUTSCH

NEDERLAND

ITALIANO

ESPAÑOL

3. SOUND MODULE OVERVIEW

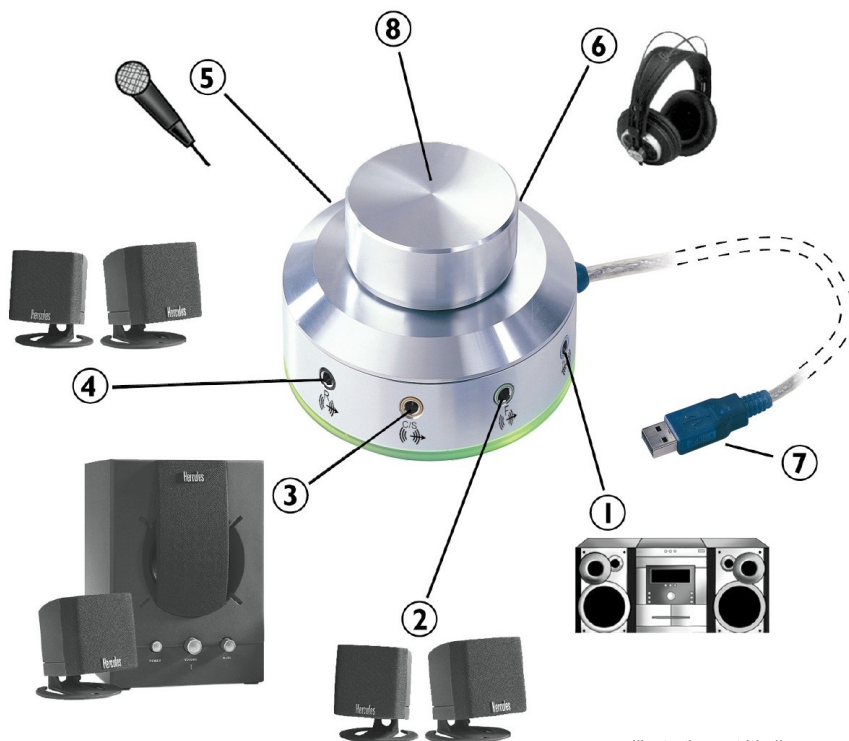


Illustration not binding

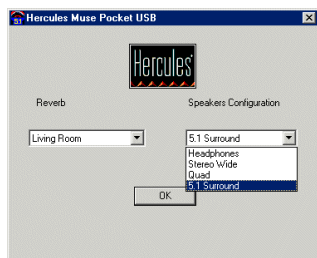
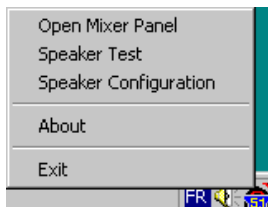
- ① Line In stereo input (hi-fi system, for example)
- ② Front (left and right) speakers stereo output
- ③ Center speaker and subwoofer stereo output
- ④ Surround (left and right) speakers stereo output
- ⑤ Microphone stereo input
- ⑥ Headphone stereo output
- ⑦ USB cable for connecting the sound module to your PC
- ⑧ Volume and mute control

4. SOUND MODULE CONFIGURATION

4.1. The Gamesurround Muse Pocket control panel

Once software installation is complete, the  icon appears in the Windows taskbar.

- Right-click on this icon to access the taskbar menu.



- Click on **Speaker Configuration**.

The speaker configuration window appears.

- First, according to the device connected to your sound module, select your audio configuration in the **Speakers Configuration** drop-down list to optimize sound reproduction when listening to digital audio files (MP3 and WMA formats), audio CDs and in games. The configurations to choose from are: **Headphones**, **Stereo Wide**, **Quad** (i.e. 4 or 4.1 speakers) or **5.1 Surround**.

Note: you can take advantage of spatial sound even with a stereo source. For example, you can enjoy virtual surround sound on your stereo headphones.

- You can spice up sound effects by selecting a sound environment from the **Reverb** list (Living Room, Auditorium, Forest, Hangar...).

- Click on **OK** to apply the sound of the selected environment.

The tone of the sound is modified (more echo, more muffled sound, etc.).

ENGLISH

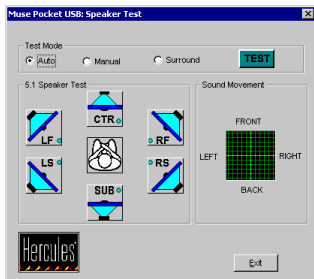
FRANÇAIS

DEUTSCH

NEDERLAND

ITALIANO

ESPAÑOL



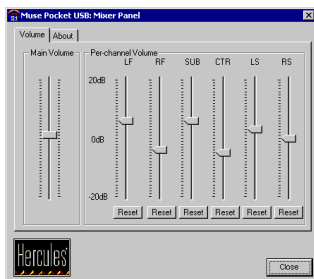
- Click on **Speaker Test**.

The Muse Pocket USB: Speaker Test window appears.

- Select **Auto** and then click on **TEST**.

A sound signal is emitted by each of the 6 elements of your 5.1 speaker system in succession. The indicator light moves according to the speaker being tested (LF for the front left speaker, RF for the front right speaker, LS for the surround left speaker, RS for the surround right speaker, CTR for the center speaker and SUB for the subwoofer). In this way, you can check that the speakers have been properly connected and are in the correct positions. If any problems arise during the test, verify that your audio device has been connected properly.

- Click on **STOP** to stop the test.
- Select **Manual** and then click on one of the speakers to test that speaker on its own.
- Select **Surround** and then click on **TEST** to test your surround sound setup and view the **Sound Movement** graph in action.
- Click on **STOP** to stop the test.
- Click on **Exit** to exit the panel.



- Click on **Open Mixer Panel**.

The Muse Pocket USB: Mixer Panel window appears.

- Adjust the overall volume of your audio device/speaker system using the **Main Volume** slider.
- Adjust the independent volume of each speaker between -20dB and 20dB, respectively:
LF: front left speaker,
RF: front right speaker,
SUB: subwoofer,
CTR: center speaker,
LS: surround left speaker,
RS: surround right speaker.
- Click on **Reset** to restore the default settings.
- Click on **Close** to exit the panel.



- Click on **About**.

*The **Muse Pocket USB: About** dialog box appears, providing information about the software.*

4.2. Audio CD playback

To enjoy 5.1-channel sound when listening to audio CDs, make sure that:

- you have enabled **5.1 Surround** in the **Speakers Configuration** drop-down list (see section 4.1),
- the digital playback function is enabled for your CD-ROM or DVD-ROM drive. To do this:

Under Windows 98:

- Click on **Start/Settings/Control Panel**.
- Double-click on the **Multimedia** icon.
- Select the **CD Music** tab.
- Enable the **Enable digital CD audio for this CD-ROM device** option.
- Click on **OK**.

Under Windows Millennium:

- Click on **Start/Settings/Control Panel**.
- Click on **View all Control Panel options** if necessary.
- Double-click on the **System** icon.
- Select the **Device Manager** tab.
- Select your CD-ROM or DVD-ROM drive in the **CDROM** section.
- Click on **Properties**.
- Select the **Properties** tab.
- Enable the **Enable digital CD audio for this CD-ROM device** option.
- Click on **OK**.

Under Windows 2000:

- Click on **Start/Settings/Control Panel**.
- Double-click on the **System** icon.
- Select the **Hardware** tab.
- Click on **Device Manager....**
- Select your CD-ROM or DVD-ROM drive in the **DVD/CD-ROM drives** section.

ENGLISH

FRANÇAIS

DEUTSCH

NEDERLAND

ITALIANO

ESPAÑOL

- Click on **Action/Properties**.
- Select the **Properties** tab.
- Enable the **Enable digital CD audio for this CD-ROM device** option.
- Click on **OK**.

Under Windows XP:

- Click on **Start/Control Panel**.
- Click on **Switch to Classic View** if necessary.
- Double-click on the **System** icon.
- Select the **Hardware** tab.
- Click on **Device Manager**.
- Select your CD-ROM or DVD-ROM drive in the **DVD/CD-ROM drives** section.
- Click on **Action/Properties**.
- Select the **Properties** tab.
- Enable the **Enable digital CD audio for this CD-ROM device** option.
- Click on **OK**.

If your CD-ROM or DVD-ROM drive does not automatically play your audio CD when you insert it under Windows 98 SE/Millennium, you can enable the **Auto insert notification** option. To do this:

- Click on **Start/Settings/Control Panel**. (Under Windows Millennium, click on **View all Control Panel options** if necessary.)
- Double-click on the **System** icon.
- Select the **Device Manager** tab.
- Select your CD-ROM or DVD-ROM drive in the **CD-ROM** section.
- Click on **Properties**.
- Select the **Settings** tab.
- Enable the **Auto insert notification** option.
- Click on **OK** and restart your computer.

Note 1: Auto insert notification is the default configuration for Windows 2000/XP.

Note 2: you can also play your audio CDs using the Hercules MediaStation II software (provided on the installation CD-ROM).

4.3. Volume settings

4.3.1. Using the volume button

- Adjust the volume by rotating the round button ⑥ on the sound module.

The mixer displays the volume adjustment.

- Press the button to switch off the sound.

The Windows taskbar Volume icon is muted.

- Press the button again to restore the normal volume.

4.3.2. Using headphones

Simply connect a pair of headphones (not included) to the headphone plug ⑥ on the sound module.

4.3.3. Optimizing volume in games

In order to optimize the power of your Gamesurround Muse Pocket in games, select the advanced options in your game and increase the values of all effects (Voice, Fx, Music, etc.) to their maximum volume.

ENGLISH

FRANÇAIS

DEUTSCH

NEDERLAND

ITALIANO

ESPAÑOL

5. TECHNICAL SUPPORT

Log onto our website (www.hercules.com) and check out the **Support/Drivers** section. From there you will be able to access various elements (Frequently Asked Questions (FAQ), the latest versions of drivers and software) that may help to resolve your problem.

If the problem persists you may also contact us by email via the website, taking care to provide the name of the product for which you require assistance, as well as a description of the problem and details regarding your configuration (motherboard, processor, operating system). A telephone assistance service is also available (UK only) by dialing 020 7216 0047.

5.1. Warranty information

Worldwide, Guillemot Corporation S.A. ("Guillemot") warrants to the purchaser that this Hercules product will be free from material defects and manufacturing flaws for a period of two (2) years from the original date of purchase. Should the product appear to be defective during the warranty period, immediately contact Hercules product support, who will indicate the procedure to follow. In the event that, following diagnosis, Hercules product support asks you to return the product, a return authorization number will be provided. This number must be displayed on your return package, which must be sent with delivery prepaid. Any package without a return authorization number will not be accepted and may result in extra fees for the sender.

Within the context of this warranty, Guillemot commits solely that it will, at its option, repair or replace a product recognized as defective by Hercules product support. Where authorized by applicable law, the full liability of Guillemot and its subsidiaries (including for indirect damages) is limited to the repair or replacement of the product. The consumer's legal rights with respect to legislation applicable to the sale of consumer goods are not affected by this warranty.

This warranty shall not apply: (1) if the product has been modified, opened, altered, or has suffered damage as a result of inappropriate or abusive use, negligence, an accident, normal wear, or any other cause not related to a material defect or manufacturing flaw; (2) if the product has not been returned complete (e.g.: manual, CD, cable, etc.) with its original packaging, a legible copy of the original receipt and suitably protected in the package; (3) to software not published by Guillemot, said software being subject to a specific warranty provided by its publisher.

5.2. Save time by registering your product online!

Insert the installation CD-ROM in your CD-ROM drive and click on **Register**. Registering with us in this way will simplify the process if you ever need to contact our technical support team.

Trademarks

Gamesurround Muse™, Guillemot™ and Hercules® are trademarks and/or registered trademarks of Guillemot Corporation S.A. Microsoft® Windows® 98 SE, Millennium, 2000, XP, DirectX®, DirectMusic®, DirectSound® and the Windows logo are either registered trademarks or trademarks of Microsoft Corporation in the United States and/or other countries. Intel® and Pentium® are registered trademarks of Intel Corporation. AMD Athlon® is a registered trademark of Advanced Micro Devices, Inc. Sensaura® is a registered trademark of Central Research Laboratories Ltd. A3D® is a registered trademark of Aureal Semiconductor, Inc. EAX® is a registered trademark of Creative Technology Ltd. Adobe® and Acrobat® are registered trademarks of Adobe Systems, Inc. All other trademarks and brand names are hereby acknowledged and are property of their respective owners. Illustrations not binding. Contents, designs and specifications are subject to change without notice and may vary from one country to another.

Declaration of conformity

EC COMPLIANCE NOTICE: this equipment has been tested and found to comply with the limits of the Council Directive 89/336/EEC of 3 May 1989 on the approximation of the laws of the Member States relating to electromagnetic compatibility, amended by Directive 93/68/EEC. The audio translator has been tested and found to comply with EN 50081-1 /1992: EN50222, EN 50082-1 /1997: EN61000-4-2/-3/-8, EN 50204. In a domestic environment this product may cause radio interference in which case the user may be required to take adequate measures.

CANADIAN COMPLIANCE NOTICE: this Class B digital apparatus meets all requirements of the Canadian Interference-Causing Equipment Regulations.

USA COMPLIANCE NOTICE: this equipment has been tested and found to comply with the limits for a Class B digital device, pursuant to Part 15 of the FCC rules. Operation is subject to the following two conditions:

- (1) This device may not cause harmful interference, and
- (2) This device must accept any interference received, including interference that may cause undesired operation.

These limits are designed to provide reasonable protection against harmful interference in a residential installation. This equipment generates, uses and can radiate radio frequency energy and, if not installed and used in accordance with the instructions, may cause harmful interference to radio communications. However, there is no guarantee that interference will not occur in a particular installation. If this equipment does cause harmful interference to radio or television reception, which can be determined by turning the equipment on and off, the user is encouraged to try to correct the interference by one or more of the following measures:

- Reorient or relocate the receiving antenna.
- Increase the separation between the equipment and receiver.
- Connect the equipment into an outlet on a circuit different from that to which the receiver is connected.
- Consult the dealer or an experienced radio/TV technician for help.

Copyright

© 2003 Guillemot Corporation S.A. All rights reserved.

This publication may not be reproduced in whole or in part, summarized, transmitted, transcribed, stored in a retrieval system, or translated into any language or computer language, in any form or by any means, electronic, mechanical, magnetic, photocopying, recording, manual or otherwise, without the prior written permission of Guillemot Corporation S.A.

Disclaimer

Guillemot Corporation S.A. reserves the right to make changes to specifications at any time and without notice. The information provided by this document is believed to be accurate and reliable. However, no responsibility is assumed by Guillemot Corporation S.A. either for its use or for the infringement of patents or other rights of third parties resulting from its use. This product may exist in a light or special version for PC integration or other purposes. Certain functions detailed in this manual may not be available in these versions. Wherever possible, a **README.TXT** will be included on the installation CD-ROM detailing the differences between the supplied product and the product described in the present documentation.

End-user software license Agreement

IMPORTANT: please read the Agreement carefully prior to opening and installing the Software. By opening the Software package, you agree to be bound by the terms of this Agreement. The Software enclosed in this package is licensed, not sold, and is only available under the terms of the present license Agreement. If you do not agree with the terms hereafter, you must promptly return the Software within 15 days, together with the entire contents of the box, to the place of purchase.

The Guillemot Corporation S.A. Software (hereafter named the "Software") is copyrighted by Guillemot Corporation S.A. All rights are reserved. The term "Software" refers to all documentation and related material, including drivers, executable programs, libraries and data files. The purchaser is granted a license to use the Software only. The licensee also agrees to be bound by the terms and conditions of the present Agreement concerning copyright and all other proprietary rights for any third party Software, documentation and related material included in the Software package.

Guillemot Corporation S.A. reserves the right to terminate this license in the event of failure to comply with any of the terms or conditions laid out in the present Agreement. On termination, all copies of the Software shall immediately be returned to Guillemot Corporation S.A.; the purchaser remaining liable for any and all resulting damages.

License:

1. The license is granted to the original purchaser only. Guillemot Corporation S.A. retains all title to and ownership of the Software and reserves all rights not expressly granted. The licensee is not permitted to sub-license or lease any of the rights that are hereby granted. Transfer of the license is permitted, provided that the transferor does not retain any part or copy of the Software and the transferee accepts to be bound by the terms and conditions of the present Agreement.
2. The licensee may only use the Software on a single computer at any time. The machine-readable portion of the Software may be transferred to another computer provided it is previously erased from the first machine and there is no possibility that the Software can be used on more than one machine at any one time.
3. The licensee acknowledges the copyright protection belonging to Guillemot Corporation S.A. The copyright notice must not be removed from the Software, nor from any copy thereof, nor from any documentation, written or electronic, accompanying the Software.
4. The licensee is granted the right to make one back-up copy of the machine-readable portion of the Software on the condition that all copyright and proprietary notices are also reproduced.
5. Except where the present Agreement expressly permits, the licensee is strictly prohibited from engaging in, nor may he permit third parties to engage in, the following: providing or disclosing the Software to third parties; providing use of the Software in a network, multiple PCs, multi-user or time-sharing arrangement where the users are not individual licensees; making alterations or copies of any kind of the Software; making any attempt to disassemble, de-compile or reverse engineer the Software in any way or form, or engaging in any activity aimed at obtaining underlying information not visible to the user during normal use of the Software; making copies or translations of the User Manual.

