

User manual

Juice machine



SL 2000

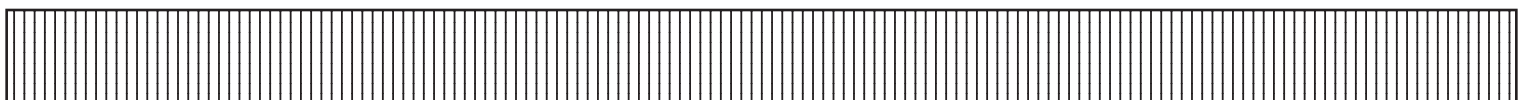
Your retail dealer

.....

.....

U/EN

Rev. 090914



List of contents

List of contents	page.	2
Dispenser description	page.	3-7
Installation and users instruction	page.	8-10
Maintenance	page.	11-12
Trouble shooting	page.	11-12
Handling & cleaning instructions	page.	13.
Trouble shooting	page.	14-15
Electrical connections	page.	16
Technical data	page.	17.
Notes	page.	17.
Portion control	page.	18.

Dispenser

Dispenser description for Slim Line 2000

Slim Line 2000 is a dispenser for cooling water and mixing juiceconcentrate to a ready drink product.

SL2000 has a chilled cabinet for the concentrate.

The dispenser is for two non-carbonated drinks and chilled water.

The dispenser is connected to the water mains by a pressurised tube and to an electric wall socket by a power plug.

The water-pressure is adjusted with the water-regulator and the pressure is displayed on the manometer.

The water is chilled by the cooling-block, which in its turn is chilled by the air cooled compressor.

The water-temperature is adjustable by one of the thermostats the cabinet by the other.

The mixing ratio product/water is adjusted with the ejectors.

Pushing one of the three buttons on the front panel dispenses the mixed product or water.

Generally!

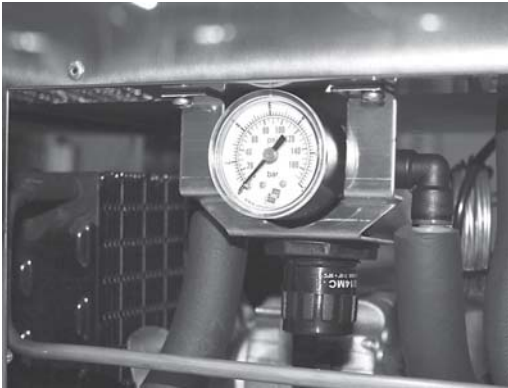
Read the instructions carefully before you start working with this equipment.

The equipment should be installed and serviced by trained staff

Dispenser description

Picture

description



Water-regulator with manometer

The water-regulator can be adjusted up to 6 bar.

The minimum pressure is 2,2 bar.

Note! When adjusting the pressure, dispense product.



Venturi ejector

The mixing ratio is adjusted on the ejectors.



When water flows through the ejector, the concentrate mixes with the water.

The mixing ratio is regulated on the ejector.



Turn the adjustment screws according to the label on the ejector in order to increase or decrease the amount of concentrate.

Dispenser description

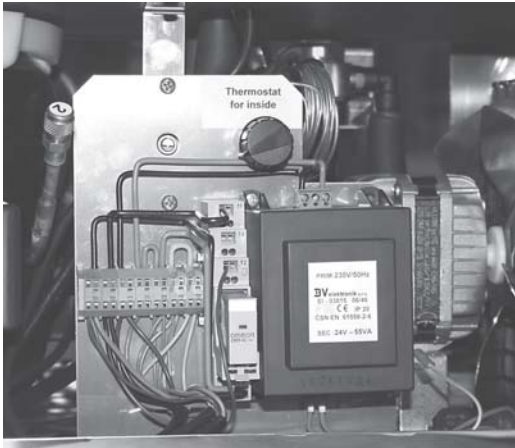
Picture	description
	<p>Water valve</p> <p>The Water valve is located behind this plate and connected to the ejector and opens the water-flow</p>
	<p>Push-button</p> <p>The push buttons on the front panel control the water valves and pinch-solenoid. Use only one button at time.</p>
	<p>Cooling-block</p> <p>The cooling-block is a flow through block with three built-in stainless steel coils.</p> <p>The coils are for water, refrigerant R134A and thermostat.</p>



Dispenser description

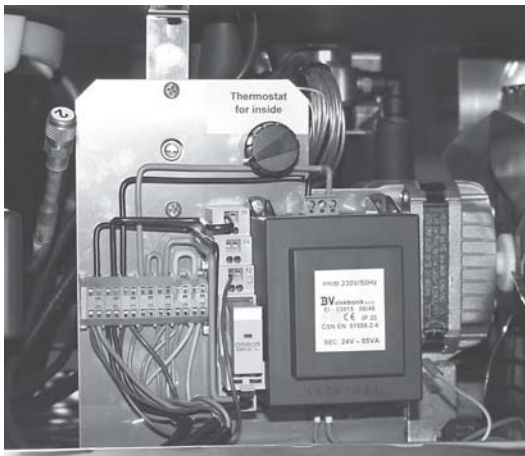
Picture

description



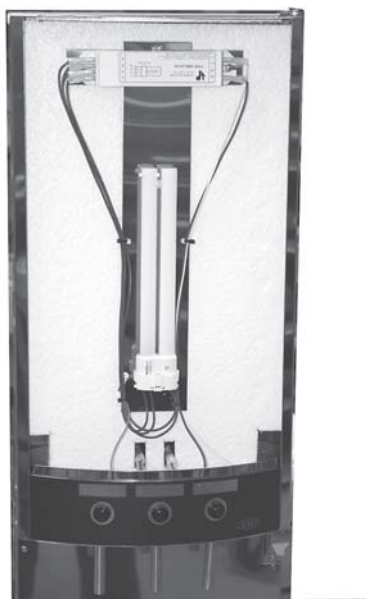
Transformer

The transformer is a 230 / 24 V (55 VA).
The transformer supplies 24 V to the magnetic-valves.



Thermostat

The two thermostats keep the temperature within correct range for the cold water and the cabinet.
Factory adjusted do not adjust, this may cause damage and water leakage in the dispenser.






Illumination

Behind the front panel there is a low-energy 18 W fluorescent lamp.


The fluorescent lamp is a PL-lamp.

Dispenser description

Picture	description
	<p>Front panel</p> <p>The front panel is divided in three parts. Two plastic sheets (made of acrylic and opaque) and in between these a branded film. All parts are removable.</p>
	<p>Drip-tray</p> <p>The drip-tray is made of stainless steel with steel bars and position curves for the glass. It is possible to connect drainage to the drip-tray.</p>
	<p>Large particle filter</p> <p>The large particle filter is located on the tube between the cooling block and the water valves. It is possible to open up the filter with a wrench so that it can be rinsed.</p> <p>Note: Turn of the water and electricity before any work is done to the machine.</p>

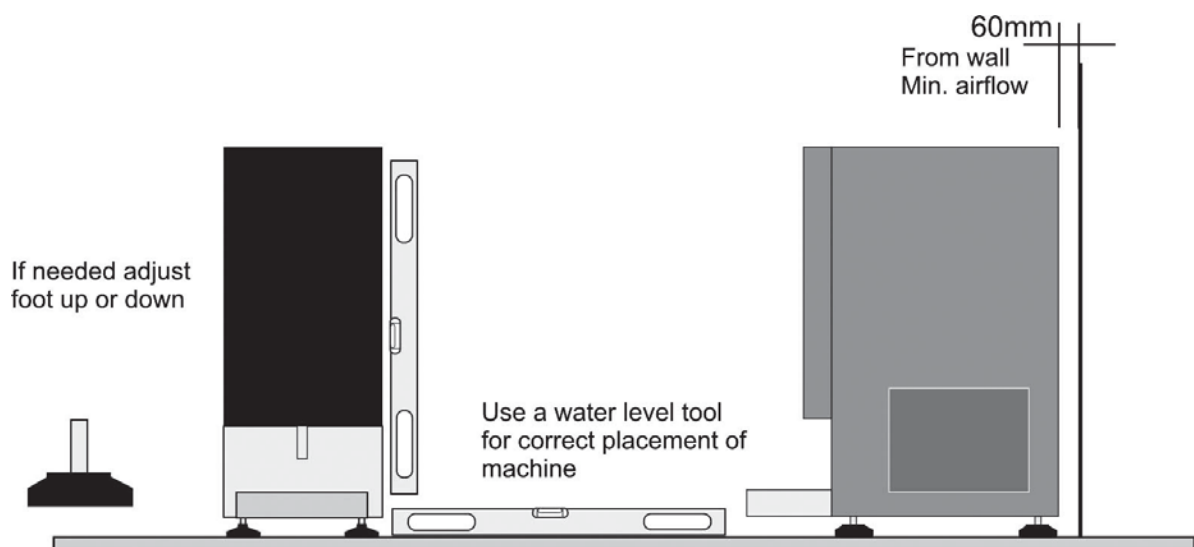


Installation and users instruction

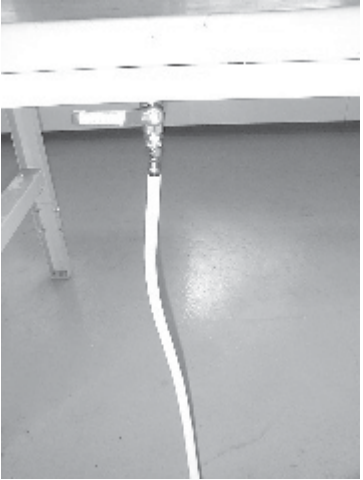


Picture	description
	<p>Unpack dispenser from the packaging and ensure that nothing is damaged.</p> <p>Place the dispenser to it's position. Note: The dispenser weights about 51 kg.</p> <p><u>Don't lift by door/front panel.</u></p> <p>Allow a space of min. 40mm around the frame for air circulation.</p>

Make sure that the dispenser level.

Adjustment can be made with the adjustable feet .






Installation and users instruction

Picture	description
	<p>Connect the water-hose from the dispenser to the cold water mains (do not forget seals).</p> <p>Turn on the water and check for leaks.</p> <p>Note! It is strongly recommended to use some form of water isolator in the water line in case of an emergency leakage.</p>
	<p>Connect the power-plug to the wall socket.</p> <p>The compressor will now start, and the front panel will light up.</p>
	<p>The water pressure is factory adjusted to 2.2 bar, which is the correct working pressure.</p> <p>Check by pressing and holding one product button and read the manometer. If there is a variation, adjust by pulling down knob and turn it until you get a reading of 2.2 bar.</p>



Installation and users instruction

Picture	description
 A close-up photograph showing a person's hand connecting a white plastic tube to the internal components of a dispenser. The tube is being inserted into a pinch solenoid valve and an elbow connector on the ejector.	<p>Place the bag-in-box in the dispenser and connect it to the pinch solenoid-valve and ejector. Pushing the centre of the pinch solenoid valve and sliding the tube in from the side, fixes the tube.</p> <p>Cut the tube to correct length and push it onto the elbow connector on the ejector.</p>
 A photograph of the dispenser's dispensing area. A clear glass is placed on the perforated drip tray under the outlet pipe. The dispenser is dispensing a liquid into the glass.	<p>Place a cup under the outlet pipe.</p> <p>Dispense a glass of product by pressing the push-button.</p> <p>Check that the brix-value (mixing ratio) is okay, if not adjust.</p>
 A close-up photograph of the ejector mechanism. A small screwdriver is being used to adjust a screw on the side of the ejector, which is used to control the brix value.	<p>To adjust the brix, use the adjustment screw on the ejector.</p> <p>The dispenser is now ready to use.</p>

Maintenance



Change of bag-in-box

1. Turn the box so the perforated side is turned upwards.
2. Brake the perforation on the box and place the main pipe in the punched hole
3. Place the box in the dispenser so that the tube points down to wards the pinch-solenoid. Press the end of the pinch-solenoid and insert the tube from the side
4. Check the tube length so that it will reach 1cm into the venture nipple.
5. If the tube is too long, cut it to the right length.
6. Slip the tube to the venture nipple.
7. Make sure that the tube is not twisted, and shut the door to the dispenser.
8. Place a cup under the outlet-pipes and draw until the juice comes out.



Daily cleaning

1. Clean internal and external surface with a damp rag.
2. Use the cleaning-brush to clean the outlet-pipes
3. Wet the brush in water and put it in the outlet pipe from the inside of the door.
4. Clean the drip-tray.
5. **The drip-tray is made-of stainless steel and can be washed in a dishwasher.**

Maintenance



Periodic cleaning

1. **Disconnect the bag-in-box tube from the venture.**
2. **Fill the cleaning bottle with warm water and some washing-up liquid and connect it to the venture.**
3. **Shut the dispenser door and put a cup under the outlet-pipes rinse the venture and the outlet-pipes by pressing the respective push buttons.**
4. **Use the cleaning-brush to clean the outlet pipes**
5. **Wet the brush in water and put it in the outlet pipe from the inside of the door.**

Return the boxes and connect the tubes to the ventures.

Handling and cleaning instructions

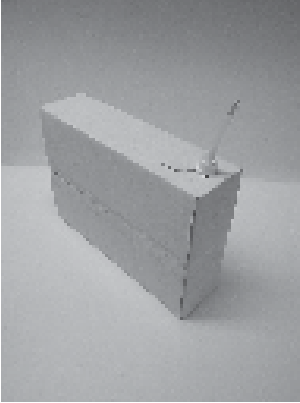


Fig. 1.



Fig. 2.



Fig. 3.

1. Open the Bag-in-Box at the perforation. Pull out the silicon tube and the plastic connector, so it is clear of the box.
2. Place the box inside the dispenser. Press in the pinch solenoid and slide the tube in to the opening. (Fig 2)
3. Push the tube onto the ejector nozzle. (Fig3)
4. The dispenser is now ready to use.

1. When changing the Bag-in-Box, the dispenser should be cleaned with hot water.
2. Fill the rinsing bottle with a solution of hot water and a sanitising agent. Add two drops of washing-up liquid. Connect the tube to the nozzle and wash it through. (Fig 4)
3. Wet the brush in a hot water and sterilising solution. Clean the outlet pipes by pushing the brush all the way through the pipe and back again. (Fig 5)
4. Rinse the pipes with the water solution from the bottle.
5. The pinch solenoid that the tube runs through should be cleaned on a regular basis, by pouring a hot water and sterilising solution over it. This will dissolve any residual concentrate.
6. The air inlet (condenser) at the back of the machine should be cleaned from dust on a regular basis by brushing or vacuuming the grid.



Fig. 4.



Fig. 5.

Trouble shooting

Problem	Probable cause	Attend to
Concentrate is Dripping from outlet pipe.	The tube is not properly fixed into the pinch solenoid valve	Fix the tube properly into the pinch solenoid valve
Mostly water or only water coming from outlet pipe	The tube is kinked due to incorrect length	Cut the tube to correct length
	The pinch solenoid needs cleaning.	Clean pinch solenoid with hot water.
	The tube is twisted.	Untwist the tube.
	The bag is empty.	Replace bag.
Nothing happens when I push the buttons, and there is no "clicking" sound.	No power to the valves	Check the valve on/off sw. inside the door.
	Thermo fuse in the transformer has cut. (On older models, a fuse has blown).	Remove power to the dispenser and put it back on after 10 sec. (Change fuse).
Nothing happens when you push the buttons, and there is a "clicking" sound.	Water supply turned off	Check water supply
	Water regulator turned off or failed. (Manometer =0 bar).	Check water regulator (change needle valve in water regulator).
	The cooling coil has frozen. (Manometer = max pressure)	Shut off water supply and call service.



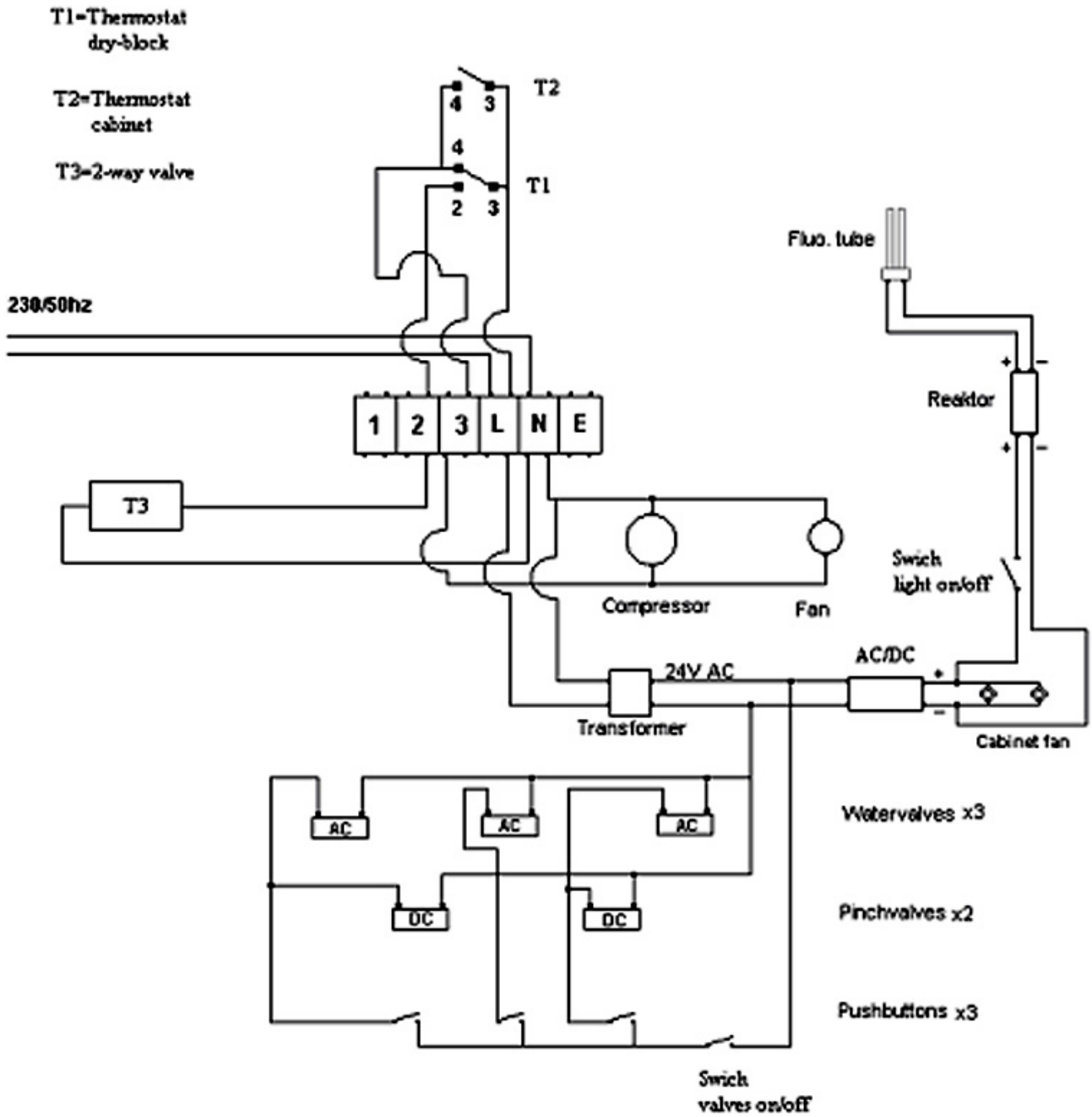
Trouble shooting

Problem	Probable cause	Attend to
<p>The taste is to strong/ weak.</p>	<p>The dispenser is not cleaned properly.</p>	<p>Clean ejector, outlet pipes and pinch solenoid.</p>
	<p>The ejector is not adjusted correctly.</p>	<p>Call service.</p>
<p>It constantly drips fluid from the outlet- pipes.</p>	<p>Dirt in the water valve.</p>	<p>Call service.</p>
<p>Troubles with cooling system.</p>		<p>Call service.</p>
<p>The drinks are not cold.</p>	<p>Failure in thermostat.</p>	<p>Call service.</p>
	<p>Failure in cooling system.</p>	<p>Call service.</p>



Electrical connections

SL 2000 with two products + water and push-buttons



Technical data

Electrical connection	230 V/50 Hz/ 2,5 A
Water connection	3,0 m Tube with 3/8" internal thread (minimum 2,5kg water pressure.)
Compressor	Elektrolux GL 80
Cooling gas	HFC-134a Amount to fill 200 gram
Cooling capacity	356 W
Cooling system	Aluminium cold block with stainless-steel pipes inside.
Front light	18 W Fluorescent-tube
Front sign size	300*471mm.
Dispenser measurement	Height: 800mm With: 295mm Depth: 550mm
Weight	51 Kg

Notes

Note 1.

The thermostat is factory adjusted and improper adjustment may cause the cooling system to freeze causing damage or water leakage in the dispenser.

Note 2.

Frequent opening and closing of the doormay cause ice build-up on the cooling plate inside the cabinet which decreases the efficiency. If this happens, defrost the machine until all ice has melted.

Note 3.

It is strongly recommended to use some sort of water isolator in the water line in case of an emergency leakage.

Note 4.


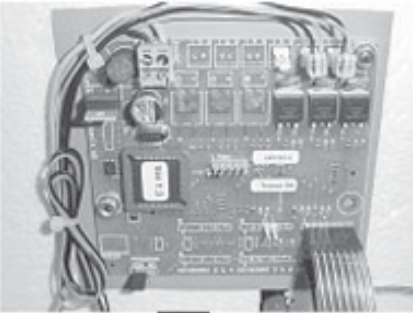

Maximum ambient temperature in the room where the dispenser is located should not exceed more then 25 C.

Note 5.

If the dispenser has frozen, check water tubs and connections inside the dispenser before running the dispenser again.



Portion control

Picture	description
	<p>Portion Programming</p> <ol style="list-style-type: none"> 1. Remove front panel. 2. Set the jumper switch on the circuit board in prog. YES position. 3. Enter program mode by pushing and holding both the S and XL buttons at the same time until the LED lights up. <p>Please observe that this procedure will only put one side of the panel into program mode. To program the other side follow the same procedure.</p>
 <p data-bbox="161 1503 387 1559">Jumper switch</p>	<ol style="list-style-type: none"> 1. Program each button by pushing and holding until required quantity is obtained. Top off function is possible. Top up = Fill the cup until the foam reaches the edge, let the foam sink down, then fill the rest of the cup. <p>Exit program mode by pushing stop/fill LED will turn off.</p>
 <p data-bbox="161 1928 284 1989">LED</p>	<ol style="list-style-type: none"> 1. Check the quantity of the portions by pushing respective buttons. If any alteration has to be done, start again from step 4. 2. When programming is finalised move the jumper switch to prog NO. <p>Reinstall the front panel.</p>



COFFEE QUEEN

SL 2000

Juice machine



FOR SERVICE

Please contact your retail dealer

Din återförsäljare / Your retail dealer

.....

.....

.....

COFFEE QUEEN AB, Box 960, 671 29 ARVIKA, besöksadress; Korpralsv 1B,
Tel vxl; +46 (0)570-47700, Fax; +46 (0)570-47719
E-mail: info@coffeequeen.se www.coffeequeen.se

Art. nr/Art. no. 1704141