

# SAFETY PRECAUTIONS



**CAUTION**

**RISK OF ELECTRIC SHOCK  
DO NOT OPEN**



**CAUTION:** TO REDUCE THE RISK OF ELECTRIC SHOCK, DO NOT REMOVE COVER (OR BACK). NO USER-SERVICEABLE PARTS INSIDE. REFER SERVICING TO QUALIFIED SERVICE PERSONNEL.



## **DANGEROUS VOLTAGE:**

The lightning flash with arrowhead symbol within an equilateral triangle is intended to alert the user to the presence of uninsulated dangerous voltage within the product's enclosure that may be of sufficient magnitude to constitute a risk of electric shock to persons.



## **ATTENTION:**

The exclamation point within an equilateral triangle is intended to alert the user to the presence of important operating and maintenance (servicing) instructions in the literature accompanying the appliance.

## **FCC WARNING:**

This equipment may generate or use radio frequency energy. Changes or modifications to this equipment may cause harmful interference unless the modifications are expressly approved in the instruction manual. The user could lose the authority to operate this equipment if an unauthorized change or modification is made.

## **ATTENTION:**

POUR ÉVITER LES CHOC ÉLECTRIQUES, INTRODUIRE LA LAME LA PLUS LARGE DE LA FICHE DANS LA BORNE CORRESPONDANTE DE LA PRISES ET POUSSER JUSQU'AU FOND.

# SAFETY PRECAUTIONS

## INFORMATION:

This equipment complies with Class B digital device regulations. This equipment generates, uses and can radiate radio frequency energy and, if not installed and used in accordance with the instructions, may cause harmful interference to radio communications. However, there is no guarantee that interference will not occur in a particular installation. If this equipment does cause harmful interference to radio or television reception, which can be determined by turning the equipment off and on, the user is encouraged to try to correct the interference by one or more of the following measures:

- Reorient or relocate the receiving antenna.
- Increase the separation between the equipment and receiver.
- Connect the equipment into an outlet on a circuit different from that to which the receiver is connected.
- Consult the dealer or an experienced radio/TV technician for help.

**WARNING: TO PREVENT FIRE OR SHOCK HAZARD, DO NOT EXPOSE THIS UNIT TO RAIN OR MOISTURE.**

## SURGE PROTECTORS:

It is recommended to use a surge protector for AC connection. Lightning and power surges ARE NOT covered under warranty for this product.

This Class B digital apparatus complies with Canadian ICES-003.

Cet appareil numérique de la classe B est conforme à la norme NMB-003 du Canada.

## Dear Customer:

Selecting fine audio and video equipment such as the unit you've just purchased is only the start of your musical enjoyment. Now it's time to consider how you can maximize the fun and excitement your equipment offers. This manufacturer and the Electronic Industries Association's Consumer Electronics Group want you to get the most out of your equipment by playing it at a safe level. One that lets the sound come through loud and clear without annoying blaring or distortion-and, most importantly, without affecting your sensitive hearing. Sound can be deceiving. Over time your hearing "comfort level" adapts to higher volumes of sound. So what sounds "normal" can actually be loud and harmful to your hearing. Guard against this by setting your equipment at a safe level BEFORE your hearing adapts.

### To establish a safe level:

- Start your volume control at a low setting.
- Slowly increase the sound until you can hear it comfortably and clearly, and without distortion.

### Once you have established a comfortable sound level:

- Set the dial and leave it there.

Taking a minute to do this now will help to prevent hearing damage or loss in the future. After all, we want you listening for a lifetime.

### We Want You Listening For A Lifetime

Used wisely, your new sound equipment will provide a lifetime of fun and enjoyment. Since hearing damage from loud noise is often undetectable until it is too late, this manufacturer and the Electronic Industries Association's Consumer Electronics Group recommend you avoid prolonged exposure to excessive noise. This list of sound levels is included for your protection.

#### Decibel

<u>Level</u>	<u>Example</u>
30	Quiet library, soft whispers
40	Living room, refrigerator, bedroom away from traffic
50	Light traffic, normal conversation, quiet office
60	Air conditioner at 20 feet, sewing machine
70	Vacuum cleaner, hair dryer, noisy restaurant
80	Average city traffic, garbage disposals, alarm clock at two feet

#### THE FOLLOWING NOISES CAN BE DANGEROUS UNDER CONSTANT EXPOSURE:

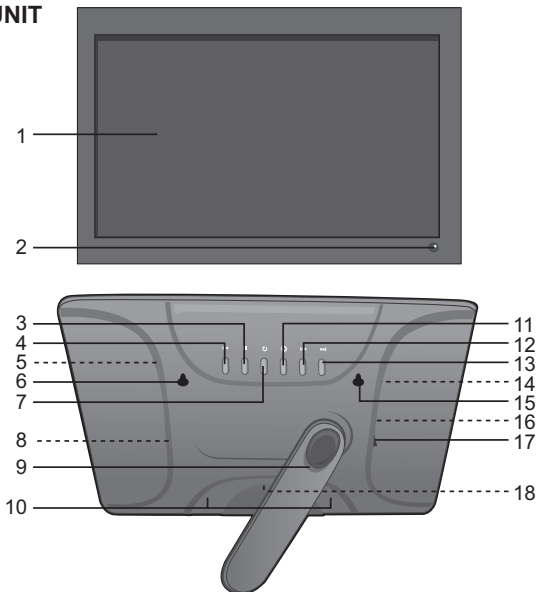
90	Subway, motorcycle, truck traffic, lawn mower
100	Garbage truck, chain saw, pneumatic drill
120	Rock band concert in front of speakers, thunderclap
140	Gunshot blast, jet engine
180	Rocket launching pad

Information courtesy of the Deafness Research Foundation.



# LOCATION OF CONTROLS

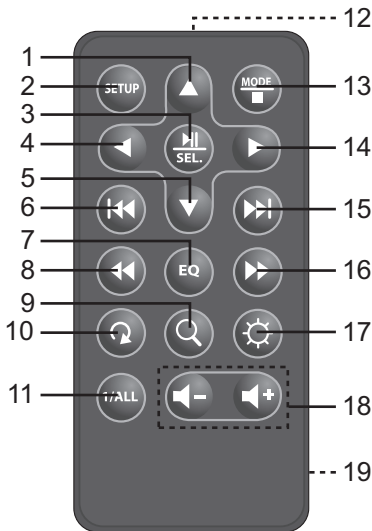
## MAIN UNIT



1. Screen
  2. Remote Sensor
  3. MODE/Stop (■) Button
  4. SELECT/Play/Pause (▶||) Button
  5. SD/MMC/MS/xD Card Slot (Side of Unit)
  6. Wall Mount Hole
  7. Volume/Navigation UP/Rotate Button
  8. CF Card Slot (Side of Unit)
  9. Stand (PART NO. 60-278-C0401\*)
  10. Speakers
  11. Volume/Navigation DOWN/Brightness Button
  12. Navigation Right/Skip (▶▶) Button
  13. Navigation Left/Skip (◀◀) Button
  14. Mini USB Jack (Side of Unit) (USB CABLE PART NO. 54-400-00740\*)
  15. Wall Mount Hole
  16. USB Jack (for Flash Drives only) (Side of Unit)
  17. Power Switch (Side of Unit)
  18. Headphones and DC 12V IN Jack (Bottom of Unit) (AC ADAPTER PART NO. 43-111-00281\*)
- \* Consumer Replaceable Part  
(See page 23 to order.)

## LOCATION OF CONTROLS (CONTINUED)

### REMOTE



1. Navigation ▲ Button
2. SETUP Button
3. SELECT/Play/Pause (▶||) Button
4. Navigation ◀ Button
5. Navigation ▼ Button
6. Skip ◀◀ Button
7. EQ Button
8. Search ◀◀ Button
9. Zoom Button
10. Rotate Button
11. Repeat 1/ALL Button
12. Remote Transmitter (Top of Unit)
13. MODE/Stop (■) Button
14. Navigation ▶ Button
15. Skip ▶▶ Button
16. Search ▶▶ Button
17. Brightness Button
18. Volume UP/DOWN Buttons
19. Battery Compartment (Rear of Unit)

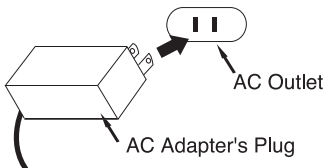
**REMOTE PART NO.**  
**92-274-02020\***

**\* Consumer Replaceable Part  
(See page 23 to order.)**

# POWER SOURCE

## AC CONNECTION

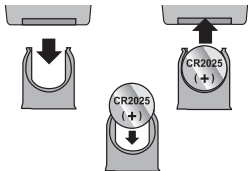
Insert the small end of the AC adapter into the DC 12V IN jack (located on the bottom of the unit). Connect the other end to a wall outlet having 120V AC, 60 Hz. AC Adapter, DC 12V  $\ominus \rightleftarrows \oplus$



## NOTES:

- Remove both the DC plug and the AC-IN plug to disconnect the AC adapter when not in use.
- Only use the supplied AC adapter which has the following specs: DC 12V  $\ominus \rightleftarrows \oplus$

## REMOTE BATTERY INSTALLATION



1. Remove the Battery Compartment by pressing in on the tab and then sliding the compartment out.
2. Install a CR2025 battery, paying attention to the polarity diagram in the Battery Compartment (positive side up).
3. Replace the Battery Compartment.

## BATTERY PRECAUTIONS

Follow these precautions when using batteries in this device:

1. Warning—Danger of explosion if batteries are incorrectly replaced. Replace only with the same or equivalent type.
2. Use only the size and type of batteries specified.
3. Be sure to follow the correct polarity when installing the batteries as indicated next to the battery compartments. A reversed battery may cause damage to the device.
4. If the device is not to be used for a long period of time, remove the batteries to prevent damage or injury from possible battery leakage.
5. Do not try to recharge a battery not intended to be recharged; it can overheat and rupture. (Follow battery manufacturer's directions.)

## OPTIONAL FEATURES

### **HEADPHONES JACK (BOTTOM OF UNIT)**

For private listening, plug headphones into this jack. The speakers will be disconnected when a plug is inserted into this jack.

### **WALL MOUNT HOLES (2) (REAR OF UNIT)**

If desired, the digital frame can be mounted onto a wall. Simply hang using the Wall Mount holes, as you would hang an ordinary photo frame or painting.

### **STAND (REAR OF UNIT)**

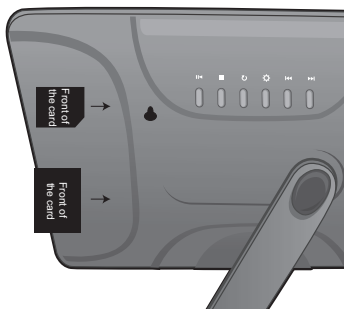
To use the stand, align the stand with the grooves on the rear of the unit and then rotate clockwise (for a horizontal/landscape display) or counterclockwise (for a vertical/portrait display) until it locks into position. Rotate the Photo frame clockwise if it is in landscape display or rotate the photo frame if it is in portrait display. The photo will automatically reorient.

# GETTING STARTED

## USING A MEMORY CARD

You can access media files from an external memory card as described below. This unit accepts memory cards up to these sizes: SD, SDHC, MMC, MS, MS Pro, MS DUO (with adaptor), XD, CF up to 4GB.

1



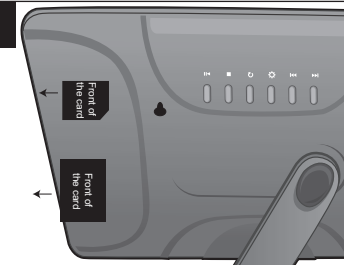
### TO INSERT A MEMORY CARD:

This unit can support SD (Secure Digital), MMC (MultiMedia Card), SDHC, MS (Memory Stick), MS Pro (Memory Stick Pro), xD, MS Duo (with adaptor) or CF (CompactFlash) memory cards.

Simply insert the card into the top Card Slot located at the right side of the unit, with the card facing towards the rear of the unit (as shown).

Insert the CF card in the same manner, but using the bottom Card Slot.

2



### TO REMOVE A MEMORY CARD:

Turn this unit off by pressing the Power switch to the Off (O) position. With the power off, remove the memory card by pulling it out gently. You may need to wiggle it back and forth to dislodge it from the frame.

## USING A USB FLASH DRIVE (Up to 4GB)

You can access media files from an external USB Flash Drive. Simply insert the USB Flash Drive into the USB jack (on the side of unit) and the files will be read just as if they were on a memory card. To remove, simply pull the USB Flash Drive out.

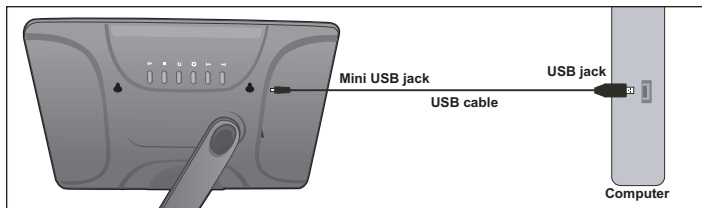
**Note:** When the unit is on and in the Main menu, insert the external memory card or USB Flash drive; it will play the slideshow automatically. If you remove the external memory card or the USB Flash Drive and insert another one, the slideshow will playback automatically again.



## GETTING STARTED (Continued)

### COPYING MEDIA FILES FROM YOUR COMPUTER

You can also copy media files directly from your computer to this digital frame using a mini USB cable (included).



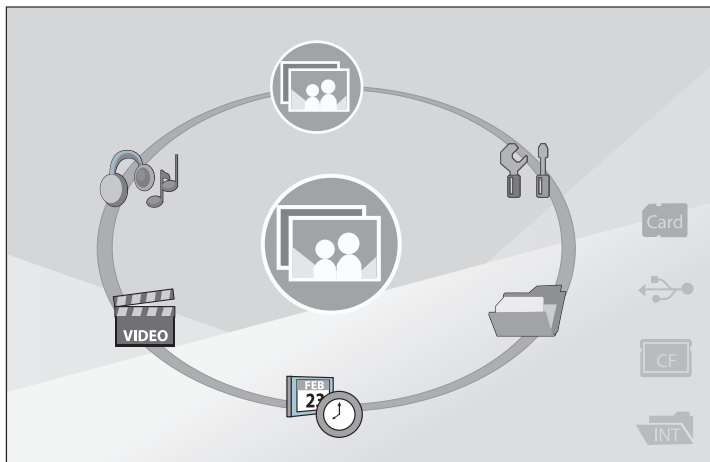
1. Connect this unit to an AC power source, as shown on page 6, and turn this unit on by pressing the Power switch to the On (I) position. This unit will either show the Main menu, the calendar or automatically start showing a photo slideshow from the internal memory (if the Open Screen option is set to Slideshow in the Setup menu). If the unit is in Slideshow mode or Calendar mode, press the MODE/Stop (■) button repeatedly to exit and access the Main menu.
2. Connect the mini USB cable to the mini USB jack located on the side of this unit and connect the other end to your computer (as shown).
3. On your computer, double-click My Computer. This unit will appear as a removable drive.
4. Navigate to the media files that you want to copy. Then, drag and drop them to the removable drive. (Refer to the owner's manual accompanying your computer for more information on copying files.)

#### NOTES:

- If a memory card is inserted (as shown on the previous page), the memory card will also appear as a removable drive in Step 3.
- You can also copy files from the digital frame or external memory card to your computer, if desired.
- Remove the USB Flash Drive before connecting the unit to your computer.

# OPERATION

**MAIN MENU:** Press the MODE/Stop (■) button repeatedly until the Main menu appears to access the Main menu.



Select a source (Card [to access the SD/MMC/MS/xD Card Slot], USB [to access the USB jack], CF [to access the CF Card Slot] or INT [to access the Internal Memory]) at the right side of the Main menu using the Navigation ▲ and/or ▼ button, then press the SELECT/Play/Pause (▶||) button. Then, select an option (i.e. Video) using the Navigation ◀ and/or ▶ button, then press the SELECT/Play/Pause (▶||) button. Press the Navigation ▲ and/or ▼ button to select the other source again.



**Photo:** Select to enter the Thumbnail view of the selected source, see page 14 for details.



**MP3:** Select to play MP3 files from the selected source, see page 15 for details.

## OPERATION (Continued)



**Video:** Select to play video files from the selected source, see page 16 for details.



**Calendar:** Select and the unit will enter the calendar/clock view and show a slideshow of your photos on the left. To pause a slideshow, press the SELECT/Play/Pause button, press again to resume playback. Press the Skip ◀◀ or ▶▶ button to skip to the previous or next picture. Press the Navigation ▲ and/or ▼ button to view the previous/next month or year on the Calendar page. Press the MODE/Stop (■) button to return to the current day.



**Folder:** Select to copy and/or delete files from the selected source, see page 17 for details.

**NOTE:** Internal files can only be deleted inside the Folder menu.



**Setup Menu:** Select to set the menu options, see page 19 for details.

**EXTERNAL MEMORY CONNECTION:** The external memory connection sources at the right side of the screen will light to indicate the following:

Yellow: The selected source will light yellow.

White: The unconnected sources will light white.

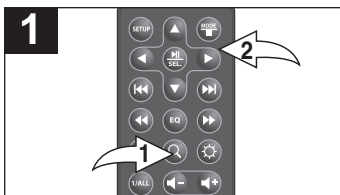
Blue: Connected sources that are not selected will light blue.

### IMPORTANT NOTE ON USING THIS MANUAL:

This manual will call out buttons on the remote control, but most buttons are also on the actual unit as multi-function buttons. For example, the Volume/Navigation DOWN/Brightness button on the main unit is separated into three buttons on the remote control: Volume DOWN, Navigation ▼ and Brightness.

# OPERATION (Continued)

## ZOOM (Photos/Videos)



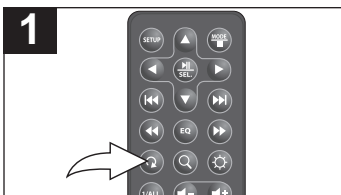
While viewing a photo, press the Zoom button ❶; the unit will enter Zoom Mode 1. Repeatedly press for Zoom Modes 2-4.

Use the Navigation ◀, ▶, ▲, ▼ buttons ❷ to move the photo on the screen.

Press the Zoom button ❶ repeatedly to view the normal size.

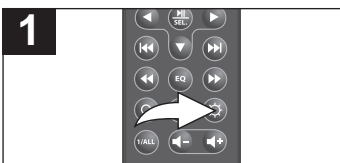
While viewing a video, press the Zoom button ❶; the unit will enter full screen mode. Press again for standard video viewing.

## ROTATE (Photos)



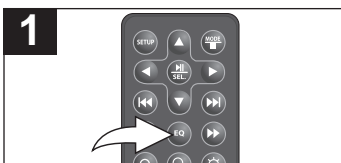
While viewing a photo, press the Rotate button to rotate the photo 90 degrees clockwise. Repeat to continue to rotate as desired.

## BRIGHTNESS (Photos)



While viewing a photo, press the Brightness button repeatedly to set the brightness.

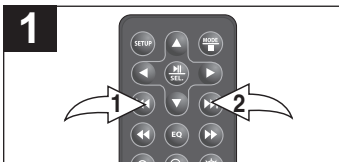
## EQ (MP3s)



While listening to an MP3 file, press the EQ button to cycle through the EQ settings (Nor {Normal}, Rock, Pop, Classic, Soft, Jazz or DBB {Bass Boost}).

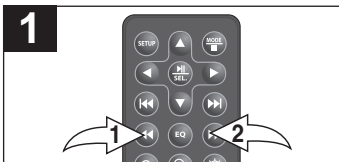
# OPERATION (Continued)

## SKIP



Press the Skip **⏮ 1** and/or **⏭ 2** button to skip to the previous or next picture, MP3 or video.

## SEARCH (MP3s/Videos)



Press the Search **⏮ 1** and/or **⏭ 2** button to start searching through the playing file. Press again to resume Normal playback.

## REPEAT/RANDOM (MP3s)



Press the Repeat 1/ALL button while playing an MP3 file to cycle through the modes as follows:

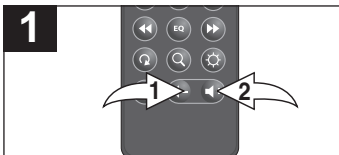
**⏮** Normal: Will play all of the files once and then stop.

**⏮** Random: While in Normal Playback mode, this will randomly play all the files.

**⏮** Repeat All: Will play all of the files continuously.

**⏮** Repeat One: Will play the selected file continuously until stopped.

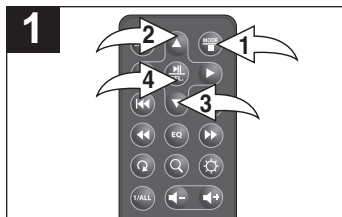
## VOLUME (MP3s/Videos)



**To adjust the main volume:**  
Press the Volume DOWN **1** and/or UP **2** button to increase and/or decrease the volume.

# OPERATION (Continued)

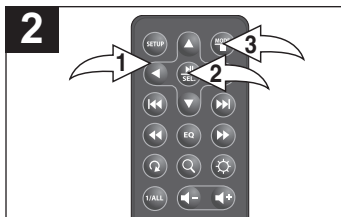
## BASIC PHOTO PLAYBACK (Supported format: JPEG)



Press the Power switch on the main unit to the On (I) position to turn the unit on.

This unit will either show the Main menu, the calendar or automatically start showing a photo slideshow (if the Open Screen option is set to Slideshow in the Setup menu).

Press the MODE/Stop (■) button ❶ repeatedly until the Main menu appears to access the Main menu. Select a source (Card, USB, CF or INT) at the right side of the Main menu using the Navigation ▲ ❷ and/or ▼ ❸ button, then press the SELECT/Play/Pause (▶||) button ❹.



Select Photo using the Navigation ◀, ▶ buttons ❶; then press the SELECT/Play/Pause (▶||) button ❷ to enter the Thumbnail view. Select the desired photo using the Navigation ◀, ▶, ▲, ▼ buttons ❶; then press the SELECT/Play/Pause (▶||) button ❷ again to show the selected photo (Browse mode). Press the SELECT/Play/Pause (▶||) button ❷ again to begin a slideshow of all photos from the selected media source.

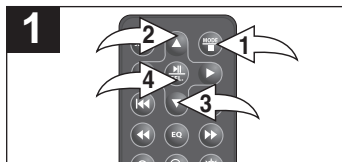
To stop playback and return to the Thumbnail view, press the MODE/Stop (■) button ❸. Press again to return to main menu.

### NOTES:

- The right side of the Thumbnail page will show the image dimensions and size. It will also show how many pages there are. To access another page, use the Navigation ▲ and/or ▼ button.
- To pause a slideshow, press the SELECT/Play/Pause (▶||) button. Press again to resume playback of the slideshow.

# OPERATION (Continued)

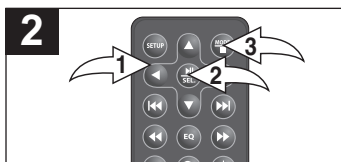
## BASIC MUSIC PLAYBACK (Supported format: MP3)



Press the Power switch on the main unit to the On (I) position to turn the unit on.

This unit will either show the Main menu, the calendar or automatically start showing a photo slideshow (if the Open Screen option is set to Slideshow in the Setup menu).

Press the MODE/Stop (■) button ❶ repeatedly until the Main menu appears to access the Main menu. Select a source (Card, USB, CF or INT) at the right side of the Main menu using the Navigation ▲ ❷ and/or ▼ ❸ button, then press the SELECT/Play/Pause (▶||) button ❹.



Select Music using the Navigation ◀, ▶ buttons ❶; then press the SELECT/Play/Pause (▶||) button ❷ to enter the Music mode; playback will automatically start. Skip/Search through the files as described on page 13.

Press the SELECT/Play/Pause (▶||) button ❷ to pause the file. Press again to resume playback. Press the MODE/Stop (■) button ❸ to stop playback. Press again to return to main menu.

### NOTES:

- The Song Title and Artist will appear in the display.
- See page 13 to select a Play mode (i.e. Repeat All, etc.).
- To access another page, use the Navigation ▲, ▼ buttons.

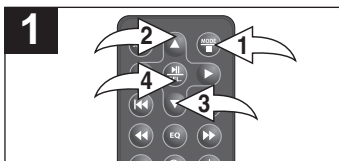
## OPERATION (Continued)

### BASIC VIDEO PLAYBACK (Supported format: AVI)

Video: MPEG-4 Video (AVI) Frame Rate: 30fps

Dimensions: 512 x 384/320 X 240

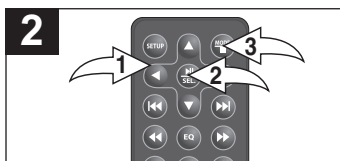
Audio: PCM/MP3 Encoded type: Simple Profile



Press the Power switch on the main unit to the On (I) position to turn the unit on.

This unit will either show the Main menu, the calendar or automatically start showing a photo slideshow (if the Open Screen option is set to Slideshow in the Setup menu).

Press the MODE/Stop (■) button ❶ repeatedly until the Main menu appears to access the Main menu. Select a source (Card, USB, CF or INT) at the right side of the Main menu using the Navigation ▲ ❷ and/or ▼ ❸ button, then press the SELECT/Play/Pause (▶||) button ❹.

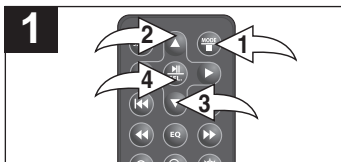


Select Video using the Navigation ◀, ▶ buttons ❶; then press the SELECT/Play/Pause (▶||) button ❷ to enter the Video mode. Select the desired video using Navigation ▲, ▼ buttons ❸, then press the SELECT/Play/Pause (▶||) button ❷ again to start playback. Skip/Search through the files as described on page 13. Press the SELECT/Play/Pause (▶||) button ❷ to pause the video. Press again to resume playback. Press the MODE/Stop (■) button ❸ to stop playback. Press again to return to main menu.



# OPERATION (Continued)

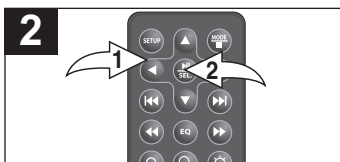
## DELETING A FILE/FOLDER



Press the Power switch on the main unit to the On (I) position to turn the unit on.

This unit will either show the Main menu, the calendar or automatically start showing a photo slideshow (if the Open Screen option is set to Slideshow in the Setup menu).

Press the MODE/Stop (■) button ❶ repeatedly until the Main menu appears to access the Main menu. Select a source (Card, USB, CF or INT) at the right side of the Main menu using the Navigation ▲ ❷ and/or ▼ ❸ button, then press the SELECT/Play/Pause (▶||) button ❹.



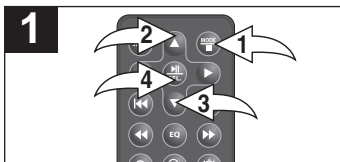
Select Folder using the Navigation ◀, ▶ buttons ❶; then press the SELECT/Play/Pause (▶||) button ❷ to enter the Folder menu. Select the desired file/folder to delete using the Navigation ▲, ▼ buttons ❶. Then either press the SELECT/Play/Pause (▶||) button ❷ to open the folder or press the Navigation ▶ button ❶; a pop-up menu will appear. Select Delete (highlighted in yellow) using the Navigation ▲, ▼ buttons ❶ then press the SELECT/Play/Pause (▶||) button ❷ to delete the file/folder. Select (highlight in white) Yes (to delete the file/folder) or No (to NOT delete the file/folder) using the Navigation ◀, ▶ buttons ❶; then press the SELECT/Play/Pause (▶||) button ❷.

### NOTE:

- Press the MODE/Stop (■) button to go back to the previous file index.

# OPERATION (Continued)

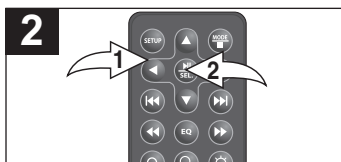
## COPYING A FILE/FOLDER TO INTERNAL MEMORY



Press the Power switch on the main unit to the On (I) position to turn the unit on.

This unit will either show the Main menu, the calendar or automatically start showing a photo slideshow (if the Open Screen option is set to Slideshow in the Setup menu).

Press the MODE/Stop (■) button ❶ repeatedly until the Main menu appears to access the Main menu. Select a source (Card, USB, CF) at the right side of the Main menu using the Navigation ▲ ❷ and/or ▼ ❸ button, then press the SELECT/Play/Pause (▶||) button ❹.



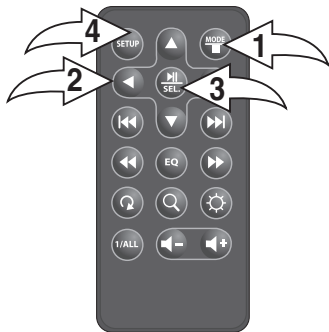
Select Folder using the Navigation ◀, ▶ buttons ❶; then press the SELECT/Play/Pause (▶||) button ❷ to enter the Folder menu. Select the desired file/folder to copy using the Navigation ▲, ▼ buttons ❶. Then either press the SELECT/Play/Pause (▶||) button ❷ to open the folder or press the Navigation ▶ button ❶; a pop-up menu will appear. Select Copy (highlighted in yellow) using the Navigation ▲, ▼ buttons ❶ then press the SELECT/Play/Pause (▶||) button ❷ to copy the file/folder. Select (highlight in white) Yes (to copy the file/folder) or No (to NOT copy the file/folder) using the Navigation ◀, ▶ buttons ❶; then press the SELECT/ Play/Pause (▶||) button ❷.

### NOTES:

- If more than one external memory is connected, select the target media (which contains the file) in the Main menu first.
- If the internal memory is full, "Disk is Full" will appear.
- If the file already exists, "File exist" will appear.

# OPERATION (Continued)

## SETUP MENU



The Setup menu lets you customize this digital frame by allowing you to turn the background music on or off, adjust the speed of the slideshow and more! Use the instructions on the following pages to navigate and change the options.

1. Press the Power switch on the main unit to the On (I) position to turn the unit on. This unit will either show the Main menu, the calendar or automatically start showing a photo slideshow (if the Open Screen option is set to Slideshow in the Setup menu).
2. Press the MODE/Stop (■) button ❶ repeatedly until the Main menu appears to access the Main menu.
3. Select Setup (the wrench and screwdriver icon) using the Navigation ◀, ▶ buttons ❷; then press the SELECT/Play/Pause (▶||) button ❸ to enter the Setup menu. (**NOTE:** You can also access the Setup menu by pressing the SETUP button ❹ while in the Main menu.)
4. Use the Navigation ▲, ▼ buttons ❷ to select one of the Setup options (i.e. “Language”), then press the SELECT/Play/Pause (▶||) button ❸ to select it; the option will be highlighted in yellow.
5. Use the Navigation ▲, ▼ buttons ❷ to change the desired option setting (i.e. choose between English, Spanish or French), then press the SELECT/Play/Pause (▶||) button ❸ to make the change.
6. Exit by pressing the MODE/Stop (■) button ❶.

CONTINUED ON THE NEXT PAGE

## OPERATION (Continued)



### SETUP OPTIONS

**Language:** Use this option to select the desired language for the menus. Choose from English, Spanish or French.

**Open Screen:** Use this option to set what will appear when the unit is turned on (a Slideshow, the Standard {Main Menu} or the Calendar Window). If it is set to slideshow, the internal memory photos will only playback. If there are no photos inside the internal memory, it will show the Main menu.

#### Date/Time

**Date:** After selecting this option, set the year using the Navigation ▲, ▼ buttons, then press the Navigation ► button and the month will be highlighted. Set the month using the Navigation ▲, ▼ buttons, then press the Navigation ► button and the day will be highlighted. Set the day using the Navigation ▲, ▼ buttons, then press the SELECT/Play/Pause (►||) button and the date will be set.

CONTINUED ON THE NEXT PAGE

## OPERATION (Continued)

**Time:** After selecting this option, set the hour using the Navigation ▲, ▼ buttons, then press the Navigation ► button and the minutes will be highlighted. Set the minutes using the Navigation ▲, ▼ buttons, then press the SELECT/Play/Pause (▶||) button and the time will be set.

**NOTE:** This unit uses a 24-hour, military-type time format in the Setup menu, but will display the time in 12-hour format on the Calendar/Clock page.

### Slideshow

**Interval:** Use this option to set the duration of time that will elapse between photos in the slideshow (1 Day, 12 Hours, 4 Hours, 1 Hour, 30 Minutes, 5 Minutes, 3 Minutes, 1 Minute, 30 Seconds, 15 Seconds or 5 Seconds).

**Transition:** Press the Navigation ► button and the Transition Effect will be highlighted. Choose from None, Random (will randomly select among the other modes to transition between the photos), Checkerboard, Fade In, Wipe Up, Blinds Top-Down or Stripes Cross. Press the SELECT/Play/Pause (▶||) button and the Transition Effect will be set.

### Music Setting

Use this option to choose whether your frame will play background music while viewing a slideshow. Choose to set Background Music to ON or OFF. The volume of the Background Music can be adjusted in the same way as normal music playback (see page 13).

### Screen Setup

**Brightness:** Use this option to adjust the brightness of the screen. Choose from 1-5.

**Panel:** Press the Navigation ► button and Panel will be highlighted. Use this option to select the mode in which the photos will be displayed. Choose from Full Screen (which will stretch the picture to fill the screen) or Normal (which will display the photo with its original proportions).

### Default

Use this option to reset all of the unit's settings to factory default settings (except the Time and Date). Select the Default setting and press the SELECT/Play/Pause (▶||) button to reset.

# TROUBLESHOOTING GUIDE

If you experience a problem with this unit, check the chart below before calling for service.

<b>SYMPTOM</b>	<b>CAUSE</b>	<b>SOLUTION</b>
Main unit, no power.	AC adapter is not connected.	Connect AC adapter as shown on page 6.
Remote, no power.	Battery not inserted or inserted incorrectly.	Insert battery correctly as shown on page 6.
No photos in frame.	No photos are present in Internal Flash or external media source.	Copy files onto the frame or insert external media source, see page 9.
Computer does not recognize frame as a Removable Disk.	Mini USB cable not connected securely.	Secure mini USB cable connection.
	Frame is not turned on.	Turn on frame and connect the mini USB cable again as shown on page 9.

# SPECIFICATIONS

## GENERAL:

Power Source .....	AC Adapter, DC 12V ⊖⊕
Weight.....	1.5 Lbs
Dimensions .....	11" (H) x 7.5" (W) x 0.75" (D)
Weight and dimensions are approximate.	
LCD Display Size.....	10" (measured diagonally)
Resolution.....	800 x 480
Internal Memory .....	128MB
Speaker .....	2 x 1 W

Specifications are subject to change without notice.

**FOR ADDITIONAL SET-UP OR OPERATING ASSISTANCE, PLEASE VISIT OUR WEBSITE AT:**

**[WWW.MEMOREXELECTRONICS.COM](http://WWW.MEMOREXELECTRONICS.COM)**

**OR CONTACT CUSTOMER SERVICE:**

For customers calling within US, call 1-800-919-3647.

For customers calling within Mexico, call 001-866-580-8316.

For customers calling within Canada call 1-866-928-2349.

**PLEASE KEEP ALL PACKAGING MATERIAL FOR AT LEAST 90 DAYS IN CASE YOU NEED TO RETURN THIS PRODUCT TO YOUR PLACE OF PURCHASE OR IMATION ELECTRONICS PRODUCTS.**

**FOR CONSUMER REPLACEABLE PART(S), SEE PART NUMBER(S) ON PAGES 4 AND 5 AND THEN CONTACT FOX INTERNATIONAL AT 1-800-321-6993.**