

ViewPower VMware Shutdown Wizard
User's Manual

Table of Contents

1. Introduction.....	2
2. ViewPower VMware Shutdown Wizard install, quick start, stop, and uninstall.....	2
2-1. Install	2
2-2.Quick Start.....	6
2-3.Stop	7
2-4.Uninstall	7

1. Introduction

ViewPower VMware Shutdown Wizard is a shutdown software specially designed for VMware system. It will receive the shutdown command from ViewPower to turn off all the running virtual client units with VMware system.

Main features:

a. Supported VMware version

1	VMware ESX 3.5
2	VMware ESXI 4.0

b. Compatible version for ViewPower software.

1	ViewPower Pro 1.00 and version above
2	ViewPower 2.07 SP1 and version above

c. Power management pattern.

1	Shutdown
2	Suspend

d. Supported power management pattern with VMware Tools

	Shutdown	Suspend
VMware Tools running	V	V
VMware Tools not running	X	V

e. The shutdown actions executed in virtual OS from ViewPower VMware Shutdown Wizard

VMware Virtual OS	VMware Tools	Actions
Windows	Installed	Take the shutdown action first. If this shutdown action is not completed in 120 seconds, then it will suspend.
	Not installed	Suspend
Linux	Installed	Shutdown
	Not installed	Suspend
Unix	Installed	Shutdown
	Not installed	Suspend
MAC	Not available	Suspend

2. ViewPower VMware Shutdown Wizard install, quick start, stop, and uninstall

2-1. Install

Required software: VMware Infrastructure Client.

File name for ViewPower VMware Shutdown Wizard software: VPVMShutdownWizard.tar.gz

1) Upload software to VMware ESX system.

- a. Execute VMware Infrastructure Client
- b. Click inventory button from navigation bar to select the main category of virtual machine.

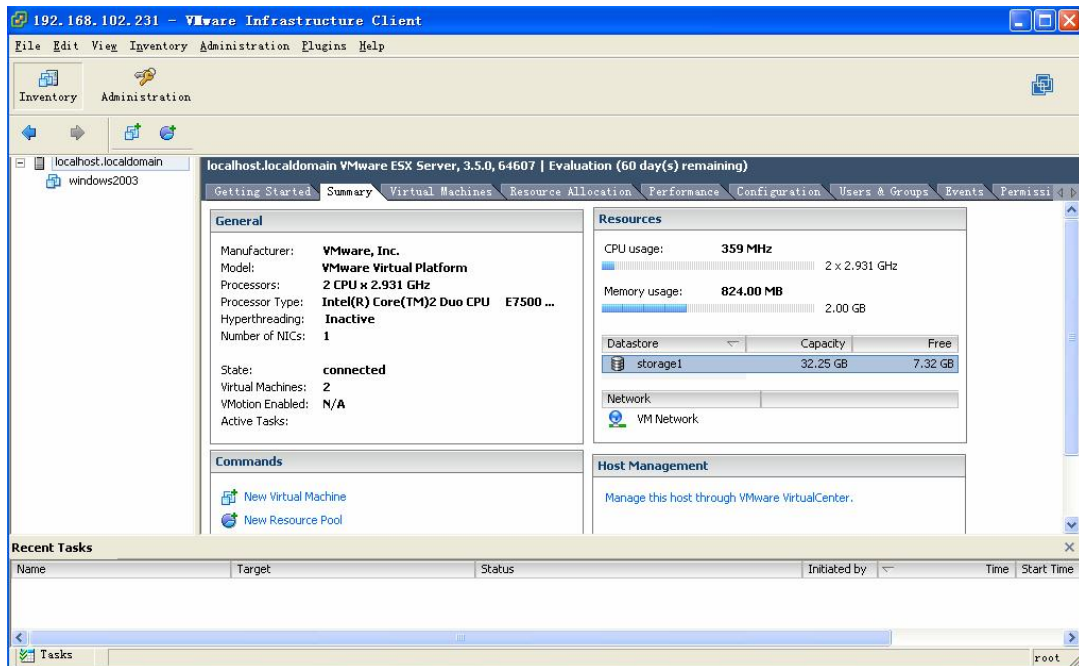



Figure 1.

- c. Click "Summary" tab. Then double click Datastore icon  storage1 in "Resources" column as shown above. (storage1: Name of the Datastore which may be different under different configuration). It will pop up Datastore Browser Window as shown in figure 2.

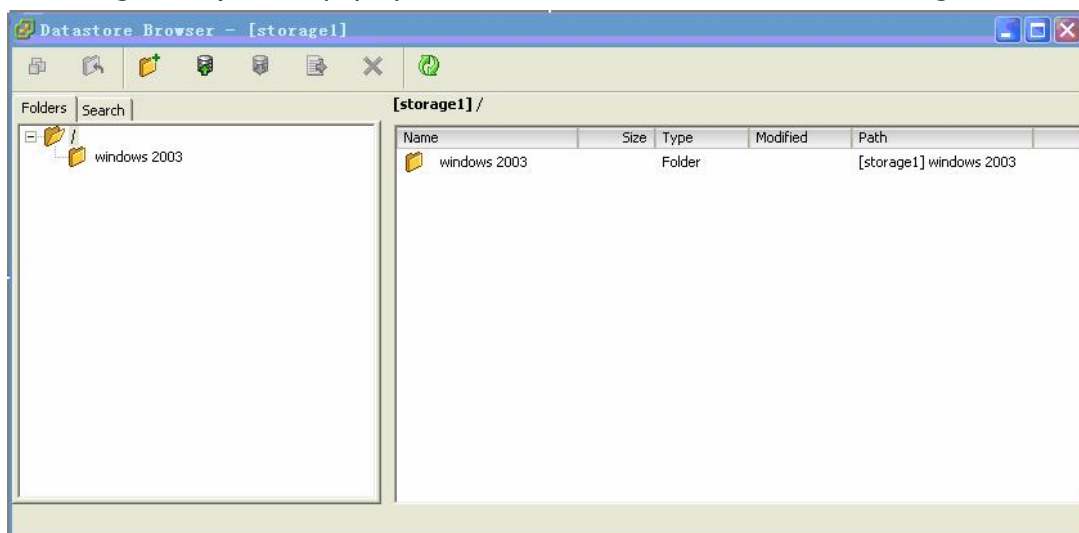



Figure 2.

- d. Click  icon from tool bar, and then select "Upload File..." (Refer to Figure 3)

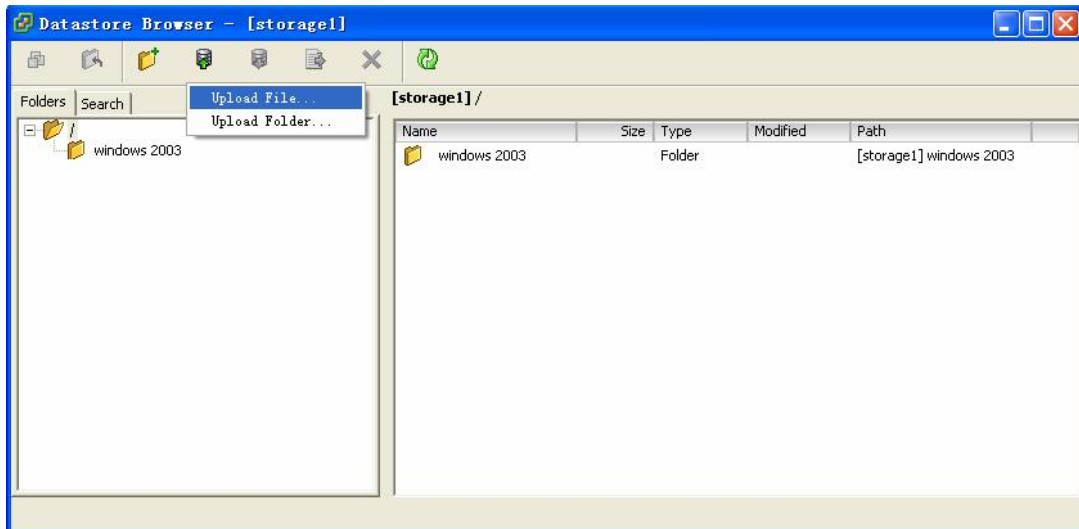


Figure 3.

- e. A dialog of "upload item" will pop up. (Refer to figure 4)

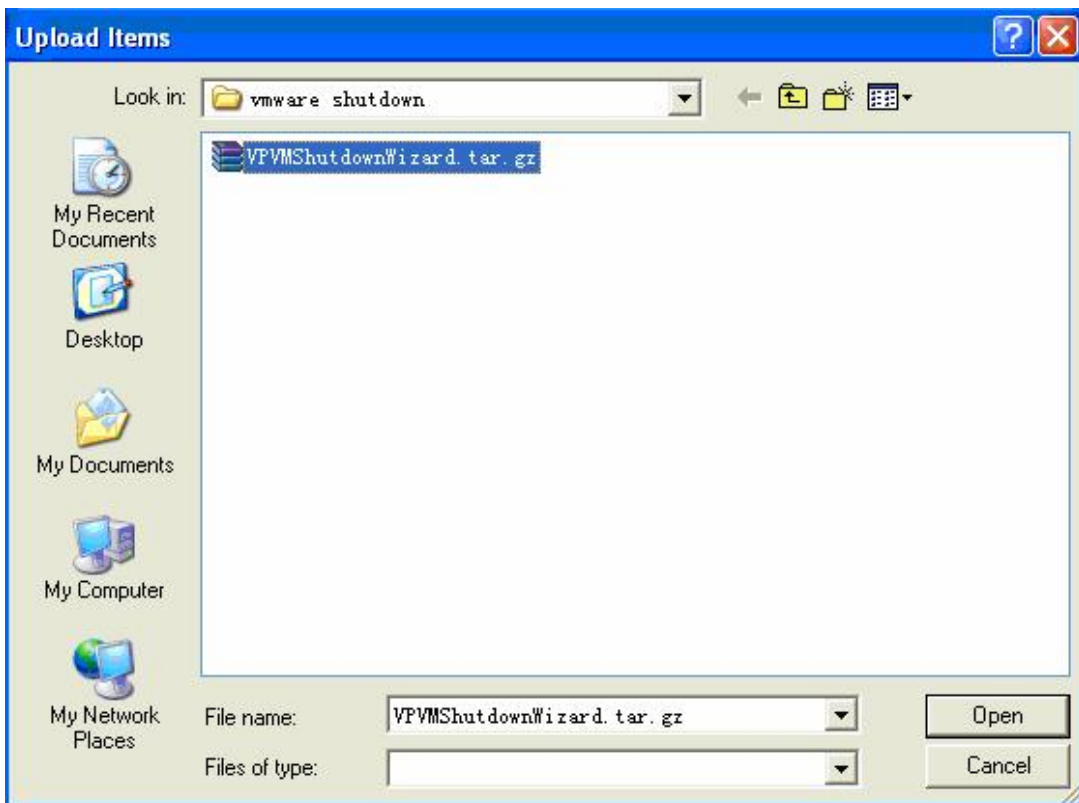


Figure 4. "Upload Items" dialog

- f. Select the VPVMShutdownWizard.tar.gz file and click "Open" button to upload the compressed package as shown in Figure 5.

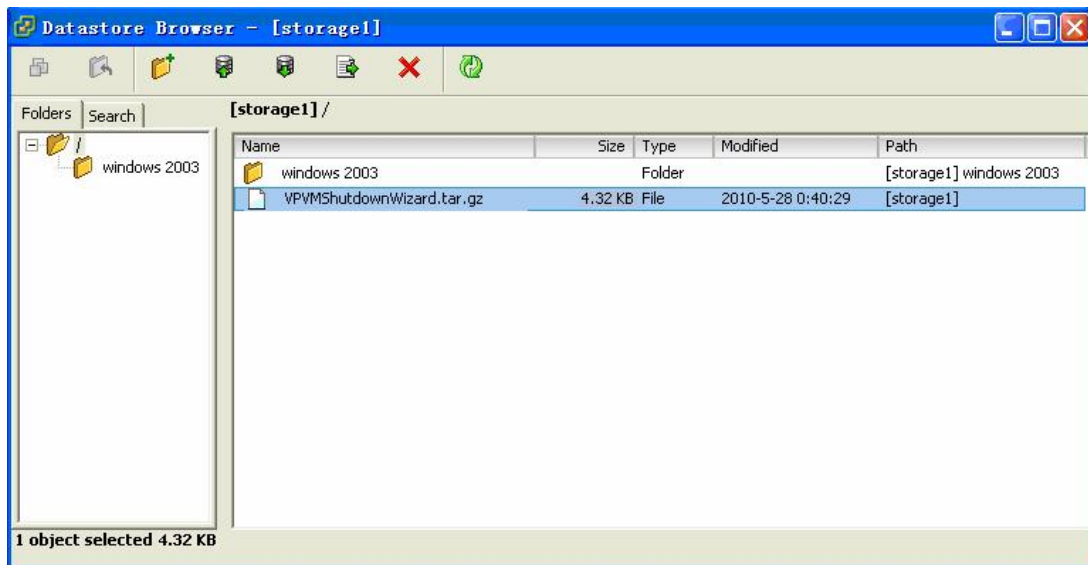


Figure 5

2) Install Software

- a. Log in to Console page of VMware ESX system. Then, enter the following address "cd /vmfs/volumes/storage1/". This can also be varied due to different storage name. (shown in figure 6)

```
[root@localhost root]# cd /vmfs/volumes/storage1/
[root@localhost storage1]# ls
VPVMShutdownWizard.tar.gz  windows2003
[root@localhost storage1]#
[root@localhost storage1]#
```

Figure 6.

- b. Run "tar -zxvf VPVMShutdownWizard.tar.gz" command to unzip the compressed file. Refer to figure 7.

```
[root@localhost root]# cd /vmfs/volumes/storage1/
[root@localhost storage1]# ls
VPVMShutdownWizard.tar.gz  windows2003
[root@localhost storage1]# tar -zxvf VPVMShutdownWizard.tar.gz
VPVMShutdownWizard/
VPVMShutdownWizard/INSTALL
VPVMShutdownWizard/ViewPower/
VPVMShutdownWizard/ViewPower/ShutdownWizard/
VPVMShutdownWizard/ViewPower/ShutdownWizard/ShutdownWizard
VPVMShutdownWizard/ViewPower/ShutdownWizard/UNINSTALL
VPVMShutdownWizard/ViewPower/ShutdownWizard/shutdownscript
VPVMShutdownWizard/ViewPower/ShutdownWizard/stop
VPVMShutdownWizard/ViewPower/ShutdownWizard/shutdownsystem
[root@localhost ~]#
```

Figure 7.

- c. Key in "cd VPVMShutdownWizard" to access the VPVMShutdownWizard catalogue. Then run "./INSTALL" to install and auto run the software. Refer to figure 8.

```

[root@localhost storage1]# ls
VPVMShutdownWizard.tar.gz  windows2003
[root@localhost storage1]# tar -zxvf VPVMShutdownWizard.tar.gz
VPVMShutdownWizard/
VPVMShutdownWizard/INSTALL
VPVMShutdownWizard/ViewPower/
VPVMShutdownWizard/ViewPower/ShutdownWizard/
VPVMShutdownWizard/ViewPower/ShutdownWizard/ShutdownWizard
VPVMShutdownWizard/ViewPower/ShutdownWizard/UNINSTALL
VPVMShutdownWizard/ViewPower/ShutdownWizard/shutdownscript
VPVMShutdownWizard/ViewPower/ShutdownWizard/stop
VPVMShutdownWizard/ViewPower/ShutdownWizard/shutdownsystem
[root@localhost ~]# cd VPVMShutdownWizard
[root@localhost VPVMShutdownWizard]# ls
INSTALL  ViewPower
[root@localhost VPVMShutdownWizard]# ./INSTALL
ViewPower VMware Shutdown Wizard V1.00Beta
copy file to /usr/share
initialize environment
install over!
[root@localhost VPVMShutdownWizard]# █

```

Figure 8.

- d. After installation , the default path is set to `"/usr/share/ViewPower/ShutdownWizard/"` as shown in Figure 9.

```

[root@localhost ~]# cd /usr/share/ViewPower/ShutdownWizard/
[root@localhost ShutdownWizard]# ls
init_cfg  run  shutdownscript  shutdownsystem  ShutdownWizard  stop  UNINSTALL
[root@localhost ShutdownWizard]# █

```

Figure 9.

2-2. Quick Start

It will run automatically after installation. If it's not automatically running, you may key in the `"ps -e | grep ShutdownWizard"` for double checking. Once it's not running as requested, key in `"cd /usr/share/ViewPower/ShutdownWizard/"` to enter installation menu and then enter `"/run"` to manually start the software.

```

[root@localhost ~]# cd /usr/share/ViewPower/ShutdownWizard/
[root@localhost ShutdownWizard]# ls
run  shutdownscript  shutdownsystem  ShutdownWizard  stop  UNINSTALL
[root@localhost ShutdownWizard]# ./run
[root@localhost ShutdownWizard]# ps -e | grep ShutdownWizard
2028 pts/1    00:00:00 ShutdownWizard
[root@localhost ShutdownWizard]# █

```

Figure 10.

2-3. Stop

Key in the path of "cd /usr/share/ViewPower/ShutdownWizard/" and then, run the command of "./stop" as shown below.

```
[root@localhost ~]# cd /usr/share/ViewPower/ShutdownWizard/
[root@localhost ShutdownWizard]# ls
run shutdownscript shutdownsystem ShutdownWizard stop UNINSTALL
[root@localhost ShutdownWizard]# ./stop
Stop ViewPower VMware Shutdown Wizard V1.00Beta!
[root@localhost ShutdownWizard]# █
```

Figure 11.

2-4. Uninstall

Key in the path of "cd /usr/share/ViewPower/ShutdownWizard/" to enter the installation menu. Then, run the command of "./UNINSTALL" to uninstall the software. (Refer to figure 12)

```
[root@localhost root]# cd /usr/share/ViewPower/ShutdownWizard/
[root@localhost ShutdownWizard]# ls
init_cfg run shutdownscript shutdownsystem ShutdownWizard stop UNINSTALL
[root@localhost ShutdownWizard]# ls
init_cfg run shutdownscript shutdownsystem ShutdownWizard stop UNINSTALL
[root@localhost ShutdownWizard]# ./UNINSTALL
Uninstall ViewPower VMware Shutdown Wizard V1.00Beta
wait for a moment.Don't interrupt,please.
remove ShutdownWizard ...
uninstall ok.
[root@localhost ShutdownWizard]# █
```

Figure 12