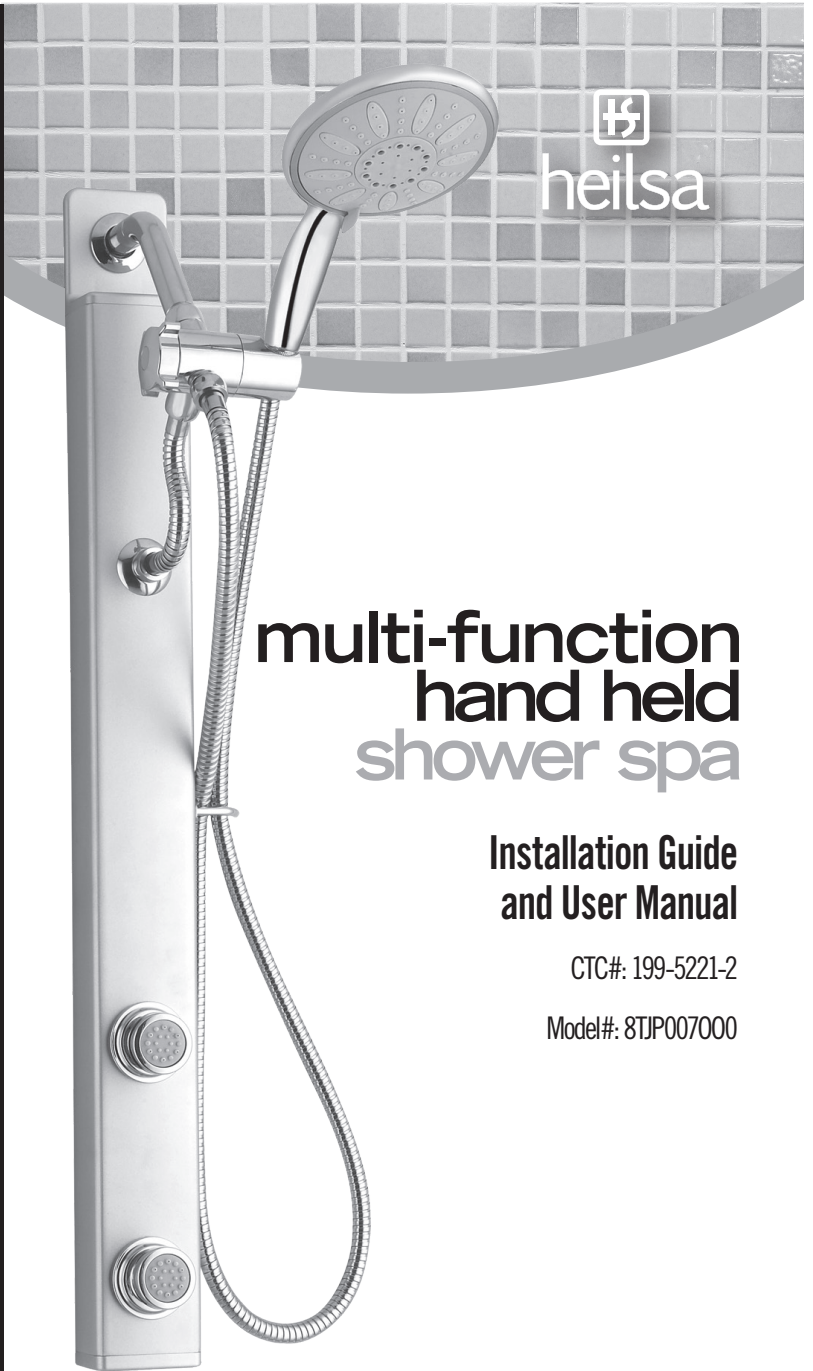


Shower spa

GET THE SPA EXPERIENCE AT HOME



heilsa

multi-function hand held shower spa

Installation Guide and User Manual

CTC#: 199-5221-2

Model#: 8TJP007000

Please read and save this guide before using your shower spa.
Store the guide in a safe place for future reference.

IMPORTANT

If you have any problems with this unit or there are missing or damaged parts, please call toll free: 1-800-459-4409 (8:30 am to 5:00 pm, EST). DO NOT RETURN THE UNIT TO THE PLACE OF PURCHASE before calling the toll free number above.

1. Carefully check the unit prior to installation to ensure there is no damage. Installing a damaged unit will void the warranty. Do not dispose of any packaging until you are satisfied with this product.
2. Your installation must comply with all local plumbing building codes.
3. Have a qualified tradesman do or approve your plumbing installation.
4. Protect the entire surface during installation.
5. Always wear safety goggles and gloves in order to avoid personal injury.

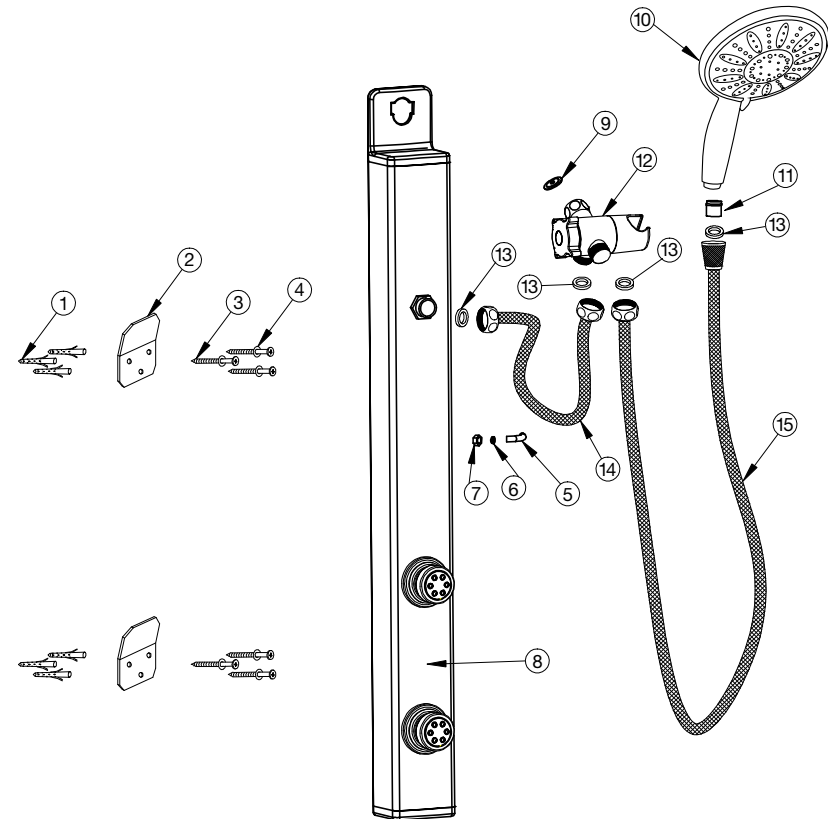
TOOLS REQUIRED

- Adjustable wrench
- Carpenter's square
- Tape measure
- Pencil
- Teflon tape
- Electric drill
- Drill bit 7 mm or ¼"
- Phillips screwdriver

DANGER

Do not place electrical appliances close to the shower enclosure.

CONTENTS

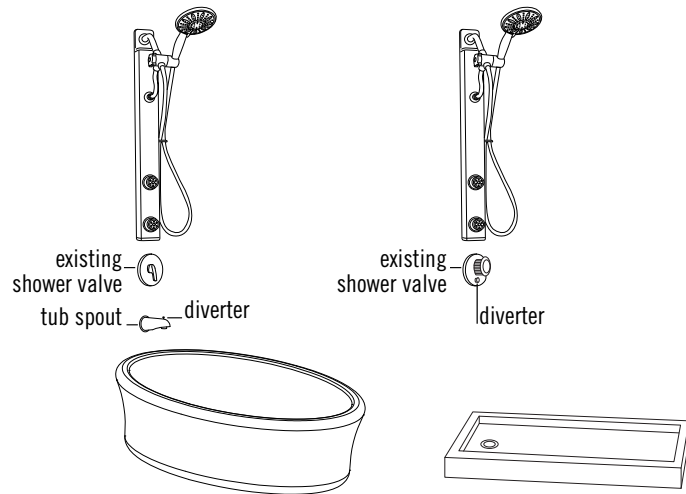


- | | | |
|----------------------------|------------------|-------------------|
| 1. Wall anchors | 6. Non-slip ring | 11. Check valve |
| 2. Wall bracket | 7. Nut | 12. 3-way valve |
| 3. Screws | 8. Shower column | 13. Rubber washer |
| 4. Stainless steel washers | 9. Regulator | 14. Short hose |
| 5. Small hook | 10. Hand shower | 15. Long hose |

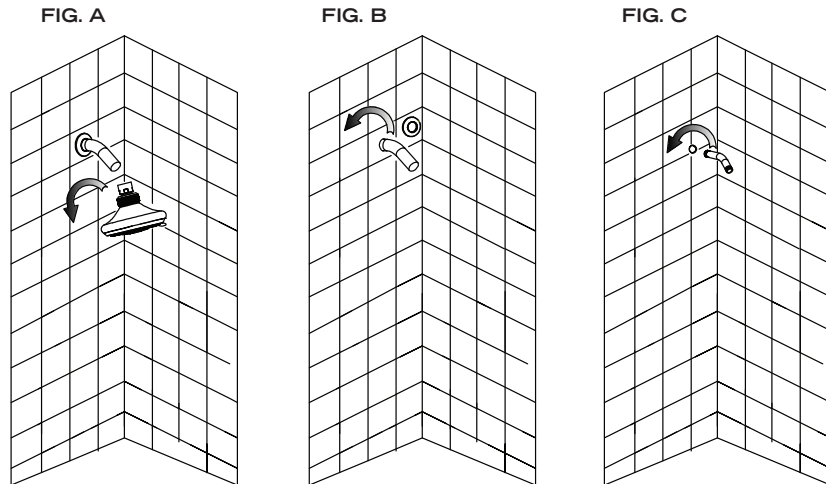
INSTALLATION

This unit is designed to be installed using your existing plumbing. Your shower valve, diverter valve or diverter tub spout will be used in its current position and will operate as it was used before with your current shower head.

The current shower arm and decorative ring will be removed and used for this shower panel.



1. Screw off your existing shower head from the shower arm as shown in Fig. A. Take out the decorative ring from the shower arm as shown in Fig. B. Screw out the shower arm from the wall as shown in Fig. C. The shower arm and decorative ring will be used to connect the water outlet and the shower panel in the following steps.



2. Mark the drill holes $\varnothing 7$ mm as shown in Fig. D. The three holes consist of two holes drilled side by side, 17 mm apart from the center of each hole with the centerline running between them. The third hole is drilled on the centerline 20 mm below the first two holes. The upper two holes should be drilled below the water outlet in the wall, 170 mm down vertically from the center of the existing water outlet. The two group holes are 480 mm in vertical distance from each other.
3. Insert wall anchors (1) into the pre-drilled holes. Secure the wall brackets (2) to the wall with the screws (3) and stainless steel washers (4). Fig. E.

FIG. D

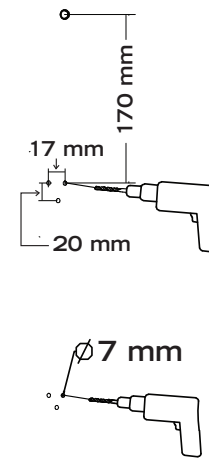
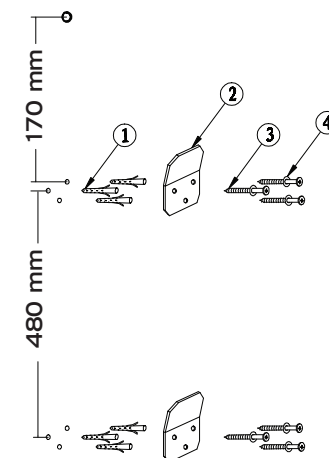


FIG. E



- Secure the small hook (5) to the side of the shower column (8) using non-slip ring (6) and nut (7). Fig. F.
- Hang the shower column (8) on the wall brackets (2) as shown in Fig. G. Make sure the top inlet hole of the shower column aligns with the water outlet on the wall.

FIG. F

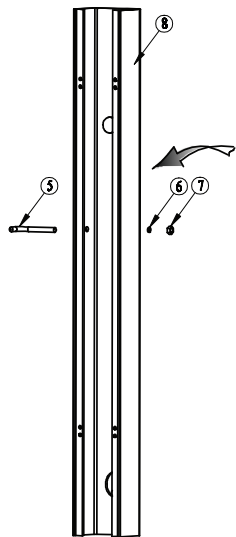
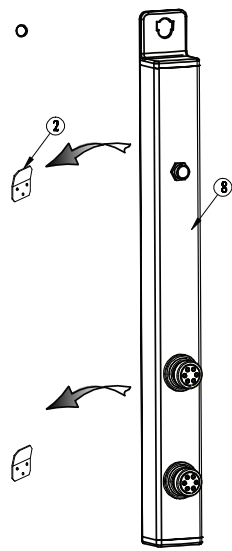


FIG. G



- Wrap some Teflon tape around the original wall install end of the shower arm as mentioned in step 1. Make sure it is the same end that was installed into the wall (if installed in reverse direction, there will be NO WATER FLOW). Secure the shower arm to the water outlet in the wall. Fig. H.
- Attach the decorative ring to the shower arm to cover the joint area. Fig. I.
- A regulator (9) is pre-installed into the 3-way valve (12), screw the end of the 3-way valve (12) tightly to the shower arm. Fig. J.

FIG. H

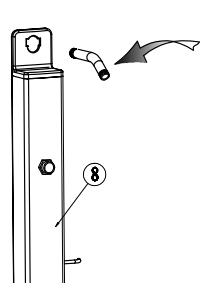


FIG. I

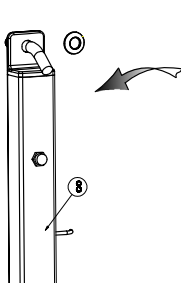
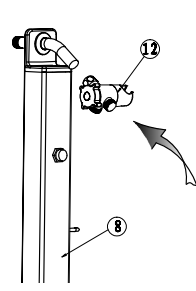


FIG. J



- Place the rubber washers (13) into each nut on the short hose (14). Secure one nut to the 3-way valve (12) and the other to the water inlet on the shower column (8). Fig. K.
- Place the rubber washers (13) into each nut of the long hose (15), secure the hexagon nut to the 3-way valve (12) and the knurled nut to the hand shower (10). The check valve (11) has been pre-installed into the hand shower. Fig. L.

FIG. K

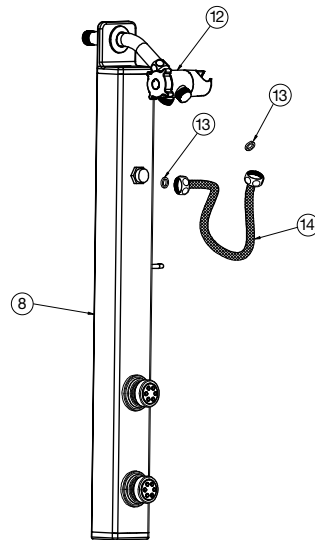
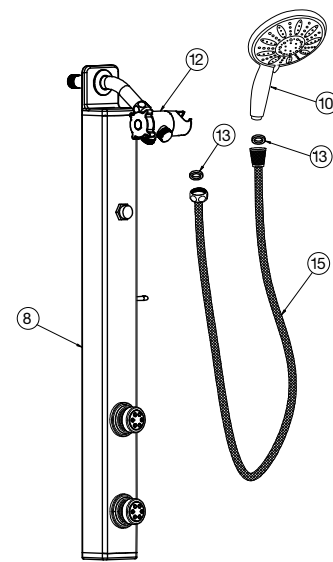


FIG. L



IMPORTANT NOTES

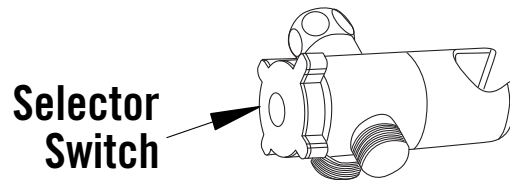
- Shower arm and adoring ring are not supplied. Use the current one from your original shower installation.
- The regulator (9) and the check valve (11) have been pre-installed. There is no need to install them.

OPERATION

To use the shower panel, open your shower valve (as per your normal use), flip the diverter valve on the shower valve or on the tub spout, to redirect water from the toe tester or tub's spout to the shower.

Use the selector switch as shown to the right to choose between the three below options:

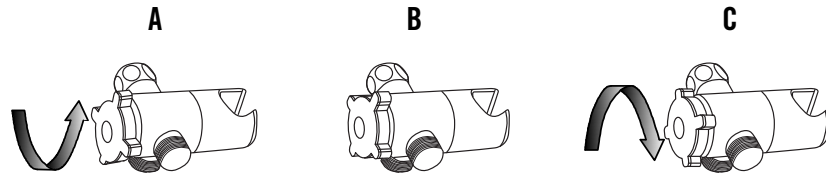
- A. Hand shower and body jets (combined)
- B. Body jets
- C. Hand shower



Choose option A by rotating the selector counter clockwise toward the top, until you hear a "click". The water flow may be lower than the single body jets or hand shower.

Choose option B by rotating the selector in either direction in the middle range until you hear a "click".

Choose option C by rotating the selector clockwise toward the bottom until you hear a "click".



Adjust water temperature and pressure using your existing shower valve.

TROUBLESHOOTING

1. Ensure rubber washers (13) are installed properly to avoid leaks.
2. Make sure you drill holes according to the instructions, and secure the panel on the wall brackets (2).
3. If you find that water pressure or volume is low, clean the mesh gaskets in your existing shower arm.
4. If there is no water flow, check that the hoses are not bent or kinked after final installation. Check the water connections for proper flow.

CARE AND MAINTENANCE

- After use, rinse the shower column with water using the hand shower to remove any soap deposits.
- Never use abrasive cleaners as they will scratch the finish.

REPLACEMENT PARTS

If you are missing or require replacement parts, please call customer service at 1-800-459-4409 (Monday–Friday, 8:30 am–5:00 pm, EST) or email us at custsupport@qualitycraft.ca. Identify the required part(s) and have the replacement part number ready when you call.

PART CODE	DESCRIPTION	QTY	
QCGPH2A01 (assembly pack)	Screws	6	
	Stainless steel washers	6	
	Wall anchors	6	
	Mounting brackets	2	
QCGPH2A02	Rubber washers	4	
QCGPH2A03	Small hook with skid proof washer and nut	1	
QCGPH2A04	3-Way valve	1	
QCGPH2A05	Long shower hose	1	
QCGPH2A06	Short shower hose	1	
QCGPH2A07	Hand shower head	1	

1-YEAR HOME USE WARRANTY

This unit is warranted to the original purchaser to be free of defects in material and workmanship for one (1) year from the date of purchase. This warranty does not extend to commercial or institutional use or installation. Quality Craft will repair or replace, at its option, the unit or its equipment in accordance with the following terms and conditions.

WARRANTY LIMITATIONS

Our warranty does not cover defects, damage, or failure caused by the common carrier, installer, user, or other person, or resulting from, without limitation, any of the following: careless handling (lifting unit by plumbing, abrading finish, etc.); modification of any type for any reason (including modification to meet local codes); improper installation (including installation not in accordance with instructions and specifications provided with the unit); connections supplied by the installer of the equipment; improper voltage supply or unauthorized electrical modification; misuse; incorrect operation, or lack of proper routine maintenance; operation of the unit without specified minimum amount of water or at inappropriate water temperature; use of abrasive or improper cleaners; or acts of God, such as lightning, floods, earthquakes, etc.

In addition, Quality Craft WILL NOT BE RESPONSIBLE FOR INCIDENTAL OR CONSEQUENTIAL DAMAGES or losses arising from any cause (e.g., water damage to carpet, ceiling, loss of use, etc.) including its own negligence; damages to, respecting, or resulting from: plated parts when chemicals are used in or on the unit; optional equipment not manufactured by Quality Craft or defects that should have been discovered before installation. This limited warranty does not include: labor, transportation, or other costs incurred in the removal and/or reinstallation of the original unit and/or installation of a replacement unit; any costs relating to obtaining access for repair; or loss of use damage, including loss of sales, profit or business advantage of any kind under any circumstances.

It is the responsibility of the installer/owner to determine specific local code compliance prior to installation of the product. Quality Craft makes no representation or warranty regarding, and will not be responsible for any code compliance. Quality Craft does not warrant connections of water supply fittings and piping, or fill systems. Nor is it responsible for damage to the shower panel which occurs during any installation procedure.

If you have a problem with your unit before installation, please return it to the place of purchase. If you have a problem with your unit during or after installation; please call Quality Craft Customer Service at 1-800-459-4409 (8:30 am to 5:00 pm, EST) or through our website at www.qualitycraft.com.

WARRANTY CLAIM PROCEDURE

If a claimable defect occurs, please fill out a claim form through our website at: www.qualitycraft.com or contact our customer service department at 1-800-459-4409 (8:30 am to 5:00 pm, EST).

Before you make your claim call, please make sure you have:

1. The description of the shower spa
2. Proof of sale
3. Details regarding the defect
4. Name and address of the owner and installer

Claims must be filled out in writing and returned within six (6) months of appearance of defect. Failure to comply with this stipulation will make the warranty null and void. We reserve the right to a thirty-day (30) delay following receipt of claim in which to inspect the product. We assume no responsibility for labor costs or removing/replacing a previously installed product or transportation or return of a product.

Imported by

QualityCraft

Laval, Québec,

Canada H7C 0A5

1-800-459-4409

www.qualitycraft.com

Made in China