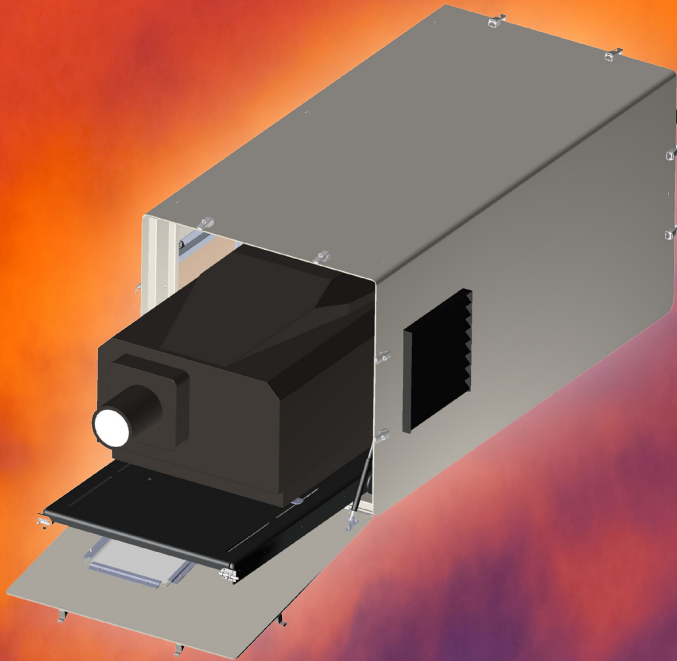




TEMPEST

Any Projector. Anywhere.



CYCLONE Projector Enclosures

Outdoor



Video Mapping
Advertising
Theme Parks
Historic Sites

HUSH



Digital Cinema
Training Rooms
Live Theatre
Meeting Rooms

Outdoors or in, the new generation Cyclone enclosures from Tempest will protect your investment and ensure long equipment life. Proven outdoors in every climate type, and now running silently in meeting rooms and theatres around the world, the new Cyclones are the best protection there is for your 14-40,000 lumen projector.

And Cyclone HUSH enclosures make boothless cinema a reality. Silent operation, no lost space.

Tempest – undisputed leader in specialist enclosures for high powered lighting and digital projectors – now offers a spectacular set of enhancements to the world's toughest enclosure family for large format projectors.

What's New?

- Over 20 models, each specifically tailored to a projector type
- Outdoor versions for every climate
- Indoor HUSH versions, eliminating projector noise
- New filter technology beats dust, sand, salt, smoke and oil
- Tempest *Goldilocks™* Digital Enclosure Control Operating System (patents pending) – beats condensation, saves energy
- No-return Exhaust Flaps (Outdoor models)
- Portrait Options on all models

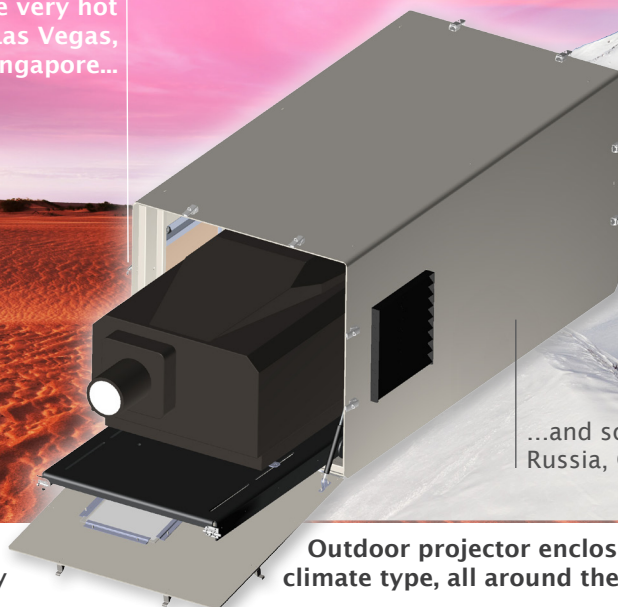
What's Not?

- High-velocity forced air cooling when projector lamp is on – effective in all temperatures, no condensation risk
- Temperature, humidity and condensation control
- Remote configuration and monitoring
- Front or rear projector slide for relamping and service
- Highest quality materials – no ferrous metals, no corrosion
- Epoxy powder coated aluminum housing
- Stainless steel hardware
- Tempered optical glass projection window
- Tempest Service – we're with you all the way

Cyclone Projector Enclosures. Any projector. Anywhere.



Tempest enclosures are installed in some very hot places — think Las Vegas, Dubai, Singapore...



Cyclone 8400 with Christie HD35K Roadie

...and some very cold ones - Russia, Canada, Finland.

Tempest Cyclone every day in every

Outdoor projector enclosures are running climate type, all around the world.

Rugged and Dependable

Cyclone is extremely robust, constructed from heavy gauge aluminum and stainless steel, and epoxy powder-coated for long, maintenance-free life.

Projector Mounting

Each Cyclone model is tailored specifically for the projector to be housed. The projector mounts on an aluminum tray that may be specified to slide out of the front or the back for service and relamping.

Stacking

Cyclone enclosures may be stacked, with an air gap of 4"/10cm between each enclosure, with the Cyclone Stacking Kit accessory.

Part # 8000.SK

New Filter Technology

All new Cyclones come with high performance hydrophobic air filters that block dust, sand, oil, moisture and contaminants like salt and chlorine, keeping the interior clean and pristine in any environment.

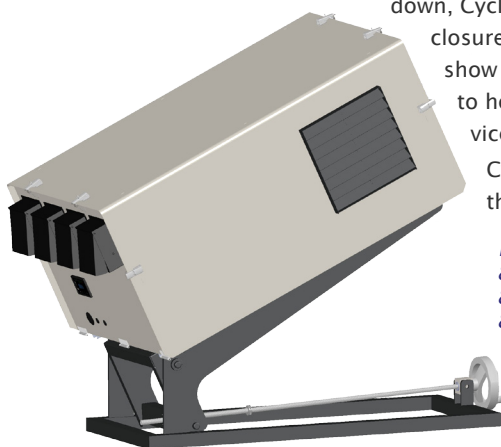
No-return Exhaust

Exhaust doors on Outdoor Cyclone models open when the enclosure fans are running and close automatically when not in use, further protecting the interior from windblown particulates.

Extreme Temperatures?

Specify a Cyclone Thermal Insulation kit to moderate temperatures in hot (>40°C) and cold (<0°C) locations. thermal insulation saves energy and prolongs equipment life.

Part # 8000.TI



Cyclone 8200 with 8200.TK Cyclevator

Remote Monitoring

Now you can monitor the environment in your enclosures over a simple RS485 link with our RDM interface and PC application.



Part # 2000.190

Cyclevator Tilt Kit

It's important that the enclosure should be level when the projector slides out for service. In video-mapping jobs where the projection angle is up or down, Cyclevator raises the enclosure to a predetermined show position, then back to horizontal for safe service and relamping.

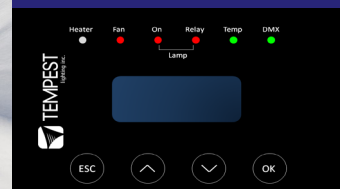
Cyclevator comes in three sizes:

Part #s
8000.TK (8000 Series)
8200.TK (8200 Series)
8400.TK (8400 Series)

Outdoor



Video Mapping
Advertising
Theme Parks
Historic Sites



Goldilocks™

How do we keep projectors from roasting when it's 50°C and there's no shade?

And prevent condensation from destroying your projector overnight?

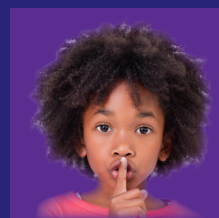
Tempest's new Goldilocks™ Operating System (patents pending) brings enclosure control to a new level:

Goldilocks keeps the air temperature inside your enclosure just right, removing heat from the projector when the lamp is on or when the enclosure is heated by the sun. We're changing the air about once every second.

Goldilocks uses heaters to maintain a minimum temperature in cold climates.

And Goldilocks tracks temperature and humidity 24/7, keeping relative humidity inside your enclosure just right by using heaters to raise the air temperature when needed, adapting constantly to prevent deadly condensation.

HUSH



Digital Cinema
Meeting Rooms
Home Theatre
Churches
Live Theatre

Cyclone 8100 HUSH with
Panasonic PT-DS20K

Now you don't need a projection booth!

Cyclone HUSH enclosures silence any projector in
indoor acoustically sensitive areas.

Boothless Cinema

Now you can safely — and
silently — operate business and
cinema projectors up to 40,000
lumens without noise, and
without sacrificing seats or real
estate.

Retrofits: adding projection to
a training room, a lecture hall or
a live theatre where there's no
booth? No problem.

New construction: don't want
to sacrifice building space or
revenue-earning seats? No
problem.

**Now you can use today's most
powerful projectors safely
and silently, with Cyclone
HUSH projector enclosures.**

The Sound of Silence

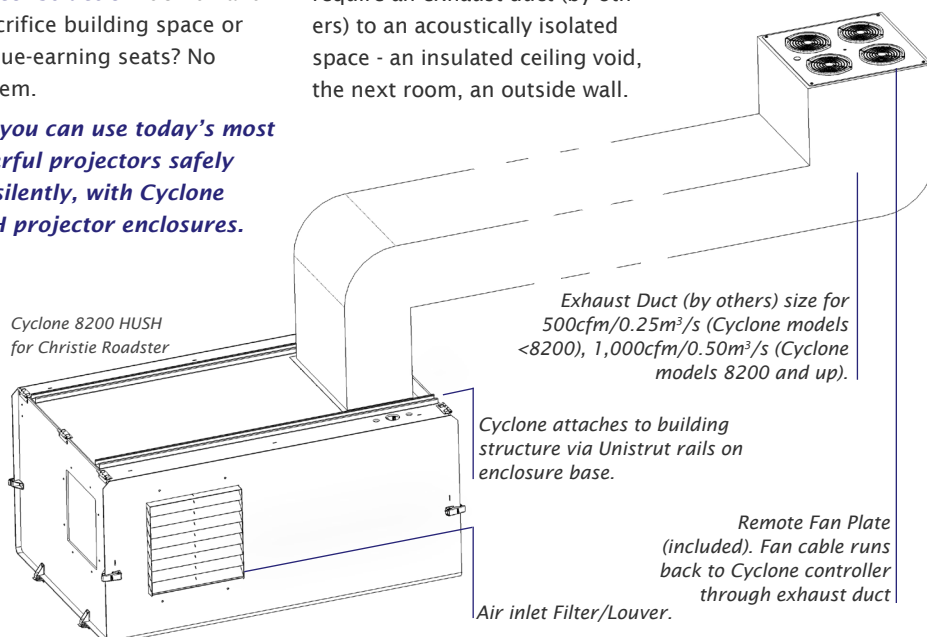
...is about 2dB! Cyclone HUSH
virtually eliminates projector
noise in acoustically sensitive
spaces.

Cyclone HUSH enclosures are
lined with acoustic insulation
and feature airtight
seals to keep projector noise
safely inside.

Cyclone HUSH enclosures
require an exhaust duct (by oth-
ers) to an acoustically isolated
space - an insulated ceiling void,
the next room, an outside wall.

Tempest provides a fan plate to
install at the far end of the duct,
powered by the Cyclone DEC
controller.

Cyclone senses when the projec-
tor lamp is on and when the
internal temperature reaches a
preset level, and runs the fans
to pull cool air through the sys-
tem from the auditorium.



Cyclone 8200 HUSH
for Christie Roadster

Exhaust Duct (by others) size for
500cfm/0.25m³/s (Cyclone models
<8200), 1,000cfm/0.50m³/s (Cyclone
models 8200 and up).

Cyclone attaches to building
structure via Uni strut rails on
enclosure base.

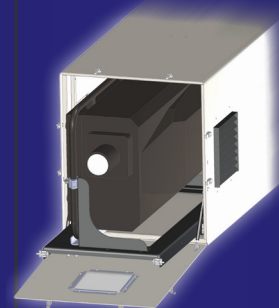
Remote Fan Plate
(included). Fan cable runs
back to Cyclone controller
through exhaust duct

Air inlet Filter/Louver.

Cyclone Portrait

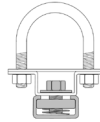


All Cyclone Outdoor
and HUSH enclosures
are available to
special order in
portrait format.

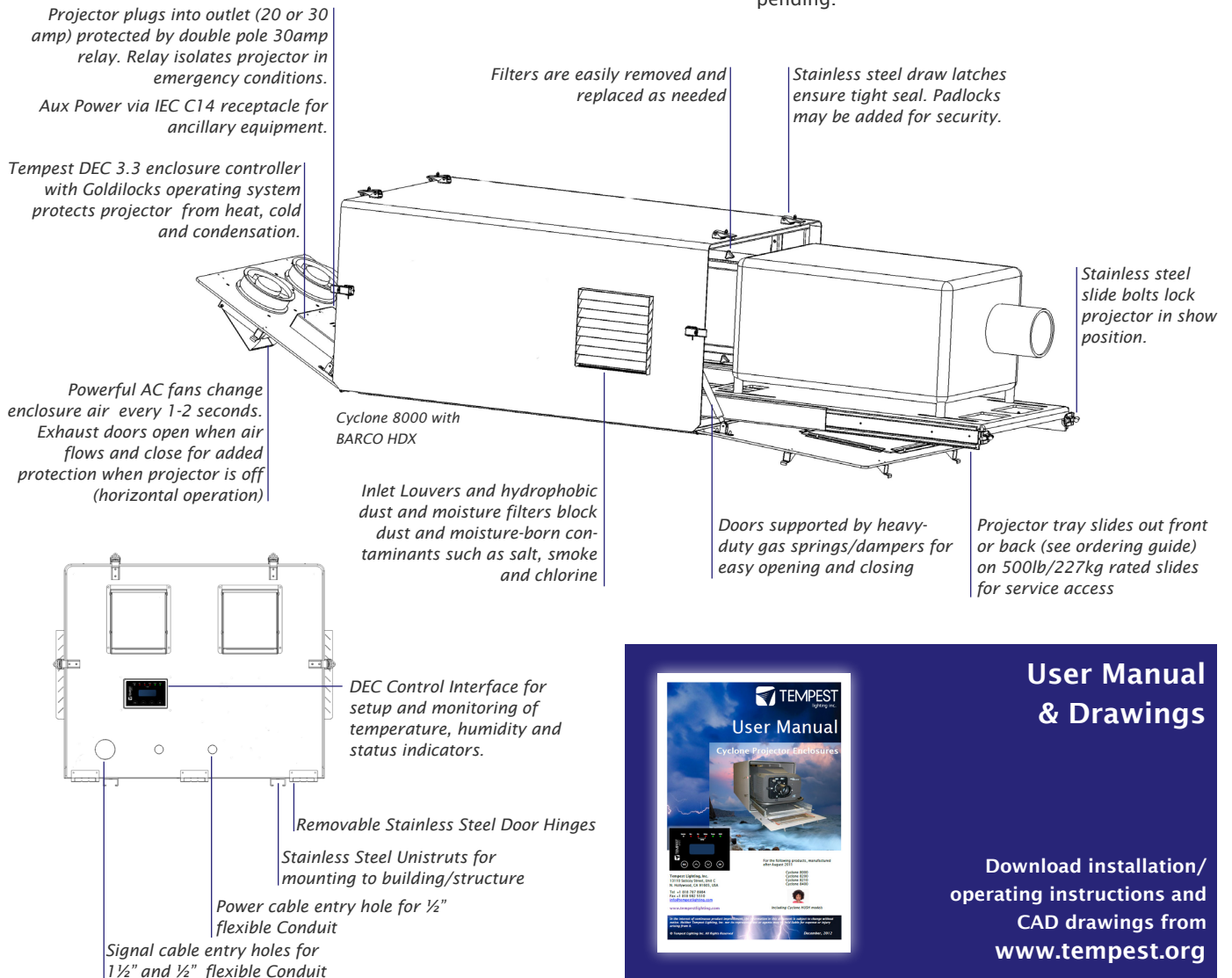


Note that portrait operation
may not be supported by the
projector manufacturer for
all projector models.

Construction	Aluminum, plated and epoxy powder coated for excellent corrosion resistance, stainless steel.
Mounting	Enclosure may be ordered for installation base down or base up. 2 x stainless steel Unistruts on base. Optional Accessories (minimum 4 per enclosure) 4900.MB Stainless Steel Bolt kit: 1/2" bolt, washer, Spring nut (shaded) 4900.MC Stainless Steel pipe clamp kit, for pipes 1.5" (38mm) to 2" (50mm) OD. 4925.MC Stainless Steel pipe clamp kit, for pipes 2" (50mm) to 2.5"/64mm OD. 8000.SK Stacking Kit for any Cyclone Outdoor enclosure
Security	Heavy duty stainless steel latches, may be pad-locked for security.
Access	Projector slides out front or back on 500lb/227kg rated slides
Color	Standard light bronze (Outdoor), White (HUSH). Custom colors to order.
Window	Tempered Optical Glass .125"/3mm
Control	Tempest Lighting DEC3.3 controller with Tempest Goldilocks™ operating system.



Cooling	High-power AC fans changes air every 1-2 seconds when projector lamp is on
Heating	Heating elements maintain minimum operating temperature and prevent condensation (Outdoor)
Cooldown	Fans run for up to 15 minutes after lamp turns off
Protection	Projector power is safely isolated by a 2-pole power relay in the event of overheating.
Power	208VAC or 230VAC, 50/60Hz, 5 amps max (enclosure). Single or split feed wiring for enclosure and projector
Projector Power Outlet	IEC C19 (8000 series), L6-30 (8200 and up). Rewireable plugs included as appropriate.
Aux Power	IEC C14 Receptacle with rewireable plug for ancillary equipment
Approvals	Americas: ETL and cETL listed to UL 50, 508 International: Low Voltage Directive 2006/95/EC, Electromagnetic Compatibility Directive 2004/108/EC, EN 60065:2002, EN 60529:2001-2002, EN 61000-6-3:2007+A1:2011, EN61000-6-1:2007, EN55015:2006+A2:2009 NEMA Type 3R Enclosure (≈IP54)
Patents	Protected by US Patent # 6,352,358. Other patents pending.



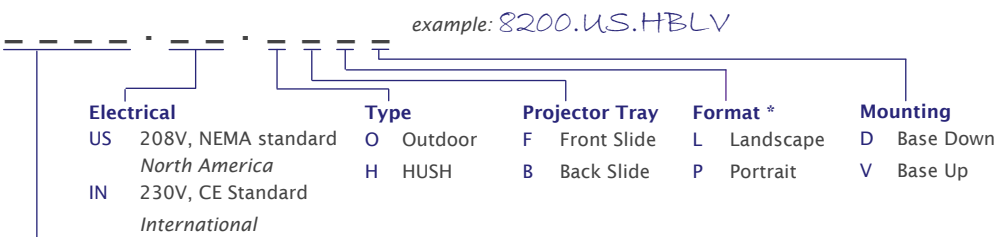


TEMPEST
User Manual
Cyclone Projector Enclosures

User Manual & Drawings

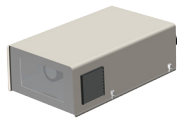
Download installation/
operating instructions and
CAD drawings from
www.tempest.org

Ordering Guide:



Need Something Smaller?

Our Blizzard Series has Outdoor, Indoor and HUSH models for projectors 3,000 to 15,000 ANSI lumens



Model	Description	Dimensions	(lwh)	Weight	Typical Projector Type *
8000	Cyclone 8000	48x28x22"	122x71x56cm	175lb/80kg	BARCO HDX 14-18K
8100	Cyclone 8100	48x34x18"	122x86x46cm	160lb/73kg	Panasonic PT-DS20K, DP Titan Quad
8102	Cyclone 8102	48x34x31"	122x86x78cm	220lb/100kg	TWO Panasonic PT-DS20K
8120	Cyclone 8120	48x34x24"	122x86x61cm	185lb/84kg	Panasonic PT-EX16K
8200	Cyclone 8200	58x34x26"	147x86x66cm	220lb/100kg	Christie Roadster 18-20K
8210	Cyclone 8210	58x36x30"	147x91x76cm	230lb/105kg	BARCO FLM, HDF 22-26K
8400	Cyclone 8400	74x34x33"	188x86x84cm	320lb/145kg	Christie Roadie 35K
8450	Cyclone 8450	74x34x39"	188x86x99cm	350lb/159kg	Christie D4K35, CP2210/20
840B	Ballast Enclosure**	31x24x26"	79x61x66cm	65lb/30kg	Christie 35K Ballast
8500	Cyclone 8500	65x38x36"	165x96x91cm	330lb/150kg	BARCO HDQ 40K
8600	Cyclone 8600	74x34x39"	188x86x99cm	350lb/159kg	Sony SRX-R320

* For projectors not shown here, please contact factory
** 840B Ballast Enclosure for Christie 305K projectors includes 6'/2m DC pigtails, so DC cables are not required

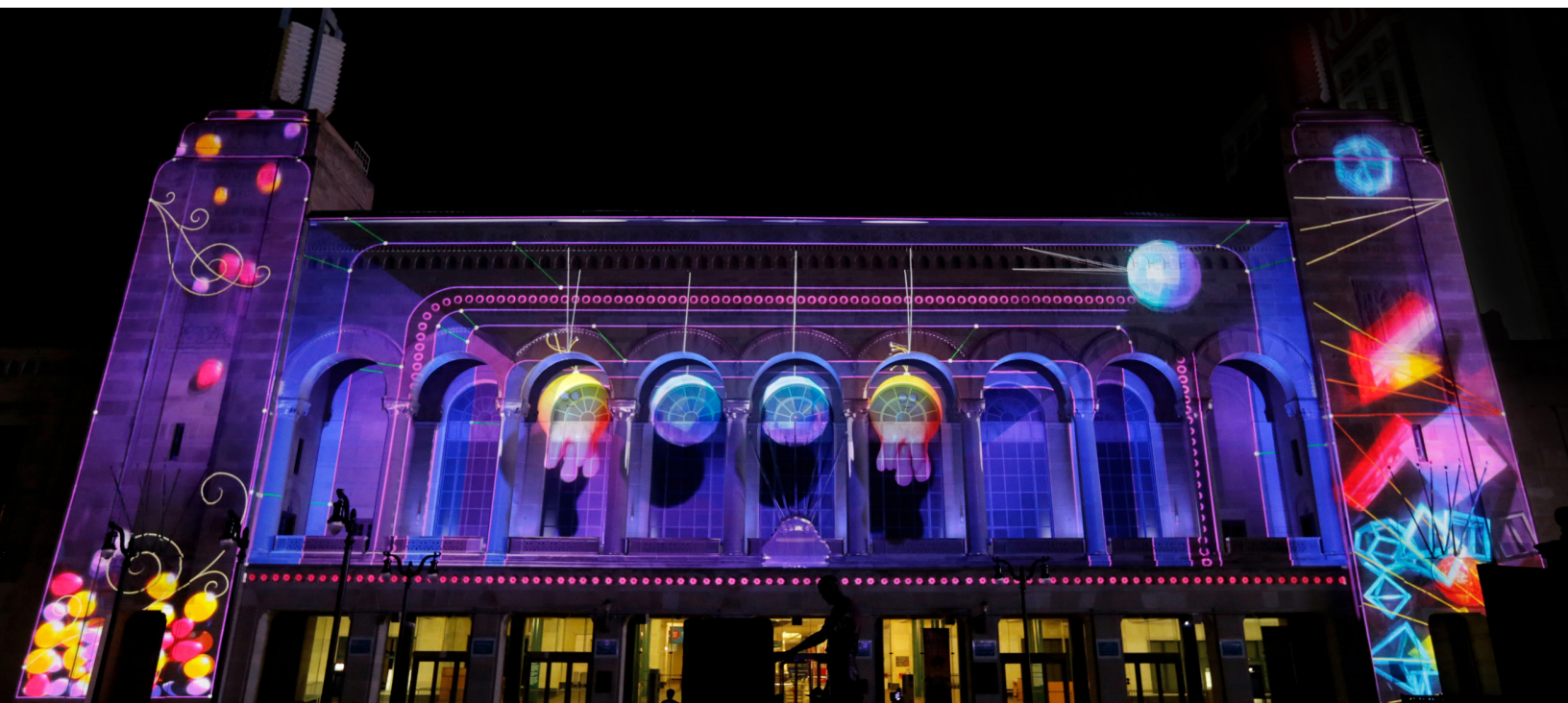
Options and Accessories

2000.190	JESE RDM-TRI PC Interface and GetSet Software
4900.MB	Stainless Steel Bolt Kit (4 per enclosure model <8400. 6 for models 8400 and up)
4900.MC	Stainless Steel Pipe Clamp 2"/50mm (4 per enclosure model <8400. 6 for models 8400 and up)
4925.MC	Stainless Steel Pipe Clamp 2.5"/63mm (4 per enclosure model <8400. 6 for models 8400 and up)
8000.ECK	Dual Exterior Cowl Kit for Cyclone HUSH 8000 Series
8200.ECK	Quad Exterior Cowl Kit for Cyclone HUSH 8200 and up
8000.TI	Thermal Insulation Kit for all Outdoor Cyclone models
8000.SK	Cyclone Stacking Kit for all Outdoor Cyclone models
8000.TK	Cyclovator Tilt Kit for 8000/8100 series (overall length 48"/122cm)
8200.TK	Cyclovator Tilt Kit for 8200 series (overall length 58"/147cm)
8400.TK	Cyclovator Tilt Kit for 8400 series (overall length 74"/188cm)

Replacement Filters

6500.799.HF	Spare 11"/28cm Hydrophobic Filter (Cyclone 8000, 8100 series). 2 per enclosure.
8000.799.HF	Spare 15.5"/39cm Hydrophobic Filter (Cyclone 8102, 8200 and up). 2 per enclosure.

Duality – Atlantic City, NJ
Design and content by the
Moment Factory, Montreal.
12 Christie Roadster
projectors in Cyclone
8200 enclosures survived
Hurricane Sandy shortly
after installation!
Reproduced courtesy of the
Moment Factory.



Shipping Weights and Dimensions



Cyclone enclosures and Cyclovator Tilt Kits are shipped in high quality wood crates treated and certified to international export standards.

Cyclone Enclosures


8000	54x37x32", weight 330lb	137x94x66cm, 150kg
8100	54x42x26", weight 330lb	137x107x66cm, 150kg
8102	54x40x37", weight 400lb	137x102x99cm, 182kg
8120	54x42x28", weight 350lb	137x107x71cm, 159kg
8200	64x41x36", weight 390lb	163x104x92cm, 177kg
8210	62x43x35", weight 420lb	157x109x89cm, 205kg
8400	85x46x41", weight 450lb	216x117x104cm, 205kg
8450	85x46x46", weight 450lb	216x117x117cm, 205kg
840B*	39x39x28", weight 120lb	100x100x71cm, 191kg
8500	72x44x42", weight 450lb	183x112x107cm, 205kg
8600	85x46x46", weight 450lb	216x117x117cm, 205kg

** 840B is packed in a palletized carton*

Cyclovator Tilt Kits

8000.TK	62x28x29", weight 200lbs	158x71x74cm, 91kg
8200.TK	72x28x29", weight 230lbs	183x71x74cm, 105kg
8400.TK	84x28x29", weight 310lbs	213x71x74cm, 141kg

All *Schedule B Export Code: 8536.30.0000*

 *Made in the USA*

©Tempest Lighting, Inc., December, 2013

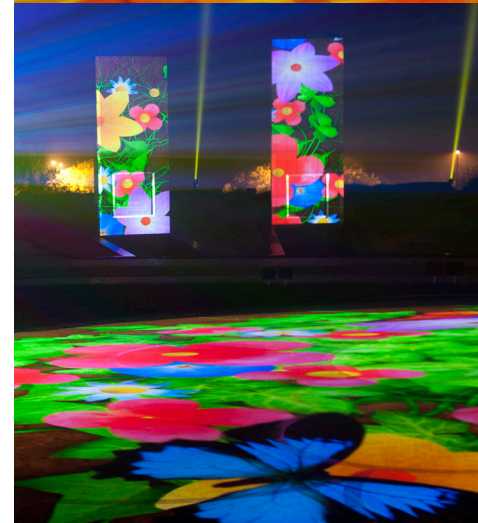
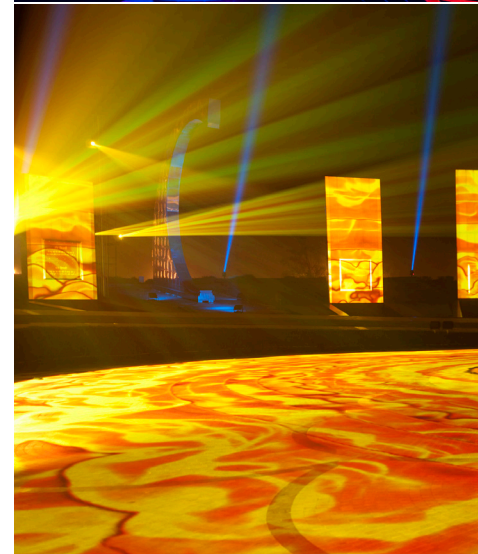
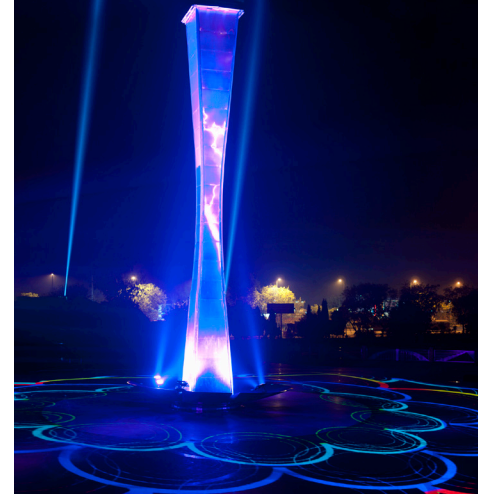
In the interest of continuous product improvement, specifications are subject to change without notice

Tempest Lighting, Inc.,

13110 Saticoy Street, Unit C, North Hollywood, CA 91605, USA

www.tempest.org info@tempestlighting.com

t: +1 818 787 8984 f: +1 818 982 5582



 **TEMPEST**