

DOOR/WINDOW SENSOR

QUICK INSTALLATION GUIDE
v1.3

TRADEMARKS

Zipato and the Zipato logo are registered Trademarks. All other product names mentioned herein may be trademarks or registered trademarks of their respective companies.

NOTICE

Although Zipato has attempted to ensure the accuracy of the content of this manual, it is possible that this document may contain technical inaccuracies, typographical, or other errors. Zipato assumes no liability for any error in this publication, and for damages, whether direct, indirect, incidental, and consequential or otherwise, that may result from such error, including, but not limited to loss of data or profits. Zipato provides this publication "as is" without warranty of any kind, either express or implied, including, but not limited to implied warranties of merchantability or fitness for a particular purpose. The published information in the manual is subject to change without notice. Zipato reserves the right to make changes in the product design, layout, and driver revisions without notification to its users. This version of the Installation guide supersedes all previous versions.

ELECTROMAGNETIC COMPATIBILITY

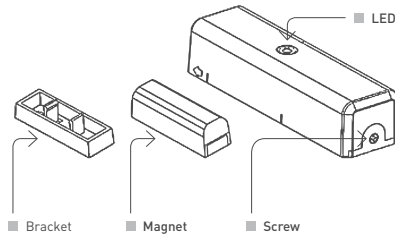
In proper state and when operated properly, the product complies with all the requirements in respect of interference radiation according to EN 301 489-17, EN 301 489-1 and EN 300 328. The connections conducting HF signals must neither be manipulated nor damaged.

TAKE CARE OF YOUR SAFETY

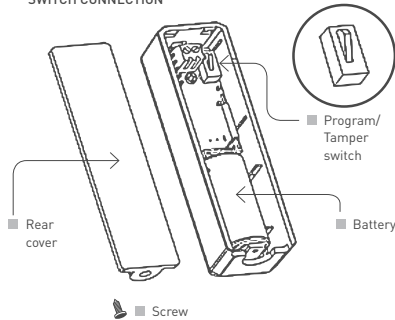
Display extreme caution when using ladders or steps, please follow manufacturer's instructions. Be careful when using hand and power tools and follow the manufacturer's guidelines when using them. Take care that the correct tools are used. Wear goggles or protective clothing where required.

PRODUCT DESCRIPTION AND SPECIFICATION

FOR INDOOR USE ONLY



RESERVED FOR EXTERNAL SWITCH CONNECTION



SPECIFICATION

TECHNICAL SPECS

PROTOCOL	Z-Wave™ (ZM3102N)
MAXIMUM LOAD	1.8 HP
OPERATING TEMPERATURE	-15°C - 60°C [5°F - 140°F]
BATTERY	Panasonic CR123A * 1PC

PACKAGE CONTENT

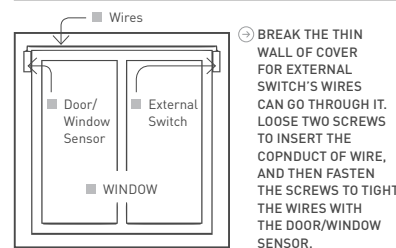
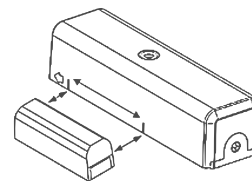
1PC	ZD 2012 sensor
1PC	Bracket for Contact Magnet
1PC	Magnet
2PCS	Adhesive tape for Magnet / sensor
1PC	CR123A Lithium Battery
4PCS	Screws for bracket/ sensor
1PC	Installation & Operation manual

INSTALLATION

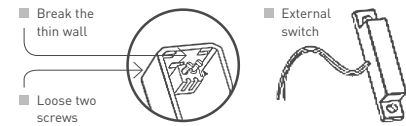
Notice: If you are installing the entire Z-Wave™ system for the first time, please refer to the installation guide of Z-Wave™ Interface Controller before installing Vs-zd2102.

- 1 | Unscrew the screw fastening the rear cover.
- 2 | Slide the rear cover down.
- 3 | Using the screws or adhesive tape to affix the rear cover on the frame along the opening edge of door / window.
- 4 | Insert a CR123A battery into the battery compartment and LED will start to flash slowly, which means the sensor has not yet been "inclusion".
- 5 | For "Inclusion" in (adding to) a network: Put the Z-Wave™ Interface Controller into "inclusion" mode, and following its instruction to add the Vs-zd2102 to your controller. To get in the "inclusion" mode, the distance between sensor and controller is suggested to be in one meter. Press the program switch of Vs-zd2102 for 1 second at least. The LED on the Vs-zd2102 should go solid, if not, please try again. For "Exclusion" (from removing from) a network: Put the Z-Wave™ Interface Controller into "exclusion" mode, and following its instruction to delete the Vs-zd2102 from your controller. Press the program switch of Vs-zd2102 for 1 second at least to be excluded. For "Association": removing the cover of the Vs-zd2102 to get into the "Awake" mode, then put the Z-Wave™ Interface Controller into "Association", and following its instruction to associate the Vs-zd2102 with other device. Close the cover back after "association" done, afterward the Vs-zd2102 will get into "Sleep" mode for power saving. Support one association group (5 nodes). "Awake" mode: it is to leave the "Sleep" mode by removing the cover of Vs-zd2102, to allow the Z-Wave™ Interface Controller to do "Inclusion", "Exclusion", "Association" and to reply and receive the commands from controller.
- 6 | Slide back the rear cover and screw fastening with the front cover, the LED should go off.
- 7 | Fix the Magnet by using the adhesive tape or fixing screws, locate the Magnet close to the Vs-zd2102 sensor the distance between these two devices should be in 1.9cm.
- 8 | External Switch: If your window needs two sensors for fully monitoring. You could use an external switch to connect with the Vs-zd2102 for extending detection. The Vs-zd2102 has 2 normally closed contact terminals. These can be used for additional external switch wired contacts. The external switch will send an alarm report (type:01,level:11) by opening the window/door.

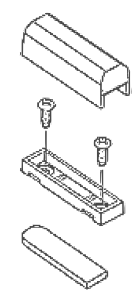
THE MAGNET SHALL BE FIXED TO CLOSE TO THE SPECIFIC AREA, AND THE DISTANCE FROM SENSOR SHALL NOT BE OVER 1.9CM



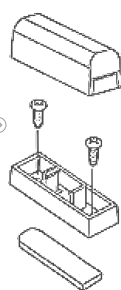
- BREAK THE THIN WALL OF COVER FOR EXTERNAL SWITCH'S WIRES CAN GO THROUGH IT. LOOSE TWO SCREWS TO INSERT THE COPDUCT OF WIRE, AND THEN FASTEN THE SCREWS TO TIGHT THE WIRES WITH THE DOOR/WINDOW SENSOR.



FIXED WITHOUT BRACKET



FIXED WITH BRACKET



OPERATION

- 1 | Opening the door/window to separate the magnet from the sensor will send the status of "ON"(Basic Set,Value:0xFF) to any associated nodes, and the LED will flash once.
- 2 | Closing the door/window to align the magnet with the sensor will send the status of "OFF"(Basic Set,Value:0x00) to any associated nodes, and the LED will flash once.
- 3 | Normal operation, the LED will not light.
- 4 | The Vs-zd2102 sensor equipped with tamper switch. If the cover of sensor is removed, the door sensor will send an alarm report (type:01, level:11) to the Z-Wave™ Interface Controller, and the LED will go solid. Before replacing the cover, the sensor is under "Awake" mode.

TECHNICAL SUPPORT

Having trouble installing your new product?

Zipato's website contains the latest user documentation and software updates for Zipato products and services.

www.zipato.com

CONTACT SUPPORT

E-MAIL: support@zipato.com
(Mon-Fri) 9.00am-05.00pm (CET)

MODELS AND FREQUENCIES

➤ MODELS	
EUROPEAN UNION - EU version	vs-zd2102.eu
UNITED STATES - US version	vs-zd2102.us
RUSSIA - RU version	vs-zd2102.ru
ISRAEL - IS version	vs-zd2102.is
AUSTRALIA - AU version	vs-zd2102.au
INDIA - IN version	vs-zd2102.in
➤ FREQUENCIES	
EUROPEAN UNION - EU	868.42 MHz
UNITED STATES - US	908.42MHz
RUSSIA - RU	869.02MHz
ISRAEL - IS	916.02MHz
AUSTRALIA - AU	921.42MHz
INDIA - IN	865.20MHz

LIMITED PRODUCT WARRANTY

➤ GENERAL TERMS
Nothing in this Limited Product Warranty affects your statutory rights as a consumer.

The Limited Product Warranty set forth below is given by Tri plus grupa d.o.o. (Europe) [herein referred to as "ZIPATO"]. This Limited Product Warranty is only effective upon presentation of the proof of purchase. Upon further request by ZIPATO, this warranty card has to be presented, too.

EXCEPT AS EXPRESSLY SET FORTH IN THIS LIMITED WARRANTY, ZIPATO MAKES NO OTHER WARRANTIES, EXPRESS OR IMPLIED, INCLUDING ANY IMPLIED WARRANTIES OF MERCHANTABILITY AND FITNESS FOR A PARTICULAR PURPOSE. ZIPATO EXPRESSLY DISCLAIMS ALL WARRANTIES NOT STATED IN THIS LIMITED WARRANTY. ANY IMPLIED WARRANTIES THAT MAY BE IMPOSED BY LAW ARE LIMITED IN DURATION TO THE LIMITED WARRANTY PERIOD. TO THE EXTENT ALLOWED BY LOCAL LAW, THE REMEDIES IN THIS WARRANTY STATEMENT ARE CUSTOMER'S SOLE AND EXCLUSIVE REMEDIES AGAINST ZIPATO. THEY DO NOT, HOWEVER, AFFECT OR RESTRICT THE RIGHTS YOU HAVE AGAINST THE BUSINESS YOU BOUGHT A ZIPATO PRODUCT FROM. IN NO EVENT WILL ZIPATO BE LIABLE FOR LOSS OF DATA OR FOR INDIRECT, SPECIAL, INCIDENTAL, CONSEQUENTIAL (INCLUDING LOST PROFIT OR DATA), OR OTHER DAMAGE, WHETHER BASED IN CONTRACT, TORT, OR OTHERWISE. HOWEVER, NOTHING IN THIS AGREEMENT LIMITS ZIPATO'S LIABILITY TO YOU (I) IN THE EVENT OF DEATH OR PERSONAL INJURY TO THE EXTENT RESULTING FROM ZIPATO'S NEGLIGENCE, OR (II) TO THE EXTENT RESULTING FROM ANY FRAUDULENT MISREPRESENTATION ON THE PART OF ZIPATO, OR (III) TO THE EXTENT ARISING UNDER PART 1 OF THE CONSUMER PROTECTION ACT 1987 OF THE UNITED KINGDOM. SOME STATES OR COUNTRIES DO NOT ALLOW; (1) A DISCLAIMER OF IMPLIED WARRANTIES; (2) A LIMITATION ON HOW LONG AN IMPLIED WARRANTY LASTS OR THE EXCLUSION; OR (3) LIMITATION OF INCIDENTAL OR CONSEQUENTIAL DAMAGES FOR CONSUMER PRODUCTS. IN SUCH STATES OR COUNTRIES, SOME EXCLUSIONS OR LIMITATIONS OF THIS LIMITED WARRANTY MAY NOT APPLY TO YOU. THIS LIMITED WARRANTY GIVES YOU SPECIFIC LEGAL RIGHTS. YOU MAY ALSO HAVE OTHER RIGHTS THAT MAY VARY FROM STATE TO STATE OR FROM COUNTRY TO COUNTRY. YOU ARE ADVISED TO CONSULT APPLICABLE STATE OR COUNTRY LAWS FOR A FULL DETERMINATION OF YOUR RIGHTS.

This Limited Product Warranty applies to ZIPATO branded hardware products (collectively referred to as "ZIPATO Hardware Products") sold by ZIPATO (Europe), its European subsidiaries, affiliates, authorized resellers, or country distributors (collectively referred to as "ZIPATO Resellers") with this Limited Product Warranty.

The term "ZIPATO Hardware Product" is limited to the hardware

components and all its internal components including firmware. The term "ZIPATO Hardware Product" DOES NOT include any software applications or programs.

➤ GEOGRAPHICAL SCOPE OF THE LIMITED PRODUCT WARRANTY
This Limited Product Warranty is applicable to Hardware Products sold by Zipato Resellers in all countries listed at the beginning of this document under the heading "Countries in which this ZIPATO Limited Product Warranty applies". The Limited Product Warranty will be honored in any country where ZIPATO or its authorized service providers offer warranty service subject to the terms and conditions set forth in this Limited Product Warranty. However, warranty service availability and response times may vary from country to country and may also be subject to registration requirements.

➤ LIMITATION OF PRODUCT WARRANTY
ZIPATO warrants that the products described below under normal use are free from material defects in materials and workmanship during the Limited Product Warranty Period set forth below ("Limited Product Warranty Period"). If the product is used and serviced in accordance with the user manual and other documentation provided to the purchaser at the time of purchase (or as amended from time to time).

ZIPATO does not warrant that the products will operate uninterrupted or error-free or that all deficiencies, errors, defects or non-conformities will be corrected.

This warranty shall not apply to problems resulting from: [a] unauthorized alterations or attachments; [b] negligence, abuse or misuse, including failure to operate the product in accordance with specifications or interface requirements; [c] improper handling; [d] failure of goods or services not obtained from ZIPATO or not subject to a then-effective ZIPATO warranty or maintenance agreement; [e] improper use or storage; or [f] fire, water, acts of God or other catastrophic events. This warranty shall also not apply to any particular product if any ZIPATO serial number has been removed or defaced in any way.

ZIPATO IS NOT RESPONSIBLE FOR DAMAGE THAT OCCURS AS A RESULT OF YOUR FAILURE TO FOLLOW THE INSTRUCTIONS FOR THE ZIPATO HARDWARE PRODUCT.

➤ LIMITED PRODUCT WARRANTY PERIOD
The Limited Product Warranty Period starts on the date of purchase from ZIPATO. Your dated sales or delivery receipt, showing the date of purchase of the product, is your proof of the purchase date. You may be required to provide proof of purchase as a condition of receiving warranty service. You are entitled to warranty service according to the terms and conditions of this document if a repair to your ZIPATO branded hardware is required within the Limited Product Warranty Period. [Other than in respect of products for domestic use [in particular those listed in the first and last boxes in the table below], this Limited Product Warranty extends only to the original end user purchaser of this ZIPATO Hardware Product and is not transferable to anyone who obtains ownership of the ZIPATO Hardware Product from the original end-user purchaser.

➤ PRODUCT WARRANTY PERIOD TABLE	
PRODUCT TYPE	Door/Window Sensor
PRODUCT WARRANTY PERIOD	One (1) year

IMPORTANT
The content of "Product Type" listed above is subject to change; please refer to the www.zipato.com for latest update.

➤ PERFORMANCE OF THE LIMITED PRODUCT WARRANTY
If a product defect occurs, ZIPATO's sole obligation shall be to repair or replace any defective Zipato Hardware Product free of charge provided it is returned to an Authorized ZIPATO Service

Centre during the Limited Warranty Period. Such repair or replacement will be rendered by ZIPATO at an Authorized ZIPATO Service Centre. All component parts or hardware products that are replaced under this Limited Product Warranty become the property of ZIPATO. The replacement part or product takes on the remaining Limited Warranty Period of the replaced part or product. The replacement product need not be new or of an identical make, model or part; ZIPATO may in its discretion replace the defective product [or any part thereof] with any reconditioned equivalent [or superior] product in all material respects to the defective product.

WARRANTOR
Tri plus grupa d.o.o.
Banjaveciva 11
10 000 Zagreb
CROATIA

TEL +385 (0)1 4004 404
FAX +385 (0)1 4004 405

DECLARATION OF CONFORMITY

The Manufacturer Tri plus grupa d.o.o. hereby declares that the product:
Zipabox Smart home controller 1



In accordance with the following Directives: 2006/95/EC The Low Voltage Directive, 89/336/EEC The Electromagnetic Compatibility Directive and 1999/5/EC R&TTE Directive is in conformity with the e applicable requirements of the following documents:

EN 61326 EN 61000-3-3 EN 61000-4-4 EN 61000-4-11
IEC/EN 55011 EN 61000-6-2 EN 61000-4-5 EN 301 489-1-3
EN 300 220-2 EN 61000-4-2 EN 61000-4-6 AS/NZS/IEC 60335-2-97
EN 61000-3-2 EN 61000-4-3 EN 61000-4-8 EN 60335-1

I hereby declare that the equipment named above has been designed to comply with the relevant sections of the above referenced specifications. The unit complies with all applicable Essential Requirements of the Directives.

Person responsible for this declaration:
Dean Janacek, Certification Manager
01.09.2012

Changes or modifications not expressly approved Tri plus grupa d.o.o. for compliance could void the user's authority to operate the equipment.



THIS DEVICE COMPLIES WITH PART 15 OF THE FCC RULES.
Operation is subject to the following two conditions:
1 | this device may not cause harmful interference, and
2 | this device must accept any interference received, including interference that may cause undesired operation.

Le présent appareil est conforme aux CNR d'Industrie Canada applicables aux appareils radio exempts de licence. L'exploitation est autorisée aux deux conditions suivantes :
1 | l'appareil ne doit pas produire de brouillage, et
2 | l'utilisateur de l'appareil doit accepter tout brouillage radioélectrique subi, même si le brouillage est susceptible d'en compromettre le fonctionnement.

NOTE: Changes or modifications not expressly approved by Zipato for compliance could void the user's authority to operate the equipment. This equipment has been tested and found to comply with the limits for a Class B digital device, pursuant to Part 15 of the FCC

Rules. These limits are designed to provide reasonable protection against harmful interference in a residential installation. This equipment generates, uses and can radiate radio frequency energy and, if not installed and used in accordance with the instructions, may cause harmful interference to radio communications. However, there is no guarantee that interference will not occur in a particular installation. If this equipment does cause harmful interference to radio or television reception, which can be determined by turning the equipment off and on, the user is encouraged to try to correct the interference by one or more of the following measures:

- Reorient or relocate the receiving antenna.
- Increase the separation between the equipment and receiver.
- Connect the equipment into an outlet on a circuit different from that to which the receiver is connected.
- Consult the dealer or an experienced radio/TV technician for help.

➤ DISPOSING AND RECYCLING YOUR PRODUCT



This symbol on the product or packaging means that according to local laws and regulations needs to be disposed of separately from household waste and sent to recycling because it contains electronic components and a battery. Once this product has reached the end of its life, please take it to a collection point (recycle facilities) designated by your local authorities, some will accept your product for free or simply drop it off at your Zipato re-seller store. By recycling the product and its packaging in this manner you help to conserve the environment and protect human health. At Zipato, we understand and are committed to reducing any impact our operations and products may have on the environment. To minimize this impact Zipato designs and builds its products to be as environmentally friendly as possible, by using recyclable, low toxic materials in both products and packaging.

➤ COPYRIGHT
© 2012 Tri plus grupa d.o.o. All Rights Reserved.

No part of this manual may be reproduced or transmitted in any form without the expressed, written permission of Tri plus grupa d.o.o.