

USER MANUAL



DRIP COFFEE MAKER

SY•DC15

Welcome

Thank you for purchasing the new Drip Coffee Maker SY-DC15. In order to fully benefit from this product, please read these instructions carefully. Store the user manual in a safe place for future reference.

Important Safeguards:

The following safety precautions should always be followed when using domestic electrical products to reduce the risk of electric shock, personal injury or fire. It is important to keep these instructions for future reference after you have read and understood them and before attempting to use the product.



This symbol warns you of Dangers to your health and Indicates possible injury risks



This symbols warn you of Hot surfaces.

CAUTION

This symbol refers to possible hazards to the machine or other objects

When using electrical appliances, basic safety precautions should always be followed to reduce the risk of fire, electrical shock and/or personal injury.

Danger

CAUTION Never immerse the appliance in water or any other liquid.

Warning

- Before inserting the mains plug into the socket, check that the mains supply voltage and current rating corresponds with the power supply details shown on the model label of the appliance.
- The product should only be placed on horizontal flat surfaces, please do not place the product on inclined or unstable surfaces in order to prevent any injuries.
- ⚠ During usage, always keep the unit away from the reach of children in order to avoid injury as the coffee maker operates at high temperatures.
- ⚠ After use, some parts of the coffee maker will be extremely hot. Use the designated handles and knobs in order to prevent burning.
- This product should only be used to make coffee with water. Please do not insert any other liquid such as milk.
- Do not insert the mains plug into the socket if the appliance has no water.

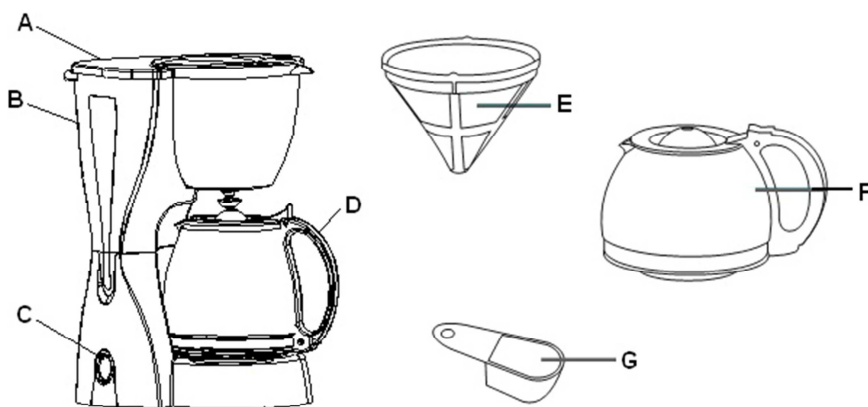
CAUTION When using the appliance, always pay attention to the water level marking on the interior of the coffee maker. Do not operate the appliance below the minimum level and never exceed the maximum level.

- It is advised to decalcify the appliance at least once a month. Any regular de-scaling agent may be used, provided that the relevant instructions are observed. Turn on the appliance to clean up the scale and run the maximum quantity of water through the machine twice without adding coffee.
- ⚠ This appliance is not intended for use by persons (including children) with reduced physical, sensory or mental capabilities, or lack of experience and knowledge, unless they have been given supervision or instructions concerning use of the appliance by a person responsible for their safety.
- Do not attempt to remove any parts of the housing nor insert any metal objects into the interior of the appliance.
- To prevent damage to the power cord, always keep it away from sharp edges or corners.
- ⚠ Do not place the power cord over or near hot surfaces.
- If the supply cord is damaged, contact Sytech Service Centre.

CAUTION DO NOT operate the appliance if:

- The appliance or the power cord are damaged
- The appliance has been dropped.
- The crystal jug is broken or shows any signs of cracks.
- Always remove the plug from the wall socket:
 - After use
 - In case of any malfunction
 - Before cleaning

Description



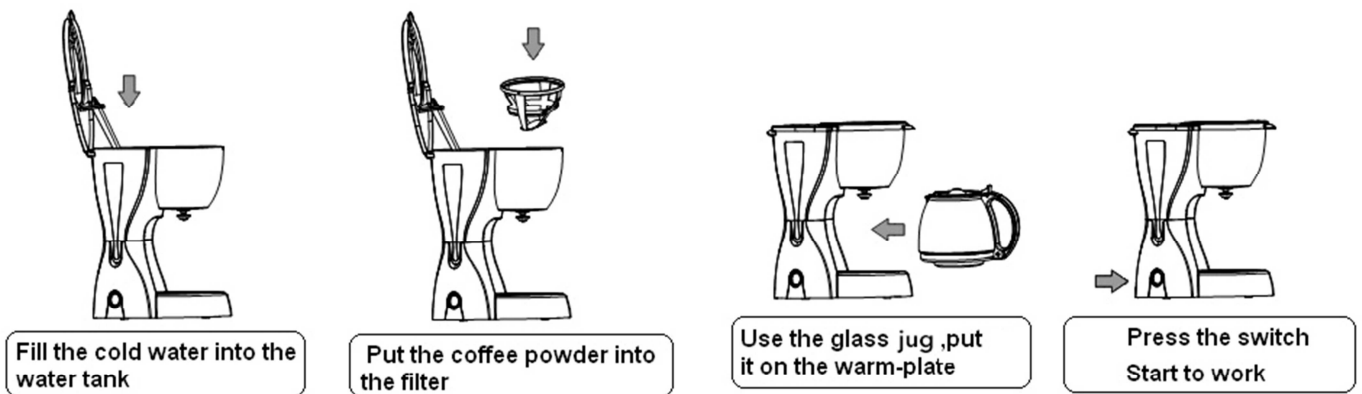
- A. Filter housing lid
- B. Water tank
- C. Switch
- D. Jug handle
- E. Filter
- F. Glass Jug
- G. Spoon

Preparing for use

1. Insert the plug into the socket.
2. Prior to initial use, clean it by going through the whole cycle. Fill water to the maximum level, then turn on the unit and the water will come out. Once finished, pour away all the water and the unit is ready to use.
3. Fill the jug with cold water and open the tank cover. Pour the water from the jug into the water tank and close the tank cover.
4. Place the jug back into its original position.
5. Start the brewing process by pressing the On/Off switch.

Making Coffee

1. Fill the water tank with the desired amount of cold water.
2. Ensure the water level must not exceed the max level mark inside the water tank.
3. The water level display in the tank indicates the number of cups which can be prepared with the amount of water inserted.
4. Open the funnel and insert the desired amount of ground coffee into the permanent filter.
5. Once the funnel has been closed, ensure that the jug is placed properly in its position.
6. Switch on the appliance and the pilot lamp illuminates to indicate the unit is functioning.
7. After the brewing process, turn off the unit and let the unit cool down before unplugging the cord. Always hold the jug by its handle to avoid burning. Once the unit has cooled down, the detachable parts can be removed and cleaned.



Cleaning and Maintenance

- Unplug the appliance
- Clean the exterior of the appliance with a moist cloth.
- Remove all the detachable parts and wash them with some washing-up liquid. .
- The jug can be cleaned with warm water, some washing-up liquid and a soft brush. Do not clean the jug in a dishwasher.

Descaling

In order to prolong the lifetime of your coffee maker you must descale the unit over a period of time. Frequency will depend on how hard the water is in your area, and how often you use the coffee maker. If you use your coffee maker once or twice a day, the following guidelines for descaling should be used:

- Soft water, every 6 months.
- Hard water, every 6-8 weeks.

If for any reason the brewing time becomes longer than usual, it is a sign that the appliance needs to be descaled.

Specifications

- Drip Coffee
- 10-12 cups capacity
- Non-stick heating plate
- Permanent Filter
- Illuminated On/Off Switch
- Water level indicator
- Heat-resistant glass jug
- Power: 1000W
- Power: 220-240V 50Hz

Declaration of Conformity

Manufacturer Name: Satyatrade S. L.
Address: Pol.Ind.La Raya. C/ Guadalquivir, 2.
Camarma de Esteruelas, 28816 Madrid
Tel: 902 430 967
Fax: 91 8864285
NIF: B83254763
Manufacturing country: China
Description: Drip Coffee Maker
Sytech® SY-DC15 complies with the following directives:

CE Standard: Directive 2004/108/CE

LVD Standard: Low Voltage Directive 2006/95/EC

ROHS Standard: 2011/65/EU Restriction of Hazardous Substances

Signed: Ajeet Nebhwani Utamchandani
Sole Administrator

