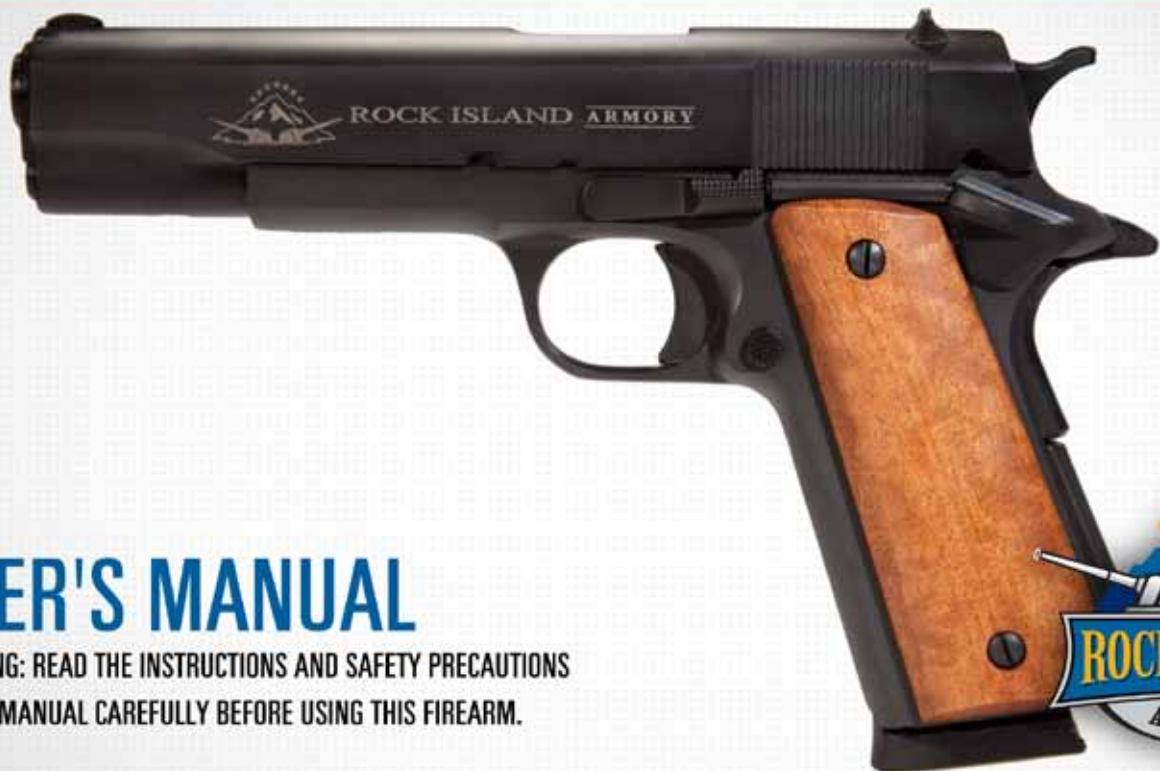


# 1911 STANDARD GI SERIES

CAL 45 ACP, 38 SUPER, 9MM



## USER'S MANUAL

WARNING: READ THE INSTRUCTIONS AND SAFETY PRECAUTIONS  
IN THIS MANUAL CAREFULLY BEFORE USING THIS FIREARM.



1911 STANDARD GI



1911 POLISHED NICKEL



1911 TWO TONE



1911 MATTE NICKEL



1911 MIDSIZE



1911 COMPACT



SCAN TO SEE VIDEO OF THE  
 1911 STANDARD GI 45 ACP  
 IN ACTION

# 1911 STANDARD GI

Congratulations on the purchase of your **RIA 1911-A1-GI PISTOL (FS, MS, or CS)**. As a responsible firearm owner, you must read this **USER'S MANUAL** thoroughly and become familiar with it before you handle your new firearm.

This **USER'S MANUAL** is designed to assist you in learning the proper use and care of your handgun. After reading this manual, examine your handgun carefully and make sure you understand all features associated with it. This includes knowing it's basic parts, how the safety features operate, how to open and close the action, and how to safely load and unload ammunition. Remember that improper use and handling of this handgun is dangerous, may void the warranty, and could cause severe injury or death.

The **RIA 1911-A1-GI PISTOL** is as well made as modern technology allows and will give you a lifetime of reliable service, security, and pride of ownership. Use it properly and take good care of it, as per the instructions given in this **USER'S MANUAL** and do not hesitate to ask pertinent questions from the manufacturer or from competent gunsmiths.

This **USER'S MANUAL** should always be kept available for reference and should accompany the firearm if transferred to another party.

## LEAD POISONING WARNING

LEAD POISONING: DISCHARGING FIREARMS IN POORLY VENTILATED AREAS, CLEANING FIREARMS, OR HANDLING AMMUNITION MAY RESULT IN EXPOSURE TO LEAD AND OTHER SUBSTANCES KNOWN TO CAUSE BIRTH DEFECTS, REPRODUCTIVE HARM, AND OTHER SERIOUS PHYSICAL INJURY. HAVE ADEQUATE VENTILATION AT ALL TIMES. WASH YOUR HANDS THOROUGHLY AFTER EXPOSURE.

**Health & Safety**

- 5.....Statement of Liability
- 5.....State-By-State Warnings
- 6.....Safety Precautions

**Maintenance**

- 37.... Storage & Transportation
- 38.... Servicing & Repair/  
Ticket System
- 39.... Warranty

**About the Firearm****Standard FS GI (.45acp .38super, .9mm)**

- 7.... Tech Specs
- 8.....Diagram
- 9.... Parts List
- 10.... General Info
  - Basic Model Description
  - Safety Features
  - Special Features
- 11.... Operating Instructions
- 12.... Assembly/Disassembly
- 14.... Ammo Selection/Use
- 15.... Care & Maintenance

**About the Firearm****Midsize GI (.45acp)**

- 17.... Tech Specs
- 18.....Diagram
- 19.... Parts List
- 20.... General Info
  - Basic Model Description
  - Safety Features
  - Special Features
- 21.... Operating Instructions
- 22.... Assembly/Disassembly
- 24.... Ammo Selection/Use
- 25.... Care & Maintenance

**About the Firearm****Compact (.9mm)**

- 27.... Tech Specs
- 28.....Diagram
- 29.... Parts List
- 30.... General Info
  - Basic Model Description
  - Safety Features
  - Special Features
- 31.... Operating Instructions
- 32.... Assembly/Disassembly
- 34.... Ammo Selection/Use
- 35.... Care & Maintenance

**Statement of Liability**

This firearm is classified as a firearm or dangerous weapon. It is expressly understood that we assume no liability for its resale or unsafe handling under local laws and regulations. Arms Corporation of the Philippines assumes no responsibility for physical injury or property damage resulting from either intentional or accidental discharge, or for the function of the gun subjected to influence beyond their control. Arms Corporation of the Philippines will honor no claims which may result from careless handling, unauthorized adjustments, defective or improper ammunition, corrosion or neglect. Examine your gun carefully at the time of purchase. It should be forwarded immediately to the factory or its sales agent if any adjustment of any kind of required.

**CALIFORNIA STATE WARNING**

CHILDREN ARE ATTRACTED TO AND CAN OPERATE FIREARMS THAT CAN CAUSE SEVERE INJURIES OR DEATH. PREVENT CHILD ACCESS BY ALWAYS KEEPING GUNS LOCKED AWAY AND UNLOADED WHEN NOT IN USE. IF YOU KEEP A LOADED FIREARM WHERE A CHILD OBTAINS AND IMPROPERLY USES IT, YOU MAY BE FINED OR SENT TO PRISON. IT IS UNLAWFUL TO USE A MAGAZINE WITH A CAPACITY OVER 10 ROUNDS.

**MASSACHUSETTS STATE WARNING**

MASSECHUSETTS: IT IS UNLAWFUL TO CARRY ANY MAGAZINE OR BELT WHICH HOLDS MORE THAN TEN ROUNDS, UNLESS GRANTED BY THE BOSTON POLICE COMMISSIONER. IT IS UNLAWFUL TO STORE OR KEEP A FIREARM, RIFLE, SHOTGUN, OR MACHINE GUN IN ANY PLACE UNLESS THAT WEAPON IS EQUIPPED WITH A TAMPER RESISTANT SAFETY DEVICE OR IS STORED OR KEPT IN A SECURELY LOCKED CONTAINER.

**NEW YORK STATE WARNING**

IT IS UNLAWFUL TO CARRY ANY MAGAZINE OR BELT WHICH HOLDS MORE THAN TEN ROUNDS, UNLESS GRANTED BY THE STATE OF NEW YORK. THE USE OF A LOCKING DEVICE OR SAFETY LOCK IS ONLY ONE ASPECT OF RESPONSIBLE FIREARMS STORAGE. FOR INCREASED SAFETY, FIREARMS SHOULD BE STORED UNLOADED AND LOCKED IN A LOCATION THAT IS BOTH SEPARATE FROM THEIR AMMUNITION AND INACCESSIBLE TO CHILDREN AND OTHER UNAUTHORIZED PERSONS.



## Safety Precautions

### WARNING:

DO NOT ATTEMPT TO USE ANY FIREARM WITHOUT HAVING A COMPLETE UNDERSTANDING OF ITS PARTICULAR CHARACTERISTICS AND SAFE USE.

Safety must be the first and constant consideration of every person who handles firearms and ammunition. The person with a gun in his possession has an important responsibility. He/she must know how to use his/her firearm safely:

1. Always keep the gun holstered except when drawn for a definite purpose.
2. Always check the gun for live ammunition when picked up, drawn from the holster, handed to, or received from another person.
3. Never point the firearm at anything you do not intend to shoot.
4. Never cock the gun unless you are ready to shoot. Do not even insert your finger in the trigger guard until you are ready to shoot.
5. Avoid dry firing even with dummy cartridges, unless the same is performed on a regular target range or at a known inanimate target.
6. When holding the gun that is ready to fire, be absolutely certain that it is not pointed at any part of your body or at any person within your immediate vicinity.
7. Beware of obstructions in barrel. If, when firing, a weak or peculiar report is heard, cease firing and inspect the barrel for an obstruction. Remove magazine then check to insure there is no obstruction in barrel or chamber.
8. When a misfire or a "dud" is experienced keep the pistol pointed at the target for at least ten seconds before inspecting the gun; a delayed firing may occur.
9. Remove magazine and then check chamber.
10. When possible, wear shooting glasses and hearing protectors when firing.
11. Do not shoot at a hard surface, or water for the bullet can glance off and travel in unpredictable directions with considerable velocity.
12. Avoid drinking alcoholic beverages when handling the firearm.

### WARNING:

YOU SHOULD NEVER DEPEND ON A SAFETY MECHANISM OR ANY OTHER MECHANICAL DEVICE TO JUSTIFY CARELESS AND IMPROPER HANDLING.

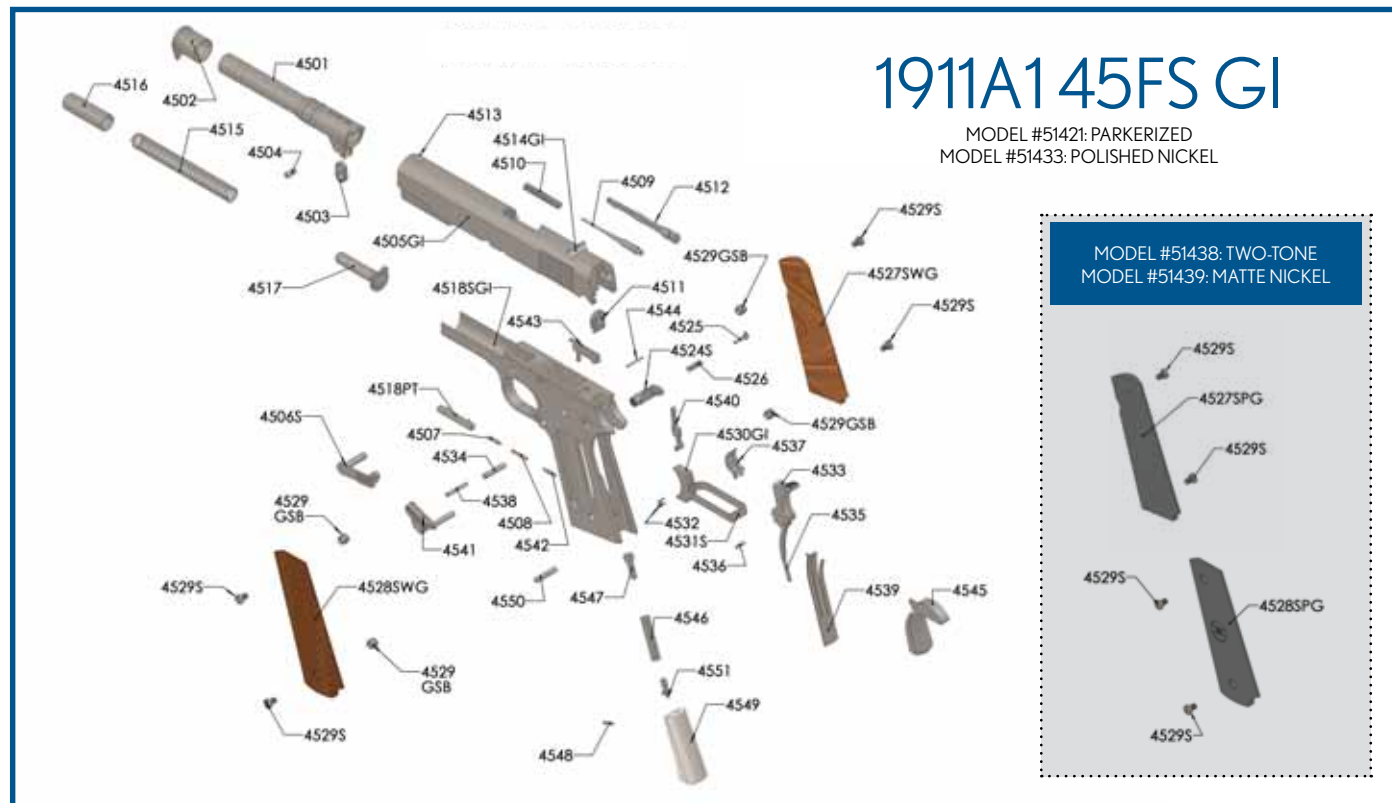
### WARNING:

THIS GUN WAS MANUFACTURED TO PERFORM PROPERLY WITH THE ORIGINAL PARTS AS DESIGNED. PLEASE MAKE SURE ANY PARTS YOU BUY ARE INSTALLED CORRECTLY AND THAT NEITHER REPLACEMENTS NOR ORIGINALS ARE ALTERED OR CHANGED. PUTTING A GUN TOGETHER INCORRECTLY OR WITH MODIFIED PARTS CAN RESULT IN DAMAGED GUN, DANGER, AND INJURY OR DEATH. ANY MODS TO FIREARM WILL VOID FACTORY WARRANTY.

# 1911 STANDARD GI SERIES | 45 ACP



Weight Unloaded	Weight Loaded	Overall Height	Barrel Length	Trigger Travel	Action	# of Grooves	Length of Twist	Frame Finish	Slide Finish	Recoil Spring Rate	Main Spring Rate
2.47 lbs	2.84 lbs.	5.5 inch	5 inch	n/a	Single	6	1 in 16"	Parkerized	Parkerized	16 lbs	18 lbs



## PART NUMBER

## PART NAME

• 22MM01	• 4529	• Barrel	• Grip panel Right	• Main Spring Cap Pin
• 4502	• 4530MR2	• Barrel Bushing	• Grip Panel Left	• Main Spring Housing
• 4503	• 4531	• Barrel Link	• Grip Screw	• Main Spring Housing Pin
• 4504	• 4532	• Barrel Link Pin	• Trigger Shoe	• Main Spring Housing Pin
• 22MM05	• 4533C	• Slide	• Trigger Stirrup	• Retainer
• 4506	• 4534	• Slide Stop (Std.)	• Trigger Stirrup Pin	
• 4507	• 4535	• Slide Stop Plunger	• Combat Hammer	
• 4508	• 4536	• Plunger Spring	• Hammer Pin	
• 22MM09	• 4537	• Firing Pin	• Hammer Strut	
• 22MM10	• 4538	• Firing Pin Spring	• Hammer Strut Pin	
• 4511	• 4539	• Firing Pin Stop	• Sear	
• 0912	• 4540	• Extractor	• Sear Pin	
• 4513A	• 4541	• Front Sight	• Sear Spring	
• 4514ASF	• 4542	• Rear Sight	• Disconnecter	
• 22MM15	• 0943	• Recoil Spring	• Safety Lock (Std.)	
• 4516	• 4544	• Recoil Spring Plug	• Safety Lock Plunger	
• 4517	• 4545HS	• Recoil Spring Guide	• Ejector	
• 4518	• 22MM46	• Frame	• Ejector Pin	
• 0919MM	• 4547	• Magazine Assembly	• Beavertail Grip Safety (Hi-Sweep)	
• 4524	• 4548	• Magazine Release	• Main Spring	
• 4525	• 4549	• Magazine Release Lock	• Main Spring Cap	
• 4526	• 4550	• Magazine Release Spring		
• 4527	• 4551			
• 4528				

## GENERAL INFO AND MECHANICAL CHARACTERISTICS

### Basic Model Description

Chambered in .45acp, .38super, or .9mm and outfitted with smooth wood grips and a parkerized finish, this is the 1911 Standard GI Series. Faithful to the original 1911 design, the Standard GI is equipped with a 5 inch barrel, fixed sights, and an 8 round magazine. Perfect for the first time shooter or collector.



### Safety Features

- 1. Safety Lock** - the pistol is fitted with a safety lock which when applied at the cocked position, blocks the sear and hammer to prevent the gun from being fired.
- 2. Grip Safety** - The pistol cannot be fired until the grip safety is pressed in, when the gun is gripped for firing.
- 3. Disconnecter Safety** - The pistol is designed with an automatic disconnecter, which enables it to fire only when it is fully locked and the trigger is released after each shot.
- 4. Half-cocked Position** - The hammer is provided with a half-cock notch, which allows it to be locked in half-cocked position in cases of unintentional hammer release or follow through caused by sear bounce.
- 5. Inertia Firing Pin** - The firing pin is designed to operate on the principle of inertia, with its length shorter than the overall length of the breech block. It requires a blow from the fully-cocked hammer to strike and percuss the cartridge primer.

### Special Features

- 1** GI serrated flat top slide with ball nose scallop and heavy chamfer on lowered ejection port, and tight rim clearance on breech face.
- 2** Contoured and lightened forged barrel with extra deep upper locking lugs, oversized lower lug and heat treated to 40-42 Rc.
- 3** True 1911-series 70 clone. (As with any 1911-style pistol, the use of aftermarket products may need minor fitting.)
- 4** Combat GI-style hammer with serrated non-slip spur.
- 5** Standard GI-style grip safety.

**WARNING:**  
SPECIFICATIONS SUBJECT TO CHANGE WITHOUT NOTICE.

### Loading

To load the magazine, place the first cartridge in the front end of the magazine follower and push it down until it can be slid in under the feed lips of the magazine. Place the second cartridge on top of the first and force it down in the same way as the first one. Repeat this procedure until the magazine contains the number of cartridges you intend to load. To load the pistol, insert the loaded magazine into the grip and push it up until the magazine release engages in its slot locking in place. Hold the pistol firmly with your firing hand. Grasp the slide on its serrated portion with your other hand and pull it to the rear as far as it will go. Then, release the slide smartly. A cartridge is now loaded in the chamber and the pistol is ready to fire. Engage the safety and leave it there until you are ready to shoot.

### Firing

To fire the pistol, disengage the safety, obtain the correct sight alignment and sight picture and squeeze the trigger. To fire successive shots, the trigger must be released and squeezed repeatedly. When the last cartridge from the magazine has been fired, the slide remains to the rear. If you intend not to shoot or cease firing, remember you have a loaded gun in your hand. First keep the gun pointed in a safe direction and keep your finger off the trigger.

### Unloading

To unload, press the magazine release and remove the magazine. If the slide is in the forward position, pull it to the rear and retain by pushing the slide stop up. Inspect the chamber to make sure that the pistol is clear and unloaded. If there is a shell or unfired cartridge in the chamber, manually remove it before pressing the slide stop down. Your gun is now unloaded.

**WARNING:**

ENSURE FIREARM IS UNLOADED AND MAGAZINE IS REMOVED BEFORE STARTING DISASSEMBLY OR REASSEMBLY PROCESS.

### Disassembly - Barrel and Slide

1. Take apart the upper assembly by removing the magazine by pushing the magazine release.
2. Grab the gun upside down and push recoil spring plug downward, rotate the barrel bushing clockwise, releasing the recoil spring plug.
3. Cock the hammer, then push back slide. Align the slide with the disconnecting slot on the slide. Then push that slide stop underneath to pop it out.
4. Remove the whole assembly on the slide. Then remove the plug, spring, and recoil spring guide. Turn the barrel-bushing counter clockwise, which will allow you to remove the barrel and barrel bushing.
5. Remove the firing pin by pushing downward and slide the slide stop downward. Then you can remove the firing pin and spring.

### Disassembly - Frame

1. Cock hammer, place thumb safety halfway between “on” and “off” position, and pull the thumb safety off.
2. Remove the grip safety, the main spring housing, the hammer, the sear spring, the sear pin, sear and disconnecter.
3. To remove the magazine release, depress the magazine release button. Notice there is a slot on the right hand side of the gun by the trigger. Using a small screwdriver, rotate screw counter clockwise while magazine release is depressed. This allows you to remove the trigger assembly and the plunger assembly as well.

**WARNING:**

Re-check the gun for proper functioning before loading live ammo.



SEE FULL VIDEO TUTORIALS ON



### Reassembly - Frame

1. Grab frame and insert trigger assembly into the frame.
2. Next, grab magazine catch, or magazine release and insert into hole on right side of gun by trigger as shown. Grab the small screwdriver and find the slot on the frame and push from the back on the magazine release and insert. Rotate counter clockwise until you hear a click.
3. Make sure sear is sitting on the disconnecter correctly, and insert into the frame. Align the holes of the sear and disconnecter, and insert sear pin from left to right. Place sear spring into back of frame, paying special attention that left-hand side of sear spring is resting on top of sear leg. Sear spring must be locked in to place.
4. Slide main spring housing onto frame. Take the hammer and hammer pin and insert. Push slightly on the main spring housing, making sure the hammer is in the middle of the main spring housing.
5. Take the grip safety and put in place as shown.
6. Take the main spring housing pin, round edge first. Tap it in place with the handle of the screwdriver. Cock the hammer and then insert the plunger assembly and install the thumb safety.
7. Place the spring into the plunger assembly tube. Using a small screwdriver, depress spring to fully insert thumb safety. Insure safety is operational, then check and see if hammer is working properly.

### Reassembly - Slide

1. Take slide and install extractor into the extractor hole, insuring extractor is aligned properly.
2. Next, install the firing pin and firing pin spring into firing pin hole. Depress firing pin with pin punch. Insert firing pin stop fully. If inserted fully, firing pin should protrude out of back of firing pin stop.
3. Install barrel into slide, then add the barrel bushing into slide and rotate to secure. Add the spring with recoil spring guide and put into place.
4. Take slide assembly and install onto frame. Align the barrel link pin to slide stop hole and insert slide.
5. Slide the slide backwards, then push the slide stop into place when the disconnect slot matches up.
6. Move slide forward, engage thumb safety, then push the spring down with the recoil spring plug. Rotate the barrel bushing to secure.



## AMMO SELECTION

The RIA 1911-A1-FS-GI PISTOL is chambered for CAL .45acp, .38 super, or 9mm cartridges in the round nose configuration manufactured in accordance with standard industry practice. Non-standard or improperly loaded cartridges affect accuracy and cause mechanical feeding problems. Always check for the following possible defects before loading the ammunition into your pistol:

- 1 - Poorly seated primers
- 2 - Incorrect seating length
- 3 - Bullet head deformation on the front & shoulder
- 4 - Improper crimping
- 5 - Damaged case rims

## +P/+P+ INFORMATION

Factory +P ammunition manufactured to SAAMI/CIP/NATO is ok for use as a defensive round or for occasional range use. We do not recommend the use of any +P+ round as this could cause premature wear and tear on firearm and therefore may void your warranty.



### WARNING:

NEVER USE CARTRIDGES OF UNKNOWN CALIBER, ORIGIN, AND LOADS. IT IS EXTREMELY DANGEROUS TO USE A CARTRIDGE WHO'S PRESSURE IS GREATER THAN INDUSTRY STANDARDS, AS THE FIREARMS MAY BE DAMAGED, AND DEATH OR SERIOUS INJURY TO THE SHOOTER OR OTHER PERSONS MAY RESULT.



### WARNING:

ONLY USE AMMO MEETING EXACT SPECIFICATIONS. THE FIREARM WARRANTY IS VOIDED IF RELOADED AMMUNITION INSTEAD OF FACTORY AMMUNITION IS USED.

## Care & Maintenance

With proper care, your RIA 1911-A1-MS-GI PISTOL will provide you with years of dependable service. It should be inspected, cleaned and oiled periodically to ensure that it remains in good condition and functions safely and reliably. Under normal cleaning purposes, field stripping or dismounting of the slide and barrel assembly is sufficient.

## Cleaning

To clean the pistol after firing, first dismount the slide and barrel assembly. Scrub the barrel bore and chamber with a bore brush dipped in a gun cleaning solvent to remove lead residue and foreign matter left inside. Using an old toothbrush dipped in solvent, clean the areas around the slide's breech face to remove powder and primer residues. Other parts and areas to be cleaned are the frame and slide rails, firing pin, extractor claws, and other adjacent areas. After cleaning, wipe all surfaces with a clean dry cloth to remove all traces of the solvent and apply a light film of oil immediately thereafter.

To clean the pistol thoroughly, disassemble all parts to the extent described above, taking care not to ruin or lose any part. Clean and inspect all parts, then dry and lubricate very lightly. Reassemble the pistol, dry the barrel chamber and bore, and check the gun for proper function before loading live ammunition.

\* Refer to Assembly and Disassembly instructions to aid in proper cleaning.



# 1911 STANDARD GI SERIES | 1911 MIDSIZE GI

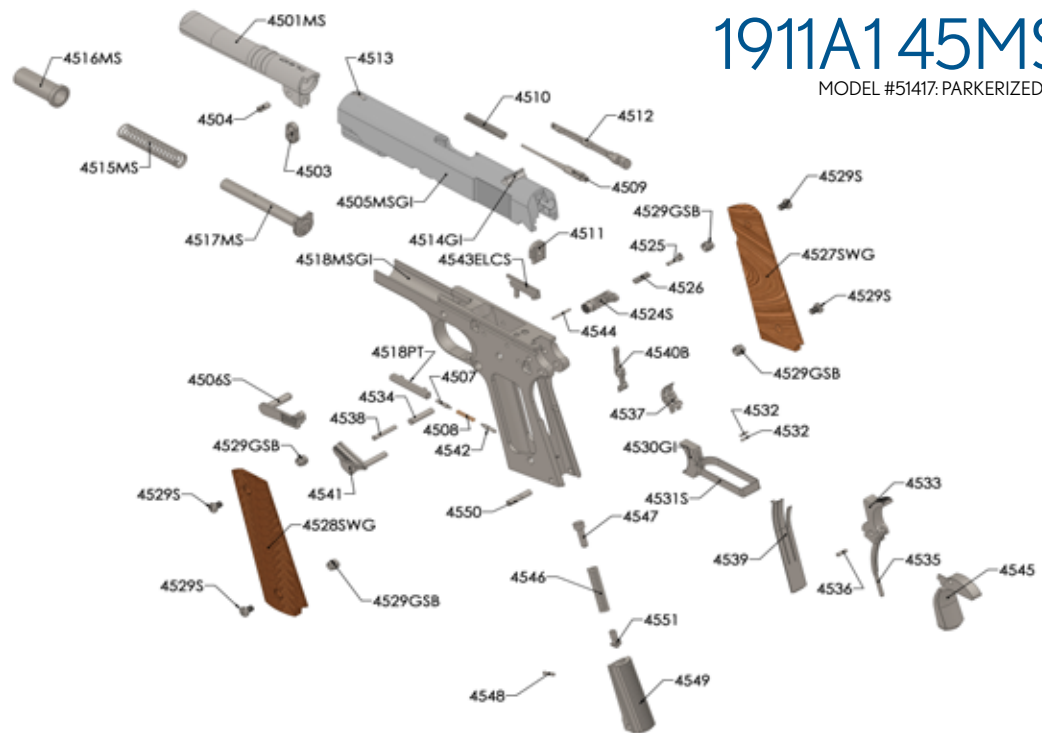


CALIBER  
SUPPORTED



45 ACP

Weight Unloaded	Weight Loaded	Overall Height	Barrel Length	Trigger Travel	Action	# of Grooves	Length of Twist	Frame Finish	Slide Finish	Recoil Spring Rate	Main Spring Rate
2.36 lbs	2.73 lbs	5.5 inch	4.5 inch	n/a	Single	6	1 in 16"	Parkerized	Parkerized	20 lbs	20 lbs



# 1911A1 45MS GI

MODEL #51417: PARKERIZED

## PART NUMBER

## PART NAME

• 22MM01  
• 4502  
• 4503  
• 4504  
• 22MM05  
• 4506  
• 4507  
• 4508  
• 22MM09  
• 22MM10  
• 0912  
• 4513A  
• 4514ASF  
• 22MM15  
• 4516  
• 4517  
• 4518  
• 0919MM  
• 4524  
• 4525  
• 4526  
• 4527  
• 4528

• 4529  
• 4530MR2  
• 4531  
• 4532  
• 4533C  
• 4534  
• 4535  
• 4536  
• 4537  
• 4538  
• 4539  
• 4540  
• 4541  
• 4542  
• 0943  
• 4544  
• 4545HS  
• 22MM46  
• 4547  
• 4548  
• 4549  
• 4550  
• 4551

• Barrel  
• Barrel Bushing  
• Barrel Link  
• Barrel Link Pin  
• Slide  
• Slide Stop (Std.)  
• Slide Stop Plunger  
• Plunger Spring  
• Firing Pin  
• Firing Pin Spring  
• Firing Pin Stop  
• Extractor  
• Front Sight  
• Rear Sight  
• Recoil Spring  
• Recoil Spring Plug  
• Recoil Spring Guide  
• Frame  
• Magazine Assembly  
• Magazine Release  
• Magazine Release Lock  
• Magazine Release Spring

• Grip panel Right  
• Grip Panel Left  
• Grip Screw  
• Trigger Shoe  
• Trigger Stirrup  
• Trigger Stirrup Pin  
• Combat Hammer  
• Hammer Pin  
• Hammer Strut  
• Hammer Strut Pin  
• Sear  
• Sear Pin  
• Sear Spring  
• Disconnecter  
• Safety Lock (Std.)  
• Safety Lock Plunger  
• Ejector  
• Ejector Pin  
• Beavertail Grip Safety (Hi-Sweep)  
• Main Spring  
• Main Spring Cap

• Main Spring Cap Pin  
• Main Spring Housing  
• Main Spring Housing Pin  
• Main Spring Housing Pin  
• Retainer

## GENERAL INFO AND MECHANICAL CHARACTERISTICS

### Basic Model Description

Chambered in .45acp and outfitted with a shorter barrel, smooth wood grips and a parkerized finish, this is the 1911 Midsize GI. Faithful to the original 1911 design, the Standard GI is equipped with a 4.5 inch barrel, fixed sights, and an 8 round magazine. Perfect for the first time shooter or collector.



### Safety Features

- Safety Lock** - the pistol is fitted with a safety lock which when applied at the cocked position, blocks the sear and hammer to prevent the gun from being fired.
- Grip Safety** - The pistol cannot be fired until the grip safety is pressed in, when the gun is gripped for firing.
- Disconnecter Safety** - The pistol is designed with an automatic disconnecter, which enables it to fire only when it is fully locked and the trigger is released after each shot.
- Half-cocked Position** - The hammer is provided with a half-cock notch, which allows it to be locked in half-cocked position in cases of unintentional hammer release or follow through caused by sear bounce.
- Inertia Firing Pin** - The firing pin is designed to operate on the principle of inertia, with its length shorter than the overall length of the breech block. It requires a blow from the fully cocked hammer to strike and percuss the cartridge primer.

### Special Features

- GI serrated flat top slide with ball nose scallop and heavy chamfer on lowered ejection port, and tight rim clearance on breech face.
- Contoured and lightened forged barrel with extra deep upper locking lugs, oversized lower lug and heat treated to 40-42 Rc.
- True 1911-series 70 clone. (As with any 1911-style pistol, the use of aftermarket products may need minor fitting.)
- Combat GI-style hammer with serrated non-slip spur.
- Standard GI-style grip safety.



**WARNING:**  
SPECIFICATIONS SUBJECT TO CHANGE WITHOUT NOTICE.

### Loading

To load the magazine, place the first cartridge in the front end of the magazine follower and push it down until it can be slid in under the feed lips of the magazine. Place the second cartridge on top of the first and force it down in the same way as the first one. Repeat this procedure until the magazine contains the number of cartridges you intend to load. To load the pistol, insert the loaded magazine into the grip and push it up until the magazine release engages in its slot locking in place. Hold the pistol firmly with your firing hand. Grasp the slide on its serrated portion with your other hand and pull it to the rear as far as it will go. Then, release the slide smartly. A cartridge is now loaded in the chamber and the pistol is ready to fire. Engage the safety and leave it there until you are ready to shoot.

### Firing

To fire the pistol, disengage the safety, obtain the correct sight alignment and sight picture and squeeze the trigger. To fire successive shots, the trigger must be released and squeezed repeatedly. When the last cartridge from the magazine has been fired, the slide remains to the rear. If you intend not to shoot or cease firing, remember you have a loaded gun in your hand. First keep the gun pointed in a safe direction and keep your finger off the trigger.

### Unloading

To unload, press the magazine release and remove the magazine. If the slide is in the forward position, pull it to the rear and retain by pushing the slide stop up. Inspect the chamber to make sure that the pistol is clear and unloaded. If there is a shell or unfired cartridge in the chamber, manually remove it before pressing the slide stop down. Your gun is now unloaded.

**WARNING:**

ENSURE FIREARM IS UNLOADED AND MAGAZINE IS REMOVED BEFORE STARTING DISASSEMBLY OR REASSEMBLY PROCESS.

**Disassembly - Barrel and Slide**

1. Moving the slide back, align disassembly notch with back of slide stop. Remove slide stop.
2. Remove complete upper assembly from frame.
3. Press the guide rod forward, until the small hole on the rod is exposed on the front of the gun. Using a small Allen wrench or paper clip with L-shaped bend to keep the spring depressed, you are allowed to remove the rod, spring, and reverse plug. Push the recoil spring assembly containing the guide rod, spring, and reverse plug towards the back of the slide to remove.
4. Remove the firing pin by depressing firing pin and pushing downward on firing pin stop. Then you can remove the firing pin and spring.

**Disassembly - Frame**

1. Cock hammer, place thumb safety halfway between “on” and “off” position, and pull the thumb safety off.
2. Remove the grip safety, the main spring housing, the hammer, the sear spring, the sear pin, sear and disconnecter.
3. To remove the magazine release, depress the magazine release button. Notice there is a slot on the right hand side of the gun by the trigger. Using a small screwdriver, rotate screw counter clockwise while magazine release is depressed. This allows you to remove the trigger assembly and the plunger assembly as well.

**WARNING:**

RE-CHECK THE GUN FOR PROPER FUNCTIONING BEFORE LOADING LIVE AMMO.



SEE FULL VIDEO TUTORIALS ON

**Reassembly - Frame**

1. Grab frame and insert trigger assembly into the frame.
2. Next, grab magazine catch, or magazine release and insert into hole on right side of gun by trigger as shown. Grab the small screwdriver and find the slot on the frame and push from the back on the magazine release and insert. Rotate counter clockwise until you hear a click.
3. Make sure sear is sitting on the disconnecter correctly, and insert into the frame. Align the holes of the sear and disconnecter, and insert sear pin from left to right. Place sear spring into back of frame, paying special attention that left-hand side of sear spring is resting on top of sear leg. Sear spring must be locked in to place
4. Slide main spring housing onto frame. Take the hammer and hammer pin and insert. Push slightly on the main spring housing, making sure the hammer is in the middle of the main spring housing.
5. Take the grip safety and put in place as shown.
6. Take the main spring housing pin, round edge first. Tap it in place with the handle of the screwdriver. Cock the hammer and then insert the plunger assembly and install the thumb safety.
7. Place the spring into the plunger assembly tube. Using a small screwdriver, depress spring to fully insert thumb safety. Insure safety is operational, then check and see if hammer is working properly.

**Reassembly - Barrel and Slide**

1. Take slide and install extractor into the extractor hole, insuring extractor is aligned properly.
2. Next, install the firing pin and firing pin spring into firing pin hole. Depress firing pin with pin punch. Insert firing pin stop fully. If inserted fully, firing pin should protrude out of back of firing pin stop.
3. Install barrel in to slide. Install the recoil spring assembly containing guide rod, recoil spring, and reverse plug. (NOTE: Insure shoulders on reverse plug are seeded correctly to shoulders on back of spring tunnel on slide.)
4. Depress guide rod and remove paper clip/Allen wrench.
5. Take slide assembly and install onto frame. Align the barrel link pin to slide stop hole and insert slide stop.
6. Slide the slide backwards, then push the slide stop into place when the disconnect slot matches up.



## Ammo Selection

The RIA 1911-A1-MS-GI PISTOL is chambered for CAL .45acp cartridges in the round nose configuration manufactured in accordance with standard industry practice. Non-standard or improperly loaded cartridges affect accuracy and cause mechanical feeding problems. Always check for the following possible defects before loading the ammunition into your pistol:

- 1 - Poorly seated primers
- 2 - Incorrect seating length
- 3 - Bullet head deformation on the front & shoulder
- 4 - Improper crimping
- 5 - Damaged case rims

## +P/+P+ INFORMATION

Factory +P ammunition manufactured to SAAMI/CIP/NATO is ok for use as a defensive round or for occasional range use. We do not recommend the use of any +P+ round as this could cause premature wear and tear on firearm and therefore may void your warranty.

## Care & Maintenance

With proper care, your RIA 1911-A1-MS-GI PISTOL will provide you with years of dependable service. It should be inspected, cleaned and oiled periodically to ensure that it remains in good condition and functions safely and reliably. Under normal cleaning purposes, field stripping or dismounting of the slide and barrel assembly is sufficient.



### WARNING:

NEVER USE CARTRIDGES OF UNKNOWN CALIBER, ORIGIN, AND LOADS. IT IS EXTREMELY DANGEROUS TO USE A CARTRIDGE WHOSE PRESSURE IS GREATER THAN INDUSTRY STANDARDS, AS THE FIREARMS MAY BE DAMAGED, AND DEATH OR SERIOUS INJURY TO THE SHOOTER OR OTHER PERSONS MAY RESULT.



### WARNING:

ONLY USE AMMO MEETING EXACT SPECIFICATIONS. THE FIREARM WARRANTY IS VOIDED IF RELOADED AMMUNITION INSTEAD OF FACTORY AMMUNITION IS USED.

## Care & Maintenance

With proper care, your RIA 1911-A1-MS-GI PISTOL will provide you with years of dependable service. It should be inspected, cleaned and oiled periodically to ensure that it remains in good condition and functions safely and reliably. Under normal cleaning purposes, field stripping or dismounting of the slide and barrel assembly is sufficient.

## Cleaning

To clean the pistol after firing, first dismount the slide and barrel assembly. Scrub the barrel bore and chamber with a bore brush dipped in a gun cleaning solvent to remove lead residue and foreign matter left inside. Using an old toothbrush dipped in solvent, clean the areas around the slide's breech face to remove powder and primer residues. Other parts and areas to be cleaned are the frame and slide rails, firing pin, extractor claws, and other adjacent areas. After cleaning, wipe all surfaces with a clean dry cloth to remove all traces of the solvent and apply a light film of oil immediately thereafter.

To clean the pistol thoroughly, disassemble all parts to the extent described above, taking care not to ruin or lose any part. Clean and inspect all parts, then dry and lubricate very lightly. Reassemble the pistol, dry the barrel chamber and bore, and check the gun for proper function before loading live ammunition.

\* Refer to Assembly and Disassembly instructions to aid in proper cleaning.



# 1911 STANDARD GI | 1911 COMPACT GI



CALIBER SUPPORTED



45 ACP

Weight Unloaded	Weight Loaded	Overall Height	Barrel Length	Trigger Travel	Action	# of Grooves	Length of Twist	Frame Finish	Slide Finish	Recoil Spring Rate	Main Spring Rate
2.16 lbs	2.43 lbs	5.5 inch	3.5 inch	n/a	Single	6	1 in 16"	Parkerized	Parkerized	22 lbs	22 lbs

# 1911A1 45CS GI

MODEL #51416 PARKERIZED



## PART NUMBER

## PART NAME

- 22MM01
- 4502
- 4503
- 4504
- 22MM05
- 4506
- 4507
- 4508
- 22MM09
- 22MM10
- 4511
- 0912
- 4513A
- 4514ASF
- 22MM15
- 4516
- 4517
- 4518
- 0919MM
- 4524
- 4525
- 4526
- 4527
- 4528

- 4529
- 4530MR2
- 4531
- 4532
- 4533C
- 4534
- 4535
- 4536
- 4537
- 4538
- 4539
- 4540
- 4541
- 4542
- 0943
- 4544
- 4545HS
- 22MM46
- 4547
- 4548
- 4549
- 4550
- 4551

- Barrel
- Barrel Bushing
- Barrel Link
- Barrel Link Pin
- Slide
- Slide Stop (Std.)
- Slide Stop Plunger
- Plunger Spring
- Firing Pin
- Firing Pin Spring
- Firing Pin Stop
- Extractor
- Front Sight
- Rear Sight
- Recoil Spring
- Recoil Spring Plug
- Recoil Spring Guide
- Frame
- Magazine Assembly
- Magazine Release
- Magazine Release Lock
- Magazine Release Spring

- Grip panel Right
- Grip Panel Left
- Grip Screw
- Trigger Shoe
- Trigger Stirrup
- Trigger Stirrup Pin
- Combat Hammer
- Hammer Pin
- Hammer Strut
- Hammer Strut Pin
- Sear
- Sear Pin
- Sear Spring
- Disconnecter
- Safety Lock (Std.)
- Safety Lock Plunger
- Ejector
- Ejector Pin
- Beavertail Grip Safety (Hi-Sweep)
- Main Spring
- Main Spring Cap

- Main Spring Cap Pin
- Main Spring Housing
- Main Spring Housing Pin
- Main Spring Housing Pin
- Retainer

## GENERAL INFO AND MECHANICAL CHARACTERISTICS

### Basic Model Description

Chambered in .45acp and outfitted with a shorter barrel, smooth wood grips, and a parkerized finish, this is the 1911 Compact GI. Faithful to the original 1911 design, the Standard GI is equipped with a 3.5 inch barrel, fixed sights, and a 7 round magazine. Perfect for the first time shooter, collector, or lawful concealed carry.



### Safety Features

- 1. Safety Lock** - the pistol is fitted with a safety lock which when applied at the cocked position, blocks the sear and hammer to prevent the gun from being fired.
- 2. Grip Safety** - The pistol cannot be fired until the grip safety is pressed in, when the gun is gripped for firing.
- 3. Disconnecter Safety** - The pistol is designed with an automatic disconnecter, which enables it to fire only when it is fully locked and the trigger is released after each shot.
- 4. Half-cocked Position** - The hammer is provided with a half-cock notch which allows it to be locked in half-cocked position in cases of unintentional hammer release or follow through caused by sear bounce.
- 5. Inertia Firing Pin** - The firing pin is designed to operate on the principle of inertia, with its length shorter than the overall length of the breech block. It requires a blow from the fully cocked hammer to strike and percuss the cartridge primer.

### Special Features

- 1** GI serrated flat top slide with ball nose scallop and heavy chamfer on lowered ejection port, and tight rim clearance on breech face.
- 2** Contoured and lightened forged barrel with extra deep upper locking lugs, oversized lower lug and heat treated to 40-42 Rc.
- 3** True 1911-series 70 clone. (As with any 1911-style pistol, the use of aftermarket products may need minor fitting.)
- 4** Combat GI-style hammer with serrated non-slip spur.
- 5** Standard GI-style grip safety.

**WARNING:**  
SPECIFICATIONS SUBJECT TO CHANGE WITHOUT NOTICE.

### Loading

To load the magazine, place the first cartridge in the front end of the magazine follower and push it down until it can be slid in under the feed lips of the magazine. Place the second cartridge on top of the first and force it down in the same way as the first one. Repeat this procedure until the magazine contains the number of cartridges you intend to load. To load the pistol, insert the loaded magazine into the grip and push it up until the magazine release engages in its slot locking in place. Hold the pistol firmly with your firing hand. Grasp the slide on its serrated portion with your other hand and pull it to the rear as far as it will go. Then, release the slide smartly. A cartridge is now loaded in the chamber and the pistol is ready to fire. Engage the safety and leave it there until you are ready to shoot.

### Firing

To fire the pistol, disengage the safety, obtain the correct sight alignment and sight picture and squeeze the trigger. To fire successive shots, the trigger must be released and squeezed repeatedly. When the last cartridge from the magazine has been fired, the slide remains to the rear. If you intend not to shoot or cease firing, remember you have a loaded gun in your hand. First keep the gun pointed in a safe direction and keep your finger off the trigger.

### Unloading

To unload, press the magazine release and remove the magazine. If the slide is in the forward position, pull it to the rear and retain by pushing the slide stop up. Inspect the chamber to make sure that the pistol is clear and unloaded. If there is a shell or unfired cartridge in the chamber, manually remove it before pressing the slide stop down. Your gun is now unloaded.







**WARNING:**  
ENSURE FIREARM IS UNLOADED AND MAGAZINE IS REMOVED BEFORE STARTING DISASSEMBLY OR REASSEMBLY PROCESS.

### Disassembly - Barrel and Slide

1. Moving the slide back, align disassembly notch with back of slide stop. Remove slide stop.
2. Remove complete upper assembly from frame.
3. Press the guide rod forward, until the small hole on the rod is exposed on the front of the gun. Using a small Allen wrench or paper clip with L-shaped bend to keep the spring depressed, you are allowed to remove the rod, spring, and reverse plug. Push the recoil spring assembly containing the guide rod, spring, and reverse plug towards the back of the slide to remove.
4. Remove the firing pin by depressing firing pin and pushing downward on firing pin stop. Then you can remove the firing pin and spring.

### Disassembly - Frame

1. Cock hammer, place thumb safety halfway between “on” and “off” position, and pull the thumb safety off.
2. Remove the grip safety, the main spring housing, the hammer, the sear spring, the sear pin, sear and disconnecter.
3. To remove the magazine release, depress the magazine release button. Notice there is a slot on the right hand side of the gun by the trigger. Using a small screwdriver, rotate screw counter clockwise while magazine release is depressed. This allows you to remove the trigger assembly and the plunger assembly as well.



**WARNING:**  
RE-CHECK THE GUN FOR PROPER FUNCTIONING BEFORE LOADING LIVE AMMO.



SEE FULL VIDEO TUTORIALS ON



### Reassembly - Frame

1. Grab frame and insert trigger assembly into the frame.
2. Next, grab magazine catch, or magazine release and insert into hole on right side of gun by trigger as shown. Grab the small screwdriver and find the slot on the frame and push from the back on the magazine release and insert. Rotate counter clockwise until you hear a click.
3. Make sure sear is sitting on the disconnecter correctly, and insert into the frame. Align the holes of the sear and disconnecter, and insert sear pin from left to right. Place sear spring into back of frame, paying special attention that left-hand side of sear spring is resting on top of sear leg. Sear spring must be locked in to place.
4. Slide main spring housing onto frame. Take the hammer and hammer pin and insert. Push slightly on the main spring housing, making sure the hammer is in the middle of the main spring housing.
5. Take the grip safety and put in place as shown.
6. Take the main spring housing pin, round edge first. Tap it in place with the handle of the screwdriver. Cock the hammer and then insert the plunger assembly and install the thumb safety.
7. Place the spring into the plunger assembly tube. Using a small screwdriver, depress spring to fully insert thumb safety. Insure safety is operational, then check and see if hammer is working properly.

### Reassembly - Barrel & Slide

1. Take slide and install extractor into the extractor hole, insuring extractor is aligned properly.
2. Next, install the firing pin and firing pin spring into firing pin hole. Depress firing pin with pin punch. Insert firing pin stop fully. If inserted fully, firing pin should protrude out of back of firing pin stop.
3. Install barrel in to slide. Install the recoil spring assembly containing guide rod, recoil spring, and reverse plug. (NOTE: Insure shoulders on reverse plug are seeded correctly to shoulders on back of spring tunnel on slide.)
4. Depress guide rod and remove paper clip/Allen wrench.
5. Take slide assembly and install onto frame. Align the barrel link pin to slide stop hole and insert slide stop.
6. Slide the slide backwards, then push the slide stop into place when the disconnect slot matches up.

## AMMO SELECTION

The RIA 1911-A1-CS-GI PISTOL is chambered for CAL .45acp cartridges in the round nose configuration manufactured in accordance with standard industry practice. Non-standard or improperly loaded cartridges affect accuracy and cause mechanical feeding problems. Always check for the following possible defects before loading the ammunition into your pistol:

- 1 - Poorly seated primers
- 2 - Incorrect seating length
- 3 - Bullet head deformation on the front & shoulder
- 4 - Improper crimping
- 5 - Damaged case rims

### +P/+P+ INFORMATION

Factory +P ammunition manufactured to SAAMI/CIP/NATO is ok for use as a defensive round or for occasional range use. We do not recommend the use of any +P+ round as this could cause premature wear and tear on firearm and therefore may void your warranty.



#### WARNING:

NEVER USE CARTRIDGES OF UNKNOWN CALIBER, ORIGIN, AND LOADS. IT IS EXTREMELY DANGEROUS TO USE A CARTRIDGE WHOSE PRESSURE IS GREATER THAN INDUSTRY STANDARDS, AS THE FIREARMS MAY BE DAMAGED, AND DEATH OR SERIOUS INJURY TO THE SHOOTER OR OTHER PERSONS MAY RESULT.



#### WARNING:

ONLY USE AMMO MEETING EXACT SPECIFICATIONS. THE FIREARM WARRANTY IS VOIDED IF RELOADED AMMUNITION INSTEAD OF FACTORY AMMUNITION IS USED.

With proper care, your RIA 1911-A1-CS-GI PISTOL will provide you with years of dependable service. It should be inspected, cleaned and oiled periodically to ensure that it remains in good condition and functions safely and reliably. Under normal cleaning purposes, field stripping or dismounting of the slide and barrel assembly is sufficient.

## Cleaning

To clean the pistol after firing, first dismount the slide and barrel assembly. Scrub the barrel bore and chamber with a bore brush dipped in a gun cleaning solvent to remove lead residue and foreign matter left inside. Using an old toothbrush dipped in solvent, clean the areas around the slide's breech face to remove powder and primer residues. Other parts and areas to be cleaned are the frame and slide rails, firing pin, extractor claws, and other adjacent areas. After cleaning, wipe all surfaces with a clean dry cloth to remove all traces of the solvent and apply a light film of oil immediately thereafter.

To clean the pistol thoroughly, disassemble all parts to the extent described above, taking care not to ruin or lose any part. Clean and inspect all parts, then dry and lubricate very lightly. Reassemble the pistol, dry the barrel chamber and bore, and check the gun for proper function before loading live ammunition.

\* Refer to Assembly and Disassembly instructions to aid in proper cleaning.

### Storage & Transportation

When storing the firearm and ammunition, store in separate locations. Store ammo in a cool, dry location.

When storing the gun for a prolonged period of time, it is necessary to oil it heavily with an acid-free lubricant. The external parts must be coated with an anti-rust oil or grease to prevent moisture from settling on the metal and seeping into the internal mechanism causing the parts to rust and malfunction. Before usage, the pistol must be cleaned and wiped dry again as discussed previously.

**WARNING:**

CHILDREN ARE ATTRACTED TO AND CAN OPERATE FIREARMS THAT CAN CAUSE SEVERE INJURIES OR DEATH. PREVENT CHILD ACCESS BY ALWAYS KEEPING GUNS LOCKED AWAY AND UNLOADED WHEN NOT IN USE. IF YOU KEEP A LOADED FIREARM WHERE A CHILD OBTAINS AND IMPROPERLY USES IT, YOU MAY BE FINED OR SENT TO PRISON.

**WARNING:**

THE FIREARM SHOULD BE RE-STORED IN ROOMS WITH A DRY ATMOSPHERE AND WITH THE LEAST HUMIDITY IT SHOULD NOT BE STORED ENCASED IN LEATHER OR ANYTHING THAT WILL ATTRACT AND HOLD MOISTURE, CAUSING IT TO RUST.

Contact the Armscor service center for servicing and repair requests.

**CALL: 775-537-1444**

**ORDERING PARTS**

Visit RIA website to browse, learn more about, and purchase parts and ammunition for all of your Rock Island Armory products.

**WWW.ROCKISLANDARMORY.COM**

**WWW.ROCKISLANDARMORY.COM**

 /ARMSCORPRECISION

 /ARMSCORPRECISION

**WARRANTY INFORMATION**

Arms Corporation of the Philippines will adjust or repair, to its commercial standard, the firearms or any part thereof found to be defective in material or workmanship. Such services shall be made free of charge within one (1) year from date of registered purchase.



**150 NORTH SMART WAY  
PAHRUMP, NV 89060**



[www.rockislandarmory.com](http://www.rockislandarmory.com)

