

## TecLocal 4.0.009 MultiUser Database

### Installation Manual: Buyer Mode & Multi-User (Part I - Server)

Version: 1.1

Author: TecCom Solution Management (AJO)

Date: 02.11.2015

In compiling these texts and figures the greatest care was taken. However, it is not possible to exclude errors completely in the user manual.

The publisher and authors are grateful for suggestions for improvement and for information about errors.

The companies, other names, and dates used in the examples are purely fictitious.

All the hardware and software names used are trade names and/or trademarks of the respective manufacturer.



# Content










- 1 Purpose of the document .....4**
- 2 Installation Prerequisites .....5**
  - 2.1 Installing Microsoft.NET Framework 4.0 .....5
  - 2.2 Microsoft .NET Framework 3.5 SP1 installation .....7
  - 2.3 Microsoft SQL Server 2012 Express with Tools installation ..... 11
    - 2.3.1 Download ..... 11
    - 2.3.2 Installation on 64-bit Operating Systems.....12
    - 2.3.3 Completing the SQL Server 2012 Express Edition Installation ..... 16
- 3 TecLocal 4.0 MultiUser Database Installation ..... 18**
  - 3.1 Installation with a new empty Database..... 18
  - 3.2 Installation using an existing MS Access Database .....21
- 4 TecLocal 4.0 MultiUser Database Maintenance Administration .....25**
  - 4.1 Tab “Maintenance” .....25
  - 4.2 Size Alerts .....26
  - 4.3 Scheduling .....27
- 5 Trouble Shooting .....28**
  - 5.1 Open Ports to connect TecLocal client with SQL databases.....28
  - 5.2 TecCom Helpdesk .....29

## 1 Purpose of the document

TecLocal 4.0 is part of the TecOrder solution which automates the business processes between manufacturers and wholesalers. TecLocal 4.0 can run in different modes, fulfilling different tasks. During the installation it needs to be specified in which mode TecLocal should run.

The following document provides detailed instructions on how to install the **server** for TecLocal 4.0 in **multi-user buyer mode**.

If TecLocal 4.0 is run in multi-user mode, the software's client is installed on more than one machine whereas a centrally used MS SQL Express database containing application data is stored on a server. This mode is marked orange in the graphic below.

Buyer Mode	
Single-User	<div style="border: 1px solid black; padding: 5px;">  <p>TecLocal 4.0 (automatically incl. MS Access database) <b>(Client)*</b></p> </div>
Multi-User	<div style="border: 1px solid black; padding: 5px;"> <div style="display: flex; justify-content: space-between;"> <div style="border: 1px solid black; padding: 5px; width: 45%;">  <p>TecLocal 4.0 <b>(Client)**</b></p> </div> <div style="width: 50%;"> <p>MS SQL 2012 Express database </p> <p>TecLocal MultiUser Database Administration Tool </p> <p>Optional: TecLocal 4.0 </p> <p><b>(Server)</b></p> </div> </div> </div>
Supplier Mode	
Single or Multi-User	<div style="border: 1px solid black; padding: 5px;"> <div style="display: flex; justify-content: space-between;"> <div style="border: 1px solid black; padding: 5px; width: 45%;"> <p>TecLocal 4.0 </p> <p><b>(Client) ***</b></p> </div> <div style="width: 50%;"> <p>Oracle Server &gt;= 11.2 </p> <p>MS SQL 2012 Express/ Standard </p> <p>TecConnect 4.0 </p> <p><b>(Server)</b></p> </div> </div> </div>

**Picture:** Overview of the different modes in which TecLocal can run including the required components

\* See separate installation manual **Installation Manual TecLocal 4.0.9 (Buyer – SingleUser - Client)**

\*\* See separate installation manual **Installation Manual TecLocal 4.0.9 (Buyer – MultiUser – Part II: Client)**

\*\*\* See separate installation manual **Installation Manual: Supplier Mode (Client)**

If TecLocal 4.0 runs in buyer mode as multi-user installation, it means that it is **used by several users** of one company **on the buyer side** (wholesale dealer and other replacement part buyers) to check a product's availability, clarify delivery dates, order replacement parts, confirm orders, notify of deliveries and receive invoices.

**Note:** In former TecLocal versions it was possible to store the application data in this multi-user scenario in an MS Access database. Due to occurring problems this is not supported anymore. Instead of the MS Access database a preinstalled MS SQL 2012 Express database server (free of charge, database size limited to 10 GB) is used.

Please note that in order to successfully install the TecLocal 4.0 client, a connection to the SQL server instance with administrator credentials is required (see [INS\\_TecLocal\\_Installation\\_Manual\\_Buyer\\_Multi-User\\_Part\\_II\\_Client\\_v4.0\\_en.pdf](#) for more details).

## 2 Installation Prerequisites

In order to successfully install and use TecLocal 4.0 MultiUser Database the following software has to be installed on the target machine:

- **Microsoft .NET Framework 4.0**
- **Microsoft SQL Server 2012 Express with Tools**

The Installation of **Microsoft SQL Server 2012 Express with Tools** requires:

- Windows Installer 4.5
- Microsoft .NET Framework 3.5 SP1
- Windows PowerShell

If Microsoft SQL Server 2012 Express with Tools is already installed on your machine, please skip to chapter “3 TecLocal 4.0 MultiUser Database Installation”.

If Microsoft.NET Framework 4.0 is already installed on your machine, please skip to chapter “2.2 Microsoft .NET Framework 3.5 SP1 installation”.

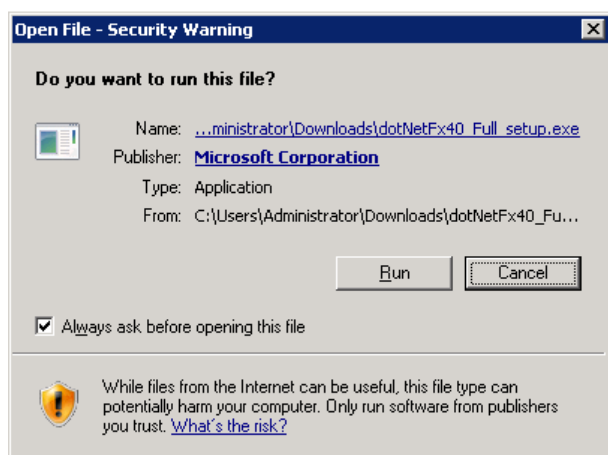
**Note:** If you want to migrate application data from an existing TecLocal installation the TecLocal version 3.0 Patch D needs to be preinstalled.

### 2.1 Installing Microsoft.NET Framework 4.0

After downloading Microsoft Framework 4.0 from the following link, start the setup:

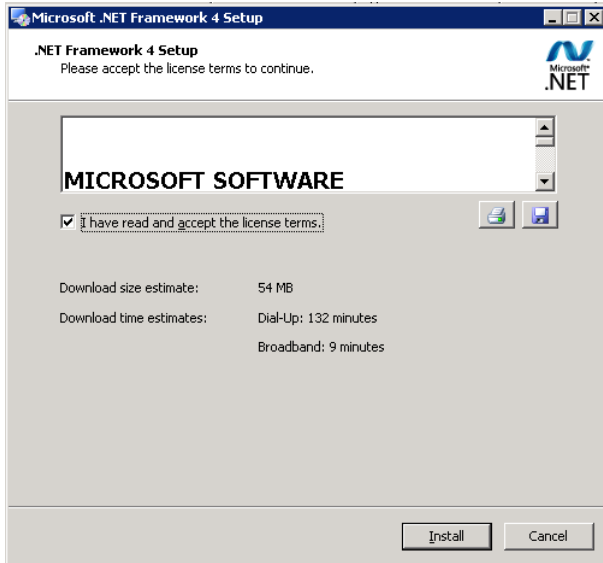
<http://www.microsoft.com/download/en/details.aspx?id=17851> .

In the dialog **Security Warning**, click **Run**.

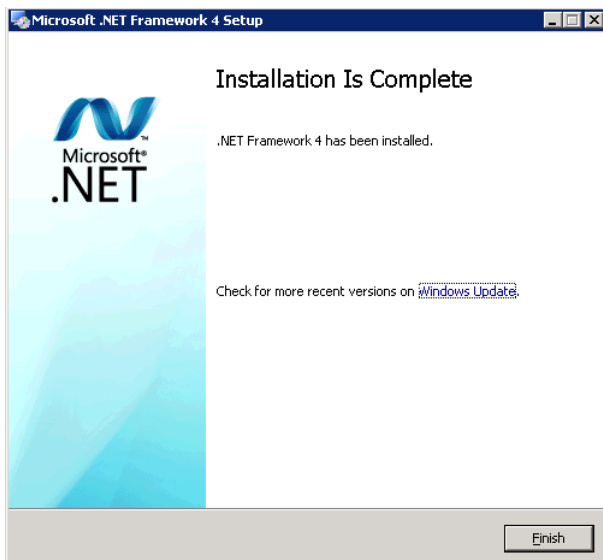


Activate the checkbox **I have read and accept the license terms** and click **Install**.

## 2 Installation Prerequisites

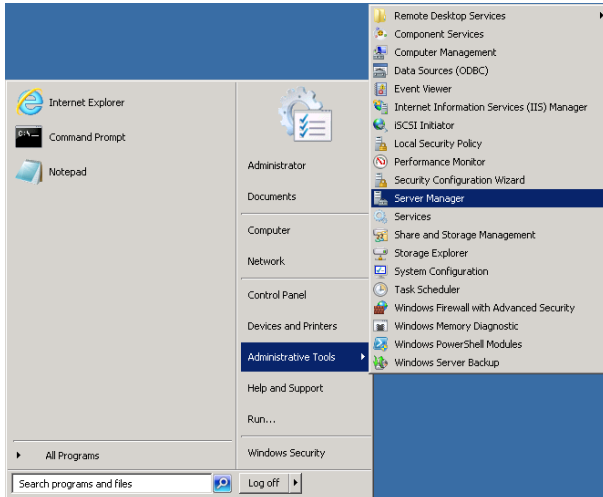


Click on **Finish** to complete the installation process.  
Reboot your machine if required.

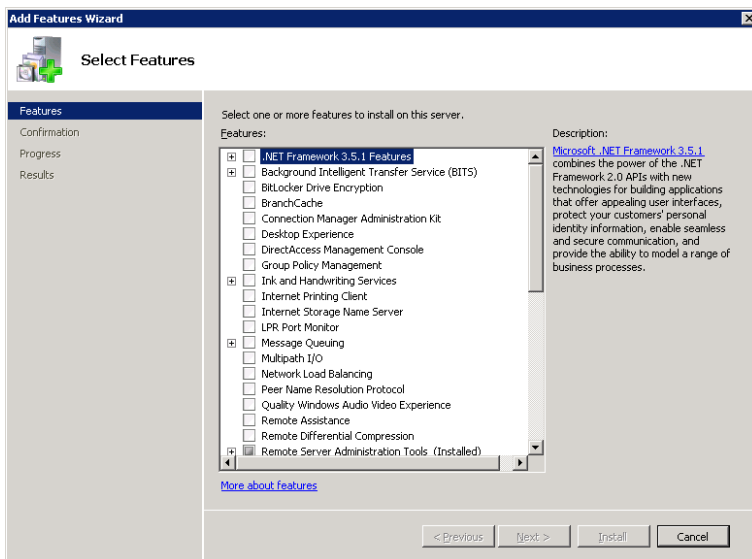


## 2.2 Microsoft .NET Framework 3.5 SP1 installation

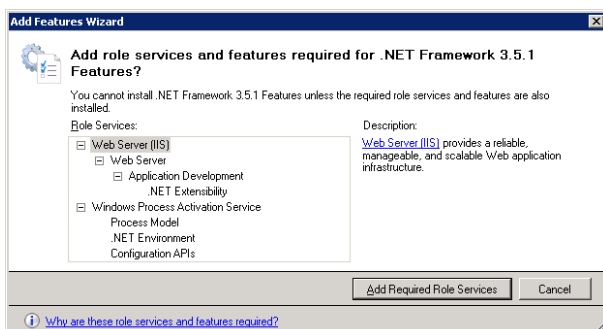
To install Microsoft .NET Framework 3.5 SP1 in Windows Server 2008 R2 or Windows Server 2012, go to **Start → Administrative Tools → Server Manager**:



In the Server Manager panel click on **Features**, then **Add Features**:

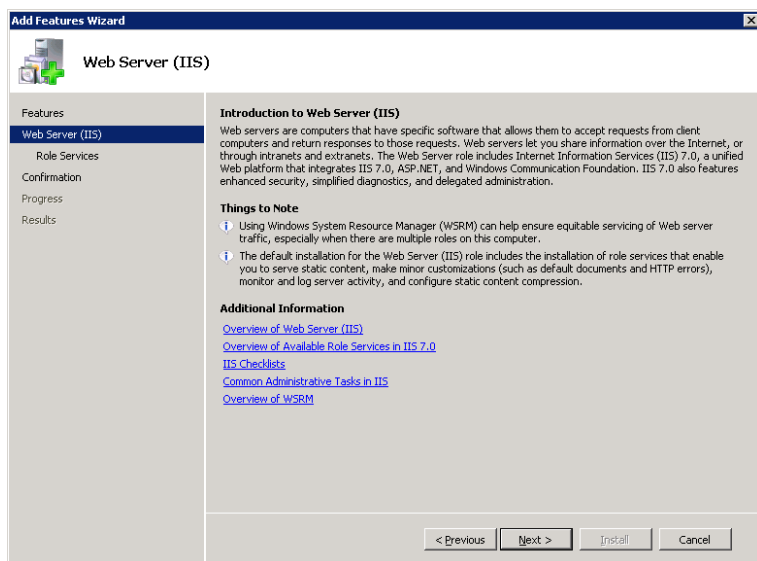


Select **.NET Framework 3.5.1 Features**, if you need to add new roles and/or features. The **Add features wizard** will display the following:

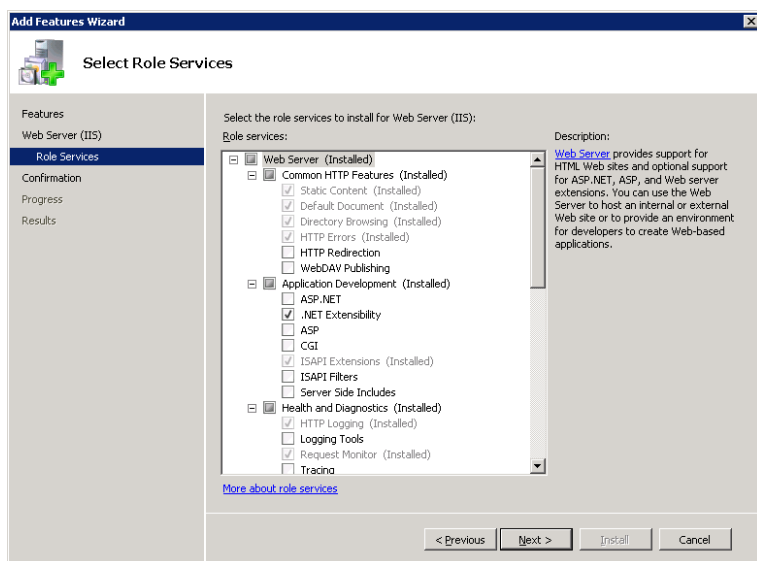


## 2 Installation Prerequisites

First click on **Add Required Role Services** and then click on **Next**.



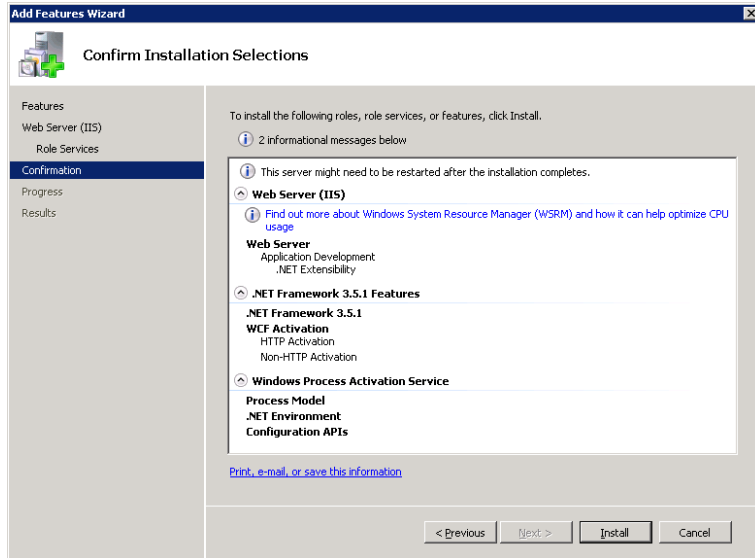
Click **Next**.



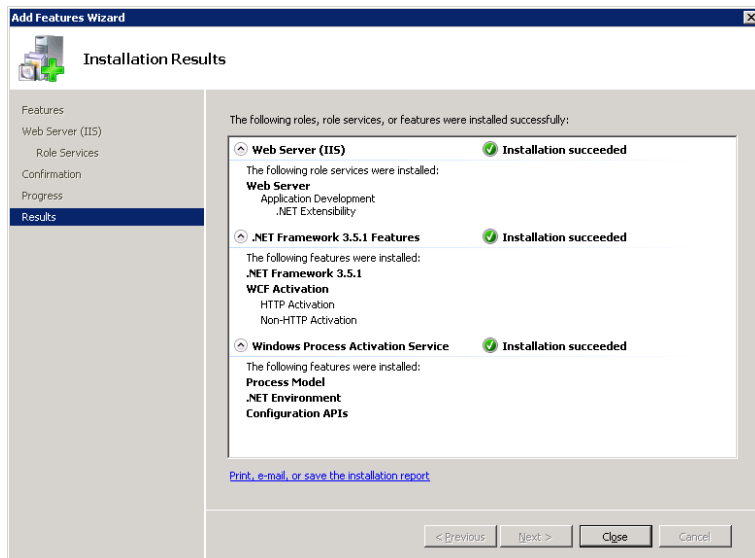
Click **Install**.



## 2 Installation Prerequisites

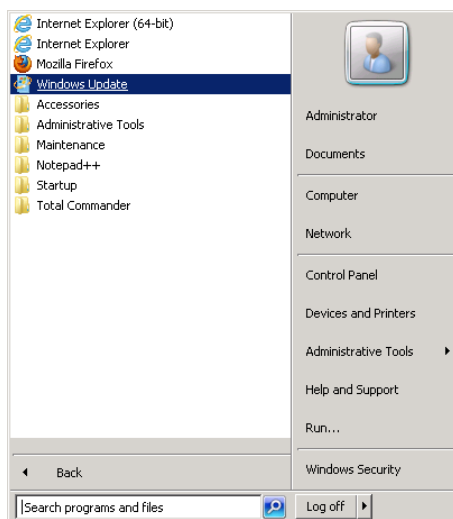


### Click Close.



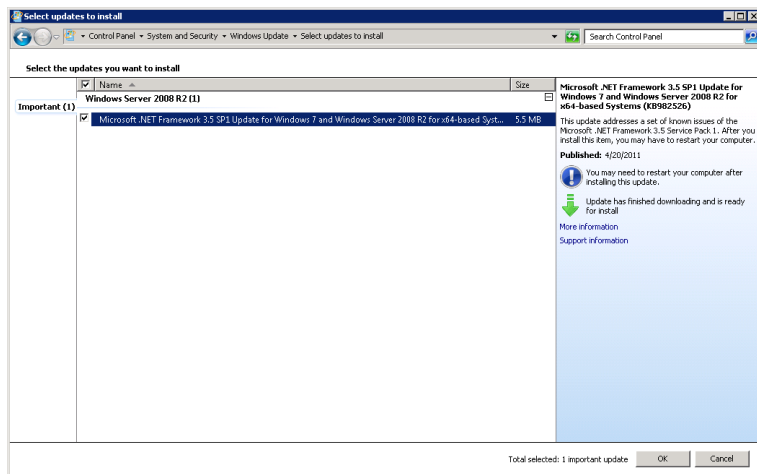
You are now ready to install the Microsoft .NET Framework 3.5 SP1:

Go to **Start** → **All Programs** → **Windows Update**



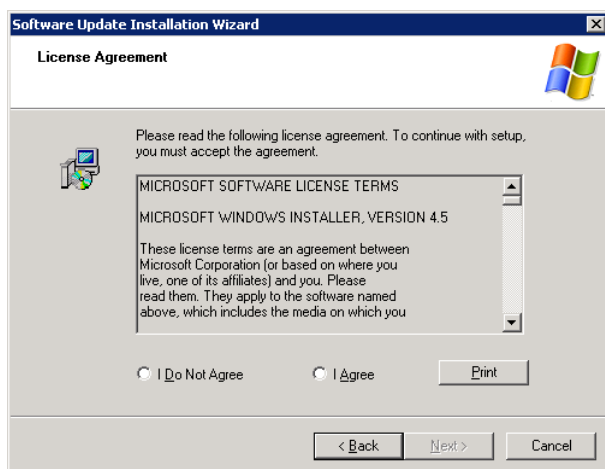
## 2 Installation Prerequisites

Select **Microsoft .NET Framework 3.5 SP1 Update for Windows 7 or Windows 8.1 and Windows Server 2008 R2 or Windows 2012 R2 for x64-based Systems (KB982526)** then click **OK**.

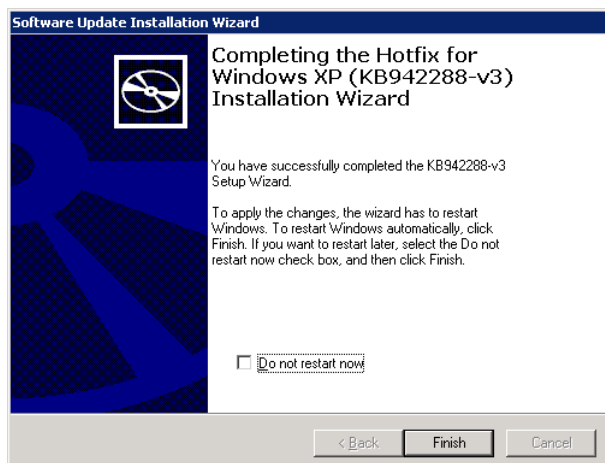


Click **Install Updates**.

### Windows Update



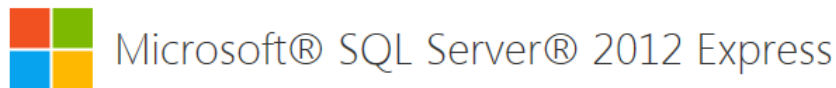
Select **I Agree**, then **Next**.



## 2.3 Microsoft SQL Server 2012 Express with Tools installation

### 2.3.1 Download

Download **Microsoft SQL Server 2012 Express with Tools** from <https://www.microsoft.com/en-us/download/details.aspx?id=29062>



Select Language:  ▼ [Download](#)

Microsoft® SQL Server® 2012 Express is a powerful and reliable free data management system that delivers a rich and reliable data store for lightweight Web Sites and desktop applications.

#### ⊖ Details

**Note:** There are multiple files available for this download. Once you click on the "Download" button, you will be prompted to select the files you need.

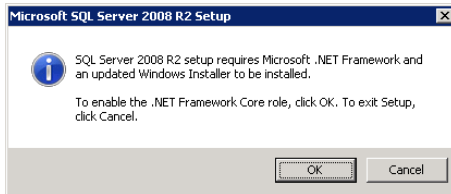
Version:	Date Published:
11.0.2100.60	5/14/2012
File Name:	File Size:
ENU\x64\SQLEXP_x64_ENU.exe	132.3 MB
ENU\x64\SQLEXPADV_x64_ENU.exe	1.3 GB
ENU\x64\SQLEXPRT_x64_ENU.exe	669.9 MB
ENU\x64\SqlLocalDB.MSI	33.0 MB
ENU\x64\SQLManagementStudio_x64_ENU.exe	600.2 MB
<a href="#">+ More</a>	

Select the appropriate version depending on your OS and download, e.g. **SQLEXPRT\_x64\_ENU.exe** for 64-bit operating systems.

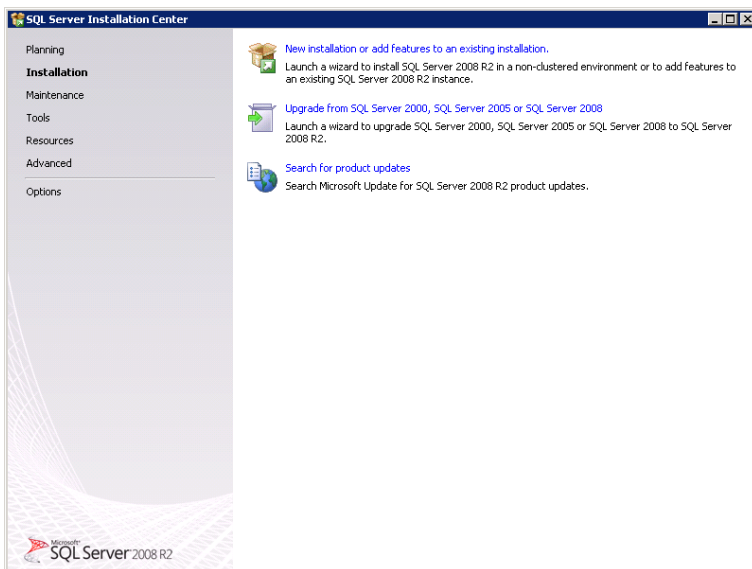
### 2.3.2 Installation on 64-bit Operating Systems

To install Microsoft SQL Server 2012 Express Edition with tools on 64-bit operating systems, double right click **SQLEXPRT\_x64\_ENU.exe** and select **Execute as administrator**.

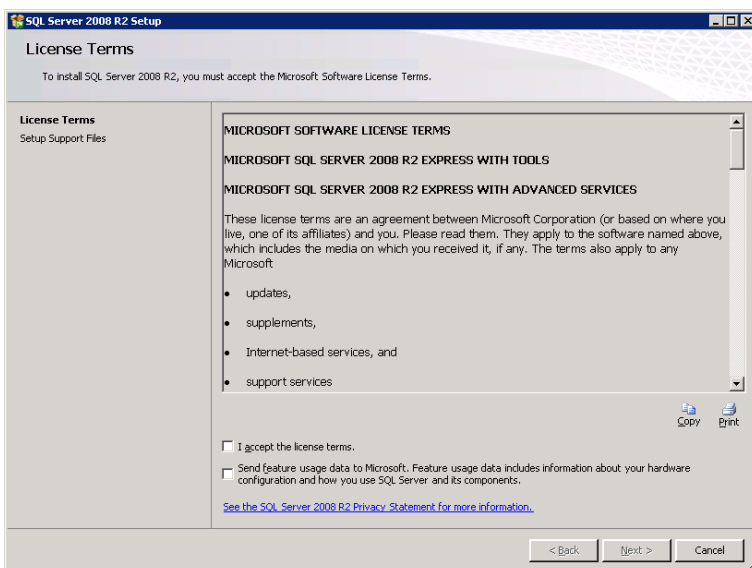
If the following message is shown click **OK**.



After a while the following window will be shown. Click **New installation or add features to an existing installation**.

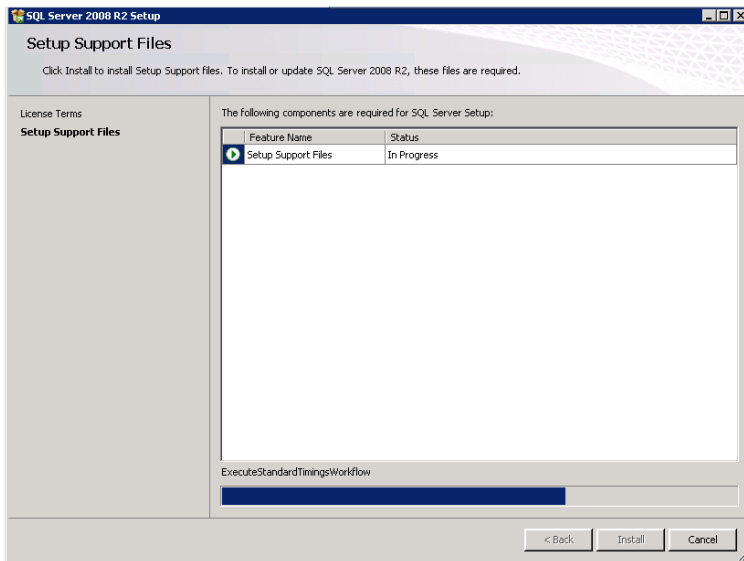


Activate the checkbox **I accept the license terms** and click **Next**.

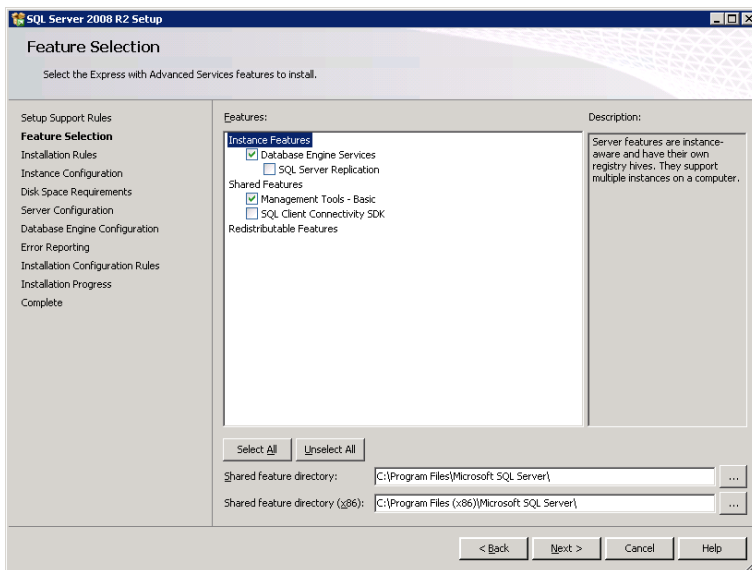


## 2 Installation Prerequisites

All required support files are installed automatically.

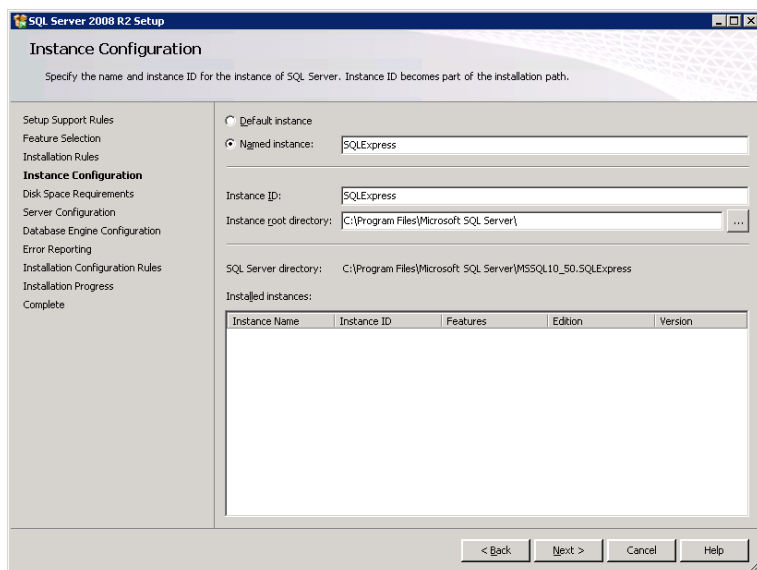


In the **Feature Selection** dialog tab, activate the checkboxes **Database Engine Services** and **Management Tools–Basic**, then click **Next**.

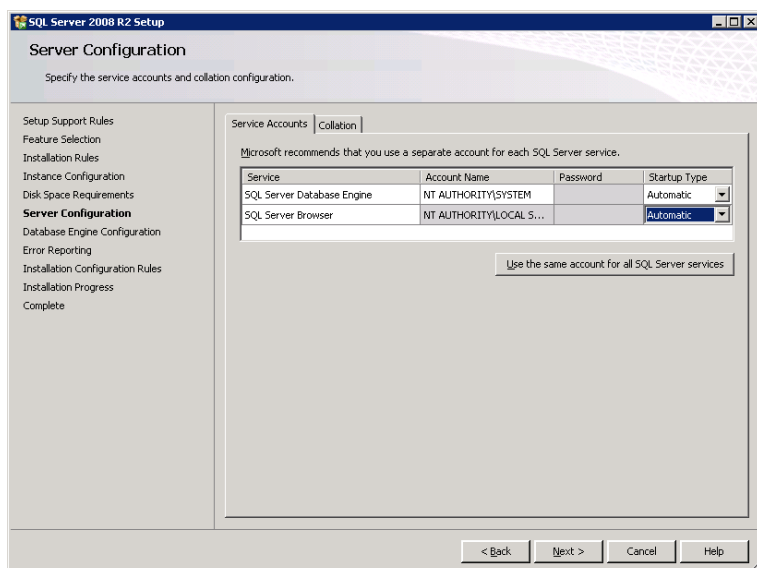


Click **Next**.

## 2 Installation Prerequisites



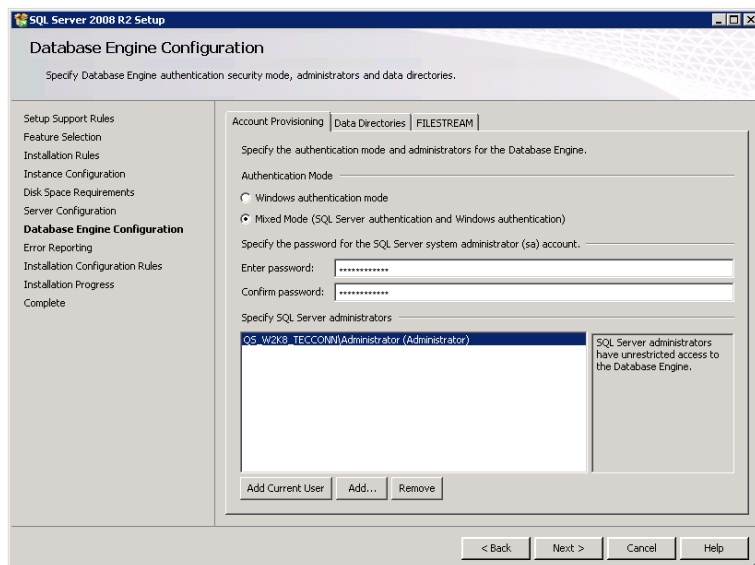
Select **NT AUTHORITY\SYSTEM** as the **account name** for the SQL Server Database Engine. Select **Automatic** as the **Startup Type** for your SQL Server Browser, then click on **Next**.



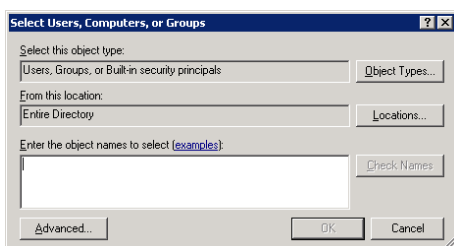
Select **Mixed Mode (SQL Server authentication and Windows authentication)**. Enter a secure password for the SQL-Server system administrator (sa) and make sure that you remember it later. Add at least one user in **Specify SQL Server administrators**. If you want to add the current user, click **Add Current User**. Afterwards click **Next**.

**Note:** These users will be able to login to the SQL Server where they can create a database connection to the TecLocal 4.0 MultiUser Database and fulfill administrative tasks. In addition, these users are needed for the TecLocal 4.0 MultiUser Database Installation - details see "3 TecLocal 4.0 MultiUser Database Installation".

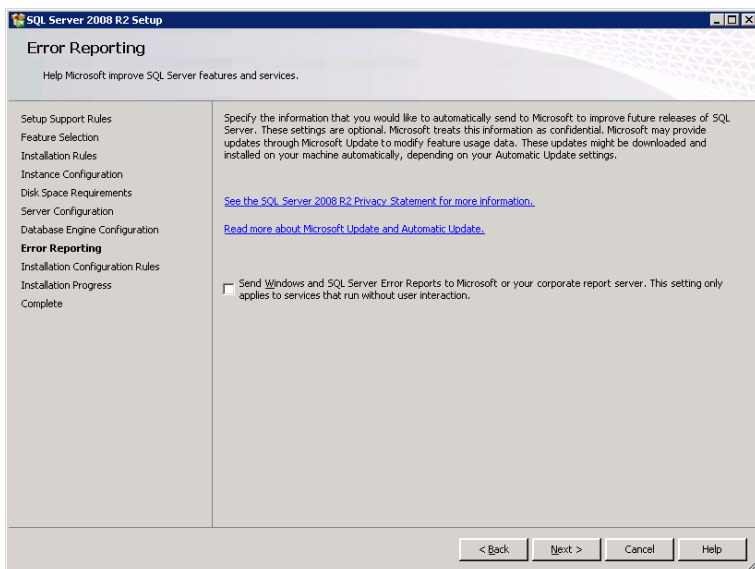
## 2 Installation Prerequisites



**Note:** To add more users, click on **Add...** in the main dialog. A sub dialog is displayed. Select the users you want to add. To return to the main dialog, click **OK** then **Next**.

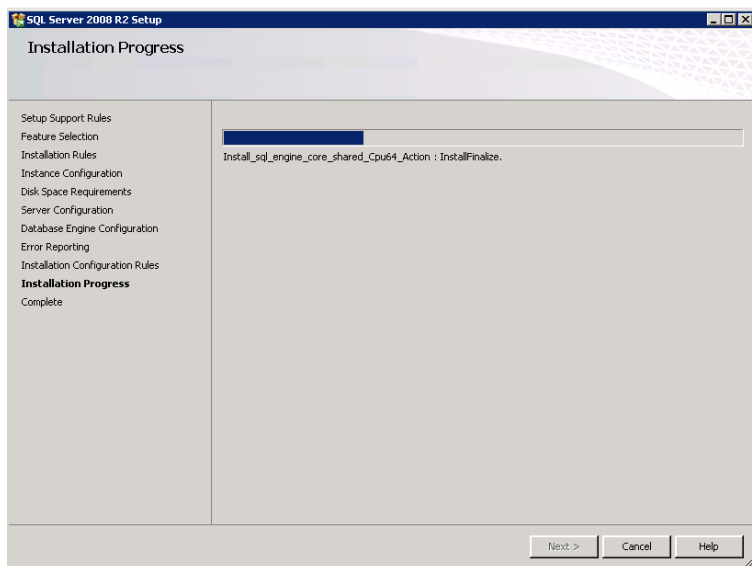


Click **Next**.

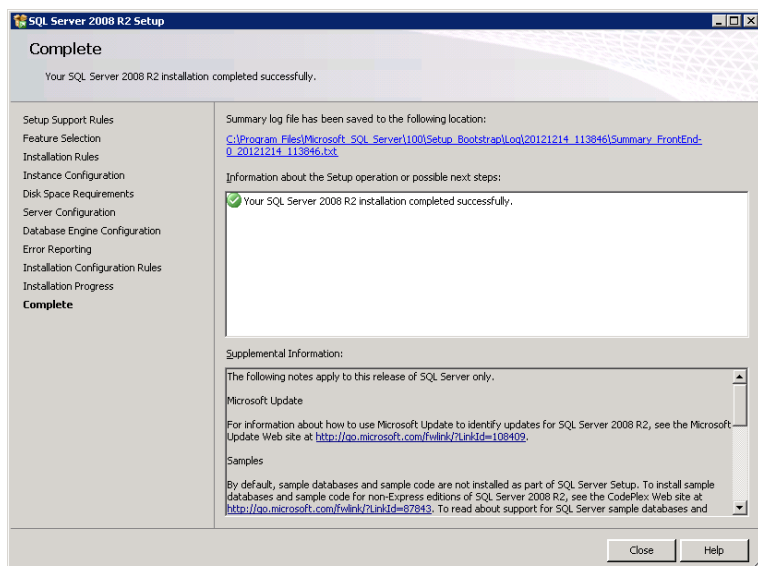


The installation process continues automatically.

## 2 Installation Prerequisites



Click **Close** to finish the installation.



Finally close the **SQL Server Installation Center**.

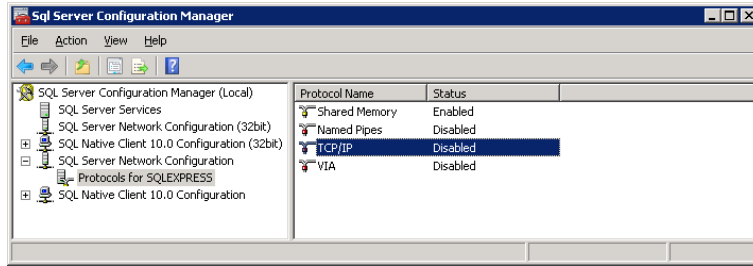
### 2.3.3 Completing the SQL Server 2012 Express Edition Installation

In order to install the TecLocal 4.0 Multiuser Database, TCP/IP for SQL Express must be enabled. To do this, carry out the following steps:

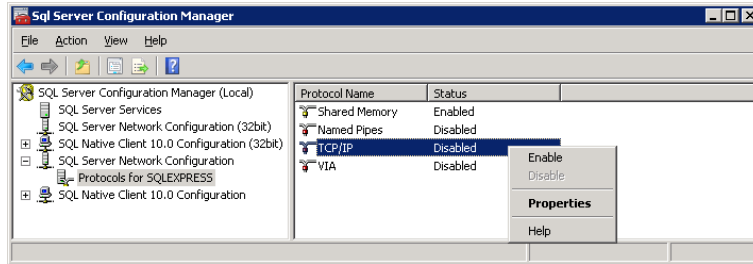
1. Open the **SQL Server Configuration Manager** via **Start** → **Microsoft SQL Server 2012** → **Configuration Tools**.
2. In the left panel of the **SQL Server Configuration Manager** expand the node **SQL Server Network Configuration**, then select **Protocols for SQLEXPRESS** and in the right panel select **TCP/IP**



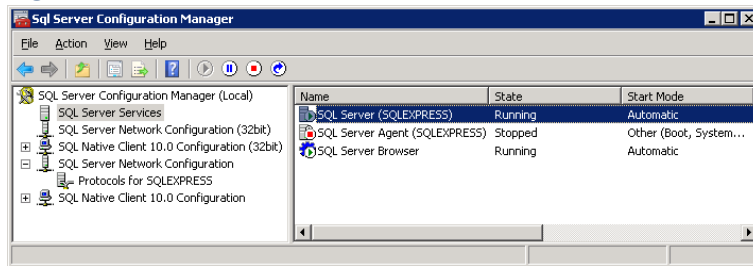
## 2 Installation Prerequisites



- Right click on TCP/IP and select Enable.

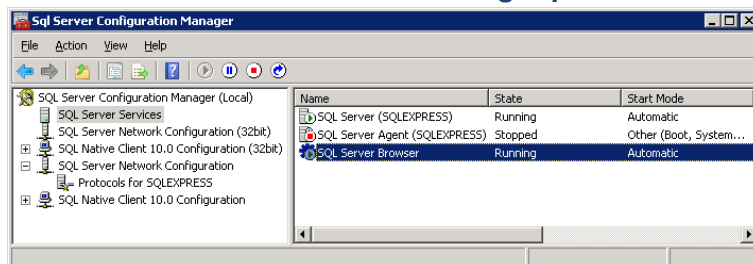


- Select **SQL Server Services** in the left panel and **SQL Server (SQLEXPRESS)** in the right panel



- Click  to restart the service.

- Select **SQL Server Browser** in the right panel.



- Click  to restart the service.

## 3 TecLocal 4.0 MultiUser Database Installation

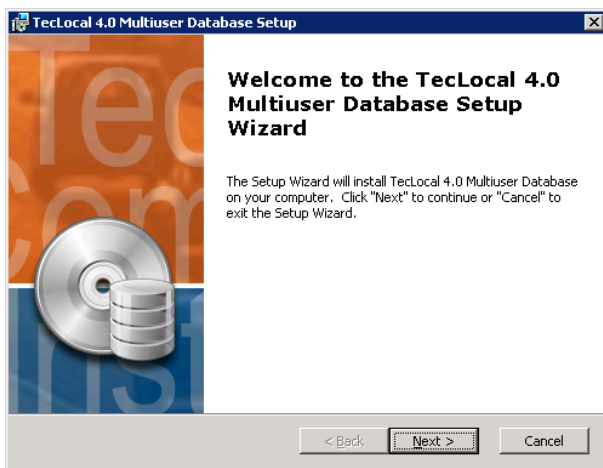
The MultiUser Database must be installed on the same machine where the SQL express database was installed previously. Maintenance application and automation services should preferably run on the same machine. Backup paths always refer to paths on the machine where SQL server is installed.

### 3.1 Installation with a new empty Database

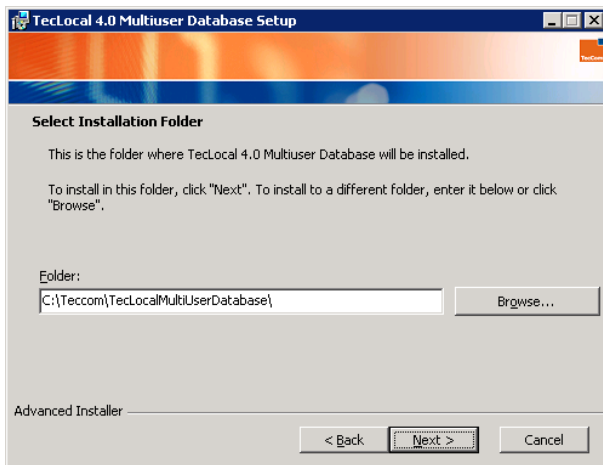
If you **don't have an existing TecLocal version** or if you **don't want to migrate** the application data from your existing TecLocal version, you will have to create a new empty database. To do so, please follow the steps detailed below.

**Note:** To migrate application data from an existing TecLocal version to the new database, please follow the instructions as described in chapter “**3.2 Installation using an existing MS Access Database**”.

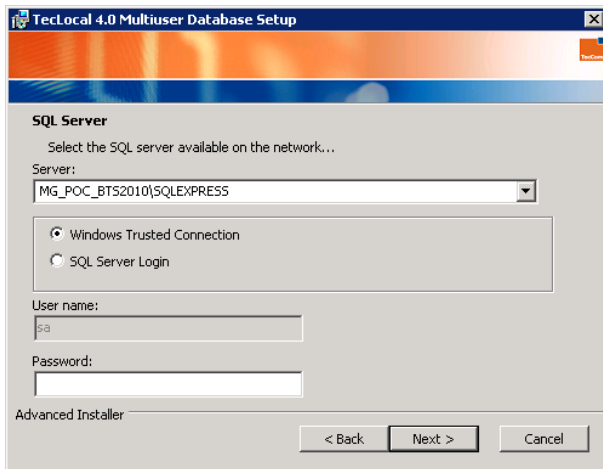
Double click the TecLocal 4.0 MultiUser Database setup file **TecLocalMultiUserDatabase.exe** then click **Next**.



Select the installation folder and click **Next** to continue.

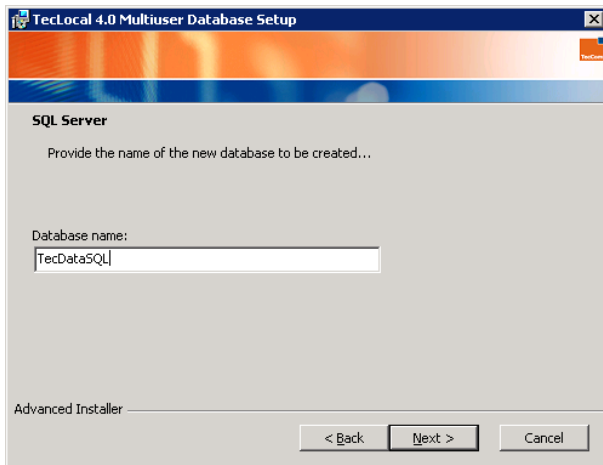


Select a **Server** and login method. If **Windows Trusted Connection** is selected, no further input is needed. If you select **SQL Server Login**, enter the username and provide the password you selected during the installation of SQL 2012 EXPRESS: Click **Next** after completing the above steps

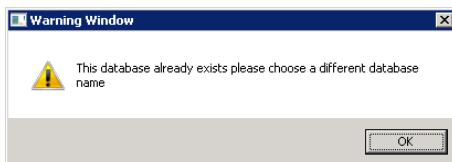


Enter a database name and click on **Next**.

**Important note:** Please make sure you memorize both server and database name when for TecLocal 4.0 clients.

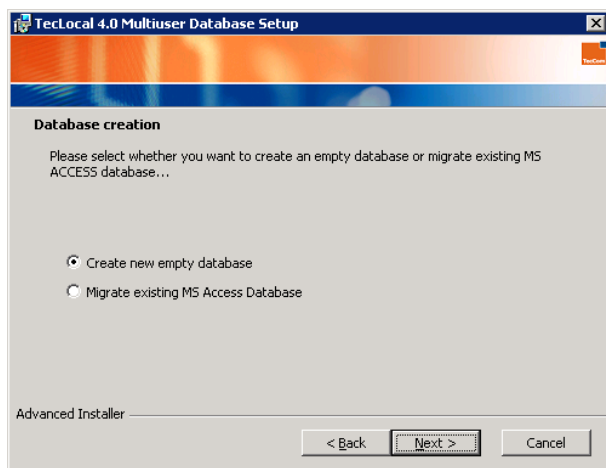


If the database name already exists/is taken, the following warning will be displayed. Click **OK**.

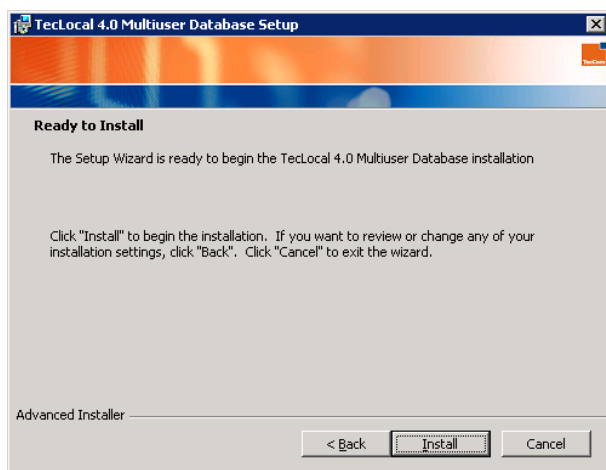


Select **Create new empty database**, and then click **Next**.

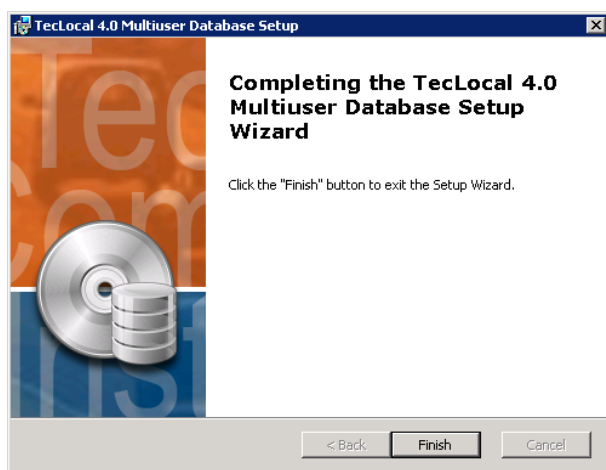
### 3 TecLocal 4.0 MultiUser Database Installation



Click **Install** to start the installation.



Click on **Finish** after the installation is complete.



An icon **Multiuser database maintenance administration** is automatically created on the desktop of the server.



When you double click this icon, the **TecLocal 4.0 MultiUser Database Administration Tool** starts up which allows you to administrate and maintain the new Microsoft SQL Express database used for TecLocal 4.0. Details about this administration tool can be found in the next chapter.

## 3.2 Installation using an existing MS Access Database

If you want to migrate application data of an **existing TecLocal version/installation** (which can also be located on another machine), you need to use the existing MS Access Database for your installation. To do so, follow the steps described in this chapter.

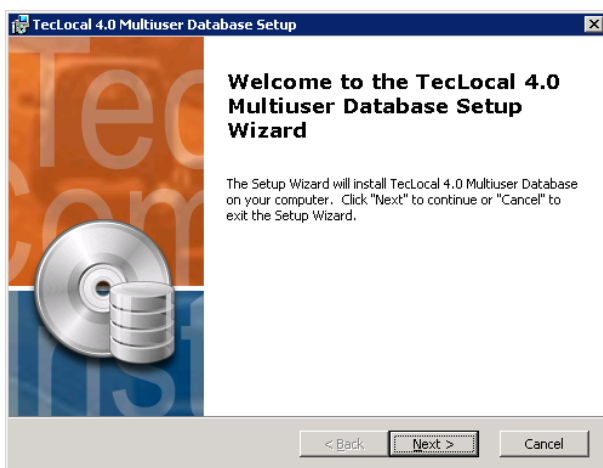
Please note that the **TecLocal version 3.0 Patch D** needs to be preinstalled.

Double click the TecLocal 4.0 MultiUser Database setup file **TecLocalMultiUserDatabase.exe**.

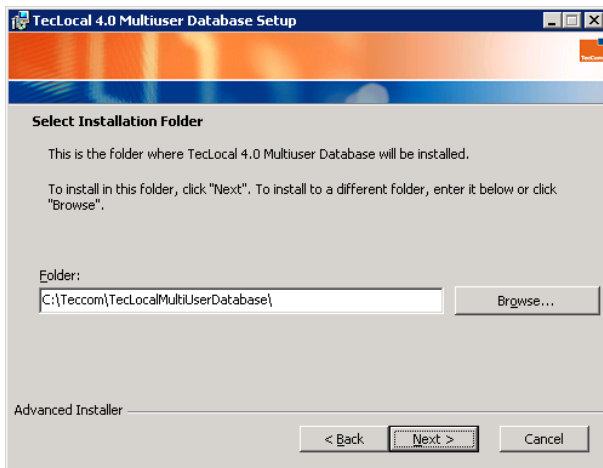
If a security warning appears, click on **Run**.



The Welcome Screen of the setup appears. Click **Next**.



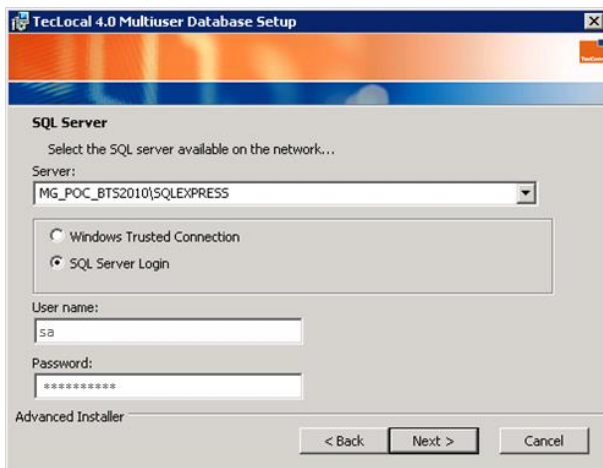
Select the installation folder and then click **Next** to continue.



Select the **Server** in the drop down list which is filled automatically.

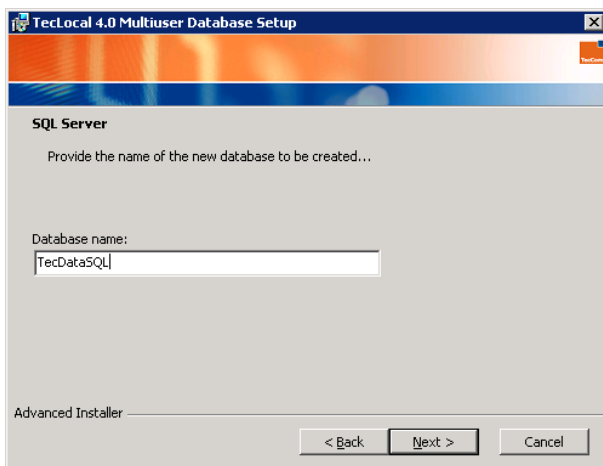
**Note:** If an ODBC Connect timeout occurs it can be ignored.

Select **SQL Server Login** as login method, enter the **username** (e.g sa) and the **password** you provided for the installation of SQL 2012 EXPRESS. Click **Next**.

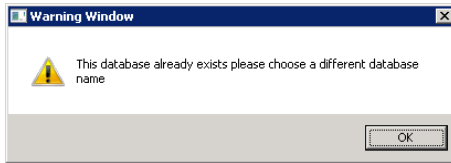


Enter a database name and click on **Next**.

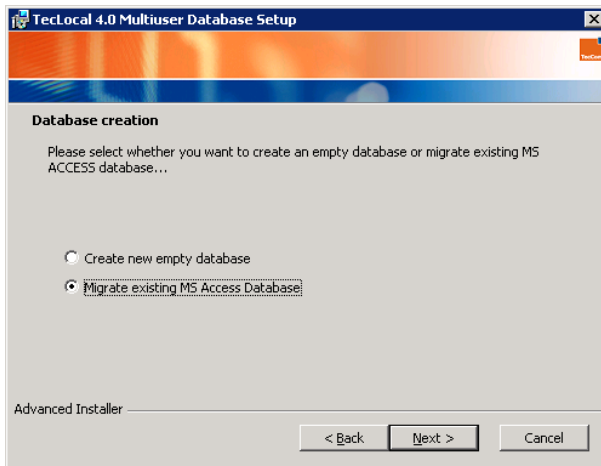
**Important note:** Make sure to memorize the server and database name when installing TecLocal 4.0 clients.



If the database name is already taken, click on **OK** to close the following warning:

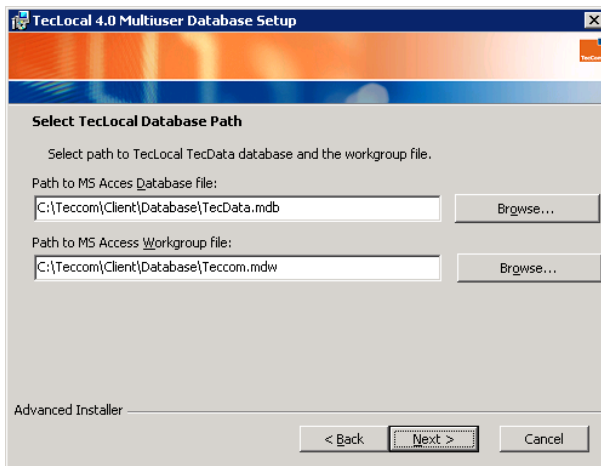


Select **Migrate existing MS Access Database**, and click **Next**.



Use the **Browse** buttons to select the path to MS Access Database file and MS Access Workgroup file, and click **Next**.

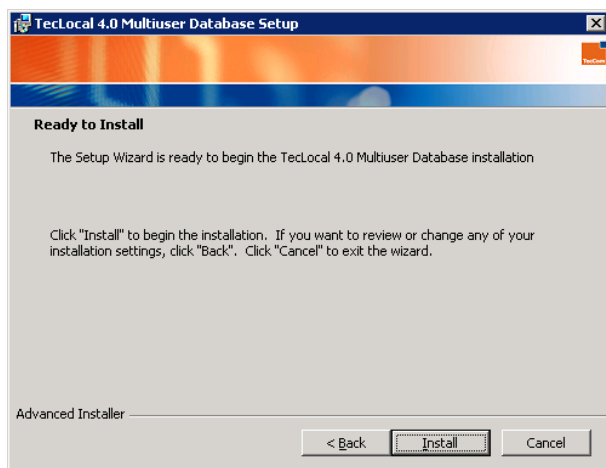
Please double-check that the path to the "MS Access Workgroup file" is correct!



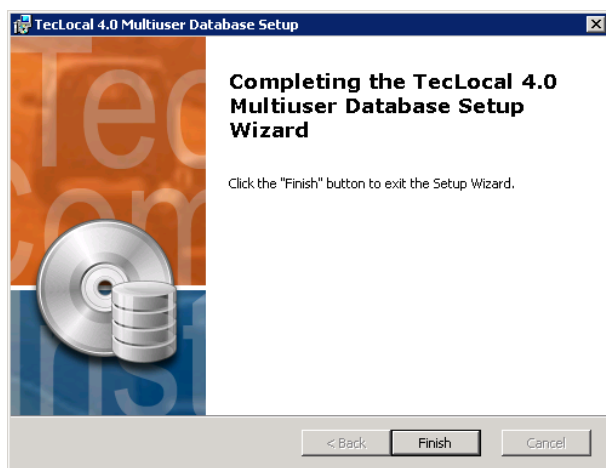
**Note:** If there is no TecCom.mdw (MS Access Workgroup file) and TecData.mdb (MS Access Database file) on the server, copy it from a machine where TecLocal 3.0 is running (installation folder ...\\Client\\Database) on the server.

Click **Install** to start the installation process.

### 3 TecLocal 4.0 MultiUser Database Installation



Click on **Finish** after the installation is complete.



An icon **Multiuser database maintenance administration** is automatically created on the desktop of the server.



If you click with the right mouse button on this icon and select **Run as administrator**, the **TecLocal 4.0 MultiUser Database Administration Tool** is started which allows you to administrate and maintain the new Microsoft SQL Express database used for TecLocal 4.0. Details about this administration tool can be found in the next chapter.



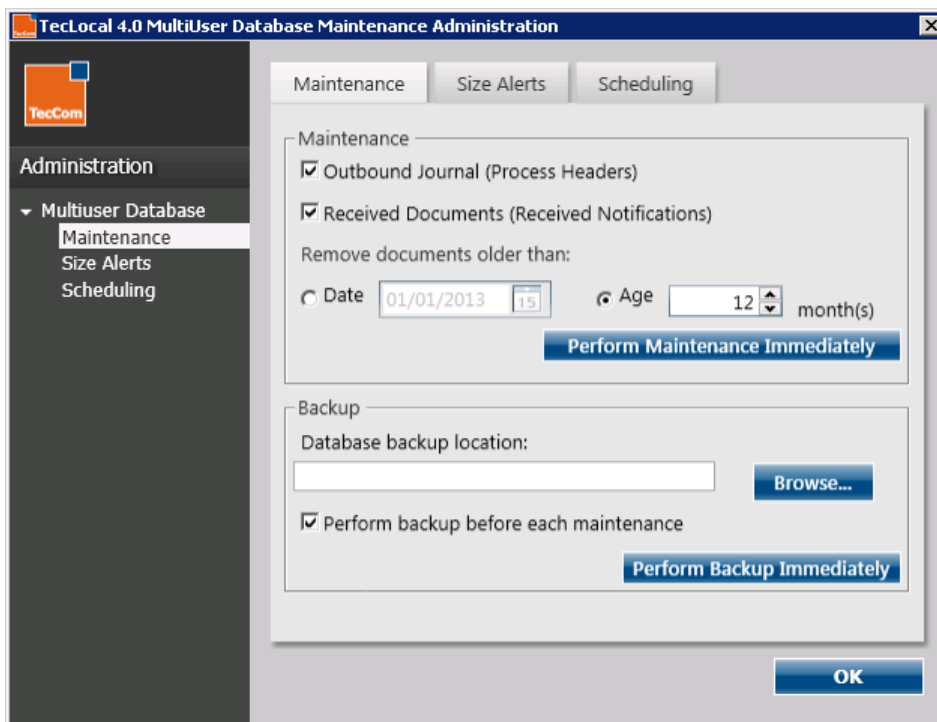
## 4 TecLocal 4.0 MultiUser Database Maintenance Administration

The following chapter will give you an overview of the MultiUser Database Maintenance Administration tool's main functionality. Since this new database used for TecLocal 4.0 is a free Microsoft SQL Express database, storage is limited to 10 GB requiring regular maintenance and administration (efforts) The MultiUser Database Administration tool represents an user-friendly and convenient means to achieve this.

Click with the right mouse button on the **Multiuser database maintenance administration** icon on the server's desktop and select **Run as administrator**:



### 4.1 Tab “Maintenance”



#### Area “Maintenance”

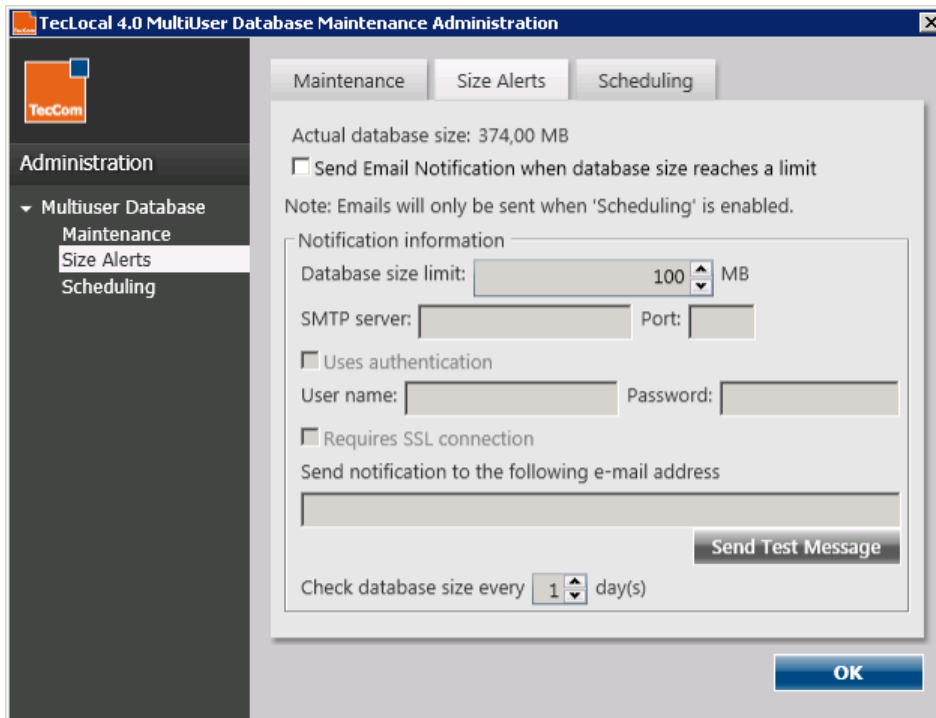
- Outbound Journal (Process Headers): check this option if you want the administration tool to remove documents contained in the Outbound Journal
- Received Documents (Received Notifications): check/select this option if you want the administrator to remove the documents contained in Received Documents
- Remove documents based on/according to:
  - Date: select this option if you want to remove documents by date; all documents created before the specified date will be removed.

- Age: select this option if you want to remove documents by age; the document with an age older than the value (in months) set in this option will be removed.
- Perform Backup Immediately: click this button to manually remove documents

### Area “Backup”

- Database backup location: use the “Browse” button to select the folder where the backup files will be stored. If no directory is selected in this field, backups will be stored in the following path [MS SQL Backup Folder]\TecLocalMultiUserDB\_XXXXXXXXXXXX.bak.
- Perform Backup before each maintenance: if this option is checked/selected, every time that maintenance is performed the application will make a backup of the database.  
Perform Backup Immediately: click this button/select this option to manually backup your database

## 4.2 Size Alerts



- Actual database size: displays actual size of the database in megabytes (MB).
- Send Email Notification when database size reaches a limit: check this option if you want to be notified when the database reaches a certain size; when it is checked the notification information form gets active.

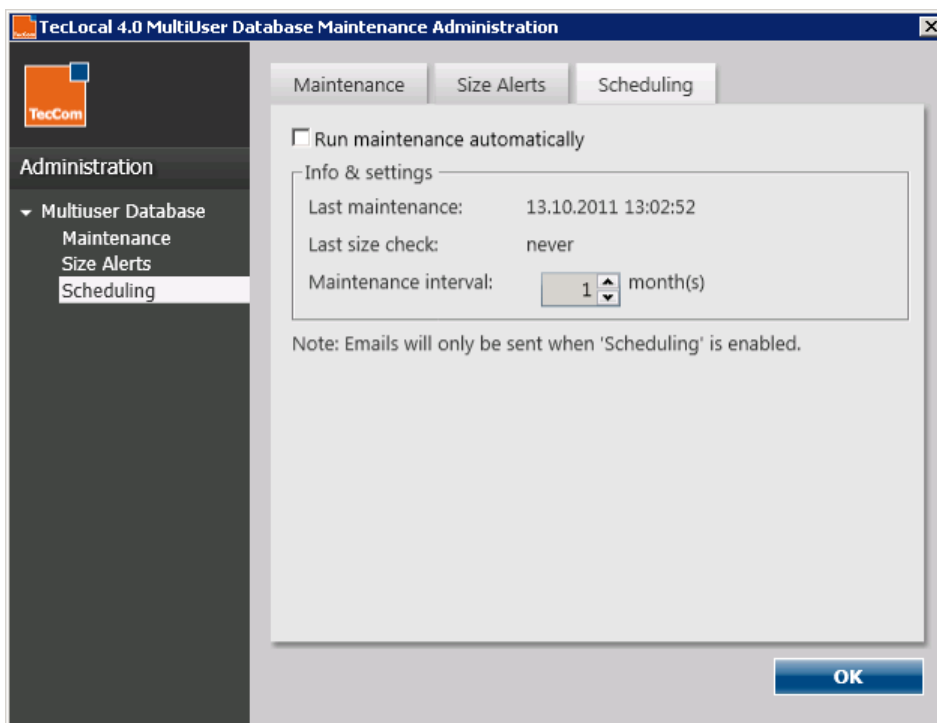
### Notification information

- Database size limit: when the database reaches the size specified in this option, the application will send a notification email.
- SMTP server: enter your SMTP server used to send the notification email.
- Port: type the port used to send the notification email.
  - Uses authentication: check this option if the SMTP server requires authentication  
User name: enter the user name for the SMTP server.
  - Password: enter the corresponding password.

- Requires SSL connection: check this option if a SSL connection is required to send the notification email.
- Send notification to the following e-mail address: enter the e-mail address where the notification email (from noreplay@tecalliance.net) will be send to.
- Send Test Message: click this button to test the notification information; the application will send a test email to the email address provided.
- Check database size every: set a specific time period (in days) in which the application will check the database size.

**Note:** If you don't know your SMTP server's access data it is also possible to configure your Windows Server 2008 OS to work as a SMTP server. For details contact your IT administrator.

### 4.3 Scheduling

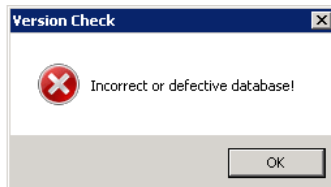


- Run maintenance automatically: check this option if you want maintenance to be performed automatically.
- Info & settings:
  - Last maintenance: displays the date and time when the last maintenance was performed.
  - Last size check: shows the date and time when the last size check was performed.
  - Maintenance interval: set the period of time in months when the automatic maintenance should be performed.

## 5 Trouble Shooting

### 5.1 Open Ports to connect TecLocal client with SQL databases

Even if access to the multiuser database has been configured correctly, you might still receive the following database error message **when you start TecLocal 4.0**.



This may be due to an active firewall between the TecLocal 4.0 client and the server with the SQL Express database containing the TecLocal application data. You might need to open TCP/IP ports **on the server side** to allow the connection.

(For details see <http://support.microsoft.com/kb/968872/de>)

The default UDP port for SQL Browser is 1434.

To open this port on the server you have to do the following:

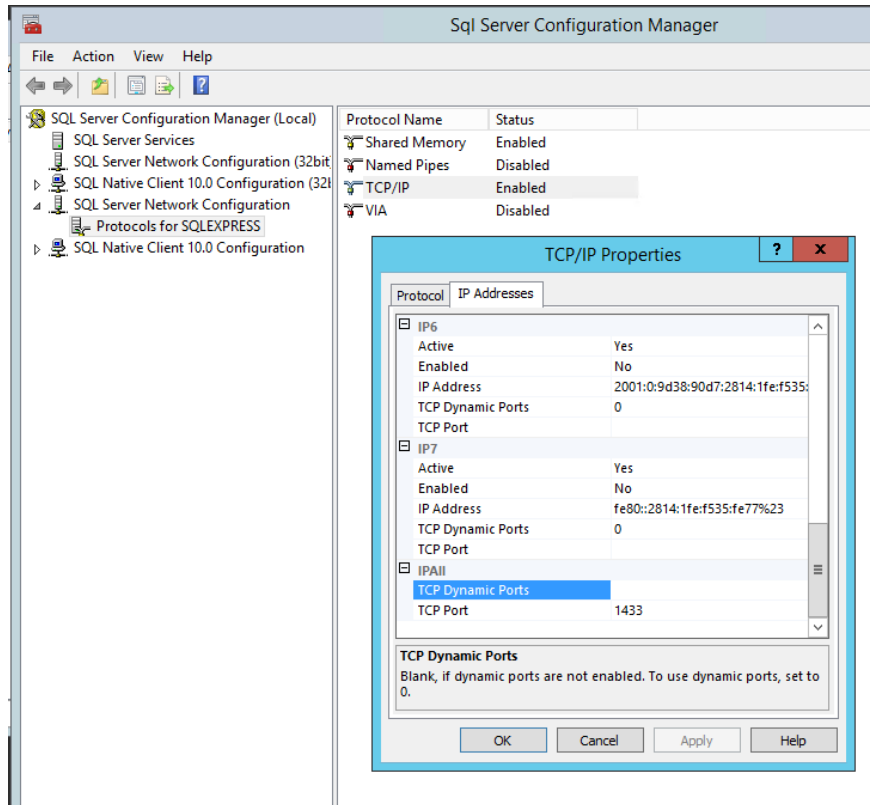
1. Open the **command line** (cmd.exe) on the server where the SQL Express database is running.
2. Enter the following command:  
**netsh firewall set portopening UDP 1434 "SQL-Browser"**
3. Close the command line and restart the TecLocal 4.0 client on the other machine.

The default TCP port for SQLEXPRESS is 1433.

If the TecLocal 4.0 client is still not able to connect to the SQL Express database you need to check if SQL Express uses a different TCP/IP port and open this port on your server as well. We recommend to use port 1433 for the SQL Server Express connections. There must be a rule for incoming traffic on this port, if a (Windows) firewall is active.

To do so, carry out the following steps:

1. On the server, launch the **SQL Server Configuration Manager via Start → Microsoft SQL Server 2012 → Configuration Tools**.
2. In the left panel of the **SQL Server Configuration Manager** expand the node **SQL Server Network Configuration**, then select **Protocols for SQLEXPRESS** and in the right panel select **TCP/IP**
3. Right click on TCP/IP and select **Properties**.
4. In the TCP/IP properties window, scroll down to **IP All** and blank the port number listed in **TCP Dynamic Ports**. This will disable the dynamic port usage. In the textfield below, enter **1433** as the **TCP Port**. Click **OK**.



5. Restart the SQL Server service by clicking **SQL Server Services** → **SQL Server (SQLEXPRESS)** → (right-click) → **Restart**
6. Close the **SQL Server Configuration Manager**.
7. Open **command line** (cmd.exe) on the server.
8. Enter the following command:  
**netsh firewall set portopening TCP 1433 "SQL-Server-Port"**
9. Close the command line and restart the TecLocal 4.0 client on the client machine.

## 5.2 TecCom Helpdesk

In case of problems using TecCom please turn to the TecCom Helpdesk:

Monday – Friday, 8 a.m. – 6 p.m. (CET)

Phone: +49 (0)180 2 TECCOM\*

+49 (0)180 2 83 22 66\*

+49 (0) 89 321216 127

Fax: +49 (0)89 321 216-100

Email: [support.muc@tecalliance.net](mailto:support.muc@tecalliance.net)

Visit us on the Internet at: [www.teccom.eu](http://www.teccom.eu) and [www.tecalliance.net](http://www.tecalliance.net)

\*0,06 € per call from a Germany based landline