

## SYGONIX

radiator thermostat HT100 BT

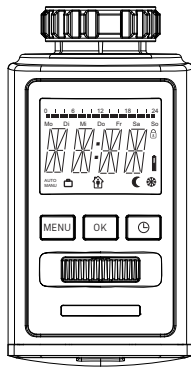
Art.-No. 1377980

### Attention

- For safety and licensing (CE) reasons, unauthorized conversion and/or modification of the product is prohibited. NEVER disassemble it.
- The product is not a toy, it does not belong in children's hands.
- The product is only suitable for indoor use, it must not get damp or wet.
- Do not carelessly leave packaging material lying around.
- It could be a dangerous toy for children.
- Be careful when using the product. Knocks, blows or even a fall from a low height can damage it.
- Should you have any questions that are not answered in this manual, please contact us or another professional.
- Keep batteries out of the reach of children. Do not let batteries lying around openly as there is the danger of them being swallowed by children or pets. If swallowed, consult a doctor immediately!
- Leaking or damaged batteries can cause burns on contact with skin, therefore use suitable protective gloves when handling them. Leaking battery fluids are chemically very aggressive. Objects or surfaces which come into contact with them, can sometimes be massively damaged. Keep batteries at a suitable location.
- Batteries must not be shorted, disassemble or thrown into the fire. Risk of explosion!
- Conventional non-rechargeable batteries cannot be recharged, Risk of explosion!
- Do not mix batteries with different state (e.g., full and half-full batteries. Always replace the whole set of batteries.
- When inserting the batteries pay attention to the correct polarity (Note: Plus / + and minus).

### Controls

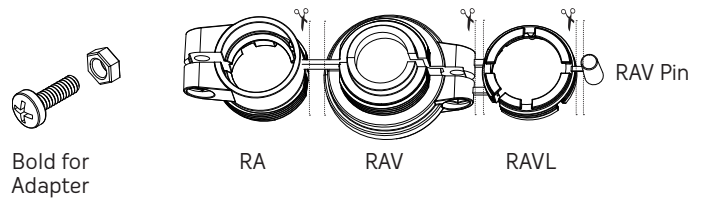
- Vacation Function
- Comfort Temperature
- Economy Temperature
- Open Window Function
- MANU/AUTO Modus



- Heating Time
- keylock
- Batterieverbrauch
- MENU Button: Main Menu
- OK Button: Confirmation
- Button: Timer function

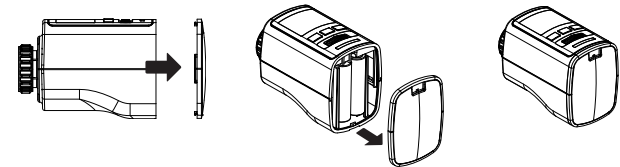
### Menu structure overview

MENU	WHEEL	MODE	PROG	TEMP	ZEIT	FENS	RES	URLA	ADAP	INST	OFFS	VERS
MODE	OK	AUTO/MANU										
PROG	OK	DAY 1	OK	↑	OK	☾						
TEMP	OK	↑ Comfort temperatur AUS/EIN	OK	☾ Set-back temperature AUS/EIN								
ZEIT	OK	year	OK	month	OK	day	OK	hours	OK	minute		
FENS	OK	sensibility	OK	time (minutes)								
RES	OK	Reset factory settings										
ADAP	OK	Actuator travel adjustment										
URLA	OK	Holiday period Profile										
INST	OK	Mounting position										
OFFS	OK	Temperature fluctuation -/+5°C										
VERS	OK	Software version										



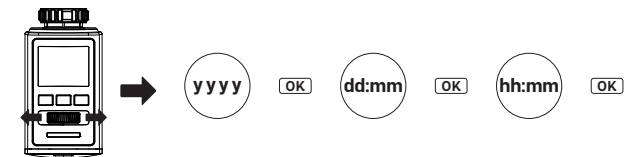
### Mounting

#### 1. Remove battery cover/Insert batteries

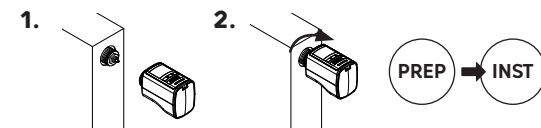


Pull the battery cover, in the recess on the underside of the housing, upwards. Insert two batteries of type AA/Mignon with correct polarity (observe plus / + and minus / -, see imprint in the battery compartment). Pay attention to the correct position of the batteries to avoid contact interference. Close the battery compartment again. Due to the lower output voltage of batteries (batteries = 1.5V, rechargeable batteries = 1.2V) there may be a very short period of operation. We therefore recommend to use high quality alkaline batteries for a long and safe operation.

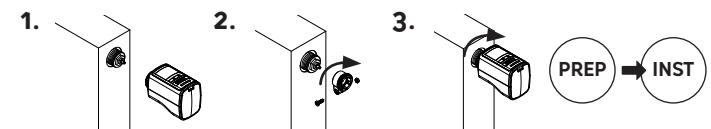
#### 2. Enter Date and Time



#### 3.a Mounting on the radiator without adapter Valve - Radiator Thermostat HT 100 BT



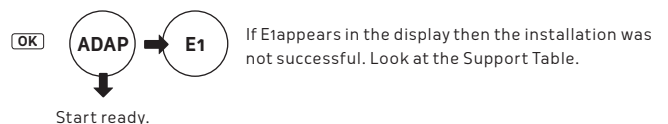
#### 3.b Mounting on the radiator with adapter Valve - Adapter - Radiator Thermostat HT100 BT



**No adapter is required for the following valves:** Heimeier, Junkers Landys+Gyr, MNG, Honeywell Braukmann, since these have thread dimensions of M30 x 1.5 mm. Adapters for Danfoss RAV (pin must be put on the valve tappet) Danfoss RA and Danfoss RAVL are enclosed.

**An adapter is required for the following valves:** Herz M28 x 1,5 mm, Comap M28 x 1,5 mm, Vaillant 30,5 mm, Oventrop M30 x 1,0 mm, Meges M38 x 1,5 mm, Ondal M38 x 1,5 mm, Giacomini 22,6 mm, Rosswainer M33 x 2,0 mm, Markaryd M28 x 1,0 mm, Ista M32 x 1,0 mm, Vama M28 x 1,0 mm, Pettinaroli M28 x 1,5 mm, T+A M28 x 1,5 mm oder Gampfer 1,2,6.

#### 4. Adapt



#### Basic Operating Modes

**MANU mode:** In the MANU Mode HT100 BT regulates to the set temperature by hand.

**AUTO Mode:** HT100 BT changes in the AUTO Mode according to the set Time program between two temperatures.

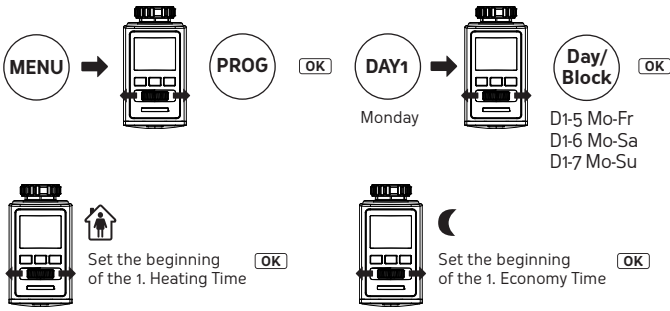
The heating and economy times can be specified via the adjustable time program. A maximum of 8 switch points (4 heating and 4 economy times) may be set per day. The Radiator Thermostat HT100 BT has the following factory settings:

**Heating time:** Heating to comfort temperature (factory setting: 1. heating time at 07:00 clock - 21 ° C)

**Saving time:** Reduction to economy temperature (factory setting: 1. saving time at 22:00 clock - 16 ° C)

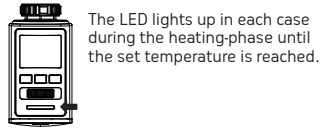
With the setting wheel a change in the room temperature is possible in the AUTO Mode at any time, this will remain until the next switching point. The process can be terminated prematurely by pressing the MENU button.

## Setting Individual Program

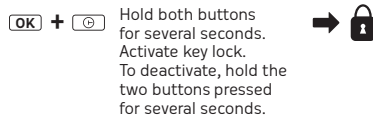


You can optionally enter additional heating and economy periods. If you do not want to make any further settings, confirm the display „--“ with OK.

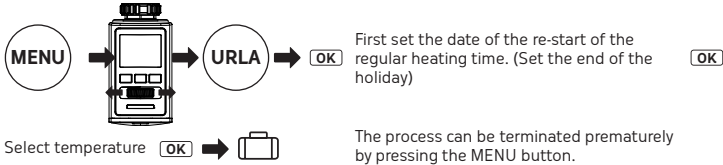
## LED



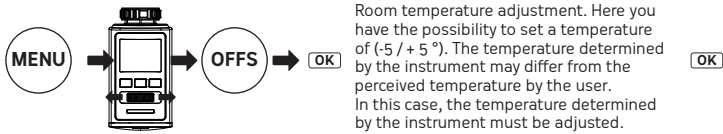
## keylock



## Setting Holidays



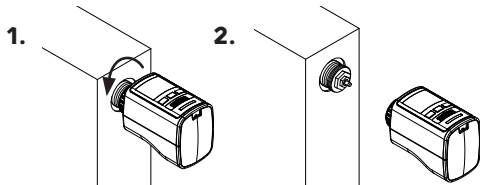
## Setting Offset



## Timer function

Here any temperature for a selected time period can be set. Press button, set the time for which the timer program is to be overridden. Confirm with OK. Set the desired temperature. Confirm with OK. A manual temperature change is then in the given period not possible, the setting wheel is locked. By pressing the Menu button, the lock-up can be released.

## Dismantling



In order to disassemble the Radiator Thermostat HT100 BT set to position ON, for this turn the setting wheel beyond the highest temperature of 28 °C until ON appears in the display. Wait briefly before loosening the screw connection. Then pull off the Radiator Thermostat HT100 BT from the valve.

## Operation via App

The app can be found in the App Store/Google Play Store for free under: **Sygonix HT100BT**. Follow the menu structure of the app. Initial start-up: PIN 000 000



## Hilfe

Problem	Cause	Solution
	Batteries are low	Change batteries
Radiator is not getting warm.	Boiler water temperature O.K.? Valve does not open, after Summer heating pause-calcified?	Correct water temperature of the boiler Take off Radiator Thermostat HT 100 BT Move by hand the valve tappets back and forth several times.
Radiator is not cooling down.	Valve does not close completely. Possibly the closing point of your your valve seat has moved.	EAdapt again (see "Adaptation") Repeatedly move valve tappets by hand - perhaps an adaptation is not possible because your valve may be calcified, or the seal does no longer fulfill its function.
Thrust piece falls out. (This may also cause an E1 error!)	Due to an endless thread the thrust piece mounted on the bottom may fall out when the controller was not applied on the valve.	Insert thrust piece. Adapt the device via the <b>MEN</b> point, or by removing and re-inserting the batteries. Now, the endless thread rotates and tightens the thrust piece firmly. Attach to the radiator and adapt again.
<b>E1-E3 By pressing any button the fault indicator disappears from the display and the adaptation restarts!</b>		
<b>E1</b>	No adaptation possible. Radiator Thermostat HT100 BT not mounted on radiators.	Is the device correctly mounted on the radiator? Mount Radiator Thermostat HT 100 BT.
<b>E2</b>	Valve lift too short or Battery power too weak.	Open and close valve tappets by hand several times or install new batteries.
<b>E3</b>	No valve movement possible.	Do valve tappets move freely?

## Declaration of Conformity

Hereby, Conrad Electronic SE, Klaus-Conrad-Straße 1, D-92240 Hirschau declares, that this product is in compliance with the essential requirements and other relevant provisions of Directive 1999/5/EC. The Declaration of Conformity for this product can be found at [www.conrad.com](http://www.conrad.com)

## Advice on environmental protection:

From the date of implementation of European guidelines 2002/96/EC and 2006/66/EC, into national law, the following applies: Electric and electronic devices and batteries may not be disposed of in household waste. The consumer is obliged to return electric and electronic devices and batteries to the public collection points established for them or to the point of sale. The particulars of this are regulated by the applicable state laws. The symbol on the product, operation instructions or packaging points to these provisions. You make an important contribution to the protection of the environment by reusing or recycling old equipment/batteries or making use of them in other ways.

## Guarantee

For damages caused by failure to observe this Instruction Manual, the warranty/guarantee is voided! For consequential damages we assume no liability! For material or personal damage caused by improper handling or failure to observe the safety information, we assume no liability! In such cases, the warranty/guarantee is voided!

## Maintenance and Cleaning

Maintenance or repair may only be performed by a specialist or specialist workshop. There are no serviceable components for you inside the product, therefore, never open/disassemble it (except for the battery change as described in this manual). Never use aggressive cleaning agents, rubbing alcohol or other chemical solutions as they may cause damage to the housing or even impair its operational functions.

## Technical Specifications

Power supply:	2 AA batteries / Mignon
Factory settings:	Comfort temperature: 21 °C Economy temperature: 16 °C 1. Heating time: Start 7:00 o'clock 1. Economy Time: Start 22:00 o'clock 4 heating times, 4 economy times
Switching points:	Yes, activation at temperature below +6 °C
Frost protection function:	Yes, valve movement 1x per week
Calcification protection:	Yes
Window function:	Automatic / Manual
Modes:	80 x 70 x 52 mm (W x H x D)
Dimensions:	

sygonix®  
distributed by  
Conrad Electronic SE  
Klaus-Conrad-Str. 1  
D-92240 Hirschau