



my
machine



NESPRESSO®

Nespresso, an exclusive system creating the perfect Espresso, time after time.

All Nespresso machines are equipped with a patented extraction system that guarantees up to 19 bar pressure. Each parameter has been calculated with great precision to ensure that all the aromas from each Grand Cru can be extracted, to give the coffee body and create an exceptionally thick and smooth crema.

CONTENT



Please read the instructions and safety precautions before operating the appliance.

Safety precautions	4– 5	Reset to factory settings	13
Overview	6	Machine cleaning	13
Clip/Unclip your side panels	7	Panels cleaning	13
To unclip your panels with the dedicated Nespresso key	8	Descaling	14–15
First use	9	Troubleshooting	16
Coffee preparation	10	Specifications	16
Energy saving concept and water level detection	11	Contact the Nespresso Club	16
Programming the water volume	11	Disposal and environmental protection	17
Emptying the system before a period of non-use and for frost protection, or before a repair	12	Ecolaboration: www.ecolaboration.com	17
		Warranty	18

SAFETY PRECAUTIONS



⚠ CAUTION: the safety precautions are part of the appliance. Read them carefully before using your new appliance for the first time. Keep them in a place where you can find and refer to them later on.

⚠ CAUTION: when you see this sign, please refer to the safety precautions to avoid possible harm and damage.

ℹ INFORMATION: when you see this sign, please take note of the advice for the correct and safe usage of your appliance.

- The appliance is intended to prepare beverages according to these instructions.
- Do not use the appliance for other than its intended use.
- This appliance has been designed for indoor and non-extreme temperature conditions use only.

- Protect the appliance from direct sunlight effect, prolonged water splash and humidity.
- This appliance is intended to be used in households and similar applications only such as: staff kitchen areas in shops, offices and other working environments, farm houses; by clients in hotels, motels and other residential environments; bed and breakfast type environments.
- This appliance may be used by children of at least 8 years of age, as long as they are supervised and have been given instructions about using the appliance safely and are fully aware of the dangers involved. Cleaning and user maintenance shall not be made by children unless they are older than 8 and they are supervised by an adult.
- Keep the appliance and its cord out of reach of children under 8 years of age.
- This appliance may be used by persons with reduced physical, sensory or mental capabilities, or whose experience or knowledge is not sufficient, provided they are supervised or have received instruction to use the device safely and

understand the dangers.

- Children shall not use the device as a toy.
- The manufacturer accepts no responsibility and the warranty will not apply for any commercial use, inappropriate handling or use of the appliance, any damage resulting from use for other purposes, faulty operation, non-professionals' repair or failure to comply with the instructions.

Avoid risk of fatal electric shock and fire.

- In case of an emergency: immediately remove the plug from the power socket.
- Only plug the appliance into suitable, easily accessible, earthed mains connections. Make sure that the voltage of the power source is the same as that specified on the rating plate. The use of an incorrect connection voids the warranty.

The appliance must only be connected after installation.

- Do not pull the cord over sharp edges, clamp it or allow it to hang down.

- Keep the cord away from heat and damp.
- If the supply cord is damaged, it must be replaced by the manufacturer, its service agent or similarly qualified persons, in order to avoid all risks.
- If the cord is damaged, do not operate the appliance.
- Return the appliance to the *Nespresso* Club or to a *Nespresso* authorized representative.
- If an extension cord is required, use only an earthed cord with a conductor cross-section of at least 1.5 mm² or matching input power.
- To avoid hazardous damage, never place the appliance on or beside hot surfaces such as radiators, stoves, ovens, gas burners, open flame, or similar.
- Always place it on a horizontal, stable and even surface. The surface must be resistant to heat and fluids, like water, coffee, descaler or similar.
- Disconnect the appliance from the mains when not in use for a long period. Disconnect by pulling out the plug and not by pulling the cord itself or the cord

SAFETY PRECAUTIONS

- may become damaged.
- Before cleaning and servicing, remove the plug from the mains socket and let the appliance cool down.
- Never touch the cord with wet hands.
- Never immerse the appliance or part of it in water or other liquid.
- Never put the appliance or part of it in a dishwasher.
- Electricity and water together is dangerous and can lead to fatal electrical shocks.
- Do not open the appliance. Hazardous voltage inside!
- Do not put anything into any openings. Doing so may cause fire or electrical shock!

Avoid possible harm when operating the appliance.

- Never leave the appliance unattended during operation.
- Do not use the appliance if it is damaged or not operating perfectly. Immediately remove the plug from the power socket. Contact the *Nespresso* Club or *Nespresso* authorized representative for

- examination, repair or adjustment.
- This machine has been designed to be used with side panels, do not use it without.
- A damaged appliance can cause electrical shocks, burns and fire.
- Always completely close the lever and never lift it during operation. Scalding may occur.
- Do not put fingers under coffee outlet, risk of scalding.
- Do not put fingers into capsule compartment or the capsule shaft. Danger of injury!
- Water could flow around a capsule when not perforated by the blades and damage the appliance.
- Never use a damaged or deformed capsule. If a capsule is blocked in the capsule compartment, turn the machine off and unplug it before any operation. Call the *Nespresso* Club or *Nespresso* authorized representative.
- Fill the water tank only with fresh and potable water.
- Empty water tank if the appliance will not be used for an extended time

- (holidays, etc.).
- Replace water in water tank when the appliance is not operated for a weekend or a similar period of time.
- Do not use the appliance without the drip tray and drip grid to avoid spilling any liquid on surrounding surfaces.
- Do not use any strong cleaning agent or solvent cleaner. Use a damp cloth and mild cleaning agent to clean the surface of the appliance.
- To clean machine, use only clean cleaning tools.
- When unpacking the machine, remove the plastic film and dispose.
- This appliance is designed for *Nespresso* coffee capsules available exclusively through the *Nespresso* Club or your *Nespresso* authorized representative. *Nespresso* quality is only guaranteed when *Nespresso* capsules are used in *Nespresso* appliances.
- All *Nespresso* appliances pass stringent controls. Reliability tests under practical conditions are performed randomly on selected units. This can show traces of any previous use.

- *Nespresso* reserves the right to change instructions without prior notice.

⚠ CAUTION: to prevent damage to the appliance do not use alkaline cleaning agents when cleaning, use a soft cloth and a mild agent.

Descaling

- *Nespresso* descaling agent, when used correctly, helps ensure the proper functioning of your machine over its lifetime and that your coffee experience is as perfect as the first day. For the correct amount and procedure to follow, consult the user manual included in the *Nespresso* descaling kit.

SAVE THESE INSTRUCTIONS

Pass them on to any subsequent user. This instruction manual is also available as a PDF at [nespresso.com](https://www.nespresso.com)

OVERVIEW

Packaging content



Coffee machine



16 capsule set



«Welcome to Nespresso» folder»



Quick Start Guide



One set of additional side panels



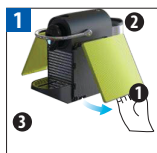
Nespresso Key

- 1 Drip tray
- 2 Drip grid + cup support
- 3 Capsule container for 9 – 11 used capsules
- 4 Coffee outlet
- 5 Lever
- 6 Espresso button (small cup)
- 7 Lungo button (large cup)
- 8 ON/OFF button
- 9 Water tank lid
- 10 Water tank
- 11 One set of exchangeable side panels
- 12 Nespresso key



CLIP/UNCLIP YOUR SIDE PANELS

i NOTE: the machine side panels has been designed to be easily clipped and unclipped without a specific tool. These panels are designed for the *Nespresso Pixie Clips* machine.



Unplug the machine and remove the water tank and maintenance unit.



Take the Pixie Clips machine as shown in the picture.



Push with the thumb and pull with the other hand to unclip your side panel as shown in the picture.



Position the new side panel, arrows pointing up.



Clip the new side panel as shown in the picture.
Ensure the panel is properly secured.



Come and discover a wide range of side panels to style your machine in **your Nespresso Boutiques** or online at nespresso.com

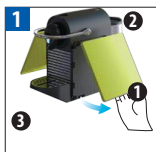


i NOTE: an additional set of panels is offered with your machine.

⚠ CAUTION: do not change the panels when the machine is hot (wait 10 minutes after the last brewing).

TO UNCLIP YOUR PANELS WITH THE DEDICATED *NESPRESSO* KEY

NOTE: these panels are designed for *Nespresso* Pixie Clips machine.



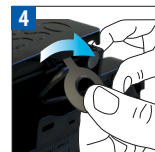
Unplug the machine and remove the water tank and maintenance unit.



Place the machine on the side on a clean and smooth surface to avoid damaging your panel.



Use the *Nespresso* key in the four holes to unclip the panels.



Unclip the panel by rotating the *Nespresso* key as shown in the picture.



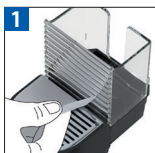
Remove the panel.

NOTE: use only the *Nespresso* key to unclip your panels.

CAUTION: do not change the panels when the machine is hot (wait 10 minutes after the last brewing).

FIRST USE

⚠ First read the safety precautions to avoid risks of fatal electrical shock and fire



Remove the plastic film from the drip grid.



Remove the water tank and capsule container. Adjust the cable length and store the excess under the machine.



Insert the remaining cable in the cable guide under the machine and put the machine in the upright position.



Plug the machine into the mains.



The water tank can be carried by its cover.



Rinse the water tank before filling with potable water.



Switch the machine on. Blinking light of both coffee buttons and the capsule container: heating up for approximately 25 seconds. Steady light: ready.



Place a container under coffee outlet and press the Lungo button to rinse the machine. Repeat three times.

COFFEE PREPARATION



Rinse then fill the water tank with potable water. The water tank can be carried by its cover.



Switch the machine on. Blinking light: heating up for approximately 25 seconds. Steady light: ready.



Lift the lever completely and insert a *Nespresso* capsule.



Close the lever and place a cup under the coffee outlet.

⚠ Never lift lever during operation and refer to the safety precautions to avoid possible harm when operating the appliance



During heat up, you can press the coffee button when it's still blinking. The coffee will then flow automatically when the machine is ready.



For a Latte Macchiato glass fold the cup support into the upright position. It will automatically fall down again when removing the glass to avoid any drips falling on to your kitchen surfaces.



i Press the Espresso (40 ml) or the Lungo (110 ml) button. Preparation will stop automatically. To stop the coffee flow or top up your coffee, press again.



Take the cup. Lift and close the lever to eject the capsule into the used capsule container.

ENERGY SAVING CONCEPT AND WATER LEVEL DETECTION



To save energy, switch the machine off when not in use. Automatic power off: the machine will stop automatically after 9 minutes of non use.



To increase automatic power off from 9 to 30 minutes: switch the machine off, press the Espresso and Lungo buttons simultaneously then press the ON/OFF button.



Red backlight lights up: water tank is empty. Refill the water tank with potable water. Empty and rinse the used capsule container and the drip tray.

PROGRAMMING THE WATER VOLUME



Fill the water tank and insert a capsule.



Press and hold the Espresso or Lungo button.



Release the button once the desired volume is served.



Water volume level is now stored.

EMPTYING THE SYSTEM BEFORE A PERIOD OF NON-USE, FOR FROST PROTECTION OR BEFORE A REPAIR



Switch the machine off.



Remove the water tank. Close the Lever. Place a container under the coffee outlet.



Press and hold the Espresso button and switch the machine on. Wait until no more water comes out.



Machine switches off automatically.

RESET TO FACTORY SETTINGS




Switch the machine off.

 Espresso cup: 40 ml; Lungo cup: 110 ml.



Press and hold the Lungo button and switch the machine on.

MACHINE CLEANING

 Do not use any strong cleaning agent or solvent cleaner. Do not put in a dishwasher.

 Never immerse the appliance or part of it in water.

Clean the coffee outlet regularly with a damp cloth.



To assemble the cup support and the drip tray:
take off the grid, place them side by side and clip
the drip tray to the cup support.

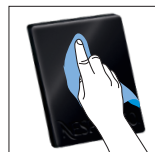
PANELS CLEANING

CAUTION

Do not use any cleaning agent or solvent cleaner to clean your panels.
Do not put the side panels in the dishwasher.

Risk of stains or scratches.

Use only a clean damp cloth to clean your panels.



DESCALING

 Duration approximately 15 minutes

 Read the safety precautions on the descaling package and refer to the table for the frequency of use (see page 15)



Remove the capsule and close the lever.

 **CAUTION:**
please ensure to remove
your panels before starting a
descaling.



Empty the drip tray and the used capsule container.



Fill the water tank with 0.5 L of water and add the *Nespresso* descaling liquid.



Place a container (minimum volume: 0.6 L) under the coffee outlet.



Switch the machine on.



Blinking light: heating up. Steady light: ready.



Press both coffee buttons simultaneously for three seconds. They will start blinking.



Press the Lungo button and wait until the water tank is empty.



Refill the water tank with the used descaling solution collected in the container and repeat step 8.



Empty and rinse the water tank. Fill it with potable water.



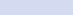
When ready, press the Lungo button to rinse machine.



To exit the descaling mode, press both buttons simultaneously for one second. The machine is now ready for use.

⚠ CAUTION

The descaling solution can be harmful. Avoid contact with eyes, skin and surfaces. We recommend the *Nespresso* descaling kit available from the *Nespresso* Club as it is specifically adapted to your machine. Do not use other products (such as vinegar) that would affect the taste of the coffee. The following table will indicate the descaling frequency required for the optimum performance of your machine, based on water hardness. For any additional questions you may have regarding descaling, please contact your *Nespresso* Club.








Water hardness:			Descal after:		fH	French grade
fH	dH	CaCO ₃	Cups (40ml) ↑		dH	German grade
36	20	360 mg/l		1000		
18	10	180 mg/l		2000		CaCO ₃ calcium carbonate
0	0	0 mg/l		4000		

Nespresso descaling kit:
Ref. 3035/CBU-2

TROUBLESHOOTING

No light.	→ The machine has switched off automatically; press ON/OFF button. → Check the mains: plug, voltage, fuse.
No coffee, no water.	→ Check the water tank, if empty, fill with potable water. Descale it if necessary. → Lift the lever. Press one coffee button and wait until water comes out.
Coffee is not hot enough.	→ Preheat cup. Descale the machine if necessary.
The lever cannot be closed completely.	→ Empty the capsule container/Check that there is not a capsule blocked inside the machine.
Leakage or unusual coffee flow.	→ Check that the water tank is in position.
Lights flash irregularly.	→ Call the <i>Nespresso</i> Club. → Exit descaling procedure (see paragraph on descaling).
No coffee, water just comes out (despite inserted capsule).	→ In case of difficulties, call the <i>Nespresso</i> Club.
Machine switches itself off.	→ To save energy the machine will turn itself off after 9 minutes of non use. See paragraph on «Energy saving concept».
Front light is red.	→ Water tank is empty or needs to be cleaned.
Pannel cannot be clipped.	→ Ensure orientation as indicated per the arrows inside the panel. Start to clip from the top. In case the panel still does not clip, call the <i>Nespresso</i> Club.

SPECIFICATIONS

	220-240 V, 50-60 Hz, < 1260 W
P _{max}	19 bar
	~ 3 kg
	0.7 L
	 11.1 cm  23.5 cm  32.6 cm

CONTACT THE *NESPRESSO* CLUB

For any additional information, in case of problems or simply to seek advice, call the *Nespresso* Club. Contact details of the *Nespresso* Club can be found in the «Welcome to *Nespresso*» folder in your machine box or at [nespresso.com](https://www.nespresso.com)

In case of machine pick-up, please remove the side panels and keep them safely.

DISPOSAL AND ENVIRONMENTAL PROTECTION

This appliance complies with the EU Directive 2002/96/EC. Packaging materials and appliance contain recyclable materials. Your appliance contains valuable materials that can be recovered or can be recyclable. Separation of the remaining waste materials into different types facilitates the recycling of valuable raw materials. Leave the appliance at a collection point. You can obtain information on disposal from your local authorities.

ECOLABORATION: WWW.ECOLABORATION.COM



We have committed to buy coffee of the very highest quality grown in a way that is respectful of the environment and farming communities. Since 2003 we have been working together with the Rainforest Alliance developing our *Nespresso* AAA Sustainable Quality™ Coffee Program.



We chose aluminium as the material for our capsules because it protects the coffee and aromas of the *Nespresso* Grand Cru. Aluminium is also infinitely recyclable, without losing any of its qualities.



Nespresso is committed to designing and making appliances that are innovative, high-performing and user friendly. Now we are engineering environmental benefits into the design of our new and future machine ranges.

PIXIE CLIPS

NESPRESSO®