



BLUETOOTH SPEAKER

PBT626 | USER MANUAL



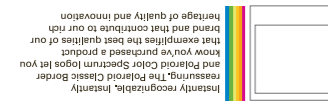
Questions? Need some help? This manual will help you enjoy your new product.



If you still have questions, call our help line: 1-877-768-8481

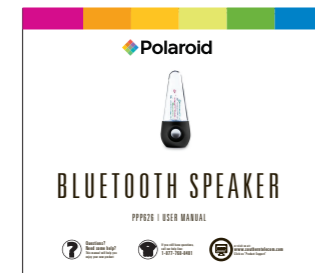


or visit us at: www.southern telecom.com Click on "Product Support"



IN THE BOX

Bluetooth Speaker



User Manual

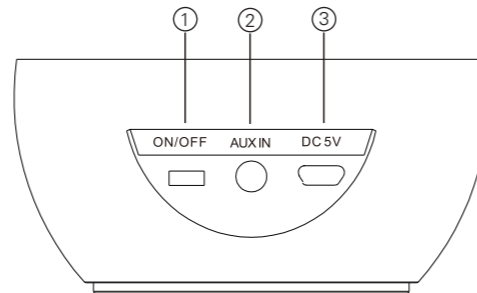


Micro USB Charging Cable



3.5mm Auxiliary Cable

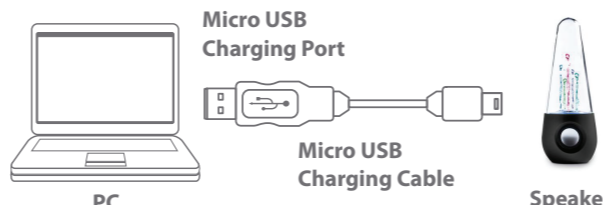
LOCATION OF CONTROLS



- ON/OFF switch
- AUX IN jack
- Micro USB DC 5V charging port

CHARGING THE SPEAKER

- Connect the small end of the Micro USB Charging Cable to the Micro USB DC 5V charging port on the back of the speaker.
- Connect the other end of the Micro USB Charging Cable to the USB port on your computer or other device made for USB charging.
- The LED light is RED when charging. It will shut off when the speaker is fully charged.



i Make sure you charge the speaker for at least 8 hours before using it for the first time.

USING THE SPEAKER

Powering ON/OFF

- Slide the power switch on the back of the speaker to the ON or OFF position.
- Check that your Bluetooth features are turned ON. If you have already paired the speaker with a Bluetooth enabled device, it will automatically connect.
- If you are using the speaker for the first time, go to the "PAIRING THE SPEAKER" section of this User Manual, and pair the speaker to your desired Bluetooth device.

PLAYING MUSIC

To enjoy wireless music on your Bluetooth Speaker, make sure you are connected to a Bluetooth enabled device. Once connected press PLAY on your Bluetooth device. When playback has begun, control the music with your connected device (that has the AVRCP Bluetooth profile).

NOTE: To enable the dancing water feature, you must turn up the volume of your connected device.

USING AS A WIRED SPEAKER

- Turn ON the speaker.
- Connect one end of the included 3.5mm auxiliary cable to the AUX IN jack on the speaker and the other end to an external device's headphone jack (smartphone, tablet, or MP3 player).
- Open a media player on your device and click on PLAY to start playing your music.
- Use the controls on your connected device to control music playback and volume.

i Connecting the audio cable will override Bluetooth mode. When the cable is disconnected, the speaker will automatically reconnect to the last paired device.

TROUBLESHOOTING

? I can pair the Bluetooth Speaker with my Bluetooth device, but I cannot hear any music.

- Make sure your Bluetooth device supports A2DP profile.
- Turn up the volume on your Bluetooth device.
- You may have to unpair the speaker, then re-pair to your device.

? My Bluetooth device is not able to pair with the Bluetooth Speaker.

- Make sure the Bluetooth Speaker is turned ON before beginning the pairing process.
- Keep your Bluetooth Speaker and Bluetooth enabled device within 3 feet of each other during the pairing process.
- The speaker will emit a tone to indicate that it is in pairing mode.
- Check that YOUR device's Bluetooth feature is turned ON.
- Try repeating the pairing process, see "Pairing the speaker."

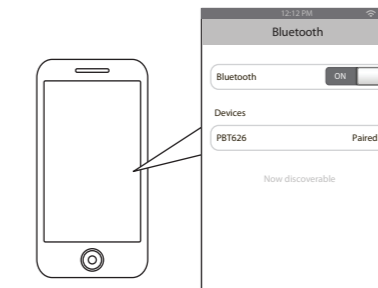
PAIRING THE SPEAKER

- Slide the power switch on the back of the speaker to the ON position.
- A tone will be heard, indicating that the speaker is in pairing mode.
- Keep the speaker and Bluetooth enabled device within 3 feet of each other during the pairing process.
- Set your Bluetooth enabled device to search for Bluetooth devices.

i If there are no paired devices in range when the speaker is turned on, it will go into pairing mode automatically. If a paired device is in range, the speaker will connect to it automatically.

On an iPhone

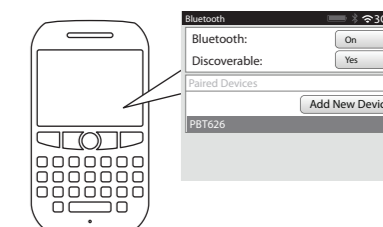
- Go to SETTINGS > BLUETOOTH (Make sure Bluetooth is turned ON)



PAIRING THE SPEAKER (cont'd)

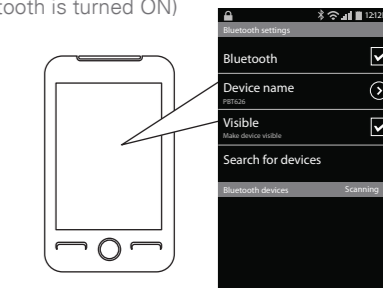
On a Blackberry

- Go to SETTINGS/OPTIONS > BLUETOOTH
- Enable BLUETOOTH



On an Android Phone

- Go to SETTINGS > BLUETOOTH > MENU > Search for devices (Make sure Bluetooth is turned ON)



TROUBLESHOOTING (cont'd)

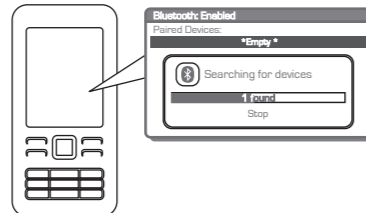
? I cannot get the Bluetooth Speaker into pairing mode.

- Make sure the Bluetooth Speaker is turned ON before beginning the pairing process.
- The speaker will emit a tone indicating that it is in pairing mode.

PAIRING THE SPEAKER (cont'd)

On other Cell Phones/Devices

- Review the instruction manual that came with your phone/device.



- When the Bluetooth enabled device finds the speaker, select "PBT626" from the list of found devices.
- If required, enter the password 0000. Select OK or Yes to pair the two units.
- After a successful registration, a beep will be heard.

NOTE: If you would like to connect the speaker to another device, you must unpair the speaker from the currently paired device first. On your device's Bluetooth settings, select "PBT626", then select "unpair". When the speaker has been unpaired, it automatically goes into pairing mode again.

i The screenshots above are typical of many Bluetooth enabled devices in the market today, and are used to assist in the explanation of the pairing process. Your Bluetooth enabled device's interface and interaction with the Bluetooth Speaker may slightly differ from the illustrations above.

WARRANTY

This product as supplied and distributed new by AIT, Inc. ("AIT") to the original consumer purchaser is warranted by AIT against defects in material and workmanship for a period of one year from your date of purchase ("Warranty"). In the unlikely event that this product is defective, or does not perform properly, you may within one year from your original date of purchase return it to the authorized service center for repair or exchange.

- TO OBTAIN WARRANTY SERVICE:**
- Call the Customer Support number located below, or go to our website portal to receive an SRO number.
 - Provide proof of the date of purchase within the package (Dated bill of sale).
 - Prepay all shipping costs to the authorized service center, and remember to insure your return.
 - Include a return shipping address (no P.O. Boxes), a telephone contact number, and the defective unit within the package.
 - Describe the defect or reason you are returning the product.

Your product will be repaired or replaced, at our option, for the same or similar model of equal value if examination by the service center determines this product is defective. Products received damaged as a result of shipping, will require you to file a claim with the carrier.

The shipping address of the authorized service center is:

AIT, Inc.
ATTN: Customer Service (2nd Floor)
14-C 53rd Street
Brooklyn, NY 11232

IN NO EVENT WILL AIT, ITS MANUFACTURERS, DISTRIBUTORS OR PLR IP HOLDINGS, LLC BE LIABLE FOR ANY INCIDENTAL, DIRECT, INDIRECT, SPECIAL, PUNITIVE OR CONSEQUENTIAL DAMAGES (SUCH AS, BUT NOT LIMITED TO, DAMAGES FOR LOSS OF PROFITS, BUSINESS, SAVINGS, DATA OR RECORDS) RELATED TO THIS PRODUCT, EXCEPT AS STATED HEREIN. NO OTHER WARRANTIES SHALL APPLY.



Questions? Need some help? This manual will help you enjoy your new product.



If you still have questions, call our help line: 1-877-768-8481



or visit us at: www.southern telecom.com Click on "Product Support"

Caution: Any changes or modifications could void the user's authority to operate the equipment. Note: This equipment has been tested and found to comply with the limits for a Class B digital device, pursuant to part 15 of the FCC rules. These limits are designed to provide reasonable protection against harmful interference in residential installations. This equipment uses and can radiate radio frequency energy and, if not installed and used in accordance with the instructions, may cause harmful interference to radio communications. However, there is no guarantee that interference will not occur in a particular installation. If interference does occur, the user is encouraged to try to correct the interference by one or more of the following measures: turning the equipment off and on, the user is encouraged to try to correct the interference by one or more of the following measures: Reorient or relocate the receiving antenna. Increase the separation between the equipment and receiver. Consult the dealer or an experienced radio/TV technician for help.