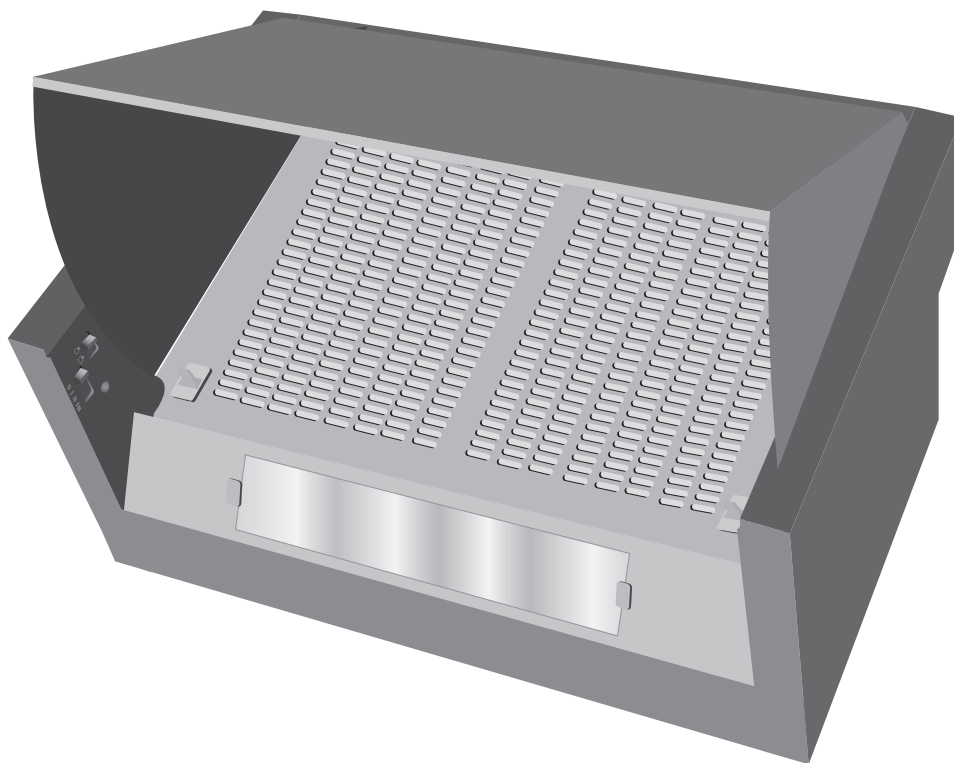


myappliances

USER HANDBOOK

60cm INTEGRATED COOKER HOOD



ART11301

CARBON FILTER ORDERING HOTLINE

0844 800 1128

Introduction.

Congratulations and thank you for choosing our Integrated Cooker Hood. We are sure you will find your new integrated cooker hood a pleasure to use. Before you use your cooker hood we recommend that you read through the whole user manual, which provides the description of the cooker hood and its functions.

To avoid the risks that are always present when you use an electrical appliance it is important that this cooker hood is installed correctly and that you read the safety instructions carefully to avoid misuse and hazards. We recommend that you keep this instruction booklet for future reference and pass it on to any future owners. After unpacking the cooker hood please check that it is not damaged. If in doubt, do not use the appliance but contact Customer Services on 0844 800 1128.

Our policy is one of continual improvement in design and development, therefore strict accuracy of illustrations and descriptions cannot be guaranteed.

Please keep these instructions in a safe place for future reference.

Contents.

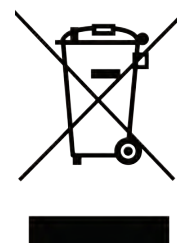
Page

- ☐ 2 Environmental Notes
- ☐ 3 Safety Instructions
- ☐ 4 Dimensions
- ☐ 5 Electrical Requirements / Installation
- ☐ 6 Installation continued / Fitting the Décor Panel
- ☐ 7 Extraction or Recirculation Mode
- ☐ 8 Accessories
- ☐ 9 Using Your Cooker Hood
- ☐ 10 Maintenance & Troubleshooting
- ☐ 11 Customer Care
- ☐ 12 Guarantee

Environmental notes.

Most of the packing materials are recyclable. Please dispose of the packaging responsibly using your local recycling depot or by placing them in the appropriate collection containers.

If you wish to discard this product, please contact your local authority and ask for the correct method of disposal.



Safety Instructions.

- ☐ Keep young children from using, playing with or tampering with this appliance.
- ☐ This appliance is not intended for use by persons (including children) with reduced physical, sensory or mental capabilities, or lack of experience or knowledge, unless they have been given supervision or instruction concerning the use of the appliance by a person responsible for their safety.
- ☐ This appliance must be disconnected from the electricity supply before carrying out maintenance, to avoid any possibility of electric shock.
- ☐ Flambé cooking is prohibited underneath this appliance.
- ☐ This appliance is designed for domestic use only and cannot be installed for external use.
- ☐ This appliance must not be installed below the minimum height, above a cooking hob, that is designated in the installation instructions.
- ☐ The exhaust from this appliance must never be discharged into any heating flue, which may carry combustion products from another source i.e. boiler flue.
- ☐ Exhaust air must not be discharged into a wall cavity, unless the cavity is designed for the purpose.
- ☐ There must be adequate ventilation of the room when the appliance is in use at the same time as appliances burning gas or other fuels.
- ☐ When this appliance is in use do not leave gas burners lit without covering the flame with a pot or pan. Always turn off gas burners before you remove pots or pans.



CE marking certifies that this appliance conforms to the following EEC directives:- Electromagnetic Compatibility – 89/336/EEC, Low Voltage Equipment – 72/23/EEC

Integrated Cooker Hood Dimensions.

Fig 1

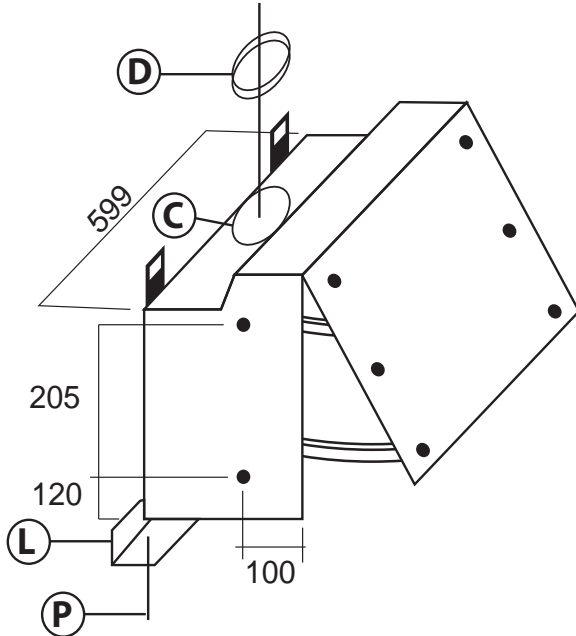


Fig 2

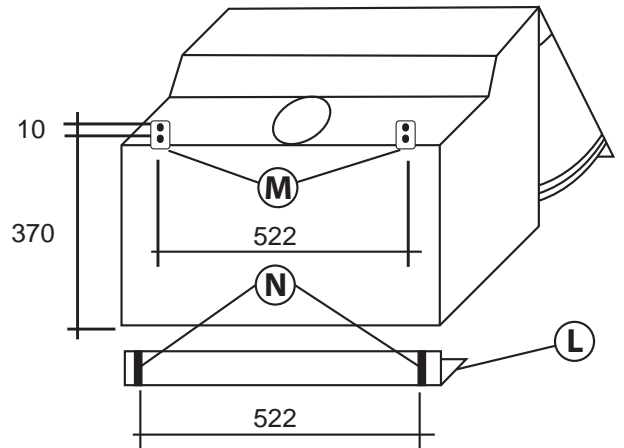
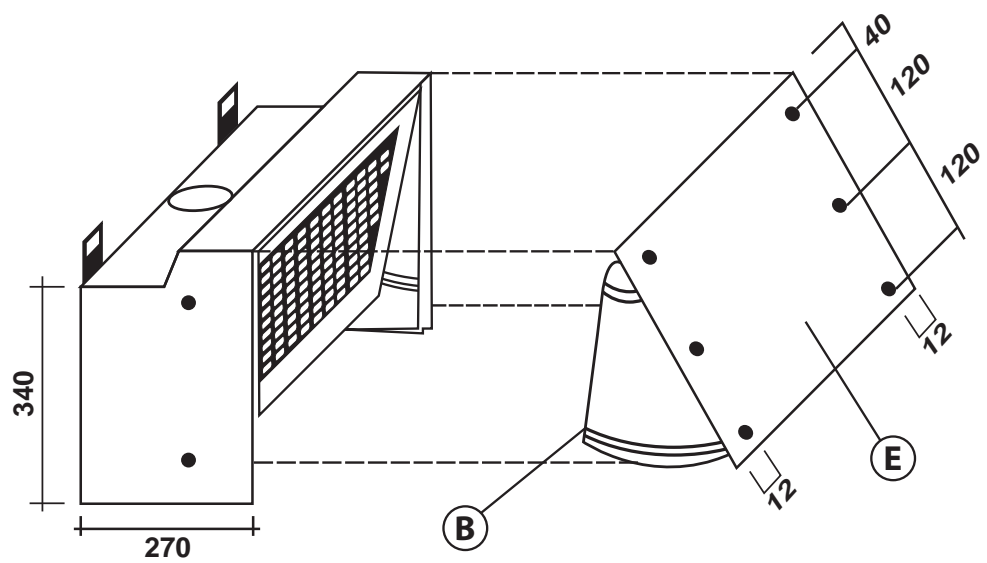


Fig 3



Electrical Requirements

Any permanent electrical installation must comply with the latest I.E.E. Regulations and local electricity company regulations. For your own safety a qualified electrician or contractor who is on the roll of the National Inspection Council for Electrical Installation Contracting (NICEIC) should undertake the electrical installation.

Electrical Connection.

Before connecting the mains supply ensure that the mains voltage corresponds to the voltage on the rating plate inside the cooker hood.

WARNING: THIS APPLIANCE MUST NOT BE EARTHED.

The cooker hood is supplied with a 2-core mains cable and must be connected to the electricity supply via a double pole switch having a 3mm minimum contact gap on each connector. A Switched Fused Connection Unit to BS 1363 Part 4 is a recommended.

The fuse must be rated at 3 Amps.

The wires in the mains lead are coloured in accordance with the following UK code:

Brown = L - Live

Blue = N - Neutral

The connection point must be placed in a position adjacent to the appliance so as to be readily accessible for an engineer in the event of a breakdown.

Disconnect the cooker hood from the mains supply before carrying out any kind of maintenance or cleaning.

Installation.

Before installing this cooker hood it must be decided whether to use it in extraction mode or recirculation mode. See page 7 for a description of the differences between the two modes.

If it is decided to use it in extraction mode any masonry work must be completed prior to fitting the cooker hood and the electrical connection installed.

Mounting Height.

The bottom of the cooker hood should be no less than 650mm above an electric hob, 750mm above gas hob or mixed fuel cooker. For the best results the hood should be mounted as near as possible to the minimum recommended height.

Mounting of the Cooker Hood Between Two Hanging Cupboards

6.

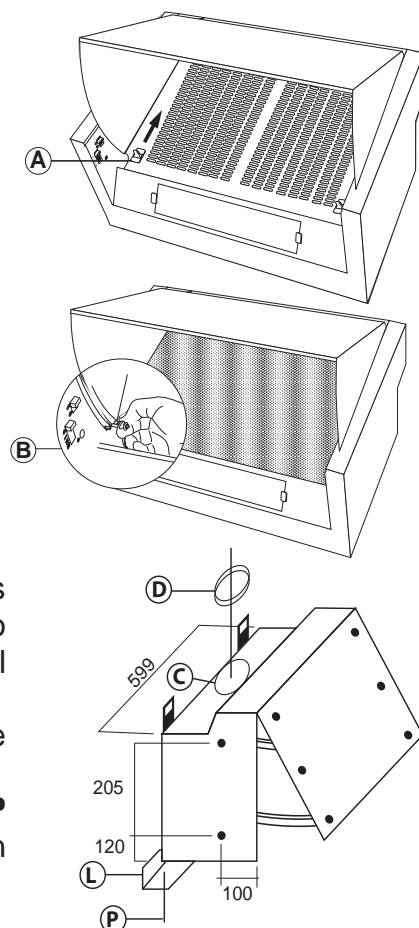
Open the front panel and push the two catches (A) upwards and remove the grille and grease filter.

Pull the locking pin B, on both sides of the front panel, until they stop, and pull the front panel forward until it is released from its guide rails.

Drill 2 holes of 2.5mm diameter on the side of the hanging cupboards as shown. The thickness of the outer décor panel must be taken into consideration so that when it is installed it remains at the same level as the side hanging cupboard doors.

Fix the cooker hood to the side cupboards using 4 screws that are appropriate to the type of cupboard.

To close the gap between the cooker and the wall loosen screws **P** and slide the spacer **L** backwards until it touches the wall and tighten the two screws.

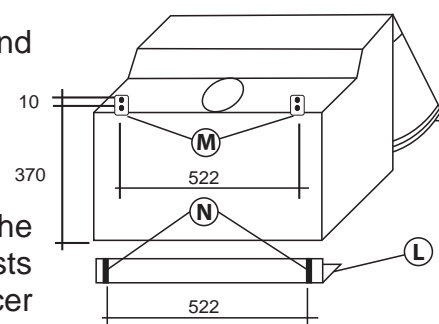


Mounting of the Cooker Hood on the wall.

Drill 4 holes, 2 holes at position **M** and 2 holes at position **N** and insert expanding plugs appropriate to the type of wall construction.

Fix the spacer **L** to the wall at the correct height.

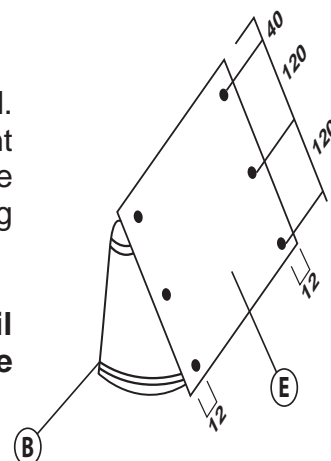
Fix 2 screws at position **M** and hang the cooker hood onto the screws. Adjust the hanging clamps so that the cooker hood rests onto the spacer **L**. Tighten the hanging clamp screws and spacer screws **P**.



Fitting the Décor Panel.

Before refitting the front panel **E** the outer décor panel must be fitted. Fix the décor panel as per the illustrated dimensions. Refit the front panel by inserting it in the upper and lower slide guides. Pull the locking pins out until they stop and close the outer door until locking pins **B** click into position.

Note: It is important that if the locking pins are not pulled out until they stop, and the outer door is forced into the slide guides, the pins could be damaged or broken.



Extraction Mode or Recirculation Mode.

Your new cooker hood can be installed either for recirculation or extraction through an outside wall. NOTE: The cooker hood is more efficient in the extraction mode.

Installation for Recirculation.

If it is not possible to exhaust through an outside wall the cooker hood can be fitted with a carbon filter (optional extra) to remove any odours and the air is then re-circulated.

The carbon filter can be purchased from Customer Services.

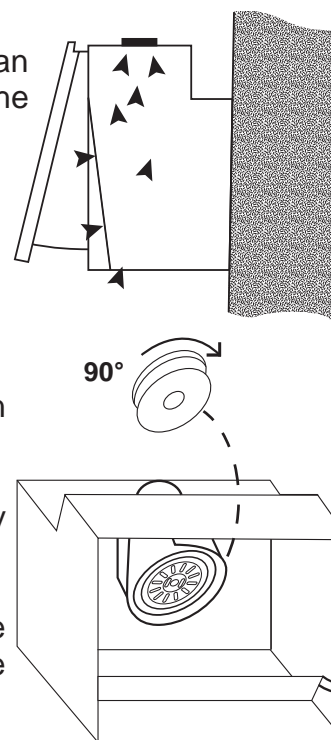
Tel: 0844 800 1128

Part Number 02846762.

To fit the carbon filter remove grease filter panel and introduce the carbon filter to the motor and turn it through 90° until it clicks into place.

The carbon filters are not washable and cannot be regenerated. They should be replaced approximately every 4 months.

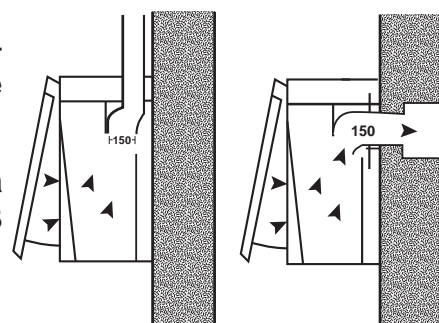
The saturation of the active charcoal depends on the length of time the cooker hood is in use and the type of cooking. If food is fried regularly the filter will become saturated more quickly.



Installation for Extraction.

This mode is recommended if at all possible. Fumes and grease-laden air are drawn into the cooker hood and expelled outside the room.

The size of the ventilation pipe, (not supplied), must have a minimum diameter of 150mm and should not be longer than 3 meters.



- ☐ Keep exhaust flue as short as possible.
- ☐ Do not reduce the internal diameter of the exhaust flue throughout its full length.
- ☐ Keep bends in the exhaust flue to a minimum.
- ☐ When using a flexible flue always install the duct with the helix pulled taut to minimise pressure loss.
- ☐ Failure to observe these basic instructions will drastically reduce the performance and increase the noise level of the cooker hood.

To fit the extraction pipe insert the vent collar **D**, (this can be found inside the cooker hood when it is unpacked), into the aperture **C** on the top of the cooker hood and secure the pipe to the collar.

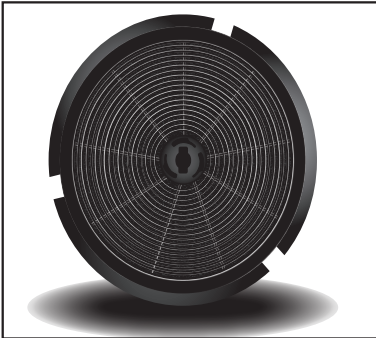
Important: The exhaust air must not be expelled through a smoke or waste gas chimney, which is in use, or through a shaft used for ventilating rooms or into the cavity of a wall.

If the room contains a fuel burning appliance, such as a gas, or oil fired, central heating boiler, which is not of the 'Balanced Flue' type, you should make sure that there is adequate air inlet into the room at all times so that fumes from the boiler are not drawn back into the room by the Cooker Hood.

Accessories.

Description

Part Number



Carbon filter

02846762



Lamp

20131006



Grease filter

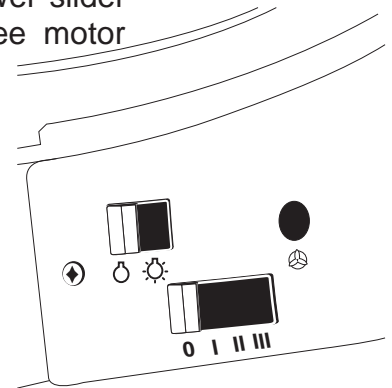
02844060

Using Your Cooker Hood.

The light and the fan motor will not operate if the outer cover is in the closed position.

Pull open the outer door and the control switches can be seen on the left side panel. The upper slider switch will turn the lamps on and off. The lower slider switch will turn the extractor fan motor on and off. There are three motor speeds available.

Position 1, should be selected when simmering or using only one pan.
Position 2, for normal cooking, up to four pans.
Position 3, when frying or cooking foods with strong odours.



If the outer door is closed without switching off the fan motor, or lamps, an override switch will turn the cooker hood OFF. When the outer door is opened the cooker hood will resume working at its previous settings.

The cooker hood will not operate when the outer door is opened if the switches are in the OFF position.

To obtain the best results from your cooker hood it is recommended that you switch on the fan motor 10 to 15 minutes before you start cooking and leave it switched on for 15 minutes after you have finished.

Your cooker hood is designed to extract odours and grease-laden air from the room. It is not designed to remove steam.

Before using your cooker hood for the first time it should be cleaned using a soft cloth, with warm soapy water. Do not use any type of abrasive detergents. Thoroughly dry the cooker hood.

To keep your cooker hood in pristine condition it should be cleaned regularly.

NOTE: Always disconnect the electricity supply before you commence cleaning, or any form of maintenance.

Maintenance and Troubleshooting.

Lamps fail to operate

A replacement is possible necessary, but first check that the lamp is correctly fitted into its holder. Remember that the lamps are not covered by our guarantee. Remember to disconnect the mains electricity supply before replacing the lamps. Replace any failed lamps with the same type – E14 coupling, 40 Watts Maximum (Part Number 20131006).

Motor is on but the fan does not seem to be as efficient as usual

Check the grease filter. If it has not been cleaned recently, it might be clogged with grease. Remove it and soak it in hot water and washing up liquid for about an hour. Rinse thoroughly in hot water and allow it to dry before refitting it.

The grease filter should be cleaned every 2 months.

NOTE: The aluminium panel grease filter may alter in colour after several washes. This is not cause for concern or replacement of the filter.

If the cooker hood is being used in recycling mode the carbon filter may be saturated. If it has not been replaced for 4 months remove it and insert a new one.

Woks normally but cooking smells linger

If you're using the cooker in recycling mode change the charcoal filter. It may require replacement.

Appliance does not work at all

Check that your cooker hood is switched on at the mains. Check that the 3 amp fuse is has not blown. Next, check that there is power to your home by switching on adjacent lights. Open the front panel, by pulling it towards you, and check that the fan motor switch is switched to one of the 3 speed settings.

Still not working? Call the service agent

If, having consulted the above diagnostic chart you are still unable to remedy the situation, please contact our Call Centre: 0844 800 1128.

Customer Care.

If you require assistance; advice or to purchase accessories please telephone our Call Centre:

0844 800 1128

Please have the following information available:

- ☐ Name, address, postcode, contact telephone number.
- ☐ Purchase receipt and supplier's details.
- ☐ The reason for your call.
- ☐ Model number.

The model number of your Cooker Hood is:

IH60SV

Guarantee.

statutory rights and cannot be varied by any other guarantee, which may have been issued with the unit.

This Guarantee Does Not Cover: -

A. Service calls which are not related to any defect in the appliance. The cost of a service call will be charged if the problem is not found to be an appliance fault. For example: -

- ☒ Correcting the installation of the appliance.
- ☒ Instructing you how to use the appliance.
- ☒ Replacing house fuses or correcting house wiring.
- ☒ Correcting faults caused by the user.
- ☒ Noise or vibration that is considered normal.
- ☒ Accidental or wilful damage, misuse or modifications likely to or which do affect the appliance or its performance.
- ☒ Consumable items such as filters and light bulbs.

B. Defects caused by factors other than:

- ☒ Normal domestic use or
- ☒ Use in accordance with the Appliance User Guide.

C. The cost of repairs carried out by non-authorised repairs or the cost of correcting such unauthorised repairs.

D. Normal recommended maintenance as set out in the Appliance User Guide.

This appliance has been designed for use in a normal domestic (residential) environment. This appliance is not designed for commercial use (whatsoever). Any commercial use by a Customer will affect the appliance's guarantee.

The Manufacturer's Authorised Repairer must be contacted if service is required during the period of this guarantee.

: 0844 800 1128.

myappliances
Unit 3, Normandy Landings
Wakefield Europort, Pope Street
Castleford
West Yorkshire
WF6 2AG