

## **Contents**



System Requirement  
Installation  
Operation  
Q&A  
Troubleshooting

Page 02  
Page 02  
Page 03  
Page 13  
Page 14

### A. System Requirement

Device	Minimum Request	Suggestion
CPU	P4 2.0GHz or other with same level	P4 3.0GHz or other with same level
RAM	512MB	1GB
Network Equipment	Yes	
Resolution	800*600 24bits	1024*768 24bits
IP Cam	1 set at least	

### B. Installation

1. Insert the CD to the CD drive. Auto-install menu will be popped up. Please select “Install i-Gurad DVR” to carry out the installation.
2. If an old version had been installed into your computer, the system will prompt you to execute update.
3. Follow the on-screen instruction to finish the installation.

## C. Operation

### I. Activating the Software

Method (1): Click the shortcut of **i-Guard DVR** on your desktop screen.

Method (2): Run **Start\Program Files\i-Guard DVR\i-Guard DVR.**

### II. Main Screen



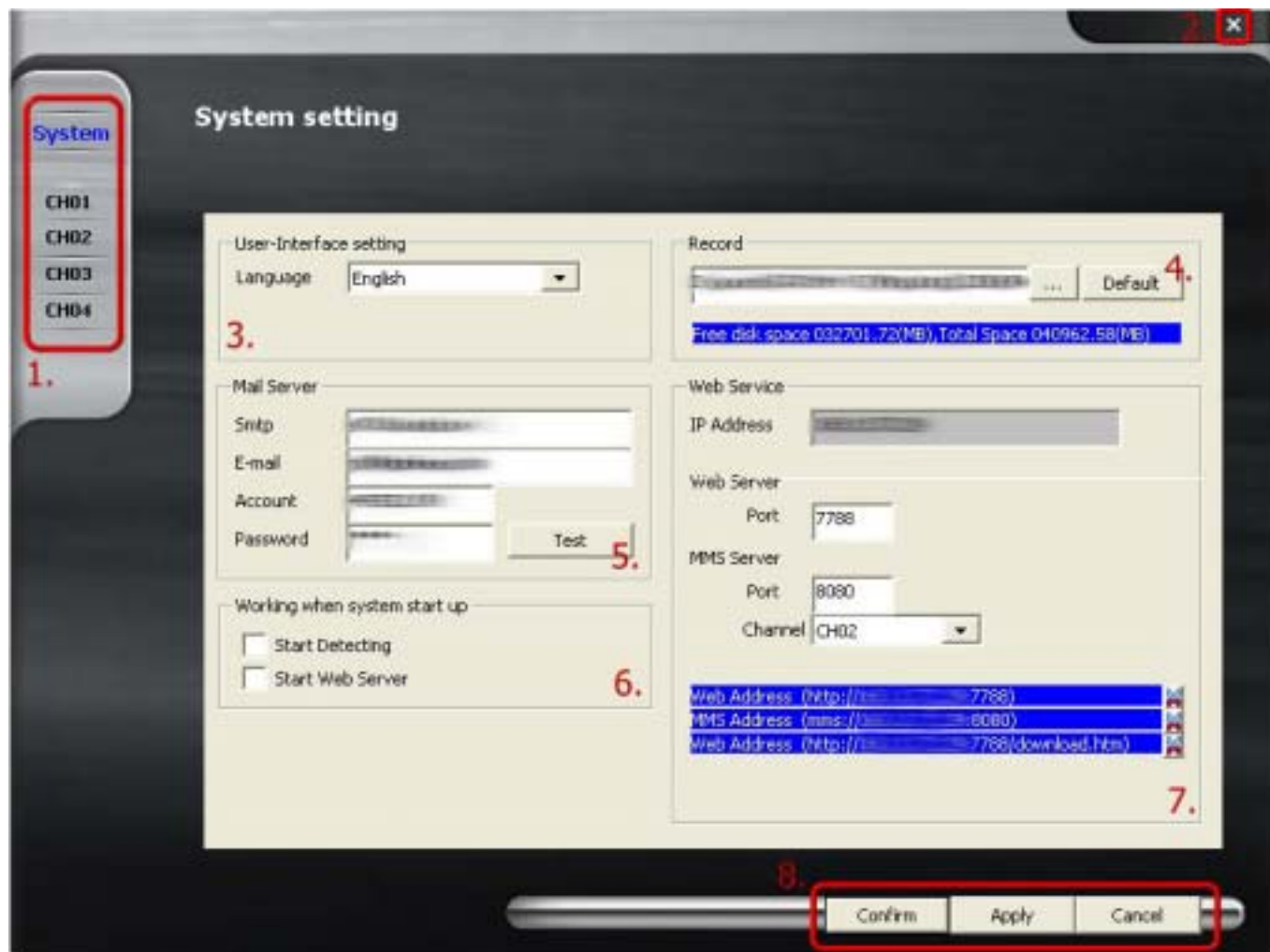
1. **Real View Screen**: Four cameras can be monitored at one time and the system supports the function of **Click-To-Go**.
2. **System Tools**: **Minimized, Switched to small Window, Close the Program** from left to right side.
3. **Channel Indicators**: Click CH01 to CH04 to switch into that channel with single channel view mode.  
The center is status light; **Yellow Light** means stand by; **Blue Light** means being monitored; **Green Light** means Detecting(recording).  
**Blue Light** on the right side means audio is open; **Black Light** means the audio is closed or no audio is supported
4. **Main Menu**: From the top to the bottom, they are **Snapshot , Detect, Web Server, Setup, and Playback**.
5. **Status Bar**: It displays current time, date, system status, and hard disk space (while in Detecting)

6. **Channel Tool:** The top layer displays alarms or messages

The bottom layer displays **Open Snapshot Folder, Display Size, motion tracking, Single View, Multiple View, Auto pan, Night View, PT go Home.**

7. **PTZ:** Move the lens with eight directions.

### III. System Configuration



1. Selection: Choose to set System or Channel.
2. System Tools
3. Interface Setting: It is used to change language.
4. Storage Location: It is used to set a place for stored the recorded files and displays current available space.
5. E-Mail Setting: It is used to set an e-mail box that system can send notification and mail a test letter to the specified mailbox.
6. Synchronized Execution: When the program is started, the monitoring function or web server will be activated at the same time.
7. Broadcast Setting: It is used to set the connection port for the server and set the channel for broadcasting.
8. Menu Bar

## IV. Channel Setting - Image Source



- 1. Setting Tool Bar:** There is only Image Source tab for the channel that has not been activated.  
After **Trigger Recording**, **Motion detect** and **Alert setting** tabs will appear.  
For current selected tab, the text will be shown in **blue**.
- 2. Remote Server:** It is used to set channel activation, camera position, connection port, account number and password.
- 3. IP Cam:** It can detect the type of the camera and current settings. In addition, setting modification for each item can be done in this field. If the settings here have been modified, all the users connected to this IP Cam will be influenced with the new settings.

## V. Channel Setting – General Setting



1. **Name:** Set the name and description for the selected channel.

2. **Text Display:** Add channel information, date, time or on the screen.

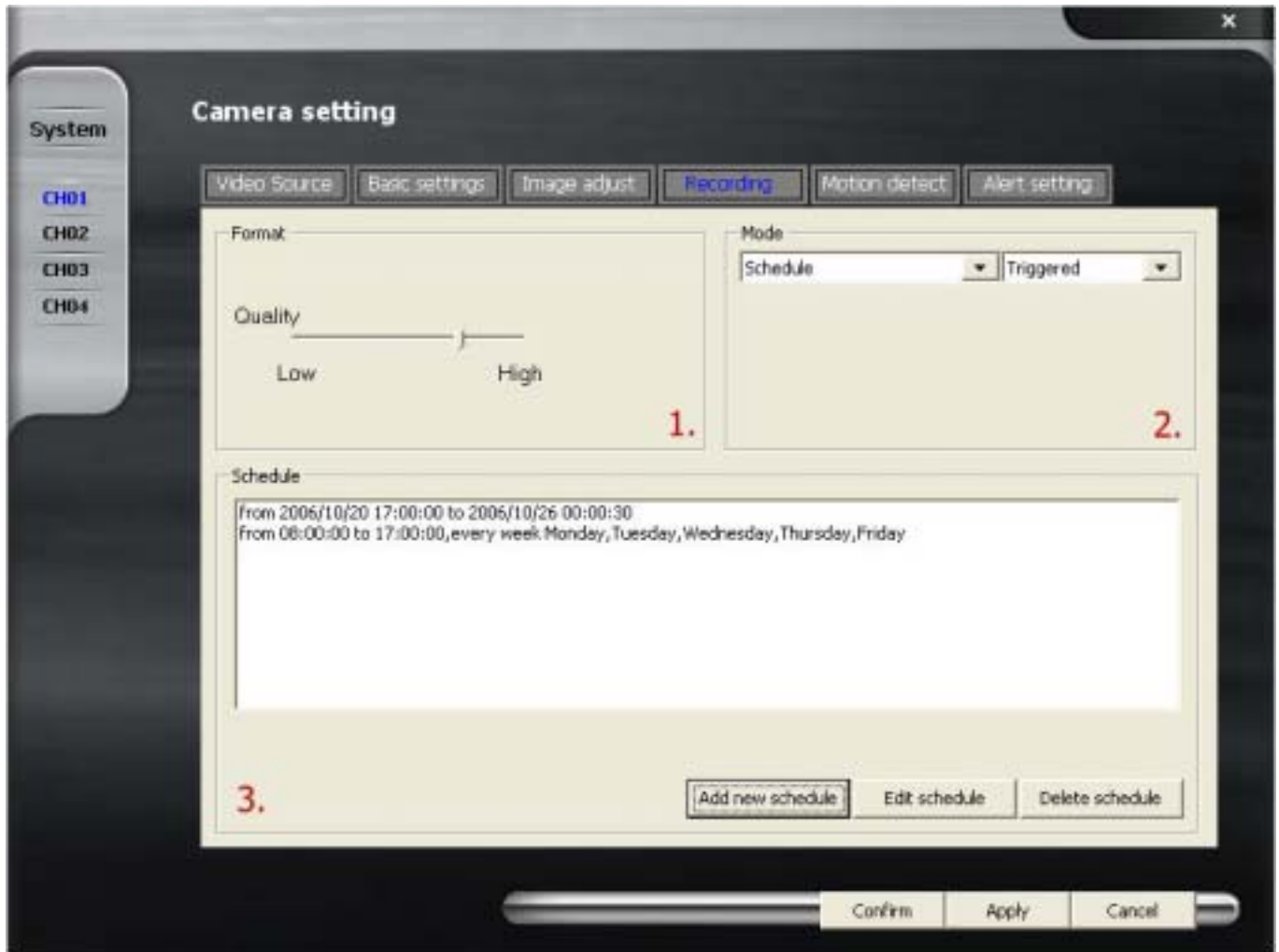
**Note:** Recording or broadcasting also will be influence by the settings in Text Display.

## VI. Channel Setting – Image Adjustment



1. Screen Adjustment: It supports **Flip Horizontal** and **Flip Vertical**, and **Rotation** with 360°

## VII. Channel Setting – Recording



- 1. Resolution Setting:** Set the quality of the recording. The more the resolution is, the higher the quality and the larger the files will be.
- 2. Recording Type:** It can be divided into **Non Record**, **Scheduling** and **Record-at-click**.  
**Scheduling Recording** and **Record-at-click** also be divided into **Full Time Recording** and **Recording if Triggered**.
- 3. Schedule:** It displays message while in Scheduling Recording type.  
It allows users to add, modify or delete the schedule. Also it support multi-scheduling.

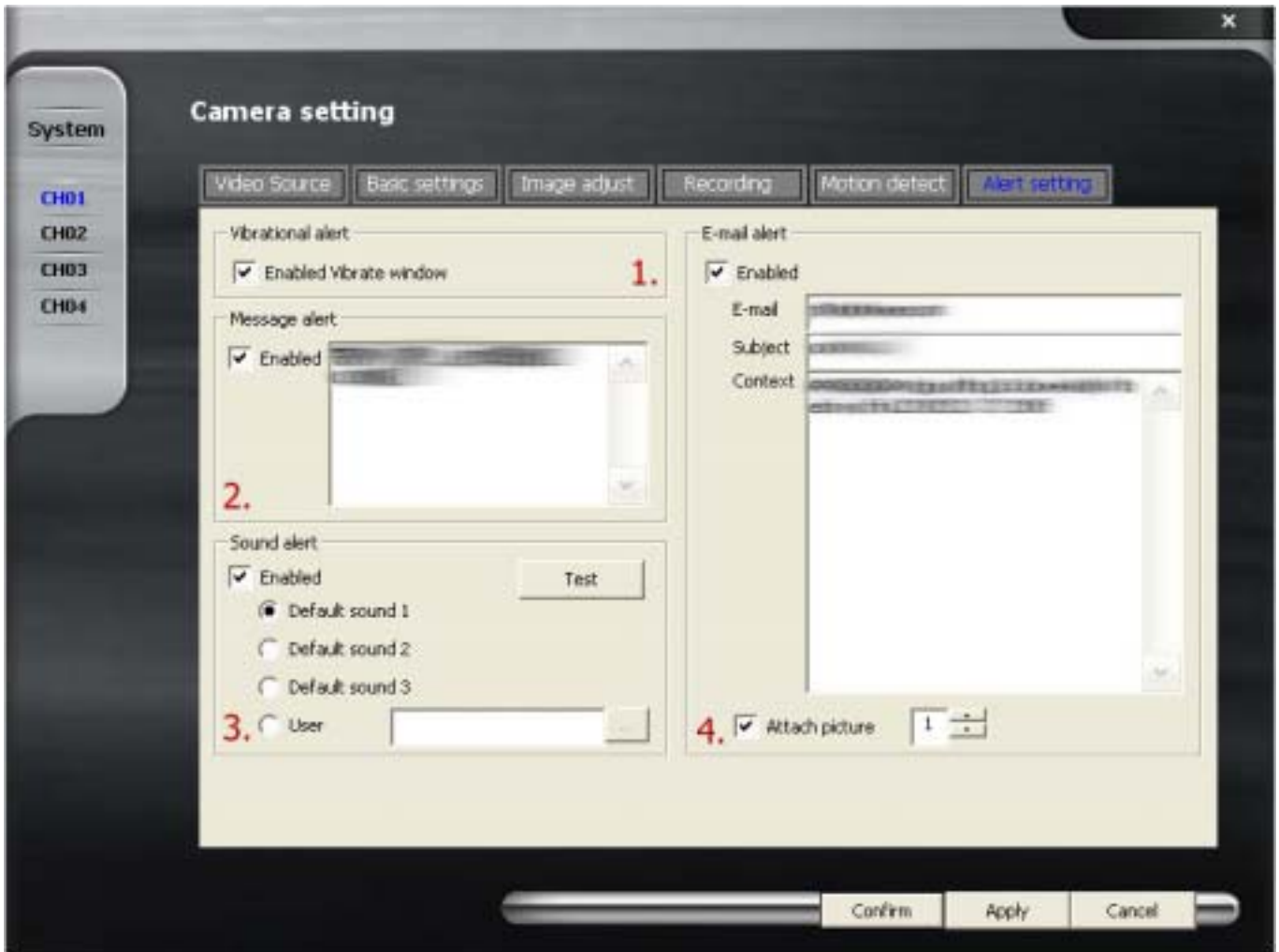


## VIII. Channel Detection - Motion detect



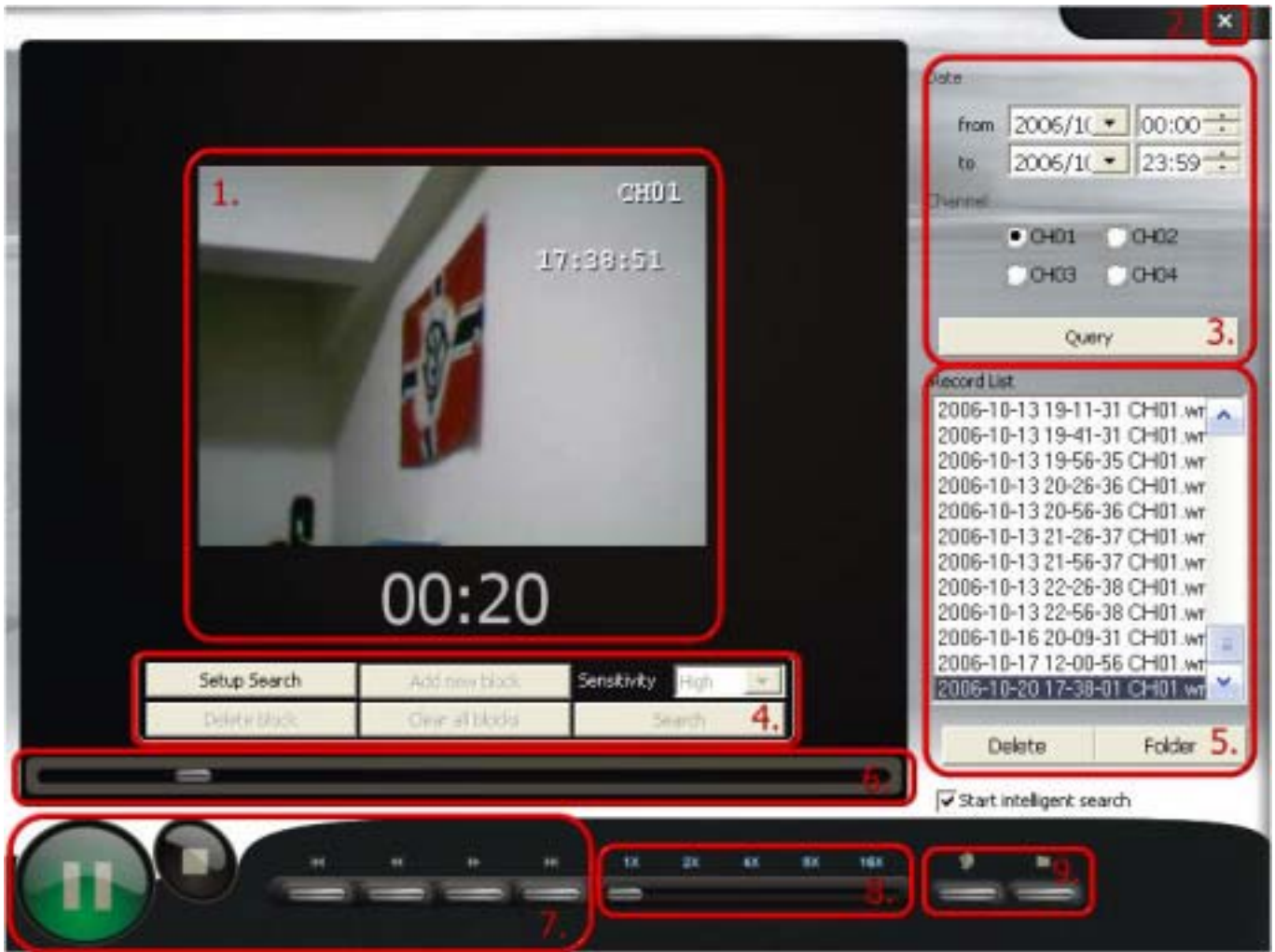
- 1. Display Screen:** It can display the detected fields with **green** rectangle on the screen.
- 2. Field Setting:** In this filed, you can add, delete the detected field  
**Test motion detect** can run a real test if the displacement of the object can be detected or not.
- 3. Sensitivity:** When the sensitivity is set in “High”, little displacement of the image will be judged with triggering. When the sensitivity is set in “Low”, only large of displacement will be judged with triggering.

## IX. Channel Setting – Alarm



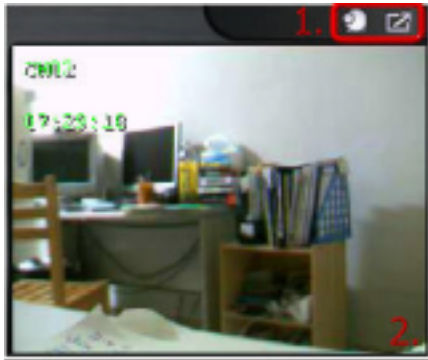
1. **Vibration:** When there is an alarm, the screen will vibrate to warn the user.  
It the program is minimized or move to edge of the screen, it will be recover to the center of the screen and vibrate automatically.  
If the program is switched by **Small Window** mode, the screen will not vibrate.
2. **Warning Message:** When there is an alarm, user defined alarm message will be displayed on the **Channel Tool** of the main screen.
3. **Sound Effect:** When there is an alarm, a built-in sound effect or used defined sound will be sent out to warn the user.
4. **E-mail Alarm:** When there is an alarm, the system will send a letter to the mail box that user set in E-mail Setting field to notify the receiver. One to five snapshots will be attached with the mail.

## X. Playback



1. **Image Area:** The content of the film and seconds will be shown in this field.
2. **System Tools**
3. **Query Tool:** Inquire all the saved recorded files within certain time for some channel and display all the files in the list.
4. **Intelligence Search:** The usage is the same as Motion Detection. It can detect if there is any displacement with certain area in the film.
5. **Lists:** It will display the result of the inquiry and allows user to delete selected file or open the folder that stores recorded files.
6. **Shuttle(Time Axis):** It can judge which time point that film is played currently. Also, it can jump to the specified time point of the film directly.
7. **Play Toolbar:** From left to right side, they are Play(Pause), Stop, Previous, Playback, Fast, Next.
8. **Transmission Toolbar:** Supports one to sixteen times of Transmission.
9. **Snapshot Toolbar:** From left to the right side, they are **Capture** and **Open Snapshot Folder**.

### Small(Mini) Window



1. **System Tools:** From left to right, they are **Capture, Recover to Main Screen.**
2. **Small Window:** It can switch among four channels (by turn) and be dragged to any place of the screen.

### D. Q & A

**Q1:** Why some buttons on **Channel Tool** of the **Main Screen** cannot be pressed?

**A1:** These functions (e.g., **Displacement Tracing**, **Auto Cruise**) can be used only the screen has been switched into Single Channel View.

**Q2:** Why the system settings and playback function of recording cannot be used?

**A2:** When the **Monitoring** or **Server** function is activated, the system will not allow users to configure system settings and use playback function. Simply close monitoring/server function. And then try again.

**Q3:** Why some buttons on the main screen will be shown in **deep-gray**, **slight-gray**, **orange** and **blue**?

**A3:** **Deep-gray** means that function cannot be used during certain mode, or the device does not support such function. **Slight-gray** means such function can be used. **Orange** means the mouse cursor is placing on the button. **Blue** means the mode used currently or such function is activated at present.

**Q4:** Why can't I use PTZ, Lens Zero or Auto Cruise?

**A4:** Such modes must be used within Single Channel View mode. If you cannot use these functions after switching into Single Channel View mode, that means the device does not support PTZ.

**Q5:** Should I type IP address if I want to use **Image Source** function? I do not have static IP. Can I use DDNS?

**A5:** This program supports DDNS. It will be OK if you type IP address or DNS address.

**Q6:** What is Click-To-Go?

**A6:** In the **Real Monitor** window of **Main Screen**, when you click the left mouse button, the lens will move to the place that mouse stops. That place will become the center of the main screen. You can use this function no matter in **Single Channel View** or **Multi-channel View** mode. Yet it is not available for the device that does not support PTZ.

**Q7:** Why recording cannot start after pressing the monitoring button?

**A7:** Please check the recording settings on the Channel Setting page. It might be that such channel was set by **no recording**, **scheduling recording** or **recording if triggered**.

**Q8:** I find some screen is stopped/disturbed in the real-time monitoring screen.

**A8:** Please check the connection quality of the network and check if the IP Cam is run normally or not. After checking all of these and removing the problems, the program will try automatically again.

### E. Troubleshooting

- 1. When the program is starting or after setting the system configuration, the error message “Can not connect to following channel(s): CH\*\*” will appear**  
It means that the system cannot detect IP Cam. It might be caused by wrong IP address, trouble in network or something wrong happened to IP Cam.
- 2. When the program is starting or after setting the system configuration, the error message “Can not import to following channel(s): CH\*\*” will appear.**  
It means that the remote equipment might not be IP Cam, but other Web Server. Please check the IP address that you have entered again carefully.
- 3. After recording for a long time, the program will have no response; or after finishing the program, the messages of “No Buffer Space Error”, “Virtual RAM insufficient” will appear.**  
It means the real RAM of the computer is under the minimum request (512MB). It is suggested to use a computer with 1GB of RAM or above.
- 4. An error message of “System change display setting error!” appears while starting the program.**  
It might be that the user is using remote control software (remote desktop, PC Any Where, VNC, etc.) to access into the program. Such thing results in the color bytes of system not 24 bits or above.
- 5. For other error message, or do not know what the error message is.**  
Please contact with the customer service member.