

1. Product Description

Avantree BTTC-200 is a 2-in-1 Bluetooth stereo audio transceiver, which can easily switch between receive and transmit modes. With standard 3.5mm audio jack, it's plug & play, no software installation required. And it is very simple to use and allows your audio devices to send or receive stereo audio via Bluetooth wireless.

2. Product Overview

- (1) LED Indicator
- (2) Multi-Function Button (MFB)
(Power on / Off / Pairing)
- (3) Micro USB charging socket
- (4) 3.5 mm audio jack
- (5) TX/RX switch button



What's in the box:

- Avantree BTTC-200
- 3.5mm to 3.5mm audio cable
- USB charging cable
- User Manual
- Warranty card

3. Charging

TC200 comes with a built in rechargeable battery that provides a very long standby time and working time. We recommend charging the battery fully before using it for the first time.

- 1) Insert one Micro USB charging cable end to Saturn Micro USB socket, and put the other end into a standard USB power outlet, such as laptop or desktop.
- 2) It takes 3 hours to charge full and reaches its full capacity for the first time. Each subsequent charge cycle take around 2 hours.
- 3) LED will indicate red when charging, and goes off when charging is complete.
- 4) If you have not used the device for a few months, LED might not turn red when first charging. It might take 15-35 minutes before the LED turns red.
- 5) We suggest to fully charge the device at least every two months

Notice:

- When battery power is low, the indicator light will flash red. Please recharge the battery.

4. Transmitter, Turn On / Off

Please push the click button to TX mode from TX / RX position, before power on. TX or RX mode can not be changed after powering on Saturn.

Turn On: press and hold the MFB button for about 5 seconds until the blue LED is on for 1 second

Notice: For the first time use or first time turn on after clear connection list, transmitter Saturn will automatically enter into pairing mode, the LED light flashes blue quickly.

Turn Off: press and hold the MFB button for about 3 seconds until the red LED is on for 1 second, and then go off.

5. Transmitter, Pairing with a Bluetooth device (Tutorial online)

After TC200, under TX mode, has connected to a bluetooth stereo device, you can enjoy music wirelessly. Before pairing, please make sure your Bluetooth stereo device supports Bluetooth A2DP profile. (such as Bluetooth stereo headset Avantree Jogger, Bluetooth speaker Avantree Pacifica.)

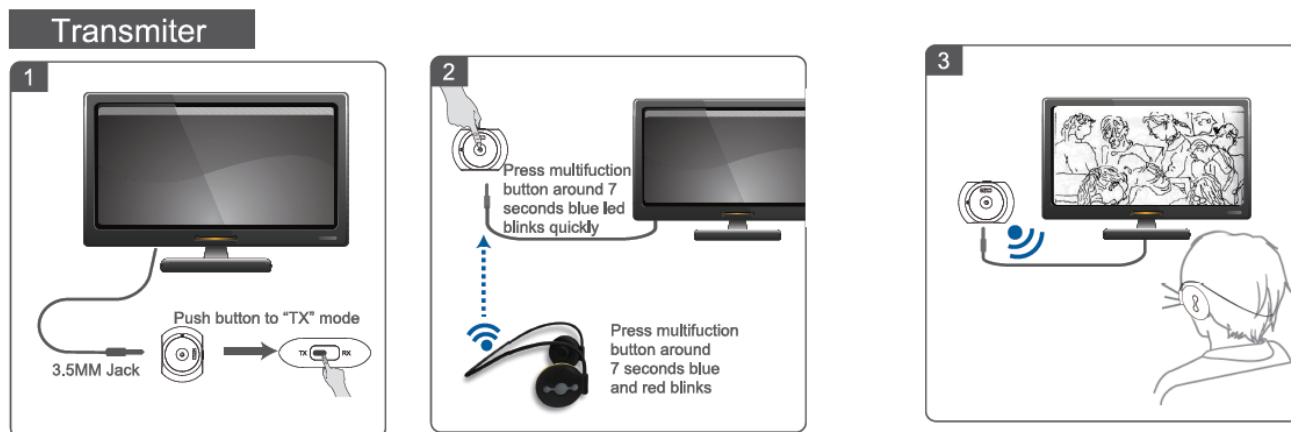
Pairing procedure:

- A. Plug the 3.5 mm audio cable into TC200'S 3.5 mm audio socket; and put plug the other end into the audio output of an audio source system.
- B. Ensure TC200 has pushed into TX mode, and the device is off.
- C. Put TC-200 and your Bluetooth stereo receiver device within 1 meter.
- D. Power on your Bluetooth stereo receiver device and put it into pairing mode.
- E. Press and hold TC200'S MFB button for about 5 -7 seconds until the LED light flashes blue quickly, indicating it is in pairing mode.
(**Notice:** For the first time use or first time power on after clear connection list, TC200 will automatically enter into pairing mode, the Blue LED light flashes quickly.)

F. Then TC200 will automatically search, pair and connect your Bluetooth stereo device.

G. After successful connection, the LED light will flash blue twice every 4 seconds.

H. Pairing is completed. Now you can enjoy wireless music.



Note:

1. The pairing mode will last 2 minutes. The transmitter will enter standby mode if no devices can be connected with 2 minutes
2. The TC200 can pair with stereo Bluetooth devices with PIN code "0000", "1111", "8888" or "1234".
3. Once power on, the TC-200 will be automatically connected with the last connected device.
4. The transmitter BTTC-200 will automatically switch off if no devices can be connected within 5 minutes.
5. Clear the pairing list: From off, press and hold the MFB button for about 12 seconds until red LED is on for 1 second and then blue LED is on for 1 second.
6. LED indicator instruction:

LED indicator	TC200 of TC200 under TX mode
Blue LED blinks continuously	Pairing mode, lasts for 2 minutes
Blue LED flashes every 1 second	Standby mode, not connected with device
Blue Led flashes twice every 4 seconds	Connected with a device
Red LED blinks	Low Power

We found most of the online technical support questions are caused by improper pairing. Please follow the instruction step-by-step.

6. Receiver, Turn On / Off

Pls. push the click button to RX mode from TX / RX positon, before power on.

TX or RX mode can not be changed after powering on Saturn.

Turn On: press and hold TC200's MFB button for around 5 - 7 seconds until the blue LED is on for 1 second.

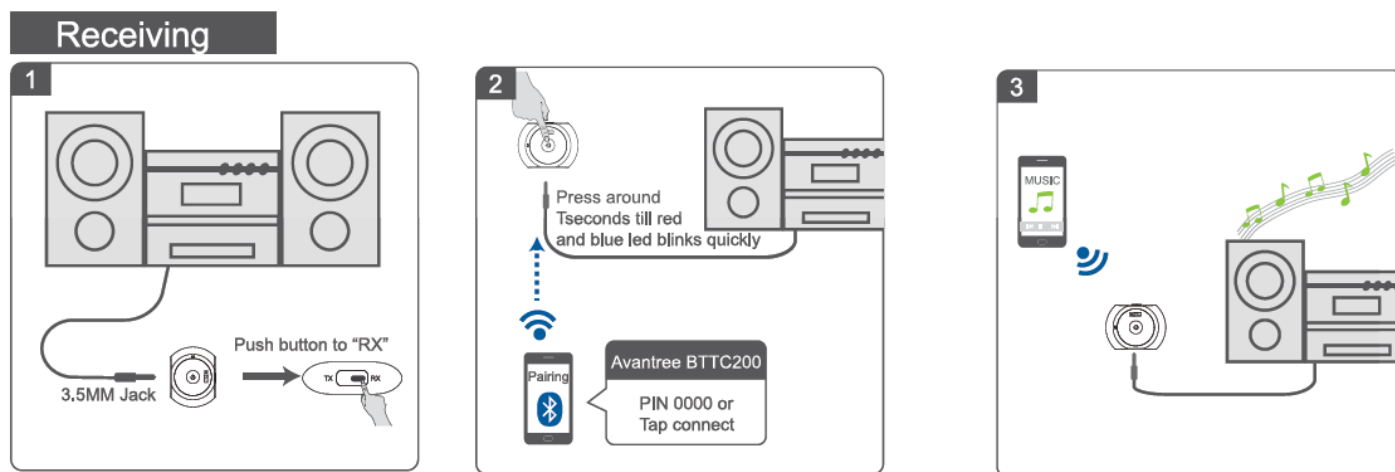
Turn Off: press and hold the MFB button of Saturn for around 3 - 4 seconds until the red LED is on for 1 second, and then go off.

7. Receiver, working with a Bluetooth device (Tutorial online)

7.1 Pairing procedure:

A. Plug the 3.5 mm audio cable into TC200'S 3.5 mm audio socket. Plug the other end into the audio input of your home hi-fi stereo system.

- B. Ensure TC200 has pushed to RX mode and the device is off.
- C. Put TC200 and your Bluetooth enabled phone within 1meter.
- D. Press and hold TC200's MFB button for about 6-8 seconds until the LED light flashes blue and red alternatively, which is in pairing mode.
- E. Make your phone into Bluetooth mode and Search the available device
- F. Once found "Avantree BTTC-200", follow the steps and enter pin code 0000 to pair when requested.
(Note: Different phone / tablets have different procedure to activate the Bluetooth function, and please make sure the device is visible to nearby device, for the device Bluetooth version above 2.1 no need to input pin code when pairing)
- G. Connect the TC200 to your phone.
- H. After successful connection, the LED light will flash blue twice every 4 seconds.



Note:

1. The pairing mode will last 2 minutes. The receiver will enter standby mode if no devices can be connected with 2 minutes.
2. The receiver BTTC-200 can pair with stereo Bluetooth devices with PIN code "0000", "1111", "8888" or "1234".
3. Once power on, the receiver BTTC-200 will be automatically connected with the last connected device.
4. The receiver BTTC-200 will automatically power off if no devices can be connected within 5 minutes.
5. Clear the pairing list: From off, press and hold the MFB button for about 12 seconds until red LED is on for 1 second and then blue LED is on for 1 second.

LED indicator	TC200 of TC200 under RX mode
Blue and Red LED blinks continuously and alternatively	Pairing mode, lasts for 2 minutes
Blue LED flashes every 1 second	Standby mode, not connected with device
Blue Led flashes twice every 4 seconds	Connected with a device
Red LED blinks	Low Power

7.2 Stream the music

After the receiver BTTC-200 is connected to the Bluetooth device, you can connect it to a 3.5mm stereo headset or stereo speaker with a 3.5mm to 3.5mm audio cable. Now you can listen to music and control **pause / play** of music by short pressing the MFB button once.

8. Product Specification

- *Bluetooth* V2.1+EDR
- Bluetooth profile supported: A2DP and AVRCP
- Operation Range: Class 2, 10 meters
- TX mode working time: 10 hours
- RX mode working time: 9 hours
- Standby time: up to 400 hours
- Charging time: about 2 hours
- Charging input voltage: DC 5V
- Battery: 270mAH rechargeable LI-polymer battery
- Weight: 48.5g
- Size: 50mm(L)x37mm(W)x13mm(H)

The working and standby times may vary when used with different mobile phones or other compatible Bluetooth devices, usage settings, usage styles and environments.

9. Safety Information

- To avoid any damage or malfunction of the device do not drop device from high places.
- Keep device away from humidity, water and any other liquid. If the device is exposed to water, moisture and other liquid, do not operate it to avoid any electrical shock, explosion and damage to the device or yourself.
- Do not place or keep this device near any heat source, such as, direct sun light, radiators, stoves or other apparatus which produces heat. It may cause explosion, degrade the performance and/or reduce battery life.
- Do not modify, repair or disassemble device at discretion (Especially battery: It may cause an explosion). Doing this will void the warranty.
- Do not place heavy objects on the device.
- Use only supplied and approved charger.
- Replacement or service must be done by qualified service center or manufacturer.
- Unplug this device when unused for long periods of time or during lightning storms.

CAUTIONS: ELECTRIC SHOCK HAZARD

The battery used in this device may present a risk of fire or chemical burn if mistreated.

10. Declaration of Conformity

10.1. EU

This product is CE certified according to the provision of the R&TTE Directive (99/5/EC).

Declare that this product is in compliance with the essential requirements and other relevant provisions of Directive 1999/5/EC.

10.2. Trademark Statement

The *Bluetooth* word mark and logos are owned by the Bluetooth SIG, Inc.

Avantree is a trademark owned by Avantronics limited.

10.3 FCC RF exposure

This equipment complies with FCC radiation exposure limits set forth for an uncontrolled environment .This equipment should be installed and operated with minimum distance 1.5cm between the radiator& your body.

This transmitter must not be co-located or operating in conjunction with any other antenna or transmitter.

11. Warranty

- To avoid any damage or device malfunction, do not drop the device from high places.
- Keep the device away from humidity, water and any other liquid. If the device is exposed to water, moisture and other liquid, do not operate it to avoid any electrical shock, explosion and damage to the device or yourself.
- Do not place or keep this device near any heat source, such as, direct sun light, radiators, stoves or other apparatus which produces heat. It may cause explosion, degrade the performance and/or reduce battery life.
- Do not modify, repair or disassemble the device (Especially battery: It may cause an explosion). Doing so will void the warranty.
- Do not place heavy objects on the device.
- Use only the supplied and approved charger.
- Service must be done by qualified service center or manufacturer.
- Unplug this device when unused for long periods of time or during lightening storms.

CAUTIONS: ELECTRIC SHOCK HAZARD

The battery used in this device may present a risk of fire or chemical burn if mistreated.

Online Tutorial & Technical Support

More information about this product and other Avantree Bluetooth products, including the *video user guide*, *product tutorial* and online technical support, please refer to www.avantree.com website.

Due to software update, there could be some changes on operations. Please always refer to Product Tutorial page in Avantree website for the latest features.

QDID:B015006

FCC ID: WJ5-BTTC200

Z-PKMN-TC200-0000V2