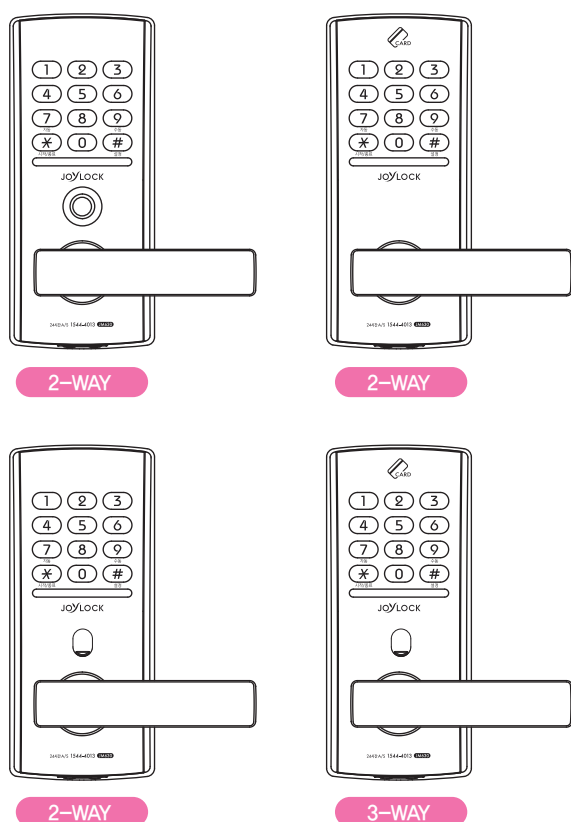


Main key user manual



UNICOR HIGHTECH CO., LTD
www.unicor.co.kr



- This manual may change without notice in case of product improvement.
- Product specifications are subject to change without prior notice.
- This manual may not be edited or changed without the manufacturer's prior permission

Caution

As this is a keyless digital door lock, damage may occur to parts of the dead lock system if it is not used according to the manual. Users should be fully aware of the manual and how to operate this product.

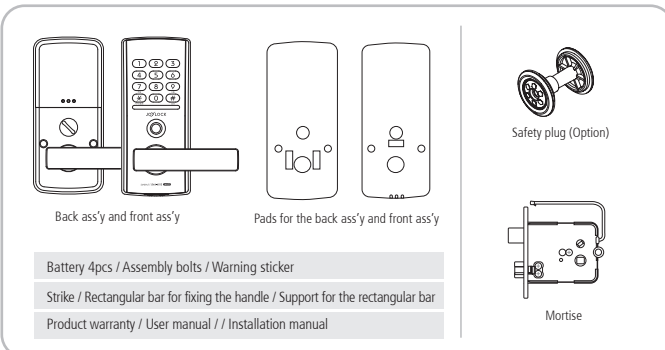
Safety precautions



The precautionary measures are for the safety of the user, for the prevention of property damage, and for the avoidance of any inconveniences due to an accident. These must be read and followed properly.

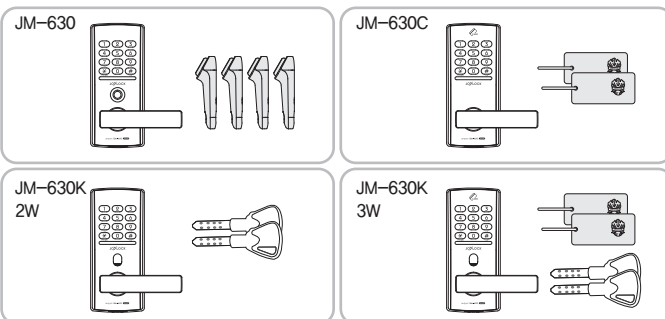
- Do not disassemble or alter the lock.
- Do not install where the distance over 5mm between the door and door frame.
- Please do not expose the secret code and change the secret code in regularly.
- Batteries should not be exposed directly to heat sources or flames, or submerged in water, because they may leak or explode, resulting in severe damage. Please do not use damaged batteries.
- Do not press using sharp tools or press numeric button excessively.
- Make sure the door is completely locked when going out.
- Place the batteries carefully and correctly according to their polarity (+/-). If the batteries are inserted in a wrong way, differently from the indicated direction or polarity, leakage or rupture could occur. Pay attention to it.
- Please do not mix old with new batteries or use different types.
- Always use new alkaline batteries.
- Do not clean the product with flammable materials such as alcohol, benzene or thinners. Such materials may damage the surface or cause a fire.
- Replace the current batteries with new ones within 1 week after the battery replacement notification melody sounded off for the first time.

Product composition



Components of each model

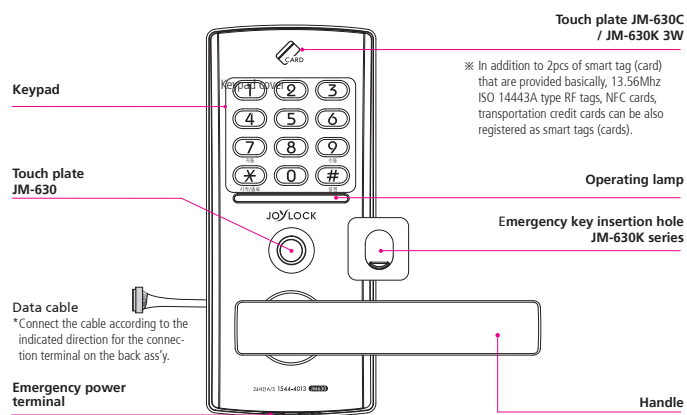
| Model | Door opening type | Emergency key |
|------------|---|---------------|
| JM-630 | 2way / secret code and smart tag (card) can be used | X |
| JM-630C | 2way / secret code and smart tag (card) can be used | X |
| JM-630K 2W | 2way / secret code and key can be used | o |
| JM-630K 3W | 3way / secret code, smart tag (card), and key can be used | o |



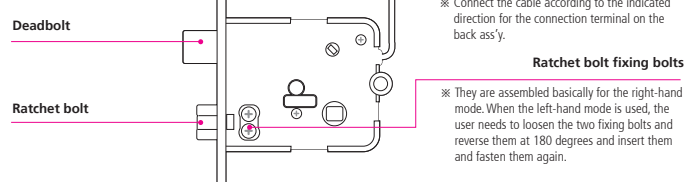
- The lifetime of the batteries is based on the result of the tests by the company and is not an absolute measurement. It will vary depending on the temperature and humidity of the installed locations as well as depending on the frequency of usage and the quality of batteries.
- The functions, design, and composition of the product may change without prior notification for the purpose of improving its quality.

Front ass'y(Front body)

※ When a specific model is described in (), it means that the currently said information is applicable only for the specific model.

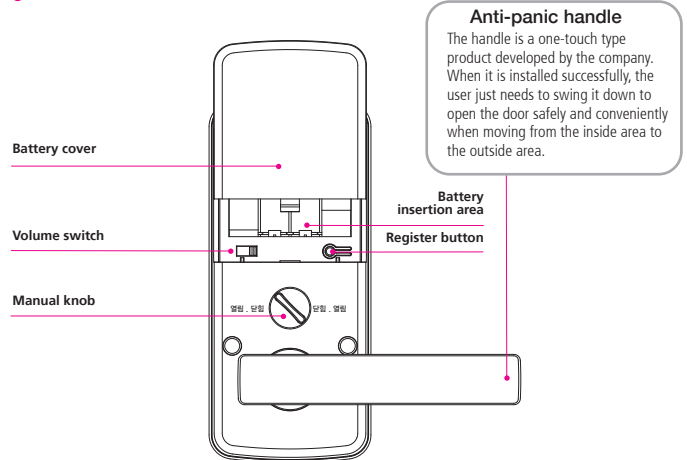


Mortise



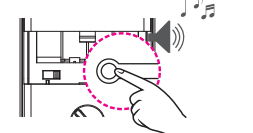
Right-hand door : Opening the door from the outside by pushing or pulling it with the right hand.
Left-hand door : Opening the door from the outside by pushing or pulling it with the left hand.
※ Upon shipment, the right-hand door mode is set to default, meaning that there is no need to go through the setting process when installing it for a right-hand door. If the door is a left-hand type, it is required to change the direction of the ratchet bolt of the mortise. Otherwise, the door will not be closed.

Back ass'y(Main body)



Registering and changing the secret code

1. Press the [Register] button.



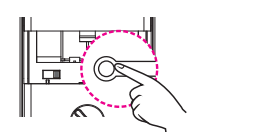
While the door is opened, open the battery cover of the back ass'y, and press the [Register] button one time (A short starting sound "Bibi~" will be generated).

2. Enter the new secret code for registration (3~20 digits).



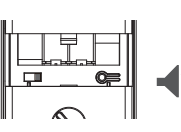
Enter the new secret code through the keypad of the front ass'y. Numerical characters of 3~20 digits, except for the * and # buttons.

3. Press the [Register] button



Press the [Register] button after entering the secret code.

4. Complete the registration.



When the secret code is registered normally, a melody "Biriri" will be generated, completing the registration.



When it is needed to check the secret code, it is required to keep the door open and press the [#] button to let the deadbolt come out. In this state, when the user enters the registered (new) secret code, the deadbolt will be retrieved as long as the door lock is in normal condition.

Auto re-lock function

If the user does not enter the premise within 7 seconds after unlocking the door from the outside by using the secret code or the key, or if the user does not go out within 7 seconds after unlocking the door by pushing the door handle down, the auto re-lock function will be activated, causing the door to be automatically locked.

Security alarm

When an incorrect secret code is entered 3 times or more, the security alarm function will be activated, generating an alarm sound of 80dB or higher for 30 seconds and stopping the system operation for 30 seconds.



- If no secret code is entered within 7 seconds after the [Register] button is pressed, the registration process will be cancelled while an error sound "Biriri~" is generated.
- Upon shipment, the secret code "1234567890" is set to default. Once the product is installed, the secret code must be replaced with a new one for using the door lock.
- Do not let others know the secret code. Change it periodically.
- In preparation for an emergency situation in which there is no way to enter the locked premise due to loss of the secret code, it is recommended to carry the additional digital touch key (Required to register it), which will be provided for each model, or the smart tag (card) (Required to register it) always, or keep it in a safe area (in a car).



- Even when a secret code is changed, the existing digital touch keys or smart tags (cards) can be used without going through an additional change process.
- When the batteries are replaced, the existing secret code will not be deleted thanks to the function of memory.
- When a new secret code is registered, the previous one will be automatically deleted.

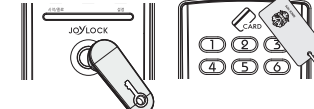
Registering(again) the digital touch key/ smart tag(card)

1. Press the [Register] button.



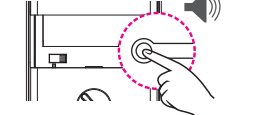
While the door is opened, open the battery cover of the back ass'y, and press the [Register] button one time (A short starting sound "Bibi~" will be generated).

2. Register new digital touch keys or smart tags (cards).



Bring the digital touch keys or smart tags (cards) into contact at the touch plate of the front ass'y in order. When each key is registered normally, a short signal sound "Bibi~" will be generated.

3. Press the [Register] button.



Press the [Register] button after registering all the digital touch keys and smart tags (cards).

4. Complete the registration.



When the registration is completed normally, a melody "Biriri" will be generated, completing the registration.

5. Check the registration.

While the door is opened, the user must check whether the registered digital touch keys or smart tags (cards) are working well before closing the door.



- Once the [Register] button is pressed, if neither the digital touch key nor the smart tag (card) is brought into contact within 7 seconds, an error sound "Biriri~" will be generated, cancelling the registration process. When the registration is completed, while the door is opened, the user must check whether the door lock works normally.
- If an error sound is generated, during the registration process, for notifying that the time limit is exceeded, it is required to start the registration process from the initial stage.

Deleting the digital touch key and smart tag (card).

This function deletes the registered digital touch keys and smart tags (cards) for the sake of security.
① Open the battery cover and short press the [Register] button one time (A short signal sound "Bibi" will be generated).
② Press the number "0" button of the front ass'y keypad for 5 seconds.
③ Then, a sound "Biriri" will be generated for notifying that the deletion is completed.

Useless the digital touch key and smart tag (card)

When the digital touch key or smart tag (card) that the user currently carries is registered again following loss of the previous one, the previous one will be deleted while only the currently registered one can be used.

Prevent micheif and Hacking

When an unregistered touch or smart tag (card) is used 3 times or more, the security alarm function will be activated, generating an alarm sound of 80dB or higher for 30 seconds and stopping the system operation for 30 seconds.



- The wait time for registering a digital touch key or smart tag key is about 7 seconds. When 7 seconds pass, the registration sound will not be generated, requiring the user to go through the registration process again (Example: When there are 4pcs of keys, they need to be registered consecutively).
- If the user lost any one of the digital touch keys or smart tags (cards) that the user currently carries, the user is immediately required to utilize the function of deleting or neutralizing the digital touch key (smart tag (card)) to prepare for possible security accidents.



- It is possible to register up to 50pcs of digital touch key or 50pcs of smart tag (card) in the door lock.
- When users want to purchase additional digital touch keys or smart tags (cards), they can purchase them from the selling shops or the company's customer support center and register them.

Locking the door from the outside

When the auto lock function is set.



Upon shipment, the function is set to default. When the door is closed, it will be automatically locked within 3 seconds due to the function of the auto lock sensor.

When the manual lock function is set.



Press the [#] button. Then, the door will be locked.

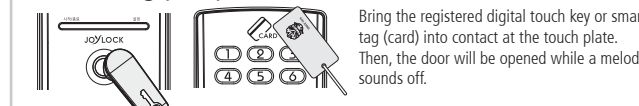
Opening the door from the outside

Opening the door by using the secret code.

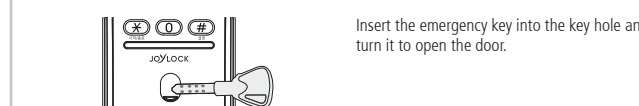


Press the [*] button and enter the secret code and press the [*] button. Then, the door will be opened while a melody sounds off.

Opening the door by using the digital touch key or smart tag (card).



Opening the door by using the emergency key.



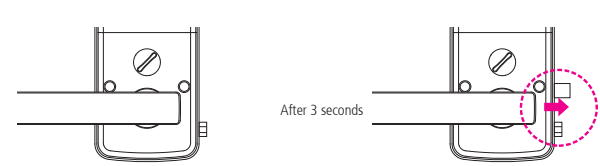
※ When a transportation credit card or a NFC card needs to be used, it is required to press the [*] button and bring it into contact at the touch plate.



Users are wholly responsible for all the damage due to exposure or loss of the secret code, digital touch key, smart tag (card) or the emergency key. Users need to take extra precautions in keeping them safe.

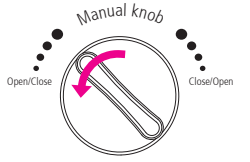
Locking the door from the inside

When the auto lock function is set.



When the door is closed, it will be automatically locked within 3 seconds due to the function of the auto lock sensor.

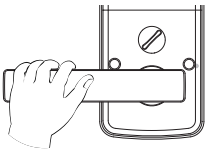
When the manual lock function is set.



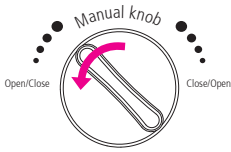
Each time the user turns the manual knob to the left or right direction, the door will be opened or closed accordingly.

Internal double lock function

Opening the door by using the handle.



Pull the handle of the back ass'y down slightly. Then, the anti-panic function will be activated, disabling the locked state and opening the door.



Turn the manual knob to the left or right direction to open the door.

Setting the auto/manual lock function

When setting the auto lock function.



1. Short press the [Register] button one time (a short signal sound "Bibi" will be generated).
2. Press the number [7] button.
3. Press the [Register] button.
4. Then, the auto lock function will be set while a sound "Bi" is generated for notifying of completion (* Upon shipment, the function is set to default).

When setting the manual lock function.

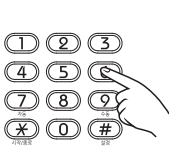
1. Short press the [Register] button one time (a short signal sound "Bibi" will be generated).
2. Press the number [9] button.
3. Press the [Register] button.
4. Then, the manual lock function will be set while a sound "Bi" is generated for notifying of completion.

What is the manual lock function?

The function will be very useful for offices where people enter and exit frequently. In this mode, the door will not be locked even when the door is closed. While the mode is maintained, users can lock the door by pressing the [*] button to lock the door when leaving the office for a business trip or leaving for home, and they can enter the office by opening the door by entering the secret codes or using the digital touch keys or smart tags (cards) when coming back from a business trip or showing up for the day. It is also possible to shift to the auto lock mode easily at any time.

Imaginary code system to prevent exposure secret code (Imaginary code function)

This function will be useful when the user needs to enter the real secret code even when another person is watching nearby. This function allows the user to enter the imaginary code (imaginary numbers) together with the real one, making it impossible for the person watching nearby to recognize the real one, helping prevent the secret code from being exposed.



How to use the function (When the secret code is 1234)

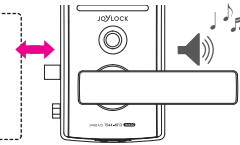
The user just needs to enter the real secret code 1234 at the end, after random numbers are entered. Take note that the first digit of the real secret code cannot be part of the random numbers. In this case, "1" cannot be part of the random numbers entered prior to the real secret code because "1" is part of the current secret code.

- Example of how to use it correctly: 78462 + 1234 for normal operation.



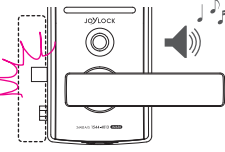
The total number of digits combining the imaginary code and the real secret code should be 3-20 digits. If the user presses the first digit of the secret code when pressing the imaginary code, the user must enter the remaining part of the real secret code continuously.

Notification of the door opened



While the door is in the auto lock mode, if the door is opened, this function will notify of the opened state to the user. A signal sound "Biriri~" will be generated two times with an interval of 7 seconds to notify of the opening.

Warning the jam of the deadbolt



In a situation where the door cannot be locked normally even when it is closed because of the jam of the deadbolt, and while coming out due to abnormal installation and irregularities with the door, this function will notify of the problem to the user. If the user keeps failing to lock the door 3 times, a melody "Biriri~ Biriri~ Biriri~" will sound off.

High-temperature warning system in preparation for fires

What is the high-temperature warning system?system?

When the product detects temperature of 60±(±5) due to a fire inside the locked premise, a warning sound of 80dB or higher will be generated and the door will be automatically opened within 5 seconds. In addition, the manual knob is mounted according to the KS standards, making it possible for people to escape the locked premise by using it simply in an emergency situation like a fire with enhanced safety.

High-temperature warning

The function will be activated when the temperature sensor, which is installed on the back ass'y, detects heat (About 60±). The operating state will vary depending on the environment and state of the installation.

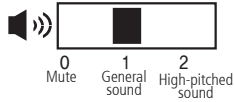
Unsetting the high-temperature warning

The warning state will be disabled when 3 minutes pass after the alarm sound is generated initially, or when the power is reset.



60°C ±5°C is not an absolute measurement for deciding whether the current temperature is high or low. The reference value may vary depending on the mechanical conditions. When the high-temperature warning system is activated, the door will be automatically opened even when the forced lock function is set.

Volume control



Open the battery cover and shift the volume switch to 0, 1 or 2 individually for mute, general sound or high-pitched sound.
※ Upon shipment, level 1 for general sound is set to default.

Mute function



What is the mute function?

The mute function is to temporarily control the operating sound to open the door quietly when needed to use the door at an apartment or a common housing by entering the secret code without causing other people to suffer from the operating sound at night.

How to use.

Press the [#] button first, and press the [*] button, the secret code and the [*] button in order to set the mute function that will prevent the operating sound from being generated.

Example of usage: When the secret code is 1234.

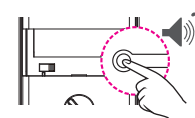
- Normal mode: Press the [*] button, the secret code and the [*] button. Then, the door will be opened with a melody.
- Mute function: Press the [#] button, the [*] button, the secret code and the [*] button. Then, the door will be opened quietly without a melody.

Forced lock from the inside

What is the forced lock from the inside?

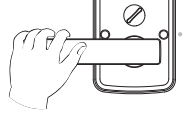
When all the family members are already in the house, this function makes it possible to maximize the level of security by stopping the operation of the front ass'y temporarily in order to enhance security. When the function is set, it will be impossible to open the door from the outside even by using the registered secret code or digital touch key (smart tag (card)).
※ In preparation for an emergency situation, it is still possible to open the door from the outside by using the emergency key even when the forced lock function is set.

Setting



While the door is locked, open the battery cover of the back ass'y and press the [Register] button for 3 seconds. Then, the function will be set while a setting sound "Biriri~" will be generated.

Releasing



1. From the inside
Pull the handle down from the inside. Then, the anti-panic function will be activated, making it possible for the user to exit by opening the door normally while the forced lock function is automatically disabled. Press the [Register] button for 2 seconds or longer. Then, the forced lock function can be also disabled.

2. From the outside

In preparation for a situation in which elderly people or kids set the forced lock function from the inside accidentally, there is a function available for unsetting the forced lock mode from the outside.

① Press the [*] button. → ② Enter the registered secret code. → ③ Press the [#] button. → ④ Enter the registered secret code again. → ⑤ Press the [*] button. Then, door will be opened, disabling the force lock function.

Forced lock from the outside

What is the forced lock from the outside?

This function helps enhance the level of security when the user has to leave the premise for a long period of time. If someone tries to drill a hole in the entrance door or the fireproof door and insert some instrument inside the premise to move the anti-panic handle down or operate the manual knob to enter the premise illegally, a powerful warning sound of 80dB or higher will be generated to prevent the unauthorized entry if it is attempted.

Setting



While the door is locked, press the [*] button of the front ass'y and press the number [0] button for 5 seconds. Then, the forced lock function will be set while a setting sound "Biriri~" will be generated.

Releasing



When the registered secret code is entered, or when the registered digital touch key or smart tag (card) is brought into contact, opening the door normally, the forced lock function will be automatically disabled.

Auto setting of the hand type

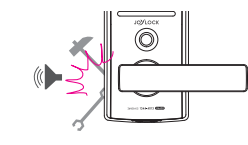
There is no need to go through an additional registration process when installing the product initially or when the batteries are removed and placed back again, the product will recognize the hand type automatically, making it easy to set the function completely.

Trespass / Breakage alarm

What is the forced lock from the inside?

While the door is closed, if someone tries to break in or enter illegally by opening up a gap in the door, causing the deadbolt to be removed forcibly from the auto locking sensor, this function will generate a very powerful alarm sound of 80dB or higher for 3 minutes to notify of the dangerous situation.

Activated



If the door is unstable due to impurities in the door frame, the deadbolt may come out while the door is not closed completely, causing an unauthorized entry alarm to be set off. Considering this, users must check the operating state of the deadbolt of the digital door lock before opening and closing the door. Users need to understand how to disable the unauthorized entry and damage alarm.

Unset



1. The alarm will be disabled when going through the authentication process using the registered secret code or digital touch key (smart tag (card)).
2. The alarm will be also disabled when the power is reset.



If the door is unstable due to impurities in the door frame, the deadbolt may come out while the door is not closed completely, causing an unauthorized entry alarm to be set off. Considering this, users must check the operating state of the deadbolt of the digital door lock before opening and closing the door. Users need to understand how to disable the unauthorized entry and damage alarm.

Battery replacement notification

What is the battery replacement notification function?

When the batteries need to be replaced, a melody "Open the east, east, east gate~ Open the south, south, south gate" will sound off while operating the product. The melody lets the user know about the need for replacing batteries.

If the melody sounds off when operating the system, it is required to immediately open the battery cover of the back ass'y, and replace all the batteries (4pcs) with new genuine 1.5V LR6 AA alkaline batteries that can be purchased at nearby stationary stores or convenience stores.



- Must use general batteries, not rechargeable ones.
- Take precautions in placing the batteries in the compartment in order to prevent leakage or rupture that could occur when they are placed wrongly.
- Must replace the old batteries all with new ones, not partially. Do not use new ones with discharged ones together.
- It is designed to operate with the rated voltage 6V. If low voltage (4.2±0.3V) is detected, a melody will sound off.
- After the replacement, if the door lock stops working in a short period of time or the batteries are discharged, the batteries could be defective. It is required to contact the shop where the user purchased batteries and get new ones as replacement ones.

Emergency power supply

What is the emergency power supply?

When the batteries of the door lock are completely discharged, making it impossible to open the door from the outside by using the secret code, digital touch key, or the card key, this function will help supply the emergency power by using a 9V battery from the outside.



How to use

- ① Purchase a 9V battery in a rectangular shape from nearby stationary stores or convenience stores.
- ② Bring the battery into contact at the 9V battery input terminal at the bottom of the front ass'y, and press the [*] button while maintaining the contact. If the power is supplied normally, a sound "Bibi~" will be generated and the keypad will be turned on.
- ③ Enter the secret code and then press the [*] button, or bring the registered digital touch key or smart tag (card) into contact. Then, the door will be opened.



- It is OK to bring a 9V battery as an emergency power into contact regardless of the + and - polarities.
- When it comes to a key type model, it is possible to enter by using an emergency key even in this situation. That is why it is recommended to carry the emergency key usually or keep it in a safe place (in a car).
- The emergency power can be supplied when keeping the 9V battery into contact at the input terminal (not rechargeable).
- Replace all the discharged batteries right after supplying the emergency power.

Standard of the product

| Classification | Specification | Remarks |
|--------------------------|---|--|
| Front ass'y (Front body) | 170W X 73H X25D mm | Rated voltage: DC 6V Working temperature: -20°C to 60°C Sensor working temperature (High temperature): 60°C |
| Back ass'y (Main body) | 170W X 73H X30D mm | |
| Digital touch key | 4pcs (2way touch model) / Possible to register up to 50pcs. | |
| Smart tag (card) | 2pcs (2way tag model) / Possible to register up to 50pcs. | Will run for about 10 months when used 10 times a day (6~8 months in case of card models) |
| Battery | 1.5V AA LR6 alkaline battery x 4 | |
| Type | Non-key type | D-NF-T-NK-M (Direct current-Non-fireproof-Temperature sensor-Non-key-Main key). Only applicable for JM-630/JM-630C |
| | Key type | D-NF-T-K-M (Direct current-Non-fireproof-Temperature sensor-Key-Main key). Only applicable for JM-630K |

* The lifetime of the batteries is based on the result of the tests by the company and is not an absolute measurement. It will vary depending on the temperature and humidity of the installed locations as well as depending on the frequency of usage and the quality of batteries.

* The functions, design, and composition of the product may change without prior notification for the purpose of improving its quality.

| Types of consumer damage | Content of compensation | |
|--|---|---|
| | Within the warranty period | After the warranty period |
| The product is used in normal conditions | Failure occurs within 1 month from date of purchase | Product replacement |
| | Failure occurs within 1 year from date of purchase | Free-of-charge repair |
| | Same failure occurs 4 times or more | Free-of-charge repair / Paid repair |
| | The repair parts are not available at the main office | Product replacement / Replacement after depreciation based on a fixed rate. |
| Mistakes and mishandling by the user | Not the case of failure | Paid repair |
| | Mistakes and mishandling by the user | |
| | Defective installation, and other reasons | |

※ Details of mistakes and mishandling by the user

| Not the case of failure | Mistakes and mishandling by the user | Other reasons |
|--|---|---|
| ● When needed to break the product due to the loss of secret code. ● When the door is sagging, or installation is defective, requiring the product to be reinstalled. ● Request for checking the product for possible problems while there is no specific symptom of a failure. ● Problems in operation occur after the user installs the product directly. | ● A visit for repair is needed as there are mistakes and mishandling by the user such as mistakes in replacing batteries and unskillful use of the product. ● Defective operation due to poorly inserted batteries and use of defective batteries. ● Failure and breaking due to the use of the product for other purposes. ● Failure and breaking caused by the user on purpose or from an external impact. | ● Failure and damage due to natural disasters such as fires, floods, and damage from sea water. ● Penetration by water, condensation and injection of chemicals, requiring the internal circuits to be replaced, and causing failures. |

Warranty

- ◎ The warranty period for all of the company's products is 1 year from the date of purchase indicated on the warranty certificate.
- ◎ The details of all kinds of services by the company is based on the damage compensation criteria of the consumer protection act by the government
- ◎ Even during the warranty coverage, users need to pay (the cost for trip, technical support and parts) for some services if they are in the category of chargeable services.
- ◎ The warranty is applicable only in the local area.
- ◎ Users must submit the warranty certificate that contains the installation information when needed to request a service.
- ◎ If the warranty certificate is not available, users need to submit a receipt, a credit card receipt or a cash receipt instead (Except for a simple receipt)
- ◎ If it is impossible to show the purchase date, the warranty period will be applied by taking into consideration the product's manufactured date + expiration period (6 months)

Unicor Hitech

62 (642-3, Gojan-dong / 72B-4L Namdong Induspark), Euncheon-ro, Namdong-gu, Incheon, Korea
Customer Support Center: