
Mobile Viewer's Access Instruction

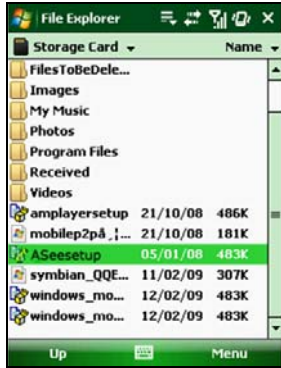
Mobile Viewer's Access Instruction

Mobile Viewer's Access Instruction

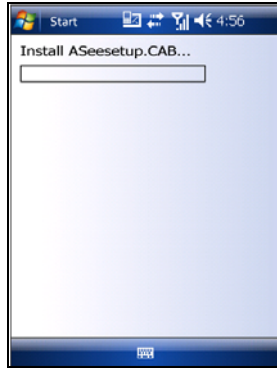
The DVR is currently compatible with mobile phones running Windows Mobile, Symbian, Iphone, Blackberry and Androids operating systems. Below are these Mobile Viewer's installation procedures.

1. Windows Mobile :

1) First you need to copy a program named as "Aseesetup.CAB" that is included on the CD provided by the DVR to the mobile phone.



Picture 1



Picture 2



Picture 3

2) Click the program "Aseesetup" shown as Picture 1 and choose an installation location shown as Picture 3 after the initialization.

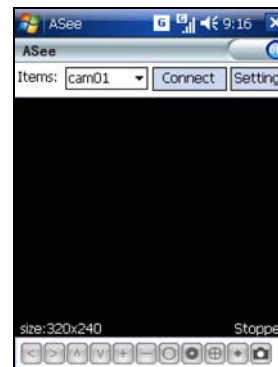
3) Click [Install] button to start the installation processing shown as Picture 2.

4) After finishing the installation, click the icon named "Asee" shown as Picture 4 to run the program.

5) Now you are allowed to enter into the program screen shown as Picture 5.



Picture 4



Picture 5

- **【CH】** click [Pull-down] menu to select the channel you need to monitor.
- **【Connect】** click the button to enter into the live image of the channel you selected
- **【Setup】** click the button to allow you set parameter of the mobile viewer.
- Function buttons in the bottom from Left to right in turn are: **【PTZ Direction (left, right, up, down)】**; **【Area Selection (ZOOM+, ZOOM-)】**; **【Focus (focus +, focus-)】**; **【Iris (+,I -)】**; **【Snapshot】**.

Note: Please firstly make sure you have right PTZ parameter setting (details please refer to User Manual-Section 5.2.6.3) on DVR, then you could control PTZ camera through your mobile phone.

Mobile Viewer's Access Instruction

The captured images will be saved to the defaulted path (Explorer→Program Files→Moveeye→Photo file).

If you use this program first time or need to change parameter settings, please click [Setup] button to enter into the window shown as Picture 6.



Picture 6

- **User's Name:** herein indicate the user name which have been set on DVR-[Mobile Set] menu.
 - **Password:** herein indicate the password which has been set on DVR-[Mobile set] menu.
 - **Server:** indicate public IP address connected to DVR or dynamic domain name used by DVR
 - **Port:** indicate the server port which has been set to your DVR.
 - **Notes:** enter one channel number you want to monitor
- Click **【ok】** to confirm the above setting , and system will return back the previous menu.

- **Auto-connect:** When tick-selecting [Auto-Connect] option, the mobile phone will be auto-connected to the DVR.
- **History:** Clicking the button will allow you auto-record all the log histories.

Click any area of screen to toggle display modes between normal view and full screen.

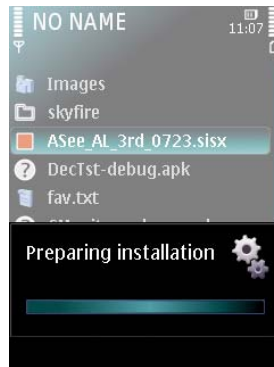
2. Symbian System Mobiles:

1) First you need to copy a program named as "ASee_AL_3rd_0723.sisx" or "See_AL_5th_0723.sisx" that is included on the CD provided by the DVR to the mobile phone (shown as Picture 7). Generally the program is defaulted to save into mobile storage card.

Note: "See_AL_3rd_0723.sisx" apply to S60 - The 3rd edition operate system Mobile, and "See_AL_5th_0723.sisx" to S60 - The 5th edition operate system Mobile



Picture 7



Picture 8



Picture 9

- 2) Click the program "ASee_AL_3rd_0723.sisx" to start the installation shown as Picture 8
- 3) Choose Phone memory or SD card as an installation location shown as Picture 9.
- 4) Click [Continue] button to make sure the application program you installed may visit network or dial phone when popping-up the dialog box shown as Picture 10.
- 5) After successful installation system will prompt you "Installation finished" shown as Picture 11.
- 6) If the program is installed into SD card, please enter into **【Application】** menu to find [Asee] icon shown as Picture 12.

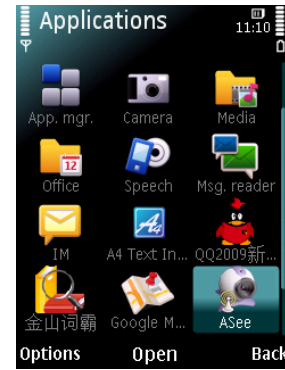
Mobile Viewer's Access Instruction



Picture 10



Picture 11



Picture 12

7) Click [Asee] icon to run the program, and then you will enter into the interface shown as Picture 13.



Picture 13

(Function buttons in the bottom in turn are:)

1	CH 1; CH 2 ; CH3; CH 4
2	PTZ Direction :left, right, up, down
3	PTZ Lens control: Focus+/-, Zoom+/- and Iris+/- from left to right in turn.
4	Play Bar: Play/Pause, Full screen, Snapshot, Setup, Next CHs Group and Quit button from left to right in turn

Note: The snapshot images will be saved to the defaulted path-"File manager/Images".

8) For first time using or Need some change on the Parameters, click the **【Setup】** button, you will enter into the window shown as Picture 14; or, Click [Play] button to enter into live display.

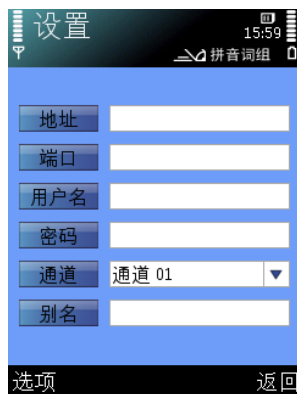


图 14

- **Address:** herein indicate public IP address connected to DVR or dynamic domain name used by DVR.
- **Port:** indicate the server port which has been set to your DVR.
- **User's Name:** herein input the user name which has been set on DVR-[Mobile Set] menu.
- **Password:** herein input the password which has been set on DVR-[Mobile Set] menu.
- **Channel:** select one channel you want to monitor
- **User Defined:** Enter channel title named by you.
- **Option:** include playback list and history list

3. Iphone:

- 1) Visit Apple website <http://www.apple.com/itunes/> to download & install the iTunes program.
- 2) Run the iTunes program, and then click the Menu- [Store→Search] to enter into its sub-menu.
- 3) On the [Search] mode, enter the characters "ASee" to search the program "ASee".

Mobile Viewer's Access Instruction

- 4) Download and install the "ASee" program.
- 5) After finishing installation, [ASee] icon will be displayed to mobile phone interface shown as Picture 15.



Picture 15



图 16

Picture 16

(3) We have introduced Monitor point setting in the previous Sybian and Windows system setting. The setting method for Iphone is same as the Sybian and Windows system. Please refer to the previous section.



图 17

- ① Channel select
- ② PTZ Direction (left, right, up, down)
- ③ Area Selection (ZOOM+, ZOOM-
- ④ Focus (focus +, focus-)
- ⑤ Aperture (I+,I-),).
- ⑥ Function buttons from left to right in turn are: Play/Pause, Snapshot, setup, Next CHs Group and help.

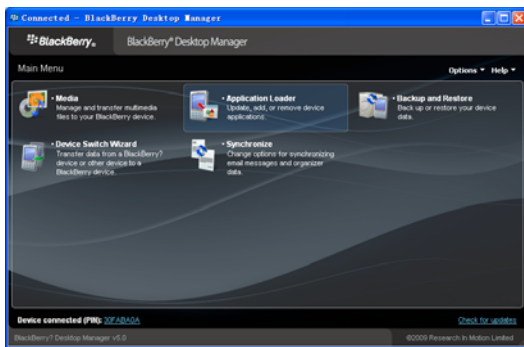
- ① Enter device title
- ② Enter IP address of the DVR
- ③ Enter DVR web port
- ④ Enter user name of DVR
- ⑤ Enter password of DVR
- ⑥ Click the button to preview History record

Mobile Viewer's Access Instruction

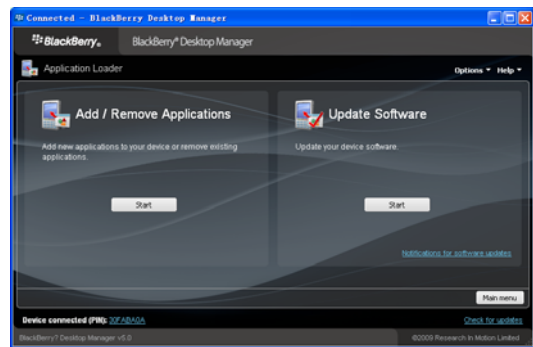
Picture 17

4. Blackberry mobile:

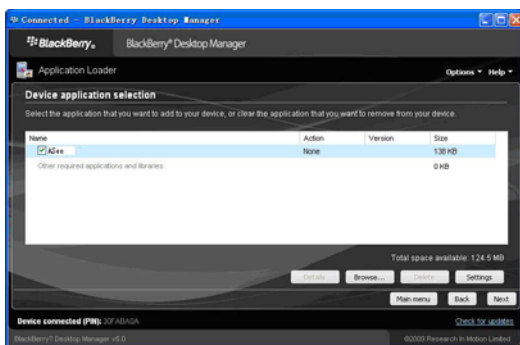
- 1) Download and install the Blackberry Desktop Manager on your PC
- 2) Connect your Mobile to your PC via USB cable
- 3) Open the Desktop Manager
- 4) Choose [Application Loader] from the Main Menu shown as Picture 18
- 5) Click [Start] Button on the **【Add/Remove application】** menu shown as Picture 19
- 6) Click [browser] button and tick-select [ASee.alx] file shown as Picture 20
- 7) Click [Finish] button to finish the installation shown as Picture 21.



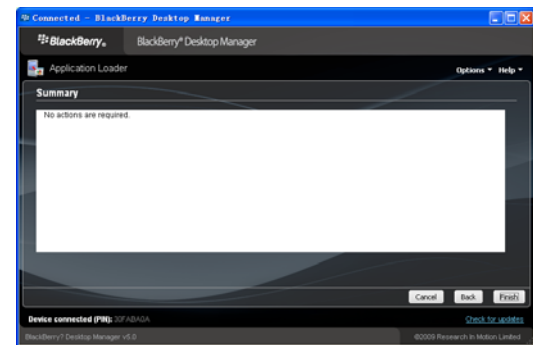
Picture 18



Picture 19



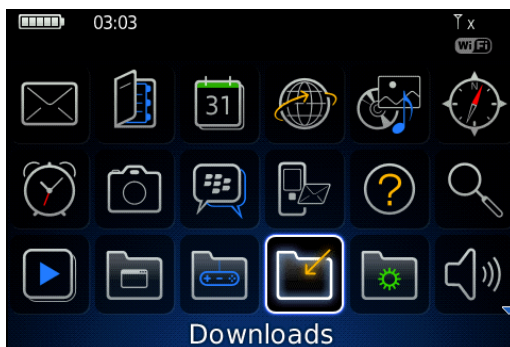
Picture 20



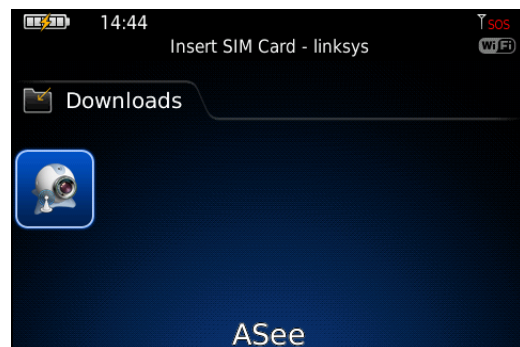
Picture 21

Setup and operation on the Blackberry phone viewer

- 1) The Blackberry viewer will be installed to the [Downloads] directory shown as Picture 22.
- 2) Enter into the [Downloads] directory, and then click the [ASee] icon shown as Picture 23.



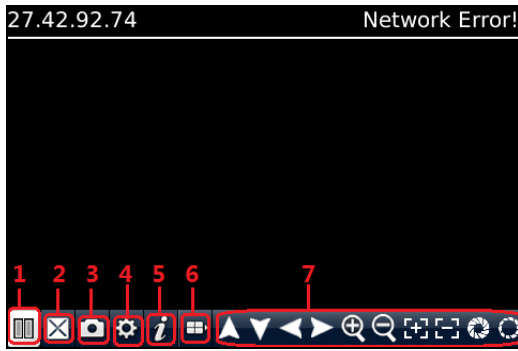
Picture 22



Picture 23

Mobile Viewer's Access Instruction

3) Enter into the below interface.



- 1 ---Connect/disconnect
- 2 ---full screen
- 3 ---snapshot
- 4 ---setup
- 5 ---help
- 6 ---Next CHs Group
- 7 ---PTZ Control

Picture 24

4) Enter the Monitor DVR info in the below Setup Menu;

A screenshot of a 'Setting' menu. It has three sections: 'Server info' with fields for Name, Address, and Port; 'User info' with fields for User ID and Password; and 'Network info' with a 'NetworkType' dropdown menu currently set to 'WIFI'. At the bottom are 'save', 'cancel', and 'history' buttons.

Picture 25

A screenshot of the 'Setting' menu with the following values filled in: 'Server info' Name: '9008', Address: '27.42.92.74', Port: '18004'; 'User info' User ID: 'admin', Password: '*****'; 'Network info' NetworkType: 'WIFI'. The 'save', 'cancel', and 'history' buttons are at the bottom.

Picture 26

4.1 Select the Network Type supported by Blackberry phone.

A screenshot of the 'Setting' menu. The 'NetworkType' dropdown menu is now open, showing 'WIFI' and '3G' options. The '3G' option is highlighted with a blue background. The other fields and buttons remain the same as in the previous screenshot.

Picture 27

Mobile Viewer's Access Instruction

- 4.2 Click [Save] button to save the above setting, and system will return back to Live display.
- 4.3 Click the [History] button to enter into the History List shown as Picture 28.
- 4.4 Highlight one record and click [Enter] button to enter into pop up menu. When selecting [Open] option, system will directly be connected to the DVR and defaulted to display the CH1.

History	
name: 9008	▲
name: d9216h	
name: 9008	
name: 9008	
name: 9008	
name: 9008	
name: 9008	
name: 9008	
name: 9008	
name: 9008	

Picture 28

History	
name: d9216h	
name: 9008	
name: 9008	
name: 9008	
name: 9008	
name: 9008	
name: 9008	
name: 9008	
name: 9008	
name: 9008	
name: 9008	▼

Open

Edit

Delete

Switch Application

Full Menu

Picture 29

- 4.5 When selecting [Edit] option, system will allow you edit the history record.
- 4.6 When selecting [Delete] option, the history record will be deleted.

Setting	
Server info	
Name	d9216h
Address	125.89.62.187
Port	19002
User info	
User ID	admin
Password	*****
Network info	
NetworkType	WIFI ▼
save cancel	

Picture 30

History	
name: d9216h	
name: 9008	
name: 9008	
name: 9008	
name: 9008	
name: 9008	
name: 9008	
name: 9008	
name: 9008	
name: 9008	
name: 9008	▼

? [27.42.92.74:18004], Do you want to delete this history?

Yes

No

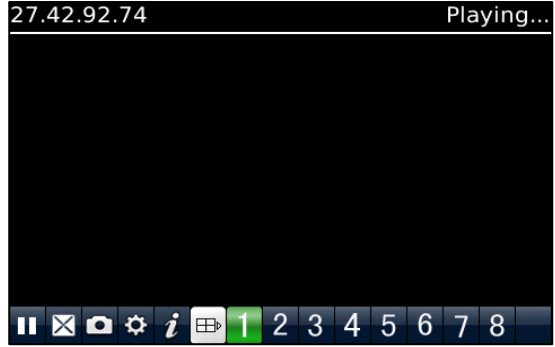
Picture 31

- 5) Click [Next Page] icon to search [Channel] option shown as Picture 32 and Picture 33, and then choose the channel you want to display.

Mobile Viewer's Access Instruction



Picture 32



Picture 33

6) Click [Full screen] icon to enter into full screen display mode, again click the [Trackball] button of mobile to quit the full screen mode.

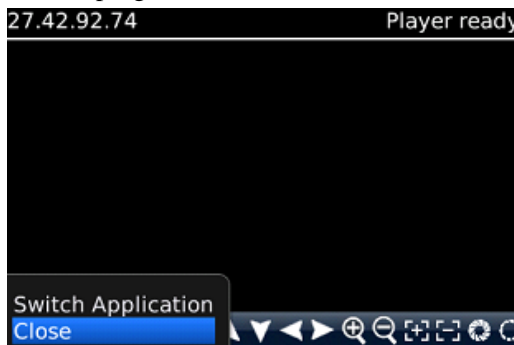
7) Click [Next page] button to find the [PTZ Control] icon and enter into the mode. Now you could freely control your PTZ camera through your Mobile phone.



Picture 34

8) Click [Help] button to view the software's Help instruction.

9) Click [Close] button to exit the program shown as Picture 35.



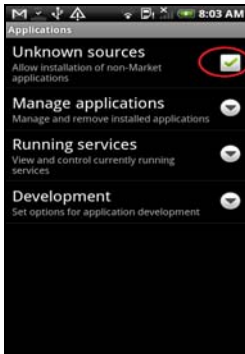
Picture 35

5. Androids Mobile

Please make sure the software environment support on your Android Mobile, such as Apkinstaller.

1. Make sure your mobile have been connected to network and could download the software.

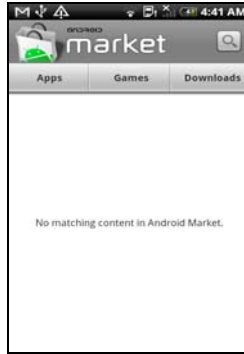
Mobile Viewer's Access Instruction



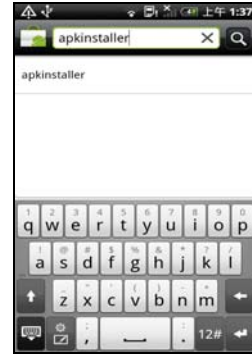
Picture 36



Picture 37



Picture 38

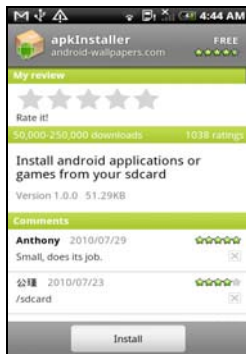


Picture 39

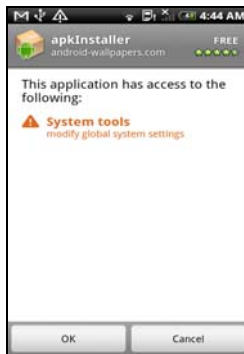
2. Enter into [Program] option and highlight [E-market] icon shown as Picture 37.
3. Enter into the [E-market] interface shown as Picture 38.
4. Click [Search] icon on the upper right corner and input "Apkinstaller" shown as Picture 39, to search the Apkinstaller program.



Picture 40



Picture 41



Picture 42

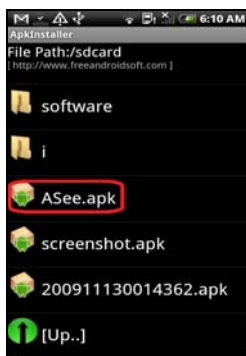


Picture 43

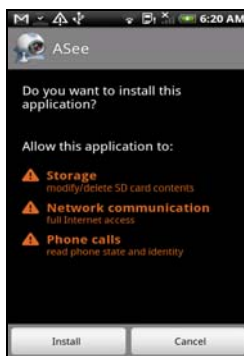
5. Highlight and install the program you searched shown as Picture 40 and Picture 41
6. Follow up the installation steps shown as Picture 42 and Picture 43



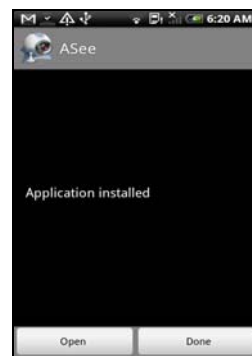
Picture 44



Picture 45



Picture 46



Picture 47

7. Enter into [Program] file and click [Apkinstaller] icon shown as Picture 44
8. Find the ASee.apk file you want to install shown as Picture 45
9. Click the software to install to your phone shown as Picture 46 and Picture 47.
10. Enter into [Program] option to click [ASee] icon shown as Picture 48.
11. Enter into [ASee] main interface shown as Picture 49.

Mobile Viewer's Access Instruction



Picture 48



Picture 49

1	CHs Select	2	PTZ Direction
3	Zoom+/-	4	Focus+ -
5	Iris +/-		
6	Function buttons from left to right in turn are: Play/Pause, Snapshot, setup, Next CHs Group and help.		

12. Setting Menu



Picture 50

Address: Enter the IP address of the DVR

Port: Enter the Mobile Port No. Of the DVR

Device Name: Enter DVR name (User defined)

User ID: Enter the User's Name

Password: Enter the User's Password

History: Click the [History] button to preview History record

Enter the testing device info..

13. Help Instructions.

14. History Record and auto-record info

Mobile Viewer's Access Instruction

The material in this document is the intellectual property of our department .

No part of this manual may be reproduced, copied, translated, transmitted, or published in any form or by any means without our department prior written permission.

Our products are under continual improvement and we reserve the right to make changes without notice. But no guarantee is given as to the correctness of its contents.

We do not undertake any responsibility for the harms cause by using our product.

The model of the products in the user's manual only for recognition, but these names also perhaps are belong to other company's registered trademark or the copyright.

The product picture may differ from the actual product, only for your reference. The accessories will probably be different according to the different selling areas. For details of accessories, please refer to your local distributor.

Copyright reserved